

STATE OF CONNECTICUT
CONNECTICUT SITING COUNCIL

IN RE:

NEW CINGULAR WIRELESS PCS, LLC (AT&T)
PETITION FOR A DECLARATORY RULING,
PURSUANT TO CONNECTICUT GENERAL
STATUTES §4-176 AND §16-50K, FOR THE
INSTALLATION OF A SMALL CELL WIRELESS
TELECOMMUNICATIONS FACILITY IN THE
PUBLIC RIGHT-OF-WAY NEAR 80 ALLINGS
CROSSING ROAD IN WEST HAVEN,
CONNECTICUT.

PETITION NO. 1511

June 9, 2022

**RESPONSES OF NEW CINGULAR WIRELESS PCS, LLC (AT&T)
TO CONNECTICUT SITING COUNCIL INTERROGATORIES**

- Q1. Provide the estimated cost of the proposed facility.
- A1. *The estimated cost is \$50,000.*
- Q2. Provide the estimated duration of construction.
- A2. *The anticipated duration of construction is approximately 90 days.*
- Q3. Provide the distance and direction to the nearest residential property line and residential structure.
- A3. *The distance to the nearest residential property line and residential structure is approximately 157 feet.*
- Q4. Identify the zoning classification for the project location and surrounding area.
- A4. *The project location is classified in the LM Light Manufacturing zoning district. Surrounding properties are classified in the LM, R2 single family and OS Open Space zoning districts.*
- Q5. Could the construction or operation of the proposed facility impact or interfere with any existing public utilities, overhead or underground, within the project area? If so, identify any measures that would be employed to protect the existing utilities from impact or interference.
- A5. *No, the installation will not impact or interfere with any of the existing public utilities, overhead or underground within the project area. Please note that AT&T's contractors will obtain a Dig Safe number prior to any installation to confirm the location of any underground utilities.*
- Q6. Referencing page 2 of the Petition, which frequency band(s) are associated with the proposed AWS service for this facility?
- A6. *The AWS frequency is 2100 MHz.*

Q7. Would the proposed facility be capable of providing 5G wireless service?

A7. *AT&T delivers two methods of 5G service:*

- *AT&T 5G, using low-band spectrum (700 MHz, 850 MHz, 1900 MHz, 2100 MHz and 2300 MHz).*
- *AT&T 5G+, which is broadband 5G delivered via millimeter wave spectrum (24GHz to 39 GHz).*

The proposed antennas will support 5G in the low-band spectrum. The proposed antennas do not support the millimeter wave spectrum where broadband 5G+ operates.

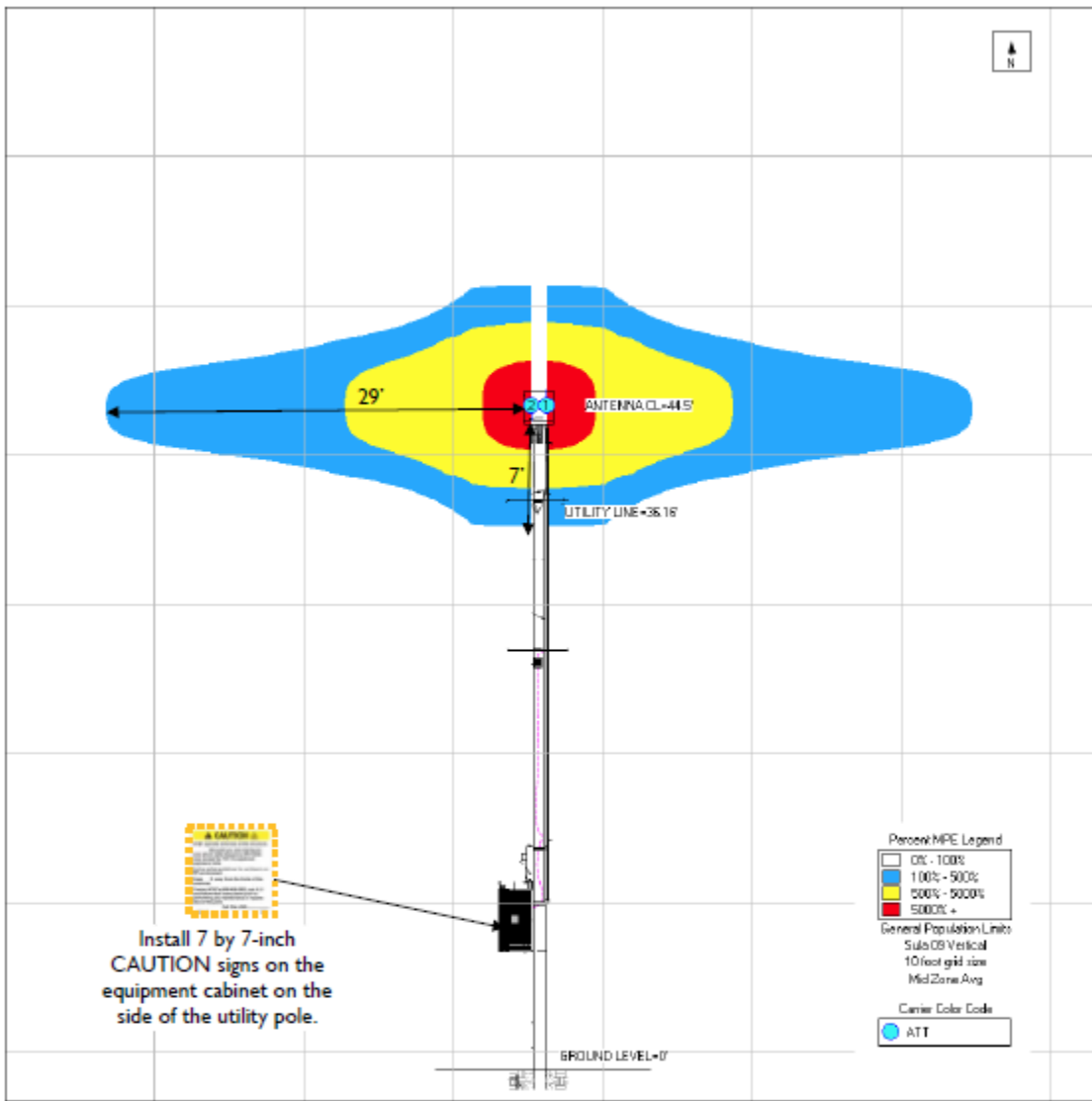
Q8. Please provide the operational frequencies, the number of channels for each operating frequency and effective radiated power (ERP) values for each operating frequency.

A8. *There will be 3 channels and the operational frequencies are 700 PCS and AWS. The combined wattage for antennas will be 1325 watts.*

Q9. Paragraph 6 of Section 3.0 of the Radio Frequency Electromagnetic Energy Compliance Report (EME Report) prepared by EBI Consulting and dated February 1, 2022 states "At the nearest walking/working surfaces to the AT&T antennas on the utility line level, the maximum power density generated by the AT&T antennas is approximately 84.76 percent of the FCC's general public limit (16.95 percent of the FCC's occupational limit)." What is the walking/working surface on the utility line level at this site, and where is it located in relation to the proposed facility?

A9. *Please reference page 12 of the EME Report, which shows a graphic depiction of these areas of exceedance and their dimensions (see example below). The limits are represented in the legend with areas exceeding the general public limit shown in blue and areas exceeding the occupational limit shown in yellow. Red represents areas exceeding 10x the occupational limit. These limits are defined in Section 1 of the EME Report.*

Elevation Simulation

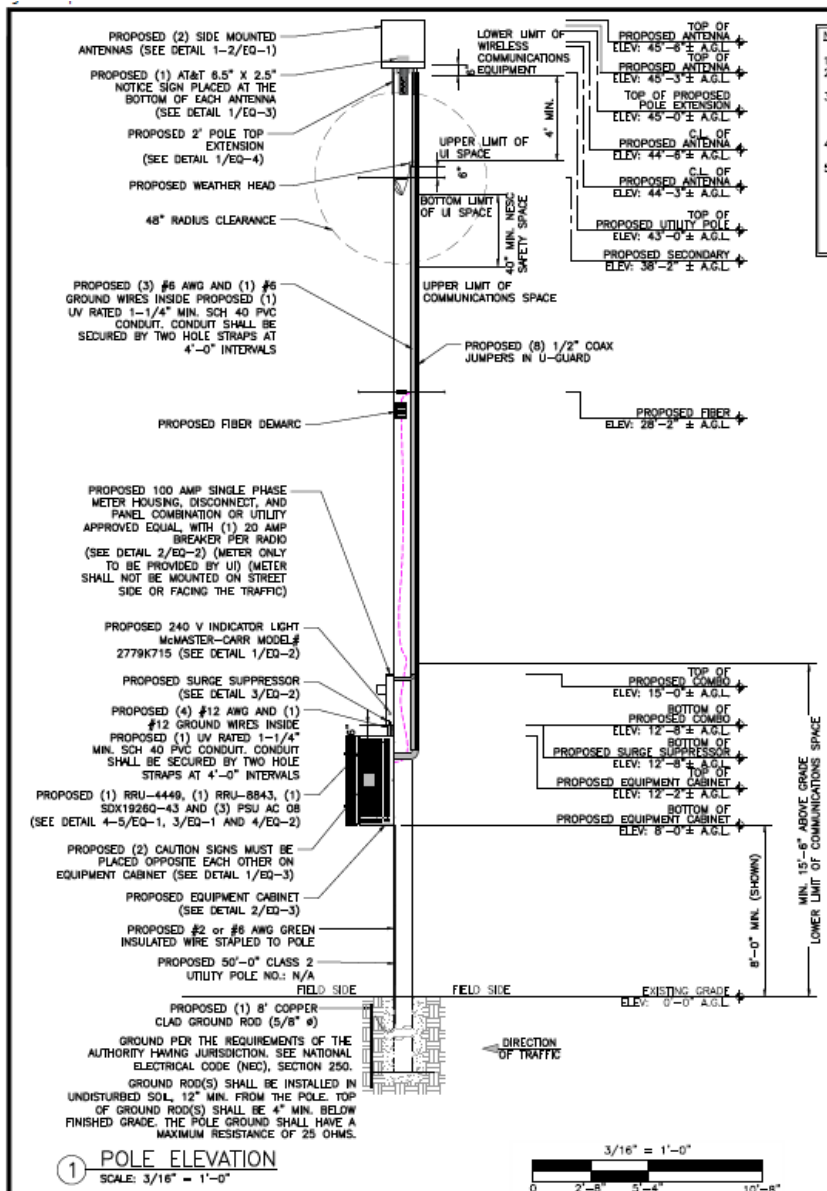


	Existing Sign
	Proposed Sign
	Installed Sign

SIGN IDENTIFICATION LEGEND			
	AT&T NOTICE 2 Sign		AT&T CAUTION 2 - Rooftop Sign
	AT&T WARNING 1B and 2A Signs		AT&T CAUTION 2B - Tower Sign
	AT&T NOTICE Small Cell Signs		AT&T CAUTION 2C - Parapet Sign
	AT&T CAUTION Small Cell Signs		AT&T TRILINGUAL NOTICE Sign

Q10. Please provide a site drawing showing the source for power and/or fiber (path of connection indicating distance/direction) and whether the connection is overhead or underground.

A10. The site plans provided show that the power and fiber are coming from overhead (please see excerpt from the drawings below). The pole that will be utilized for power will likely be the pole directly across the street.



Q11. What is the distance and direction of the nearest wetland area to the proposed facility?

A11. *The nearest wetland to the proposed facility is located approximately 309 feet or .6 mile to the east.*

Q12. Would the proposed facility be located within a 100-year or 500-year flood zone?

A12. *No.*

Q13. Is the proposed facility located within a Natural Diversity Database buffer area?

A13. *No.*

CERTIFICATE OF SERVICE

I hereby certify that on this day, one original and fifteen (15) hard copies of the foregoing was sent via overnight mail to the Connecticut Siting Council with an electronic copy sent on June 9, 2022 in accordance with the Connecticut Siting Council directives.

June 9, 2022



Lucia Chiochio, Esq.
Cuddy & Feder LLP
445 Hamilton Ave, 14th Floor
White Plains, NY 10601
(914)-761-1300
Attorneys for the Applicant

cc: AT&T
Nexius
Daniel Patrick, Esq., Cuddy & Feder LLP