

**Exhibit L**

Visibility Documentation



**EXISTING**

**AERIAL PHOTOGRAPH  
SOURCE: PICTOMETRY 2020**

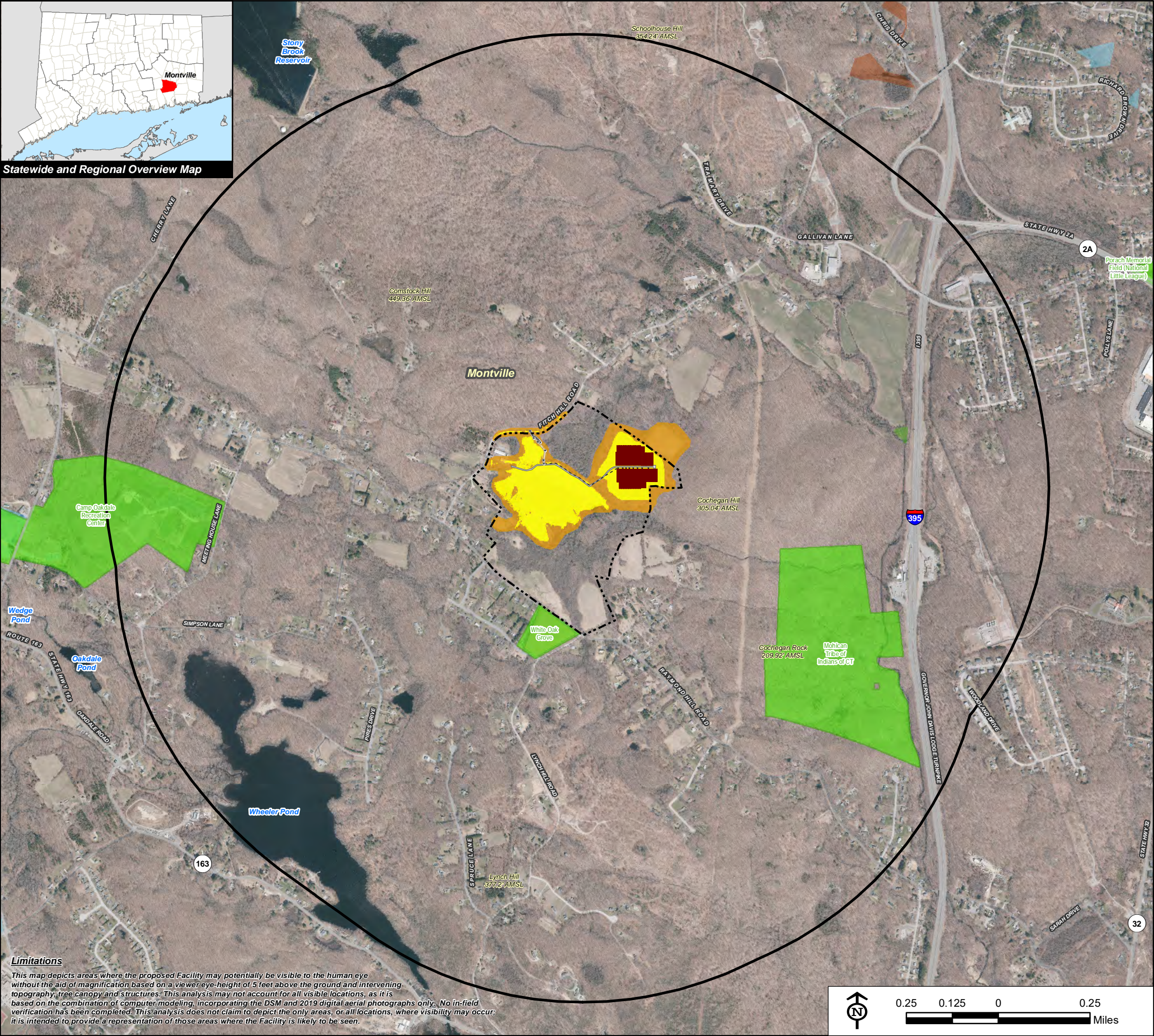




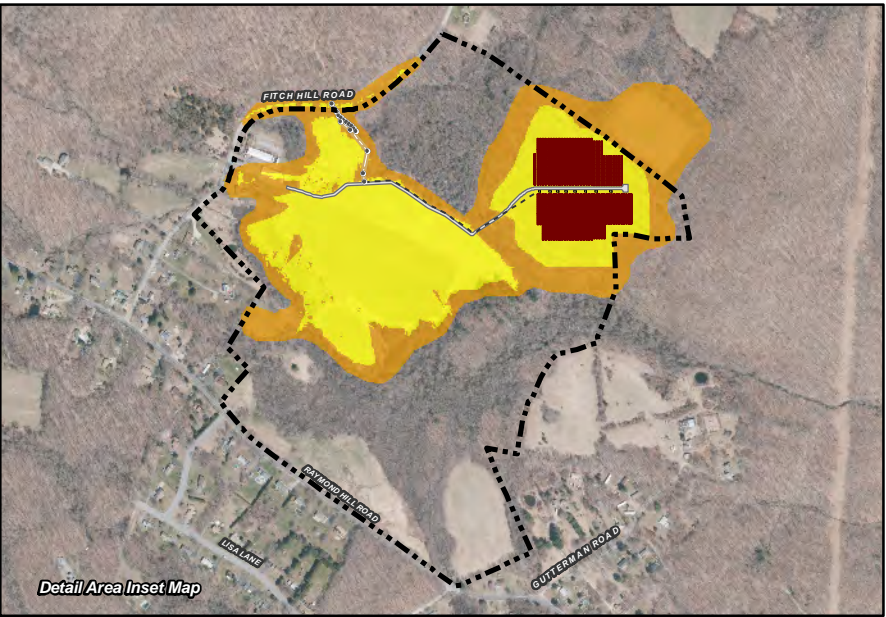
**PROPOSED**

**AERIAL PHOTOGRAPH  
SOURCE: PICTOMETRY 2020**





Statewide and Regional Overview Map



Detail Area Inset Map

## Viewshed Analysis Map

Proposed N Silver Brook Solar Facility  
486 Fitch Hill Road  
Uncasville, CT 06382

Proposed solar modules to be mounted on approximate 10' AGL support structures.  
Proposed interconnect utility poles to be approximately 40' AGL.  
Forest canopy height and topographic contours are derived from LiDAR data.  
Study area encompasses a 1-mile radius and includes 3,320 acres.  
Information provided on this map has not been field verified.  
Base Map Source: 2019 Aerial Photograph (CTECO)  
Map Date: January 2022

### Legend

Site	Trail
Interconnection Utility Pole	Scenic Highway
Interconnection Path (Underground)	DEEP Boat Launches
Interconnection Path (OVH)	Municipal and Private Open Space Property
Solar Modules	State Forest/Park
Concrete Pad	<b>Protected Open Space Property</b>
Gravel Access Road	Federal
Study Area (1-Mile Radius)	Land Trust
Predicted Year-Round Visibility (41 Acres)	Municipal
Areas of Potential Seasonal Visibility (31 Acres)	Private
Municipal Boundary	State

### Data Sources:

#### Physical Geography / Background Data

A digital surface model (DSM) was created from the State of Connecticut 2016 LiDAR LAS data points. The first return LiDAR LAS values, associated with the highest feature in the landscape (such as a treetop or top of building), were used to capture the natural and built features on the Earth's surface beyond the approximate limits of clearing associated with the proposed solar facility. The "bare-earth" return values were utilized to reflect proposed conditions where vegetative clearing associated with the proposed solar facility would occur.

Municipal Open Space, State Recreation Areas, Trails, County Recreation Areas, and Town Boundary data obtained from CT DEEP. Scenic Roads: CTDOT State Scenic Highways (2015); Municipal Scenic Roads (compiled by APT)

#### Dedicated Open Space & Recreation Areas

Connecticut Department of Energy and Environmental Protection (DEEP): DEEP Property (May 2007; Federal Open Space (1997); Municipal and Private Open Space (1997); DEEP Boat Launches (1994)

Connecticut Forest & Parks Association, Connecticut Walk Books East & West

#### Other

CTDOT Scenic Strips (based on Department of Transportation data)

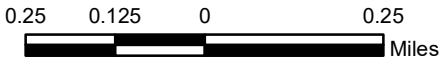
#### Notes

**\*\*Not all the sources listed above appear on the Viewshed Maps. Only those features within the scale of the graphic are shown.**

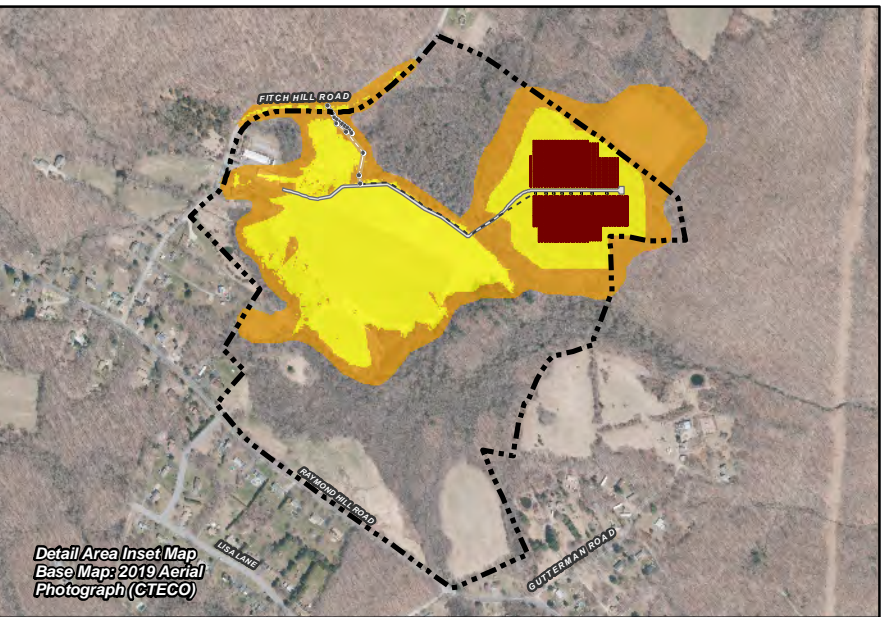
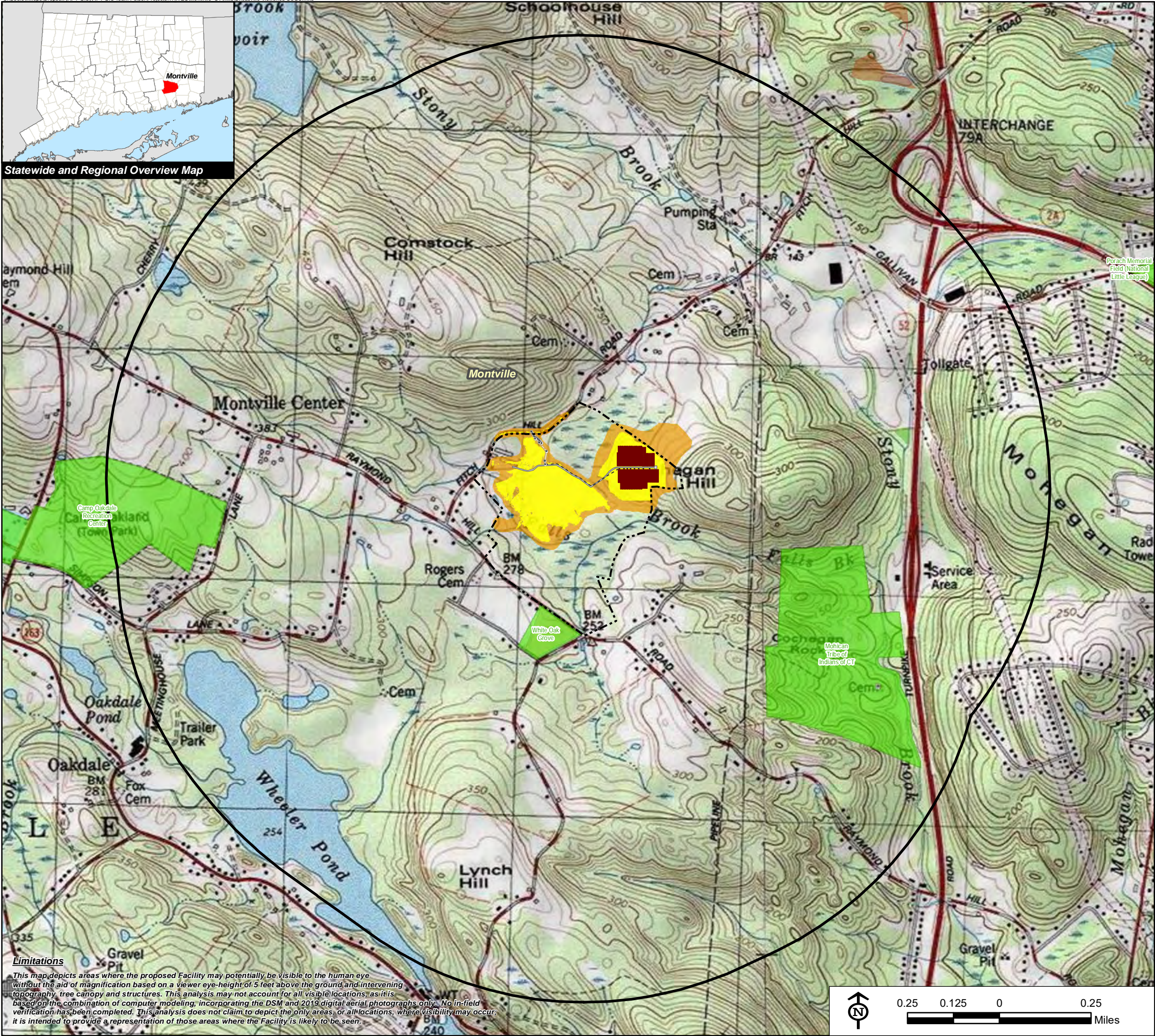


### Limitations

This map depicts areas where the proposed Facility may potentially be visible to the human eye without the aid of magnification based on a viewer eye-height of 5 feet above the ground and intervening topography, tree canopy and structures. This analysis may not account for all visible locations, as it is based on the combination of computer modeling, incorporating the DSM and 2019 digital aerial photographs only. No in-field verification has been completed. This analysis does not claim to depict the only areas, or all locations, where visibility may occur; it is intended to provide a representation of those areas where the Facility is likely to be seen.







## Viewshed Analysis Map

Proposed N Silver Brook Solar Facility  
486 Fitch Hill Road  
Uncasville, CT 06382

Proposed solar modules to be mounted on approximate 10' AGL support structures.  
Proposed interconnect utility poles to be approximately 40' AGL.  
Forest canopy height and topographic contours are derived from LiDAR data.  
Study area encompasses a 1-mile radius and includes 3,320 acres.  
Information provided on this map has not been field verified.  
Base Map Source: Montville, CT (1983) and Uncasville, CT (1984)  
Map Date: January 2022