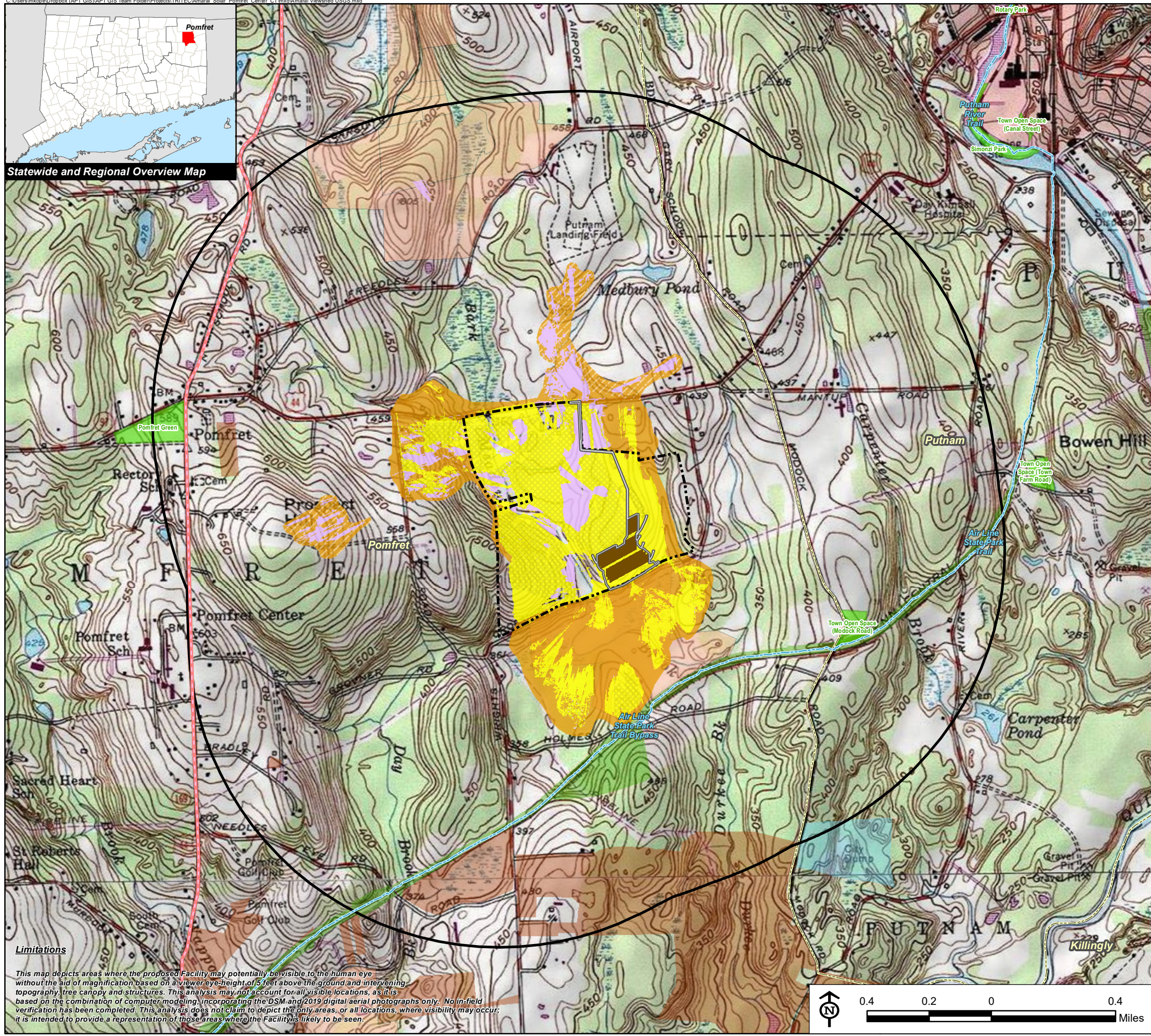


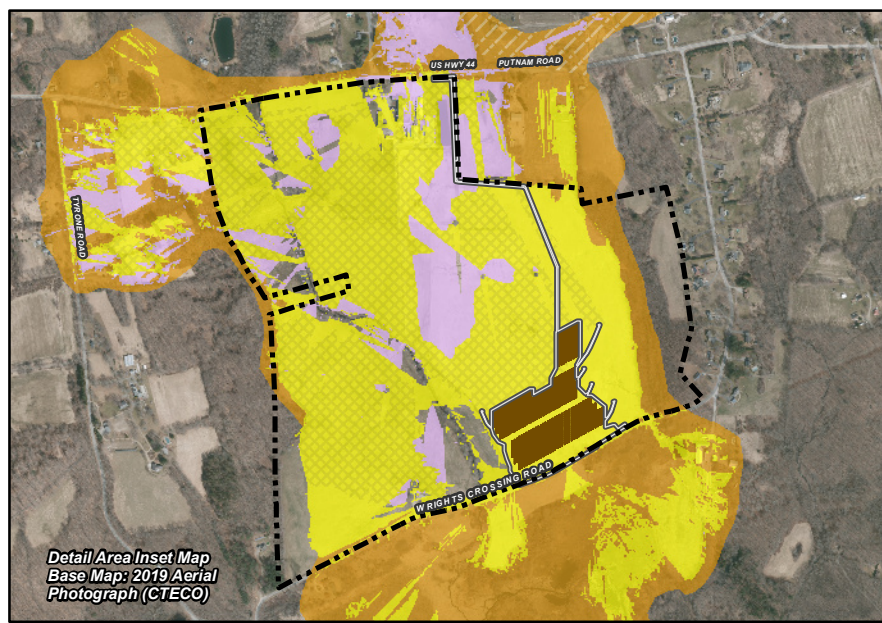
Exhibit O

Viewshed Maps and Photo-Simulations



Statewide and Regional Overview Map

Limitations
 This map depicts areas where the proposed Facility may potentially be visible to the human eye without the aid of magnification based on a viewer eye-height of 5 feet above the ground and intervening topography, tree canopy and structures. This analysis may not account for all visible locations, as it is based on the combination of computer modeling, incorporating the DSM and 2019 digital aerial photographs only. No in-field verification has been completed. This analysis does not claim to depict the only areas, or all locations, where visibility may occur; it is intended to provide a representation of those areas where the Facility is likely to be seen.



Detail Area Inset Map
 Base Map: 2019 Aerial Photograph (CTECO)

Viewshed Analysis Map

Proposed Amaral Solar Facility
 254 Putnam Road
 Pomfret Center, Connecticut

Proposed solar modules to be mounted on approximate 10' AGL support structures. Proposed interconnect utility poles to be approximately 40' AGL. Forest canopy height and topographic contours are derived from LiDAR data. Study area encompasses a 1-mile radius and includes 3,820 acres. Information provided on this map has not been field verified. Base Map Source: USGS 7.5 Minute Topographic Quadrangle Maps, Danielson, CT (1970) and Putnam, CT (1970) Map Date: July 2021

Legend

- Site
- Limit of Disturbance
- Solar Modules
- Study Area (1-Mile Radius)
- Municipal Boundary
- Trail
- Scenic Highway
- DEEP Boat Launches
- Municipal and Private Open Space Property
- State Forest/Park
- Predicted Year-Round Visibility (281 Acres Total)**
Proposed Modules and Utility Poles (118 Acres)
- Proposed Modules Only (106 Acres)
- Proposed Utility Poles Only (57 Acres)
- Areas of Potential Seasonal Visibility (195 Acres Total)**
Proposed Modules and Utility Poles (155 Acres)
- Proposed Utility Poles Only (40 Acres)
- Protected Open Space Property**
Federal
- Land Trust
- Municipal
- Private
- State

Data Sources:

Physical Geography / Background Data
 A digital surface model (DSM) was created from the State of Connecticut 2016 LiDAR LAS data points. The first return LiDAR LAS values, associated with the highest feature in the landscape (such as a treetop or top of building), were used to capture the natural and built features on the Earth's surface beyond the approximate limits of clearing associated with the proposed solar facility. The "bare-earth" return values were utilized to reflect proposed conditions where vegetative clearing associated with the proposed solar facility would occur.

Municipal Open Space, State Recreation Areas, Trails, County Recreation Areas, and Town Boundary data obtained from CT DEEP. Scenic Roads: CTDOT State Scenic Highways (2015); Municipal Scenic Roads (compiled by APT)

Dedicated Open Space & Recreation Areas
 Connecticut Department of Energy and Environmental Protection (DEEP): DEEP Property (May 2007; Federal Open Space (1997); Municipal and Private Open Space (1997); DEEP Boat Launches (1994)
 Connecticut Forest & Parks Association, Connecticut Walk Books East & West

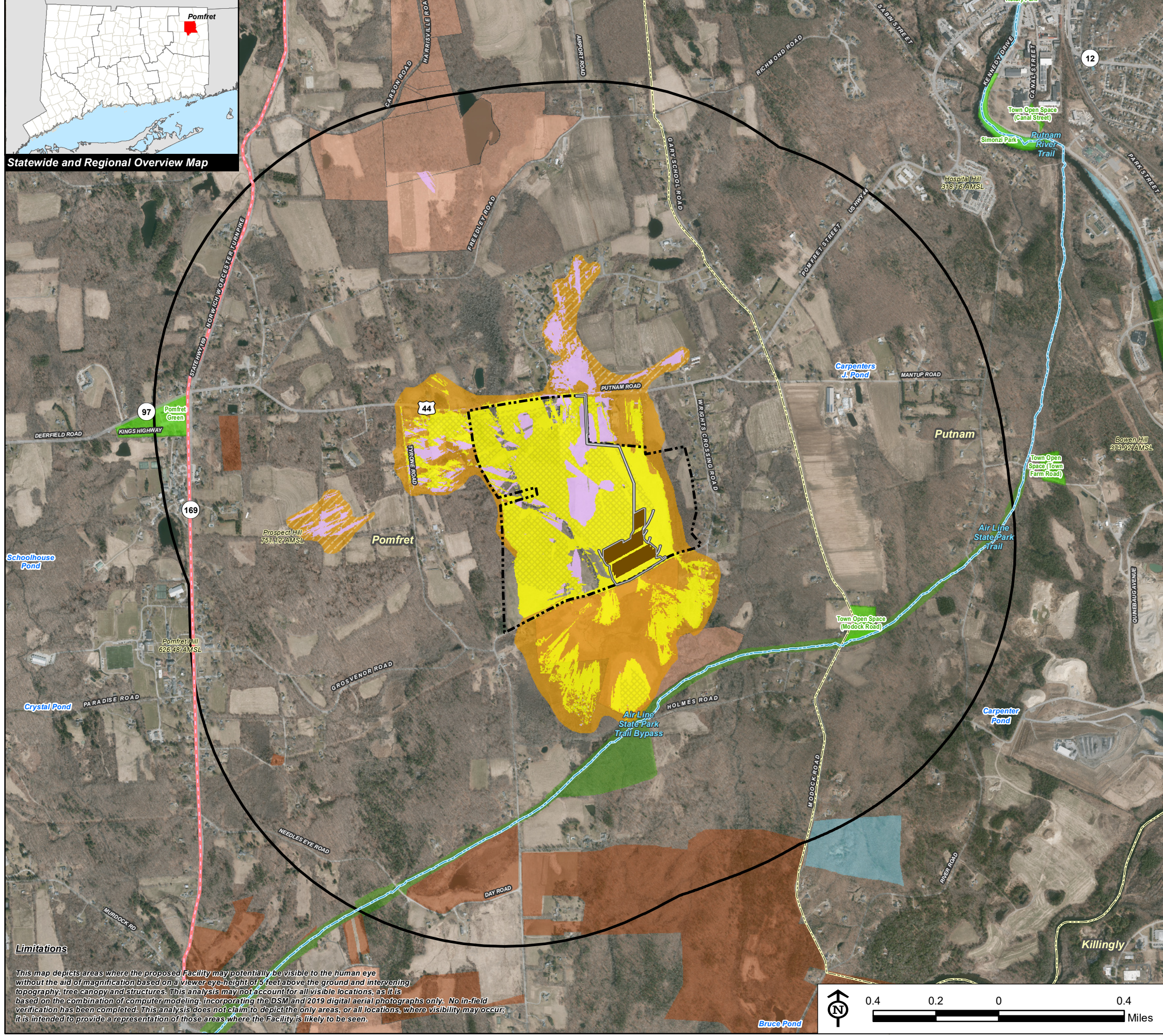
Other

CTDOT Scenic Strips (based on Department of Transportation data)

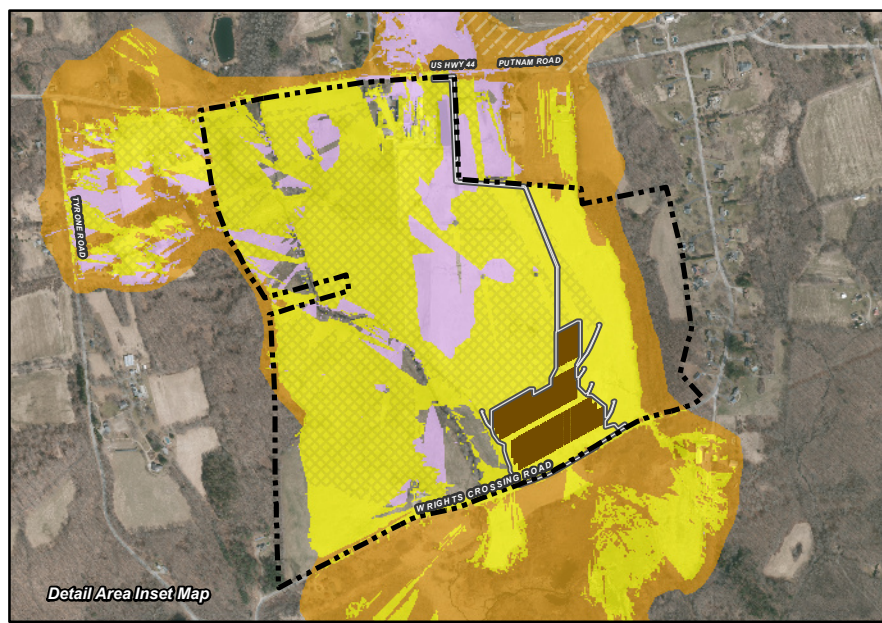
Notes

**Not all the sources listed above appear on the Viewshed Maps. Only those features within the scale of the graphic are shown.





Statewide and Regional Overview Map



Detail Area Inset Map

Viewshed Analysis Map

Proposed Amaral Solar Facility
254 Putnam Road
Pomfret Center, Connecticut

Proposed solar modules to be mounted on approximate 10' AGL support structures. Proposed interconnect utility poles to be approximately 40' AGL. Forest canopy height and topographic contours are derived from LiDAR data. Study area encompasses a 1-mile radius and includes 3,820 acres. Information provided on this map has not been field verified. Base Map Source: 2019 Aerial Photograph (CTECO) Map Date: July 2021

Legend

- Site
- Limit of Disturbance
- Solar Modules
- Study Area (1-Mile Radius)
- Municipal Boundary
- Trail
- Scenic Highway
- DEEP Boat Launches
- Municipal and Private Open Space Property
- State Forest/Park
- Predicted Year-Round Visibility (281 Acres Total)**
 - Proposed Modules and Utility Poles (118 Acres)
 - Proposed Modules Only (106 Acres)
 - Proposed Utility Poles Only (57 Acres)
- Areas of Potential Seasonal Visibility (195 Acres Total)**
 - Proposed Modules and Utility Poles (155 Acres)
 - Proposed Utility Poles Only (40 Acres)
- Protected Open Space Property**
 - Federal
 - Land Trust
 - Municipal
 - Private
 - State

Data Sources:

Physical Geography / Background Data
A digital surface model (DSM) was created from the State of Connecticut 2016 LiDAR LAS data points. The first return LiDAR LAS values, associated with the highest feature in the landscape (such as a treetop or top of building), were used to capture the natural and built features on the Earth's surface beyond the approximate limits of clearing associated with the proposed solar facility. The "bare-earth" return values were utilized to reflect proposed conditions where vegetative clearing associated with the proposed solar facility would occur.

Municipal Open Space, State Recreation Areas, Trails, County Recreation Areas, and Town Boundary data obtained from CT DEEP. Scenic Roads: CTDOT State Scenic Highways (2015); Municipal Scenic Roads (compiled by APT)

Dedicated Open Space & Recreation Areas
Connecticut Department of Energy and Environmental Protection (DEEP): DEEP Property (May 2007); Federal Open Space (1997); Municipal and Private Open Space (1997); DEEP Boat Launches (1994)
Connecticut Forest & Parks Association, Connecticut Walk Books East & West

Other

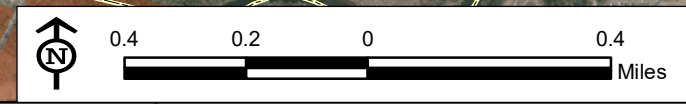
CTDOT Scenic Strips (based on Department of Transportation data)

Notes

**Not all the sources listed above appear on the Viewshed Maps. Only those features within the scale of the graphic are shown.

Limitations

This map depicts areas where the proposed Facility may potentially be visible to the human eye without the aid of magnification based on a viewer eye-height of 5 feet above the ground and intervening topography, tree canopy and structures. This analysis may not account for all visible locations, as it is based on the combination of computer modeling, incorporating the DSM and 2019 digital aerial photographs only. No in-field verification has been completed. This analysis does not claim to depict the only areas, or all locations, where visibility may occur; it is intended to provide a representation of those areas where the Facility is likely to be seen.





PHOTOGRAPHED ON: 7/28/2021

EXISTING

PHOTO

1

LOCATION

WRIGHTS CROSSING ROAD AT WYNDHAM LAND TRUST

ORIENTATION

NORTHEAST



PROPOSED

PHOTO

1

LOCATION

WRIGHTS CROSSING ROAD AT WYNDHAM LAND TRUST

ORIENTATION

NORTHEAST



PHOTOGRAPHED ON: 7/28/2021

EXISTING

PHOTO

2

LOCATION

WRIGHTS CROSSING ROAD

ORIENTATION

WEST



PROPOSED

PHOTO

2

LOCATION

WRIGHTS CROSSING ROAD

ORIENTATION

WEST



PHOTOGRAPHED ON: 7/28/2011

EXISTING

PHOTO

3

LOCATION

PUTNAM ROAD

ORIENTATION

SOUTHEAST



TRITEC



PROPOSED

PHOTO

3

LOCATION
PUTNAM ROAD

ORIENTATION
SOUTHEAST