

What Powers You

March 11th, 2022

Melanie Bachman, Esq.
Executive Director
Connecticut Siting Council
10 Franklin Square
New Britain, CT 06051

PETITION NO. 1485 - Bloom Energy Corporation petition for a declaratory ruling, pursuant to Connecticut General Statutes §4-176 and §16-50k, for the proposed construction, maintenance and operation of a customer-side 2-megawatt fuel cell facility and associated equipment to be located at Stamford Hospital, 1 Hospital Plaza, Stamford, Connecticut.

Dear Ms. Bachman:

Please see the attached responses to the interrogatories provided to Bloom Energy on March 2nd, 2022.

Respectfully,



Kristen Grillo
Senior Permitting Specialist | East Coast Field Office
Customer Installations Group | North America
(917) 803-4511
Kristen.Grillo@bloomenergy.com



Bloom Energy Corporation
4353 North First Street, San Jose, CA 95134
408 543 1500
www.bloomenergy.com

**Petition No. 1485
Bloom Energy Corporation
Stamford Hospital
1 Hospital Plaza
Stamford, Connecticut
Interrogatories**

1. What is the estimated cost of the proposed project?

Response: The estimated cost of the project is \$1,579,265.00

2. Referring to section IV, p. 10 of the Petition, has the City and/or abutters provided comments to Bloom since the Petition filing? If yes, summarize the comments.

Response: No comments have been provided by the City and/or the abutters notified.

3. Provide site plan details of the removable bollards referenced in page 1 of Exhibit 9. What other security measures are proposed for the facility (e.g. fencing, locks)?

Response: Please see Attachment 1 for the site plan details of the removable bollards.

Regarding other security measures that Bloom proposes to protect the facility, the fuel cells are tamper-proof; the internal components of the system cannot be accessed without a unique key that is needed in order to open the servers, preventing anyone that is non-essential personnel from accessing them.

4. Referring to Petition Exhibit 4, identify the location of the fuel cell facility on the photos.

Response: Please see Attachment 2 for photo markups that identify the location of the fuel cell facility, as requested.

5. Referring to Petition Exhibit 7 on p. 12, will Bloom provide a copy of the Fuel Cell Emergency Response Plan and conduct fuel cell operation/emergency training with City of Stamford emergency responders prior to the commencement of facility operation?

Response: Yes, Bloom will be in contact with the Stamford Fire Marshal prior to commissioning of the facility to coordinate training and presentation of the fuel cell facility as desired by City representatives.

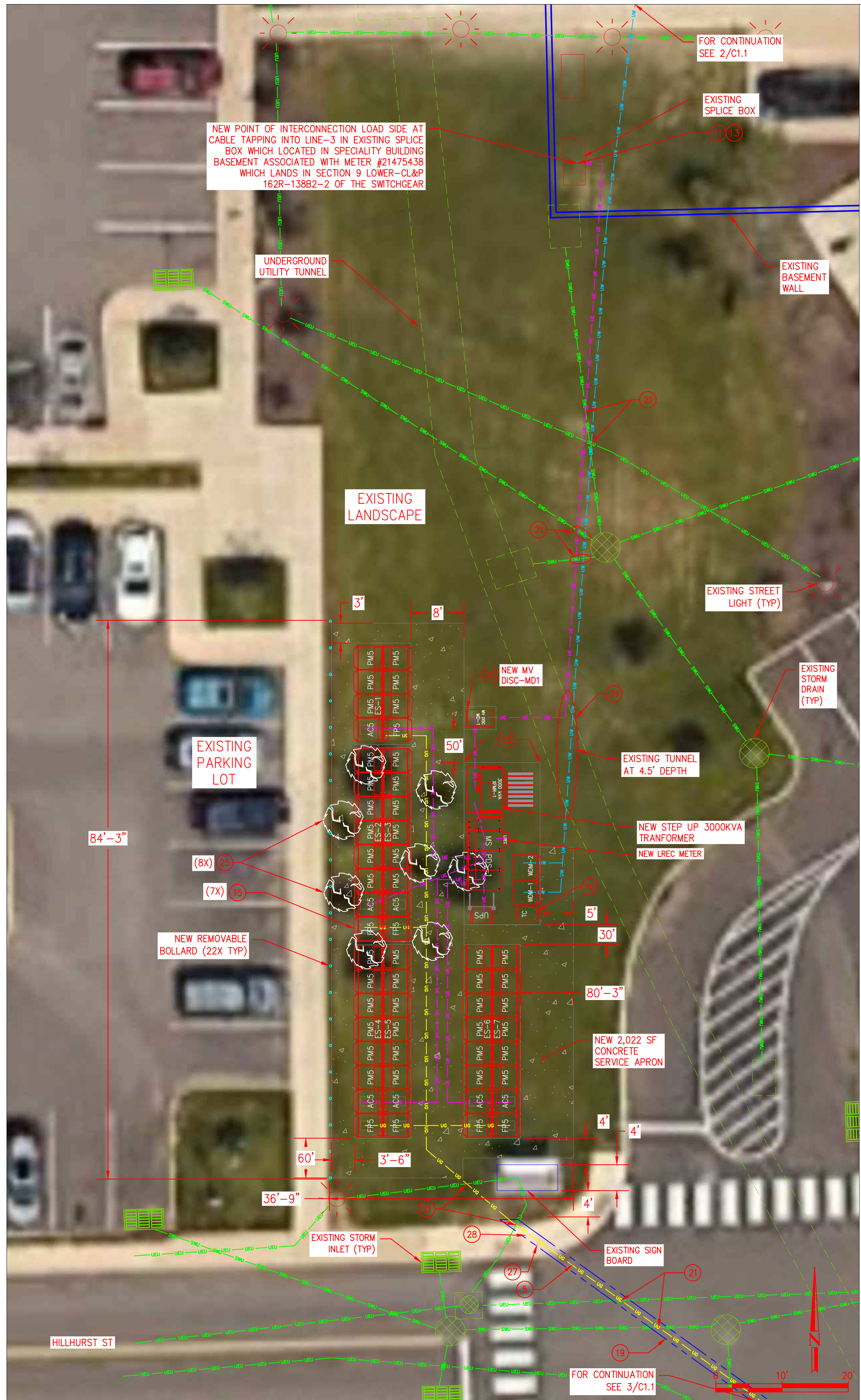
6. Provide typical construction workdays and hours.

Response: Monday through Friday, 7am-5pm

7. Referring to Petition p. 4 paragraph 2, identify the media to be used for pipe cleaning procedures at the proposed facility in accordance with Public Act 11-101, An Act Adopting Certain Safety Recommendations of the Thomas Commission and Connecticut General Statutes § 16-50ii.

Response: The media to be used for the pipe cleaning procedures at the proposed facility would be compressed air.

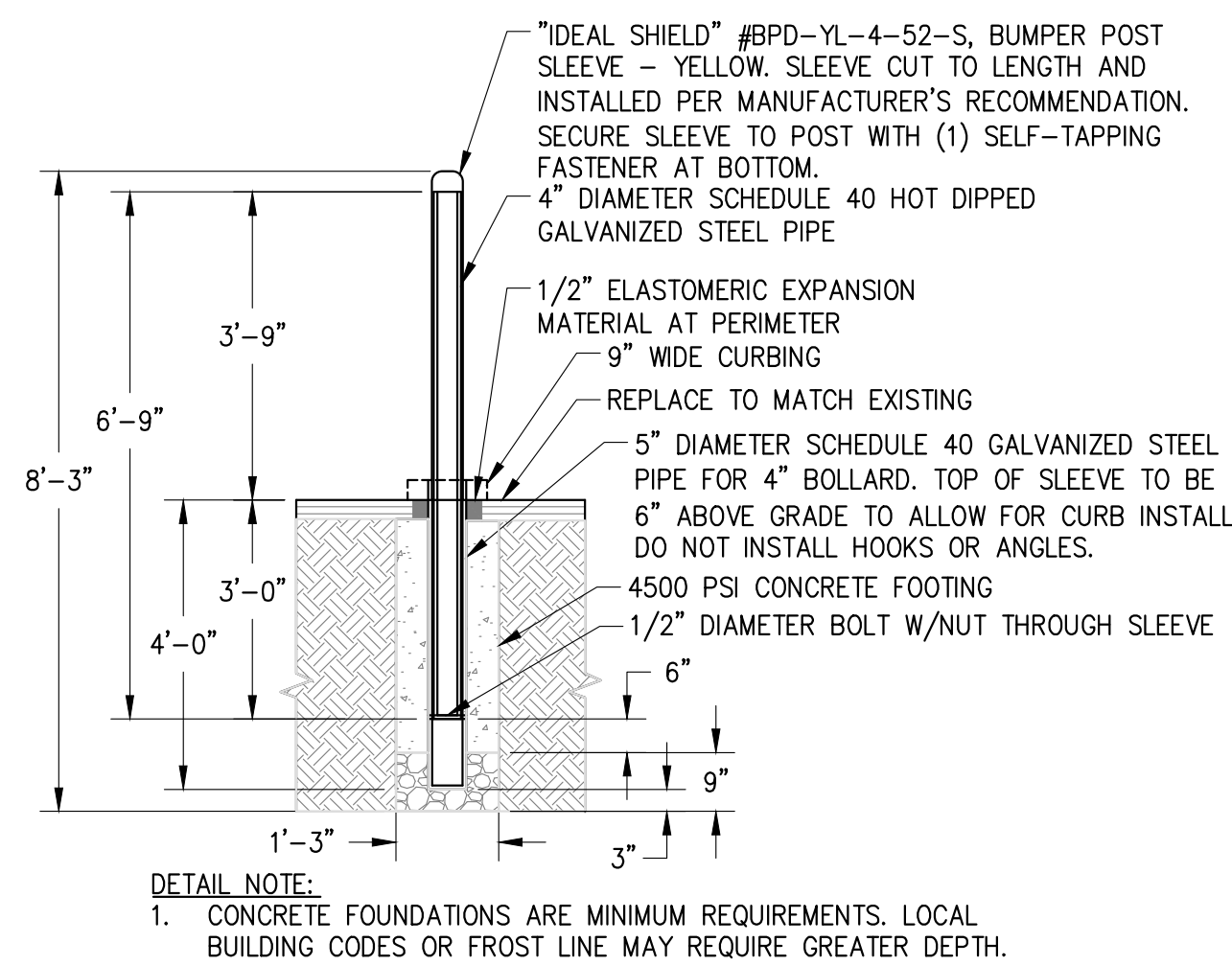
Attachment 1: Site Plan Detail for Removable Bollards



DETAILED SITE PLAN

SCALE: 1" = 10'

1
C1.1



BOLLARD - REMOVABLE

SCALE:

2
C2.1

DETAIL NOTE:
1. CONCRETE FOUNDATIONS ARE MINIMUM REQUIREMENTS. LOCAL BUILDING CODES OR FROST LINE MAY REQUIRE GREATER DEPTH.

GENERAL NOTES

- CLEAN AND PRIME ALL NEW WALL MOUNTED PIPING AND CONDUIT. PIPING AND CONDUIT SHALL BE PAINTED WITH EXTERIOR GRADE PAINT TO MATCH EXISTING.
- CONDUITS AND PIPES MOUNTED TO BUILDING WALL SHALL BE SUPPORTED AS PER LOCAL CODE, RUN AT HEIGHT ABOVE DOORWAYS, AND STAND OFF WALL TO AVOID EXISTING CONDUITS AND PIPES.
- SLOPE LINES SHOWN ARE APPROXIMATE AND INTENDED TO SHOW THE GENERAL DIRECTION OF WATER RUN OFF; SLOPE LINES ARE DRAWN PER VISUAL SURVEY OF SURROUNDING AREA.
- SEE BLOOM ENERGY PRODUCT INSTALLATION DRAWINGS FOR UTILITY CONNECTIONS TO ANCILLARY EQUIPMENT AND ENERGY SERVER.

REFERENCE SHEET NOTES

- NEW UTILITY PROVIDED AND INSTALLED GAS METER & REGULATOR ASSEMBLY WITH SHUT-OFF VALVE. CONTRACTOR SHALL PROVIDE PAD PER DETAILS IF REQUIRED BY UTILITY COMPANY. COORDINATE ALL CONNECTIONS WITH GAS UTILITY.
- NEW UNDERGROUND GAS SERVICE TAP BY UTILITY COMPANY. COORDINATE WITH GAS UTILITY. CONTRACTOR SHALL PERFORM COMPACTION AND MATCH EXISTING SURFACE AND GRADE. CONTRACTOR SHALL COORDINATE GAS PIPE SIZING AND INSTALLATION REQUIREMENTS WITH UTILITY.
- NEW PRIVATE GAS REGULATOR SET ASSEMBLY FOR BLOOM ENERGY SERVER WITH SHUT-OFF VALVE. REFER TO GAS RISER DETAIL FOR ADDITIONAL REQUIREMENTS.
- NEW GAS PIPE SHALL BE FURNISHED AND INSTALLED BY THE CONTRACTOR. REFER TO GAS RISER DETAIL FOR ADDITIONAL REQUIREMENTS.
- TAP EXISTING WATER LINE AT NEAREST ACCESSIBLE LOCATION IN BUILDING AS SHOWN WITH A LOCAL SHUT-OFF VALVE. REFER TO DOMESTIC WATER CONNECTION DETAIL FOR ADDITIONAL REQUIREMENTS.
- NEW WATER PIPE SHALL BE FURNISHED AND INSTALLED BY THE CONTRACTOR. REFER TO WATER RISER DETAIL FOR ADDITIONAL REQUIREMENTS.
- NEW BLOOM ENERGY FURNISHED, CONTRACTOR INSTALLED, DISCONNECT SWITCH. MOUNT TO WALL PER MANUFACTURER AND UTILITY SPECIFICATIONS.
- CONTRACTOR SHALL TERMINATE ELECTRIC FEEDER AS SHOWN. REFER TO ELECTRICAL SINGLE LINE DIAGRAM FOR ADDITIONAL REQUIREMENTS.
- CONTRACTOR SHALL PROVIDE TWO GROUNDING RODS TO BE PLACED 6' APART MINIMUM. REFER TO ELECTRICAL SINGLE LINE DIAGRAM FOR ADDITIONAL REQUIREMENTS.
- NEW ELECTRICAL FEEDER SHALL BE FURNISHED AND INSTALLED BY THE CONTRACTOR. REFER TO ELECTRICAL SINGLE LINE DIAGRAM FOR ADDITIONAL REQUIREMENTS.
- MOUNT NEW CONDUIT/PIPE TO EXTERIOR WALL. COORDINATE EXACT ROUTING WITH CUSTOMER REPRESENTATIVE IN THE FIELD. REFER TO WALL MOUNTING DETAIL FOR ADDITIONAL REQUIREMENTS.
- NEW BLOOM ENERGY SERVER. REFER TO BLOOM ENERGY STANDARD INSTALLATION DRAWING SET FOR ADDITIONAL BLOOM ENERGY SERVER DETAILS.
- FACTORY WIRE BLOOM ENERGY SERVER EMERGENCY POWER-OFF SWITCH (EPO).
- CONTRACTOR SHALL CORE CONDUIT AND/OR PIPE THROUGH WALL. SCAN WALL PRIOR TO CORING TO AVOID COLLATERAL DAMAGE TO EXISTING PLUMBING AND WIRING. REFER TO WALL PENETRATION DETAIL FOR ADDITIONAL REQUIREMENTS.
- CONTRACTOR SHALL PROVIDE SAWCUT TRENCH FOR UNDERGROUND UTILITIES IN THIS LOCATION AND HAND DIG TRENCHES WHERE THEY CROSS EXISTING UTILITIES. REFER TO UNDERGROUND/TRENCH CONDUIT AND PIPING DETAIL FOR ADDITIONAL REQUIREMENTS.
- PROTECT EXISTING UNDERGROUND UTILITY LINES FROM DAMAGE WHEN CROSSING WITH NEW UNDERGROUND UTILITIES. CONTRACTOR SHALL BE RESPONSIBLE FOR REPAIR OR REPLACEMENT OF ANY DAMAGED LINES.
- CONTRACTOR SHALL TRANSITION ALL ABOVEGROUND NEW LINES TO UNDERGROUND TOWARD ANCILLARY EQUIPMENT. ABOVE GROUND UTILITIES SHALL BE PROTECTED AS NECESSARY, THEN ROUTED UNDERGROUND TO EQUIPMENT STUB-UP LOCATIONS PER MECHANICAL DETAIL.
- CONTRACTOR SHALL REMOVE EXISTING TREE.
- CONTRACTOR SHALL UNDER-CUT EXISTING CURB FOR TRENCHING UTILITY LINES AND BACKFILL WITH CONCRETE SLURRY. IF CURB IS DAMAGED, REPAIR TO MATCH EXISTING.
- CONTRACTOR SHALL REMOVE AND REPLACE CONCRETE SIDEWALK TO THE NEAREST JOINT AS REQUIRED TO COMPLETE THE WORK. REFER TO CONCRETE SIDEWALK DETAIL FOR ADDITIONAL REQUIREMENTS.

EXISTING UTILITY NOTE:

THE LOCATION OF EXISTING UTILITIES IS SHOWN FOR THE CONTRACTOR'S REFERENCE. EXACT LOCATION, DEPTH AND SIZE OF ALL EXISTING UTILITIES IS NOT KNOWN. CONTRACTOR SHALL ASSUME RESPONSIBILITY FOR ALL EXISTING UTILITIES NOT SHOWN ON THESE DRAWINGS. CONTRACTOR TO FIELD VERIFY LOCATION OF EXISTING UNDERGROUND UTILITIES AND PROTECT THE EXISTING UNDERGROUND UTILITIES FROM DAMAGE WHEN CROSSING WITH NEW UNDERGROUND UTILITIES. CONTRACTOR SHALL BE RESPONSIBLE FOR REPAIR OR REPLACEMENT OF ANY DAMAGED LINES. THE CONTRACTOR SHALL NOTIFY THE ENGINEER IMMEDIATELY IF ANY FIELD CONDITIONS ENCOUNTERED DIFFER FROM THOSE REPRESENTED HEREON. SUCH CONDITIONS COULD RENDER THE DESIGN HEREON INAPPROPRIATE AND MAY REQUIRE ADJUSTMENTS TO AVOID CONFLICTS.

4353 N. FIRST STREET
SAN JOSE, CA 95134

PROPRIETARY AND CONFIDENTIAL

BLOOM ENERGY CORPORATION ALL RIGHTS RESERVED. THIS DOCUMENT IS FOR REFERENCE ONLY AND MAY NOT BE USED WITHOUT THE WRITTEN PERMISSION OF BLOOM ENERGY. ANY REPRODUCTION IN PART OR AS A WHOLE WITHOUT PERMISSION OF BLOOM ENERGY IS PROHIBITED.

CUSTOMER SITE

STAMFORD HEALTH
1 HOSPITAL PLAZA,
STAMFORD, CT 06902



REVISION HISTORY

REV	REVISION ISSUE	DATE

DESIGNED BY SHUSHMA SEETHARAMAIAH	REVIEWED BY
DRAWN BY	APPROVED BY

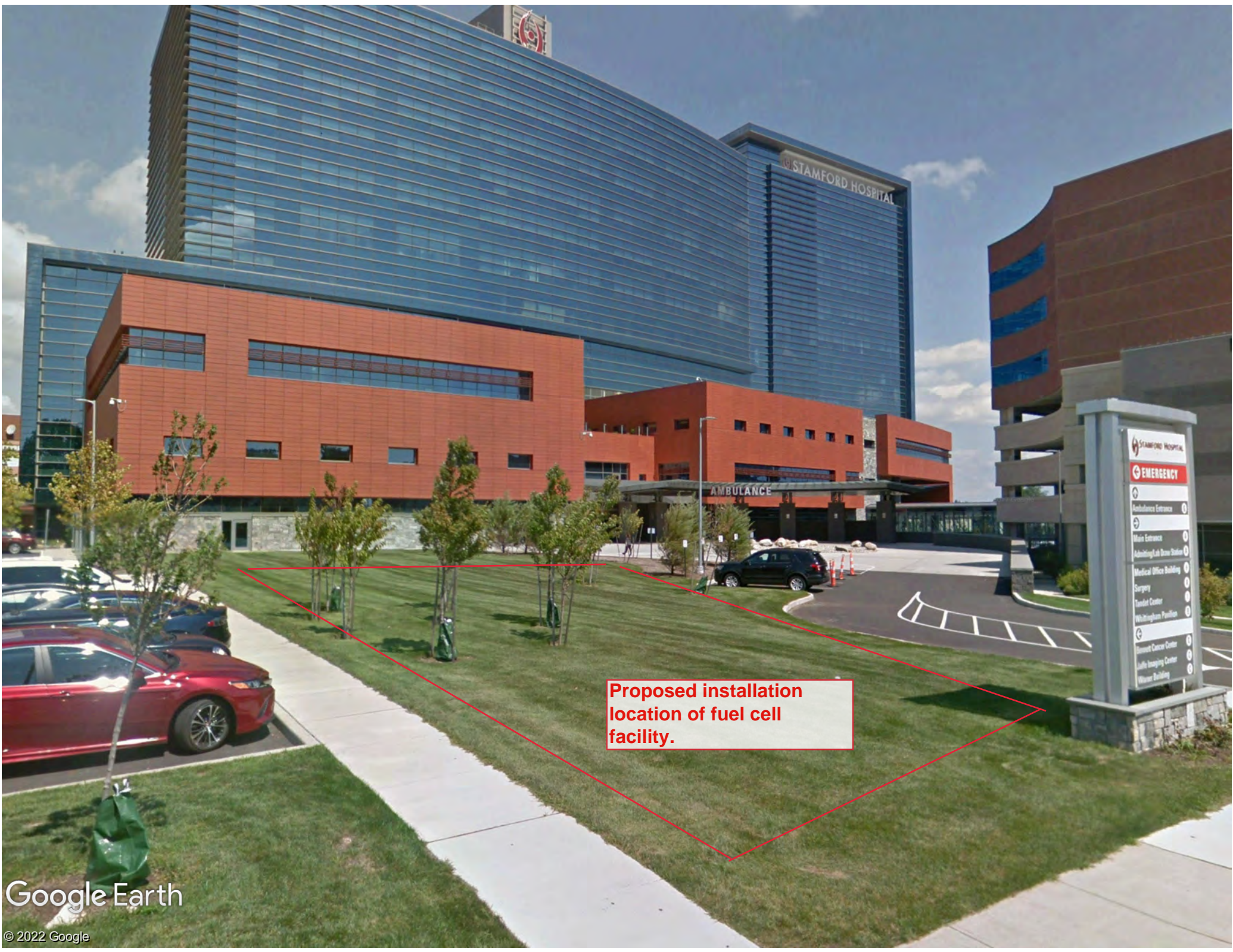
SHEET TITLE
DETAILED SITE PLAN

DRAWING NUMBER
C1.1

BLOOM DOCUMENT
DOC-1014044

THIS DRAWING IS 24" X 36" AT FULL SIZE
SITE ID: SMH000.0 SHEET 04 OF 07

Attachment 2: Fuel Cell Facility Location Photos



STAMFORD HOSPITAL


AMBULANCE

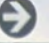
Proposed installation location of fuel cell facility.

- STAMFORD HOSPITAL
- EMERGENCY**
- Residence Entrance
- Main Entrance
- Admitting/Lab Drive Station
- Medical Office Building
- Surgery
- Transfer Center
- Whittingham Pavilion
- Harriet Cancer Center
- Life Imaging Center
- Water Building

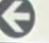
 **STAMFORD HOSPITAL**
Bennett Medical Center

 **EMERGENCY**

 **Ambulance Entrance** **G**

 **Main Entrance** **A**
Admitting/Lab Draw Station **A**

Medical Office Building **H**
Surgery **A**
Tandet Center **I**
Whittingham Pavilion **B**

 **Bennett Cancer Center** **C**
Jaffe Imaging Center **C**
Warner Building **C**

**Proposed installation
location of fuel cell
facility.**



Proposed installation location of fuel cell facility (looking south towards Hillhurst Street)