

REMOTE FIELD REVIEW



PROPOSED SOLAR FACILITY
81 EAST MAIN STREET
NORTH CANAAN, CONNECTICUT

PREPARED FOR:



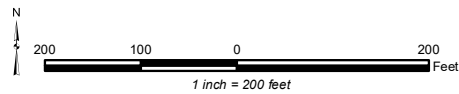
PREPARED BY:


ALL-POINTS TECHNOLOGY CORPORATION, P.C.
567 Vauxhall Street Extension – Suite 311
Waterford, CT 06385



PHOTO LOG

- | | | | |
|-------------------|---------------------------------------|----------------------|-------------------------------|
| ● Photo Locations | ▶ Perennial Stream | ■ Solar Modules | --- Interconnection Path (UD) |
| ● Photo Points | ▶ Delineated Intermittent Watercourse | ■ Conc. Equip. Pad | --- Perimeter Fence |
| ■ Site | ■ Vernal Pool | ■ Gravel Access Road | --- Limit of Disturbance |
| | --- Approximate Wetland Boundary | ■ Stormwater Basin | |




 Proposed Solar Facility
 81 East Main Street
 North Canaan, CT



PROPOSED ACCESS OVER EXISTING DRIVEWAY

PHOTO

DESCRIPTION

1

MAIN STREET LOOKING NORTHWEST



PHOTO

2

DESCRIPTION

MAIN STREET LOOKING EAST



PROPOSED ACCESS OVER EXISTING DRIVEWAY

PHOTO

3

DESCRIPTION

MAIN STREET LOOKING SOUTHEAST

PHOTOGRAPHED ON 1/15/2021



PHOTO

DESCRIPTION

4

ACCESS ROAD LOOKING WEST TOWARDS MAIN STREET



PHOTO

DESCRIPTION

4A

ACCESS ROAD LOOKING EAST TOWARDS PROPOSED FACILITY



DELINEATED INTERMITTENT WATERCOURSE

PHOTO

DESCRIPTION

5

ACCESS ROAD LOOKING EAST



PHOTO

DESCRIPTION

6

ACCESS ROAD LOOKING WEST

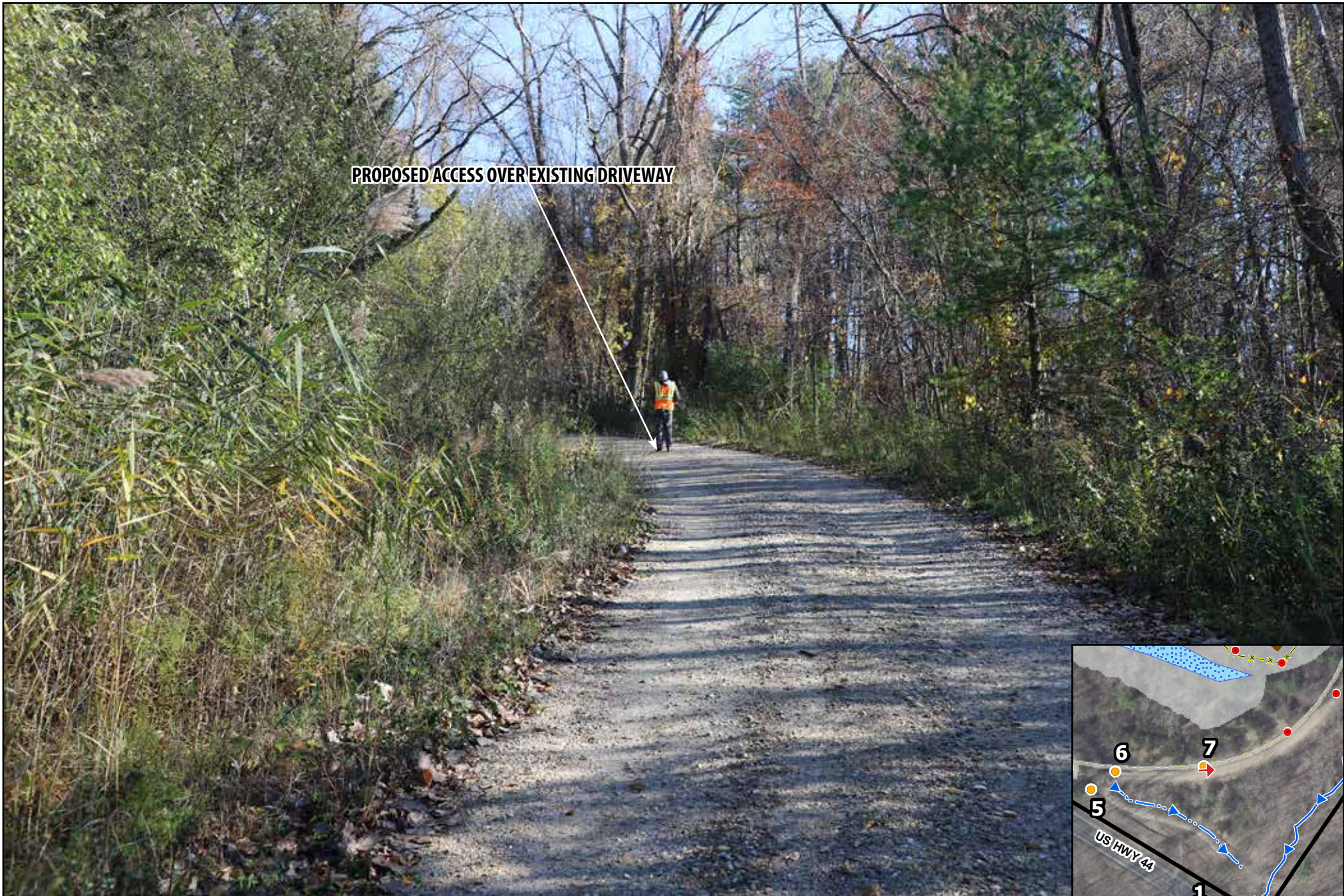


PHOTO

7A

DESCRIPTION

ACCESS ROAD LOOKING WEST



PROPOSED ACCESS OVER EXISTING DRIVEWAY

PHOTO

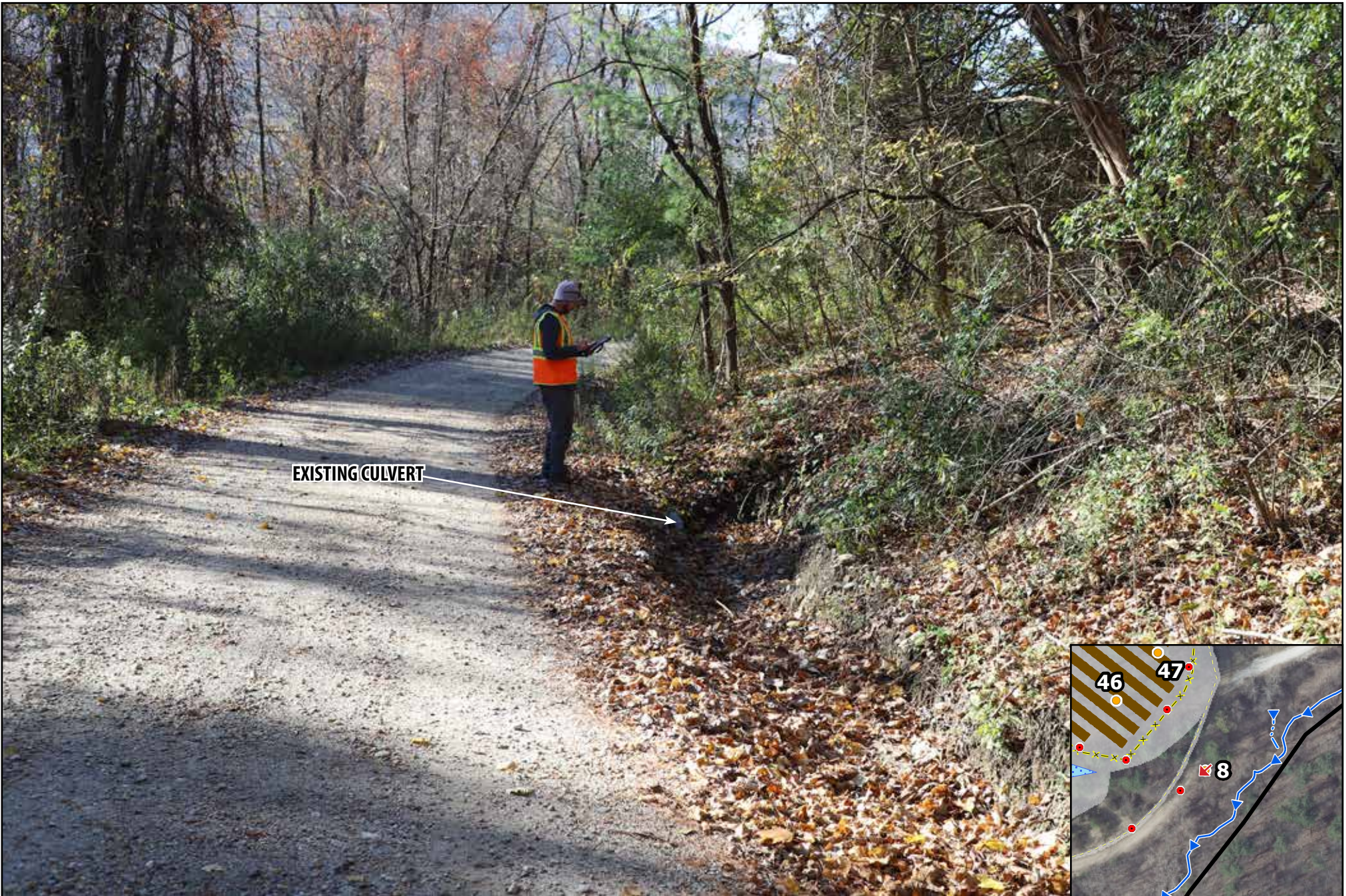
7B

DESCRIPTION

ACCESS ROAD LOOKING EAST



PHOTOGRAPHED ON 11/5/2021



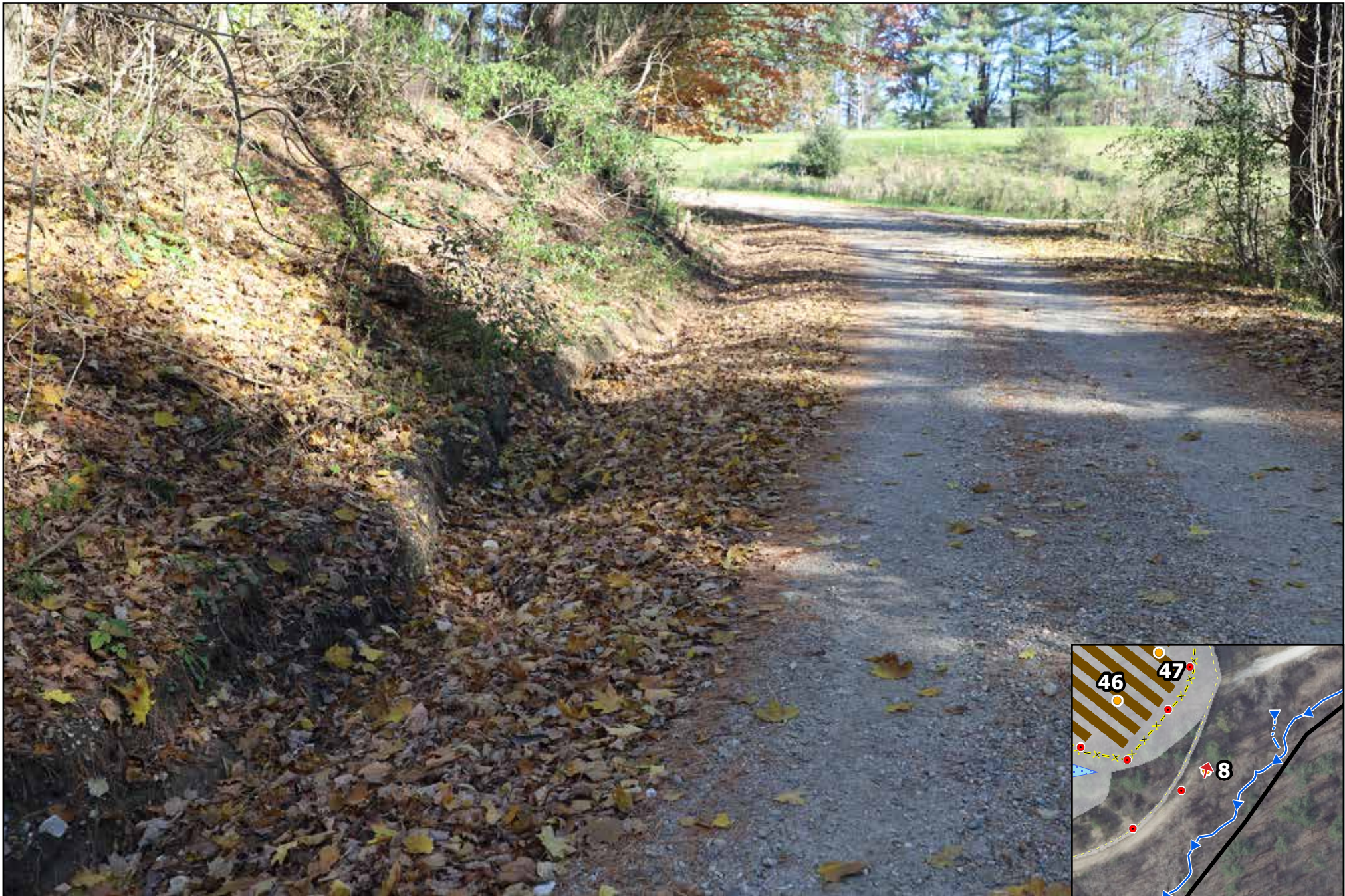
EXISTING CULVERT

PHOTO

DESCRIPTION

8A

ACCESS ROAD LOOKING SOUTHWEST



PHOTOGRAPHED ON 11/5/2021

PHOTO

8B

DESCRIPTION

ACCESS ROAD LOOKING NORTH



PROPOSED FENCELINE

PROPOSED STORMWATER BASIN

PHOTO

DESCRIPTION

9

ACCESS ROAD LOOKING NORTH



PHOTOGRAPHED ON 1/15/2021

PHOTO

DESCRIPTION

10A

LOOKING NORTHEAST TOWARDS APPROXIMATE WETLAND BOUNDARY



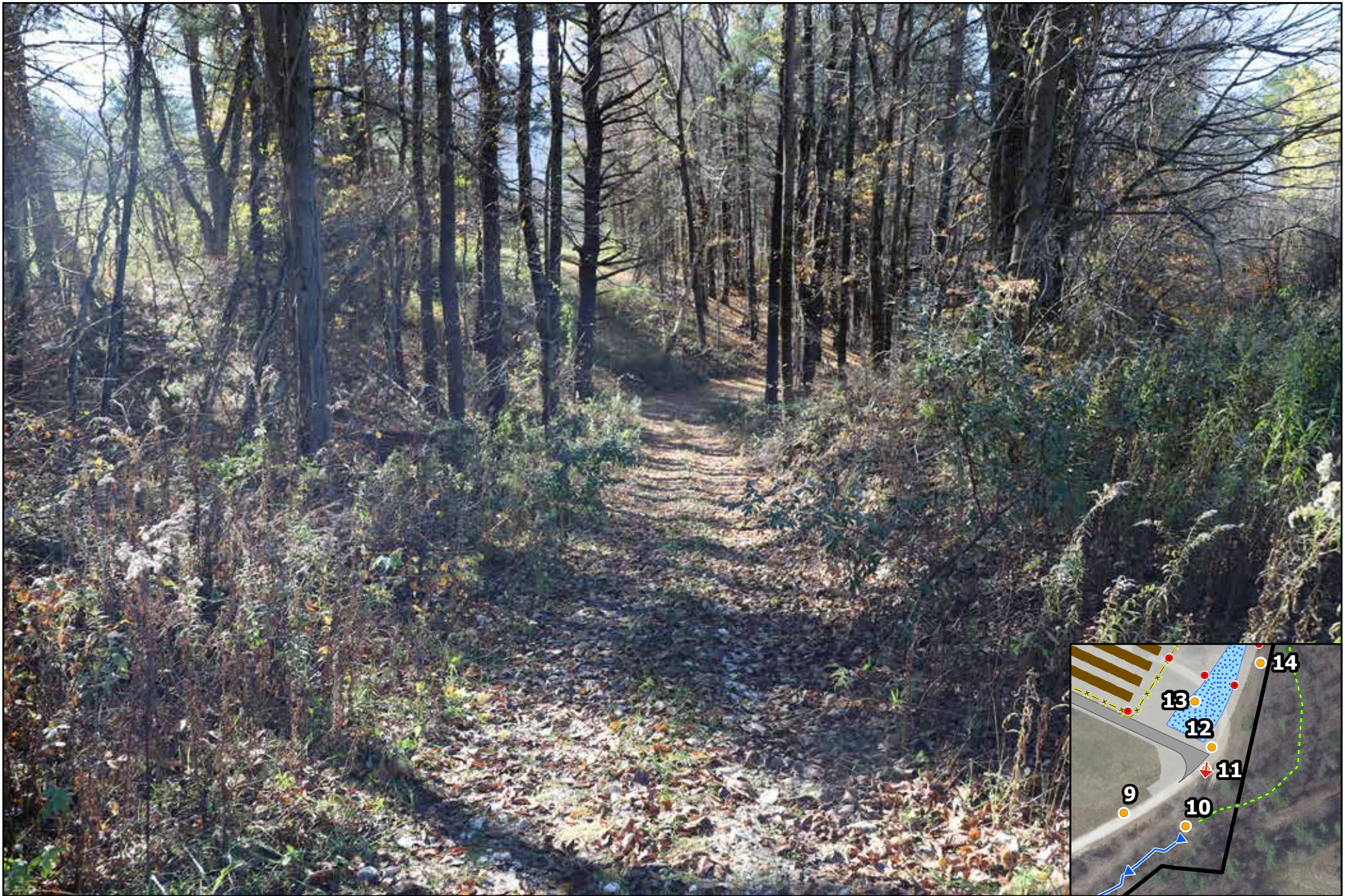
PHOTOGRAPHED ON 1/15/2021

PHOTO

DESCRIPTION

10B

LOOKING SOUTHWEST TOWARDS PERENNIAL STREAM



PHOTO

11

DESCRIPTION

LOOKING SOUTH

PHOTOGRAPHED ON 1/15/2021

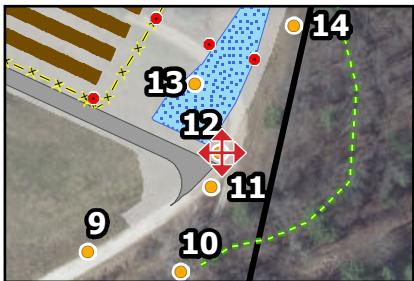


PHOTO	DESCRIPTION
12	VIEW FROM EASTERN EDGE OF PROPOSED PROJECT AREA - FOUR CARDINAL POINTS

PHOTOGRAPHED ON 11/5/2021



PROPOSED STORMWATER BASIN

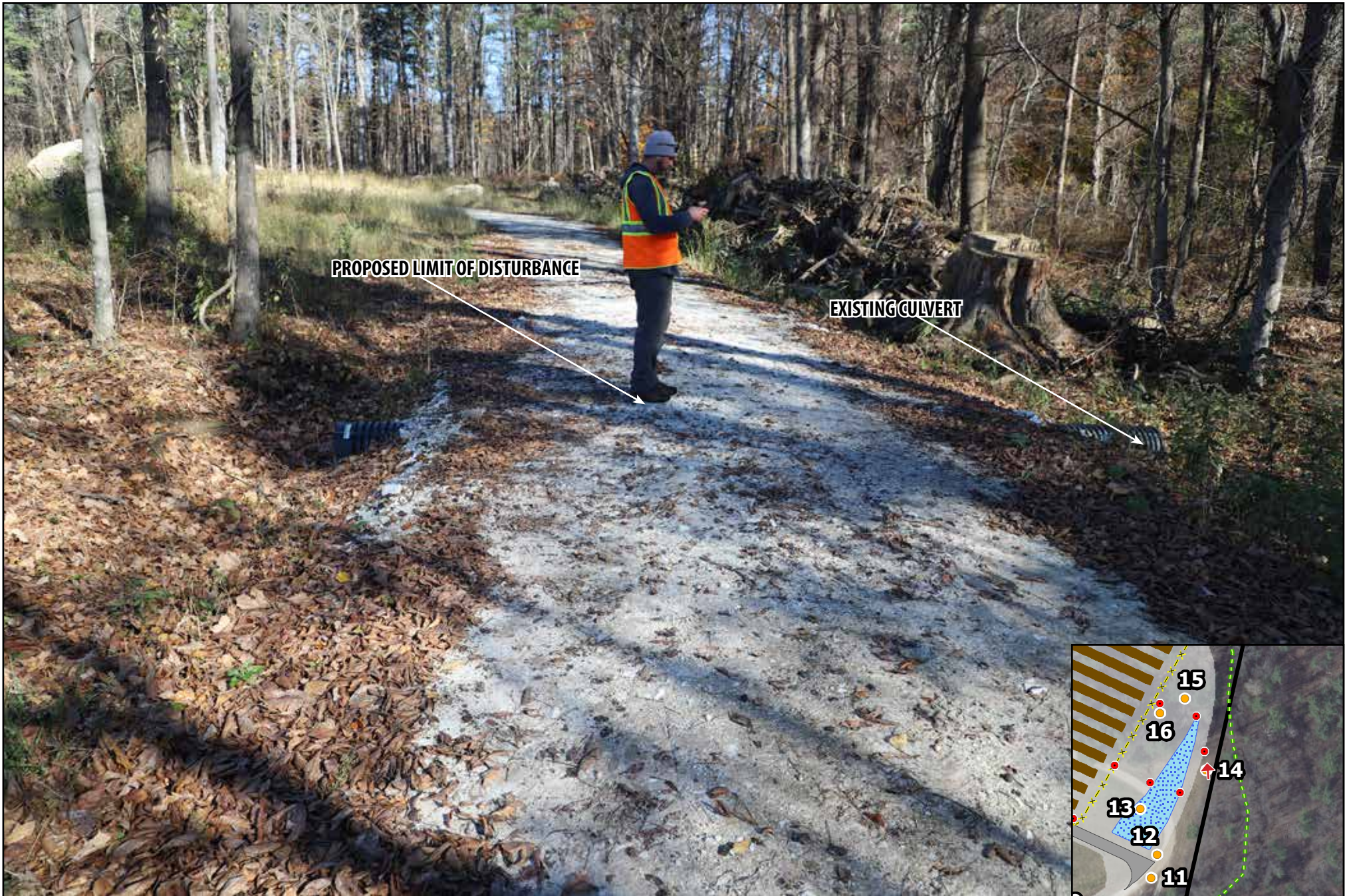
PHOTO

13

DESCRIPTION

LOOKING NORTHEAST

PHOTOGRAPHED ON 1/15/2021



PHOTOGRAPHED ON 1/15/2021

PHOTO

14

DESCRIPTION

LOOKING NORTH



PROPOSED STORMWATER BASIN

PHOTO
15

DESCRIPTION
LOOKING SOUTHEAST

PHOTOGRAPHED ON 1/15/2021



PROPOSED FENCELINE

PHOTO

16

DESCRIPTION

PROPOSED FENCELINE LOOKING NORTH

PHOTOGRAPHED ON 11/5/2021



PHOTO

17

DESCRIPTION

LOOKING SOUTHWEST



NORTH



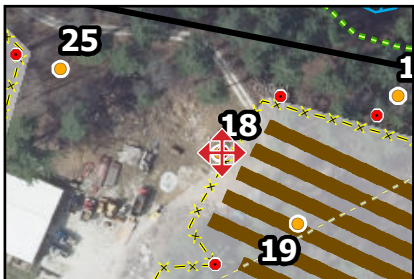
EAST



SOUTH



WEST



PHOTO

18

DESCRIPTION

VIEW FROM PROPOSED FENCELINE - FOUR CARDINAL POINTS

PHOTOGRAPHED ON 11/5/2021



PROPOSED FENCELINE

PHOTO

19

DESCRIPTION

LOOKING SOUTHWEST



PROPOSED FENCELINE

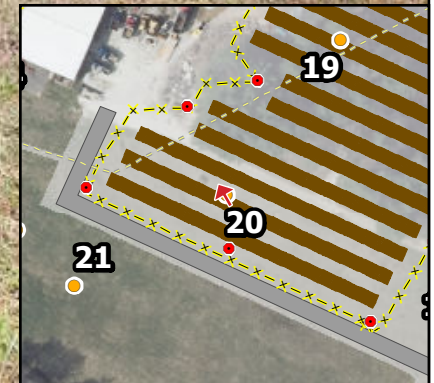


PHOTO
20

DESCRIPTION
LOOKING NORTHWEST



PROPOSED FENCE CORNER

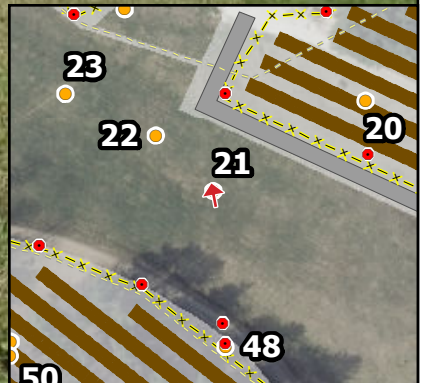


PHOTO
21A

DESCRIPTION
LOOKING NORTH



PROPOSED FENCELINE

PHOTO
21B

DESCRIPTION
LOOKING SOUTHWEST

PHOTOGRAPHED ON 1/15/2021



NORTH



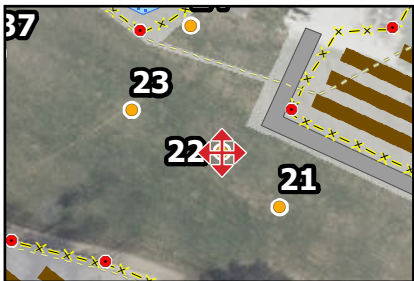
EAST



SOUTH



WEST



PHOTO

22

DESCRIPTION

VIEW FROM AIR FIELD - FOUR CARDINAL POINTS

PHOTOGRAPHED ON 11/5/2021



PROPOSED FENCELINE

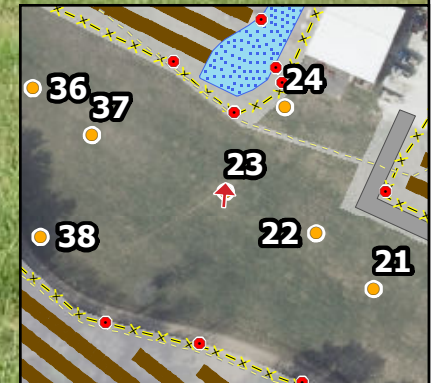


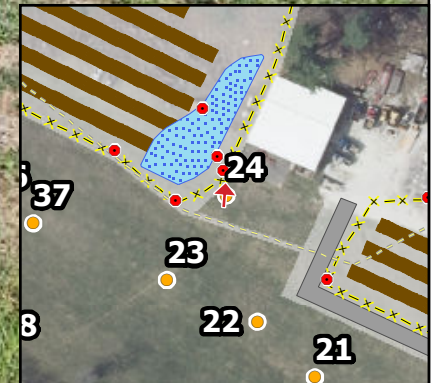
PHOTO
23

DESCRIPTION
LOOKING NORTH



PROPOSED STORMWATER BASIN

PROPOSED FENCELINE



PHOTOGRAPHED ON 11/5/2021

PHOTO

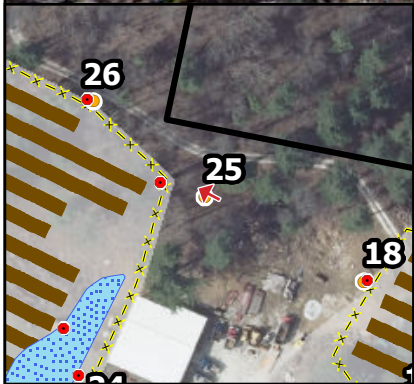
24

DESCRIPTION

LOOKING NORTH



PROPOSED FENCELINE



PHOTO

25

DESCRIPTION

LOOKING NORTHWEST

PHOTOGRAPHED ON 11/5/2021



PHOTOGRAPHED ON 1/15/2021

PHOTO

26

DESCRIPTION

LOOKING NORTHWEST



PROPOSED FENCE CORNER

PHOTOGRAPHED ON 11/15/2021

PHOTO
27

DESCRIPTION
LOOKING SOUTHWEST



PHOTOGRAPHED ON 11/5/2021

PHOTO

28

DESCRIPTION

LOOKING SOUTHWEST

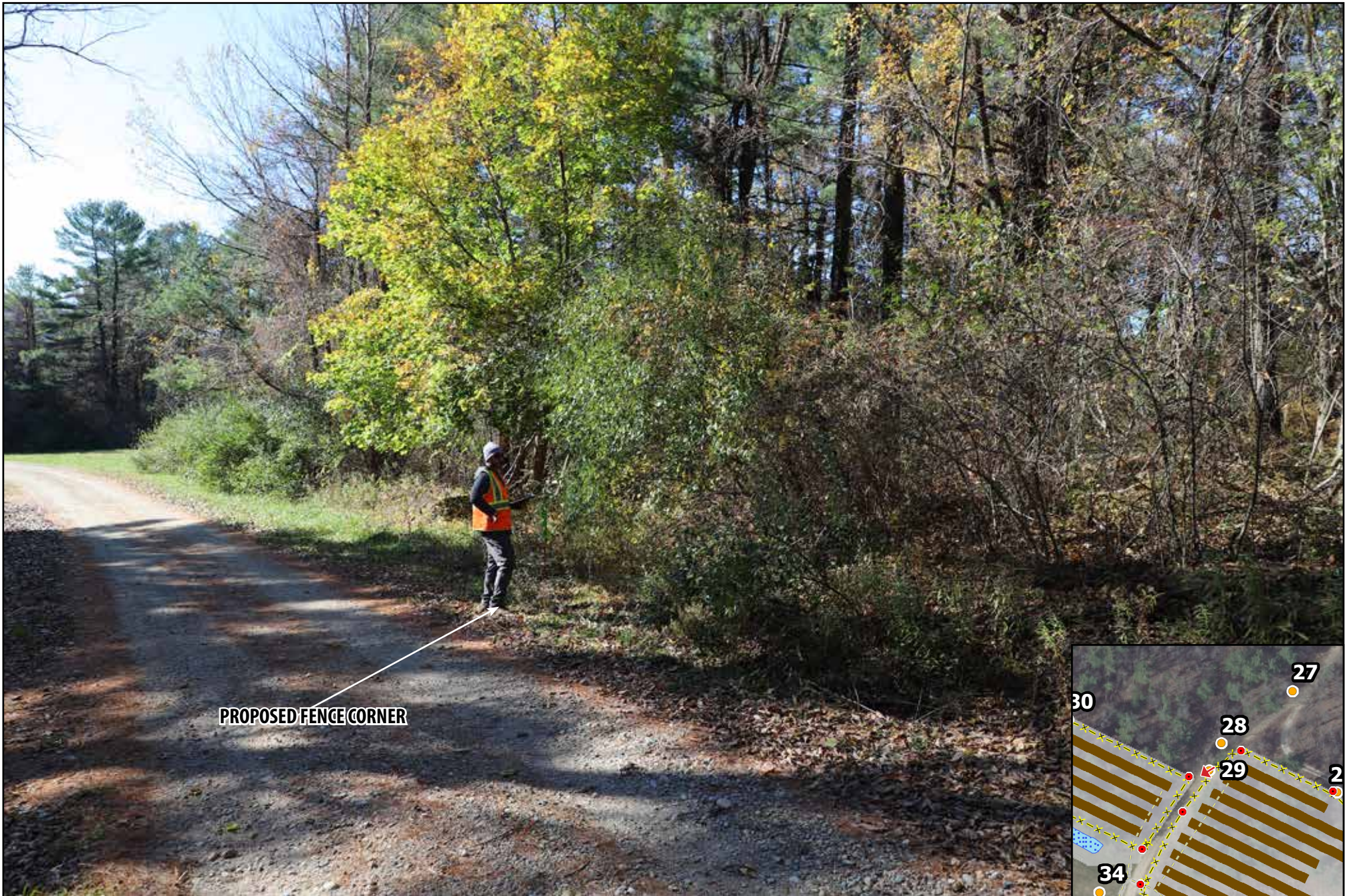
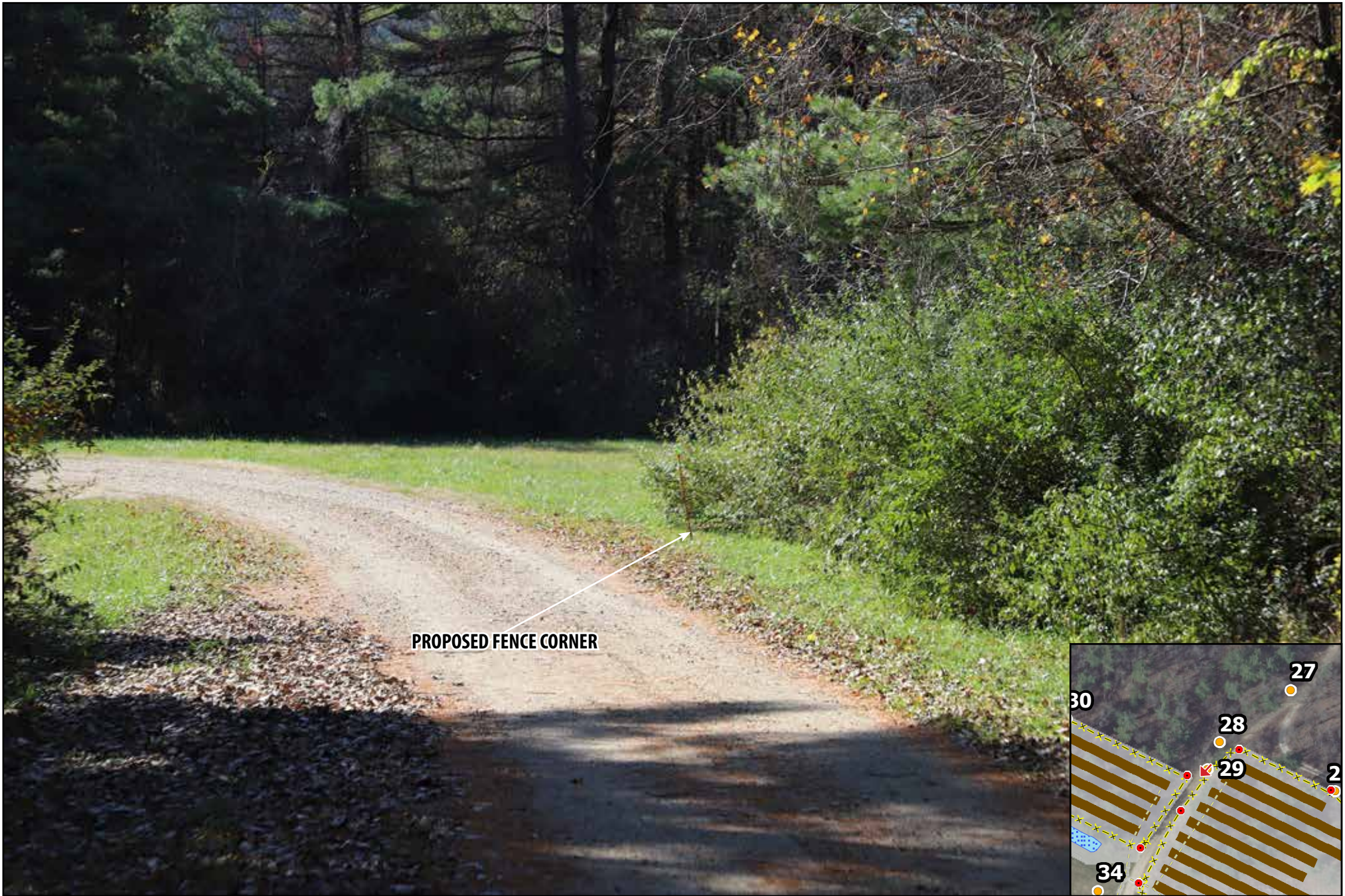
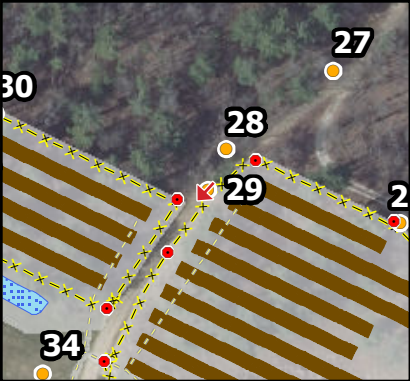


PHOTO
29A

DESCRIPTION
LOOKING SOUTHWEST



PROPOSED FENCE CORNER



PHOTOGRAPHED ON 11/15/2021

PHOTO
29B

DESCRIPTION
LOOKING SOUTHWEST



PHOTOGRAPHED ON 1/15/2021

PHOTO

30

DESCRIPTION

LOOKING WEST

PROPOSED FENCELINE



PROPOSED FENCELINE

31

33

30

32

31

PHOTO

DESCRIPTION

31

LOOKING SOUTHWEST

PHOTOGRAPHED ON 1/15/2021



PHOTOGRAPHED ON 11/5/2021

PHOTO

32

DESCRIPTION

LOOKING SOUTH



PROPOSED FENCELINE

PHOTO

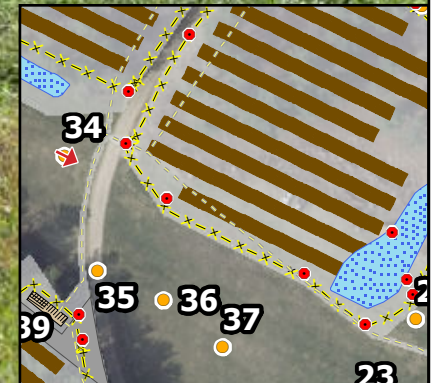
33

DESCRIPTION

LOOKING SOUTH



PROPOSED FENCELINE



PHOTOGRAPHED ON 1/15/2021

PHOTO

34

DESCRIPTION

LOOKING SOUTHEAST

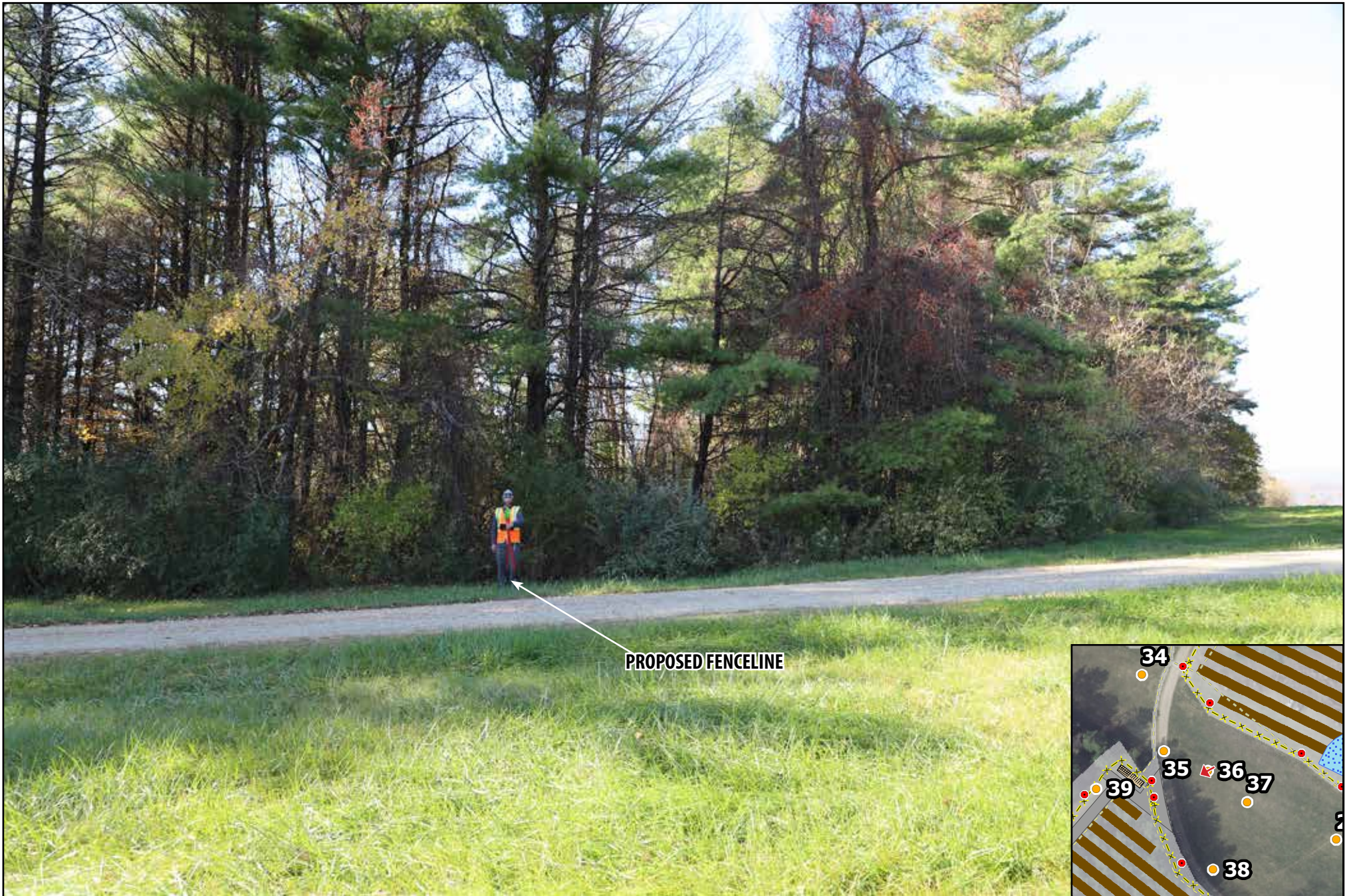


PHOTO

35

DESCRIPTION

LOOKING SOUTHEAST



PHOTOGRAPHED ON 1/15/2021

PHOTO

36

DESCRIPTION

LOOKING SOUTHWEST



PROPOSED FENCELINE

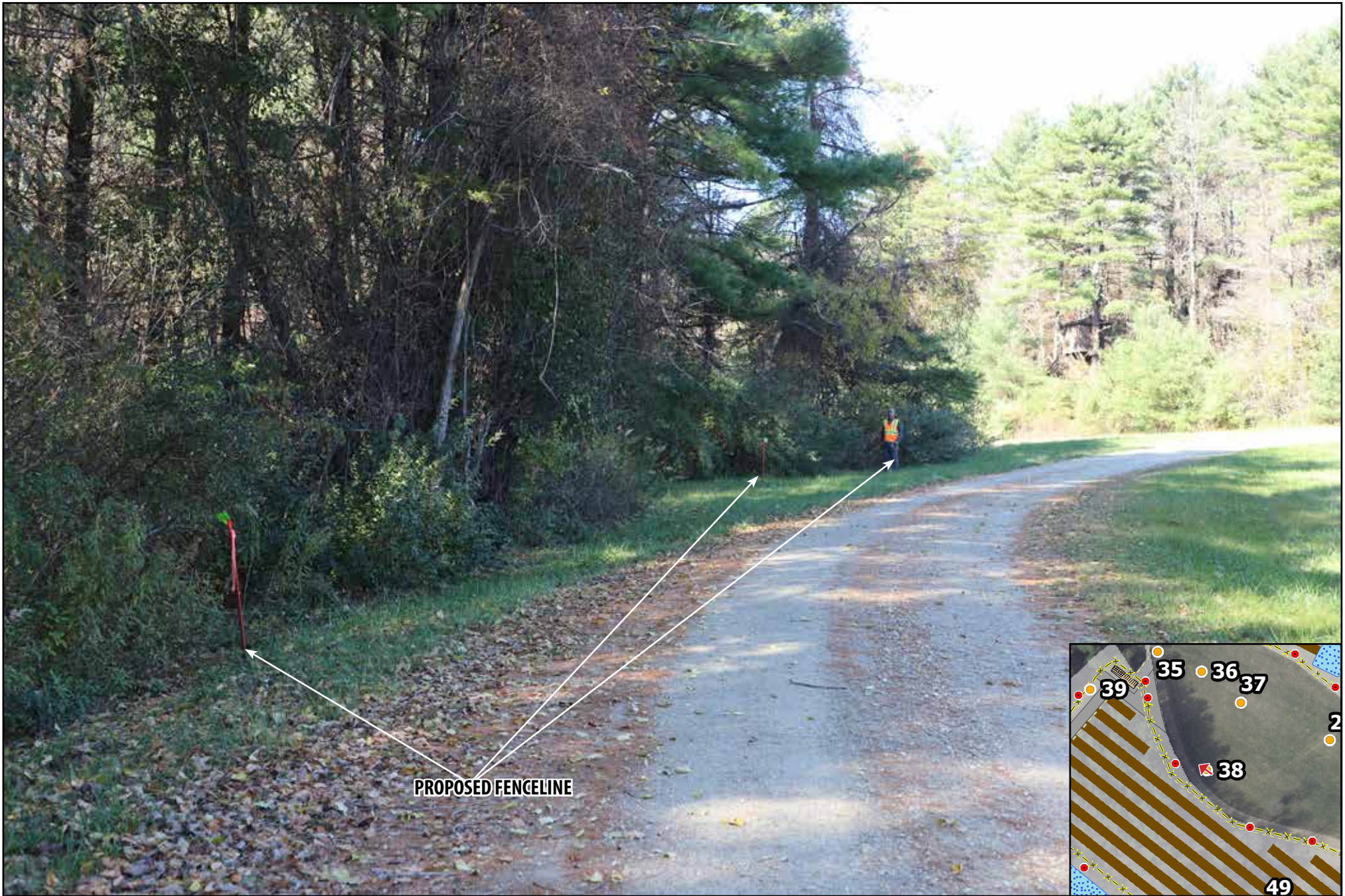
PHOTO

DESCRIPTION

37

LOOKING SOUTHWEST

PHOTOGRAPHED ON 1/15/2021



PROPOSED FENCELINE

PHOTO

38

DESCRIPTION

LOOKING NORTHWEST



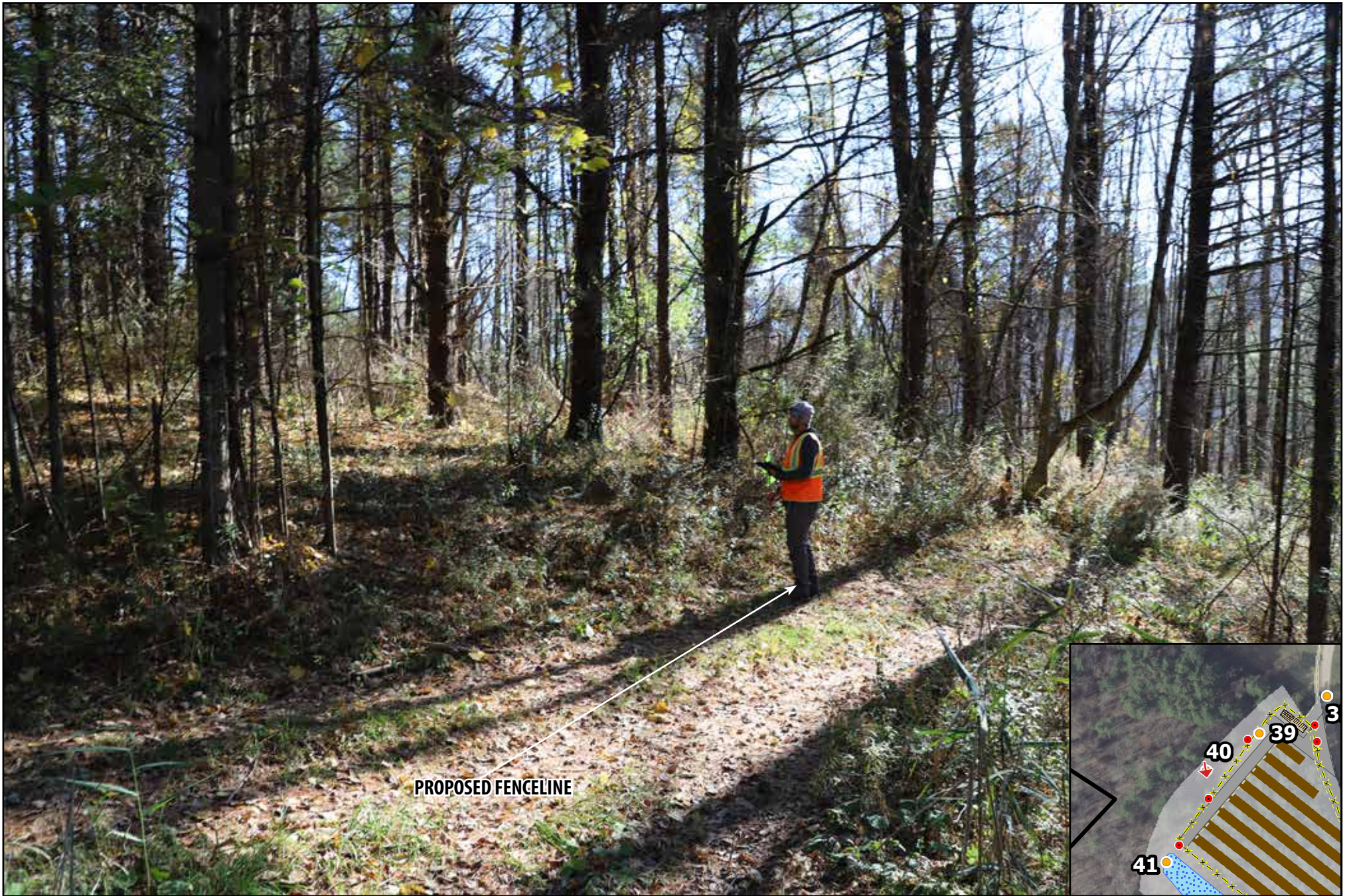
PROPOSED FENCELINE

PHOTO

39

DESCRIPTION

LOOKING SOUTHWEST



PHOTO

40

DESCRIPTION

LOOKING SOUTH



PROPOSED FENCE CORNER

PHOTOGRAPHED ON 11/5/2021

PHOTO

41

DESCRIPTION

LOOKING NORTHEAST



PHOTOGRAPHED ON 11/5/2021

PHOTO

41

DESCRIPTION

LOOKING NORTHEAST



PHOTO

42

DESCRIPTION

LOOKING NORTHEAST



PHOTO

43

DESCRIPTION

LOOKING NORTHEAST



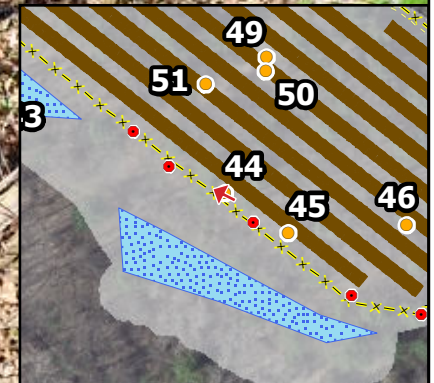
PHOTO

44

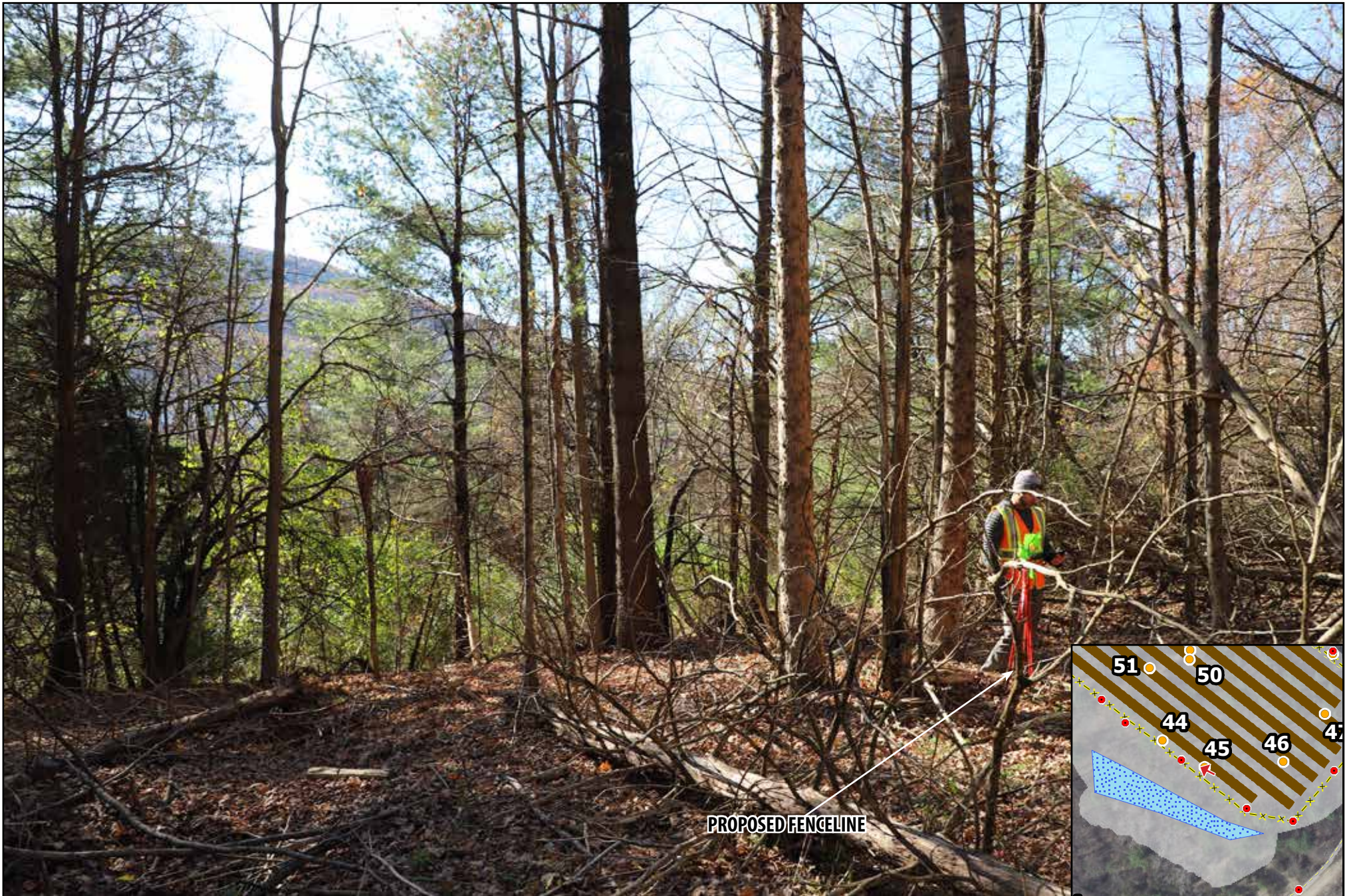
DESCRIPTION

LOOKING NORTHWEST

PROPOSED FENCELINE



PHOTOGRAPHED ON 1/15/2021



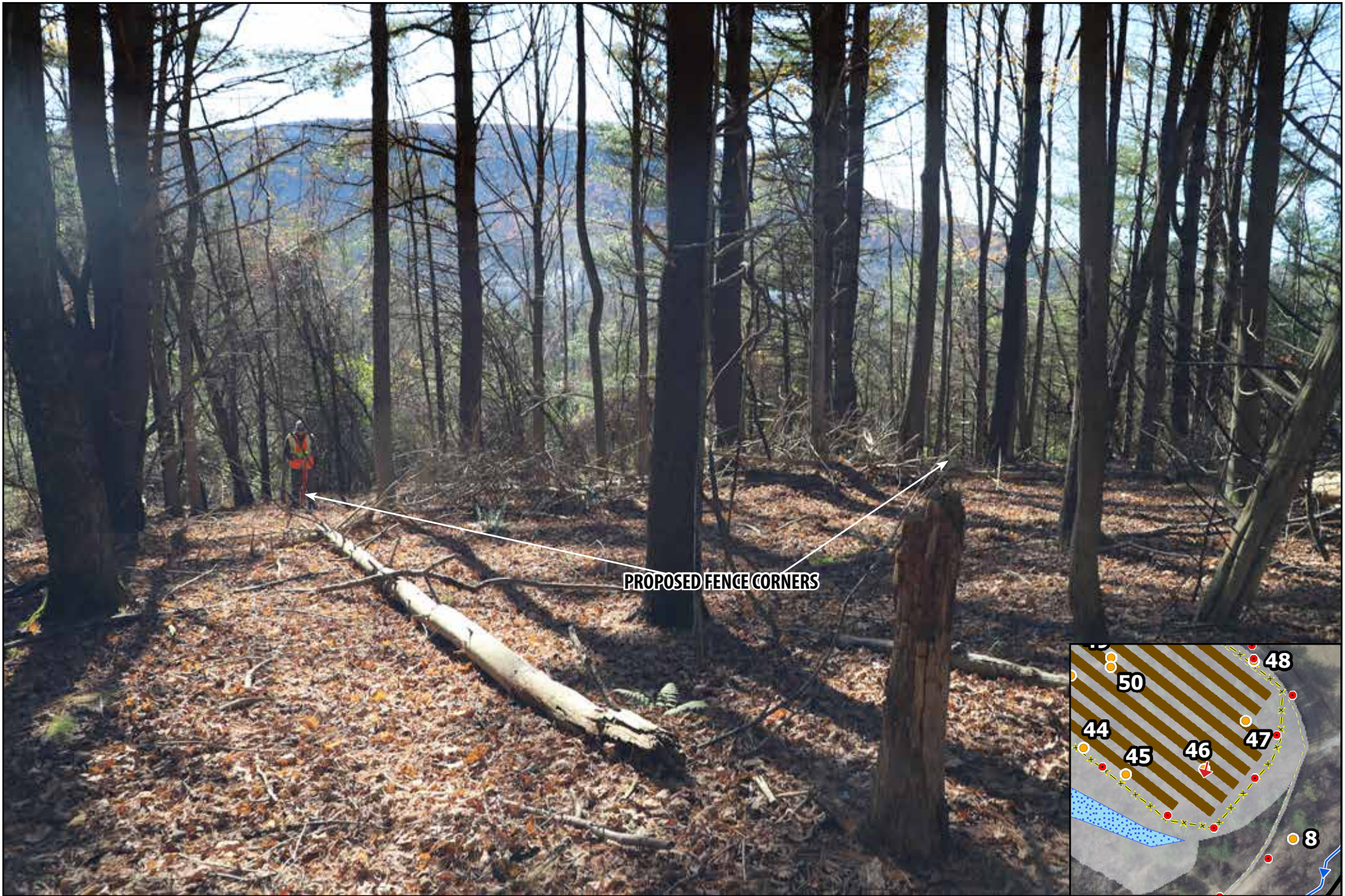
PROPOSED FENCELINE

PHOTO

45

DESCRIPTION

LOOKING NORTHWEST



PHOTO

46

DESCRIPTION

LOOKING SOUTH



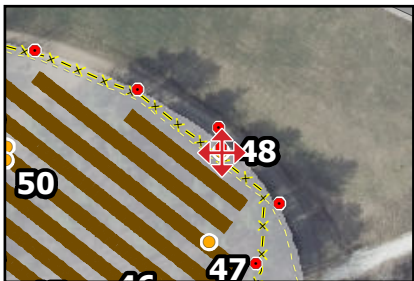
PHOTOGRAPHED ON 1/15/2021

PHOTO

47

DESCRIPTION

LOOKING SOUTHEAST



PHOTO

48

DESCRIPTION

FOUR CARDINAL POINTS

PHOTOGRAPHED ON 11/5/2021



PROPOSED FENCELINE

PHOTOGRAPHED ON 11/15/2021

PHOTO

49

DESCRIPTION

LOOKING NORTH



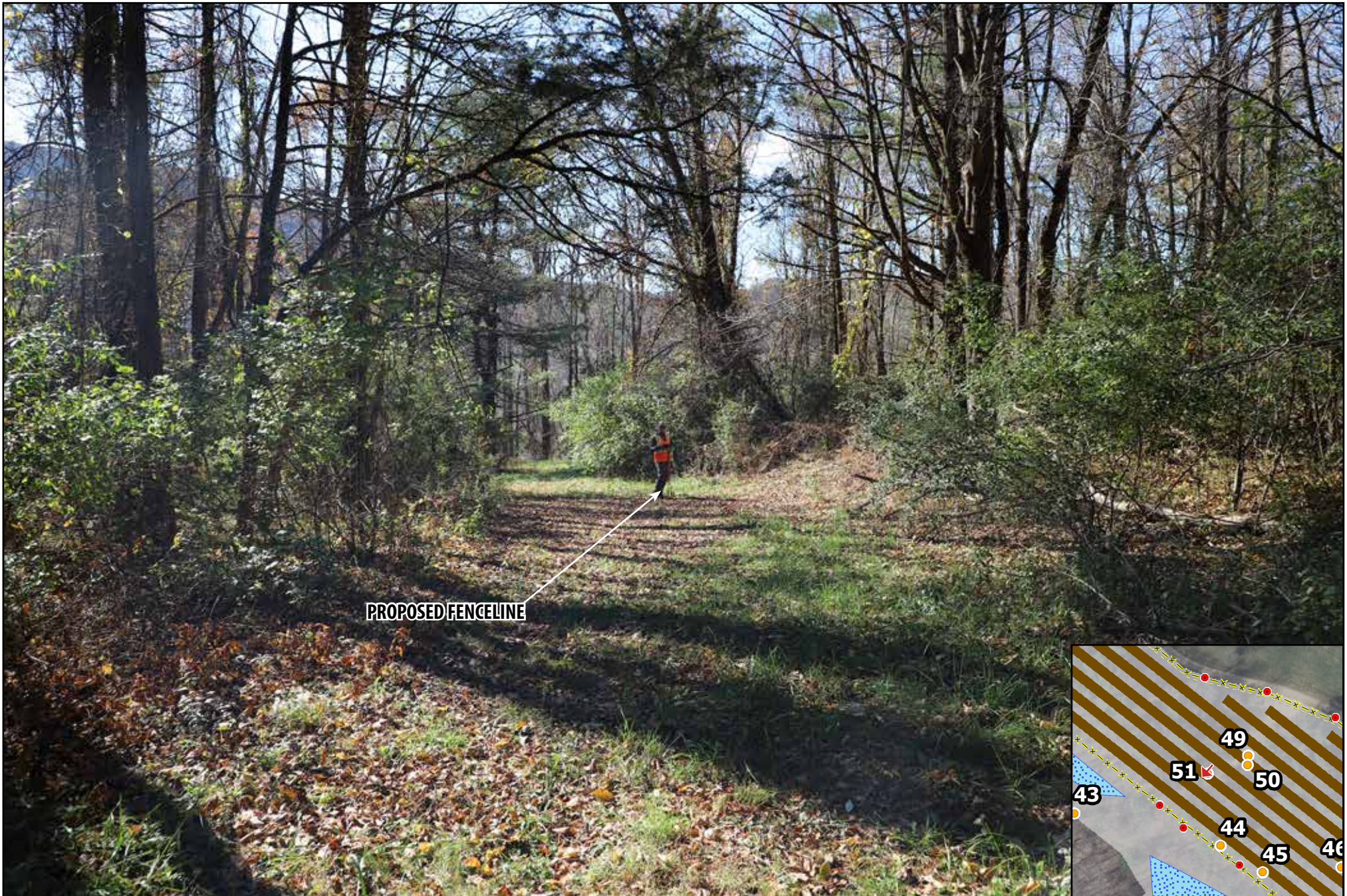
PHOTO

50

DESCRIPTION

FOUR CARDINAL POINTS

PHOTOGRAPHED ON 11/5/2021



PROPOSED FENCELINE

PHOTOGRAPHED ON 11/5/2021

PHOTO

51

DESCRIPTION

LOOKING SOUTHWEST