



January 19, 2022

Melanie Bachman, Esq.
Executive Director
Connecticut Siting Council
10 Franklin Square
New Britain, CT 06051

RE: PETITION NO. 1441 - Bloom Energy Corporation petition for a declaratory ruling, pursuant to Connecticut General Statutes §4-176 and §16-50k, for the proposed construction, maintenance and operation of a customer-side 1,750-kilowatt fuel cell facility and associated equipment to be located at Yale New Haven/Lawrence & Memorial Hospital, 412 Ocean Avenue, New London, Connecticut

Dear Attorney Bachman:

On May 7th, 2021, the Connecticut Siting Council (“Council”) approved by declaratory ruling a proposed Bloom Energy Corporation (“Bloom”) fuel cell facility (the “Facility”) at the Yale New Haven/ Lawrence & Memorial Hospital located at 412 Ocean Avenue, New London CT (the “Site”).

Since that time, a minor change has occurred to the underground utility locate, due to the ethernet company looking to pull from a street utility pole and connect to our equipment pad. The last 10’ of the conduit run extends beyond the hospital property line into the public right of way. We are respectfully requesting the Council’s review and approval on this change.

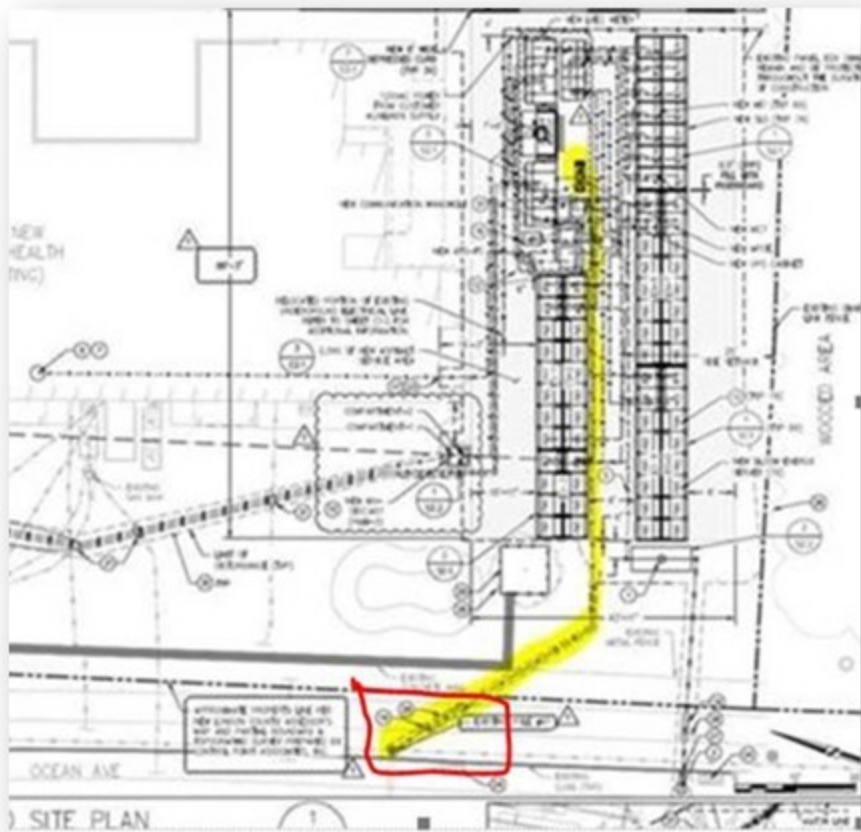
Should you have any questions, concerns, or require additional information, please contact me at (917) 803-4511.

Sincerely,
Bloom Energy

Kristen Grillo
Senior Permitting Specialist
kristen.grillo@bloomenergy.com
(917) 803-4511

Attachments

cc: Honorable Joseph M. Cavo, Mayor, City of Danbury



SITE PLAN

PROPERTY
LONDON
DORSET'S MAP

YALE NEW
HAVEN HEALTH
(EXISTING)

NEW CONNECTION HOUSE

RELOCATED PORTION OF EXISTING
UNDERGROUND ELECTRICAL LINE
REFER TO SHEET C1.6 FOR
ADDITIONAL INFORMATION

2.000' OF NEW ASPHALT
SERVICE AREA

EXISTING PANEL BOX SHALL
REMAIN AND BE PROTECTED
THROUGHOUT THE DURATION
OF CONSTRUCTION

NEW M1 (TYP 6X)

NEW SLS (TYP 1X)

0.5" (TYP)
FILL WITH
FOAMSTAND

NEW M2
CONCRETE Poured FROM
CUSTOMER AIRWAY SUPPLY

NEW L16C MESH

NEW UPS CABINET

1 (TYP 6X)
SOL.3

EXISTING CHAIN
LINK FENCE

WOODED AREA

15' SEE SETBACK (TYP 1X)

NEW 1500V ENERGY
SERVICES (TYP 1X)

2 (TYP 6X)
S2.2

2 (TYP 6X)
S2.2

NEW MV
RELOC-MOT

3 (TYP 6X)
S1.1

3 (TYP 6X)
S1.1

3 (TYP 6X)
S1.1

3 (TYP 6X)
S1.1

3 (TYP 6X)
S1.1

3 (TYP 6X)
S1.1

3 (TYP 6X)
S1.1

3 (TYP 6X)
S1.1

3 (TYP 6X)
S1.1

3 (TYP 6X)
S1.1

3 (TYP 6X)
S1.1

3 (TYP 6X)
S1.1

7
NEW 8" HOLE
DEPRESSURE CURB
(TYP 3X)
C1.1

2
S2.1

2
S2.1

2
S2.1

2
S2.1

2
S2.1

2
S2.1

2
S2.1

2
S2.1

2
S2.1

2
S2.1

2
S2.1

2
S2.1

2
S2.1

2
S2.1

2
S2.1

2
S2.1

2
S2.1

2
S2.1

45'
FRONT SETBACK

LIMIT OF
DISTURBANCE (TYP)

EXISTING GAS MGA

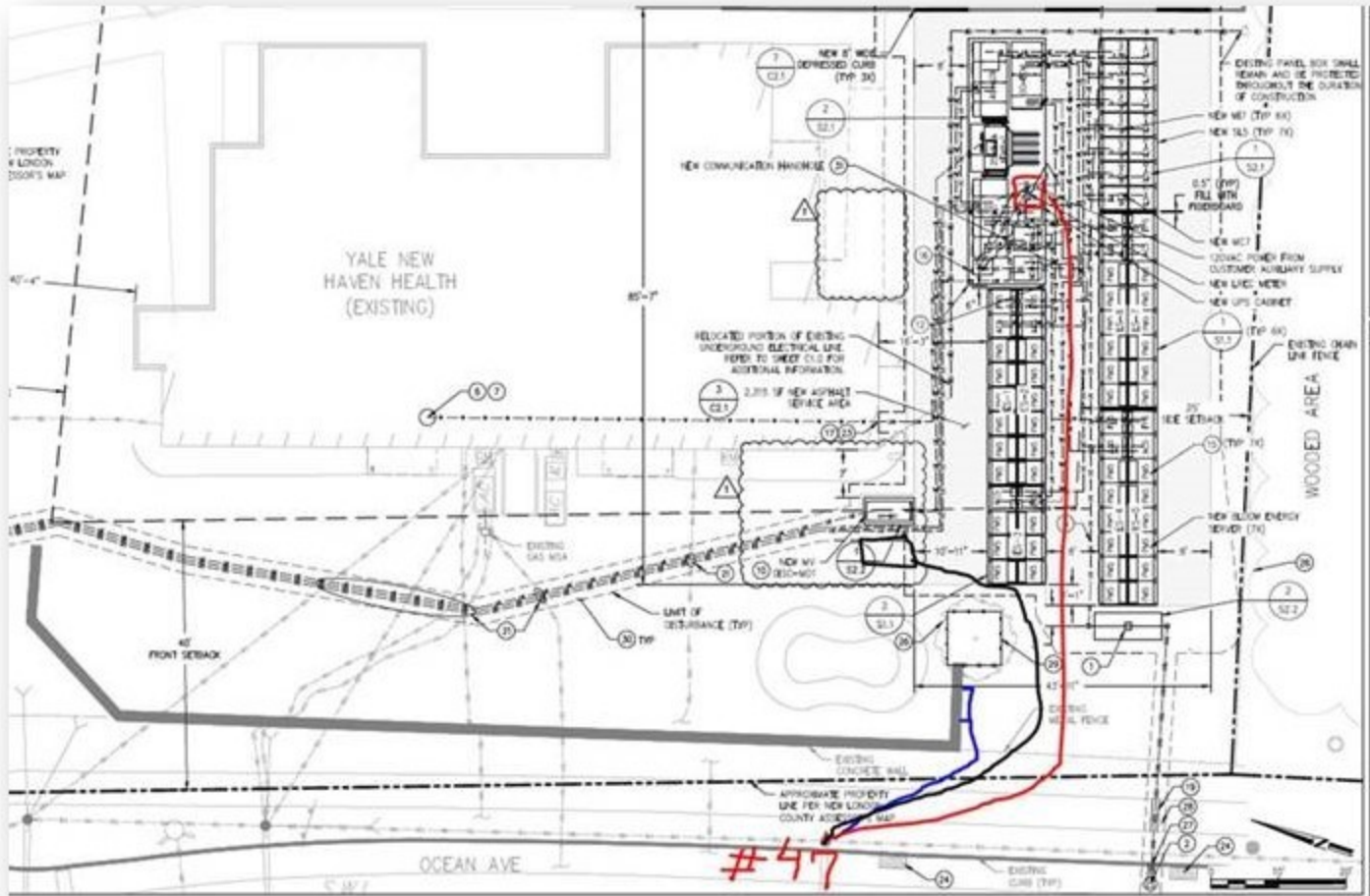
EXISTING
CONCRETE WALL
IN NEW HOUSE

APPROXIMATE PROPERTY
LINE PER NEW LONDON
COUNTY ASSESSOR'S MAP

OCEAN AVE

#477

EXISTING
CURB (TYP)



411 Ocean Ave

New London, Connecticut



Google



Street View - Nov 2021

