

Exhibit B

Project Site - Vicinity Maps

(Past and Present)

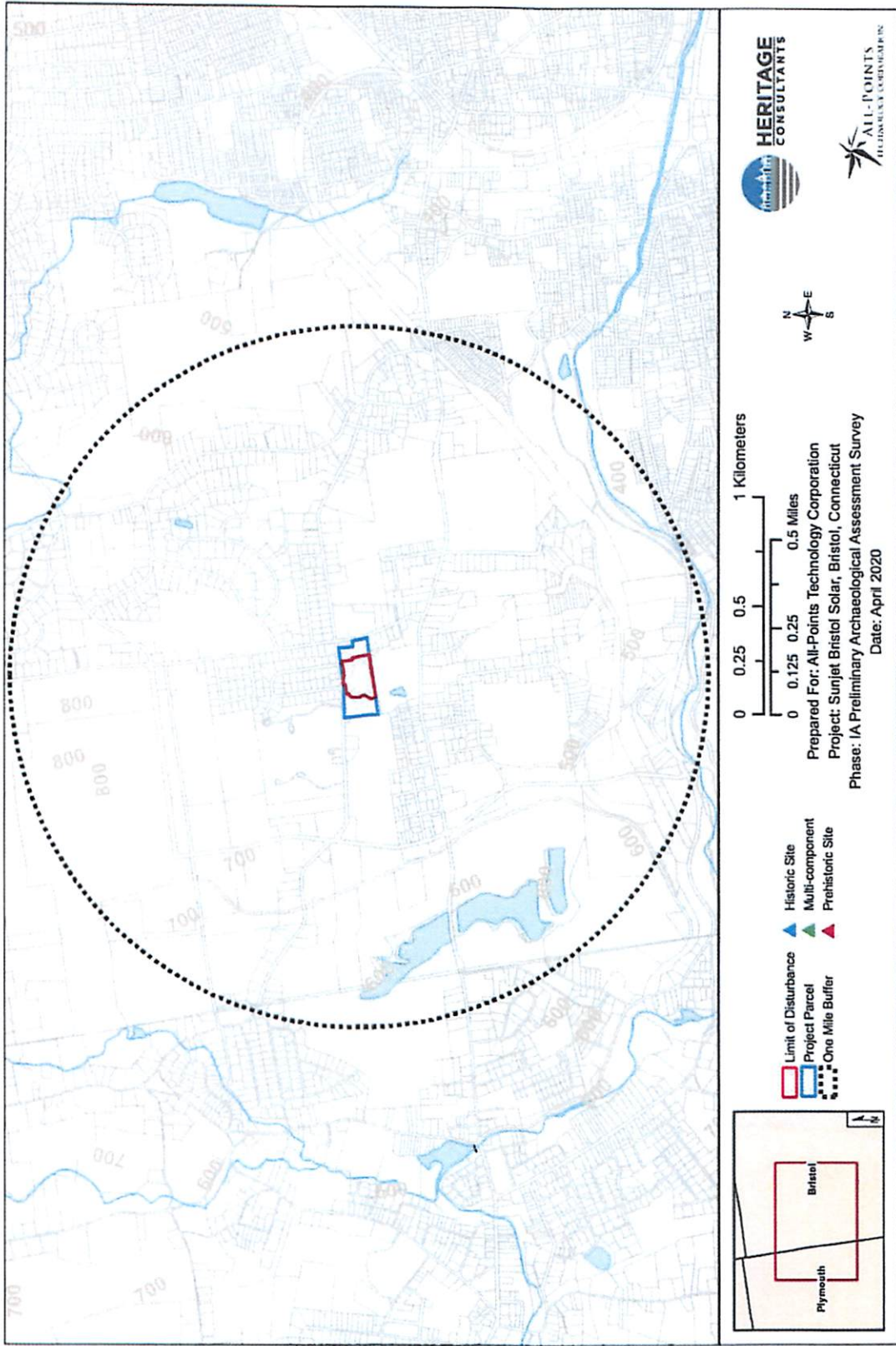


Figure 12. Digital map showing the location of previously identified archaeological sites in the vicinity of the project area in Bristol, Connecticut.

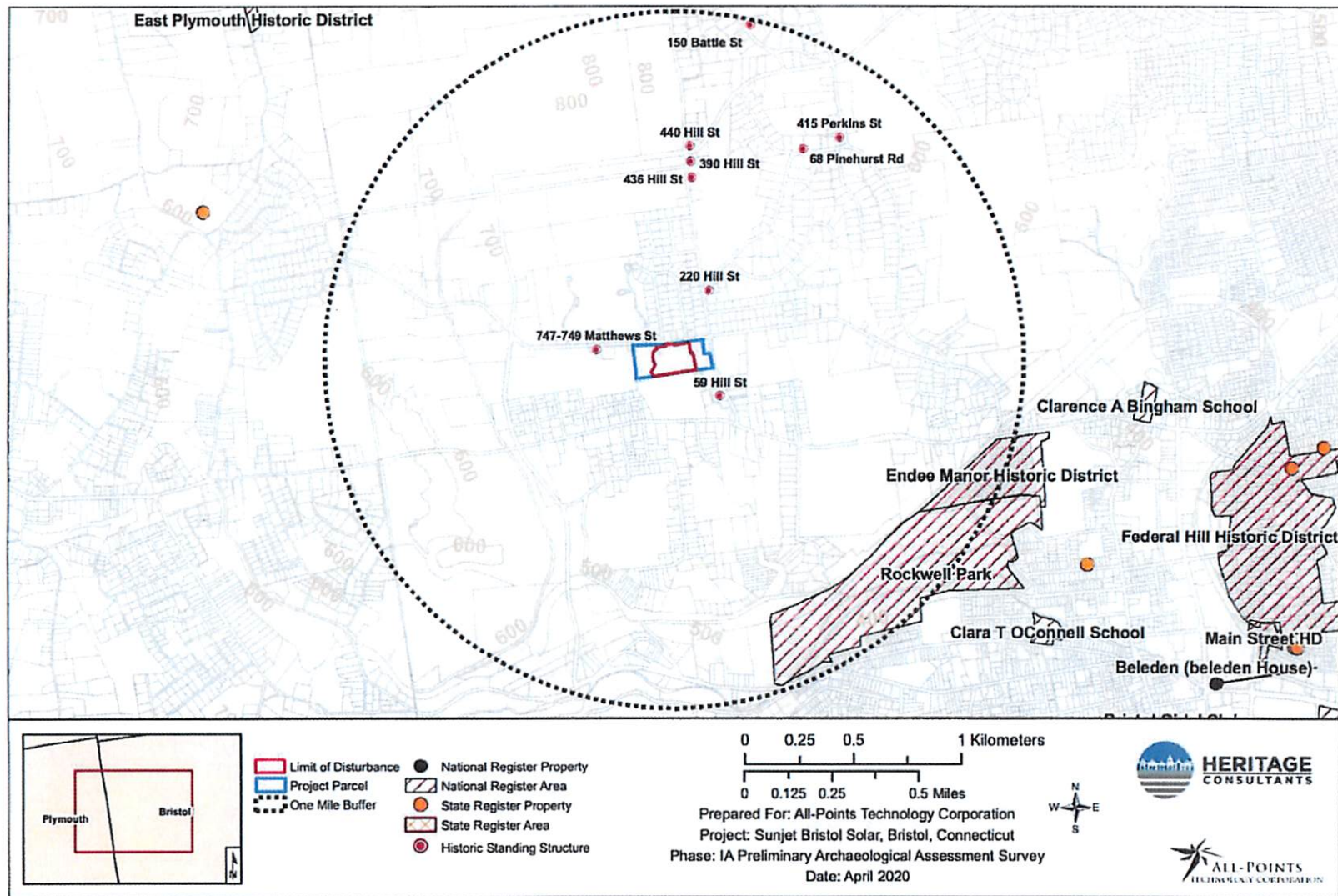


Figure 13. Digital map depicting the locations of previously identified National/State Register of Historic Places properties in the vicinity of the project area in Bristol, Connecticut.



Figure 14. Excerpt from 2019 aerial image of project area depicting photographs taken with directional arrows. North is top of page.

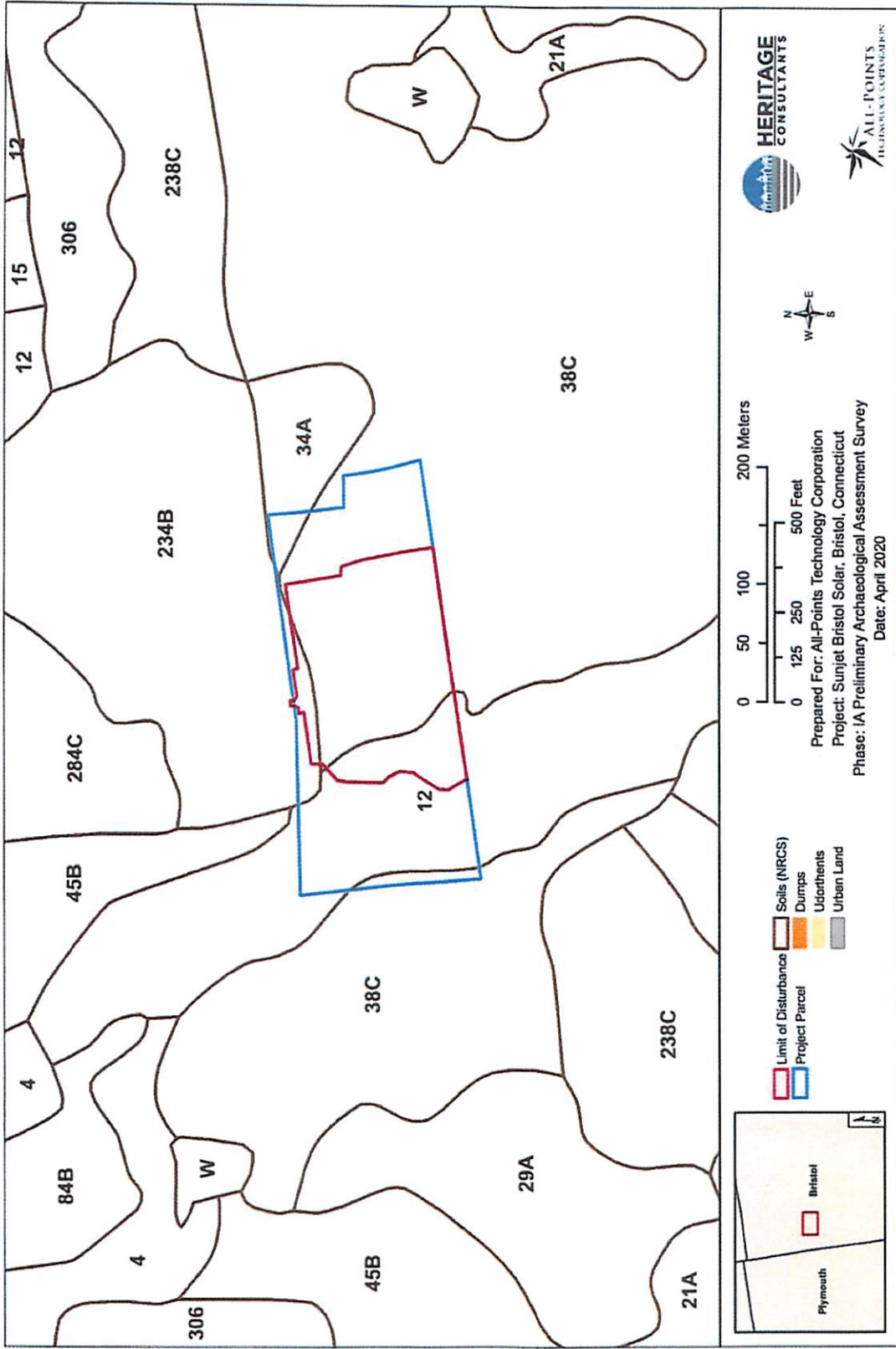


Figure 3. Map of soils located in the vicinity of the project area in Bristol, Connecticut.

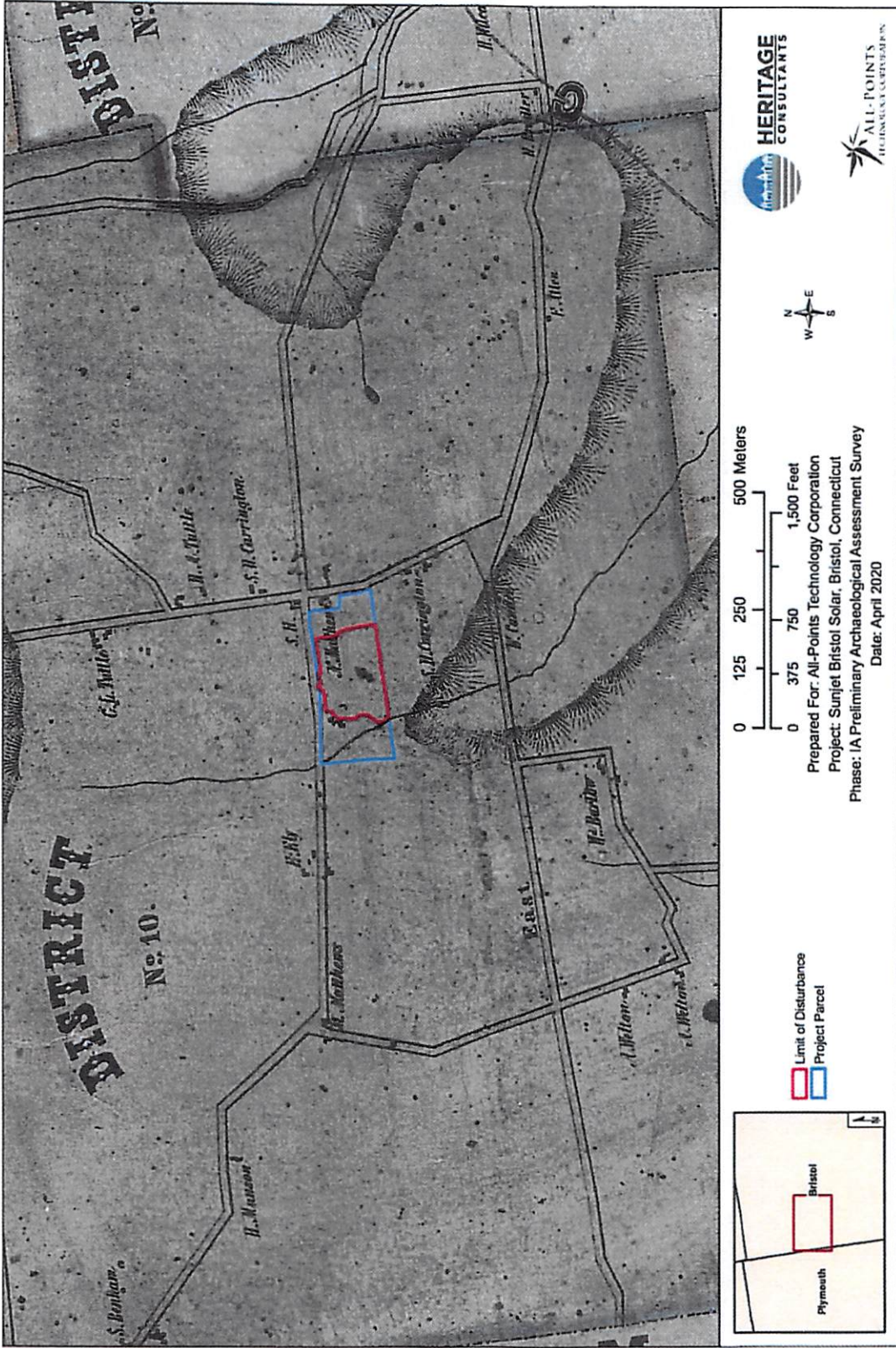


Figure 4. Excerpt from an 1852 historic map showing the location of the project area in Bristol, Connecticut.

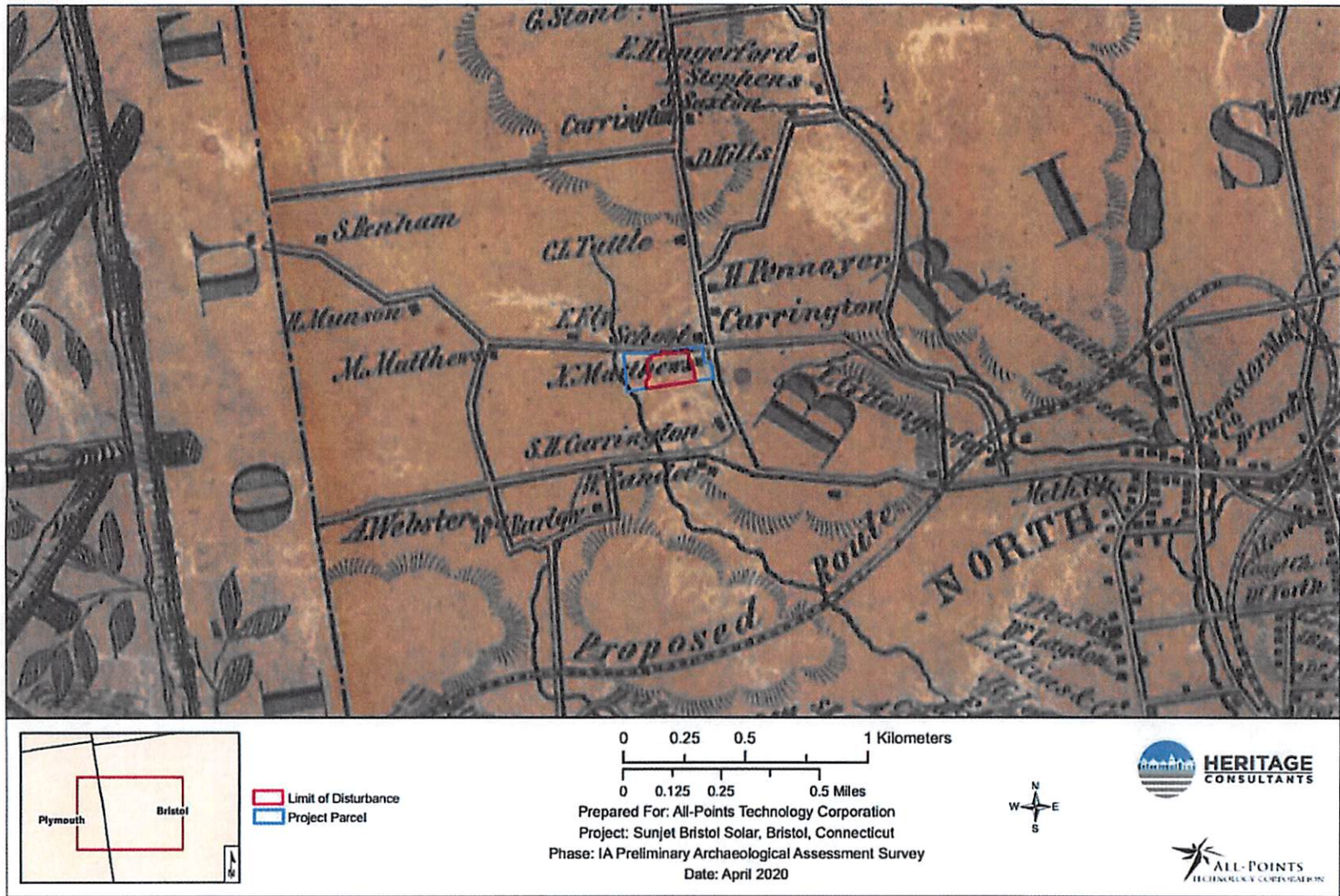


Figure 5. Excerpt from an 1855 historic map showing the location of the project area in Bristol, Connecticut.

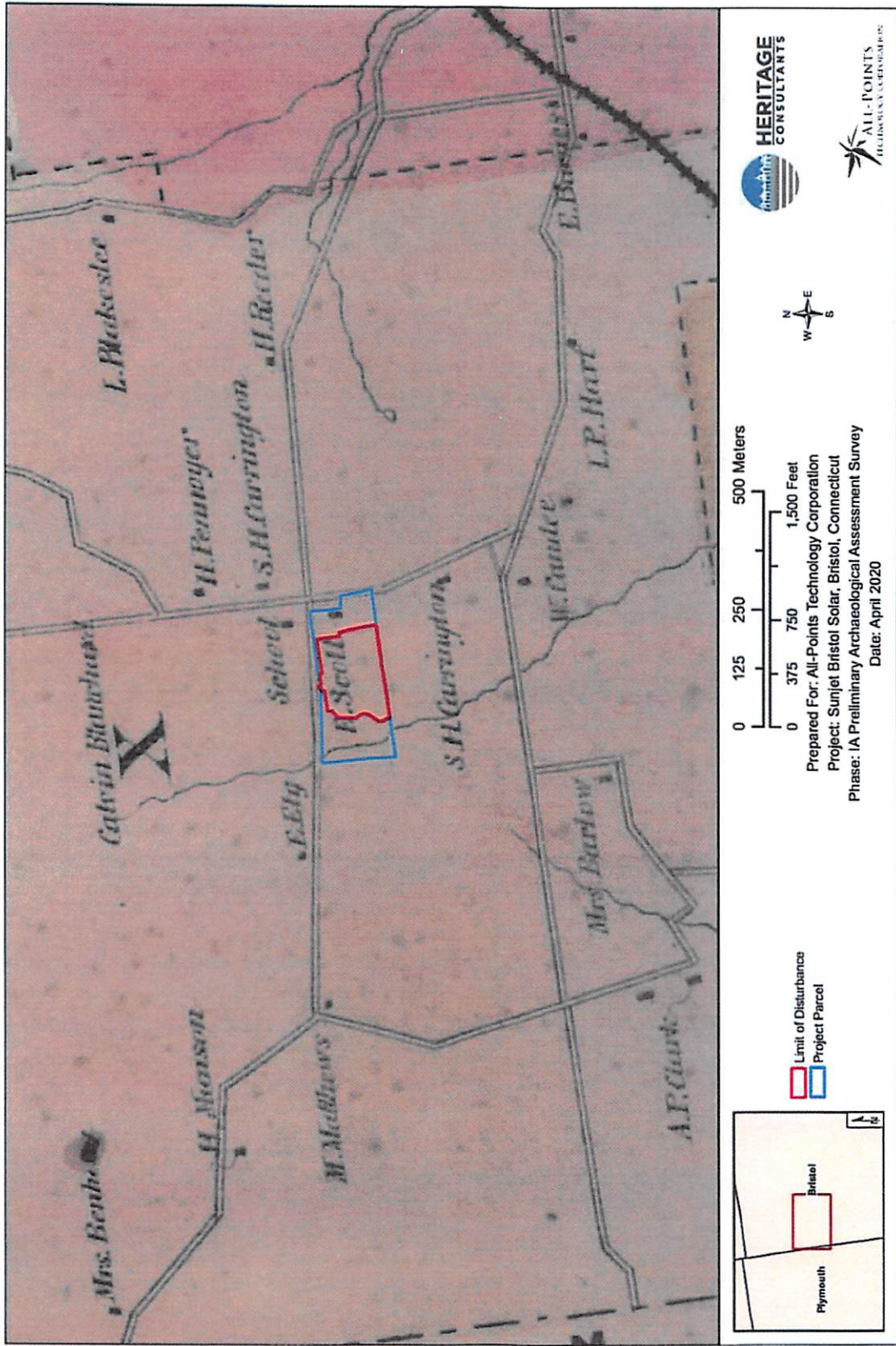


Figure 6. Excerpt from an 1869 historic map showing the location of the project area in Bristol, Connecticut.



HERITAGE CONSULTANTS

ALL-POINTS TECHNOLOGY CORPORATION

0 50 100 200 Meters

0 125 250 500 Feet

Prepared For: All-Points Technology Corporation
Project: Sunjet Bristol Solar, Bristol, Connecticut
Phase: IA Preliminary Archaeological Assessment Survey
Date: April 2020

Legend:
Limit of Disturbance (Red outline)
Project Parcel (Blue outline)

Map of Bristol and Plymouth showing the project location.

North Arrow

Figure 7. Excerpt from a 1934 aerial photograph showing the location of the project area in Bristol, Connecticut.

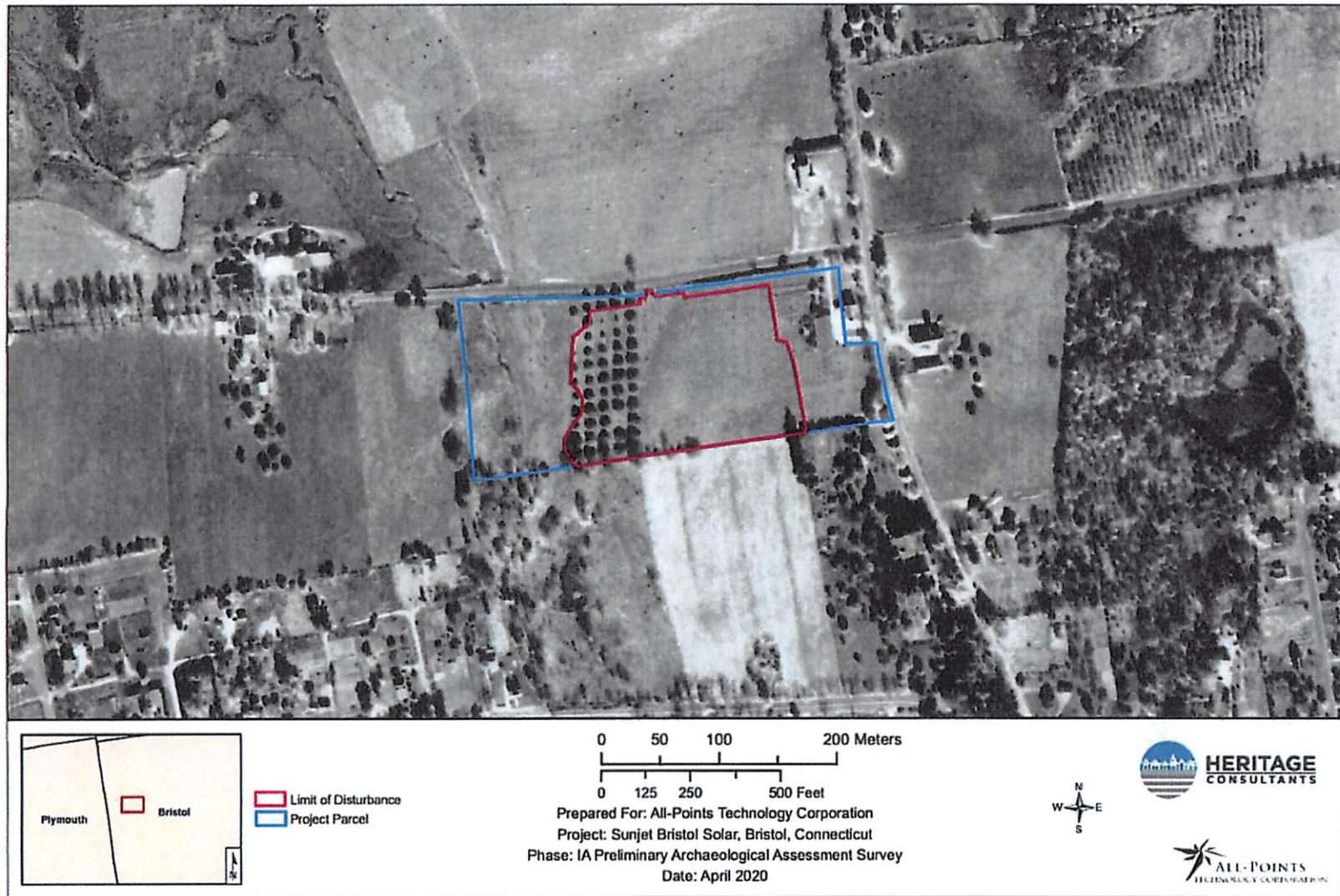


Figure 8. Excerpt from a 1952 aerial photograph showing the location of the project area in Bristol, Connecticut.

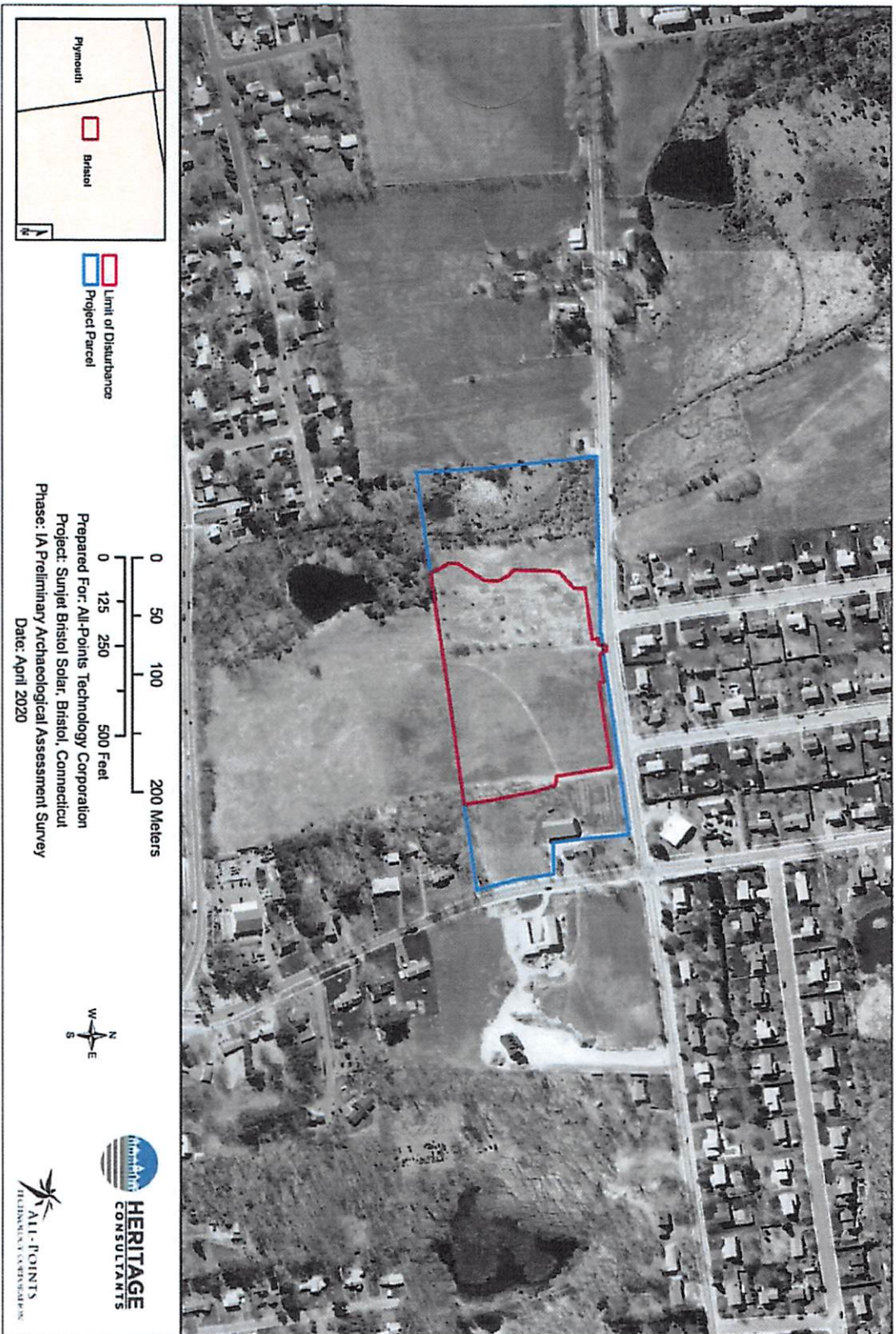


Figure 9. Excerpt from a 2004 aerial photograph showing the location of the project area in Bristol, Connecticut..



Figure 10. Excerpt from a 2016 aerial photograph showing the location of the project area in Bristol, Connecticut.



Figure 11. Excerpt from a 2019 aerial photograph showing the location of the project area in Bristol, Connecticut.