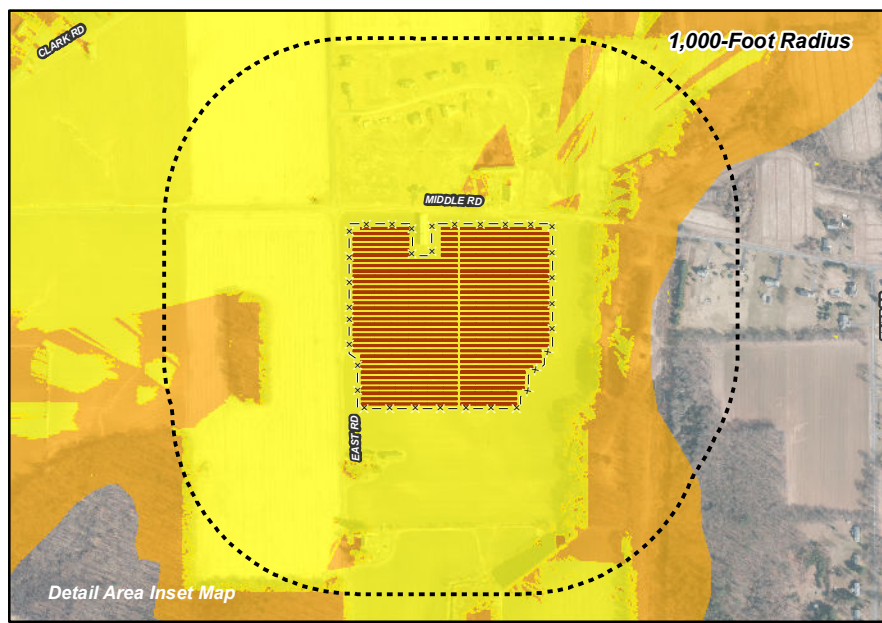
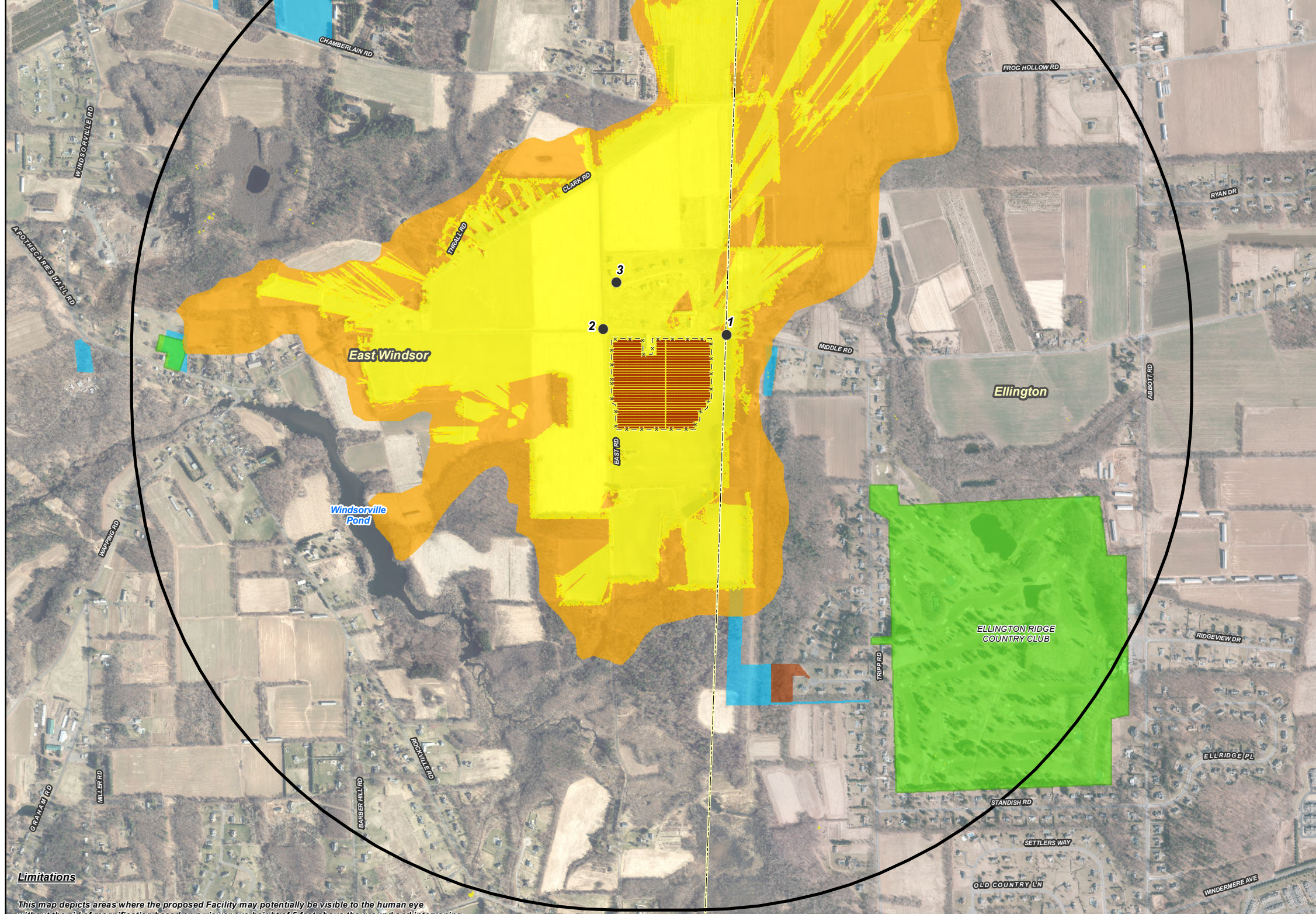




Statewide and Regional Overview Map



Viewshed Analysis Map
 Proposed Solar Facility
 East Windsor Solar One
 341 East Road
 East Windsor, Connecticut

Proposed solar panels to be mounted on approximate 10' AGL support structures. Forest canopy height and topographic contours are derived from LIDAR data. Study area encompasses a 1-mile radius and includes 2,522 acres. Base Map Source: 2019 Aerial Photograph (CTECO) Map Date: June 2020

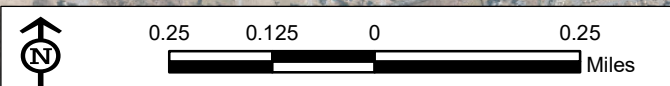
- Legend**
- Site
 - Study Area (1-Mile Radius)
 - Proposed Perimeter Fence
 - Proposed Solar Panel
 - Predicted Year-Round Visibility (369 Acres)
 - Areas of Potential Seasonal Visibility (361 Acres)
 - Municipal Boundary
 - Photographic Locations (Taken on May 12, 2020)
 - Trail
 - Scenic Highway
 - DEEP Boat Launches
 - Municipal and Private Open Space Property
 - State Forest/Park
 - Protected Open Space Property**
 - Federal
 - Land Trust
 - Municipal
 - Private
 - State

Data Sources:
Physical Geography / Background Data
 A digital surface model (DSM) was created from the State of Connecticut 2016 LIDAR LAS data points. The first return LIDAR LAS values, associated with the highest feature in the landscape (such as a treetop or top of building), were used to capture the natural and built features on the Earth's surface beyond the approximate limits of clearing associated with the proposed solar facility. The "bare-earth" return values were utilized to reflect proposed conditions where vegetative clearing associated with the proposed solar facility would occur.
 Municipal Open Space, State Recreation Areas, Trails, County Recreation Areas, and Town Boundary data obtained from CT DEEP. Scenic Roads: CTDOT State Scenic Highways (2015); Municipal Scenic Roads (compiled by APT)

Dedicated Open Space & Recreation Areas
 Connecticut Department of Energy and Environmental Protection (DEEP): DEEP Property (May 2007; Federal Open Space (1997); Municipal and Private Open Space (1997); DEEP Boat Launches (1994)
 Connecticut Forest & Parks Association, Connecticut Walk Books East & West

Other
 CTDOT Scenic Strips (based on Department of Transportation data)
Notes
 **Not all the sources listed above appear on the Viewshed Maps. Only those features within the scale of the graphic are shown.

Limitations
 This map depicts areas where the proposed Facility may potentially be visible to the human eye without the aid of magnification based on a viewer eye-height of 5 feet above the ground and intervening topography, tree canopy and structures. This analysis may not account for all visible locations, as it is based on the combination of computer modeling, incorporating the DSM and 2019 digital aerial photographs only. No in-field verification has been completed. This analysis does not claim to depict the only areas, or all locations, where visibility may occur; it is intended to provide a representation of those areas where the Facility is likely to be seen.





PHOTOGRAPHED ON 5/17/2020

EXISTING

PHOTO

1

LOCATION
MIDDLE ROAD

ORIENTATION

DISTANCE TO SITE

+/- 130 FEET



PROPOSED

PHOTO

1

LOCATION
MIDDLE ROAD

ORIENTATION

DISTANCE TO SITE

+/- 130 FEET



PHOTOGRAPHED ON 5/17/2020

EXISTING

PHOTO

2

LOCATION

MIDDLE ROAD AT EAST ROAD

ORIENTATION

SOUTHEAST

DISTANCE TO SITE

+/- 140 FEET



East Windsor Solar One, LLC



PROPOSED

PHOTO

2

LOCATION

MIDDLE ROAD AT EAST ROAD

ORIENTATION

SOUTHEAST

DISTANCE TO SITE

+/- 140 FEET



PHOTOGRAPHED ON 5/17/2020

EXISTING

PHOTO

3

LOCATION

JESSIE LANE

ORIENTATION

SOUTH

DISTANCE TO SITE

+/- 0.11 MILE



East Windsor Solar One, LLC



PROPOSED

PHOTO

3

LOCATION

JESSIE LANE

ORIENTATION

SOUTH

DISTANCE TO SITE

+/- 0.11 MILE