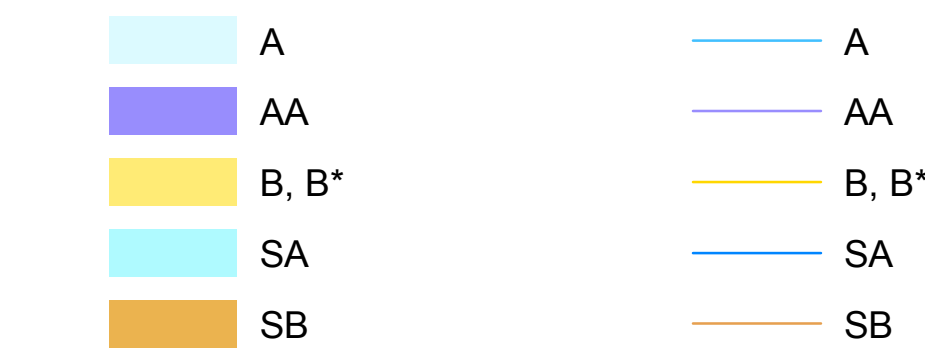


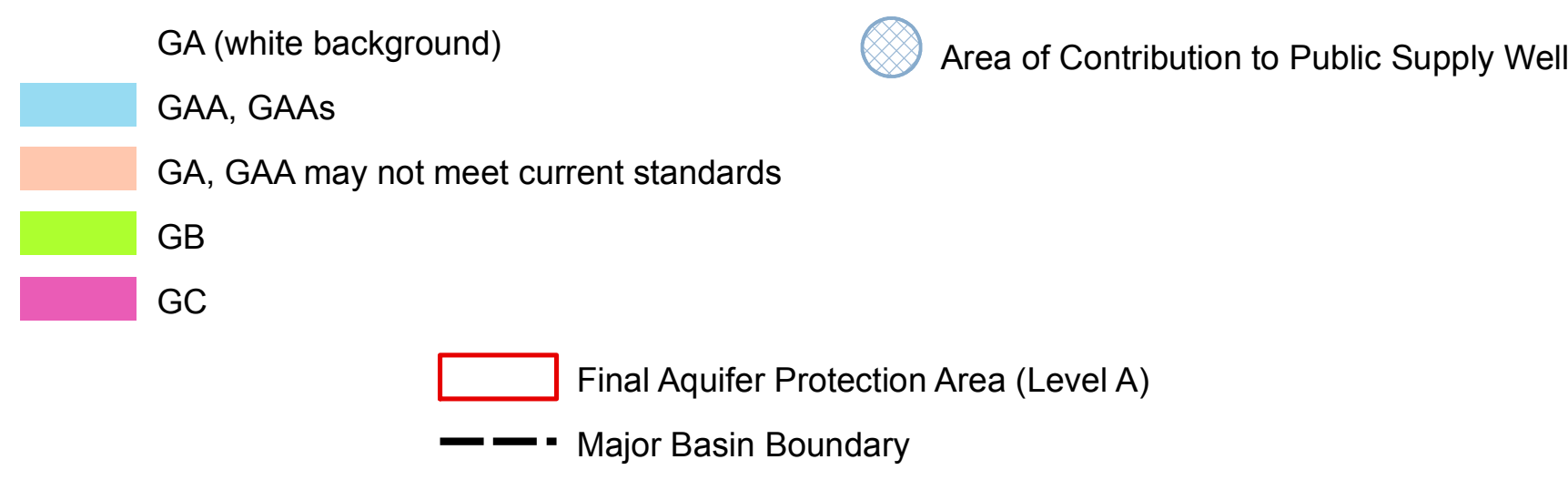
# WATER QUALITY CLASSIFICATIONS NORTH STONINGTON, CT

## SURFACE WATER QUALITY CLASSES



**NOTES:**  
Surface Water Classifications beginning with S refer to Coastal and Marine Surface Water. B\* is a subset of Class B where no direct wastewater discharges are allowed other than those consistent with Class AA, A, and SA surface waters.

## GROUND WATER QUALITY CLASSES



## EXPLANATION

WATER QUALITY CLASSIFICATIONS (WQC) MAPS are one of the elements of the Water Quality Standards (WQS) for the State of Connecticut. The WQS are a part of Connecticut's clean water program and are essential for protecting and improving water quality. The WQS follow the principles of Connecticut's Clean Water Act which is in Chapter 440k of the Connecticut General Statutes. The WQS provide policy guidance in many areas, for example decisions on acceptable discharges to water resources, siting of landfills, remediation or prioritization of municipal sewerage system projects. The first two elements of the WQS are the Standards, which set an overall policy for management of water quality, and the Criteria, which are descriptive and numerical standards that describe the allowable parameters and goals for various water quality classifications. A discussion of these two elements is found in the Water Quality Standards document available on the CT DEEP website. The third element is the Classifications and the Water Quality Classification Maps which show the Classification assigned to each surface and groundwater resource throughout the State. The WQS are adopted using a public participation process. The WQC maps are also adopted using a public participation process but go through hearings separately from the Standards and Criteria hearings. Revision and adoption of the WQC data occurs in accordance with the public participation procedures contained in Section 22a-216 of the Connecticut General Statutes. Ground WQC is subject to Connecticut regulation and changes must be reviewed and adopted. All changes to the Surface WQC require an adoption process which is subject to federal review and approval in addition to CT regulation. The adoption dates for the WQC by major drainage basin are: Housatonic River, Hudson River and Southwest Coastal Basins - March 1999; Connecticut River and South Central Coastal Basins - February 1993; Thames River, Pawcatuck River and Southeast Coastal Basins - December 1986. Surface Water Classifications do not change after the adoption date until the next major revision. Ground Water Classifications may change after the adoption date under specific circumstances. The map may have more than one WQC adoption date because a town may be in more than one major drainage basin.

SURFACE WATERS in Connecticut are divided into freshwater classified as AA, A, B or B\* and saline waters classified as SA or SB. Class AA designated uses are existing or proposed drinking water supplies; habitat for fish and other aquatic life and wildlife; recreation; and water supply for industry and agriculture. Class A designated uses are habitat for fish and other aquatic life and wildlife; potential drinking water supplies; recreation; navigation; and water supply for industry and agriculture. Class SA designated uses are habitat for marine fish, other aquatic life and wildlife; shellfish harvesting for direct human consumption; recreation; industrial water supply, and navigation. Class B designated uses are habitat for fish and aquatic life and wildlife; recreation; navigation and industrial and agricultural water supply. Class B\* applicable to Candlewood Lake, is a subset of Class B and is identical in all ways to the designated uses, criteria and standards for Class B waters except for the restriction on direct discharges. Class SB designated uses are habitat for marine fish and aquatic life and wildlife; commercial shellfish harvesting; recreation; industrial water supply; and navigation.

Surface waters which are not specifically classified shall be considered as Class A or Class AA. Surface waters in GA ground water areas are assumed Class A or Class SA unless otherwise indicated. Surface waters in GAA ground water areas are assumed Class AA unless otherwise indicated.

On the WQC map a surface water quality goal of A is represented by blue colored water bodies. Surface water quality goal of AA is represented by purple colored water bodies. Surface water quality goal of B is represented by gold colored water bodies.

GROUND WATERS in Connecticut are classified as GAA, GA, GB and GC. Class GAA designated uses are existing or potential public supply of water suitable for drinking without treatment and baseflow for hydraulically-connected surface water bodies. The Class GAAs is a subclass of GAA for ground water that is tributary to a public water supply reservoir. The area of contribution to a public water supply well is represented by a 500-foot radius around the well and is assumed to be Class GAA unless otherwise classified. Class GA designated uses are existing private and potential public or private supplies of water suitable for drinking without treatment and baseflow for hydraulically-connected surface water bodies. All ground waters not specifically classified are considered as Class GA. Class GB designated uses are industrial process water and cooling waters and baseflow for hydraulically-connected water bodies and is presumed not suitable for human consumption without treatment. Class GC designated uses are assimilation of discharges authorized by the Commissioner pursuant to Section 22a-430 of the General Statutes.

On the WQC map GA is represented by white colored land areas. Class GAA and class GAAs are represented by blue colored land areas. The area of contribution to a public water supply well is shown by a blue cross-hatch overprint. A notation of GAA followed by a state abbreviation indicates a watershed that contributes to the public water supply for a state other than Connecticut. Class GA or Class GAA areas that currently may not be meeting the GA or GAA standards are represented on the WQC maps by tan colored land areas. Class GB is represented by green colored land areas. Class GC is represented by magenta colored land areas.

FINAL AQUIFER PROTECTION AREAS (Level A) are included on the WQC maps for informational purposes. These areas are anticipated to be reclassified GAA during the next major basin updates, subject to public participation. The Aquifer Protection Program helps protect Connecticut's public drinking water resources by delineating aquifer protection areas (also called wellhead protection areas) for public supply wells and establishing land use regulations within these areas. These areas represent the land area contributing ground water to active public water supply wells or well fields that serve more than 1000 people and are set in sand and gravel aquifers (stratified drift deposits).

## DATA SOURCES

WATER QUALITY CLASSIFICATIONS DATA - Water quality classifications shown on this map are based on information from the following digital spatial datasets that are typically shown together - Ground Water Quality Classifications Poly, Surface Water Quality Classifications Line, and Surface Water Quality Classifications Poly. The map legend above reflects the content of these three data sources. These WQC data were initially compiled on 1:24,000-scale 7.5 minute USGS topographic quadrangle maps and later digitized at 1:24,000 scale. For example, the Surface Water Quality Classifications Line and Surface Water Quality Classifications Poly digital data assigns surface water quality classifications to water bodies such as rivers, streams, reservoirs, lakes, ponds and covers found in 1:24,000-scale hydrography data available from CT DEEP. The hydrography map may not include all the waterbodies in Connecticut. The Ground Water Quality Classifications Poly data assigns ground water quality classifications, at 1:24,000 scale, to the remaining land areas in Connecticut.

AQUIFER PROTECTION AREA DATA - Aquifer Protection Areas shown on this map are from the Aquifer Protection Area digital dataset which contains polygon data intended to be used at 1:24,000 scale. The dataset contains regulated areas classified as Level A Aquifer Protection Area (Final) and Level B Aquifer Protection Area (Preliminary). The Level B areas are not shown on the WQC maps. The data was collected from 1991 to the present and is actively updated as Final area mapping replaces earlier Preliminary areas. The Aquifer Protection Areas are delineated by

the individual water companies owning the well fields and submitted to the CT DEEP for approval. Preliminary mapping provides a general estimate of the area contributing ground water to the well field. Final mapping is based on extensive site-specific, detailed modeling of the ground water flow system. CT DEEP may adjust Final area boundaries to be consistent with 1:24,000 scale topography and base map data where appropriate during the approval process.

MAJOR DRAINAGE BASIN DATA - Major drainage basins shown on this map are from Major Basin Line data developed by CT DEEP and intended to be used at 1:24,000 scale.

BASE MAP DATA - Based on data originally from 1:24,000-scale USGS 7.5 minute topographic quadrangle maps published between 1969 and 1992. It includes political boundaries, railroads, airports, hydrography, geographic names and geographic places. Streets and street names are from Tele Atlas' copyrighted data. Base map information is neither current nor complete.

RELATED INFORMATION  
This map is intended to be printed at its original dimensions in order to maintain the 1:24,000 scale (1 inch = 2000 feet).  
WATER QUALITY STANDARDS - Go to the CT DEEP website for a summary and the full text of the "Water Quality Standards" and for other information on water quality.  
AQUIFER PROTECTION AREAS - Go to the CT DEEP website for more information.

### ADOPTED DATES

Water Quality Standards  
February 25, 2011

Thames River, Pawcatuck River and Southeast Coastal Basins: December 1986

Connecticut River and South Central Coastal Basins:  
February 1993

Housatonic River, Hudson River and Southwest Coastal Basins: March 1999

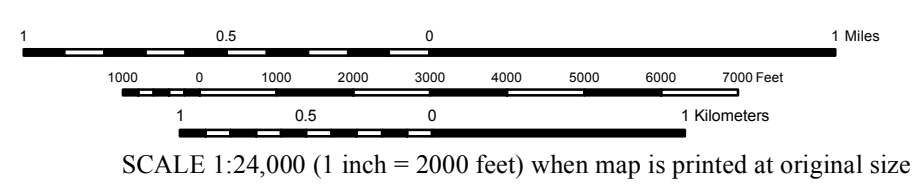
### MAJOR BASINS

- 1 Pawcatuck
- 2 Southeast Coast
- 3 Thames
- 4 Connecticut
- 5 South Central Coast
- 6 Housatonic
- 7 Southeast Coast
- 8 Hudson

### MAP LOCATION



Date Plane Coordinate System of 1983, Zone 20N  
Lambert Conformal Conic Projection  
North American Datum of 1983



SCALE 1:24,000 (1 inch = 2000 feet) when map is printed at original size

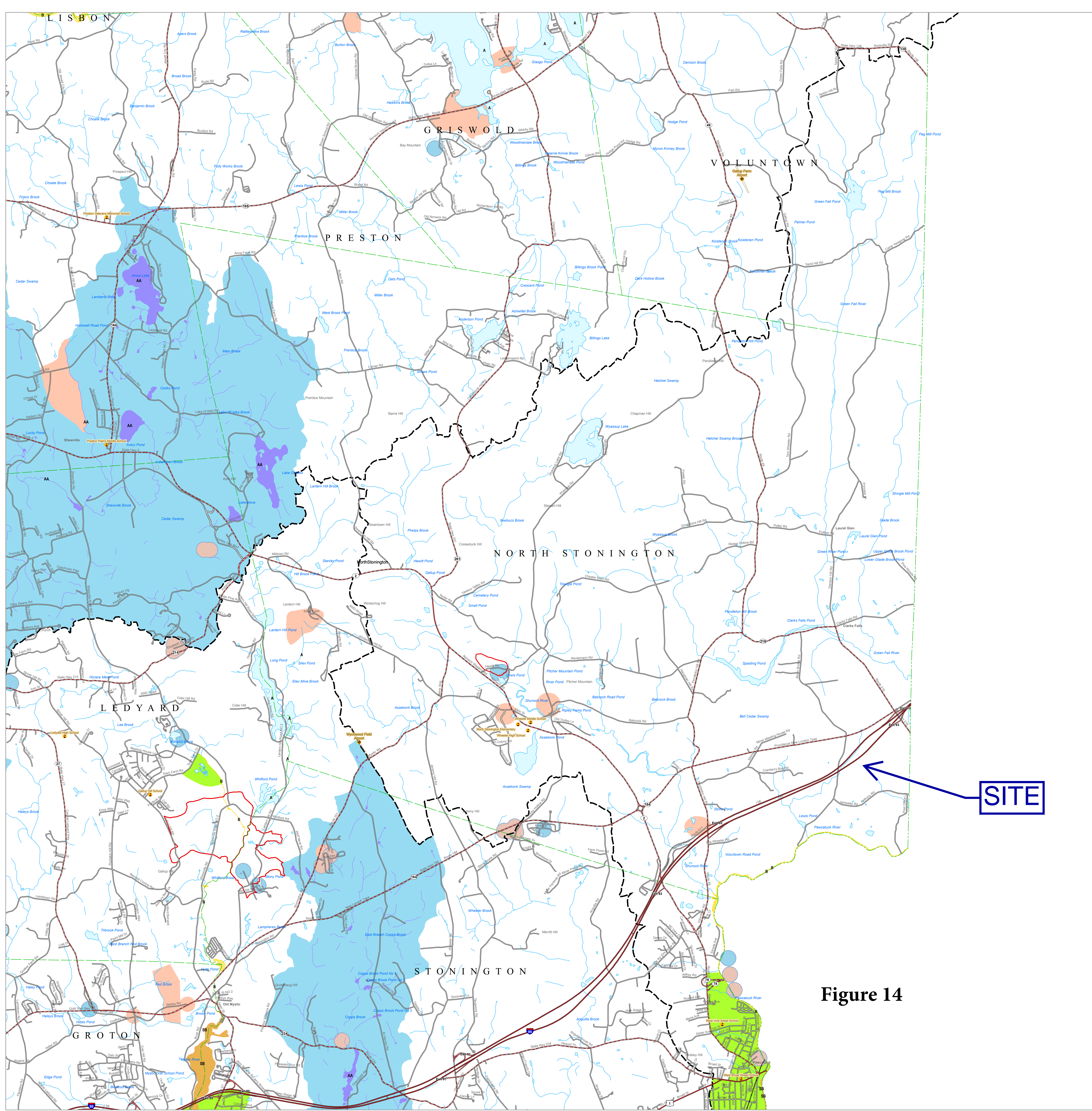


Figure 14