

United States Department of the Interior  
National Park ServiceRECEIVED  
AUG 13 1990National Register of Historic Places  
Registration FormNATIONAL  
REGISTER

This form is for use in nominating or requesting determinations of eligibility for individual properties or districts. See instructions in Guidelines for Completing National Register Forms (National Register Bulletin 16). Complete each item by marking "x" in the appropriate box or by entering the requested information. If an item does not apply to the property being documented, enter "N/A" for "not applicable." For functions, styles, materials, and areas of significance, enter only the categories and subcategories listed in the instructions. For additional space use continuation sheets (Form 10-900a). Type all entries.

1. Name of Property	Seaside Village Historic District (use for publication)		
historic name	Seaside Village		
other names/site number	Crane Development		
Wartime Emergency Housing In Bridgeport, 1916 - 1920 (Multiple Property Form)			
2. Location			
street & number	See Continuation Sheet	<input type="checkbox"/> not for publication	N/A
city, town	Bridgeport	<input type="checkbox"/> vicinity	
state	Connecticut	code CT	county Fairfield
		code 001	zip code 06604

3. Classification	
Ownership of Property	Category of Property
<input checked="" type="checkbox"/> private	<input type="checkbox"/> building(s)
<input type="checkbox"/> public-local	<input checked="" type="checkbox"/> district
<input type="checkbox"/> public-State	<input type="checkbox"/> site
<input type="checkbox"/> public-Federal	<input type="checkbox"/> structure
	<input type="checkbox"/> object
Number of Resources within Property	
Contributing	Noncontributing
58	0 buildings
	sites
	structures
	objects
58	0 Total
Name of related multiple property listing:	
Wartime Emergency Housing In Bridgeport	
Number of contributing resources previously listed in the National Register 0	

4. State/Federal Agency Certification	
As the designated authority under the National Historic Preservation Act of 1966, as amended, I hereby certify that this <input checked="" type="checkbox"/> nomination <input type="checkbox"/> request for determination of eligibility meets the documentation standards for registering properties in the National Register of Historic Places and meets the procedural and professional requirements set forth in 36 CFR Part 60. In my opinion, the property <input checked="" type="checkbox"/> meets <input type="checkbox"/> does not meet the National Register criteria. <input type="checkbox"/> See continuation sheet.	
Signature of certifying official	John W. Shanahan, State Historic Preservation Officer
Date	8/9/90
State or Federal agency and bureau	
In my opinion, the property <input type="checkbox"/> meets <input type="checkbox"/> does not meet the National Register criteria. <input type="checkbox"/> See continuation sheet.	
Signature of commenting or other official	Date
State or Federal agency and bureau	

5. National Park Service Certification	
I, hereby, certify that this property is:	
<input checked="" type="checkbox"/> entered in the National Register.	
<input type="checkbox"/> See continuation sheet.	
<input type="checkbox"/> determined eligible for the National Register. <input type="checkbox"/> See continuation sheet.	
<input type="checkbox"/> determined not eligible for the National Register.	
<input type="checkbox"/> removed from the National Register.	
<input type="checkbox"/> other, (explain:)	
Signature of the Keeper	
Date of Action	

6. Function or Use	
Historic Functions (enter categories from instructions)	Current Functions (enter categories from instructions)
Domestic/multiple dwelling	Domestic/multiple dwelling
7. Description	
Architectural Classification (enter categories from instructions)	Materials (enter categories from instructions)
Late 19th and 20th Century Revivals:	foundation Granite
Colonial Revival	walls Brick
	roof Roll asphalt
	other

Describe present and historic physical appearance.

Located on the east side of Iranistan Avenue between South Street and Burnham Street and encompassing Albert Square, Alsace Street, Cole Street, Flanders Street, Forest Court, Forest Street, and Sims Street, Seaside Village forms a tight enclave in a mixed-use residential/commercial area in the southwest section of Bridgeport in close proximity to Bridgeport University and Long Island Sound.

Seaside Village is one of the housing complexes constructed by the Bridgeport Housing Company during World War I. Roughly two-thirds of the original project was built. It consists of 58 one-and-one-half and two-and-one-half-story structures (Photographs 1 through 5) containing some 200 single-family units arranged in rows and clusters that were designed and placed with reference to a carefully prepared, irregular site plan featuring slightly curved streets, cul-de-sacs, a small green or square, and spacious interior courts, yards, and gardens. The buildings are all of brick laid in an English bond pattern and are topped by slate-covered gable roofs. Small gable dormers surfaced with clapboards punctuate some of the roofs. They feature oriel windows, and some of the 6/6 windows topped by brick arches articulated by double header courses are flanked by wood shutters. The various classically inspired door surrounds range from full entablatures to open-bed pediments encompassing blind fanlights. The predominant order used is Tuscan Doric. While the steep pitches of the roofs represent an attempt to adapt an early eighteenth-century southern form to a northern climate, the careful massing of the buildings, their Colonial Revival design vocabulary, and studied placement along picturesque, tree-lined streets all consciously recall Old New England villages, where outbuildings and extensions have been added over time to the original houses.

Alterations to this complex are slight and are comprised of replacement jealousy sash in the bay windows and an occasional aluminum storm sash over existing wood sash. Some of the houses have small metal awnings that have obscured the entry detail but have not removed or destroyed any original detail.

☒ See continuation sheet

## SEASIDE VILLAGE'S ROLE IN U.S. ARCHITECTURE

"Buildings at Seaside Village in Bridgeport, Connecticut are modulated, articulated, and set about in such a way that one can almost imagine oneself walking through a European village instead of being in a public housing project designed for American shipbuilders during World War One. The simplicity of the neighborhood plan for Seaside is evident from a casual glance at its layout, but a closer look reveals how the individual buildings have been artfully arranged with respect to the street, to open spaces, and to one another to produce spatial relationships of lasting interest"<sup>97</sup>

**Randall Arendt, American Planning Association, 1999**

"The curvilinear layouts recommended by FHA in the 1930s set the standards for the design of post World War II subdivisions. They evolved from Garden City suburbs such as Seaside Village..."<sup>98</sup>

The "English Garden Style," use of organic curvilinear designs seen in Seaside Village came into widespread use in the post-World War II single family subdivisions which favored cul-de-sacs and curving streets. Cul-de-sacs were used to create a sense of enclosure and privacy. The curving streets created visual interest. This is still a common sight in the suburbs, but remains unusual in an urban environment where most developments are set out in a grid pattern.<sup>99</sup>

**David L. Ames & Linda Flint McClelland, National Register of Historic Places, 2002**

Bridgeport historian, Charles Brilvitch has stated that Seaside Village is the "first planned garden community in the United States" predating Sunnyside Gardens in Queens<sup>100</sup> He also said the developments in Bridgeport were the first attempts by the federal government to build "English Garden City" housing. "They were a model of what could be done."<sup>101</sup>

**Charles Brilvitch, 1997**

"The attention to design and the quality of the craftsmanship and architecture – these all are components that make these housing complexes so distinctive."<sup>102</sup>

**John Herzan, National Register Coordinator for the state Historic Commission, 1990**

---

<sup>97</sup> Arendt, Randall. *Crossroads, Hamlets, Village, Town: Design Characteristics of Traditional Neighborhoods - Old and New*. American Planning Association, Planning Advisory Service, Report Number 487/488, 1999, pp. 32–33.

<sup>98</sup> Ames, 2002.

<sup>99</sup> Ames, 2002.

<sup>100</sup> Branch, 1993.

<sup>101</sup> "Vintage Homes Admired," *Connecticut Post*, August 24, 1997

<sup>102</sup> "WWI-era Housing, 1990.

United States Department of the Interior  
National Park ServiceMultiple Property Form  
Wartime Emergency Housing In Bridgeport,  
1916 - 1920National Register of Historic Places  
Continuation SheetSection number 2 Page 1Seaside Village Inventory of Structures

Format:

Contributing (C) or Noncontributing (NC), Address

(C) 3 Albert Square  
(C) 15 - 25 Albert Square  
(C) 29 - 31 Albert Square  
(C) 100 Alsace St.  
(C) 107 - 129 Alsace St.  
(C) 120 Alsace St.  
(C) 128 - 152 Alsace St.  
(C) 139 - 163 Alsace St.  
(C) 168 - 178 Alsace St.  
(C) 169 - 181 Alsace St.  
(C) 200 - 208 Alsace St.  
(C) 201 - 207 Alsace St.  
(C) 209 - 217 Alsace St.  
(C) 216 - 226 Alsace St.  
(C) 219 - 225 Alsace St.  
(C) 15 - 25 Burnham St.  
(C) 16 - 18 Burnham St.  
(C) 26 Burnham St.  
(C) 32 - 42 Burnham St.  
(C) 45 Burnham St.  
(C) 46 Burnham St.  
(C) 54 - 66 Burnham St.  
(C) 57 - 73 Burnham St.  
(C) 93 - 127 Burnham St.  
(C) 122 - 132 Burnham St.  
27 Center St.  
(C) 11 - 21 Cole St.  
(C) 16 Cole St.  
(C) 20 - 50 Cole St.  
(C) 29 - 45 Cole St.  
(C) 55 - 71 Cole St.  
(C) 60 - 82 Cole St.  
(C) 87 Cole St.  
(C) 90 Cole St.  
(C) 98 Flanders St.  
(C) 114 - 126 Flanders St.  
(C) 132 - 138 Flanders St.  
(C) 158 - 174 Flanders St.

United States Department of the Interior  
National Park ServiceMultiple Property Form  
Wartime Emergency Housing in Bridgeport,  
1916 - 1920National Register of Historic Places  
Continuation SheetSection number 2 Page 2Seaside Village Continued

- (C) 165 - 177 Flanders St.
- (C) 194 - 198 Flanders St.
- (C) 195 - 203 Flanders St.
- (C) 4 Forest Court
- (C) 21 - 37 Forest Court
- (C) 24 - 26 Forest Court
- (C) 76 - 90 Forest St.
- (C) 77 - 99 Forest St.
- (C) 239 - 241 Iranistan Avenue
- (C) 263 - 271 Iranistan Avenue
- (C) 285 - 291 Iranistan Avenue
- (C) 321 - 329 Iranistan Avenue
- (C) 337 - 347 Iranistan Avenue
- (C) 367 Iranistan Avenue
- (C) 373 - 387 Iranistan Avenue
- (C) 391 Iranistan Avenue
- (C) 419 - 439 Iranistan Avenue
- (C) 3 - 29 Little St.
- (C) 14 - 24 Little St.
- (C) 2 Sims St.
- (C) 10 - 26 Sims St.
- (C) 17 Sims St.
- (C) 25 - 43 Sims St.
- (C) 51 - 75 Sims St.
- (C) 54 - 64 Sims St.
- (C) 66 - 76 Sims St.
- (C) 78 - 82 Sims St.
- (C) 87 - 103 Sims St.
- (C) 90 - 102 Sims St.
- (C) 104 - 114 Sims St.
- (C) 116 - 124 Sims St.
- (C) 117 Sims St.
- (C) 901 - 915 South St.

United States Department of the Interior  
National Park ServiceMultiple Property Form  
Wartime Emergency Housing In Bridgeport,  
1916 - 1920National Register of Historic Places  
Continuation SheetSection number 2 Page 3Seaside Village Continued

This complex has more than 50 properties.

Note that although the above list contains 70 entries, several buildings have more than one address, reducing the individual building tally to 58 contributing buildings.

Number 3 Albert Square, 100 Alsace Street and 93-127 Burnham Street represent one building

Numbers 120 Alsace Street and 122-132 Burnham Street represent one building

Numbers 45 Burnham Street and 77-19 Forest Street represent one building.

Numbers 57-73 Burnham Street and 98 Flanders Street represent one building.

Numbers 16 Cole Street and 367 Flanders Street represent one building.

Numbers 87 Cole Street and 132 -138 Flanders Street represent one building.

Numbers 90 Cole Street, 158-174 Flanders Street and 117 Sims Street represent one building

Numbers 4 Forest Court and 263-271 Iranistan Avenue represent one building.

Numbers 391 Iranistan Avenue and 17 Sims Street represent one building.

Numbers 419-439 Iranistan Avenue and 2 Sims Street represent one building

## National Register of Historic Places Continuation Sheet

Section number 2 Page 4

---

Seaside Village Historic District is owned by The Bridgeport Mutual Management Corporation  
240 Fairfield Avenue  
Suite 309  
Bridgeport, CT 06604

United States Department of the Interior  
National Park ServiceMultiple Property Form  
Wartime Emergency Housing In Bridgeport,  
1916 - 1920National Register of Historic Places  
Continuation SheetSection number 7 Page 1Seaside Village Inventory of Structures

## Format:

Contributing (C) or Noncontributing (NC), Address, Date, Style,  
Architect/Builder

(C) 3 Albert Square, 1918, Colonial Revival, Sturgis; Skinner & Walker; Shurtleff  
(C) 15 - 25 Albert Square, 1918, Colonial Revival, Sturgis; Skinner & Walker; Shurtleff  
(C) 29 - 31 Albert Square, 1918, Colonial Revival, Sturgis; Skinner & Walker; Shurtleff  
(C) 100 Alsace St., 1918, Colonial Revival, Sturgis; Skinner & Walker; Shurtleff  
(C) 107 - 129 Alsace St., 1918, Colonial Revival, Sturgis; Skinner & Walker; Shurtleff  
(C) 120 Alsace St., 1918, Colonial Revival, Sturgis; Skinner & Walker; Shurtleff  
(C) 128 - 152 Alsace St., 1918, Colonial Revival, Sturgis; Skinner & Walker; Shurtleff  
(C) 139 - 163 Alsace St., 1918, Colonial Revival, Sturgis; Skinner & Walker; Shurtleff  
(C) 168 - 178 Alsace St., 1918, Colonial Revival, Sturgis; Skinner & Walker; Shurtleff  
(C) 169 - 181 Alsace St., 1918, Colonial Revival, Sturgis; Skinner & Walker; Shurtleff  
(C) 200 - 208 Alsace St., 1918, Colonial Revival, Sturgis; Skinner & Walker; Shurtleff  
(C) 201 - 207 Alsace St., 1918, Colonial Revival, Sturgis; Skinner & Walker; Shurtleff  
(C) 209 - 217 Alsace St., 1918, Colonial Revival, Sturgis; Skinner & Walker; Shurtleff  
(C) 216 - 226 Alsace St., 1918, Colonial Revival, Sturgis; Skinner & Walker; Shurtleff  
(C) 219 - 225 Alsace St., 1918, Colonial Revival, Sturgis; Skinner & Walker; Shurtleff  
(C) 15 - 25 Burnham St., 1918, Colonial Revival, Sturgis; Skinner & Walker; Shurtleff  
(C) 16 - 18 Burnham St., 1918, Colonial Revival, Sturgis; Skinner & Walker; Shurtleff  
(C) 26 Burnham St., 1918, Colonial Revival, Sturgis; Skinner & Walker; Shurtleff  
(C) 32 - 42 Burnham St., 1918, Colonial Revival, Sturgis; Skinner & Walker; Shurtleff  
(C) 45 Burnham St., 1918, Colonial Revival, Sturgis; Skinner & Walker; Shurtleff  
(C) 46 Burnham St., 1918, Colonial Revival, Sturgis; Skinner & Walker; Shurtleff  
(C) 54 - 66 Burnham St., 1918, Colonial Revival, Sturgis; Skinner & Walker; Shurtleff  
(C) 57 - 73 Burnham St., 1918, Colonial Revival, Sturgis; Skinner & Walker; Shurtleff  
(C) 93 - 127 Burnham St., 1918, Colonial Revival, Sturgis; Skinner & Walker; Shurtleff  
(C) 122 - 132 Burnham St., 1918, Colonial Revival, Sturgis; Skinner & Walker; Shurtleff  
(C) 11 - 21 Cole St., 1918, Colonial Revival, Sturgis; Skinner & Walker; Shurtleff  
(C) 16 Cole St., 1918, Colonial Revival, Sturgis; Skinner & Walker; Shurtleff  
(C) 20 - 50 Cole St., 1918, Colonial Revival, Sturgis; Skinner & Walker; Shurtleff  
(C) 29 - 45 Cole St., 1918, Colonial Revival, Sturgis; Skinner & Walker; Shurtleff  
(C) 55 - 71 Cole St., 1918, Colonial Revival, Sturgis; Skinner & Walker; Shurtleff  
(C) 60 - 82 Cole St., 1918, Colonial Revival, Sturgis; Skinner & Walker; Shurtleff  
(C) 87 Cole St., 1918, Colonial Revival, Sturgis; Skinner & Walker; Shurtleff  
(C) 90 Cole St., 1918, Colonial Revival, Sturgis; Skinner & Walker; Shurtleff  
(C) 98 Flanders St., 1918, Colonial Revival, Sturgis; Skinner & Walker; Shurtleff  
(C) 114 - 126 Flanders St., 1918, Colonial Revival, Sturgis; Skinner & Walker; Shurtleff  
(C) 132 - 138 Flanders St., 1918, Colonial Revival, Sturgis; Skinner & Walker; Shurtleff  
(C) 158 - 174 Flanders St., 1918, Colonial Revival, Sturgis; Skinner & Walker; Shurtleff



United States Department of the Interior  
National Park ServiceMultiple Property Form  
Wartime Emergency Housing In Bridgeport,  
1916 - 1920National Register of Historic Places  
Continuation SheetSection number 7 Page 2Seaside Village Continued

- (C) 165 - 177 Flanders St., 1918, Colonial Revival, Sturgis; Skinner & Walker; Shurtleff
- (C) 194 - 198 Flanders St., 1918, Colonial Revival, Sturgis; Skinner & Walker; Shurtleff
- (C) 195 - 203 Flanders St., 1918, Colonial Revival, Sturgis; Skinner & Walker; Shurtleff
- (C) 4 Forest Court, 1918, Colonial Revival, Sturgis; Skinner & Walker; Shurtleff
- (C) 21 - 37 Forest Court, 1918, Colonial Revival, Sturgis; Skinner & Walker; Shurtleff
- (C) 24 - 26 Forest Court, 1918, Colonial Revival, Sturgis; Skinner & Walker; Shurtleff
- (C) 76 - 90 Forest St., 1918, Colonial Revival, Sturgis; Skinner & Walker; Shurtleff
- (C) 77 - 99 Forest St., 1918, Colonial Revival, Sturgis; Skinner & Walker; Shurtleff
- (C) 239 - 241 Iranistan Avenue, 1918, Colonial Revival, Sturgis; Skinner & Walker; Shurtleff
- (C) 263 - 271 Iranistan Avenue, 1918, Colonial Revival, Sturgis; Skinner & Walker; Shurtleff
- (C) 285 - 291 Iranistan Avenue, 1918, Colonial Revival, Sturgis; Skinner & Walker; Shurtleff
- (C) 321 - 329 Iranistan Avenue, 1918, Colonial Revival, Sturgis; Skinner & Walker; Shurtleff
- (C) 337 - 347 Iranistan Avenue, 1918, Colonial Revival, Sturgis; Skinner & Walker; Shurtleff
- (C) 367 Iranistan Avenue, 1918, Colonial Revival, Sturgis; Skinner & Walker; Shurtleff
- (C) 373 - 387 Iranistan Avenue, 1918, Colonial Revival, Sturgis; Skinner & Walker; Shurtleff
- (C) 391 Iranistan Avenue, 1918, Colonial Revival, Sturgis; Skinner & Walker; Shurtleff
- (C) 419 - 439 Iranistan Avenue, 1918, Colonial Revival, Sturgis; Skinner & Walker; Shurtleff
- (C) 3 - 29 Little St., 1918, Colonial Revival, Sturgis; Skinner & Walker; Shurtleff
- (C) 14 - 24 Little St., 1918, Colonial Revival, Sturgis; Skinner & Walker; Shurtleff
- (C) 2 Sims St., 1918, Colonial Revival, Sturgis; Skinner & Walker; Shurtleff
- (C) 10 - 26 Sims St., 1918, Colonial Revival, Sturgis; Skinner & Walker; Shurtleff
- (C) 17 Sims St., 1918, Colonial Revival, Sturgis; Skinner & Walker; Shurtleff
- (C) 25 - 43 Sims St., 1918, Colonial Revival, Sturgis; Skinner & Walker; Shurtleff
- (C) 51 - 75 Sims St., 1918, Colonial Revival, Sturgis; Skinner & Walker; Shurtleff
- (C) 54 - 64 Sims St., 1918, Colonial Revival, Sturgis; Skinner & Walker; Shurtleff
- (C) 66 - 76 Sims St., 1918, Colonial Revival, Sturgis; Skinner & Walker; Shurtleff
- (C) 78 - 82 Sims St., 1918, Colonial Revival, Sturgis; Skinner & Walker; Shurtleff
- (C) 87 - 103 Sims St., 1918, Colonial Revival, Sturgis; Skinner & Walker; Shurtleff
- (C) 90 - 102 Sims St., 1918, Colonial Revival, Sturgis; Skinner & Walker; Shurtleff
- (C) 104 - 114 Sims St., 1918, Colonial Revival, Sturgis; Skinner & Walker; Shurtleff
- (C) 116 - 124 Sims St., 1918, Colonial Revival, Sturgis; Skinner & Walker; Shurtleff
- (C) 117 Sims St., 1918, Colonial Revival, Sturgis; Skinner & Walker; Shurtleff
- (C) 901 - 915 South St., 1918, Colonial Revival, Sturgis; Skinner & Walker; Shurtleff

8. Statement of Significance

Certifying official has considered the significance of this property in relation to other properties:

☒ nationally    ☒ statewide    ☐ locally

Applicable National Register Criteria    ☒ A    ☐ B    ☒ C    ☐ D

Criteria Considerations (Exceptions)    ☐ A    ☐ B    ☐ C    ☐ D    ☐ E    ☐ F    ☐ G

Area of Significance (enter categories from Instructions)  
Community Planning and Development  
Architecture  
Social History

Period of Significance  
1916 - 1920

Significant Dates  
1916 - 1920

Cultural Affiliation  
N/A

Significant Person  
N/A

Architect/Builder  
R. Clipston Sturgis and Skinner & Walker  
and Arthur A. Shurtleff

State significance of property, and justify criteria, criteria considerations, and areas and periods of significance noted above.

Seaside Village, known as the Crane Development when built, is significant due to its direct association with the U.S. Housing Corporation's efforts to provide emergency housing for workers manning the factories of the city's war-related industries. It is a good example of the first government-subsidized housing built in Bridgeport. It survives with surprising architectural integrity as the last of four U.S. Housing Corporation projects in Bridgeport. It is a local legacy reflecting the high design quality and first national housing standards achieved through the earliest government-owned housing program in the U. S. It is an excellent example of the collaborative works of R. Clipston Sturgis, Skinner and Walker, and planner Arthur Shurtleff, who created a well-conceived and well-executed model housing complex that maintains a distinct urban character incorporating middle-class housing tastes with English Garden City and American Garden Suburb tenets. As built, the complex presents a strong visual presence and prominence derived from a cohesive site plan, shared materials, and similar scale, proportion and design quality that set it apart from its immediate urban industrial context. It is also significant for its association with Bridgeport's most intense period of growth as housing for workers involved in defense work at the nearby Crane Company.

☐ See continuation sheet

9. Major Bibliographical References

See National Register of Historic Places Multiple Property Documentation Form  
Wartime Emergency Housing In Bridgeport, 1916 - 1920

Previous documentation on file (NPS): N/A

- ☐ preliminary determination of individual listing (36 CFR 67)  
has been requested
- ☐ previously listed in the National Register
- ☐ previously determined eligible by the National Register
- ☐ designated a National Historic Landmark
- ☐ recorded by Historic American Buildings  
Survey # \_\_\_\_\_
- ☐ recorded by Historic American Engineering  
Record # \_\_\_\_\_

☐ See continuation sheet

Primary location of additional data:

- ☐ State historic preservation office
- ☐ Other State agency
- ☐ Federal agency
- ☐ Local government
- ☐ University
- ☒ Other

Specify repository:

Bridgeport City Archives

10. Geographical Data

Acres of property 16.5 Acres

UTM References

A 1 8 6 5 1 0 4 0 4 5 5 8 4 4 0  
Zone Easting Northing

C 1 8 6 5 1 1 0 0 4 5 5 8 7 8 0

B 1 8 6 5 0 9 0 0 4 5 5 8 5 8 0  
Zone Easting Northing

D 1 8 6 5 1 3 0 0 4 5 5 8 5 1 0

☐ See continuation sheet

Verbal Boundary Description

See Figure # 1 (Map)

☒ See continuation sheet

Boundary Justification

☒ See continuation sheet

11. Form Prepared By

name/title Steven Rodford and Nora Lucas Reviewed by John Herzan, National Register  
organization Preservation Computer Services date June 30, 1989 Coordinator  
street & number 306 Beach Avenue telephone (914) 698 5440  
city or town Mamaroneck state New York zip code 10543

United States Department of the Interior  
National Park Service

Multiple Property Form  
Wartime Emergency Housing In Bridgeport,  
1916 - 1920

## National Register of Historic Places Continuation Sheet

Section number 10 Page 1

---

Seaside Village

### UTM References

A 18 651040	4558440
B 18 650900	4558580
C 18 651100	4558780
D 18 651300	4558510

### Boundary Justification

The Seaside Village Historic District is located within a clearly defined neighborhood of Bridgeport outlined by the boundaries of the original land purchased by the United States Housing Corporation in 1918. Distinctive architectural features, including overall building design, slate gable roofs, and brick construction, identify the buildings associated with the United States Housing Corporation development. Landscape features, such as sidewalks, asymmetrical siting, and flowering trees, add cohesiveness to the district. The edges of the district are bordered by nineteenth and twentieth-century residential and commercial construction.

United States Department of the Interior  
National Park Service

Multiple Property Form  
Wartime Emergency Housing In Bridgeport  
1916 - 1920

**National Register of Historic Places  
Continuation Sheet**

Section number        Photos        Page 1

---

Seaside Village Photographs

BP/1/7/89

Bridgeport, Connecticut  
Seaside Village  
#87 - 103 Simes Street, looking south  
Photograph # 1

BP/1/8/89

Bridgeport, Connecticut  
Seaside Village  
Courtyard off Simes Street (#96 - 124), looking west  
Photograph # 2

BP/1/9/89

Bridgeport, Connecticut  
Seaside Village  
114 - 98 Simes Street  
Photograph # 3

BP/1/10/89

Bridgeport, Connecticut  
Seaside Village  
#163 - 181 Alsace Street, looking west  
Photograph # 4

BP/1/11/89

MULTIPLE PROPERTY FORM. WARTIME EMERGENCY HOUSING IN BRIDGEPORT, 1916 - 1920  
Bridgeport, Connecticut  
Seaside Village  
Courtyard at 213 - 223 Alsace Street  
Photograph # 5

United States Department of the Interior  
National Park Service

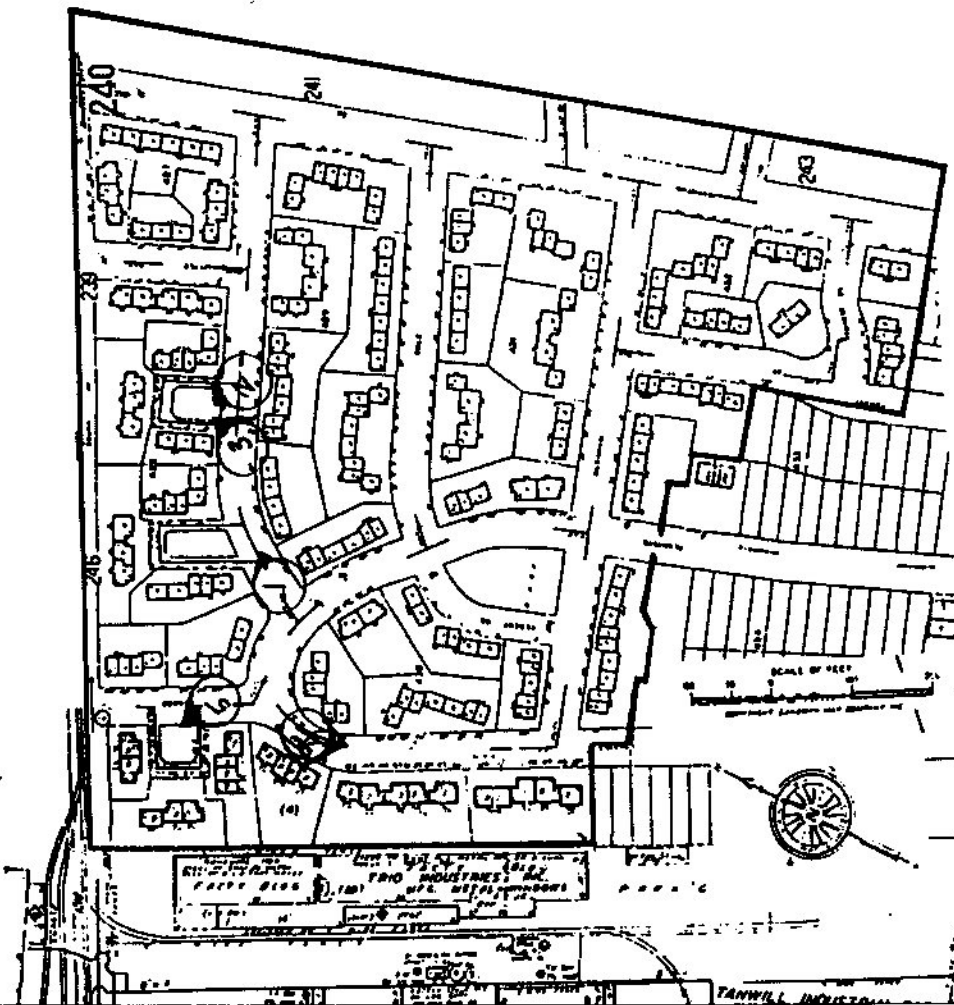
Multiple Property Form  
Wartime Emergency Housing In Bridgeport  
1916 - 1920

# National Register of Historic Places Continuation Sheet

Map & Photo

Section number Key Page 1

Figure #1  
Seaside Village  
Photo Key and Boundary Map



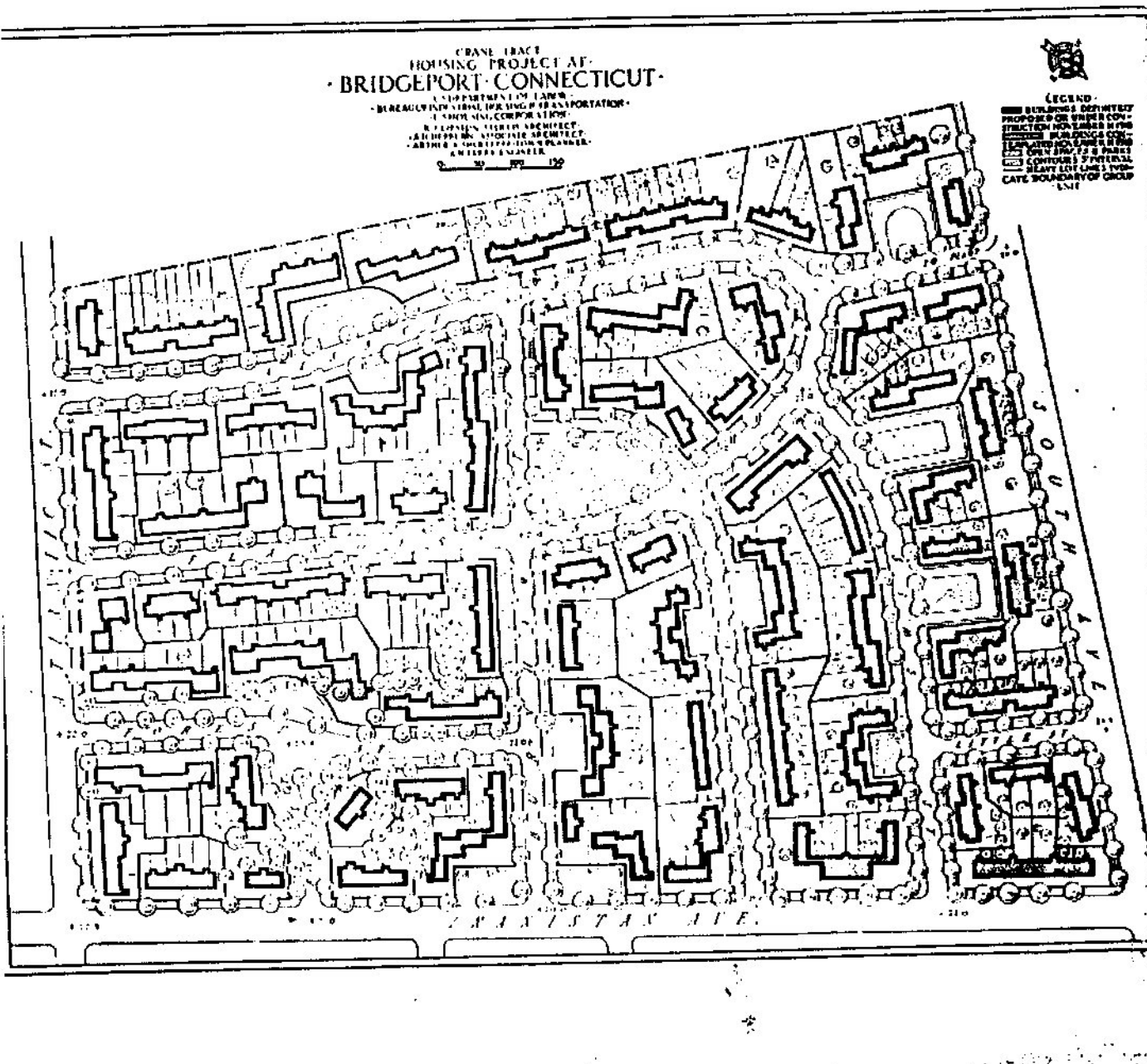
United States Department of the Interior  
National Park Service

Multiple Property Form  
Wartime Emergency Housing In Bridgeport  
1916 - 1920

## National Register of Historic Places Continuation Sheet

Section number Plan Page 1

Seaside Village, Bridgeport, Connecticut  
Report of the United States Housing Corporation p. 125



8/13/80

National Register of Historic Places  
Continuation Sheet

Section number \_\_\_\_\_ Page \_\_\_\_\_

Wartime Emergency Housing in Bridgeport MPS

Fairfield County, CONNECTICUT

		Date Listed
COVER	Substantive Review	9/26/80
1. Black Rock Gardens Historic District	Substantive Review	9/26/80
2. Gateway Village Historic District	Substantive Review	9/26/80
3. Lakeview Village Historic District	Substantive Review	9/26/80
4. Park Apartments	Substantive Review	9/26/80
5. Remington City Historic District	Substantive Review	9/26/80
6. Remington Village Historic District	Substantive Review	9/26/80
7. <del>Seaside Village Historic District</del>	Substantive Review	9/26/80
8. Wilmot Apartments Historic District	Substantive Review	9/26/80



UNITED STATES DEPARTMENT OF THE INTERIOR  
NATIONAL PARK SERVICE

NATIONAL REGISTER OF HISTORIC PLACES  
EVALUATION/RETURN SHEET

REQUESTED ACTION: NOMINATION

PROPERTY Seaside Village Historic District  
NAME:

MULTIPLE Wartime Emergency Housing in Bridgeport MPS  
NAME:

STATE & COUNTY: CONNECTICUT, Fairfield

DATE RECEIVED: 8/13/90 DATE OF PENDING LIST: 8/28/90  
DATE OF 16TH DAY: 9/13/90 DATE OF 45TH DAY: 9/27/90  
DATE OF WEEKLY LIST:

REFERENCE NUMBER: 90001424

NOMINATOR: STATE

REASONS FOR REVIEW:

APPEAL: N DATA PROBLEM: N LANDSCAPE: N LESS THAN 50 YEARS: N  
OTHER: N PDIL: N PERIOD: N PROGRAM UNAPPROVED: N  
REQUEST: N SAMPLE: N SLR DRAFT: N NATIONAL: Y

COMMENT WAIVER: N

☒ ACCEPT ☐ RETURN ☐ REJECT 9/26/90 DATE

ABSTRACT/SUMMARY COMMENTS:

RECOM./CRITERIA Accept

REVIEWER Savage

DISCIPLINE Architectural History

DATE 9-26-90

DOCUMENTATION see attached comments Y/N see attached SLR Y (N)

CLASSIFICATION

\_\_\_count \_\_\_resource type

STATE/FEDERAL AGENCY CERTIFICATION

FUNCTION

\_\_\_historic \_\_\_current

DESCRIPTION

\_\_\_architectural classification  
\_\_\_materials  
\_\_\_descriptive text

SIGNIFICANCE

Period Areas of Significance--Check and justify below

Specific dates Builder/Architect  
Statement of Significance (in one paragraph)

\_\_\_summary paragraph  
\_\_\_completeness  
\_\_\_clarity  
\_\_\_applicable criteria  
\_\_\_justification of areas checked  
\_\_\_relating significance to the resource  
\_\_\_context  
\_\_\_relationship of integrity to significance  
\_\_\_justification of exception  
\_\_\_other

BIBLIOGRAPHY

GEOGRAPHICAL DATA

\_\_\_acreage \_\_\_verbal boundary description  
\_\_\_UTMs \_\_\_boundary justification

ACCOMPANYING DOCUMENTATION/PRESENTATION

\_\_\_sketch maps \_\_\_USGS maps \_\_\_photographs \_\_\_presentation

OTHER COMMENTS

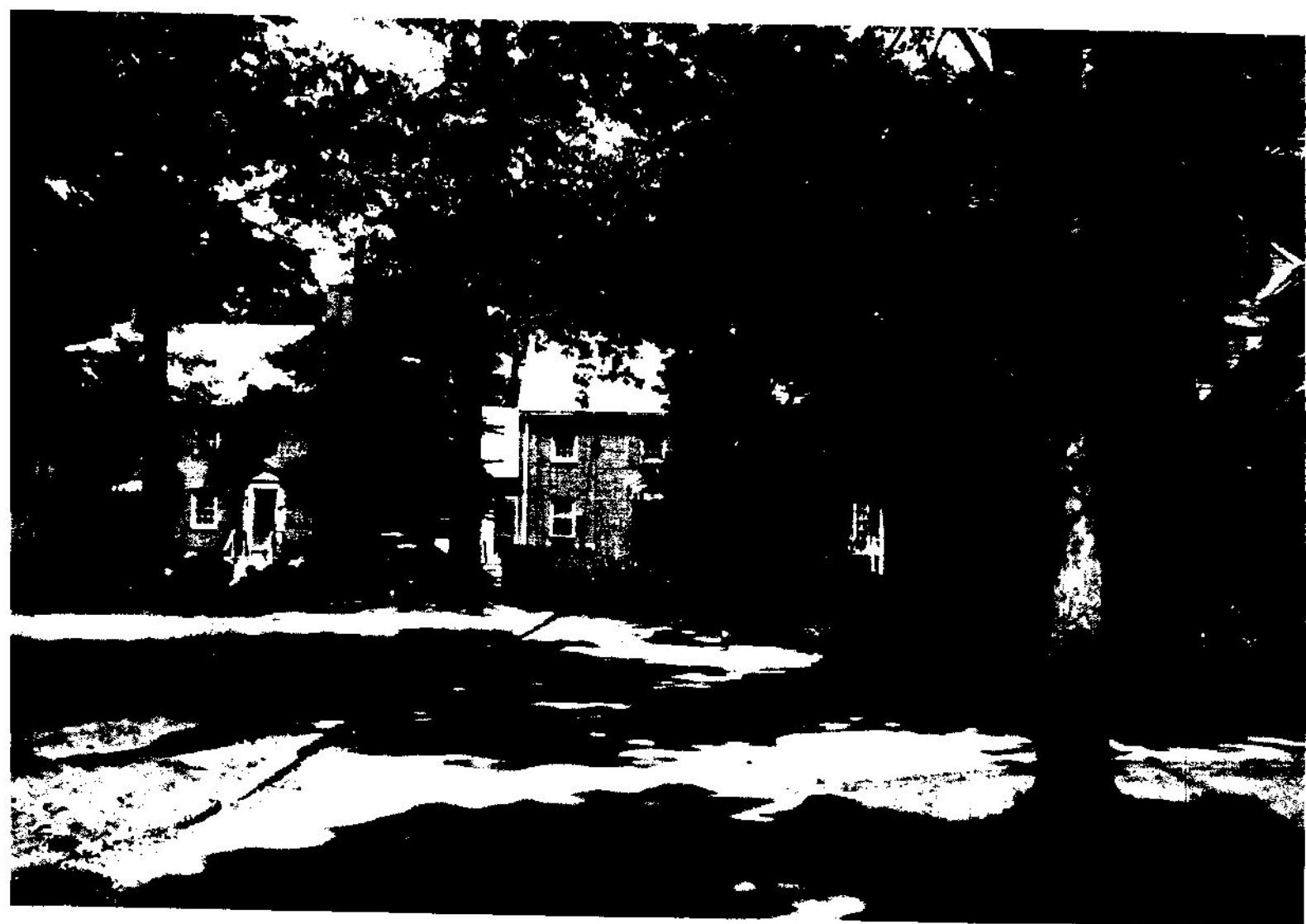
Questions concerning this nomination may be directed to

\_\_\_\_\_ Phone \_\_\_\_\_

Signed \_\_\_\_\_ Date \_\_\_\_\_











Please refer to the map in the  
Multiple Property Cover Sheet  
for this property

Multiple Property Cover Sheet Reference Number: 64500081