



STATE OF CONNECTICUT

CONNECTICUT SITING COUNCIL

Ten Franklin Square, New Britain, CT 06051

Phone: (860) 827-2935 Fax: (860) 827-2950

E-Mail: siting.council@po.state.ct.us

Web Site: www.state.ct.us/csc/index.htm

September 10, 2003

Kenneth C. Baldwin
Robinson & Cole
280 Trumbull Street
Hartford, CT 06103-3597

RE: **EM-VER-164-030821** - Cellco Partnership d/b/a Verizon Wireless notice of intent to modify an existing telecommunications facility located at 482 Pigeon Hill Road, Windsor, Connecticut.

Dear Attorney Baldwin:

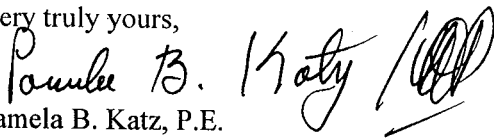
At a public meeting held on September 9, 2003, the Connecticut Siting Council (Council) acknowledged your notice to modify this existing telecommunications facility, pursuant to Section 16-50j-73 of the Regulations of Connecticut State Agencies.

The proposed modifications are to be implemented as specified here and in your notice dated August 21, 2003. The modifications are in compliance with the exception criteria in Section 16-50j-72 (b) of the Regulations of Connecticut State Agencies as changes to an existing facility site that would not increase tower height, extend the boundaries of the tower site, increase noise levels at the tower site boundary by six decibels, and increase the total radio frequencies electromagnetic radiation power density measured at the tower site boundary to or above the standard adopted by the State Department of Environmental Protection pursuant to General Statutes § 22a-162. This facility has also been carefully modeled to ensure that radio frequency emissions are conservatively below State and federal standards applicable to the frequencies now used on this tower.

This decision is under the exclusive jurisdiction of the Council. Any additional change to this facility will require explicit notice to this agency pursuant to Regulations of Connecticut State Agencies Section 16-50j-73. Such notice shall include all relevant information regarding the proposed change with cumulative worst-case modeling of radio frequency exposure at the closest point of uncontrolled access to the tower base, consistent with Federal Communications Commission, Office of Engineering and Technology, Bulletin 65. Any deviation from this format may result in the Council implementing enforcement proceedings pursuant to General Statutes § 16-50u including, without limitation, imposition of expenses resulting from such failure and of civil penalties in an amount not less than one thousand dollars per day for each day of construction or operation in material violation.

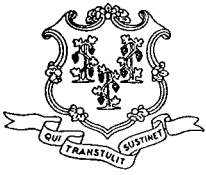
Thank you for your attention and cooperation.

Very truly yours,


Pamela B. Katz, P.E.
Chairman

PBK/laf

c: Honorable Donald Trinks, Mayor, Town of Windsor
Mario Zavarella, Town Planner, Town of Windsor
Stephen J. Humes, Esq., LeBoeuf, Lamb, Greene & MacRae
Michele G. Briggs, Southwestern Bell Mobile Systems



STATE OF CONNECTICUT

CONNECTICUT SITING COUNCIL

Ten Franklin Square, New Britain, CT 06051

Phone: (860) 827-2935 Fax: (860) 827-2950

E-Mail: siting.council@po.state.ct.us

Web Site: www.state.ct.us/csc/index.htm

August 22, 2003

Honorable Donald Trinks
Mayor
Town of Windsor
Town Hall
275 Broad Street
Windsor, CT 06095-0472

RE: **EM-VER-164-030821** - Cellco Partnership d/b/a Verizon Wireless notice of intent to modify an existing telecommunications facility located at 482 Pigeon Hill Road, Windsor, Connecticut.

Dear Mayor Trinks:

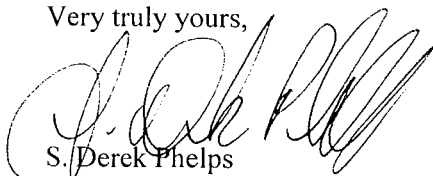
The Connecticut Siting Council (Council) received this request to modify an existing telecommunications facility, pursuant to Regulations of Connecticut State Agencies Section 16-50j-72.

The Council will consider this item at the next meeting scheduled for September 9, 2003, at 1:30 p.m. in Hearing Room One, Ten Franklin Square, New Britain, Connecticut.

Please call me or inform the Council if you have any questions or comments regarding this proposal.

Thank you for your cooperation and consideration.

Very truly yours,



S. Derek Phelps
Executive Director

SDP/ld

Enclosure: Notice of Intent

c: Mario Zavarella, Town Planner, Town of Windsor

RECEIVED
AUG 21 2003

280 Trumbull Street
Hartford, CT 06103-3597
Main (860) 275-8200
Fax (860) 275-8299
kbaldwin@rc.com
Direct (860) 275-8345

CONNECTICUT
SITING COUNCIL

August 21, 2003

Via Hand Delivery

EM-VER-164-030821

S. Derek Phelps
Executive Director
Connecticut Siting Council
10 Franklin Square
New Britain, CT 06051

Re: **Notice of Exempt Modification**
482 Pigeon Hill Road
Windsor, Connecticut

Dear Mr. Phelps:

Cellco Partnership d/b/a Verizon Wireless' ("Cellco") intends to modify its existing wireless telecommunications facility compound at 482 Pigeon Hill Road in Windsor, Connecticut. Please accept this letter as notification pursuant to R.C.S.A. § 16-50j-73, for construction that constitutes an exempt modification pursuant to R.C.S.A. § 16-50j-72(b)(2). In accordance with R.C.S.A. § 16-50j-73, a copy of this letter is being sent to the Windsor Town Manager, R. Leon Churchill, Jr.

The existing telecommunications facility at 482 Pigeon Hill Road is owned by Cellco and is located adjacent to its existing Windsor Connecticut Mobile Telephone Switching Office ("MTSO"). Cellco intends to install, on a temporary basis, a 6000 gallon Convault fuel tank and diesel generator within the existing facility compound. The generator and associated fuel tank will be used to provide back-up power to the MTSO. The generator and fuel tank will eventually be relocated into the MTSO building once it is expanded. Cellco hopes to complete the MTSO expansion by 2005. Project plans and specifications for the tank and generator are attached.

The planned modifications to the Pigeon Hill Road facility fall squarely within those activities explicitly provided for in R.C.S.A. § 16-50j-72(b)(2).



Law Offices

BOSTON

HARTFORD

NEW LONDON

STAMFORD

GREENWICH

NEW YORK

www.rc.com

HART1-1119011-1

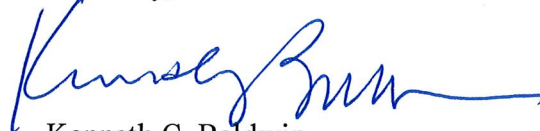
ROBINSON & COLE^{LLP}

S. Derek Phelps
August 21, 2003
Page 2

1. The proposed modification will not increase the overall height of the existing tower. In fact, no changes are proposed to the existing tower.
2. The addition of the generator and fuel tank does not require an extension of facility boundaries.
3. The proposed modification will not increase the noise levels at the facility by six decibels or more. The generator will be equipped with a noise attenuation cover.
4. The installation of a generator and fuel tank will not effect radio frequency (RF) power density levels at the site, in any way.

For the foregoing reasons, Cellco respectfully submits that the proposed modification of its telecommunications facility at Pigeon Hill Road constitutes an exempt modification under R.C.S.A. § 16-50j-72(b)(2).

Sincerely,



Kenneth C. Baldwin

KCB:cag

Attachments

cc: R. Leon Churchill, Jr., Town Manager
Sandy M. Carter

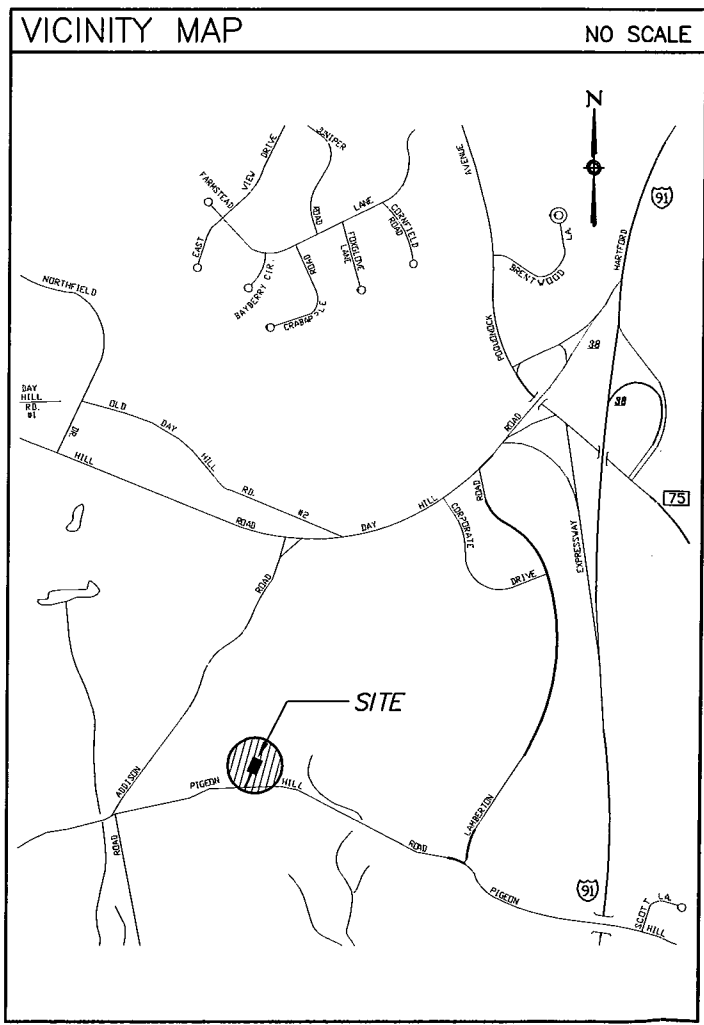


CELLCO PARTNERSHIP
DBA



WINDSOR MTSO TOWER SITE

482 PIGEON HILL ROAD
WINDSOR, CONNECTICUT

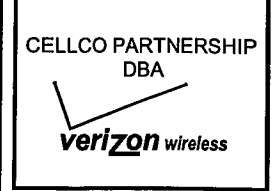


PROJECT SUMMARY	
SITE NAME:	WINDSOR MTSO TOWER SITE
SITE ADDRESS:	480-482 PIGEON HILL ROAD WINDSOR, CONNECTICUT
CONTACT PERSON:	VERIZON WIRELESS SANDY CARTER (860) 803-8219
GOVERNING CODE:	CONNECTICUT STATE BUILDING AND LIFE SAFETY CODE
APPLICANT:	VERIZON WIRELESS 99 EAST RIVER DRIVE EAST HARTFORD, CT 06108
ARCHITECT:	URS CORPORATION A.E.S. 795 BROOK STREET, BLDG 5 ROCKY HILL, CT 06067
M/E/P ENGINEER:	URS CORPORATION A.E.S. 795 BROOK STREET, BLDG 5 ROCKY HILL, CT 06067
SURVEYOR:	URS CORPORATION A.E.S. 500 ENTERPRISE DRIVE ROCKY HILL, CT 06067

LEGEND	
SYMBOL	DESCRIPTION
	SECTION OR DETAIL NUMBER SHEET WHERE DETAIL/SECTION OCCURS
	ELEVATION NUMBER SHEET WHERE ELEVATION OCCURS

ABBREVIATIONS	
MIN.	MINIMUM
V.I.F.	VERIFY IN FIELD
O.C.	ON CENTER
PSF	POUND/SQUARE FOOT
TYP.	TYPICAL
FT.	FEET
SQ.FT.	SQUARE FEET
N/A	NOT APPLICABLE

SHEET INDEX	
SHT. NO.	DESCRIPTION
T-1	TITLE SHEET - GENERAL NOTES AND LEGENDS
SC-1	SITE PLAN



A&E FIRM
URS CORPORATION A.E.S.
795 BROOK STREET, BLDG 5
ROCKY HILL, CONNECTICUT
1-(860)-529-8882

A&E SEAL

PROJECT NO: 36924893

JOB NO: VZ2-004

DRAWN BY: CRS

CHECKED BY:

ISSUED FOR	
08-06-03	REVIEW
08-07-03	FINAL

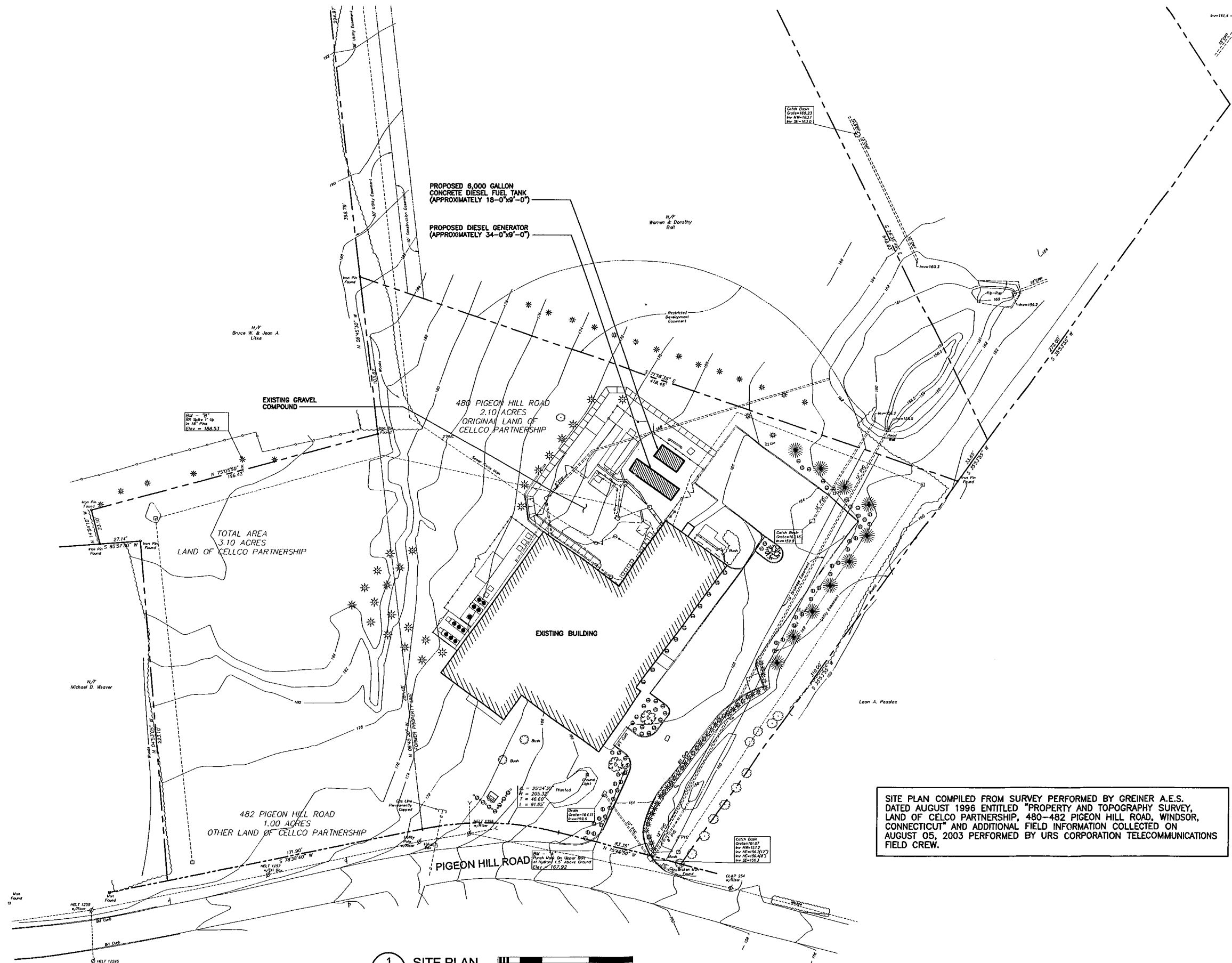
THE INFORMATION CONTAINED
IN THIS SET OF DOCUMENTS
IS PROPRIETARY BY NATURE.
ANY USE OR DISCLOSURE
OTHER THAN THAT WHICH
RELATES TO VERIZON WIRELESS
IS STRICTLY PROHIBITED.

WINDSOR
TOWER SITE
480-482 PIGEON HILL ROAD
WINDSOR, CONNECTICUT

SCALE: AS NOTED

TITLE SHEET-
GENERAL NOTES
AND LEGENDS

T-1



SITE PLAN COMPILED FROM SURVEY PERFORMED BY GREINER A.E.S. DATED AUGUST 1996 ENTITLED "PROPERTY AND TOPOGRAPHY SURVEY, LAND OF CELCO PARTNERSHIP, 480-482 PIGEON HILL ROAD, WINDSOR, CONNECTICUT" AND ADDITIONAL FIELD INFORMATION COLLECTED ON AUGUST 05, 2003 PERFORMED BY URS CORPORATION TELECOMMUNICATIONS FIELD CREW.

1 SITE PLAN
 SC-1 SCALE: 1" = 30'-0"
 0 15 30 60 90

CELLCO PARTNERSHIP
 DBA

A&E FIRM
URS CORPORATION A&E
 795 BROOK STREET, BLDG 5
 ROCKY HILL, CONNECTICUT
 1-(860)-529-8882

A&E SEAL

PROJECT NO: 36924893
 JOB NO: VZ2-004
 DRAWN BY: CRS
 CHECKED BY:

ISSUED FOR	
08-06-03	REVIEW
08-07-03	FINAL

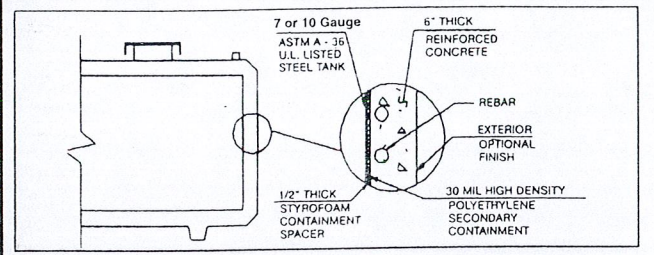
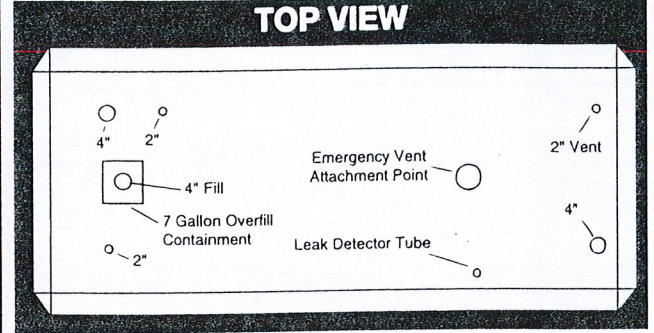
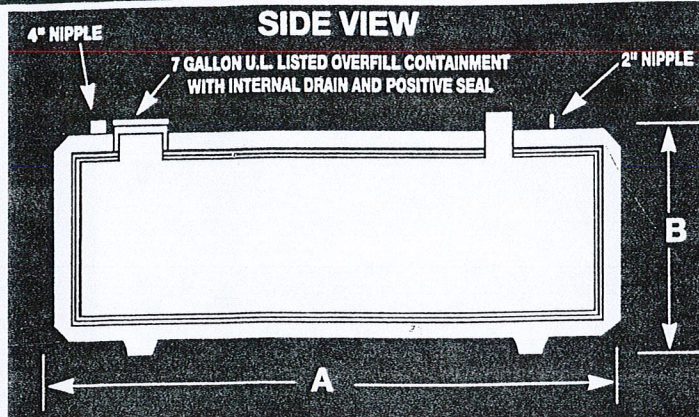
THE INFORMATION CONTAINED IN THIS SET OF DOCUMENTS IS PROPRIETARY BY NATURE. ANY USE OR DISCLOSURE OTHER THAN THAT WHICH RELATES TO VERIZON WIRELESS IS STRICTLY PROHIBITED.

WINDSOR TOWER SITE
 480-482 PIGEON HILL ROAD
 WINDSOR, CONNECTICUT

SCALE: AS NOTED

SITE PLAN

SC-1

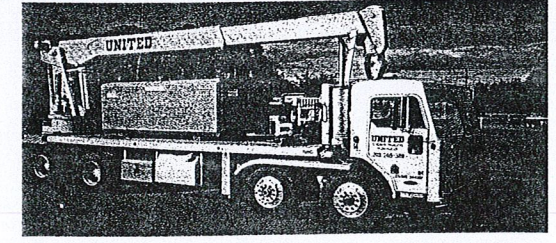


ConVault Size	Weight	A (Length)	B (Height)	Width
250 Gallon	8000 lbs.	7'8"	3'3"	3'9"
500 Gallon	12000 lbs.	11'0"	3'4"	4'6"
1000 Gallon	18000 lbs.	11'0"	4'4"	5'8"
2000 Gallon	28000 lbs.	11'3"	5'6"	8'0"
4000 Gallon	45000 lbs.	17'7"	6'5-3/4"	8'0"
6000 Gallon	60000 lbs.	17'7"	8'9-3/4"	8'0"
8000 Gallon	75000 lbs.	23'1"	8'9-3/4"	8'0"
10000 Gallon	91000 lbs.	28'7"	8'9-3/4"	8'0"
12000 Gallon	101000 lbs.	34'1"	8'9-3/4"	8'0"

DUAL TANK SIZES*				
Dual 250 Gallon	13000 lbs.	11'0"	3'4"	4'6"
Dual 500 Gallon	19000 lbs.	11'0"	4'4"	5'8"
Dual 1000 Gallon	29000 lbs.	11'3"	5'6"	8'0"
Dual 2000 Gallon	47000 lbs.	17'7"	6'5-3/4"	8'0"
Dual 3000 Gallon	61000 lbs.	17'7"	8'9-3/4"	8'0"
Dual 4000 Gallon	76000 lbs.	23'1"	8'9-3/4"	8'0"
Dual 5000 Gallon	92000 lbs.	28'7"	8'9-3/4"	8'0"
Dual 6000 Gallon	103000 lbs.	34'1"	8'9-3/4"	8'0"

THE CONVAULT ADVANTAGE

1-800-234-3119



At last there is an environmentally safe and practical alternative for storing petroleum-based products: ConVault's complete aboveground vaulted tank and fueling system. Constructed of steel and housed in an attractive concrete vault, the double containment tank is a state-of-the-art, cost-efficient way to meet your storage needs.

Put the storage tank of choice to work for you - ConVault.

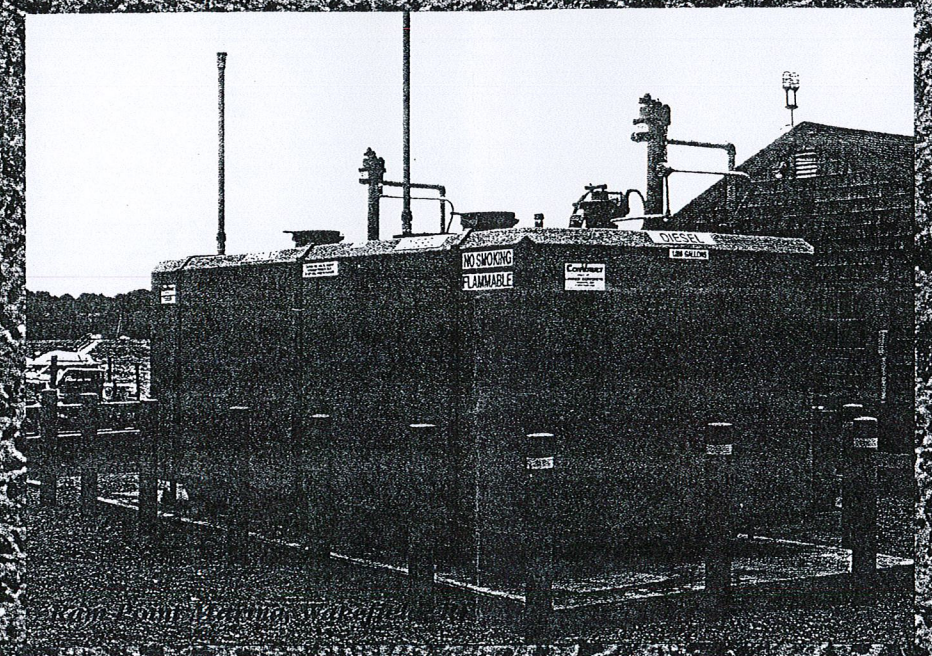


173 Church Street • Yalesville, CT 06492
 Off: (203) 269-3119 • 1-800-234-3119 • Fax: (203) 265-4941



THE LEADER IN ABOVE-GROUND FUEL STORAGE

CONVAULT TANKS U.L. 2085 LISTED

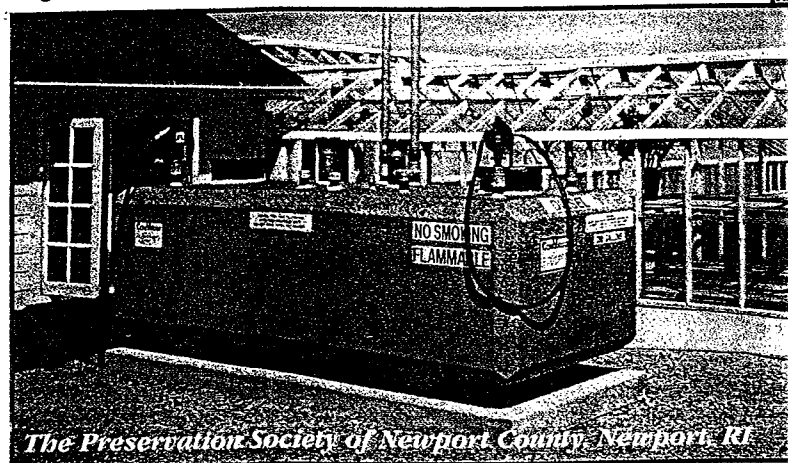


ConVault: PRACTICAL PRODUCTS FOR A SENSITIVE ENVIRONMENT

THE ABOVEGROUND SOLUTION TO THE UNDERGROUND PROBLEM

■ Nationwide interest in the preservation of our environment has prompted all levels of government to issue strict guidelines for the installation, operation and removal of underground storage tanks (UST's). As a result, owners may be faced with expensive upgrades, testing, monitoring equipment and pollution liability insurance to comply with these regulations. In the event of a leak, the actual costs for soil and groundwater clean-up can be catastrophic.

■ **ConVault's** innovative vaulted aboveground storage tanks (AST's) are the proven solution for these problems. The **ConVault** patented system is designed for safety and value while complying with environmental and fire code regulations.



The Preservation Society of Newport County, Newport, RI

MEETS GOVERNMENT, ENVIRONMENTAL AND FIRE SAFETY REGULATIONS

■ **ConVault** AST's meet applicable safety requirements for secondary containment, leak monitoring, overspill containment and overfill protection.

■ **ConVault** AST's have already been approved by fire officials in most jurisdictions. Over 12,000 **ConVault** AST Systems have been installed nationwide within the last nine years, and are currently in use in all regions of the country.

■ Each **ConVault** AST is pressure-tested and meets NFPA 30 and 30A fire safety standards, and is fitted for grounding per NFPA 78.

■ **ConVault** AST's have been certified by the California Air Resources Board for Balanced Phase 2 Vapor Recovery.

■ Primary steel tanks (including overfill containers) meet UL Standards 142 & 2085, and bear UL labels. The special enclosure has been successfully exposed to a 2-hour liquid pool fire test by Underwriters' Laboratories of US/Canada (results available upon request).



North Smithfield High School

DESIGNED FOR VALUE

■ The **ConVault** AST system will provide savings for years to come. More stringent regulations are consistently on the horizon; however, with a **ConVault** AST the need for updating is greatly reduced thus providing you with a solid investment as well as *peace of mind*.

■ The **ConVault** AST system provides a highly durable, long lasting "Exposed Aggregate" finish. This low maintenance surface is sealed with an acrylic clear coat finish that enables the tanks exterior to blend with any outdoor environment.

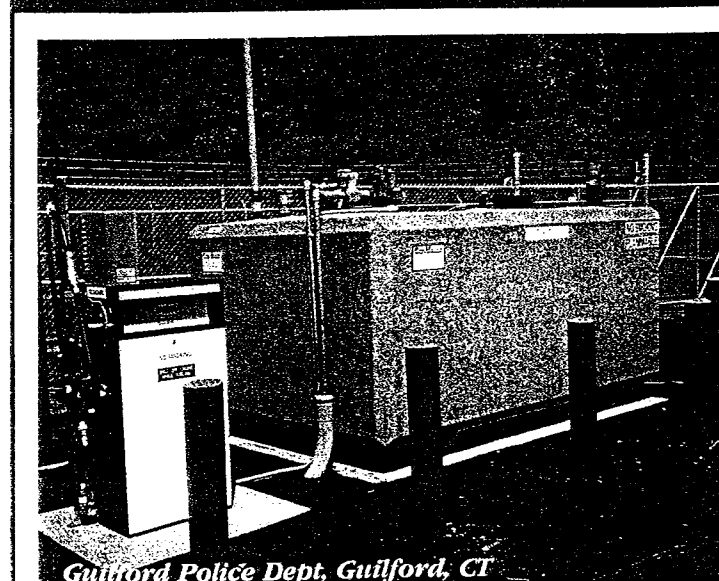
■ Realizing the diversified needs of our industry, **ConVault** has responded by expanding our product line to include tank sizes ranging from 250 gallons to 12,000 gallons. Now you can have quality and variety by choosing a

ConVault AST that is made to fit your needs.

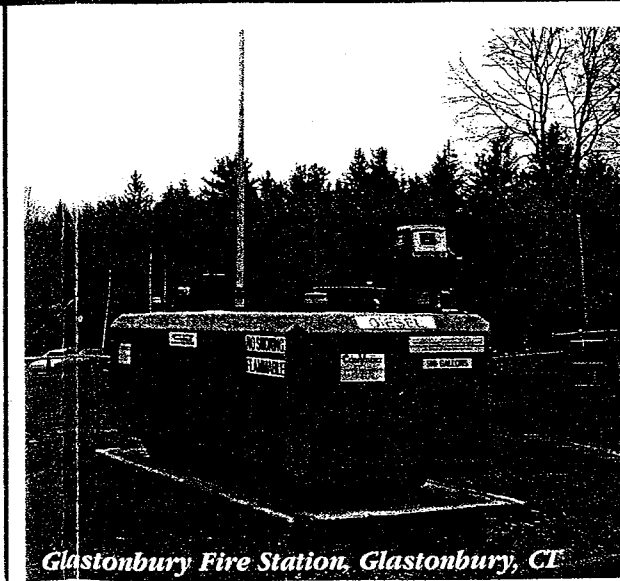
■ Your peace of mind is enhanced with a standard 20 or optional 30 year warranty. **ConVault** AST systems are self contained and portable and allow for tank relocation or resale as your business requirements change!

■ **ConVault** AST's are shop-fabricated under strict quality control standards. The fuel storage and dispensing system is shipped as a finished unit, eliminating the need for site work. In most cases, additional expenses are limited to freight, the cost of a concrete pad and electrical service if desired.

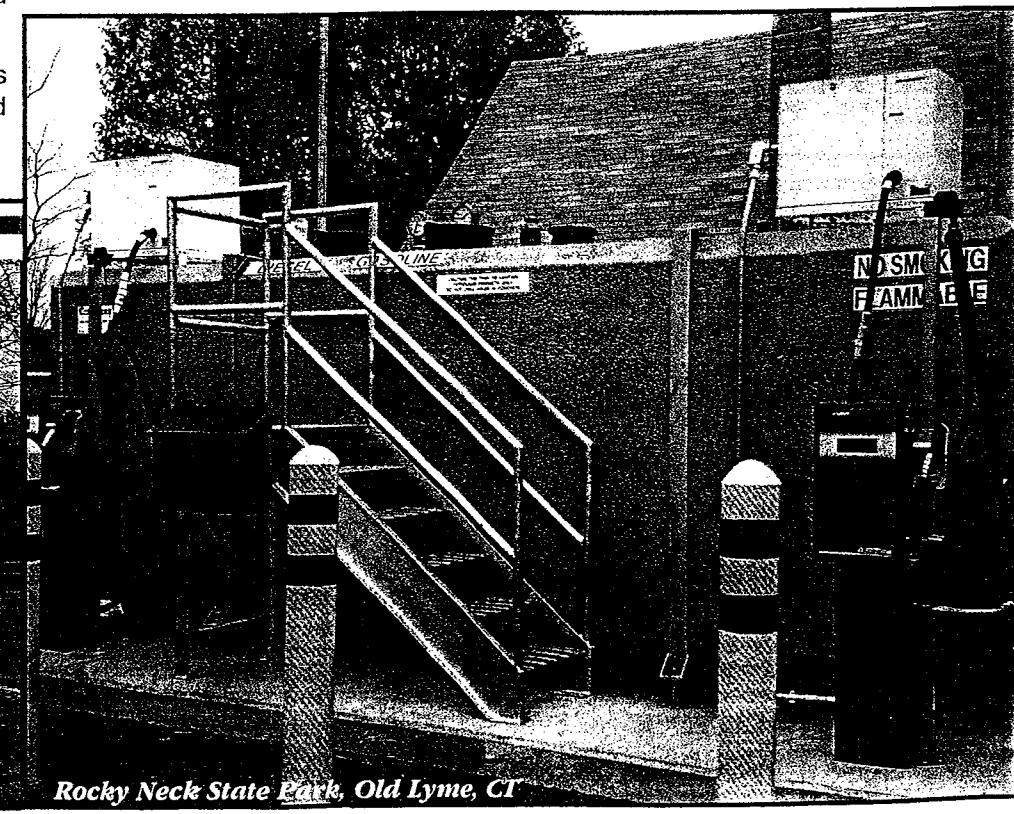
■ Attractive and flexible lease programs are available for both commercial and governmental users.



Guilford Police Dept, Guilford, CT



Glastonbury Fire Station, Glastonbury, CT



Rocky Neck State Park, Old Lyme, CT

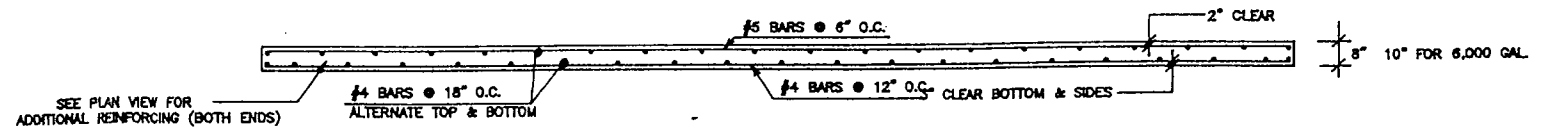
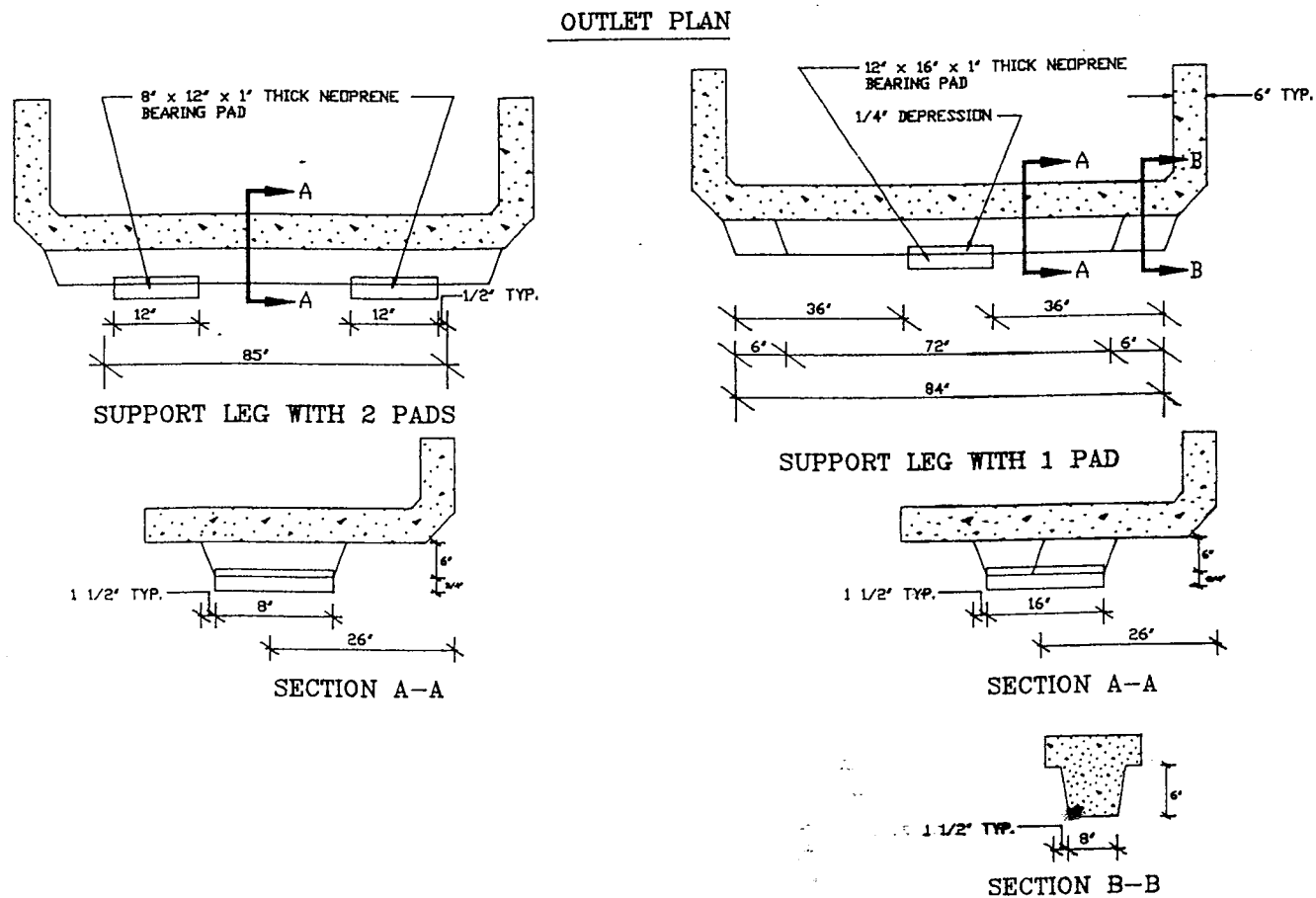
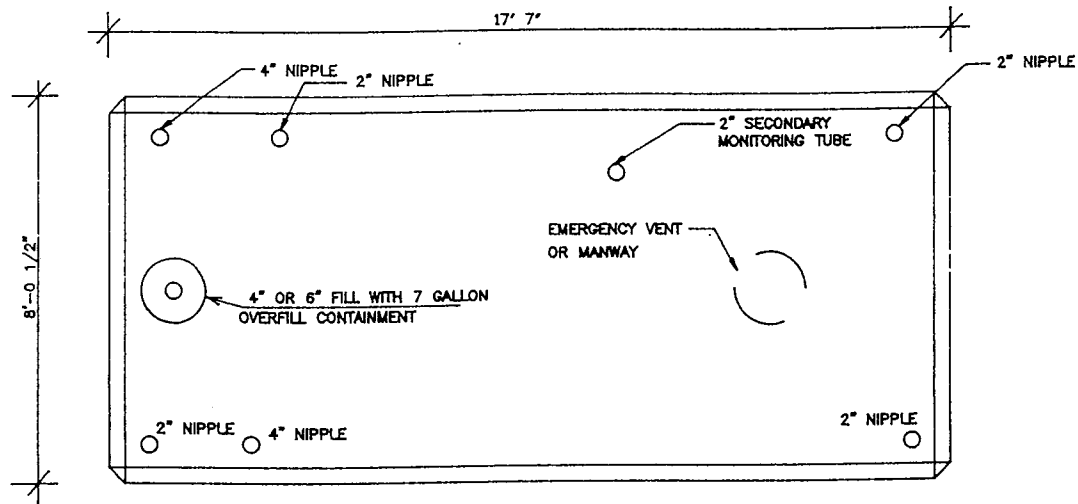
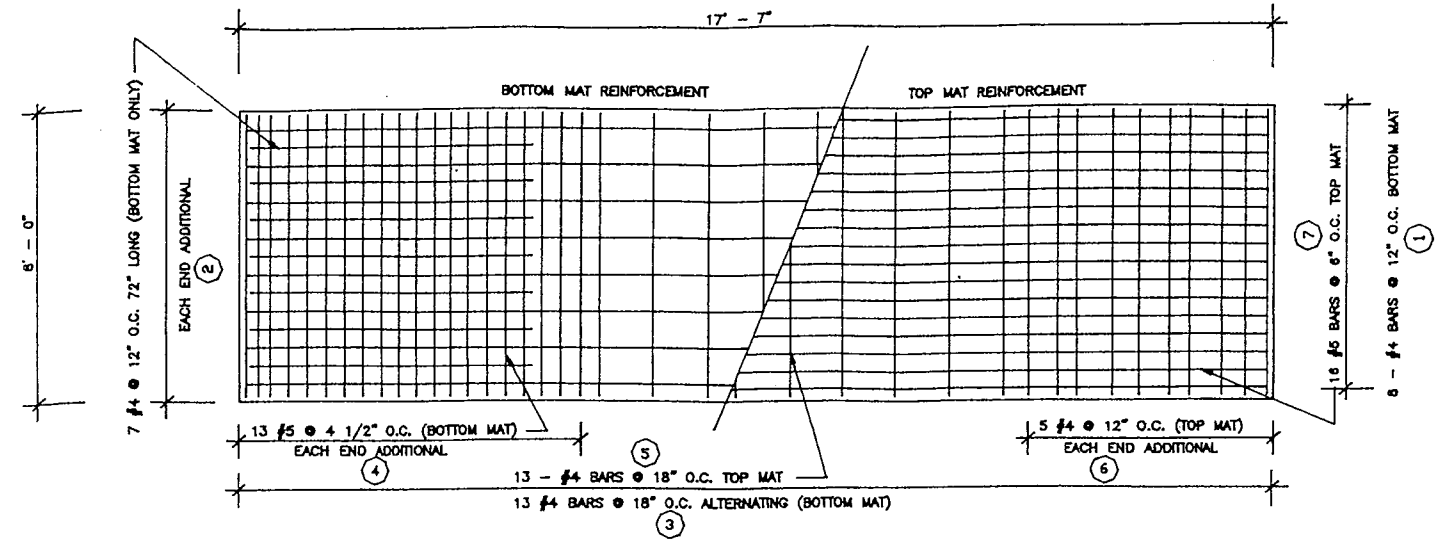
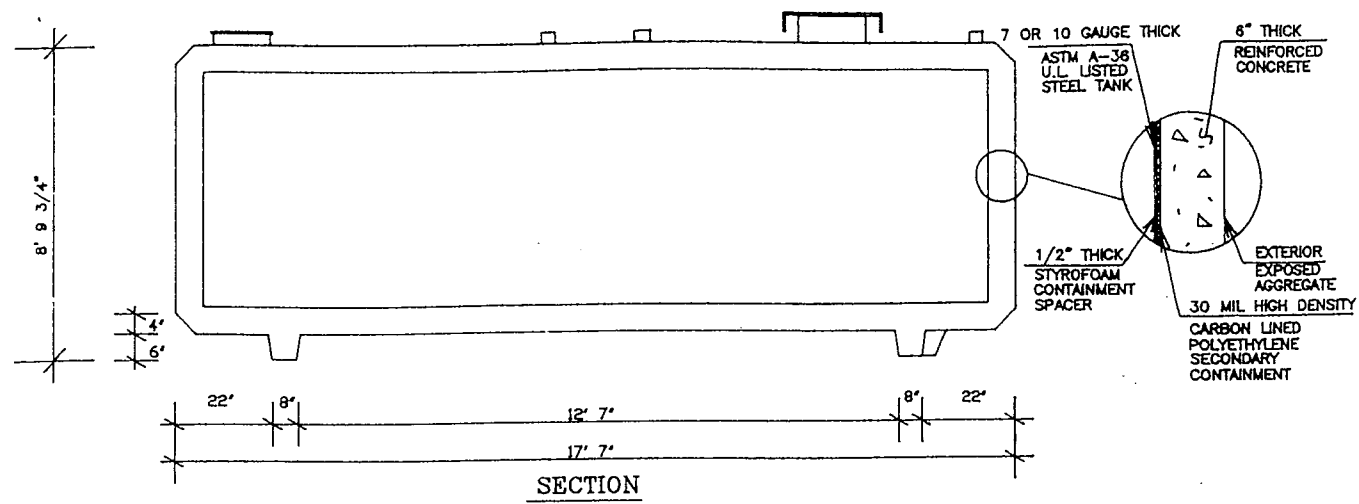
Orange Public Works Dept

ENGINEERED FOR SAFETY

■ **ConVault** AST's are engineered for tightness integrity, utilizing patented manufacturing procedures. The result is a seamless six-inch concrete vault which gives thermal protection, minimizing temperature changes for flammable liquids stored in excessively hot or cold environments. The system contains no cold joints or heat transfer points on the bottom or sides. The monolithic shell also provides ballistic and vehicle impact protection.

■ All **ConVault** tanks are shop tested for both primary & secondary containment, and can be continuously monitored.

■ Technical information with reference to **ConVault** AST's and various test results can be obtained by writing **ConVault**. Always consult local fire and building codes before installing a **ConVault** AST since environmental and fire safety regulations can vary between jurisdictions.



NOTE:
12" SLAB IS REQUIRED WHEN POURED IN THE FIELD
8" SLAB IS AVAILABLE WHEN ORDERED IN PRECAST FROM UNITED CONCRETE

GENERAL NOTES:

STEEL TANK SHALL BE U.L. LISTED FOR ABOVE GROUND STORAGE OF FLAMMABLE LIQUIDS.

STEEL TANK SKIN SHALL BE 7 OR 10 GAUGE THICK A.S.T.M. A-36 STEEL PLATE.

STEEL TANK AND SECONDARY CONTAINMENT SHALL BE ENCASED IN 6" OF REINFORCED CONCRETE.

CONCRETE COMPRESSIVE STRENGTH = 5,000 psi @ 28 DAYS

THE VAULT SHALL BE OF A MONOLITHIC (SEAMLESS AND CONTINUOUS) CONCRETE POUR AND CONTAIN NO COLD JOINTS OR HEAT SINKS (HEAT TRANSFER POINTS) ON THE BOTTOM OR SIDES.

THE SECONDARY CONTAINMENT SHALL CONSIST OF A 30 MIL HIGH-DENSITY CARBON LINED POLYETHYLENE GEO-MEMBRANE

TANK DETAILS & SLAB DETAILS
FOR
CONVAULT
6,000 GALLON TANK
UNITED CONCRETE PRODUCTS, INC.
173 CHURCH STREET
YALESVILLE, CT
(203) 269-3119
(203) 265-4941 FAX

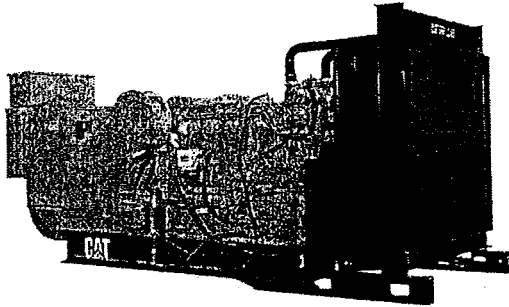


Image shown may not reflect actual package.

STANDBY
1250 kW 1562 kVA
60 Hz 1800 rpm 480 Volts

Caterpillar is leading the power generation marketplace with Power Solutions engineered to deliver unmatched flexibility, expandability, reliability, and cost-effectiveness.

FEATURES

UL 2200

- UL 2200 Listed configuration available
- FULL RANGE OF ATTACHMENTS**
- Wide range of bolt-on system expansion attachments, factory designed and tested
- ENCLOSURES (optional)**
- Weather protective and sound attenuated
- SINGLE-SOURCE SUPPLIER**
- Fully prototype tested with certified torsional vibration analysis available
- WORLDWIDE PRODUCT SUPPORT**
- Caterpillar® dealers provide extensive post sale support including maintenance and repair agreements
- Caterpillar dealers fill 99.7% of parts orders within 24 hours
- Caterpillar dealers have over 1,844 dealer branch stores operating in 166 countries
- The Cat Scheduled Oil Sampling (S•O•SSM) program cost effectively detects internal engine component condition, even the presence of unwanted fluids and combustion by-products

CAT 3512 TA DIESEL ENGINE

- Reliable, rugged, durable design
- Field-proven in thousands of applications worldwide
- Four-stroke-cycle diesel engine combines consistent performance and excellent fuel economy with minimum weight
- UL 2200 Listed packages are available. Certain restrictions may apply. Consult with your Caterpillar dealer

CAT SR4B GENERATOR

- Matched to the performance and output characteristics of Caterpillar engines
- Optimum winding pitch for minimum total harmonic distortion and maximum efficiency
- Single point access to accessory connections
- UL 1446 recognized Class H insulation

CAT CONTROL PANELS

- Controls designed to meet individual customer needs:
 - EMCP II+ offers full-featured power metering and protective relaying
- UL 508A Listed

FACTORY INSTALLED STANDARD & OPTIONAL EQUIPMENT

System	Standard	Optional
Air Inlet	<ul style="list-style-type: none"> • Single element canister type air cleaner • Service indicator 	<ul style="list-style-type: none"> • Dual element & heavy duty air cleaners • Air inlet adapters & shutoff
Cooling	<ul style="list-style-type: none"> • Radiator with guard (43°C) • Coolant drain line with valve • Fan and belt guards • Caterpillar Extended Life Coolant* • Coolant level sensors *Not included with packages without radiators 	<ul style="list-style-type: none"> • Radiator with 50°C ambient capability • Radiator removal • Heat exchanger and expansion tank • Radiator duct flange • Coolant level switch gauge • Jacket water heater
Exhaust	<ul style="list-style-type: none"> • Dry exhaust manifold • Flanged faced outlets 	<ul style="list-style-type: none"> • Mufflers (15 dba) • Stainless steel exhaust flex fittings • Elbows, flanges, expanders & Y adapters
Fuel	<ul style="list-style-type: none"> • Secondary fuel filters • Fuel priming pump • Flexible fuel lines • Fuel cooler* *Not included with packages without radiators 	<ul style="list-style-type: none"> • Water separator • Duplex fuel filter
Generator	<ul style="list-style-type: none"> • Permanent magnet excited • Class H insulation • Class F temperature (105°C prime/130°C standby) • Reactive droop • Digital Voltage Regulator, 3-phase sensing • Bus bar connections • Winding temperature detectors • Anti-condensation space heaters 	<ul style="list-style-type: none"> • Digital Voltage Regulator with KVAR/PF control • Bearing temperature detectors • Oversize, premium & self-excited generators • Cable access box • European bus bars • Circuit breakers, UL listed, 3 pole with shunt trip (low & medium voltage only) • Circuit breakers, IEC compliant, 3 pole with shunt trip (low & medium voltage only) • Space heater relay
Governing	<ul style="list-style-type: none"> • Woodward 2301A isochronous 	<ul style="list-style-type: none"> • Load share governor
Control Panels	<ul style="list-style-type: none"> • EMCP II+ (package mounted, rear facing) 	<ul style="list-style-type: none"> • Customer Communication Module • Local alarm modules • Remote annunciator modules • Auto starting aid & switch* *Cannot be use with UL LIST
Lube	<ul style="list-style-type: none"> • Lubricating oil and filter • Oil drain line with valves • Fumes disposal • Gear type lube oil pump 	<ul style="list-style-type: none"> • Oil level regulator • Deep sump oil pan • Electric & air pre-lube pumps • Manual pre-lube with sump pump • Duplex oil filter
Mounting	<ul style="list-style-type: none"> • 330 mm (13 in) structural steel rails • Spring-type, anti-vibration mounts (shipped loose) 	<ul style="list-style-type: none"> • Isolator removal
Starting/Charging	<ul style="list-style-type: none"> • 24 volt starting motor(s) • 45 amp charging alternator • Batteries with rack and cables • Battery disconnect switch 	<ul style="list-style-type: none"> • Battery chargers (10 Amp) • Oversize batteries • Ether starting aids • Heavy duty starting motors • Barring device (manual) • Air starting motor with control & silencer
General	<ul style="list-style-type: none"> • Right-hand service • Paint - Caterpillar Yellow except rails and radiators gloss black • SAE standard rotation • Flywheel and flywheel housing - SAE No. 00 	<ul style="list-style-type: none"> • Enclosures • Front stub shaft • CSA certification • EU Certificate of Conformance
Note	Standard and optional equipment may vary for UL 2200 Listed Packages. UL 2200 Listed packages may have oversized generators with a different temperature rise and motor starting characteristics.	

SPECIFICATIONS

CAT GENERATOR

SR4B Generator

Frame.....	695
Excitation.....	Permanent Magnet
Pitch.....	0.7333
Number of poles.....	4
Number of bearings.....	Single Bearing
Insulation.....	UL 1446 Recognized Class H with tropicalization and antiabrasion
IP rating.....	Drip Proof IP22
Alignment.....	Pilot Shaft
Overspeed capability - % of rated.....	150
Wave form.....	Less than 5% deviation
Paralleling kit/Droop transformer.....	Standard
Voltage regulator.3 Phase sensing with selectible volts/Hz	
Voltage regulation.....	Less than +/- 1/2% (steady state)
Less than +/- 1% (no load to full load)	
Telephone Influence Factor.....	Less than 50
Harmonic distortion.....	Less than 5%

CAT DIESEL ENGINE

3512 TA, 4-stroke-cycle watercooled diesel

Bore - mm.....	170.00 mm (6.69 in)
Stroke - mm.....	190.00 mm (7.48 in)
Displacement - L.....	51.80 L (3160.84 cu. in)
Compression ratio.....	13.5:1
Aspiration.....	TA
Fuel system.....	Direct unit injection
Governor type.....	Woodward

CAT CONTROL PANELS

- EMCP II+
- 24 Volt DC Control
- NEMA 12, IP44 enclosure
- Electronically dead front
- Lockable hinged door
- Generator Instruments meet ANSI C-39-1
- Generator terminal box mounted
- Single location for customer connector
- UL508A Listed
- Panel illuminating lights
- Auto start/stop control
- True RMS metering, 3-phase
- Digital indications for:
 - RPM
 - Operating hours
 - Oil pressure
 - Coolant temperature
 - System DC volts
 - L-L volts, L-N volts, Phase amps, Hz
 - ekW, kVA, kVAR, kWhr, %kW, PF
- Shutdowns with indicating lights for:
 - Low oil pressure
 - High coolant temperature
 - Low coolant level
 - Overspeed
 - Emergency stop
 - Failure to start (overcrank)
- Programmable protective relaying functions
 - Under and over voltage
 - Under and over frequency
 - Reverse power
 - Overcurrent (phase & total)
- Programmable kW level relay
- 3 spare indicator LED's (programmable)
- 4 spare alarm/shutdown inputs



STANDBY 1250 ekW 1562 kVA

60 Hz 1800 rpm 480 Volts

TECHNICAL DATA

Open Generator Set - - 1800 rpm/60 Hz/480 Volts	DM6686	
Package Performance		
Genset Power rating with fan	1250 ekW	
Genset Power rating @ 0.8 pf	1562.5 kVA	
Fuel Consumption		
100% load with fan	354.0 L/hr	93.5 Gal/hr
75% load with fan	259.2 L/hr	68.5 Gal/hr
50% load with fan	184.9 L/hr	48.8 Gal/hr
Cooling System		
Air flow restriction (system)	.12 kPa	0.48 in. water
Engine coolant capacity	156.8 L	41.4 Gal
Radiator coolant capacity	223.3 L	59.0 Gal
Engine Coolant capacity with radiator/exp. tank	380.1 L	100.4 Gal
Exhaust System		
Combustion air inlet flow rate	106.0 m ³ /min	3743.4 cfm
Exhaust stack gas temperature	541.7 Deg C	1007 Deg F
Exhaust gas flow rate	305.8 m ³ /min	10799.2 cfm
Exhaust flange size (internal diameter)	203.2 mm	8.0 in
Exhaust system backpressure (maximum allowable)	6.7 kPa	26.9 in. water
Heat Rejection		
Heat rejection to coolant (total)	845 kW	48055 Btu/min
Heat rejection to exhaust (total)	1432 kW	81438 Btu/min
Heat rejection to atmosphere from engine	126 kW	7166 Btu/min
Heat rejection to atmosphere from generator	59.66 kW	3392.86 Btu/min
Alternator		
Motor starting capability @ 30% voltage dip	3018 kVA	
Frame	695	
Temperature Rise	130 Deg C	266 Deg F
Lube System		
Sump refill with filter	310.4 L	82.0 Gal

Ambient capability at 200 m (660 ft) above sea level. For ambient capability at other altitudes, consult your Caterpillar dealer.
 UL 2200 Listed packages may have oversized generators with a different temperature rise and motor starting characteristics. Generator temperature rise is based on a 40°C ambient per NEMA MG1-32.



STANDBY 1250 eKW 1562 kVA

60 Hz 1800 rpm 480 Volts

RATING DEFINITIONS AND CONDITIONS

Meets or Exceeds International Specifications: ABGSM TM3, AS1359, AS2789, BS4999, BS5000, BS5514, DIN6271, DIN6280, EGSA101P, IEC34/1, ISO3046/1, ISO8528, JEM1359, NEMA MG 1-22, VDE0530, 89/392/EEC, 89/336/EEC

Standby - Output available with varying load for the duration of the interruption of the normal source power. Standby power in accordance with ISO8528. Fuel stop power in accordance with ISO3046/1, AS2789, DIN6271, and BS5514. Standby ambients shown indicate ambient temperature at 100 percent load which results in a coolant top tank temperature just below the shutdown temperature.

Ratings are based on SAE J1995 standard conditions. These ratings also apply at ISO3046/1, DIN6271, and BS5514 standard conditions.

Fuel Rates are based on fuel oil of 35° API (16° C or 60° F) gravity having an LHV of 42 780 kJ/kg (18,390 Btu/lb) when used at 29° C (85° F) and weighing 838.9 g/liter (7.001 lbs/U.S. gal.).

Additional Ratings may be available for specific customer requirements. Consult your Caterpillar representative for details.



STANDBY 1250 kW 1562 kVA

60 Hz 1800 rpm 480 Volts

DIMENSIONS

Package Dimensions		
Length	5140.2 mm	202.37 in
Width	2317.8 mm	91.25 in
Height	2545.1 mm	100.2 in
Weight	12 137 kg	26,757 lb

Note: Do not use for installation design.
See general dimension drawings for
detail (Drawing #2001174).



Performance No.: DM6686

Feature Code:: 512DE2H

Source:: USA Sourced

11 August 2003

887343

www.CAT-ElectricPower.com

Caterpillar
All rights reserved.

Materials and specifications are subject to change without notice.
The International System of Units (SI) is used in this publication.

