



48 Spruce Street
Oakland, NJ 07436
Phone: (201)-951-3869
Tom Kincaid
Real Estate Consultant

May 6, 2014

Hand Delivered

Ms. Melanie A. Bachman
Acting Executive Director
Connecticut Siting Council
10 Franklin Square
New Britain, CT 06051

RE: Sprint Spectrum L.P. notice of intent to modify an existing telecommunications facility located at 428 Platt Hill Road, Winsted, CT 06098. Known to Sprint Spectrum L.P. as site CT73XC001.

Dear Ms. Roberts:

In order to accommodate technological changes, implement Code Division Multiple Access ("CDMA") and/or Long Term Evolution ("LTE") capabilities, and enhance system performance in the state of Connecticut, Sprint Spectrum L.P. plans to modify the equipment configurations at many of its existing cell sites. Please accept this letter and attachments as notification, pursuant to R.C.S.A. Section 16-50j-73, of construction which constitutes an exempt modification pursuant to R.C.S.A. Section 16-50j-72(b)(2). In compliance with R.C.S.A. Section 16-50j-73, a copy of this letter and its attachments is being sent to the chief elected official of the municipality in which affected cell site is located.

CDMA employs Spread-Spectrum technology and special coding scheme to allow multiple users to be multiplexed over the same physical channel.

LTE is a new high-performance air interface for cellular mobile communications. It is designed to increase the capacity and speed of mobile telephone networks.

Attached is a summary of the planned modifications, including power density calculations reflecting the change in Sprint's operations at the site. Also included is documentation of the structural sufficiency of the tower to accommodate the revised antenna configuration.

The changes to the facility do not constitute modification as defined Connecticut General Statutes (“C.G.S.”) Section 16-50i(d) because the general physical characteristics of the facility will not be significantly changed or altered. Rather, the planned changes to the facility fall squarely within those activities explicitly provided for the R.C.S.A. Section 16-50j-72(b)(2).

1. The height of the overall structure will not be affected.
2. The proposed changes will not extend the site boundaries. There will be no effect on the site compound.
3. The proposed changes will not increase the noise level at the existing facility by 6 decibels or more.
4. Radio Frequency power density may increase due to the use of one or more CDMA transmissions. Moreover, LTE will utilize additional radio frequencies newly licensed by the FCC for cellular mobile communications. However, the changes will not increase the calculated “worst case” power density for the combined operations at the site to a level at or above the applicable standard for uncontrolled environments as calculated for a mixed frequency site.

For the foregoing reasons Sprint Spectrum L.P. respectfully submits that the proposed changes at the referenced site constitute exempt modifications under R.C.S.A. Section 16-50j-72(b)(2).

Please feel free to call me at (845)-499-4712 or email JNotaro@Transcendwireless.com with questions concerning this matter.
Thank you for your consideration.

Sincerely,

Jennifer Notaro
Real Estate Consultant

RADIO FREQUENCY FCC REGULATORY COMPLIANCE
MAXIMUM PERMISSIBLE EXPOSURE (MPE) ASSESSMENT

Sprint Existing Facility

Site ID: CT73XC001

Winsted – Platt Hill Road

428 Platt Hill Road
Winsted, CT 06098

March 6, 2014

EBI Project Number: 62140944

March 6, 2014

Sprint
Attn: RF Engineering Manager
1 International Boulevard, Suite 800
Mahwah, NJ 07495

Re: Radio Frequency Maximum Permissible Exposure (MPE) Assessment for Site:
CT73XC001 - Winsted Platt Hill Road

Site Total: 9.745% - MPE% in full compliance

EBI Consulting was directed to analyze the proposed upgrades to the existing Sprint facility located at 428 Platt Hill Road, Winsted, CT, for the purpose of determining whether the radio frequency (RF) exposure levels from the proposed Sprint equipment upgrades on this property are within specified federal limits.

All information used in this report was analyzed as a percentage of current Maximum Permissible Exposure (% MPE) as listed in the FCC OET Bulletin 65 Edition 97-01 and ANSI/IEEE Std C95.1. The FCC regulates Maximum Permissible Exposure in units of microwatts per square centimeter ($\mu\text{W}/\text{cm}^2$). The number of $\mu\text{W}/\text{cm}^2$ calculated at each sample point is called the power density. The exposure limit for power density varies depending upon the frequencies being utilized. Wireless Carriers and Paging Services use different frequency bands each with different exposure limits, therefore it is necessary to report results and limits in terms of percent MPE rather than power density.

All results were compared to the FCC (Federal Communications Commission) radio frequency exposure rules, 47 CFR 1.1307(b)(1) – (b)(3), to determine compliance with the Maximum Permissible Exposure (MPE) limits for General Population/Uncontrolled environments as defined below.

General population/uncontrolled exposure limits apply to situations in which the general public may be exposed or in which persons who are exposed as a consequence of their employment may not be made fully aware of the potential for exposure or cannot exercise control over their exposure. Therefore, members of the general public would always be considered under this category when exposure is not employment related, for example, in the case of a telecommunications tower that exposes persons in a nearby residential area.

Public exposure to radio frequencies is regulated and enforced in units of microwatts per square centimeter ($\mu\text{W}/\text{cm}^2$). The general population exposure limit for the cellular band (850 MHz Band) is

approximately $567 \mu\text{W}/\text{cm}^2$, and the general population exposure limit for the 1900 MHz and 2500 MHz bands is $1000 \mu\text{W}/\text{cm}^2$. Because each carrier will be using different frequency bands, and each frequency band has different exposure limits, it is necessary to report percent of MPE rather than power density.

Occupational/controlled exposure limits apply to situations in which persons are exposed as a consequence of their employment and in which those persons who are exposed have been made fully aware of the potential for exposure and can exercise control over their exposure. Occupational/controlled exposure limits also apply where exposure is of a transient nature as a result of incidental passage through a location where exposure levels may be above general population/uncontrolled limits (see below), as long as the exposed person has been made fully aware of the potential for exposure and can exercise control over his or her exposure by leaving the area or by some other appropriate means.

Additional details can be found in FCC OET 65.

CALCULATIONS

Calculations were done for the proposed upgrades to the existing Sprint Wireless antenna facility located at 428 Platt Hill Road, Winsted, CT, using the equipment information listed below. All calculations were performed per the specifications under FCC OET 65. All calculations were performed assuming the main lobe of the antenna was focused at the base of the tower to present a worst case scenario. Actual values seen from this site will be dramatically less than those shown in this report. For this report the sample point is the top of a 6 foot person standing at the base of the tower.

For all calculations, all emissions were calculated using the following assumptions:

- 1) 3 channels in the 1900 MHz Band were considered for each sector of the proposed installation.
- 2) 1 channel in the 800 MHz Band was considered for each sector of the proposed installation
- 3) 2 channels in the 2500 MHz Band were considered for each sector of the proposed installation.
- 4) All radios at the proposed installation were considered to be running at full power and were uncombined in their RF transmissions paths per carrier prescribed configuration. Per FCC OET Bulletin No. 65 - Edition 97-01 recommendations to achieve the maximum anticipated value at each sample point, all power levels emitting from the proposed antenna installation are increased by a factor of 2.56 to account for possible in-phase reflections from the surrounding environment. This is rarely the case, and if so, is never continuous.
- 5) For the following calculations the sample point was the top of a six foot person standing at the base of the tower. The maximum gain of the antenna per the antenna manufactures supplied specifications was used in this direction.

- 6) The antennas used in this modeling are the RFS APXVSPP18-C-A20 and the RFS APXVTMM-C-120. This is based on feedback from the carrier with regards to anticipated antenna selection. The RFS APXVSPP18-C-A20 has a 15.9 dBd gain value at its main lobe at 1900 MHz and 13.4 dBd at its main lobe for 850 MHz. The RFS APXVTMM-C-120 has a 15.9 dBd gain value at its main lobe at 2500 MHz. All calculations were performed assuming the main lobe of the antenna was focused at the base of the tower to present a worst case scenario.
- 7) The antenna mounting height centerline for the proposed antennas is **196 feet** above ground level (AGL).
- 8) Emissions values for additional carriers were taken from the Connecticut Siting Council active database. Values in this database are provided by the individual carriers themselves.

All calculation were done with respect to uncontrolled / general public threshold limits

Site ID	CT73XC001 - Winsted Platt Hill Road
Site Address	428 Platt Hill Road, Winsted, CT 06098
Site Type	Self Support Tower

Sector 1

Antenna Number	Antenna Make	Antenna Model	Radio Type	Frequency Band	Technology	Power Out Per Channel (Watts)	Number of Channels	Composite Power	Antenna Gain in direction of sample point (dBd)	Antenna Height (ft)	analysis height	Antenna Height Meters	Cable Size	Cable Loss (dB)	Additional Loss (dB)	Gain Factor	ERP	Power Density Value	Power Density Percentage
1a	RFS	APXVSP18-C-A20	RRH	1900 MHz	CDMA / LTE	20	3	60	15.9	196	190	57.9127	1/2 "	0.5	3	17.378008	1042.6805	10.38365	1.03836%
1a	RFS	APXVSP18-C-A20	RRH	850 MHz	CDMA / LTE	20	1	20	13.4	196	190	57.9127	1/2 "	0.5	3	9.7723722	195.44744	1.946385	0.34328%
1B	RFS	APXVTMM14-C-120	RRH	2500 MHz	CDMA / LTE	20	2	40	13.4	196	190	57.9127	1/2 "	0.5	3	9.7723722	390.89489	3.89277	0.68656%

Sector total Power Density Value:

2.068%

Sector 2

Antenna Number	Antenna Make	Antenna Model	Radio Type	Frequency Band	Technology	Power Out Per Channel (Watts)	Number of Channels	Composite Power	Antenna Gain in direction of sample point (dBd)	Antenna Height (ft)	analysis height	Antenna Height Meters	Cable Size	Cable Loss (dB)	Additional Loss (dB)	Gain Factor	ERP	Power Density Value	Power Density Percentage
2a	RFS	APXVSP18-C-A20	RRH	1900 MHz	CDMA / LTE	20	3	60	15.9	196	190	57.9127	1/2 "	0.5	3	17.378008	1042.6805	10.38365	1.03836%
2a	RFS	APXVSP18-C-A20	RRH	850 MHz	CDMA / LTE	20	1	20	13.4	196	190	57.9127	1/2 "	0.5	3	9.7723722	195.44744	1.946385	0.34328%
2B	RFS	APXVTMM14-C-120	RRH	2500 MHz	CDMA / LTE	20	2	40	13.4	196	190	57.9127	1/2 "	0.5	3	9.7723722	390.89489	3.89277	0.68656%

Sector total Power Density Value:

2.068%

Sector 3

Antenna Number	Antenna Make	Antenna Model	Radio Type	Frequency Band	Technology	Power Out Per Channel (Watts)	Number of Channels	Composite Power	Antenna Gain in direction of sample point (dBd)	Antenna Height (ft)	analysis height	Antenna Height Meters	Cable Size	Cable Loss (dB)	Additional Loss (dB)	Gain Factor	ERP	Power Density Value	Power Density Percentage
3a	RFS	APXVSP18-C-A20	RRH	1900 MHz	CDMA / LTE	20	3	60	15.9	196	190	57.9127	1/2 "	0.5	3	17.378008	1042.6805	10.38365	1.03836%
3a	RFS	APXVSP18-C-A20	RRH	850 MHz	CDMA / LTE	20	1	20	13.4	196	190	57.9127	1/2 "	0.5	3	9.7723722	195.44744	1.946385	0.34328%
3B	RFS	APXVTMM14-C-120	RRH	2500 MHz	CDMA / LTE	20	2	40	13.4	196	190	57.9127	1/2 "	0.5	3	9.7723722	390.89489	3.89277	0.68656%

Sector total Power Density Value:

2.068%

Site Composite MPE %

Carrier	MPE %
Sprint	6.205%
AT&T	0.210%
Nextel	1.630%
Dept of Homeland Security	1.700%
Total Site MPE %	9.745%

Summary

All calculations performed for this analysis yielded results that were well within the allowable limits for general public Maximum Permissible Exposure (MPE) to radio frequency energy.

The anticipated Maximum Composite contributions from the Sprint facility are **6.205% (2.068% from each sector)** of the allowable FCC established general public limit considering all three sectors simultaneously sampled at the ground level.

The anticipated composite MPE value for this site assuming all carriers present is **9.745%** of the allowable FCC established general public limit sampled at 6 feet above ground level. This total composite site value is based upon MPE values listed in the Connecticut Siting Council database for existing carrier emissions.

FCC guidelines state that if a site is found to be out of compliance (over allowable thresholds), that carriers over a 5% contribution to the composite value will require measures to bring the site into compliance. For this facility, the composite values calculated were well within the allowable 100% threshold standard per the federal government.



Scott Heffernan
RF Engineering Director

EBI Consulting
21 B Street
Burlington, MA 01803

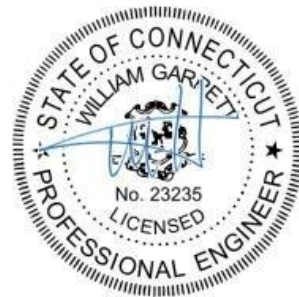


AMERICAN TOWER®
CORPORATION

Structural Analysis Report

Structure : 225.5 ft Self Supported Tower
ATC Site Name : Winstead, CT
ATC Site Number : 88019
Engineering Number : 56785922
Proposed Carrier : Sprint Nextel
Carrier Site Name : Winsted-Platt Hill Rd
Carrier Site Number : CT73XC001
Site Location : 428 Platt Hill Road
Winsted, CT 06098-2522
41.898286,-73.116011
County : Litchfield
Date : March 29, 2014
Max Usage : 85%
Result : Pass

Michael Deese
Structural Team Leader



Mar 31 2014 8:00 AM



Table of Contents

Introduction	1
Supporting Documents	1
Analysis	1
Conclusion.....	1
Existing and Reserved Equipment.....	2
Proposed Equipment	2
Structure Usages	3
Foundations	3
Standard Conditions	4
Calculations	Attached



Introduction

The purpose of this report is to summarize results of a structural analysis performed on the 225.5 ft self supported tower to reflect the change in loading by Sprint Nextel.

Supporting Documents

Tower Drawings	TEP Mapping: Job #070513, dated April 5, 2007
Foundation Drawing	TEP Mapping: Job #070513, dated April 5, 2007
Geotechnical Report	TEP Project #070513.02, dated April 4, 2007

Analysis

The tower was analyzed using Power Line Systems, Inc. tower analysis software. This program considers an elastic three-dimensional model and second-order effects per ANSI/EIA-222.

Basic Wind Speed:	80 mph (Fastest Mile) / 100 mph (3-Second Gust)
Basic Wind Speed w/ Ice:	69 mph (Fastest Mile)w/ 0.5" radial ice concurrent
Code:	ANSI/TIA/EIA-222-F / 2003 IBC / 2005 CT Supplements & 2009 CT Amendments

Conclusion

Based on the analysis results, the structure meets the requirements per the applicable codes listed above. The tower and foundation can support the equipment as described in this report.

If you have any questions or require additional information, please contact American Tower via email at Engineering@americantower.com. Please include the American Tower site name, site number, and engineering number in the subject line for any questions.



Existing and Reserved Equipment

Elevation ¹ (ft)		Qty	Antenna	Mount Type	Lines	Carrier
Mount	RAD					
225.0	225.0	4	KS15676	Platform w/ Handrails	-	AT&T
205.0	215.0	1	Andrew DB616E-BC	Side Arm	(1) 1 1/4" Coax	US Treasury
196.0	196.0	3	Alcatel-Lucent 800MHz 2X50W RRH w/ Filter	Sector Frame	(3) 1 1/4" Hybriflex	Sprint Nextel
		3	Alcatel-Lucent 1900MHz 4X45 RRH			
		3	RFS APXVSP18-C-A20			
180.0	180.0	1	Andrew DB616E-BC	Side Arm	(1) 1 1/4" Coax	US Dept Of Homeland Security

Equipment to be Removed

Elevation ¹ (ft)		Qty	Antenna	Mount Type	Lines	Carrier
Mount	RAD					
196.0	196.0	6	Andrew DB846G90A-XY	Sector Frame	(15) 1 5/8" Coax	Sprint Nextel
		3	EMS RR90-17-04DPL2			

Proposed Equipment

Elevation ¹ (ft)		Qty	Antenna	Mount Type	Lines	Carrier
Mount	RAD					
196.0	196.0	3	Alcatel-Lucent TD-RRH8x20-25 w/ SS	Sector Frame	(1) 7/8" (0.88") Fiber	Sprint Nextel
		3	RFS APXVTM14-C-I20			

¹Mount elevation is defined as height above bottom of steel structure to the bottom of mount, RAD elevation is defined as center of antenna above ground level (AGL).

Install proposed coax in the place of the existing Sprint Nextel coax.



Structure Usages

Structural Component	Controlling Usage	Pass/Fail
Legs	56%	Pass
Diagonals	85%	Pass
Horizontals	50%	Pass
Anchor Bolts	42%	Pass

Foundations

Reaction Component	Analysis Reactions
Uplift (Kips)	158.7
Axial (Kips)	235.5

The structure base reactions resulting from this analysis were found to be acceptable through analysis based on geotechnical and foundation information, therefore no modification or reinforcement of the foundation will be required.

The foundation and anchorages meet or exceed a factor of safety of 2.0 required by the State of Connecticut



Standard Conditions

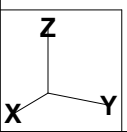
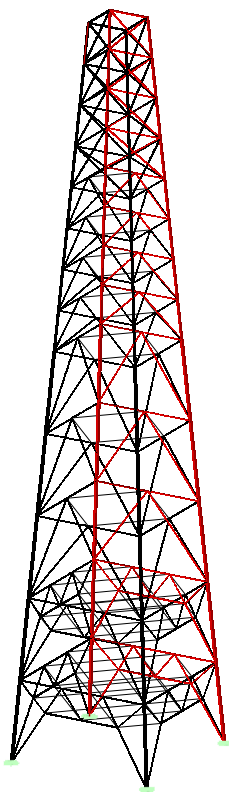
All engineering services are performed on the basis that the information used is current and correct. This information may consist of, but is not necessary limited, to:

- Information supplied by the client regarding the structure itself, antenna, mounts and feed line loading on the structure and its components, or other relevant information.
- Information from drawings in the possession of American Tower Corporation, or generated by field inspections or measurements of the structure.

It is the responsibility of the client to ensure that the information provided to ATC Tower Services, Inc. and used in the performance of our engineering services is correct and complete. In the absence of information to the contrary, we assume that all structures were constructed in accordance with the drawings and specifications and that their capacity has not significantly changed from the "as new" condition.

Unless explicitly agreed by both the client and American Tower Corporation, all services will be performed in accordance with the current revision of ANSI/TIA -222. The design basic wind speed will be determined based on the minimum basic wind speed as prescribed in ANSI/TIA-222. Although every effort is taken to ensure that the loading considered is adequate to meet the requirements of all applicable regulatory entities, we can provide no assurance to meet any other local and state codes or requirements. If wind and ice loads or other relevant parameters are to be different from the minimum values recommended by the codes, the client shall specify the exact requirement.

All services are performed, results obtained, and recommendations made in accordance with generally accepted engineering principles and practices. ATC Tower Services, Inc. is not responsible for the conclusions, opinions and recommendations made by others based on the information we supply.



*** End of Report

Site #: 88019
Name: Winstead, CT

Engineer: MED
Date: 03/29/14

Windspeed: No Ice: 80 mph	Ice: 69 mph
Carrier Sprint Nextel	

Taper: -0.144444
FW @ Base: 45 ft

Taper Change: 225 ft
FW @ Top: 12.5 ft

Joint Label	Symmetry Code	X Coord. (ft)	Y Coord. (ft)	Z Coord. (ft)	X Disp. Rest.	Y Disp. Rest.	Z Disp. Rest.	X Rot. Rest.	Y Rot. Rest.	Z Rot. Rest.	Drop	# Vert	Drop (ft)	Height (ft)	Type	Count	Z-Elev. (ft)	FW (ft)	# Sub-Brace
											Sub-Brace (Y or Blank)								
0	XY-Symmetry	22.5	22.5	0	Fixed	Fixed	Fixed	Fixed	Fixed	Fixed			8.333	25	2	1	0	45	3
1	XY-Symmetry	20.69444444	20.69444444	25	Free	Free	Free	Free	Free	Free			8.333	25	2	2	25	41.38888889	3
2	XY-Symmetry	18.88888889	18.88888889	50	Free	Free	Free	Free	Free	Free				25	A	3	50	37.77777778	2
3	XY-Symmetry	17.08333333	17.08333333	75	Free	Free	Free	Free	Free	Free				25	A	4	75	34.16666667	2
4	XY-Symmetry	15.27777778	15.27777778	100	Free	Free	Free	Free	Free	Free				25	A	5	100	30.55555556	2
5	XY-Symmetry	13.47222222	13.47222222	125	Free	Free	Free	Free	Free	Free				12.5	A	6	125	26.94444444	1
6	XY-Symmetry	12.56944444	12.56944444	137.5	Free	Free	Free	Free	Free	Free				12.5	A	7	137.5	25.13888889	1
7	XY-Symmetry	11.66666667	11.66666667	150	Free	Free	Free	Free	Free	Free				12.5	A	8	150	23.33333333	1
8	XY-Symmetry	10.76388889	10.76388889	162.5	Free	Free	Free	Free	Free	Free				12.5	A	9	162.5	21.52777778	1
9	XY-Symmetry	9.861111111	9.861111111	175	Free	Free	Free	Free	Free	Free			1	12.5	X	10	175	19.72222222	1
10	XY-Symmetry	8.958333333	8.958333333	187.5	Free	Free	Free	Free	Free	Free			1	12.5	X	11	187.5	17.91666667	1
11	XY-Symmetry	8.055555556	8.055555556	200	Free	Free	Free	Free	Free	Free			1	12.5	X	12	200	16.11111111	1
12	XY-Symmetry	7.152777778	7.152777778	212.5	Free	Free	Free	Free	Free	Free				12.5	X	13	212.5	14.30555556	1
13	XY-Symmetry	6.25	6.25	225	Free	Free	Free	Free	Free	Free						14	225	12.5	
A1	XY-Symmetry	20.69444444	6.898148148	25	Free	Free	Free	Free	Free	Free									
A2	XY-Symmetry	6.898148148	20.69444444	25	Free	Free	Free	Free	Free	Free									
A3	XY-Symmetry	18.88888889	6.296296296	50	Free	Free	Free	Free	Free	Free									
A4	XY-Symmetry	6.296296296	18.88888889	50	Free	Free	Free	Free	Free	Free									
A5	Y-Symmetry	17.08333333	0	75	Free	Free	Free	Free	Free	Free									
A6	X-Symmetry	0	17.08333333	75	Free	Free	Free	Free	Free	Free									
A7	Y-Symmetry	15.27777778	0	100	Free	Free	Free	Free	Free	Free									
A8	X-Symmetry	0	15.27777778	100	Free	Free	Free	Free	Free	Free									
A9	Y-Symmetry	13.47222222	0	125	Free	Free	Free	Free	Free	Free									
A10	X-Symmetry	0	13.47222222	125	Free	Free	Free	Free	Free	Free									
A11	Y-Symmetry	12.56944444	0	137.5	Free	Free	Free	Free	Free	Free									
A12	X-Symmetry	0	12.56944444	137.5	Free	Free	Free	Free	Free	Free									
A13	Y-Symmetry	11.66666667	0	150	Free	Free	Free	Free	Free	Free									
A14	X-Symmetry	0	11.66666667	150	Free	Free	Free	Free	Free	Free									
A15	Y-Symmetry	10.76388889	0	162.5	Free	Free	Free	Free	Free	Free									
A16	X-Symmetry	0	10.76388889	162.5	Free	Free	Free	Free	Free	Free									
A17	Y-Symmetry	9.861111111	0	175	Free	Free	Free	Free	Free	Free									
A18	X-Symmetry	0	9.861111111	175	Free	Free	Free	Free	Free	Free									
H1	XY-Symmetry	21.29627222	12.09855741	16.667	Free	Free	Free	Free	Free	Free									
H2	XY-Symmetry	12.09855741	21.29627222	16.667	Free	Free	Free	Free	Free	Free									
H3	Y-Symmetry	21.29627222	0	16.667	Free	Free	Free	Free	Free	Free									
H4	X-Symmetry	0	21.29627222	16.667	Free	Free	Free	Free	Free	Free									
H5	XY-Symmetry	19.49071667	11.09548704	41.667	Free	Free	Free	Free	Free	Free									
H6	XY-Symmetry	11.09548704	19.49071667	41.667	Free	Free	Free	Free	Free	Free									
H7	Y-Symmetry	19.49071667	0	41.667	Free	Free	Free	Free	Free	Free									
H8	X-Symmetry	0	19.49071667	41.667	Free	Free	Free	Free	Free	Free									

NOTES	
Types:	
1:	Built up Horiz. w/ A
2:	Built up Horiz. w/ M
A:	Typical A brace
X:	Typical X brace
Drop:	Use only for types 1 & 2
# Sections:	13

Legs

Site No.:	88019
Engineer:	MED
Date:	03/29/2014
Carrier:	Sprint Nextel

When inputting thickness values, include all decimal places.

Tower Section #	Section Elevations (ft)	Type of Shape ^[1]	Diameter or Length (in)	Thickness ^[2] (in)	F _y (ksi)
1	0.000-25.00	L	8	1.125	33
2	25.00-50.00	L	8	1.125	33
3	50.00-75.00	L	8	1	33
4	75.00-100.0	L	8	0.875	33
5	100.0-125.0	L	8	0.75	33
6	125.0-137.5	L	6	0.875	33
7	137.5-150.0	L	6	0.875	33
8	150.0-162.5	L	6	0.875	33
9	162.5-175.0	L	6	0.875	33
10	175.0-187.5	L	6	0.625	33
11	187.5-200.0	L	6	0.625	33
12	200.0-212.5	L	6	0.5	33
13	212.5-225.0	L	6	0.5	33

Notes:

^[1] Type of Leg Shape: **R** = Round or **P** = Bent Plate or **S** = Schifferized Angle. **L** = Even Leg

^[2] For Solid Round Leg Shapes Thickness Equals Zero.

^[3] Adjust for Bent Plate Leg Shapes.

Diagonals

Site No.:	88019
Engineer:	MED
Date:	03/29/2014
Carrier:	Sprint Nextel

When inputting thickness values, include all decimal places.

Tower Section #	Section Elevations (ft)	Type of Shape ^[1]	Diameter ^[2] (in)	Web Length ^[3] (in)	Flange Length ^[3] (in)	Thickness (in)	F _y (ksi)	Is Diag. Tension Only? (Y/N)
1	0.000-25.00	2L		3	3	0.25	33	
2	25.00-50.00	2L		3	3	0.25	33	
3	50.00-75.00	2L		2.5	3	0.3125	33	
4	75.00-100.0	2L		2.5	3	0.25	33	
5	100.0-125.0	2L		2.5	3	0.25	33	
6	125.0-137.5	2L		2.5	2.5	0.25	33	
7	137.5-150.0	2L		2.5	2.5	0.25	33	
8	150.0-162.5	2L		2.5	2.5	0.25	33	
9	162.5-175.0	2L		2.5	2.5	0.25	33	
10	175.0-187.5	L		4	3	0.25	33	
11	187.5-200.0	L		4	3	0.25	33	
12	200.0-212.5	L		3.5	3.5	0.25	33	
13	212.5-225.0	L		3.5	3.5	0.25	33	

Notes:

^[1] Type of Diagonal Shape: R = Round, L = Single-Angle or 2L = Double-Angle.

^[2] Applies to Pipes and Solid Round Shapes only. For Solid Round Shapes Thickness Equals Zero.

^[3] Applies to Single-Angle and Double-Angle Shapes only.

^[4] Applies to Double-Angle Shapes only.

^[5] Applies to Single-Angle Shapes only.

Horizontals

Site No.:	88019
Engineer:	MED
Date:	03/29/2014
Carrier:	Sprint Nextel

When inputting thickness values, include all decimal places.

Tower Section #	Section Elevations (ft)	Type of Shape ^[1]	Diameter ^[2] (in)	Web Length ^[3] (in)	Flange Length ^[3] (in)	Thickness (in)	F _y (ksi)	
1	0.000-25.00	2L		3.5	3	0.3125	33	
2	25.00-50.00	2L		3	3	0.3125	33	
3	50.00-75.00	2L		3.5	2.5	0.3125	33	
4	75.00-100.0	2L		3	2.5	0.25	33	
5	100.0-125.0	2L		3	2.5	0.25	33	
6	125.0-137.5	2L		2.5	2.5	0.25	33	
7	137.5-150.0	2L		2.5	2.5	0.25	33	
8	150.0-162.5	2L		2.5	2.5	0.25	33	
9	162.5-175.0	2L		2.5	2.5	0.25	33	
10	175.0-187.5	2L		3	2.5	0.25	33	
11	187.5-200.0	2L		3	2.5	0.25	33	
12	200.0-212.5	2L		3.5	3	0.3125	33	
13	212.5-225.0	C		8	11.5		33	

Notes:

^[1] Type of Horizontal Shape: **R** = Round, **L** = Single-Angle, **2L** = Double-Angle, **C** = Channel, **W** = W Shape

^[2] Applies to Pipes and Solid Round Shapes only. For Solid Round Shapes Thickness Equals Zero.

^[3] Applies to Single-Angle and Double-Angle Shapes only.

^[4] Applies to Double-Angle Shapes only.

^[5] Applies to Single-Angle Shapes only.

Built-up Diagonals

Site No.:	88019
Engineer:	MED
Date:	03/29/2014
Carrier:	Sprint Nextel

When inputting thickness values, include all decimal places.

Input diags. from left to center & from base section upward.

Tower Built-up Diag. #	Section Elevations (ft)	Type of Shape ^[1]	Diameter ^[2] (in)	Web Length ^[3] (in)	Flange Length ^[3] (in)	Thickness (in)	F _y (ksi)
1	0.000-25.00	2L		2.5	2	0.25	33
2	0.000-25.00	2L		2.5	2.5	0.25	33
3	0.000-25.00	2L		2.5	2.5	0.25	33
4	25.00-50.00	2L		2.5	2	0.25	33
5	25.00-50.00	2L		2.5	2	0.25	33
6	25.00-50.00	2L		2.5	2	0.25	33

Notes:

^[1] Type of Diagonal Shape: **R** = Round, **L** = Single-Angle or **2L** = Double-Angle.

^[2] Applies to Pipes and Solid Round Shapes only. For Solid Round Shapes Thickness Equals Zero.

^[3] Applies to Single-Angle and Double-Angle Shapes only.

^[4] Applies to Double-Angle Shapes only.

^[5] Applies to Single-Angle Shapes only.

Built-up Horizontals

Site No.:	88019
Engineer:	MED
Date:	03/29/2014
Carrier:	Sprint Nextel

When inputting thickness values, include all decimal places.

Tower Section #	Section Elevations (ft)	Type of Shape ^[1]	Diameter ^[2] (in)	Web Length ^[3] (in)	Flange Length ^[3] (in)	Thickness (in)	F _y (ksi)	Is Horiz. Tension Only? (Y/N)
1	0.000-25.00	2L		3.5	3.5	0.3125	33	
2	25.00-50.00	2L		3.5	3.5	0.3125	33	

Notes:

^[1] Type of Horizontal Shape: R = Round, L = Single-Angle or 2L = Double-Angle.

^[2] Applies to Pipes and Solid Round Shapes only. For Solid Round Shapes Thickness Equals Zero.

^[3] Applies to Single-Angle and Double-Angle Shapes only.

^[4] Applies to Double-Angle Shapes only.

^[5] Applies to Single-Angle Shapes only.

Coax & Dishes

Site No.:	88019
Engineer:	MED
Date:	03/29/14
Carrier:	Sprint Nextel

Dish Types		Joint Orientation	
S	Standard	XY	Y
R	Standard w/ Radome		
H	High Performance	90°	
G	Grid	X	P

Dish Elevation (ft)	Dish Dia. (ft)	Dish Angle (deg)	Dish Type	Joint Orientation

Description	From (ft)	To (ft)	Quantity	Shape	Width or Diameter (in)	Perimeter (in)	Unit Weight (lb/ft)	Part of Face Solidity Ratio (Yes/No)	Include in Wind Load (Yes/No)
US Immigration	5	205	1	Round	1.55	4.87	0.66	No	Yes
Sprint Nextel	5	195	3	Round	1.25	3.93	2.70	No	Yes
Sprint Nextel2	5	195	1	Round	0.88	2.76	0.14	No	Yes
Wave Guide 1	5	195	1	Flat	2	6.28	1.08	No	Yes
US Imm2	5	180	1	Round	1.25	3.93	0.54	No	Yes

Equipment Label	Attach Label	Equipment Property Set	EIA Antenna Orientation Angle (deg)

Coax	Dia. (in)	Weight(lb/ft)
1/4"	0.3	0.064
3/8"	0.44	0.084
1/2"	0.63	0.144
7/8"	1.11	0.544
EW90	1.32	0.32
1-1/4"	1.55	0.664
1-5/8"	1.98	1.08
EW63	2.01	0.51
EW52	2.25	0.59
Ladder	3	6
WC281	3.11	5.39

Foundation

Design Loads (Unfactored)

Compression/Leg:	238.50 k
Uplift/Leg:	158.10 k

Face Width @ Top of Pier (d_1):	3.50 ft
Face Width @ Bottom of Pier (d_2):	8.50 ft
Total Length of Pier (l):	9.50 ft
Height of Pedestal Above Ground (h):	0.50 ft
Width of Pad (W):	20.50 ft
Length of Pad (L):	20.50 ft
Thickness of Pad (t):	2.00 ft
Water Table Depth (w):	30 ft
Unit Weight of Concrete:	150.0 pcf
Unit Weight of Soil (Above Water Table):	110.0 pcf
Unit Weight of Soil (Below Water Table):	55.0 pcf
Friction Angle of Uplift (A):	20°
Allowable Compressive Bearing Pressure:	4000 psf

Volume Pier (Total):	361.79	ft ³
Volume Pad (Total):	840.50	ft ³
Volume Soil (Total):	4736.93	ft ³
Volume Pier (Buoyant):	0.00	ft ³
Volume Pad (Buoyant):	0.00	ft ³
Volume Soil (Buoyant):	0.00	ft ³
Weight Pier:	54.27	k
Weight Pad:	126.08	k
Weight Soil:	521.06	k

Uplift Check

TIA Case 1: $\frac{\text{Wt. Soil} + \text{Wt. Concrete}}{2}$

TIA Case 2: $\frac{\text{Wt. Soil} + \text{Wt. Concrete}}{2.0 \quad 2}$

	Allowable Uplift (k)	Ratio	Result
TIA Case 1:	350.70	0.45	OK
TIA Case 2:	350.70	0.45	OK

Axial Check

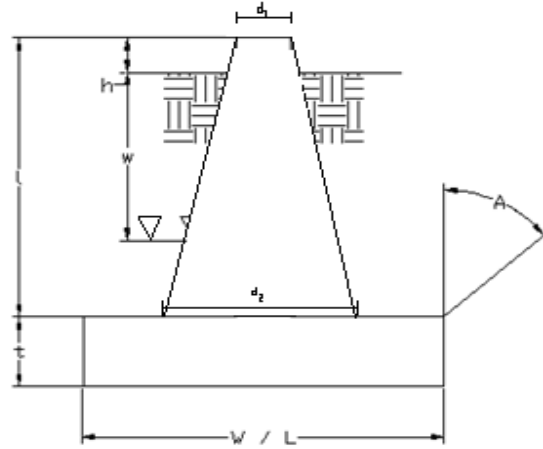
Allowable Axial: $\text{Allowable Bearing Pressure} * W * L$

	Allowable Axial (k)	Ratio	Result
	1681.00	0.14	OK

Anchor Bolt Check

Bolt Description	Allowable Uplift (k)	Ratio	Result
(4) 2 1/2" A36	375.81	0.42	OK

Site No.:	88019
Engineer:	MED
Date:	03/29/14
Carrier:	Sprint Nextel



*** Foundation satisfies a factor of safety of 2.0 per State of Conn. Requirements***

Sprint



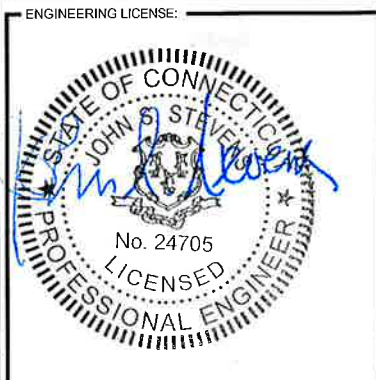
AMERICAN TOWER CORPORATION

PROJECT: 2.5 EQUIPMENT DEPLOYMENT
 SITE NAME: WINSTED - PLATT HILL RD
 SITE CASCADE: CT73XC001
 SITE NUMBER: 88019
 SITE ADDRESS: 428 PLATT HILL ROAD
 WINSTED, CT 06098
 SITE TYPE: SELF SUPPORT TOWER
 MARKET: SOUTHERN CONNECTICUT

PLANS PREPARED FOR:
Sprint
 6580 Sprint Parkway
 Overland Park, Kansas 66251

PLANS PREPARED BY:
INFINIGY Design. Build. Deliver.
 1033 Watervliet Shaker Rd
 Albany, NY 12205
 Office # (518) 690-0790
 Fax # (518) 690-0793
 JOB NUMBER 340-000

MLA PARTNER:
AMERICAN TOWER CORPORATION
 116 HUNTINGTON AVENUE, 11TH FLOOR
 BOSTON, MA 02116



DRAWING NOTICE:
 THESE DOCUMENTS ARE CONFIDENTIAL AND ARE THE SOLE PROPERTY OF SPRINT AND MAY NOT BE REPRODUCED, DISSEMINATED OR REDISTRIBUTED WITHOUT THE EXPRESS WRITTEN CONSENT OF SPRINT.

REVISIONS:	DESCRIPTION	DATE	BY	REV
REVISED PER COMMENT		3/13/14	MAP	B
ISSUED FOR REVIEW		1/28/14	AHS	A

SITE NAME:
WINSTED - PLATT HILL RD

SITE CASCADE:
CT73XC001

SITE ADDRESS:
 428 PLATT HILL ROAD
 WINSTED, CT 06098

SHEET DESCRIPTION:
TITLE SHEET & PROJECT DATA

SHEET NUMBER:
T-1

SITE INFORMATION	AREA MAP	PROJECT DESCRIPTION	DRAWING INDEX																																										
<p>TOWER OWNER: AMERICAN TOWER CORP. P.O. BOX 723597 ATLANTA, GA 31139-1139</p> <p>LATITUDE (NAD83): 41° 53' 53.8398" N 41.898289°</p> <p>LONGITUDE (NAD83): 73° 6' 57.6396" W -73.116011°</p> <p>COUNTY: LITCHFIELD</p> <p>ZONING JURISDICTION: WINSTED TOWNSHIP</p> <p>ZONING DISTRICT: RU-3</p> <p>POWER COMPANY: CONNECTICUT LIGHT & POWER (800) 286-2000</p> <p>AAV PROVIDER: AT&T (800) 246-2020</p> <p>SPRINT CM: GARY WOOD (860) 940-9168 gary.wood@sprint.com</p> <p>AMERICAN TOWER CM: JON RODGERS OFFICE: (781) 926-7855 MOBILE: (617) 839-5143 jon.rodgers@americantower.com</p>		<p>SPRINT PROPOSES TO MODIFY AN EXISTING UNMANNED TELECOMMUNICATIONS FACILITY.</p> <ul style="list-style-type: none"> INSTALL 2.5 EQUIPMENT IN EXISTING N.V. MM BTS CABINET INSTALL (3) PANEL ANTENNAS INSTALL (3) RRU'S TO TOWER INSTALL (27) JUMPER CABLES INSTALL (1) FIBER CABLE INSTALL (4) NEW BATTERIES IN EXISTING BBU CABINET <p>THESE PLANS HAVE BEEN DEVELOPED FOR THE MODIFICATION OF AN EXISTING UNMANNED TELECOMMUNICATIONS FACILITY OWNED OR LEASED BY SPRINT IN ACCORDANCE WITH THE SCOPE OF WORK PROVIDED BY SPRINT. INFINIGY HAS INCORPORATED THIS SCOPE OF WORK IN THE PLANS. THESE PLANS ARE NOT FOR CONSTRUCTION UNLESS ACCOMPANIED BY A PASSING STRUCTURAL STABILITY ANALYSIS PREPARED BY A LICENSED STRUCTURAL ENGINEER. STRUCTURAL ANALYSIS MUST INCLUDE BOTH TOWER AND MOUNT.</p>	<table border="1"> <thead> <tr> <th>SHEET NO.</th> <th>SHEET TITLE</th> <th>REV.</th> </tr> </thead> <tbody> <tr> <td>T-1</td> <td>TITLE SHEET & PROJECT DATA</td> <td>B</td> </tr> <tr> <td>SP-1</td> <td>SPRINT SPECIFICATIONS</td> <td>B</td> </tr> <tr> <td>SP-2</td> <td>SPRINT SPECIFICATIONS</td> <td>B</td> </tr> <tr> <td>SP-3</td> <td>SPRINT SPECIFICATIONS</td> <td>B</td> </tr> <tr> <td>A-1</td> <td>SITE PLAN</td> <td>B</td> </tr> <tr> <td>A-2</td> <td>TOWER ELEVATION & CABLE PLAN</td> <td>B</td> </tr> <tr> <td>A-3</td> <td>ANTENNA LAYOUT & MOUNTING DETAILS</td> <td>B</td> </tr> <tr> <td>A-4</td> <td>COLOR CODING & NOTES</td> <td>B</td> </tr> <tr> <td>A-5</td> <td>EQUIPMENT & MOUNTING DETAILS</td> <td>B</td> </tr> <tr> <td>A-6</td> <td>CIVIL DETAILS</td> <td>B</td> </tr> <tr> <td>A-7</td> <td>PLUMBING DIAGRAM</td> <td>B</td> </tr> <tr> <td>E-1</td> <td>ELECTRICAL & GROUNDING PLAN</td> <td>B</td> </tr> <tr> <td>E-2</td> <td>ELECTRICAL & GROUNDING DETAILS</td> <td>B</td> </tr> </tbody> </table>	SHEET NO.	SHEET TITLE	REV.	T-1	TITLE SHEET & PROJECT DATA	B	SP-1	SPRINT SPECIFICATIONS	B	SP-2	SPRINT SPECIFICATIONS	B	SP-3	SPRINT SPECIFICATIONS	B	A-1	SITE PLAN	B	A-2	TOWER ELEVATION & CABLE PLAN	B	A-3	ANTENNA LAYOUT & MOUNTING DETAILS	B	A-4	COLOR CODING & NOTES	B	A-5	EQUIPMENT & MOUNTING DETAILS	B	A-6	CIVIL DETAILS	B	A-7	PLUMBING DIAGRAM	B	E-1	ELECTRICAL & GROUNDING PLAN	B	E-2	ELECTRICAL & GROUNDING DETAILS	B
SHEET NO.	SHEET TITLE	REV.																																											
T-1	TITLE SHEET & PROJECT DATA	B																																											
SP-1	SPRINT SPECIFICATIONS	B																																											
SP-2	SPRINT SPECIFICATIONS	B																																											
SP-3	SPRINT SPECIFICATIONS	B																																											
A-1	SITE PLAN	B																																											
A-2	TOWER ELEVATION & CABLE PLAN	B																																											
A-3	ANTENNA LAYOUT & MOUNTING DETAILS	B																																											
A-4	COLOR CODING & NOTES	B																																											
A-5	EQUIPMENT & MOUNTING DETAILS	B																																											
A-6	CIVIL DETAILS	B																																											
A-7	PLUMBING DIAGRAM	B																																											
E-1	ELECTRICAL & GROUNDING PLAN	B																																											
E-2	ELECTRICAL & GROUNDING DETAILS	B																																											
	<p>LOCATION MAP</p>	<p>APPLICABLE CODES</p> <p>ALL WORK SHALL BE PERFORMED AND MATERIALS INSTALL IN ACCORDANCE WITH THE CURRENT EDITIONS OF THE FOLLOWING CODES AS ADOPTED BY THE LOCAL GOVERNING AUTHORITIES. NOTHING IN THESE PLANS IS TO BE CONSTRUED TO PERMIT WORK NOT CONFORMING TO THESE CODES.</p> <ol style="list-style-type: none"> INTERNATIONAL BUILDING CODE (2012 IBC) TIA-EIA-222-F OR LATEST EDITION NFPA 780 - LIGHTNING PROTECTION CODE 2011 NATIONAL ELECTRIC CODE OR LATEST EDITION ANY OTHER NATIONAL OR LOCAL APPLICABLE CODES, MOST RECENT EDITIONS CT BUILDING CODE LOCAL BUILDING CODE CITY/COUNTY ORDINANCES 																																											



THESE OUTLINE SPECIFICATIONS IN CONJUNCTION WITH THE SPRINT STANDARD CONSTRUCTION SPECIFICATIONS, INCLUDING CONTRACT DOCUMENTS AND THE CONSTRUCTION DRAWINGS DESCRIBE THE WORK TO BE PERFORMED BY THE CONTRACTOR.

SECTION 01 100 - SCOPE OF WORK

PART 1 - GENERAL

1.1 THE WORK: THESE STANDARD CONSTRUCTION SPECIFICATIONS IN CONJUNCTION WITH THE SPRINT CONSTRUCTION STANDARDS FOR WIRELESS SITES, CONTRACT DOCUMENTS AND THE CONSTRUCTION DRAWINGS DESCRIBE THE WORK TO BE PERFORMED BY THE CONTRACTOR.

1.2 RELATED DOCUMENTS:

- A. THE REQUIREMENTS OF THIS SECTION APPLY TO ALL SECTIONS IN THIS SPECIFICATION.
B. SPRINT "STANDARD CONSTRUCTION DETAILS FOR WIRELESS SITES" ARE INCLUDED IN AND MADE A PART OF THESE SPECIFICATIONS HERewith.

1.3 PRECEDENCE: SHOULD CONFLICTS OCCUR BETWEEN THE STANDARD CONSTRUCTION SPECIFICATIONS FOR WIRELESS SITES INCLUDING THE STANDARD CONSTRUCTION DETAILS FOR WIRELESS SITES AND THE CONSTRUCTION DRAWINGS, INFORMATION ON THE CONSTRUCTION DRAWINGS SHALL TAKE PRECEDENCE. NOTIFY SPRINT CONSTRUCTION MANAGER IF THIS OCCURS.

1.4 NATIONALLY RECOGNIZED CODES AND STANDARDS:

- A. THE WORK SHALL COMPLY WITH APPLICABLE NATIONAL AND LOCAL CODES AND STANDARDS, LATEST EDITION, AND PORTIONS THEREOF, INCLUDED BUT NOT LIMITED TO THE FOLLOWING:

1. GR-63-CORE NEBS REQUIREMENTS: PHYSICAL PROTECTION
5. GR-78-CORE GENERIC REQUIREMENTS FOR THE PHYSICAL DESIGN AND MANUFACTURE OF TELECOMMUNICATIONS EQUIPMENT.
3. GR-1089 CORE, ELECTROMAGNETIC COMPATIBILITY AND ELECTRICAL SAFETY -GENERIC CRITERIA FOR NETWORK TELECOMMUNICATIONS EQUIPMENT.
4. NATIONAL FIRE PROTECTION ASSOCIATION CODES AND STANDARDS (NFPA) INCLUDING NFPA 70 (NATIONAL ELECTRICAL CODE - "NEC") AND NFPA 101 (LIFE SAFETY CODE).
5. AMERICAN SOCIETY FOR TESTING OF MATERIALS (ASTM)
6. INSTITUTE OF ELECTRONIC AND ELECTRICAL ENGINEERS (IEEE)
7. AMERICAN CONCRETE INSTITUTE (ACI)
8. AMERICAN WIRE PRODUCERS ASSOCIATION (AWPA)
9. CONCRETE REINFORCING STEEL INSTITUTE (CRSI)
10. AMERICAN ASSOCIATION OF STATE HIGHWAY AND TRANSPORTATION OFFICIALS (AASHTO)
11. PORTLAND CEMENT ASSOCIATION (PCA)
12. NATIONAL CONCRETE MASONRY ASSOCIATION (NCMA)
13. BRICK INDUSTRY ASSOCIATION (BIA)
14. AMERICAN WELDING SOCIETY (AWS)
15. NATIONAL ROOFING CONTRACTORS ASSOCIATION (NRCA)
16. SHEET METAL AND AIR CONDITIONING CONTRACTORS' NATIONAL ASSOCIATION (SMACNA)
17. DOOR AND HARDWARE INSTITUTE (DHI)
18. OCCUPATIONAL SAFETY AND HEALTH ACT (OSHA)
19. APPLICABLE BUILDING CODES INCLUDING UNIFORM BUILDING CODE, SOUTHERN BUILDING CODE, BOCA, AND THE INTERNATIONAL BUILDING CODE.

1.5 DEFINITIONS:

- A. WORK: THE SUM OF TASKS AND RESPONSIBILITIES IDENTIFIED IN THE CONTRACT DOCUMENTS.
B. COMPANY: SPRINT CORPORATION
C. ENGINEER: SYNONYMOUS WITH ARCHITECT & ENGINEER AND "A&E". THE DESIGN PROFESSIONAL HAVING PROFESSIONAL RESPONSIBILITY FOR DESIGN OF THE PROJECT.
D. CONTRACTOR: CONSTRUCTION CONTRACTOR; CONSTRUCTION VENDOR; INDIVIDUAL OR ENTITY WHO AFTER EXECUTION OF A CONTRACT IS BOUND TO ACCOMPLISH THE WORK.
E. THIRD PARTY VENDOR OR AGENCY: A VENDOR OR AGENCY ENGAGED SEPARATELY BY THE COMPANY, A&E, OR CONTRACTOR TO PROVIDE MATERIALS OR TO ACCOMPLISH SPECIFIC TASKS RELATED TO BUT NOT INCLUDED IN THE WORK.
F. OFCI: OWNER FURNISHED, CONTRACTOR INSTALLED EQUIPMENT.
G. CONSTRUCTION MANAGER - ALL PROJECTS RELATED COMMUNICATION TO FLOW THROUGH SPRINT REPRESENTATIVE IN CHARGE OF PROJECT...

1.6 SITE FAMILIARITY: CONTRACTOR SHALL BE RESPONSIBLE FOR FAMILIARIZING HIMSELF WITH ALL CONTRACT DOCUMENTS, FIELD CONDITIONS AND DIMENSIONS PRIOR TO PROCEEDING WITH CONSTRUCTION. ANY DISCREPANCIES SHALL BE BROUGHT TO THE ATTENTION OF THE SPRINT CONSTRUCTION MANAGER PRIOR TO THE COMMENCEMENT OF WORK. NO COMPENSATION WILL BE AWARDED BASED ON CLAIM OF LACK OF KNOWLEDGE OR FIELD CONDITIONS.

1.7 POINT OF CONTACT: COMMUNICATION BETWEEN SPRINT AND THE CONTRACTOR SHALL FLOW THROUGH THE SINGLE SPRINT CONSTRUCTION MANAGER APPOINTED TO MANAGE THE PROJECT FOR SPRINT.

1.8 ON-SITE SUPERVISION: THE CONTRACTOR SHALL SUPERVISE AND DIRECT THE WORK AND SHALL BE RESPONSIBLE FOR CONSTRUCTION MEANS, METHODS, TECHNIQUES, SEQUENCES, AND PROCEDURES IN ACCORDANCE WITH THE CONTRACT DOCUMENTS. THE CONTRACTOR SHALL EMPLOY A COMPETENT SUPERINTENDENT WHO SHALL BE IN ATTENDANCE AT THE SITE AT ALL TIMES DURING PERFORMANCE OF THE WORK.

1.9 DRAWINGS, SPECIFICATIONS AND DETAILS REQUIRED AT JOBSITE: THE CONSTRUCTION CONTRACTOR SHALL MAINTAIN A FULL SET OF THE CONSTRUCTION DRAWINGS, STANDARD CONSTRUCTION DETAILS FOR WIRELESS SITES AND THE STANDARD CONSTRUCTION SPECIFICATIONS FOR WIRELESS SITES AT THE JOBSITE FROM MOBILIZATION THROUGH CONSTRUCTION COMPLETION.

A. THE JOBSITE DRAWINGS, SPECIFICATIONS AND DETAILS SHALL BE CLEARLY MARKED DAILY IN RED PENCIL WITH ANY CHANGES IN CONSTRUCTION OVER WHAT IS DEPICTED IN THE DOCUMENTS. AT CONSTRUCTION COMPLETION, THIS JOBSITE MARKUP SET SHALL BE DELIVERED TO THE COMPANY OR COMPANY'S DESIGNATED REPRESENTATIVE TO BE FORWARDED TO THE COMPANY'S A&E VENDOR FOR PRODUCTION OF "AS-BUILT" DRAWINGS.

B. DETAILS ARE INTENDED TO SHOW DESIGN INTENT. MODIFICATIONS MAY BE REQUIRED TO SUIT JOB DIMENSIONS OR CONDITIONS, AND SUCH MODIFICATIONS SHALL BE INCLUDED AS PART OF THE WORK. CONTRACTOR SHALL NOTIFY SPRINT CONSTRUCTION MANAGER OF ANY VARIATIONS PRIOR TO PROCEEDING WITH THE WORK.

C. DIMENSIONS SHOWN ARE TO FINISH SURFACES UNLESS NOTED OTHERWISE. SPACING BETWEEN EQUIPMENT IS THE REQUIRED CLEARANCE. SHOULD THERE BE ANY QUESTIONS REGARDING THE CONTRACT DOCUMENTS, EXISTING CONDITIONS AND/OR DESIGN INTENT, THE CONTRACTOR SHALL BE RESPONSIBLE FOR OBTAINING A CLARIFICATION FROM THE SPRINT CONSTRUCTION MANAGER PRIOR TO PROCEEDING WITH THE WORK.

1.10 USE OF JOB SITE: THE CONTRACTOR SHALL CONFINE ALL CONSTRUCTION AND RELATED OPERATIONS INCLUDING STAGING AND STORAGE OF MATERIALS AND EQUIPMENT, PARKING, TEMPORARY FACILITIES, AND WASTE STORAGE TO THE LEASE PARCEL UNLESS OTHERWISE PERMITTED BY THE CONTRACT DOCUMENTS.

1.11 UTILITIES SERVICES: WHERE NECESSARY TO CUT EXISTING PIPES, ELECTRICAL WIRES, CONDUITS, CABLES, ETC., OF UTILITY SERVICES, OR OF FIRE PROTECTION OR COMMUNICATIONS SYSTEMS, THEY SHALL BE CUT AND CAPPED AT SUITABLE PLACES OR WHERE SHOWN. ALL SUCH ACTIONS SHALL BE COORDINATED WITH THE UTILITY COMPANY INVOLVED:

1.12 PERMITS / FEES: WHEN REQUIRED THAT A PERMIT OR CONNECTION FEE BE PAID TO A PUBLIC UTILITY PROVIDER FOR NEW SERVICE TO THE CONSTRUCTION PROJECT, PAYMENT OF SUCH FEE SHALL BE THE RESPONSIBILITY OF THE CONTRACTOR.

1.13 CONTRACTOR SHALL TAKE ALL MEASURES AND PROVIDE ALL MATERIAL NECESSARY FOR PROTECTING EXISTING EQUIPMENT AND PROPERTY.

1.14 METHODS OF PROCEDURE (MOPS) FOR CONSTRUCTION: CONTRACTOR SHALL PERFORM WORK AS DESCRIBED IN THE FOLLOWING INSTALLATION AND COMMISSIONING MOPS.

NOTE: IN SHORT-FORM SPECIFICATIONS ON THE DRAWINGS, A/E TO INSERT LIST OF APPLICABLE MOPS INCLUDING EN-2012-001, EN-2013-002, EL-0568, AND TS-0193

1.15 USE OF ELECTRONIC PROJECT MANAGEMENT SYSTEMS:

PART 2 - PRODUCTS (NOT USED)

PART 3 - EXECUTION

3.1 TEMPORARY UTILITIES AND FACILITIES: THE CONTRACTOR SHALL BE RESPONSIBLE FOR ALL TEMPORARY UTILITIES AND FACILITIES NECESSARY EXCEPT AS OTHERWISE INDICATED IN THE CONSTRUCTION DOCUMENTS. TEMPORARY UTILITIES AND FACILITIES INCLUDE POTABLE WATER, HEAT, HVAC, ELECTRICITY, SANITARY FACILITIES, WASTE DISPOSAL FACILITIES, AND TELEPHONE/COMMUNICATION SERVICES. PROVIDE TEMPORARY UTILITIES AND FACILITIES IN ACCORDANCE WITH OSHA AND THE AUTHORITY HAVING JURISDICTION. CONTRACTOR MAY UTILIZE THE COMPANY ELECTRICAL SERVICE IN THE COMPLETION OF THE WORK WHEN IT BECOMES AVAILABLE. USE OF THE LESSORS OR SITE OWNER'S UTILITIES OR FACILITIES IS EXPRESSLY FORBIDDEN EXCEPT AS OTHERWISE ALLOWED IN THE CONTRACT DOCUMENTS.

3.2 ACCESS TO WORK: THE CONTRACTOR SHALL PROVIDE ACCESS TO THE JOB SITE FOR AUTHORIZED COMPANY PERSONNEL AND AUTHORIZED REPRESENTATIVES OF THE ARCHITECT/ENGINEER DURING ALL PHASES OF THE WORK.

3.3 TESTING: REQUIREMENTS FOR TESTING BY THIS CONTRACTOR SHALL BE AS INDICATED HERewith, ON THE CONSTRUCTION DRAWINGS, AND IN THE INDIVIDUAL SECTIONS OF THESE SPECIFICATIONS. SHOULD COMPANY CHOOSE TO ENGAGE ANY THIRD-PARTY TO CONDUCT ADDITIONAL TESTING, THE CONTRACTOR SHALL COOPERATE WITH AND PROVIDE A WORK AREA FOR COMPANY'S TEST AGENCY.

3.4 DIMENSIONS: VERIFY DIMENSIONS INDICATED ON DRAWINGS WITH FIELD DIMENSIONS BEFORE FABRICATION OR ORDERING OF MATERIALS. DO NOT SCALE DRAWINGS.

3.5 EXISTING CONDITIONS: NOTIFY THE SPRINT CONSTRUCTION MANAGER OF EXISTING CONDITIONS DIFFERING FROM THOSE INDICATED ON THE DRAWINGS. DO NOT REMOVE OR ALTER STRUCTURAL COMPONENTS WITHOUT PRIOR WRITTEN APPROVAL FROM THE ARCHITECT AND ENGINEER.

SECTION 01 200 - COMPANY FURNISHED MATERIAL AND EQUIPMENT

PART 1 - GENERAL

1.1 THE WORK: THESE STANDARD CONSTRUCTION SPECIFICATIONS IN CONJUNCTION WITH THE OTHER CONTRACT DOCUMENTS AND THE CONSTRUCTION DRAWINGS DESCRIBE THE WORK TO BE PERFORMED BY THE CONTRACTOR.

1.2 RELATED DOCUMENTS:

- A. THE REQUIREMENTS OF THIS SECTION APPLY TO ALL SECTIONS IN THIS SPECIFICATION.
B. SPRINT "STANDARD CONSTRUCTION DETAILS FOR WIRELESS SITES" ARE INCLUDED IN AND MADE A PART OF THESE SPECIFICATIONS HERewith.

PART 2 - PRODUCTS (NOT USED)

PART 3 - EXECUTION

3.1 RECEIPT OF MATERIAL AND EQUIPMENT:

- A. A COMPANY FURNISHED MATERIAL AND EQUIPMENT IS IDENTIFIED ON THE RF DATA SHEET IN THE CONSTRUCTION DOCUMENTS.
B. THE CONTRACTOR IS RESPONSIBLE FOR SPRINT PROVIDED MATERIAL AND EQUIPMENT AND UPON RECEIPT SHALL:
1. ACCEPT DELIVERIES AS SHIPPED AND TAKE RECEIPT.
 2. VERIFY COMPLETENESS AND CONDITION OF ALL DELIVERIES.
 3. TAKE RESPONSIBILITY FOR EQUIPMENT AND PROVIDE INSURANCE PROTECTION AS REQUIRED IN AGREEMENT.
 4. RECORD ANY DEFECTS OR DAMAGES AND WITHIN TWENTY-FOUR HOURS AFTER RECEIPT, REPORT TO SPRINT OR ITS DESIGNATED PROJECT REPRESENTATIVE OF SUCH.
 5. PROVIDE SECURE AND NECESSARY WEATHER PROTECTED WAREHOUSING.
 6. COORDINATE SAFE AND SECURE TRANSPORTATION OF MATERIAL AND EQUIPMENT, DELIVERING AND OFF-LOADING FROM CONTRACTOR'S WAREHOUSE TO SITE.

3.2 DELIVERABLES:

- A. COMPLETE SHIPPING AND RECEIPT DOCUMENTATION IN ACCORDANCE WITH COMPANY PRACTICE.
B. IF APPLICABLE, COMPLETE LOST/STOLEN/DAMAGED DOCUMENTATION REPORT AS NECESSARY IN ACCORDANCE WITH COMPANY PRACTICE, AND AS DIRECTED BY COMPANY.
C. UPLOAD DOCUMENTATION INTO SPRINT SITE MANAGEMENT SYSTEM (SMS) AND/OR PROVIDE HARD COPY DOCUMENTATION AS REQUESTED.

SECTION 01 300 - CELL SITE CONSTRUCTION CO.

PART 1 - GENERAL

1.1 THE WORK: THESE STANDARD CONSTRUCTION SPECIFICATIONS IN CONJUNCTION WITH THE OTHER CONTRACT DOCUMENTS AND THE CONSTRUCTION DRAWINGS DESCRIBE THE WORK TO BE PERFORMED BY THE CONTRACTOR.

1.2 RELATED DOCUMENTS:

- A. THE REQUIREMENTS OF THIS SECTION APPLY TO ALL SECTIONS IN THIS SPECIFICATION.
B. SPRINT "STANDARD CONSTRUCTION DETAILS FOR WIRELESS SITES" ARE INCLUDED IN AND MADE A PART OF THESE SPECIFICATIONS HERewith.

1.3 NOTICE TO PROCEED

- A. NO WORK SHALL COMMENCE PRIOR TO COMPANY'S WRITTEN NOTICE TO PROCEED AND THE ISSUANCE OF THE WORK ORDER.
B. UPON RECEIVING NOTICE TO PROCEED, CONTRACTOR SHALL FULLY PERFORM ALL WORK NECESSARY TO PROVIDE SPRINT WITH AN OPERATIONAL WIRELESS FACILITY.

PART 2 - PRODUCTS (NOT USED)

PART 3 - EXECUTION

3.1 FUNCTIONAL REQUIREMENTS:

- A. THE ACTIVITIES DESCRIBED IN THIS PARAGRAPH REPRESENT MINIMUM ACTIONS AND PROCESSES REQUIRED TO SUCCESSFULLY COMPLETE THE WORK. THE ACTIVITIES DESCRIBED ARE NOT EXHAUSTIVE, AND CONTRACTOR SHALL TAKE ANY AND ALL ACTIONS AS NECESSARY TO SUCCESSFULLY COMPLETE THE CONSTRUCTION OF A FULLY FUNCTIONING WIRELESS FACILITY AT THE SITE IN ACCORDANCE WITH COMPANY PROCESSES.
B. SUBMIT SPECIFIC DOCUMENTATION AS INDICATED HEREIN, AND OBTAIN REQUIRED APPROVALS WHILE THE WORK IS BEING PERFORMED.
C. MANAGE AND CONDUCT ALL FIELD CONSTRUCTION SERVICE RELATED ACTIVITIES
D. PROVIDE CONSTRUCTION ACTIVITIES TO THE EXTENT REQUIRED BY THE CONTRACT DOCUMENTS, INCLUDING BUT NOT LIMITED TO THE FOLLOWING:

PLANS PREPARED FOR:

Sprint
6580 Sprint Parkway
Overland Park, Kansas 66251

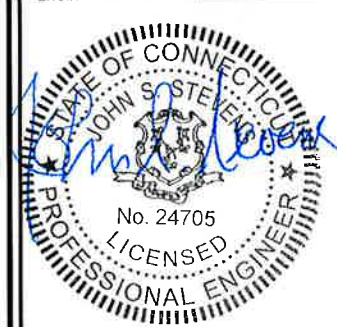
PLANS PREPARED BY:

INFINIGY Design.
Build.
Deliver.
1033 Watervliet Shaker Rd
Albany, NY 12205
Office # (518) 690-0790
Fax # (518) 690-0793
JOB NUMBER 340-000

MLA PARTNER:

**AMERICAN
TOWER**
CORPORATION
116 HUNTINGTON AVENUE, 11TH FLOOR
BOSTON, MA 02116

ENGINEERING LICENSE:



DRAWING NOTICE:

THESE DOCUMENTS ARE CONFIDENTIAL AND ARE THE SOLE PROPERTY OF SPRINT AND MAY NOT BE REPRODUCED, DISSEMINATED OR REDISTRIBUTED WITHOUT THE EXPRESS WRITTEN CONSENT OF SPRINT.

REVISIONS:

DESCRIPTION	DATE	BY	REV

SITE NAME:

**WINSTED -
PLATT HILL RD**

SITE CASCADE:

CT73XC001

SITE ADDRESS:

**428 PLATT HILL ROAD
WINSTED, CT 06098**

SHEET DESCRIPTION:

SPRINT SPECIFICATIONS

SHEET NUMBER:

SP-1

CONTINUE FROM SP-1

1. PERFORM ANY REQUIRED SITE ENVIRONMENTAL MITIGATION.
 2. PREPARE GROUND SITES; PROVIDE DE-GRUBBING; AND ROUGH AND FINAL GRADING, AND COMPOUND SURFACE TREATMENTS.
 3. MANAGE AND CONDUCT ALL ACTIVITIES FOR INSTALLATION OF UTILITIES INCLUDING ELECTRICAL AND TELCO BACKHAUL.
 4. INSTALL UNDERGROUND FACILITIES INCLUDING UNDERGROUND POWER AND COMMUNICATIONS CONDUITS, AND UNDERGROUND GROUNDING SYSTEM.
 5. INSTALL ABOVE GROUND GROUNDING SYSTEMS.
 6. PROVIDE NEW HVAC INSTALLATIONS AND MODIFICATIONS.
 7. INSTALL "H-FRAMES", CABINETS AND SHELTERS AS INDICATED.
 8. INSTALL ROADS, ACCESS WAYS, CURBS AND DRAINS AS INDICATED.
 9. ACCOMPLISH REQUIRED MODIFICATION OF EXISTING FACILITIES.
 10. PROVIDE ANTENNA SUPPORT STRUCTURE FOUNDATIONS.
 11. PROVIDE SLABS AND EQUIPMENT PLATFORMS.
 12. INSTALL COMPOUND FENCING, SIGHT SHIELDING, LANDSCAPING AND ACCESS BARRIERS.
 13. PERFORM INSPECTION AND MATERIAL TESTING AS REQUIRED HEREINAFTER.
 14. CONDUCT SITE RESISTANCE TO EARTH TESTING AS REQUIRED HEREINAFTER.
 15. INSTALL FIXED GENERATOR SETS AND OTHER STANDBY POWER SOLUTIONS.
 16. INSTALL TOWERS, ANTENNA SUPPORT STRUCTURES AND PLATFORMS ON EXISTING TOWERS AS REQUIRED.
 17. INSTALL CELL SITE RADIOS, MICROWAVE, GPS, COAXIAL MAINLINE, ANTENNAS, CROSS BAND COUPLERS, TOWER TOP AMPLIFIERS, LOW NOISE AMPLIFIERS AND RELATED EQUIPMENT.
 18. PERFORM, DOCUMENT, AND CLOSE OUT ANY CONSTRUCTION CONTROL DOCUMENTS THAT MAY BE REQUIRED BY GOVERNMENT AGENCIES AND LANDLORDS.
 19. PERFORM ANTENNA AND COAX SWEEP TESTING AND MAKE ANY AND ALL NECESSARY CORRECTIONS.
 20. REMAIN ON SITE MOBILIZED THROUGHOUT HAND-OFF AND INTEGRATION TO ASSIST AS NEEDED UNTIL SITE IS DEEMED SUBSTANTIALLY COMPLETE AND PLACED "ON AIR."
- 3.2 GENERAL REQUIREMENTS FOR CIVIL CONSTRUCTION:
- A. CONTRACTOR SHALL KEEP THE SITE FREE FROM ACCUMULATING WASTE MATERIAL, DEBRIS, AND TRASH. AT THE COMPLETION OF THE WORK, CONTRACTOR SHALL REMOVE FROM THE SITE ALL REMAINING RUBBISH, IMPLEMENTS, TEMPORARY FACILITIES, AND SURPLUS MATERIALS.
 - B. EQUIPMENT ROOMS SHALL AT ALL TIMES BE MAINTAINED "BROOM CLEAN" AND CLEAR OF DEBRIS.
 - C. CONTRACTOR SHALL TAKE ALL REASONABLE PRECAUTIONS TO DISCOVER AND LOCATE ANY HAZARDOUS CONDITION.
 1. IN THE EVENT CONTRACTOR ENCOUNTERS ANY HAZARDOUS CONDITION WHICH HAS NOT BEEN ABATED OR OTHERWISE MITIGATED, CONTRACTOR AND ALL OTHER PERSONS SHALL IMMEDIATELY STOP WORK IN THE AFFECTED AREA AND NOTIFY COMPANY IN WRITING. THE WORK IN THE AFFECTED AREA SHALL NOT BE RESUMED EXCEPT BY WRITTEN NOTIFICATION BY COMPANY.
 2. CONTRACTOR AGREES TO USE CARE WHILE ON THE SITE AND SHALL NOT TAKE ANY ACTION THAT WILL OR MAY RESULT IN OR CAUSE THE HAZARDOUS CONDITION TO BE FURTHER RELEASED IN THE ENVIRONMENT, OR TO FURTHER EXPOSE INDIVIDUALS TO THE HAZARD.
 - D. CONTRACTOR'S ACTIVITIES SHALL BE RESTRICTED TO THE PROJECT LIMITS. SHOULD AREAS OUTSIDE THE PROJECT LIMITS BE AFFECTED BY CONTRACTOR'S ACTIVITIES, CONTRACTOR SHALL IMMEDIATELY RETURN THEM TO ORIGINAL CONDITION.
 - E. CONDUCT TESTING AS REQUIRED HEREIN.
- 3.3 DELIVERABLES:
- A. CONTRACTOR SHALL REVIEW, APPROVE, AND SUBMIT TO SPRINT SHOP DRAWINGS, PRODUCT DATA, SAMPLES, AND SIMILAR SUBMITTALS AS REQUIRED HEREINAFTER.
 - B. PROVIDE DOCUMENTATION INCLUDING, BUT NOT LIMITED TO, THE FOLLOWING. DOCUMENTATION SHALL BE FORWARDED IN ORIGINAL FORMAT AND/OR UPLOADED INTO SMS.
 1. ALL CORRESPONDENCE AND PRELIMINARY CONSTRUCTION REPORTS.
 2. PROJECT PROGRESS REPORTS.
 3. CIVIL CONSTRUCTION START DATE (POPULATE FIELD IN SMS AND/OR FORWARD NOTIFICATION).
 4. ELECTRICAL SERVICE COMPLETION DATE (POPULATE FIELD IN SMS AND/OR FORWARD NOTIFICATION).

5. LINES AND ANTENNA INSTALL DATE (POPULATE FIELD IN SMS AND/OR FORWARD NOTIFICATION).
6. POWER INSTALL DATE (POPULATE FIELD IN SMS AND/OR FORWARD NOTIFICATION).
7. TELCO READY DATE (POPULATE FIELD IN SMS AND/OR FORWARD NOTIFICATION).
8. PPC (OR SHELTER) INSTALL DATE (POPULATE FIELD IN SMS AND/OR FORWARD NOTIFICATION).
9. TOWER CONSTRUCTION START DATE (POPULATE FIELD IN SMS AND/OR FORWARD NOTIFICATION).
10. TOWER CONSTRUCTION COMPLETE DATE (POPULATE FIELD IN SMS AND/OR FORWARD NOTIFICATION).
11. BTS AND RADIO EQUIPMENT DELIVERED AT SITE DATE (POPULATE FIELD IN SMS AND/OR FORWARD NOTIFICATION).
12. NETWORK OPERATIONS HANDOFF CHECKLIST (HOC WALK) COMPLETE (UPLOAD FORM IN SMS)
13. CIVIL CONSTRUCTION COMPLETE DATE (POPULATE FIELD IN SMS AND/OR FORWARD NOTIFICATION).
14. SITE CONSTRUCTION PROGRESS PHOTOS UNLOADED INTO SMS.

SECTION 01 400 - SUBMITTALS & TESTS

- PART 1 - GENERAL
- 1.1 THE WORK: THESE STANDARD CONSTRUCTION SPECIFICATIONS IN CONJUNCTION WITH THE OTHER CONTRACT DOCUMENTS AND THE CONSTRUCTION DRAWINGS DESCRIBE THE WORK TO BE PERFORMED BY THE CONTRACTOR.
 - 1.2 RELATED DOCUMENTS:
 - A. THE REQUIREMENTS OF THIS SECTION APPLY TO ALL SECTIONS IN THIS SPECIFICATION.
 - B. SPRINT STANDARD CONSTRUCTION DETAILS FOR WIRELESS SITES ARE INCLUDED IN AND MADE A PART OF THESE SPECIFICATIONS HERewith.
 - 1.3 SUBMITTALS:
 - A. THE WORK IN ALL ASPECTS SHALL COMPLY WITH THE CONSTRUCTION DRAWINGS AND THESE SPECIFICATIONS.
 - B. SUBMIT THE FOLLOWING TO COMPANY REPRESENTATIVE FOR APPROVAL.
 1. CONCRETE MIX-DESIGNS FOR TOWER FOUNDATIONS, ANCHORS PIERS, AND CONCRETE PAVING.
 2. CONCRETE BREAK TESTS AS SPECIFIED HEREIN.
 3. SPECIAL FINISHES FOR INTERIOR SPACES, IF ANY.
 4. ALL EQUIPMENT AND MATERIALS SO IDENTIFIED ON THE CONSTRUCTION DRAWINGS.
 5. CHEMICAL GROUNDING DESIGN.
 - D. ALTERNATES: AT THE COMPANY'S REQUEST, ANY ALTERNATIVES TO THE MATERIALS OR METHODS SPECIFIED SHALL BE SUBMITTED TO SPRINT'S CONSTRUCTION MANAGER FOR APPROVAL PRIOR TO BEING SHIPPED TO SITE. SPRINT WILL REVIEW AND APPROVE ONLY THOSE REQUESTS MADE IN WRITING. NO VERBAL APPROVALS WILL BE CONSIDERED. SUBMITTAL FOR APPROVAL SHALL INCLUDE A STATEMENT OF COST REDUCTION PROPOSED FOR USE OF ALTERNATE PRODUCT.
 - 1.4 TESTS AND INSPECTIONS:
 - A. THE CONTRACTOR SHALL BE RESPONSIBLE FOR ALL CONSTRUCTION TESTS, INSPECTIONS AND PROJECT DOCUMENTATION.
 - B. CONTRACTOR SHALL ACCOMPLISH TESTING INCLUDING BUT NOT LIMITED TO THE FOLLOWING:
 1. COAX SWEEPS AND FIBER TESTS PER TS-0200 REV 4 ANTENNA LINE ACCEPTANCE STANDARDS.
 2. AZIMUTH AND DOWN TILT USING ELECTRONIC COMMERCIAL MADE-FOR-THE-PURPOSE ANTENNA ALIGNMENT TOOL.
 3. CONTRACTOR SHALL BE RESPONSIBLE FOR ANY AND ALL CORRECTIONS TO ANY WORK IDENTIFIED AS UNACCEPTABLE IN SITE INSPECTION ACTIVITIES AND/OR AS A RESULT OF TESTING.
 - C. REQUIRED CLOSEOUT DOCUMENTATION INCLUDES, BUT IS NOT LIMITED TO THE FOLLOWING:
 1. AZIMUTH, DOWN TILT, AGL - UPLOAD REPORT FROM ANTENNA ALIGNMENT TOOL TO SITERRA TASK 465. INSTALLED AZIMUTH, DOWN TILT, AND AGL MUST CONFORM TO THE RF DATA SHEETS. SWEEP AND FIBER TESTS
 2. SCANABLE BARCODE PHOTOGRAPHS OF TOWER TOP AND INACCESSIBLE SERIALIZED EQUIPMENT
 3. ALL AVAILABLE JURISDICTIONAL INFORMATION
 4. PDF SCAN OF REDLINES PRODUCED IN FIELD

5. ELECTRONIC AS-BUILT DRAWINGS IN AUTOCAD AND PDF FORMATS. ANY FIELD CHANGE MUST BE REFLECTED BY MODIFYING THE PLANS, ELEVATIONS, AND DETAILS IN THE DRAWING SETS. GENERAL NOTES INDICATING MODIFICATIONS WILL NOT BE ACCEPTED. CHANGES SHALL BE HIGHLIGHTED AS "CLOUDS" IDENTIFIED AS THE "AS-BUILT" CONDITION.
6. LIEN WAIVERS
7. FINAL PAYMENT APPLICATION
8. REQUIRED FINAL CONSTRUCTION PHOTOS
9. CONSTRUCTION AND COMMISSIONING CHECKLIST COMPLETE WITH NO DEFICIENT ITEMS
10. ALL POST NTP TASKS INCLUDING DOCUMENT UPLOADS COMPLETED IN SITERRA (SPRINTS DOCUMENT REPOSITORY OF RECORD).
- 1.5 COMMISSIONING: PERFORM ALL COMMISSIONING AS REQUIRED BY APPLICABLE MOPs
- 1.6 INTEGRATION: PERFORM ALL INTEGRATION ACTIVITIES AS REQUIRED BY APPLICABLE MOPs

PART 2 - PRODUCTS (NOT USED)


PART 3 - EXECUTION

- 3.1 REQUIREMENTS FOR TESTING:
- A. THIRD PARTY TESTING AGENCY:
 1. WHEN THE USE OF A THIRD PARTY INDEPENDENT TESTING AGENCY IS REQUIRED, THE AGENCY THAT IS SELECTED MUST PERFORM SUCH WORK ON A REGULAR BASIS IN THE STATE WHERE THE PROJECT IS LOCATED AND HAVE A THOROUGH UNDERSTANDING OF LOCAL AVAILABLE MATERIALS, INCLUDING THE SOIL, ROCK, AND GROUNDWATER CONDITIONS.
 2. THE THIRD PARTY TESTING AGENCY IS TO BE FAMILIAR WITH THE APPLICABLE REQUIREMENTS FOR THE TESTS TO BE DONE, EQUIPMENT TO BE USED, AND ASSOCIATED HEALTH AND SAFETY ISSUES.
 3. EXPERIENCE IN SOILS, CONCRETE, MASONRY, AGGREGATE, AND ASPHALT TESTING USING ASTM, AASHTO, AND OTHER METHODS IS NEEDED.
 4. EXPERIENCE IN SOILS, CONCRETE, MASONRY, AGGREGATE, AND ASPHALT TESTING USING ASTM, AASHTO, AND OTHER METHODS IS NEEDED.
- 3.2 REQUIRED TESTS:
- A. CONTRACTOR SHALL ACCOMPLISH TESTING INCLUDING BUT NOT LIMITED TO THE FOLLOWING:
 1. CONCRETE CYLINDER BREAK TESTS FOR THE TOWER AND ANCHOR FOUNDATIONS AS SPECIFIED IN SECTION: PORTLAND CEMENT CONCRETE PAVING.
 2. ASPHALT ROADWAY COMPACTED THICKNESS, SURFACE SMOOTHNESS, AND COMPACTED DENSITY TESTING AS SPECIFIED IN SECTION: HOT MIX ASPHALT PAVING.
 3. FIELD QUALITY CONTROL TESTING AS SPECIFIED IN SECTION: PORTLAND CEMENT CONCRETE PAVING.
 4. TESTING REQUIRED UNDER SECTION: AGGREGATE BASE FOR ACCESS ROADS, PADS AND ANCHOR LOCATIONS
 5. STRUCTURAL BACKFILL COMPACTION TESTS FOR THE TOWER FOUNDATION.
 6. SITE RESISTANCE TO EARTH TESTING PER EXHIBIT: CELL SITE GROUNDING SYSTEM DESIGN.
 7. ANTENNA AND COAX SWEEP TESTS PER EXHIBIT: ANTENNA TRANSMISSION LINE ACCEPTANCE STANDARDS.
 8. GROUNDING AT ANTENNA MASTS FOR GPS AND ANTENNAS
 9. ALL OTHER TESTS REQUIRED BY COMPANY OR JURISDICTION.

3.3 REQUIRED INSPECTIONS

- A. SCHEDULE INSPECTIONS WITH COMPANY REPRESENTATIVE.
- B. CONDUCT INSPECTIONS INCLUDING BUT NOT LIMITED TO THE FOLLOWING:
 1. GROUNDING SYSTEM INSTALLATION PRIOR TO EARTH CONCEALMENT DOCUMENTED WITH DIGITAL PHOTOGRAPHS BY CONTRACTOR, APPROVED BY A&E OR SPRINT REPRESENTATIVE.
 2. FORMING FOR CONCRETE AND REBAR PLACEMENT PRIOR TO POUR DOCUMENTED WITH DIGITAL PHOTOGRAPHS BY CONTRACTOR, APPROVED BY A&E OR SPRINT REPRESENTATIVE.
 3. COMPACTION OF BACKFILL MATERIALS; AGGREGATE BASE FOR ROADS, PADS, AND ANCHORS; ASPHALT PAVING; AND SHAFT BACKFILL FOR CONCRETE AND WOOD POLES, BY INDEPENDENT THIRD PARTY AGENCY.
 4. PRE- AND POST-CONSTRUCTION ROOFTOP AND STRUCTURAL INSPECTIONS ON EXISTING FACILITIES.
 5. TOWER ERECTION SECTION STACKING AND PLATFORM ATTACHMENT DOCUMENTED BY DIGITAL PHOTOGRAPHS BY THIRD PARTY AGENCY.
 6. ANTENNA AZIMUTH, DOWN TILT AND PER SUNLIGHT TOOL SUNSIGHT INSTRUMENTS - ANTENNALIGN ALIGNMENT TOOL (AAT)

PLANS PREPARED FOR:



6580 Sprint Parkway
Overland Park, Kansas 66251


PLANS PREPARED BY:

INFINIGY Design. Build. Deliver.

1033 Watervliet Shaker Rd
Albany, NY 12205
Office # (518) 690-0790
Fax # (518) 690-0793


JOB NUMBER 340-000

MLA PARTNER:



116 HUNTINGTON AVENUE, 11TH FLOOR
BOSTON, MA 02116

ENGINEERING LICENSE:



DRAWING NOTICE:

THESE DOCUMENTS ARE CONFIDENTIAL AND ARE THE SOLE PROPERTY OF SPRINT AND MAY NOT BE REPRODUCED, DISSEMINATED OR REDISTRIBUTED WITHOUT THE EXPRESS WRITTEN CONSENT OF SPRINT.

REVISIONS:	DESCRIPTION	DATE	BY	REV
REVISED PER COMMENT		3/13/14	MAP	B
ISSUED FOR REVIEW		1/28/14	AHS	A

SITE NAME:

**WINSTED -
PLATT HILL RD**

SITE CASCADE:

CT73XC001

SITE ADDRESS:

428 PLATT HILL ROAD
WINSTED, CT 06098

SHEET DESCRIPTION:

SPRINT SPECIFICATIONS

SHEET NUMBER:

SP-2

CONTINUE FROM SP-2

7. VERIFICATION DOCUMENTED WITH THE ANTENNA CHECKLIST REPORT, BY A&E, SITE DEVELOPMENT REP, OR RF REP.
 8. FINAL INSPECTION CHECKLIST AND HANDOFF WALK (HOC). SIGNED FORM SHOWING ACCEPTANCE BY FIELD OPS IS TO BE UPLOADED INTO SMS.
 9. COAX SWEEP AND FIBER TESTING DOCUMENTS SUBMITTED VIA SMS FOR RF APPROVAL
 10. SCAN-ABLE BARCODE PHOTOGRAPHS OF TOWER TOP AND INACCESSIBLE SERIALIZED EQUIPMENT
 11. ALL AVAILABLE JURISDICTIONAL INFORMATION
 12. PDF SCAN OF REDLINES PRODUCED IN FIELD
- C. THE CONTRACTOR SHALL BE RESPONSIBLE FOR ANY AND ALL CORRECTIONS TO ANY WORK IDENTIFIED AS UNACCEPTABLE IN SITE INSPECTION ACTIVITIES AND/OR AS A RESULT OF TESTING.
- D. CONSTRUCTION INSPECTIONS AND CORRECTIVE MEASURES SHALL BE DOCUMENTED BY THE CONTRACTOR WITH WRITTEN REPORTS AND PHOTOGRAPHS. PHOTOGRAPHS MUST BE DIGITAL AND OF SUFFICIENT QUALITY TO CLEARLY SHOW THE SITE CONSTRUCTION. PHOTOGRAPHS MUST CLEARLY IDENTIFY THE PHOTOGRAPHED ITEM AND BE LABELED WITH THE SITE CASCADE NUMBER, SITE NAME, DESCRIPTION, AND DATE.
- 3.4 DELIVERABLES: TEST AND INSPECTION REPORTS AND CLOSEOUT DOCUMENTATION SHALL BE UPLOADED TO THE SMS AND/OR FORWARDED TO SPRINT FOR INCLUSION INTO THE PERMANENT SITE FILES.
- A. THE FOLLOWING TEST AND INSPECTION REPORTS SHALL BE PROVIDED AS APPLICABLE.
1. CONCRETE MIX AND CYLINDER BREAK REPORTS.
 2. STRUCTURAL BACKFILL COMPACTION REPORTS.
 3. SITE RESISTANCE TO EARTH TEST.
 4. ANTENNA AZIMUTH AND DOWN TILT VERIFICATION
 5. TOWER ERECTION INSPECTIONS AND MEASUREMENTS DOCUMENTING TOWER INSTALLED PER SUPPLIER'S REQUIREMENTS AND THE APPLICABLE SECTIONS HEREIN.
 6. COAX CABLE SWEEP TESTS PER COMPANY'S "ANTENNA LINE ACCEPTANCE STANDARDS".
- B. REQUIRED CLOSEOUT DOCUMENTATION INCLUDES THE FOLLOWING:
1. TEST WELLS AND TRENCHES: PHOTOGRAPHS OF ALL TEST WELLS; PHOTOGRAPHS SHOWING ALL OPEN EXCAVATIONS AND TRENCHING PRIOR TO BACKFILLING SHOWING A TAPE MEASURE VISIBLE IN THE EXCAVATIONS INDICATING DEPTH.
 2. CONDUITS, CONDUCTORS AND GROUNDING: PHOTOGRAPHS SHOWING TYPICAL INSTALLATION OF CONDUCTORS AND CONNECTORS; PHOTOGRAPHS SHOWING TYPICAL BEND RADIUS OF INSTALLED GROUND WIRES AND GROUND ROD SPACING;
 3. CONCRETE FORMS AND REINFORCING: CONCRETE FORMING AT TOWER AND EQUIPMENT/SHELTER PAD/FOUNDATIONS - PHOTOGRAPHS SHOWING ALL REINFORCING STEEL, UTILITY AND CONDUIT STUB OUTS; PHOTOGRAPHS SHOWING CONCRETE POUR OF SHELTER SLAB/FOUNDATION, TOWER FOUNDATION AND GUY ANCHORS WITH VIBRATOR IN USE; PHOTOGRAPHS SHOWING EACH ANCHOR ON GUYED TOWERS, BEFORE CONCRETE POUR.
 4. TOWER, ANTENNAS AND MAINLINE: INSPECTION AND PHOTOGRAPHS OF SECTION STACKING; INSPECTION AND PHOTOGRAPHS OF PLATFORM COMPONENT ATTACHMENT POINTS; PHOTOGRAPHS OF TOWER TOP GROUNDING; PHOTOS OF TOWER COAX LINE COLOR CODING AT THE TOP AND AT GROUND LEVEL; INSPECTION AND PHOTOGRAPHS OF OPERATIONAL OF TOWER LIGHTING, AND PLACEMENT OF FAA REGISTRATION SIGN; PHOTOGRAPHS SHOWING ADDITIONAL GROUNDING POINTS FOR TOWERS GREATER THAN 200 FEET.; PHOTOS OF ANTENNA GROUND BAR, EQUIPMENT GROUND BAR, AND MASTER GROUND BAR; PHOTOS OF GPS ANTENNA(S); PHOTOS OF EACH SECTOR OF ANTENNAS; ONE PHOTOGRAPH LOOKING AT THE SECTOR AND ONE FROM BEHIND SHOWING THE PROJECTED COVERAGE AREA; PHOTOS OF COAX WEATHERPROOFING - TOP AND BOTTOM; PHOTOS OF COAX GROUNDING--TOP AND BOTTOM; PHOTOS OF ANTENNA AND MAST GROUNDING; PHOTOS OF COAX CABLE ENTRY INTO SHELTER; PHOTOS OF PLATFORM MECHANICAL CONNECTIONS TO TOWER/MONOPOLE.
 5. ROOF TOPS: PRE-CONSTRUCTION AND POST-CONSTRUCTION VISUAL INSPECTION AND PHOTOGRAPHS OF THE ROOF AND INTERIOR TO DETERMINE AND DOCUMENT CONDITIONS; ROOF TOP CONSTRUCTION INSPECTIONS AS REQUIRED BY THE JURISDICTION; PHOTOGRAPHS OF CABLE TRAY AND/OR ICE BRIDGE; PHOTOGRAPHS OF DOGHOUSE/CABLE EXIT FROM ROOF;
 6. SITE LAYOUT - PHOTOGRAPHS OF THE OVERALL COMPOUND, INCLUDING EQUIPMENT PLATFORM FROM ALL FOUR CORNERS.
 7. FINISHED UTILITIES: CLOSE-UP PHOTOGRAPHS OF THE PPC BREAKER PANEL; CLOSE-UP PHOTOGRAPH OF THE INSIDE OF THE TELCO PANEL AND NIU; CLOSE-UP PHOTOGRAPH OF THE POWER METER AND DISCONNECT; PHOTOS OF POWER AND TELCO ENTRANCE TO COMPANY ENCLOSURE; PHOTOGRAPHS AT METER BOX AND/OR FACILITY DISTRIBUTION PANEL.
 8. REQUIRED MATERIALS CERTIFICATIONS: CONCRETE MIX DESIGNS; MILL CERTIFICATION FOR ALL REINFORCING AND STRUCTURAL STEEL; AND ASPHALT PAVING MIX DESIGN.
 9. ANY AND ALL SUBMITTALS BY THE JURISDICTION OR COMPANY.

SECTION 01 400 - SUBMITTALS & TESTS

PART 1 - GENERAL

1.1 THE WORK: THESE STANDARD CONSTRUCTION SPECIFICATIONS IN CONJUNCTION WITH THE OTHER CONTRACT DOCUMENTS AND THE CONSTRUCTION DRAWINGS DESCRIBE THE WORK TO BE PERFORMED BY THE CONTRACTOR.

1.2 RELATED DOCUMENTS:

- A. THE REQUIREMENTS OF THIS SECTION APPLY TO ALL SECTIONS IN THIS SPECIFICATION.
- B. SPRINT "STANDARD CONSTRUCTION DETAILS FOR WIRELESS SITES" ARE INCLUDED IN AND MADE A PART OF THESE SPECIFICATIONS HEREWITH.

PART 2 - PRODUCTS (NOT USED)

PART 3 - EXECUTION

3.1 WEEKLY REPORTS:

- A. CONTRACTOR SHALL PROVIDE SPRINT WITH WEEKLY REPORTS SHOWING PROJECT STATUS. THIS STATUS REPORT FORMAT WILL BE PROVIDED TO THE CONTRACTOR BY SPRINT. THE REPORT WILL CONTAIN SITE ID NUMBER, THE MILESTONES FOR EACH SITE, INCLUDING THE BASELINE DATE, ESTIMATED COMPLETION DATE AND ACTUAL COMPLETION DATE.
- B. REPORT INFORMATION WILL BE TRANSMITTED TO SPRINT VIA ELECTRONIC MEANS AS REQUIRED. THIS INFORMATION WILL PROVIDE A BASIS FOR PROGRESS MONITORING AND PAYMENT.

3.2 PROJECT CONFERENCE CALLS:

- A. SPRINT MAY HOLD WEEKLY PROJECT CONFERENCE CALLS. CONTRACTOR WILL BE REQUIRED TO COMMUNICATE SITE STATUS, MILESTONE COMPLETIONS AND UPCOMING MILESTONE PROJECTIONS, AND ANSWER ANY OTHER SITE STATUS QUESTIONS AS NECESSARY.

3.3 PROJECT TRACKING IN SMS:

- A. CONTRACTOR SHALL PROVIDE SCHEDULE UPDATES AND PROJECTIONS IN THE SMS SYSTEM ON A WEEKLY BASIS.

3.4 ADDITIONAL REPORTING:

- A. ADDITIONAL OR ALTERNATE REPORTING REQUIREMENTS MAY BE ADDED TO THE REPORT AS DETERMINED TO BE REASONABLY NECESSARY BY COMPANY.

3.5 PROJECT PHOTOGRAPHS:

- A. FILE DIGITAL PHOTOGRAPHS OF COMPLETED SITE IN JPEG FORMAT IN THE SMS PHOTO LIBRARY FOR THE RESPECTIVE SITE. PHOTOGRAPHS SHALL BE CLEARLY LABELED WITH SITE NUMBER, NAME AND DESCRIPTION, AND SHALL INCLUDE AT A MINIMUM THE FOLLOWING AS APPLICABLE:

1. SHELTER AND TOWER OVERVIEW.
2. TOWER FOUNDATION(S) - FORMS AND STEEL BEFORE POUR (EACH ANCHOR ON GUYED TOWERS).
3. TOWER FOUNDATION(S) POUR WITH VIBRATOR IN USE (EACH ANCHOR ON GUYED TOWERS).
4. TOWER STEEL AS BEING INSTALLED INTO HOLE (SHOW ANCHOR STEEL ON GUYED TOWERS).
5. PHOTOS OF TOWER SECTION STACKING.
6. CONCRETE TESTING / SAMPLES.
7. PLACING OF ANCHOR BOLTS IN TOWER FOUNDATION.
8. BUILDING/WATER TANK FROM ROAD FOR TENANT IMPROVEMENTS OR COMMENTS.
9. SHELTER FOUNDATION--FORMS AND STEEL BEFORE POURING.
10. SHELTER FOUNDATION POUR WITH VIBRATOR IN USE.
11. COAX CABLE ENTRY INTO SHELTER.
12. PLATFORM MECHANICAL CONNECTIONS TO TOWER/MONOPOLE.
13. ROOFTOP PRE AND POST CONSTRUCTION PHOTOS TO INCLUDE PENETRATIONS AND INTERIOR CEILING.
14. PHOTOS OF TOWER TOP COAX LINE COLOR CODING AND COLOR CODING AT GROUND LEVEL.
15. PHOTOS OF ALL APPROPRIATE COMPANY OR REGULATORY SIGNAGE.
16. PHOTOS OF EQUIPMENT BOLT DOWN INSIDE SHELTER.
17. POWER AND TELCO ENTRANCE TO COMPANY ENCLOSURE AND POWER AND TELCO SUPPLY LOCATIONS INCLUDING METER/DISCONNECT.
18. ELECTRICAL TRENCH(S) WITH ELECTRICAL / CONDUIT BEFORE BACKFILL.
19. ELECTRICAL TRENCH(S) WITH FOIL-BACKED TAPE BEFORE FURTHER BACKFILL.
20. TELCO TRENCH WITH TELEPHONE / CONDUIT BEFORE BACKFILL.
21. TELCO TRENCH WITH FOIL-BACKED TAPE BEFORE FURTHER BACKFILL.
22. SHELTER GROUND-RING TRENCH WITH GROUND-WIRE BEFORE BACKFILL (SHOW ALL CAD WELDS AND BEND RADII).
23. TOWER GROUND-RING TRENCH WITH GROUND-WIRE BEFORE BACKFILL (SHOW ALL CAD WELDS AND BEND RADII).

24. FENCE GROUND-RING TRENCH WITH GROUND-WIRE BEFORE BACKFILL (SHOW ALL CAD WELDS AND BEND RADII).
 25. ALL BTS GROUND CONNECTIONS.
 26. ALL GROUND TEST WELLS.
 27. ANTENNA GROUND BAR AND EQUIPMENT GROUND BAR.
 28. ADDITIONAL GROUNDING POINTS ON TOWERS ABOVE 200'.
 29. HVAC UNITS INCLUDING CONDENSERS ON SPLIT SYSTEMS.
 30. GPS ANTENNAS.
 31. CABLE TRAY AND/OR WAVEGUIDE BRIDGE.
 32. DOGHOUSE/CABLE EXIT FROM ROOF.
 33. EACH SECTOR OF ANTENNAS; ONE PHOTOGRAPH LOOKING AT THE SECTOR AND ONE FROM BEHIND SHOWING THE PROJECTED COVERAGE AREA.
 34. MASTER BUS BAR.
 35. TELCO BOARD AND NIU.
 36. ELECTRICAL DISTRIBUTION WALL.
 37. CABLE ENTRY WITH SURGE SUPPRESSION.
 38. ENTRANCE TO EQUIPMENT ROOM.
 39. COAX WEATHERPROOFING--TOP AND BOTTOM OF TOWER.
 40. COAX GROUNDING --TOP AND BOTTOM OF TOWER.
 41. ANTENNA AND MAST GROUNDING.
 42. LANDSCAPING - WHERE APPLICABLE.
- 3.6 FINAL PROJECT ACCEPTANCE: COMPLETE ALL REQUIRED REPORTING TASKS PER CONTRACT, CONTRACT DOCUMENTS OR THE SPRINT INTEGRATED CONSTRUCTION STANDARDS FOR WIRELESS SITES AND UPLOAD INTO SITERRA.

PLANS PREPARED FOR:



PLANS PREPARED BY:



MLA PARTNER:



ENGINEERING LICENSE:



DRAWING NOTICE:

THESE DOCUMENTS ARE CONFIDENTIAL AND ARE THE SOLE PROPERTY OF SPRINT AND MAY NOT BE REPRODUCED, DISSEMINATED OR REDISTRIBUTED WITHOUT THE EXPRESS WRITTEN CONSENT OF SPRINT.

REVISIONS:	DESCRIPTION	DATE	BY	REV
REVISED PER COMMENT		3/13/14	MAP	B
ISSUED FOR REVIEW		1/28/14	AHS	A

SITE NAME:
WINSTED - PLATT HILL RD

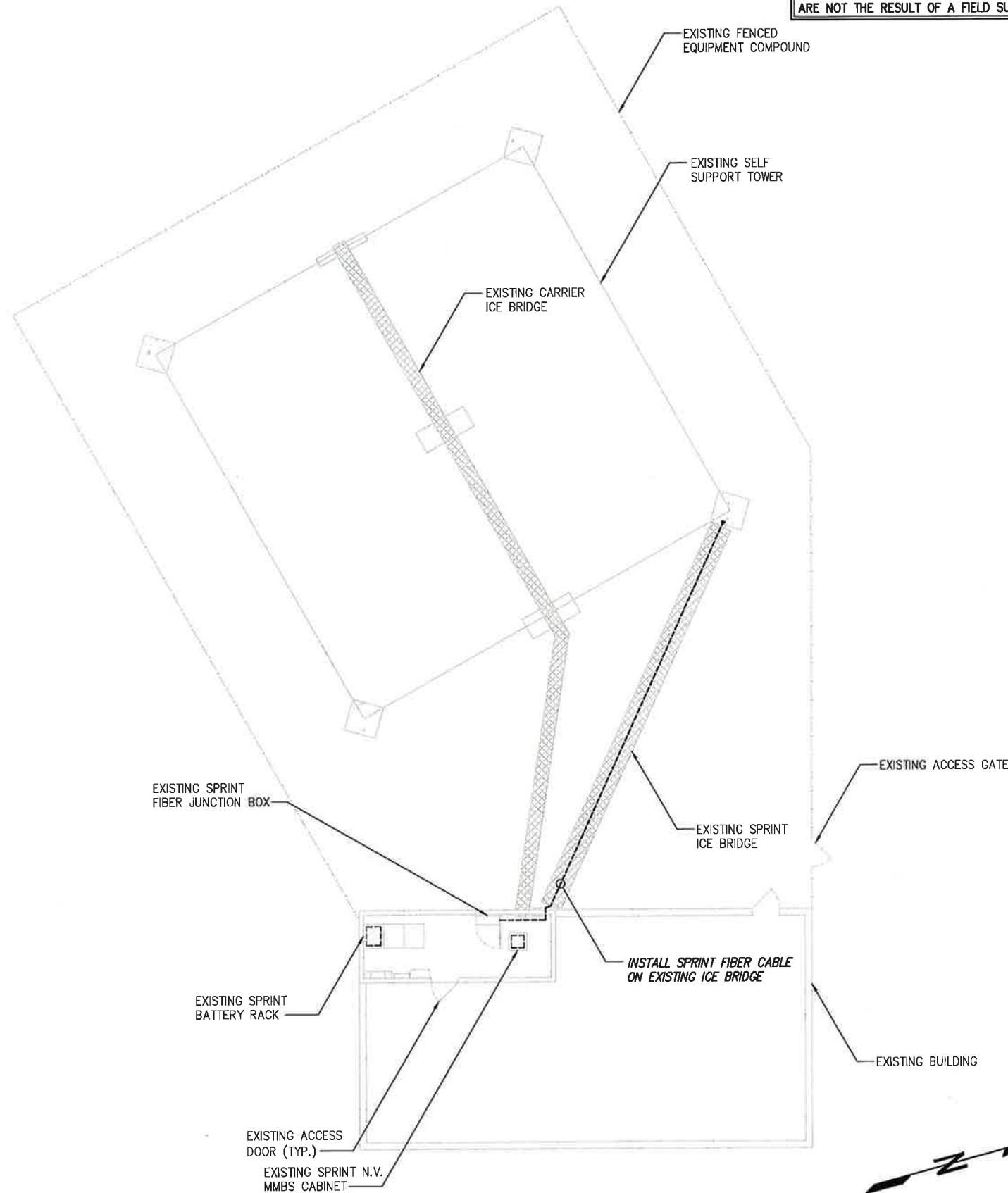
SITE CASCADE:
CT73XC001

SITE ADDRESS:
**428 PLATT HILL ROAD
WINSTED, CT 06098**

SHEET DESCRIPTION:
SPRINT SPECIFICATIONS

SHEET NUMBER:
SP-3

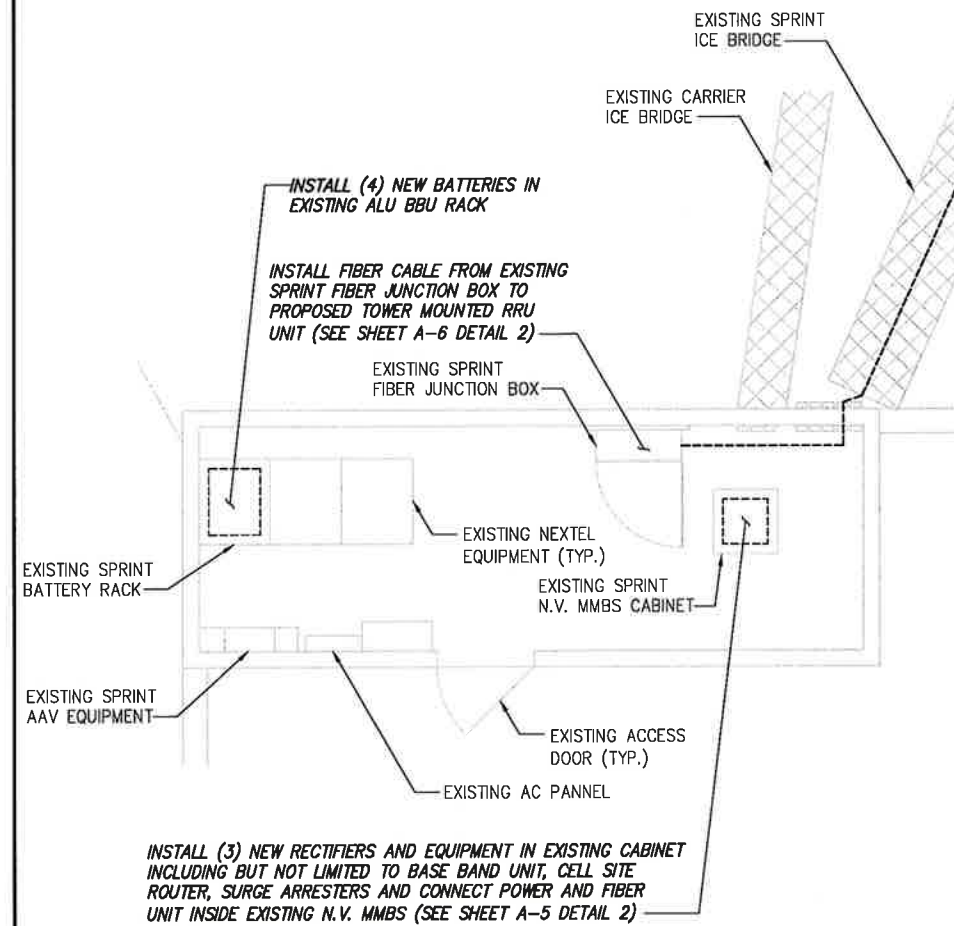
INFORMATION CONTAINED WITHIN DRAWINGS
 ARE BASED ON PROVIDED INFORMATION AND
 ARE NOT THE RESULT OF A FIELD SURVEY.



2.5' 0 2.5' 5' 10'
 (IN FEET)
 SCALE: 24"x36" SHEET 1" = 5'-0"
 SCALE: 11"x17" SHEET 1" = 10'-0"

OVERALL SITE PLAN

SCALE: AS NOTED 1



1' 0 1' 2' 4'
 (IN FEET)
 SCALE: 24"x36" SHEET 1" = 2'-0"
 SCALE: 11"x17" SHEET 1" = 4'-0"

SPRINT EQUIPMENT PLAN

SCALE: AS NOTED 2

PLANS PREPARED FOR:

Sprint
 6580 Sprint Parkway
 Overland Park, Kansas 66251

PLANS PREPARED BY:

INFINIGY Design. Build. Deliver.

1033 Watervliet Shaker Rd
 Albany, NY 12205
 Office # (518) 690-0790
 Fax # (518) 690-0793
 JOB NUMBER 340-000

MLA PARTNER:

AMERICAN TOWER CORPORATION

116 HUNTINGTON AVENUE, 11TH FLOOR
 BOSTON, MA 02116

ENGINEERING LICENSE:



DRAWING NOTICE:

THESE DOCUMENTS ARE CONFIDENTIAL AND ARE THE SOLE PROPERTY OF SPRINT AND MAY NOT BE REPRODUCED, DISSEMINATED OR REDISTRIBUTED WITHOUT THE EXPRESS WRITTEN CONSENT OF SPRINT.

REVISIONS:

DESCRIPTION	DATE	BY	REV
REVISED PER COMMENT	3/13/14	MAP	B
ISSUED FOR REVIEW	1/28/14	AHS	A

SITE NAME:

WINSTED -
 PLATT HILL RD

SITE CASCADE:

CT73XC001

SITE ADDRESS:

428 PLATT HILL ROAD
 WINSTED, CT 06098

SHEET DESCRIPTION:

SITE PLAN

SHEET NUMBER:

A-1

NOTE:
SPRINT TOWER TOP WORK CONTINGENT ON FOLLOWING:
COMPLETION OF STRUCTURAL ANALYSIS PROVIDED BY
AMERICAN TOWER CORP., COMPLETION OF ANTENNA/RRH
MOUNTING ASSESSMENT (PROVIDED BY AE)

NOTE:
SEE DETAIL 2 ON A-3
FOR ANTENNA LAYOUT

TOP OF EXISTING TOWER
ELEV. = ±240'-0" A.G.L.

INSTALL (1) SPRINT 2.5
ANTENNA EACH SECTOR
(SEE SHEET A-5 DETAIL 3)
INSTALL (1) RRU-2.5 EACH SECTOR
(SEE SHEET A-5 DETAILS 1)

OF EXISTING/TO BE INSTALLED SPRINT
ANTENNAS ELEV. = 196'-0" A.G.L.

NOTE:
INFINIGY ENGINEERING HAS NOT EVALUATED THE
EXISTING TOWER OR MOUNT FOR THIS SITE, AND
ASSUMES NO RESPONSIBILITY FOR ITS STRUCTURAL
INTEGRITY. REFER TO STRUCTURAL ANALYSIS BY
OTHERS PRIOR TO ANY CONSTRUCTION.

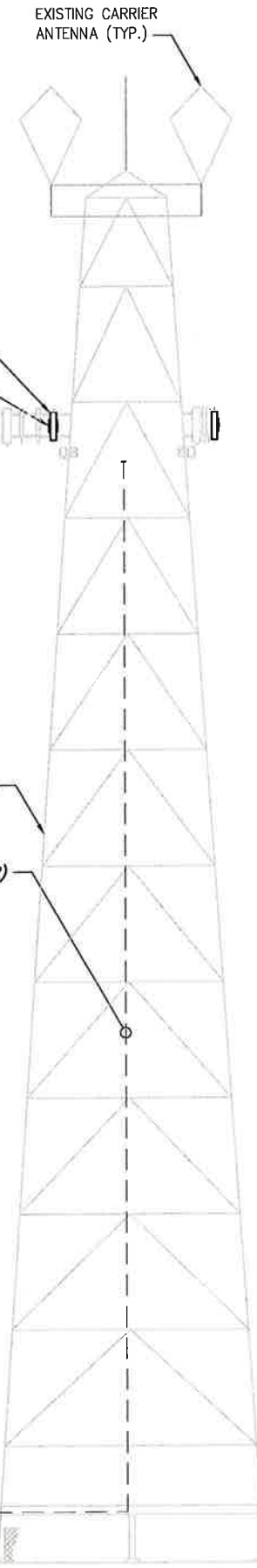
EXISTING SELF
SUPPORT TOWER
INSTALL FIBER CABLE FROM EXISTING SPRINT
FIBER JUNCTION BOX TO PROPOSED TOWER
MOUNTED RRU UNIT (SEE SHEET A-6 DETAIL 2)

EXISTING CARRIER
ANTENNA (TYP.)

EXISTING SPRINT
ICE BRIDGE

EXISTING
BUILDING

GROUND LEVEL



PLANS PREPARED FOR:



6580 Sprint Parkway
Overland Park, Kansas 66251

PLANS PREPARED BY:




1033 Watervliet Shaker Rd
Albany, NY 12205
Office # (518) 690-0790
Fax # (518) 690-0793
JOB NUMBER 340-000

MLA PARTNER:



116 HUNTINGTON AVENUE, 11TH FLOOR
BOSTON, MA 02116

ENGINEERING LICENSE:



DRAWING NOTICE:
THESE DOCUMENTS ARE CONFIDENTIAL AND ARE
THE SOLE PROPERTY OF SPRINT AND MAY NOT BE
REPRODUCED, DISSEMINATED OR REDISTRIBUTED
WITHOUT THE EXPRESS WRITTEN CONSENT OF
SPRINT.

REVISIONS:	DESCRIPTION	DATE	BY	REV
REVISED PER COMMENT		3/13/14	MAP	B
ISSUED FOR REVIEW		1/28/14	AHS	A

SITE NAME:
**WINSTED -
PLATT HILL RD**

SITE CASCADE:
CT73XC001

SITE ADDRESS:
**428 PLATT HILL ROAD
WINSTED, CT 06098**

SHEET DESCRIPTION:
**TOWER ELEVATION
& CABLE PLAN**

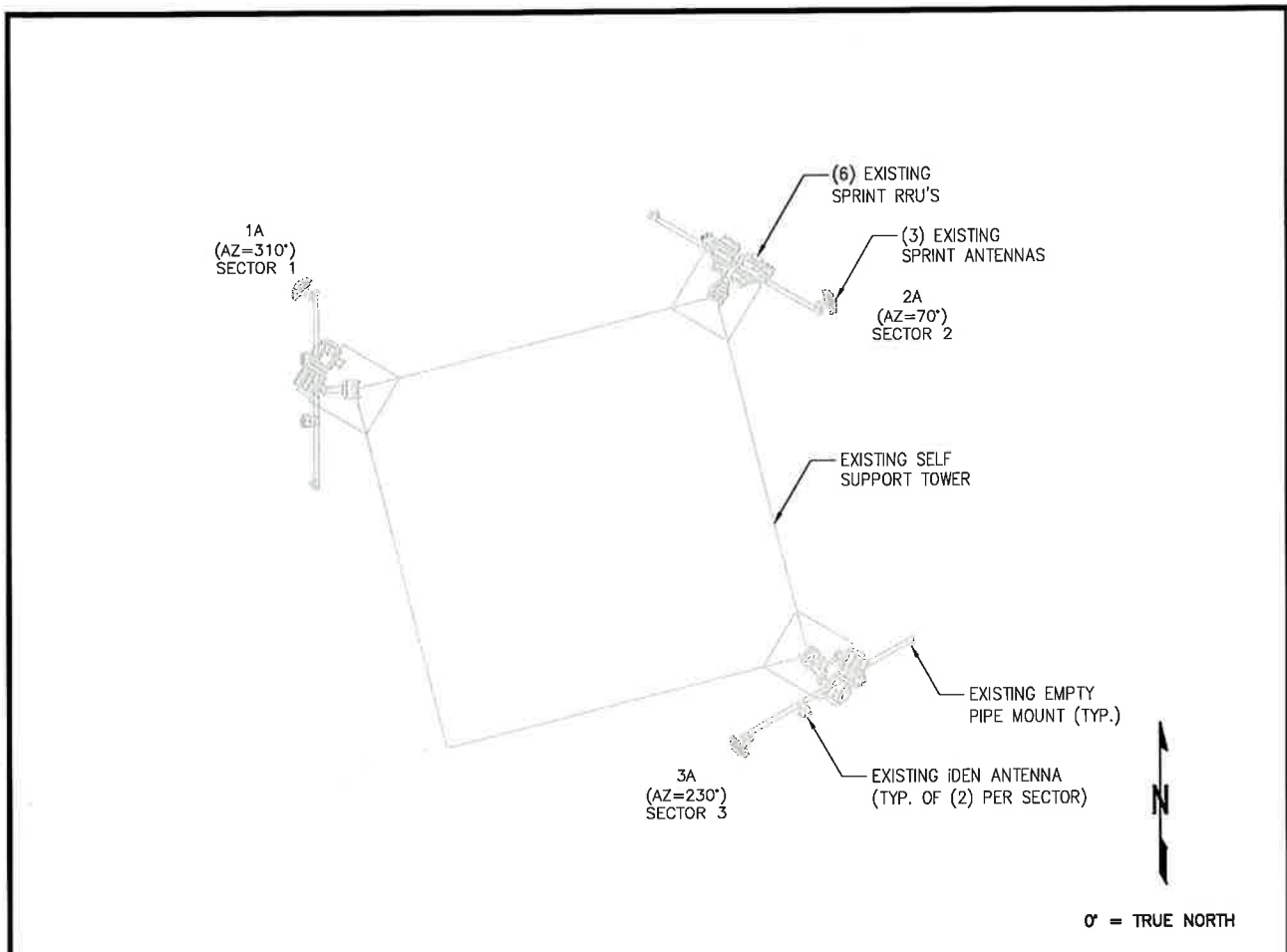
SHEET NUMBER:
A-2

DETAIL NOT USED NO SCALE 2

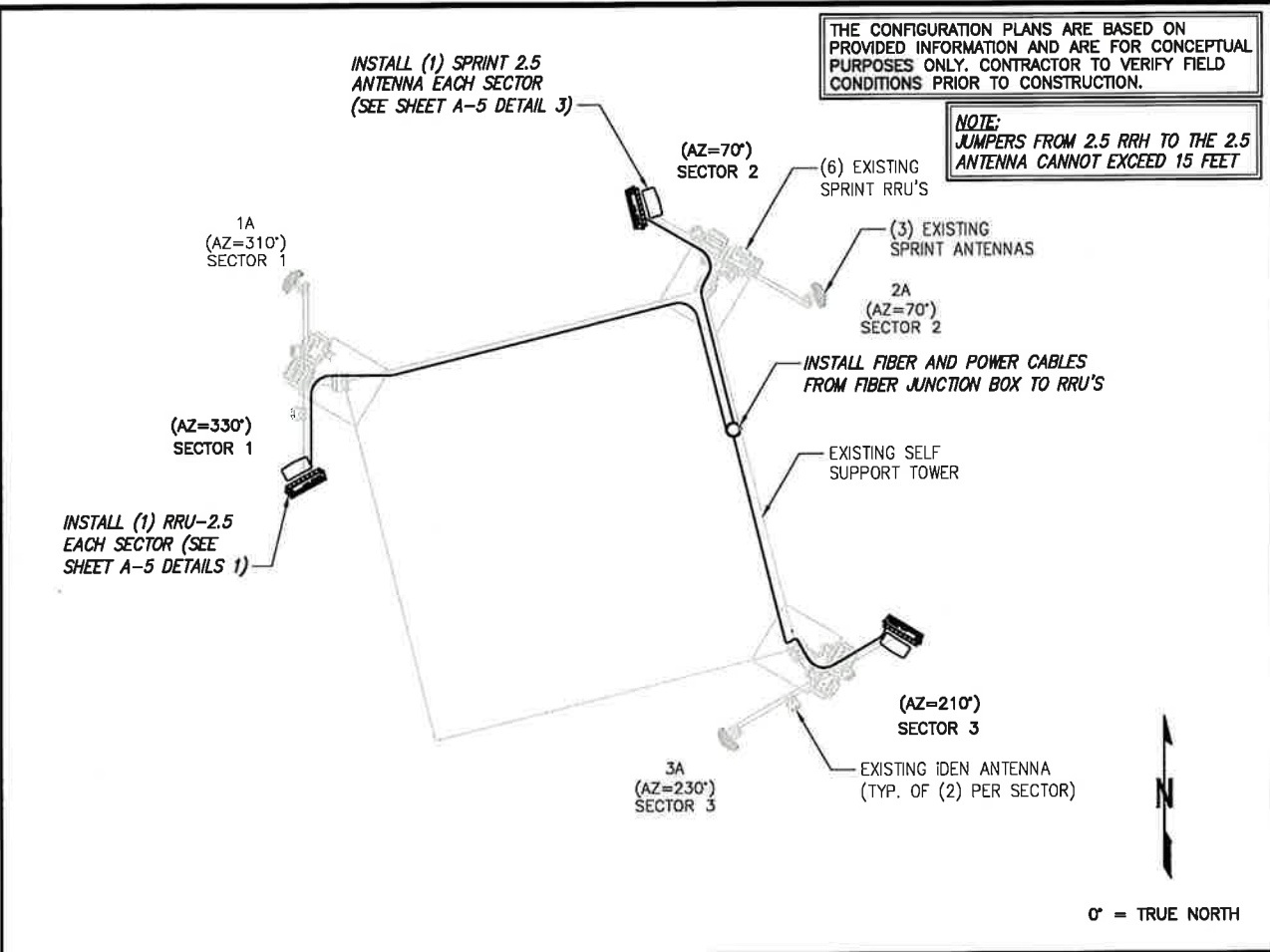
DETAIL NOT USED NO SCALE 3

DETAIL NOT USED NO SCALE 4

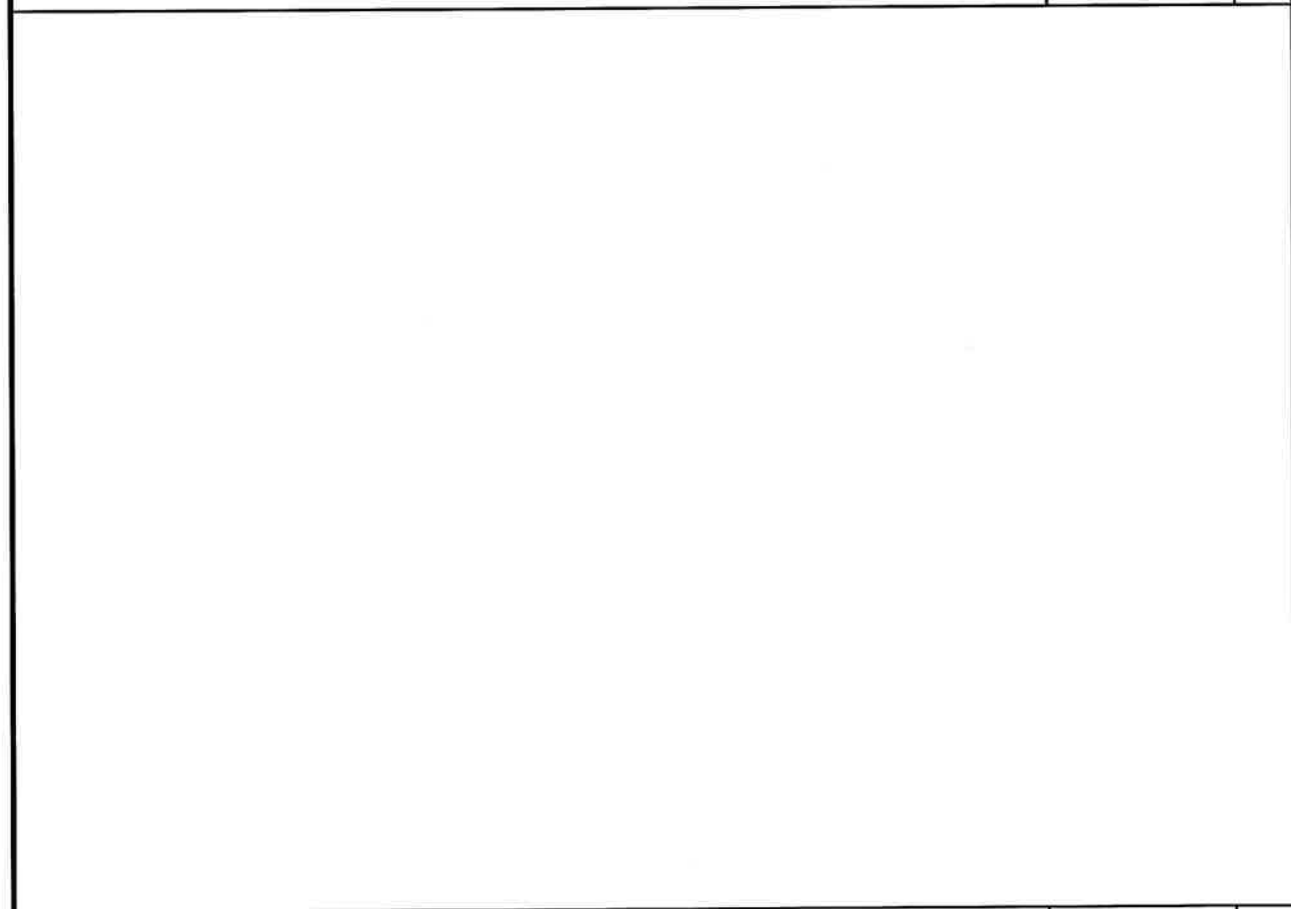
TOWER ELEVATION NO SCALE 1



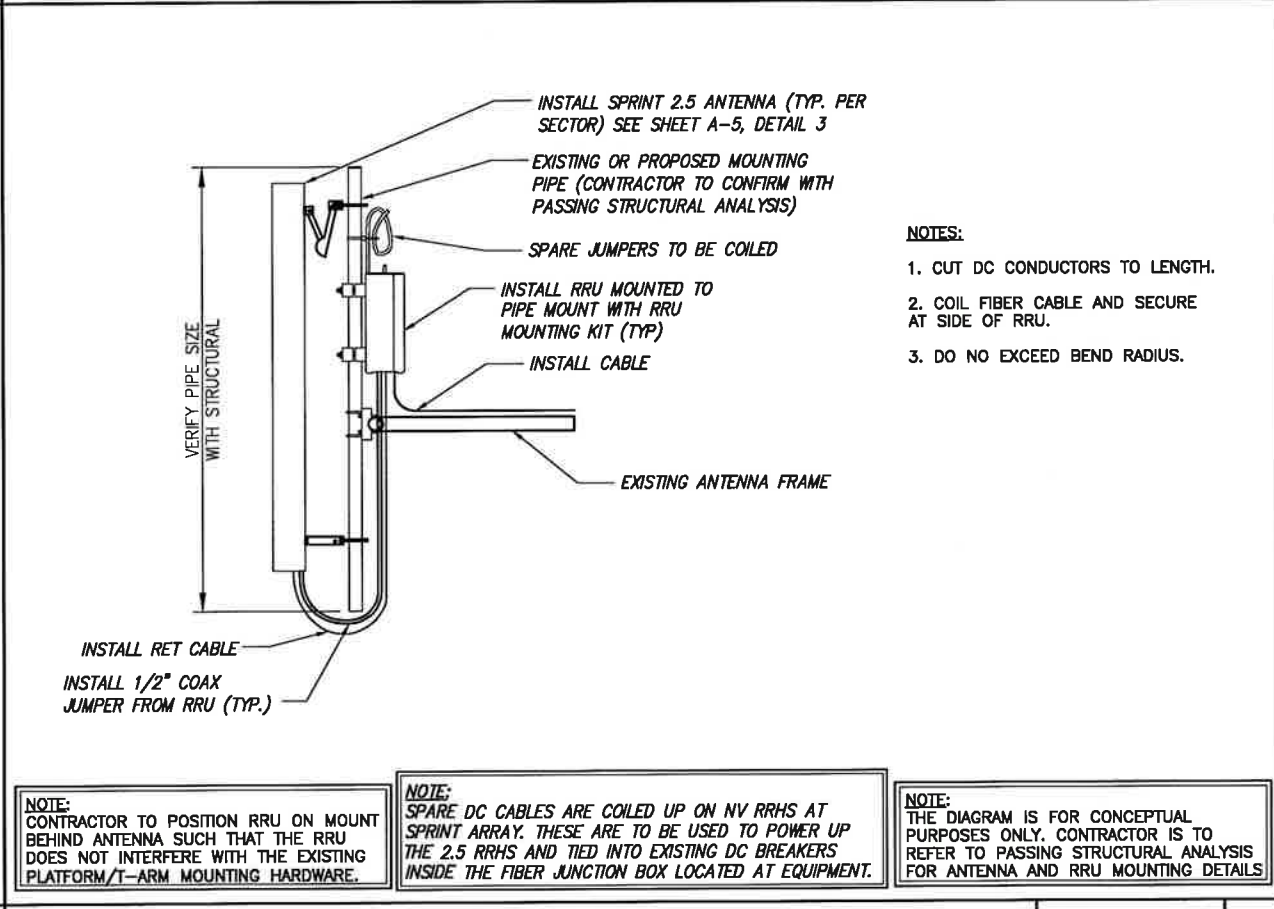
EXISTING ANTENNA & RRU LAYOUT NO SCALE 1



FINAL ANTENNA LAYOUT NO SCALE 2



DETAIL NOT USED NO SCALE 3



TYPICAL ANTENNA & RRU MOUNTING DETAILS NO SCALE 4

PLANS PREPARED FOR:

6580 Sprint Parkway
Overland Park, Kansas 66251

PLANS PREPARED BY:

1033 Watervliet Shaker Rd
Albany, NY 12205
Office # (518) 690-0790
Fax # (518) 690-0793
JOB NUMBER 340-000

MLA PARTNER:

116 HUNTINGTON AVENUE, 11TH FLOOR
BOSTON, MA 02116

ENGINEERING LICENSE:

DRAWING NOTICE:
THESE DOCUMENTS ARE CONFIDENTIAL AND ARE THE SOLE PROPERTY OF SPRINT AND MAY NOT BE REPRODUCED, DISSEMINATED OR REDISTRIBUTED WITHOUT THE EXPRESS WRITTEN CONSENT OF SPRINT.

REVISIONS:

DESCRIPTION	DATE	BY	REV

REVISED PER COMMENT 3/13/14 MAP B
ISSUED FOR REVIEW 1/28/14 AHS A

SITE NAME:
WINSTED - PLATT HILL RD

SITE CASCADE:
CT73XC001

SITE ADDRESS:
**428 PLATT HILL ROAD
WINSTED, CT 06098**

SHEET DESCRIPTION:
**ANTENNA LAYOUT
& MOUNTING DETAILS**

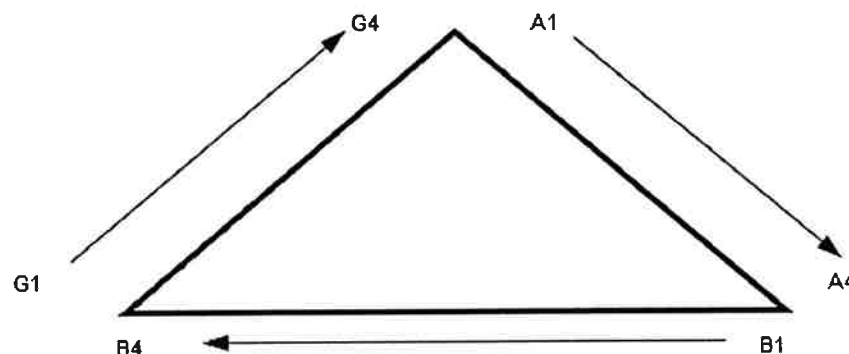
SHEET NUMBER:
A-3

NV CABLES			
BAND	INDICATOR	PORT	COLOR
800-1	YEL GRN	NV-1	GRN
1900-1	YEL RED	NV-2	BLU
1900-2	YEL BRN	NV-3	BRN
1900-3	YEL BLU	NV-4	WHT
1900-4	YEL SLT	NV-5	RED
800-2	YEL ORG	NV-6	SLT
SPARE	YEL WHT	NV-7	PPL
2500	YEL PPL	NV-8	ORG

HYBRID	
HYBRID	COLOR
1	GRN
2	BLU
3	BRN
4	WHT
5	RED
6	SLT
7	PPL
8	ORG

2.5 Band		
2500 Radio 1	COLOR	
YEL WHT	GRN	
YEL WHT	BLU	
YEL WHT	BRN	
YEL WHT	WHT	
YEL WHT	RED	
YEL WHT	SLT	
YEL WHT	PPL	
YEL WHT	ORG	

Figure 1: Antenna Orientation



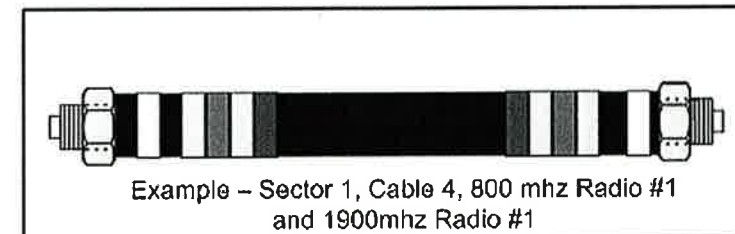
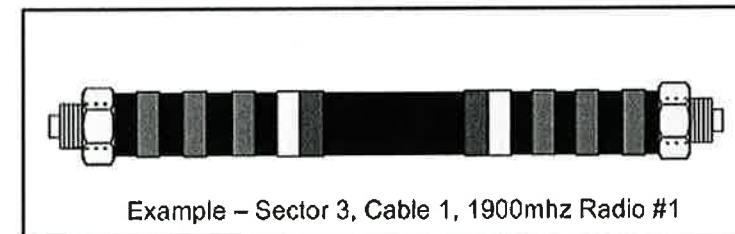
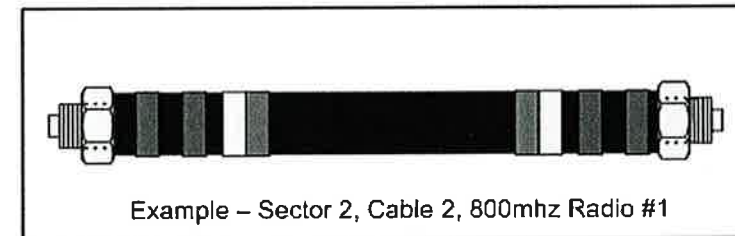
NOTES:

- ALL CABLES SHALL BE MARKED WITH 2" WIDE, UV STABILIZED, UL APPROVED TAPE.
- THE FIRST RING SHALL BE CLOSEST TO THE END OF THE CABLE AND SPACED APPROXIMATELY 2" FROM THE END CONNECTOR, WEATHERPROOFING, OR BREAK-OUT CYLINDER. THERE SHALL BE A 1" SPACE BETWEEN EACH RING FOR THE CABLE IDENTIFIER, AND NO SPACES BETWEEN THE FREQUENCY BANDS.
- A 2" GAP SHALL SEPARATE THE CABLE COLOR CODE FROM THE FREQUENCY COLOR CODE. THE 2" COLOR RINGS FOR THE FREQUENCY CODE SHALL BE PLACED NEXT TO EACH OTHER WITH NO SPACES.
- THE 2" COLORED TAPE(S) SHALL EACH BE WRAPPED A MINIMUM OF 3 TIMES AROUND THE INDIVIDUAL CABLES, AND THE TAPE SHALL BE KEPT IN THE SAME LOCATION AS MUCH AS POSSIBLE.
- SITES WITH MORE THAN FOUR (4) SECTORS WILL REQUIRE ADDITIONAL RINGS FOR EACH SECTOR, FOLLOWING THE PATTERN. HIGH CAPACITY SITES WILL USE THE NEXT COLOR IN THE SEQUENCE FOR ADDITIONAL CABLES IN EACH SECTOR.
- HYBRID FIBER CABLE SHALL BE SECTOR IDENTIFIED INSIDE THE CABINET ON FREQUENCY BUNDLES, ON THE SEALTITE, ON THE MAIN LINE UPON EXIT OF SEALTITE, AND BEFORE AND AFTER THE BREAKOUT UNIT (MEDUSA), AS WELL AS BEFORE AND AFTER ANY ENTRANCE OR EXIT.
- HFC "MAIN TRUNK" WILL NOT BE MARKED WITH THE FREQUENCY CODES, AS IT CONTAINS ALL FREQUENCIES.
- INDIVIDUAL POWER PAIRS AND FIBER BUNDLES SHALL BE LABELED WITH BOTH THE CABLE AND FREQUENCY.

Sector	Cable	First Ring	Second Ring	Third Ring
1 Alpha	1	Green	No Tape	No Tape
	2		No Tape	No Tape
	3	Brown	No Tape	No Tape
	4	White	No Tape	No Tape
	5	Red	No Tape	No Tape
	6	Grey	No Tape	No Tape
	7	Purple	No Tape	No Tape
	8	Orange	No Tape	No Tape
2 Beta	1	Green	Green	No Tape
	2			No Tape
	3	Brown	Brown	No Tape
	4	White	White	No Tape
	5	Red	Red	No Tape
	6	Grey	Grey	No Tape
	7	Purple	Purple	No Tape
	8	Orange	Orange	No Tape
3 Gamma	1	Green	Green	Green
	2			
	3	Brown	Brown	Brown
	4	White	White	White
	5	Red	Red	Red
	6	Grey	Grey	Grey
	7	Purple	Purple	Purple
	8	Orange	Orange	Orange

NV FREQUENCY	INDICATOR	ID
800-1	YEL GRN	
1900-1	YEL RED	
1900-2	YEL BRN	
1900-3	YEL BLU	
1900-4	YEL SLT	
800-1	YEL ORG	
RESERVED	YEL WHT	
RESERVED	YEL PPL	

2.5 FREQUENCY	INDICATOR		ID
2500 -1	YEL	WHT	GRN
2500 -2	YEL	WHT	RED
2500 -3	YEL	WHT	BRN
2500 -4	YEL	WHT	BLU
2500 -5	YEL	WHT	SLT
2500 -6	YEL	WHT	ORG
2500 -7	YEL	WHT	WHT
2500 -8	YEL	WHT	PPL



PLANS PREPARED FOR:

6580 Sprint Parkway
Overland Park, Kansas 66251

PLANS PREPARED BY:

1033 Watervliet Shaker Rd
Albany, NY 12205
Office # (518) 690-0790
Fax # (518) 690-0793

JOB NUMBER 340-000

MLA PARTNER:

116 HUNTINGTON AVENUE, 11TH FLOOR
BOSTON, MA 02116

ENGINEERING LICENSE:

DRAWING NOTICE:

THESE DOCUMENTS ARE CONFIDENTIAL AND ARE THE SOLE PROPERTY OF SPRINT AND MAY NOT BE REPRODUCED, DISSEMINATED OR REDISTRIBUTED WITHOUT THE EXPRESS WRITTEN CONSENT OF SPRINT.

REVISIONS:	DESCRIPTION	DATE	BY	REV
REVISED PER COMMENT		3/13/14	MAP	B
ISSUED FOR REVIEW		1/28/14	AHS	A

SITE NAME:

WINSTED -
PLATT HILL RD

SITE CASCADE:

CT73XC001

SITE ADDRESS:

428 PLATT HILL ROAD
WINSTED, CT 06098

SHEET DESCRIPTION:

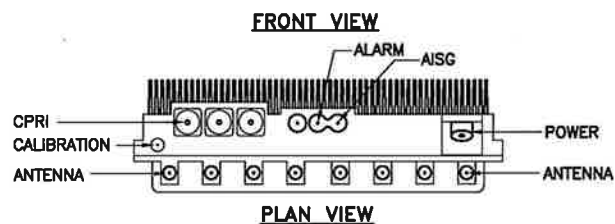
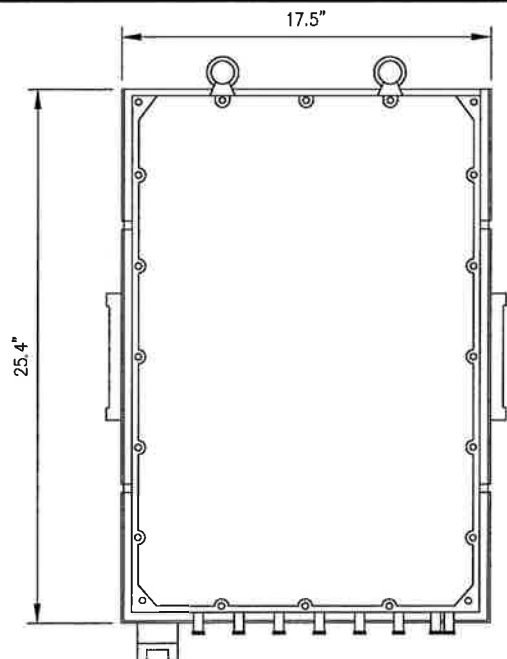
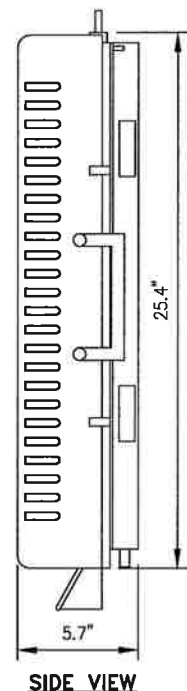
COLOR CODING
AND NOTES

SHEET NUMBER:

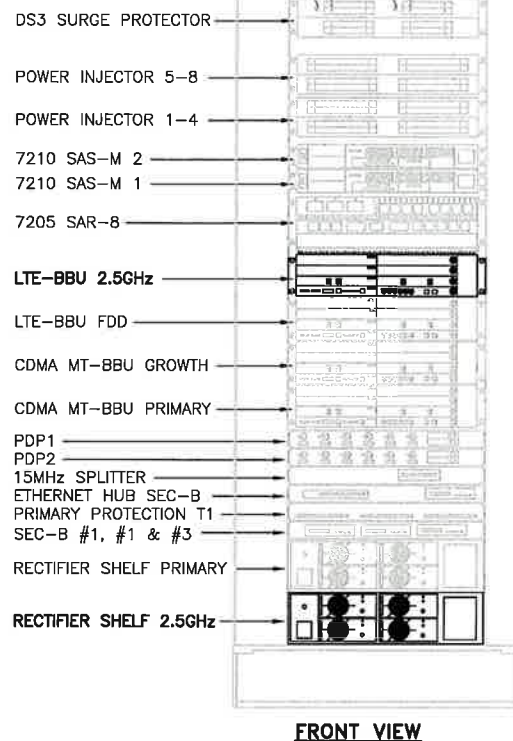
A-4

RRU: ALCATEL LUCENT TD-RRH8X20

COLOR: LIGHT GREY
WEIGHT: 70 LBS.



NOTES
COMPLY WITH MANUFACTURERS INSTRUCTIONS TO ENSURE THAT ALL RRU'S RECEIVE ELECTRICAL POWER WITHIN 24 HOURS OF BEING REMOVED FROM THE MANUFACTURER'S PACKAGING. DO NOT OPEN RRU PACKAGES IN THE RAIN.



2.5 RRU

NO SCALE

1

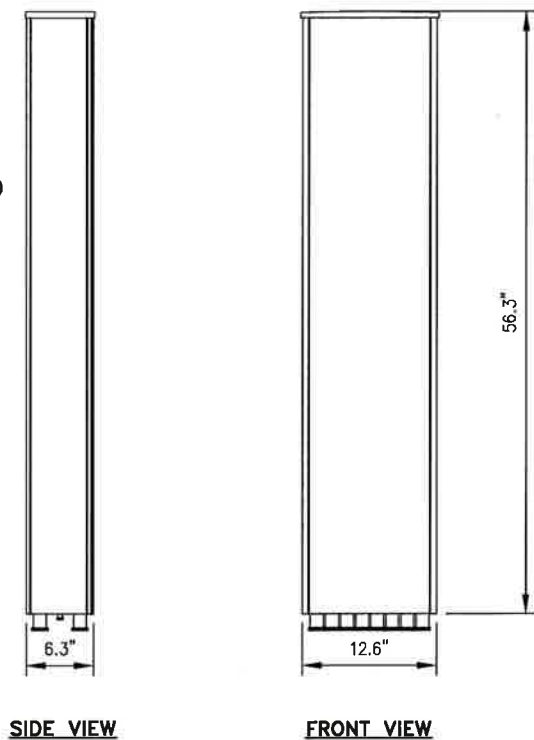
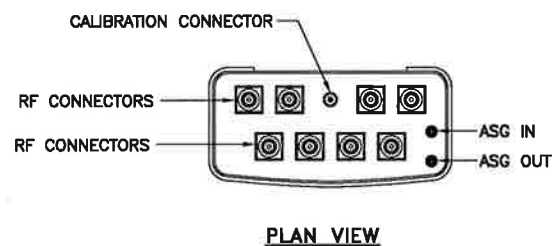
EXISTING MMBS WITH 2.5 EQUIPMENT

NO SCALE

2

ANTENNA: RFS APXVTM14-C-120

RADOME MATERIAL: ASA
RADOME COLOR: LIGHT GREY
DIMENSIONS, HxWxD.in(mim): 56.3"x12.6"x6.3" (1430x320x160mm)
WEIGHT: 52.9 lbs
CONNECTORS: (8) 4.1/9.5 DIN FEMALE
(1) NF - CALIBRATION CONNECTOR



2.5 ANTENNA

NO SCALE

3

DETAIL NOT USED

NO SCALE

4

PLANS PREPARED FOR:



PLANS PREPARED BY:

INFINIGY Design. Build. Deliver.

1033 Watervliet Shaker Rd
Albany, NY 12205
Office # (518) 690-0790
Fax # (518) 690-0793

JOB NUMBER 340-000

MLA PARTNER:

AMERICAN TOWER CORPORATION

116 HUNTINGTON AVENUE, 11TH FLOOR
BOSTON, MA 02116

ENGINEERING LICENSE:



DRAWING NOTICE:

THESE DOCUMENTS ARE CONFIDENTIAL AND ARE THE SOLE PROPERTY OF SPRINT AND MAY NOT BE REPRODUCED, DISSEMINATED OR REDISTRIBUTED WITHOUT THE EXPRESS WRITTEN CONSENT OF SPRINT.

REVISIONS:

DESCRIPTION	DATE	BY	REV
REVISED PER COMMENT	3/13/14	MAP	B
ISSUED FOR REVIEW	1/28/14	AHS	A

SITE NAME:

WINSTED -
PLATT HILL RD

SITE CASCADE:

CT73XC001

SITE ADDRESS:

428 PLATT HILL ROAD
WINSTED, CT 06098

SHEET DESCRIPTION:

EQUIPMENT &
MOUNTING DETAILS

SHEET NUMBER:

A-5

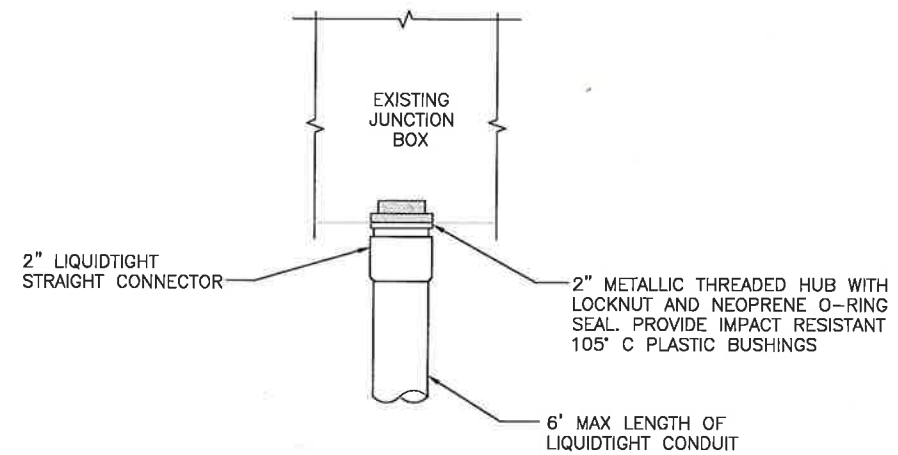
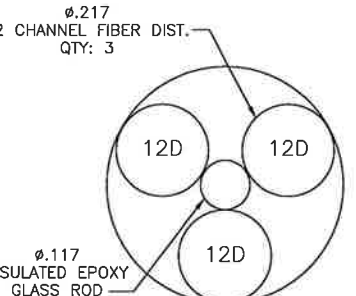
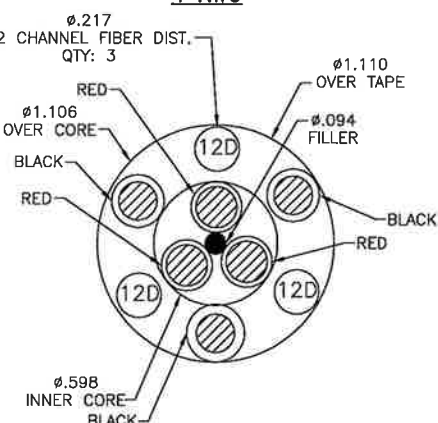
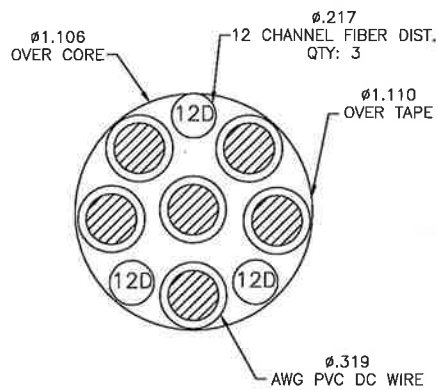
RFS HYBRIFLEX RISER CABLE SCHEDULE

Fiber Only (Existing DC Power)	Hybrid cable MN: HB058-M12-050F 12x multi-mode fiber pairs, Top: Outdoor protected connectors, Bottom: LC Connectors, 5/8 cable, 50 ft	50 ft
	MN: HB058-M12-075F	75 ft
	MN: HB058-M12-100F	100 ft
	MN: HB058-M12-125F	125 ft
	MN: HB058-M12-150F	150 ft
	MN: HB058-M12-175F MN: HB058-M12-200F	175 ft 200 ft
8 AWG Power	Hybrid cable MN: HB114-08U3M12-050F 3x 8 AWG power pairs, 12x multi-mode fiber pairs, Outdoor rated connectors & LC Connectors, 1 1/4 cable, 50 ft	50 ft
	MN: HB114-08U3M12-075F	75 ft
	MN: HB114-08U3M12-100F	100 ft
	MN: HB114-08U3M12-125F	125 ft
	MN: HB114-08U3M12-150F	150 ft
	MN: HB114-08U3M12-175F MN: HB114-08U3M12-200F	175 ft 200 ft
6 AWG Power	Hybrid cable MN: HB114-13U3M12-225F 3x 6 AWG power pair, 12x multi-mode fiber pairs, Outdoor rated connectors & LC Connectors, 1 1/4 cable, 225 ft	225 ft
	MN: HB114-13U3M12-250F	250 ft
	MN: HB114-13U3M12-275F	275 ft
	MN: HB114-13U3M12-300F	300 ft
4 AWG Power	Hybrid cable MN: HB114-21U3M12-325F 3x 4 AWG power pair, 12x multi-mode fiber pairs, Outdoor rated connectors & LC Connectors, 1 1/4 cable, 325 ft	325 ft
	MN: HB114-21U3M12-350F	350 ft
	MN: HB114-21U3M12-375F	375 ft

RFS HYBRIFLEX JUMPER CABLE SCHEDULE

Fiber Only	Hybrid Jumper cable MN: HBF012-M3-5F1 5 ft, 3x multi-mode fiber pairs, Outdoor & LC connectors, 1/2 cable	5 ft
	MN: HBF012-M3-10F1	10 ft
	MN: HBF012-M3-15F1	15 ft
	MN: HBF012-M3-20F1	20 ft
	MN: HBF012-M3-25F1	25 ft
	MN: HBF012-M3-30F1	30 ft
8 AWG Power	Hybrid Jumper cable MN: HBF058-08U1M3-5F1 5 ft, 1x 8 AWG power pair, 3x multi-mode fiber pairs, Outdoor & LC Connectors, 5/8 cable	5 ft
	MN: HBF058-08U1M3-10F1	10 ft
	MN: HBF058-08U1M3-15F1	15 ft
	MN: HBF058-08U1M3-20F1	20 ft
	MN: HBF058-08U1M3-25F1	25 ft
	MN: HBF058-08U1M3-30F1	30 ft
6 AWG Power	Hybrid Jumper cable MN: HBF058-13U1M3-5F1 5 ft, 1x 6 AWG power pair, 3x multi-mode fiber pairs, Outdoor & LC Connectors, 5/8 cable	5 ft
	MN: HBF058-13U1M3-10F1	10 ft
	MN: HBF058-13U1M3-15F1	15 ft
	MN: HBF058-13U1M3-20F1	20 ft
	MN: HBF058-13U1M3-25F1	25 ft
	MN: HBF058-13U1M3-30F1	30 ft
4 AWG Power	Hybrid Jumper cable MN: HBF078-21U1M3-5F1 5 ft, 1x 4 AWG power pair, 3x multi-mode fiber pairs, Outdoor & LC Connectors, 7/8 cable	5 ft
	MN: HBF078-21U1M3-10F1	10 ft
	MN: HBF078-21U1M3-15F1	15 ft
	MN: HBF078-21U1M3-20F1	20 ft
	MN: HBF078-21U1M3-25F1	25 ft
	MN: HBF078-21U1M3-30F1	30 ft

NOTE:
SPRINT CM TO CONFIRM HYBRID OR FIBER RISER CABLE
AND HYBRID OR FIBER JUMPER CABLE MODEL NUMBERS IF
HYBRID CABLES ARE REQUIRED BEFORE PREPARING BOM.



FIBER JUNCTION BOX PENETRATION

NO SCALE 2

2.5 CABLE CROSS SECTION DATA

NO SCALE 1

DETAIL NOT USED

NO SCALE 3

PLANS PREPARED FOR:

6580 Sprint Parkway
Overland Park, Kansas 66251

PLANS PREPARED BY:

Design. Build. Deliver.

1033 Watervliet Shaker Rd
Albany, NY 12205
Office # (518) 690-0790
Fax # (518) 690-0793

JOB NUMBER 340-000

MLA PARTNER:

116 HUNTINGTON AVENUE, 11TH FLOOR
BOSTON, MA 02116

ENGINEERING LICENSE:

DRAWING NOTICE:

THESE DOCUMENTS ARE CONFIDENTIAL AND ARE THE SOLE PROPERTY OF SPRINT AND MAY NOT BE REPRODUCED, DISSEMINATED OR REDISTRIBUTED WITHOUT THE EXPRESS WRITTEN CONSENT OF SPRINT.

REVISIONS:

DESCRIPTION	DATE	BY	REV

REVISED PER COMMENT 3/13/14 MAP B
ISSUED FOR REVIEW 1/26/14 AHS A

SITE NAME:
WINSTED - PLATT HILL RD

SITE CASCADE:
CT73XC001

SITE ADDRESS:
428 PLATT HILL ROAD
WINSTED, CT 06098

SHEET DESCRIPTION:
CIVIL DETAILS

SHEET NUMBER:
A-6



DRAWING NOTICE:
 THESE DOCUMENTS ARE CONFIDENTIAL AND ARE THE SOLE PROPERTY OF SPRINT AND MAY NOT BE REPRODUCED, DISSEMINATED OR REDISTRIBUTED WITHOUT THE EXPRESS WRITTEN CONSENT OF SPRINT.

REVISIONS:

DESCRIPTION	DATE	BY	REV
REVISED PER COMMENT	3/13/14	MAP	B
ISSUED FOR REVIEW	1/28/14	AHS	A

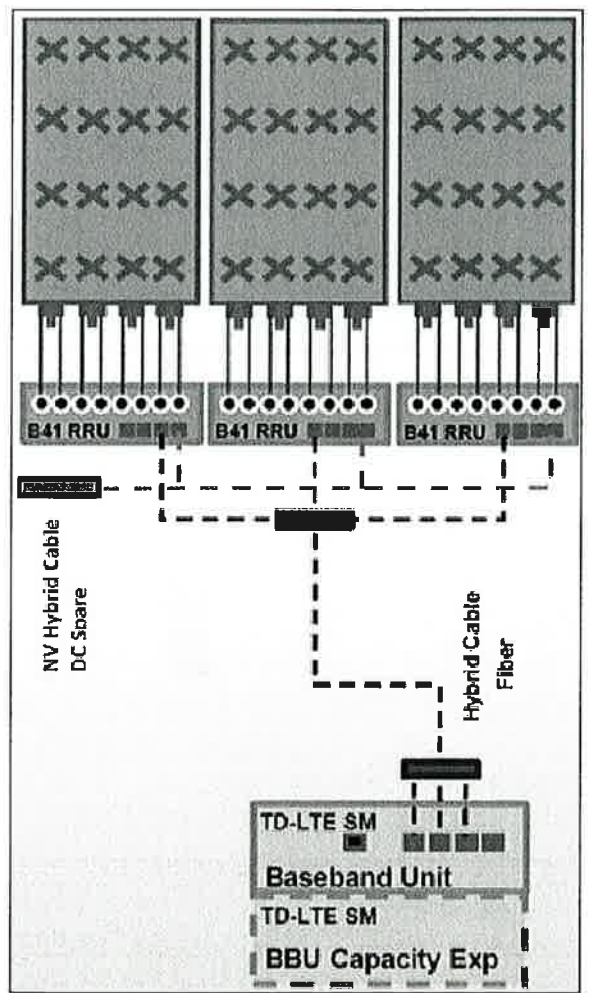
SITE NAME:
WINSTED - PLATT HILL RD

SITE CASCADE:
CT73XC001

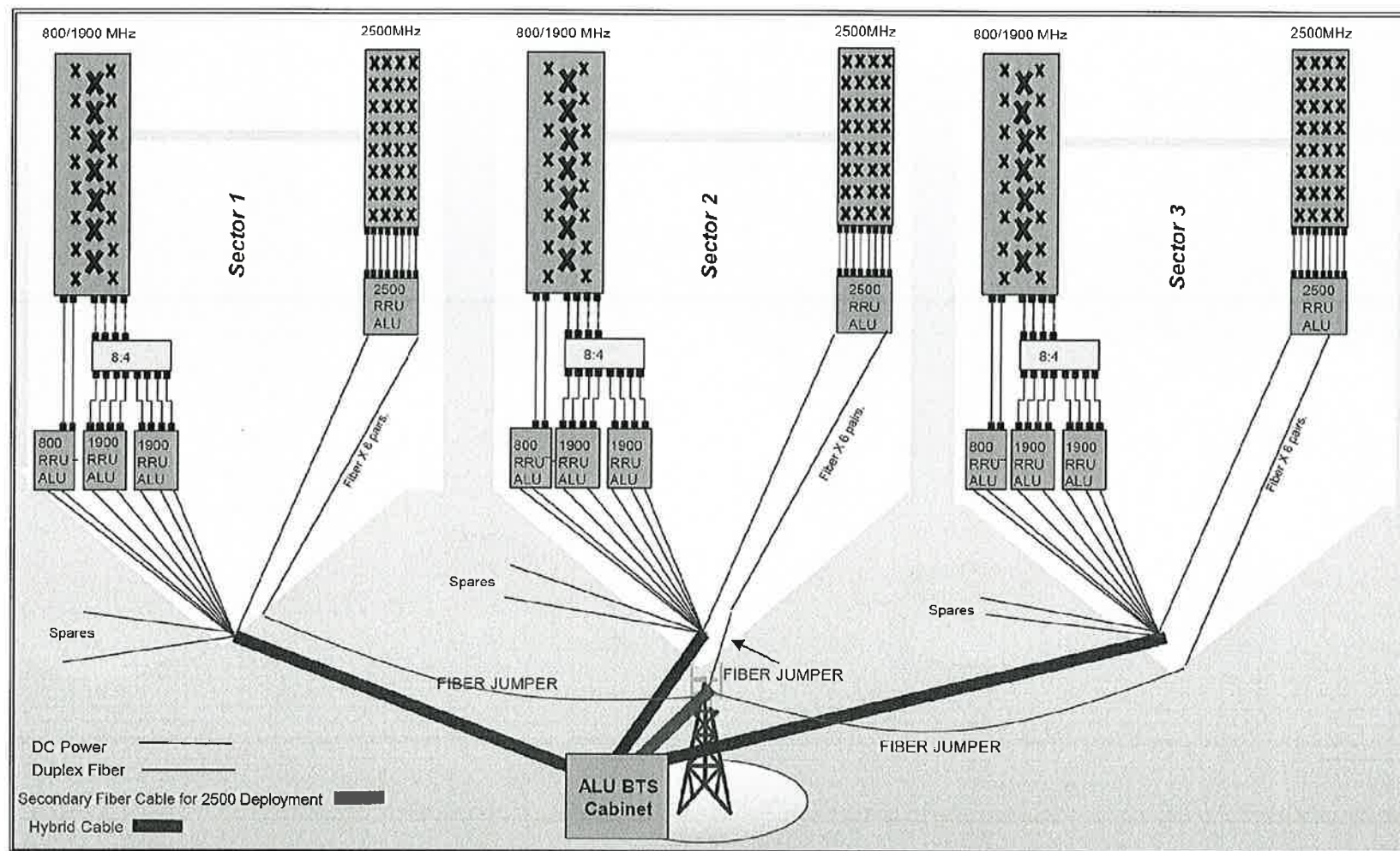
SITE ADDRESS:
 428 PLATT HILL ROAD
 WINSTED, CT 06098

SHEET DESCRIPTION:
PLUMBING DIAGRAM

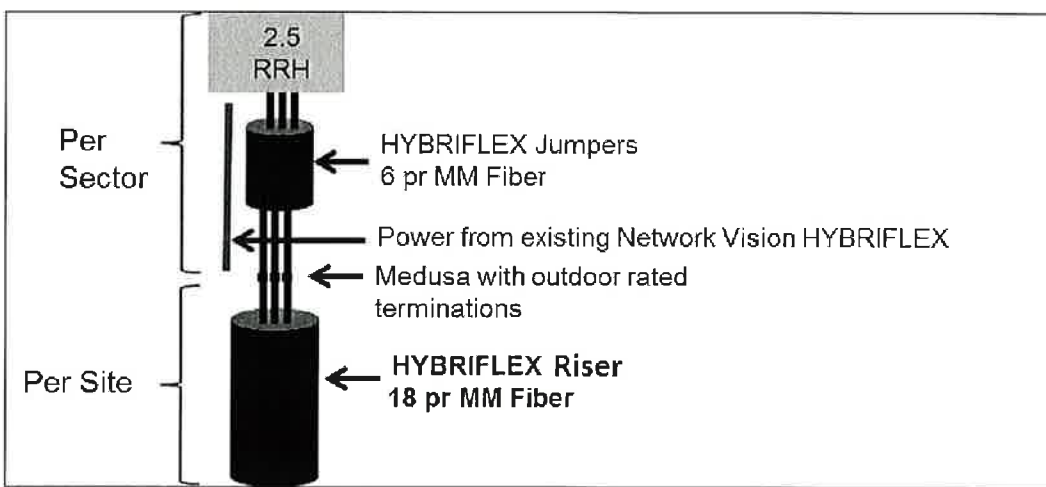
SHEET NUMBER:
A-7



ALU 2.5 ALU SCENARIO 1



RAN WIRING DIAGRAM

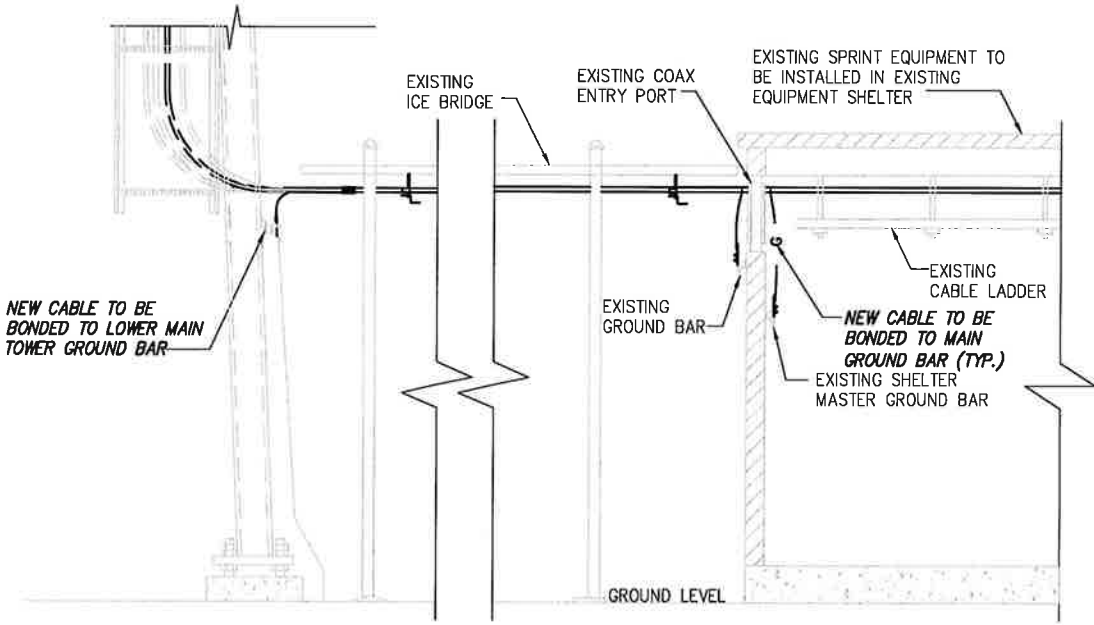
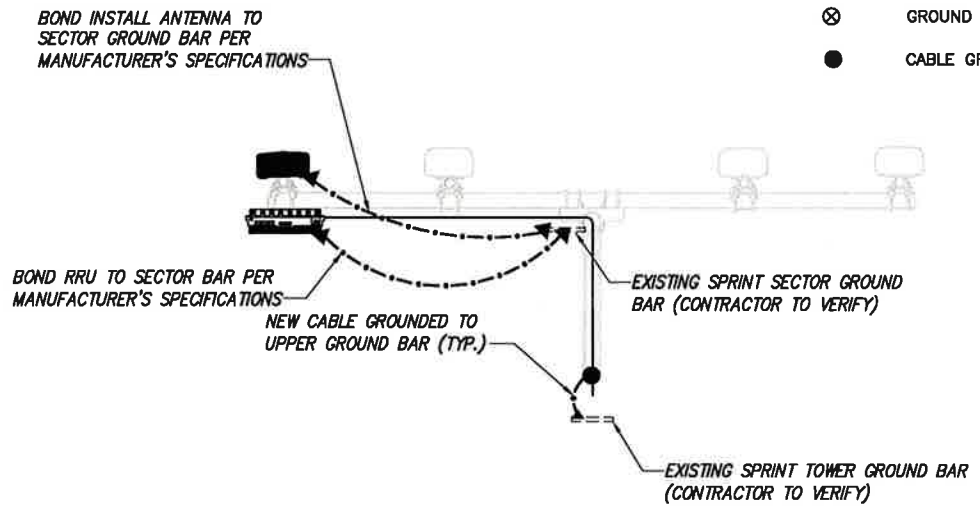


RF 2.5 ALU SCENARIO 1

PLAN NOT USED

NO SCALE 1

- LEGEND:**
- ○ — EXISTING GROUND RING
 - CADWELD CONNECTION (EXOTHERMIC WELD)
 - ▲ MECHANICAL CONNECTION
 - ⊗ GROUND ROD
 - CABLE GROUND KIT



NOTE:
 DEPICTION IS FOR CONCEPTUAL PURPOSES ONLY. CONTRACTOR IS TO FIELD VERIFY PRIOR TO CONSTRUCTION

DRAWING NOTICE:
 THESE DOCUMENTS ARE CONFIDENTIAL AND ARE THE SOLE PROPERTY OF SPRINT AND MAY NOT BE REPRODUCED, DISSEMINATED OR REDISTRIBUTED WITHOUT THE EXPRESS WRITTEN CONSENT OF SPRINT.

REVISIONS:

DESCRIPTION	DATE	BY	REV
REVISED PER COMMENT	3/13/14	MAP	B
ISSUED FOR REVIEW	1/28/14	AHS	A

SITE NAME:
WINSTED - PLATT HILL RD

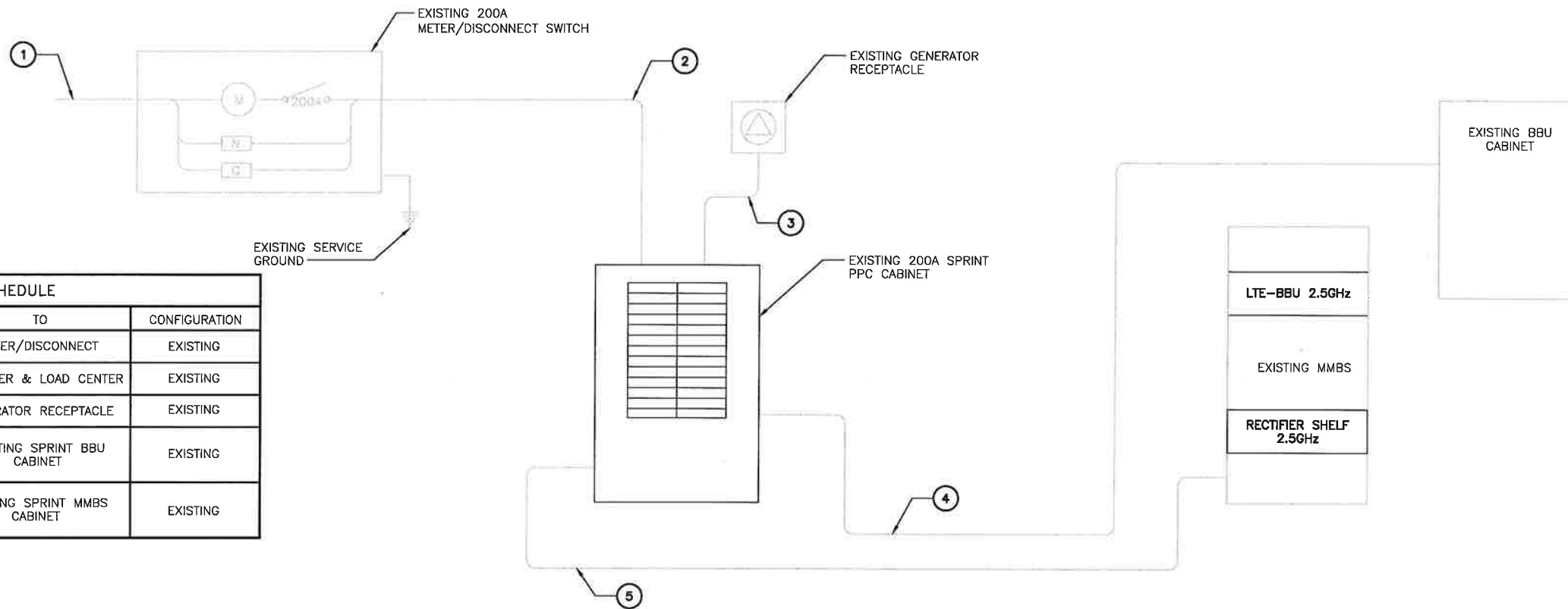
SITE CASCADE:
CT73XC001

SITE ADDRESS:
 428 PLATT HILL ROAD
 WINSTED, CT 06098

SHEET DESCRIPTION:
ELECTRICAL & GROUNDING PLAN

SHEET NUMBER:
E-1

NOTES
 CG SHALL REFERENCE ALL SPECS FOR "CONNECTING THE POWER SUPPLY" OF THE NEW INSTALLATION DOCUMENTS, FOR ALL CONNECTION SPECIFICATIONS.

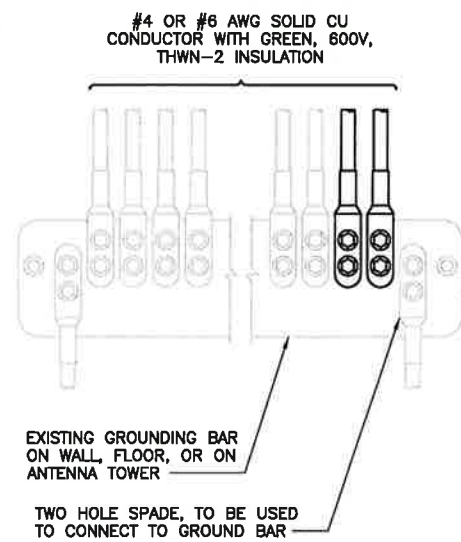


CIRCUIT SCHEDULE			
NO	FROM	TO	CONFIGURATION
①	UTILITY SOURCE	METER/DISCONNECT	EXISTING
②	METER/DISCONNECT	TRANSFER & LOAD CENTER	EXISTING
③	TRANSFER & LOAD CENTER	GENERATOR RECEPTACLE	EXISTING
④	TRANSFER & LOAD CENTER	EXISTING SPRINT BBU CABINET	EXISTING
⑤	TRANSFER & LOAD CENTER	EXISTING SPRINT MMBS CABINET	EXISTING

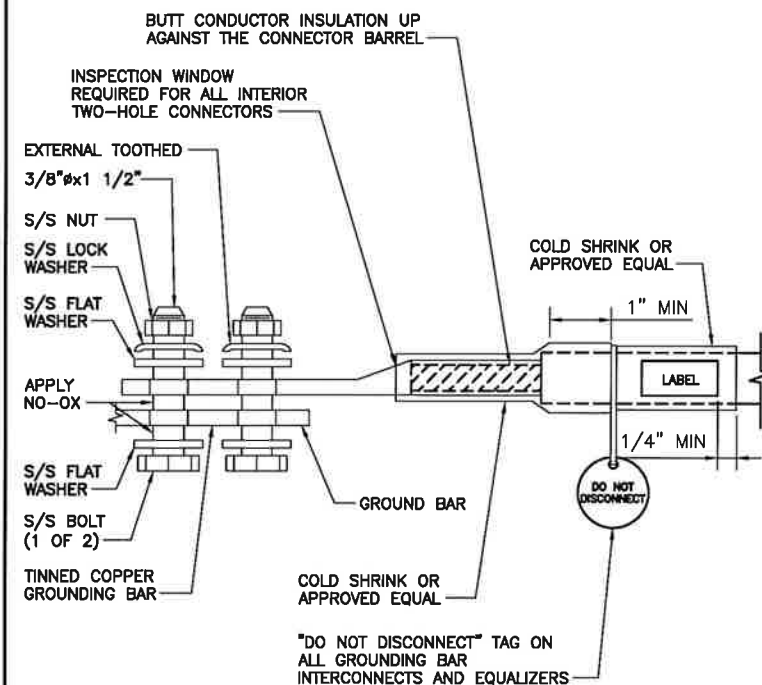
ELECTRICAL ONE-LINE DIAGRAM

NO SCALE

1



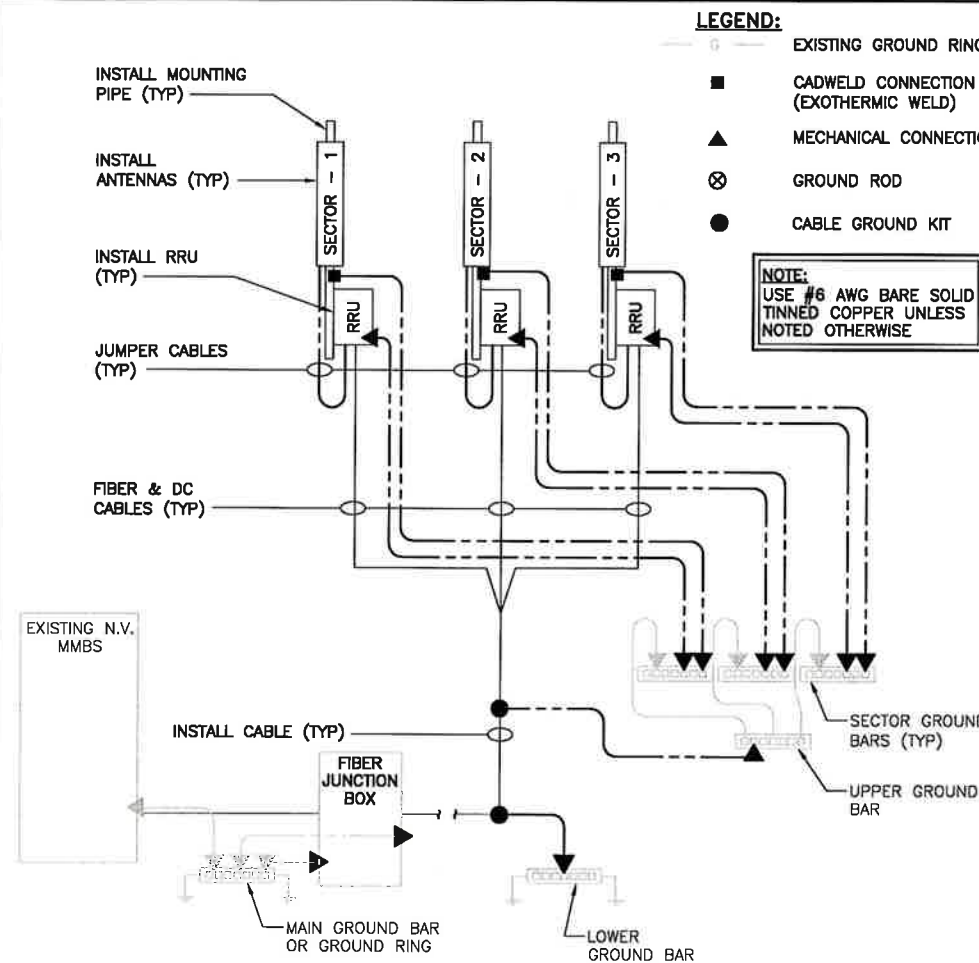
NOTES
 1. APPLY NO-OX TO LUG AND BAR CONTACT SURFACE. DO NOT COAT INLINE LUG.
 2. IF STOLEN GROUND BARS ARE ENCOUNTERED, CONTACT SPRINT CM FOR REPLACEMENT THREADED ROD KIT.



TWO HOLE LUG

NO SCALE

3



GROUNDING RISER DIAGRAM

NO SCALE

4

PLANS PREPARED FOR:
Sprint
 6580 Sprint Parkway
 Overland Park, Kansas 66251

PLANS PREPARED BY:
INFINIGY Design. Build. Deliver.
 1033 Waterlily Shaker Rd
 Albany, NY 12205
 Office # (518) 690-0790
 Fax # (518) 690-0793
 JOB NUMBER 340-000

MLA PARTNER:
AMERICAN TOWER CORPORATION
 116 HUNTINGTON AVENUE, 11TH FLOOR
 BOSTON, MA 02116

ENGINEERING LICENSE:

 LICENSED PROFESSIONAL ENGINEER
 No. 24705

DRAWING NOTICE:
 THESE DOCUMENTS ARE CONFIDENTIAL AND ARE THE SOLE PROPERTY OF SPRINT AND MAY NOT BE REPRODUCED, DISSEMINATED OR REDISTRIBUTED WITHOUT THE EXPRESS WRITTEN CONSENT OF SPRINT.

REVISIONS:	DESCRIPTION	DATE	BY	REV
REVISED PER COMMENT		3/13/14	MAP	B
ISSUED FOR REVIEW		1/28/14	AHS	A

SITE NAME:
WINSTED - PLATT HILL RD

SITE CASCADE:
CT73XC001

SITE ADDRESS:
 428 PLATT HILL ROAD
 WINSTED, CT 06098

SHEET DESCRIPTION:
ELECTRICAL & GROUNDING DETAILS

SHEET NUMBER:
E-2

INSTALLATION OF GROUNDING CONDUCTOR TO GROUNDING BAR

NO SCALE

2