

STATE OF CONNECTICUT

CONNECTICUT SITING COUNCIL

Ten Franklin Square, New Britain, CT 06051

Phone: (860) 827-2935 Fax: (860) 827-2950

E-Mail: siting.council@ct.gov

Internet: ct.gov/csc

Daniel F. Caruso

Chairman

October 14, 2008

Kenneth C. Baldwin, Esq.
Robinson & Cole LLP
280 Trumbull Street
Hartford, CT 06103-3597

RE: **EM-VER-162-080917** – Cellco Partnership d/b/a Verizon Wireless notice of intent to modify an existing telecommunications facility located at Oakdale Avenue, Winchester, Connecticut.

Dear Attorney Baldwin:

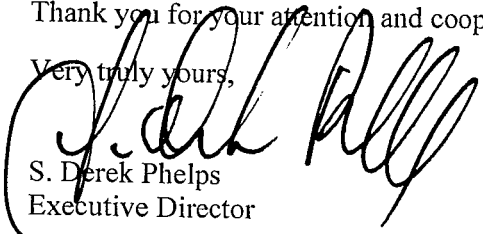
The Connecticut Siting Council (Council) hereby acknowledges your notice to modify this existing telecommunications facility, pursuant to Section 16-50j-73 of the Regulations of Connecticut State Agencies with the condition that any remaining antenna mounts and/or platform at the 174-foot level of the tower are removed within one year of the date of this acknowledgement unless they can be utilized by another carrier within that time period.

The proposed modifications are to be implemented as specified here and in your notice dated September 17, 2008, including the placement of all necessary equipment and shelters within the tower compound. The modifications are in compliance with the exception criteria in Section 16-50j-72 (b) of the Regulations of Connecticut State Agencies as changes to an existing facility site that would not increase tower height, extend the boundaries of the tower site, increase noise levels at the tower site boundary by six decibels, and increase the total radio frequencies electromagnetic radiation power density measured at the tower site boundary to or above the standard adopted by the State Department of Environmental Protection pursuant to General Statutes § 22a-162. This facility has also been carefully modeled to ensure that radio frequency emissions are conservatively below State and federal standards applicable to the frequencies now used on this tower.

This decision is under the exclusive jurisdiction of the Council. Please be advised that the validity of this action shall expire one year from the date of this letter. Any additional change to this facility will require explicit notice to this agency pursuant to Regulations of Connecticut State Agencies Section 16-50j-73. Such notice shall include all relevant information regarding the proposed change with cumulative worst-case modeling of radio frequency exposure at the closest point of uncontrolled access to the tower base, consistent with Federal Communications Commission, Office of Engineering and Technology, Bulletin 65. Any deviation from this format may result in the Council implementing enforcement proceedings pursuant to General Statutes § 16-50u including, without limitation, imposition of expenses resulting from such failure and of civil penalties in an amount not less than one thousand dollars per day for each day of construction or operation in material violation.

Thank you for your attention and cooperation.

Very truly yours,


S. Derek Phelps
Executive Director

SDP/MP/cm

c: The Honorable Anthony P. LaRosa, Mayor, Town of Rocky Hill
Kimberly Ricci, Director of Planning, Town of Rocky Hill
American Tower

EM-VER-162-080917

280 Trumbull Street
Hartford, CT 06103-3597
Main (860) 275-8200
Fax (860) 275-8299
kbaldwin@rc.com
Direct (860) 275-8345

ORIGINAL

September 17, 2008



CONNECTICUT
SITING COUNCIL

Via Hand Delivery

S. Derek Phelps
Executive Director
Connecticut Siting Council
10 Franklin Square
New Britain, CT 06051

Re: **Notice of Exempt Modification – Antenna Swap
Oakdale Avenue, Winchester, Connecticut**

Dear Mr. Phelps:

Cellco Partnership d/b/a Verizon Wireless (“Cellco”) currently maintains twelve PCS antennas at the 125-foot level on an existing 180-foot tower off Oakdale Avenue in Winchester, Connecticut. The tower is owned by American Tower Corporation. The Council approved Cellco’s shared use of this facility on November 20, 2003. Other carriers sharing this tower include AT&T at 184 feet; the Connecticut Department of Public Safety at 180 feet and 142 feet; USA Mobility at 180 feet; Alltel at 174 feet; and Sprint Nextel at 134 feet and 114 feet.

As you and the Council are aware, on May 30, 2008, Cellco acquired Alltel’s CT-1 RSA cellular license for Litchfield County Connecticut. Cellco now intends to replace six (6) of its twelve PCS antennas at the 125-foot level with six (6) cellular antennas and remove Alltel’s twelve cellular antennas from the 174-foot level on the existing tower. Attached behind Tab 1 are the specifications for the proposed replacement antennas.

Please accept this letter as notification pursuant to R.C.S.A. § 16-50j-73, for construction that constitutes an exempt modification pursuant to R.C.S.A. § 16-50j-72(b)(2). In accordance with R.C.S.A. § 16-50j-73, a copy of this letter is being sent to Kenneth J. Fracasso, Mayor, Mayor of the Town of Winchester. Pursuant to a Council directive, a copy of this letter is being sent to Richard D. Stow and William P. Stow, the owners of the property on which the tower is located.

The planned modifications to the facility fall squarely within those activities explicitly provided for in R.C.S.A. § 16-50j-72(b)(2).



Law Offices

BOSTON

HARTFORD

NEW LONDON

STAMFORD

WHITE PLAINS

NEW YORK CITY

SARASOTA

www.rc.com

HART1-1488615-1

ROBINSON & COLE^{LLP}

S. Derek Phelps
September 17, 2008
Page 2

1. The proposed modifications will not result in the increase in the overall height of the existing structure. Cellco's replacement antennas will be located at the 125-foot level of the 180-foot tower.

2. The proposed modifications will not require a change to any of Cellco's ground-mounted equipment and, therefore, no extension of the site boundaries is required. Alltel's ground mounted equipment will be removed from of the existing site compound.

3. The proposed modifications will not increase noise levels at the facility by six decibels or more.

4. The operation of the replacement antennas will not increase radio frequency (RF) power density levels at the facility to a level at or above the Federal Communications Commission (FCC) adopted safety standard. A cumulative power density table for the facility is included behind Tab 2.

Also attached is a Structural Analysis Report confirming that the tower can support the proposed modifications. (See Tab 3).

For the foregoing reasons, Cellco respectfully submits that the proposed modifications to the above-referenced telecommunications facility constitutes an exempt modification under R.C.S.A. § 16-50j-72(b)(2).

Sincerely,



Kenneth C. Baldwin

Enclosures

Copy to:

Kenneth J. Fracasso, Winchester Mayor
Richard D. Stow and William P. Stow
Sandy M. Carter



LPA-80080/6CF

When ordering replace "___" with connector type.

Mechanical specifications

Length	1800 mm	70.9 in
Width	140 mm	5.5 in
Depth	335 mm	13.2 in
Depth with z-bracket	375 mm	14.8 in
4) Weight	9.5 kg	21.0 lbs
Wind Area		
Fore/Aft	0.25 m ²	2.7 ft ²
Side	0.60 m ²	6.5 ft ²
Rated Wind Velocity (Safety factor 2.0)	>216 km/hr	>134 mph
Wind Load @ 100 mph (161 km/hr)		
Fore/Aft	415 N	93.3 lbs
Side	870 N	195.6 lbs

Antenna consisting of aluminum alloy with brass feedlines covered by a UV safe fiberglass radome.

Mounting and Downtilting

Mounting brackets attach to a pipe diameter of Ø50-102 mm (2.0-4.0 in). If the lock-down brace is used, the maximum diameter is Ø88.9 mm (3.5 in)

Mounting Bracket & Downtilt Bracket Kit
#21699999

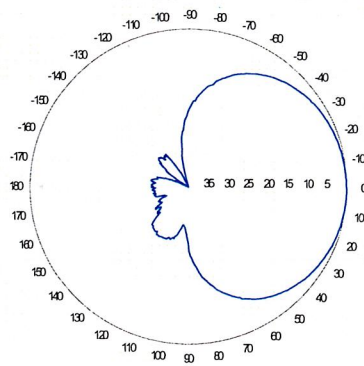
Electrical specifications

Frequency Range	806-960 MHz
Impedance	50Ω
3) Connector(s)	NE or E-DIN 1 port / center
1) VSWR	≤ 1.4:1
Polarization	Vertical
1) Gain	14 dBd
2) Power Rating	500 W
1) Half Power Angle	
H-Plane	80°
E-Plane	10°
1) Electrical Downtilt	0°
1) Null Fill	10%
Lightning Protection	Direct Ground

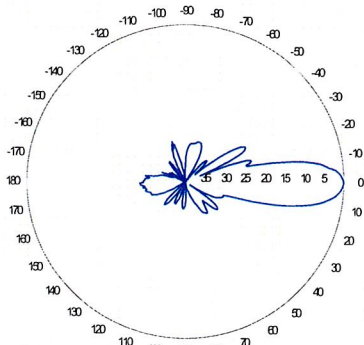
- 1) Typical values.
- 2) Power rating limited by connector only.
- 3) NE indicates an elongated N connector.
E-DIN indicates an elongated DIN connector.
- 4) The antenna weight listed above does not include the bracket weight.

Improvements to mechanical and/or electrical performance of the antenna may be made without notice.

Radiation pattern¹⁾



Horizontal

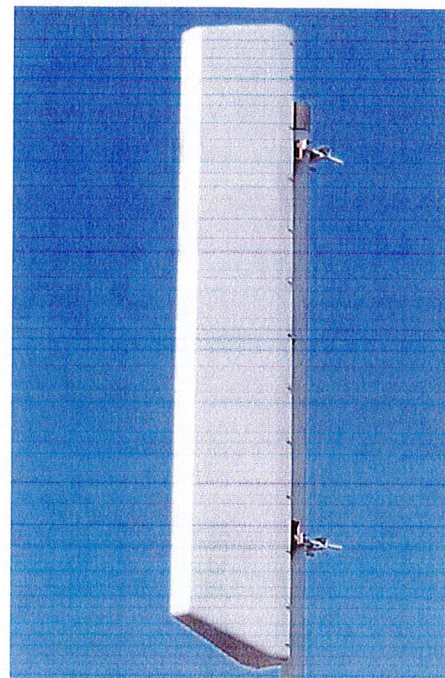


Vertical

Featuring upper side lobe suppression.

Radiation patterns for all antennas are measured with the antenna mounted on a fiberglass pole.

Mounting on a metal pole will typically improve the Front-to-Back ratio.



Amphenol Antel's Exclusive 3T (True Transmission Line Technology) Antenna Design:

- True log-periodic design allows for superior front-to-side characteristics to minimize sector overlap.
- Unique feedline design eliminates the need for conventional solder joints in the signal path.
- A non-collinear system with access to every radiating element for broad bandwidth and superior performance.
- Air as insulation for virtually no internal signal loss.

This Amphenol Antel antenna is under a five-year limited warranty for repair or replacement.

Antenna available with center-fed connector only.

CF Denotes a Center-Fed Connector.

806-960 MHz

Vertically Polarized, Log Periodic 63° / 14.5 dBd

LPA-80063/6CF

When ordering replace "___" with connector type.

Mechanical specifications

Length	1800 mm	70.9 in
Width	380 mm	15.0 in
Depth	332 mm	13.1 in
Depth with z-bracket	372 mm	14.6 in
4) Weight	12.3 kg	27.0 lbs
Wind Area		
Fore/Aft	0.68 m ²	7.4 ft ²
Side	0.60 m ²	6.5 ft ²
Rated Wind Velocity (Safety factor 2.0)	>219 km/hr	>136 mph
Wind Load @ 100 mph (161 km/hr)		
Fore/Aft	993 N	223 lbs
Side	872 N	196 lbs

Antenna consisting of aluminum alloy with brass feedlines covered by a UV safe fiberglass radome.

Mounting and Downtilting

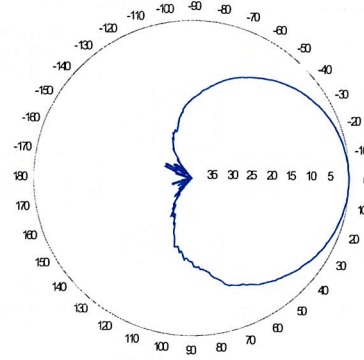
Mounting brackets attach to a pipe diameter of Ø50-102 mm (2.0-4.0 in). If the lock-down brace is used, the maximum diameter is Ø88.9 mm (3.5 in)

Mounting Bracket & Downtilt Bracket Kit
#21699999

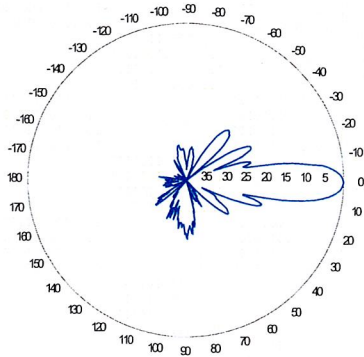
Electrical specifications

Frequency Range	806-960 MHz
Impedance	50Ω
3) Connector(s)	NE or E-DIN 1 port / center
1) VSWR	≤ 1.4:1
Polarization	Vertical
1) Gain	14.5 dBd
2) Power Rating	500 W
1) Half Power Angle	
H-Plane	63°
E-Plane	10°
1) Electrical Downtilt	0°
1) Null Fill	10%
Lightning Protection	Direct Ground

Radiation pattern¹⁾



Horizontal

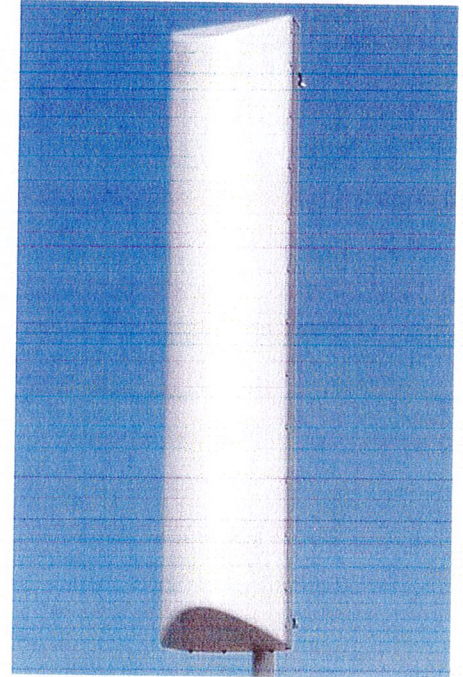


Vertical

Featuring upper side lobe suppression.

Radiation patterns for all antennas are measured with the antenna mounted on a fiberglass pole.

Mounting on a metal pole will typically improve the Front-to-Back ratio.



Amphenol Antel's Exclusive 3T (True Transmission Line Technology) Antenna Design:

- True log-periodic design allows for superior front-to-side characteristics to minimize sector overlap.
- Unique feedline design eliminates the need for conventional solder joints in the signal path.
- A non-collinear system with access to every radiating element for broad bandwidth and superior performance.
- Air as insulation for virtually no internal signal loss.

This Amphenol Antel antenna is under a five-year limited warranty for repair or replacement.

Antenna available with center-fed connector only.

CF Denotes a Center-Fed Connector.

806-960 MHz

1) Typical values.
2) Power rating limited by connector only.
3) NE indicates an elongated N connector. E-DIN indicates an elongated DIN connector.
4) The antenna weight listed above does not include the bracket weight.

Improvements to mechanical and/or electrical performance of the antenna may be made without notice.



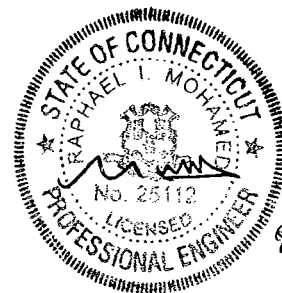
AMERICAN TOWER

Structural Analysis Report

Structure : 180 ft EEI Monopole
ATC Site Name : Winchester CT 3, CT
ATC Site Number : 302506
Proposed Carrier : Verizon
Carrier Site Name : Winchester East
Carrier Site Number : N/A
County : Litchfield
Eng. Number : 42343621
Date : August 26, 2008
Usage : 80% (Pole Shaft), 96% (Base Plate)
Portholes Required : No

Submitted by:
Zachary A. Medoff, E.I.
Design Engineer

American Tower Engineering Services
400 Regency Forest Drive
Cary, NC 27518
Phone: 919-468-0112



8/27/08

Introduction

The purpose of this report is to summarize results of the structural analysis performed on the 180 ft EEI Monopole located at 15 Oakdale Avenue, Winsted, CT 06098, Litchfield County (ATC site #302506). The tower was originally designed and manufactured by EEI (Job #7676, dated August 21, 2000).

Analysis

The tower was analyzed using Semaan Engineering Solutions, Inc., Software. The analysis assumes that the tower is in good, undamaged, and non-corroded condition.

Basic Wind Speed: 90 mph (3-Second Gust)
 Radial Ice: 40 mph (3-Second Gust) w/ 1 1/4" ice
 Code: ANSI/TIA-222-G / 2003 IBC w/ 2005 CT Supplement & 2008 CT Amendments

Antenna Loads

The following antenna loads were used in the tower analysis.

Existing Antennas

Elev. (ft)	Qty	Antennas	Mount	Coax (in)	Carrier
184.0	12	CSS DUO4-8670	Flat Low Profile Platform	(12) 1 5/8	AT&T Mobility
180.0	1	Yagi		(1) 1 5/8	CT Police Dept.
	1	10' Omni		(1) 7/8	USA Mobility
174.0	4	Antel LPD-7905/4	Flat Low Profile Platform	(12) 1 5/8	Alltel
	4	Nokia CS72993.07			
	2	Decibel 731DG85V1EXM			
142.0	1	56" Dipole	Side Arms	(1) 1/2	CT Police Dept.
	2	10' Omni		(4) 1 5/8	
134.0	9	Andrew DB980H90E-M	Flat Platform w/ Handrails	(9) 1 5/8	Sprint Nextel
114.5	12	Decibel DB844H90E-XY	Round Low Profile Platform	(12) 1 1/4	
46.5	1	Nokia CS72187.01	Pipe	(1) 1/2	AT&T Mobility

Proposed Antennas

Elev. (ft)	Qty	Antennas	Mount	Coax (in)	Carrier
125.0	2	Antel LPA-80063/6CF	Round Low Profile Platform	(12) 1 5/8	Verizon
	4	Antel LPA-80080/6CF			
	4	Decibel DB950F85E-M			
	2	Decibel DB950F65E-M			

Install proposed coax in place of existing Verizon lines.

Results

The maximum structure usage is: 96%

Additional exit and/or entry ports may be required to accommodate the running of the proposed lines to the proposed antennas. These additional ports **may not** be installed without installation drawings providing the location, size and welding requirements of each port.

To ensure compliance with all conditions of this structural analysis, port installation drawings shall be provided by American Tower's Engineering Department under a subsequent project.

Pole Reactions	Original Design Reactions	Factored Design Reactions*	Current Analysis Reactions	% Of Design
Moment (ft-kips)	3,377.9	4,560.2	3,305.8	73
Shear (kips)	28.4	38.3	26.9	70

* The design reactions are factored by 1.35 per ANSI/TIA-222-G, Sec. 15.5.1

The structure base reactions resulting from this analysis are acceptable when compared to the reactions shown on the original structure drawings, therefore no modification or reinforcement of the foundation will be required.

Conclusion

Based on the analysis results, the structure meets the requirements per ANSI/TIA-222-G and 2003 IBC with 2005 CT Supplement & 2008 CT Amendments. The tower and foundation can support the existing and proposed antennas with the TX line distribution as described in this report.

If you have any questions or require additional information, please call 919-465-6535.

Standard Conditions

All engineering services are performed on the basis that the information used is current and correct. This information may consist of, but is not necessary limited, to:

- Information supplied by the client regarding the structure itself, the antenna and feed line loading on the structure and its components, or other relevant information.
- Information from drawings in the possession of American Tower Corporation, or generated by field inspections or measurements of the structure.

It is the responsibility of the client to ensure that the information provided to ATC Engineering Services and used in the performance of our engineering services is correct and complete. In the absence of information to the contrary, we assume that all structures were constructed in accordance with the drawings and specifications and are in an un-corroded condition and have not deteriorated; and we, therefore, assume that their capacity has not significantly changed from the "as new" condition.

All services will be performed to the codes specified by the client, and we do not imply to meet any other codes or requirements unless explicitly agreed in writing. If wind and ice loads or other relevant parameters are to be different from the minimum values recommended by the codes, the client shall specify the exact requirement. In the absence of information to the contrary, all work will be performed in accordance with the latest relevant revision of ANSI/EIA-222.

All services are performed, results obtained, and recommendations made in accordance with generally accepted engineering principles and practices. ATC Engineering Services is not responsible for the conclusions, opinions and recommendations made by others based on the information we supply.

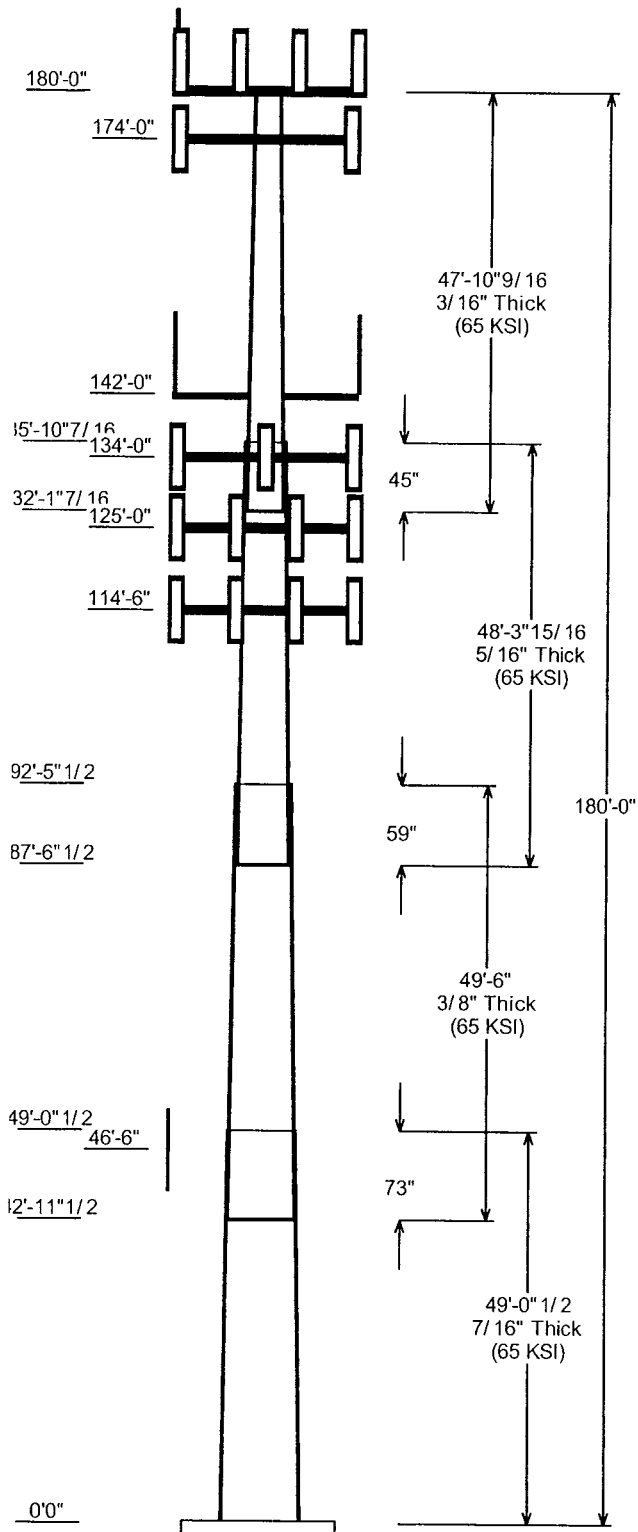
Job Information			
Pole :	302506	Code:	ANSI/TIA-222 Rev G
Description :	180 ft \square Monopole	Struct Class :	II
Client :	Verizon	Exposure :	B
Location :	Winchester CT 3, CT	Topo :	1
Shape :	18 Sides	Base Elev (ft):	0.00
Height :	180.00 (ft)	Taper:	0.219444(in/ft)

Sections Properties								
Shaft Section	Length (ft)	Diameter (in)		Thick Joint (in)	Type	Overlap Length (in)	Steel Taper (in/ft)	Grade (ksi)
		Across Top	Flats Bottom					
1	49.040	41.98	52.75	0.438		0.000	0.219444	65
2	49.500	33.21	44.07	0.375	Slip Joint	73.000	0.219444	65
3	48.330	24.30	34.91	0.313	Slip Joint	59.000	0.219444	65
4	47.880	15.00	25.50	0.188	Slip Joint	45.000	0.219444	65

Discrete Appurtenance				
Attach Elev (ft)	Force Elev (ft)	Qty	Description	
180.000	180.000	1	Yagi	
180.000	185.000	1	10' Omni	
180.000	184.000	12	CSS DUO4-8670	
180.000	180.000	1	Flat Low Profile Platform	
174.000	174.000	1	Flat Low Profile Platform	
174.000	174.000	4	Antel LPD-7905/4	
174.000	174.000	4	Nokia CS72993.07	
174.000	174.000	2	Decibel 731DG85V1EXM	
142.000	142.000	2	Side Arms	
142.000	142.000	1	56" Dipole	
142.000	147.000	2	10' Omni	
134.000	134.000	1	Flat Platform w/ Handrails	
134.000	134.000	9	Andrew DB980H90E-M	
125.000	125.000	1	Round Low Profile Platform	
125.000	125.000	2	Antel LPA-80063/6CF	
125.000	125.000	4	Antel LPA-80080/6CF	
125.000	125.000	4	Decibel DB950F85E-M	
125.000	125.000	2	Decibel DB950F65E-M	
114.500	114.500	1	Round Low Profile Platform	
114.500	114.500	12	Decibel DB844H90E-XY	
46.500	46.500	1	Nokia CS72187.01	

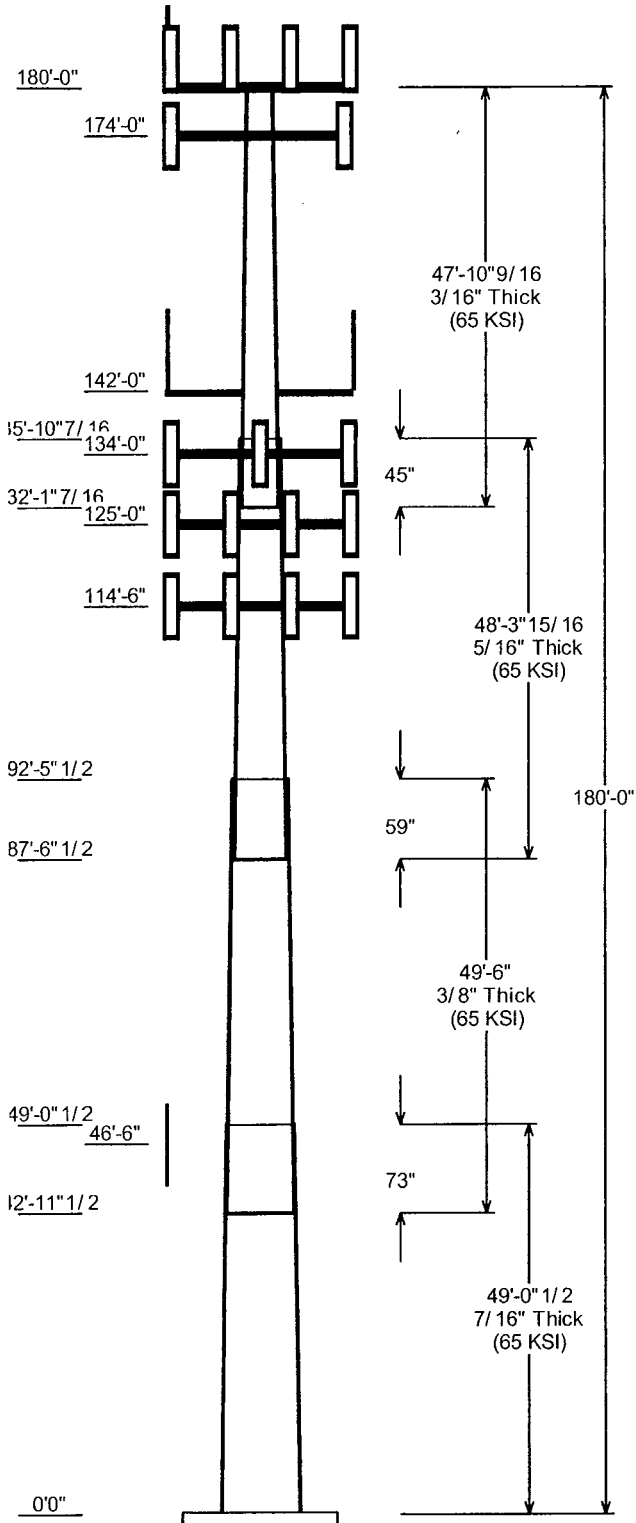
Linear Appurtenance			
Elev (ft)		Description	Exposed To Wind
From	To		
0.000	46.500	1/2" Coax	No
0.000	114.5	1 1/4" Coax	Yes
0.000	125.0	1 5/8" Coax	Yes
0.000	134.0	1 5/8" Coax	No
0.000	142.0	1 5/8" Coax	No
0.000	142.0	1/2" Coax	No
0.000	174.0	1 5/8" Coax	No
0.000	180.0	1 5/8" Coax	No
0.000	180.0	1 5/8" Coax	No
0.000	180.0	7/8" Coax	No

Load Cases	
1.2D + 1.6W	90.00 mph with No Ice
0.9D + 1.6W	90.00 mph with No Ice (Reduced DL)
1.2D + 1.0Di + 1.0Wi	40.00 mph with 1.25 in Radial Ice
1.2D + 1.0E	Dead Load with Seismic
0.9D + 1.0E	Dead Load with Seismic (Reduced DL)
1.0D + 1.0W	60.00 mph Serviceability

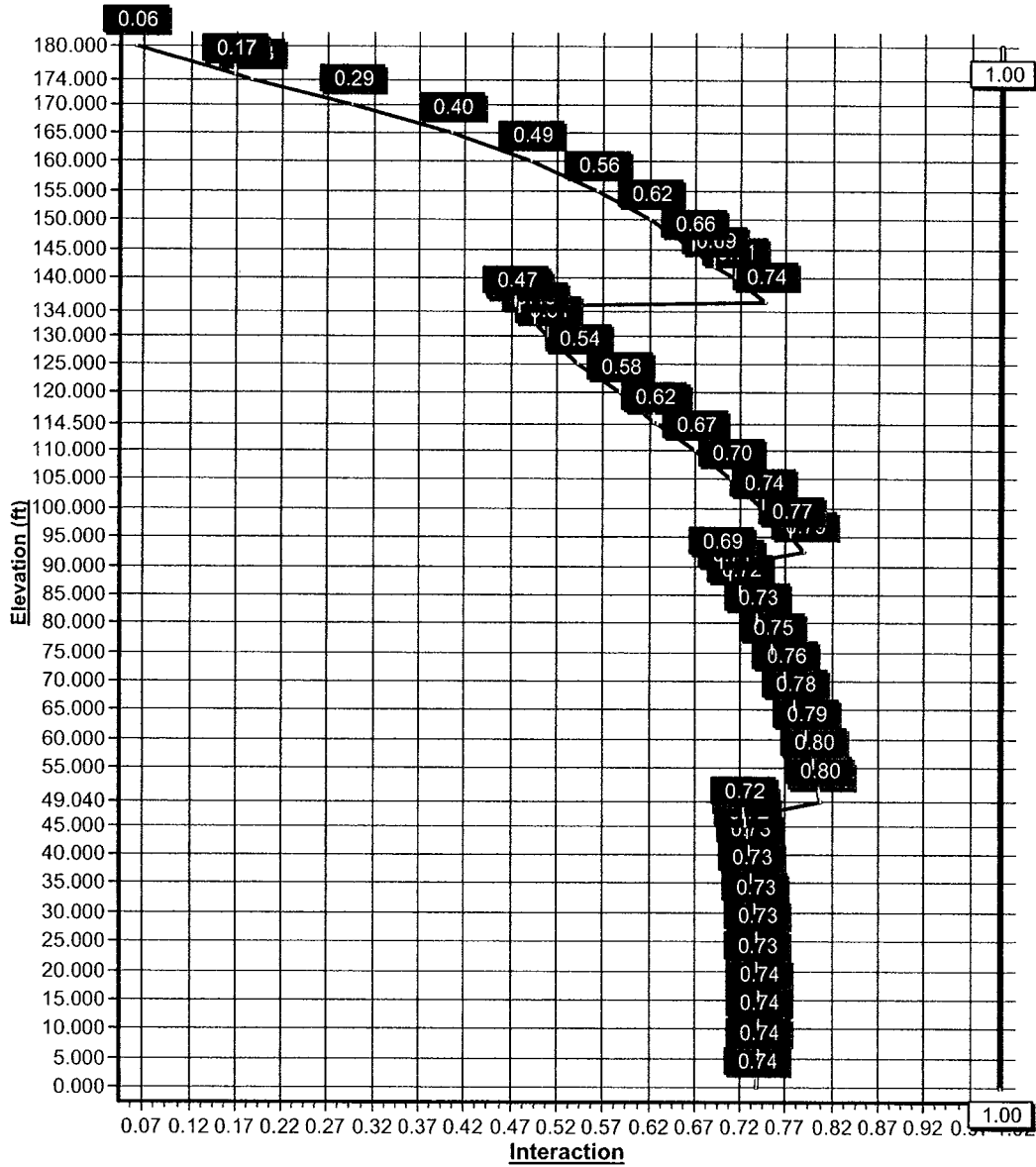


Reactions			
Load Case	Moment (Kip-ft)	Shear (Kips)	Axial (Kips)
1.2D + 1.6W	3305.75	26.94	50.80
0.9D + 1.6W	3188.12	25.82	38.09
1.2D + 1.0Di + 1.0Wi	793.11	5.80	105.88
1.2D + 1.0E	1626.31	14.34	50.83
0.9D + 1.0E	1601.16	14.33	38.12
1.0D + 1.0W	892.29	7.17	42.37

Dish Deflections			
Load Case	Attach Elev (ft)	Deflection (in)	Rotation (deg)
1.0D + 1.0W	0.00	0.000	0.000



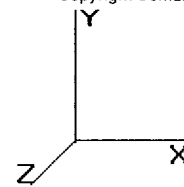
Load Case : 1.2D + 1.6W
Max Ratio 80.46% at 49.0ft



Pole : 302506
 Location : Winchester CT 3, CT
 Height : 180.0 (ft)
 Shape : 18 Sides
 Base Dia : 52.75 (in)
 Top Dia : 15.00 (in)
 Taper : 0.219444 (in/ft)

Code: ANSI/TIA-222 Rev G
 Struct Class : II
 Exposure Category : B
 Topographic Category : 1

Base Elev : 0.000 (ft)



Shaft Section Properties

Sect Num	Length (ft)	Thick (in)	Fv (ksi)	Joint Type	Slip Joint Len (in)	Weight (lb)	Bottom						Top				Taper (in/ft)		
							Dia (in)	Elev (ft)	Area (sqin)	Ix (in^4)	W/t Ratio	D/t Ratio	Dia (in)	Elev (ft)	Area (sqin)	Ix (in^4)		W/t Ratio	D/t Ratio
1	49.040	0.4375	65		0.00	10,875	52.75	0.000	72.64	25115.3	19.85	120.5	41.98	49.04	57.70	12585.4	15.51	95.97	0.21944
2	49.500	0.3750	65	Slip Joint	73.00	7,672	44.07	42.95	52.01	12548.0	19.31	117.5	33.21	92.45	39.08	5323.8	14.21	88.56	0.21944
3	48.330	0.3125	65	Slip Joint	59.00	4,779	34.91	87.54	34.32	5191.7	18.29	111.7	24.30	135.8	23.80	1731.6	12.31	77.79	0.21944
4	47.880	0.1875	65	Slip Joint	45.00	1,946	25.50	132.1	15.07	1220.4	22.58	136.0	15.00	180.0	8.81	244.4	12.70	80.00	0.21944
Shaft Weight						25,271													

Discrete Appurtenance Properties

Attach Elev (ft)	Description	Qty	Weight (lb)	No Ice CaAa (sf)	CaAa Factor	Weight (lb)	Ice CaAa (sf)	CaAa Factor	Distance From Face (ft)	Vert Ecc (ft)
180.0	Yagi	1	10.00	3.000	1.00	21.85	6.555	1.00	0.000	0.000
180.0	10' Omni	1	10.00	3.000	1.00	300.02	7.476	1.00	0.000	5.000
180.0	CSS DUO4-8670	12	66.50	6.530	0.82	392.15	7.669	0.83	0.000	4.000
180.0	Flat Platform	1	1500.00	26.100	1.00	2601.94	58.572	1.00	0.000	0.000
174.0	Flat Low Profile Platform	1	1500.00	26.100	1.00	2598.21	58.462	1.00	0.000	0.000
174.0	Antel LPD-7905/4	4	22.00	4.410	0.78	240.58	3.969	0.79	0.000	0.000
174.0	Nokia CS72993.07	4	17.60	1.429	0.67	98.11	2.098	0.67	0.000	0.000
174.0	Decibel 731DG85V1EXM	2	20.00	6.067	0.81	317.40	7.209	0.82	0.000	0.000
142.0	Side Arms	2	150.00	5.200	1.00	271.50	9.713	1.00	0.000	0.000
142.0	56" Dipole	1	25.00	1.760	1.00	53.93	3.796	1.00	0.000	0.000
142.0	10' Omni	2	10.00	3.000	1.00	289.64	7.387	1.00	0.000	5.000
134.0	Flat Platform w/ Handrails	1	2000.00	42.400	1.00	4346.85	77.032	1.00	0.000	0.000
134.0	Andrew DB980H90E-M	9	8.50	3.900	0.79	196.52	5.699	0.82	0.000	0.000
125.0	Round Low Profile Platform	1	1500.00	21.700	1.00	2562.48	53.184	1.00	0.000	0.000
125.0	Antel LPA-80063/6CF	2	27.00	10.340	0.94	541.03	11.857	0.94	0.000	0.000
125.0	Antel LPA-80080/6CF	4	21.00	9.100	0.74	380.76	10.867	0.75	0.000	0.000
125.0	Decibel DB950F85E-M	4	11.50	4.240	0.83	219.98	6.036	0.85	0.000	0.000
125.0	Decibel DB950F65E-M	2	16.00	4.430	0.83	318.71	8.019	0.84	0.000	0.000
114.5	Round Low Profile Platform	1	1500.00	21.700	1.00	2553.20	52.909	1.00	0.000	0.000
114.5	Decibel DB844H90E-XY	12	14.00	3.730	0.93	222.09	5.143	0.93	0.000	0.000
46.50	Nokia CS72187.01	1	10.00	1.000	1.00	52.66	2.083	1.00	0.000	0.000
Totals		68	9831.90			13012.96			Number of Loadings : 21	

Linear Appurtenance Properties

Elev From (ft)	Elev To (ft)	Description	Exposed Width (in)	Exposed To Wind
0.00	180.00	(12) 1 5/8" Coax	0.00	N
0.00	180.00	(1) 1 5/8" Coax	0.00	N
0.00	180.00	(1) 7/8" Coax	0.00	N
0.00	174.00	(12) 1 5/8" Coax	0.00	N
0.00	142.00	(4) 1 5/8" Coax	0.00	N
0.00	142.00	(1) 1/2" Coax	0.00	N
0.00	134.00	(9) 1 5/8" Coax	0.00	N
0.00	125.00	(12) 1 5/8" Coax	3.96	Y
0.00	114.50	(12) 1 1/4" Coax	3.10	Y
0.00	46.50	(1) 1/2" Coax	0.00	N

Pole : 302506
Location : Winchester CT 3, CT
Height : 180.0 (ft)
Shape : 18 Sides
Base Dia : 52.75 (in)
Top Dia : 15.00 (in)
Taper : 0.219444 (in/ft)

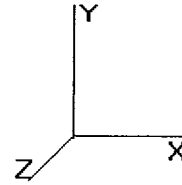
Code: ANSI/TIA-222 Rev G
Struct Class : II
Exposure Category : B
Topographic Category : 1

Base Elev : 0.000 (ft)

Copyright Semaan Engineering Solutions, Inc

8/26/2008 4:34:25 PM

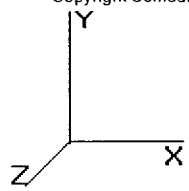
Page: 2



Pole : 302506
 Location : Winchester CT 3, CT
 Height : 180.0 (ft)
 Shape : 18 Sides
 Base Dia : 52.75 (in)
 Top Dia : 15.00 (in)
 Taper : 0.219444 (in/ft)

Code: ANSI/TIA-222 Rev G
 Struct Class : II
 Exposure Category : B
 Topographic Category : 1
 Base Elev : 0.000 (ft)

Copyright Semaan Engineering Solutions, Inc
 8/26/2008 4:34:25 PM
 Page: 3



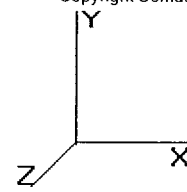
Segment Properties (Max Len : 5 ft)

Seg Top Elev (ft)	Description	Thick (in)	Flat Dia (in)	Area (in^2)	Ix (in^4)	W/t Ratio	D/t Ratio	Fy (ksi)	S (in3)	Weight (lb)
0.00		0.4375	52.750	72.640	25,115.3	19.85	120.57	65.0	937.8	0.0
5.00		0.4375	51.653	71.116	23,567.9	19.41	118.06	65.0	898.7	1,222.9
10.00		0.4375	50.556	69.593	22,085.4	18.96	115.56	65.0	860.4	1,197.0
15.00		0.4375	49.458	68.069	20,666.4	18.52	113.05	65.0	823.0	1,171.1
20.00		0.4375	48.361	66.546	19,309.5	18.08	110.54	65.0	786.4	1,145.2
25.00		0.4375	47.264	65.022	18,013.3	17.64	108.03	65.0	750.7	1,119.2
30.00		0.4375	46.167	63.498	16,776.5	17.20	105.52	65.0	715.7	1,093.3
35.00		0.4375	45.069	61.975	15,597.7	16.75	103.02	65.0	681.6	1,067.4
40.00		0.4375	43.972	60.451	14,475.4	16.31	100.51	65.0	648.4	1,041.5
42.96	Bot - Section 2	0.4375	43.323	59.550	13,837.8	16.05	99.02	65.0	629.1	603.6
45.00		0.4375	42.875	58.928	13,408.2	15.87	98.00	65.0	616.0	771.7
46.50		0.4375	42.546	58.471	13,098.7	15.74	97.25	65.0	606.4	561.4
49.04	Top - Section 1	0.3750	42.738	50.421	11,432.7	18.69	113.97	65.0	526.9	940.6
50.00		0.3750	42.528	50.171	11,263.0	18.59	113.41	65.0	521.6	164.3
55.00		0.3750	41.431	48.865	10,406.2	18.07	110.48	65.0	494.7	842.5
60.00		0.3750	40.333	47.559	9,594.0	17.55	107.56	65.0	468.5	820.3
65.00		0.3750	39.236	46.253	8,825.1	17.04	104.63	65.0	443.0	798.0
70.00		0.3750	38.139	44.947	8,098.5	16.52	101.70	65.0	418.2	775.8
75.00		0.3750	37.042	43.641	7,412.9	16.01	98.78	65.0	394.2	753.6
80.00		0.3750	35.944	42.335	6,767.2	15.49	95.85	65.0	370.8	731.4
85.00		0.3750	34.847	41.029	6,160.0	14.97	92.93	65.0	348.2	709.2
87.54	Bot - Section 3	0.3750	34.290	40.366	5,866.0	14.71	91.44	65.0	336.9	351.7
90.00		0.3750	33.750	39.723	5,590.4	14.46	90.00	65.0	326.2	620.3
92.46	Top - Section 2	0.3125	33.836	33.250	4,721.1	17.68	108.27	65.0	274.8	609.5
95.00		0.3125	33.278	32.696	4,489.2	17.37	106.49	65.0	265.7	285.4
100.00		0.3125	32.181	31.608	4,055.7	16.75	102.98	65.0	248.2	547.0
105.00		0.3125	31.083	30.520	3,651.0	16.13	99.47	65.0	231.3	528.5
110.00		0.3125	29.986	29.431	3,274.2	15.51	95.96	65.0	215.1	510.0
114.50		0.3125	28.999	28.452	2,958.1	14.95	92.80	65.0	200.9	443.2
115.00		0.3125	28.889	28.343	2,924.3	14.89	92.44	65.0	199.4	48.3
120.00		0.3125	27.792	27.255	2,600.2	14.27	88.93	65.0	184.3	473.0
125.00		0.3125	26.694	26.167	2,301.0	13.65	85.42	65.0	169.8	454.5
130.00		0.3125	25.597	25.078	2,025.7	13.03	81.91	65.0	155.9	435.9
132.10	Bot - Section 4	0.3125	25.132	24.617	1,915.9	12.77	80.42	65.0	150.2	179.2
134.00		0.3125	24.719	24.208	1,821.9	12.54	79.10	65.0	145.2	251.8
135.00		0.3125	24.500	23.990	1,773.2	12.41	78.40	65.0	142.6	132.2
135.80	Top - Section 3	0.1875	24.684	14.578	1,105.3	21.80	131.65	65.0	88.2	114.0
140.00		0.1875	23.778	14.039	987.1	20.95	126.81	65.0	81.8	201.1
142.00		0.1875	23.339	13.777	933.0	20.54	124.47	65.0	78.7	94.7
145.00		0.1875	22.681	13.386	855.6	19.92	120.96	65.0	74.3	138.6
150.00		0.1875	21.583	12.733	736.4	18.89	115.11	65.0	67.2	222.2
155.00		0.1875	20.486	12.080	628.8	17.85	109.26	65.0	60.5	211.1
160.00		0.1875	19.389	11.427	532.3	16.82	103.41	65.0	54.1	200.0
165.00		0.1875	18.292	10.774	446.2	15.79	97.56	65.0	48.0	188.9
170.00		0.1875	17.194	10.121	369.8	14.76	91.70	65.0	42.4	177.8
174.00		0.1875	16.317	9.599	315.5	13.93	87.02	65.0	38.1	134.2
175.00		0.1875	16.097	9.468	302.8	13.73	85.85	65.0	37.0	32.4
180.00		0.1875	15.000	8.815	244.4	12.70	80.00	65.0	32.1	155.5
										25,271.1

Pole : 302506
 Location : Winchester CT 3, CT
 Height : 180.0 (ft)
 Shape : 18 Sides
 Base Dia : 52.75 (in)
 Top Dia : 15.00 (in)
 Taper : 0.219444 (in/ft)

Code: ANSI/TIA-222 Rev G
 Struct Class : II
 Exposure Category : B
 Topographic Category : 1
 Base Elev : 0.000 (ft)

Copyright Semaan Engineering Solutions, Inc
 8/26/2008 4:34:25 PM
 Page : 4



Load Case: 1.2D + 1.6W	90.00 mph with No Ice	29 Iterations
Gust Response Factor : 1.10		Wind Importance Factor : 1.00
Dead Load Factor : 1.20		
Wind Load Factor : 1.60		

Shaft Segment Forces (Factored)

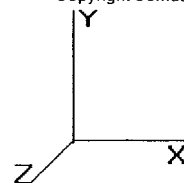
Seg Top Elev (ft)	Description	Kzt	Kz	qz (psf)	qzGh (psf)	C (mph-ft)	Cf	Ice Thick (in)	Tributary (ft)	Aa (sf)	CfAa (sf)	Wind Force X (lb)	Dead Load Ice (lb)	Tot Dead Load (lb)	
0.00		1.00	0.70	13.789	15.16	336.11	0.650	0.00	0.00	0.000	0.00	0.0	0.0	0.0	
5.00		1.00	0.70	13.789	15.16	329.11	0.715	*	0.00	5.00	22.086	15.79	383.1	0.0	1,467.5
10.00		1.00	0.70	13.789	15.16	322.12	0.720	*	0.00	5.00	21.622	15.57	378.0	0.0	1,436.4
15.00		1.00	0.70	13.789	15.16	315.13	0.726	*	0.00	5.00	21.158	15.36	372.9	0.0	1,405.3
20.00		1.00	0.70	13.789	15.16	308.14	0.732	*	0.00	5.00	20.693	15.15	367.7	0.0	1,374.2
25.00		1.00	0.70	13.789	15.16	301.15	0.739	*	0.00	5.00	20.229	14.94	362.6	0.0	1,343.1
30.00		1.00	0.70	13.801	15.18	294.28	0.745	*	0.00	5.00	19.765	14.73	357.8	0.0	1,312.0
35.00		1.00	0.73	14.423	15.86	293.68	0.752	*	0.00	5.00	19.301	14.52	368.5	0.0	1,280.9
40.00		1.00	0.76	14.983	16.48	292.05	0.760	*	0.00	5.00	18.837	14.31	377.3	0.0	1,249.8
42.96	Bot - Section 2	1.00	0.77	15.292	16.82	290.69	0.766	*	0.00	2.96	10.920	8.36	225.0	0.0	724.4
45.00		1.00	0.78	15.496	17.04	289.60	0.770	*	0.00	2.04	7.582	5.83	159.1	0.0	926.0
46.50	Appertunance(s)	1.00	0.79	15.642	17.20	288.72	0.772	*	0.00	1.50	5.516	4.26	117.3	0.0	673.6
49.04	Top - Section 1	1.00	0.80	15.882	17.47	287.11	0.776	*	0.00	2.54	9.245	7.17	200.5	0.0	1,128.8
50.00		1.00	0.81	15.970	17.56	291.61	0.773	*	0.00	0.96	3.464	2.68	75.3	0.0	197.2
55.00		1.00	0.83	16.411	18.05	287.98	0.778	*	0.00	5.00	17.761	13.82	399.1	0.0	1,011.0
60.00		1.00	0.85	16.824	18.50	283.86	0.787	*	0.00	5.00	17.297	13.61	402.9	0.0	984.3
65.00		1.00	0.87	17.213	18.93	279.31	0.796	*	0.00	5.00	16.833	13.40	405.8	0.0	957.7
70.00		1.00	0.89	17.581	19.33	274.39	0.805	*	0.00	5.00	16.368	13.18	407.9	0.0	931.0
75.00		1.00	0.91	17.931	19.72	269.14	0.816	*	0.00	5.00	15.904	12.97	409.4	0.0	904.3
80.00		1.00	0.92	18.265	20.09	263.58	0.827	*	0.00	5.00	15.440	12.76	410.2	0.0	877.7
85.00		1.00	0.94	18.584	20.44	257.76	0.838	*	0.00	5.00	14.976	12.55	410.5	0.0	851.0
87.54	Bot - Section 3	1.00	0.95	18.741	20.61	254.71	1.200	*	0.00	2.54	7.430	8.92	294.1	0.0	422.1
90.00		1.00	0.95	18.890	20.77	251.69	1.200	*	0.00	2.46	7.212	8.65	287.7	0.0	744.3
92.46	Top - Section 2	1.00	0.96	19.036	20.94	248.63	1.200	*	0.00	2.46	7.090	8.51	285.0	0.0	731.5
95.00		1.00	0.97	19.184	21.10	250.09	1.200	*	0.00	2.54	7.222	8.67	292.6	0.0	342.4
100.0		1.00	0.98	19.467	21.41	243.63	1.200	*	0.00	5.00	13.848	16.62	569.3	0.0	656.4
105.0		1.00	1.00	19.741	21.71	236.97	1.200	*	0.00	5.00	13.383	16.06	558.0	0.0	634.2
110.0		1.00	1.01	20.005	22.00	230.13	1.200	*	0.00	5.00	12.919	15.50	545.8	0.0	612.0
114.5	Appertunance(s)	1.00	1.02	20.235	22.25	223.82	1.200	*	0.00	4.50	11.230	13.48	479.9	0.0	531.8
115.0		1.00	1.02	20.260	22.28	223.12	0.718	*	0.00	0.50	1.225	0.88	31.3	0.0	58.0
120.0		1.00	1.04	20.508	22.55	215.95	0.723	*	0.00	5.00	11.991	8.67	313.1	0.0	567.6
125.0	Appertunance(s)	1.00	1.05	20.749	22.82	208.64	0.734	*	0.00	5.00	11.526	8.46	309.0	0.0	545.3
130.0		1.00	1.06	20.983	23.08	201.19	0.650		0.00	5.00	11.062	7.19	265.5	0.0	523.1
132.1	Bot - Section 4	1.00	1.07	21.080	23.18	197.99	0.650		0.00	2.12	4.550	2.96	109.7	0.0	215.1
134.0	Appertunance(s)	1.00	1.07	21.165	23.28	195.13	0.650		0.00	1.88	4.025	2.62	97.5	0.0	302.2
135.0		1.00	1.07	21.210	23.33	193.60	0.650		0.00	1.00	2.114	1.37	51.3	0.0	158.7
135.8	Top - Section 3	1.00	1.07	21.249	23.37	192.27	0.650		0.00	0.87	1.824	1.19	44.3	0.0	136.8
140.0		1.00	1.08	21.432	23.57	188.88	0.650		0.00	4.13	8.469	5.50	207.6	0.0	241.3
142.0	Appertunance(s)	1.00	1.09	21.519	23.67	185.77	0.650		0.00	2.00	3.987	2.59	98.1	0.0	113.6
145.0		1.00	1.09	21.648	23.81	181.07	0.650		0.00	3.00	5.841	3.80	144.7	0.0	166.4
150.0		1.00	1.11	21.858	24.04	173.14	0.650		0.00	5.00	9.364	6.09	234.2	0.0	266.6
155.0		1.00	1.12	22.064	24.27	165.11	0.650		0.00	5.00	8.900	5.78	224.6	0.0	253.3
160.0		1.00	1.13	22.265	24.49	156.98	0.650		0.00	5.00	8.435	5.48	214.9	0.0	240.0
165.0		1.00	1.14	22.462	24.70	148.75	0.650		0.00	5.00	7.971	5.18	204.8	0.0	226.6
170.0		1.00	1.15	22.654	24.92	140.42	0.650		0.00	5.00	7.507	4.88	194.6	0.0	213.3
174.0	Appertunance(s)	1.00	1.15	22.805	25.08	133.70	0.650		0.00	4.00	5.671	3.69	148.0	0.0	161.0
175.0		1.00	1.16	22.843	25.12	132.01	0.650		0.00	1.00	1.371	0.89	35.8	0.0	38.9
180.0	Appertunance(s)	1.00	1.16	23.027	25.33	123.50	0.650		0.00	5.00	6.579	4.28	173.3	0.0	186.6
								Totals:	180.00			13,005.8	0.0	30,325.3	

* = Cf Adjusted By Linear Load Ra Effect

Pole : 302506
 Location : Winchester CT 3, CT
 Height : 180.0 (ft)
 Shape : 18 Sides
 Base Dia : 52.75 (in)
 Top Dia : 15.00 (in)
 Taper : 0.219444 (in/ft)

Code: ANSI/TIA-222 Rev G
 Struct Class : II
 Exposure Category : B
 Topographic Category : 1

Base Elev : 0.000 (ft)



Load Case: 1.2D + 1.6W

90.00 mph with No Ice

29 Iterations

Gust Response Factor : 1.10

Wind Importance Factor : 1.00

Dead Load Factor : 1.20

Wind Load Factor : 1.60

Discrete Appurtenance Segment Forces (Factored)

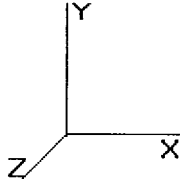
Elev (ft)	Description	Qty	qz (psf)	qzGh (psf)	CaAa Factor	Ka	Total CaAa (sf)	Horiz Ecc (ft)	Vert Ecc (ft)	Wind FX (lb)	Mom Y (lb-ft)	Mom Z (lb-ft)	Dead Load (lb)
46.50	Nokia CS72187.01	1	15.642	17.206	1.00	1.00	1.00	0.000	0.000	27.53	0.00	0.00	12.00
114.5	Round Low Profile Pl	1	20.235	22.259	1.00	1.00	21.70	0.000	0.000	772.82	0.00	0.00	1,800.00
114.5	Decibel DB844H90E-	12	20.235	22.259	0.74	0.80	33.30	0.000	0.000	1,186.00	0.00	0.00	201.60
125.0	Round Low Profile Pl	1	20.749	22.824	1.00	1.00	21.70	0.000	0.000	792.44	0.00	0.00	1,800.00
125.0	Antel LPA-80063/6CF	2	20.749	22.824	0.75	0.80	15.55	0.000	0.000	567.91	0.00	0.00	64.80
125.0	Antel LPA-80080/6CF	4	20.749	22.824	0.59	0.80	21.55	0.000	0.000	786.92	0.00	0.00	100.80
125.0	Decibel DB950F85E-M	4	20.749	22.824	0.66	0.80	11.26	0.000	0.000	411.25	0.00	0.00	55.20
125.0	Decibel DB950F65E-M	2	20.749	22.824	0.66	0.80	5.88	0.000	0.000	214.84	0.00	0.00	38.40
134.0	Flat Platform w/ Han	1	21.165	23.282	1.00	1.00	42.40	0.000	0.000	1,579.43	0.00	0.00	2,400.00
134.0	Andrew DB980H90E-M	9	21.165	23.282	0.59	0.75	20.80	0.000	0.000	774.70	0.00	0.00	91.80
142.0	Side Arms	2	21.519	23.671	1.00	1.00	10.40	0.000	0.000	393.88	0.00	0.00	360.00
142.0	56" Dipole	1	21.519	23.671	1.00	1.00	1.76	0.000	0.000	66.66	0.00	0.00	30.00
142.0	10' Omni	2	21.733	23.906	1.00	1.00	6.00	0.000	5.000	229.50	0.00	1,147.48	24.00
174.0	Flat Low Profile Pla	1	22.805	25.086	1.00	1.00	26.10	0.000	0.000	1,047.58	0.00	0.00	1,800.00
174.0	Antel LPD-7905/4	4	22.805	25.086	0.62	0.80	11.01	0.000	0.000	441.81	0.00	0.00	105.60
174.0	Nokia CS72993.07	4	22.805	25.086	0.54	0.80	3.06	0.000	0.000	122.97	0.00	0.00	84.48
174.0	Decibel	2	22.805	25.086	0.65	0.80	7.86	0.000	0.000	315.59	0.00	0.00	48.00
180.0	Yagi	1	23.027	25.330	1.00	1.00	3.00	0.000	0.000	121.58	0.00	0.00	12.00
180.0	10' Omni	1	23.208	25.529	1.00	1.00	3.00	0.000	5.000	122.54	0.00	612.70	12.00
180.0	CSS DUO4-8670	12	23.172	25.490	0.66	0.80	51.40	0.000	4.000	2,096.43	0.00	8,385.72	957.60
180.0	Flat Low Profile Pla	1	23.027	25.330	1.00	1.00	26.10	0.000	0.000	1,057.78	0.00	0.00	1,800.00
										13,130.15			11,798.28

Pole : 302506
 Location : Winchester CT 3, CT
 Height : 180.0 (ft)
 Shape : 18 Sides
 Base Dia : 52.75 (in)
 Top Dia : 15.00 (in)
 Taper : 0.219444 (in/ft)

Code: ANSI/TIA-222 Rev G
 Struct Class : II
 Exposure Category : B
 Topographic Category : 1

Base Elev : 0.000 (ft)

Copyright Semaan Engineering Solutions, Inc
 8/26/2008 4:34:26 PM
 Page : 6



Load Case: 1.2D + 1.6W 90.00 mph with No Ice 29 Iterations

Gust Response Factor : 1.10 Wind Importance Factor : 1.00

Dead Load Factor : 1.20

Wind Load Factor : 1.60

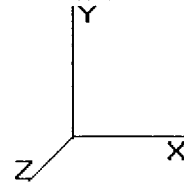
Linear Appurtenance Segment Forces (Factored)

Seg Top Elev (ft)	Description	Exposed To Wind	Length (ft)	Ca	Exposed Width (in)	Area (sqft)	CaAa (sqft)	qz (psf)	Ra	Cf Adjust Factor	FX (lb)	Dead Load (lb)
5.00	(12) 1 5/8" Coax	Yes	5.00	0.000	3.96	1.65	0.00	13.789	0.133	1.100	0.00	59.03
5.00	(12) 1 1/4" Coax	Yes	5.00	0.000	3.10	1.29	0.00	13.789	0.133	1.100	0.00	45.35
10.00	(12) 1 5/8" Coax	Yes	5.00	0.000	3.96	1.65	0.00	13.789	0.136	1.108	0.00	59.03
10.00	(12) 1 1/4" Coax	Yes	5.00	0.000	3.10	1.29	0.00	13.789	0.136	1.108	0.00	45.35
15.00	(12) 1 5/8" Coax	Yes	5.00	0.000	3.96	1.65	0.00	13.789	0.139	1.117	0.00	59.03
15.00	(12) 1 1/4" Coax	Yes	5.00	0.000	3.10	1.29	0.00	13.789	0.139	1.117	0.00	45.35
20.00	(12) 1 5/8" Coax	Yes	5.00	0.000	3.96	1.65	0.00	13.789	0.142	1.126	0.00	59.03
20.00	(12) 1 1/4" Coax	Yes	5.00	0.000	3.10	1.29	0.00	13.789	0.142	1.126	0.00	45.35
25.00	(12) 1 5/8" Coax	Yes	5.00	0.000	3.96	1.65	0.00	13.789	0.145	1.136	0.00	59.03
25.00	(12) 1 1/4" Coax	Yes	5.00	0.000	3.10	1.29	0.00	13.789	0.145	1.136	0.00	45.35
30.00	(12) 1 5/8" Coax	Yes	5.00	0.000	3.96	1.65	0.00	13.801	0.149	1.146	0.00	59.03
30.00	(12) 1 1/4" Coax	Yes	5.00	0.000	3.10	1.29	0.00	13.801	0.149	1.146	0.00	45.35
35.00	(12) 1 5/8" Coax	Yes	5.00	0.000	3.96	1.65	0.00	14.423	0.152	1.157	0.00	59.03
35.00	(12) 1 1/4" Coax	Yes	5.00	0.000	3.10	1.29	0.00	14.423	0.152	1.157	0.00	45.35
40.00	(12) 1 5/8" Coax	Yes	5.00	0.000	3.96	1.65	0.00	14.983	0.156	1.169	0.00	59.03
40.00	(12) 1 1/4" Coax	Yes	5.00	0.000	3.10	1.29	0.00	14.983	0.156	1.169	0.00	45.35
42.96	(12) 1 5/8" Coax	Yes	2.96	0.000	3.96	0.98	0.00	15.292	0.159	1.178	0.00	34.91
42.96	(12) 1 1/4" Coax	Yes	2.96	0.000	3.10	0.76	0.00	15.292	0.159	1.178	0.00	26.82
45.00	(12) 1 5/8" Coax	Yes	2.04	0.000	3.96	0.67	0.00	15.496	0.161	1.184	0.00	24.13
45.00	(12) 1 1/4" Coax	Yes	2.04	0.000	3.10	0.53	0.00	15.496	0.161	1.184	0.00	18.54
46.50	(12) 1 5/8" Coax	Yes	1.50	0.000	3.96	0.50	0.00	15.642	0.163	1.188	0.00	17.71
46.50	(12) 1 1/4" Coax	Yes	1.50	0.000	3.10	0.39	0.00	15.642	0.163	1.188	0.00	13.61
49.04	(12) 1 5/8" Coax	Yes	2.54	0.000	3.96	0.84	0.00	15.882	0.164	1.193	0.00	29.99
49.04	(12) 1 1/4" Coax	Yes	2.54	0.000	3.10	0.66	0.00	15.882	0.164	1.193	0.00	23.04
50.00	(12) 1 5/8" Coax	Yes	0.96	0.000	3.96	0.32	0.00	15.970	0.163	1.189	0.00	11.34
50.00	(12) 1 1/4" Coax	Yes	0.96	0.000	3.10	0.25	0.00	15.970	0.163	1.189	0.00	8.71
55.00	(12) 1 5/8" Coax	Yes	5.00	0.000	3.96	1.65	0.00	16.411	0.166	1.197	0.00	59.03
55.00	(12) 1 1/4" Coax	Yes	5.00	0.000	3.10	1.29	0.00	16.411	0.166	1.197	0.00	45.35
60.00	(12) 1 5/8" Coax	Yes	5.00	0.000	3.96	1.65	0.00	16.824	0.170	1.210	0.00	59.03
60.00	(12) 1 1/4" Coax	Yes	5.00	0.000	3.10	1.29	0.00	16.824	0.170	1.210	0.00	45.35
65.00	(12) 1 5/8" Coax	Yes	5.00	0.000	3.96	1.65	0.00	17.213	0.175	1.224	0.00	59.03
65.00	(12) 1 1/4" Coax	Yes	5.00	0.000	3.10	1.29	0.00	17.213	0.175	1.224	0.00	45.35
70.00	(12) 1 5/8" Coax	Yes	5.00	0.000	3.96	1.65	0.00	17.581	0.180	1.239	0.00	59.03
70.00	(12) 1 1/4" Coax	Yes	5.00	0.000	3.10	1.29	0.00	17.581	0.180	1.239	0.00	45.35
75.00	(12) 1 5/8" Coax	Yes	5.00	0.000	3.96	1.65	0.00	17.931	0.185	1.255	0.00	59.03
75.00	(12) 1 1/4" Coax	Yes	5.00	0.000	3.10	1.29	0.00	17.931	0.185	1.255	0.00	45.35
80.00	(12) 1 5/8" Coax	Yes	5.00	0.000	3.96	1.65	0.00	18.265	0.191	1.272	0.00	59.03
80.00	(12) 1 1/4" Coax	Yes	5.00	0.000	3.10	1.29	0.00	18.265	0.191	1.272	0.00	45.35
85.00	(12) 1 5/8" Coax	Yes	5.00	0.000	3.96	1.65	0.00	18.584	0.196	1.289	0.00	59.03
85.00	(12) 1 1/4" Coax	Yes	5.00	0.000	3.10	1.29	0.00	18.584	0.196	1.289	0.00	45.35
87.54	(12) 1 5/8" Coax	Yes	2.54	1.200	3.96	0.84	1.01	18.741	0.201	0.000	33.18	29.99
87.54	(12) 1 1/4" Coax	Yes	2.54	1.200	3.10	0.66	0.79	18.741	0.201	0.000	25.97	23.04
90.00	(12) 1 5/8" Coax	Yes	2.46	1.200	3.96	0.81	0.97	18.890	0.204	0.000	32.39	29.05
90.00	(12) 1 1/4" Coax	Yes	2.46	1.200	3.10	0.64	0.76	18.890	0.204	0.000	25.35	22.31
92.46	(12) 1 5/8" Coax	Yes	2.46	1.200	3.96	0.81	0.97	19.036	0.208	0.000	32.59	29.00
92.46	(12) 1 1/4" Coax	Yes	2.46	1.200	3.10	0.63	0.76	19.036	0.208	0.000	25.51	22.28
95.00	(12) 1 5/8" Coax	Yes	2.54	1.200	3.96	0.84	1.01	19.184	0.207	0.000	34.01	30.03
95.00	(12) 1 1/4" Coax	Yes	2.54	1.200	3.10	0.66	0.79	19.184	0.207	0.000	26.62	23.07
100.0	(12) 1 5/8" Coax	Yes	5.00	1.200	3.96	1.65	1.98	19.467	0.212	0.000	67.84	59.03
100.0	(12) 1 1/4" Coax	Yes	5.00	1.200	3.10	1.29	1.55	19.467	0.212	0.000	53.11	45.35
105.0	(12) 1 5/8" Coax	Yes	5.00	1.200	3.96	1.65	1.98	19.741	0.220	0.000	68.79	59.03

Pole : 302506
 Location : Winchester CT 3, CT
 Height : 180.0 (ft)
 Shape : 18 Sides
 Base Dia : 52.75 (in)
 Top Dia : 15.00 (in)
 Taper : 0.219444 (in/ft)

Code: ANSI/TIA-222 Rev G
 Struct Class : II
 Exposure Category : B
 Topographic Category : 1

Base Elev : 0.000 (ft)



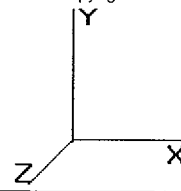
Load Case: 1.2D + 1.6W	90.00 mph with No Ice	29 Iterations
Gust Response Factor : 1.10		Wind Importance Factor : 1.00
Dead Load Factor : 1.20		
Wind Load Factor : 1.60		

105.0	(12) 1 1/4" Coax	Yes	5.00	1.200	3.10	1.29	1.55	19.741	0.220	0.000	53.85	45.35
110.0	(12) 1 5/8" Coax	Yes	5.00	1.200	3.96	1.65	1.98	20.005	0.228	0.000	69.71	59.03
110.0	(12) 1 1/4" Coax	Yes	5.00	1.200	3.10	1.29	1.55	20.005	0.228	0.000	54.57	45.35
114.5	(12) 1 5/8" Coax	Yes	4.50	1.200	3.96	1.49	1.78	20.235	0.236	0.000	63.46	53.13
114.5	(12) 1 1/4" Coax	Yes	4.50	1.200	3.10	1.16	1.39	20.235	0.236	0.000	49.68	40.82
115.0	(12) 1 5/8" Coax	Yes	0.50	0.000	3.96	0.17	0.00	20.260	0.135	1.104	0.00	5.90
120.0	(12) 1 5/8" Coax	Yes	5.00	0.000	3.96	1.65	0.00	20.508	0.138	1.113	0.00	59.03
125.0	(12) 1 5/8" Coax	Yes	5.00	0.000	3.96	1.65	0.00	20.749	0.143	1.129	0.00	59.03
Totals:											716.65	2,514.40

Pole : 302506
 Location : Winchester CT 3, CT
 Height : 180.0 (ft)
 Shape : 18 Sides
 Base Dia : 52.75 (in)
 Top Dia : 15.00 (in)
 Taper : 0.219444 (in/ft)

Code: ANSI/TIA-222 Rev G
 Struct Class : II
 Exposure Category : B
 Topographic Category : 1

Base Elev : 0.000 (ft)



Load Case: 1.2D + 1.6W	90.00 mph with No Ice	29 Iterations
Gust Response Factor : 1.10		Wind Importance Factor : 1.00
Dead Load Factor : 1.20		
Wind Load Factor : 1.60		

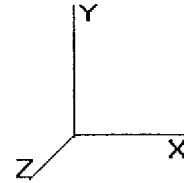
Applied Segment Forces Summary

Seg Elev (ft)	Lateral FX (-) (lb)	Axial FY (-) (lb)	Torsion MY (lb-ft)	Moment MZ (lb-ft)
0.00	0.00	0.00	0.00	0.00
5.00	383.10	1,762.61	0.00	0.00
10.00	377.98	1,731.51	0.00	0.00
15.00	372.85	1,700.40	0.00	0.00
20.00	367.72	1,669.29	0.00	0.00
25.00	362.60	1,638.19	0.00	0.00
30.00	357.77	1,607.08	0.00	0.00
35.00	368.52	1,575.98	0.00	0.00
40.00	377.28	1,544.87	0.00	0.00
42.96	225.01	898.87	0.00	0.00
45.00	159.14	1,046.64	0.00	0.00
46.50	144.84	774.16	0.00	0.00
49.04	200.48	1,278.22	0.00	0.00
50.00	75.25	253.67	0.00	0.00
55.00	399.09	1,305.19	0.00	0.00
60.00	402.88	1,278.52	0.00	0.00
65.00	405.80	1,251.86	0.00	0.00
70.00	407.95	1,225.20	0.00	0.00
75.00	409.40	1,198.54	0.00	0.00
80.00	410.23	1,171.87	0.00	0.00
85.00	410.49	1,145.21	0.00	0.00
87.54	353.22	571.53	0.00	0.00
90.00	345.47	889.08	0.00	0.00
92.46	343.13	876.00	0.00	0.00
95.00	353.25	492.10	0.00	0.00
100.0	690.29	950.64	0.00	0.00
105.0	680.62	928.42	0.00	0.00
110.0	670.12	906.20	0.00	0.00
114.5	2,551.91	2,798.19	0.00	0.00
115.0	31.34	82.86	0.00	0.00
120.0	313.06	816.41	0.00	0.00
125.0	3,082.37	2,853.39	0.00	0.00
130.0	265.54	712.94	0.00	0.00
132.1	109.72	295.55	0.00	0.00
134.0	2,451.59	2,865.35	0.00	0.00
135.0	51.30	187.77	0.00	0.00
135.8	44.34	162.17	0.00	0.00
140.0	207.63	361.53	0.00	0.00
142.0	788.18	585.80	0.00	1,147.48
145.0	144.66	241.35	0.00	0.00
150.0	234.15	391.59	0.00	0.00
155.0	224.64	378.26	0.00	0.00
160.0	214.86	364.93	0.00	0.00
165.0	204.83	351.60	0.00	0.00
170.0	194.55	338.27	0.00	0.00
174.0	2,075.92	2,299.09	0.00	0.00
175.0	35.84	52.11	0.00	0.00
180.0	3,571.63	3,034.17	0.00	8,998.42
Totals:	26,852.57	50,845.22	0.00	10,145.90

Pole : 302506
 Location : Winchester CT 3, CT
 Height : 180.0 (ft)
 Shape : 18 Sides
 Base Dia : 52.75 (in)
 Top Dia : 15.00 (in)
 Taper : 0.219444 (in/ft)

Code: ANSI/TIA-222 Rev G
 Struct Class : II
 Exposure Category : B
 Topographic Category : 1

Base Elev : 0.000 (ft)



Load Case: 1.2D + 1.6W

90.00 mph with No Ice

29 Iterations

Gust Response Factor : 1.10

Wind Importance Factor : 1.00

Dead Load Factor : 1.20

Wind Load Factor : 1.60

Calculated Forces

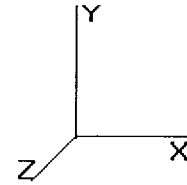
Seg Elev (ft)	Pu FY (-) (kips)	Vu FX (-) (kips)	Tu MY (ft-kips)	Mu MZ (ft-kips)	Mu MX (ft-kips)	Resultant Moment (ft-kips)	phi Pn (kips)	phi Vn (kips)	phi Tn (ft-kips)	phi Mn (ft-kips)	Total Deflect (in)	Rotation (deg)	Ratio
0.00	-50.80	-26.94	0.00	-3,305.75	0.00	3,305.75	4,249.43	2,124.71	9,129.72	4,571.64	0.00	0.00	0.735
5.00	-48.95	-26.71	0.00	-3,171.07	0.00	3,171.07	4,160.30	2,080.15	8,749.20	4,381.10	0.10	-0.18	0.736
10.00	-47.14	-26.48	0.00	-3,037.54	0.00	3,037.54	4,071.17	2,035.59	8,376.78	4,194.62	0.39	-0.37	0.736
15.00	-45.35	-26.24	0.00	-2,905.15	0.00	2,905.15	3,982.04	1,991.02	8,012.46	4,012.19	0.88	-0.56	0.736
20.00	-43.60	-26.01	0.00	-2,773.94	0.00	2,773.94	3,892.91	1,946.46	7,656.24	3,833.81	1.57	-0.76	0.735
25.00	-41.87	-25.77	0.00	-2,643.90	0.00	2,643.90	3,803.78	1,901.89	7,308.13	3,659.49	2.48	-0.96	0.734
30.00	-40.18	-25.52	0.00	-2,515.07	0.00	2,515.07	3,714.66	1,857.33	6,968.11	3,489.23	3.59	-1.16	0.732
35.00	-38.52	-25.26	0.00	-2,387.45	0.00	2,387.45	3,625.53	1,812.76	6,636.19	3,323.03	4.91	-1.37	0.729
40.00	-36.91	-24.96	0.00	-2,261.13	0.00	2,261.13	3,536.40	1,768.20	6,312.37	3,160.88	6.46	-1.58	0.726
42.96	-35.97	-24.77	0.00	-2,187.35	0.00	2,187.35	3,483.69	1,741.85	6,124.70	3,066.90	7.48	-1.71	0.724
45.00	-34.90	-24.63	0.00	-2,136.73	0.00	2,136.73	3,447.27	1,723.63	5,996.65	3,002.78	8.23	-1.80	0.722
46.50	-34.09	-24.52	0.00	-2,099.79	0.00	2,099.79	3,420.53	1,710.26	5,903.51	2,956.14	8.81	-1.87	0.720
49.04	-32.79	-24.32	0.00	-2,037.52	0.00	2,037.52	2,949.65	1,474.82	5,129.47	2,568.55	9.83	-1.98	0.805
50.00	-32.47	-24.32	0.00	-2,014.17	0.00	2,014.17	2,934.98	1,467.49	5,078.35	2,542.95	10.24	-2.03	0.803
55.00	-31.08	-24.00	0.00	-1,892.59	0.00	1,892.59	2,858.58	1,429.29	4,816.28	2,411.72	12.49	-2.27	0.796
60.00	-29.72	-23.68	0.00	-1,772.58	0.00	1,772.58	2,782.18	1,391.09	4,561.15	2,283.97	15.01	-2.52	0.787
65.00	-28.38	-23.34	0.00	-1,654.19	0.00	1,654.19	2,705.79	1,352.89	4,312.97	2,159.69	17.78	-2.78	0.777
70.00	-27.07	-23.00	0.00	-1,537.48	0.00	1,537.48	2,629.39	1,314.70	4,071.73	2,038.89	20.83	-3.03	0.765
75.00	-25.80	-22.64	0.00	-1,422.50	0.00	1,422.50	2,552.99	1,276.50	3,837.43	1,921.57	24.15	-3.29	0.751
80.00	-24.55	-22.27	0.00	-1,309.31	0.00	1,309.31	2,476.60	1,238.30	3,610.07	1,807.72	27.73	-3.56	0.735
85.00	-23.36	-21.87	0.00	-1,197.96	0.00	1,197.96	2,400.20	1,200.10	3,389.66	1,697.35	31.60	-3.82	0.716
87.54	-22.76	-21.53	0.00	-1,142.42	0.00	1,142.42	2,361.39	1,180.70	3,280.36	1,642.62	33.67	-3.96	0.705
90.00	-21.85	-21.18	0.00	-1,089.45	0.00	1,089.45	2,323.81	1,161.90	3,176.19	1,590.46	35.74	-4.09	0.695
92.46	-20.95	-20.82	0.00	-1,037.43	0.00	1,037.43	1,945.12	972.56	2,675.48	1,339.73	37.88	-4.22	0.786
95.00	-20.41	-20.51	0.00	-984.48	0.00	984.48	1,912.73	956.37	2,586.73	1,295.29	40.16	-4.36	0.771
100.00	-19.41	-19.85	0.00	-881.94	0.00	881.94	1,849.07	924.53	2,416.62	1,210.11	44.89	-4.66	0.740
105.00	-18.45	-19.18	0.00	-782.71	0.00	782.71	1,785.40	892.70	2,252.30	1,127.82	49.92	-4.95	0.705
110.00	-17.52	-18.52	0.00	-686.80	0.00	686.80	1,721.74	860.87	2,093.76	1,048.44	55.25	-5.24	0.666
114.50	-14.93	-15.75	0.00	-603.47	0.00	603.47	1,664.44	832.22	1,956.02	979.46	60.30	-5.49	0.625
115.00	-14.81	-15.75	0.00	-595.60	0.00	595.60	1,658.08	829.04	1,941.01	971.95	60.87	-5.52	0.622
120.00	-13.96	-15.42	0.00	-516.85	0.00	516.85	1,594.41	797.21	1,794.04	898.35	66.79	-5.79	0.584
125.00	-11.38	-12.11	0.00	-439.73	0.00	439.73	1,530.75	765.37	1,652.86	827.66	72.98	-6.05	0.539
130.00	-10.67	-11.81	0.00	-379.15	0.00	379.15	1,467.09	733.54	1,517.46	759.86	79.44	-6.30	0.507
132.12	-10.37	-11.68	0.00	-354.12	0.00	354.12	1,440.09	720.05	1,461.80	731.99	82.26	-6.41	0.491
134.00	-7.78	-8.94	0.00	-332.15	0.00	332.15	1,416.15	708.08	1,413.31	707.70	84.79	-6.51	0.475
135.00	-7.59	-8.87	0.00	-323.22	0.00	323.22	1,403.42	701.71	1,387.85	694.96	86.16	-6.56	0.471
135.87	-7.42	-8.82	0.00	-315.50	0.00	315.50	852.81	426.41	858.59	429.94	87.36	-6.60	0.743
140.00	-7.06	-8.60	0.00	-279.06	0.00	279.06	821.26	410.63	796.00	398.59	93.14	-6.80	0.709
142.00	-6.54	-7.77	0.00	-260.72	0.00	260.72	805.98	402.99	766.55	383.84	96.02	-6.96	0.688
145.00	-6.28	-7.63	0.00	-237.42	0.00	237.42	783.06	391.53	723.40	362.24	100.46	-7.19	0.664
150.00	-5.88	-7.38	0.00	-199.29	0.00	199.29	744.87	372.43	654.27	327.62	108.16	-7.55	0.617
155.00	-5.49	-7.14	0.00	-162.39	0.00	162.39	706.67	353.33	588.61	294.74	116.23	-7.90	0.559
160.00	-5.12	-6.90	0.00	-126.70	0.00	126.70	668.47	334.23	526.42	263.60	124.66	-8.23	0.489
165.00	-4.77	-6.67	0.00	-92.18	0.00	92.18	630.27	315.14	467.70	234.20	133.41	-8.52	0.402
170.00	-4.45	-6.44	0.00	-58.82	0.00	58.82	592.07	296.04	412.46	206.53	142.43	-8.76	0.293
174.00	-2.49	-4.04	0.00	-33.05	0.00	33.05	561.51	280.76	370.76	185.65	149.81	-8.90	0.183
175.00	-2.44	-4.00	0.00	-29.01	0.00	29.01	553.87	276.94	360.68	180.61	151.67	-8.93	0.165
180.00	0.00	-3.57	0.00	-9.00	0.00	9.00	515.68	257.84	312.38	156.42	161.04	-9.02	0.058

Pole : 302506
 Location : Winchester CT 3, CT
 Height : 180.0 (ft)
 Shape : 18 Sides
 Base Dia : 52.75 (in)
 Top Dia : 15.00 (in)
 Taper : 0.219444 (in/ft)

Code: ANSI/TIA-222 Rev G
 Struct Class : II
 Exposure Category : B
 Topographic Category : 1

Base Elev : 0.000 (ft)

Copyright Semaan Engineering Solutions, Inc
 8/26/2008 4:34:27 PM
 Page : 10



Load Case: 0.9D + 1.6W	90.00 mph with No Ice (Reduced DL)	29 Iterations
Gust Response Factor : 1.10		Wind Importance Factor : 1.00
Dead Load Factor : 0.90		
Wind Load Factor : 1.60		

Shaft Segment Forces (Factored)

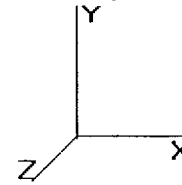
Seg Top Elev (ft)	Description	Kzt	Kz	qz (psf)	qzGh (psf)	C (mph-ft)	Cf	Ice Thick (in)	Tributary (ft)	Aa (sf)	CfAa (sf)	Wind Force X (lb)	Dead Load Ice (lb)	Tot Dead Load (lb)	
0.00		1.00	0.70	13.789	15.16	336.11	0.650	0.00	0.00	0.000	0.00	0.0	0.0	0.0	
5.00		1.00	0.70	13.789	15.16	329.11	0.650	*	0.00	5.00	22.086	14.36	348.4	0.0	1,100.6
10.00		1.00	0.70	13.789	15.16	322.12	0.650	*	0.00	5.00	21.622	14.05	341.1	0.0	1,077.3
15.00		1.00	0.70	13.789	15.16	315.13	0.650	*	0.00	5.00	21.158	13.75	333.8	0.0	1,054.0
20.00		1.00	0.70	13.789	15.16	308.14	0.650	*	0.00	5.00	20.693	13.45	326.4	0.0	1,030.6
25.00		1.00	0.70	13.789	15.16	301.15	0.650	*	0.00	5.00	20.229	13.15	319.1	0.0	1,007.3
30.00		1.00	0.70	13.801	15.18	294.28	0.650	*	0.00	5.00	19.765	12.85	312.1	0.0	984.0
35.00		1.00	0.73	14.423	15.86	293.68	0.650	*	0.00	5.00	19.301	12.55	318.4	0.0	960.7
40.00		1.00	0.76	14.983	16.48	292.05	0.650	*	0.00	5.00	18.837	12.24	322.9	0.0	937.3
42.96	Bot - Section 2	1.00	0.77	15.292	16.82	290.69	0.650	*	0.00	2.96	10.920	7.10	191.0	0.0	543.3
45.00		1.00	0.78	15.496	17.04	289.60	0.650	*	0.00	2.04	7.582	4.93	134.4	0.0	694.5
46.50	Appertunance(s)	1.00	0.79	15.642	17.20	288.72	0.650	*	0.00	1.50	5.516	3.59	98.7	0.0	505.2
49.04	Top - Section 1	1.00	0.80	15.882	17.47	287.11	0.650	*	0.00	2.54	9.245	6.01	168.0	0.0	846.6
50.00		1.00	0.81	15.970	17.56	291.61	0.650	*	0.00	0.96	3.464	2.25	63.3	0.0	147.9
55.00		1.00	0.83	16.411	18.05	287.98	0.650	*	0.00	5.00	17.761	11.54	333.4	0.0	758.2
60.00		1.00	0.85	16.824	18.50	283.86	0.650	*	0.00	5.00	17.297	11.24	332.9	0.0	738.2
65.00		1.00	0.87	17.213	18.93	279.31	0.650	*	0.00	5.00	16.833	10.94	331.5	0.0	718.2
70.00		1.00	0.89	17.581	19.33	274.39	0.650	*	0.00	5.00	16.368	10.64	329.2	0.0	698.2
75.00		1.00	0.91	17.931	19.72	269.14	0.650	*	0.00	5.00	15.904	10.34	326.2	0.0	678.3
80.00		1.00	0.92	18.265	20.09	263.58	0.650	*	0.00	5.00	15.440	10.04	322.6	0.0	658.3
85.00		1.00	0.94	18.584	20.44	257.76	0.650	*	0.00	5.00	14.976	9.73	318.4	0.0	638.3
87.54	Bot - Section 3	1.00	0.95	18.741	20.61	254.71	1.200	*	0.00	2.54	7.430	8.92	294.1	0.0	316.6
90.00		1.00	0.95	18.890	20.77	251.69	1.200	*	0.00	2.46	7.212	8.65	287.7	0.0	558.2
92.46	Top - Section 2	1.00	0.96	19.036	20.94	248.63	1.200	*	0.00	2.46	7.090	8.51	285.0	0.0	548.6
95.00		1.00	0.97	19.184	21.10	250.09	1.200	*	0.00	2.54	7.222	8.67	292.6	0.0	256.8
100.0		1.00	0.98	19.467	21.41	243.63	1.200	*	0.00	5.00	13.848	16.62	569.3	0.0	492.3
105.0		1.00	1.00	19.741	21.71	236.97	1.200	*	0.00	5.00	13.383	16.06	558.0	0.0	475.7
110.0		1.00	1.01	20.005	22.00	230.13	1.200	*	0.00	5.00	12.919	15.50	545.8	0.0	459.0
114.5	Appertunance(s)	1.00	1.02	20.235	22.25	223.82	1.200	*	0.00	4.50	11.230	13.48	479.9	0.0	398.9
115.0		1.00	1.02	20.260	22.28	223.12	0.650	*	0.00	0.50	1.225	0.80	28.4	0.0	43.5
120.0		1.00	1.04	20.508	22.55	215.95	0.650	*	0.00	5.00	11.991	7.79	281.3	0.0	425.7
125.0	Appertunance(s)	1.00	1.05	20.749	22.82	208.64	0.650	*	0.00	5.00	11.526	7.49	273.6	0.0	409.0
130.0		1.00	1.06	20.983	23.08	201.19	0.650	*	0.00	5.00	11.062	7.19	265.5	0.0	392.3
132.1	Bot - Section 4	1.00	1.07	21.080	23.18	197.99	0.650	*	0.00	2.12	4.550	2.96	109.7	0.0	161.3
134.0	Appertunance(s)	1.00	1.07	21.165	23.28	195.13	0.650	*	0.00	1.88	4.025	2.62	97.5	0.0	226.6
135.0		1.00	1.07	21.210	23.33	193.60	0.650	*	0.00	1.00	2.114	1.37	51.3	0.0	119.0
135.8	Top - Section 3	1.00	1.07	21.249	23.37	192.27	0.650	*	0.00	0.87	1.824	1.19	44.3	0.0	102.6
140.0		1.00	1.08	21.432	23.57	188.88	0.650	*	0.00	4.13	8.469	5.50	207.6	0.0	181.0
142.0	Appertunance(s)	1.00	1.09	21.519	23.67	185.77	0.650	*	0.00	2.00	3.987	2.59	98.1	0.0	85.2
145.0		1.00	1.09	21.648	23.81	181.07	0.650	*	0.00	3.00	5.841	3.80	144.7	0.0	124.8
150.0		1.00	1.11	21.858	24.04	173.14	0.650	*	0.00	5.00	9.364	6.09	234.2	0.0	200.0
155.0		1.00	1.12	22.064	24.27	165.11	0.650	*	0.00	5.00	8.900	5.78	224.6	0.0	190.0
160.0		1.00	1.13	22.265	24.49	156.98	0.650	*	0.00	5.00	8.435	5.48	214.9	0.0	180.0
165.0		1.00	1.14	22.462	24.70	148.75	0.650	*	0.00	5.00	7.971	5.18	204.8	0.0	170.0
170.0		1.00	1.15	22.654	24.92	140.42	0.650	*	0.00	5.00	7.507	4.88	194.6	0.0	160.0
174.0	Appertunance(s)	1.00	1.15	22.805	25.08	133.70	0.650	*	0.00	4.00	5.671	3.69	148.0	0.0	120.8
175.0		1.00	1.16	22.843	25.12	132.01	0.650	*	0.00	1.00	1.371	0.89	35.8	0.0	29.2
180.0	Appertunance(s)	1.00	1.16	23.027	25.33	123.50	0.650	*	0.00	5.00	6.579	4.28	173.3	0.0	140.0
						Totals:						11,916.7	0.0	22,744.0	

* = Cf Adjusted By Linear Load Ra Effect

Pole : 302506
 Location : Winchester CT 3, CT
 Height : 180.0 (ft)
 Shape : 18 Sides
 Base Dia : 52.75 (in)
 Top Dia : 15.00 (in)
 Taper : 0.219444 (in/ft)

Code: ANSI/TIA-222 Rev G
 Struct Class : II
 Exposure Category : B
 Topographic Category : 1

Base Elev : 0.000 (ft)



Load Case: 0.9D + 1.6W 90.00 mph with No Ice (Reduced DL) 29 Iterations
 Gust Response Factor : 1.10 Wind Importance Factor : 1.00
 Dead Load Factor : 0.90
 Wind Load Factor : 1.60

Discrete Appurtenance Segment Forces (Factored)

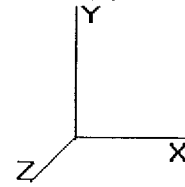
Elev (ft)	Description	Qty	qz (psf)	qzGh (psf)	CaAa Factor	Ka	Total CaAa (sf)	Horiz Ecc (ft)	Vert Ecc (ft)	Wind FX (lb)	Mom Y (lb-ft)	Mom Z (lb-ft)	Dead Load (lb)
46.50	Nokia CS72187.01	1	15.642	17.206	1.00	1.00	1.00	0.000	0.000	27.53	0.00	0.00	9.00
114.5	Round Low Profile PI	1	20.235	22.259	1.00	1.00	21.70	0.000	0.000	772.82	0.00	0.00	1,350.00
114.5	Decibel DB844H90E-	12	20.235	22.259	0.74	0.80	33.30	0.000	0.000	1,186.00	0.00	0.00	151.20
125.0	Round Low Profile PI	1	20.749	22.824	1.00	1.00	21.70	0.000	0.000	792.44	0.00	0.00	1,350.00
125.0	Antel LPA-80063/6CF	2	20.749	22.824	0.75	0.80	15.55	0.000	0.000	567.91	0.00	0.00	48.60
125.0	Antel LPA-80080/6CF	4	20.749	22.824	0.59	0.80	21.55	0.000	0.000	786.92	0.00	0.00	75.60
125.0	Decibel DB950F85E-M	4	20.749	22.824	0.66	0.80	11.26	0.000	0.000	411.25	0.00	0.00	41.40
125.0	Decibel DB950F65E-M	2	20.749	22.824	0.66	0.80	5.88	0.000	0.000	214.84	0.00	0.00	28.80
134.0	Flat Platform w/ Han	1	21.165	23.282	1.00	1.00	42.40	0.000	0.000	1,579.43	0.00	0.00	1,800.00
134.0	Andrew DB980H90E-M	9	21.165	23.282	0.59	0.75	20.80	0.000	0.000	774.70	0.00	0.00	68.85
142.0	Side Arms	2	21.519	23.671	1.00	1.00	10.40	0.000	0.000	393.88	0.00	0.00	270.00
142.0	56" Dipole	1	21.519	23.671	1.00	1.00	1.76	0.000	0.000	66.66	0.00	0.00	22.50
142.0	10' Omni	2	21.733	23.906	1.00	1.00	6.00	0.000	5.000	229.50	0.00	1,147.48	18.00
174.0	Flat Low Profile Pla	1	22.805	25.086	1.00	1.00	26.10	0.000	0.000	1,047.58	0.00	0.00	1,350.00
174.0	Antel LPD-7905/4	4	22.805	25.086	0.62	0.80	11.01	0.000	0.000	441.81	0.00	0.00	79.20
174.0	Nokia CS72993.07	4	22.805	25.086	0.54	0.80	3.06	0.000	0.000	122.97	0.00	0.00	63.36
174.0	Decibel	2	22.805	25.086	0.65	0.80	7.86	0.000	0.000	315.59	0.00	0.00	36.00
180.0	Yagi	1	23.027	25.330	1.00	1.00	3.00	0.000	0.000	121.58	0.00	0.00	9.00
180.0	10' Omni	1	23.208	25.529	1.00	1.00	3.00	0.000	5.000	122.54	0.00	612.70	9.00
180.0	CSS DUO4-8670	12	23.172	25.490	0.66	0.80	51.40	0.000	4.000	2,096.43	0.00	8,385.72	718.20
180.0	Flat Low Profile Pla	1	23.027	25.330	1.00	1.00	26.10	0.000	0.000	1,057.78	0.00	0.00	1,350.00
										13,130.15			8,848.71

Pole : 302506
 Location : Winchester CT 3, CT
 Height : 180.0 (ft)
 Shape : 18 Sides
 Base Dia : 52.75 (in)
 Top Dia : 15.00 (in)
 Taper : 0.219444 (in/ft)

Code: ANSI/TIA-222 Rev G
 Struct Class : II
 Exposure Category : B
 Topographic Category : 1

Base Elev : 0.000 (ft)

Copyright Semaan Engineering Solutions, Inc
 8/26/2008 4:34:27 PM
 Page: 12



Load Case: 0.9D + 1.6W 90.00 mph with No Ice (Reduced DL) 29 Iterations

Gust Response Factor : 1.10 Wind Importance Factor : 1.00

Dead Load Factor : 0.90

Wind Load Factor : 1.60

Linear Appurtenance Segment Forces (Factored)

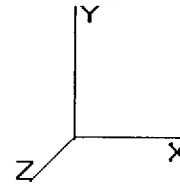
Seg Top Elev (ft)	Description	Exposed To Wind	Length (ft)	Ca	Exposed Width (in)	Area (sqft)	CaAa (sqft)	qz (psf)	Ra	Cf Adjust Factor	FX (lb)	Dead Load (lb)
5.00	(12) 1 5/8" Coax	Yes	5.00	0.000	3.96	1.65	0.00	13.789	0.133	1.100	0.00	44.27
5.00	(12) 1 1/4" Coax	Yes	5.00	0.000	3.10	1.29	0.00	13.789	0.133	1.100	0.00	34.01
10.00	(12) 1 5/8" Coax	Yes	5.00	0.000	3.96	1.65	0.00	13.789	0.136	1.108	0.00	44.27
10.00	(12) 1 1/4" Coax	Yes	5.00	0.000	3.10	1.29	0.00	13.789	0.136	1.108	0.00	34.01
15.00	(12) 1 5/8" Coax	Yes	5.00	0.000	3.96	1.65	0.00	13.789	0.139	1.117	0.00	44.27
15.00	(12) 1 1/4" Coax	Yes	5.00	0.000	3.10	1.29	0.00	13.789	0.139	1.117	0.00	34.01
20.00	(12) 1 5/8" Coax	Yes	5.00	0.000	3.96	1.65	0.00	13.789	0.142	1.126	0.00	44.27
20.00	(12) 1 1/4" Coax	Yes	5.00	0.000	3.10	1.29	0.00	13.789	0.142	1.126	0.00	34.01
25.00	(12) 1 5/8" Coax	Yes	5.00	0.000	3.96	1.65	0.00	13.789	0.145	1.136	0.00	44.27
25.00	(12) 1 1/4" Coax	Yes	5.00	0.000	3.10	1.29	0.00	13.789	0.145	1.136	0.00	34.01
30.00	(12) 1 5/8" Coax	Yes	5.00	0.000	3.96	1.65	0.00	13.801	0.149	1.146	0.00	44.27
30.00	(12) 1 1/4" Coax	Yes	5.00	0.000	3.10	1.29	0.00	13.801	0.149	1.146	0.00	34.01
35.00	(12) 1 5/8" Coax	Yes	5.00	0.000	3.96	1.65	0.00	14.423	0.152	1.157	0.00	44.27
35.00	(12) 1 1/4" Coax	Yes	5.00	0.000	3.10	1.29	0.00	14.423	0.152	1.157	0.00	34.01
40.00	(12) 1 5/8" Coax	Yes	5.00	0.000	3.96	1.65	0.00	14.983	0.156	1.169	0.00	44.27
40.00	(12) 1 1/4" Coax	Yes	5.00	0.000	3.10	1.29	0.00	14.983	0.156	1.169	0.00	34.01
42.96	(12) 1 5/8" Coax	Yes	2.96	0.000	3.96	0.98	0.00	15.292	0.159	1.178	0.00	26.18
42.96	(12) 1 1/4" Coax	Yes	2.96	0.000	3.10	0.76	0.00	15.292	0.159	1.178	0.00	20.11
45.00	(12) 1 5/8" Coax	Yes	2.04	0.000	3.96	0.67	0.00	15.496	0.161	1.184	0.00	18.09
45.00	(12) 1 1/4" Coax	Yes	2.04	0.000	3.10	0.53	0.00	15.496	0.161	1.184	0.00	13.90
46.50	(12) 1 5/8" Coax	Yes	1.50	0.000	3.96	0.50	0.00	15.642	0.163	1.188	0.00	13.28
46.50	(12) 1 1/4" Coax	Yes	1.50	0.000	3.10	0.39	0.00	15.642	0.163	1.188	0.00	10.20
49.04	(12) 1 5/8" Coax	Yes	2.54	0.000	3.96	0.84	0.00	15.882	0.164	1.193	0.00	22.49
49.04	(12) 1 1/4" Coax	Yes	2.54	0.000	3.10	0.66	0.00	15.882	0.164	1.193	0.00	17.28
50.00	(12) 1 5/8" Coax	Yes	0.96	0.000	3.96	0.32	0.00	15.970	0.163	1.189	0.00	8.50
50.00	(12) 1 1/4" Coax	Yes	0.96	0.000	3.10	0.25	0.00	15.970	0.163	1.189	0.00	6.53
55.00	(12) 1 5/8" Coax	Yes	5.00	0.000	3.96	1.65	0.00	16.411	0.166	1.197	0.00	44.27
55.00	(12) 1 1/4" Coax	Yes	5.00	0.000	3.10	1.29	0.00	16.411	0.166	1.197	0.00	34.01
60.00	(12) 1 5/8" Coax	Yes	5.00	0.000	3.96	1.65	0.00	16.824	0.170	1.210	0.00	44.27
60.00	(12) 1 1/4" Coax	Yes	5.00	0.000	3.10	1.29	0.00	16.824	0.170	1.210	0.00	34.01
65.00	(12) 1 5/8" Coax	Yes	5.00	0.000	3.96	1.65	0.00	17.213	0.175	1.224	0.00	44.27
65.00	(12) 1 1/4" Coax	Yes	5.00	0.000	3.10	1.29	0.00	17.213	0.175	1.224	0.00	34.01
70.00	(12) 1 5/8" Coax	Yes	5.00	0.000	3.96	1.65	0.00	17.581	0.180	1.239	0.00	44.27
70.00	(12) 1 1/4" Coax	Yes	5.00	0.000	3.10	1.29	0.00	17.581	0.180	1.239	0.00	34.01
75.00	(12) 1 5/8" Coax	Yes	5.00	0.000	3.96	1.65	0.00	17.931	0.185	1.255	0.00	44.27
75.00	(12) 1 1/4" Coax	Yes	5.00	0.000	3.10	1.29	0.00	17.931	0.185	1.255	0.00	34.01
80.00	(12) 1 5/8" Coax	Yes	5.00	0.000	3.96	1.65	0.00	18.265	0.191	1.272	0.00	44.27
80.00	(12) 1 1/4" Coax	Yes	5.00	0.000	3.10	1.29	0.00	18.265	0.191	1.272	0.00	34.01
85.00	(12) 1 5/8" Coax	Yes	5.00	0.000	3.96	1.65	0.00	18.584	0.196	1.289	0.00	44.27
85.00	(12) 1 1/4" Coax	Yes	5.00	0.000	3.10	1.29	0.00	18.584	0.196	1.289	0.00	34.01
87.54	(12) 1 5/8" Coax	Yes	2.54	1.200	3.96	0.84	1.01	18.741	0.201	0.000	33.18	22.49
87.54	(12) 1 1/4" Coax	Yes	2.54	1.200	3.10	0.66	0.79	18.741	0.201	0.000	25.97	17.28
90.00	(12) 1 5/8" Coax	Yes	2.46	1.200	3.96	0.81	0.97	18.890	0.204	0.000	32.39	21.78
90.00	(12) 1 1/4" Coax	Yes	2.46	1.200	3.10	0.64	0.76	18.890	0.204	0.000	25.35	16.74
92.46	(12) 1 5/8" Coax	Yes	2.46	1.200	3.96	0.81	0.97	19.036	0.208	0.000	32.59	21.75
92.46	(12) 1 1/4" Coax	Yes	2.46	1.200	3.10	0.63	0.76	19.036	0.208	0.000	25.51	16.71
95.00	(12) 1 5/8" Coax	Yes	2.54	1.200	3.96	0.84	1.01	19.184	0.207	0.000	34.01	22.52
95.00	(12) 1 1/4" Coax	Yes	2.54	1.200	3.10	0.66	0.79	19.184	0.207	0.000	26.62	17.30
100.0	(12) 1 5/8" Coax	Yes	5.00	1.200	3.96	1.65	1.98	19.467	0.212	0.000	67.84	44.27
100.0	(12) 1 1/4" Coax	Yes	5.00	1.200	3.10	1.29	1.55	19.467	0.212	0.000	53.11	34.01
105.0	(12) 1 5/8" Coax	Yes	5.00	1.200	3.96	1.65	1.98	19.741	0.220	0.000	68.79	44.27

Pole : 302506
 Location : Winchester CT 3, CT
 Height : 180.0 (ft)
 Shape : 18 Sides
 Base Dia : 52.75 (in)
 Top Dia : 15.00 (in)
 Taper : 0.219444 (in/ft)

Code: ANSI/TIA-222 Rev G
 Struct Class : II
 Exposure Category : B
 Topographic Category : 1

Base Elev : 0.000 (ft)

Copyright Semaan Engineering Solutions, Inc
 8/26/2008 4:34:28 PM
 Page : 14



Load Case: 0.9D + 1.6W	90.00 mph with No Ice (Reduced DL)	29 Iterations
Gust Response Factor : 1.10		Wind Importance Factor : 1.00
Dead Load Factor : 0.90		
Wind Load Factor : 1.60		

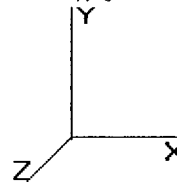
Applied Segment Forces Summary

Seg Elev (ft)	Lateral FX (-) (lb)	Axial FY (-) (lb)	Torsion MY (lb-ft)	Moment MZ (lb-ft)
0.00	0.00	0.00	0.00	0.00
5.00	348.41	1,321.96	0.00	0.00
10.00	341.09	1,298.63	0.00	0.00
15.00	333.76	1,275.30	0.00	0.00
20.00	326.44	1,251.97	0.00	0.00
25.00	319.12	1,228.64	0.00	0.00
30.00	312.06	1,205.31	0.00	0.00
35.00	318.45	1,181.98	0.00	0.00
40.00	322.88	1,158.65	0.00	0.00
42.96	191.03	674.15	0.00	0.00
45.00	134.41	784.98	0.00	0.00
46.50	126.24	580.62	0.00	0.00
49.04	167.97	958.67	0.00	0.00
50.00	63.28	190.25	0.00	0.00
55.00	333.44	978.89	0.00	0.00
60.00	332.90	958.89	0.00	0.00
65.00	331.46	938.90	0.00	0.00
70.00	329.22	918.90	0.00	0.00
75.00	326.25	898.90	0.00	0.00
80.00	322.62	878.91	0.00	0.00
85.00	318.39	858.91	0.00	0.00
87.54	353.22	428.65	0.00	0.00
90.00	345.47	666.81	0.00	0.00
92.46	343.13	657.00	0.00	0.00
95.00	353.25	369.08	0.00	0.00
100.0	690.29	712.98	0.00	0.00
105.0	680.62	696.32	0.00	0.00
110.0	670.12	679.65	0.00	0.00
114.5	2,551.91	2,098.64	0.00	0.00
115.0	28.38	62.15	0.00	0.00
120.0	281.32	612.31	0.00	0.00
125.0	3,046.95	2,140.05	0.00	0.00
130.0	265.54	534.71	0.00	0.00
132.1	109.72	221.66	0.00	0.00
134.0	2,451.59	2,149.01	0.00	0.00
135.0	51.30	140.83	0.00	0.00
135.8	44.34	121.62	0.00	0.00
140.0	207.63	271.15	0.00	0.00
142.0	788.18	439.35	0.00	1,147.48
145.0	144.66	181.02	0.00	0.00
150.0	234.15	293.69	0.00	0.00
155.0	224.64	283.69	0.00	0.00
160.0	214.86	273.70	0.00	0.00
165.0	204.83	263.70	0.00	0.00
170.0	194.55	253.70	0.00	0.00
174.0	2,075.92	1,724.32	0.00	0.00
175.0	35.84	39.09	0.00	0.00
180.0	3,571.63	2,275.63	0.00	8,998.42
Totals:	25,763.49	38,133.91	0.00	10,145.90

Pole : 302506
 Location : Winchester CT 3, CT
 Height : 180.0 (ft)
 Shape : 18 Sides
 Base Dia : 52.75 (in)
 Top Dia : 15.00 (in)
 Taper : 0.219444 (in/ft)

Code: ANSI/TIA-222 Rev G
 Struct Class : II
 Exposure Category : B
 Topographic Category : 1

Base Elev : 0.000 (ft)



Load Case: 0.9D + 1.6W 90.00 mph with No Ice (Reduced DL) 29 Iterations
 Gust Response Factor : 1.10 Wind Importance Factor : 1.00
 Dead Load Factor : 0.90
 Wind Load Factor : 1.60

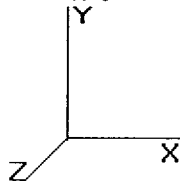
Calculated Forces

Seg Elev (ft)	Pu FY (-) (kips)	Vu FX (-) (kips)	Tu MY (ft-kips)	Mu MZ (ft-kips)	Mu MX (ft-kips)	Resultant Moment (ft-kips)	phi Pn (kips)	phi Vn (kips)	phi Tn (ft-kips)	phi Mn (ft-kips)	Total Deflect (in)	Rotation (deg)	Ratio
0.00	-38.09	-25.82	0.00	-3,188.12	0.00	3,188.12	4,249.43	2,124.71	9,129.72	4,571.64	0.00	0.00	0.706
5.00	-36.69	-25.59	0.00	-3,059.01	0.00	3,059.01	4,160.30	2,080.15	8,749.20	4,381.10	0.09	-0.18	0.707
10.00	-35.31	-25.35	0.00	-2,931.08	0.00	2,931.08	4,071.17	2,035.59	8,376.78	4,194.62	0.38	-0.36	0.708
15.00	-33.96	-25.12	0.00	-2,804.31	0.00	2,804.31	3,982.04	1,991.02	8,012.46	4,012.19	0.85	-0.54	0.708
20.00	-32.63	-24.89	0.00	-2,678.72	0.00	2,678.72	3,892.91	1,946.46	7,656.24	3,833.81	1.52	-0.73	0.707
25.00	-31.32	-24.66	0.00	-2,554.28	0.00	2,554.28	3,803.78	1,901.89	7,308.13	3,659.49	2.39	-0.92	0.706
30.00	-30.04	-24.43	0.00	-2,430.99	0.00	2,430.99	3,714.66	1,857.33	6,968.11	3,489.23	3.46	-1.12	0.705
35.00	-28.78	-24.19	0.00	-2,308.84	0.00	2,308.84	3,625.53	1,812.76	6,636.19	3,323.03	4.74	-1.32	0.703
40.00	-27.56	-23.92	0.00	-2,187.91	0.00	2,187.91	3,536.40	1,768.20	6,312.37	3,160.88	6.24	-1.53	0.700
42.96	-26.85	-23.76	0.00	-2,117.20	0.00	2,117.20	3,483.69	1,741.85	6,124.70	3,066.90	7.22	-1.65	0.698
45.00	-26.03	-23.63	0.00	-2,068.66	0.00	2,068.66	3,447.27	1,723.63	5,996.65	3,002.78	7.95	-1.74	0.697
46.50	-25.42	-23.53	0.00	-2,033.21	0.00	2,033.21	3,420.53	1,710.26	5,903.51	2,956.14	8.50	-1.80	0.695
49.04	-24.44	-23.36	0.00	-1,973.45	0.00	1,973.45	2,949.65	1,474.82	5,129.47	2,568.55	9.50	-1.92	0.777
50.00	-24.19	-23.35	0.00	-1,951.03	0.00	1,951.03	2,934.98	1,467.49	5,078.35	2,542.95	9.88	-1.96	0.776
55.00	-23.13	-23.08	0.00	-1,834.27	0.00	1,834.27	2,858.58	1,429.29	4,816.28	2,411.72	12.06	-2.20	0.769
60.00	-22.09	-22.80	0.00	-1,718.87	0.00	1,718.87	2,782.18	1,391.09	4,561.15	2,283.97	14.49	-2.44	0.761
65.00	-21.07	-22.52	0.00	-1,604.86	0.00	1,604.86	2,705.79	1,352.89	4,312.97	2,159.69	17.18	-2.69	0.751
70.00	-20.07	-22.24	0.00	-1,492.25	0.00	1,492.25	2,629.39	1,314.70	4,071.73	2,038.89	20.13	-2.94	0.740
75.00	-19.09	-21.95	0.00	-1,381.07	0.00	1,381.07	2,552.99	1,276.50	3,837.43	1,921.57	23.34	-3.19	0.726
80.00	-18.13	-21.65	0.00	-1,271.34	0.00	1,271.34	2,476.60	1,238.30	3,610.07	1,807.72	26.81	-3.44	0.711
85.00	-17.23	-21.34	0.00	-1,163.07	0.00	1,163.07	2,400.20	1,200.10	3,389.66	1,697.35	30.55	-3.70	0.693
87.54	-16.77	-21.00	0.00	-1,108.86	0.00	1,108.86	2,361.39	1,180.70	3,280.36	1,642.62	32.55	-3.83	0.682
90.00	-16.08	-20.65	0.00	-1,057.20	0.00	1,057.20	2,323.81	1,161.90	3,176.19	1,590.46	34.56	-3.96	0.672
92.46	-15.41	-20.29	0.00	-1,006.49	0.00	1,006.49	1,945.12	972.56	2,675.48	1,339.73	36.63	-4.09	0.760
95.00	-14.99	-19.97	0.00	-954.87	0.00	954.87	1,912.73	956.37	2,586.73	1,295.29	38.85	-4.22	0.745
100.00	-14.24	-19.30	0.00	-855.03	0.00	855.03	1,849.07	924.53	2,416.62	1,210.11	43.42	-4.51	0.715
105.00	-13.51	-18.63	0.00	-758.54	0.00	758.54	1,785.40	892.70	2,252.30	1,127.82	48.29	-4.79	0.681
110.00	-12.81	-17.96	0.00	-665.40	0.00	665.40	1,721.74	860.87	2,093.76	1,048.44	53.45	-5.07	0.643
114.50	-10.91	-15.26	0.00	-584.57	0.00	584.57	1,664.44	832.22	1,956.02	979.46	58.35	-5.32	0.604
115.00	-10.81	-15.25	0.00	-576.94	0.00	576.94	1,658.08	829.04	1,941.01	971.95	58.90	-5.34	0.600
120.00	-10.16	-14.96	0.00	-500.70	0.00	500.70	1,594.41	797.21	1,794.04	898.35	64.63	-5.61	0.564
125.00	-8.29	-11.75	0.00	-425.91	0.00	425.91	1,530.75	765.37	1,652.86	827.66	70.63	-5.86	0.520
130.00	-7.75	-11.45	0.00	-367.18	0.00	367.18	1,467.09	733.54	1,517.46	759.86	76.89	-6.10	0.489
132.12	-7.52	-11.33	0.00	-342.90	0.00	342.90	1,440.09	720.05	1,461.80	731.99	79.62	-6.21	0.474
134.00	-5.64	-8.67	0.00	-321.60	0.00	321.60	1,416.15	708.08	1,413.31	707.70	82.08	-6.30	0.459
135.00	-5.50	-8.60	0.00	-312.93	0.00	312.93	1,403.42	701.71	1,387.85	694.96	83.40	-6.35	0.454
135.87	-5.37	-8.56	0.00	-305.45	0.00	305.45	852.81	426.41	858.59	429.94	84.56	-6.39	0.717
140.00	-5.09	-8.34	0.00	-270.10	0.00	270.10	821.26	410.63	796.00	398.59	90.17	-6.59	0.684
142.00	-4.72	-7.52	0.00	-252.28	0.00	252.28	805.98	402.99	766.55	383.84	92.95	-6.74	0.663
145.00	-4.53	-7.38	0.00	-229.72	0.00	229.72	783.06	391.53	723.40	362.24	97.25	-6.96	0.640
150.00	-4.22	-7.13	0.00	-192.84	0.00	192.84	744.87	372.43	654.27	327.62	104.71	-7.31	0.595
155.00	-3.93	-6.90	0.00	-157.18	0.00	157.18	706.67	353.33	588.61	294.74	112.53	-7.65	0.539
160.00	-3.65	-6.67	0.00	-122.70	0.00	122.70	668.47	334.23	526.42	263.60	120.69	-7.97	0.471
165.00	-3.39	-6.44	0.00	-89.37	0.00	89.37	630.27	315.14	467.70	234.20	129.17	-8.25	0.387
170.00	-3.15	-6.22	0.00	-57.17	0.00	57.17	592.07	296.04	412.46	206.53	137.91	-8.48	0.283
174.00	-1.75	-3.91	0.00	-32.29	0.00	32.29	561.51	280.76	370.76	185.65	145.06	-8.62	0.177
175.00	-1.71	-3.87	0.00	-28.37	0.00	28.37	553.87	276.94	360.68	180.61	146.86	-8.65	0.160
180.00	0.00	-3.57	0.00	-9.00	0.00	9.00	515.68	257.84	312.38	156.42	155.94	-8.74	0.058

Pole : 302506
 Location : Winchester CT 3, CT
 Height : 180.0 (ft)
 Shape : 18 Sides
 Base Dia : 52.75 (in)
 Top Dia : 15.00 (in)
 Taper : 0.219444 (in/ft)

Code: ANSI/TIA-222 Rev G
 Struct Class : II
 Exposure Category : B
 Topographic Category : 1
 Base Elev : 0.000 (ft)

Copyright Semaan Engineering Solutions, Inc
 8/26/2008 4:34:28 PM
 Page: 16



Load Case: 1.2D + 1.0Di + 1.0Wi	40.00 mph with 1.25 in Radial Ice	29 Iterations
Gust Response Factor : 1.10	Ice Dead Load Factor : 1.00	Wind Importance Factor : 1.00
Dead Load Factor : 1.20		Ice Importance Factor : 1.00
Wind Load Factor : 1.00		

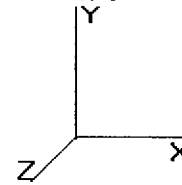
Shaft Segment Forces (Factored)

Seg Top Elev (ft)	Description	Kzt	Kz	qz (psf)	qzGh (psf)	C (mph-ft)	Cf	Ice Thick (in)	Tributary (ft)	Aa (sf)	CfAa (sf)	Wind Force X (lb)	Dead Load Ice (lb)	Tot Dead Load (lb)	
0.00		1.00	0.70	2.724	2.996	0.000	1.200	0.00	0.00	0.000	0.00	0.0	0.0	0.0	
5.00		1.00	0.70	2.724	2.996	0.000	1.200	*	2.07	5.00	23.811	28.57	85.6	696.5	2,164.0
10.00		1.00	0.70	2.724	2.996	0.000	1.200	*	2.21	5.00	23.471	28.16	84.4	733.3	2,169.7
15.00		1.00	0.70	2.724	2.996	0.000	1.200	*	2.31	5.00	23.083	27.70	83.0	749.0	2,154.3
20.00		1.00	0.70	2.724	2.996	0.000	1.200	*	2.37	5.00	22.675	27.21	81.5	755.5	2,129.7
25.00		1.00	0.70	2.724	2.996	0.000	1.200	*	2.43	5.00	22.255	26.71	80.0	756.7	2,099.8
30.00		1.00	0.70	2.726	2.999	0.000	1.200	*	2.47	5.00	21.829	26.19	78.6	754.3	2,066.2
35.00		1.00	0.73	2.849	3.134	0.000	1.200	*	2.51	5.00	21.396	25.68	80.5	749.3	2,030.2
40.00		1.00	0.76	2.960	3.256	0.000	1.200	*	2.54	5.00	20.960	25.15	81.9	742.4	1,992.1
42.96	Bot - Section 2	1.00	0.77	3.021	3.323	0.000	1.200	*	2.56	2.96	12.185	14.62	48.6	436.1	1,160.5
45.00		1.00	0.78	3.061	3.367	0.000	1.200	*	2.57	2.04	8.460	10.15	34.2	304.9	1,230.9
46.50	Appertunance(s)	1.00	0.79	3.090	3.399	0.000	1.200	*	2.58	1.50	6.163	7.40	25.1	223.0	896.6
49.04	Top - Section 1	1.00	0.80	3.137	3.451	0.000	1.200	*	2.60	2.54	10.346	12.42	42.8	375.1	1,503.9
50.00		1.00	0.81	3.155	3.470	0.000	1.200	*	2.60	0.96	3.881	4.66	16.2	141.4	338.6
55.00		1.00	0.83	3.242	3.566	0.000	1.200	*	2.63	5.00	19.954	23.94	85.4	725.8	1,736.8
60.00		1.00	0.85	3.323	3.656	0.000	1.200	*	2.65	5.00	19.509	23.41	85.6	714.3	1,698.6
65.00		1.00	0.87	3.400	3.740	0.000	1.200	*	2.67	5.00	19.062	22.87	85.6	702.0	1,659.6
70.00		1.00	0.89	3.473	3.820	0.000	1.200	*	2.69	5.00	18.615	22.34	85.3	689.0	1,620.0
75.00		1.00	0.91	3.542	3.896	0.000	1.200	*	2.71	5.00	18.166	21.80	84.9	675.4	1,579.8
80.00		1.00	0.92	3.608	3.969	0.000	1.200	*	2.73	5.00	17.716	21.26	84.4	661.3	1,539.0
85.00		1.00	0.94	3.671	4.038	0.000	1.200	*	2.74	5.00	17.266	20.72	83.7	646.7	1,497.7
87.54	Bot - Section 3	1.00	0.95	3.702	4.072	0.000	1.200	*	2.75	2.54	8.596	10.32	42.0	324.7	746.8
90.00		1.00	0.95	3.731	4.105	0.000	1.200	*	2.76	2.46	8.345	10.01	41.1	316.1	1,060.5
92.46	Top - Section 2	1.00	0.96	3.760	4.136	0.000	1.200	*	2.77	2.46	8.224	9.87	40.8	312.0	1,043.4
95.00		1.00	0.97	3.789	4.168	0.000	1.200	*	2.77	2.54	8.400	10.08	42.0	319.0	661.5
100.0		1.00	0.98	3.845	4.230	0.000	1.200	*	2.79	5.00	16.175	19.41	82.1	611.4	1,267.9
105.0		1.00	1.00	3.899	4.289	0.000	1.200	*	2.80	5.00	15.722	18.87	80.9	595.3	1,229.6
110.0		1.00	1.01	3.952	4.347	0.000	1.200	*	2.82	5.00	15.269	18.32	79.6	579.0	1,191.0
114.5	Appertunance(s)	1.00	1.02	3.997	4.397	0.000	1.200	*	2.83	4.50	13.354	16.02	70.5	507.6	1,039.4
115.0		1.00	1.02	4.002	4.402	0.000	1.200	*	2.83	0.50	1.461	1.75	7.7	56.2	114.2
120.0		1.00	1.04	4.051	4.456	0.000	1.200	*	2.84	5.00	14.361	17.23	76.8	545.3	1,112.9
125.0	Appertunance(s)	1.00	1.05	4.099	4.508	0.000	1.200	*	2.85	5.00	13.907	16.69	75.2	528.1	1,073.5
130.0		1.00	1.06	4.145	4.559	0.000	1.200		2.86	5.00	13.452	16.14	73.6	510.7	1,033.8
132.1	Bot - Section 4	1.00	1.07	4.164	4.580	0.000	1.200		2.87	2.12	5.564	6.68	30.6	213.3	428.4
134.0	Appertunance(s)	1.00	1.07	4.181	4.599	0.000	1.200		2.87	1.88	4.927	5.91	27.2	189.3	491.4
135.0		1.00	1.07	4.190	4.609	0.000	1.200		2.87	1.00	2.594	3.11	14.3	100.0	258.6
135.8	Top - Section 3	1.00	1.07	4.197	4.617	0.000	1.200		2.88	0.87	2.241	2.69	12.4	86.4	223.3
140.0		1.00	1.08	4.233	4.657	0.000	1.200		2.88	4.13	10.457	12.55	58.4	398.1	639.4
142.0	Appertunance(s)	1.00	1.09	4.251	4.676	0.000	1.200		2.89	2.00	4.951	5.94	27.8	189.9	303.5
145.0		1.00	1.09	4.276	4.704	0.000	1.200		2.89	3.00	7.291	8.75	41.2	278.3	444.7
150.0		1.00	1.11	4.318	4.749	0.000	1.200		2.90	5.00	11.788	14.15	67.2	445.6	712.3
155.0		1.00	1.12	4.358	4.794	0.000	1.200		2.91	5.00	11.332	13.60	65.2	427.2	680.5
160.0		1.00	1.13	4.398	4.838	0.000	1.200		2.92	5.00	10.875	13.05	63.1	408.6	648.6
165.0		1.00	1.14	4.437	4.881	0.000	1.200		2.93	5.00	10.418	12.50	61.0	389.8	616.5
170.0		1.00	1.15	4.475	4.922	0.000	1.200		2.94	5.00	9.961	11.95	58.8	370.9	584.2
174.0	Appertunance(s)	1.00	1.15	4.505	4.955	0.000	1.200		2.95	4.00	7.639	9.17	45.4	284.5	445.6
175.0		1.00	1.16	4.512	4.963	0.000	1.200		2.95	1.00	1.864	2.24	11.1	70.4	109.3
180.0	Appertunance(s)	1.00	1.16	4.549	5.003	0.000	1.200		2.96	5.00	9.047	10.86	54.3	332.6	519.2
* = Cf Adjusted By Linear Load Ra Effect								Totals:		180.00		2,767.7	21,622.4	51,947.7	

Pole : 302506
 Location : Winchester CT 3, CT
 Height : 180.0 (ft)
 Shape : 18 Sides
 Base Dia : 52.75 (in)
 Top Dia : 15.00 (in)
 Taper : 0.219444 (in/ft)

Code: ANSI/TIA-222 Rev G
 Struct Class : II
 Exposure Category : B
 Topographic Category : 1

Base Elev : 0.000 (ft)



Load Case: 1.2D + 1.0Di + 1.0Wi 40.00 mph with 1.25 in Radial Ice 29 Iterations

Gust Response Factor : 1.10 Ice Dead Load Factor : 1.00 Wind Importance Factor : 1.00

Dead Load Factor : 1.20 Ice Importance Factor : 1.00

Wind Load Factor : 1.00

Discrete Appurtenance Segment Forces (Factored)

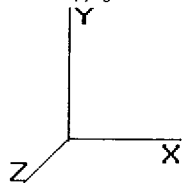
Elev (ft)	Description	Qty	qz (psf)	qzGh (psf)	CaAa Factor	Ka	Total CaAa (sf)	Horiz Ecc (ft)	Vert Ecc (ft)	Wind FX (lb)	Mom Y (lb-ft)	Mom Z (lb-ft)	Dead Load (lb)
46.50	Nokia CS72187.01	1	3.090	3.399	1.00	1.00	2.08	0.000	0.000	7.08	0.00	0.00	46.42
114.5	Round Low Profile PI	1	3.997	4.397	1.00	1.00	52.91	0.000	0.000	232.63	0.00	0.00	2,653.20
114.5	Decibel DB844H90E-	12	3.997	4.397	0.74	0.80	45.92	0.000	0.000	201.90	0.00	0.00	2,698.63
125.0	Round Low Profile PI	1	4.099	4.508	1.00	1.00	53.18	0.000	0.000	239.78	0.00	0.00	2,662.48
125.0	Antel LPA-80063/6CF	2	4.099	4.508	0.75	0.80	17.83	0.000	0.000	80.40	0.00	0.00	1,092.87
125.0	Antel LPA-80080/6CF	4	4.099	4.508	0.60	0.80	26.08	0.000	0.000	117.58	0.00	0.00	1,539.82
125.0	Decibel DB950F85E-M	4	4.099	4.508	0.68	0.80	16.42	0.000	0.000	74.02	0.00	0.00	889.13
125.0	Decibel DB950F65E-M	2	4.099	4.508	0.67	0.80	10.78	0.000	0.000	48.59	0.00	0.00	643.81
134.0	Flat Platform w/ Han	1	4.181	4.599	1.00	1.00	77.03	0.000	0.000	354.26	0.00	0.00	4,296.85
134.0	Andrew DB980H90E-M	9	4.181	4.599	0.62	0.75	31.54	0.000	0.000	145.06	0.00	0.00	1,783.95
142.0	Side Arms	2	4.251	4.676	1.00	1.00	19.43	0.000	0.000	90.83	0.00	0.00	552.99
142.0	56" Dipole	1	4.251	4.676	1.00	1.00	3.80	0.000	0.000	17.75	0.00	0.00	45.69
142.0	10' Omni	2	4.293	4.722	1.00	1.00	14.77	0.000	5.000	69.77	0.00	348.84	583.28
174.0	Flat Low Profile Pla	1	4.505	4.955	1.00	1.00	58.46	0.000	0.000	289.69	0.00	0.00	2,698.21
174.0	Antel LPD-7905/4	4	4.505	4.955	0.63	0.80	10.03	0.000	0.000	49.72	0.00	0.00	979.91
174.0	Nokia CS72993.07	4	4.505	4.955	0.54	0.80	4.50	0.000	0.000	22.28	0.00	0.00	406.52
174.0	Decibel	2	4.505	4.955	0.66	0.80	9.46	0.000	0.000	46.87	0.00	0.00	642.80
180.0	Yagi	1	4.549	5.003	1.00	1.00	6.55	0.000	0.000	32.80	0.00	0.00	8.85
180.0	10' Omni	1	4.584	5.043	1.00	1.00	7.48	0.000	5.000	37.70	0.00	188.51	302.02
180.0	CSS DUO4-8670	12	4.577	5.035	0.66	0.80	61.11	0.000	4.000	307.69	0.00	1,230.76	4,865.42
180.0	Flat Low Profile Pla	1	4.549	5.003	1.00	1.00	58.57	0.000	0.000	293.06	0.00	0.00	2,701.94
										2,759.46			32,094.81

Pole : 302506
 Location : Winchester CT 3, CT
 Height : 180.0 (ft)
 Shape : 18 Sides
 Base Dia : 52.75 (in)
 Top Dia : 15.00 (in)
 Taper : 0.219444 (in/ft)

Code: ANSI/TIA-222 Rev G
 Struct Class : II
 Exposure Category : B
 Topographic Category : 1

Base Elev : 0.000 (ft)

Copyright Semaan Engineering Solutions, Inc
 8/26/2008 4:34:29 PM
 Page: 18



Load Case: 1.2D + 1.0Di + 1.0Wi 40.00 mph with 1.25 in Radial Ice 29 Iterations

Gust Response Factor : 1.10 Ice Dead Load Factor : 1.00 Wind Importance Factor : 1.00
 Dead Load Factor : 1.20 Ice Importance Factor : 1.00
 Wind Load Factor : 1.00

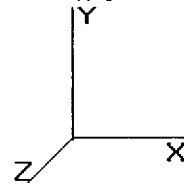
Linear Appurtenance Segment Forces (Factored)

Seg Top Elev (ft)	Description	Exposed To Wind	Length (ft)	Ca	Exposed Width (in)	Area (sqft)	CaAa (sqft)	qz (psf)	Ra	Cf Adjust Factor	FX (lb)	Dead Load (lb)
5.00	(12) 1 5/8" Coax	Yes	5.00	0.000	3.96	3.38	0.00	2.724	0.133	1.100	0.00	296.12
5.00	(12) 1 1/4" Coax	Yes	5.00	0.000	3.10	3.02	0.00	2.724	0.133	1.100	0.00	233.28
10.00	(12) 1 5/8" Coax	Yes	5.00	0.000	3.96	3.50	0.00	2.724	0.136	1.108	0.00	313.74
10.00	(12) 1 1/4" Coax	Yes	5.00	0.000	3.10	3.14	0.00	2.724	0.136	1.108	0.00	247.92
15.00	(12) 1 5/8" Coax	Yes	5.00	0.000	3.96	3.58	0.00	2.724	0.139	1.117	0.00	324.76
15.00	(12) 1 1/4" Coax	Yes	5.00	0.000	3.10	3.22	0.00	2.724	0.139	1.117	0.00	257.10
20.00	(12) 1 5/8" Coax	Yes	5.00	0.000	3.96	3.63	0.00	2.724	0.142	1.126	0.00	332.92
20.00	(12) 1 1/4" Coax	Yes	5.00	0.000	3.10	3.27	0.00	2.724	0.142	1.126	0.00	263.91
25.00	(12) 1 5/8" Coax	Yes	5.00	0.000	3.96	3.68	0.00	2.724	0.145	1.136	0.00	339.46
25.00	(12) 1 1/4" Coax	Yes	5.00	0.000	3.10	3.32	0.00	2.724	0.145	1.136	0.00	269.37
30.00	(12) 1 5/8" Coax	Yes	5.00	0.000	3.96	3.71	0.00	2.726	0.149	1.146	0.00	344.93
30.00	(12) 1 1/4" Coax	Yes	5.00	0.000	3.10	3.36	0.00	2.726	0.149	1.146	0.00	273.95
35.00	(12) 1 5/8" Coax	Yes	5.00	0.000	3.96	3.75	0.00	2.849	0.152	1.157	0.00	349.66
35.00	(12) 1 1/4" Coax	Yes	5.00	0.000	3.10	3.39	0.00	2.849	0.152	1.157	0.00	277.90
40.00	(12) 1 5/8" Coax	Yes	5.00	0.000	3.96	3.77	0.00	2.960	0.156	1.169	0.00	353.83
40.00	(12) 1 1/4" Coax	Yes	5.00	0.000	3.10	3.42	0.00	2.960	0.156	1.169	0.00	281.39
42.96	(12) 1 5/8" Coax	Yes	2.96	0.000	3.96	2.24	0.00	3.021	0.159	1.178	0.00	210.56
42.96	(12) 1 1/4" Coax	Yes	2.96	0.000	3.10	2.03	0.00	3.021	0.159	1.178	0.00	167.51
45.00	(12) 1 5/8" Coax	Yes	2.04	0.000	3.96	1.55	0.00	3.061	0.161	1.184	0.00	146.13
45.00	(12) 1 1/4" Coax	Yes	2.04	0.000	3.10	1.41	0.00	3.061	0.161	1.184	0.00	116.28
46.50	(12) 1 5/8" Coax	Yes	1.50	0.000	3.96	1.14	0.00	3.090	0.163	1.188	0.00	107.58
46.50	(12) 1 1/4" Coax	Yes	1.50	0.000	3.10	1.03	0.00	3.090	0.163	1.188	0.00	85.62
49.04	(12) 1 5/8" Coax	Yes	2.54	0.000	3.96	1.94	0.00	3.137	0.164	1.193	0.00	183.04
49.04	(12) 1 1/4" Coax	Yes	2.54	0.000	3.10	1.76	0.00	3.137	0.164	1.193	0.00	145.71
50.00	(12) 1 5/8" Coax	Yes	0.96	0.000	3.96	0.73	0.00	3.155	0.163	1.189	0.00	69.31
50.00	(12) 1 1/4" Coax	Yes	0.96	0.000	3.10	0.67	0.00	3.155	0.163	1.189	0.00	55.18
55.00	(12) 1 5/8" Coax	Yes	5.00	0.000	3.96	3.84	0.00	3.242	0.166	1.197	0.00	364.06
55.00	(12) 1 1/4" Coax	Yes	5.00	0.000	3.10	3.48	0.00	3.242	0.166	1.197	0.00	289.97
60.00	(12) 1 5/8" Coax	Yes	5.00	0.000	3.96	3.86	0.00	3.323	0.170	1.210	0.00	366.92
60.00	(12) 1 1/4" Coax	Yes	5.00	0.000	3.10	3.50	0.00	3.323	0.170	1.210	0.00	292.37
65.00	(12) 1 5/8" Coax	Yes	5.00	0.000	3.96	3.88	0.00	3.400	0.175	1.224	0.00	369.59
65.00	(12) 1 1/4" Coax	Yes	5.00	0.000	3.10	3.52	0.00	3.400	0.175	1.224	0.00	294.61
70.00	(12) 1 5/8" Coax	Yes	5.00	0.000	3.96	3.90	0.00	3.473	0.180	1.239	0.00	372.08
70.00	(12) 1 1/4" Coax	Yes	5.00	0.000	3.10	3.54	0.00	3.473	0.180	1.239	0.00	296.70
75.00	(12) 1 5/8" Coax	Yes	5.00	0.000	3.96	3.91	0.00	3.542	0.185	1.255	0.00	374.42
75.00	(12) 1 1/4" Coax	Yes	5.00	0.000	3.10	3.55	0.00	3.542	0.185	1.255	0.00	298.67
80.00	(12) 1 5/8" Coax	Yes	5.00	0.000	3.96	3.93	0.00	3.608	0.191	1.272	0.00	376.63
80.00	(12) 1 1/4" Coax	Yes	5.00	0.000	3.10	3.57	0.00	3.608	0.191	1.272	0.00	300.52
85.00	(12) 1 5/8" Coax	Yes	5.00	0.000	3.96	3.94	0.00	3.671	0.196	1.289	0.00	378.72
85.00	(12) 1 1/4" Coax	Yes	5.00	0.000	3.10	3.58	0.00	3.671	0.196	1.289	0.00	302.28
87.54	(12) 1 5/8" Coax	Yes	2.54	1.200	3.96	2.00	2.41	3.702	0.201	0.000	9.80	192.90
87.54	(12) 1 1/4" Coax	Yes	2.54	1.200	3.10	1.82	2.19	3.702	0.201	0.000	8.91	153.99
90.00	(12) 1 5/8" Coax	Yes	2.46	1.200	3.96	1.95	2.33	3.731	0.204	0.000	9.58	187.31
90.00	(12) 1 1/4" Coax	Yes	2.46	1.200	3.10	1.77	2.12	3.731	0.204	0.000	8.71	149.55
92.46	(12) 1 5/8" Coax	Yes	2.46	1.200	3.96	1.95	2.33	3.760	0.208	0.000	9.66	187.51
92.46	(12) 1 1/4" Coax	Yes	2.46	1.200	3.10	1.77	2.12	3.760	0.208	0.000	8.78	149.72
95.00	(12) 1 5/8" Coax	Yes	2.54	1.200	3.96	2.02	2.42	3.789	0.207	0.000	10.09	194.62
95.00	(12) 1 1/4" Coax	Yes	2.54	1.200	3.10	1.84	2.20	3.789	0.207	0.000	9.18	155.42
100.0	(12) 1 5/8" Coax	Yes	5.00	1.200	3.96	3.98	4.77	3.845	0.212	0.000	20.19	384.40
100.0	(12) 1 1/4" Coax	Yes	5.00	1.200	3.10	3.62	4.34	3.845	0.212	0.000	18.37	307.06
105.0	(12) 1 5/8" Coax	Yes	5.00	1.200	3.96	3.99	4.79	3.899	0.220	0.000	20.53	386.13

Pole : 302506
 Location : Winchester CT 3, CT
 Height : 180.0 (ft)
 Shape : 18 Sides
 Base Dia : 52.75 (in)
 Top Dia : 15.00 (in)
 Taper : 0.219444 (in/ft)

Code: ANSI/TIA-222 Rev G
 Struct Class : II
 Exposure Category : B
 Topographic Category : 1

Base Elev : 0.000 (ft)



Load Case: 1.2D + 1.0Di + 1.0Wi	40.00 mph with 1.25 in Radial Ice	29 Iterations
Gust Response Factor : 1.10	Ice Dead Load Factor : 1.00	Wind Importance Factor : 1.00
Dead Load Factor : 1.20		Ice Importance Factor : 1.00
Wind Load Factor : 1.00		

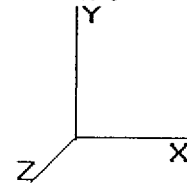
105.0	(12) 1 1/4" Coax	Yes	5.00	1.200	3.10	3.63	4.36	3.899	0.220	0.000	18.69	308.52
110.0	(12) 1 5/8" Coax	Yes	5.00	1.200	3.96	4.00	4.80	3.952	0.228	0.000	20.86	387.79
110.0	(12) 1 1/4" Coax	Yes	5.00	1.200	3.10	3.64	4.37	3.952	0.228	0.000	18.99	309.91
114.5	(12) 1 5/8" Coax	Yes	4.50	1.200	3.96	3.61	4.33	3.997	0.236	0.000	19.04	350.31
114.5	(12) 1 1/4" Coax	Yes	4.50	1.200	3.10	3.29	3.94	3.997	0.236	0.000	17.34	280.01
115.0	(12) 1 5/8" Coax	Yes	0.50	0.000	3.96	0.40	0.00	4.002	0.135	1.104	0.00	38.94
120.0	(12) 1 5/8" Coax	Yes	5.00	0.000	3.96	4.02	0.00	4.051	0.138	1.113	0.00	390.92
125.0	(12) 1 5/8" Coax	Yes	5.00	0.000	3.96	4.03	0.00	4.099	0.143	1.129	0.00	392.40
Totals:											228.72	15,632.11

Pole : 302506
 Location : Winchester CT 3, CT
 Height : 180.0 (ft)
 Shape : 18 Sides
 Base Dia : 52.75 (in)
 Top Dia : 15.00 (in)
 Taper : 0.219444 (in/ft)

Code: ANSI/TIA-222 Rev G
 Struct Class : II
 Exposure Category : B
 Topographic Category : 1

Base Elev : 0.000 (ft)

Copyright Semaan Engineering Solutions, Inc
 8/26/2008 4:34:29 PM
 Page : 20



Load Case: 1.2D + 1.0Di + 1.0Wi	40.00 mph with 1.25 in Radial Ice	29 Iterations
Gust Response Factor : 1.10	Ice Dead Load Factor : 1.00	Wind Importance Factor : 1.00
Dead Load Factor : 1.20		Ice Importance Factor : 1.00
Wind Load Factor : 1.00		

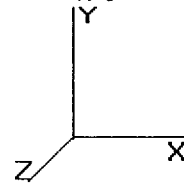
Applied Segment Forces Summary

Seg Elev (ft)	Lateral FX (-) (lb)	Axial FY (-) (lb)	Torsion MY (lb-ft)	Moment MZ (lb-ft)
0.00	0.00	0.00	0.00	0.00
5.00	85.61	2,884.13	0.00	0.00
10.00	84.39	2,922.06	0.00	0.00
15.00	82.99	2,926.92	0.00	0.00
20.00	81.53	2,917.28	0.00	0.00
25.00	80.02	2,899.30	0.00	0.00
30.00	78.55	2,875.83	0.00	0.00
35.00	80.46	2,848.43	0.00	0.00
40.00	81.89	2,818.06	0.00	0.00
42.96	48.58	1,651.32	0.00	0.00
45.00	34.18	1,571.29	0.00	0.00
46.50	32.22	1,193.45	0.00	0.00
49.04	42.84	1,929.02	0.00	0.00
50.00	16.16	499.53	0.00	0.00
55.00	85.38	2,580.64	0.00	0.00
60.00	85.58	2,547.72	0.00	0.00
65.00	85.55	2,513.66	0.00	0.00
70.00	85.33	2,478.60	0.00	0.00
75.00	84.93	2,442.66	0.00	0.00
80.00	84.37	2,405.95	0.00	0.00
85.00	83.66	2,368.55	0.00	0.00
87.54	60.71	1,190.07	0.00	0.00
90.00	59.40	1,490.72	0.00	0.00
92.46	59.26	1,473.94	0.00	0.00
95.00	61.29	1,108.08	0.00	0.00
100.0	120.67	2,149.14	0.00	0.00
105.0	120.15	2,114.03	0.00	0.00
110.0	119.50	2,078.48	0.00	0.00
114.5	541.37	7,192.35	0.00	0.00
115.0	7.72	172.13	0.00	0.00
120.0	76.79	1,693.64	0.00	0.00
125.0	635.60	8,483.82	0.00	0.00
130.0	73.59	1,223.63	0.00	0.00
132.1	30.58	508.90	0.00	0.00
134.0	526.50	6,643.62	0.00	0.00
135.0	14.35	287.73	0.00	0.00
135.8	12.42	248.57	0.00	0.00
140.0	58.44	759.63	0.00	0.00
142.0	206.13	1,543.66	0.00	348.84
145.0	41.15	519.68	0.00	0.00
150.0	67.18	837.22	0.00	0.00
155.0	65.19	805.46	0.00	0.00
160.0	63.13	773.52	0.00	0.00
165.0	61.02	741.42	0.00	0.00
170.0	58.84	709.17	0.00	0.00
174.0	453.99	5,272.98	0.00	0.00
175.0	11.10	122.48	0.00	0.00
180.0	725.57	8,463.40	0.00	1,419.27
Totals:	5,755.87	105,881.8	0.00	1,768.11

Pole : 302506
 Location : Winchester CT 3, CT
 Height : 180.0 (ft)
 Shape : 18 Sides
 Base Dia : 52.75 (in)
 Top Dia : 15.00 (in)
 Taper : 0.219444 (in/ft)

Code: ANSI/TIA-222 Rev G
 Struct Class : II
 Exposure Category : B
 Topographic Category : 1

Base Elev : 0.000 (ft)



Load Case: 1.2D + 1.0Di + 1.0Wi	40.00 mph with 1.25 in Radial Ice	29 Iterations
Gust Response Factor : 1.10	Ice Dead Load Factor : 1.00	Wind Importance Factor : 1.00
Dead Load Factor : 1.20		Ice Importance Factor : 1.00
Wind Load Factor : 1.00		

Calculated Forces

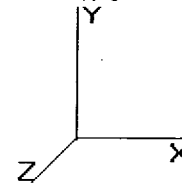
Seg Elev (ft)	Pu FY (-) (kips)	Vu FX (-) (kips)	Tu MY (ft-kips)	Mu MZ (ft-kips)	Mu MX (ft-kips)	Resultant Moment (ft-kips)	phi Pn (kips)	phi Vn (kips)	phi Tn (ft-kips)	phi Mn (ft-kips)	Total Deflect (in)	Rotation (deg)	Ratio
0.00	-105.88	-5.80	0.00	-793.11	0.00	793.11	4,249.43	2,124.71	9,129.72	4,571.64	0.00	0.00	0.198
5.00	-102.99	-5.79	0.00	-764.13	0.00	764.13	4,160.30	2,080.15	8,749.20	4,381.10	0.02	-0.04	0.199
10.00	-100.06	-5.78	0.00	-735.18	0.00	735.18	4,071.17	2,035.59	8,376.78	4,194.62	0.09	-0.09	0.200
15.00	-97.13	-5.77	0.00	-706.26	0.00	706.26	3,982.04	1,991.02	8,012.46	4,012.19	0.21	-0.14	0.200
20.00	-94.21	-5.76	0.00	-677.40	0.00	677.40	3,892.91	1,946.46	7,656.24	3,833.81	0.38	-0.18	0.201
25.00	-91.31	-5.75	0.00	-648.58	0.00	648.58	3,803.78	1,901.89	7,308.13	3,659.49	0.60	-0.23	0.201
30.00	-88.43	-5.74	0.00	-619.82	0.00	619.82	3,714.66	1,857.33	6,968.11	3,489.23	0.87	-0.28	0.201
35.00	-85.57	-5.72	0.00	-591.13	0.00	591.13	3,625.53	1,812.76	6,636.19	3,323.03	1.19	-0.33	0.202
40.00	-82.75	-5.68	0.00	-562.53	0.00	562.53	3,536.40	1,768.20	6,312.37	3,160.88	1.57	-0.39	0.201
42.96	-81.10	-5.66	0.00	-545.73	0.00	545.73	3,483.69	1,741.85	6,124.70	3,066.90	1.82	-0.42	0.201
45.00	-79.53	-5.64	0.00	-534.16	0.00	534.16	3,447.27	1,723.63	5,996.65	3,002.78	2.00	-0.44	0.201
46.50	-78.33	-5.63	0.00	-525.70	0.00	525.70	3,420.53	1,710.26	5,903.51	2,956.14	2.14	-0.46	0.201
49.04	-76.40	-5.60	0.00	-511.40	0.00	511.40	2,949.65	1,474.82	5,129.47	2,568.55	2.40	-0.49	0.225
50.00	-75.90	-5.63	0.00	-506.02	0.00	506.02	2,934.98	1,467.49	5,078.35	2,542.95	2.49	-0.50	0.225
55.00	-73.31	-5.60	0.00	-477.88	0.00	477.88	2,858.58	1,429.29	4,816.28	2,411.72	3.05	-0.56	0.224
60.00	-70.76	-5.57	0.00	-449.89	0.00	449.89	2,782.18	1,391.09	4,561.15	2,283.97	3.67	-0.62	0.222
65.00	-68.24	-5.53	0.00	-422.06	0.00	422.06	2,705.79	1,352.89	4,312.97	2,159.69	4.36	-0.69	0.221
70.00	-65.76	-5.49	0.00	-394.42	0.00	394.42	2,629.39	1,314.70	4,071.73	2,038.89	5.11	-0.75	0.218
75.00	-63.31	-5.45	0.00	-366.97	0.00	366.97	2,552.99	1,276.50	3,837.43	1,921.57	5.94	-0.82	0.216
80.00	-60.90	-5.40	0.00	-339.75	0.00	339.75	2,476.60	1,238.30	3,610.07	1,807.72	6.83	-0.89	0.213
85.00	-58.53	-5.33	0.00	-312.76	0.00	312.76	2,400.20	1,200.10	3,389.66	1,697.35	7.80	-0.96	0.209
87.54	-57.33	-5.28	0.00	-299.23	0.00	299.23	2,361.39	1,180.70	3,280.36	1,642.62	8.32	-0.99	0.206
90.00	-55.84	-5.23	0.00	-286.24	0.00	286.24	2,323.81	1,161.90	3,176.19	1,590.46	8.84	-1.03	0.204
92.46	-54.36	-5.18	0.00	-273.38	0.00	273.38	1,945.12	972.56	2,675.48	1,339.73	9.38	-1.06	0.232
95.00	-53.25	-5.15	0.00	-260.21	0.00	260.21	1,912.73	956.37	2,586.73	1,295.29	9.95	-1.10	0.229
100.00	-51.10	-5.06	0.00	-234.46	0.00	234.46	1,849.07	924.53	2,416.62	1,210.11	11.15	-1.18	0.221
105.00	-48.98	-4.96	0.00	-209.18	0.00	209.18	1,785.40	892.70	2,252.30	1,127.82	12.42	-1.26	0.213
110.00	-46.90	-4.85	0.00	-184.39	0.00	184.39	1,721.74	860.87	2,093.76	1,048.44	13.78	-1.33	0.203
114.50	-39.72	-4.16	0.00	-162.56	0.00	162.56	1,664.44	832.22	1,956.02	979.46	15.07	-1.40	0.190
115.00	-39.55	-4.18	0.00	-160.48	0.00	160.48	1,658.08	829.04	1,941.01	971.95	15.21	-1.41	0.189
120.00	-37.85	-4.11	0.00	-139.58	0.00	139.58	1,594.41	797.21	1,794.04	898.35	16.73	-1.48	0.179
125.00	-29.38	-3.28	0.00	-119.04	0.00	119.04	1,530.75	765.37	1,652.86	827.66	18.31	-1.55	0.163
130.00	-28.16	-3.20	0.00	-102.62	0.00	102.62	1,467.09	733.54	1,517.46	759.86	19.98	-1.62	0.154
132.12	-27.65	-3.17	0.00	-95.84	0.00	95.84	1,440.09	720.05	1,461.80	731.99	20.70	-1.65	0.150
134.00	-21.02	-2.46	0.00	-89.88	0.00	89.88	1,416.15	708.08	1,413.31	707.70	21.36	-1.68	0.142
135.00	-20.73	-2.44	0.00	-87.42	0.00	87.42	1,403.42	701.71	1,387.85	694.96	21.71	-1.69	0.141
135.87	-20.48	-2.43	0.00	-85.30	0.00	85.30	852.81	426.41	858.59	429.94	22.02	-1.70	0.222
140.00	-19.73	-2.37	0.00	-75.26	0.00	75.26	821.26	410.63	796.00	398.59	23.51	-1.76	0.213
142.00	-18.19	-2.13	0.00	-70.18	0.00	70.18	805.98	402.99	766.55	383.84	24.26	-1.80	0.205
145.00	-17.67	-2.10	0.00	-63.80	0.00	63.80	783.06	391.53	723.40	362.24	25.41	-1.86	0.199
150.00	-16.83	-2.03	0.00	-53.32	0.00	53.32	744.87	372.43	654.27	327.62	27.41	-1.96	0.185
155.00	-16.02	-1.96	0.00	-43.18	0.00	43.18	706.67	353.33	588.61	294.74	29.50	-2.05	0.169
160.00	-15.25	-1.89	0.00	-33.37	0.00	33.37	668.47	334.23	526.42	263.60	31.70	-2.14	0.149
165.00	-14.51	-1.82	0.00	-23.92	0.00	23.92	630.27	315.14	467.70	234.20	33.98	-2.21	0.125
170.00	-13.80	-1.74	0.00	-14.82	0.00	14.82	592.07	296.04	412.46	206.53	36.33	-2.27	0.095
174.00	-8.55	-1.08	0.00	-7.85	0.00	7.85	561.51	280.76	370.76	185.65	38.25	-2.31	0.057
175.00	-8.43	-1.07	0.00	-6.76	0.00	6.76	553.87	276.94	360.68	180.61	38.73	-2.32	0.053
180.00	0.00	-0.73	0.00	-1.42	0.00	1.42	515.68	257.84	312.38	156.42	41.17	-2.33	0.009

Pole : 302506
 Location : Winchester CT 3, CT
 Height : 180.0 (ft)
 Shape : 18 Sides
 Base Dia : 52.75 (in)
 Top Dia : 15.00 (in)
 Taper : 0.219444 (in/ft)

Code: ANSI/TIA-222 Rev G
 Struct Class : II
 Exposure Category : B
 Topographic Category : 1

Base Elev : 0.000 (ft)

Copyright Semaan Engineering Solutions, Inc
 8/26/2008 4:34:30 PM
 Page: 22



Load Case: 1.2D + 1.0E	Dead Load with Seismic	28 Iterations
Gust Response Factor : 1.10	Sds : 0.49	Ss : 0.33
Dead Load Factor : 1.20	Seismic Load Factor : 1.00	Sd1 : 0.02
Wind Load Factor : 0.00	Structure Frequency : 0.2641	SA : 0.01
		Seismic Importance Factor : 1.00

Total Segment Forces (Factored)

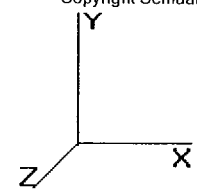
R: 1.50

Seg Top Elev (ft)	Description	Wz (lb)	a	b	c	Lateral Fs (lb)
0.00		0.00	0.00	0.00	0.00	0.00
5.00		1222.93	0.00	0.03	0.02	90.90
10.00		1197.00	0.01	0.05	0.03	113.66
15.00		1171.08	0.01	0.06	0.03	125.30
20.00		1145.16	0.02	0.07	0.04	134.36
25.00		1119.24	0.04	0.08	0.04	145.63
30.00		1093.32	0.05	0.10	0.05	162.30
35.00		1067.39	0.07	0.12	0.05	186.47
40.00		1041.47	0.09	0.14	0.05	218.93
42.96	Bot - Section 2	603.64	0.11	0.16	0.05	142.28
45.00		771.70	0.12	0.18	0.05	196.90
46.50	Appertunance(s)	571.35	0.13	0.19	0.05	154.44
49.04	Top - Section 1	940.64	0.14	0.21	0.05	279.87
50.00		164.32	0.15	0.22	0.05	50.65
55.00		842.49	0.18	0.27	0.06	309.36
60.00		820.27	0.21	0.33	0.06	351.82
65.00		798.05	0.25	0.40	0.07	391.27
70.00		775.83	0.29	0.47	0.08	425.59
75.00		753.61	0.33	0.55	0.09	453.28
80.00		731.39	0.37	0.62	0.10	473.43
85.00		709.17	0.42	0.70	0.11	485.52
87.54	Bot - Section 3	351.74	0.45	0.73	0.12	246.21
90.00		620.28	0.47	0.77	0.13	441.85
92.46	Top - Section 2	609.55	0.50	0.80	0.13	440.18
95.00		285.37	0.53	0.82	0.14	208.17
100.0		547.03	0.58	0.87	0.15	402.17
105.0		528.52	0.64	0.90	0.17	385.13
110.0		510.00	0.71	0.92	0.18	361.86
114.5	Appertunance(s)	463.17	0.76	0.91	0.19	315.52
115.0		48.32	0.77	0.91	0.19	32.73
120.0		472.97	0.84	0.88	0.21	299.28
125.0	Appertunance(s)	4272.45	0.91	0.83	0.23	2463.79
130.0		435.94	0.99	0.77	0.24	222.93
132.1	Bot - Section 4	179.23	1.02	0.74	0.25	86.35
134.0	Appertunance(s)	271.81	1.05	0.71	0.26	123.66
135.0		132.22	1.06	0.69	0.27	58.25
135.8	Top - Section 3	114.04	1.08	0.68	0.27	48.82
140.0		201.09	1.14	0.61	0.29	74.32
142.0	Appertunance(s)	912.65	1.18	0.58	0.31	312.68
145.0		138.65	1.23	0.53	0.33	42.31
150.0		222.19	1.31	0.47	0.37	56.69
155.0		211.08	1.40	0.45	0.43	48.00
160.0		199.97	1.49	0.50	0.51	45.82
165.0		188.86	1.59	0.63	0.61	50.17
170.0		177.75	1.69	0.89	0.75	60.52
174.0	Appertunance(s)	2452.20	1.77	1.22	0.88	1052.27
175.0		32.44	1.79	1.33	0.92	14.77
180.0	Appertunance(s)	2473.53	1.89	1.98	1.14	1509.80

Pole : 302506
Location : Winchester CT 3, CT
Height : 180.0 (ft)
Shape : 18 Sides
Base Dia : 52.75 (in)
Top Dia : 15.00 (in)
Taper : 0.219444 (in/ft)

Code: ANSI/TIA-222 Rev G
Struct Class : II
Exposure Category : B
Topographic Category : 1

Base Elev : 0.000 (ft)



Load Case: 1.2D + 1.0E	Dead Load with Seismic	28 Iterations
Gust Response Factor : 1.10	Sds : 0.49	Ss : 0.33
Dead Load Factor : 1.20	Seismic Load Factor : 1.00	Sd1 : 0.02
Wind Load Factor : 0.00	Structure Frequency : 0.2641	SA : 0.01
		Seismic Importance Factor : 1.00

Totals: 34,593.08 14,296.22 Total Wind : 26,852.6

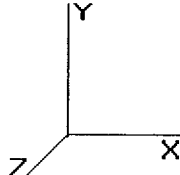
Seismic Base Shear Is Greater Than 50% Of Wind Force - Analysis Required

Pole : 302506
 Location : Winchester CT 3, CT
 Height : 180.0 (ft)
 Shape : 18 Sides
 Base Dia : 52.75 (in)
 Top Dia : 15.00 (in)
 Taper : 0.219444 (in/ft)

Code: ANSI/TIA-222 Rev G
 Struct Class : II
 Exposure Category : B
 Topographic Category : 1

Base Elev : 0.000 (ft)

Copyright Semaan Engineering Solutions, Inc
 8/26/2008 4:34:31 PM
 Page: 24



Load Case: 1.2D + 1.0E	Dead Load with Seismic	28 Iterations
Gust Response Factor : 1.10	Sds : 0.49	Ss : 0.33
Dead Load Factor : 1.20	Seismic Load Factor : 1.00	S1 : 0.01
Wind Load Factor : 0.00	Structure Frequency : 0.2641	SA : 0.01
		Seismic Importance Factor : 1.00

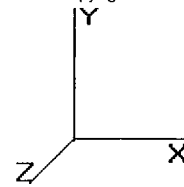
Calculated Forces

Seg Elev (ft)	Pu FY (-) (kips)	Vu FX (-) (kips)	Tu MY (ft-kips)	Mu MZ (ft-kips)	Mu MX (ft-kips)	Resultant Moment (ft-kips)	phi Pn (kips)	phi Vn (kips)	phi Tn (ft-kips)	phi Mn (ft-kips)	Total Deflect (in)	Rotation (deg)	Ratio
0.00	-50.83	-14.34	0.00	-1,626.31	0.00	1,626.31	4,249.43	2,124.71	9,129.72	4,571.64	0.00	0.00	0.368
5.00	-49.05	-14.32	0.00	-1,554.63	0.00	1,554.63	4,160.30	2,080.15	8,749.20	4,381.10	0.05	-0.09	0.367
10.00	-47.29	-14.28	0.00	-1,483.03	0.00	1,483.03	4,071.17	2,035.59	8,376.78	4,194.62	0.19	-0.18	0.365
15.00	-45.57	-14.22	0.00	-1,411.63	0.00	1,411.63	3,982.04	1,991.02	8,012.46	4,012.19	0.43	-0.27	0.363
20.00	-43.88	-14.15	0.00	-1,340.51	0.00	1,340.51	3,892.91	1,946.46	7,656.24	3,833.81	0.77	-0.37	0.361
25.00	-42.22	-14.07	0.00	-1,269.75	0.00	1,269.75	3,803.78	1,901.89	7,308.13	3,659.49	1.21	-0.47	0.358
30.00	-40.59	-13.96	0.00	-1,199.42	0.00	1,199.42	3,714.66	1,857.33	6,968.11	3,489.23	1.75	-0.56	0.355
35.00	-38.99	-13.82	0.00	-1,129.63	0.00	1,129.63	3,625.53	1,812.76	6,636.19	3,323.03	2.39	-0.66	0.351
40.00	-37.43	-13.64	0.00	-1,060.51	0.00	1,060.51	3,536.40	1,768.20	6,312.37	3,160.88	3.14	-0.76	0.346
42.96	-36.52	-13.52	0.00	-1,020.19	0.00	1,020.19	3,483.69	1,741.85	6,124.70	3,066.90	3.63	-0.82	0.343
45.00	-35.47	-13.33	0.00	-992.58	0.00	992.58	3,447.27	1,723.63	5,996.65	3,002.78	3.99	-0.86	0.341
46.50	-34.69	-13.19	0.00	-972.59	0.00	972.59	3,420.53	1,710.26	5,903.51	2,956.14	4.27	-0.90	0.339
49.04	-33.41	-12.91	0.00	-939.10	0.00	939.10	2,949.65	1,474.82	5,129.47	2,568.55	4.76	-0.95	0.377
50.00	-33.14	-12.89	0.00	-926.71	0.00	926.71	2,934.98	1,467.49	5,078.35	2,542.95	4.95	-0.97	0.376
55.00	-31.81	-12.62	0.00	-862.26	0.00	862.26	2,858.58	1,429.29	4,816.28	2,411.72	6.03	-1.08	0.369
60.00	-30.52	-12.30	0.00	-799.16	0.00	799.16	2,782.18	1,391.09	4,561.15	2,283.97	7.22	-1.20	0.361
65.00	-29.25	-11.94	0.00	-737.65	0.00	737.65	2,705.79	1,352.89	4,312.97	2,159.69	8.54	-1.31	0.352
70.00	-28.01	-11.54	0.00	-677.93	0.00	677.93	2,629.39	1,314.70	4,071.73	2,038.89	9.97	-1.42	0.343
75.00	-26.81	-11.11	0.00	-620.21	0.00	620.21	2,552.99	1,276.50	3,837.43	1,921.57	11.52	-1.54	0.333
80.00	-25.63	-10.66	0.00	-564.64	0.00	564.64	2,476.60	1,238.30	3,610.07	1,807.72	13.19	-1.65	0.323
85.00	-24.48	-10.18	0.00	-511.35	0.00	511.35	2,400.20	1,200.10	3,389.66	1,697.35	14.98	-1.76	0.312
87.54	-23.91	-9.94	0.00	-485.51	0.00	485.51	2,361.39	1,180.70	3,280.36	1,642.62	15.94	-1.82	0.306
90.00	-23.02	-9.49	0.00	-461.07	0.00	461.07	2,323.81	1,161.90	3,176.19	1,590.46	16.89	-1.88	0.300
92.46	-22.15	-9.04	0.00	-437.76	0.00	437.76	1,945.12	972.56	2,675.48	1,339.73	17.87	-1.94	0.338
95.00	-21.65	-8.85	0.00	-414.77	0.00	414.77	1,912.73	956.37	2,586.73	1,295.29	18.92	-1.99	0.332
100.00	-20.70	-8.46	0.00	-370.52	0.00	370.52	1,849.07	924.53	2,416.62	1,210.11	21.07	-2.12	0.317
105.00	-19.77	-8.08	0.00	-328.22	0.00	328.22	1,785.40	892.70	2,252.30	1,127.82	23.36	-2.24	0.302
110.00	-18.86	-7.72	0.00	-287.82	0.00	287.82	1,721.74	860.87	2,093.76	1,048.44	25.77	-2.36	0.286
114.50	-16.07	-7.30	0.00	-253.08	0.00	253.08	1,664.44	832.22	1,956.02	979.46	28.04	-2.47	0.268
115.00	-15.99	-7.28	0.00	-249.43	0.00	249.43	1,658.08	829.04	1,941.01	971.95	28.30	-2.48	0.266
120.00	-15.17	-6.98	0.00	-213.01	0.00	213.01	1,594.41	797.21	1,794.04	898.35	30.96	-2.59	0.247
125.00	-12.43	-4.41	0.00	-178.12	0.00	178.12	1,530.75	765.37	1,652.86	827.66	33.73	-2.70	0.223
130.00	-11.72	-4.17	0.00	-156.08	0.00	156.08	1,467.09	733.54	1,517.46	759.86	36.61	-2.80	0.213
132.12	-11.42	-4.07	0.00	-147.24	0.00	147.24	1,440.09	720.05	1,461.80	731.99	37.86	-2.85	0.209
134.00	-8.57	-3.81	0.00	-139.58	0.00	139.58	1,416.15	708.08	1,413.31	707.70	38.99	-2.89	0.203
135.00	-8.38	-3.75	0.00	-135.77	0.00	135.77	1,403.42	701.71	1,387.85	694.96	39.60	-2.91	0.201
135.87	-8.22	-3.70	0.00	-132.51	0.00	132.51	852.81	426.41	858.59	429.94	40.13	-2.93	0.318
140.00	-7.86	-3.62	0.00	-117.24	0.00	117.24	821.26	410.63	796.00	398.59	42.70	-3.01	0.304
142.00	-7.28	-3.28	0.00	-110.01	0.00	110.01	805.98	402.99	766.55	383.84	43.97	-3.08	0.296
145.00	-7.04	-3.24	0.00	-100.16	0.00	100.16	783.06	391.53	723.40	362.24	45.94	-3.17	0.286
150.00	-6.64	-3.18	0.00	-83.95	0.00	83.95	744.87	372.43	654.27	327.62	49.34	-3.33	0.265
155.00	-6.26	-3.13	0.00	-68.05	0.00	68.05	706.67	353.33	588.61	294.74	52.90	-3.47	0.240
160.00	-5.89	-3.07	0.00	-52.42	0.00	52.42	668.47	334.23	526.42	263.60	56.61	-3.61	0.208
165.00	-5.54	-3.01	0.00	-37.07	0.00	37.07	630.27	315.14	467.70	234.20	60.45	-3.73	0.167
170.00	-5.20	-2.93	0.00	-22.02	0.00	22.02	592.07	296.04	412.46	206.53	64.41	-3.82	0.116
174.00	-2.98	-1.73	0.00	-10.29	0.00	10.29	561.51	280.76	370.76	185.65	67.63	-3.87	0.061
175.00	-2.92	-1.71	0.00	-8.56	0.00	8.56	553.87	276.94	360.68	180.61	68.45	-3.88	0.053
180.00	0.00	-1.51	0.00	0.00	0.00	0.00	515.68	257.84	312.38	156.42	72.52	-3.90	0.000

Pole : 302506
 Location : Winchester CT 3, CT
 Height : 180.0 (ft)
 Shape : 18 Sides
 Base Dia : 52.75 (in)
 Top Dia : 15.00 (in)
 Taper : 0.219444 (in/ft)

Code: ANSI/TIA-222 Rev G
 Struct Class : II
 Exposure Category : B
 Topographic Category : 1

Base Elev : 0.000 (ft)



Load Case: 0.9D + 1.0E	Dead Load with Seismic (Reduced DL)	28 Iterations
Gust Response Factor : 1.10	Sds : 0.49	Ss : 0.33
Dead Load Factor : 0.90	Seismic Load Factor : 1.00	Sd1 : 0.02
Wind Load Factor : 0.00	Structure Frequency : 0.2641	SA : 0.01
		Seismic Importance Factor : 1.00

Total Segment Forces (Factored)

R : 1.50

Seg Top Elev (ft)	Description	Wz (lb)	a	b	c	Lateral Fs (lb)
0.00		0.00	0.00	0.00	0.00	0.00
5.00		1222.93	0.00	0.03	0.02	90.90
10.00		1197.00	0.01	0.05	0.03	113.66
15.00		1171.08	0.01	0.06	0.03	125.30
20.00		1145.16	0.02	0.07	0.04	134.36
25.00		1119.24	0.04	0.08	0.04	145.63
30.00		1093.32	0.05	0.10	0.05	162.30
35.00		1067.39	0.07	0.12	0.05	186.47
40.00		1041.47	0.09	0.14	0.05	218.93
42.96	Bot - Section 2	603.64	0.11	0.16	0.05	142.28
45.00		771.70	0.12	0.18	0.05	196.90
46.50	Appertunance(s)	571.35	0.13	0.19	0.05	154.44
49.04	Top - Section 1	940.64	0.14	0.21	0.05	279.87
50.00		164.32	0.15	0.22	0.05	50.65
55.00		842.49	0.18	0.27	0.06	309.36
60.00		820.27	0.21	0.33	0.06	351.82
65.00		798.05	0.25	0.40	0.07	391.27
70.00		775.83	0.29	0.47	0.08	425.59
75.00		753.61	0.33	0.55	0.09	453.28
80.00		731.39	0.37	0.62	0.10	473.43
85.00		709.17	0.42	0.70	0.11	485.52
87.54	Bot - Section 3	351.74	0.45	0.73	0.12	246.21
90.00		620.28	0.47	0.77	0.13	441.85
92.46	Top - Section 2	609.55	0.50	0.80	0.13	440.18
95.00		285.37	0.53	0.82	0.14	208.17
100.0		547.03	0.58	0.87	0.15	402.17
105.0		528.52	0.64	0.90	0.17	385.13
110.0		510.00	0.71	0.92	0.18	361.86
114.5	Appertunance(s)	463.17	0.76	0.91	0.19	315.52
115.0		48.32	0.77	0.91	0.19	32.73
120.0		472.97	0.84	0.88	0.21	299.28
125.0	Appertunance(s)	4272.45	0.91	0.83	0.23	2463.79
130.0		435.94	0.99	0.77	0.24	222.93
132.1	Bot - Section 4	179.23	1.02	0.74	0.25	86.35
134.0	Appertunance(s)	271.81	1.05	0.71	0.26	123.66
135.0		132.22	1.06	0.69	0.27	58.25
135.8	Top - Section 3	114.04	1.08	0.68	0.27	48.82
140.0		201.09	1.14	0.61	0.29	74.32
142.0	Appertunance(s)	912.65	1.18	0.58	0.31	312.68
145.0		138.65	1.23	0.53	0.33	42.31
150.0		222.19	1.31	0.47	0.37	56.69
155.0		211.08	1.40	0.45	0.43	48.00
160.0		199.97	1.49	0.50	0.51	45.82
165.0		188.86	1.59	0.63	0.61	50.17
170.0		177.75	1.69	0.89	0.75	60.52
174.0	Appertunance(s)	2452.20	1.77	1.22	0.88	1052.27
175.0		32.44	1.79	1.33	0.92	14.77
180.0	Appertunance(s)	2473.53	1.89	1.98	1.14	1509.80

Pole : 302506
Location : Winchester CT 3, CT
Height : 180.0 (ft)
Shape : 18 Sides
Base Dia : 52.75 (in)
Top Dia : 15.00 (in)
Taper : 0.219444 (in/ft)

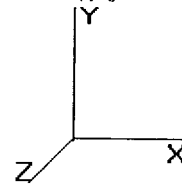
Code: ANSI/TIA-222 Rev G
Struct Class : II
Exposure Category : B
Topographic Category : 1

Base Elev : 0.000 (ft)

Copyright Semaan Engineering Solutions, Inc

8/26/2008 4:34:32 PM

Page: 26



Load Case: 0.9D + 1.0E

Dead Load with Seismic (Reduced DL)

28 Iterations

Gust Response Factor : 1.10

Sds : 0.49

Ss : 0.33

Dead Load Factor : 0.90

Seismic Load Factor : 1.00

Sd1 : 0.02

S1 : 0.01

Wind Load Factor : 0.00

Structure Frequency : 0.2641

SA : 0.01

Seismic Importance Factor : 1.00

Totals: 34,593.08

14,296.22

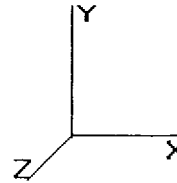
Total Wind : 26,852.6

Seismic Base Shear Is Greater Than 50% Of Wind Force - Analysis Required

Pole : 302506
 Location : Winchester CT 3, CT
 Height : 180.0 (ft)
 Shape : 18 Sides
 Base Dia : 52.75 (in)
 Top Dia : 15.00 (in)
 Taper : 0.219444 (in/ft)

Code: ANSI/TIA-222 Rev G
 Struct Class : II
 Exposure Category : B
 Topographic Category : 1

Base Elev : 0.000 (ft)



Load Case: 0.9D + 1.0E

Dead Load with Seismic (Reduced DL)

28 Iterations

Gust Response Factor : 1.10
 Dead Load Factor : 0.90
 Wind Load Factor : 0.00

Seismic Load Factor : 1.00
 Structure Frequency : 0.2641

Sds : 0.49
 Sd1 : 0.02
 SA : 0.01

Ss : 0.33
 S1 : 0.01
 Seismic Importance Factor : 1.00

Calculated Forces

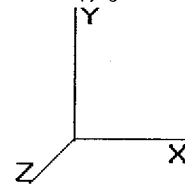
Seg Elev (ft)	Pu FY (-) (kips)	Vu FX (-) (kips)	Tu MY (ft-kips)	Mu MZ (ft-kips)	Mu MX (ft-kips)	Resultant Moment (ft-kips)	phi Pn (kips)	phi Vn (kips)	phi Tn (ft-kips)	phi Mn (ft-kips)	Total Deflect (in)	Rotation (deg)	Ratio
0.00	-38.12	-14.33	0.00	-1,601.16	0.00	1,601.16	4,249.43	2,124.71	9,129.72	4,571.64	0.00	0.00	0.359
5.00	-36.78	-14.29	0.00	-1,529.53	0.00	1,529.53	4,160.30	2,080.15	8,749.20	4,381.10	0.05	-0.09	0.358
10.00	-35.46	-14.23	0.00	-1,458.07	0.00	1,458.07	4,071.17	2,035.59	8,376.78	4,194.62	0.19	-0.18	0.356
15.00	-34.16	-14.16	0.00	-1,386.92	0.00	1,386.92	3,982.04	1,991.02	8,012.46	4,012.19	0.43	-0.27	0.354
20.00	-32.89	-14.07	0.00	-1,316.14	0.00	1,316.14	3,892.91	1,946.46	7,656.24	3,833.81	0.76	-0.36	0.352
25.00	-31.64	-13.97	0.00	-1,245.80	0.00	1,245.80	3,803.78	1,901.89	7,308.13	3,659.49	1.19	-0.46	0.349
30.00	-30.41	-13.84	0.00	-1,175.97	0.00	1,175.97	3,714.66	1,857.33	6,968.11	3,489.23	1.72	-0.55	0.345
35.00	-29.20	-13.70	0.00	-1,106.75	0.00	1,106.75	3,625.53	1,812.76	6,636.19	3,323.03	2.35	-0.65	0.341
40.00	-28.03	-13.50	0.00	-1,038.28	0.00	1,038.28	3,536.40	1,768.20	6,312.37	3,160.88	3.09	-0.75	0.336
42.96	-27.35	-13.37	0.00	-998.37	0.00	998.37	3,483.69	1,741.85	6,124.70	3,066.90	3.57	-0.81	0.333
45.00	-26.56	-13.18	0.00	-971.04	0.00	971.04	3,447.27	1,723.63	5,996.65	3,002.78	3.92	-0.85	0.331
46.50	-25.97	-13.04	0.00	-951.27	0.00	951.27	3,420.53	1,710.26	5,903.51	2,956.14	4.19	-0.88	0.329
49.04	-25.01	-12.76	0.00	-918.16	0.00	918.16	2,949.65	1,474.82	5,129.47	2,568.55	4.68	-0.93	0.366
50.00	-24.80	-12.73	0.00	-905.91	0.00	905.91	2,934.98	1,467.49	5,078.35	2,542.95	4.87	-0.95	0.365
55.00	-23.81	-12.45	0.00	-842.25	0.00	842.25	2,858.58	1,429.29	4,816.28	2,411.72	5.92	-1.06	0.358
60.00	-22.83	-12.13	0.00	-780.00	0.00	780.00	2,782.18	1,391.09	4,561.15	2,283.97	7.09	-1.17	0.350
65.00	-21.88	-11.76	0.00	-719.37	0.00	719.37	2,705.79	1,352.89	4,312.97	2,159.69	8.38	-1.28	0.341
70.00	-20.95	-11.35	0.00	-660.59	0.00	660.59	2,629.39	1,314.70	4,071.73	2,038.89	9.78	-1.39	0.332
75.00	-20.04	-10.91	0.00	-603.84	0.00	603.84	2,552.99	1,276.50	3,837.43	1,921.57	11.30	-1.51	0.322
80.00	-19.15	-10.45	0.00	-549.28	0.00	549.28	2,476.60	1,238.30	3,610.07	1,807.72	12.94	-1.62	0.312
85.00	-18.29	-9.97	0.00	-497.01	0.00	497.01	2,400.20	1,200.10	3,389.66	1,697.35	14.69	-1.73	0.301
87.54	-17.86	-9.73	0.00	-471.69	0.00	471.69	2,361.39	1,180.70	3,280.36	1,642.62	15.62	-1.78	0.295
90.00	-17.20	-9.28	0.00	-447.76	0.00	447.76	2,323.81	1,161.90	3,176.19	1,590.46	16.56	-1.84	0.289
92.46	-16.55	-8.84	0.00	-424.97	0.00	424.97	1,945.12	972.56	2,675.48	1,339.73	17.52	-1.89	0.326
95.00	-16.18	-8.64	0.00	-402.49	0.00	402.49	1,912.73	956.37	2,586.73	1,295.29	18.54	-1.95	0.319
100.00	-15.46	-8.25	0.00	-359.29	0.00	359.29	1,849.07	924.53	2,416.62	1,210.11	20.64	-2.07	0.305
105.00	-14.76	-7.87	0.00	-318.07	0.00	318.07	1,785.40	892.70	2,252.30	1,127.82	22.88	-2.19	0.290
110.00	-14.08	-7.50	0.00	-278.74	0.00	278.74	1,721.74	860.87	2,093.76	1,048.44	25.23	-2.30	0.274
114.50	-11.99	-7.11	0.00	-244.98	0.00	244.98	1,664.44	832.22	1,956.02	979.46	27.45	-2.41	0.257
115.00	-11.92	-7.09	0.00	-241.42	0.00	241.42	1,658.08	829.04	1,941.01	971.95	27.70	-2.42	0.256
120.00	-11.31	-6.79	0.00	-205.96	0.00	205.96	1,594.41	797.21	1,794.04	898.35	30.29	-2.53	0.236
125.00	-9.28	-4.25	0.00	-172.03	0.00	172.03	1,530.75	765.37	1,652.86	827.66	33.00	-2.63	0.214
130.00	-8.75	-4.01	0.00	-150.80	0.00	150.80	1,467.09	733.54	1,517.46	759.86	35.80	-2.73	0.204
132.12	-8.53	-3.92	0.00	-142.30	0.00	142.30	1,440.09	720.05	1,461.80	731.99	37.02	-2.77	0.200
134.00	-6.39	-3.69	0.00	-134.93	0.00	134.93	1,416.15	708.08	1,413.31	707.70	38.12	-2.81	0.195
135.00	-6.25	-3.63	0.00	-131.24	0.00	131.24	1,403.42	701.71	1,387.85	694.96	38.72	-2.83	0.193
135.87	-6.13	-3.58	0.00	-128.08	0.00	128.08	852.81	426.41	858.59	429.94	39.23	-2.85	0.305
140.00	-5.85	-3.50	0.00	-113.29	0.00	113.29	821.26	410.63	796.00	398.59	41.74	-2.93	0.291
142.00	-5.43	-3.17	0.00	-106.29	0.00	106.29	805.98	402.99	766.55	383.84	42.98	-3.00	0.284
145.00	-5.24	-3.13	0.00	-96.78	0.00	96.78	783.06	391.53	723.40	362.24	44.89	-3.09	0.274
150.00	-4.94	-3.07	0.00	-81.12	0.00	81.12	744.87	372.43	654.27	327.62	48.20	-3.24	0.254
155.00	-4.66	-3.02	0.00	-65.76	0.00	65.76	706.67	353.33	588.61	294.74	51.67	-3.38	0.230
160.00	-4.38	-2.97	0.00	-50.66	0.00	50.66	668.47	334.23	526.42	263.60	55.28	-3.51	0.199
165.00	-4.11	-2.91	0.00	-35.83	0.00	35.83	630.27	315.14	467.70	234.20	59.02	-3.63	0.160
170.00	-3.86	-2.84	0.00	-21.30	0.00	21.30	592.07	296.04	412.46	206.53	62.87	-3.72	0.110
174.00	-2.21	-1.67	0.00	-9.96	0.00	9.96	561.51	280.76	370.76	185.65	66.00	-3.77	0.058
175.00	-2.17	-1.66	0.00	-8.28	0.00	8.28	553.87	276.94	360.68	180.61	66.79	-3.77	0.050
180.00	0.00	-1.51	0.00	0.00	0.00	0.00	515.68	257.84	312.38	156.42	70.75	-3.79	0.000

Pole : 302506
 Location : Winchester CT 3, CT
 Height : 180.0 (ft)
 Shape : 18 Sides
 Base Dia : 52.75 (in)
 Top Dia : 15.00 (in)
 Taper : 0.219444 (in/ft)

Code: ANSI/TIA-222 Rev G
 Struct Class : II
 Exposure Category : B
 Topographic Category : 1

Base Elev : 0.000 (ft)

Copyright Semaan Engineering Solutions, Inc
 8/26/2008 4:34:32 PM
 Page: 28



Load Case: 1.0D + 1.0W	60.00 mph Serviceability	27 Iterations
Gust Response Factor : 1.10		Wind Importance Factor : 1.00
Dead Load Factor : 1.00		
Wind Load Factor : 1.00		

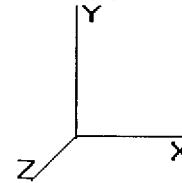
Shaft Segment Forces (Factored)

Seg Top Elev (ft)	Description	Kzt	Kz	qz (psf)	qzGh (psf)	C (mph-ft)	Cf	Ice Thick (in)	Tributary (ft)	Aa (sf)	CfAa (sf)	Wind Force X (lb)	Dead Load Ice (lb)	Tot Dead Load (lb)	
0.00		1.00	0.70	6.129	6.742	224.07	0.650	0.00	0.00	0.000	0.00	0.0	0.0	0.0	
5.00		1.00	0.70	6.129	6.742	219.41	0.650	*	0.00	5.00	22.086	14.36	96.8	0.0	1,222.9
10.00		1.00	0.70	6.129	6.742	214.75	0.650	*	0.00	5.00	21.622	14.05	94.7	0.0	1,197.0
15.00		1.00	0.70	6.129	6.742	210.09	0.650	*	0.00	5.00	21.158	13.75	92.7	0.0	1,171.1
20.00		1.00	0.70	6.129	6.742	205.43	0.650	*	0.00	5.00	20.693	13.45	90.7	0.0	1,145.2
25.00		1.00	0.70	6.129	6.742	200.76	0.650	*	0.00	5.00	20.229	13.15	88.6	0.0	1,119.2
30.00		1.00	0.70	6.134	6.747	196.19	0.650	*	0.00	5.00	19.765	12.85	86.7	0.0	1,093.3
35.00		1.00	0.73	6.410	7.051	195.79	0.650	*	0.00	5.00	19.301	12.55	88.5	0.0	1,067.4
40.00		1.00	0.76	6.659	7.325	194.70	0.650	*	0.00	5.00	18.837	12.24	89.7	0.0	1,041.5
42.96	Bot - Section 2	1.00	0.77	6.796	7.476	193.79	0.650	*	0.00	2.96	10.920	7.10	53.1	0.0	603.6
45.00		1.00	0.78	6.887	7.576	193.06	0.650	*	0.00	2.04	7.582	4.93	37.3	0.0	771.7
46.50	Appertunance(s)	1.00	0.79	6.952	7.647	192.48	0.650	*	0.00	1.50	5.516	3.59	27.4	0.0	561.4
49.04	Top - Section 1	1.00	0.80	7.058	7.764	191.41	0.650	*	0.00	2.54	9.245	6.01	46.7	0.0	940.6
50.00		1.00	0.81	7.098	7.807	194.40	0.650	*	0.00	0.96	3.464	2.25	17.6	0.0	164.3
55.00		1.00	0.83	7.294	8.023	191.99	0.650	*	0.00	5.00	17.761	11.54	92.6	0.0	842.5
60.00		1.00	0.85	7.477	8.225	189.24	0.650	*	0.00	5.00	17.297	11.24	92.5	0.0	820.3
65.00		1.00	0.87	7.650	8.415	186.21	0.650	*	0.00	5.00	16.833	10.94	92.1	0.0	798.0
70.00		1.00	0.89	7.814	8.595	182.93	0.650	*	0.00	5.00	16.368	10.64	91.4	0.0	775.8
75.00		1.00	0.91	7.969	8.766	179.42	0.650	*	0.00	5.00	15.904	10.34	90.6	0.0	753.6
80.00		1.00	0.92	8.118	8.930	175.72	0.650	*	0.00	5.00	15.440	10.04	89.6	0.0	731.4
85.00		1.00	0.94	8.260	9.086	171.84	0.650	*	0.00	5.00	14.976	9.73	88.4	0.0	709.2
87.54	Bot - Section 3	1.00	0.95	8.329	9.162	169.80	1.200	*	0.00	2.54	7.430	8.92	81.7	0.0	351.7
90.00		1.00	0.95	8.396	9.235	167.79	1.200	*	0.00	2.46	7.212	8.65	79.9	0.0	620.3
92.46	Top - Section 2	1.00	0.96	8.460	9.306	165.75	1.200	*	0.00	2.46	7.090	8.51	79.2	0.0	609.5
95.00		1.00	0.97	8.526	9.379	166.73	1.200	*	0.00	2.54	7.222	8.67	81.3	0.0	285.4
100.00		1.00	0.98	8.652	9.517	162.42	1.200	*	0.00	5.00	13.848	16.62	158.2	0.0	547.0
105.00		1.00	1.00	8.774	9.651	157.98	1.200	*	0.00	5.00	13.383	16.06	155.0	0.0	528.5
110.00		1.00	1.01	8.891	9.780	153.42	1.200	*	0.00	5.00	12.919	15.50	151.6	0.0	510.0
114.50	Appertunance(s)	1.00	1.02	8.993	9.893	149.22	1.200	*	0.00	4.50	11.230	13.48	133.3	0.0	443.2
115.00		1.00	1.02	9.005	9.905	148.74	0.650	*	0.00	0.50	1.225	0.80	7.9	0.0	48.3
120.00		1.00	1.04	9.115	10.02	143.97	0.650	*	0.00	5.00	11.991	7.79	78.1	0.0	473.0
125.00	Appertunance(s)	1.00	1.05	9.222	10.14	139.09	0.650	*	0.00	5.00	11.526	7.49	76.0	0.0	454.5
130.00		1.00	1.06	9.326	10.25	134.12	0.650		0.00	5.00	11.062	7.19	73.8	0.0	435.9
132.10	Bot - Section 4	1.00	1.07	9.369	10.30	131.99	0.650		0.00	2.12	4.550	2.96	30.5	0.0	179.2
134.00	Appertunance(s)	1.00	1.07	9.407	10.34	130.09	0.650		0.00	1.88	4.025	2.62	27.1	0.0	251.8
135.00		1.00	1.07	9.427	10.36	129.07	0.650		0.00	1.00	2.114	1.37	14.2	0.0	132.2
135.80	Top - Section 3	1.00	1.07	9.444	10.38	128.18	0.650		0.00	0.87	1.824	1.19	12.3	0.0	114.0
140.00		1.00	1.08	9.525	10.47	125.92	0.650		0.00	4.13	8.469	5.50	57.7	0.0	201.1
142.00	Appertunance(s)	1.00	1.09	9.564	10.52	123.84	0.650		0.00	2.00	3.987	2.59	27.3	0.0	94.7
145.00		1.00	1.09	9.621	10.58	120.71	0.650		0.00	3.00	5.841	3.80	40.2	0.0	138.6
150.00		1.00	1.11	9.715	10.68	115.43	0.650		0.00	5.00	9.364	6.09	65.0	0.0	222.2
155.00		1.00	1.12	9.806	10.78	110.07	0.650		0.00	5.00	8.900	5.78	62.4	0.0	211.1
160.00		1.00	1.13	9.896	10.88	104.65	0.650		0.00	5.00	8.435	5.48	59.7	0.0	200.0
165.00		1.00	1.14	9.983	10.98	99.168	0.650		0.00	5.00	7.971	5.18	56.9	0.0	188.9
170.00		1.00	1.15	10.069	11.07	93.618	0.650		0.00	5.00	7.507	4.88	54.0	0.0	177.8
174.00	Appertunance(s)	1.00	1.15	10.136	11.14	89.134	0.650		0.00	4.00	5.671	3.69	41.1	0.0	134.2
175.00		1.00	1.16	10.152	11.16	88.007	0.650		0.00	1.00	1.371	0.89	10.0	0.0	32.4
180.00	Appertunance(s)	1.00	1.16	10.234	11.25	82.339	0.650		0.00	5.00	6.579	4.28	48.1	0.0	155.5
* = Cf Adjusted By Linear Load Ra Effect															
						Totals:		540.00				57,015.3		0.0 78,340.4	

Pole : 302506
 Location : Winchester CT 3, CT
 Height : 180.0 (ft)
 Shape : 18 Sides
 Base Dia : 52.75 (in)
 Top Dia : 15.00 (in)
 Taper : 0.219444 (in/ft)

Code: ANSI/TIA-222 Rev G
 Struct Class : II
 Exposure Category : B
 Topographic Category : 1

Base Elev : 0.000 (ft)



Load Case: 1.0D + 1.0W

60.00 mph Serviceability

27 Iterations

Gust Response Factor : 1.10
 Dead Load Factor : 1.00
 Wind Load Factor : 1.00

Wind Importance Factor : 1.00

Discrete Appurtenance Segment Forces (Factored)

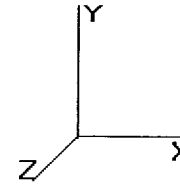
Elev (ft)	Description	Qty	qz (psf)	qzGh (psf)	CaAa Factor	Ka	Total CaAa (sf)	Horiz Ecc (ft)	Vert Ecc (ft)	Wind FX (lb)	Mom Y (lb-ft)	Mom Z (lb-ft)	Dead Load (lb)
46.50	Nokia CS72187.01	1	6.952	7.647	1.00	1.00	1.00	0.000	0.000	7.65	0.00	0.00	10.00
114.5	Round Low Profile PI	1	8.993	9.893	1.00	1.00	21.70	0.000	0.000	214.67	0.00	0.00	1,500.00
114.5	Decibel DB844H90E-	12	8.993	9.893	0.74	0.80	33.30	0.000	0.000	329.44	0.00	0.00	168.00
125.0	Round Low Profile PI	1	9.222	10.144	1.00	1.00	21.70	0.000	0.000	220.12	0.00	0.00	1,500.00
125.0	Antel LPA-80063/6CF	2	9.222	10.144	0.75	0.80	15.55	0.000	0.000	157.75	0.00	0.00	54.00
125.0	Antel LPA-80080/6CF	4	9.222	10.144	0.59	0.80	21.55	0.000	0.000	218.59	0.00	0.00	84.00
125.0	Decibel DB950F85E-M	4	9.222	10.144	0.66	0.80	11.26	0.000	0.000	114.24	0.00	0.00	46.00
125.0	Decibel DB950F65E-M	2	9.222	10.144	0.66	0.80	5.88	0.000	0.000	59.68	0.00	0.00	32.00
134.0	Flat Platform w/ Han	1	9.407	10.347	1.00	1.00	42.40	0.000	0.000	438.73	0.00	0.00	2,000.00
134.0	Andrew DB980H90E-M	9	9.407	10.347	0.59	0.75	20.80	0.000	0.000	215.19	0.00	0.00	76.50
142.0	Side Arms	2	9.564	10.520	1.00	1.00	10.40	0.000	0.000	109.41	0.00	0.00	300.00
142.0	56" Dipole	1	9.564	10.520	1.00	1.00	1.76	0.000	0.000	18.52	0.00	0.00	25.00
142.0	10' Omni	2	9.659	10.625	1.00	1.00	6.00	0.000	5.000	63.75	0.00	318.75	20.00
174.0	Flat Low Profile Pla	1	10.136	11.149	1.00	1.00	26.10	0.000	0.000	291.00	0.00	0.00	1,500.00
174.0	Antel LPD-7905/4	4	10.136	11.149	0.62	0.80	11.01	0.000	0.000	122.72	0.00	0.00	88.00
174.0	Nokia CS72993.07	4	10.136	11.149	0.54	0.80	3.06	0.000	0.000	34.16	0.00	0.00	70.40
174.0	Decibel	2	10.136	11.149	0.65	0.80	7.86	0.000	0.000	87.66	0.00	0.00	40.00
180.0	Yagi	1	10.234	11.258	1.00	1.00	3.00	0.000	0.000	33.77	0.00	0.00	10.00
180.0	10' Omni	1	10.315	11.346	1.00	1.00	3.00	0.000	5.000	34.04	0.00	170.19	10.00
180.0	CSS DUO4-8670	12	10.299	11.329	0.66	0.80	51.40	0.000	4.000	582.34	0.00	2,329.37	798.00
180.0	Flat Low Profile Pla	1	10.234	11.258	1.00	1.00	26.10	0.000	0.000	293.83	0.00	0.00	1,500.00
										3,647.26			30,478.89

Pole : 302506
 Location : Winchester CT 3, CT
 Height : 180.0 (ft)
 Shape : 18 Sides
 Base Dia : 52.75 (in)
 Top Dia : 15.00 (in)
 Taper : 0.219444 (in/ft)

Code: ANSI/TIA-222 Rev G
 Struct Class : II
 Exposure Category : B
 Topographic Category : 1

Base Elev : 0.000 (ft)

Copyright Semaan Engineering Solutions, Inc
 8/26/2008 4:34:33 PM
 Page: 30



Load Case: 1.0D + 1.0W 60.00 mph Serviceability 27 Iterations

Gust Response Factor : 1.10 Wind Importance Factor : 1.00

Dead Load Factor : 1.00

Wind Load Factor : 1.00

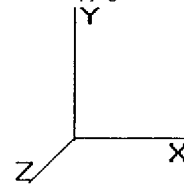
Linear Appurtenance Segment Forces (Factored)

Seg Top Elev (ft)	Description	Exposed To Wind	Length (ft)	Ca	Exposed Width (in)	Area (sqft)	CaAa (sqft)	qz (psf)	Ra	Cf Adjust Factor	FX (lb)	Dead Load (lb)
5.00	(12) 1 5/8" Coax	Yes	5.00	0.000	3.96	1.65	0.00	6.129	0.133	1.100	0.00	49.19
5.00	(12) 1 1/4" Coax	Yes	5.00	0.000	3.10	1.29	0.00	6.129	0.133	1.100	0.00	37.79
10.00	(12) 1 5/8" Coax	Yes	5.00	0.000	3.96	1.65	0.00	6.129	0.136	1.108	0.00	49.19
10.00	(12) 1 1/4" Coax	Yes	5.00	0.000	3.10	1.29	0.00	6.129	0.136	1.108	0.00	37.79
15.00	(12) 1 5/8" Coax	Yes	5.00	0.000	3.96	1.65	0.00	6.129	0.139	1.117	0.00	49.19
15.00	(12) 1 1/4" Coax	Yes	5.00	0.000	3.10	1.29	0.00	6.129	0.139	1.117	0.00	37.79
20.00	(12) 1 5/8" Coax	Yes	5.00	0.000	3.96	1.65	0.00	6.129	0.142	1.126	0.00	49.19
20.00	(12) 1 1/4" Coax	Yes	5.00	0.000	3.10	1.29	0.00	6.129	0.142	1.126	0.00	37.79
25.00	(12) 1 5/8" Coax	Yes	5.00	0.000	3.96	1.65	0.00	6.129	0.145	1.136	0.00	49.19
25.00	(12) 1 1/4" Coax	Yes	5.00	0.000	3.10	1.29	0.00	6.129	0.145	1.136	0.00	37.79
30.00	(12) 1 5/8" Coax	Yes	5.00	0.000	3.96	1.65	0.00	6.134	0.149	1.146	0.00	49.19
30.00	(12) 1 1/4" Coax	Yes	5.00	0.000	3.10	1.29	0.00	6.134	0.149	1.146	0.00	37.79
35.00	(12) 1 5/8" Coax	Yes	5.00	0.000	3.96	1.65	0.00	6.410	0.152	1.157	0.00	49.19
35.00	(12) 1 1/4" Coax	Yes	5.00	0.000	3.10	1.29	0.00	6.410	0.152	1.157	0.00	37.79
40.00	(12) 1 5/8" Coax	Yes	5.00	0.000	3.96	1.65	0.00	6.659	0.156	1.169	0.00	49.19
40.00	(12) 1 1/4" Coax	Yes	5.00	0.000	3.10	1.29	0.00	6.659	0.156	1.169	0.00	37.79
42.96	(12) 1 5/8" Coax	Yes	2.96	0.000	3.96	0.98	0.00	6.796	0.159	1.178	0.00	29.09
42.96	(12) 1 1/4" Coax	Yes	2.96	0.000	3.10	0.76	0.00	6.796	0.159	1.178	0.00	22.35
45.00	(12) 1 5/8" Coax	Yes	2.04	0.000	3.96	0.67	0.00	6.887	0.161	1.184	0.00	20.10
45.00	(12) 1 1/4" Coax	Yes	2.04	0.000	3.10	0.53	0.00	6.887	0.161	1.184	0.00	15.45
46.50	(12) 1 5/8" Coax	Yes	1.50	0.000	3.96	0.50	0.00	6.952	0.163	1.188	0.00	14.76
46.50	(12) 1 1/4" Coax	Yes	1.50	0.000	3.10	0.39	0.00	6.952	0.163	1.188	0.00	11.34
49.04	(12) 1 5/8" Coax	Yes	2.54	0.000	3.96	0.84	0.00	7.058	0.164	1.193	0.00	24.99
49.04	(12) 1 1/4" Coax	Yes	2.54	0.000	3.10	0.66	0.00	7.058	0.164	1.193	0.00	19.20
50.00	(12) 1 5/8" Coax	Yes	0.96	0.000	3.96	0.32	0.00	7.098	0.163	1.189	0.00	9.45
50.00	(12) 1 1/4" Coax	Yes	0.96	0.000	3.10	0.25	0.00	7.098	0.163	1.189	0.00	7.26
55.00	(12) 1 5/8" Coax	Yes	5.00	0.000	3.96	1.65	0.00	7.294	0.166	1.197	0.00	49.19
55.00	(12) 1 1/4" Coax	Yes	5.00	0.000	3.10	1.29	0.00	7.294	0.166	1.197	0.00	37.79
60.00	(12) 1 5/8" Coax	Yes	5.00	0.000	3.96	1.65	0.00	7.477	0.170	1.210	0.00	49.19
60.00	(12) 1 1/4" Coax	Yes	5.00	0.000	3.10	1.29	0.00	7.477	0.170	1.210	0.00	37.79
65.00	(12) 1 5/8" Coax	Yes	5.00	0.000	3.96	1.65	0.00	7.650	0.175	1.224	0.00	49.19
65.00	(12) 1 1/4" Coax	Yes	5.00	0.000	3.10	1.29	0.00	7.650	0.175	1.224	0.00	37.79
70.00	(12) 1 5/8" Coax	Yes	5.00	0.000	3.96	1.65	0.00	7.814	0.180	1.239	0.00	49.19
70.00	(12) 1 1/4" Coax	Yes	5.00	0.000	3.10	1.29	0.00	7.814	0.180	1.239	0.00	37.79
75.00	(12) 1 5/8" Coax	Yes	5.00	0.000	3.96	1.65	0.00	7.969	0.185	1.255	0.00	49.19
75.00	(12) 1 1/4" Coax	Yes	5.00	0.000	3.10	1.29	0.00	7.969	0.185	1.255	0.00	37.79
80.00	(12) 1 5/8" Coax	Yes	5.00	0.000	3.96	1.65	0.00	8.118	0.191	1.272	0.00	49.19
80.00	(12) 1 1/4" Coax	Yes	5.00	0.000	3.10	1.29	0.00	8.118	0.191	1.272	0.00	37.79
85.00	(12) 1 5/8" Coax	Yes	5.00	0.000	3.96	1.65	0.00	8.260	0.196	1.289	0.00	49.19
85.00	(12) 1 1/4" Coax	Yes	5.00	0.000	3.10	1.29	0.00	8.260	0.196	1.289	0.00	37.79
87.54	(12) 1 5/8" Coax	Yes	2.54	1.200	3.96	0.84	1.01	8.329	0.201	0.000	9.22	24.99
87.54	(12) 1 1/4" Coax	Yes	2.54	1.200	3.10	0.66	0.79	8.329	0.201	0.000	7.21	19.20
90.00	(12) 1 5/8" Coax	Yes	2.46	1.200	3.96	0.81	0.97	8.396	0.204	0.000	9.00	24.20
90.00	(12) 1 1/4" Coax	Yes	2.46	1.200	3.10	0.64	0.76	8.396	0.204	0.000	7.04	18.60
92.46	(12) 1 5/8" Coax	Yes	2.46	1.200	3.96	0.81	0.97	8.460	0.208	0.000	9.05	24.17
92.46	(12) 1 1/4" Coax	Yes	2.46	1.200	3.10	0.63	0.76	8.460	0.208	0.000	7.09	18.57
95.00	(12) 1 5/8" Coax	Yes	2.54	1.200	3.96	0.84	1.01	8.526	0.207	0.000	9.45	25.02
95.00	(12) 1 1/4" Coax	Yes	2.54	1.200	3.10	0.66	0.79	8.526	0.207	0.000	7.39	19.23
100.0	(12) 1 5/8" Coax	Yes	5.00	1.200	3.96	1.65	1.98	8.652	0.212	0.000	18.84	49.19
100.0	(12) 1 1/4" Coax	Yes	5.00	1.200	3.10	1.29	1.55	8.652	0.212	0.000	14.75	37.79
105.0	(12) 1 5/8" Coax	Yes	5.00	1.200	3.96	1.65	1.98	8.774	0.220	0.000	19.11	49.19

Pole : 302506
 Location : Winchester CT 3, CT
 Height : 180.0 (ft)
 Shape : 18 Sides
 Base Dia : 52.75 (in)
 Top Dia : 15.00 (in)
 Taper : 0.219444 (in/ft)

Code: ANSI/TIA-222 Rev G
 Struct Class : II
 Exposure Category : B
 Topographic Category : 1

Base Elev : 0.000 (ft)



Load Case: 1.0D + 1.0W	60.00 mph Serviceability	27 Iterations
Gust Response Factor : 1.10		Wind Importance Factor : 1.00
Dead Load Factor : 1.00		
Wind Load Factor : 1.00		

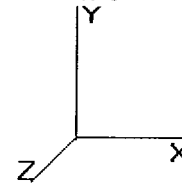
105.0	(12) 1 1/4" Coax	Yes	5.00	1.200	3.10	1.29	1.55	8.774	0.220	0.000	14.96	37.79
110.0	(12) 1 5/8" Coax	Yes	5.00	1.200	3.96	1.65	1.98	8.891	0.228	0.000	19.36	49.19
110.0	(12) 1 1/4" Coax	Yes	5.00	1.200	3.10	1.29	1.55	8.891	0.228	0.000	15.16	37.79
114.5	(12) 1 5/8" Coax	Yes	4.50	1.200	3.96	1.49	1.78	8.993	0.236	0.000	17.63	44.27
114.5	(12) 1 1/4" Coax	Yes	4.50	1.200	3.10	1.16	1.39	8.993	0.236	0.000	13.80	34.01
115.0	(12) 1 5/8" Coax	Yes	0.50	0.000	3.96	0.17	0.00	9.005	0.135	1.104	0.00	4.92
120.0	(12) 1 5/8" Coax	Yes	5.00	0.000	3.96	1.65	0.00	9.115	0.138	1.113	0.00	49.19
125.0	(12) 1 5/8" Coax	Yes	5.00	0.000	3.96	1.65	0.00	9.222	0.143	1.129	0.00	49.19
Totals:											199.07	6,495.53

Pole : 302506
 Location : Winchester CT 3, CT
 Height : 180.0 (ft)
 Shape : 18 Sides
 Base Dia : 52.75 (in)
 Top Dia : 15.00 (in)
 Taper : 0.219444 (in/ft)

Code: ANSI/TIA-222 Rev G
 Struct Class : II
 Exposure Category : B
 Topographic Category : 1

Base Elev : 0.000 (ft)

Copyright Semaan Engineering Solutions, Inc
 8/26/2008 4:34:33 PM
 Page : 32



Load Case: 1.0D + 1.0W	60.00 mph Serviceability	27 Iterations
Gust Response Factor : 1.10		Wind Importance Factor : 1.00
Dead Load Factor : 1.00		
Wind Load Factor : 1.00		

Applied Segment Forces Summary

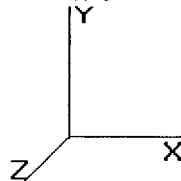
Seg Elev (ft)	Lateral FX (-) (lb)	Axial FY (-) (lb)	Torsion MY (lb-ft)	Moment MZ (lb-ft)
0.00	0.00	0.00	0.00	0.00
5.00	96.78	1,468.84	0.00	0.00
10.00	94.75	1,442.92	0.00	0.00
15.00	92.71	1,417.00	0.00	0.00
20.00	90.68	1,391.08	0.00	0.00
25.00	88.64	1,365.16	0.00	0.00
30.00	86.68	1,339.23	0.00	0.00
35.00	88.46	1,313.31	0.00	0.00
40.00	89.69	1,287.39	0.00	0.00
42.96	53.06	749.06	0.00	0.00
45.00	37.34	872.20	0.00	0.00
46.50	35.07	645.13	0.00	0.00
49.04	46.66	1,065.19	0.00	0.00
50.00	17.58	211.39	0.00	0.00
55.00	92.62	1,087.66	0.00	0.00
60.00	92.47	1,065.44	0.00	0.00
65.00	92.07	1,043.22	0.00	0.00
70.00	91.45	1,021.00	0.00	0.00
75.00	90.62	998.78	0.00	0.00
80.00	89.62	976.56	0.00	0.00
85.00	88.44	954.34	0.00	0.00
87.54	98.12	476.28	0.00	0.00
90.00	95.97	740.90	0.00	0.00
92.46	95.32	730.00	0.00	0.00
95.00	98.12	410.09	0.00	0.00
100.0	191.75	792.20	0.00	0.00
105.0	189.06	773.69	0.00	0.00
110.0	186.14	755.17	0.00	0.00
114.5	708.86	2,331.82	0.00	0.00
115.0	7.88	69.05	0.00	0.00
120.0	78.14	680.34	0.00	0.00
125.0	846.38	2,377.83	0.00	0.00
130.0	73.76	594.12	0.00	0.00
132.1	30.48	246.29	0.00	0.00
134.0	681.00	2,387.79	0.00	0.00
135.0	14.25	156.47	0.00	0.00
135.8	12.32	135.14	0.00	0.00
140.0	57.68	301.28	0.00	0.00
142.0	218.94	488.17	0.00	318.75
145.0	40.18	201.13	0.00	0.00
150.0	65.04	326.33	0.00	0.00
155.0	62.40	315.22	0.00	0.00
160.0	59.68	304.11	0.00	0.00
165.0	56.90	293.00	0.00	0.00
170.0	54.04	281.89	0.00	0.00
174.0	576.64	1,915.91	0.00	0.00
175.0	9.95	43.43	0.00	0.00
180.0	992.12	2,528.48	0.00	2,499.56
Totals:	35,748.97	131,350.1	0.00	2,818.31

Pole : 302506
 Location : Winchester CT 3, CT
 Height : 180.0 (ft)
 Shape : 18 Sides
 Base Dia : 52.75 (in)
 Top Dia : 15.00 (in)
 Taper : 0.219444 (in/ft)

Code: ANSI/TIA-222 Rev G
 Struct Class : II
 Exposure Category : B
 Topographic Category : 1

Base Elev : 0.000 (ft)

Copyright Semaan Engineering Solutions, Inc
 8/26/2008 4:34:33 PM
 Page : 33



Load Case: 1.0D + 1.0W 60.00 mph Serviceability 27 Iterations

Gust Response Factor : 1.10 Wind Importance Factor : 1.00

Dead Load Factor : 1.00

Wind Load Factor : 1.00

Calculated Forces

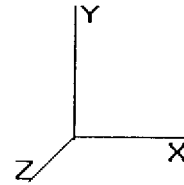
Seg Elev (ft)	Pu FY (-) (kips)	Vu FX (-) (kips)	Tu MY (ft-kips)	Mu MZ (ft-kips)	Mu MX (ft-kips)	Resultant Moment (ft-kips)	phi Pn (kips)	phi Vn (kips)	phi Tn (ft-kips)	phi Mn (ft-kips)	Total Deflect (in)	Rotation (deg)	Ratio
0.00	-42.37	-7.17	0.00	-892.29	0.00	892.29	4,249.43	2,124.71	9,129.72	4,571.64	0.00	0.00	0.205
5.00	-40.89	-7.11	0.00	-856.42	0.00	856.42	4,160.30	2,080.15	8,749.20	4,381.10	0.03	-0.05	0.205
10.00	-39.44	-7.05	0.00	-820.86	0.00	820.86	4,071.17	2,035.59	8,376.78	4,194.62	0.11	-0.10	0.205
15.00	-38.02	-6.99	0.00	-785.60	0.00	785.60	3,982.04	1,991.02	8,012.46	4,012.19	0.24	-0.15	0.205
20.00	-36.62	-6.93	0.00	-750.65	0.00	750.65	3,892.91	1,946.46	7,656.24	3,833.81	0.43	-0.20	0.205
25.00	-35.25	-6.87	0.00	-716.01	0.00	716.01	3,803.78	1,901.89	7,308.13	3,659.49	0.67	-0.26	0.205
30.00	-33.91	-6.81	0.00	-681.67	0.00	681.67	3,714.66	1,857.33	6,968.11	3,489.23	0.97	-0.31	0.205
35.00	-32.59	-6.74	0.00	-647.63	0.00	647.63	3,625.53	1,812.76	6,636.19	3,323.03	1.33	-0.37	0.204
40.00	-31.30	-6.67	0.00	-613.91	0.00	613.91	3,536.40	1,768.20	6,312.37	3,160.88	1.75	-0.43	0.203
42.96	-30.54	-6.63	0.00	-594.19	0.00	594.19	3,483.69	1,741.85	6,124.70	3,066.90	2.02	-0.46	0.203
45.00	-29.67	-6.59	0.00	-580.64	0.00	580.64	3,447.27	1,723.63	5,996.65	3,002.78	2.23	-0.49	0.202
46.50	-29.02	-6.57	0.00	-570.75	0.00	570.75	3,420.53	1,710.26	5,903.51	2,956.14	2.38	-0.51	0.202
49.04	-27.95	-6.52	0.00	-554.08	0.00	554.08	2,949.65	1,474.82	5,129.47	2,568.55	2.66	-0.54	0.225
50.00	-27.74	-6.52	0.00	-547.82	0.00	547.82	2,934.98	1,467.49	5,078.35	2,542.95	2.77	-0.55	0.225
55.00	-26.64	-6.45	0.00	-515.22	0.00	515.22	2,858.58	1,429.29	4,816.28	2,411.72	3.38	-0.62	0.223
60.00	-25.57	-6.37	0.00	-482.98	0.00	482.98	2,782.18	1,391.09	4,561.15	2,283.97	4.06	-0.68	0.221
65.00	-24.52	-6.30	0.00	-451.11	0.00	451.11	2,705.79	1,352.89	4,312.97	2,159.69	4.82	-0.75	0.218
70.00	-23.50	-6.22	0.00	-419.62	0.00	419.62	2,629.39	1,314.70	4,071.73	2,038.89	5.64	-0.82	0.215
75.00	-22.49	-6.14	0.00	-388.51	0.00	388.51	2,552.99	1,276.50	3,837.43	1,921.57	6.54	-0.89	0.211
80.00	-21.51	-6.07	0.00	-357.78	0.00	357.78	2,476.60	1,238.30	3,610.07	1,807.72	7.52	-0.97	0.207
85.00	-20.55	-5.98	0.00	-327.45	0.00	327.45	2,400.20	1,200.10	3,389.66	1,697.35	8.57	-1.04	0.202
87.54	-20.07	-5.89	0.00	-312.27	0.00	312.27	2,361.39	1,180.70	3,280.36	1,642.62	9.13	-1.08	0.199
90.00	-19.33	-5.79	0.00	-297.78	0.00	297.78	2,323.81	1,161.90	3,176.19	1,590.46	9.70	-1.11	0.196
92.46	-18.60	-5.69	0.00	-283.56	0.00	283.56	1,945.12	972.56	2,675.48	1,339.73	10.28	-1.15	0.221
95.00	-18.18	-5.60	0.00	-269.09	0.00	269.09	1,912.73	956.37	2,586.73	1,295.29	10.90	-1.19	0.217
100.00	-17.39	-5.42	0.00	-241.07	0.00	241.07	1,849.07	924.53	2,416.62	1,210.11	12.19	-1.27	0.209
105.00	-16.61	-5.24	0.00	-213.98	0.00	213.98	1,785.40	892.70	2,252.30	1,127.82	13.56	-1.35	0.199
110.00	-15.85	-5.05	0.00	-187.80	0.00	187.80	1,721.74	860.87	2,093.76	1,048.44	15.01	-1.43	0.188
114.50	-13.54	-4.29	0.00	-165.07	0.00	165.07	1,664.44	832.22	1,956.02	979.46	16.39	-1.49	0.177
115.00	-13.47	-4.29	0.00	-162.92	0.00	162.92	1,658.08	829.04	1,941.01	971.95	16.54	-1.50	0.176
120.00	-12.78	-4.21	0.00	-141.46	0.00	141.46	1,594.41	797.21	1,794.04	898.35	18.16	-1.58	0.166
125.00	-10.43	-3.31	0.00	-120.40	0.00	120.40	1,530.75	765.37	1,652.86	827.66	19.84	-1.65	0.152
130.00	-9.83	-3.23	0.00	-103.84	0.00	103.84	1,467.09	733.54	1,517.46	759.86	21.61	-1.72	0.143
132.12	-9.58	-3.20	0.00	-96.99	0.00	96.99	1,440.09	720.05	1,461.80	731.99	22.38	-1.75	0.139
134.00	-7.22	-2.44	0.00	-90.98	0.00	90.98	1,416.15	708.08	1,413.31	707.70	23.07	-1.77	0.134
135.00	-7.06	-2.43	0.00	-88.54	0.00	88.54	1,403.42	701.71	1,387.85	694.96	23.44	-1.79	0.132
135.87	-6.93	-2.42	0.00	-86.43	0.00	86.43	852.81	426.41	858.59	429.94	23.77	-1.80	0.209
140.00	-6.62	-2.35	0.00	-76.45	0.00	76.45	821.26	410.63	796.00	398.59	25.35	-1.85	0.200
142.00	-6.14	-2.12	0.00	-71.43	0.00	71.43	805.98	402.99	766.55	383.84	26.14	-1.90	0.194
145.00	-5.94	-2.09	0.00	-65.05	0.00	65.05	783.06	391.53	723.40	362.24	27.35	-1.96	0.187
150.00	-5.61	-2.02	0.00	-54.62	0.00	54.62	744.87	372.43	654.27	327.62	29.45	-2.06	0.174
155.00	-5.30	-1.95	0.00	-44.53	0.00	44.53	706.67	353.33	588.61	294.74	31.66	-2.15	0.159
160.00	-4.99	-1.89	0.00	-34.76	0.00	34.76	668.47	334.23	526.42	263.60	33.97	-2.24	0.139
165.00	-4.70	-1.83	0.00	-25.31	0.00	25.31	630.27	315.14	467.70	234.20	36.36	-2.32	0.116
170.00	-4.42	-1.77	0.00	-16.17	0.00	16.17	592.07	296.04	412.46	206.53	38.83	-2.39	0.086
174.00	-2.53	-1.11	0.00	-9.11	0.00	9.11	561.51	280.76	370.76	185.65	40.86	-2.43	0.054
175.00	-2.48	-1.10	0.00	-8.00	0.00	8.00	553.87	276.94	360.68	180.61	41.36	-2.44	0.049
180.00	0.00	-0.99	0.00	-2.50	0.00	2.50	515.68	257.84	312.38	156.42	43.93	-2.46	0.016

Pole : 302506
 Location : Winchester CT 3, CT
 Height : 180.0 (ft)
 Shape : 18 Sides
 Base Dia : 52.75 (in)
 Top Dia : 15.00 (in)
 Taper : 0.219444 (in/ft)

Code: ANSI/TIA-222 Rev G
 Struct Class : II
 Exposure Category : B
 Topographic Category : 1

Base Elev : 0.000 (ft)

Copyright Semaan Engineering Solutions, Inc
 8/26/2008 4:34:34 PM
 Page: 34



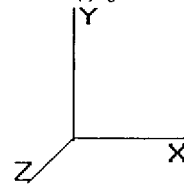
Analysis Summary

Load Case	Reactions						Max Usage	
	Shear FX (kips)	Shear FZ (kips)	Axial FY (kips)	Moment MX (ft-kips)	Moment MY (ft-kips)	Moment MZ (ft-kips)	Elev (ft)	Interaction Ratio
1.2D + 1.6W	26.94	0.00	50.80	0.00	0.00	3305.75	49.04	0.80
0.9D + 1.6W	25.82	0.00	38.09	0.00	0.00	3188.12	49.04	0.78
1.2D + 1.0Di + 1.0Wi	5.80	0.00	105.88	0.00	0.00	793.11	92.46	0.23
1.2D + 1.0E	14.34	0.00	50.83	0.00	0.00	1626.31	49.04	0.38
0.9D + 1.0E	14.33	0.00	38.12	0.00	0.00	1601.16	49.04	0.37
1.0D + 1.0W	7.17	0.00	42.37	0.00	0.00	892.29	49.04	0.23

Pole : 302506
 Location : Winchester CT 3, CT
 Height : 180.0 (ft)
 Shape : 18 Sides
 Base Dia : 52.75 (in)
 Top Dia : 15.00 (in)
 Taper : 0.219444 (in/ft)

Code: ANSI/TIA-222 Rev G
 Struct Class : II
 Exposure Category : B
 Topographic Category : 1

Base Elev : 0.000 (ft)



Base Summary

Reactions

Original Design			Analysis			
Moment (kip-ft)	Axial (kip)	Shear (kip)	Moment (kip-ft)	Axial (kip)	Shear (kip)	Moment Design %
3,377.90	34.30	28.38	3,305.75	105.88	26.94	97.86

Base Plate

Yield (ksi)	Thick (in)	Width (in)	Style	Poly Sides	Clip Len (in)	Effective Len (in)	Mu (kip-in)	Phi Mn (kip-in)	Ratio
60.0	2.000	68.000	Round	0	0.00	10.464	541.36	565.05	0.96

Anchor Bolts

Bolt Circle	Num Bolts	Bolt Type	Bolt Dia (in)	Yield (ksi)	Ultimate (ksi)	Arrange	Cluster Dist (in)	Start Angle (deg)	Compression			Tension		
									Force (kip)	Allow (kip)	Ratio	Force (kip)	Allow (kip)	Ratio
62.00	16	2.25" 18J	2.25	75.00	100.00	Radial	0.00	0.0	166.57	260.00	0.65	153.34	260.00	0.60