



STATE OF CONNECTICUT
CONNECTICUT SITING COUNCIL

Ten Franklin Square, New Britain, CT 06051
Phone: (860) 827-2935 Fax: (860) 827-2950
E-Mail: siting.council@ct.gov
Web Site: portal.ct.gov/csc

VIA ELECTRONIC MAIL

June 6, 2024

Kenneth C. Baldwin, Esq.
Robinson & Cole LLP
280 Trumbull Street
Hartford, CT 06103
kbaldwin@rc.com

RE: **EM-VER-157-240408-** Cellco Partnership d/b/a Verizon Wireless notice of intent to modify an existing telecommunications facility located at 237 Godfrey Road, Weston, Connecticut.
Acknowledgement of Complete Request.

Dear Attorney Baldwin:

The Connecticut Siting Council (Council) is in receipt of your correspondence of June 5, 2024 submitted in response to the Council's May 6, 2024 notification of an incomplete request for exempt modification with regard to the above-referenced matter.

The submission renders the request for exempt modification complete and the Council will process the request in accordance with the Federal Communications Commission 60-day timeframe.

Thank you for your attention and cooperation.

Sincerely,

Melanie Bachman
Executive Director

MAB/ANM/laf

June 5, 2024

Via Electronic and U.S. Mail

Melanie A. Bachman, Esq.
Executive Director/Staff Attorney
Connecticut Siting Council
10 Franklin Square
New Britain, CT 06051

Re: **EM-VER-157-240408 – Notice of Exempt Modification – Facility Modification
237 Godfrey Road, Weston, Connecticut**

Dear Attorney Bachman:

On May 6, 2024, Cellco Partnership d/b/a Verizon Wireless (“Cellco”) received the Siting Council’s letter which identified a deficiency in the above referenced filing. The deficiency letter states that the construction drawings dated February 12, 2024, cites the 2018 Connecticut State Building Code (CSBC) and not the adopted 2022 CSBC effective October 1, 2022. We apologize for this oversight.

A copy of the updated construction drawings, dated May 30, 2024, is attached for the Council’s review.

Sincerely,



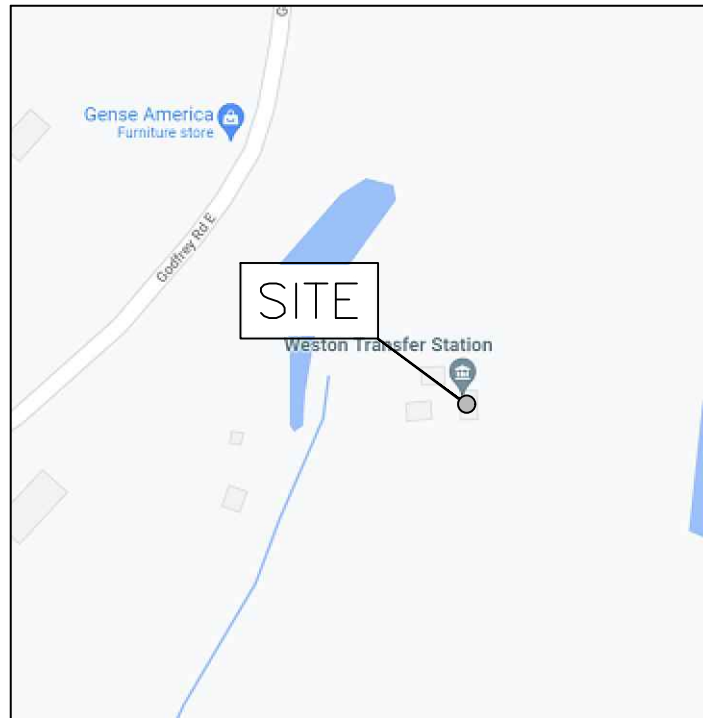
Kenneth C. Baldwin

Enclosures
Copy to:
Alex Tyurin



WIRELESS COMMUNICATIONS FACILITY

LOCATION MAP



**WESTON NORTH CT
237 GODFREY ROAD
WESTON, CT 06883**

**PROJECT:
L-SUB6-CARRIER ADD**

SUPPORTING DOCUMENTS

RADIO FREQUENCY (RF) DESIGN: 12/01/23
MOUNT MAPPING REPORT: 04/16/21 (BY RKS DESIGN AND ENGINEERING, LLC)
MOUNT ANALYSIS: 12/22/23 (BY COLLIERS ENGINEERING)
STRUCTURAL ANALYSIS: (SELF SUPPORT TOWER): 02/12/24 (BY CENTERLINE)

PROJECT INFORMATION

SITE NAME: WESTON NORTH CT
LOCATION CODE: 468022
SITE ADDRESS: 237 GODFREY ROAD
WESTON, CT 06883
LATITUDE: 41° 14' 31.21" N | 41.242002 N
LONGITUDE: 73° 21' 51.51" W | 73.364309 W

BUILDING CODES

APPLICABLE BUILDING CODES: SUBCONTRACTOR'S WORK SHALL COMPLY WITH ALL APPLICABLE NATIONAL, STATE, AND LOCAL CODES AS ADOPTED BY THE LOCAL AUTHORITY HAVING JURISDICTION (AHJ) FOR THE LOCATION. THE EDITION OF THE AHJ ADOPTED CODES AND STANDARDS IN EFFECT ON THE DATE OF CONTRACT AWARD SHALL GOVERN THE DESIGN.

- BUILDING CODE: IBC 2021 & CONNECTICUT STATE BUILDING CODE 2022
- ELECTRICAL CODE: 2020 NATIONAL ELECTRICAL CODE
- LIGHTNING CODE: NFPA 780, 2020
- TELECOMMUNICATIONS INDUSTRY ASSOCIATION ANSI (TIA) 222-H, STRUCTURAL STANDARDS FOR STEEL ANTENNA TOWER AND ANTENNA SUPPORTING STRUCTURES; REFER TO ELECTRICAL DRAWINGS FOR SPECIFIC ELECTRICAL STANDARDS.

DRAWING INDEX

NO.	DESCRIPTION
T-1	TITLE SHEET
A-1	TOWER ELEVATION & COMPOUND PLAN
A-2	ANTENNA CONFIGURATION & SCOPE OF WORK
A-3	EQUIPMENT SPECIFICATIONS, BILL OF MATERIALS & PLUMBING DIAGRAM
S-1	STRUCTURAL DETAILS
SN-1	STRUCTURAL NOTES

RFDS PROJECT SCOPE

RFDS SOW: 700/ 850/ PCS/ AWS/ L-SUB6 CARRIER ADDS, SAMSUNG DUAL BAND RRH SWAP, ANTENNA CHANGE

- REMOVE 850 CARRIERS AND ADD 700/ 850/ PCS/ AWS/ L-SUB6 CARRIERS
- INSTALL (3) SAMSUNG MT6413-77A L-SUB6 ALL-IN-ONE ANTENNA/ RRHS
- INSTALL (4) NEW JMA MX06FHG665-HG ANTENNAS ON NEW JMA 2" EDGE-TO-EDGE MOUNTS IN BETA/GAMMA SECTORS AND (2) NEW JMA MX06FHG865-HG ANTENNAS ON NEW JMA 2" EDGE-TO-EDGE MOUNT IN ALPHA SECTOR
- INSTALL (3) NEW SAMSUNG RF4461D-13A & (3) NEW SAMSUNG B2/B66A RRH ORAN (RF4439D-25A) TO TOWER
- REPLACE (3) EXISTING SECTOR MOUNTS WITH (3) NEW MOUNTS BY PERFECT VISION, PART# PV-SFR-GS-12-25-AP1
- PLUMB 700/ 850/ PCS/ AWS/ L-SUB6 ACCORDING TO THE PLUMBING DIAGRAM
- USE RF PORTS ON DUAL BAND RRHS TO COMMUNICATE WITH RETS VIA SMART BIAS-T BUILT INTO THE ANTENNA
- CAP AND WEATHERPROOF UNUSED PORTS/CONNECTORS
- REMOVE ANY UNUSED COAX, TOWER/SHELTER DIPLEXERS

SUMMARY:

- ADDING 9 ANTENNAS, REMOVING 15, RETAINING 0 (FINAL ANTENNA COUNT: 9)
- ADDING 9 RRU'S, REMOVING 6, RETAINING 0 (FINAL RRU COUNT: 9)



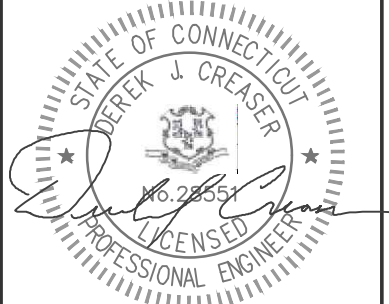
20 ALEXANDER DRIVE
WALLINGFORD, CT 06492



750 W CENTER ST, SUITE 301
WEST BRIDGEWATER, MA 02379
PHONE: 781.713.4725

REVISIONS		
NO.	DATE	DESCRIPTION
12	05/30/24	REVISED PER 1A
11	02/12/24	REVISED PER MA
10	01/26/24	REVISED PER MA
9	12/27/23	REVISED PER COMMENTS
8	12/20/23	REVISED PER RFDS
7	11/27/23	REVISED FOR REVIEW
6	11/22/23	REVISED PER RFDS
5	09/15/22	ISSUED FOR CONSTRUCTION
4	07/26/22	REVISED FOR REVIEW
3	04/26/22	ISSUED FOR CONSTRUCTION
2	04/13/22	REVISED FOR REVIEW
1	02/23/22	REVISED FOR REVIEW
0	02/16/22	ISSUED FOR REVIEW

DESIGNED BY: KL
APPROVED BY: DC



IT IS A VIOLATION OF LAW FOR ANY PERSON UNLESS THEY ARE ACTING UNDER THE DIRECTION OF A LICENSED PROFESSIONAL ENGINEER TO ALTER THIS DOCUMENT, UNLESS EXPLICITLY AGREED TO BY THE ENGINEER IN WRITING. THE ENGINEER DISCLAIMS ALL LIABILITY ASSOCIATED WITH THE REUSE, ALTERATION OR MODIFICATION OF THE CONTENTS HEREIN.



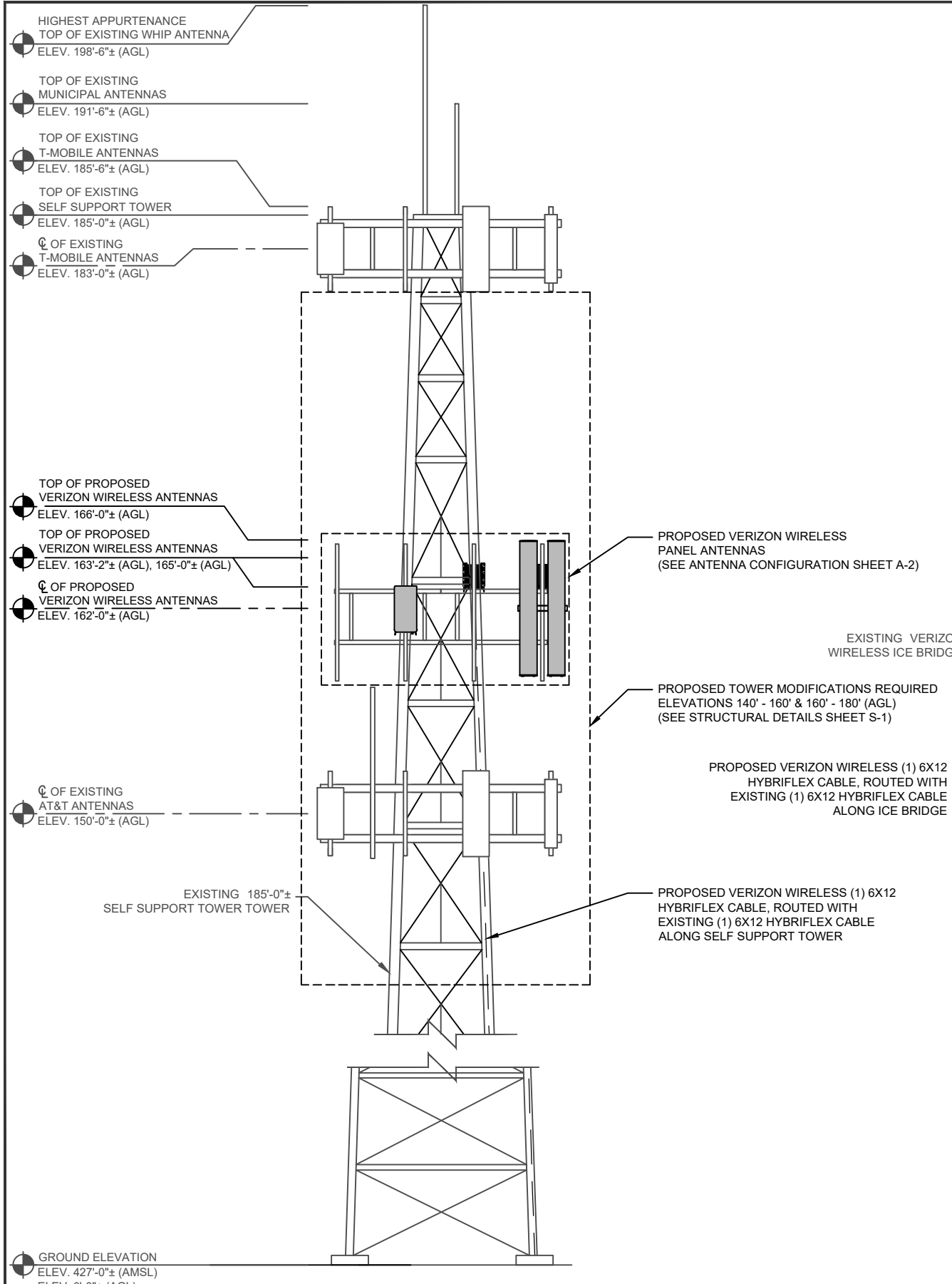
SITE NAME:
WESTON NORTH CT

SITE ADDRESS:
237 GODFREY ROAD
WESTON, CT 06883
FAIRFIELD COUNTY

LOCATION CODE:
468022

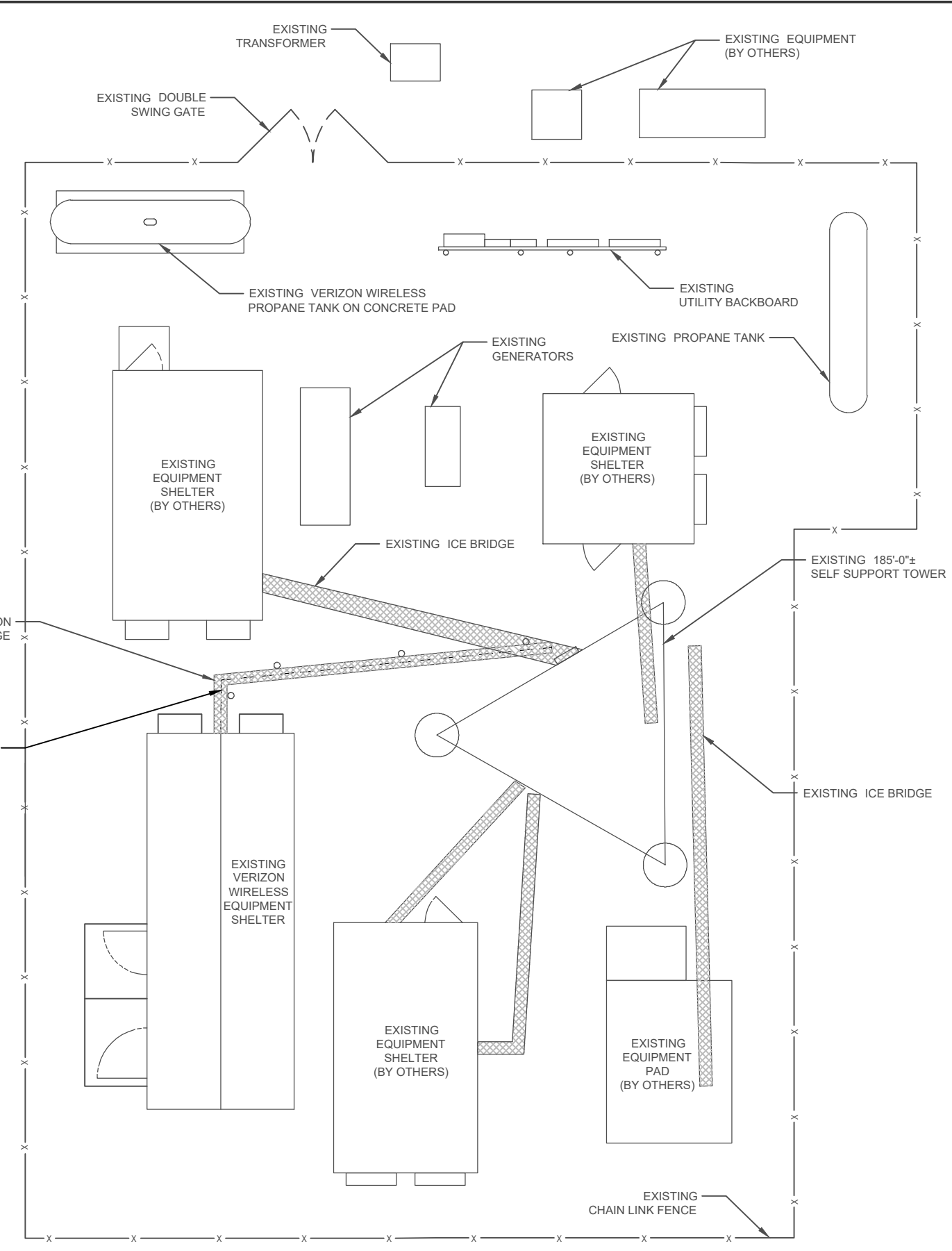
SHEET TITLE:
TITLE SHEET

SHEET #: T-1 REVISION: 12



1 TOWER ELEVATION
 SCALE: 1/4" = 1'-0" (22"X34")
 1/8" = 1'-0" (11"X17")

GRAPHIC SCALE
 (IN FEET)



2 COMPOUND PLAN
 SCALE: 3/16" = 1'-0" (22"X34")
 3/32" = 1'-0" (11"X17")

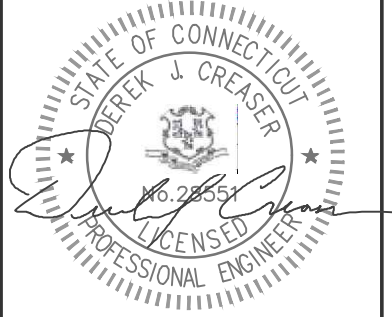
GRAPHIC SCALE
 (IN FEET)

verizon
 20 ALEXANDER DRIVE
 WALLINGFORD, CT 06492

CENTERLINE
 ENGINEERING SERVICES, PA
 750 W CENTER ST, SUITE 301
 WEST BRIDGEWATER, MA 02379
 PHONE: 781.713.4725

REVISIONS		
NO.	DATE	DESCRIPTION
12	05/30/24	REVISED PER 1A
11	02/12/24	REVISED PER MA
10	01/26/24	REVISED PER MA
9	12/27/23	REVISED PER COMMENTS
8	12/20/23	REVISED PER RFDS
7	11/27/23	REVISED FOR REVIEW
6	11/22/23	REVISED PER RFDS
5	09/15/22	ISSUED FOR CONSTRUCTION
4	07/26/22	REVISED FOR REVIEW
3	04/26/22	ISSUED FOR CONSTRUCTION
2	04/13/22	REVISED FOR REVIEW
1	02/23/22	REVISED FOR REVIEW
0	02/16/22	ISSUED FOR REVIEW

DESIGNED BY: KL
 APPROVED BY: DC



IT IS A VIOLATION OF LAW FOR ANY PERSON UNLESS THEY ARE ACTING UNDER THE DIRECTION OF A LICENSED PROFESSIONAL ENGINEER TO ALTER THIS DOCUMENT, UNLESS EXPLICITLY AGREED TO BY THE ENGINEER IN WRITING. THE ENGINEER DISCLAIMS ALL LIABILITY ASSOCIATED WITH THE REUSE, ALTERATION OR MODIFICATION OF THE CONTENTS HEREIN.



SITE NAME:
 WESTON NORTH CT

SITE ADDRESS:
 237 GODFREY ROAD
 WESTON, CT 06883
 FAIRFIELD COUNTY

LOCATION CODE:
 468022

SHEET TITLE:
 TOWER ELEVATION &
 COMPOUND PLAN

SHEET #: A-1 REVISION: 12

NOTES

- IF SHOWN, ANTENNA SPACING DIMENSIONS ARE TO THE CENTER OF THE EXIST. ANTENNA AND PROP. ANTENNA FACE.
- REFER TO THE FINAL RFDS PROVIDED BY VERIZON FOR THE LATEST INFORMATION REGARDING EQUIPMENT MODELS, REQUIRED CABLING & DOWN-TILT INFORMATION.
- REFER TO ASSEMBLY DRAWING AND MOUNT ANALYSIS BY COLLIERS ENGINEERING FOR ALL REQUIRED EQUIPMENT MODIFICATION INFORMATION.

GENERAL ABBREVIATION LIST

- ABP ABOVE BASE PLATE
- AGL ABOVE GRADE LEVEL
- AMSL ABOVE MEAN SEA LEVEL
- AWS ADVANCED WIRELESS SERVICE
- HDG HOT DIPPED GALVANIZED
- OVP OVER VOLTAGE PROTECTION
- RRH REMOTE RADIO HEAD
- V.I.F. VERIFY IN FIELD
- W.P. WORK POINT
- A.F.R. ABOVE FINISH ROOF

SCOPE OF WORK (ALL) SECTORS

- | | | | |
|--|---|--|--|
| ① EXIST. ANTENNA (TO BE REMOVED)
MODEL: ANDREW DB846F65ZAXY | ⑤ EXIST. SPARE ANTENNA
(TO BE REMOVED) | ⑨ NEW ANTENNA MOUNTED VIA NEW DUAL-MOUNT
BRACKETS (JMA 2" SIDE-BY-SIDE)
MODEL: JMA MX06FHG865-HG | ⑬ NEW DUAL BAND RRH
MODEL: SAMSUNG B2/B66A RRH ORAN
(RF4439D-25A) |
| ② EXIST. ANTENNA (TO BE REMOVED)
MODEL: DECIBEL PRODUCTS
DB846H0E-SX | ⑥ EXIST. RRH (TO BE REMOVED)
MODEL: NOKIA UHIC B4 RRH 2X60-4R | ⑩ NEW ANTENNA MOUNTED VIA NEW DUAL-MOUNT
BRACKETS (JMA 2" SIDE-BY-SIDE)
MODEL: JMA MX06FHG665-HG | ⑭ NEW OVP BOX MOUNT TBD
MODEL: 6 OVP |
| ③ EXIST. ANTENNA (TO BE REMOVED)
MODEL: ANTEL BXA-70063-6CF | ⑦ EXIST. OVP BOX (TO REMAIN)
MODEL: 6 OVP | ⑪ NEW DUAL BAND RRH
MODEL: RF4461D-13A | ⑮ PROPOSED MOUNT KIT, PERFECT VISION
PART#: PV-SFR-GS12-25-AP1, REFER TO
MOUNT ANALYSIS AND ASSEMBLY
DRAWINGS BY COLLIERS ENGINEERING
DATED 12/22/23 |
| ④ EXIST. ANTENNA (TO BE REMOVED)
MODEL: KATHREIN 742213-2110 | ⑧ NEW ANTENNA
MODEL: SAMSUNG MT6413-77A
MOUNTED ON EXIST. PIPE MAST | | |



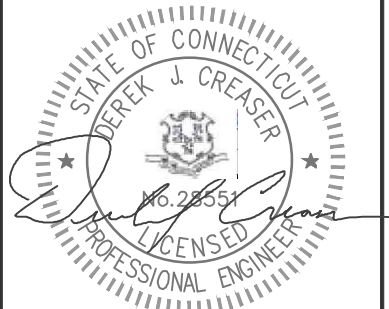
20 ALEXANDER DRIVE
WALLINGFORD, CT 06492



750 W CENTER ST, SUITE 301
WEST BRIDGEWATER, MA 02379
PHONE: 781.713.4725

REVISIONS		
12	05/30/24	REVISED PER 1A
11	02/12/24	REVISED PER MA
10	01/26/24	REVISED PER MA
9	12/27/23	REVISED PER COMMENTS
8	12/20/23	REVISED PER RFDS
7	11/27/23	REVISED FOR REVIEW
6	11/22/23	REVISED PER RFDS
5	09/15/22	ISSUED FOR CONSTRUCTION
4	07/26/22	REVISED FOR REVIEW
3	04/26/22	ISSUED FOR CONSTRUCTION
2	04/13/22	REVISED FOR REVIEW
1	02/23/22	REVISED FOR REVIEW
0	02/16/22	ISSUED FOR REVIEW
NO.	DATE	DESCRIPTION

DESIGNED BY: KL
APPROVED BY: DC



IT IS A VIOLATION OF LAW FOR ANY PERSON UNLESS THEY ARE ACTING UNDER THE DIRECTION OF A LICENSED PROFESSIONAL ENGINEER TO ALTER THIS DOCUMENT, UNLESS EXPLICITLY AGREED TO BY THE ENGINEER IN WRITING. THE ENGINEER DISCLAIMS ALL LIABILITY ASSOCIATED WITH THE REUSE, ALTERATION OR MODIFICATION OF THE CONTENTS HEREIN.



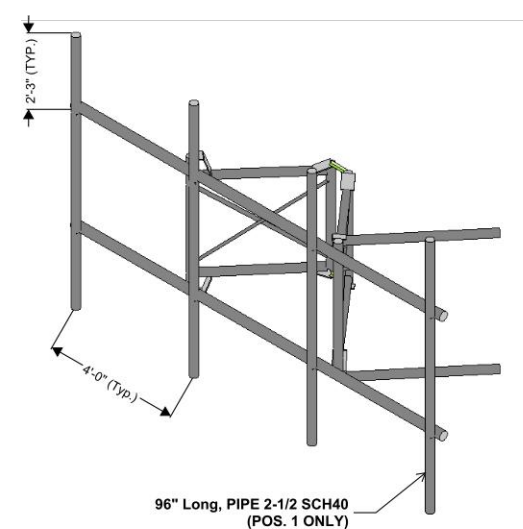
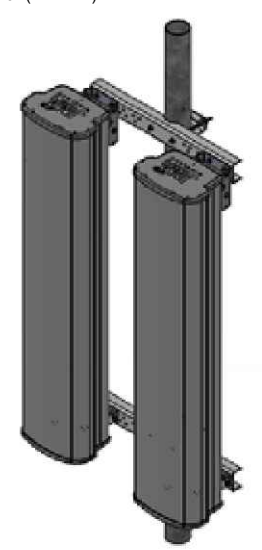
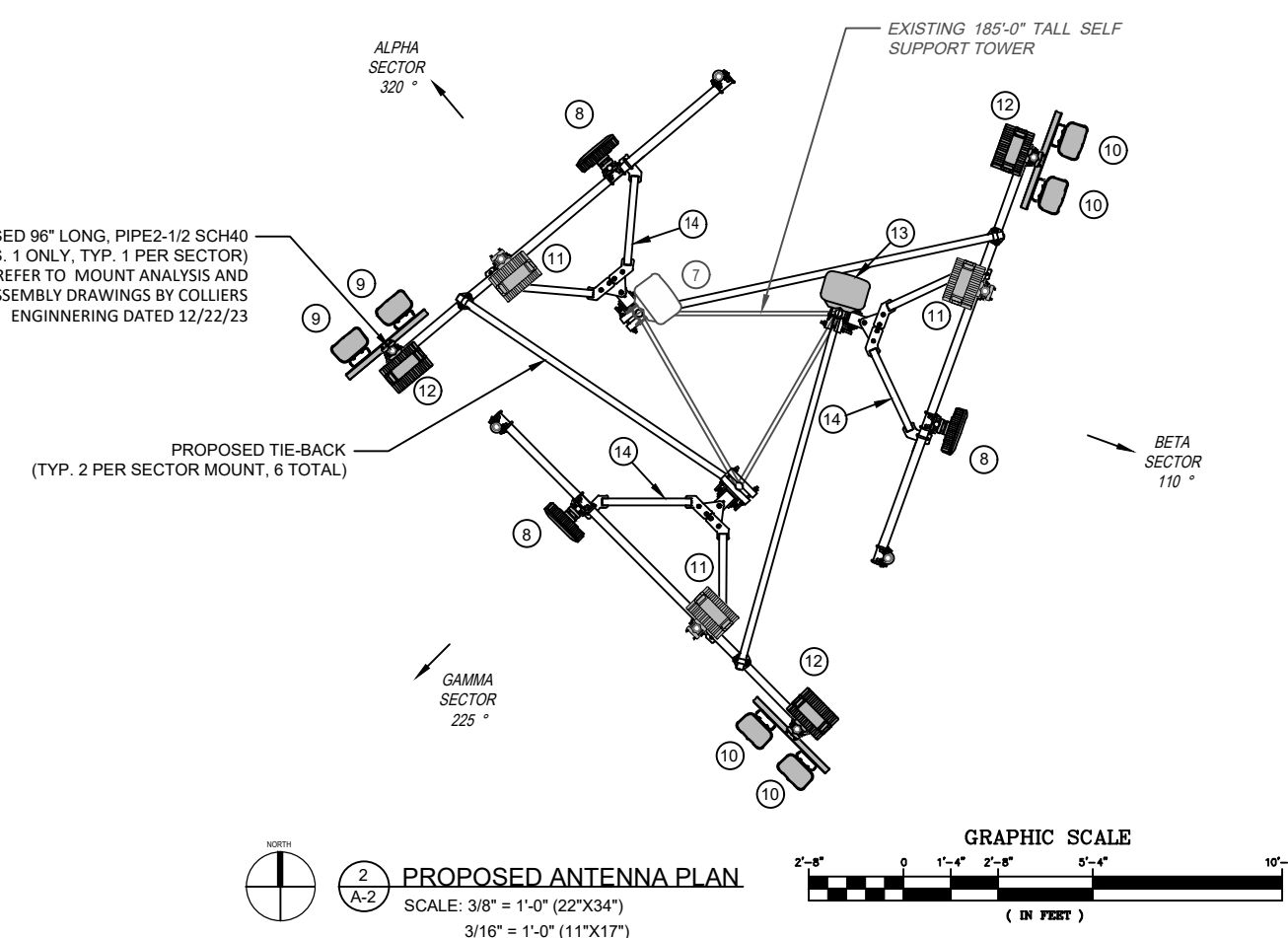
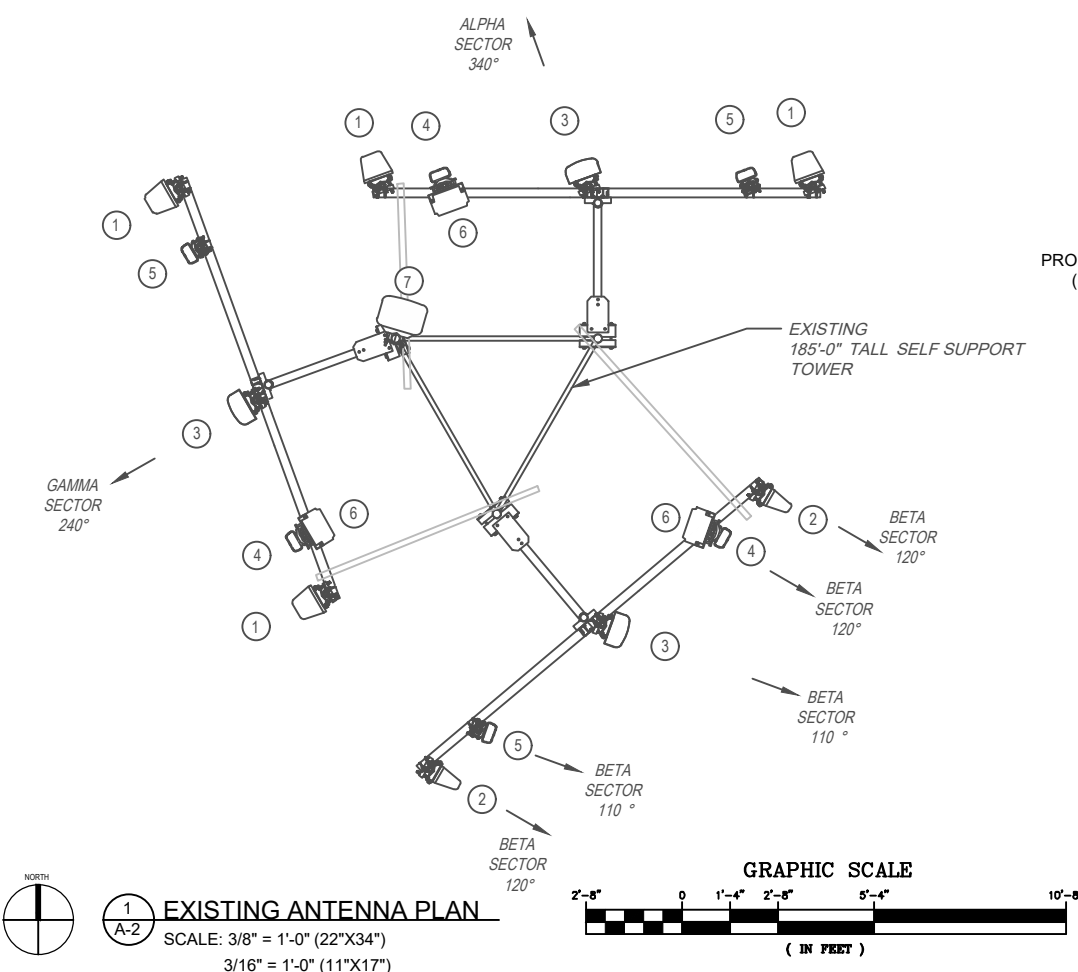
SITE NAME:
WESTON NORTH CT

SITE ADDRESS:
237 GODFREY ROAD
WESTON, CT 06883
FAIRFIELD COUNTY

LOCATION CODE:
468022

SHEET TITLE:
ANTENNA CONFIGURATION &
SCOPE OF WORK

SHEET #: A-2 REVISION: 12



BILL OF MATERIALS				
ITEM	DESCRIPTION	QTY.	LENGTH	COMMENTS
①	L-SUB6 ANTENNA	3	-	(SAMSUNG MT6413-77A) MOUNTED TO NEW ANTENNA PIPE
②	LTE 700/850/PCS/AWS ANTENNA	4	-	(JMA MX06FHG665-HG) MOUNTED TO NEW PIPE MAST VIA NEW DUAL MOUNT BRACKETS (JMA 2" EDGE-TO-EDGE)
③	LTE 700/850/PCS/AWS ANTENNA	2	-	(JMA MX06FHG865-HG) MOUNTED TO NEW PIPE MAST VIA NEW DUAL MOUNT BRACKETS (JMA 2" EDGE-TO-EDGE)
④	HYBRIFLEX CABLE	3	15'	ROUTE FROM NEW UPPER OVP TO L-SUB6 ANTENNA
⑤	1/2" JUMPER CABLE	36	10'	ROUTE FROM NEW RRH TO ANTENNA
⑥	LTE 700/850 RRH	3	-	(SAMSUNG RF4461D-13A MOUNTED TO NEW ANTENNA PIPE
⑦	LTE PCS/AWS RRH	3	-	(SAMSUNG B2/B66A RRH ORAN (RF4439D-25A) MOUNTED TO NEW ANTENNA PIPE
⑧	RRH CABLE(S)	6	15'	PROPRIETARY POWER & FIBER CABLES
⑨	UPPER OVP6	1	-	NEW UPPER OVP MOUNT TBD
⑩	6X12 LI HYBRID CABLE	1	250'	ROUTE FROM LOWER OVP RACK TO UPPER OVP BOX
⑪	LOWER OVP6	1	-	LOWER OVP RACK MOUNTED WITHIN EXISTING RACK IN EQUIPMENT AREA

NOTES: 1. INFORMATION SHOWN HEREON IS FOR USE BY VERIZON EQUIPMENT OPERATIONS.
2. INFORMATION IS BASED ON RFDS DATED 12/01/23.
3. * REFER TO ASSEMBLY DRAWING AND MOUNT ANALYSIS BY GPD ENGINEERING AND ARCHITECTURE (WHERE APPLICABLE)

EQUIPMENT DATA								
EQUIPMENT SPECIFICATIONS								
SECTOR	ANTENNA MAKE/MODEL	QTY	AZIMUTH	EQUIPMENT STATUS	HEIGHT (IN)	WIDTH (IN)	DEPTH (IN)	WEIGHT (LBS)
ALPHA	SAMSUNG MT6413-77A	1	320	NEW	28.9	15.8	5.5	57.3
	LTE 700/850/PCS/AWS JMA MX06FHG865-HG	1	320	NEW	95.9	12.2	7.5	51.0
	LTE 700/850/PCS/AWS JMA MX06FHG865-HG	1	320	NEW	95.9	12.2	7.5	51.0
BETA	SAMSUNG MT6413-77A	1	110	NEW	28.9	15.8	5.5	57.3
	LTE 700/850/PCS/AWS JMA MX06FHG665-HG	1	110	NEW	72.0	12.2	7.5	41.0
	LTE 700/850/PCS/AWS JMA MX06FHG665-HG	1	110	NEW	72.0	12.2	7.5	41.0
GAMMA	SAMSUNG MT6413-77A	1	225	NEW	28.9	15.8	5.5	57.3
	LTE 700/850/PCS/AWS JMA MX06FHG665-HG	1	225	NEW	72.0	12.2	7.5	41.0
	LTE 700/850/PCS/AWS JMA MX06FHG665-HG	1	225	NEW	72.0	12.2	7.5	41.0
ALL	APPURTENANCE MAKE/MODEL							
	SAMSUNG B2/B66A RRH ORAN (RF4439D-25A)	3	-	NEW	14.9	14.9	10.04	74.7
	SAMSUNG RF4461D-13A	3	-	NEW	14.9	14.9	10.24	79.1
	SAMSUNG MT6413-77A	3	-	NEW	-	-	-	-
	6 OVP BOX	1	-	NEW	29.0	15.7	10.3	32.0
	6 OVP BOX	1	-	ETR	29.0	15.7	10.3	32.0

NOTES: 1. "ETR" DENOTES EXISTING TO REMAIN.
2. WEIGHTS LISTED ARE WITHOUT MOUNTING BRACKET.
3. INFORMATION IS BASED ON RFDS DATED 12/01/23.



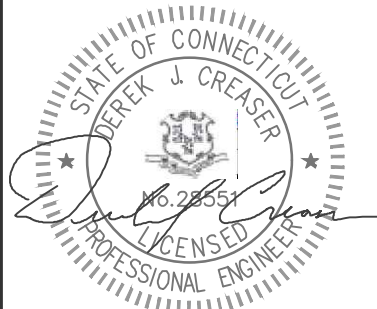
20 ALEXANDER DRIVE
WALLINGFORD, CT 06492



750 W CENTER ST, SUITE 301
WEST BRIDGEWATER, MA 02379
PHONE: 781.713.4725

REVISIONS		
NO.	DATE	DESCRIPTION
12	05/30/24	REVISED PER 1A
11	02/12/24	REVISED PER MA
10	01/26/24	REVISED PER MA
9	12/27/23	REVISED PER COMMENTS
8	12/20/23	REVISED PER RFDS
7	11/27/23	REVISED FOR REVIEW
6	11/22/23	REVISED PER RFDS
5	09/15/22	ISSUED FOR CONSTRUCTION
4	07/26/22	REVISED FOR REVIEW
3	04/26/22	ISSUED FOR CONSTRUCTION
2	04/13/22	REVISED FOR REVIEW
1	02/23/22	REVISED FOR REVIEW
0	02/16/22	ISSUED FOR REVIEW

DESIGNED BY: KL
APPROVED BY: DC



IT IS A VIOLATION OF LAW FOR ANY PERSON UNLESS THEY ARE ACTING UNDER THE DIRECTION OF A LICENSED PROFESSIONAL ENGINEER TO ALTER THIS DOCUMENT, UNLESS EXPLICITLY AGREED TO BY THE ENGINEER IN WRITING. THE ENGINEER DISCLAIMS ALL LIABILITY ASSOCIATED WITH THE REUSE, ALTERATION OR MODIFICATION OF THE CONTENTS HEREIN.

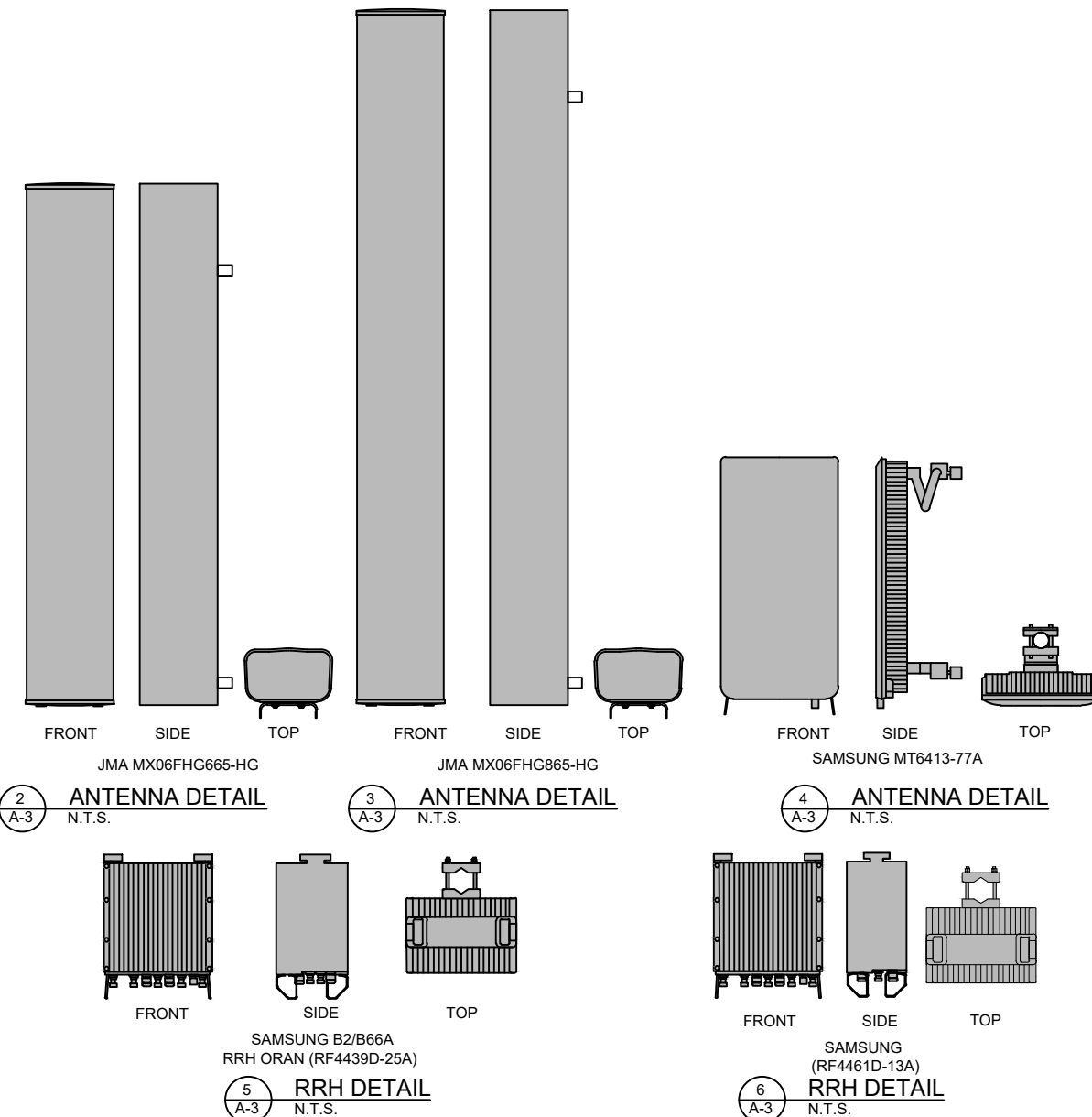
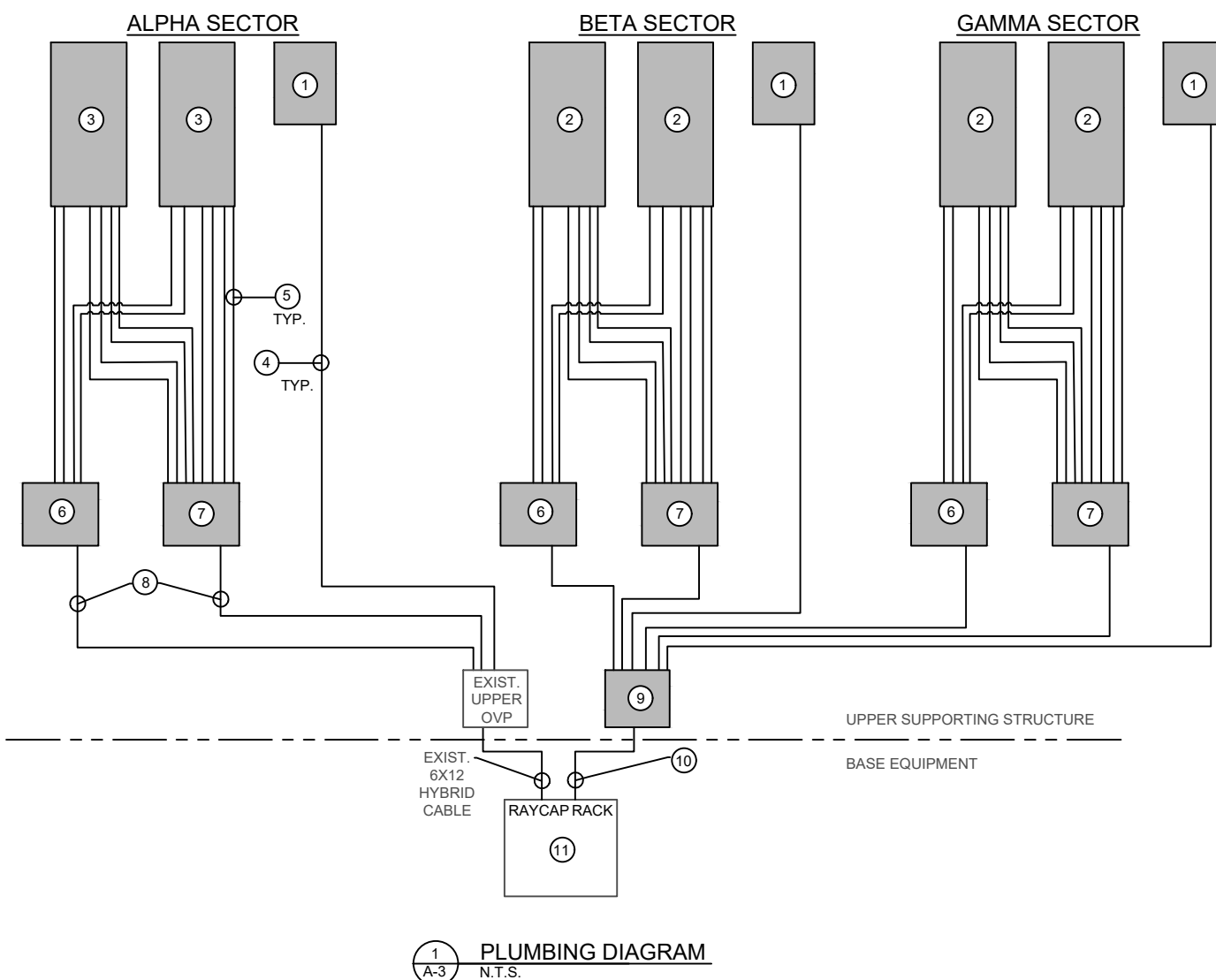


SITE NAME:
WESTON NORTH CT

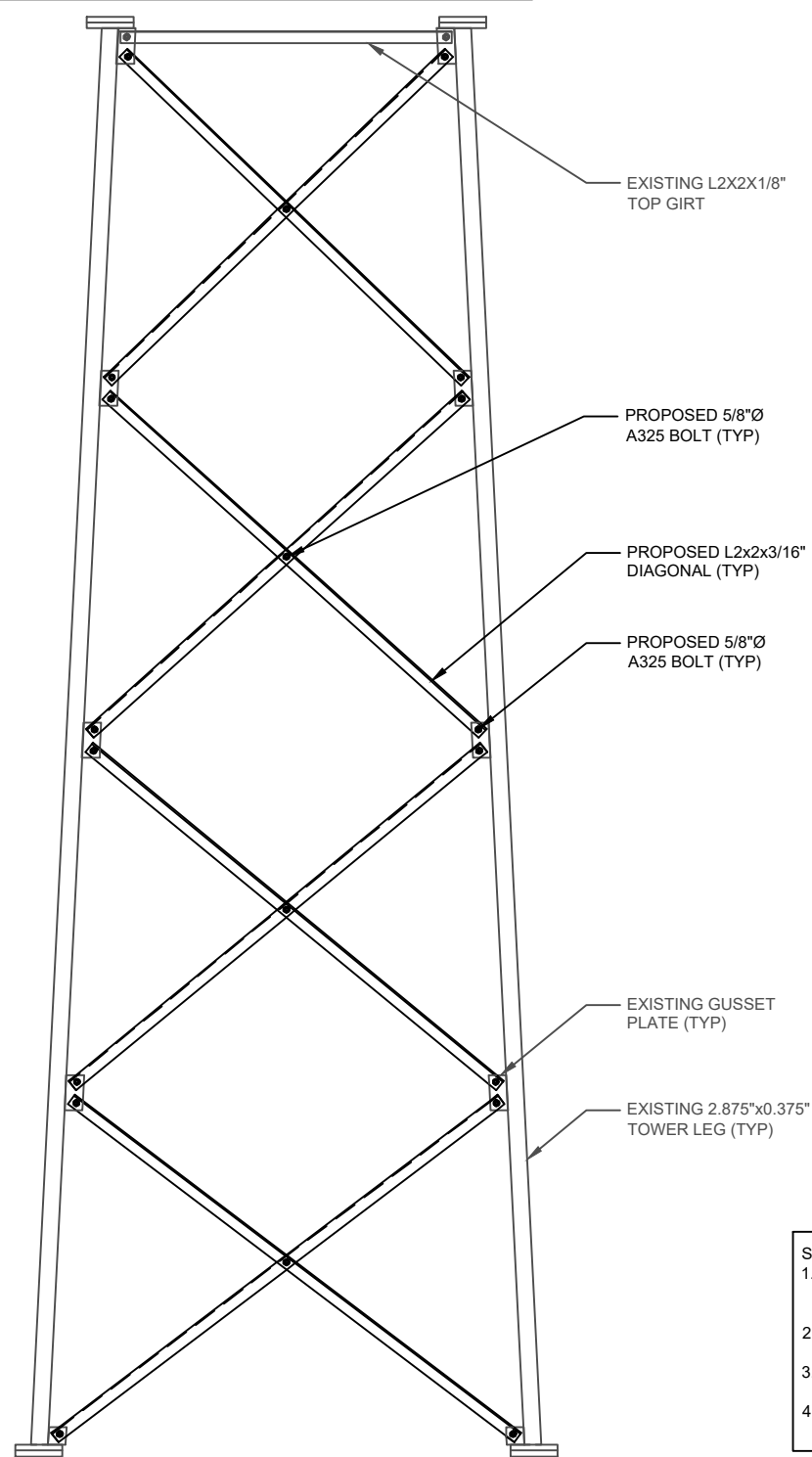
SITE ADDRESS:
237 GODFREY ROAD
WESTON, CT 06883
FAIRFIELD COUNTY

LOCATION CODE:
468022

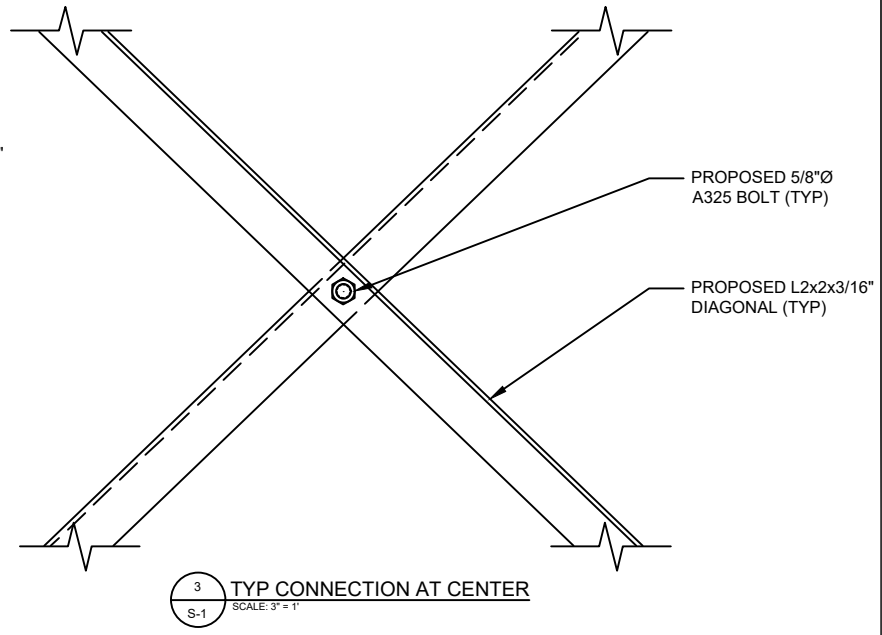
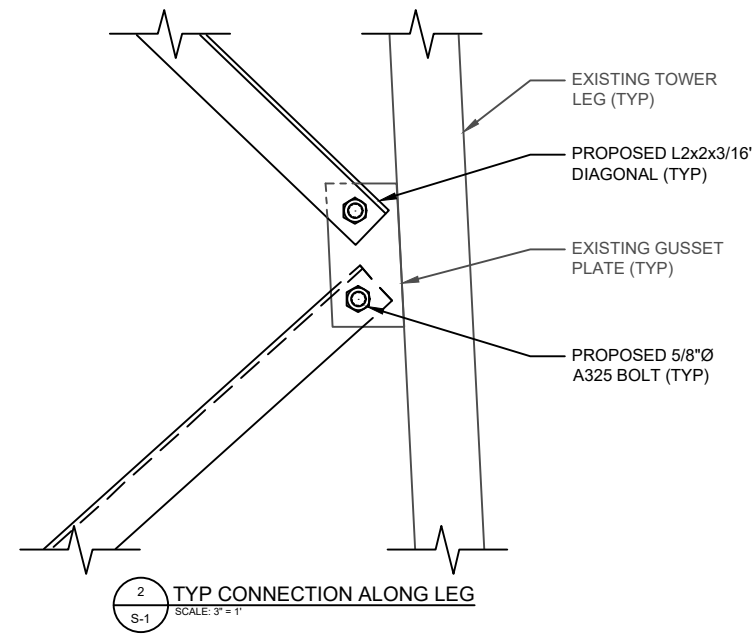
SHEET TITLE:
EQUIPMENT SPECIFICATIONS, BILL OF MATERIALS & PLUMBING DIAGRAM
SHEET #: A-3 REVISION: 12



NOTES:
 1. ONLY ONE PANEL FACE SHOWN FOR CLARITY OF ILLUSTRATION (SIMILAR ALL THREE FACES).



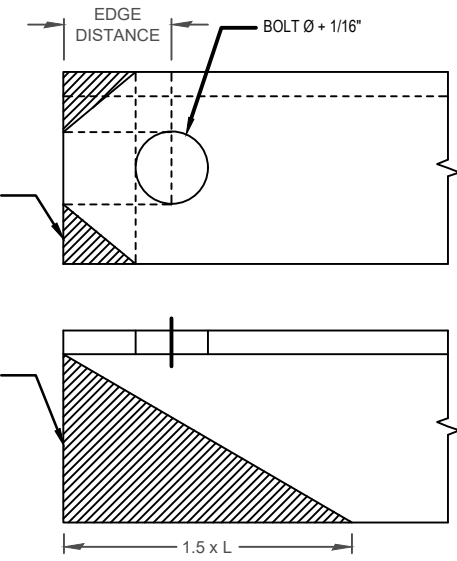
1 TOWER DETAIL (140'-160' & 160'-180')
 SCALE: NTS



NOTE:
 VERIFY FIT UP BEFORE DRILLING HOLES. CONTACT EOR IF COPING INTERFERENCE EXISTS.

LIMIT OF ALLOWABLE COPING WITHOUT ENGINEER'S PRIOR WRITTEN APPROVAL (TYP)

LIMIT OF ALLOWABLE COPING WITHOUT ENGINEER'S PRIOR WRITTEN APPROVAL (TYP)



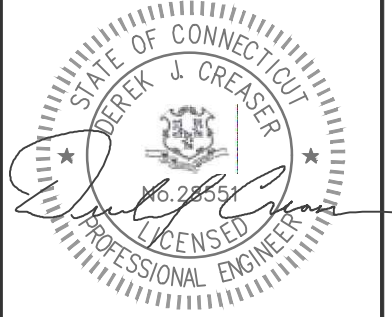
STRUCTURAL NOTES:

- CONTRACTOR SHALL VERIFY ALL LENGTHS AND QUANTITIES PROVIDED PRIOR TO FABRICATION. LENGTHS AND QUANTITIES PROVIDED ARE FOR QUOTING PURPOSES ONLY.
- ANTENNAS AND OTHER APPURTENANCES MAY NEED TO BE TEMPORARILY REMOVED OR RELOCATED DURING THE INSTALLATION OF THE MODIFICATIONS.
- STEEL ANGLES AND PLATES ARE TO BE GRADE A36 UNLESS NOTED OTHERWISE.
- ALL HOLES SHALL BE DRILLED OR PUNCHED.



REVISIONS		
NO.	DATE	DESCRIPTION
12	05/30/24	REVISED PER 1A
11	02/12/24	REVISED PER MA
10	01/26/24	REVISED PER MA
9	12/27/23	REVISED PER COMMENTS
8	12/20/23	REVISED PER RFDS
7	11/27/23	REVISED FOR REVIEW
6	11/22/23	REVISED PER RFDS
5	09/15/22	ISSUED FOR CONSTRUCTION
4	07/26/22	REVISED FOR REVIEW
3	04/26/22	ISSUED FOR CONSTRUCTION
2	04/13/22	REVISED FOR REVIEW
1	02/23/22	REVISED FOR REVIEW
0	02/16/22	ISSUED FOR REVIEW

DESIGNED BY: KL APPROVED BY: DC



IT IS A VIOLATION OF LAW FOR ANY PERSON UNLESS THEY ARE ACTING UNDER THE DIRECTION OF A LICENSED PROFESSIONAL ENGINEER TO ALTER THIS DOCUMENT, UNLESS EXPLICITLY AGREED TO BY THE ENGINEER IN WRITING. THE ENGINEER DISCLAIMS ALL LIABILITY ASSOCIATED WITH THE REUSE, ALTERATION OR MODIFICATION OF THE CONTENTS HEREIN.



SITE NAME:
 WESTON NORTH CT

SITE ADDRESS:
 237 GODFREY ROAD
 WESTON, CT 06883
 FAIRFIELD COUNTY

LOCATION CODE:
 468022

SHEET TITLE:
 STRUCTURAL DETAILS

SHEET # S-1 REVISION: 12

DIAGONAL BRACE SCHEDULE

ELEVATION (FT.)	DIAGONAL BRACE				BRACE BOLTS (A325)				STITCH BOLTS (A325)		
	EXISTING	PROPOSED (ASTM A36)	CUT LENGTH	QTY	BOLT X LENGTH	EDGE DISTANCE (IN)	GAGE DISTANCE (IN)	QTY	BOLT X LENGTH	GAGE DISTANCE (IN)	QTY
140 - 160	L2X2X1/8	L2X2X3/16	9' - 0"	24	5/8" DIA. X 1-3/4"	1	1 1/8	48	5/8" DIA. X 1-3/4"	1 1/8	12
160 - 180	L2X2X1/8	L2X2X3/16	7' - 6"	24	5/8" DIA. X 1-3/4"	1	1 1/8	48	5/8" DIA. X 1-3/4"	1 1/8	12

STRUCTURAL NOTES:

- DESIGN REQUIREMENTS ARE PER STATE BUILDING CODE AND APPLICABLE SUPPLEMENTS, INTERNATIONAL BUILDING CODE, EIA/TIA-222-G STRUCTURAL STANDARDS FOR STEEL ANTENNA, TOWERS AND ANTENNA SUPPORTING STRUCTURES.
- CONTRACTOR SHALL VERIFY ALL DIMENSIONS AND CONDITIONS IN THE FIELD PRIOR TO FABRICATION AND ERECTION OF ANY MATERIAL. ANY UNUSUAL CONDITIONS SHALL BE REPORTED TO THE ATTENTION OF THE CONSTRUCTION MANAGER AND ENGINEER OF RECORD.
- DESIGN AND CONSTRUCTION OF STRUCTURAL STEEL SHALL CONFORM TO THE AMERICAN INSTITUTE OF STEEL CONSTRUCTION "SPECIFICATION FOR THE DESIGN, FABRICATION AND ERECTION OF STRUCTURAL STEEL FOR BUILDINGS".
- STRUCTURAL STEEL SHALL CONFORM TO ASTM A992 (Fy=50 ksi), MISCELLANEOUS STEEL SHALL CONFORM TO ASTM A36 UNLESS OTHERWISE INDICATED.
- STEEL PIPE SHALL CONFORM TO ASTM A500 "COLD-FORMED WELDED & SEAMLESS CARBON STEEL STRUCTURAL TUBING", GRADE B, OR ASTM A53 PIPE STEEL BLACK AND HOT-DIPPED ZINC-COATED WELDED AND SEAMLESS TYPE E OR S, GRADE B. PIPE SIZES INDICATED ARE NOMINAL. ACTUAL OUTSIDE DIAMETER IS LARGER.
- STRUCTURAL CONNECTION BOLTS SHALL BE HIGH STRENGTH BOLTS (BEARING TYPE) AND CONFORM TO ASTM A325 TYPE-X "HIGH STRENGTH BOLTS FOR STRUCTURAL JOINTS, INCLUDING SUITABLE NUTS AND PLAIN HARDENED WASHERS". ALL BOLTS SHALL BE 3/4" DIA UON.
- ALL STEEL MATERIALS SHALL BE GALVANIZED AFTER FABRICATION IN ACCORDANCE WITH ASTM A123 "ZINC (HOT-DIP GALVANIZED) COATINGS ON IRON AND STEEL PRODUCTS", UNLESS OTHERWISE NOTED.
- ALL BOLTS, ANCHORS AND MISCELLANEOUS HARDWARE SHALL BE GALVANIZED IN ACCORDANCE WITH ASTM A153 "ZINC-COATING (HOT-DIP) ON IRON AND STEEL HARDWARE", UNLESS OTHERWISE NOTED.
- FIELD WELDS, DRILL HOLES, SAW CUTS AND ALL DAMAGED GALVANIZED SURFACES SHALL BE REPAIRED WITH AN ORGANIC ZINC REPAIR PAINT COMPLYING WITH REQUIREMENTS OF ASTM A780. GALVANIZING REPAIR PAINT SHALL HAVE 65 PERCENT ZINC BY WEIGHT, ZIRP BY DUNCAN GALVANIZING, GALVA BRIGHT PREMIUM BY CROWN OR EQUAL. THICKNESS OF APPLIED GALVANIZING REPAIR PAINT SHALL BE NOT LESS THAN 4 COATS (ALLOW TIME TO DRY BETWEEN COATS) WITH A RESULTING COATING THICKNESS REQUIRED BY ASTM A123 OR A153 AS APPLICABLE.
- CONTRACTOR SHALL COMPLY WITH AWS CODE FOR PROCEDURES, APPEARANCE AND QUALITY OF WELDS, AND FOR METHODS USED IN CORRECTING WELDING. ALL WELDERS AND WELDING PROCESSES SHALL BE QUALIFIED IN ACCORDANCE WITH AWS "STANDARD QUALIFICATION PROCEDURES". ALL WELDING SHALL BE DONE USING E70XX ELECTRODES AND WELDING SHALL CONFORM TO AISC AND D.I.I. WHERE FILLET WELD SIZES ARE NOT SHOWN, PROVIDE THE MINIMUM SIZE PER TABLE J2.4 IN THE AISC "STEEL CONSTRUCTION MANUAL". 14TH EDITION.
- INCORRECTLY FABRICATED, DAMAGED OR OTHERWISE MISFITTING OR NON-CONFORMING MATERIALS OR CONDITIONS SHALL BE REPORTED TO THE CONSTRUCTION MANAGER PRIOR TO REMEDIAL OR CORRECTIVE ACTION. ANY SUCH ACTION SHALL REQUIRE CONSTRUCTION MANAGER APPROVAL.
- UNISTRUT SHALL BE FORMED STEEL CHANNEL STRUT FRAMING AS MANUFACTURED BY UNISTRUT CORP., WAYNE, MI OR EQUAL. STRUT MEMBERS SHALL BE 1 5/8"x1 5/8"x12GA, UNLESS OTHERWISE NOTED, AND SHALL BE HOT-DIP GALVANIZED AFTER FABRICATION.
- EPOXY ANCHOR ASSEMBLY SHALL CONSIST OF STAINLESS STEEL ANCHOR ROD WITH NUTS & WASHERS. AN INTERNALLY THREADED INSERT, A SCREEN TUBE AND A EPOXY ADHESIVE. THE ANCHORING SYSTEM SHALL BE THE HILTI-HIT HY-270 AND OR HY-200 SYSTEMS (AS SPECIFIED IN DWG.) OR ENGINEERS APPROVED EQUAL.
- EXPANSION BOLTS SHALL CONFORM TO FEDERAL SPECIFICATION FF-S-325, GROUP II, TYPE 4, CLASS I, HILTI KWIK BOLT III OR APPROVED EQUAL. INSTALLATION SHALL BE IN ACCORDANCE WITH THE MANUFACTURER'S RECOMMENDATIONS.
- LUMBER SHALL COMPLY WITH THE REQUIREMENTS OF THE AMERICAN INSTITUTE OF TIMBER CONSTRUCTION AND THE NATIONAL FOREST PRODUCTS ASSOCIATION'S NATIONAL DESIGN SPECIFICATION FOR WOOD CONSTRUCTION. ALL LUMBER SHALL BE PRESSURE TREATED AND SHALL BE STRUCTURAL GRADE NO. 2 OR BETTER.
- WHERE ROOF PENETRATIONS ARE REQUIRED, THE CONTRACTOR SHALL CONTACT AND COORDINATE RELATED WORK WITH THE BUILDING OWNER AND THE EXISTING ROOF INSTALLER. WORK SHALL BE PERFORMED IN SUCH A MANNER AS TO NOT VOID THE EXISTING ROOF WARRANTY. ROOF SHALL BE WATERTIGHT.
- ALL FIBERGLASS MEMBERS USED ARE AS MANUFACTURED BY STRONGWELL COMPANY OF BRISTOL, VA 24203. ALL DESIGN CRITERIA FOR THESE MEMBERS IS BASED ON INFORMATION PROVIDED IN THE DESIGN MANUAL. ALL REQUIREMENTS PUBLISHED IN SAID MANUAL MUST BE STRICTLY ADHERED TO.
- NO MATERIALS TO BE ORDERED AND NO WORK TO BE COMPLETED UNTIL SHOP DRAWINGS HAVE BEEN REVIEWED AND APPROVED IN WRITING.
- SUBCONTRACTOR SHALL FIREPROOF ALL STEEL TO PRE-EXISTING CONDITIONS.

SPECIAL INSPECTIONS (REFERENCE IBC CHAPTER 17):

GENERAL: WHERE APPLICATION IS MADE FOR CONSTRUCTION, THE OWNER OR THE REGISTERED DESIGN PROFESSIONAL IN RESPONSIBLE CHARGE ACTING AS THE OWNER'S AGENT SHALL EMPLOY ONE OR MORE APPROVED AGENCIES TO PERFORM INSPECTIONS DURING CONSTRUCTION ON THE TYPES OF WORK LISTED IN THE INSPECTION CHECKLIST ABOVE.

THE REGISTERED DESIGN PROFESSIONAL IN RESPONSIBLE CHARGE AND ENGINEERS OF RECORD INVOLVED IN THE DESIGN OF THE PROJECT ARE PERMITTED TO ACT AS THE APPROVED AGENCY AND THEIR PERSONNEL ARE PERMITTED TO ACT AS THE SPECIAL INSPECTOR FOR THE WORK DESIGNED BY THEM, PROVIDED THOSE PERSONNEL MEET THE QUALIFICATION REQUIREMENTS.

STATEMENT OF SPECIAL INSPECTIONS: THE APPLICANT SHALL SUBMIT A STATEMENT OF SPECIAL INSPECTIONS PREPARED BY THE REGISTERED DESIGN PROFESSIONAL IN RESPONSIBLE CHARGE IN ACCORDANCE WITH SECTION 107.1 AS A CONDITION FOR ISSUANCE. THIS STATEMENT SHALL BE IN ACCORDANCE WITH SECTION 1705.

REPORT REQUIREMENT: SPECIAL INSPECTORS SHALL KEEP RECORDS OF INSPECTIONS. THE SPECIAL INSPECTOR SHALL FURNISH INSPECTION REPORTS TO THE BUILDING OFFICIAL, AND TO THE REGISTERED DESIGN PROFESSIONAL IN RESPONSIBLE CHARGE. REPORTS SHALL INDICATE THAT WORK INSPECTED WAS OR WAS NOT COMPLETED IN CONFORMANCE TO APPROVED CONSTRUCTION DOCUMENTS. DISCREPANCIES SHALL BE BROUGHT TO THE IMMEDIATE ATTENTION OF THE CONTRACTOR FOR CORRECTION. IF THEY ARE NOT CORRECTED, THE DISCREPANCIES SHALL BE BROUGHT TO THE ATTENTION OF THE BUILDING OFFICIAL AND TO THE REGISTERED DESIGN PROFESSIONAL IN RESPONSIBLE CHARGE. A FINAL REPORT DOCUMENTING REQUIRED SPECIAL INSPECTIONS SHALL BE SUBMITTED.

SPECIAL INSPECTION CHECKLIST	
BEFORE CONSTRUCTION	
CONSTRUCTION/INSTALLATION INSPECTIONS AND TESTING REQUIRED (COMPLETED BY ENGINEER OF RECORD)	REPORT ITEM
N/A	ENGINEER OF RECORD APPROVED SHOP DRAWINGS ¹
N/A	MATERIAL SPECIFICATIONS REPORT ²
N/A	FABRICATOR NDE INSPECTION
N/A	PACKING SLIPS ³
ADDITIONAL TESTING AND INSPECTIONS:	
DURING CONSTRUCTION	
CONSTRUCTION/INSTALLATION INSPECTIONS AND TESTING REQUIRED (COMPLETED BY ENGINEER OF RECORD)	REPORT ITEM
REQUIRED	STEEL INSPECTIONS
N/A	HIGH STRENGTH BOLT INSPECTIONS
N/A	HIGH WIND ZONE INSPECTIONS ⁴
N/A	FOUNDATION INSPECTIONS
N/A	CONCRETE COMP. STRENGTH, SLUMP TESTS AND PLACEMENT
N/A	POST INSTALLED ANCHOR VERIFICATION ⁵
N/A	GROUT VERIFICATION
N/A	CERTIFIED WELD INSPECTION
N/A	EARTHWORK: LIFT AND DENSITY
N/A	ON SITE COLD GALVANIZING VERIFICATION
N/A	GUY WIRE TENSION REPORT
ADDITIONAL TESTING AND INSPECTIONS:	
AFTER CONSTRUCTION	
CONSTRUCTION/INSTALLATION INSPECTIONS AND TESTING REQUIRED (COMPLETED BY ENGINEER OF RECORD)	REPORT ITEM
REQUIRED	MODIFICATION INSPECTOR REDLINE OR RECORD DRAWINGS ⁶
N/A	POST INSTALLED ANCHOR PULL-OUT TESTING
REQUIRED	PHOTOGRAPHS
ADDITIONAL TESTING AND INSPECTIONS:	

NOTES:

- REQUIRED FOR ANY NEW SHOP FABRICATED FRP OR STEEL.
- PROVIDED BY MANUFACTURER, REQUIRED IF HIGH STRENGTH BOLTS OR STEEL.
- PROVIDED BY GENERAL CONTRACTOR; PROOF OF MATERIALS.
- HIGH WIND ZONE INSPECTION CATB 120MPH OR CAT C,D 110MPH INSPECT FRAMING OF WALLS, ANCHORING, FASTENING SCHEDULE.
- ADHESIVE FOR REBAR AND ANCHORS SHALL HAVE BEEN TESTED IN ACCORDANCE WITH ACI 355.4 AND ICC-ES AC308 FOR CRACKED CONCRETE AND SEISMIC APPLICATIONS. DESIGN ADHESIVE BOND STRENGTH HAS BEEN BASED ON ACI 355.4 TEMPERATURE CATEGORY B WITH INSTALLATIONS INTO DRY HOLES DRILLED USING A CARBIDE BIT INTO CRACKED CONCRETE THAT HAS CURED FOR AT LEAST 21 DAYS. ADHESIVE ANCHORS REQUIRING CERTIFIED INSTALLATIONS SHALL BE INSTALLED BY A CERTIFIED ADHESIVE ANCHOR INSTALLER PER ACI 318-11 D.9.2.2. INSTALLATIONS REQUIRING CERTIFIED INSTALLERS SHALL BE INSPECTED PER ACI 318-11 D.8.2.4.
- AS REQUIRED; FOR ANY FIELD CHANGES TO THE ITEMS IN THIS TABLE.

NOTES:

- ALL CONNECTIONS TO BE SHOP WELDED & FIELD BOLTED USING 3/4"Ø A325-X BOLTS, UNLESS OTHERWISE NOTIFIED.
- SHOP DRAWING ENGINEER REVIEW & APPROVAL REQUIRED BEFORE ORDERING MATERIAL.
- SHOP DRAWING ENGINEER REVIEW & APPROVAL REQUIRED PRIOR TO STEEL FABRICATION.
- VERIFICATION OF EXISTING ROOF CONSTRUCTION IS REQUIRED PRIOR TO THE INSTALLATION OF THE ROOF PLATFORM. ENGINEER OF RECORD IS TO APPROVE EXISTING CONDITIONS IN ORDER TO MOVE FORWARD.
- CENTERLINE OF PROPOSED STEEL PLATFORM SUPPORT COLUMNS TO BE CENTRALLY LOCATED OVER THE EXISTING BUILDING COLUMNS.
- EXISTING BRICK MASONRY COLUMNS/BEARING TO BE REPAIRED/REPLACED AT ALL PROPOSED PLATFORM SUPPORT POINTS. ENGINEER OF RECORD TO REVIEW AND APPROVE.



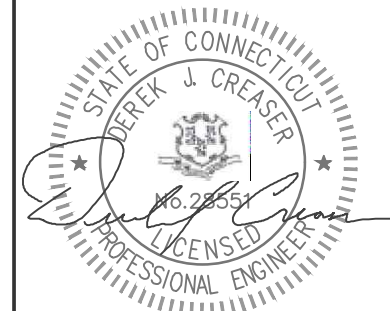
20 ALEXANDER DRIVE
WALLINGFORD, CT 06492



750 W CENTER ST, SUITE 301
WEST BRIDGEWATER, MA 02379
PHONE: 781.713.4725

REVISIONS		
12	05/30/24	REVISED PER 1A
11	02/12/24	REVISED PER MA
10	01/26/24	REVISED PER MA
9	12/27/23	REVISED PER COMMENTS
8	12/20/23	REVISED PER RFDS
7	11/27/23	REVISED FOR REVIEW
6	11/22/23	REVISED PER RFDS
5	09/15/22	ISSUED FOR CONSTRUCTION
4	07/26/22	REVISED FOR REVIEW
3	04/26/22	ISSUED FOR CONSTRUCTION
2	04/13/22	REVISED FOR REVIEW
1	02/23/22	REVISED FOR REVIEW
0	02/16/22	ISSUED FOR REVIEW
NO.	DATE	DESCRIPTION

DESIGNED BY: KL	APPROVED BY: DC
--------------------	--------------------



IT IS A VIOLATION OF LAW FOR ANY PERSON UNLESS THEY ARE ACTING UNDER THE DIRECTION OF A LICENSED PROFESSIONAL ENGINEER TO ALTER THIS DOCUMENT, UNLESS EXPLICITLY AGREED TO BY THE ENGINEER IN WRITING. THE ENGINEER DISCLAIMS ALL LIABILITY ASSOCIATED WITH THE REUSE, ALTERATION OR MODIFICATION OF THE CONTENTS HEREIN.



SITE NAME:
WESTON NORTH CT

SITE ADDRESS:
237 GODFREY ROAD
WESTON, CT 06883
FAIRFIELD COUNTY

LOCATION CODE:
468022

SHEET TITLE:
STRUCTURAL NOTES

SHEET #: SN-1 | REVISION: 12