

January 21, 2016

Melanie A. Bachman
Acting Executive Director
Connecticut Siting Council
10 Franklin Square
New Britain, CT 06051

Re: **Notice of Exempt Modification – Facility Modification
139 North Main Street, West Hartford, Connecticut**

Dear Ms. Bachman:

Cellco Partnership d/b/a Verizon Wireless (“Cellco”) currently maintains fifteen (15) wireless telecommunications antennas inside an existing clock tower structure at 139 North Main Street in West Hartford, Connecticut (the “Property”). Nine (9) of the antennas are located at the 69-foot level and six (6) of the antennas are located at the 78-foot level. The Property is owned by the American School for the Deaf. The clock tower is owned by Cellco. Cellco’s use of the clock tower structure was approved by the Council in 2013 (Docket No. 434). Cellco now intends to modify its facility by replacing nine (9) of its existing antennas with three (3) model SBNHH-1D65B, 700 MHz antennas, at the 69-foot level; three (3) model SBNHH-1D65B, 1900 MHz antennas at the 78-foot level; and three (3) model SBNHH-1D65B, 2100 MHz antennas, also at the 78-foot level inside the clock tower. Cellco also intends to replace three (3) of its existing remote radio heads (“RRHs”) and install six (6) new RRHs, all inside the clock tower. Included in Attachment 1 are specifications for Cellco’s replacement antennas and RRHs.

Please accept this letter as notification pursuant to R.C.S.A. § 16-50j-73, for construction that constitutes an exempt modification pursuant to R.C.S.A. § 16-50j-72(b)(2). In accordance with R.C.S.A. § 16-50j-73, a copy of this letter is being sent to Scott Slifka, Mayor for the Town of West Hartford. A copy of this letter is also being sent to the American School for the Deaf, the owner of the Property.

The planned modifications to the facility fall squarely within those activities explicitly provided for in R.C.S.A. § 16-50j-72(b)(2).

14458082-v1

Melanie A. Bachman
January 21, 2016
Page 2

1. The proposed modifications will not result in an increase in the height of the existing structure. Cellco's antennas and RRHs will be installed at the 69-foot and the 78-foot levels inside the existing clock tower structure.

2. The proposed modifications will not involve any change to ground-mounted equipment and, therefore, will not require the extension of the site boundary.

3. The proposed modifications will not increase noise levels at the facility by six decibels or more, or to levels that exceed state and local criteria.

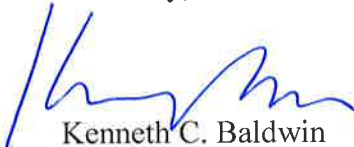
4. The operation of the replacement antennas will not increase radio frequency (RF) emissions at the facility to a level at or above the Federal Communications Commission (FCC) safety standard. Far Field tables for Cellco's modified facility are included in Attachment 2. For these purposes, the Far Field tables assume, in the worst case, that all of Cellco's antennas are located at the lower (69-foot) elevation.

5. The proposed modifications will not cause a change or alteration in the physical or environmental characteristics of the site.

6. The structure can support Cellco's proposed modifications. (See Structural Evaluation Letter included in Attachment 3).

For the foregoing reasons, Cellco respectfully submits that the proposed modifications to the above-referenced telecommunications facility constitutes an exempt modification under R.C.S.A. § 16-50j-72(b)(2).

Sincerely,



Kenneth C. Baldwin

Enclosures

Copy to:

Scott Slifka, West Hartford Mayor
American School for the Deaf
Tim Parks

ATTACHMENT 1



SBNHH-1D65B

Andrew® Tri-band Antenna, 698–896 and 2x 1695–2360 MHz, 65° horizontal beamwidth, internal RET. Both high bands share the same electrical tilt.

- Interleaved dipole technology providing for attractive, low wind load mechanical package

Electrical Specifications

Frequency Band, MHz	698–806	806–896	1695–1880	1850–1990	1920–2200	2300–2360
Gain, dBi	14.9	14.7	17.7	18.2	18.6	18.6
Beamwidth, Horizontal, degrees	68	66	69	66	63	58
Beamwidth, Vertical, degrees	12.1	10.7	5.6	5.2	5.0	4.5
Beam Tilt, degrees	0–14	0–14	0–7	0–7	0–7	0–7
USLS (First Lobe), dB	14	13	15	15	15	13
Front-to-Back Ratio at 180°, dB	27	29	28	28	28	27
CPR at Boresight, dB	20	23	20	20	17	21
CPR at Sector, dB	14	10	12	10	9	1
Isolation, dB	25	25	25	25	25	25
Isolation, Intersystem, dB	30	30	30	30	30	30
VSWR Return Loss, dB	1.5 14.0	1.5 14.0	1.5 14.0	1.5 14.0	1.5 14.0	1.5 14.0
PIM, 3rd Order, 2 x 20 W, dBc	-153	-153	-153	-153	-153	-153
Input Power per Port, maximum, watts	350	350	350	350	350	300
Polarization	±45°	±45°	±45°	±45°	±45°	±45°
Impedance	50 ohm	50 ohm	50 ohm	50 ohm	50 ohm	50 ohm

Electrical Specifications, BASTA*

Frequency Band, MHz	698–806	806–896	1695–1880	1850–1990	1920–2200	2300–2360
Gain by all Beam Tilts, average, dBi	14.5	14.3	17.4	17.9	18.2	18.3
Gain by all Beam Tilts Tolerance, dB	±0.5	±0.8	±0.4	±0.3	±0.5	±0.3
Gain by Beam Tilt, average, dBi	0° 14.6	0° 14.5	0° 17.4	0° 17.8	0° 18.1	0° 18.2
	7° 14.6	7° 14.4	3° 17.5	3° 17.9	3° 18.3	3° 18.4
	14° 14.2	14° 13.6	7° 17.4	7° 17.9	7° 18.2	7° 18.4
Beamwidth, Horizontal Tolerance, degrees	±2.2	±3.4	±2	±4.6	±5.7	±4.3
Beamwidth, Vertical Tolerance, degrees	±0.8	±1	±0.3	±0.2	±0.3	±0.2
USLS, beampeak to 20° above beampeak, dB	16	14	16	16	16	15
Front-to-Back Total Power at 180° ± 30°, dB	25	26	27	26	26	26
CPR at Boresight, dB	22	23	21	20	20	22
CPR at Sector, dB	13	11	16	12	11	4

* CommScope® supports NGMN recommendations on Base Station Antenna Standards (BASTA). To learn more about the benefits of BASTA, download the [whitepaper Time to Raise the Bar on BSAs](#).

General Specifications

Antenna Brand	Andrew®
Antenna Type	DualPol® multiband with internal RET
Band	Multiband
Brand	DualPol® Teletilt®
Operating Frequency Band	1695 – 2360 MHz 698 – 896 MHz
Performance Note	Outdoor usage

SBNHH-1D65B

POWERED BY



Mechanical Specifications

Color	Light gray
Lightning Protection	dc Ground
Radiator Material	Aluminum Low loss circuit board
Radome Material	Fiberglass, UV resistant
Reflector Material	Aluminum
RF Connector Interface	7-16 DIN Female
RF Connector Location	Bottom
RF Connector Quantity, total	6
Wind Loading, maximum	617.7 N @ 150 km/h 138.9 lbf @ 150 km/h
Wind Speed, maximum	241 km/h 150 mph

Dimensions

Depth	180.0 mm 7.1 in
Length	1851.0 mm 72.9 in
Width	301.0 mm 11.9 in
Net Weight	18.4 kg 40.6 lb

Remote Electrical Tilt (RET) Information

Input Voltage	10–30 Vdc
Power Consumption, idle state, maximum	2.0 W
Power Consumption, normal conditions, maximum	13.0 W
Protocol	3GPP/AISG 2.0 (Multi-RET)
RET Interface	8-pin DIN Female 8-pin DIN Male
RET Interface, quantity	1 female 1 male
RET System	Teletilt®

Packed Dimensions

Depth	299.0 mm 11.8 in
Length	1970.0 mm 77.6 in
Width	409.0 mm 16.1 in
Shipping Weight	31.0 kg 68.3 lb

Regulatory Compliance/Certifications

Agency	Classification
RoHS 2011/65/EU	Compliant by Exemption
China RoHS SJ/T 11364-2006	Above Maximum Concentration Value (MCV)
ISO 9001:2008	Designed, manufactured and/or distributed under this quality management system



Included Products

SBNHH-1D65B

POWERED BY



BSAMNT-1 — Wide Profile Antenna Downtilt Mounting Kit for 2.4 - 4.5 in (60 - 115 mm) OD round members. Kit contains one scissor top bracket set and one bottom bracket set.

* **Footnotes**

Performance Note Severe environmental conditions may degrade optimum performance

ALCATEL-LUCENT B13 RRH4X30-4R

Alcatel-Lucent B13 Remote Radio Head 4x30-4R is the newest addition of Remote Radio Head to the extended product line of Alcatel-Lucent's distributed Base Station solutions, aimed at facilitating smooth RF site acquisition and related civil engineering.

Supporting 2Tx/4Tx MIMO and 4-way Rx diversity, Alcatel-Lucent B13 RRH4x30-4R allows operators to have a compact radio solution to deploy LTE in the 700U band (700 MHz, 3GPP band 13), providing them with the means to achieve high capacity, high quality and high coverage with minimum site requirements.

The Alcatel-Lucent B13 RRH4x30-4R product has four transmit RF paths, offering the possibility to **select, via software only, 2Tx or 4Tx MIMO configurations** with either 2x60 W or 4x30 W RF output power. It supports also 4-way Rx diversity and up to 10MHz instantaneous bandwidth.

The Alcatel-Lucent B13 RRH4x30-4R is a near zero-footprint solution and operates noise free, simplifying negotiations with site property owners and minimizing environmental impacts.

Its compactness and slim design makes the Alcatel-Lucent B13 RRH4x30-4R easy to install close to the antenna: operators can therefore locate this Remote Radio Head where RF design conditions are deemed ideal, minimizing trade-offs between available sites and RF optimum sites, together with reducing the RF feeder needs and installation costs.

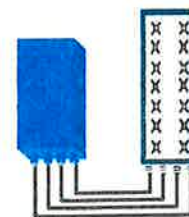


FEATURES

- Supporting LTE in 700 MHz band (700U, 3GPP band 13)
- LTE 2Tx or 4Tx MIMO (SW switchable)
- Output power: Up to 2x60W or 4x30W
- 10MHz LTE carrier with 4Rx Diversity
- Convection-cooled (fan-less)
- Supports AISG 2.0 ALD devices (RET, TMA) through RS485 or RF ports

BENEFITS

- Compact to reduce additional footprint when adding LTE in 700U band
- MIMO scheme operation selection (2Tx or 4Tx) by software only
- Improves downlink spectral efficiency through MIMO4
- Increases LTE coverage thanks to 4Rx diversity capability and best in class Rx sensitivity
- Flexible mounting options: Pole or Wall



4x30W with 4T4R
or
2x60W with 2T4R

Can be switched between modes via SW w/o site visit

TECHNICAL SPECIFICATIONS

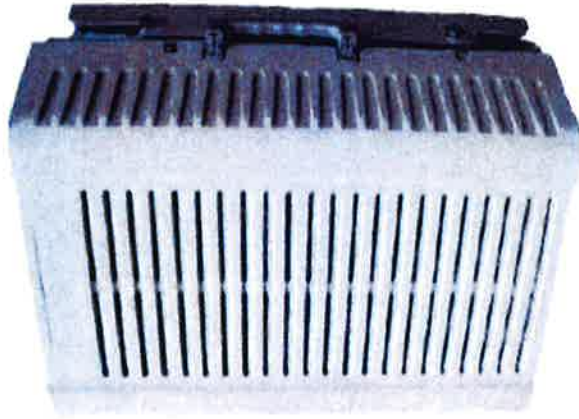
Features & performance	
Number of TX/RX paths	4 duplexed (either 4T4R or 2T4R by SW)
Frequency band	U700 (C) (3GPP bands 13): DL: 746 - 756 MHz / UL: 777 - 787 MHz
Instantaneous bandwidth - #carriers	10MHz - 1 LTE carrier (in 10MHz occupied bandwidth)
LTE carrier bandwidth	10 MHz
RF output power	2x60W or 4x30W (by SW)
Noise figure - RX Diversity scheme	2 dB typ. (<2.5 dB max) - 2 or 4 way Rx diversity
Sizes (HxWxD) in mm (in.)	550 x 305 x 230 (21.6" x 12.0" x 9") (with solar shield)
Volume in L	38 (with solar shield)
Weight in kg (lb) (w/o mounting HW)	26 (57.2) (with solar shield)
DC voltage range	-40.5 to -57V at full performance, -38 to -57V with relaxation on power consumption
DC power consumption	550W typical @100% RF load (in 2Tx or 4TX mode)
Environmental conditions	-40°C (-40°F) / +55°C (+131°F)
Wind load (@150km/h or 93mph)	IP65 Frontal: <200N / Lateral : <150N
Antenna ports	4 ports 7/16 DIN female (50 ohms) VSWR < 1.5
CPRI ports	2 CPRI ports (HW ready for Rate7, 9.8 Gbps) SFP single mode dual fiber
AISG interfaces	1 AISG2.0 output (RS485) Integrated Smart Bias Tees (x2)
Misc. Interfaces	4 external alarms (1 connector) - 4 RF Tx & 4 RF Rx monitor ports - 1 DC connector (2 pins)
Installation conditions	Pole and wall mounting
Regulatory compliance	3GPP 36.141 / 3GPP 36.113 / GR-1089-CORE / GR-3108-CORE / UL 60950-1 / FCC Part 27

www.alcatel-lucent.com Alcatel, Lucent, Alcatel-Lucent and the Alcatel-Lucent logo are trademarks of Alcatel-Lucent. All other trademarks are the property of their respective owners. The information presented is subject to change without notice. Alcatel-Lucent assumes no responsibility for inaccuracies contained herein. Copyright © 2014 Alcatel-Lucent. All Rights Reserved

PCS RF MODULES

RRH1900 2X60 - HW CHARACTERISTICS

LA6.0.1/13.3



RRH2x60	
RF Output Power	2x60W
Instantaneous Bandwidth	20MHz
Transmitter	2 TX
Receiver	2 Branch RX – LA6.0.1 4 Branch RX – LR13.3
Features	AISG 2.0 for RET/TMA Internal Smart Bias-T
Power	-48VDC
CPRI Ports	2 CPRI Rate 3 Ports
External Alarms	4 External User Alarms
Monitor Ports	TX
Environmental	GR487 Compliance
RF Connectors	7/16 DIN (top mounted)

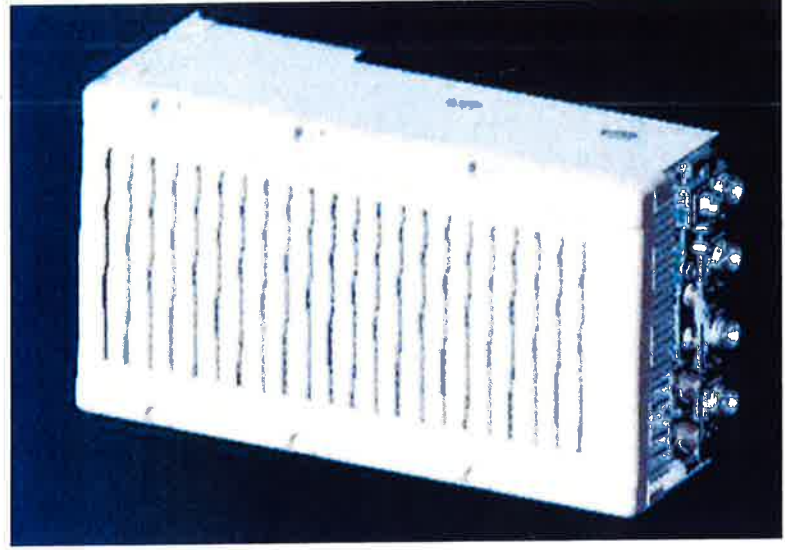
** Not a Verizon Wireless deployed product

ALCATEL-LUCENT – CONFIDENTIAL – SOLELY FOR AUTHORIZED PERSONS HAVING A NEED TO KNOW – PROPRIETARY – USE PURSUANT TO COMPANY INSTRUCTION

NEW PCS RF MODULES FOR VZW RRH2X60 - HW CHARACTERISTICS

LR14.3

	RRH2x60
RF Output Power	2x60W (4x30W HW Ready)
Instantaneous Bandwidth	60MHz
Target Reliability (Annual Return Rate)	<2%
Receiver	4 Branch Rx
Features	AISG 2.0 for RET/TMA
Power	-48VDC Internal Smart Bias-T
CPRI Ports	2 CPRI Rate 5 Ports
External Alarms	4 External User Alarms
Monitor Ports	TX, RX
Environmental	GR487 Compliance
RF Connectors	7/16 DIN (downward facing)
Dimensions	22"(h) x 12"(w) x 9.4" (d)**
Weight	55lb**

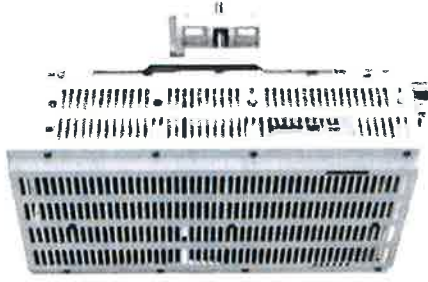


** - Includes solar shield but not mounting brackets (8 lbs.)



ALCATEL-LUCENT - CONFIDENTIAL - SOLELY FOR AUTHORIZED PERSONS HAVING A NEED TO KNOW - PROPRIETARY - USE PURSUANT TO COMPANY INSTRUCTION

B66A RRH 4X45 - PHYSICAL CHARACTERISTICS- TARGET 15.1



B4 RRHx45-4R (AWS-Extension Band)	
Frequency Band	LR15.1 – B4 / LR16.1 B66 (AWS 1 and 3 only)
RF Output Power	2x90W/4x45W (SW configurable)
Operational range	2110-2180 MHz, DL/ 1710-1780 MHz UL
Instantaneous Bandwidth	70MHz
Configuration (HW readiness)	LTE: 2T2R, 2T4R, 4T4R
Carrier Bandwidths	5, 10, 15 and 20 MHz
Interfaces	2x CPRI Rate 7 Ports Antenna Connectors 4.3-10
AISG Support	AISG 2.0 for RET Internal Smart Bias T
Monitor Ports	NA (Spec An to replace ports)
Environmental	GR487 Compliance / GR3178 Compliance (with exceptions)
Mounting options	Pole/Wall
Connectors location	All bottom
External Alarms	4
Annual Return Rate (Target)	<2%
Operating Temperature	-40 C to +55 C (without solar load)

- Commercial Product Will include B66 support of AWS 1 and 3.
- Lower AWS 3 UL Not in 3GPP Band 66 Definition

Physical Dimensions – Not to Exceed		
	W/O Solar Shield	With Solar Shield
Dimensions HxWxD	H = 26in (H=660mm) W = 11.4in (W=290mm) D = 5.9in (D=150mm)	H = 26.6in (H=675mm) W = 12in (W=304mm) D = 6.8in (D=173mm)
Volume	29l	35.5l
Weight		64lbs / 29kg



ATTACHMENT 2

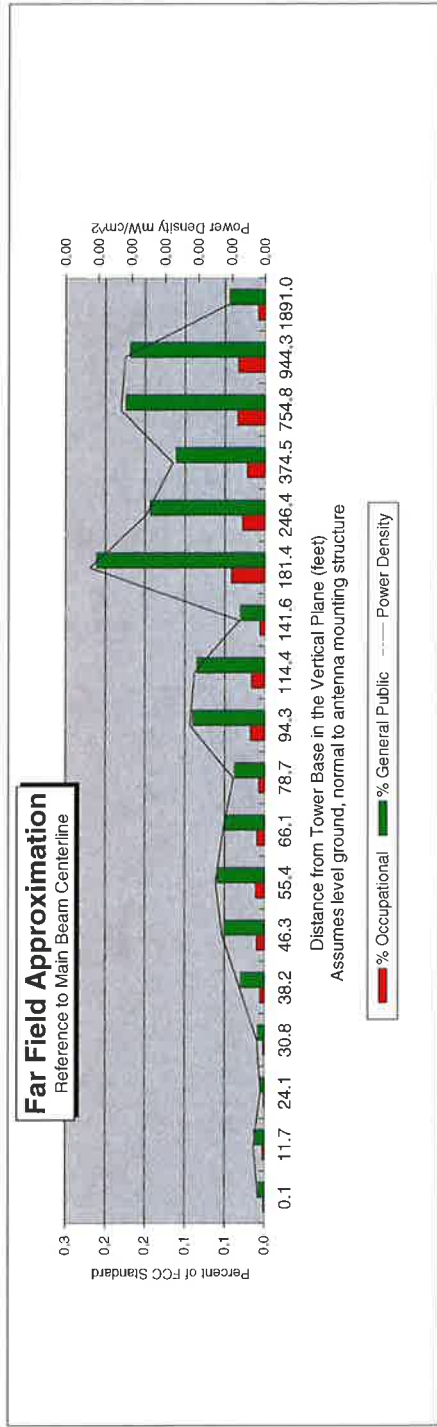
Far Field Approximation
with downtilt variation

**Estimated Radiated Emission
Single Emitter Far Field Model
Dipole / Wire/ Yagi Antenna Types**



Location:	W Hartford W, CT
Site #:	8-0130
Date:	01/20/16
Name:	Mark Brauer
File Name:	W Hartford W, CT - FF Power

Operating Freq. (MHz)	746.0
Antenna Height (ft):	69.0
Antenna Gain (dBi):	14.8
Antenna Size (in.):	72.0
Downtilt (degrees):	0.0
Feedline Loss (dB):	0.0
Power @ J4 (w):	120.0
Number of Channels	1



Calc Angle	90.0	80.0	70.0	65.0	60.0	55.0	50.0	45.0	40.0	35.0	30.0	25.0	20.0	15.0	10.0	5.0	4.0	2.0
Solve for r, dx to antenna	66.0	67.0	70.3	72.8	76.2	80.6	86.2	93.4	102.7	115.1	132.1	156.2	193.1	255.1	380.3	757.6	946.6	1892.1
Distance from Antenna Structure Base in Horizontal plane	0.1	11.7	24.1	30.8	38.2	46.3	55.4	66.1	78.7	94.3	114.4	141.6	181.4	246.4	374.5	754.8	944.3	1891.0
Angle from Main Beam. (reference to horizontal plane)	90	80	70	65	60	55	50	45	40	35	30	25	20	15	10	5	4	2
dB down from centerline (referenced to centerline)	36.76	34.35	38.52	35.34	29.54	26.8	25.59	25.63	25.99	21.21	20.29	23.24	13.03	12.3	9.92	2	0.2	0
Reflection Coefficient (1 to 4, 2.56 typical)	2.56	2.56	2.56	2.56	2.56	2.56	2.56	2.56	2.56	2.56	2.56	2.56	2.56	2.56	2.56	2.56	2.56	2.56
Power Density (mW/cm²)	0.00	0.00	0.00	0.00	0.00	0.00	0.00	0.00	0.00	0.00	0.00	0.00	0.00	0.00	0.00	0.00	0.00	0.00
Percent of Occupational Standard	0.0	0.0	0.0	0.0	0.0	0.0	0.0	0.0	0.0	0.0	0.0	0.0	0.0	0.0	0.0	0.0	0.0	0.0
Percent of General Population Standard	0.0	0.0	0.0	0.0	0.0	0.1	0.1	0.0	0.0	0.1	0.1	0.0	0.2	0.1	0.1	0.2	0.2	0.0

Distance in feet below:

Antenna Type: SBNHH-1D65B
Max%: 0.21%

- Instructions:
- 1) Fill in Site Location, Site number, Date, Name of Person Responsible for Date, and enter File Name to be saved as.
 - 2) References to J4 refer to a point where the transmission line exits the equipment shelter and proceeds to the antenna(s). There is typically a connector located here where power measurements are made.
 - 3) Enter Antenna Height (in feet to bottom of antenna), Antenna Gain (expressed as dBi, add 2.17 to dBi to obtain dBd), Antenna Size (vertical size in inches), Downtilt (in Degrees, enter zero if none), Feedline loss from J4 to Antenna, and J4 Power Density (mW/cm²).
 - 4) From manufacturer's plots, or data sheet, input Angle from mainbeam and dB below mainbeam centerline.
 - 5) Enter Reflection coefficient (2.56 would be typical, 1 for free space)
 - 6) Spreadsheet calculates actual power density, then relates as Occupational or General Population percentage of FCC Standard.
 - 7) An odd distance may be entered in the rightmost column of the lower table.

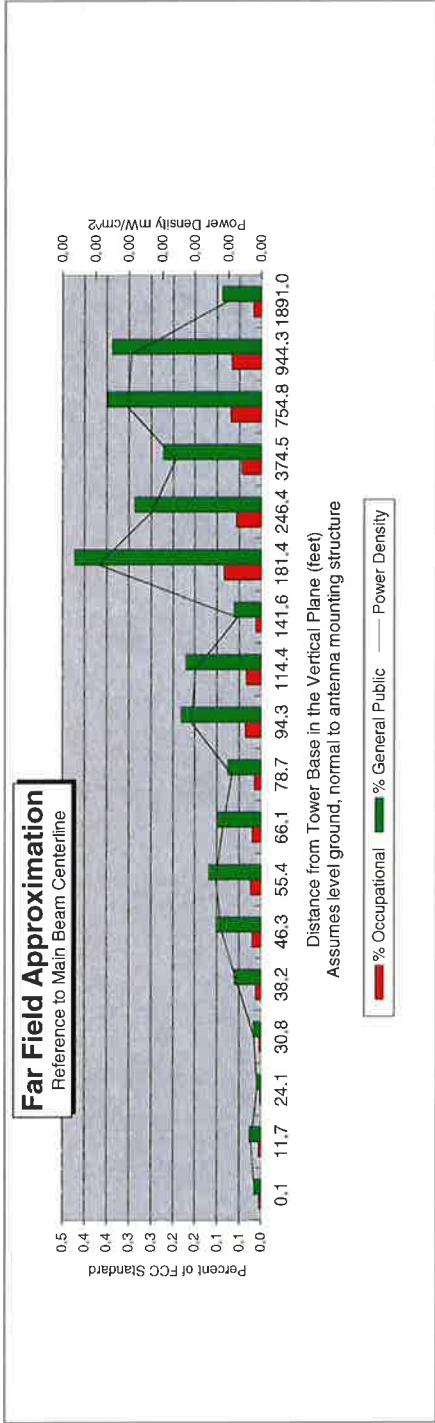
Far Field Approximation
with downtilt variation

Estimated Radiated Emission
Single Emitter Far Field Model
Dipole / Wire/ Yagi Antenna Types



Location:	W Hartford W, CT
Site #:	8-0130
Date:	01/19/16
Name:	Mark Brauer
File Name:	W Hartford W, CT - FF Power

Operating Freq. (MHz)	869.0
Antenna Height (ft):	69.0
Antenna Gain (dBi):	16.7
Antenna Size (in.):	72.0
Downtilt (degrees):	0.0
Feedline Loss (dB):	0.0
Power @ J4 (w):	180.0
Number of Channels	9



Distance in feet below:

Calc Angle	90.0	80.0	70.0	65.0	60.0	55.0	50.0	45.0	40.0	35.0	30.0	25.0	20.0	15.0	10.0	5.0	4.0	2.0
Solve for r, dx to antenna	66.0	67.0	70.3	72.8	76.2	80.6	86.2	93.4	102.7	115.1	132.1	156.2	193.1	255.1	380.3	757.6	946.6	1892.1
Distance from Antenna Structure Base in Horizontal plane	0.1	11.7	24.1	30.8	38.2	46.3	55.4	66.1	78.7	94.3	114.4	141.6	181.4	246.4	374.5	754.8	944.3	1891.0
Angle from Main Beam (reference to horizontal plane)	90	80	70	65	60	55	50	45	40	35	30	25	20	15	10	5	4	2
dB down from centerline (referenced to centerline)	36.76	34.35	38.52	35.34	29.54	26.8	25.59	25.63	25.99	21.21	20.29	23.24	13.03	12.3	9.92	2	0.2	0
Reflection Coefficient (1 to 4, 2.56 typical)	2.56	2.56	2.56	2.56	2.56	2.56	2.56	2.56	2.56	2.56	2.56	2.56	2.56	2.56	2.56	2.56	2.56	2.56
Power Density (mW/cm ²)	0.00	0.00	0.00	0.00	0.00	0.00	0.00	0.00	0.00	0.00	0.00	0.00	0.00	0.00	0.00	0.00	0.00	0.00
Percent of Occupational Standard	0.0	0.0	0.0	0.0	0.0	0.0	0.0	0.0	0.0	0.0	0.0	0.0	0.0	0.1	0.1	0.1	0.1	0.0
Percent of General Population Standard	0.0	0.0	0.0	0.0	0.1	0.1	0.1	0.1	0.1	0.1	0.2	0.2	0.1	0.3	0.2	0.3	0.3	0.1

Antenna Type LPA-80063-6CF
Max% 0.42%

Instructions:

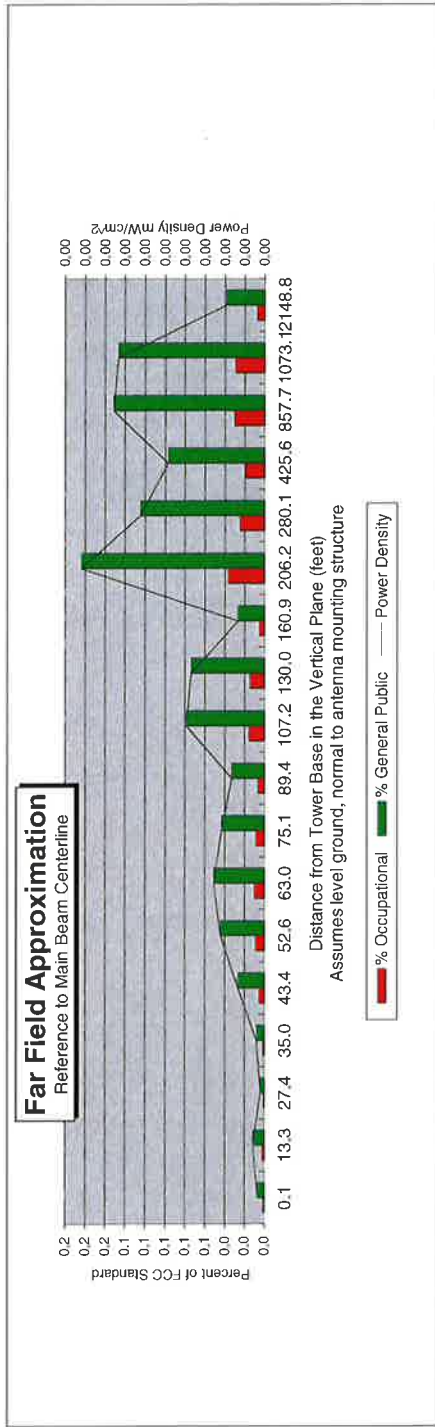
- 1) Fill in Site Location, Site number, Date, Name of Person Responsible for Date, and enter File Name to be saved as.
- 2) References to J4 refer to a point where the transmission line exits the equipment shelter and proceeds to the antenna(s). There is typically a connector located here where power measurements are made.
- 3) Enter Antenna Height (in feet to bottom of antenna), Antenna Gain (expressed as dBi, add 2.17 to dBd to obtain dBi), Antenna Size (vertical size in inches), Downtilt (in Degrees, enter zero if none), Feedline loss from J4 to Antenna, and J4 Pov
- 4) From manufacturer's plots, or data sheet, input Angle from mainbeam and dB below mainbeam centerline.
- 5) Enter Reflection coefficient (2.56 would be typical, 1 for free space)
- 6) Spreadsheet calculates actual power density, then relates as Occupational or General Population percentage of FCC Standard.
- 7) An odd distance may be entered in the rightmost column of the lower table.

Far Field Approximation
with downtilt variation

Estimated Radiated Emission
Single Emitter Far Field Model
Dipole / Wire/ Yagi Antenna Types



Location:	W Hartford W, CT
Site #:	8-0130
Date:	01/20/16
Name:	Mark Brauer
File Name:	W Hartford W, CT - FF Power
Operating Freq. (MHz)	1970.0
Antenna Height (ft):	78.0
Antenna Gain (dBi):	18.3
Antenna Size (in.):	72.0
Downtilt (degrees):	0.0
Feedline Loss (dB):	0.0
Power @ J4 (w):	120.0
Number of Channels	1



Distance in feet below:

Calc Angle	90.0	80.0	70.0	60.0	55.0	50.0	45.0	40.0	35.0	30.0	25.0	20.0	15.0	10.0	5.0	4.0	2.0	
Solve for r, dx to antenna	75.0	76.2	79.8	82.8	86.6	91.6	97.9	106.1	116.7	130.8	150.1	177.5	219.4	289.9	432.1	861.0	1075.7	2150.1
Distance from Antenna Structure Base in Horizontal plane	0.1	13.3	27.4	35.0	43.4	52.6	63.0	75.1	89.4	107.2	130.0	160.9	206.2	280.1	425.6	857.7	1073.1	2148.8
Angle from Main Beam (reference to horizontal plane)	90	80	70	65	60	55	50	45	40	35	30	25	20	15	10	5	4	2
dB down from centerline (referenced to centerline)	36.76	34.35	38.52	35.34	29.54	26.8	25.59	25.63	25.99	21.21	20.29	23.24	13.03	12.3	9.92	2	0.2	0
Reflection Coefficient (1 to 4, 2.56 typical)	2.56	2.56	2.56	2.56	2.56	2.56	2.56	2.56	2.56	2.56	2.56	2.56	2.56	2.56	2.56	2.56	2.56	2.56
Power Density (mW/cm²)	0.00	0.00	0.00	0.00	0.00	0.00	0.00	0.00	0.00	0.00	0.00	0.00	0.00	0.00	0.00	0.00	0.00	0.00
Percent of Occupational Standard	0.0	0.0	0.0	0.0	0.0	0.0	0.0	0.0	0.0	0.0	0.0	0.0	0.0	0.0	0.0	0.0	0.0	0.0
Percent of General Population Standard	0.0	0.0	0.0	0.0	0.0	0.1	0.0	0.0	0.0	0.1	0.1	0.0	0.2	0.1	0.1	0.2	0.1	0.0

Antenna Type: SBNHH-1D65B
Max%: 0.18%

Instructions:

- 1) Fill in Site Location, Site number, Date, Name of Person Responsible for Date, and enter File Name to be saved as.
- 2) References to J4 refer to a point where the transmission line exits the equipment shelter and proceeds to the antenna(s). There is typically a connector located here where power measurements are made.
- 3) Enter Antenna Height (in feet to bottom of antenna), Antenna Gain (expressed as dBi, add 2.17 to dBd to obtain dBi), Antenna Size (vertical size in inches), Downtilt (in Degrees, enter zero if none), Feedline loss from J4 to Antenna, and J4 Power.
- 4) From manufacturer's plots, or data sheet, input Angle from mainbeam and dB below mainbeam centerline.
- 5) Enter Reflection coefficient (2.56 would be typical, 1 for free space)
- 6) Spreadsheet calculates actual power density, then relates as Occupational or General Population percentage of FCC Standard.
- 7) An odd distance may be entered in the rightmost column of the lower table.

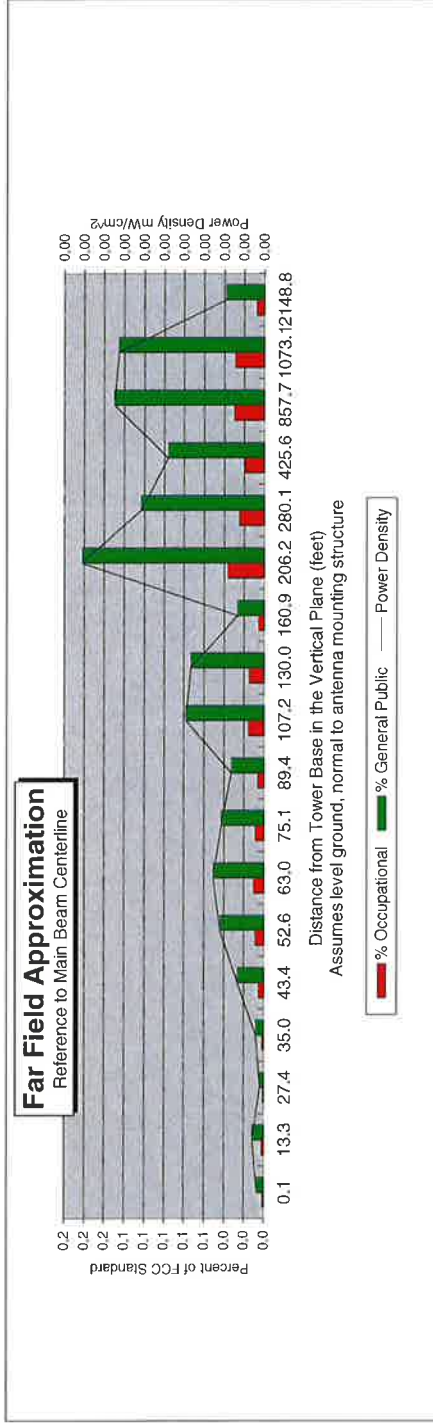
Far Field Approximation
with downtilt variation

Estimated Radiated Emission
Single Emitter Far Field Model
Dipole / Wire/ Yagi Antenna Types



Location:	W Hartford W, CT
Site #:	8-0130
Date:	01/20/16
Name:	Mark Brauer
File Name:	W Hartford W, CT - FF Power

Operating Freq. (MHz)	2145.0
Antenna Height (ft):	78.0
Antenna Gain (dBi):	18.3
Antenna Size (in.):	72.0
Downtilt (degrees):	0.0
Feedline Loss (dB):	0.0
Power @ J4 (w):	120.0
Number of Channels	1



Calc Angle	90.0	80.0	70.0	60.0	55.0	50.0	45.0	40.0	35.0	30.0	25.0	20.0	15.0	10.0	5.0	4.0	2.0	
Solve for r. dx to antenna	75.0	76.2	79.8	82.8	86.6	91.6	97.9	106.1	116.7	130.8	150.1	177.5	219.4	289.9	432.1	861.0	1075.7	2150.1
Distance from Antenna Structure Base in Horizontal plane	0.1	13.3	27.4	35.0	43.4	52.6	63.0	75.1	89.4	107.2	130.0	160.9	206.2	280.1	425.6	857.7	1073.1	2148.8
Angle from Main Beam (reference to horizontal plane)	90	80	70	65	60	55	50	45	40	35	30	25	20	15	10	5	4	2
dB down from centerline (referenced to centerline)	36.76	34.35	38.52	35.34	29.54	26.8	25.59	25.63	25.99	21.21	20.29	23.24	13.03	12.3	9.92	2	0.2	0
Reflection Coefficient (1 to 4, 2.56 typical)	2.56	2.56	2.56	2.56	2.56	2.56	2.56	2.56	2.56	2.56	2.56	2.56	2.56	2.56	2.56	2.56	2.56	2.56
Power Density (mW/cm²)	0.00	0.00	0.00	0.00	0.00	0.00	0.00	0.00	0.00	0.00	0.00	0.00	0.00	0.00	0.00	0.00	0.00	0.00
Percent of Occupational Standard	0.0	0.0	0.0	0.0	0.0	0.0	0.0	0.0	0.0	0.0	0.0	0.0	0.0	0.0	0.0	0.0	0.0	0.0
Percent of General Population Standard	0.0	0.0	0.0	0.0	0.0	0.1	0.0	0.0	0.1	0.1	0.0	0.2	0.1	0.1	0.1	0.1	0.1	0.0

Distance in feet below:

Antenna Type: SBNHH-1D65B
Max%: 0.18%

Instructions:

- 1) Fill in Site Location, Site number, Date, Name of Person Responsible for Date, and enter File Name to be saved as.
- 2) References to J4 refer to a point where the transmission line exits the equipment shelter and proceeds to the antenna(s). There is typically a connector located here where power measurements are made.
- 3) Enter Antenna Height (in feet to bottom of antenna), Antenna Gain (expressed as dBi, add 2.17 to dBd to obtain dBi), Antenna Size (vertical size in inches), Downtilt (in Degrees, enter zero if none), Feedline loss from J4 to Antenna, and J4 Power Density.
- 4) From manufacturer's plots, or data sheet, input Angle from mainbeam and dB below mainbeam centerline.
- 5) Enter Reflection coefficient (2.56 would be typical, 1 for free space)
- 6) Spreadsheet calculates actual power density, then relates as Occupational or General Population percentage of FCC Standard.
- 7) An odd distance may be entered in the rightmost column of the lower table.

ATTACHMENT 3

January 8, 2016

Mr. Aleksey Tyurin
Verizon Wireless
99 East River Drive
East Hartford, CT 06108

*Re: Structural Evaluation Letter ~ Antenna Upgrade
Verizon Wireless Site Ref ~ West Hartford West
139 North Main Street
West Hartford, CT 06107*

Centek Project No. 15001.129

Dear Mr. Tyurin,

Centek Engineering, Inc. has reviewed the proposed Verizon Wireless antenna upgrade at the above referenced site. The purpose of the review is to determine the structural adequacy of the existing 90-ft tall host building to support the proposed modified antenna configuration. The existing antenna installation consists of three (3) antenna sectors mounted in two (2) arrays within the existing clock tower. The review considered the effects of wind load, dead load, ice load and seismic forces in accordance with the 2005 Connecticut State Building Code as amended by the 2009 Connecticut State Supplement.

The existing, proposed, and future Verizon Wireless loads considered in this analysis consist of the following:

- **Verizon (Existing to Remain):**
Antennas: Six (6) Antel LPA-80063-6CF panel antennas mounted within the clock tower with a RAD center elevation of 69-ft +/- AGL.
Appurtenances: Two (2) DB-T1-6Z-8AB-0Z distribution boxes mounted within the clock tower.
Cables: Eighteen (18) 1-5/8" dia. coax cables and two (2) 1-1/4-in dia. Hybriflex Fiber jumper cables routed within the existing cable tray.
- **Verizon (Existing to Remove):**
Antennas: Six (6) Antel BXA-171063-12CF panel antennas mounted within the clock tower with a RAD center elevation of 78-ft +/- AGL. Three (3) Antel BXA-70063-6CF panel antennas mounted within the clock tower with a RAD center elevation of 69-ft +/- AGL.
Appurtenances: Three (3) Alcatel Lucent RRH2x40-AWS remote radio heads mounted within the clock tower
- **Verizon (Proposed):**
Antennas: Six (6) Andrew SBNHH-1D65B panel antennas mounted within the clock tower with a RAD center elevation of 78-ft +/- AGL. Three (3) Andrew SBNHH-1D65B panel antennas mounted within the clock tower with a RAD center elevation of 69-ft +/- AGL.
Appurtenances: Three (3) Alcatel Lucent RRH4x30/2x60-LTE remote radio heads, three (3) Alcatel Lucent RRH4x45/2x90-AWS remote radio heads and three (3) Alcatel Lucent RRH2x90-PCS remote radio heads mounted within the clock tower.

CEN TEK engineering, INC.
Structural Evaluation Letter
Verizon Wireless ~ West Hartford West
139 North Main Street
West Hartford, CT 06107

The proposed antenna installation meets the requirements of the 2005 Connecticut State Building Code considering the basic wind speed (3-second gust) of 95 mph as required in Appendix K of the Connecticut supplement per Table 1609.3.1 considering Exposure Category B. Our findings are based on the assumption that the hosting structure, all structural members and appurtenances were properly designed, detailed, fabricated, installed and have been properly maintained since erection.

In conclusion, the proposed Verizon antenna upgrade will not negatively impact the structural integrity of the existing antenna support structure or host building. If there are any questions regarding this matter, please feel free to call.

Respectfully Submitted by:


Timothy J. Lynn, PE
Structural Engineer

