

Dominion Nuclear Connecticut, Inc.  
Rope Ferry Rd., Waterford, CT 06385

Mailing Address: P.O. Box 128  
Waterford, CT 06385

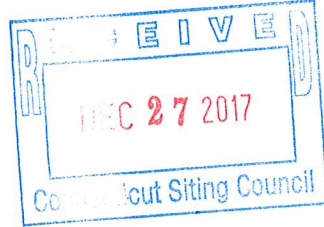
dom.com



**EM-DNC-152-171227e**

Serial No. RA-17-033  
MPS NSSL/GJC R0

Melanie A. Bachman  
Acting Executive Director  
Connecticut Siting Council  
10 Franklin Square  
New Britain, CT 06051



**DEC 21 2017**

**Re: Dominion Energy Nuclear Connecticut, Inc. – Notice of Exempt Modification  
Millstone Power Station- Installation of Spare Transformer Storage Pads and Oil  
Containment Berm for New Spare Transformers**

Dear Ms. Bachman:

As you are aware, Dominion Energy Nuclear Connecticut, Inc. (DENC) (formerly known as Dominion Nuclear Connecticut, Inc.), owns and operates the Millstone Power Station (MPS) in Waterford, Connecticut. In an effort to improve overall station reliability, DENC plans to purchase a new spare Reserve Station Service Transformer (RSST) for MPS Unit 2 (MPS2). In addition, DENC plans to replace two RSSTs from MPS Unit 3 (MPS3) with new transformers. The existing two MPS3 RSSTs will be moved to the new spare transformer storage pads to be available as spares. An oil containment berm will prevent any oil spillage to the environment through the use of containment and a filter system to stop oil flow.

The acquisition of a new MPS2 spare RSST, and the addition of the spare MPS3 RSSTs (Attachments 3, 4 and 5) are part of an ongoing effort to improve and maintain the reliability of MPS. DENC plans to complete the installation and relocation of the RSSTs in the 2<sup>nd</sup> quarter of 2018. The MPS site plan is shown in Attachment 1. The new RSST storage pads and containment berm is shown in Attachment 2.

Please accept this letter as notification pursuant to R.C.S.A. §16-50j-58, for construction that constitutes an exempt modification pursuant to R.C.S.A. §16-50j-57(b)(2). In accordance with R.C.S.A. §16-50j-58 a copy of this letter is being sent to Daniel M. Steward, First Selectman for the Town of Waterford, CT.

The planned installation of the new transformer storage pads and containment berm described above fall within those activities explicitly provided in R.C.S.A. §16-50J-57(b)(2).

1. The new storage pads and containment berm will be located within the owner controlled area and within the limits of the site boundaries and will require no expansion of these boundaries.

2. The Installation of the new storage pads and containment berm, as well as the storage of the transformers will not result in an increase in the height of any associated equipment or buildings at MPS.
3. The installation of new storage pads and containment berm will not result in an increase in the noise at the MPS site boundary by six decibels or more, or to levels that exceed State and Local criteria.
4. The installation of new storage pads and containment berm will not cause an increase in the electric or magnetic field levels at the MPS boundary.
5. The installation of new storage pads and containment berm will not cause any significant or adverse change or alteration in the physical or environmental characteristics of the MPS site.
6. The installation of new storage pads and containment berm will not result in any impact to the structural integrity of any buildings or structures at the MPS site.

For these reasons, DENC respectfully submits that the modifications described above to MPS constitute an exempt modification under R.C.S.A. §16-50j-57(b)(2).

A check in the amount of \$625.00 is enclosed.

Sincerely,  
  
Douglas C. Lawrence  
Director, Nuclear Station Safety and Licensing

Attachments:

1. Millstone Power Station Site Plan
2. New Reserve Station Service Transformer Storage Pads and Containment Berm Location Plan
3. New MPS2 Reserve Station Service Transformer #218 Outline
4. MPS3 6.9kV Reserve Station Service Transformer #325A Outline
5. MPS3 4.16kV Reserve Station Service Transformer #325B Outline
6. Check for Filing Fee

cc:

Daniel Steward, First Selectman, Town of Waterford  
Lillian M. Cuoco, Esq.  
Brian Bohmbach  
Thomas J. Bransfield

**ATTACHMENT 1**

**MILLSTONE POWER STATION SITE PLAN**

**MILLSTONE POWER STATION  
DOMINION ENERGY NUCLEAR CONNECTICUT, INC. (DENC)**

Serial No.  
MPS NSSL/GJC

RA-17-033  
R0

## **ATTACHMENT 2**

### **NEW RESERVE STATION SERVICE TRANSFORMER STORAGE PADS AND CONTAINMENT BERM LOCATION PLAN**

**MILLSTONE POWER STATION  
DOMINION ENERGY NUCLEAR CONNECTICUT, INC. (DENC)**

**ATTACHMENT 3**

**NEW MPS2 RESERVE STATION SERVICE  
TRANSFORMER #218 OUTLINE**

**MILLSTONE POWER STATION  
DOMINION ENERGY NUCLEAR CONNECTICUT, INC. (DENC)**

Serial No.  
MPS NSSL/GJC

RA-17-033  
R0

## **ATTACHMENT 4**

### **MPS3 6.9KV RESERVE STATION SERVICE TRANSFORMER #325A OUTLINE**

**MILLSTONE POWER STATION  
DOMINION ENERGY NUCLEAR CONNECTICUT, INC. (DENC)**

Serial No.  
MPS NSSL/GJC

RA-17-033  
R0

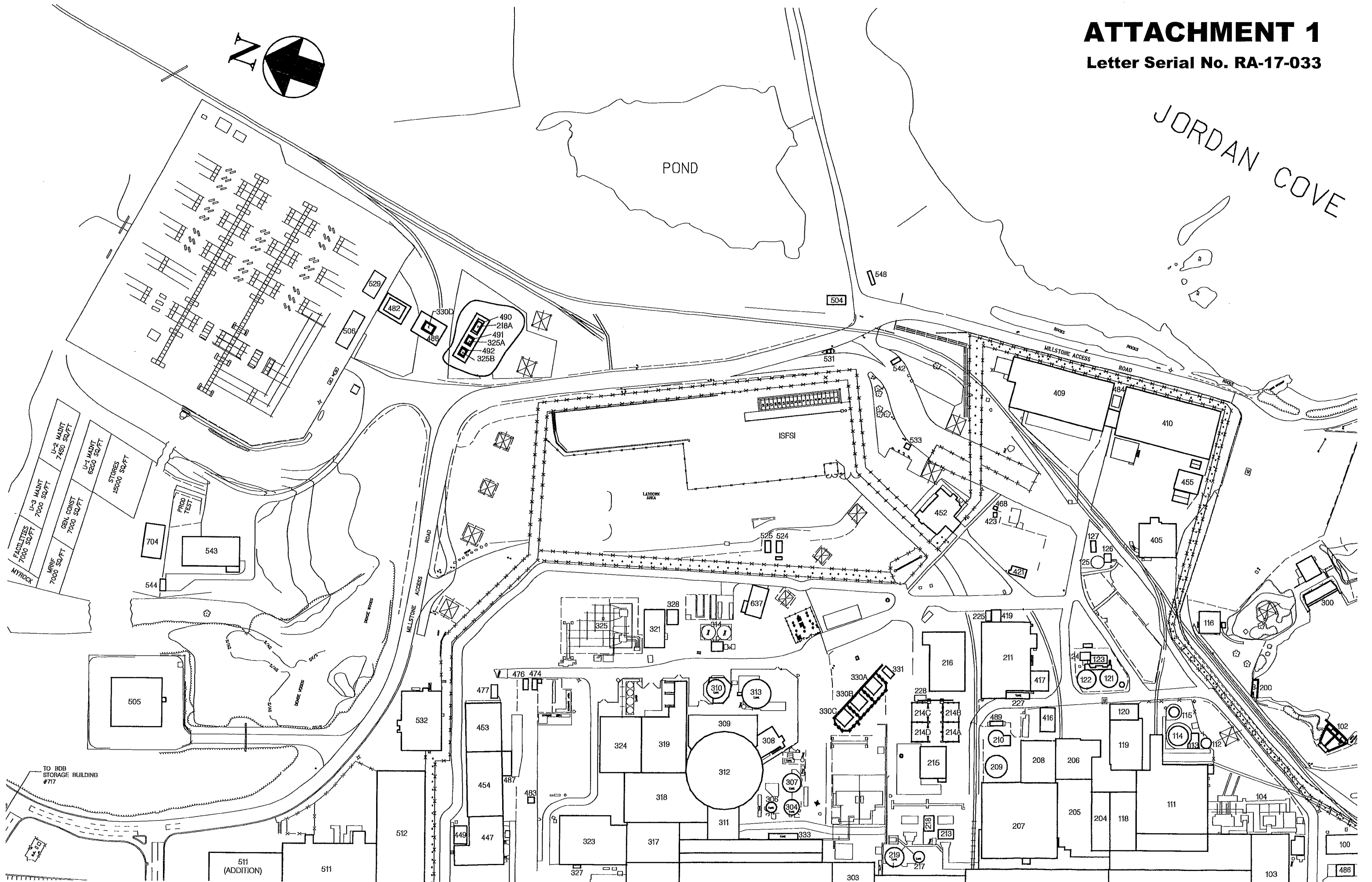
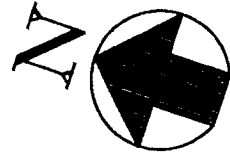
## **ATTACHMENT 5**

### **MPS3 4.16KV RESERVE STATION SERVICE TRANSFORMER #325B OUTLINE**

**MILLSTONE POWER STATION  
DOMINION ENERGY NUCLEAR CONNECTICUT, INC. (DENC)**

# ATTACHMENT 1

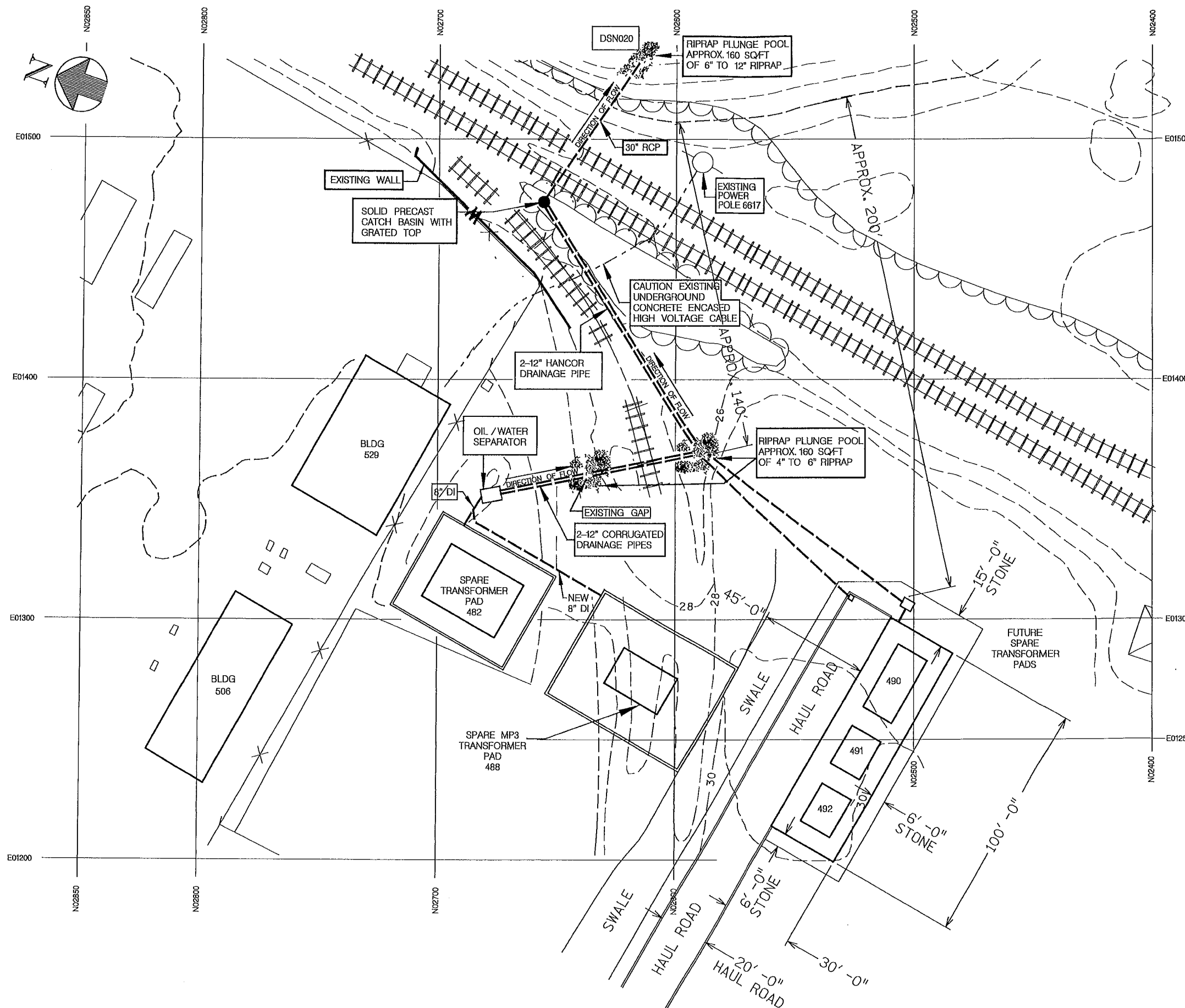
Letter Serial No. RA-17-033





# ATTACHMENT 2

Letter Serial No. RA-17-033



PRELIMINARY REV.3

FDCR 16-018

NEW SPARE TRANSFORMER PADS

SKE-WBZ-SPXFMRPAD3

# ATTACHMENT 3

## MPS2 Reserve Station Service Transformer #218A

Letter Serial No. RA-17-033

