

Dominion Nuclear Connecticut, Inc.  
Rope Ferry Rd., Waterford, CT 06385

Mailing Address: P.O. Box 128  
Waterford, CT 06385

dom.com



**Dominion®**

**SEP 11 2014**

Serial No. RA-14-029  
MPS NSSL/GJC R0

**EM-DNC-152-140918(e)**

**RECEIVED**  
SEP 18 2014

**CONNECTICUT  
SITING COUNCIL**

**ORIGINAL**

Melanie A. Bachman  
Acting Executive Director  
Connecticut Siting Council  
10 Franklin Square  
New Britain, CT 06051

**Re: Dominion Nuclear Connecticut, Inc. – Notice of Exempt Modification  
Millstone Power Station – Unit 1 Emergency Station Services Transformer  
Replacement Project**

Dear Ms. Bachman:

As you are aware, Dominion Nuclear Connecticut, Inc. (DNC) owns and operates Millstone Power Station (MPS) in Waterford, Connecticut. The MPS Unit 1 (MPS1) Emergency Station Services Transformer (ESST) provides power to the MPS1 spent fuel pool and MPS1 facilities equipment. The MPS1 ESST is located within the MPS protected area to the south of the MPS1 reactor building. (See MPS Site Plan included in Attachment 1). The existing MPS1 ESST is reaching the end of its service life and has been designated for replacement. The new MPS1 ESST will improve the electric reliability of the MPS1 spent fuel pool and MPS1 facilities electrical systems.

DNC plans to complete the site improvements associated with the MPS1 ESST replacement project during the fourth quarter of 2014. A photograph of the existing MPS1 ESST, as well as specifications for the new MPS1 ESST are included in Attachment 2. The new transformer is smaller than the existing transformer and will be installed on a pre-cast concrete pad immediately adjacent to the existing transformer. See Attachment 3. Once the new MPS1 ESST is in place and operational, the existing transformer will be removed.

Please accept this letter as notification pursuant to R.C.S.A. § 16-50j-58, for construction that constitutes an exempt modification pursuant to R.C.S.A. § 16-50j-57(b)(1). In accordance with R.C.S.A. § 16-50j-58, a copy of this letter is being sent to Daniel M. Steward, First Selectman for the Town of Waterford. The planned MPS1 ESST replacement described above falls squarely with those activities explicitly provided in R.C.S.A. § 16-50j-57(b)(1) as a “one for one replacement of facility components that are necessary for reliable operation” at MPS. For this reason, DNC respectfully requests Council’s acknowledgment of this notice.

Sincerely,



Lori Armstrong  
Director, Nuclear Station Safety and Licensing

Attachments:

1. Millstone Power Station Site Plan
2. Photograph of Existing MPS1 ESST
3. ESST Replacement Location Plan

cc: Daniel Steward, First Selectman, Town of Waterford  
G. Sturgeon  
F. A. Kocon  
K. R. Hennessy  
L. M. Cuoco, Esq.

Serial No. RA-14-029  
MPS NSSL/GJC R0

**ATTACHMENT 1**

**Millstone Power Station Site Plan**

**MILLSTONE POWER STATION  
DOMINION NUCLEAR CONNECTICUT, INC. (DNC)**

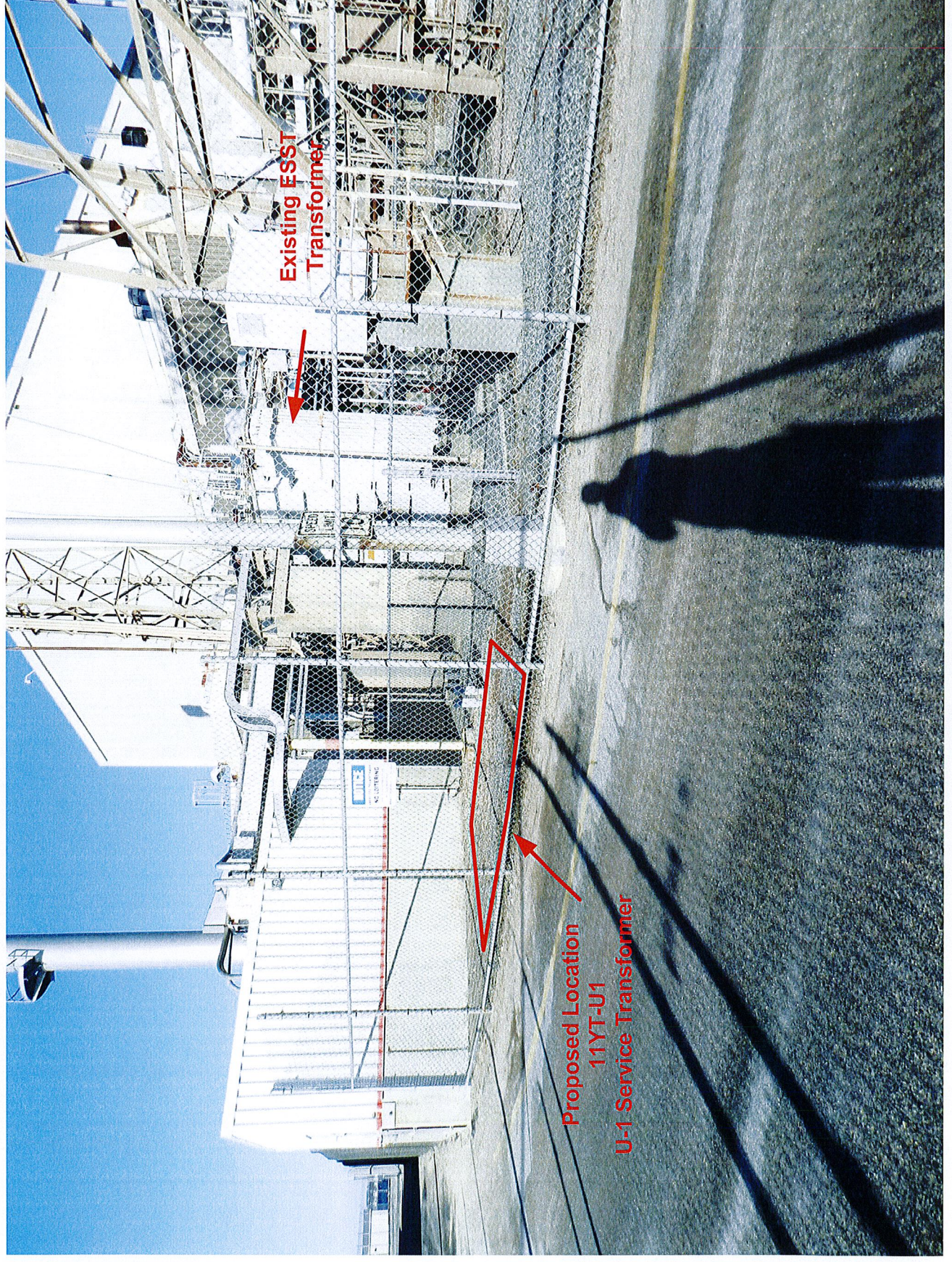


Serial No. RA-14-029  
MPS NSSL/GJC R0

**ATTACHMENT 2**

**Photograph of Existing MPS1 ESST  
(Emergency Station Services Transformer)**

**MILLSTONE POWER STATION  
DOMINION NUCLEAR CONNECTICUT, INC. (DNC)**

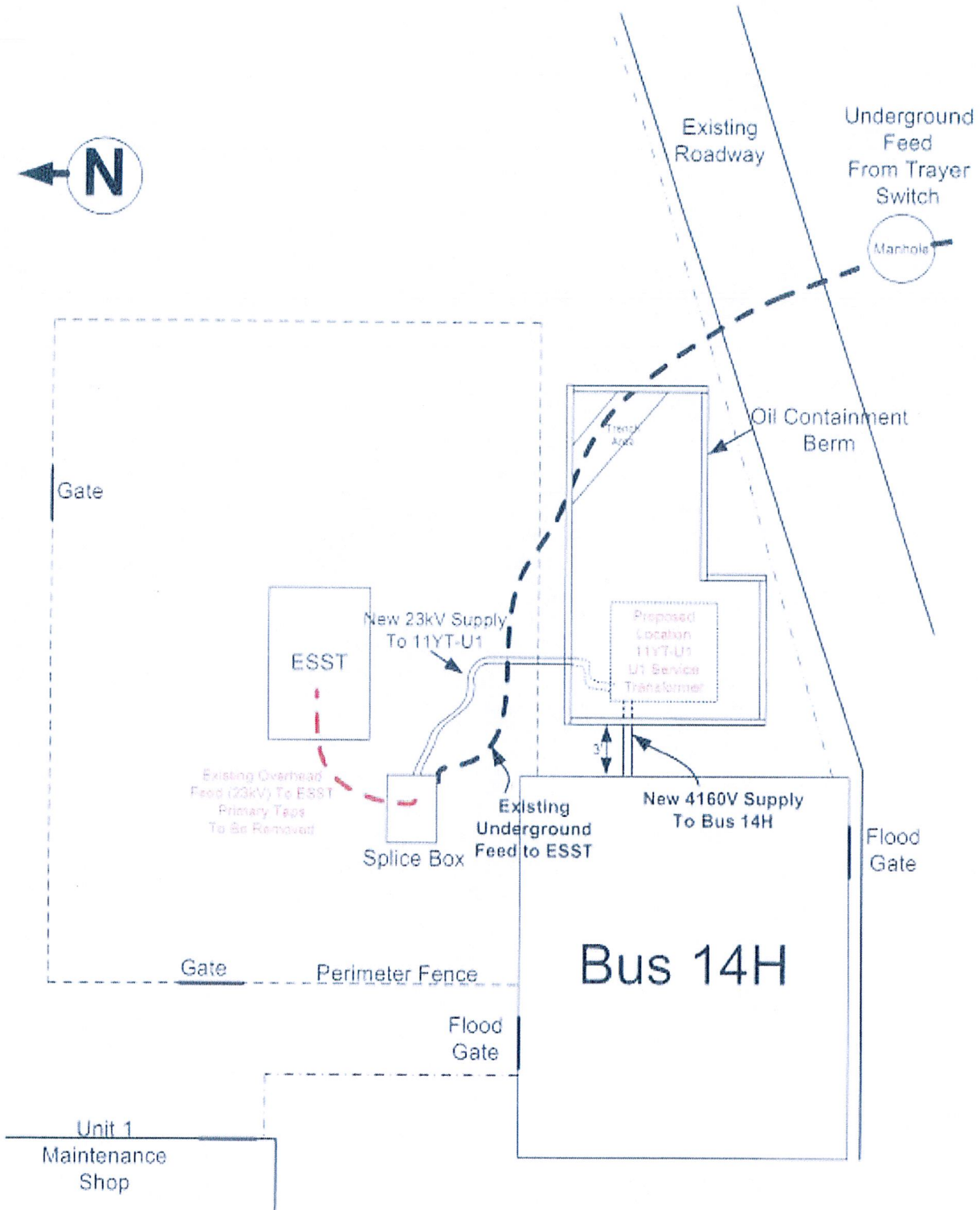


Existing ESST  
Transformer

Proposed Location  
11YT-U1  
U-1 Service Transformer

# MPS ESST Replacement Project Proposal

8/7/14







Serial No. RA-14-029  
MPS NSSL/GJC R0

**ATTACHMENT 3**

**ESST Replacement Location Plan  
(Emergency Station Services Transformer)**

**MILLSTONE POWER STATION  
DOMINION NUCLEAR CONNECTICUT, INC. (DNC)**

