

Dominion Nuclear Connecticut, Inc.
Rope Ferry Rd., Waterford, CT 06385

Mailing Address: P.O. Box 128
Waterford, CT 06385

dom.com



Dominion[®]

EM-DNC-152-140630 (e)

Serial No. RA-14-024
MPS NSSL/GJC R0

Melanie A. Bachman
Acting Executive Director
Connecticut Siting Council
10 Franklin Square
New Britain, CT 06051

ORIGINAL JUN 25 2014
RECEIVED JUN 30 2014
CONNECTICUT SITING COUNCIL

Re: Dominion Nuclear Connecticut, Inc. – Notice of Exempt Modification Millstone Power Station Substation 5 and 8 Transformer Replacement

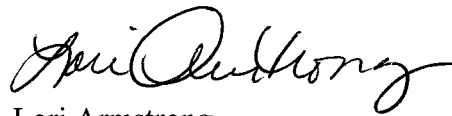
Dear Ms. Bachman:

As you are aware, Dominion Nuclear Connecticut, Inc. (DNC) owns and operates Millstone Power Station (MPS) in Waterford, Connecticut. The Substation 5 and 8 transformers referenced above are located within the MPS Protected Area, and to the west of the Independent Spent Fuel Storage Installation (ISFSI). (See MPS Site Plan included in Attachment 1). The Substation 5 and 8 transformers are currently used to supply electricity to non-power block buildings at MPS and to support certain operations associated with the ISFSI.

DNC is currently preparing for scheduled refueling outages at MPS Unit 3 (MPS3) in the Fall of 2014 and MPS Unit 2 (MPS2) in the Fall of 2015. A steam generator (SG) cleaning operation called a “deposit minimization treatment” (DMT) will be performed during each outage to clean the MPS3 and then the MPS2 SGs. Due to their age and capacity limitations, the existing Substation 5 and 8 transformers cannot provide the electric power required to support the DMT operations. MPS has elected, therefore, to replace the existing transformers with new, higher capacity units. A photograph of the existing Substation 5 and 8 transformers, as well as specifications for the replacement transformers are included in Attachment 2. The new transformers are slightly smaller than the existing transformers and will be installed on separate prefabricated concrete pads and vaults adjacent to the existing transformers. (See Attachment 3). Once the new transformers are in place and operational, the existing transformers will be removed. Following the DMT process, the new Substation 5 and 8 transformers will again be utilized to supply electricity to non-power block buildings and support ISFSI and other related operations at MPS.

Please accept this letter as notification pursuant to R.C.S.A. § 16-50j-58, for construction that constitutes an exempt modification pursuant to R.C.S.A. § 16-50j-57(b)(1). In accordance with R.C.S.A. § 16-50j-58, a copy of this letter is being sent to Daniel M. Steward, First Selectman for the Town of Waterford. The planned Substation 5 and 8 transformer replacement project described above falls squarely with those activities explicitly provided in R.C.S.A. § 16-50j-57(b)(1) as a “one for one replacement of facility components that are necessary for reliable operation” at MPS. For this reason, DNC respectfully requests Council’s acknowledgment of this notice.

Sincerely,



Lori Armstrong
Director, Nuclear Station Safety and Licensing

Attachments: 1 MPS Site Plan
2 Photograph of the Existing Substation 5 and 8 Transformers
3 Replacement Substation 5 and 8 Transformer Location Plan

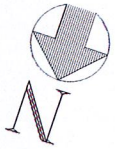
cc: Daniel Steward, First Selectman, Town of Waterford
R. H. Seel
F. A. Kocon
K. R. Hennessy
L. M. Cuoco, Esq.

Serial No. RA-14-024
MPS NSSL/GJC R0

ATTACHMENT 1

Millstone Power Station Site Plan

**MILLSTONE POWER STATION
DOMINION NUCLEAR CONNECTICUT, INC. (DNC)**



Serial No. RA-14-024
MPS NSSL/GJC R0
ATTACHMENT 1

PROPOSED LOCATION
OF THE NEW EQUIPMENT
FOR SUBSTATION 5 AND 8



SUBSTATION 5 AND 8

MILLSTONE STATION SITE PLAN

Serial No. RA-14-024
MPS NSSL/GJC R0

ATTACHMENT 2

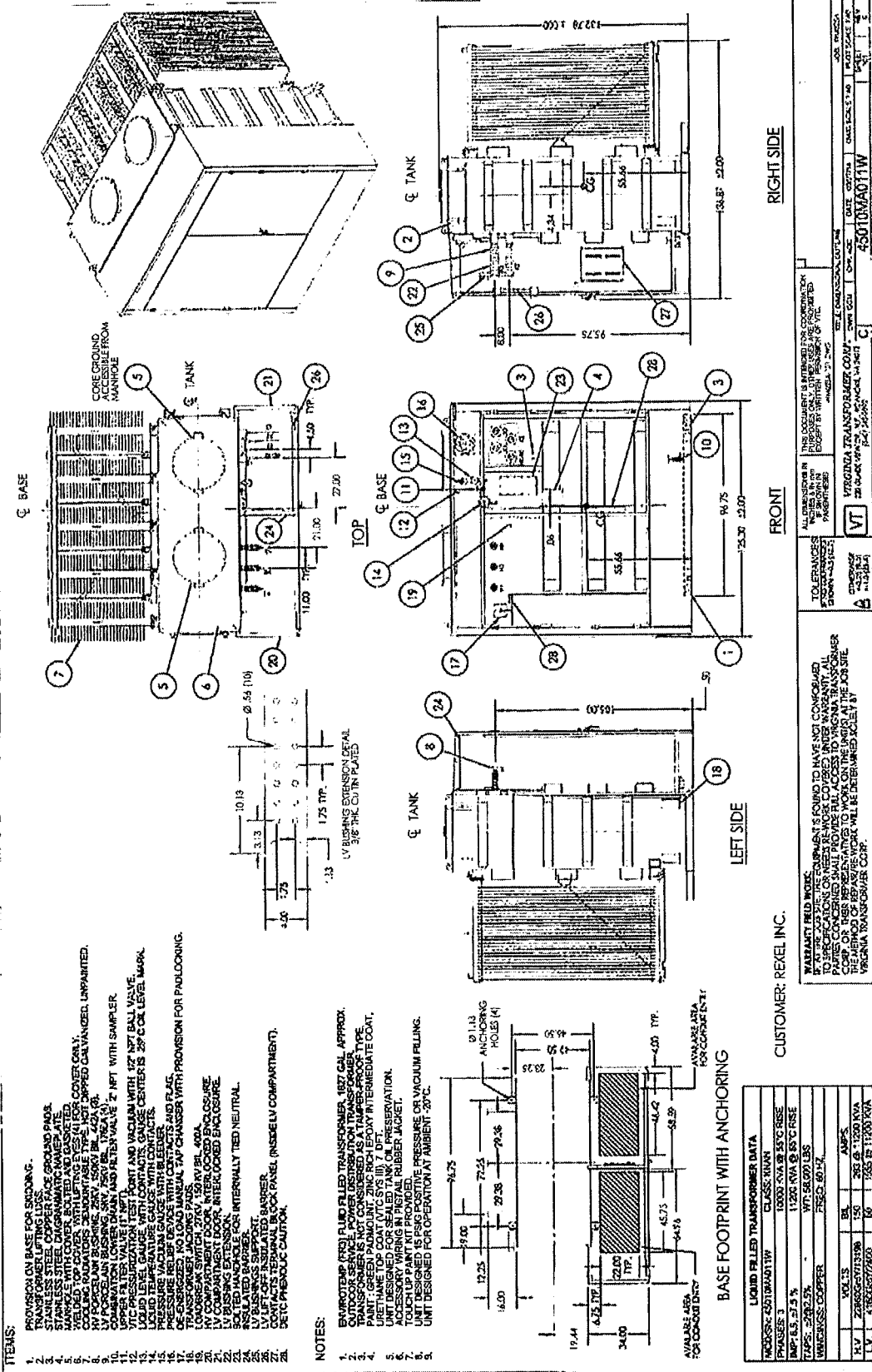
Photograph of the Existing Substation 5 and 8 Transformers

**MILLSTONE POWER STATION
DOMINION NUCLEAR CONNECTICUT, INC. (DNC)**

Substation 8

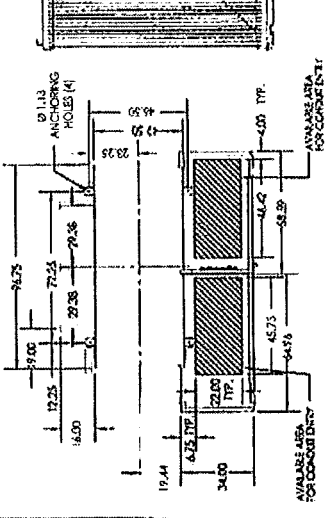
Substation 5





- ITEMS:
1. PROVISION ON BASE FOR ENDWINDING.
 2. 1/2" DIA. STAINLESS STEEL GROUND PADS.
 3. STAINLESS STEEL COPPER FACE GROUND PADS.
 4. STAINLESS STEEL DIAGNOSTIC WINDOW PLATE.
 5. 1/2" DIA. STAINLESS STEEL GROUND PADS.
 6. 1/2" DIA. STAINLESS STEEL COPPER FACE GROUND PADS.
 7. 1/2" DIA. STAINLESS STEEL GROUND PADS.
 8. 1/2" DIA. STAINLESS STEEL COPPER FACE GROUND PADS.
 9. 1/2" DIA. STAINLESS STEEL GROUND PADS.
 10. 1/2" DIA. STAINLESS STEEL COPPER FACE GROUND PADS.
 11. UPPER FILTER VALVE (1" NPT) POINT AND URCHIN WITH 1/2" NPT BALL VALVE.
 12. LIQUID LEVEL GAUGE WITH CONTACTS GAUGE CENTER IS 29" OAL LEVEL MARK.
 13. PRESSURE WARDEN GAUGE WITH CONTACTS AND FLAG.
 14. PRESSURE WARDEN GAUGE WITH CONTACTS AND FLAG.
 15. DE-ENERGIZED, NO LOAD MANUAL TAP CHANGER WITH PROVISION FOR PAULOOKING.
 16. TRANSFORMER JACKING PADS.
 17. TRANSFORMER JACKING PADS.
 18. TRANSFORMER JACKING PADS.
 19. TRANSFORMER JACKING PADS.
 20. TRANSFORMER JACKING PADS.
 21. TRANSFORMER JACKING PADS.
 22. TRANSFORMER JACKING PADS.
 23. TRANSFORMER JACKING PADS.
 24. TRANSFORMER JACKING PADS.
 25. TRANSFORMER JACKING PADS.
 26. TRANSFORMER JACKING PADS.
 27. TRANSFORMER JACKING PADS.
 28. TRANSFORMER JACKING PADS.

- NOTES:
1. ENVIRONMENT (FRS) FLUID FILLED TRANSFORMER, 1827 GAL APPROX.
 2. OUTDOOR SERVICE, POWER DISTRIBUTION TRANSFORMER.
 3. TRANSFORMER AND OIL SINKING (REGULATORY INTERMEDIATE CONT.)
 4. URETHANE TOP COAT (VTC-515 III) 7 DFT.
 5. UNIT DESIGNED FOR SEALED TANK OIL PRESERVATION.
 6. TANK OIL PRESERVATION KIT PROVIDED.
 7. TOUCH UP PAINT KIT PROVIDED.
 8. UNIT DESIGNED FOR POSITIVE PRESSURE OR VACUUM FILLING.
 9. UNIT DESIGNED FOR OPERATION AT AMBIENT -20°C.



BASE FOOTPRINT WITH ANCHORING

| LIQUID FILLED TRANSFORMER DATA | |
|--------------------------------|-----------------------|
| WORKSHEET: | 65010MA011W |
| CLASS: | MINOR |
| PHASES: | 3 |
| KVA: | 11200 KVA @ 85°C RISE |
| AMP: | 63.47.5 % |
| TAP: | 2482.5% |
| WT: | 58,000 LBS |
| WINDINGS: | COPPER |
| WINDING: | FUSED 80/17 |
| HT: | 00L13 |
| LT: | ZR060007015198 |
| LV: | ZR0600070200 |
| BA: | AMP |
| BP: | 262 @ 11000 KVA |
| BT: | 265 @ 11000 KVA |

CUSTOMER: REVEL INC.

RIGHT SIDE

FRONT

LEFT SIDE

WARRANTY FIELD WORK: IF A FIELD SERVICE ELEMENT IS FOUND TO HAVE NOT CONFORMED TO THE REQUIREMENTS OF THIS DRAWING, THE METHOD OF REPAIR/REWORK WILL BE DETERMINED SOLELY BY THE METHOD OF REPAIR/REWORK WILL BE DETERMINED SOLELY BY VIRGINIA TRANSFORMER CORP.

ALL DIMENSIONS IN THIS DRAWING ARE UNLESS OTHERWISE SPECIFIED IN PARENTS.

THIS DOCUMENT IS INTENDED FOR COORDINATION PURPOSES ONLY. IT DOES NOT CONSTITUTE A CONTRACT. THE METHOD OF REPAIR/REWORK WILL BE DETERMINED SOLELY BY VIRGINIA TRANSFORMER CORP.

DATE: 08/14/2014
 DATE: 08/14/2014
 DATE: 08/14/2014

DESIGNER: J. W. WILSON
 CHECKER: J. W. WILSON
 APPROVER: J. W. WILSON

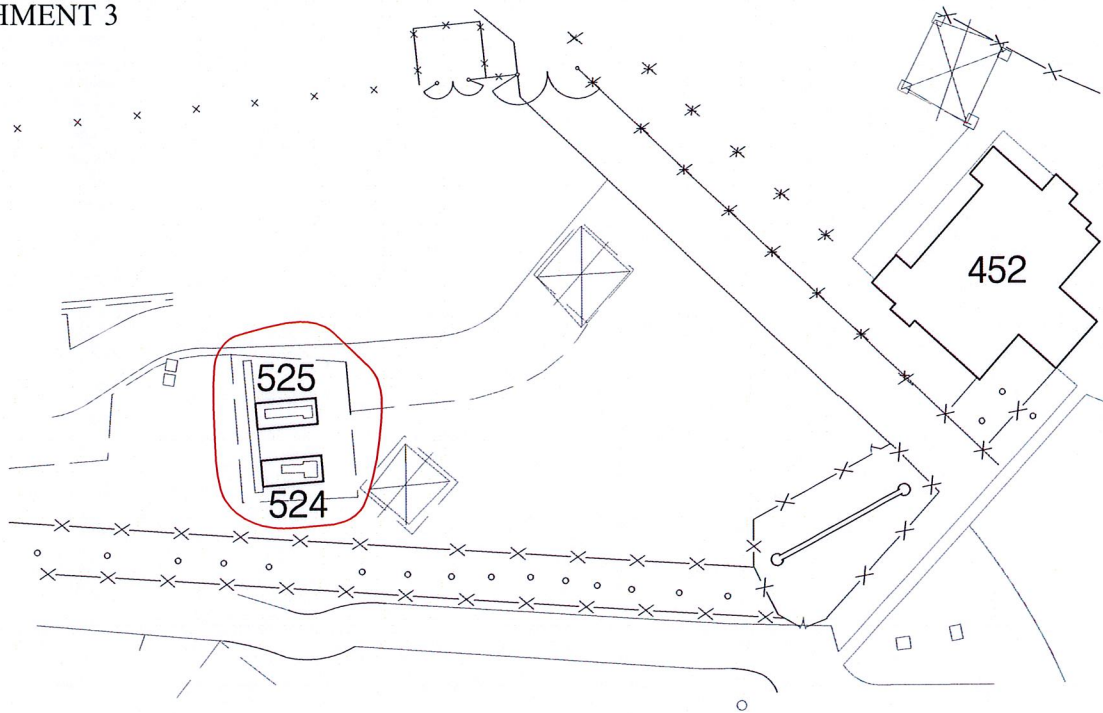
PROJECT: 65010MA011W

Serial No. RA-14-024
MPS NSSL/GJC R0

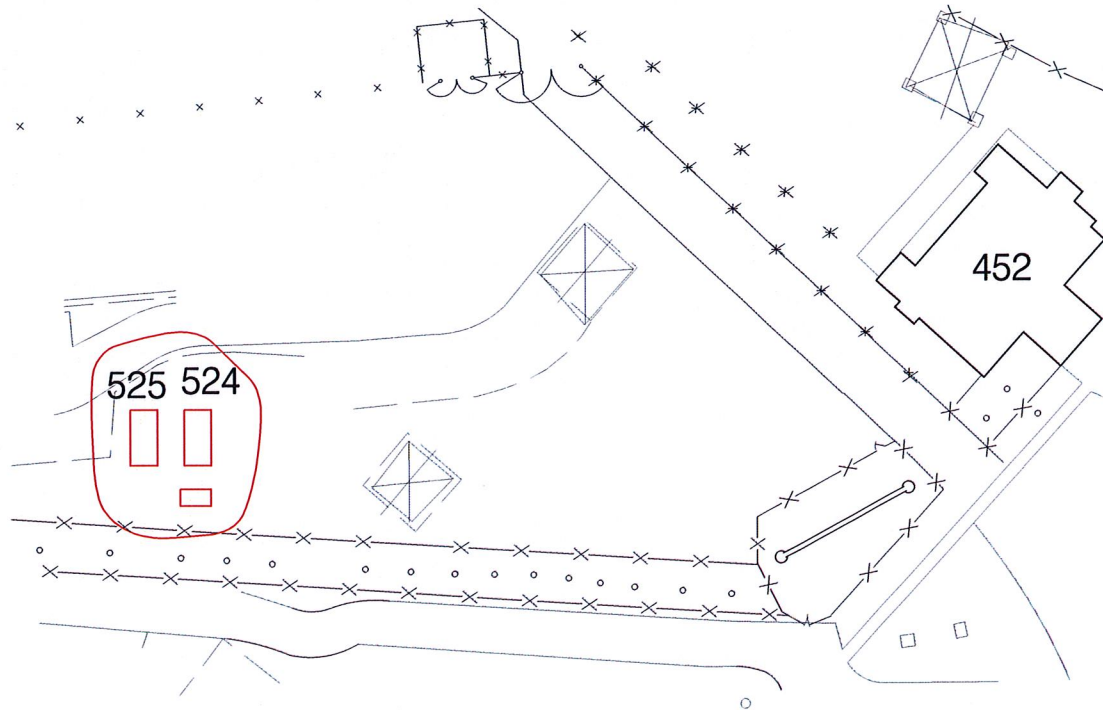
ATTACHMENT 3

Replacement Substation 5 and 8 Transformer Location Plan

**MILLSTONE POWER STATION
DOMINION NUCLEAR CONNECTICUT, INC. (DNC)**



BEFORE CHANGE



AFTER CHANGE