

Dominion Nuclear Connecticut, Inc.
Rope Ferry Rd., Waterford, CT 06385
Mailing Address: P.O. Box 128
Waterford, CT 06385
dom.com



Dominion[®]

OCT 7 2014

Serial No. RA-14-033
MPS NSSL/GJC R0

EM-DNC-152-140630(e)

RECEIVED
OCT 09 2014

CONNECTICUT
SITING COUNCIL

Melanie A. Bachman
Acting Executive Director
Connecticut Siting Council
10 Franklin Square
New Britain, CT 06051

ORIGINAL

Re: Dominion Nuclear Connecticut, Inc. – Completion of Millstone Power Station Substation 5 and 8 Transformer Replacement Project

Dear Ms. Bachman:

On June 25, 2014, Millstone Power Station (MPS) filed a notification pursuant to R.C.S.A. § 16-50j-58 with the Connecticut Siting Council (the Council) for construction that constituted an exempt modification pursuant to R.C.S.A. § 16-50j-57(b)(1) for the replacement of Substation 5 and 8 transformers located within the MPS Protected Area, and to the west of the Independent Spent Fuel Storage Installation (ISFSI). (See Attachment 1)

On July 18, 2014 the Council acknowledged MPS's notice to modify the existing facility with conditions and requested notification in writing when construction is completed. (See Attachment 2)

This letter serves to inform you of the Substation 5 and 8 transformer replacement project was completed on September 25, 2014. If you have any questions, please feel free to contact Mr. Forrest A. Kocon at (860) 447-1791, extension 5576.

Sincerely,

Lori J. Armstrong
Director, Nuclear Station Safety and Licensing

- Attachments: 1 Letter SN RA-14-024, FROM: Lori Armstrong, Director, Nuclear Station Safety and Licensing, TO: Melanie A. Bachman, Acting Executive Director Connecticut Siting Council, SUBJECT: Dominion Nuclear Connecticut, Inc. - Notice of Exempt Modification Millstone Power Station Substation 5 and 8 Transformer Replacement, DATED: June 25, 2014.
- 2 Letter FROM: Melanie A. Bachman, Acting Executive Director Connecticut Siting Council, TO: Lori Armstrong, Director, Nuclear Station Safety and Licensing, SUBJECT: EM-DNC-152-140630(e) - Dominion Nuclear Connecticut, Inc. notice of intent to replace Substation 5 and 8 transformers at the existing Millstone Power Station located off Rope Ferry Road, Waterford, Connecticut, DATED: July 18, 2014.

cc: Daniel Steward, First Selectman, Town of Waterford
R. H. Seel
F. A. Kocon
K. R. Hennessy
L. M. Cuoco, Esq.

Serial No. RA-14-033
MPS NSSL/GJC R0

ATTACHMENT 1

**Letter Serial Number RA-14-024,
FROM: Lori Armstrong, Director, Nuclear Station Safety and Licensing,
TO: Melanie A. Bachman, Acting Executive Director Connecticut Siting Council,
SUBJECT: Dominion Nuclear Connecticut, Inc. - Notice of Exempt Modification
Millstone Power Station Substation 5 and 8 Transformer Replacement,
DATED: June 25, 2014.**

**MILLSTONE POWER STATION
DOMINION NUCLEAR CONNECTICUT, INC. (DNC)**

Dominion Nuclear Connecticut, Inc.
Rope Ferry Rd., Waterford, CT 06385
Mailing Address: P.O. Box 128
Waterford, CT 06385
dom.com

Dominion

Serial No. RA-14-024
MPS NSSL/GJC R0

JUN 25 2014

Melanie A. Bachman
Acting Executive Director
Connecticut Siting Council
10 Franklin Square
New Britain, CT 06051

**Re: Dominion Nuclear Connecticut, Inc. – Notice of Exempt Modification Millstone
Power Station Substation 5 and 8 Transformer Replacement**

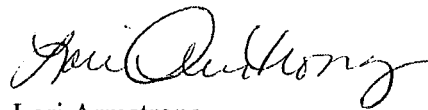
Dear Ms. Bachman:

As you are aware, Dominion Nuclear Connecticut, Inc. (DNC) owns and operates Millstone Power Station (MPS) in Waterford, Connecticut. The Substation 5 and 8 transformers referenced above are located within the MPS Protected Area, and to the west of the Independent Spent Fuel Storage Installation (ISFSI). (See MPS Site Plan included in Attachment 1). The Substation 5 and 8 transformers are currently used to supply electricity to non-power block buildings at MPS and to support certain operations associated with the ISFSI.

DNC is currently preparing for scheduled refueling outages at MPS Unit 3 (MPS3) in the Fall of 2014 and MPS Unit 2 (MPS2) in the Fall of 2015. A steam generator (SG) cleaning operation called a “deposit minimization treatment” (DMT) will be performed during each outage to clean the MPS3 and then the MPS2 SGs. Due to their age and capacity limitations, the existing Substation 5 and 8 transformers cannot provide the electric power required to support the DMT operations. MPS has elected, therefore, to replace the existing transformers with new, higher capacity units. A photograph of the existing Substation 5 and 8 transformers, as well as specifications for the replacement transformers are included in Attachment 2. The new transformers are slightly smaller than the existing transformers and will be installed on separate prefabricated concrete pads and vaults adjacent to the existing transformers. (See Attachment 3). Once the new transformers are in place and operational, the existing transformers will be removed. Following the DMT process, the new Substation 5 and 8 transformers will again be utilized to supply electricity to non-power block buildings and support ISFSI and other related operations at MPS.

Please accept this letter as notification pursuant to R.C.S.A. § 16-50j-58, for construction that constitutes an exempt modification pursuant to R.C.S.A. § 16-50j-57(b)(1). In accordance with R.C.S.A. § 16-50j-58, a copy of this letter is being sent to Daniel M. Steward, First Selectman for the Town of Waterford. The planned Substation 5 and 8 transformer replacement project described above falls squarely with those activities explicitly provided in R.C.S.A. § 16-50j-57(b)(1) as a “one for one replacement of facility components that are necessary for reliable operation” at MPS. For this reason, DNC respectfully requests Council’s acknowledgment of this notice.

Sincerely,



Lori Armstrong
Director, Nuclear Station Safety and Licensing

Attachments: 1 MPS Site Plan
2 Photograph of the Existing Substation 5 and 8 Transformers
3 Replacement Substation 5 and 8 Transformer Location Plan

cc: Daniel Steward, First Selectman, Town of Waterford
R. H. Seel
F. A. Kocon
K. R. Hennessy
L. M. Cuoco, Esq.

Serial No. RA-14-024
MPS NSSL/GJC R0

ATTACHMENT 1

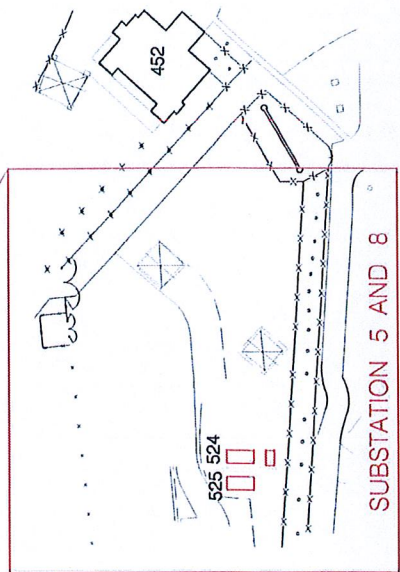
Millstone Power Station Site Plan

**MILLSTONE POWER STATION
DOMINION NUCLEAR CONNECTICUT, INC. (DNC)**



Serial No. RA-14-024
MPS NSSL/GJC R0
ATTACHMENT 1

PROPOSED LOCATION
OF THE NEW EQUIPMENT
FOR SUBSTATION 5 AND 8



MILLSTONE STATION SITE PLAN

Serial No. RA-14-024
MPS NSSL/GJC R0

ATTACHMENT 2

Photograph of the Existing Substation 5 and 8 Transformers

**MILLSTONE POWER STATION
DOMINION NUCLEAR CONNECTICUT, INC. (DNC)**

Substation 8

Substation 5



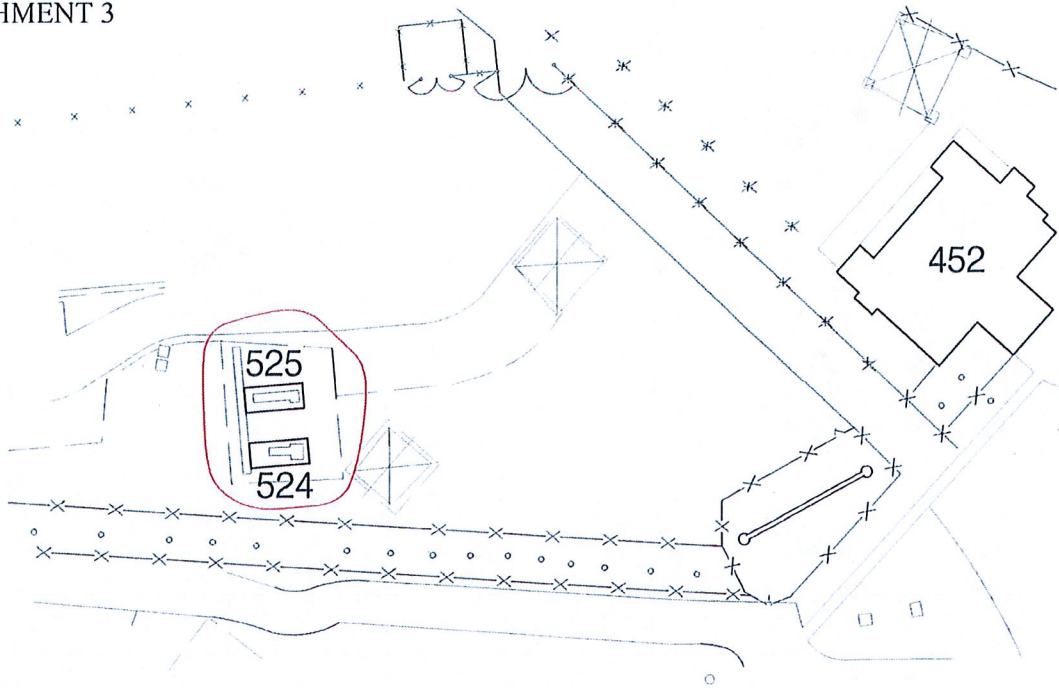
Serial No. RA-14-024
MPS NSSL/GJC R0

ATTACHMENT 3

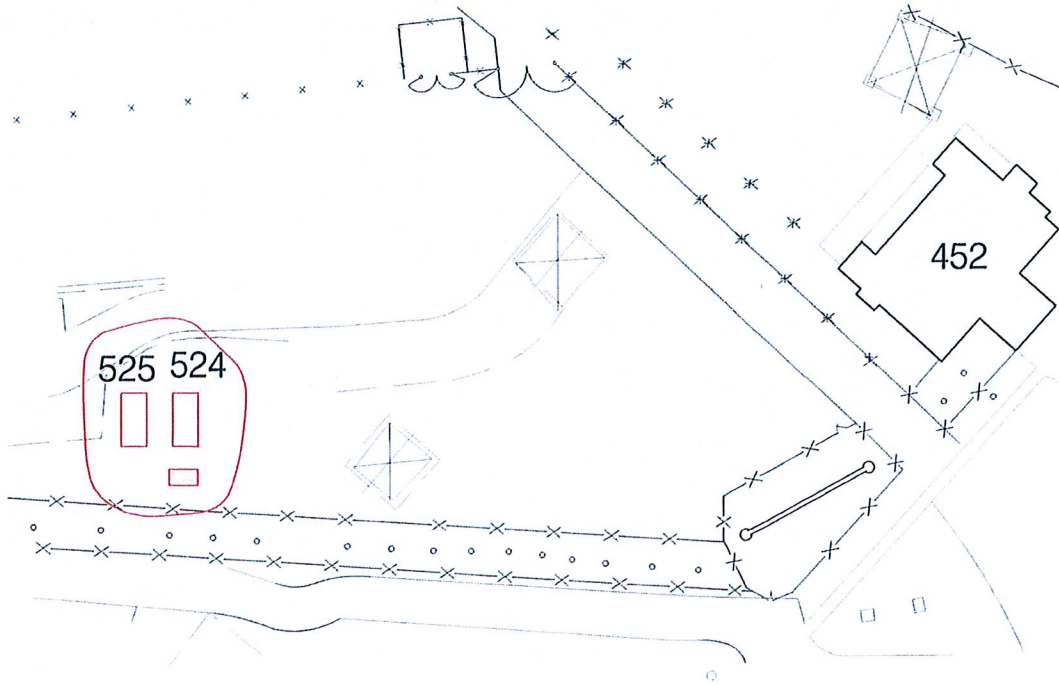
Replacement Substation 5 and 8 Transformer Location Plan

**MILLSTONE POWER STATION
DOMINION NUCLEAR CONNECTICUT, INC. (DNC)**

Serial No. RA-14-024
MPS NSSL/GJC R0
ATTACHMENT 3



BEFORE CHANGE



AFTER CHANGE

Serial No.
MPS NSSL/GJC

RA-14-033
R0

ATTACHMENT 2

**Letter FROM: Melanie A. Bachman, Acting Executive Director Connecticut Siting Council,
TO: Lori Armstrong, Director, Nuclear Station Safety and Licensing,
SUBJECT: EM-DNC-152-140630(e) - Dominion Nuclear Connecticut, Inc. notice of intent to
replace Substation 5 and 8 transformers at the existing Millstone Power Station located off
Rope Ferry Road, Waterford, Connecticut, DATED: July 18, 2014.**

**MILLSTONE POWER STATION
DOMINION NUCLEAR CONNECTICUT, INC. (DNC)**