



T-Mobile Northeast LLC, a subsidiary of T-Mobile USA, Inc.

Connecticut Market

March 29, 2023

Honorable Robert Stein, Chairman,
and members of the Council
Connecticut Siting Council
10 Franklin Square
New Britain, CT 06051

Re: T-MOBILE Northeast LLC notice of intent to install a temporary cellular telephone facility located at 55 West Street, Stafford Springs, Connecticut

Dear Chairman Stein and Members of the Council:

Centerline is pleased to submit this Notice of Exempt Modification on behalf of T-MOBILE Northeast LLC

T-MOBILE Northeast LLC hereby notifies the Connecticut Siting Council of its intent for the temporary use of telecommunications equipment by placing a Cell On Light Truck (COLT) on the grounds of Stafford Motor Speedway located at 55 West Street, Stafford Springs, Connecticut. Please accept this Notice to the Connecticut Siting Council, Pursuant to RSCA Section 16-50j-73, of construction that constitutes an exempt modification under RSCA Section 16-50j-72 (d). In compliance with RSCA Section 16-50j-73, copies of this Notice of Exempt Modification are being sent to the First Selectman of Stafford Springs and the Stafford Motor Speedway, where the event takes place.

The proposed temporary cell site meets the criteria set forth in RSCA 16-50j-72(d) for temporary cellular service for events of statewide significance. The site is necessary to provide additional system capacity to accommodate the increased communication needs during the Subaru Wicked Big Meet.

The Subaru Wicked Big Meet is June 11, 2023 but T-Mobile will need to do testing beforehand to make sure the site is up and running before the event.

Proposed Temporary Facility

The temporary site will be located at 55 West Street. in Stafford Springs, Connecticut on the property known as the Stafford Motor Speedway. (See attached location map) Coordinates for the location are N 41.957286, W 72.323917. A 15 kw diesel generator will be used for power and the proposed temporary cell site will not increase the noise level by six decibels or more.

Equipment installation will start on June 3, 2023 and the site will be on-air until June 12, 2023. The COLT will be removed on June 13, 2022, the morning after the event.

T-Mobile’s temporary cell site will consist of a “Cell On Light Truck” (“COLT”) (See attached photo) which needs a 25’ x 25’ footprint, contains three indoor RBS6201’s and PBC6200 with battery backup, a backup generator, dual masts and can support 5 sector multibeam antennas.

Power Density Calculations

T-Mobile’s temporary cell site will not result in a total radio frequency electromagnetic radiation power density, measured at ground level at the COLT location, at or above State or Federal standards. The following table shows the power density at the site from the proposed temporary cellular transmissions form the COLT:

T-Mobile Sector	Power Density Value (%)
Sector A:	33.42%
Sector B:	33.42%
Sector C:	33.42%
Sector D:	33.42%
Sector E:	33.42%
T-Mobile Maximum MPE % (Sector A):	33.42%
Site Total:	33.42%
Site Compliance Status:	COMPLIANT

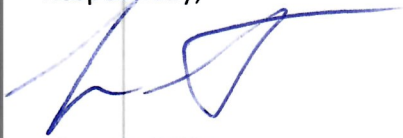
See attached full report

Conclusion

For the reasons above, we respectfully request the Council acknowledge T-Mobile's Notice of Exempt Modification for the temporary cell site to be operated during the Subaru Wicked Big Meet pursuant to RCSA Section 16-50j-72(d).

Please call me with any questions concerning this Notice at 203-417-4446. Thank you.

Respectfully,



Thomas White
Agent of T-Mobile

Cc: First Selectman Sal P Titus
Stafford Motor Speedway



March 20, 2023

Re: Standard Easement Agreement by and between the Subaru Wicked Big Meet Event ("Landlord") and T-Mobile Northeast LLC ("Tenant").

Site Number: CTCLT01A
Site Address: 55 West Street, Stafford Springs, CT ("Property")

Mr. Duong:

Tenant has the right to place a Cell On Lite Truck along with; associated equipment cabinets and back-up trailered generator ("COLT") which will be enclosed within a temporary 50'x50' safety fence on the property listed as 55 West Street, Stafford Springs, CT for the Subaru Big Meet ("Event") on June 11, 2023 in an area located as shown on the attached Exhibit A.

It is also understood that Tenant will have access to be able to set up the COLT at least three (7) days prior to the Event. The COLT will be removed by June 13, 2023.


Please signify your approval by signing and dating one (1) original of this Consent Letter in the space provided below. Kindly return the Consent Letter via email to twhite@clinellc.com.

Should you have any questions, please contact Thomas White at 203-417-4446. Thank you in advance for your cooperation in this matter.

Very truly yours,

Thomas White
Agent for T-Mobile

Acknowledged, Accepted and Agreed;

By: 
Name: Khanh Duong
Title: General Manager
Date: 4/2/2023

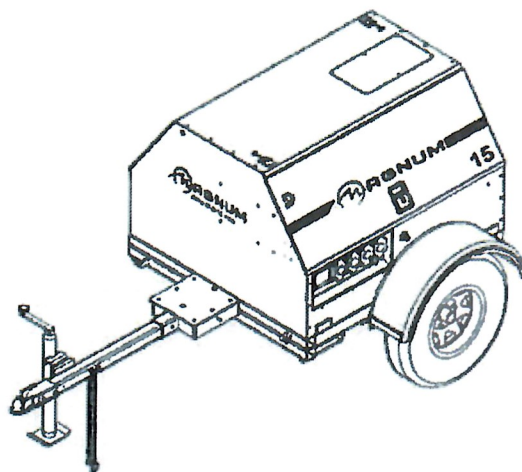


Empowering Real People

Magnum Mobile Lite Generator – MLG15 Specifications

ENGINE

- Mitsubishi® S4L2-Y461ML - naturally aspirated, diesel engine o Prime - 22.3 hp @ 1800 rpm o 4 cylinder o 1.8 L displacement o Interim Tier IV approved
- Polyethylene fuel tank o 56 gal. capacity o 43 hr. run time – full load o 3 ½” fill port
- Fuel consumption at prime:
 - o 100% - 1.30 gph (4.92 Lph) o 75% - 0.98 gph (3.71 Lph) o 50% - 0.65 gph (2.46 Lph)
- Cooling system capable of operating at 120°F ambient
- Rubber vibration dampers isolate engine/generator from frame
- Full flow oil filter, spin on type
- Fuel filter with replaceable element
- Dry type cartridge air filter
- 60 Hz engine/generator



ENGINE CONTROLS

- Engraved aluminum punched and anodized control panel
- Four position keyed switch – glow plugs (preheat, off, run, start)
- Hour meter
- Automatic low oil/high temperature shutdown system

GENERATOR

- Marathon Electric® o Brushless o 4 pole o Class H insulation
- Single phase output o Prime - 13 kW / 13 kVA (54A @ 240V) o Standby - 14 kW / 14 kVA (58A @ 240V)
- Voltage regulation +/- 1% with Marathon SE350 Voltage Regulator



MLG15 Specifications Continued

ELECTRICAL SYSTEM AND CONTROLS

- 70A start limit breaker (assures no load condition exists before starting)
- Convenience receptacles with individual breakers o (2) 120V 20 Amp GFCI duplex outlets (Nema 5-20R type) o (2) 240V 30 Amp twistlock outlets (Nema L6-30R type) o (2) 240V 50 Amp twistlock outlets (Non-Nema 6369)
- 440 CCA wet cell battery

ENCLOSURE

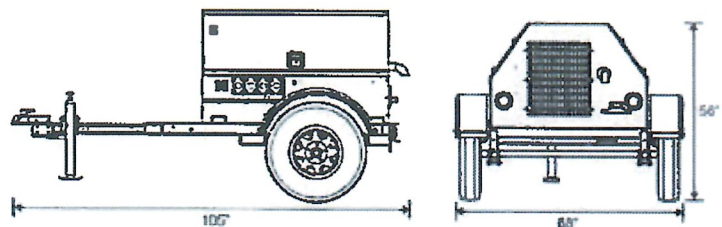
- Steel, 14-gauge, sound attenuated enclosure o UV & fade resistant, high temperature cured, white polyester powder paint o Insulated and baffled o 70 dB(A) at 23 feet – prime power
- Fully lockable enclosure
- Stainless steel hinges, door latches and exterior hardware
- Emergency stop switch located on front panel
- License plate holder with light
- Multi-lingual operating/safety decals
- Document holder with operating/parts manuals including AC/DC wiring diagrams

TRAILER

- DOT approved tail, side, brake, and directional lights o Recessed rear lights
- Transportation tie downs
- Safety chains with spring loaded safety hooks
- Single wall polyethylene fenders
- 2" ball hitch
- 2200 lb. leaf spring axle
- 2000 lb. tongue jack with footplate
- ST205/75R15 tubeless tires – 6 ply
- 48" track width

WEIGHTS & DIMENSIONS

- Dry weight: 1425 lbs (646 kg)
- Operating weight: 1823 lbs (827 kg)
- 105 x 68 x 56 in
(2.67 x 1.73 x 1.42 m)

**WARRANTY**

- Engine and generator covered under OEM warranty – consult factory for details

CERTIFICATIONS

- CSA certified



MLG15 Specifications Continued:

MLG15 Options

ENGINE OPTIONS

- ◆ Heated fuel filter
- ◆ Lower radiator hose – engine heater
- ◆ Oil drain valve kit

ELECTRICAL CONTROLS OPTIONS

- ◆ 720 CCA gel cell battery
- ◆ 720 CCA wet cell battery
- ◆ 685 CCA gel cell battery
- ◆ Battery disconnect
- ◆ Battery charger – 2A trickle

VOLTAGE OUTPUT OPTIONS

- ◆ Alternative receptacle panel – consult factory for configurations

COOLANT OPTIONS

- ◆ 60/40 Coolant – cold weather applications

ENCLOSURE OPTIONS

- ◆ Interior cabinet light
- ◆ Level indicator
- ◆ Tamper pack
- ◆ Liquid containment / Quiet pack
- ◆ Lift structure



FUEL TANK OPTIONS

- ◆ 56 gal. fuel tank
- ◆ Tethered fuel tank cap

TRAILER OPTIONS

- ◆ 6 pin or 7 spade electrical connectors
- ◆ Outrigger package
- ◆ Tube and sleeve jack
- ◆ Spare tire/wheel kit

HITCH OPTIONS

- ◆ 2.5" lunette ring
- ◆  3" lunette ring
- ◆  3" HD lunette ring

- ◆ 2 5/16" ball
- ◆ Combination hitch – 2.5" lunette ring / 2" ball

05/09





NOTE:
 ALL EQUIPMENT LOCATIONS ARE APPROXIMATE AND ARE SUBJECT TO APPROVAL BY T-MOBILE NORTHEAST, LLC STRUCTURAL & RF ENGINEERS. LOCATIONS OF POWER & TELEPHONE FACILITIES ARE SUBJECT TO APPROVAL BY OTHER UTILITY COMPANIES.

- NOTES:
- CALL THE EQUIPMENT FOR ALL THE CONSTRUCTION NOTIFICATION 72 HOURS PRIOR TO ANY EXCAVATION ACTIVITY.
 DIG SAFE SYSTEM (MA, NH, RI, VT):
 1-800-922-4455
 CALL BEFORE YOU DIG (CT):
 1-800-922-4455
 - CONTRACTOR TO FIELD VERIFY DESIGN AND NOTIFY THE CONSTRUCTION MANAGER AND ENGINEER OF ANY DISCREPANCIES.
 APPROXIMATE COORDINATES OF SITE LOCATION:
 LATITUDE: 41° 57' 26.23"
 LONGITUDE: 71° 19' 26.10"

**T-MOBILE
 NORTHEAST LLC**
 31 GREEN ROAD SOUTH
 BLOOMFIELD, CT 06002
 OFFICE: (860) 446-1114

CENTERLINE
 CONSULTING ENGINEERS
 750 WEST CENTER ST. SUITE 301
 WEST BRIDGEWATER, MA 02379
 PHONE: 781.713.4725

REVISIONS		
NO.	DATE	DESCRIPTION
0	4/28/20	ISSUED FOR REVIEW

DESIGNED BY:	TC
APPROVED BY:	DC

IT IS A VIOLATION OF THE ANY PERMIT LAWS THAT ANY OTHER PARTY SHALL BE ALLOWED TO EXCAVATE OR REMOVE ANY EQUIPMENT OR FACILITIES FROM THE COLT SITE WITHOUT THE WRITTEN PERMISSION OF THE CENTERLINE ENGINEERS.

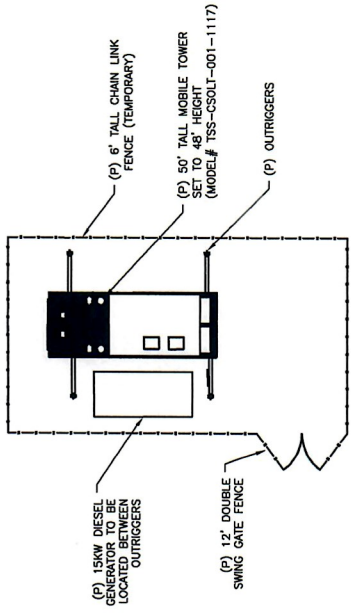
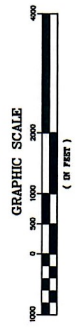


SITE INFO:
 CTCLTSTA
 STAFFORD MOTOR
 SPEEDWAY
 55 WEST ST.
 STAFFORD SPRINGS, CT
 06076

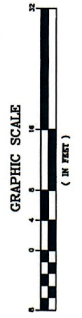
SHEET TITLE: LOCATION MAP &
 EQUIPMENT PLAN
 DRAWING #: LE-1
 REVISIONS: 0



COLT LOCATION MAP
 SCALE: 1"=1000' (22"X34")
 1"=2000' (11"X17")



EQUIPMENT PLAN
 SCALE: 1/8" = 1'-0" (22"X34")
 1/16" = 1'-0" (11"X17")



NOTE:
 ALL EQUIPMENT LOCATIONS ARE APPROXIMATE AND ARE SUBJECT TO APPROVAL BY T-MOBILE NORTHEAST, LLC STRUCTURAL & RF ENGINEERS. LOCATIONS OF POWER & TELEPHONE FACILITIES ARE SUBJECT TO APPROVAL BY OTHER UTILITY COMPANIES.

**T-MOBILE
 NORTHEAST LLC**

14 SOUTH LINDSAY DRIVE
 STAFFORD SPRINGS, CT 06076
 OFFICE (860) 448-3116



750 WEST CENTER ST. SUITE 301
 WEST BRIDGEWATER, MA 02379
 PHONE: 781.715.4725

REVISIONS

NO.	DATE	ISSUED FOR REVIEW	DESCRIPTION
0	4/29/20		

DESIGNED BY:	TC	APPROVED BY:	DC
--------------	----	--------------	----

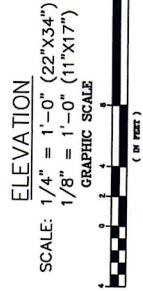
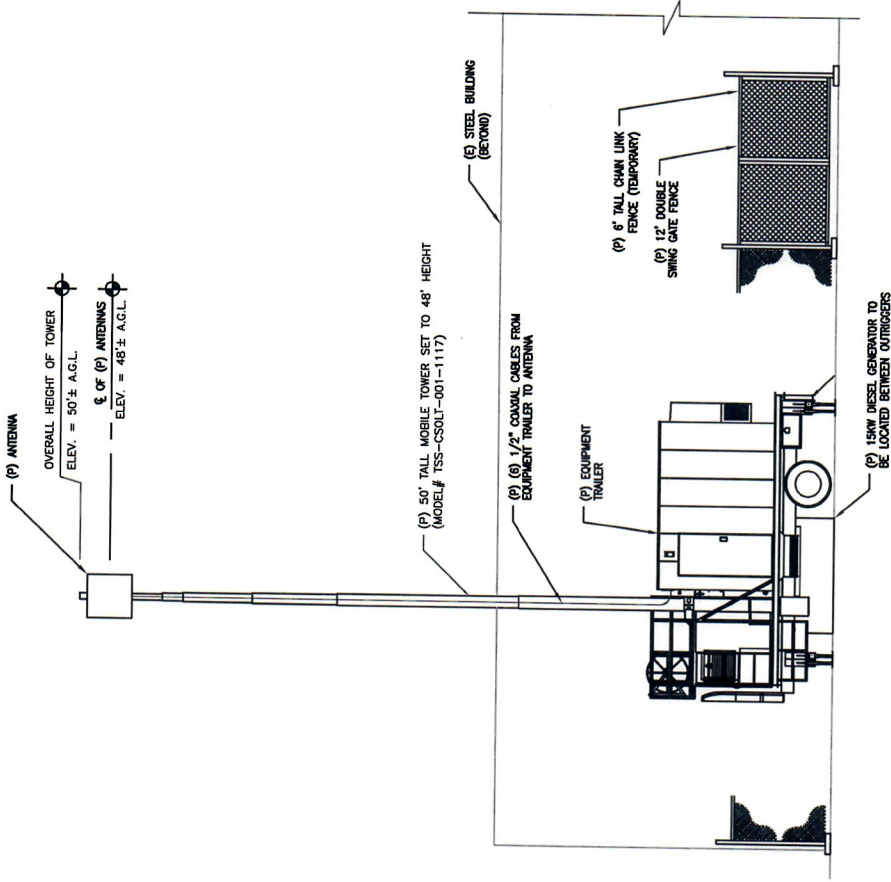
THIS DRAWING IS THE PROPERTY OF CENTERLINE COMMUNICATIONS, INC. IT IS TO BE USED ONLY FOR THE PROJECT AND SITE SPECIFICALLY IDENTIFIED HEREON. NO PART OF THIS DRAWING IS TO BE REPRODUCED OR TRANSMITTED IN ANY FORM OR BY ANY MEANS, ELECTRONIC OR MECHANICAL, INCLUDING PHOTOCOPYING, RECORDING, OR BY ANY INFORMATION STORAGE AND RETRIEVAL SYSTEM, WITHOUT THE WRITTEN PERMISSION OF CENTERLINE COMMUNICATIONS, INC.



SITE INFO:

CTCLTSTA
 STAFFORD MOTOR
 SPEEDWAY
 55 WEST ST.
 STAFFORD SPRINGS, CT
 06076

SHEET TITLE:	NORTHEAST ELEVATION	REVISION:	0
DRAWING #:	LE-2		





RADIO FREQUENCY EMISSIONS ANALYSIS REPORT EVALUATION OF HUMAN EXPOSURE POTENTIAL TO NON-IONIZING EMISSIONS

T-Mobile Existing Facility

Site ID: CTCLT01-SUBARU

Subaru Wicked Big Meet
55 West Street
Stafford Springs, Connecticut 06076

March 15, 2022

EBI Project Number: 6220001936

Site Compliance Summary	
Compliance Status:	COMPLIANT
Site total MPE% of FCC general population allowable limit:	33.42%

April 29, 2022

T-Mobile

Attn: Jason Overbey, RF Manager
35 Griffin Road South
Bloomfield, Connecticut 06002

Emissions Analysis for Site: CTCLT01-SUBARU - Subaru Wicked Big Meet

EBI Consulting was directed to analyze the proposed T-Mobile facility located at **55 West Street** in **Stafford Springs, Connecticut** for the purpose of determining whether the emissions from the Proposed T-Mobile Antenna Installation located on this property are within specified federal limits.

All information used in this report was analyzed as a percentage of current Maximum Permissible Exposure (% MPE) as listed in the FCC OET Bulletin 65 Edition 97-01 and ANSI/IEEE Std C95.1. The FCC regulates Maximum Permissible Exposure in units of microwatts per square centimeter ($\mu\text{W}/\text{cm}^2$). The number of $\mu\text{W}/\text{cm}^2$ calculated at each sample point is called the power density. The exposure limit for power density varies depending upon the frequencies being utilized. Wireless Carriers and Paging Services use different frequency bands each with different exposure limits; therefore, it is necessary to report results and limits in terms of percent MPE rather than power density.

All results were compared to the FCC (Federal Communications Commission) radio frequency exposure rules, 47 CFR 1.1307(b)(1) – (b)(3), to determine compliance with the Maximum Permissible Exposure (MPE) limits for General Population/Uncontrolled environments as defined below.

General population/uncontrolled exposure limits apply to situations in which the general population may be exposed or in which persons who are exposed as a consequence of their employment may not be made fully aware of the potential for exposure or cannot exercise control over their exposure. Therefore, members of the general population would always be considered under this category when exposure is not employment related, for example, in the case of a telecommunications tower that exposes persons in a nearby residential area.

Public exposure to radio frequencies is regulated and enforced in units of microwatts per square centimeter ($\mu\text{W}/\text{cm}^2$). The general population exposure limits for the 600 MHz and 700 MHz frequency bands are approximately $400 \mu\text{W}/\text{cm}^2$ and $467 \mu\text{W}/\text{cm}^2$, respectively. The general population exposure limit for the 1900 MHz (PCS), 2100 MHz (AWS) and 11 GHz frequency bands is $1000 \mu\text{W}/\text{cm}^2$. Because each carrier will be using different frequency bands, and each frequency band has different exposure limits, it is necessary to report percent of MPE rather than power density.



Occupational/controlled exposure limits apply to situations in which persons are exposed as a consequence of their employment and in which those persons who are exposed have been made fully aware of the potential for exposure and can exercise control over their exposure. Occupational/controlled exposure limits also apply where exposure is of a transient nature as a result of incidental passage through a location where exposure levels may be above general population/uncontrolled limits (see below), as long as the exposed person has been made fully aware of the potential for exposure and can exercise control over his or her exposure by leaving the area or by some other appropriate means.

Additional details can be found in FCC OET 65.

CALCULATIONS

Calculations were done for the proposed T-Mobile Wireless antenna facility located at 55 West Street in Stafford Springs, Connecticut using the equipment information listed below. All calculations were performed per the specifications under FCC OET 65. Since T-Mobile is proposing highly focused directional panel antennas, which project most of the emitted energy out toward the horizon, all calculations were performed assuming a lobe representing the maximum gain of the antenna per the antenna manufacturer's supplied specifications, minus 10 dB for directional panel antennas and 20 dB for highly focused parabolic microwave dishes, was focused at the base of the tower. For this report, the sample point is the top of a 6-foot person standing at the base of the tower.

For all calculations, all equipment was calculated using the following assumptions:

- 1) 2 LTE channels (PCS Band - 1900 MHz) were considered for each sector of the proposed installation. These Channels have a transmit power of 60 Watts per Channel.
- 2) 2 LTE channels (AWS Band – 2100 MHz) were considered for each sector of the proposed installation. These Channels have a transmit power of 60 Watts per Channel.
- 3) All radios at the proposed installation were considered to be running at full power and were uncombined in their RF transmissions paths per carrier prescribed configuration. Per FCC OET Bulletin No. 65 - Edition 97-01 recommendations to achieve the maximum anticipated value at each sample point, all power levels emitting from the proposed antenna installation are increased by a factor of 2.56 to account for possible in-phase reflections from the surrounding environment. This is rarely the case, and if so, is never continuous.



EBI Consulting

environmental | engineering | due diligence

- 4) The **Commscope 5NPX1006F** is a multi-beam antenna that covers approximately 100 degrees utilizing 5 separate narrow beams per band separated by 20 degrees of azimuth orientation between each adjacent beam. For T-Mobile's installation, this antenna will be utilized to broadcast 5 separate sectors. Configuration and power data is shown below in the ***T-Mobile Site Inventory and Power Data*** table and is broken down by sector. The maximum gain of the antenna per the antenna manufacturer's supplied specifications, minus 10 dB for directional panel antennas and 20 dB for highly focused parabolic microwave dishes, was used for all calculations. This value is a very conservative estimate as gain reductions for these particular antennas are typically much higher in this direction.
- 5) The antenna mounting height centerline of the proposed antennas is 50 feet above ground level (AGL).
- 6) Emissions values for additional carriers were taken from the Connecticut Siting Council active database. Values in this database are provided by the individual carriers themselves.
- 7) Emissions from additional carriers were not included because emissions data for the site location are not available.
- 8) All calculations were done with respect to uncontrolled / general population threshold limits.



EBI Consulting

environmental | engineering | due diligence

T-Mobile Site Inventory and Power Data

Sector	Azimuth	Antenna Make / Model	Antenna Height (ft)	Frequency Band (MHz)	Technology	TX Power per Channel (W)	Number of Channels	Composite ERP (W)	Power Density Value ($\mu\text{w}/\text{cm}^2$)	FCC General Population Limit ($\mu\text{w}/\text{cm}^2$)	% Allowable FCC General Population Limit	Composite Sector % Allowable FCC General Population Limit
A	80	Commscope 5NPXI006F	50	1900	LTE	60	2	10,819	155.6	1000	15.56	33.42%
	80	Commscope 5NPXI006F	50	2100	LTE	60	2	12,422	178.6	1000	17.86	
B	100	Commscope 5NPXI006F	50	1900	LTE	60	2	10,819	155.6	1000	15.56	33.42%
	100	Commscope 5NPXI006F	50	2100	LTE	60	2	12,422	178.6	1000	17.86	
C	120	Commscope 5NPXI006F	50	1900	LTE	60	2	10,819	155.6	1000	15.56	33.42%
	120	Commscope 5NPXI006F	50	2100	LTE	60	2	12,422	178.6	1000	17.86	
D	140	Commscope 5NPXI006F	50	1900	LTE	60	2	10,819	155.6	1000	15.56	33.42%
	140	Commscope 5NPXI006F	50	2100	LTE	60	2	12,422	178.6	1000	17.86	
E	160	Commscope 5NPXI006F	50	1900	LTE	60	2	10,819	155.6	1000	15.56	33.42%
	160	Commscope 5NPXI006F	50	2100	LTE	60	2	12,422	178.6	1000	17.86	



EBI Consulting

environmental | engineering | due diligence

Site Composite MPE %	
Carrier	MPE %
T-Mobile (Per Sector Max)	33.42%
No Additional Carriers at This Facility	N/A
Site Total MPE % :	33.42%

T-Mobile Maximum MPE Power Values (Sector A)

T-Mobile Frequency Band / Technology (Sector A)	# Channels	Watts ERP (Per Channel)	Height (feet)	Total Power Density ($\mu\text{W}/\text{cm}^2$)	Frequency (MHz)	Allowable MPE ($\mu\text{W}/\text{cm}^2$)	Calculated % MPE
T-Mobile 1900 MHz LTE	2	5409.43	50.0	155.58	1900 MHz LTE	1000	15.56%
T-Mobile 2100 MHz LTE	2	6210.85	50.0	178.63	2100 MHz LTE	1000	17.86%
						Total:	33.42%

• NOTE: Totals may vary by approximately 0.01% due to summation of remainders in calculations.



Summary

All calculations performed for this analysis yielded results that were **within** the allowable limits for general population exposure to RF Emissions.

The anticipated maximum composite contributions from the T-Mobile facility as well as the site composite emissions value with regards to compliance with FCC's allowable limits for general population exposure to RF Emissions are shown here:

T-Mobile Sector	Power Density Value (%)
Sector A:	33.42%
Sector B:	33.42%
Sector C:	33.42%
Sector D:	33.42%
Sector E:	33.42%
T-Mobile Maximum MPE % (Sector A):	33.42%
Site Total:	33.42%
Site Compliance Status:	COMPLIANT

The anticipated composite MPE value for this site assuming all carriers present is **33.42%** of the allowable FCC established general population limit sampled at the ground level. This is based upon values listed in the Connecticut Siting Council database for existing carrier emissions.

FCC guidelines state that if a site is found to be out of compliance (over allowable thresholds), that carriers over a 5% contribution to the composite value will require measures to bring the site into compliance. For this facility, the composite values calculated were well within the allowable 100% threshold standard per the federal government.

55 WEST ST

Location 55 WEST ST

Mblu 47//16.1//

Acct# 00000946

Owner STAFFORD SPRINGS
ENTERPRISES INC

Assessment \$39,060

Appraisal \$55,800

PID 3079

Building Count 1

Current Value

Appraisal			
Valuation Year	Improvements	Land	Total
2020	\$0	\$55,800	\$55,800
Assessment			
Valuation Year	Improvements	Land	Total
2020	\$0	\$39,060	\$39,060

Owner of Record

Owner STAFFORD SPRINGS ENTERPRISES INC

Sale Price \$0

Co-Owner

Certificate 1

Address PO BOX 105

Book & Page 0133/0247

STAFFORD SPRINGS, CT 06076

Sale Date 09/14/1970

Instrument

Ownership History

Ownership History					
Owner	Sale Price	Certificate	Book & Page	Instrument	Sale Date
STAFFORD SPRINGS ENTERPRISES INC	\$0	1	0133/0247		09/14/1970

Building Information

Building 1 : Section 1

Year Built: 0
Living Area: \$0
Replacement Cost: \$0
Building Percent Good:
Replacement Cost
Less Depreciation: \$0

Building Photo



(<http://images.vgsi.com/photos2/StaffordCTPhotos/000003826.JPG>)

Building Layout

(ParcelSketch.ashx?pid=3079&bid=3079)

Building Sub-Areas (sq ft) **Legend**

Building Attributes	
Field	Description
Style	Vacant Comm
Model	
Grade:	
Stories	
Occupancy	
Exterior Wall 1	
Exterior Wall 2	
Roof Structure	
Roof Cover	
Interior Wall 1	

No Data for Building Sub-Areas

Interior Wall 2	
Interior Flr 1	
Interior Flr 2	
Heat Fuel	
Heat Type:	
AC Type:	
Total Bedrooms:	
Full Bthrms:	
Half Baths:	
Extra Fixtures	
Total Rooms:	
Bath Style:	
Kitchen Style:	
Num Kitchens	
Fireplaces	
Extra Openings	
Prefab Fpl(s)	
Attic Type	
Bsmt Type	
Bsmt Garage(s)	
Fin Bsmnt	
Fn. Bmt. Qual.	
Unfin Area	
Fndtn Cndtn	
Basement	

Extra Features

Extra Features	Legend
No Data for Extra Features	

Land

Land Use

Use Code 200
 Description Comm Land
 Zone IN
 Neighborhood 502
 Alt Land Appr No
 Category

Land Line Valuation

Size (Acres) 30
 Frontage
 Depth
 Assessed Value \$39,060
 Appraised Value \$55,800

Outbuildings

Outbuildings	Legend
No Data for Outbuildings	

Valuation History

Valuation Year	Appraisal		Total
	Improvements	Land	
2021	\$0	\$55,800	\$55,800
2020	\$0	\$55,800	\$55,800
2019	\$0	\$63,000	\$63,000

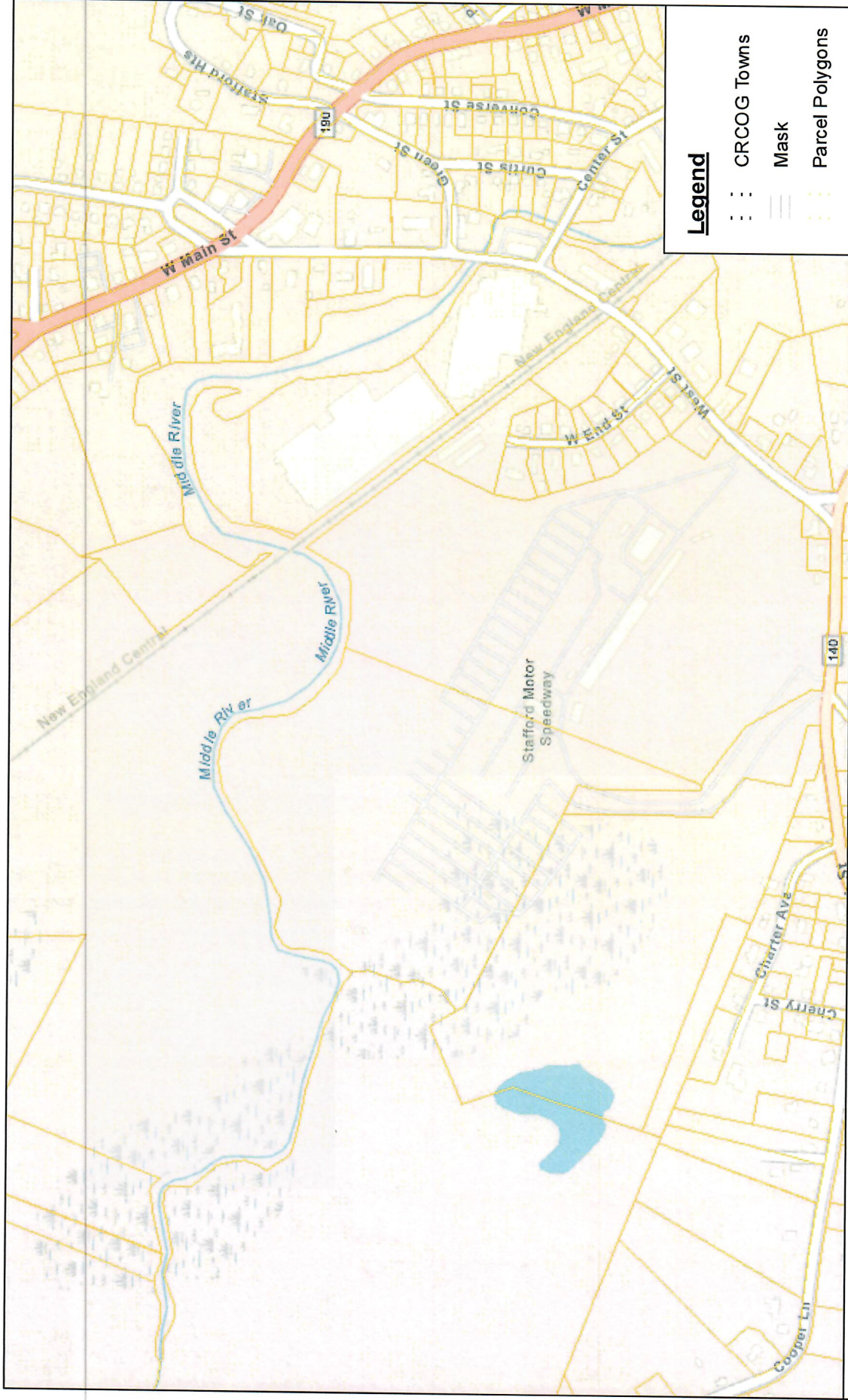
Assessment

--

Valuation Year	Improvements	Land	Total
2021	\$0	\$39,060	\$39,060
2020	\$0	\$39,060	\$39,060
2019	\$0	\$44,100	\$44,100

(c) 2022 Vision Government Solutions, Inc. All rights reserved.

ArcGIS Web Map



CRCOG
CAPITOL REGION
COUNCIL OF GOVERNMENTS
Working together for a better region.

Scale
1:9,028

CRCOG makes no claims and no warranties, expressed or implied, concerning the validity or accuracy of the GIS data presented on this map.

Created: 2/2/2022

Centerline Communications

750 W Center St #301
WEST BRIDGEWATER, MA 02379
(844) 748-8878

Centerline Disbursement

00041571

Date: 04/03/2023

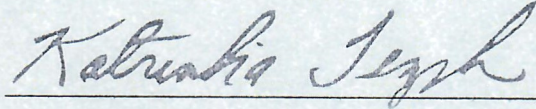
Memo: CTCLT01A-Subaru

Pay To
The Order Of CONNECTICUT SITING COUNCIL

Six Hundred Twenty Five Dollars

***625.00**

CONNECTICUT SITING COUNCIL
United States



⑈00041571⑈ ⑆011304478⑆

002922009879⑈

Centerline Communications
VEN-010420-CONNECTICUT SITING COUNCIL
Print As: CONNECTICUT SITING COUNCIL

00041571
Centerline Disbursement
B-003 9879
Date: 04/03/2023

Date	Bill #	Reference Number	Amount Due	Term Discount	Amount Paid/Applied
04/03/2023	T23112-017	00041571	\$625.00	\$0.00	\$625.00
Net Amount:					\$625.00

Centerline Communications
VEN-010420-CONNECTICUT SITING COUNCIL
Print As: CONNECTICUT SITING COUNCIL

00041571
Centerline Disbursement
B-003 9879
Date: 04/03/2023

Date	Bill #	Reference Number	Amount Due	Term Discount	Amount Paid/Applied
04/03/2023	T23112-017	00041571	\$625.00	\$0.00	\$625.00
Net Amount:					\$625.00



BARRINGTON
 200 MIDDLE HWY
 BARRINGTON, RI 02806-9998
 (800)275-8777

04/04/2023

03:45 PM

Product	Qty	Unit Price	Price
Priority Mail® Flat Rate Env Stafford Springs, CT 06076 Flat Rate Expected Delivery Date Thu 04/06/2023 Tracking #: 9505 5115 9521 3094 8483 12 Insurance Up to \$100.00 included	1		\$9.65 \$0.00
Total			\$9.65
Priority Mail® Flat Rate Env Stafford Springs, CT 06076 Flat Rate Expected Delivery Date Thu 04/06/2023 Tracking #: 9505 5115 9521 3094 8483 36 Insurance Up to \$100.00 included	1		\$9.65 \$0.00
Total			\$9.65
Priority Mail® Flat Rate Env New Britain, CT 06051 Flat Rate Expected Delivery Date Thu 04/06/2023 Tracking #: 9505 5115 9521 3094 8483 50 Insurance Up to \$100.00 included	1		\$9.65 \$0.00
Total			\$9.65
Priority Mail® Flat Rate Env New Britain, CT 06051 Flat Rate Expected Delivery Date Thu 04/06/2023 Tracking #: 9505 5115 9521 3094 8483 74 Insurance Up to \$100.00 included	1		\$9.65 \$0.00
Total			\$9.65
Grand Total:			\$28.50