



STATE OF CONNECTICUT  
CONNECTICUT SITING COUNCIL

Ten Franklin Square  
New Britain, Connecticut 06051  
Phone: (860) 827-2935  
Fax: (860) 827-2950

October 23, 2000

Peter W. van Wilgen  
Springwich Cellular Limited Partnership  
500 Enterprise Drive  
Rocky Hill, CT 06067-3900

RE: **EM-SCLP-014/109/137/130-000926** - Springwich Cellular Limited Partnership (SCLP) notice of intent to modify existing telecommunications facilities located at Brushy Plains Road, Branford; Spalding Road, Plainfield; Taugwank Spur Road, Stonington; and Horse Fence Hill Road, Southbury, Connecticut.

Dear Mr. van Wilgen:

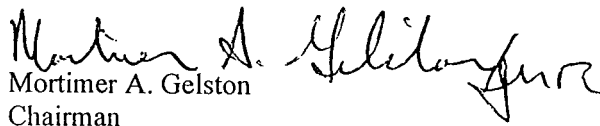
At a public meeting held on Thursday, October 19, 2000, the Connecticut Siting Council (Council) acknowledged your notice to modify these existing telecommunications facilities, pursuant to Section 16-50j-73 of the Regulations of Connecticut State Agencies.

The proposed modifications are to be implemented as specified here and in your notice dated September 26, 2000, and additional information received on October 11, 2000 and October 18, 2000. The modifications are in compliance with the exception criteria in Section 16-50j-72 (b) of the Regulations of Connecticut State Agencies as changes to existing facility sites that would not increase tower heights, extend the boundaries of the tower sites, increase noise levels at the tower site boundaries by six decibels, and increase the total radio frequencies electromagnetic radiation power densities measured at the tower site boundaries to or above the standard adopted by the State Department of Environmental Protection pursuant to General Statutes § 22a-162. These facilities have also been carefully modeled to ensure that radio frequency emissions are conservatively below State and federal standards applicable to the frequencies now used on these towers.

This decision is under the exclusive jurisdiction of the Council. Any additional change to these facilities will require explicit notice to this agency pursuant to Regulations of Connecticut State Agencies Section 16-50j-73. Such notice shall include all relevant information regarding the proposed changes with cumulative worst-case modeling of radio frequency exposures at the closest point of uncontrolled access to the tower bases, consistent with Federal Communications Commission, Office of Engineering and Technology, Bulletin 65. Any deviation from this format may result in the Council implementing enforcement proceedings pursuant to General Statutes § 16-50u including, without limitation, imposition of expenses resulting from such failure and of civil penalties in an amount not less than one thousand dollars per day for each day of construction or operation in material violation.

Thank you for your attention and cooperation.

Very truly yours,

  
Mortimer A. Gelston  
Chairman

MAG/RKE/laf

c: Honorable Anthony J. DaRos, First Selectman, Town of Branford  
Honorable Donald R. Maranell, First Selectman, Town of Stonington  
Honorable Alfio A. Candido, Jr., First Selectman, Town of Southbury  
Honorable Paul E. Sweet, First Selectman, Town of Plainfield  
Sandy M. Carter, Verizon Wireless  
Sam J. D'Agostino, PageNet, Inc.

**REVISED PAGE FOR EM-SCLP/014/109/137/130-000926**

Attached are prints showing tower profiles of the existing and planned platform arrangements.

The new power densities at the tower base for each location are shown below. Values have been recalculated to conform with FCC OET Bulletin No. 65 "worst case" scenarios." As can be seen, the power densities are well below the allowable Connecticut and ANSI standards.

- **Branford – Revised 10/18/00**

<b>Operator(Antenna Height)</b>	<b>Power Density mW/cm2</b>	<b>Standard W/cm2</b>	<b>Percent of Standard</b>
SCLP	0.0304	0.5867	5.18
Verizon	0.0639	0.5833	10.95
Town Police Department	0.0094	0.2000	4.70
Pagenet	0.0633	0.6210	10.19
<b>TOTAL</b>	<b>N/A</b>		<b>31.02%</b>

- **Plainfield**

<b>Operator(Antenna Height)</b>	<b>Power Density mW/cm2</b>	<b>Standard W/cm2</b>	<b>Percent of Standard</b>
SCLP	0.0320	0.5867	5.46
Verizon	0.0639	0.5833	10.95
Pagenet	0.0545	0.6210	8.77
<b>TOTAL</b>	<b>N/A</b>		<b>25.18%</b>

- **Stonington**

<b>Operator(Antenna Height)</b>	<b>Power Density mW/cm2</b>	<b>Standard W/cm2</b>	<b>Percent of Standard</b>
SCLP	0.0323	0.5867	5.51
Verizon	0.0639	0.5833	10.95
<b>TOTAL</b>	<b>N/A</b>		<b>16.46%</b>

**RECEIVED**

OCT 18 2000

**CONNECTICUT  
SITING COUNCIL**

FAX FROM:

**SNET MOBILITY**

500 Enterprise Drive  
3rd Floor  
Rocky Hill, Connecticut 06067-3900

Fax: (860) 513-██████ 7614

**RECEIVED**

OCT 17 2000

CONNECTICUT  
SITING COUNCIL

**TO:** BOB ERLING

**COMPANY/LOCATION** CT SITING COUNCIL

**FAX NUMBER:** 827-2950

TIME \_\_\_\_\_; \_\_\_\_\_ PAGES; DATE \_\_\_\_\_

**FROM:** PETER W. VAN WILGEN

**PHONE NUMBER:** (860) 513 - 7730

**COMMENTS:**

PLEASE CALL WITH FURTHER

QUESTIONS OR COMMENTS.

THANK YOU.

# BRANFORD - BRUSHY PLAINS ROAD

SCLP 10/17/00

## ① PAGENET

- TRANSMIT HT = 147' ± (RCV = 157')
- USE 3500 WATT POWER ("CONSERVATIVE")
- 1 CHANNEL

$$PD = \frac{1.64 \times .64 \times 1 \times 3500 \times 1000}{3.14 (30.49)^2 (147 - 6)^2}$$
$$= \underline{0.0633 \text{ mW/cm}^2}$$

$$\% \text{ OF STD} = \frac{0.0633}{0.621} \times 100\% = \underline{10.19\%}$$

## ② BRANFORD POLICE

- STD = 0.2 mW/cm<sup>2</sup> AS GIVEN IN EARLIER APPLIC.  
(→ FREQ = 300 MHz)
- USE 250 WATT POWER
- 1 CHANNEL
- TRANSMIT HT = 104'

$$PD = \frac{1.64 \times .64 \times 1 \times 250 \times 1000}{3.14 (30.49)^2 (104 - 6)^2}$$
$$= \underline{0.0094 \text{ mW/cm}^2}$$

$$\% \text{ OF STD} = \frac{0.0094}{0.2} \times 100\% = \underline{4.7\%}$$



**STATE OF CONNECTICUT**  
**CONNECTICUT SITING COUNCIL**

Ten Franklin Square  
New Britain, Connecticut 06051  
Phone: (860) 827-2935  
Fax: (860) 827-2950

October 12, 2000

Honorable Anthony J. DaRos  
First Selectman  
Town of Branford  
Town Hall  
1019 Main Street  
P. O. Box 150  
Branford, CT 06405-0150

RE: **EM-SCLP-014/109/137/130-000926** - Springwich Cellular Limited Partnership (SCLP) notice of intent to modify existing telecommunications facilities located at Brushy Plains Road, Branford; Spalding Road, Plainfield; Taugwank Spur Road, Stonington; and Horse Fence Hill Road, Southbury, Connecticut.

Dear Mr. DaRos:

The Connecticut Siting Council (Council) received this request to modify an existing telecommunications facility, pursuant to Regulations of Connecticut State Agencies Section 16-50j-72.

The Council will consider this item at the next meeting scheduled for October 19, 2000, at 2:00 p.m. in Hearing Room Two, Ten Franklin Square, New Britain, Connecticut.

Please call me or inform the Council if you have any questions or comments regarding this proposal.

Thank you for your cooperation and consideration.

Very truly yours,

A handwritten signature in black ink, appearing to read 'Joel M. Rinebold', written over a horizontal line.

Joel M. Rinebold  
Executive Director

JMR/RKE/laf

Enclosure: Notice of Intent



500 Enterprise Drive  
Rocky Hill, Connecticut 06067-3900  
Phone: (860) 513-7730  
Fax: (860) 513-7614

## Springwich Cellular Limited Partnership

**Peter W. van Wilgen**  
*Director - Real Estate Operations*

October 6, 2000

Mr. Joel M. Rinebold  
Executive Director  
Connecticut Siting Council  
10 Franklin Square  
New Britain, CT 06051

**RECEIVED**

OCT 06 2000

CONNECTICUT  
SITING COUNCIL

Re. Antenna Platform Replacement for Verizon  
In Branford, Plainfield, Stonington and Southbury.

Dear Mr. Rinebold:

In reference to our filing dated September 26, 2000, this is to confirm that the proposed antenna changes from the vertical antenna "platforms" to the standard horizontal antenna platforms are not expected to result in any significant changes in power densities at any of the above four locations.

The power densities were recalculated so that the site information would conform to calculations derived by using current methodology as per the most recent FCC guidelines in OET Bulletin No. 65, and to update the Connecticut Siting Council's records for each site.

These four locations constitute a one-time universal change in platforms for Verizon, and no other similar platform change-outs are anticipated for the foreseeable future.

Very truly yours,



500 Enterprise Drive  
Rocky Hill, Connecticut 06067-3900  
Phone: (860) 513-7730  
Fax: (860) 513-7190

**SPRINGWICH CELLULAR LIMITED PARTNERSHIP**

**Peter W. van Wilgen**  
Director of Real Estate

September 26, 2000

**RECEIVED**

SEP 26 2000

Mr. Mortimer A. Gelston, Chairman  
Connecticut Siting Council  
10 Franklin Square  
New Britain, Connecticut 06051

CONNECTICUT  
SITING COUNCIL

RE: Antenna platform replacements for Verizon at:

Brushy Plains Road, Branford, Connecticut  
Spalding Road, Plainfield, Connecticut  
Taugwank Spur Road, Stonington, Connecticut  
Horse Fence Hill Road, Southbury, Connecticut

Dear Chairman Gelston:

Verizon (formerly Bell Atlantic Mobile) presently has its antennas attached to the Springwiche Cellular Limited Partnership (SCLP) monopoles at the above locations.

The present mounting arrangements for their antennas consist of vertical pipes mounted on brackets attached to the monopole between approximately the 117 foot and 135 foot levels of the towers. The nine existing Verizon antennas are attached vertically to these pipe mounts (three per mount), resulting in reduced coverage, limitations of site capacity, and transmit/receive signal interference due to the lack of horizontal separation of the antennas.

With its increasing capacity requirements, Verizon desires to replace the existing mounting arrangement with low profile platforms located at the 110 foot level of the monopoles, which will allow the horizontal attachment of up to four directional antennas per sector, as is typical of a standard platform mount.

Please accept this letter as our notice to the Council that SCLP will be replacing the Verizon vertical mounting arrangements with low profile platforms at the above locations.

Attached are prints showing tower profiles of the existing and planned platform arrangements.

The new power densities at the tower base for each location are shown below. Values have been recalculated to conform with FCC OET Bulletin No. 65 “worst case” scenarios.” As can be seen, the power densities are well below the allowable Connecticut and ANSI standards.

- Branford

Operator(Antenna Height)	Power Density mW/cm2	Standard W/cm2	Percent of Standard
SCLP	0.0304	0.5867	5.18
Verizon	0.0639	0.5833	10.95
Town Police Department	0.0055	0.2000	2.75
Pagenet	0.0633	0.6210	10.19
<b>TOTAL</b>	<b>N/A</b>		<b>29.07%</b>

- Plainfield

Operator(Antenna Height)	Power Density mW/cm2	Standard W/cm2	Percent of Standard
SCLP	0.0320	0.5867	5.46
Verizon	0.0639	0.5833	10.95
Pagenet	0.0545	0.6210	8.77
<b>TOTAL</b>	<b>N/A</b>		<b>25.18%</b>

- Stonington

Operator(Antenna Height)	Power Density mW/cm2	Standard W/cm2	Percent of Standard
SCLP	0.0323	0.5867	5.51
Verizon	0.0639	0.5833	10.95
<b>TOTAL</b>	<b>N/A</b>		<b>16.46%</b>

- Southbury

Operator(Antenna Height)	Power Density mW/cm2	Standard W/cm2	Percent of Standard
SCLP	0.0320	0.5867	5.46
Verizon	0.0639	0.5833	10.95
Pagenet	0.0538	0.6210	8.66
<b>TOTAL</b>	N/A		<b>25.07%</b>

Should you have any questions, please feel free to contact me at the above number.

Very Truly Yours,



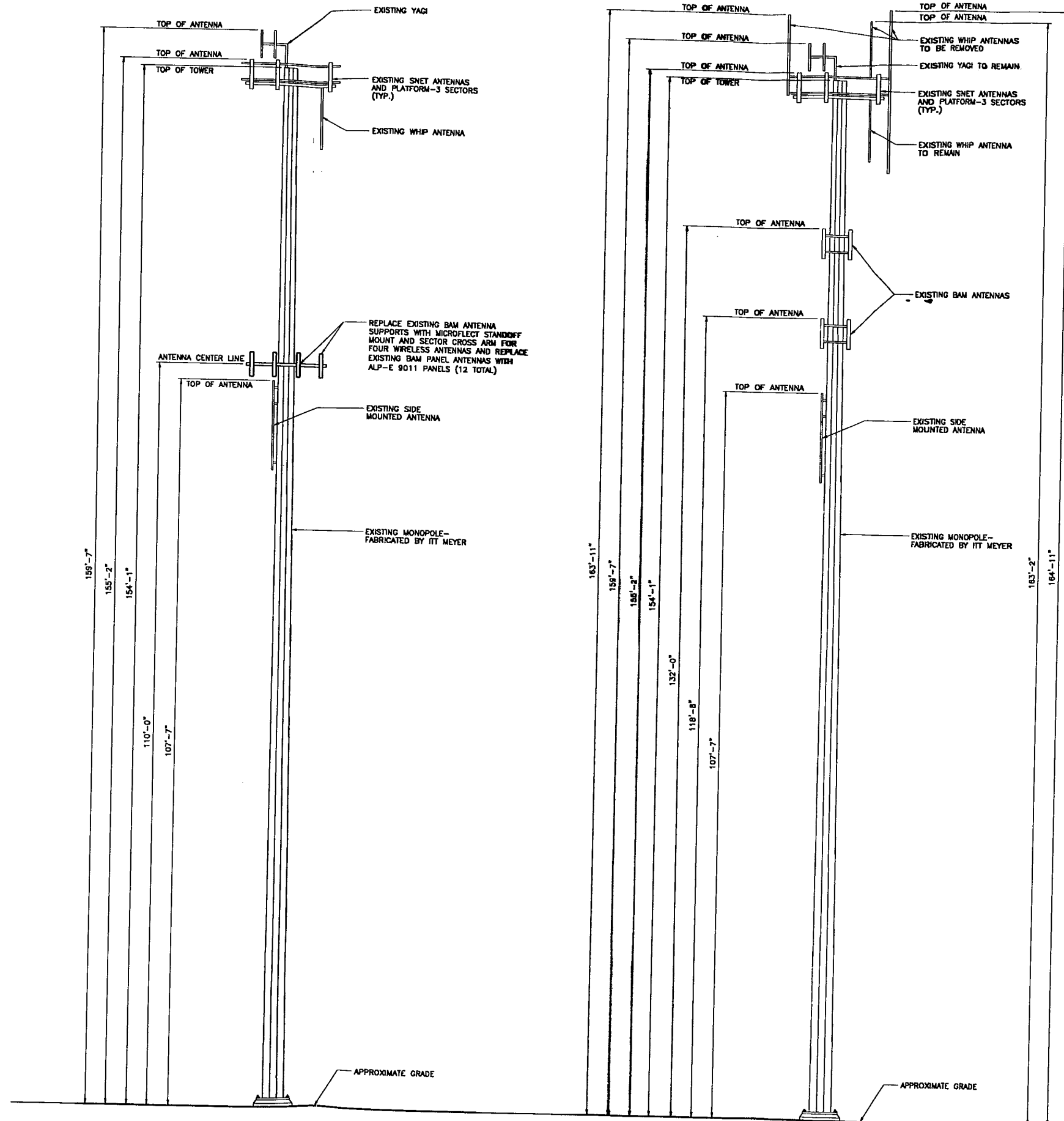
cc: First Selectman Anthony J. DaRos  
 First Selectman Alfio A. Candido, Jr.  
 First Selectman Donald R. Maranell  
 First Selectman Paul E. Sweet

EM-SCLP-014/109/137/130-000926

**RECEIVED**

OCT 11 2000

CONNECTICUT  
SITING COUNCIL



AME FROM  
**AME Group Woodland/Cyle  
A-E-S**  
500 ENTERPRISE DRIVE  
ROCKY HILL, CONNECTICUT  
1-800-328-0882

AME SEAL

PROJECT NO: F30R80416/F03

DRAWN BY: ORS

CHECKED BY:

ISSUED FOR	
05-10-00	REVIEW
05-18-00	ORINAL
05-27-00	REVISION-ORINAL

THE INFORMATION CONTAINED  
IN THIS SET OF DOCUMENTS  
IS PROPRIETARY BY NATURE.  
ANY USE OR DISCLOSURE  
OTHER THAN THAT WHICH  
RELATES TO SNET IS  
STRICTLY PROHIBITED.

**SNET TOWER  
SITE**  
BRUSH PLAINS ROAD  
BRANFORD, CONNECTICUT

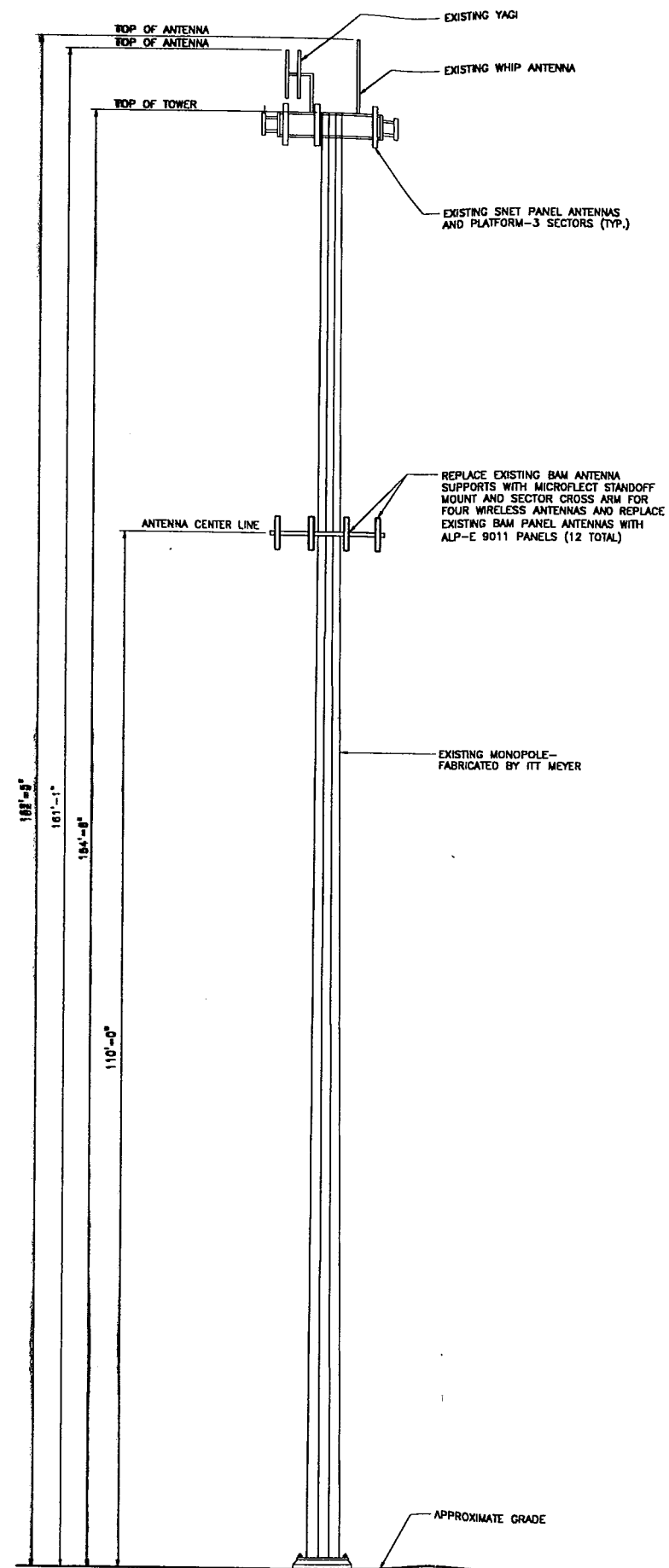
SCALE: AS NOTED

DATE: 05-10-00

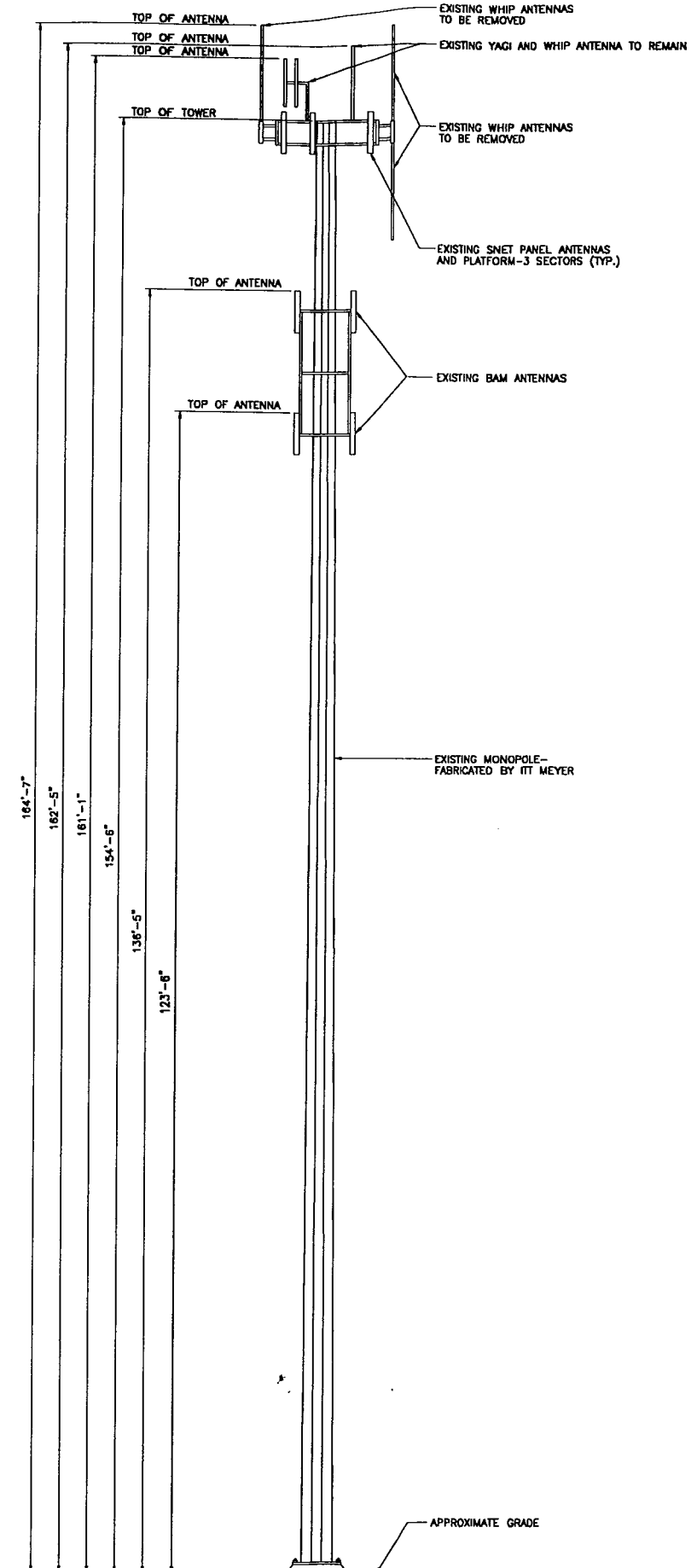
DRAWING 1 OF 1

**TOWER  
ELEVATIONS**

**A-1**



**2** MONOPOLE ELEVATION-MODIFIED  
 A-1 SCALE: 1/8"=1'-0"



**1** MONOPOLE ELEVATION-EXISTING CONDITIONS  
 A-1 SCALE: 1/8"=1'-0"



A&E FIRM  
**MRS Grainger Woodward Clyde  
 A-E-S**  
 500 ENTERPRISE DRIVE  
 ROCKY HILL, CONNECTICUT  
 1-800-529-8882

A&E SEAL

PROJECT NO: F301804.17/F03

DRAWN BY: CRS

CHECKED BY:

ISSUED FOR	
05-10-00	REVIEW
05-18-00	FINAL
08-22-00	REVISIONS-FINAL

THE INFORMATION CONTAINED IN THIS SET OF DOCUMENTS IS PROPRIETARY BY NATURE. ANY USE OR DISCLOSURE OTHER THAN THAT WHICH RELATES TO SNET IS STRICTLY PROHIBITED.

**SNET TOWER SITE**  
 45 SPAULDING ROAD  
 PLAINFIELD, CONNECTICUT

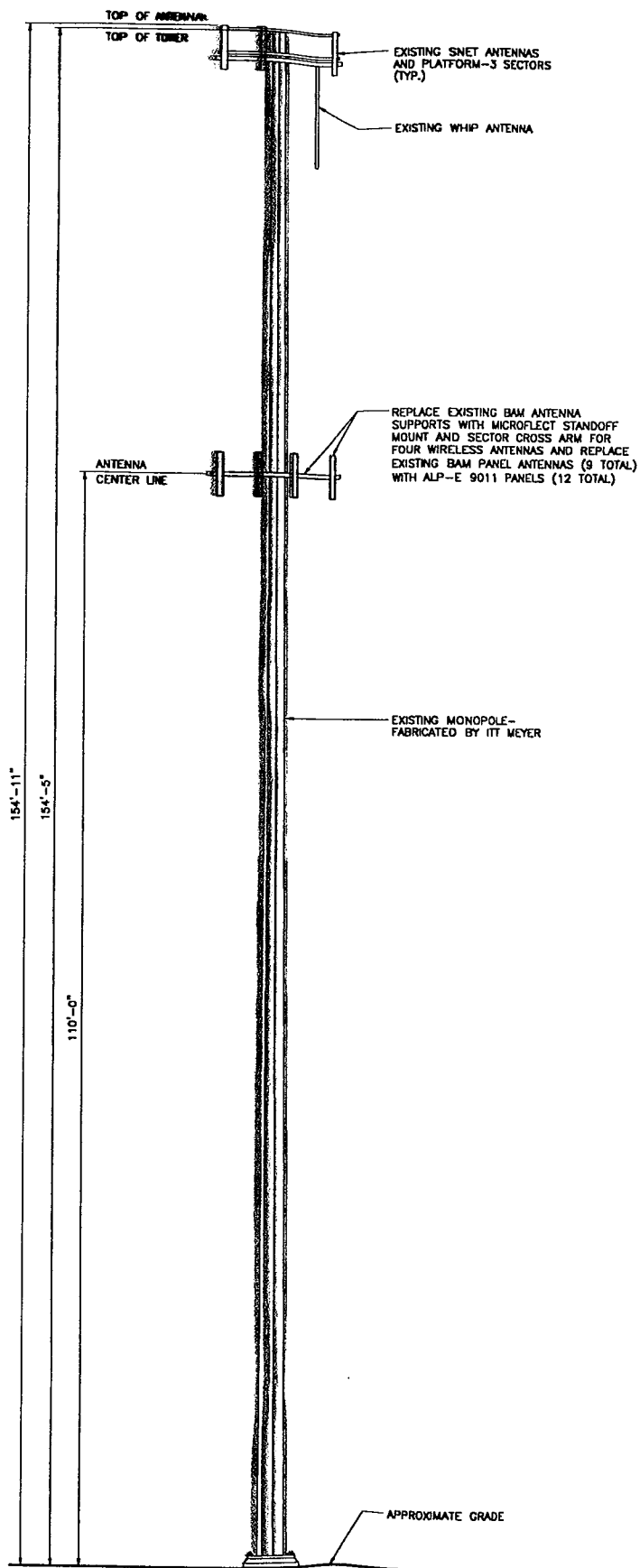
SCALE: AS NOTED

DATE: 05-10-00

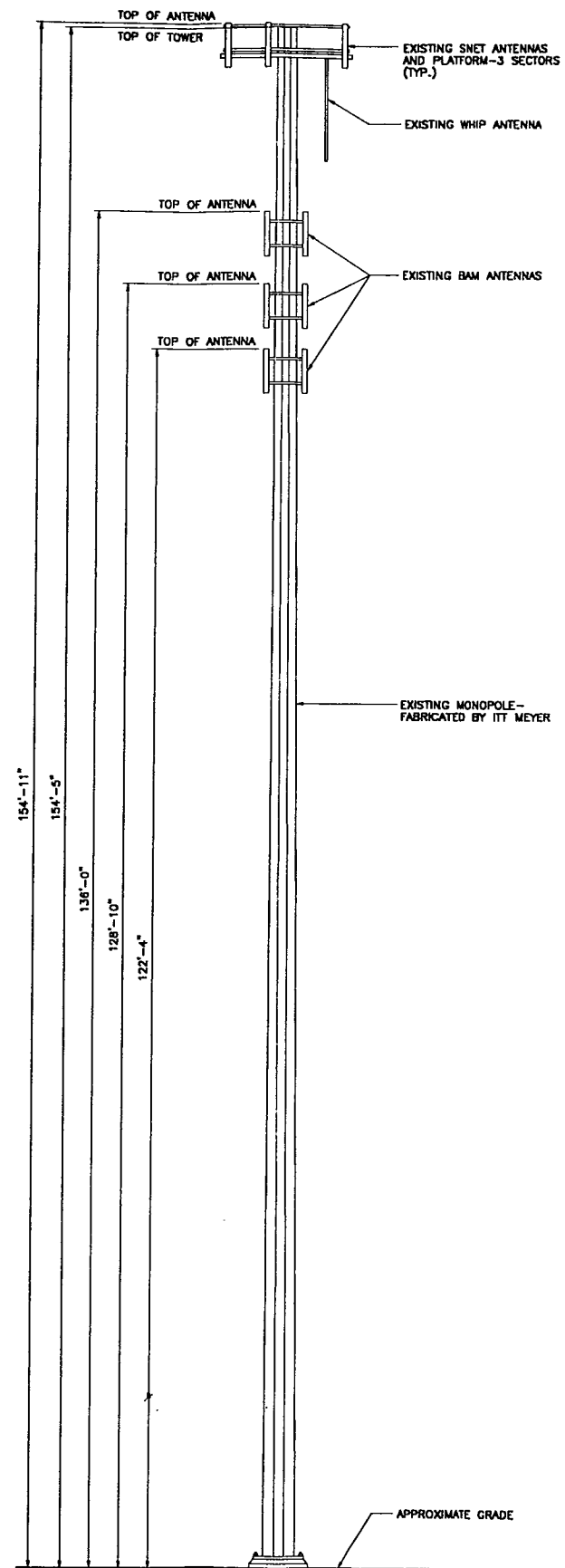
DRAWING 1 OF 1

**TOWER ELEVATIONS**

**A-1**



**2 MONOPOLE ELEVATION-MODIFIED**  
A-1 SCALE: 1/8"=1'-0"



**1 MONOPOLE ELEVATION-EXISTING CONDITIONS**  
A-1 SCALE: 1/8"=1'-0"



A&E FIRM  
**M/S Greiner Woodward Clyde**  
A-E-S  
500 ENTERPRISE DRIVE  
ROCKY HILL, CONNECTICUT  
1-(800)-629-8882

A&E SEAL

PROJECT NO: F301804.15/F03

DRAWN BY: CRS

CHECKED BY:

ISSUED FOR

05-10-00	REVIEW
05-18-00	FINAL
07-13-00	REVISIONS-FINAL

THE INFORMATION CONTAINED  
IN THIS SET OF DOCUMENTS  
IS PROPRIETARY BY NATURE.  
ANY USE OR DISCLOSURE  
OTHER THAN THAT WHICH  
RELATES TO SNET IS  
STRICTLY PROHIBITED.

**SNET TOWER  
SITE**

40 TAUGWANK SPUR ROAD  
STONINGTON, CONNECTICUT

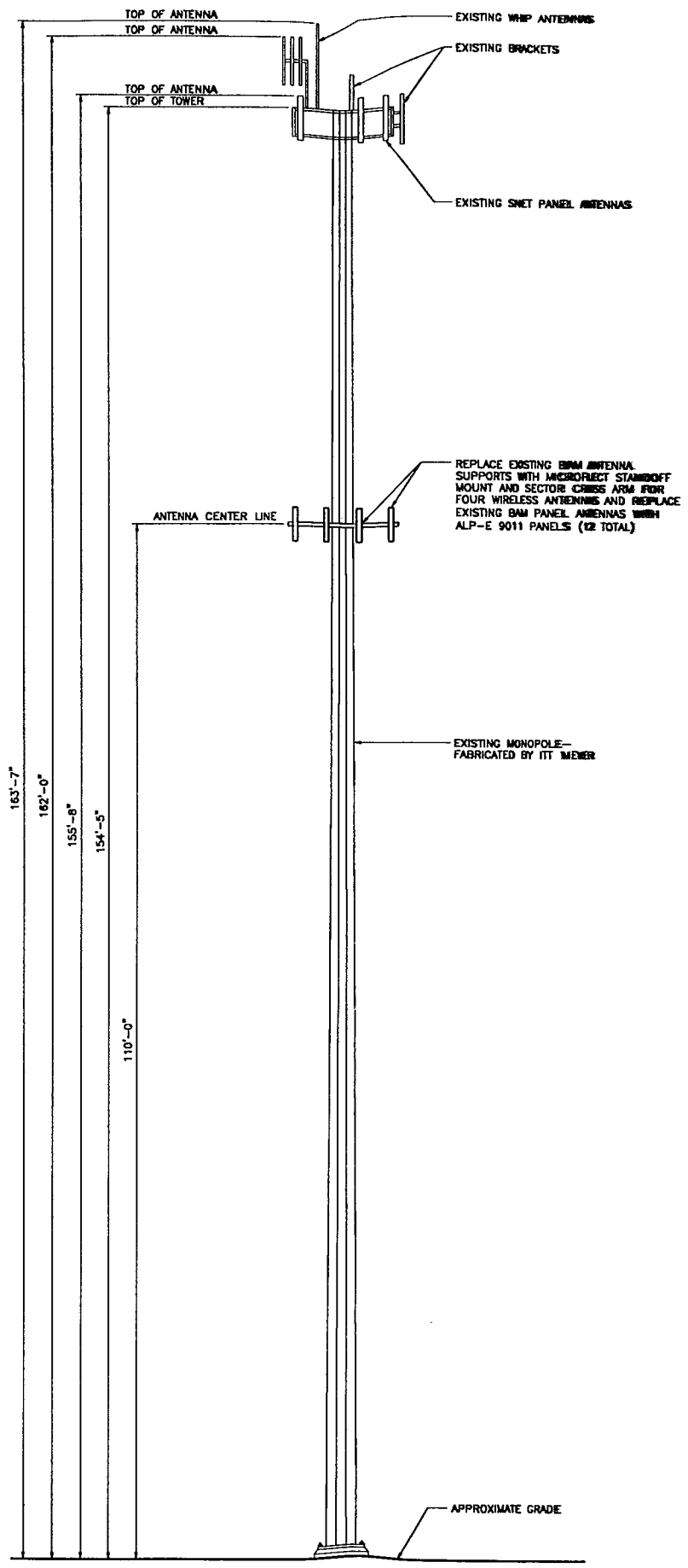
SCALE: AS NOTED

DATE: 05-10-00

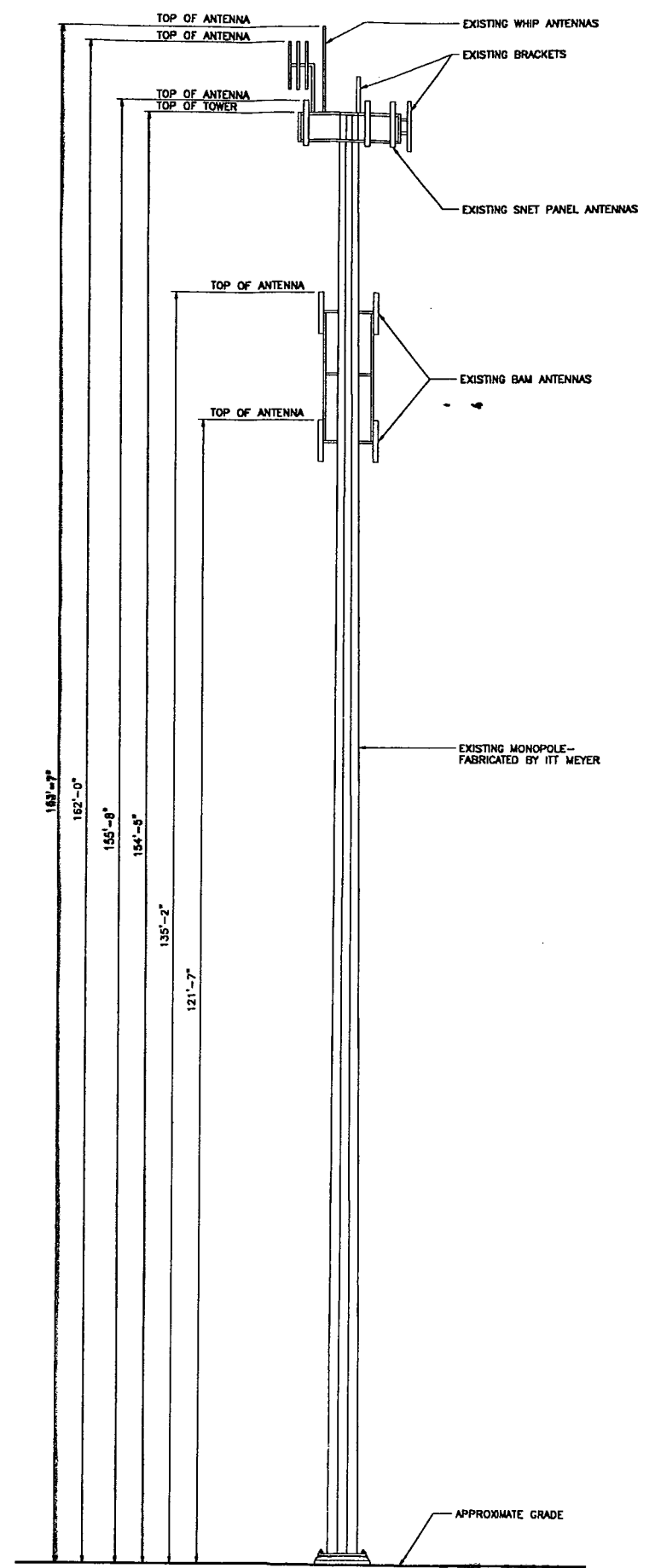
DRAWING 1 OF 1

**TOWER  
ELEVATIONS**

A-1



**2** MONOPOLE ELEVATION-MODIFIED  
A-1 SCALE: 1/8"=1'-0"



**1** MONOPOLE ELEVATION-EXISTING CONDITIONS  
A-1 SCALE: 1/8"=1'-0"



ABC FIRM  
**ABC Greater Hartford City**  
AES  
500 ENTERPRISE DRIVE  
ROCKY HILL, CONNECTICUT  
1-800-328-0882

ABC SEAL

PROJECT NO: F301804.55/F03

DRAWN BY: CRS

CHECKED BY:

ISSUED FOR	
06-01-00	REVIEW
08-22-00	REVISIONS-FINAL

THE INFORMATION CONTAINED IN THIS SET OF DOCUMENTS IS PROPRIETARY BY NATURE. ANY USE OR DISCLOSURE OTHER THAN THAT WHICH RELATES TO SNET IS STRICTLY PROHIBITED.

**SNET TOWER SITE**  
HORSE FENCE HILL ROAD  
SOUTHBRURY, CONNECTICUT

SCALE: AS NOTED

DATE: 06-01-00

DRAWING 1 OF 1

**TOWER ELEVATIONS**

**A-1**