



May 30, 2014

David Martin and
Members of the Siting Council
Connecticut Siting Council
Ten Franklin Square
New Britain, CT 06051

RE: Notice of Exempt Modification
39 Ciro Road
North Branford, CT 06471
Sprint Site #: NV2.5_CT43XC865-B
N 41° 19' 51.82"
W -72° 45' 22.22"

Dear Mr. Martin and Members of the Siting Council:

On behalf of Sprint Spectrum, SBA Communications is submitting an exempt modification application to the Connecticut Siting Council for modification of existing equipment at a tower facility located at 39 Ciro Road, North Branford, CT.

The 39 Ciro Road facility consists of a 170' MONOPOLE Tower owned and operated by SBA Properties, LLC. In order to accommodate technological changes and enhance system performance in the State of Connecticut, Sprint Spectrum plans to modify the equipment configurations at many of its existing cell sites. Please accept this letter and attachments as notification, pursuant to R.C.S.A. Section 16-50j-73, of construction which constitutes an exempt modification pursuant to R.C.S.A. Section 16-50j-72(b)(2). In compliance with R.C.S.A. Section 16-50j-73, a copy of this letter and attachments is being sent to the chief elected official of the municipality in which the affected cell site is located.

As part of Sprint's Network Vision modification project, Sprint desires to upgrade their equipment to meet the new standards of 4G technology. The new equipment will allow customers to download files and browse the internet at a high rate of speed while also allowing their phones to be compatible with the latest 4G technology.

Attached is a summary of the planned modifications, including power density calculations reflecting the change in Sprint's operations at the site along with the required fee of \$625.

The changes to the facility do not constitute modifications as defined in Connecticut General Statutes ("C.G.S.") Section 16-50i(d) because the general physical characteristics of the facility will not be



significantly changed or altered. Rather, the planned changes to the facility fall squarely within those activities explicitly provided for in R.C.S.A. Section 16-50j-72(b)(2).

1. The overall height of the structure will be unaffected.
2. The proposed changes will not extend the site boundaries. There will be no effect on the site compound other than the new equipment cabinets.
3. The proposed changes will not increase the noise level at the existing facility by six decibels or more.
4. The changes in radio frequency power density will not increase the calculated "worst case" power density for the combined operations at the site to a level at or above the applicable standard for uncontrolled environments as calculated for a mixed frequency site.

For the foregoing reasons, SBA Communications on behalf of Sprint Spectrum, respectfully submits that the proposed changes at the referenced site constitute exempt modifications under R.C.S.A. Section 16-50j-72(b)(2).

Please feel free to call me at (508) 251-0720 x 3804 with any questions you may have concerning this matter.

Thank you,

A handwritten signature in black ink, appearing to read "Kri Pelletier".

Kri Pelletier
SBA Communications Corporation
33 Boston Post Road West Suite 320
Marlborough, MA 01752
508-251-0720 x 3804 + T
508-251-1755 + F
203-446-7700 + C
kpelletier@sbsite.com



**Sprint Spectrum
Equipment Modification**

39 Ciro Road, North Branford, CT
Site number CT43XC865-G

Tower Owner: SBA Properties, LLC

Equipment Configuration: MONOPOLE Tower

Current and/or approved:

- (3) RFS APXVSP18-C-A20
- (3) Alcatel Lucent 1900 MHz RRHs
- (3) Alcatel Lucent 800 MHz RRHs
- (3) Alcatel Lucent 800 MHz Filters
- (4) RFS ACU-A20-N RETs
- (1) GPS
- (3) 1-1/4" Fiber
- (1) 1/2" Feedline

Planned Modifications:

- (3) RFS APXVTM14-C-I20
- (3) RFS APXVSP18-C-A20
- (3) Alcatel Lucent TD-RRH8x20-25 RRHs
- (3) Alcatel Lucent 1900 MHz RRHs
- (3) Alcatel Lucent 800 MHz RRHs
- (3) Alcatel Lucent 800 MHz Filters
- (4) RFS ACU-A20-N RETs
- (3) 1-1/4" Fiber
- (1) 1-1/4" Feedline

Structural Information:

The attached structural analysis demonstrates that the tower and foundation will have adequate structural capacity to accommodate the proposed modifications.

Power Density:

The anticipated Maximum Composite contributions from the Sprint facility are 0.58% of the allowable FCC established general public limit. The anticipated composite MPE value for this site assuming all carriers present is 18.67% of the allowable FCC established general public limit sampled at the ground level.

Site Composite MPE %	
Carrier	MPE %
Sprint	0.58%
AT&T	14.88%
T-Mobile	0.12%
Nextel	3.09%
Total Site MPE %	18.67%



May 30, 2014

Mr. Michael T. Paulhus
Town Manager
Town of North Branford
909 Foxon Road
North Branford CT 06471

RE: Telecommunications Facility @ 39 Ciro Road, North Branford, CT

Dear Mr. Paulhus,

In order to accommodate technological changes and enhance system performance in the State of Connecticut, Sprint Spectrum will be changing its equipment configuration at certain cell sites.

As required by Regulations of Connecticut State Agencies (R.C.S.A.) Section 16-50j-73, the Connecticut Siting Council has been notified of the changes and will review Sprint's proposal. Please accept this letter as notification under Section 16-50j-73 of construction which constitutes an exempt modification pursuant to R.C.S.A. Section 16-50j-72(b)(2).

The accompanying letter to the Siting Council fully describes Sprint's proposal for the referenced cell site. However, if you have any questions or require any further information on our plans or the Siting Council's procedures, please call me at (508) 251-0720 x 3804.

Thank you,

A handwritten signature in black ink, appearing to read "Kri Pelletier", is positioned above the typed name.

Kri Pelletier
SBA Communications Company
33 Boston Post Road West, Suite 320
Marlborough, MA 01752
508-251-0720 x 3804 + T
508-251-1755 + F
203-446-7700 + C
kpelletier@sbsite.com



May 30, 2014

Joseph J. Casagrande, Jr.
4 Lochbourne Drive
Clinton, CT 06413

RE: Telecommunications Facility @ 39 Ciro Road, North Branford, CT

Dear Mr. Casagrande,

In order to accommodate technological changes and enhance system performance in the State of Connecticut, Sprint Spectrum will be changing its equipment configuration at certain cell sites.

As required by Regulations of Connecticut State Agencies (R.C.S.A.) Section 16-50j-73, the Connecticut Siting Council has been notified of the changes and will review Sprint's proposal. Please accept this letter as notification under Section 16-50j-73 of construction which constitutes an exempt modification pursuant to R.C.S.A. Section 16-50j-72(b)(2).

The accompanying letter to the Siting Council fully describes Sprint's proposal for the referenced cell site. However, if you have any questions or require any further information on our plans or the Siting Council's procedures, please call me at (508) 251-0720 x 3804.

Thank you,

A handwritten signature in black ink, appearing to read "Kri Pelletier", is positioned above the typed name.

Kri Pelletier
SBA Communications Company
33 Boston Post Road West, Suite 320
Marlborough, MA 01752
508-251-0720 x 3804 + T
508-251-1755 + F
203-446-7700 + C
kpelletier@sbsite.com

RADIO FREQUENCY FCC REGULATORY COMPLIANCE
MAXIMUM PERMISSIBLE EXPOSURE (MPE) ASSESSMENT

Sprint Existing Facility

Site ID: CT43XC865

SBA North Branford

39 Ciro Road
North Branford, CT 06471

May 28, 2014

EBI Project Number: 62143103

May 28, 2014

Sprint
Attn: RF Engineering Manager
1 International Boulevard, Suite 800
Mahwah, NJ 07495

Re: Radio Frequency Maximum Permissible Exposure (MPE) Assessment for Site:
CT43XC865 - SBA North Branford

Site Total: 18.67% - MPE% in full compliance

EBI Consulting was directed to analyze the proposed upgrades to the existing Sprint facility located at 39 Ciro Road, North Branford, CT, for the purpose of determining whether the radio frequency (RF) exposure levels from the proposed Sprint equipment upgrades on this property are within specified federal limits.

All information used in this report was analyzed as a percentage of current Maximum Permissible Exposure (% MPE) as listed in the FCC OET Bulletin 65 Edition 97-01 and ANSI/IEEE Std C95.1. The FCC regulates Maximum Permissible Exposure in units of microwatts per square centimeter ($\mu\text{W}/\text{cm}^2$). The number of $\mu\text{W}/\text{cm}^2$ calculated at each sample point is called the power density. The exposure limit for power density varies depending upon the frequencies being utilized. Wireless Carriers and Paging Services use different frequency bands each with different exposure limits, therefore it is necessary to report results and limits in terms of percent MPE rather than power density.

All results were compared to the FCC (Federal Communications Commission) radio frequency exposure rules, 47 CFR 1.1307(b)(1) – (b)(3), to determine compliance with the Maximum Permissible Exposure (MPE) limits for General Population/Uncontrolled environments as defined below.

General population/uncontrolled exposure limits apply to situations in which the general public may be exposed or in which persons who are exposed as a consequence of their employment may not be made fully aware of the potential for exposure or cannot exercise control over their exposure. Therefore, members of the general public would always be considered under this category when exposure is not employment related, for example, in the case of a telecommunications tower that exposes persons in a nearby residential area.

Public exposure to radio frequencies is regulated and enforced in units of microwatts per square centimeter ($\mu\text{W}/\text{cm}^2$). The general population exposure limit for the cellular band (850 MHz Band) is approximately $567 \mu\text{W}/\text{cm}^2$, and the general population exposure limit for the 1900 MHz and 2500 MHz bands is $1000 \mu\text{W}/\text{cm}^2$. Because each carrier will be using different frequency bands, and each frequency band has different exposure limits, it is necessary to report percent of MPE rather than power density.

Occupational/controlled exposure limits apply to situations in which persons are exposed as a consequence of their employment and in which those persons who are exposed have been made fully aware of the potential for exposure and can exercise control over their exposure. Occupational/controlled exposure limits also apply where exposure is of a transient nature as a result of incidental passage through a location where exposure levels may be above general population/uncontrolled limits (see below), as long as the exposed person has been made fully aware of the potential for exposure and can exercise control over his or her exposure by leaving the area or by some other appropriate means.

Additional details can be found in FCC OET 65.

CALCULATIONS

Calculations were done for the proposed upgrades to the existing Sprint Wireless antenna facility located at 39 Ciro Road, North Branford, CT, using the equipment information listed below. All calculations were performed per the specifications under FCC OET 65. All calculations were performed assuming a lobe representing the maximum gain of the antenna per the antenna manufactures supplied specifications, minus 10 dB, was focused at the base of the tower. For this report the sample point is the top of a 6 foot person standing at the base of the tower.

For all calculations, all emissions were calculated using the following assumptions:

- 1) 2 channels in the 1900 MHz Band were considered for each sector of the proposed installation.
- 2) 1 channel in the 800 MHz Band was considered for each sector of the proposed installation
- 3) 2 channels in the 2500 MHz Band were considered for each sector of the proposed installation.
- 4) All radios at the proposed installation were considered to be running at full power and were uncombined in their RF transmissions paths per carrier prescribed configuration. Per FCC OET Bulletin No. 65 - Edition 97-01 recommendations to achieve the maximum anticipated value at each sample point, all power levels emitting from the proposed antenna installation are increased by a factor of 2.56 to account for possible in-phase reflections from the surrounding environment. This is rarely the case, and if so, is never continuous.
- 5) For the following calculations the sample point was the top of a six foot person standing at the base of the tower. The maximum gain of the antenna per the antenna manufactures supplied specifications minus 10 dB was used in this direction. This value is a very conservative estimate as gain reductions for these particular antennas are typically much higher in this direction.

- 6) The antennas used in this modeling are the RFS APXVSPP18-C-A20 and the RFS APXVTM14-C-I20. This is based on feedback from the carrier with regards to anticipated antenna selection. The RFS APXVSPP18-C-A20 has a 15.9 dBd gain value at its main lobe at 1900 MHz and 13.4 dBd at its main lobe for 850 MHz. The RFS APXVTM14-C-I20 has a 15.9 dBd gain value at its main lobe at 2500 MHz. The maximum gain of the antenna per the antenna manufactures supplied specifications, minus 10 dB, was used for all calculations. This value is a very conservative estimate as gain reductions for these particular antennas are typically much higher in this direction.
- 7) The antenna mounting height centerline for the proposed antennas is **137 feet** above ground level (AGL).
- 8) Emissions values for additional carriers were taken from the Connecticut Siting Council active database. Values in this database are provided by the individual carriers themselves.

All calculation were done with respect to uncontrolled / general public threshold limits

Site ID	CT43XC865 - SBA North Branford
Site Address	39 Ciro Road, North Branford, CT, 06471
Site Type	Monopole

Sector 1

Antenna Number	Antenna Make	Antenna Model	Radio Type	Frequency Band	Technology	Power Out Per Channel (Watts)	Number of Channels	Composite Power	Antenna Gain (10 db reduction)	Antenna Height (ft)	analysis height	Cable Size	Cable Loss (dB)	Additional Loss (dB)	ERP	Power Density Percentage
1a	RFS	APXVSP18-C-A20	RRH	1900 MHz	CDMA / LTE	20	2	40	1.59	137	131	1/2 "	0.5	3	25.77	0.05%
1a	RFS	APXVSP18-C-A20	RRH	850 MHz	CDMA / LTE	20	1	20	1.34	137	131	1/2 "	0.5	3	12.16	0.04%
1B	RFS	APXVTMM14-C-120	RRH	2500 MHz	CDMA / LTE	20	2	40	1.59	137	131	1/2 "	0.5	3	25.77	0.10%
Sector total Power Density Value:																0.19%

Sector 2

Antenna Number	Antenna Make	Antenna Model	Radio Type	Frequency Band	Technology	Power Out Per Channel (Watts)	Number of Channels	Composite Power	Antenna Gain (10 db reduction)	Antenna Height (ft)	analysis height	Cable Size	Cable Loss (dB)	Additional Loss (dB)	ERP	Power Density Percentage
2a	RFS	APXVSP18-C-A20	RRH	1900 MHz	CDMA / LTE	20	2	40	1.59	137	131	1/2 "	0.5	3	25.77	0.05%
2a	RFS	APXVSP18-C-A20	RRH	850 MHz	CDMA / LTE	20	1	20	1.34	137	131	1/2 "	0.5	3	12.16	0.04%
2B	RFS	APXVTMM14-C-120	RRH	2500 MHz	CDMA / LTE	20	2	40	1.59	137	131	1/2 "	0.5	3	25.77	0.10%
Sector total Power Density Value:																0.19%

Sector 3

Antenna Number	Antenna Make	Antenna Model	Radio Type	Frequency Band	Technology	Power Out Per Channel (Watts)	Number of Channels	Composite Power	Antenna Gain (10 db reduction)	Antenna Height (ft)	analysis height	Cable Size	Cable Loss (dB)	Additional Loss (dB)	ERP	Power Density Percentage
3a	RFS	APXVSP18-C-A20	RRH	1900 MHz	CDMA / LTE	20	2	40	1.59	137	131	1/2 "	0.5	3	25.77	0.05%
3a	RFS	APXVSP18-C-A20	RRH	850 MHz	CDMA / LTE	20	1	20	1.34	137	131	1/2 "	0.5	3	12.16	0.04%
3B	RFS	APXVTMM14-C-120	RRH	2500 MHz	CDMA / LTE	20	2	40	1.59	137	131	1/2 "	0.5	3	25.77	0.10%
Sector total Power Density Value:																0.19%

Site Composite MPE %	
Carrier	MPE %
Sprint	0.58%
AT&T	14.88%
T-Mobile	0.12%
Nextel	3.09%
Total Site MPE %	18.67%

Summary

All calculations performed for this analysis yielded results that were well within the allowable limits for general public Maximum Permissible Exposure (MPE) to radio frequency energy.

The anticipated Maximum Composite contributions from the Sprint facility are **0.58% (0.19% from sector 1, 0.19% from sector 2 and 0.19% from sector 3)** of the allowable FCC established general public limit considering all three sectors simultaneously sampled at the ground level.

The anticipated composite MPE value for this site assuming all carriers present is **18.67%** of the allowable FCC established general public limit sampled at 6 feet above ground level. This total composite site value is based upon MPE values listed in the Connecticut Siting Council database for existing carrier emissions.

FCC guidelines state that if a site is found to be out of compliance (over allowable thresholds), that carriers over a 5% contribution to the composite value will require measures to bring the site into compliance. For this facility, the composite values calculated were well within the allowable 100% threshold standard per the federal government.



Scott Heffernan
RF Engineering Director

EBI Consulting
21 B Street
Burlington, MA 01803



**Structural Analysis for
SBA Network Services, Inc.**

170' Monopole Tower

**SBA Site Name: North Branford East
SBA Site ID: CT04066-S-01
T-Mobile Site ID: CT43XC865**

FDH Project Number 1462HG1400

Analysis Results

Tower Components	68.1%	Sufficient
Foundation	62.4%	Sufficient

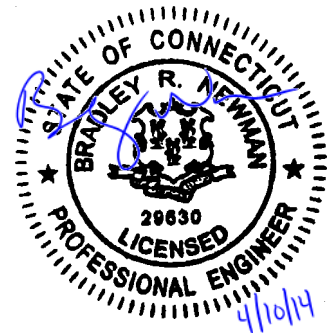
Prepared By:

Jonathan N. Rodriguez, EI
Project Engineer

Reviewed By:

Bradley R. Newman, PE
Senior Project Engineer
CT PE License No. 29630

FDH Engineering, Inc.
6521 Meriden Drive
Raleigh, NC 27616
(919) 755-1012
info@fdh-inc.com



April 10, 2014

TABLE OF CONTENTS

EXECUTIVE SUMMARY 3

 Conclusions 3

 Recommendation..... 3

APPURTENANCE LISTING 4

RESULTS 5

GENERAL COMMENTS 6

LIMITATIONS 6

APPENDIX 7

EXECUTIVE SUMMARY

At the request of SBA Network Services, Inc., FDH Engineering, Inc. performed a structural analysis of the monopole located in North Branford, CT to determine whether the tower is structurally adequate to support both the existing and proposed loads pursuant to the *Structural Standards for Steel Antenna Towers and Antenna Supporting Structures, TIA/EIA-222-F* and *2005 Connecticut State Building Code (CSBC)*. Information pertaining to the existing/proposed antenna loading, current tower geometry, foundation dimensions, geotechnical data, and member sizes was obtained from:

- Fred A. Nudd Corporation (Project No. 8471) original design drawings dated August 6, 2001
- Jaworski Geotech, Inc. (Project No. 01480G) Geotechnical Investigation Report dated July 23, 2001
- SBA Network Services, Inc.

The *basic design wind speed* per the *TIA/EIA-222-F* standards and *2005 CSBC* is 85 mph without ice and 38 mph with 3/4" radial ice. Ice is considered to increase in thickness with height.

Conclusions

With the existing and proposed antennas from Sprint in place (see **Table 1**), the tower meets the requirements of the *TIA/EIA-222-F* standards and *2005 CSBC* provided the **Recommendations** listed below are satisfied. Furthermore, provided the foundation was designed and constructed to support the original design reactions (see Fred A. Nudd Corporation Project No. 8471), the foundation should have the necessary capacity to support the existing and proposed loading. For a more detailed description of the analysis of the tower, see the **Results** section of this report.

Our structural analysis has been performed assuming all information provided to FDH Engineering, Inc. is accurate (i.e., the steel data, tower layout, existing antenna loading, and proposed antenna loading) and that the tower has been properly erected and maintained per the original design drawings.

Recommendations

To ensure the requirements of the *TIA/EIA-222-F* standards and *2005 CSBC* are met with the existing and proposed loading in place, we have the following recommendations:

1. Proposed feed line should be installed inside the monopole's shaft.
2. RRH/RRU Stipulation: The existing and proposed equipment may be installed in any configuration as determined by the client.

APPURTENANCE LISTING

The proposed and existing antennas with their corresponding cables/coax lines are shown in **Table 1**. *If the actual layout determined in the field deviates from the layout, FDH Engineering, Inc. should be contacted to perform a revised analysis.*

Table 1 - Appurtenance Loading

Existing Loading:

Antenna Elevation (ft)	Description	Coax and Lines ¹	Carrier	Mount Elevation (ft)	Mount Type
167	(3) Ericsson Air B2A B4P (3) Ericsson Air B4A B2P (3) Ericsson KRY 112 144 TMAs	(12) 1-5/8" (1) 1-5/8" Fiber	T-Mobile	167	(1) Low Profile Platform
157	(12) Decibel DB844H90-XY	(12) 1-1/4"	Nextel	157	(1) Low Profile Platform
149.5	(6) Ericsson RRU-11 RRUs (1) Raycap DC6-48-60-18-8F Surge Arrestor	(12) 1-5/8" (1) 10mm (2) DC	New Cingular	149.5	(1) Andrew MTC 3335 Collar Mount
147	(6) Powerwave 7770 (3) KMW AM-X-CD-16-65-00T (6) Powerwave LGP21401 TMAs (6) Powerwave LGP21903 Diplexers			147	(1) Low Profile Platform
137	(3) RFS APXVSP18-C-A20 (3) Alcatel Lucent 1900 MHz RRHs (3) Alcatel Lucent 800 MHz RRHs (3) Alcatel Lucent 800 MHz Filters (4) RFS ACU-A20-N RETs	(3) 1-1/4" Fiber	Sprint	137	(1) Low Profile Platform
75	(1) GPS	(1) 1/2"		75	(1) Standoff

1. Feed lines installed inside the pole's shaft unless otherwise noted.

Proposed Loading:

Antenna Elevation (ft)	Description	Coax and Lines	Carrier	Mount Elevation (ft)	Mount Type
137	(3) RFS APXVTM14-C-I20 (3) RFS APXVSP18-C-A20 (3) Alcatel Lucent TD-RRH8x20-25 RRHs (3) Alcatel Lucent 1900 MHz RRHs (3) Alcatel Lucent 800 MHz RRHs (3) Alcatel Lucent 800 MHz Filters (4) RFS ACU-A20-N RETs	(3) 1-1/4" Fiber (1) 1-1/4"	Sprint	137	(1) Low Profile Platform

RESULTS

The following yield strength of steel for individual members was used for analysis:

Table 2 - Material Strength

Member Type	Yield Strength
Tower Shaft Sections	65 ksi
Base Plate	50 ksi
Anchor Bolts	Fu = 125 ksi

Table 3 displays the summary of the ratio (as a percentage) of force in the member to their capacities. Values greater than 100% indicate locations where the maximum force in the member exceeds its capacity. *Note: Capacities up to 100% are considered acceptable.* **Table 4** displays the maximum foundation reactions.

If the assumptions outlined in this report differ from actual field conditions, FDH Engineering, Inc. should be contacted to perform a revised analysis. Furthermore, as no information pertaining to the allowable twist and sway requirements for the existing or proposed appurtenances was provided, deflection and rotation were not taken into consideration when performing this analysis.

See the **Appendix** for detailed modeling information

Table 3 - Summary of Working Percentage of Structural Components

Section No.	Elevation ft	Component Type	Size	% Capacity*	Pass Fail
L1	170 - 130	Pole	TP35.7711x24x0.25	32.4	Pass
L2	130 - 108	Pole	TP39.9796x33.7997x0.3125	52.8	Pass
L3	108 - 85	Pole	TP45.8651x39.9796x0.375	51.7	Pass
L4	85 - 41	Pole	TP55.5987x43.5798x0.4375	56.5	Pass
L5	41 - 0	Pole	TP64.5x53.041x0.4375	63.5	Pass
		Anchor Bolts	(29) 2" ϕ w/ BC = 58"	61.9	Pass
		Base Plate	68" ϕ PL x 2.25" Thick	68.1	Pass

* Capacities include a 1/3 allowable stress increase for wind per TIA/EIA-222-F standards.

Table 4 - Maximum Base Reactions

Base Reactions	Current Analysis (TIA/EIA-222-F)	Original Design (TIA/EIA-222-F)
Axial*	51 k	43 k
Shear*	32 k	46 k
Moment	3,807 k-ft	6,100 k-ft

*Per our experience with foundations of similar type, the axial and shear loading should not control the foundation analysis.

GENERAL COMMENTS

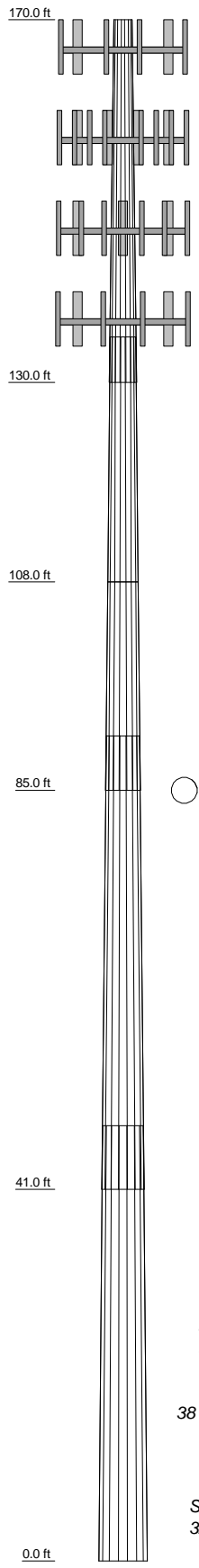
This engineering analysis is based upon the theoretical capacity of the structure. It is not a condition assessment of the tower and its foundation. It is the responsibility of SBA Network Services, Inc. to verify that the tower modeled and analyzed is the correct structure (with accurate antenna loading information) modeled. If there are substantial modifications to be made or the assumptions made in this analysis are not accurate, FDH Engineering, Inc. should be notified immediately to perform a revised analysis.

LIMITATIONS

All opinions and conclusions are considered accurate to a reasonable degree of engineering certainty based upon the evidence available at the time of this report. All opinions and conclusions are subject to revision based upon receipt of new or additional/updated information. All services are provided exercising a level of care and diligence equivalent to the standard and care of our profession. No other warranty or guarantee, expressed or implied, is offered. Our services are confidential in nature and we will not release this report to any other party without the client's consent. The use of this engineering work is limited to the express purpose for which it was commissioned and it may not be reused, copied, or distributed for any other purpose without the written consent of FDH Engineering, Inc.

APPENDIX

Section	1	2	3	4	5
Length (ft)	40.00	27.00	23.00	50.00	48.00
Number of Sides	18	18	18	18	18
Thickness (in)	0.2500	0.3125	0.3750	0.4375	0.4375
Socket Length (ft)	5.00	33.7997	6.00	7.00	53.0410
Top Dia (in)	24.0000	39.9796	39.9796	43.5798	64.5000
Bot Dia (in)	35.7711	39.9796	45.8651	55.5987	
Grade			A572-65		
Weight (K)	3.2	3.3	4.0	11.6	13.2



DESIGNED APPURTENANCE LOADING

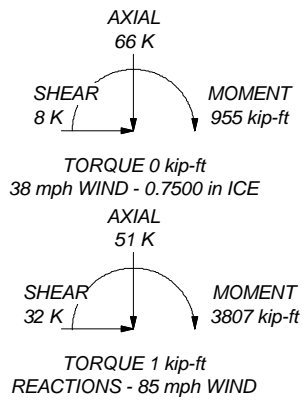
TYPE	ELEVATION	TYPE	ELEVATION
Lightning Rod	170	(2) LGP21401 TMA	147
AIR 21 B2A/B4P w/Mount Pipe	167	(2) LGP21401 TMA	147
AIR 21 B2A/B4P w/Mount Pipe	167	(1) Low Profile Platform	147
AIR 21 B2A/B4P w/Mount Pipe	167	RFS APXVSP18-C-A20 w/Mount Pipe	137
AIR 21 B4A/B2P w/Mount Pipe	167	RFS APXVSP18-C-A20 w/Mount Pipe	137
AIR 21 B4A/B2P w/Mount Pipe	167	RFS APXVSP18-C-A20 w/Mount Pipe	137
KRY 112 144 TMA	167	ALU 1900 MHz RRH	137
KRY 112 144 TMA	167	ALU 1900 MHz RRH	137
(2) Empty Mount Pipe	167	ALU 1900 MHz RRH	137
(2) Empty Mount Pipe	167	ALU 800 MHz RRH	137
(2) Empty Mount Pipe	167	ALU 800 MHz RRH	137
(1) Low Profile Platform	167	ALU 800 MHz RRH	137
(4) DB844H90-XY w/Mount Pipe	157	ALU 800 MHz Filter	137
(4) DB844H90-XY w/Mount Pipe	157	ALU 800 MHz Filter	137
(1) Low Profile Platform	157	ALU 800 MHz Filter	137
(2) RRU-11	149.5	RFS ACU-A20-N RET	137
(2) RRU-11	149.5	RFS ACU-A20-N RET	137
(2) RRU-11	149.5	(2) RFS ACU-A20-N RET	137
DC6-48-60-18-8F Surge Arrestor	149.5	APXVTM14-C-I20 w/ Mount Pipe	137
(1) Andrew MTC 3335 Collar Mount	149.5	APXVTM14-C-I20 w/ Mount Pipe	137
(2) LGP21401 TMA	147	TD-RRH8x20-25	137
(2) Diplexer - Powerwave LGP21903	147	TD-RRH8x20-25	137
(2) Diplexer - Powerwave LGP21903	147	TD-RRH8x20-25	137
(2) Diplexer - Powerwave LGP21903	147	(2) Empty Mount Pipe	137
AM-X-CD-16-65-00T w/ Mount Pipe	147	(2) Empty Mount Pipe	137
AM-X-CD-16-65-00T w/ Mount Pipe	147	(2) Empty Mount Pipe	137
AM-X-CD-16-65-00T w/ Mount Pipe	147	(1) Low Profile Platform	137
(2) 7770.00 w/ Mount Pipe	147	(1) Standoff	75
(2) 7770.00 w/ Mount Pipe	147	GPS	75
(2) 7770.00 w/ Mount Pipe	147		

MATERIAL STRENGTH

GRADE	Fy	Fu	GRADE	Fy	Fu
A572-65	65 ksi	80 ksi			

TOWER DESIGN NOTES

1. Tower is located in New Haven County, Connecticut.
2. Tower designed for a 85 mph basic wind in accordance with the TIA/EIA-222-F Standard.
3. Tower is also designed for a 38 mph basic wind with 0.75 in ice. Ice is considered to increase in thickness with height.
4. Deflections are based upon a 50 mph wind.
5. TOWER RATING: 63.5%



FDH Engineering, Inc.
 6521 Meridian Drive
 Raleigh, NC 27616
 Phone: (919)755-1012
 FAX: (919)755-1031

Job: **North Branford East, CT04066-S-01**
 Project: **1462HG1400**
 Client: **SBA Network Services, Inc.** Drawn by: **Jonathan Rodriguez** App'd:
 Code: **TIA/EIA-222-F** Date: **04/10/14** Scale: **NTS**
 Path: Dwg No. **E-1**

Daniel P. Hamm

CHECKED BY: KB

APPROVED BY: DPH

SUBMITTALS			
REV.	DATE	DESCRIPTION	BY
1	05/22/14	ISSUED FOR CONSTRUCTION	SF
0	05/13/14	ISSUED FOR CONSTRUCTION	SF

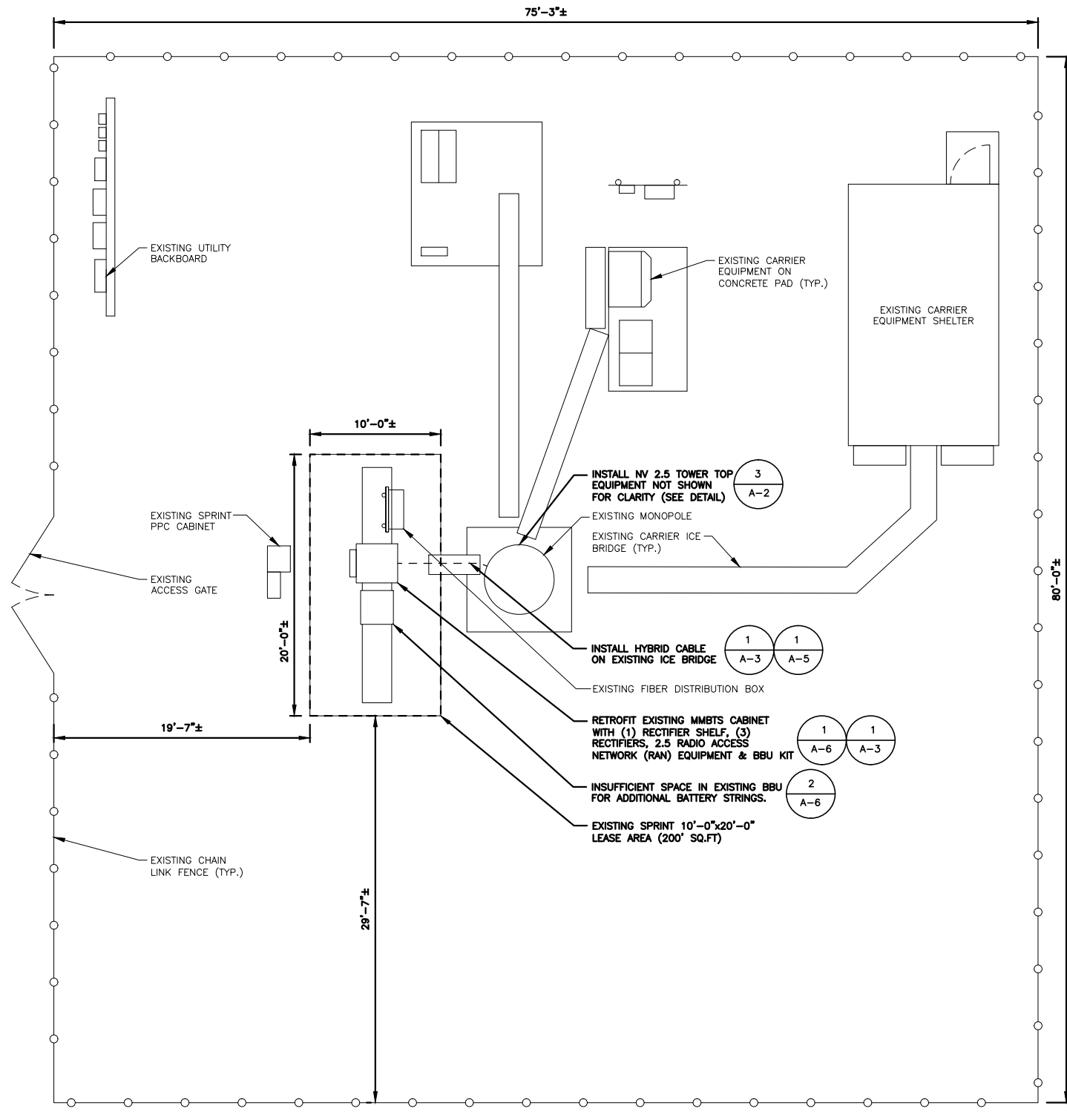
SITE NUMBER:
CT43XC865-B

SITE NAME:
SBA TOWER

SITE ADDRESS:
39 CIRO ROAD
NORTH BRANFORD, CT 06471

SHEET TITLE
COMPOUND PLAN

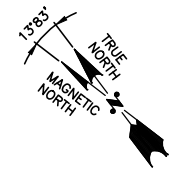
SHEET NUMBER
A-1



SOURCE: SPRINT SITE AUDIT 08-20-13

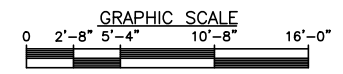
RAN EQUIPMENT PHOTO DETAIL

SCALE: N.T.S.



COMPOUND PLAN

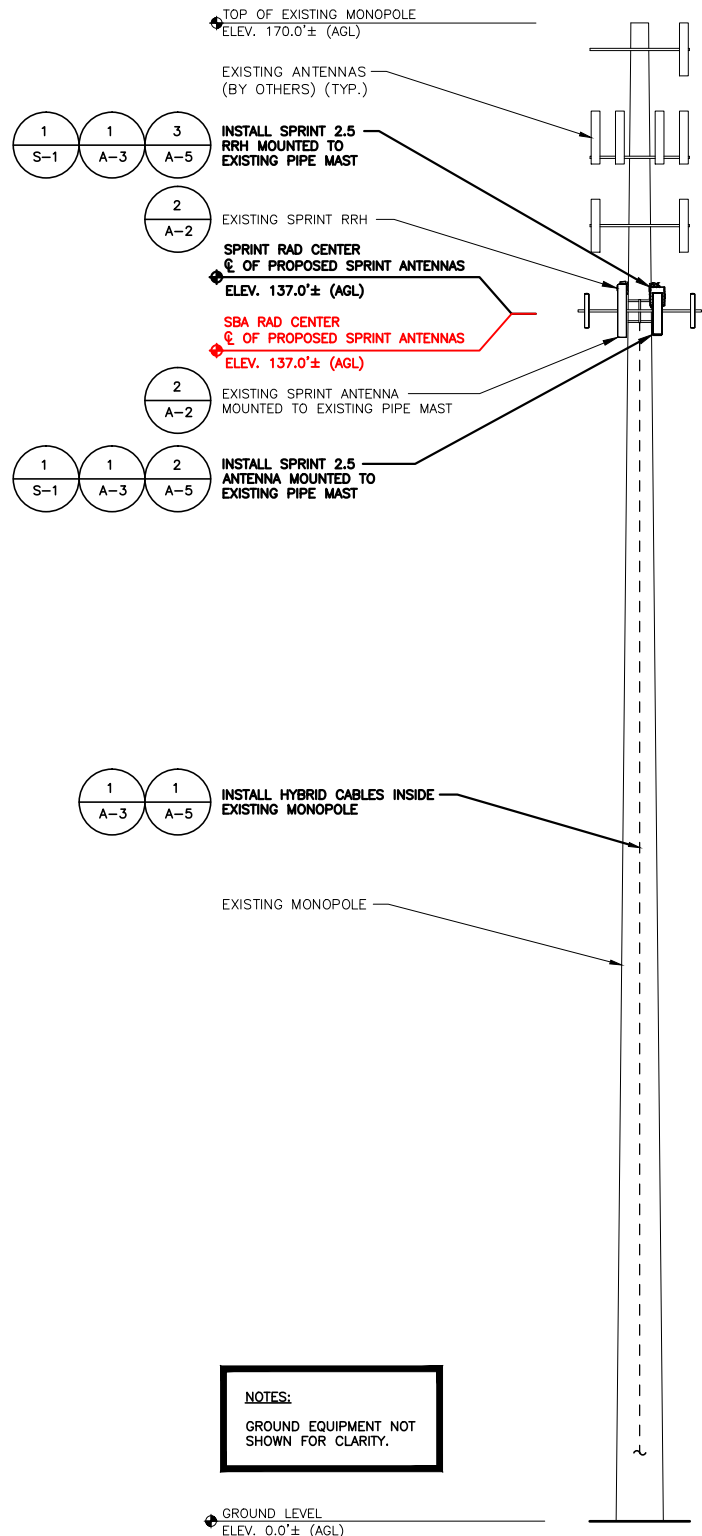
SCALE: 3/16"=1'-0"



SPECIAL CONSTRUCTION NOTE:
 SPRINT TOWER TOP WORK IS CONTINGENT ON THE FOLLOWING:
 * COMPLETION OF A GLOBAL STRUCTURAL STABILITY ANALYSIS (PROVIDED BY TOWER OWNER).
 * COMPLETION OF AN ANTENNA/RRH MOUNT STRUCTURAL ASSESSMENT (PROVIDED BY A&E VENDOR).
 * GC SHALL FURNISH, INSTALL AND COMPLETE ALL REQUIRED STRUCTURAL MODIFICATIONS AS INDICATED IN BEFORE-MENTIONED ANALYSIS AND ASSESSMENT.
 * SBA COMMUNICATIONS CORPORATION SHALL PROVIDE WRITTEN ACCEPTANCE/APPROVAL FOR THE COMPLETION OF ALL TOWER/FOUNDATION STRUCTURAL MODIFICATIONS INCLUDING (AS NECESSARY) CONTROLLED CONSTRUCTION INSPECTIONS, SHOP-DRAWING APPROVALS, MATERIALS TEST RESULTS, AND FINAL ENGINEER'S AFFIDAVIT.

NOTE:
 EXISTING AZIMUTHS FROM SPRINT
 SITE AUDIT DATED 08/20/13

NOTE:
 SPRINT RAD CENTER SHOWN IN RED TEXT BASED ON SBA-PROVIDED COLLOCATION APPLICATION, EQUIPMENT DATABASE, AND STRUCTURAL ANALYSIS. THE SBA-PROVIDED ANTENNA RAD CENTER SHALL SUPERSEDE ANY CONFLICTING INFORMATION DERIVED FROM THE SPRINT NV 2.5 RFDS.



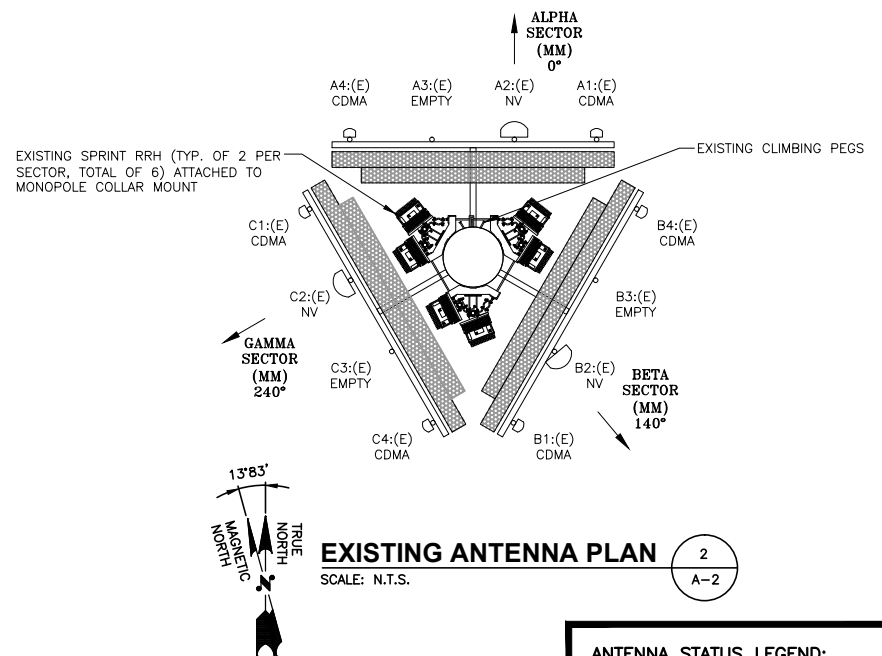
EXISTING EMPTY
 PIPE (TYP.)

EXISTING SPRINT
 EQUIPMENT

EXISTING CDMA
 ANTENNA TO BE
 REMOVED (TYP.)



EXISTING PARTIAL ELEVATION PHOTO DETAIL
 SCALE: N.T.S.



SPECIAL WORK NOTE:
 JUMPERS FROM 2.5 RRH TO 2.5
 ANTENNA CAN NOT EXCEED 15'.
 NOTIFY SPRINT CONSTRUCTION
 MANAGER OF ANY DISCREPANCY.

NOTES:
 1) VERIFY PROPOSED
 AZIMUTHS WITH RF
 ENGINEER PRIOR TO
 INSTALLATION
 2) EXISTING RRH'S NOT
 SHOWN FOR CLARITY

ANTENNA STATUS LEGEND:

EMPTY - EMPTY PIPE

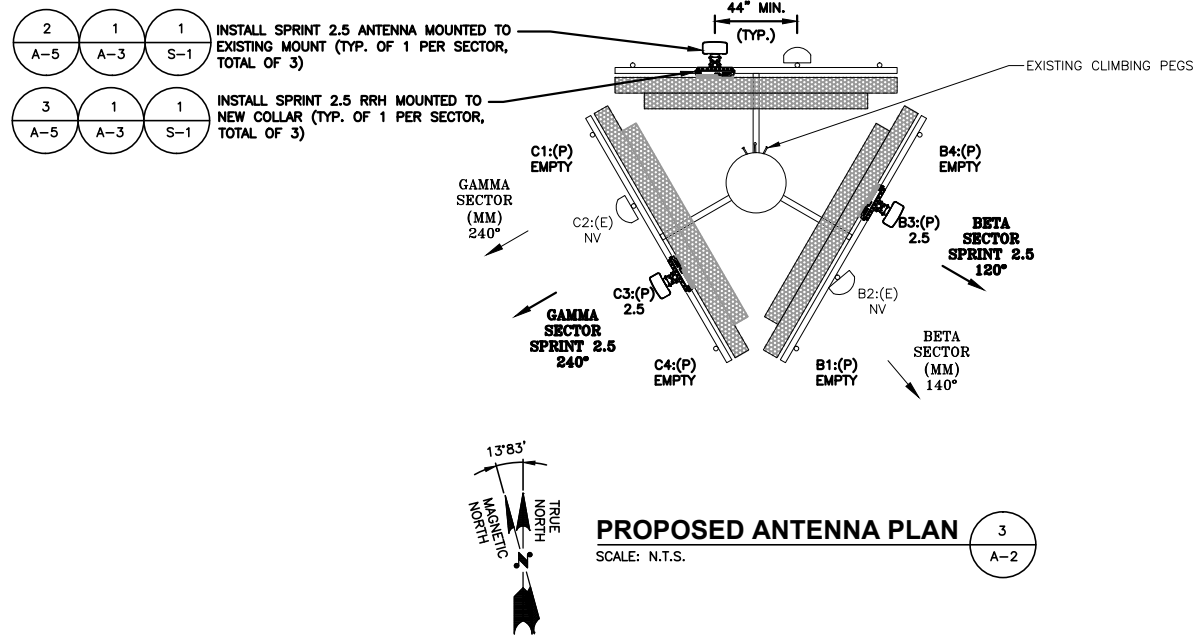
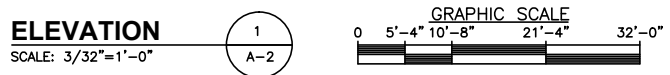
(E) - EXISTING

(P) - INSTALL

CDMA - SPRINT CDMA ANTENNA

NV - SPRINT ANTENNA MODEL
 APXVSP18-C-A20

2.5 - SPRINT ANTENNA



NOTES:
 GROUND EQUIPMENT NOT
 SHOWN FOR CLARITY.

Sprint

1 INTERNATIONAL BLVD, SUITE 800
 MAHWAH, NJ 07495
 TEL: (800) 357-7641

SBA

SBA COMMUNICATIONS CORP.
 33 BOSTON POST ROAD WEST, SUITE 320
 MARLBOROUGH, MA 01752 TEL: (508) 251-0720

Hudson Design Group

1600 OSGOOD STREET
 BUILDING 20 NORTH, SUITE 3090
 N. ANDOVER, MA 01845 TEL: (978) 557-5553 FAX: (978) 336-5586

STATE OF CONNECTICUT
 DANIEL P. HAMM
 No. 24178
 LICENSED PROFESSIONAL ENGINEER

Daniel P. Hamm

CHECKED BY: KB

APPROVED BY: DPH

SUBMITTALS

REV.	DATE	DESCRIPTION	BY
1	05/22/14	ISSUED FOR CONSTRUCTION	SF
0	05/13/14	ISSUED FOR CONSTRUCTION	SF

SITE NUMBER:
 CT43XC865-B

SITE NAME:
 SBA TOWER

SITE ADDRESS:
 39 CIRO ROAD
 NORTH BRANFORD, CT 06471

SHEET TITLE
 ELEVATION AND
 ANTENNA PLANS

SHEET NUMBER
 A-2