

October 27, 2015

Via Hand Delivery

Melanie A. Bachman
Acting Executive Director
Connecticut Siting Council
10 Franklin Square
New Britain, CT 06051

Re: **Notice of Exempt Modification**
Yale Bowl – Temporary Telecommunications Facility
New Haven, Connecticut

Dear Ms. Bachman:

Pursuant to R.C.S.A. Section 16-50j-72(d), this letter will serve as notice that Cellco Partnership d/b/a Verizon Wireless (“Cellco”) intends to install a temporary wireless telecommunications facility (a/k/a “Cell on Wheels” or “COW”) for use prior to and during this year’s Yale vs. Harvard football game scheduled for November 21, 2015, at the Yale Bowl in New Haven, Connecticut. Included in Attachment 1 is a letter from Yale University authorizing the filing of this notice. Also included in Attachment 1 is an aerial photograph showing the proposed location for the COW off Yale Avenue. In accordance with R.C.S.A. Section 16-50j-73, a copy of this filing has been sent to Toni Harp, Mayor for the City of New Haven.

The COW that Cellco intends to install at the Yale Bowl is a trailer-mounted wireless facility with a retractable 60 foot mast. (See COW photograph included in Attachment 2). Cellco will attach six (6) panel antennas (two (2) antennas per sector) to the mast at a centerline height of approximately 60 feet above ground level. The temporary facility will provide wireless services in Cellco’s cellular (850 MHz), PCS (1900 MHz), LTE (700 MHz) and AWS (2100 MHz) frequency ranges.

14243133-v1

Melanie A. Bachman
October 27, 2015
Page 2

The proposed temporary telecommunications facility satisfies the criteria set forth in R.C.S.A. Section 16-50j-72(d), as a facility that will provide temporary wireless service for an event of State-wide significance. This facility will provide additional network capacity to accommodate increased wireless voice and data needs specifically associated with the event. Cellco expects that the COW will be brought to the site on or about November 13, 2015 and will be removed on or before November 27, 2015.

The operation of the antennas on the COW will not result in a total radio frequency (RF) power density level at or above the Federal Communications Commission (FCC) adopted safety standard. The "worst-case" calculation of RF emissions for all antennas mounted at 60 feet above ground level at this temporary facility would be 90.02% of the FCC standard. (See General Power Density table included in Attachment 3). Actual RF emissions levels from this temporary facility will be substantially lower than these worst-case approximations.

Based on the foregoing, Cellco respectfully requests approval of the temporary wireless facility installation at the Yale Bowl in New Haven, Connecticut. Please feel free to contact me if you have any questions or need any additional information.

Sincerely,



Kenneth C. Baldwin

KCB/kmd
Attachments
Copy to:

Toni Harp, Mayor
Dany Bustamante
Jamie Laredo

ATTACHMENT 1



Yale University

Department of Athletics, Physical Education and Recreation

March 1, 2015

Cellco Partnership
d/b/a Verizon Wireless
180 Washington Valley Road
Bedminster, New Jersey 07921

RE: Letter of Authorization temporary facility Yale/ Harvard Football game.

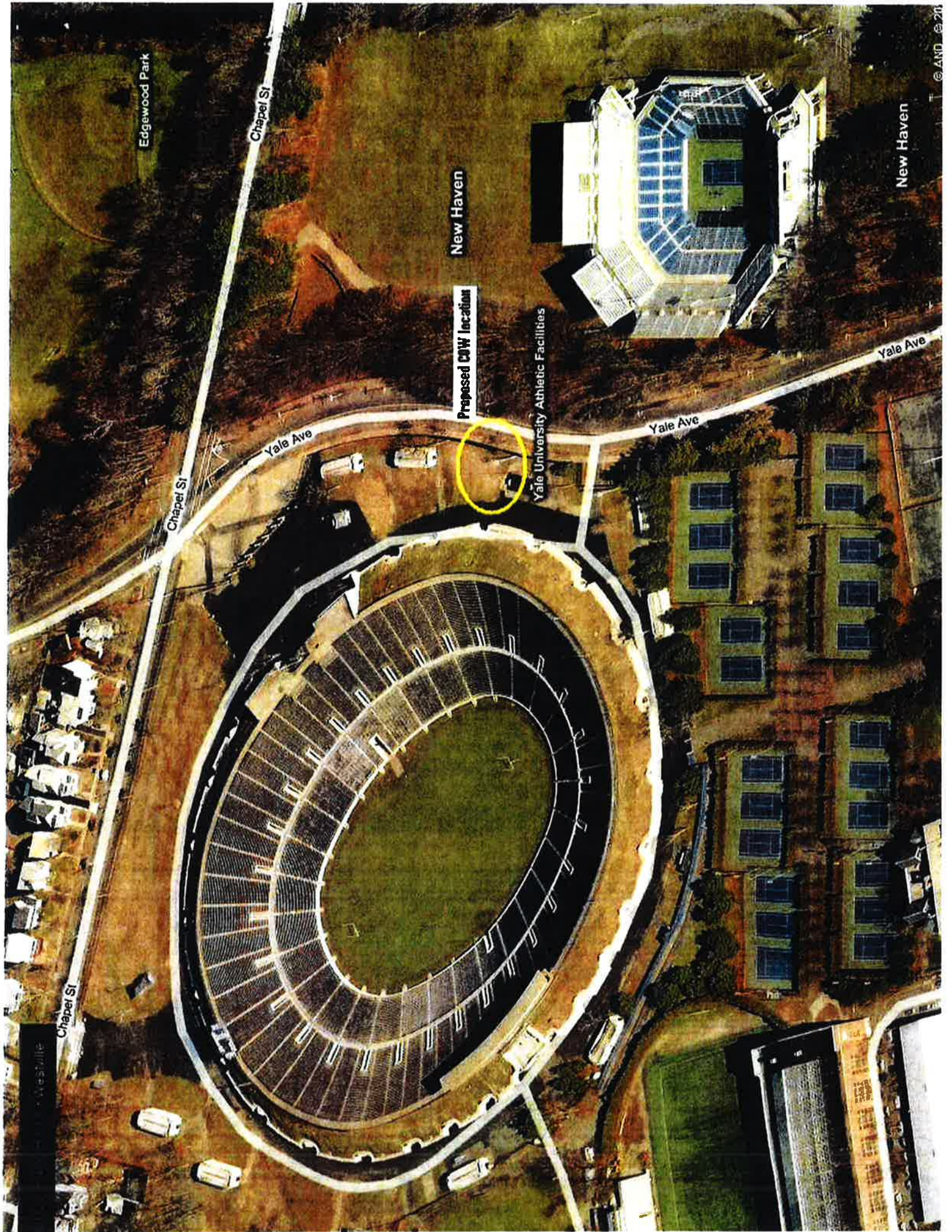
To Whom It May Concern:

As the owner of property located at the Yale Football stadium (Yale Bowl) permission is hereby granted to Cellco Partnership d/b/a Verizon Wireless ("Verizon Wireless"), to submit any applications necessary to obtain the required approvals from the Connecticut Siting Council for its proposed installation of a Cell on Wheels telecommunication temporary facility at the referenced site.

Very truly yours,

Edward Mockus
Senior Associate Athletic
Director Facilities Operations
Yale University
New Haven CT

Verizon Wireless\LOA Form -Property owner



Edgewood Park

Chapel St

New Haven

Proposed CWI Location

Yale University Athletic Facilities

Yale Ave

Yale Ave

New Haven

Chapel St

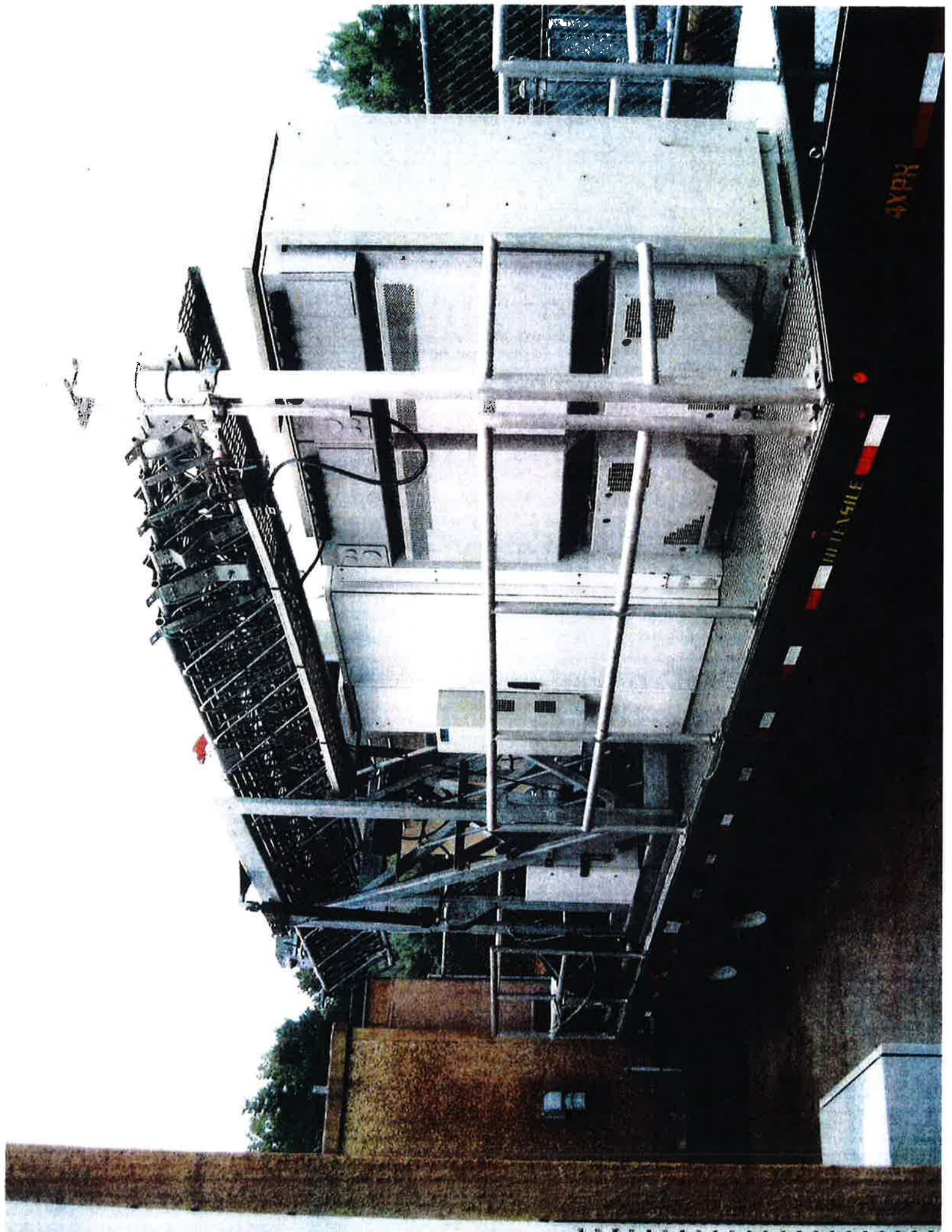
Yale Ave

Chapel St

New Haven

© AND © 201

ATTACHMENT 2



ATTACHMENT 3

General Power Density

Site Name: YALE BOWL COW (temp), CT
 Cumulative Power Density

Operator	Operating Frequency (MHz)	Number of Trans.	ERP Per Trans. (watts)	Total ERP (watts)	Distance to Target (feet)	Calculated Power Density (mW/cm ²)	Maximum Permissible Exposure* (mW/cm ²)	Fraction of MPE (%)
VZW PCS	1970	5	378	1890	60	0.1888	1.0	18.88%
VZW Cellular	869	8	260	2080	60	0.2078	0.5793333333	35.87%
VZW AWS	2145	1	1750	1750	60	0.1748	1.0	17.48%
VZW 700	746	1	886	886.0332	60	0.0885	0.4973333333	17.80%

Total Percentage of Maximum Permissible Exposure

90.02%

*Guidelines adopted by the FCC on August 1, 1996, 47 CFR Part 1 based on NCRP Report 86, 1986 and generally on ANSI/IEEE C95.1-1992

MHz = Megahertz

mW/cm² = milliwatts per square centimeter

ERP = Effective Radiated Power

Absolute worst case maximum values used.