

10 INDUSTRIAL AVE,
SUITE 3
MAHWAH NJ 07430
PHONE: 201.684.0055
FAX: 201.684.0066



June 23, 2021

Members of the Siting Council
Connecticut Siting Council
10 Franklin Square
New Britain, CT 06051

RE: Notice of Exempt Modification
69 Wheeler Street, New Haven, CT
Latitude: 41.29596944
Longitude: -72.897925
T-Mobile Site#: CTNH039A - Hardening

Dear Ms. Bachman:

T-Mobile currently maintains nine (9) antennas at the 98-foot level of the existing 98-foot Monopole at 69 Wheeler Street, New Haven, CT. The 98-foot Monopole is owned and operated by Landmark Dividend LLC and the property is owned by Whitney Realty Enterprises. T-Mobile now intends to add a 25Kw generator to an existing concrete pad within the compound.

Planned Modifications:

Ground:

Install New:

(1) Generac RD025 25KW AC Diesel Generator - 240 gallon double walled self-contained tank with fuel sensor. Requires (2) 12-minute run cycles by-weekly.

The online Connecticut Siting Council database does not include a docket or petition number for the approval of this structure, but does include the approval of Petition 753, T-Mobile's request for an extension of ten feet on the existing facility. T-Mobile's proposed modifications are consistent with that approval and a copy is attached.

Please accept this letter as notification pursuant to Regulations of Connecticut State Agencies § 16- SOj-73, for construction that constitutes an exempt modification pursuant to R.C.S.A. § 16-50j-72(b)(2). In accordance with R.C.S.A. § 16-SOj-73, a copy of this letter is being sent to Mayor - Justin Elicker, Elected Official, and Aicha Woods, Director of City Plan Department for the City of New Haven.

The planned modifications to the facility fall squarely within those activities explicitly provided for in R.C.S.A. § 16-50j-72(b)(2).

1. The proposed modifications will not result in an increase in the height of the existing structure.
2. The proposed modifications will not require the extension of the site boundary.
3. The proposed modifications will not increase noise levels at the facility by six decibels or more, or to levels that exceed state and local criteria.
4. The operation of the replacement antennas will not increase radio frequency emissions at the facility to a level at or above the Federal Communications Commission safety standard.
5. The proposed modifications will not cause a change or alteration in the physical or environmental characteristics of the site.
6. The existing structure and its foundation can support the proposed loading.

For the foregoing reasons, T-Mobile respectfully submits that the proposed modifications to the above referenced telecommunications facility constitute an exempt modification under R.C.S.A. § 16-50j-72(b)(2).

Sincerely,

Eric Breun

Transcend Wireless

Cell: 201-658-7728

Email: ebreun@transcendwireless.com

Attachments

cc: Justin Elicker - Mayor of New Haven

Aicha Woods - Director of City Plan Department

Landmark Dividends - Tower Owner

Whitney Realty Enterprises - Property Owner

ERIC BREUN
2016587728
10 INDUSTRIAL AVE
MAHWAH NJ 07430

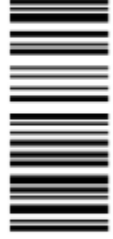
1 LBS

1 OF 1

SHIP TO:
EXECUTIVE DIRECTOR CITY PLAN DPT
AICHA WOODS
5TH FLOOR
165 CHURCH STREET
NEW HAVEN CT 06510

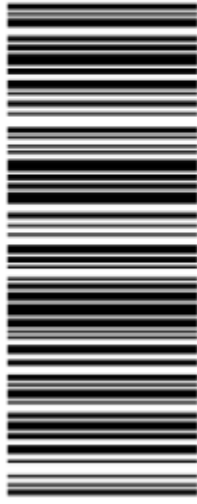


CT 064 7-01



UPS GROUND

TRACKING #: 1Z V25 742 03 9187 7019



BILLING: P/P

Reference #1: CTNH039A

XOL 21.05.18 NV45 25.0A 06/2021*



TM

ERIC BREUN
2016587728
10 INDUSTRIAL AVE
MAHWAH NJ 07430

1 LBS

1 OF 1

SHIP TO:
MAYOR JUSTIN ELICKER
2ND FLOOR
165 CHURCH STREET
NEW HAVEN CT 06510



CT 064 7-01



UPS GROUND

TRACKING #: 1Z V25 742 03 9347 1006



BILLING: P/P

Reference #1: CTNH039A

XOL 21.05.18 NV45 25.0A 06/2021*



TM

ERIC BREUN
2016587728
10 INDUSTRIAL AVE
MAHWAH NJ 07430

1 LBS

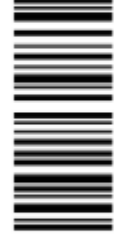
1 OF 1

SHIP TO:

WHITNEY REALTY ENTERPRISES LLC
51 LONGHINI LANE
NEW HAVEN CT 06519



CT 064 7-01



UPS GROUND

TRACKING #: 1Z V25 742 03 9268 7026



BILLING: P/P

Reference #1: CTNH039A

XOL 21.05.18 NV49 25.0A 06/2021*



TM

ERIC BREUN
2016587728
10 INDUSTRIAL AVE
MAHWAH NJ 07430

1 LBS

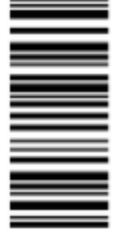
1 OF 1

SHIP TO:

WHEELER ST CT
LANDMARK DIVIDENDS
SUITE 500
400 CONTINENTAL BOULEVARD
EL SEGUNDO CA 90245

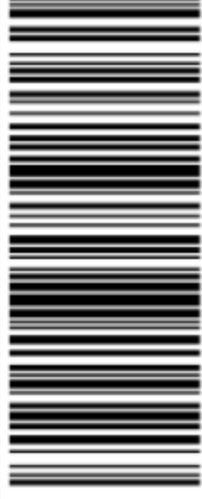


CA 908 9-50



UPS GROUND

TRACKING #: 1Z V25 742 03 9901 4132



BILLING: P/P

Reference #1: CTNH039A

XOL 21.05.18 NV49 25.0A 06/2021*



TM

69 WHEELER ST

[Sales](#)

[Print](#)

[Map It](#)

Location	69 WHEELER ST	Mblu	077/ 0975/ 00200/ /
Acct#	077 0975 00200	Owner	WHITNEY REALTY ENTERPRISES LLC
Assessment	\$269,523	Appraisal	\$385,033
PID	3459	Building Count	1

Current Value

Appraisal			
Valuation Year	Improvements	Land	Total
2019	\$254,933	\$130,100	\$385,033
Assessment			
Valuation Year	Improvements	Land	Total
2019	\$178,453	\$91,070	\$269,523

Owner of Record

Owner	WHITNEY REALTY ENTERPRISES LLC	Sale Price	\$0
Co-Owner		Certificate	
Address	51 LONGHINI LANE	Book & Page	8954/ 126
	NEW HAVEN, CT 06519	Sale Date	03/01/2013
		Instrument	3

Ownership History

Ownership History					
Owner	Sale Price	Certificate	Book & Page	Instrument	Sale Date
WHITNEY REALTY ENTERPRISES LLC	\$0		8954/ 126	3	03/01/2013
ELMER LAYDON SPRAY TRUST	\$0		8826/ 20	25	05/04/2012
LAYDON ELMER F & WILLIAM M	\$0		2868/ 345		09/11/1980

Building 1 : Section 1

Year Built: 1920
Living Area: 8,816
Replacement Cost: \$444,431
Building Percent Good: 60
Replacement Cost
Less Depreciation: \$266,700

Building Attributes	
Field	Description
Style:	Warehouse
Model	Ind/Lg Com
Grade	Above Average
Stories:	2
Occupancy	1.00
Exterior Wall 1	Brick
Exterior Wall 2	
Roof Structure	Flat
Roof Cover	T&G/Rubber
Interior Wall 1	Minim/Masonry
Interior Wall 2	
Interior Floor 1	Concr-Finished
Interior Floor 2	
Heating Fuel	Oil/Gas
Heating Type	FA/HW/ST
AC Type	None
Struct Class	
Bldg Use	IND WHSES MDL-96
Total Rooms	
Total Bedrms	00
Total Baths	0
NBHD Code	
1st Floor Use:	4010
Heat/AC	NONE
Frame Type	MASONRY
Baths/Plumbing	AVERAGE
Ceiling/Wall	CEIL & MIN WL

Building Photo**Building Layout**

Building Sub-Areas (sq ft)			Legend
Code	Description	Gross Area	Living Area
BAS	First Floor	7,656	7,656
AOF	Office	1,160	1,160
		8,816	8,816

Extra Features

Extra Features				Legend
Code	Description	Size	Value	Bldg #
MEZ1	MEZZANINE-UNF	250.00 S.F.	\$1,900	1

Land

Land Use

Use Code 4010
 Description IND WHSES MDL-06 ⓘ
 Zone IH
 Neighborhood IND5
 Alt Land Appr No
 Category

Land Line Valuation

Size (Acres) 1.3
 Frontage 1
 Depth 0
 Assessed Value \$91,070
 Appraised Value \$130,100

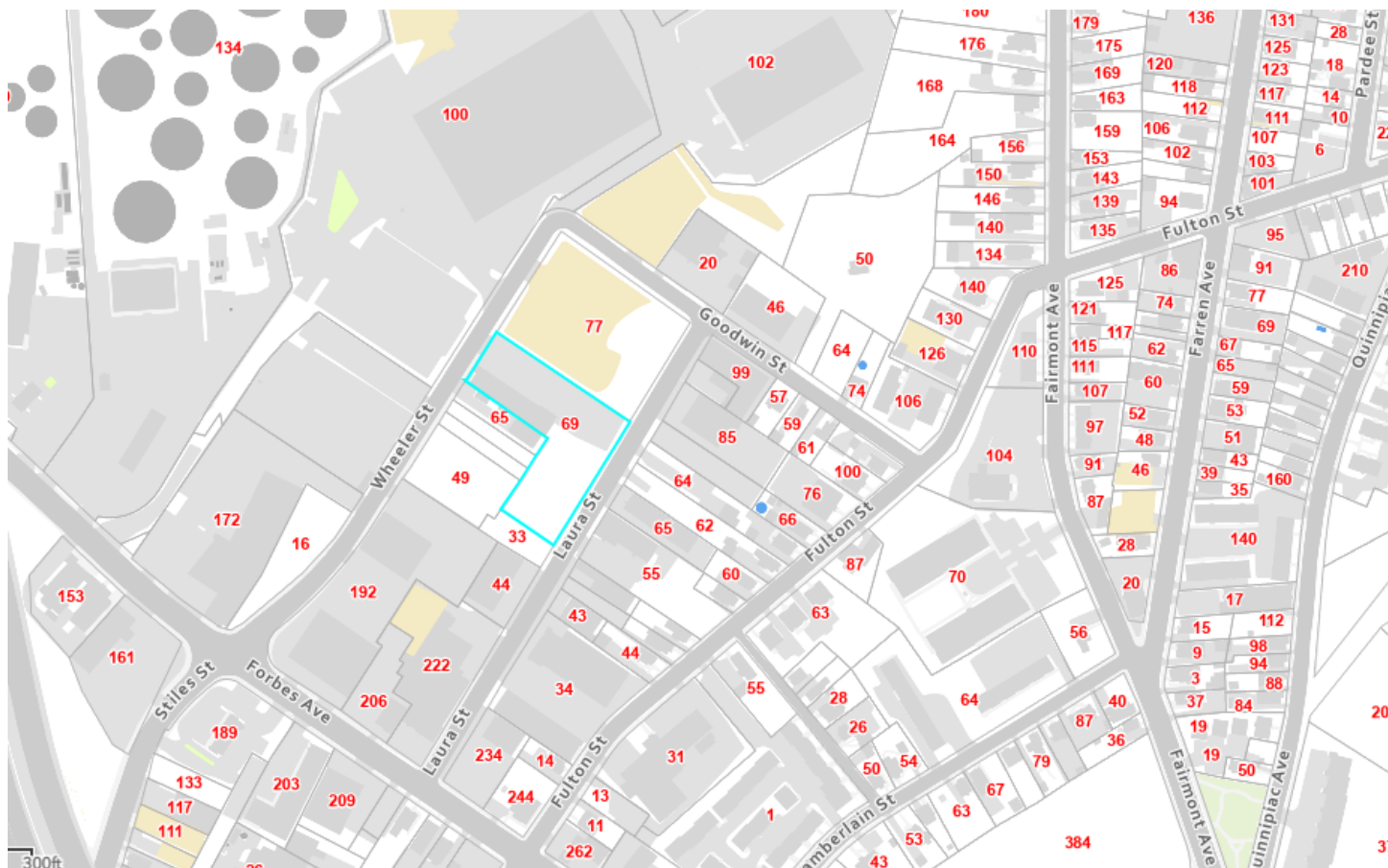
Outbuildings

Outbuildings						Legend
Code	Description	Sub Code	Sub Description	Size	Value	Bldg #
PAV1	PAVING-ASPHALT			11760.00 S.F.	\$24,100	1

Valuation History

Appraisal			
Valuation Year	Improvements	Land	Total
2019	\$254,933	\$130,100	\$385,033
2018	\$254,933	\$130,100	\$385,033
2017	\$292,700	\$130,100	\$422,800

Assessment			
Valuation Year	Improvements	Land	Total
2019	\$178,453	\$91,070	\$269,523
2018	\$178,453	\$91,070	\$269,523
2017	\$204,890	\$91,070	\$295,960



PETITION NO. 753 - Omnipoint Communications, Inc. (T-Mobile) petition for a declaratory ruling that no Certificate of Environmental Compatibility and Public Need is required for the construction of a ten foot (10') extension to an existing wireless communication monopole located at 69 Wheeler Street, **New Haven**, Connecticut. [Staff Report](#). **Approved 1/25/06.**

Petition No. 753
Omnipoint/T-Mobile
New Haven, Connecticut
Staff Report
January 13, 2006

T-Mobile is seeking approval to add a ten-foot extension onto an existing 88-foot tall monopole located at 69 Wheeler Street in New Haven.

Council member Gerry Heffernan and staff member David Martin conducted the field review for this petition. Christine Farrell and Bill Abbott represented T-Mobile.

The existing monopole is located on the side of an industrial building and has three carriers at centerline heights of 88, 78, and 68 feet. T-Mobile wants to install antennas on the pole to cover an existing gap along I-95 and the Q bridge. T-Mobile would need to add ten feet onto the existing pole to enable its antennas to achieve its coverage objectives. T-Mobile would install six antennas on a low-profile platform. With T-Mobile's antennas installed at the top of the ten-foot extension, the antennas would extend to an overall height of 101 feet AGL.

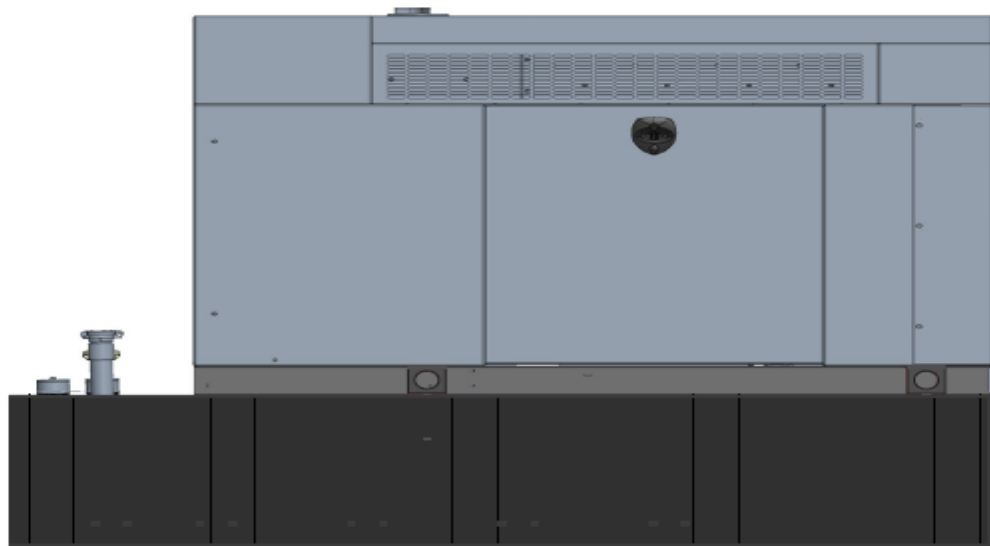
The pole's base plate would need to be reinforced to support the proposed extension. Engineering plans for the required reinforcement were submitted as part of the petition. T-Mobile's equipment and battery cabinets would fit inside an existing fenced compound.

Staff calculates that the power density of all four carriers on this monopole would equal 0.3802 mW/cm² or 55.12% of the FCC standard for Maximum Permissible Exposure.

The site is located in a heavily industrialized area of New Haven, two blocks north of I-95 and just east of the Quinnipiac River. The addition of a ten-foot extension with antennas attached should have little discernable impact on the surrounding neighborhood.

Generac RD025 Design Document

Diesel, AC, 25kW External Fill Tank Model#7192-0 SKU#33651



The following are responsible for this project document:

Kevin Smith

SR. Engineer (770) 256-3594

Project Design Spec Revision	1.0	Last Date:08/23/2018	5/14/2018
Final doc URL (~Dnnnnn):			
Location	Use the InfoRouter Search (Advanced) putting the Document ID (nnnnnn without the D) to find the location of the master document.		
Template URL:	http://docs.eng.t-mobile.com/InfoRouter/docs/~D423750 Slightly updated 1/2011		

Table of Contents

1	Introduction / Project Summary	3
1.1	Purpose of Project	3
1.2	Feature Description	3
1.3	Dimensions	3
2	Fuel Tanks.....	4
3	RXSC200A3 ATS/ Controller	4
3.1	Hardware	4
4	Architecture/Alarms.....	7
4.1	Interfaces and Alarming	7
5	Regulatory Requirements	9
6	Configuration/Diagrams	9
7	Maintenance.....	14

1 Introduction / Project Summary

1.1 Purpose of Project

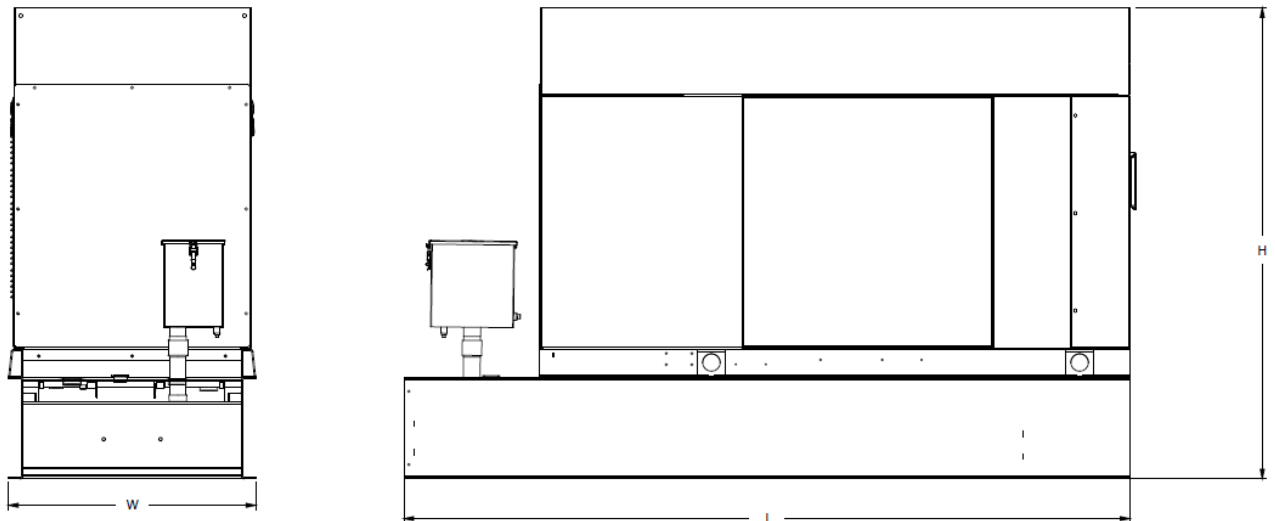
T-Mobile's nationwide cell site hardening plan is providing a refuellable backup power system capable of powering a site for a minimum of 48 hours before refueling is required. The purpose of this project is to give T-Mobile customers reliable service during power outages and provide a sufficient layer of coverage. This design document is for Generac's RD025 model#7192-0, which is a Diesel AC generator with a capacity of 25kW.

1.2 Feature Description

The Generac RD025 is a 25kW AC, diesel generator is one of the generators selected as part of the T-Mobile RFP in support of the nationwide cell site hardening plan. The RD025 has a Level 2 acoustic enclosure, 3 phase sensing, and $\pm 0.25\%$ digital voltage regulation. It is equipped with RS232, RS485 and canbus remote ports and Evolution control panel. It is also equipped with a automatic transfer switch, the RXSC200A3 (Automatic Transfer Switch) Controls the process of transferring commercial AC power and generator power. The RXSC200A3 is a 200Amp, switch that is programmed to perform engine test runs and also has adjustable engine run time capabilities. For RXSC200A3 Owners Manual and full feature descriptions [LINK](#)

1.3 Dimensions

The dimensions of a level 2 Acoustic Enclosure L x W x H in inches 103.4 x 35 x 91.7. T-Mobile requires a 36-inch radius around the generator that will cover the 18" door swing on the generator.

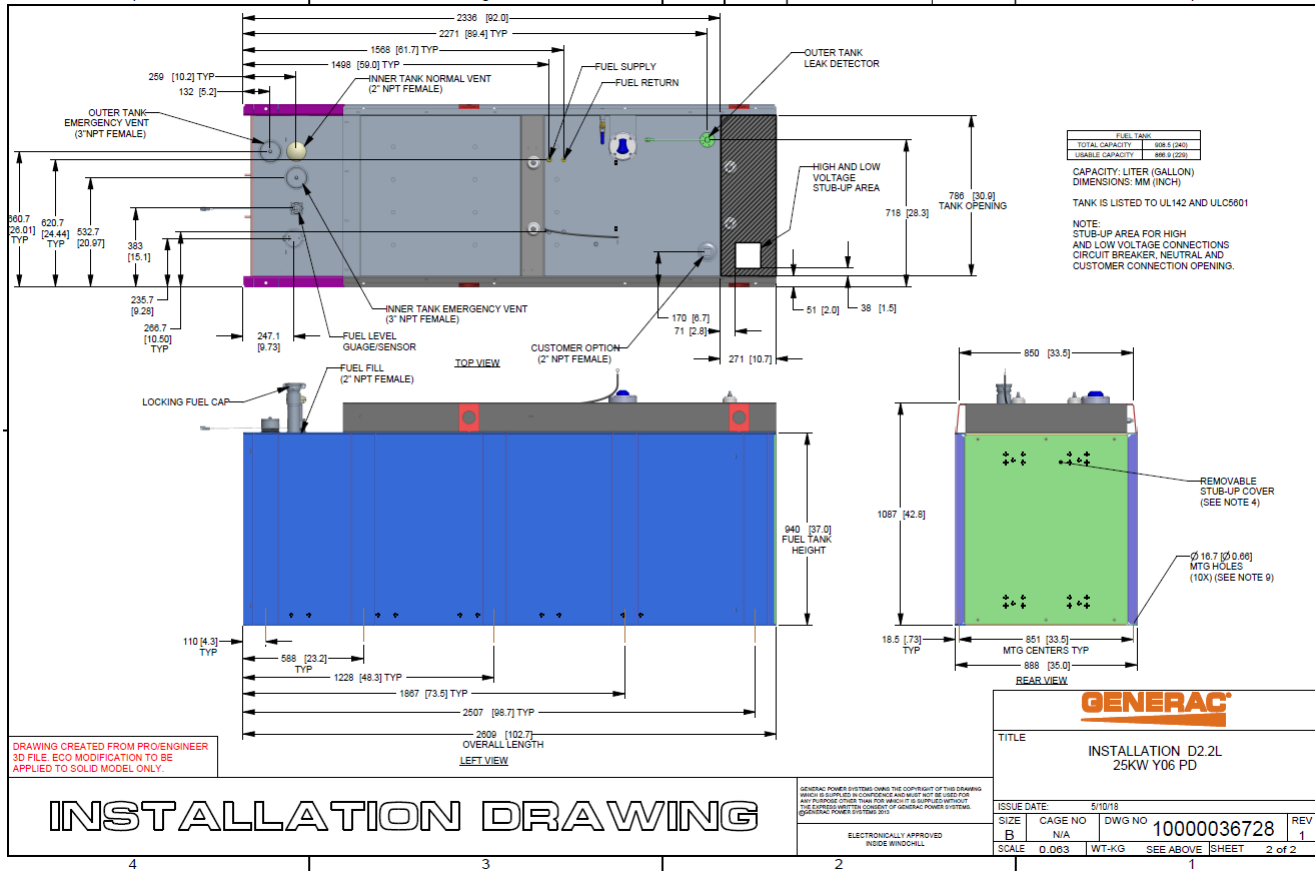


Weights and Dimensions

Unit Weight - lbs	Unit Weight with Skid - lbs	Dimensions (L x W x H) - in
2,123	2,161	103.4 x 35.0 x 73.8

2 Fuel Tanks

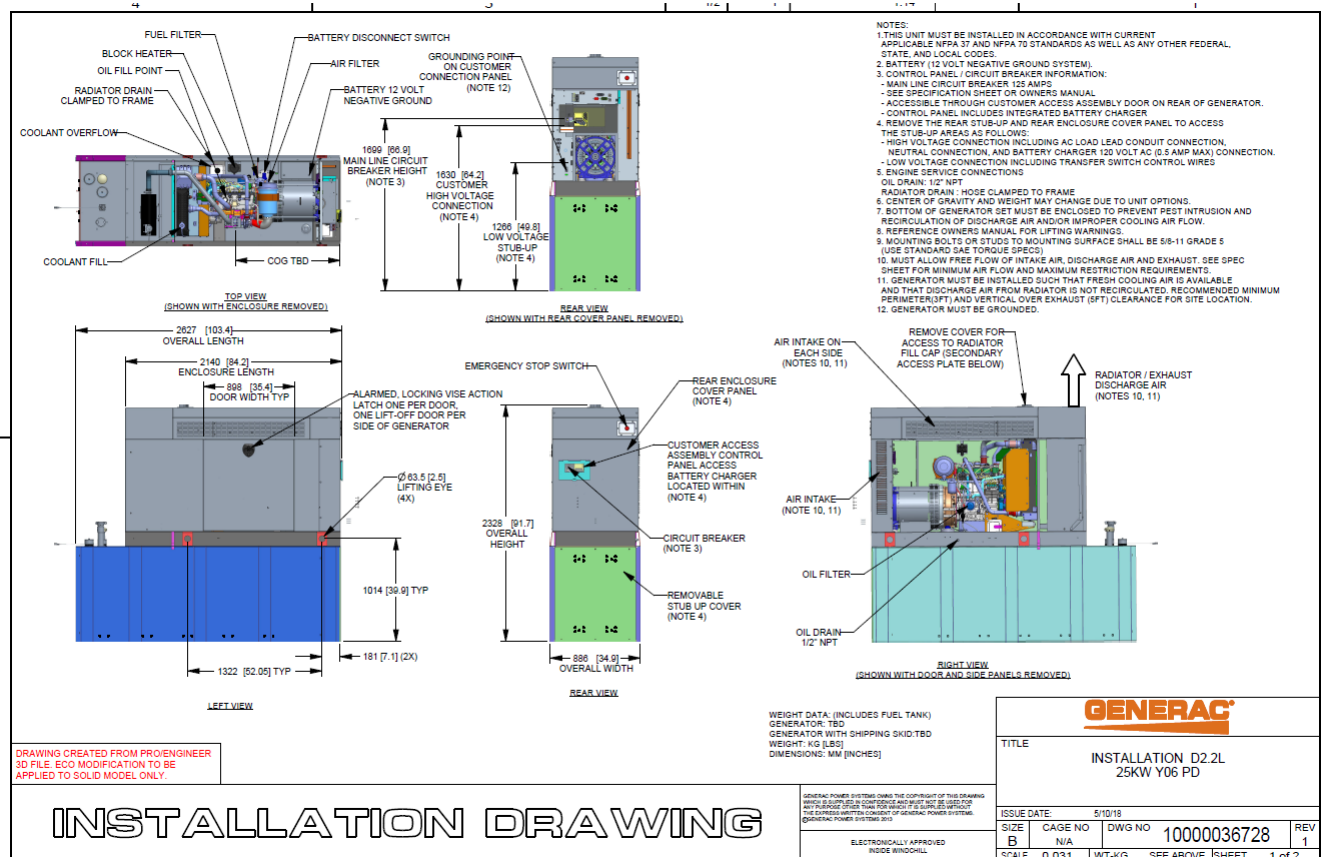
The RD025 has a 102.7" 240 Gallon Double-Wall UL142 Base tank to provide 98 hours of backup power at full load deployed on site. Below is the Install drawing for the 240-gallon tank for the RD025kW.



3 RXSC200A3 ATS/ Controller

3.1 Hardware

The RD025 will come with a RXSC200A3 and an Evolution controller. The sites considered for the RD025 should not have a DC power consumption above 20kW

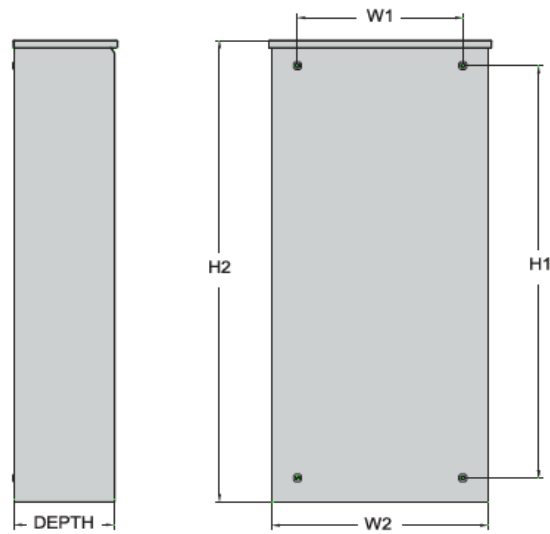
RXSC200A3 [Link](#)RXSC200A3 install drawing [Link](#)Evolution controller spec sheet [Link](#)RD025 installation drawings and supporting documentation [Link](#)

3.2 RXSC200A3 Automatic Transfer Switch

The RXSC200A3 (Automatic Transfer Switch) is equipped with the following functions. Utility voltage drop-out <65%. Timer to Generator start: 10 second factory set, adjustable between 2-1500 seconds. Engine Warm up delay: 5 seconds. Standby Voltage Sensor: 65% for 5 seconds. Utility Voltage Pickup >80%. Re-Transfer Time Delay: 15 seconds. Engine Cool-Down Timer: 60 seconds. Exerciser: 5 or 12 minute adjustable weekly/by-weekly/monthly. The transfer switch can also be operated manually without power applied

RXSC200A3 Dimensions

Model		RXSC200A3
Height (in./mm)	H1	17.24/437.9
	H2	20/508
Width (in./mm)	W1	12.5/317.5
	W2	14.6/370.8
Depth (in./mm)		7.09/180.1
Weight (lbs./kilos)		20/9.07



4 Architecture/Alarms

4.1 Interfaces and Alarming

The generator will be monitored by external alarms, conduit and cat five cables have to be installed from the Evolution Controllers Low Voltage Box located in the Generac generator to the appropriate cell site equipment. Nokia FSEB or FSEE and in Ericsson the SAU.

At a Nokia site, this connection is at the FSEB or an FSEE module. For the wiring diagram and instructions for the FSEB click the [Link](#) (The FSEE is the Nokia module that will be replacing the FSEB. For details on the FSEE contact: HQNokiaCellsiteDesigns@T-Mobile.com)

Ericsson sites will connect to the SAU module via OVP Expansion Kit for 8 External Alarms. Product number: UTOVP-ALM8EXP. For the wiring diagram and instructions for this click the [link](#)

The RXSC200A3 has auxiliary contacts that will facilitate the *ATS in Emergency position* alarm and will be a Normally Closed contact. Below is the wiring schematic for this contact and it can be found in the RXSC200A3 owners manual.

Auxiliary Contact

See [Figure 3-4](#). If desired, there is one normally-closed Auxiliary Contact (A) on the transfer switch to operate customer accessories, remote advisory lights, or remote annunciator devices. A suitable power source must be connected to the common terminal. If needed, an extra auxiliary contact can be added.

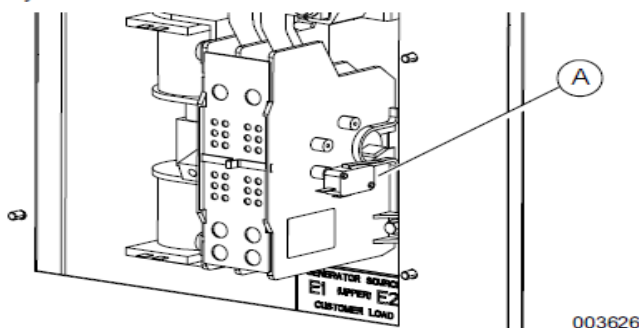


Figure 3-4. Auxiliary Contact

The auxiliary contact is normally closed when the transfer switch is in utility mode. The contacts will open when the transfer switch is in the standby power mode.

NOTE: Auxiliary Contact is rated 10 amps at 125 or 250 volts AC, and 0.6 amps at 125 volts DC.

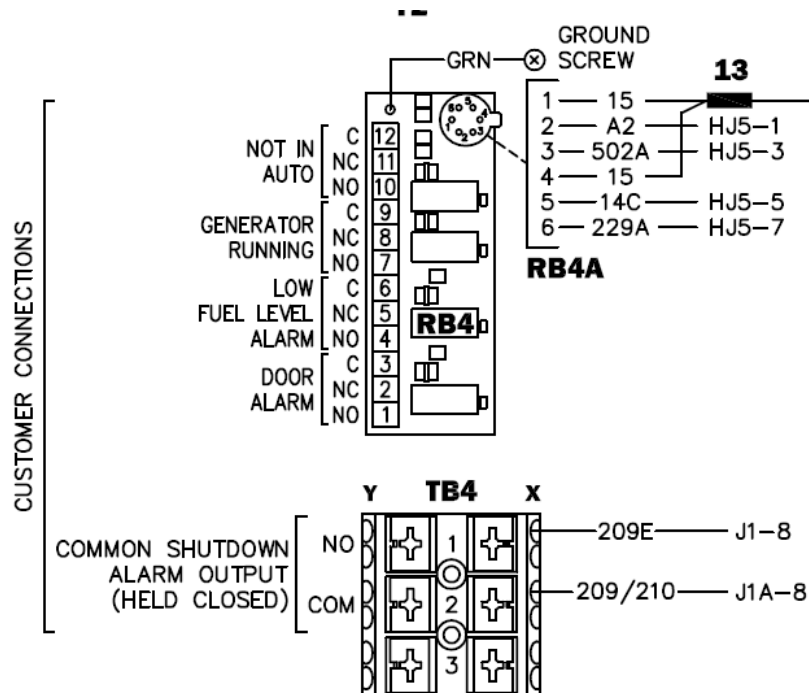
CAUTION

Equipment damage. Exceeding rated voltage and current will damage the auxiliary contacts. Verify that voltage and current are within specification before energizing this equipment.

(000134a)

T-Mobile has four relays available from the Generac controller that are user-defined. T-Mobile can have four-alarm categories and a limitless number of subcategories. T-Mobile will utilize Normally Closed (NC) dry contacts for alarms in Low Voltage Connection box in the spare outputs section. Ericsson cabinets need to be equipped with the alarm expansion kit (UTOVP-ALM8EXP) to handle external alarms.

Customer Connections Inside the RD025



Ericsson UTOVP- ALM8EXP



UTOVP-ALM8EXP

Product no

UTOVP-ALM8EXP

NFD30234/08

RPM777143/01200

OVP Expansion Kit for 8 External Alarms Qty

Denomination

OVP Expansion Kit for 8 External Alarms 1

OVERVOLTAGE ARRESTER/OVP-ALM 8 1

CABLE WITH CONNECTOR/SIGNAL CABLE 2

Evolution Controller Customer Connections	Nokia FSEB Alarm Connections 13-24	T-Mobile Standard Alarms
NC#8-Gen Running	NC 4110 grd 4111 pin 13	Generator Running
NC#11-Not In Auto	NC 4110 grd 4111 pin 14	Generator Alarm Critical
NC#2-Door Alarm	NC 4110 grd 4111 pin 15	Generator Alarm NSI
NC#5-Low Fuel	NC 4110 grd 4111 pin 16	Low Fuel
RXSC200A3-Auxiliary Contacts	NC 4110 grd 4111 pin 17	ATS in Emergency Position

Evolution Controller Customer Connections	Ericsson Alarm 8expConnections	T-Mobile Standard Alarms
NC#8- Gen. Running	NC - A5	Generator Running
NC#11-Not In Auto	NC - A6	Generator Alarm Critical
NC#2-Door Alarm	NC - A7	Generator Alarm NSI
NC#5-Low Fuel	NC - A8	Low Fuel
RXSC200A3-Auxiliary Contacts	NC - A9	ATS in Emergency Position

5 Regulatory Requirements

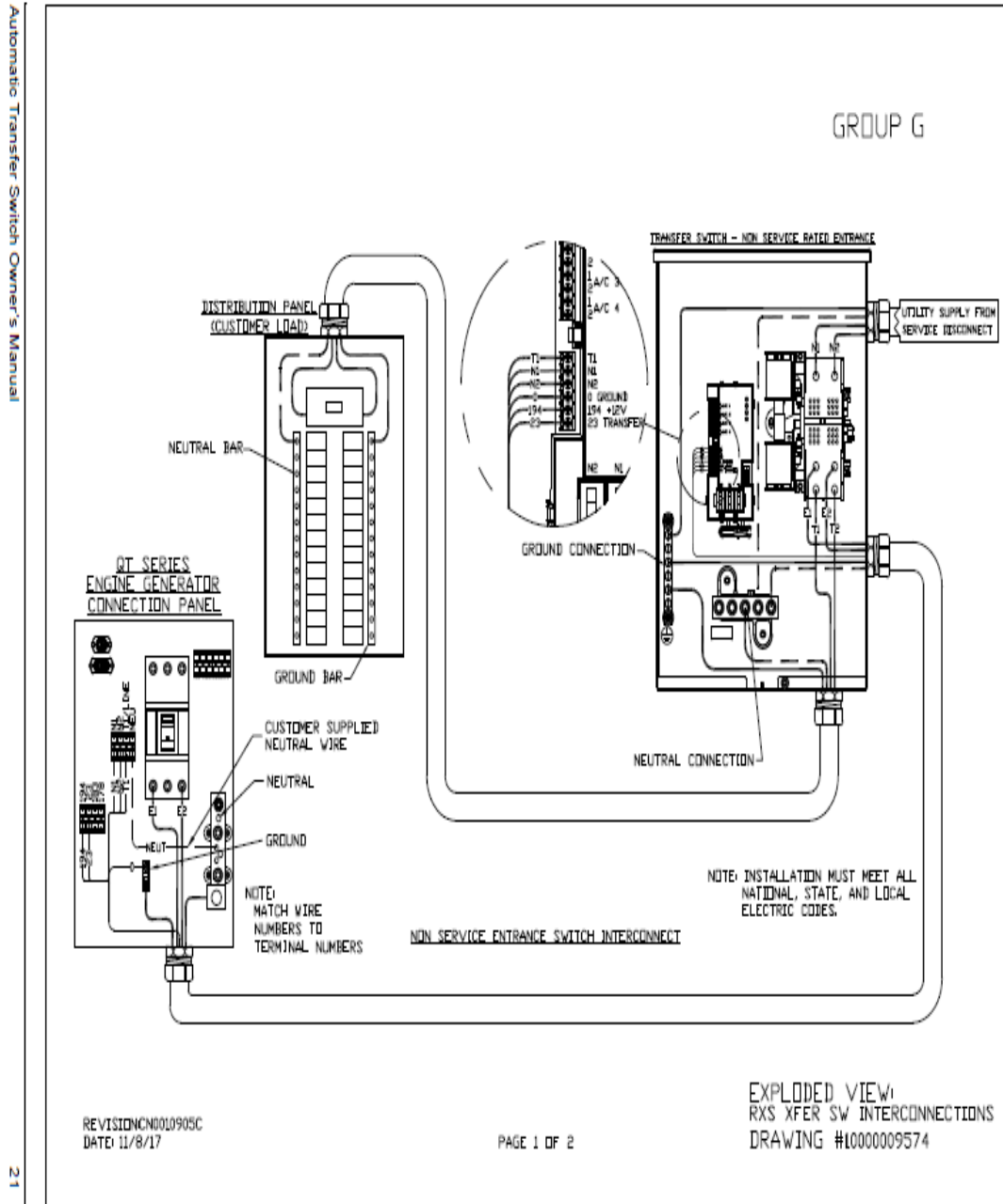
Level 2 Acoustic Enclosure provides a noise level of 67.5dBA. It is EPA certified and meets NFPA 99 and 110 requirements(NFPA National Fire Protection Association). The RD025 generator engines is a tier 4 engine and meets the EPA final standards.

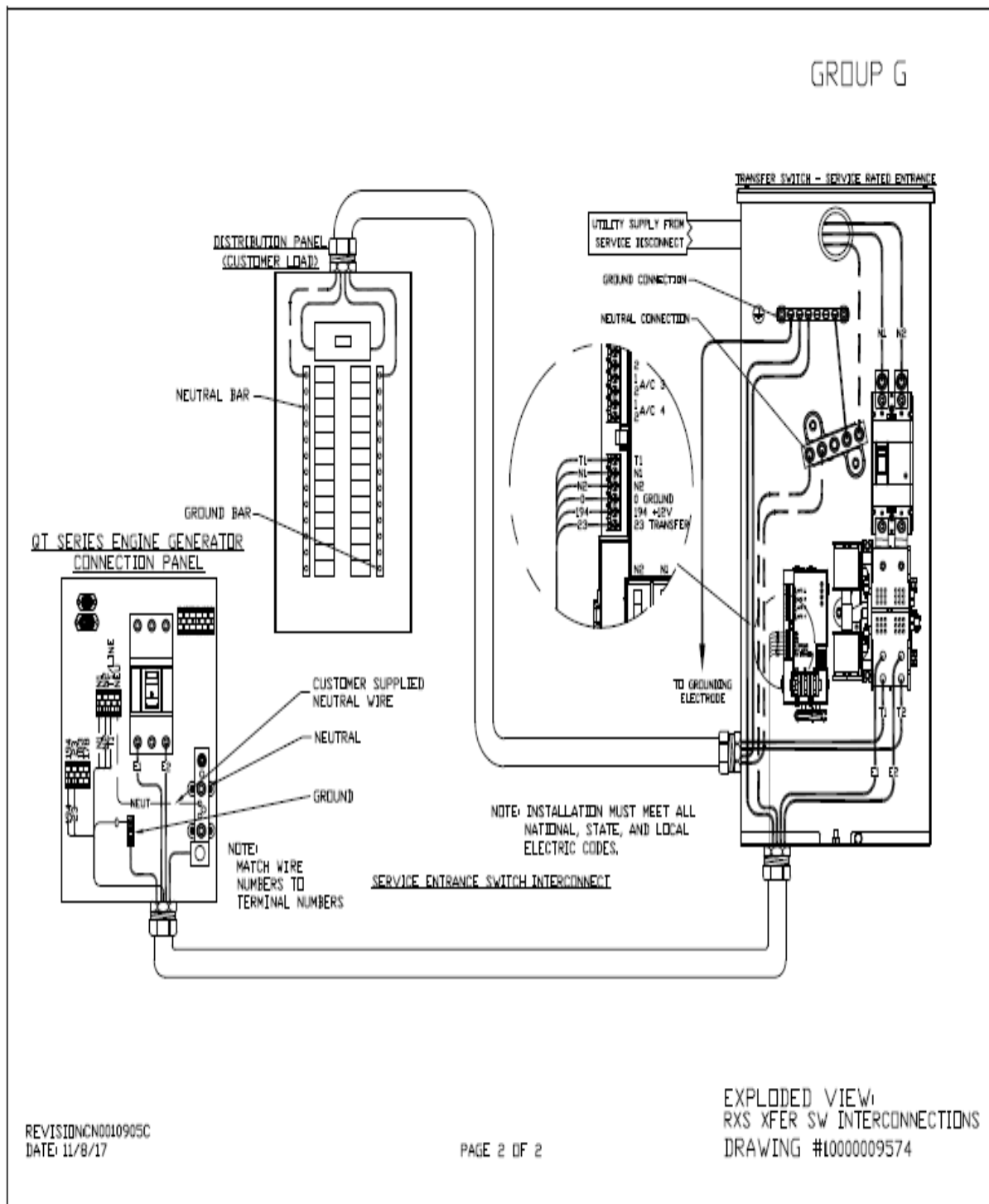
6 Configuration/Diagrams

The physical configuration of the Generator and the RXSC200A3 is, ATS before the PPC to ensure overcurrent protection when commercial power is restored. The RD025 and the RXSC200A3 has to be wired to Commercial AC power.

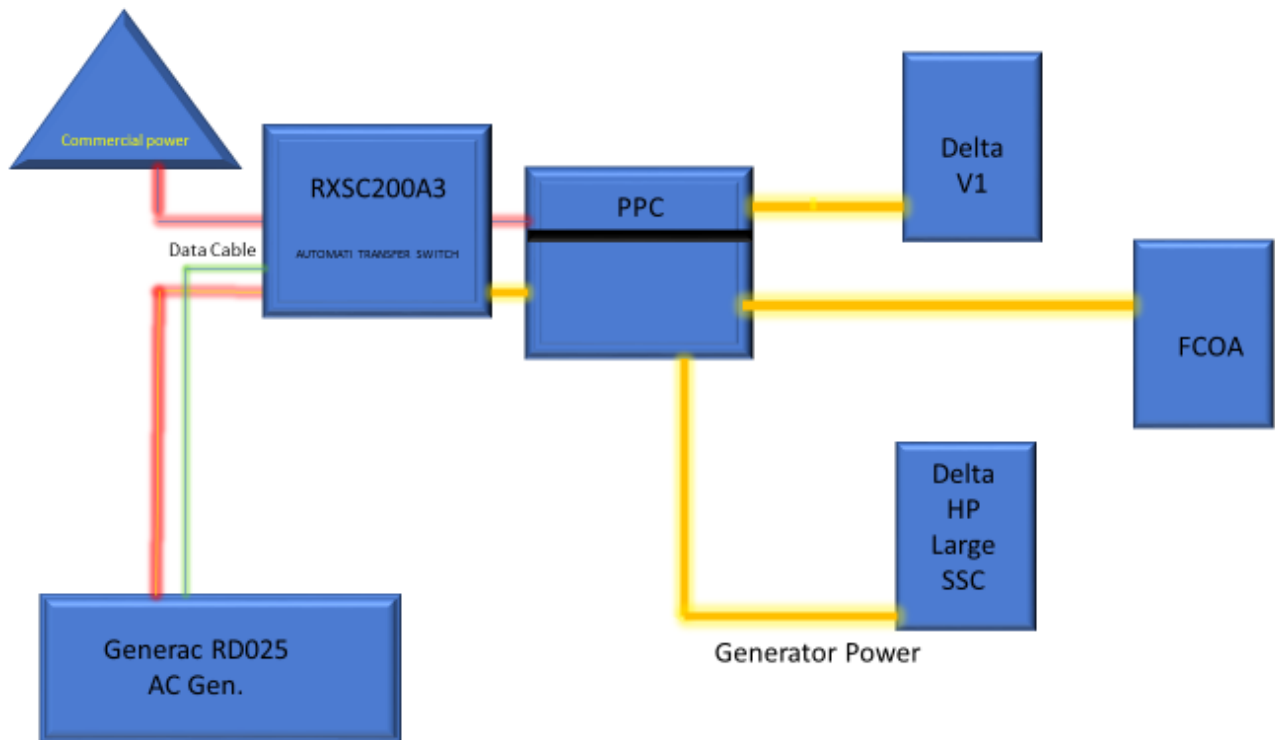
Commercial Power Connection Points On The RXSC200A3

Interconnection Drawings
No. 10000009574 (Part 1 of 2) — Liquid-Cooled Generator





Compound Diagram:



7 Maintenance

T-Mobile is recommending preventive maintenance to be performed every 250 hours of run-time or every 12 months, whichever comes first.

T-Mobile requires this minimum service checklist for the generator engine:

- Check engine mounts and support. Tighten fasteners.
- Check all the engine hoses and clamps for proper fit, and any signs of cracking and fatigue from wear.
- Inspect all belts for signs of cracking and fatigue from wear and adjust for proper tension.
- Inspect the exhaust system for leaks, burns and wet stacking. Drain exhaust line and tighten any clamps and flange bolts.
- Inspect silencer and plumbing for leaks, cracks or any other signs of wear.
- Inspect the system for fuel, oil and coolant leaks and signs of corrosion.
- Replace water separator.
- Replace water filter/ conditioner.
- Check Anti-Freeze (Spector-Analysis).
- Check coolant level and add, if needed.
- Inspect radiator mounting for signs or wear and cracking.
- Inspect/ clean air filter and change per manufacturer specifications.
- Inspect air intakes and outlets and tighten clamps and brackets, if applicable.
- Replace fuel filter.
- Inspect the carburetor fuel injection system, fuel injection pump and choke, if equipped. Adjust to manufacturers specifications.
- Change engine oil, oil filter and record the date on the filter casing.
- Check engine heater operation, if equipped.
- Check and adjust the battery charger operations, and charge rate within the manufacturer's recommended operating specifications.

- Inspect the battery housing, hardware connections, and cables for corrosion and wear.
- Check the battery electrolyte levels and specific gravity levels.
- Load test generator battery.
- Check, adjust and record generator output voltage, as necessary.
- Check and record the alternator charge rate.
- During inspection run the generator for 30 minutes under load. During this time, and after the engine is at full operational speed and has reached engine operating temperature; determine and record the condition of all inspection points: oil pressure, water/ coolant temperature, Fuel pressure, generator gauge, indicator operations, generator battery.
- Check the engine timing and adjust to manufacturers specifications, if necessary.
- Inspect, adjust and record governor and frequency, if necessary.
- Verify that the low fuel alarm is operational and configured correctly to trigger when the fuel tank reaches 50% of fuel tank capacity.

Check fuel level and refuel the generator during the preventive/ corrective maintenance visit.

DESIGN BASIS:

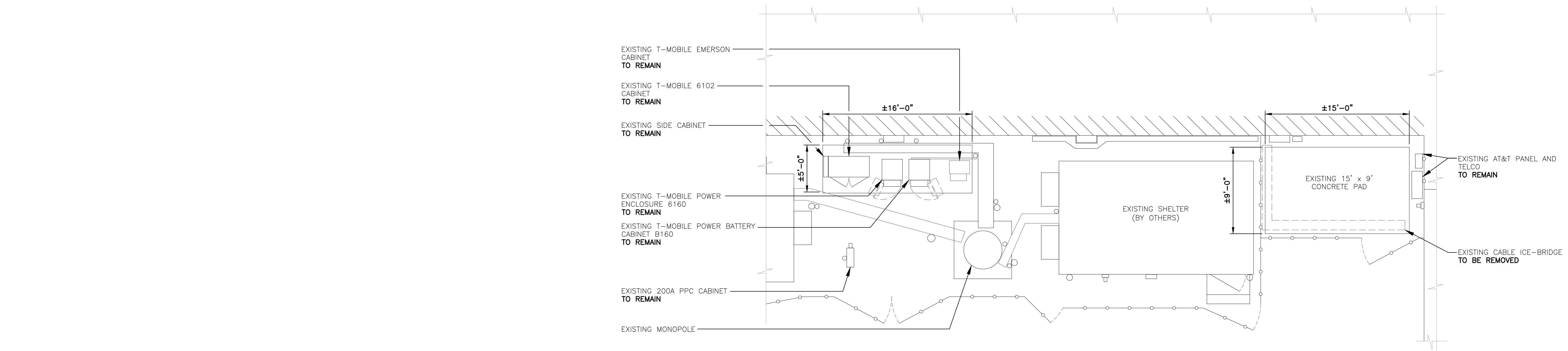
1. DESIGN CRITERIA:

- RISK CATEGORY II (BASED ON IBC TABLE 1604.5)
- NOMINAL DESIGN SPEED (OTHER STRUCTURE): 136 MPH (V_{asd})
(EXPOSURE B/ IMPORTANCE FACTOR 1.0 BASED ON ASCE 7-10).

1. THE CONTRACTOR SHALL CALL UTILITIES PRIOR TO THE START OF CONSTRUCTION.
2. ACTIVE EXISTING UTILITIES, WHERE ENCOUNTERED IN THE WORK, SHALL BE IDENTIFIED AND THE UTILITY ENGINEER SHALL BE NOTIFIED IMMEDIATELY. PRIOR TO PROCEEDING, SHOULD ANY UNCOVERED EXISTING UTILITY PRECLUDE COMPLETION OF THE WORK IN ACCORDANCE WITH THE CONTRACT DOCUMENTS.
3. THE AREAS OF THE COMPOUND DISTURBED BY THE WORK SHALL BE RETURNED TO THEIR ORIGINAL CONDITION.
4. CONTRACTOR SHALL MINIMIZE DISTURBANCE TO EXISTING SITE DURING CONSTRUCTION. EROSION CONTROL MEASURES, SHALL BE IN CONFORMANCE WITH THE LOCAL GUIDELINES FOR EROSION AND SEDIMENT CONTROL.
5. IF ANY FIELD CONDITIONS EXIST WHICH PRECLUDE COMPLIANCE WITH THE DRAWINGS, THE CONTRACTOR SHALL IMMEDIATELY NOTIFY THE ENGINEER AND SHALL PROCEED WITH AFFECTED WORK AFTER CONFLICT IS SATISFACTORILY RESOLVED.

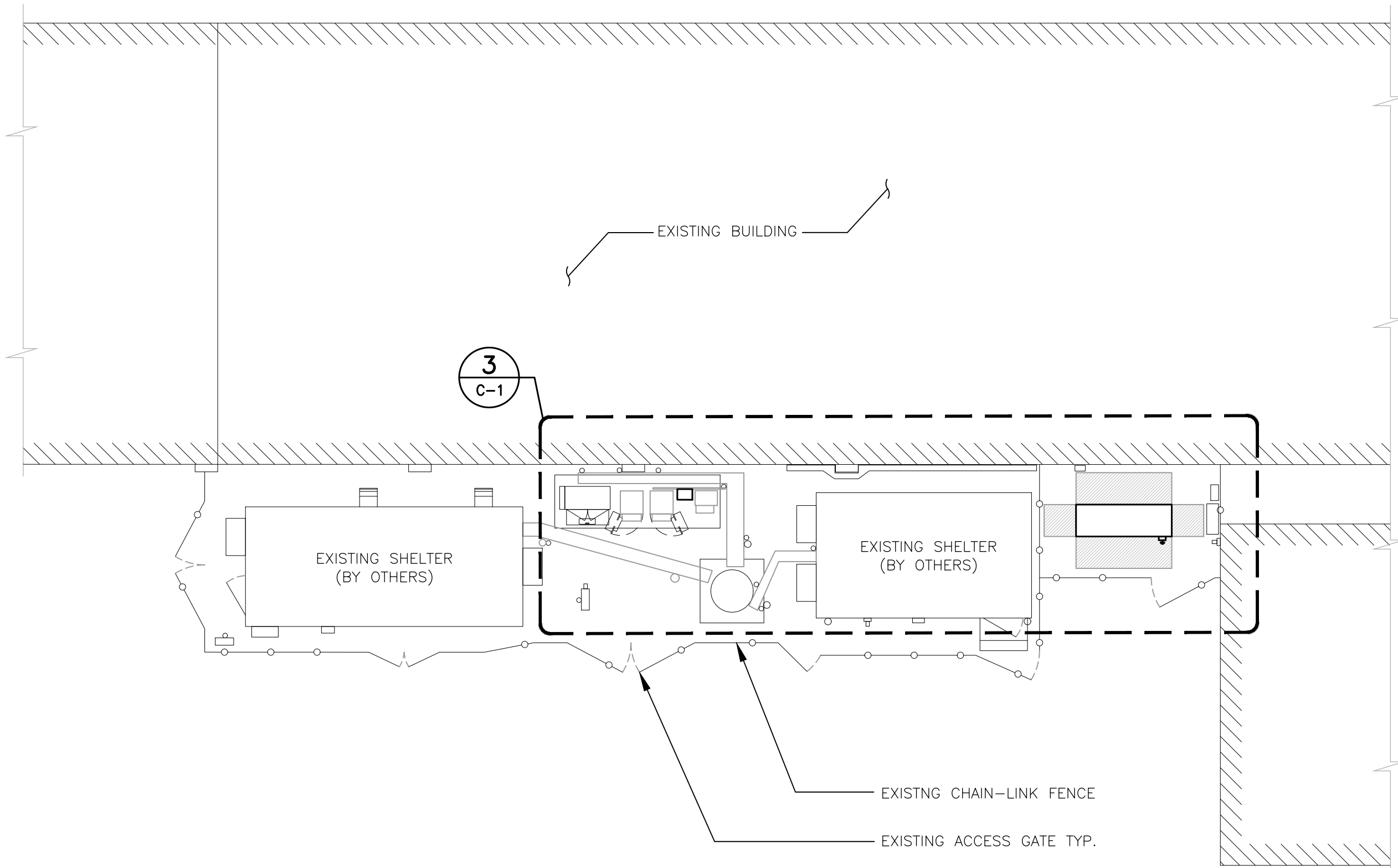
1. ALL WORK SHALL BE IN ACCORDANCE WITH THE 2015 INTERNATIONAL BUILDING CODE AS MODIFIED BY THE 2018 CONNECTICUT SUPPLEMENT, INCLUDING THE TIA/EIA-222 REVISION "G" "STRUCTURAL STANDARDS FOR STEEL ANTENNA TOWERS AND SUPPORTING STRUCTURES." 2017 CONNECTICUT FIRE SAFETY CODE, NATIONAL ELECTRICAL CODE AND LOCAL CODES.
2. CONTRACTOR SHALL REVIEW ALL DRAWINGS AND SPECIFICATIONS IN THE CONTRACT DOCUMENT SET. CONTRACTOR SHALL COORDINATE ALL WORK SHOWN IN THE SET OF DRAWINGS. THE CONTRACTOR SHALL PROVIDE A COMPLETE SET OF DRAWINGS TO ALL SUBCONTRACTORS AND ALL RELATED PARTIES. THE SUBCONTRACTORS SHALL EXAMINE ALL THE DRAWINGS AND SPECIFICATIONS FOR THE INFORMATION THAT AFFECTS THEIR WORK.
3. CONTRACTOR SHALL PROVIDE A COMPLETE BUILD-OUT WITH ALL FINISHES, STRUCTURAL, MECHANICAL, AND ELECTRICAL COMPONENTS AND PROVIDE ALL ITEMS AS SHOWN OR INDICATED ON THE DRAWINGS OR IN THE WRITTEN SPECIFICATIONS.
4. CONTRACTOR SHALL FURNISH ALL MATERIAL, LABOR AND EQUIPMENT TO COMPLETE THE WORK AND FURNISH A COMPLETED JOB ALL IN ACCORDANCE WITH LOCAL AND STATE GOVERNING AUTHORITIES AND OTHER AUTHORITIES HAVING LAWFUL JURISDICTION OVER THE WORK.
5. CONTRACTOR SHALL SECURE AND PAY FOR ALL PERMITS AND ALL INSPECTIONS REQUIRED AND SHALL ALSO PAY FEES REQUIRED FOR THE GENERAL CONSTRUCTION, PLUMBING, ELECTRICAL AND HVAC. PERMITS SHALL BE PAID FOR BY THE RESPECTIVE SUBCONTRACTORS.
6. CONTRACTOR SHALL MAINTAIN A CURRENT SET OF DRAWINGS AND SPECIFICATIONS ON SITE AT ALL TIMES AND INSURE DISTRIBUTION OF NEW DRAWINGS TO SUBCONTRACTORS AND OTHER RELEVANT PARTIES AS SOON AS THEY ARE MADE AVAILABLE. ALL OLD DRAWINGS SHALL BE MARKED VOID AND REMOVED FROM THE CONTRACT AREA. THE CONTRACTOR SHALL FURNISH AN "AS-BUILT" SET OF DRAWINGS TO OWNER UPON COMPLETION OF PROJECT.
7. LOCATION OF EQUIPMENT AND WORK SUPPLIED BY OTHERS THAT IS DIAGRAMMATICALLY INDICATED ON THE DRAWINGS, SHALL BE DETERMINED BY THE CONTRACTOR. THE CONTRACTOR SHALL DETERMINE LOCATIONS AND DIMENSIONS SUBJECT TO STRUCTURAL CONDITIONS AND WORK OF THE SUBCONTRACTORS.
8. THE CONTRACTOR IS SOLELY RESPONSIBLE TO DETERMINE CONSTRUCTION PROCEDURE AND SEQUENCE, AND TO ENSURE THE SAFETY OF THE EXISTING STRUCTURES AND IT'S COMPONENT PARTS DURING CONSTRUCTION. THIS INCLUDES THE ADDITION OF WHATEVER SHORING, BRACING, UNDERPINNING, ETC. THAT MAY BE NECESSARY.
9. DRAWINGS INDICATE THE MINIMUM STANDARDS, BUT IF ANY WORK SHOULD BE INDICATED TO BE SUBSTANDARD TO ANY ORDINANCES, LAWS, CODES, RULES, OR REGULATIONS BEARING ON THE WORK, THE CONTRACTOR SHALL INCLUDE IN HIS WORK AND SHALL EXECUTE THE WORK CORRECTLY IN ACCORDANCE WITH SUCH ORDINANCES, LAWS, CODES, RULES OR REGULATIONS WITH NO INCREASE IN COSTS.
10. ALL UTILITY WORK SHALL BE IN ACCORDANCE WITH LOCAL UTILITY COMPANY REQUIREMENTS AND SPECIFICATIONS.
11. ALL EQUIPMENT AND PRODUCTS PURCHASED ARE TO BE REVIEWED BY CONTRACTOR AND ALL APPLICABLE SUBCONTRACTORS FOR ANY CONDITION PER MFR.'S RECOMMENDATIONS. CONTRACTOR TO SUPPLY THESE ITEMS AT NO COST TO OWNER OR CONSTRUCTION MANAGER.
12. ANY AND ALL ERRORS, DISCREPANCIES, AND "MISSED" ITEMS, ARE TO BE BROUGHT TO THE ATTENTION OF THE SITE OWNER'S CONSTRUCTION MANAGER DURING THE BIDDING PROCESS BY THE CONTRACTOR. ALL THESE ITEMS ARE TO BE INCLUDED IN THE BID. NO "EXTRA" WILL BE ALLOWED FOR MISSED ITEMS.
13. CONTRACTOR SHALL BE RESPONSIBLE FOR ALL ON-SITE SAFETY FROM THE TIME THE JOB IS AWARDED UNTIL ALL WORK IS COMPLETE AND ACCEPTED BY THE OWNER.
14. CONTRACTOR TO REVIEW ALL SHOP DRAWINGS AND SUBMIT COPY TO ENGINEER FOR APPROVAL. DRAWINGS MUST BEAR THE CHECKER'S INITIALS BEFORE SUBMITTING TO THE CONSTRUCTION MANAGER FOR REVIEW.
15. THE CONTRACTOR SHALL FIELD VERIFY ALL DIMENSIONS, ELEVATIONS, ANGLES, AND EXISTING CONDITIONS AT THE SITE, PRIOR TO FABRICATION AND/OR INSTALLATION OF ANY WORK IN THE CONTRACT AREA.
16. COORDINATION, LAYOUT, FURNISHING AND INSTALLATION OF CONDUIT AND ALL APPURTENANCES REQUIRED FOR PROPER INSTALLATION OF ELECTRICAL AND TELECOMMUNICATION SERVICE SHALL BE THE SOLE RESPONSIBILITY OF THE CONTRACTOR.
17. ALL DAMAGE CAUSED TO ANY EXISTING STRUCTURE SHALL BE THE SOLE RESPONSIBILITY OF THE CONTRACTOR. THE CONTRACTOR WILL BE HELD LIABLE FOR ALL REPAIRS REQUIRED FOR EXISTING STRUCTURES IF DAMAGED DURING CONSTRUCTION ACTIVITIES.
18. THE CONTRACTOR SHALL CONTACT "DIG SAFE" (DIAL 811) AT LEAST 48 HOURS PRIOR TO ANY EXCAVATIONS. ALL UTILITIES SHALL BE IDENTIFIED AND CLEARLY MARKED. CONTRACTOR SHALL MAINTAIN AND PROTECT MARKED UTILITIES THROUGHOUT PROJECT COMPLETION.
19. CONTRACTOR SHALL COMPLY WITH OWNER'S ENVIRONMENTAL ENGINEER ON ALL METHODS AND PROVISIONS FOR ALL EXCAVATION ACTIVITIES INCLUDING SOIL DISPOSAL. ALL BACKFILL MATERIALS TO BE PROVIDED BY THE CONTRACTOR.
20. THE COUNTY/CITY/TOWN WILL MAKE PERIODIC FIELD OBSERVATION AND INSPECTIONS TO MONITOR THE INSTALLATION, MATERIALS, WORKMANSHIP AND EQUIPMENT INCORPORATED INTO THE PROJECT TO ENSURE COMPLIANCE WITH THE DESIGN PLANS, SPECIFICATIONS, CONTRACT DOCUMENTS AND APPROVED SHOP DRAWINGS.
21. THE COUNTY/CITY/TOWN MUST BE NOTIFIED (2) WORKING DAYS PRIOR TO CONCEALMENT/BURIAL OF ANY SYSTEM OR MATERIAL THAT WILL PREVENT THE DIRECT INSPECTION OF MATERIALS, METHODS OR WORKMANSHIP. EXAMPLES OF THESE PROCESSES ARE BACKFILLING A CIRCLE RING OR TOWER FOUNDATION, POURING TOWER FOUNDATIONS, BURYING GROUND RODS, PLATES OR GRIDS, ETC. THE CONTRACTOR MAY PROCEED WITH THE SCHEDULED PROCESS (2) WORKING DAYS AFTER PROVIDING NOTICE UNLESS NOTIFIED OTHERWISE BY THE COUNTY/CITY/TOWN.

T-MOBILE NORTHEAST LLC					
NH039/LAYDON CONSTRUC SITE ID: CTNH039A 69 WHEELER ST NEW HAVEN, CT 06512					
DATE:		03/19/21			
SCALE:		AS NOTED			
JOB NO.		21003.10			
GENERAL NOTES AND SPECIFICATIONS					
N-1					
Sheet No. <u>2</u> of <u>4</u>					



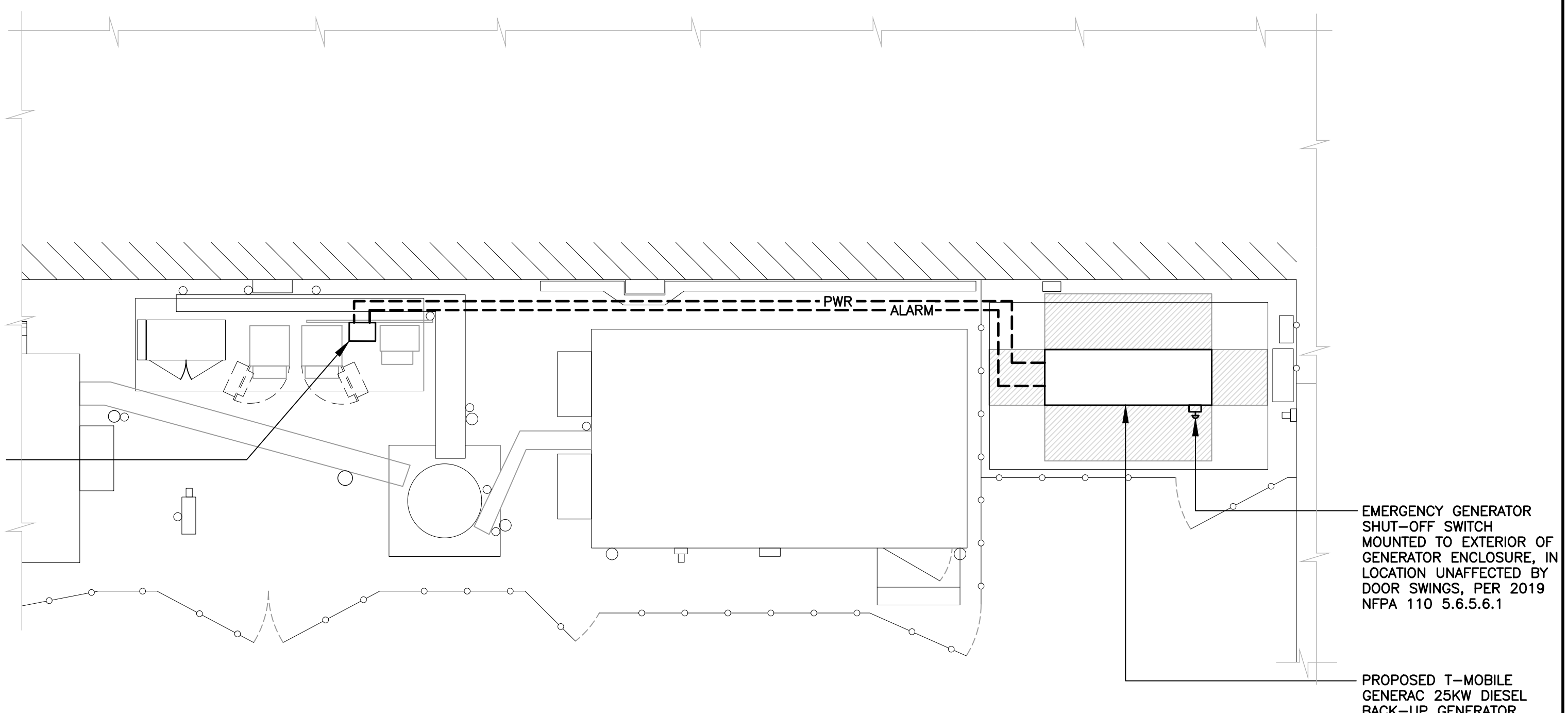
2
C-1 **EQUIPMENT PLAN - EXISTING**
SCALE: 3/16" = 1'

TRUE NORTH



1
C-1 **COMPOUND PLAN - PROPOSED**
SCALE: 1" = 5'

TRUE NORTH



3
C-1 **EQUIPMENT PLAN - PROPOSED**
SCALE: 3/16" = 1'

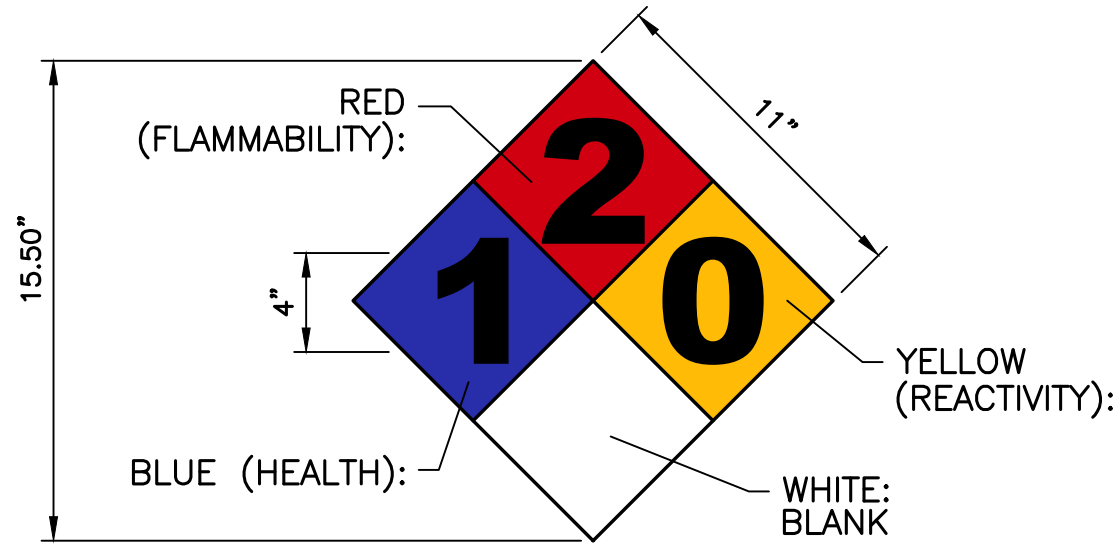
TRUE NORTH

T-MOBILE NORTHEAST LLC		NH039/LAYDON CONSTRUC		SITE ID: CTNH039A		69 WHEELER ST NEW HAVEN, CT 06512	
DATE:		03/19/21		SCALE:		AS NOTED	
JOB NO.		21003.10		COMPOUND AND EQUIPMENT PLAN		C-1	
Sheet No. 3		of 4		CENTEK engineering Centered on Solutions™ (203) 488-0580 (203) 488-8587 Fax 65-2 North Branford Road Branford, CT 06405 www.CentekEng.com		T-Mobile TrueSpeed Wireless	
PROFESSIONAL ENGINEER SEAL		[Seal]		REV.		06/15/21	
		RJS		TJR		CONSTRUCTION DRAWINGS - ISSUED FOR CONSTRUCTION	
		DATE		DRAWN BY		CHK'D BY	
		0					



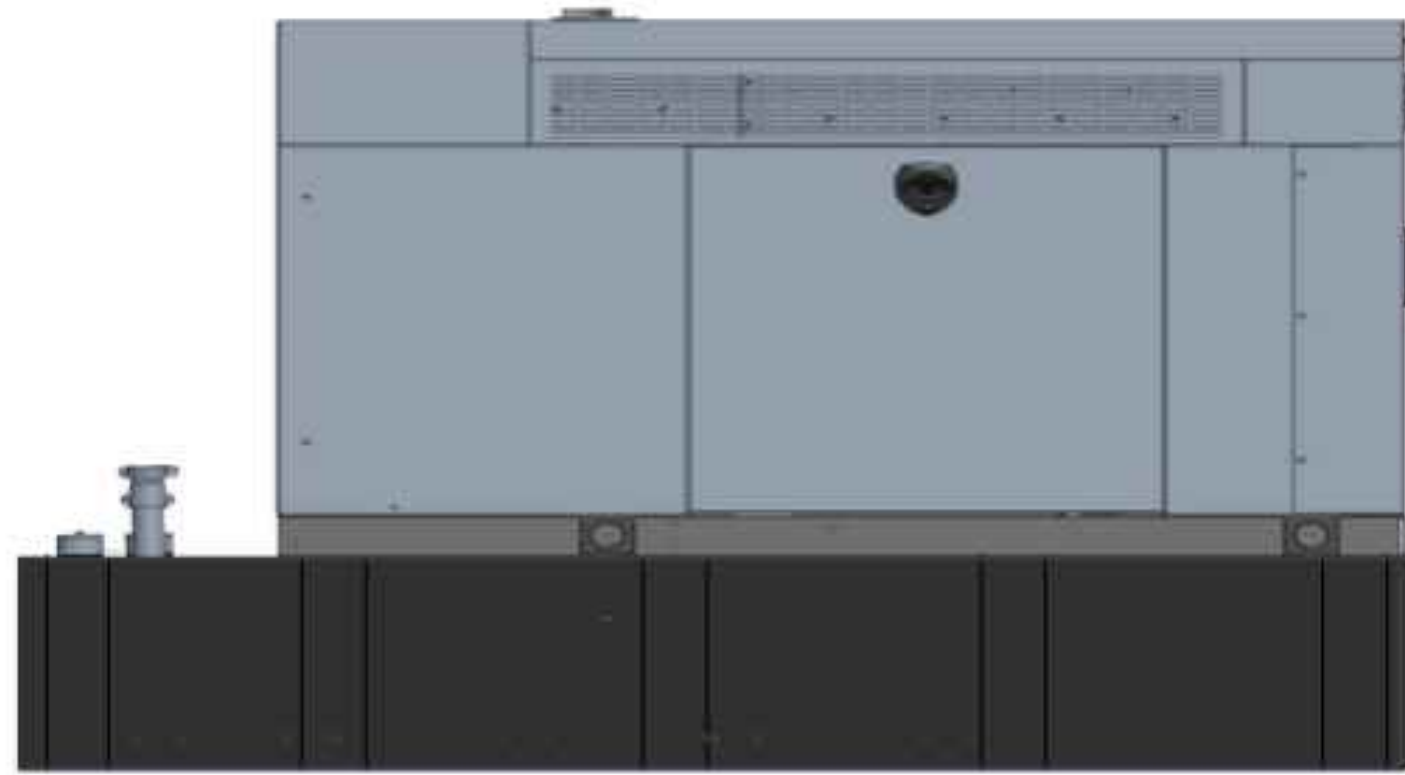
AUTOMATIC TRANSFER SWITCH					
EQUIPMENT	PHASE	VOLTAGE	ENCLOSURE	AMP	DIMENSIONS
MAKE: GENERAC MODEL: RXSC200A3	1-PHASE	120/240	NEMA-3R	200	17.3"L x 12.5"W

1 AUTOMATIC TRANSFER SWITCH DETAIL
E-1 SCALE: NOT TO SCALE



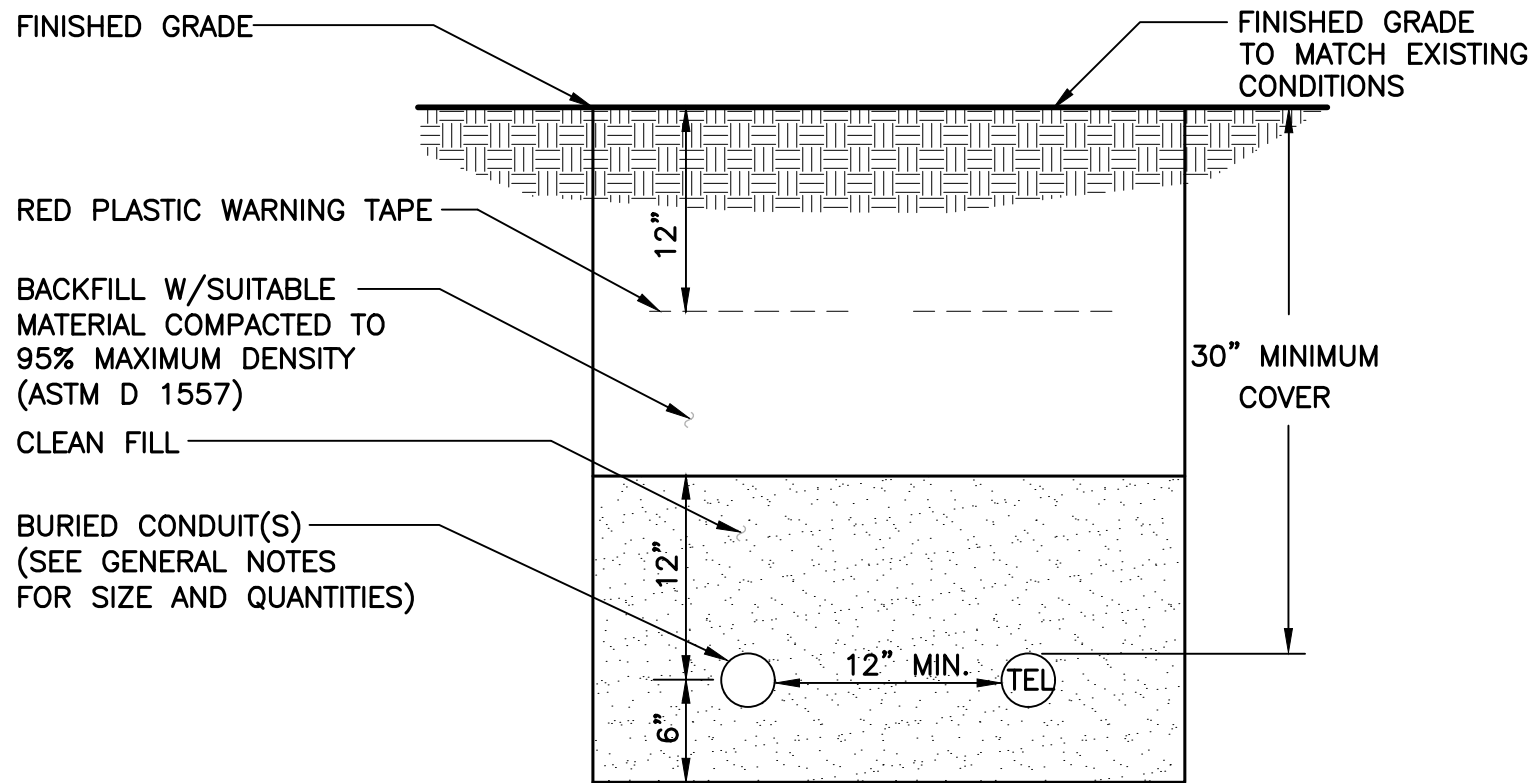
SIGN NAME: REGULATORY, NFPA 704 HAZARD ID
DESCRIPTION: MOUNT ON GENERATOR ACCESS DOOR.
CONSULT WITH GENERATOR MANUFACTURER MSDS SHEET FOR BLUE AND RES POSITIONS
NOTES:
1) SIGNS EXPOSED TO WEATHER SHOULD BE CHECKED ANNUALLY FOR READABILITY.
2) SIGNS MUST BE UPDATED IF CHEMICAL STORAGE OR HAZARD INFORMATION FOR THE LOCATION CHANGES.
3) THE GC MUST REVIEW WITH LOCAL JURISDICTION WHEN FILLING FOR PERMITS, AS EACH JURISDICTION MAY HAVE DIFFERENT REQUIREMENTS AND COMPLY WITH POSTING REQUIREMENTS OR DIRECTIVES FROM THE LOCAL JURISDICTION.

2 NFPA 704 DIAMOND SIGNAGE DETAIL
E-1 SCALE: NOT TO SCALE



BACKUP POWER GENERATOR						
EQUIPMENT	POWER GENERATED	FUEL	MODEL NUMBER	FUEL TANK SIZE (GAL)	DIMENSIONS	WEIGHT
MAKE: GENERAC MODEL: RD025	25 KW, AC	DIESEL	7192-0	229	103.4"L x 35.0"W x 91.7"H	2123 LBS.
NOTES: 1. FUEL LEVEL/SECONDARY CONTAINMENT SHALL BE ALARMED AND IN COMMUNICATION WITH T-MOBILE'S NOC. 2. CONTRACTOR TO COORDINATE FINAL EQUIPMENT MODEL SELECTION AND ALL OPTIONAL FEATURES WITH T-MOBILE'S CONSTRUCTION MANAGER PRIOR TO ORDERING.						

3 PROPOSED GENERATOR DETAIL
E-1 SCALE: NOT TO SCALE



- NOTES:
- THE CLEAN FILL SHALL PASS THROUGH A 3/8" MESH SCREEN AND SHALL NOT CONTAIN SHARP STONES. OTHER BACKFILL SHALL NOT CONTAIN ASHES, CINDERS, SHELLS, FROZEN MATERIAL, LOOSE DEBRIS OR STONES LARGER THAN 2" IN MAXIMUM DIMENSION.
 - WHERE EXISTING UTILITIES ARE LIKELY TO BE ENCOUNTERED, CONTRACTOR SHALL HAND DIG AND PROTECT EXISTING UTILITIES.

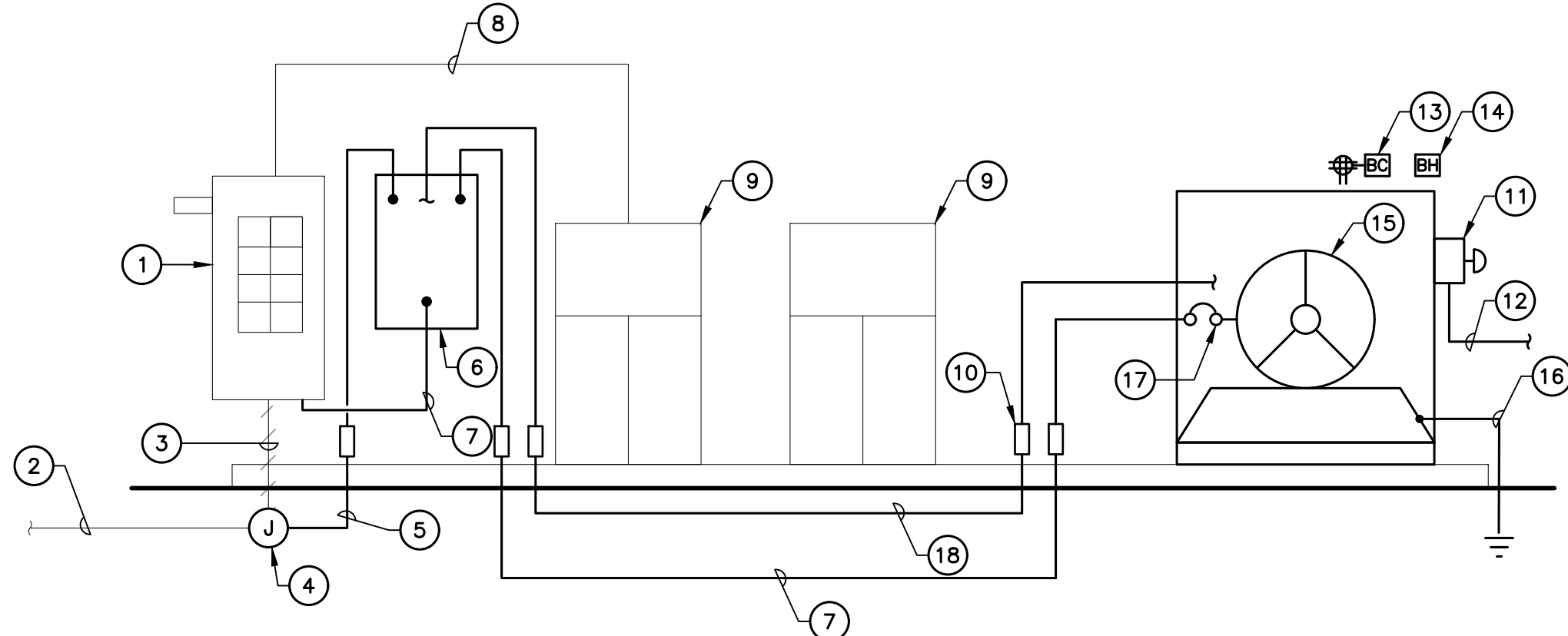
4 TYPICAL ELECTRICAL/TEL TRENCH DETAIL
E-1 SCALE: NOT TO SCALE

RISER DIAGRAM NOTES

- EXISTING PPC CABINET TO REMAIN.
- EXISTING POWER CONDUIT AND CONDUCTORS PREVIOUSLY SERVING EXISTING PANEL.
- SECTION OF CONDUIT AND CONDUCTORS TO BE REMOVED.
- JUNCTION BOX SIZED PER NEC.
- EXTEND EXISTING CONDUITS AND CONDUCTORS TO NEW ATS.
- NEW 200A, 2 SOURCE AUTOMATIC TRANSFER SWITCH.
- (3) #3/0 AWG, (1) #6 AWG GROUND, 2-1/2" CONDUIT.
- EXISTING CONDUITS AND CONDUCTORS TO REMAIN
- EXISTING EQUIPMENT CABINETS TO REMAIN.
- EXPANSION COUPLING TYPICAL.

RISER DIAGRAM NOTES

- REMOTE GENERATOR SHUT OFF SWITCH IN BREAK GLASS ENCLOSURE MOUNTED TO EXTERIOR OF GENERATOR ENCLOSURE PER 2019 NFPA 110 5.6.5.6.1.
- 3/4" CONDUIT AND CONDUCTORS REQUIRED FOR PROPER OPERATION OF EMERGENCY GENERATOR SHUT OFF SWITCH.
- GENERATOR BATTERY CHARGER AND CONVENIENCE GFCI OUTLET WIRED TO EXISTING PANEL. OUTLET TO BE MOUNTED IN WEATHERPROOF ENCLOSURE.
- GENERATOR BLOCK HEATER WIRED TO EXISTING PANEL SERVING T-MOBILE EQUIPMENT.
- EMERGENCY BACK UP GENERATOR.
- GENERATOR GROUNDING PER NEC AND MANUFACTURER'S REQUIREMENTS. BOND TO EXISTING GROUNDING SYSTEM. (MINIMUM OF (1) #2 AWG GROUND)
- GENERATOR OUTPUT CIRCUIT BREAKER.
- 1" CONDUIT FOR GENERATOR CONTROL AND SIGNAL WIRING.



5 ELECTRICAL RISER DIAGRAM
E-1 SCALE: NOT TO SCALE

PROFESSIONAL ENGINEER SEAL

CENTEX engineering
Centered on Solutions™

(203) 489-0580
(203) 489-8587 Fax
65-2 North Branford Road
Branford, CT 06405
www.CentexEng.com

T-MOBILE NORTHEAST LLC

NH039/LAYDON CONSTRUC

SITE ID: CTNH039A

69 WHEELER ST
NEW HAVEN, CT 06512

DATE: 03/19/21

SCALE: AS NOTED

JOB NO. 21003.10

TYPICAL EQUIPMENT DETAILS AND RISER DIAGRAM

E-1

Sheet No. 4 of 4

CONSTRUCTION DRAWINGS - ISSUED FOR CONSTRUCTION

REV. 0 06/15/21 DATE

TJR RTS DRAWN BY CHK'D BY DESCRIPTION