

Ronald C. Clark  
Manager Real Estate Operations

Nextel Communications  
100 Corporate Place, Rocky Hill, CT 06067  
860 883-2112 FAX 860 513-5444

**NEXTEL®**

February 13, 2002

Mr. Mortimer A. Gelston, Chairman  
Connecticut Siting Council  
10 Franklin Square  
New Britain, Connecticut 06051



Dear Chairman Gelston:

Please find enclosed and respectfully submitted, a request from Nextel Communications Inc. ("Nextel") to Modify an Exempt Tower and Associated Equipment at an existing telecommunications facility located on 69 Wheeler Street, New Haven, Connecticut. This facility is located on property owned by Elmer F. Laydon Construction and is currently used by Cingular Wireless to provide wireless coverage.

Nextel wishes to share use of this facility in order to improve/expand wireless its system coverage and to avoid the possibility of constructing another telecommunications tower in the general area.

The attached information details how the addition of the proposed antennas and associated equipment at the tower site meet the criteria set forth in Section 16-50j-72(b)(2) of the Regulations of Connecticut State Agencies and therefore is an Exempt Modification pursuant to Section 16-50j-73 of the Regulation.

Thank you for your consideration in this matter.

Respectfully,

Ronald C. Clark  
Manager Real Estate Operations

Enclosure

Cc: Honorable John DeStefano, Mayor  
City of New Haven

**EXEMPT MODIFICATION  
69 WHEELER STREET  
NEW HAVEN, CONNECTICUT 06512**

Pursuant to Section 16-50i(a)(5) of the Connecticut General Statutes and Section 16-50j-72(b)(2), as amended, of the Regulations of Connecticut State Agencies, Nextel Communications Inc., ("Nextel") hereby notifies the Connecticut Siting Council of its intent to modify an existing telecommunications facility located at 69 Wheeler Street in New Haven, Connecticut.

**BACKGROUND**

This existing facility, located at 69 Wheeler Street in New Haven, Connecticut consists of a 100-foot tall monopole that is owned by Elmer F. Laydon Construction. The tower is currently used by Cingular Wireless to provide cellular service coverage to this section of New Haven and along Route I-95 in the vicinity of the Pearl Harbor Memorial Bridge.

Nextel desires to share use of this facility and thus avoid the potential need to construct an additional tower in the general area.

**DISCUSSION**

Nextel plans to install twelve (12) panel antennas center-lined at the 90-foot level of the tower (see Attachment A) and place a 12-foot by 20-foot equipment shelter inside the southeastern corner of the existing fenced compound (see Attachment B). The tower has been structurally analyzed and found to be fully capable of supporting Nextel's antennas and its tower mounted hardware (Attachment C).

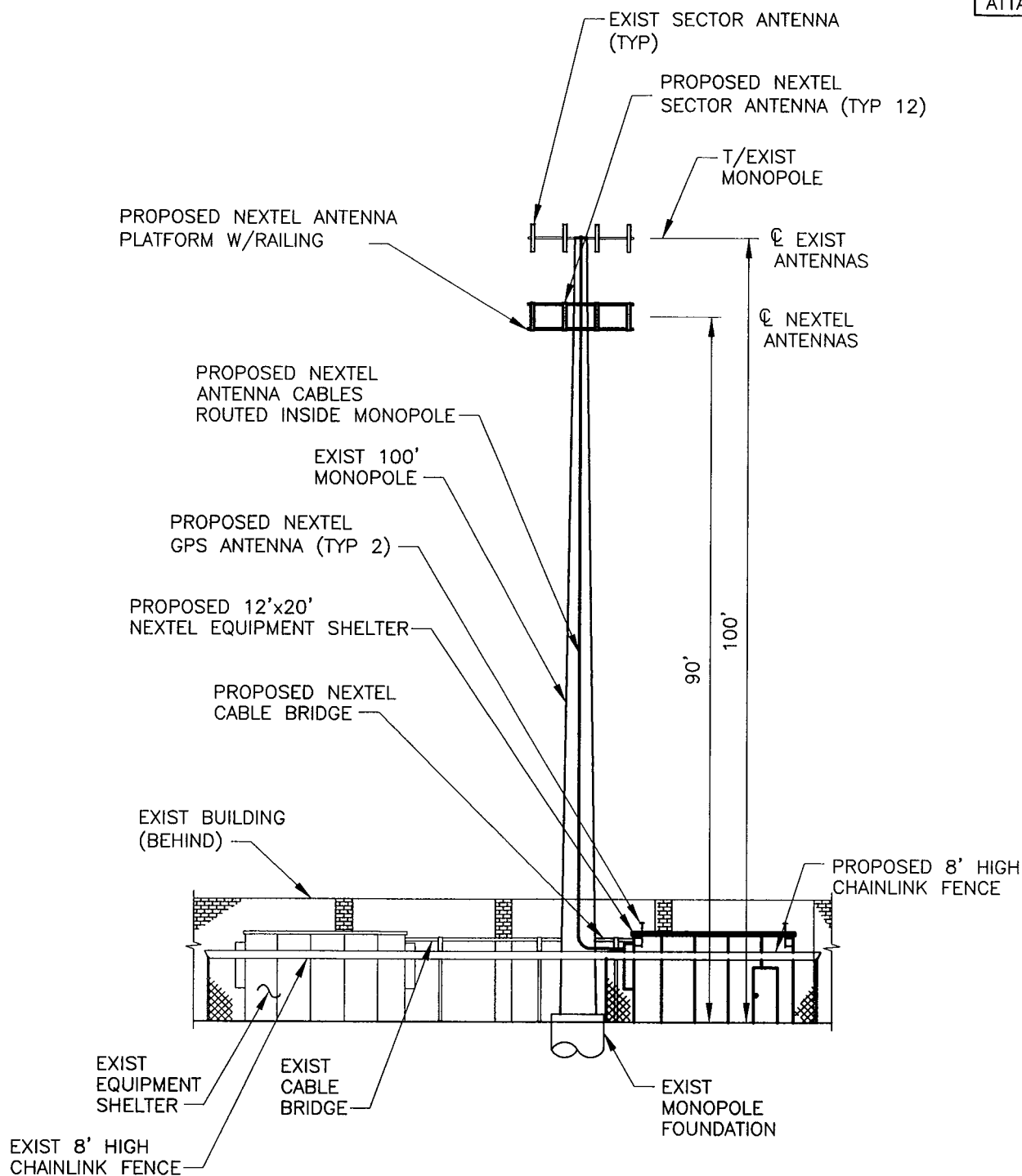
**POWER DENSITY INFORMATION**

The operation of Nextel's antennas will not increase the total radio frequency electromagnetic power density level to a level at (or even near) existing State and Federal Standards. "Worst case" calculations, measured to a point at the base of the tower, show the combined power levels for the existing Cingular and proposed Nextel antennas reach just 30.4097 % of the State/Federal standard in an uncontrolled access environment. (See Attachment D).

## **CONCLUSION**

The proposed additions do not constitute a “modification” of an existing facility as defined in Connecticut General Statutes Section 16-50i(d) and are consistent with the exception criteria found in Section 16-50j-72(b)(2) of the Regulations of Connecticut State Agencies in that the addition of Nextel’s antennas and equipment will not increase the existing tower height or extend the boundaries of the site; will not increase noise levels by six (6) decibels or more at the site’s boundaries; and will not increase the total radio frequency electromagnetic radiation above the Standard set forth in Section 22(a)–162 of the Connecticut General Statutes. In summary, this proposed addition would not have a substantial adverse environmental effect.

For the reasons discussed above, Nextel respectfully requests that the Council acknowledge that this Notice of Modification meets the Council’s exemption criteria, and permit Nextel to share use of this facility.



1  
SC-1

# ELEVATION

SCALE: 1" = 20'

SHEET 1 OF 2

**TECTONIC /KEYES ASSOCIATES**

1344 SILAS DEANE HIGHWAY, SUITE 500  
ROCKY HILL, CT 06067  
(860) 563-2341

FAX(860) 257-4882

***NEXTEL***

EAST HAVEN-WEST(CT-2507)  
WHEELER STREET  
NEW HAVEN, CT 06512

1/3/02

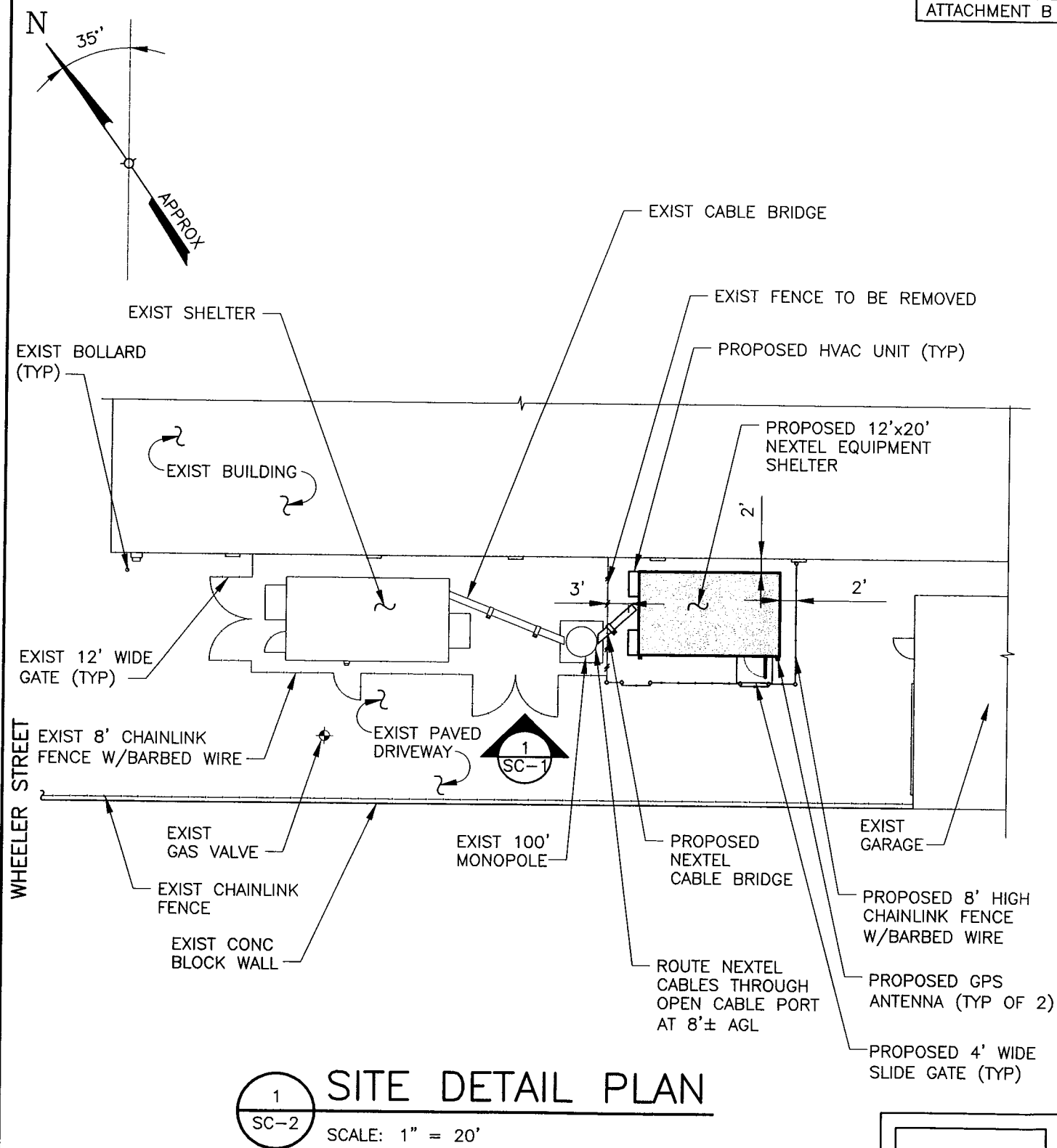
ISSUED BY: *MJ*

W.O. 2993.2507

12/10/01

SITING COUNCIL

SC-1



SHEET 2 OF 2

**TECTONIC / KEYES ASSOCIATES**

1344 SILAS DEANE HIGHWAY, SUITE 500  
 ROCKY HILL, CT 06067  
 (860) 563-2341

FAX(860) 257-4882

1/3/02

**NEXTEL**

EAST HAVEN-WEST(CT-2507)  
 WHEELER STREET  
 NEW HAVEN, CT 06512

ISSUED BY: MJ

W.O. 2993.2507

12/10/01

SITING COUNCIL

SC-2

# TECTONIC / KEYES ASSOCIATES

Division of TECTONIC Engineering Consultants P.C.

1344 Silas Deane Highway, Suite 500  
Rocky Hill, Connecticut 06067

CORPORATE OFFICE  
Mountainville, NY

(800) 629-6531

(860) 563-2311

Fax (800) 257-4882  
www.tectonicengineering.com

Mr. Rick Neller, Construction Manager  
Nextel Communications  
100 Corporate Place  
Rocky Hill, CT 06067

January 24, 2002

RE: W.O. 2993.2507  
EAST HAVEN WEST (CT-2507)  
69 WHEELER STREET  
NEW HAVEN, CT  
SUMMARY OF STRUCTURAL REVIEW

Dear Mr. Neller:

It is our understanding that Nextel Communications is proposing to install antennas on the existing 90' monopole at the above referenced site. Tectonic/Keyes Associates has performed a limited inspection of the structure and a review of its design for its suitability to support the proposed antennas based on the following information:

- Structure Design Calculations for a 90' monopole, prepared by Engineered Endeavors Incorporated (EEI Job # 5052), dated 5/25/99.
- Construction Drawings for Springwich Cellular Limited Partnership, Wireless Communication Facility at Laydon Construction, prepared by Maguire Group, Inc., not dated.

The original design was based on ANSI/EIA-222-F using a basic wind speed of 85 mph with ½" of ice. The structure was designed to support the following items:

12 ALP11011 directional antennas & Platform at the 90' level  
1 – 15' Omni whip antenna at the 90' level  
12 ALP11011 directional antennas & Platform at the 80' level

The existing antenna inventory was taken from the above referenced drawings and verified by field inspection.

We understand that Nextel is proposing to install a total of 12 DB844H90(E)-XY antennas at the 80' level. Additionally, we understand that the Nextel antennas will be mounted on a platform similar to the existing frames on the tower.

ENGINEERS • SURVEYORS • CONSTRUCTION MANAGERS

An Equal Opportunity Employer

TECTONIC / KEYES ASSOCIATES  
Division of TECTONIC Engineering Consultants P.C.

January 24, 2002

2993.2507

2

In accordance with the provisions of ANSI/TIA/EIA-222-F-1996, "Structural Standards for Steel Antenna Towers and Antenna Supporting Structures" and the 1999 Connecticut Supplement to the BOCA National Building Code/1996, a basic wind speed of 85 mph applies to New Haven County, CT, where the tower is located. We note that the wind speed used in the original design is consistent with this requirement.

We have not inspected the structure in detail, and therefore assume that the tower and its foundation were built in accordance with the manufacturer's drawings and specifications, and that the structure is in the "like-new" condition.

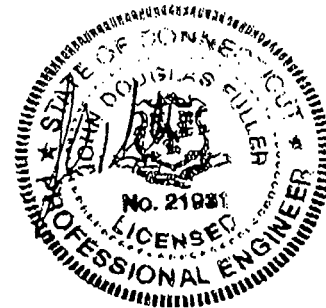
We have not performed a detailed structural analysis of the tower, but have compared forces generated from the antennas and mounts of the original design to those generated by the proposed condition. Based on our extensive experience with similar structures and a comparison with the original tower design, it is clear that the tower and its foundation have adequate capacity to support this installation in accordance with current applicable codes.

Please contact this office if you require any further information.

Sincerely,  
TECTONIC ENGINEERING CONSULTANTS, P.C.

  
John D. Fuller, P.E.  
Telecommunications Manager

Cc: File  
Ron Clark, Nextel Communications



## ATTACHMENT D

[illegible]