



STATE OF CONNECTICUT
CONNECTICUT SITING COUNCIL

Ten Franklin Square
New Britain, Connecticut 06051
Phone: (860) 827-2935
Fax: (860) 827-2950

September 15, 1998

Peter J. Tyrrell
Senior Counsel
Springwich Cellular Limited Partnership
500 Enterprise Drive
Rocky Hill, CT 06067-3900

Re: DOCKET NO. 114 - Southern New England Telephone Certificate of Environmental Compatibility and Public Need for a telecommunications tower and associated equipment in the Town of Monroe, Connecticut. Notice of Intent to Modify Facility. (EM-SCLP-085-980901).

Dear Attorney Tyrrell:

At a public meeting held on September 10, 1998, the Connecticut Siting Council (Council) acknowledged your notice to modify this existing telecommunications facility in Monroe, Connecticut, pursuant to Section 16-50j-73 of the Regulations of Connecticut State Agencies. However, the Council did not address any contractual claims between Springwich Cellular Limited Partnership and the Town which may be proper and enforceable.

The proposed modifications are to be implemented as specified here and in your notice dated September 1, 1998. The modifications are in compliance with the exception criteria in Section 16-50j-72 (b) of the Regulations of Connecticut State Agencies as changes to an existing facility site that would not increase tower height, extend the boundaries of the tower site, increase noise levels at the tower site boundary by six decibels, and increase the total radio frequency electromagnetic radiation power density measured at the tower site boundary to or above the standard adopted by the State Department of Environmental Protection pursuant to General Statutes § 22a-162. This facility has been carefully modeled to ensure that radio frequency emissions are conservatively below State and federal standards applicable to the frequency now used on this tower. Any additional change to this facility will require explicit notice to this agency pursuant to Regulations of Connecticut State Agencies Section 16-50j-73. Such notice shall include all relevant information regarding the proposed change with cumulative worst-case modeling of radio frequency exposure at the closest point of uncontrolled access to the tower base, consistent with Federal Communications Commission, Office of Engineering and Technology, Bulletin 65. Any deviation from this format may result in the Council implementing enforcement proceedings pursuant to General Statutes § 16-50u including, without limitation, imposition of expenses resulting from such failure and of civil penalties in an amount not less than one thousand dollars per day for each day of construction or operation in material violation.

Thank you for your attention and cooperation.

Very truly yours,

Mortimer A. Gelston
Chairman

MAG/RKE/jlh

c: Honorable Karen L. Burnaska, First Selectman, Town of Monroe



STATE OF CONNECTICUT
CONNECTICUT SITING COUNCIL

Ten Franklin Square
New Britain, Connecticut 06051
Phone: (860) 827-2935
Fax: (860) 827-2950

September 4, 1998

Honorable Karen L. Burnaska
First Selectman
Town of Monroe
Town Hall
7 Fan Hill Road
Monroe, CT 06468

RE: DOCKET NO. 114 - Southern New England Telephone Certificate of Environmental Compatibility and Public Need for a telecommunications tower and associated equipment in the Town of Monroe, Connecticut. Notice of Intent to Modify Facility. (EM-SCLP-085-980901).

Dear Ms. Burnaska:

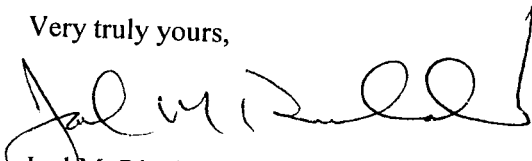
On September 1, 1998, the Connecticut Siting Council (Council) received a request from Springwiche Cellular Limited Partnership to modify an existing telecommunications facility located at 230 Guinea Road in Monroe, Connecticut, pursuant to Regulations of Connecticut State Agencies Section 16-50j-72.

The Council will consider this item at the next meeting scheduled for Tuesday, September 10, 1998, at 1:30 p.m. in Hearing Room Two, Ten Franklin Square, New Britain, Connecticut.

Please call me or inform the Council if you have any questions or comments regarding this modification of an existing facility.

Thank you for your cooperation and consideration.

Very truly yours,



Joel M. Rinebold
Executive Director

JMR/jlh

Enclosure: Notice of Intent



EM-SCLP-085-980901
(Docket No. 114)

500 Enterprise Drive
Rocky Hill, Connecticut 06067-3900
Phone: (860) 513-7755
Fax: (860) 513-7614

Springwich Cellular Limited Partnership

Peter J. Tyrrell
General Counsel

September 1, 1998

RECEIVED

SEP 01 1998

CONNECTICUT
SITING COUNCIL

Mr. Mortimer A. Gelston, Chairman
Connecticut Siting Council
Ten Franklin Square
New Britain, Connecticut 06051

Re: Springwich Cellular Limited Partnership - Monroe Cell Site (Docket No. 114)

Dear Mr. Gelston:

The Springwich Cellular Limited Partnership ("SCLP") plans to allow Nextel Communications of the Mid-Atlantic, Inc., d/b/a Nextel Communications ("Nextel") and PageNet Paging ("PageNet") to install antennas and related equipment at the existing SCLP facility in Monroe, Connecticut. Please accept this letter as notification, pursuant to R.C.S.A. §16-50j-73, of construction which constitutes an exempt modification pursuant to R.C.S.A. §16-50j-72(b). In compliance with R.C.S.A. §16-50j-73, a copy of this letter is being sent to the Selectwoman of Monroe.

The existing facility consists of property located at 230 Guinea Road in Monroe leased by SCLP from the Town of Monroe. On the property is a 240' self-supporting lattice tower and a two room single story equipment building approximately 30' x 30' in size, constructed with the approval of the Council and the Town so as to accommodate future users of the tower. This facility was approved by the Connecticut Siting Council in its January 16, 1990 Decision and Order in Docket No. 114. Presently on the tower are existing SCLP antennas at the 240' level, existing PageNet antennas just above the 240' level, and existing RAM Mobile Data antennas at the 200' level. The SCLP and PageNet antennas were approved in Docket 114, while the addition of the RAM antennas was approved in December, 1993.

Nextel plans to mount up to twelve directional panel antennas, Swedcom Model ALP-9212, approximately 52" in height, and two receive-only GPS antennas at the 220' level of the tower. Nextel will subdivide one of the original two equipment rooms into a larger and a smaller room, and install its equipment within the larger of the two within the existing equipment building. PageNet plans to mount three additional omnidirectional whip antennas, Andrew Model PG1D0F, approximately 96" in height, and one receive-only GPS antenna at the 180' level of the tower. PageNet will install its equipment within the smaller of the two new rooms within the existing equipment building.

The addition of Nextel's and PageNet's antennas and equipment to the tower site does not constitute a modification as defined in C.G.S. §16-50i(d) because the general physical characteristics of the facility will not be significantly changed or altered. Rather, the planned changes to the facility fall squarely within those activities explicitly provided in R.C.S.A. §16-50j-72(b).

First, the height of the tower will be unaffected. Nextel's antennas will be installed with the center of radiation at approximately the 220' level of the tower. PageNet's antennas will be installed with the center of radiation at approximately the 184' level of the tower. As shown on the enclosed tower drawing, the planned changes will not increase the overall height of the tower.

Second, the proposed additions will not extend the site boundaries. Nextel's and PageNet's equipment will be located the existing building. The fenced area around the tower and building will not be changed. The proposed changes are shown on the attached site plan.

Third, the proposed addition will not increase the noise levels at the existing facility by six decibels or more. The only additional noise will be from heating, ventilation and cooling mechanisms for Nextel's and PageNet's equipment.

Fourth, operation of the additional antennas will not increase the total radio frequency electromagnetic radiation power density, measured at the tower base, to a level at or above the applicable ANSI/NCRP standards. A "worst-case" calculation for a point at the base of the tower is shown below. These calculations were done using the methods set forth in the August 1997 FCC OET Bulletin No. 65.

Carrier	Power Density (mW/cm ²)	ANSI Standard (mW/cm ²)	% of Standard
SCLP (Existing)	0.0125	0.587	2.14 %
PageNet (Existing)	0.0127	0.621	2.04 %
Ram Mobile Data (Existing)	0.0008	0.624	0.13 %
Nextel (New)	0.0142	0.572	2.51 %
PageNet (New)	0.0228	0.621	3.68 %
		Total	10.5 %

As the table demonstrates, the “worst-case” power density for the combined operations at this site is 10.5 % of the applicable standard as calculated for a mixed frequency site.

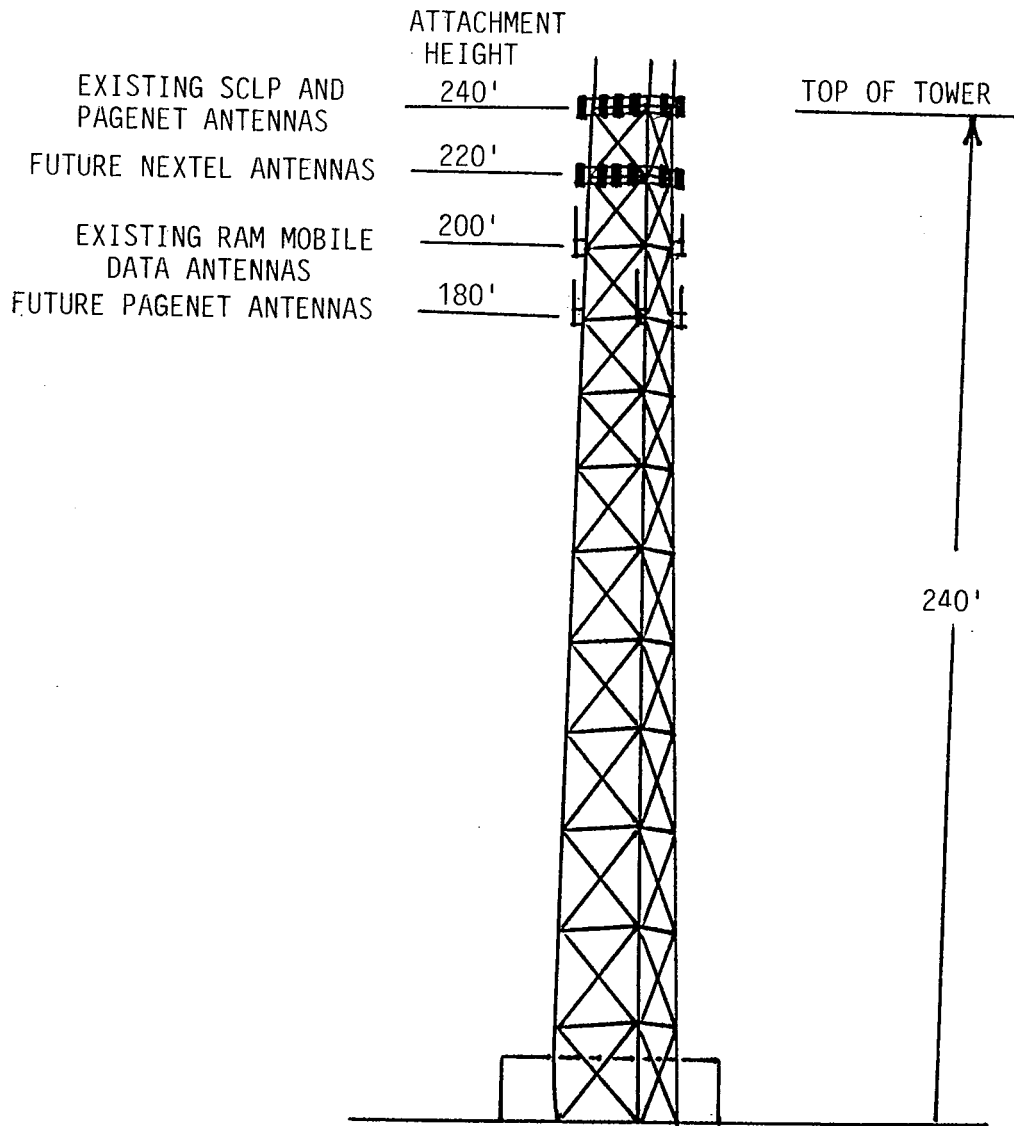
For the foregoing reasons, SCLP respectfully submits that the proposed addition of antennas and equipment at the Monroe facility constitutes an exempt modification under R.C.S.A. §16-50J-72(b).

Respectfully yours,

A handwritten signature in blue ink that reads "Peter J. Tynell". The signature is written in a cursive style with a large initial "P" and a long, sweeping underline.

Attachments

cc: Honorable Karen Burnaska, Selectwoman, Town of Monroe



SPRINGWICH CELLULAR LIMITED PARTNERSHIP
CELL SITE

230 GUINEA ROAD, MONROE, CT



500 Enterprise Drive
Rocky Hill, Connecticut 06067-3900
Phone: (860) 513-7755
Fax: (860) 513-7614

Springwich Cellular Limited Partnership

Peter J. Tyrrell
General Counsel

September 1, 1998

Honorable Karen Burnaska, Selectwoman
Town of Monroe
Town Hall
7 Fan Hill Road
Monroe, Connecticut 06468

Dear Selectwoman Burnaska:

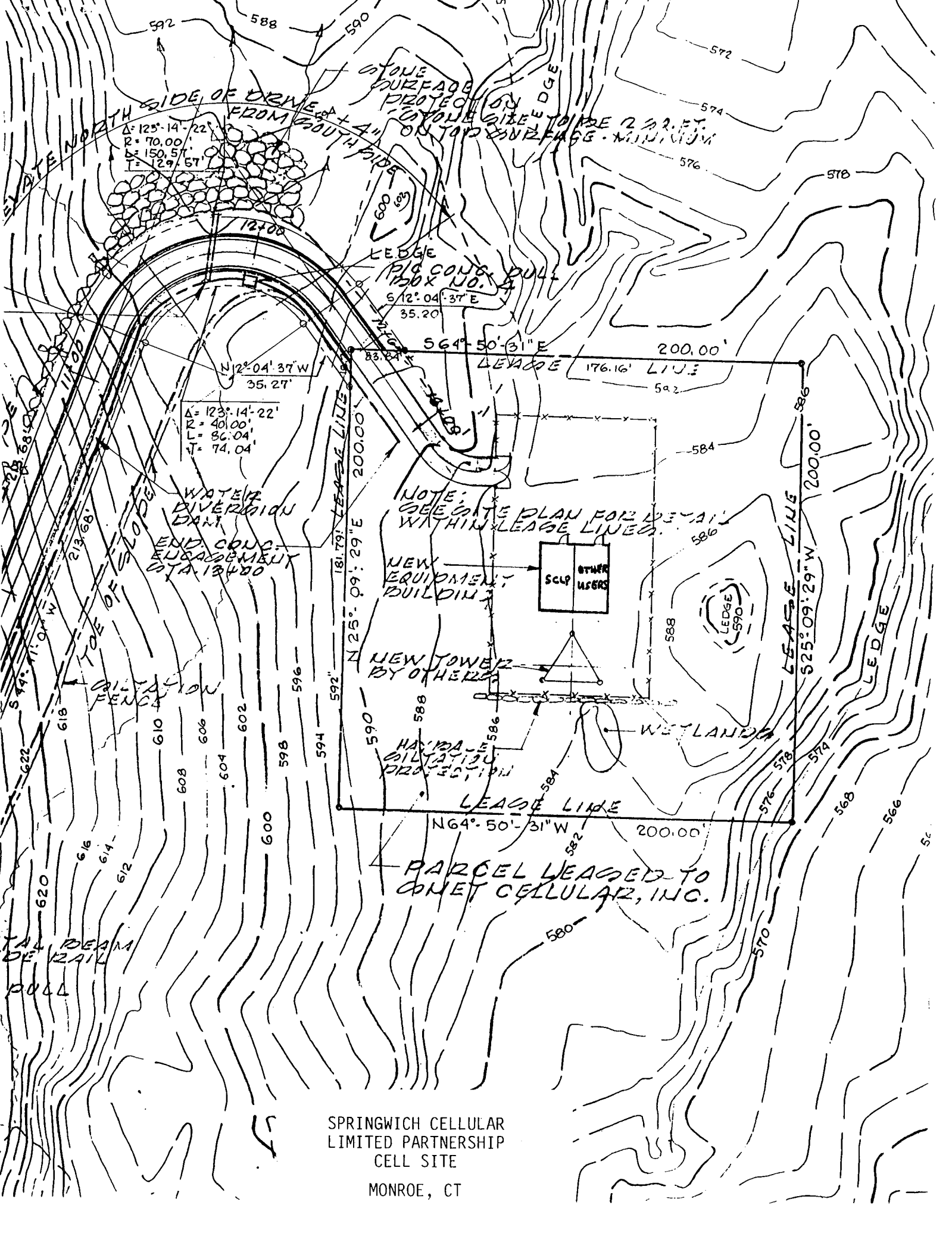
Consistent with the State policy of encouraging tower sharing, the Springwich Cellular Limited Partnership ("SCLP") plans to allow Nextel Communications, Inc. and PageNet Paging to share its telecommunications site located at 230 Guinea Road in Monroe. As required by Section 16-50j-73 of the Regulations of Connecticut State Agencies ("R.C.S.A."), please accept this letter and the attached letter to the Connecticut Siting Council as notice of intent to construct an "exempt modification" pursuant to R.C.S.A. Section 16-50j-72(b).

The attached letter fully sets forth the SCLP proposal. However, if you have any questions or require any further information on our plans or the Siting Council's procedures, please contact the undersigned at (860) 513-7755, or Mr. Joel M. Rinebold, Executive Director of the Connecticut Siting Council at (860) 827-2935.

Sincerely,

A handwritten signature in cursive script that reads "Peter J. Tyrrell".

Enclosure

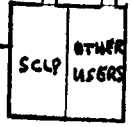


$\Delta = 125^{\circ} 14' 22''$
 $R = 70.00'$
 $L = 150.51'$
 $T = 129.57'$

$\Delta = 123^{\circ} 14' 22''$
 $R = 40.00'$
 $L = 86.04'$
 $T = 74.04'$

NOTE:
 SEE GATE PLAN FOR DETAILS
 WITHIN LEASE LINES.

NEW EQUIPMENT BUILDING



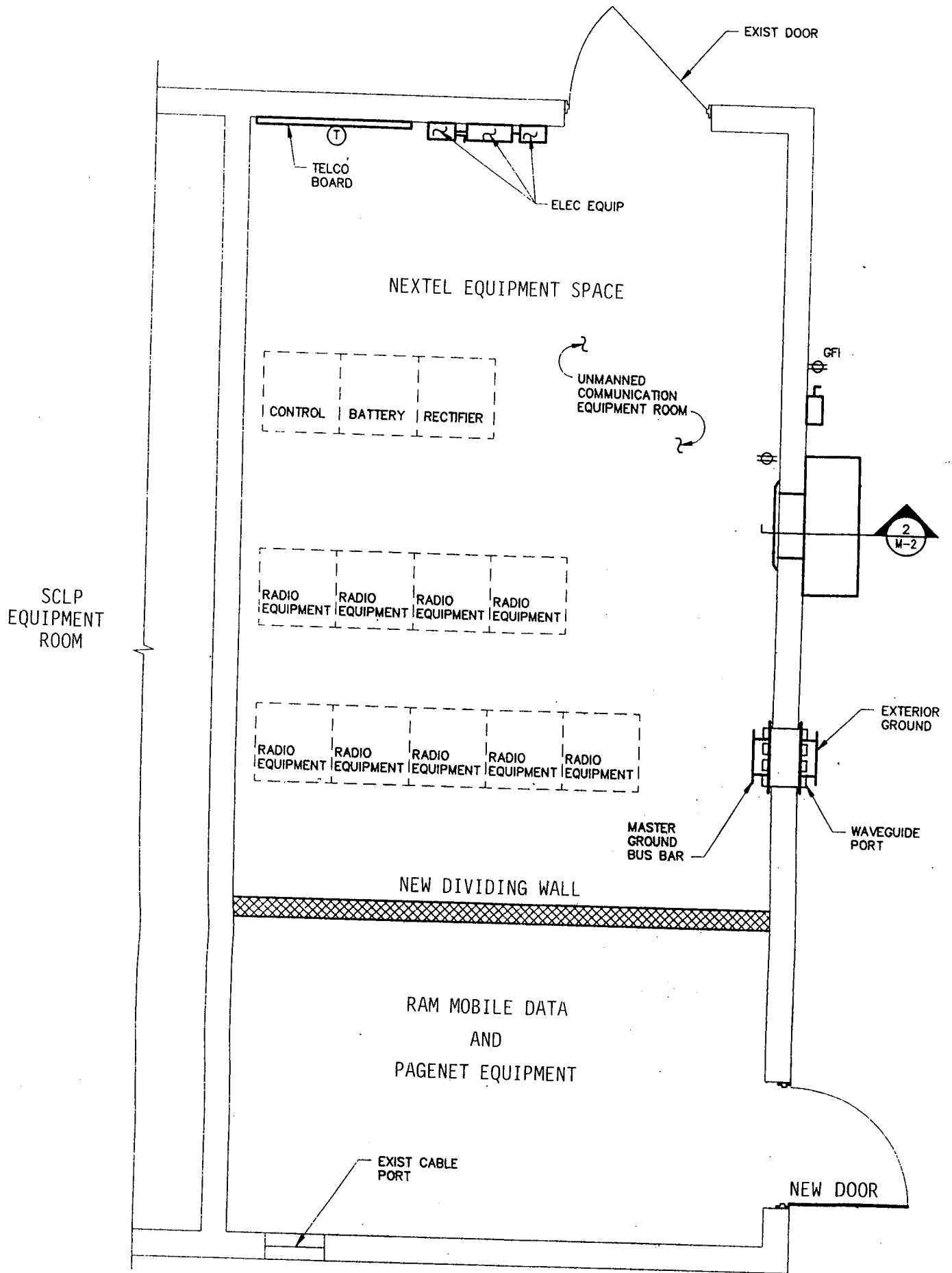
NEW TOWER BY OTHERS

HAYSTACK
 GILTY
 PROTECTED

WETLANDS

PARCEL LEASED TO
 COMET CELLULAR, INC.

SPRINGWICH CELLULAR
 LIMITED PARTNERSHIP
 CELL SITE
 MONROE, CT



SUBTENANT EQUIPMENT ROOMS MONROE, CT CELL SITE