

May 13, 2016

Robert Stein, Chairman
Connecticut Siting Council
Ten Franklin Square
New Britain, CT 06051

RE: Notice of Exempt Modification Pursuant to RCSA § 16-50j-57(a) to Existing Energy Facility Site at 700 Naugatuck Avenue, Milford, Connecticut (“Notice of Exempt Modification”)

Dear Chairman Stein:

The Connecticut Light and Power Company doing business as Eversource Energy (“Eversource”) hereby gives notice to the Connecticut Siting Council of its intent to undertake modifications to Eversource’s Devon Substation (“Project”) described herein.

Proposed Modifications

The Project would take place on property owned by Devon Power LLC, a subsidiary of NRG Energy, Inc., (“NRG”), which is subject to Eversource easement rights for its Devon Substation (“Substation”) located at 700 Naugatuck Avenue off Route 1, Milford, Connecticut and adjacent to NRG’s Genco generating plant. Eversource would relocate existing equipment that is now located within the generating plant controlled areas (control, communications and battery rooms). These areas are no longer being sufficiently maintained, and lack adequate security and a controlled temperature environment for Eversource’s equipment. Eversource proposes an expansion of the existing two control enclosures at the Substation to accommodate the relocation of its existing equipment.

The substation is a bulk power substation that serves as the transmission grid interconnection point for the Devon Power Generation Plant. The Substation consists of two independent ring busses, each with its own control enclosure (no. 1 and no. 2), and twelve 115-kV transmission lines. The rings are interconnected to the generation plant through seven 13.8- to 115-kV step

up transformers which are in turn supplied by 13.8-kV generation facilities, owned by Devon Power.

The proposed modifications to the Substation would include the following:

- a) Removal of approximately 48 feet of the existing fence to accommodate the expansion of control enclosure no. 1 on the west side of the Substation.
- b) Relocate existing stairs and gate to a new location approximately 48 feet north of their existing location to accommodate the expansion of control house no. 1.
- c) Expand existing control enclosure no.1, located on the west side of the Substation. The dimensions of the expansion section will be approximately 22 feet wide by 48 feet long and 14 feet high. The height of the expansion section will be the same as the existing control enclosure.
- d) Expand existing control enclosure no. 2, located in the southerly portion of the Substation. The dimensions of the expansion section of this enclosure will be approximately 22 feet wide by 48 feet long and 14 feet high. The height of the expansion section will be the same as the existing control enclosure.
- e) Relocate the existing Eversource control equipment, metering and monitoring equipment, and batteries from the existing NRG generating plant's control room to the expanded Substation control enclosures.
- f) Installation of foundations for the control enclosures expansions, installation of underground conduit, and cables.
- g) Relocate a catch basin to a new location approximately 12 feet west of the existing location to accommodate the expansion of control enclosure no. 1.

The existing Substation arrangement with the modifications is shown in Drawing No. 18411-92001 General Arrangement Plan.

The Project would not have a substantial adverse environmental effect or cause a significant adverse change or alteration in the physical or environmental characteristics because:

- a) The expansion sections of the control enclosures would be consistent in appearance with the existing enclosures and would not cause any significant adverse change in the physical or environmental characteristics of the Substation. The Substation's fenced area will not be expanded.
- b) There would be no change to the existing television or radio interference at the Substation.

- c) Sound-pressure levels at all points along properties lines would continue to comply with state regulations set out in Regulations of Connecticut State Agencies §§ 22a-69.-1 et seq.
- d) The work would not affect any water resource areas. The Substation is not within a 500- or 100-year flood zone.
- e) Eversource's review of the Connecticut Department of Energy and Environmental Protection's ("CT DEEP") Natural Diversity Data Base did not identify any state-listed endangered, threatened, or special concern species in the vicinity of the Project.
- f) Electric and magnetic field levels at the Substation boundary would not change as a result of the modifications.

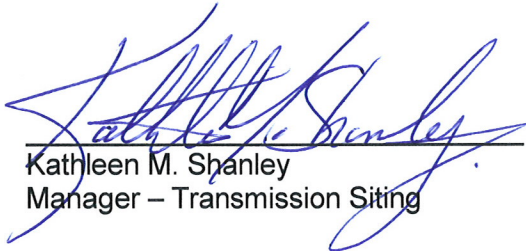
Eversource proposes to commence construction in July 2016. Work is scheduled to be completed by December 2016.

Enclosed are two (2) copies of this Notice of Exempt Modification along with the filing fee of \$625.00.

A notice has been provided to the Town of Milford and the property owner, NRG. There are no abutting property owners to the Substation site.

Communications regarding this Notice of Exempt Modification should be directed to Kathleen M. Shanley at (860) 728-4527.

By:



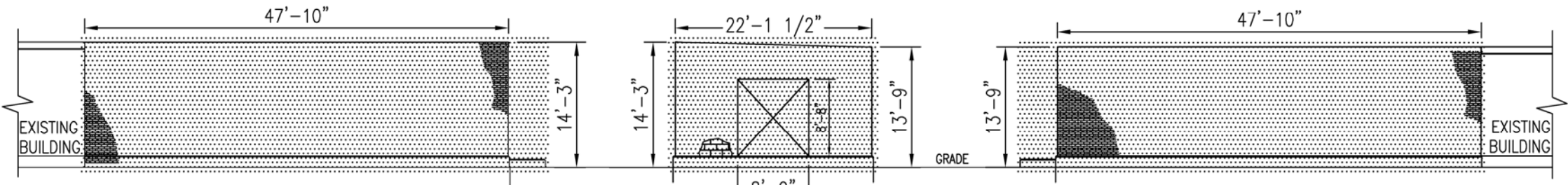
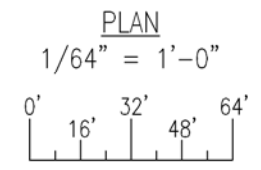
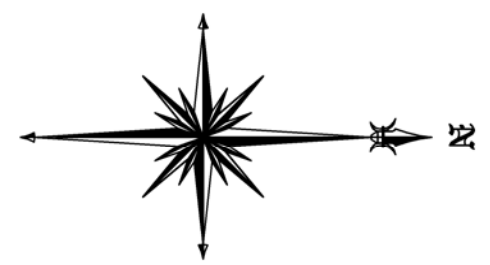
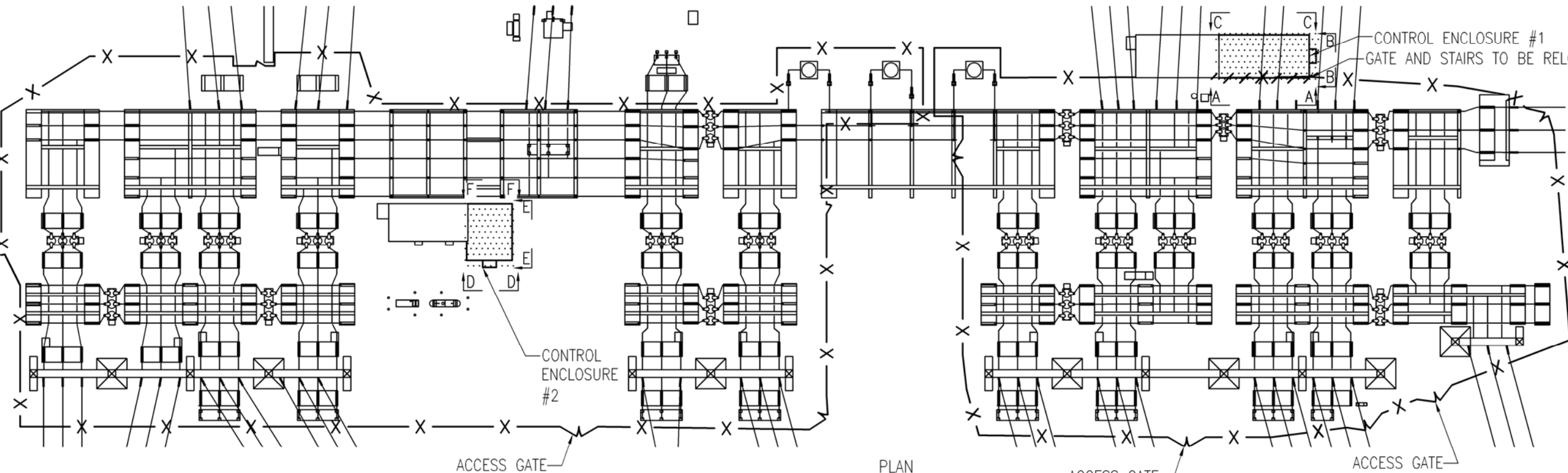
Kathleen M. Shanley
Manager – Transmission Siting

cc: Mayor Benjamin Blake, Town of Milford

Attachment:

Attachment A: Drawing No. 18411-92001– Devon Yard Arrangement – Plan & Sections

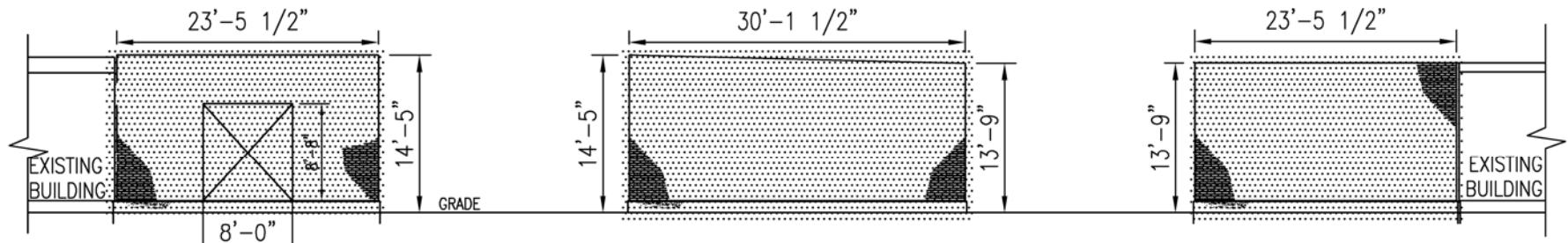
3/23/2016 11:10 AM - abriggs - 0:\00.DMS Upload\090-126_H_Taylor_EE_03-24-16\18411-92001.DWG - REV AJ Additions - ES VER: 05/2015



SECTION A-A
SCALE: 1/16" = 1'-0"

SECTION B-B
SCALE: 1/16" = 1'-0"

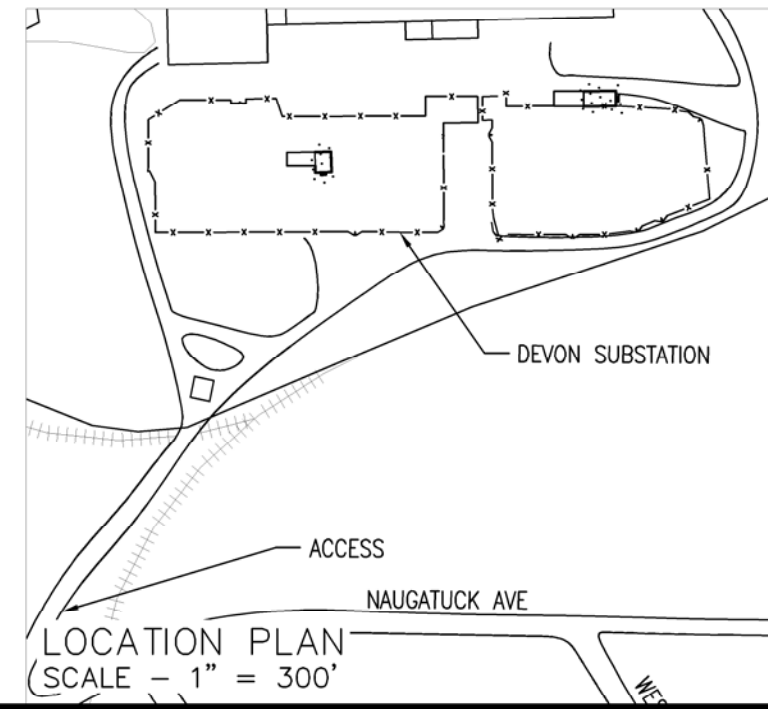
SECTION C-C
SCALE: 1/16" = 1'-0"



SECTION D-D
SCALE: 1/16" = 1'-0"

SECTION E-E
SCALE: 1/16" = 1'-0"

SECTION F-F
SCALE: 1/16" = 1'-0"



EVERSOURCE ENERGY

TITLE						DEVON SUBSTATION PLANS & SECTIONS - CSC PLANS & SECTIONS MILFORD, CT						
BY	KPK	CHKD	REM	APP	RAS	APP	LEG	DATE	7/99	DATE	7/99	
H-SCALE	AS NOTED	SIZE	B	FIELD BOOK & PAGES								
V-SCALE	AS NOTED	V.S.		R.E. DWG								
R.E. PROJ. NUMBER					DWG NO.				18411-92001			

May 12, 2016

Mr. Don Guzzetta
Site Manager, Connecticut Jets
Devon Power Station
734 Naugatuck Ave
Milford, CT 06461

Re: Devon Control Enclosure Modification Project – 700 Naugatuck Ave, Milford, CT

Dear Mr. Guezzetta:

The Connecticut Light and Power Company doing business as Eversource Energy (Eversource) has previously corresponded with you regarding the proposed modifications to the Devon Substation control enclosures located at 700 Naugatuck Ave, Milford on property owned by NRG Energy subject to Eversource Energy easement rights. Since you are the representative of the property owner of record, Eversource is providing written notice of its planned filing of a Notice of Exemption with the Connecticut Siting Council (Council) in early May 2016 related to the proposed modifications to the Devon Substation control enclosures.

The proposed modifications would include the relocation of existing equipment into two control houses that are in a secure area of the Eversource easement property. The control enclosures will be expanded to accommodate the equipment as follows:

- Extend control enclosures #1 on the west side of substation by approximately 22 feet wide by 48 feet long. Height of this control enclosure will remain the same (14 feet).
- Extend control enclosure #2 on the south side of the substation by approximately 22 feet wide by 48 feet long. Height of this control enclosure will remain the same (14 feet).

For more information about this project work, please call the Transmission Information Line at 800-793-2202 or email TransmissionInfo@eversource.com

If the notification of exempt modification is accepted by the CSC, work at the Devon Substation is planned to begin in June 2016 and construction is to be completed in the fourth quarter of 2016.

If you would like to send comments or concerns regarding Eversource's Exempt Modification to the CSC, please send an e-mail to siting.council@ct.gov or a letter to the following address:

Melanie Bachman, Acting Executive Director
Connecticut Siting Council
Ten Franklin Square
New Britain, CT 06051

Sincerely,
Branden
Branden Reid
Project Manager