



STATE OF CONNECTICUT

CONNECTICUT SITING COUNCIL

Ten Franklin Square, New Britain, CT 06051

Phone: (860) 827-2935 Fax: (860) 827-2950

E-Mail: siting.council@po.state.ct.us

Web Site: www.state.ct.us/csc/index.htm

October 24, 2002

Kenneth C. Baldwin
Robinson & Cole
280 Trumbull Street
Hartford, CT 06103-3597

RE: **EM-VER-084-021004** - Cellco Partnership d/b/a Verizon Wireless notice of intent to modify an existing telecommunications facility located at 10 Bona Street, Milford, Connecticut.

Dear Attorney Baldwin:

At a public meeting held on October 23, 2002, the Connecticut Siting Council (Council) acknowledged your notice to modify this existing telecommunications facility, pursuant to Section 16-50j-73 of the Regulations of Connecticut State Agencies.

The proposed modifications are to be implemented as specified here and in your notice dated October 4, 2002. The modifications are in compliance with the exception criteria in Section 16-50j-72 (b) of the Regulations of Connecticut State Agencies as changes to an existing facility site that would not increase tower height, extend the boundaries of the tower site, increase noise levels at the tower site boundary by six decibels, and increase the total radio frequencies electromagnetic radiation power density measured at the tower site boundary to or above the standard adopted by the State Department of Environmental Protection pursuant to General Statutes § 22a-162. This facility has also been carefully modeled to ensure that radio frequency emissions are conservatively below State and federal standards applicable to the frequencies now used on this tower.

This decision is under the exclusive jurisdiction of the Council. Any additional change to this facility will require explicit notice to this agency pursuant to Regulations of Connecticut State Agencies Section 16-50j-73. Such notice shall include all relevant information regarding the proposed change with cumulative worst-case modeling of radio frequency exposure at the closest point of uncontrolled access to the tower base, consistent with Federal Communications Commission, Office of Engineering and Technology, Bulletin 65. Any deviation from this format may result in the Council implementing enforcement proceedings pursuant to General Statutes § 16-50u including, without limitation, imposition of expenses resulting from such failure and of civil penalties in an amount not less than one thousand dollars per day for each day of construction or operation in material violation.

Thank you for your attention and cooperation.

Very truly yours,



Mortimer A. Gelston
Chairman

MAG/laf

c: Honorable James L. Richetelli, Jr., Mayor, City of Milford
Wade Pierce, City Planner, City of Milford
Michele G. Briggs, Southwestern Bell Mobile Systems
Integrated Mobile Services, LLC

280 Trumbull Street
Hartford, CT 06103-3597
Main (860) 275-8200
Fax (860) 275-8299
kbaldwin@rc.com
Direct (860) 275-8345

October 4, 2002

Via Hand Delivery

S. Derek Phelps
Executive Director
Connecticut Siting Council
10 Franklin Square
New Britain, CT 06051

RECEIVED
OCT - 4 2002
CONNECTICUT
SITING COUNCIL

Re: **Notice of Exempt Modification**
10 Bona Street
Milford, Connecticut

Dear Mr. Phelps:

Cellco Partnership d/b/a Verizon Wireless ("Cellco") intends to install antennas on the existing monopole tower at 10 Bona Street in Milford, Connecticut. The Siting Council has approved the shared use of this facility by Cingular Wireless at the 133-foot level (TS-CING-084-010830). Please accept this letter as notification pursuant to R.C.S.A. § 16-50j-73, for construction that constitutes an exempt modification pursuant to R.C.S.A. § 16-50j-72(b)(2). In accordance with R.C.S.A. § 16-50j-73, a copy of this letter is being sent to the Milford Mayor, James L. Richetelli, Jr.

The tower is owned and operated by Integrated Wireless Services, LLC. The facility consists of a 133-foot self-supporting monopole tower, capable of supporting multiple carriers within an approximately 76' x 92' site compound. Cellco proposes to install twelve (12) panel-type antennas at the 93-foot level on the tower and a 12' x 30' single-story equipment shelter near the base of the tower. (See attached Project Plans).

The planned modifications to the Milford facility fall squarely within those activities explicitly provided for in R.C.S.A. § 16-50j-72(b)(2).

1. The proposed modification will not increase the overall height of the existing tower. Cellco's antennas will be mounted with their centerline at the 93-foot level on the 133-foot tower.



Law Offices

BOSTON

HARTFORD

NEW LONDON

STAMFORD

GREENWICH

NEW YORK

www.rc.com

HART1-1050249-1

EM-VER-084-021004

ROBINSON & COLE_{LLP}

S. Derek Phelps
October 4, 2002
Page 2

2. The proposed installation of twelve (12) panel-type antennas and a 12' x 30' equipment shelter will not require an extension of the site boundaries.

3. The proposed antenna modification will not increase the noise levels at the facility by six decibels or more.

4. The operation of the antennas will not increase radio frequency (RF) power density levels at the facility to a level at or above the Federal Communications Commission (FCC) adopted safety standard. The worst-case RF power density calculations for a point at the base of the tower for Cingular and Cellco antennas would be as follows:

Company	Centerline Ht (feet)	Freq. (MHz)	Number of Channels	Power Per Channel (Watts)	Power Density (mW/cm ²)	Standard Limits (mW/cm ²)	% of Limit
Cingular	133	880-894	19	100	0.0386	0.5867	6.58
Cellco	93	880	9	200	0.0748	0.56733	13.19
Total							19.77

Also attached is an engineer's certification that the tower can accommodate the Cingular antennas and the proposed Cellco antennas and related equipment.



ROBINSON & COLE^{LLP}

S. Derek Phelps
October 4, 2002
Page 3

For the foregoing reasons, Cellco respectfully submits that the proposed antenna installation at the Milford facility tower constitutes an exempt modification under R.C.S.A. § 16-50j-72(b)(2).

Sincerely,



Kenneth C. Baldwin

KCB/kmd
Attachments

cc: James L. Richetelli, Milford Mayor
Sandy M. Carter



Cellco Partnership

d.b.a. **verizon** wireless

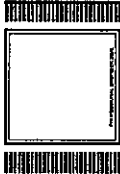
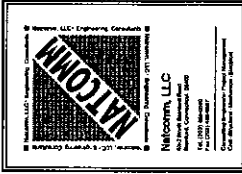
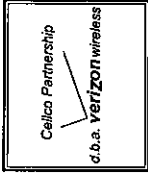
WIRELESS COMMUNICATIONS FACILITY

MILFORD III

10 BONA STREET

MILFORD, CT 06460

REVISIONS	
01	ISSUED
02	REVISED
03	REVISED
04	REVISED
05	REVISED
06	REVISED
07	REVISED
08	REVISED
09	REVISED
10	REVISED
11	REVISED
12	REVISED
13	REVISED
14	REVISED
15	REVISED
16	REVISED
17	REVISED
18	REVISED
19	REVISED
20	REVISED



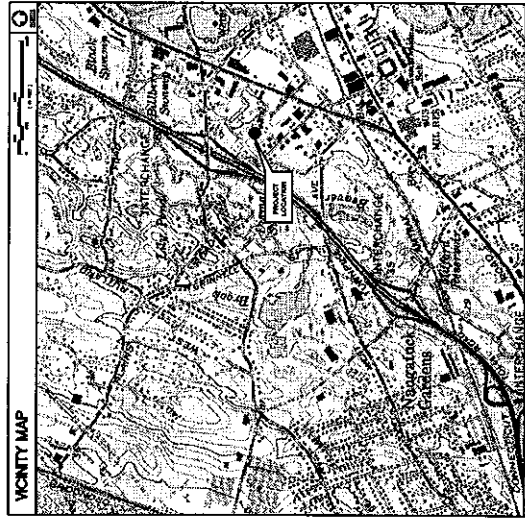
PROJECT NO:	903C
DRAWN BY:	AAJ
CHECKED BY:	CFC
SCALE:	AS NOTED
DATE:	01/22/02

TITLE SHEET

T-1
DWG. 1 OF 2

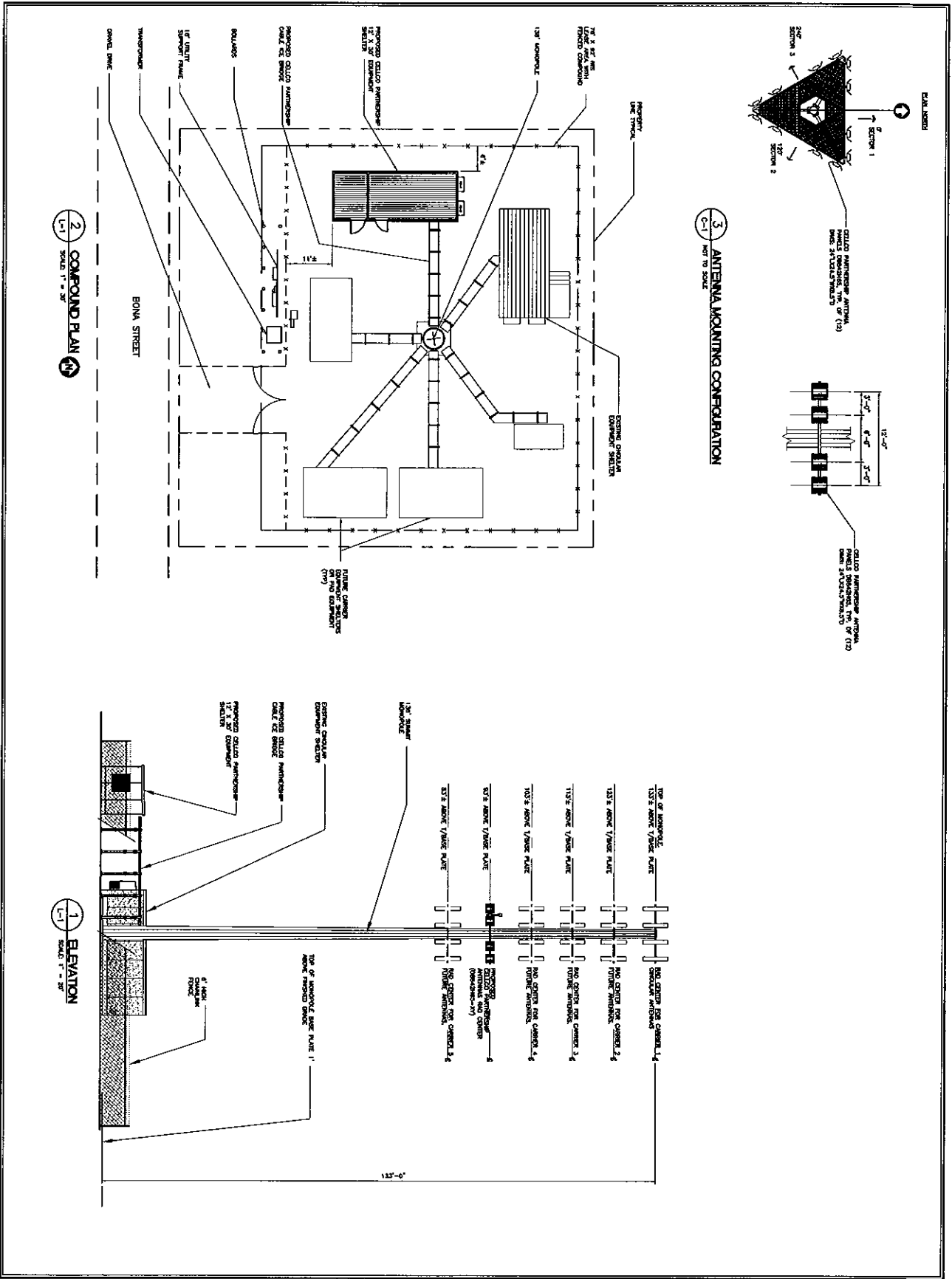
SYMBOL	DESCRIPTION
(Symbol: Circle with cross)	EXISTING OR PROPOSED
(Symbol: Circle with dot)	EXISTING TELEPHONE POLES
(Symbol: Circle with horizontal line)	EXISTING TELEPHONE CABLES
(Symbol: Circle with vertical line)	EXISTING TELEPHONE TOWERS

SHEET NO.	DESCRIPTION	REV. NO.
1-1	TITLE SHEET	02
1-2	COMPASS PLAN AND TOWER ELEVATION	02



PROJECT SUMMARY	
SITE NAME:	MILFORD III
SITE ADDRESS:	10 BONA STREET, MILFORD, CONNECTICUT 06460
PROPERTY OWNER:	JOSEPH N. CLEMENTE, JR., 10 BONA STREET, MILFORD, CONNECTICUT 06460
LEASOR:	JOSEPH N. CLEMENTE, JR., 10 BONA STREET, MILFORD, CONNECTICUT 06460
LEASEE:	CELLCO PARTNERSHIP, 10000 WILSON ROAD, SUITE 100, NORTH CHARLESTON, MD 21132 (301) 462-3000
SUB-LEASER:	CELLCO PARTNERSHIP, 10000 WILSON ROAD, SUITE 100, NORTH CHARLESTON, MD 21132 (301) 462-3000
APPLICANT:	CELLCO PARTNERSHIP, 10000 WILSON ROAD, SUITE 100, NORTH CHARLESTON, MD 21132 (301) 462-3000
CONTACT PERSON:	CELLCO PARTNERSHIP, 10000 WILSON ROAD, SUITE 100, NORTH CHARLESTON, MD 21132 (301) 462-3000
DATE OF ORDER:	JANUARY 11, 2002
DATE OF SITE VISIT:	NOVEMBER 11, 2001
DATE OF SITE VISIT:	NOVEMBER 11, 2001
DATE OF SITE VISIT:	NOVEMBER 11, 2001

GENERAL NOTES	
1.	PROVIDED AND EXISTING ANTENNA LOCATIONS AND HEIGHTS PROVIDED BY CELLCO PARTNERSHIP.
2.	SEE SITE DIRECTIONS FOR ANTENNA LOCATIONS AND HEIGHTS PROVIDED BY CELLCO PARTNERSHIP.
3.	SEE SITE DIRECTIONS FOR ANTENNA LOCATIONS AND HEIGHTS PROVIDED BY CELLCO PARTNERSHIP.
4.	SEE SITE DIRECTIONS FOR ANTENNA LOCATIONS AND HEIGHTS PROVIDED BY CELLCO PARTNERSHIP.
5.	SEE SITE DIRECTIONS FOR ANTENNA LOCATIONS AND HEIGHTS PROVIDED BY CELLCO PARTNERSHIP.
6.	SEE SITE DIRECTIONS FOR ANTENNA LOCATIONS AND HEIGHTS PROVIDED BY CELLCO PARTNERSHIP.
7.	SEE SITE DIRECTIONS FOR ANTENNA LOCATIONS AND HEIGHTS PROVIDED BY CELLCO PARTNERSHIP.
8.	SEE SITE DIRECTIONS FOR ANTENNA LOCATIONS AND HEIGHTS PROVIDED BY CELLCO PARTNERSHIP.
9.	SEE SITE DIRECTIONS FOR ANTENNA LOCATIONS AND HEIGHTS PROVIDED BY CELLCO PARTNERSHIP.
10.	SEE SITE DIRECTIONS FOR ANTENNA LOCATIONS AND HEIGHTS PROVIDED BY CELLCO PARTNERSHIP.
11.	SEE SITE DIRECTIONS FOR ANTENNA LOCATIONS AND HEIGHTS PROVIDED BY CELLCO PARTNERSHIP.
12.	SEE SITE DIRECTIONS FOR ANTENNA LOCATIONS AND HEIGHTS PROVIDED BY CELLCO PARTNERSHIP.
13.	SEE SITE DIRECTIONS FOR ANTENNA LOCATIONS AND HEIGHTS PROVIDED BY CELLCO PARTNERSHIP.
14.	SEE SITE DIRECTIONS FOR ANTENNA LOCATIONS AND HEIGHTS PROVIDED BY CELLCO PARTNERSHIP.
15.	SEE SITE DIRECTIONS FOR ANTENNA LOCATIONS AND HEIGHTS PROVIDED BY CELLCO PARTNERSHIP.
16.	SEE SITE DIRECTIONS FOR ANTENNA LOCATIONS AND HEIGHTS PROVIDED BY CELLCO PARTNERSHIP.
17.	SEE SITE DIRECTIONS FOR ANTENNA LOCATIONS AND HEIGHTS PROVIDED BY CELLCO PARTNERSHIP.
18.	SEE SITE DIRECTIONS FOR ANTENNA LOCATIONS AND HEIGHTS PROVIDED BY CELLCO PARTNERSHIP.
19.	SEE SITE DIRECTIONS FOR ANTENNA LOCATIONS AND HEIGHTS PROVIDED BY CELLCO PARTNERSHIP.
20.	SEE SITE DIRECTIONS FOR ANTENNA LOCATIONS AND HEIGHTS PROVIDED BY CELLCO PARTNERSHIP.

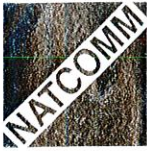


2 COMPOUND PLAN
SCALE: 1" = 30'

1 ELEVATION
SCALE: 1" = 30'

3 ANTENNA MOUNTING CONFIGURATION
NOT TO SCALE

<p>NATCOM NATCOM, LLC 1000 North Main Street Malden, MA 02148 Tel: (617) 282-8888 Fax: (617) 282-8889</p>		<p>Celio Partnership d/b/a Verizon Wireless</p>																	
<p>MALDEN II 13 BONA STREET MALDEN, CT 06450</p>		<p>REVISIONS</p> <table border="1"> <tr> <th>NO.</th> <th>DATE</th> <th>BY</th> <th>DESCRIPTION</th> </tr> <tr> <td> </td> <td> </td> <td> </td> <td> </td> </tr> <tr> <td> </td> <td> </td> <td> </td> <td> </td> </tr> <tr> <td> </td> <td> </td> <td> </td> <td> </td> </tr> </table>		NO.	DATE	BY	DESCRIPTION												
NO.	DATE	BY	DESCRIPTION																
<p>PROJECT NO.: 803C DRAWN BY: AM CHECKED BY: CFC SCALE: AS NOTED DATE: 9/2/02</p>		<p>COMPUND AND ELEVATION</p> <p>C-1 DWG. 2 OF 2</p>																	



October 2, 2002

Mr. Mark Gauger
Verizon Wireless
99-101 East River Road
East Hartford, CT 06002

Re: *Verizon Wireless-Communication facility*
10 Bona St.,
Milford, CT 06460

Natcomm Project No. 903C

Dear Mark,

We have reviewed the proposed Verizon antenna installation at the above referenced site. The purpose of the review is to determine the adequacy of an existing 133 ft. monopole to support the proposed antennas. The review considered the effects of wind load, dead load, ice load and seismic forces in accordance with TIA/EIA-222-F and Connecticut State Building Code. Structural design documents prepared by PAUL J. FORD AND COMPANY structural engineers - SUMMIT MANUFACTURAL, LLC job #29201-1210 dated December 3, 2000 were used as reference material along with tower loading information furnished by Cingular Wireless.

The proposed antenna loading is as follows:

- Verizon: Twelve (12) DB842H65E-XY mounted on 14' low profile platform at an elevation of 93 ft.

The existing antenna configuration is as follows:

- Cingular: Twelve (12) CSS DUO4-8670 & Six (6) dual band tower top amplifiers mounted on 14' low profile platform at an elevation of 133 ft.

The future antenna loading is as follows:

- Future carrier: Twelve (12) DAPA 48000 PCS mounted on a 14 ft. low profile platform at an elevation of 123 ft.
- Future carrier: Twelve (12) DAPA 48000 PCS mounted on a 14 ft. low profile platform at an elevation of 113 ft.
- Future carrier: Twelve (12) DAPA 48000 PCS mounted on a 14 ft. low profile platform at an elevation of 103 ft.
- Future carrier: Twelve (12) DAPA 48000 PCS mounted on a 14 ft. low profile platform at an elevation of 83 ft.

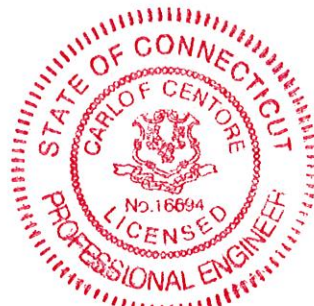
Based on the information provided, the existing structure meets all the requirements of the TIA/EIA-222-F standards for a basic wind speed of 85mph with ½ inch radial ice.

In conclusion, the existing 133 ft. monopole is adequate to support the proposed Verizon antennas.

If there are any questions regarding this matter, please feel free to call.

Regards,

Emad Mourad, P.E.
Structural Engineer



Integrated Mobile Services, LLC
63-3 North Branford Road
Branford, CT 06405

Connecticut Siting Council



Approved by Council _____

Date Complete: _____

Site visit required? _____

File I.D. EM-VER-084-021004

Address 10 Bona Street
Milford

Checklist for Exempt Modifications and Tower Sharing

1. Tower Owner Integrated Wireless Tower Height 133 Type M Total Height _____
2. Proposed Carrier Verizon DB842765E-XY
Number of antennas 12 Type panel Height 93 Extension _____
Other proposed equipment on tower: _____
Proposed size/location of equipment building/cabinets: 12x30 shelter
Proposed site clearing/grading: _____
Fence line modification: _____
Other proposed items: _____
3. Current carriers: Cing Height: 133 Power density %: ~~6.33~~ 9.33

4. Power density calculation: Proposed carrier percentage: 12.76 Cumulative percentage: 22.09
5. Town approval date (if necessary): _____ Town application date (if necessary): _____
6. Structural analysis: no mods necs.
7. Coordinates Latitude: 41-13-12.3 Longitude: 73-04-32.8 Elevation: _____
8. Town(s) CEO notified of application to Siting Council? cc to mayor

Site Visit Information

Date of visit: _____

9. Description of site features, surrounding land uses, and sight lines:

Issues:

Filing Documentation for Meeting

- 1.
- 2.
- 3.
- 4.



STATE OF CONNECTICUT

CONNECTICUT SITING COUNCIL

Ten Franklin Square, New Britain, CT 06051

Phone: (860) 827-2935 Fax: (860) 827-2950

E-Mail: siting.council@po.state.ct.us

Web Site: www.state.ct.us/csc/index.htm

October 7, 2002

Honorable James L. Richetelli, Jr.
Mayor
City of Milford
Parsons Complex
70 West River Street
Milford, CT 06460-3364

RE: **EM-VER-084-021004** - Cellco Partnership d/b/a Verizon Wireless notice of intent to modify an existing telecommunications facility located at 10 Bona Street, Milford, Connecticut.

Dear Mayor Richetelli:

The Connecticut Siting Council (Council) received this request to modify an existing telecommunications facility, pursuant to Regulations of Connecticut State Agencies Section 16-50j-72.

The Council will consider this item at the next meeting tentatively scheduled for October 23, 2002, at 1:30 p.m. in Hearing Room One, Ten Franklin Square, New Britain, Connecticut.

Please call me or inform the Council if you have any questions or comments regarding this proposal.

Thank you for your cooperation and consideration.

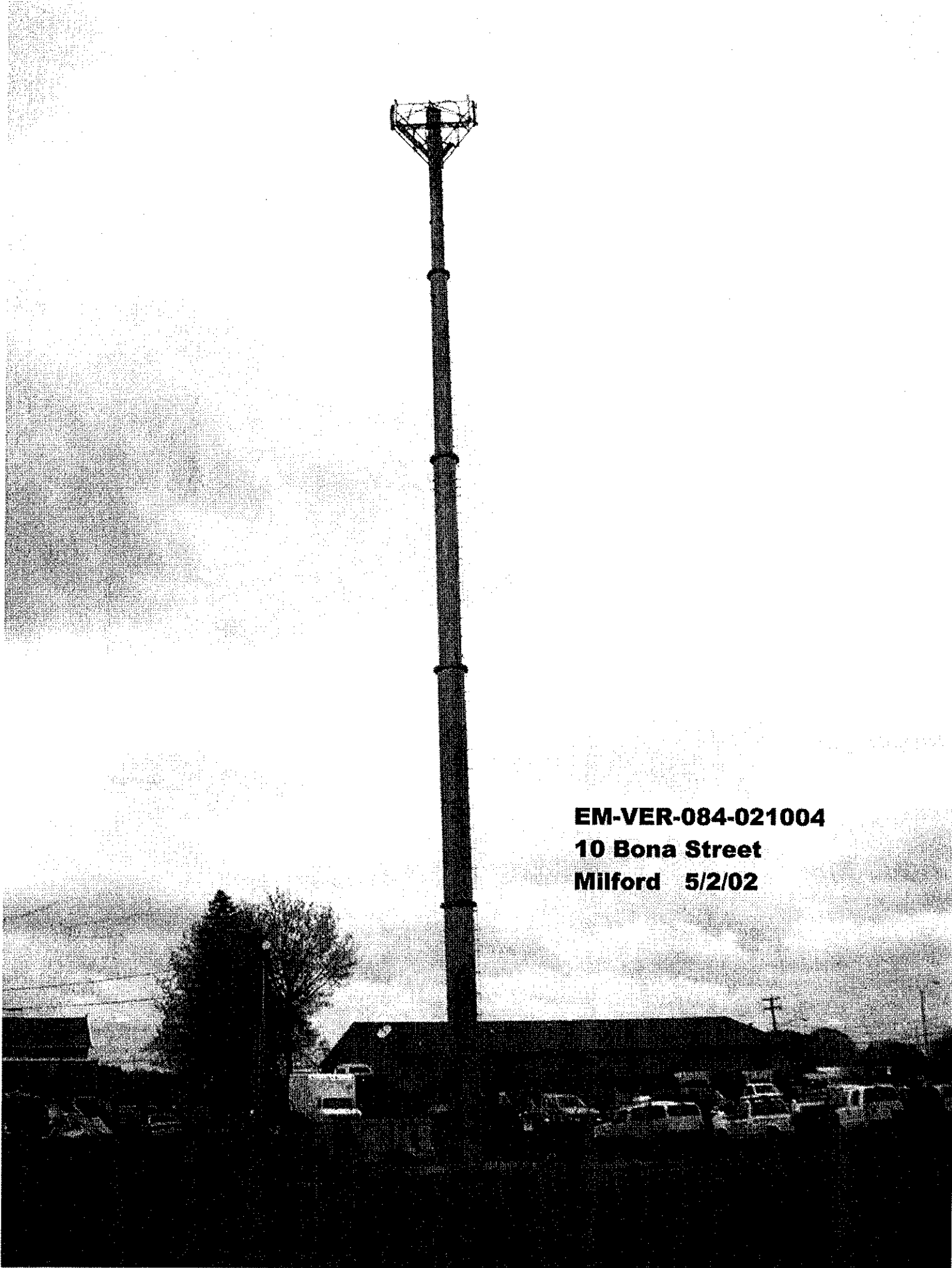
Very truly yours,

S. Derek Phelps
Executive Director

SDP/slm

Enclosure: Notice of Intent

c: Wade Pierce, City Planner, City of Milford



EM-VER-084-021004

10 Bona Street

Milford 5/2/02