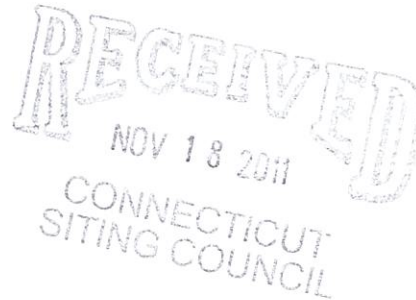


November 14, 2011

Chairman Robert Stein
Connecticut Siting Council
10 Franklin Square
New Britain, CT 06051



SUBJECT: Sprint Spectrum L.P.'s Notice of Intent to Make an Exempt Modification to an Existing Facility at 290 Preston Avenue, Middletown, CT 06457 (Site # CT43XC816)

Dear Chairman Stein:

Pursuant to R.C.S.A. Sections 16-50j-73 and 16-50j-72(b), Sprint Spectrum L.P. (Sprint), hereby gives notice to the Connecticut Siting Council (Council) and the City of Middletown of its intent to make an exempt modification to an existing telecommunications facility located at 290 Preston Avenue, Middletown, Connecticut.

Sprint plans to install a hydrogen fuel cell at its 290 Preston Avenue facility to provide emergency backup power in the event of an electric outage. This planned installation does not constitute a modification subject to the Council's review as it falls within those activities provided for in R.C.S.A. Section 16-50j-72(b)(2). Specifically, this installation will not change the height of the existing tower, will not extend the boundaries of the existing compound, will not increase noise levels at the site by six decibels or more, and will not increase the total radio frequency electromagnetic radiation power density at the site to levels above applicable standards.

PROPOSED INSTALLATION

Sprint plans to install a 5 kW Altery hydrogen fuel cell generator within the existing fenced equipment compound. The fuel cell will be inside a cabinet measuring 3'6" x 2'2" x 6'0". There will also be a hydrogen cylinder storage cabinet with overall dimensions of 4'8" x 4'8" x 6'0".

Please contact me at 703.533.1006 or Hulshart@earthlink.net should you have any questions about this planned modification.

Sincerely,

A handwritten signature in blue ink, appearing to read "Mark Hulshart", with a long horizontal flourish extending to the right.

Mark Hulshart
Principal

cc: Mayor Daniel Drew, City of Middletown
Brenda and Ernie Trumpold (property owner)

Specifications



Allergy Freedom Power™ 5 kW System installed in an FPS Power Cabinet		FPS-524-240	FPS-524-240-400	FPS-548-240	FPS-548-240-405
Physical	Dimensions (w x d x h)	26" x 42" x 72" [66 cm x 107 cm x 183 cm]			
	Weight	515 lb [234 kg]	706 lb [320 kg]	515 lb [234 kg]	706 lb [320 kg]
	Number of FPS Engines	1			
	Number of TPMs	0	1	0	1
Performance	Rated power	5 kW			
	Rated current	210 A		105 A	
	Operating voltage (nominal) ¹	24 VDC		48 VDC	
	Operating voltage (range) ¹	21 to 29 VDC		42 to 58 VDC	
	Standing Input Current (nominal)	1.92 A @ 24 VDC		0.96 A @ 48 VDC	
Operation	Ambient temperature ²	- 4 °F to 104 °F [- 20 °C to +40 °C]			
	Relative humidity, noncondensing	5 to 100%			
	Location	Outdoor only			
	Auxiliary AC in ²	120 V, 60 Hz, 10 A, single phase			
Storage	Ambient temperature	+ 40 °F to +113 °F [+4 °C to +45 °C]			
	Relative humidity, noncondensing	5 to 100%			
Fuel	Gaseous hydrogen purity	Hydrogen (H ₂) 99.95% certified Industrial Grade			
	Supply pressure range	40 to 150 PSIG [2.8 to 10.5 kg/cm ²]			
	Typical operating pressure	100 PSIG [7.03 kg/cm ²]			
	Consumption	300 g/hour @ 5 kW			
Monitoring / Control	Standard	Ethernet, USB, Serial, 4 Dry Contacts			
	Optional	Wireless Telemetry			
	Rectifier Supply Voltage	n/a	27.0 ± 0.6 VDC	n/a	54.0 ± 0.6 VDC

¹Polarity is determined by customer requirements and ground connections.

²For operation below +10 °C, the FPS must be connected to the grid and supplied with AC power until a grid failure, at which time the heat generated by the FPS will be sufficient to maintain operation of the FPS at temperatures between -20 °C and +10 °C.

Sprint



SITE NAME: PRESTON AVENUE

SITE NUMBER: CT43XC816

SITE ADDRESS: 290 PRESTON AVENUE
MIDDLETOWN, CT 06492

SITE TYPE: EXISTING 150'-0" MONOPOLE

Sprint

6580 SPRINT PARKWAY
OVERLAND PARK, KANSAS 66251



BLACK & VEATCH

10950 GRANDVIEW DRIVE
OVERLAND PARK, KANSAS 66210
(913) 458-2000

PROJECT NO: 168202

DRAWN BY: AKJ

CHECKED BY: MB

SITE INFORMATION

SITE ADDRESS:
290 PRESTON AVENUE
MIDDLETOWN, CT 06492

PROPERTY OWNER:
ERNEST & BRENDA TRUMPOLD
290 PRESTON AVENUE
AVENUE MIDDLETOWN, CT

EQUIPMENT SUPPLIER:
ALTERGY
140 BLUE RAVINE ROAD
FOLSOM, CA 95630

JERRY MEYERS
913-461-3674
jerry.meyers@altergy.com

POWER COMPANY:
CONNECTICUT POWER AND LIGHT

TELCO COMPANY:
NA

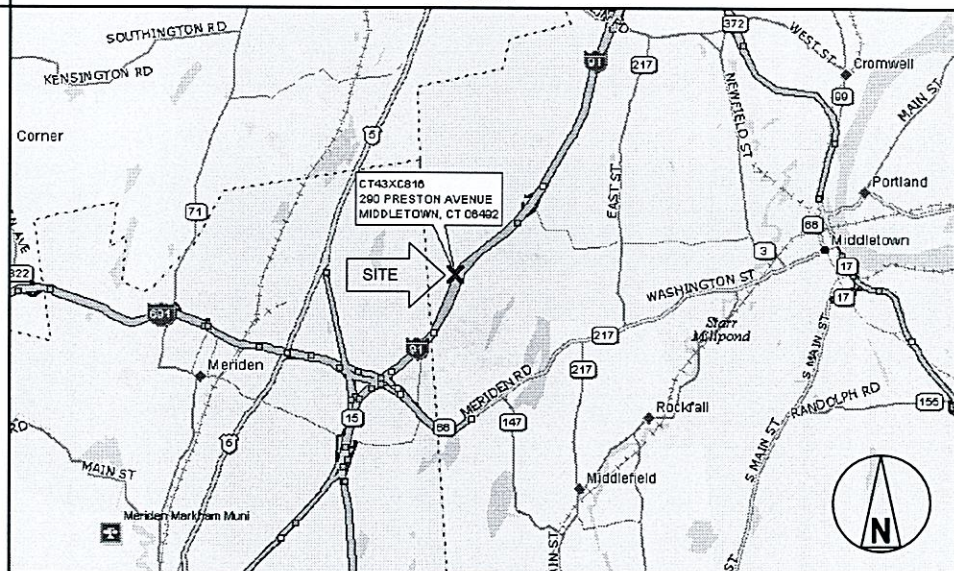
COUNTY:
MIDDLESEX

LATITUDE (NAD83):
41° 33' 26.49" N
41.55736

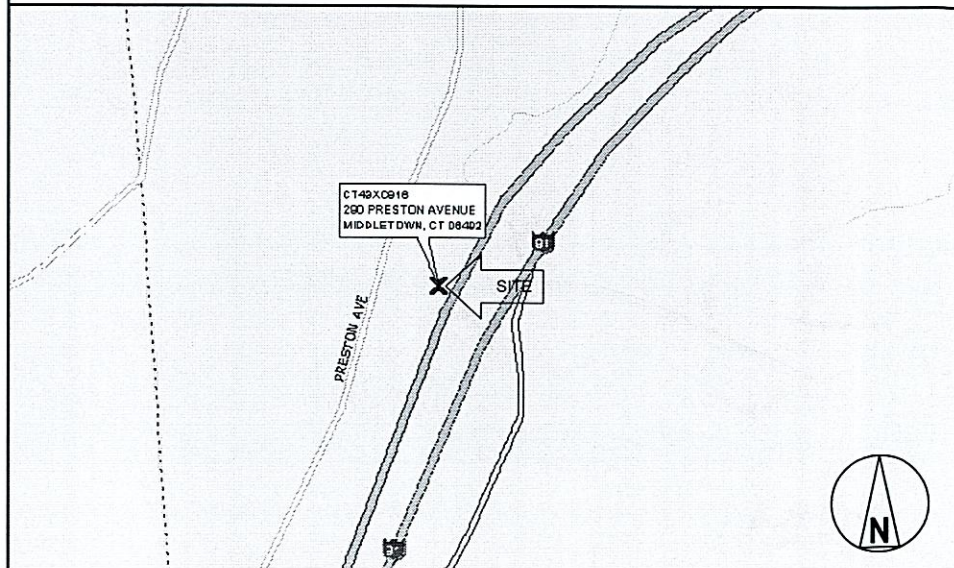
LONGITUDE (NAD83):
72° 44' 35.76" W
-72.74327

CONTACT ENGINEER:
BRYAN HANSEN
WORK: 913-458-7343
E-MAIL: hansenbj@bv.com

AREA MAP



LOCATION MAP



APPLICABLE CODES

ALL WORK SHALL COMPLY WITH THE FOLLOWING APPLICABLE CODES:

2009 INTERNATIONAL BUILDING CODE WITH STATE MODIFICATIONS

2009 INTERNATIONAL MECHANICAL CODE

2009 INTERNATIONAL PLUMBING CODE

2009 NEC NATIONAL ELECTRICAL CODE

IN THE EVENT OF CONFLICT, THE MOST RESTRICTIVE CODE SHALL PREVAIL

PROJECT DESCRIPTION

INSTALL POWER BACK UP EQUIPMENT TO EXISTING SITE WITHIN EXISTING COMPOUND. INSTALL (1) NEW FUEL CELL WITH (1) FUEL STORAGE CABINET ON CONCRETE PAD AND CONNECT TO THE SITE'S DC POWER PLANT BUS.

APPROVALS

THE FOLLOWING PARTIES HEREBY APPROVE AND ACCEPT THESE DOCUMENTS & AUTHORIZE THE SUBCONTRACTOR TO PROCEED WITH THE CONSTRUCTION DESCRIBED HEREIN. ALL DOCUMENTS ARE SUBJECT TO REVIEW BY THE LOCAL BUILDING DEPARTMENT & MAY IMPOSE CHANGES OR MODIFICATIONS.

ERICSSON: _____ DATE: _____

BLACK & VEATCH: _____ DATE: _____

COMMENTS: _____

DRIVING DIRECTIONS FROM MERIDEN MARKHAM MUNICIPAL AIRPORT

MERIDEN MARKHAM MUNICIPAL AIRPORT: HEAD NORTH ON EVANSVILLE AVENUE TOWARD BAKER AVENUE, TURN RIGHT ONTO MAIN STREET, TAKE THE 3RD LEFT ONTO HANOVER ROAD, CONTINUE ONTO BRADLEY AVENUE, TURN RIGHT ONTO WEST MAIN STREET, TURN LEFT ONTO LEWIS AVENUE, TURN RIGHT TO MERGE ONTO I-691 EAST TOWARD MIDDLETOWN/I-91, CONTINUE ONTO CT-66 EAST, TAKE EXIT 12 FOR PRESTON AVENUE, TURN LEFT ONTO PRESTON AVENUE, CONTINUE ONTO BALDWIN AVENUE, TURN RIGHT ONTO THURROTT DRIVE, CONTINUE ONTO PRESTON AVENUE, DISTION WILL BE ON THE RIGHT.

DRAWING INDEX

T-1 TITLE SHEET & PROJECT DATA

C-1 OVERALL SITE PLAN

C-2 SITE PLAN

S-1 EQUIPMENT CABINET DETAILS

S-2 CONCRETE PAD DETAILS

M-1 HYDROGEN PIPING SCHEMATIC

E-1 ELECTRICAL ONE-LINE DIAGRAMS

E-2 OVERALL CONDUIT DETAILS

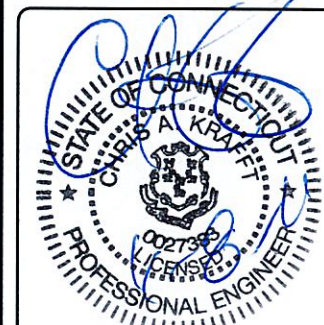
E-3 ELECTRICAL WIRING DIAGRAM

E-4 FUEL CELL INTERNAL WIRING DIAGRAM

G-1 GROUNDING PLAN AND DETAILS

ENGINEER OF RECORD

CHRIS KRAFFT
PE # 080438
BLACK & VEATCH CORPORATION



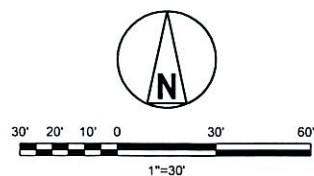
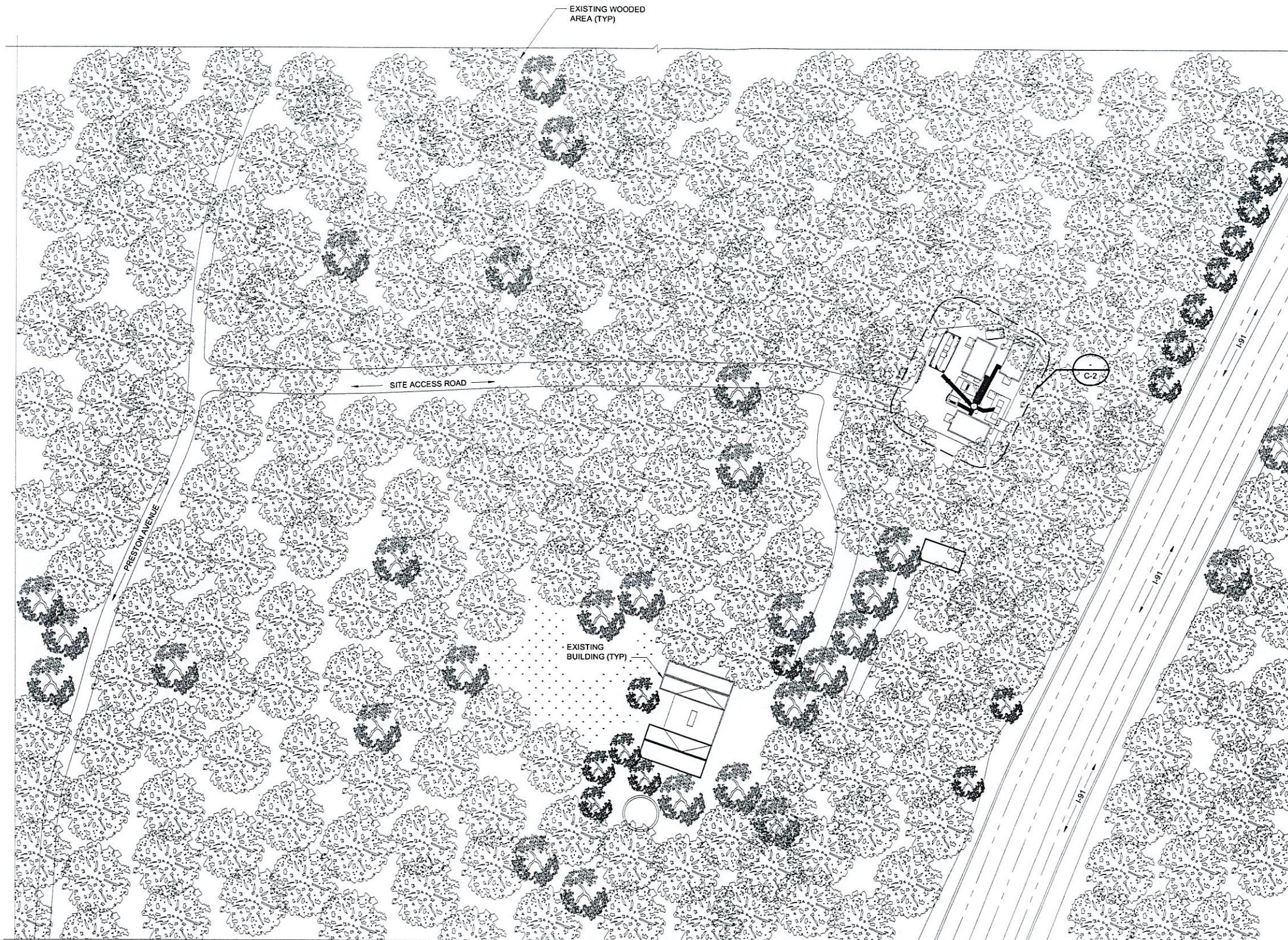
IT IS A VIOLATION OF LAW FOR ANY PERSON, UNLESS THEY ARE ACTING UNDER THE DIRECTION OF A LICENSED PROFESSIONAL ENGINEER, TO ALTER THIS DOCUMENT.

CT43XC816
PRESTON AVENUE
290 PRESTON AVENUE
MIDDLETOWN, CT 06492
CO-LOCATION

SHEET TITLE
**TITLE SHEET &
PROJECT DATA**

SHEET NUMBER

T-1



OVERALL SITE PLAN



6580 SPRINT PARKWAY
OVERLAND PARK, KANSAS 66251

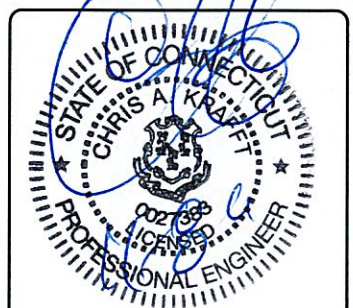


BLACK & VEATCH

10950 GRANDVIEW DRIVE
OVERLAND PARK, KANSAS 66210
(913) 458-2000

PROJECT NO:	168202
DRAWN BY:	AKJ
CHECKED BY:	MB

0	11/07/11	ISSUED FOR CONSTRUCTION
REV	DATE	DESCRIPTION

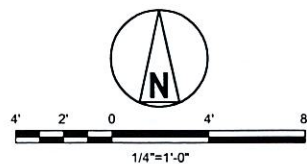
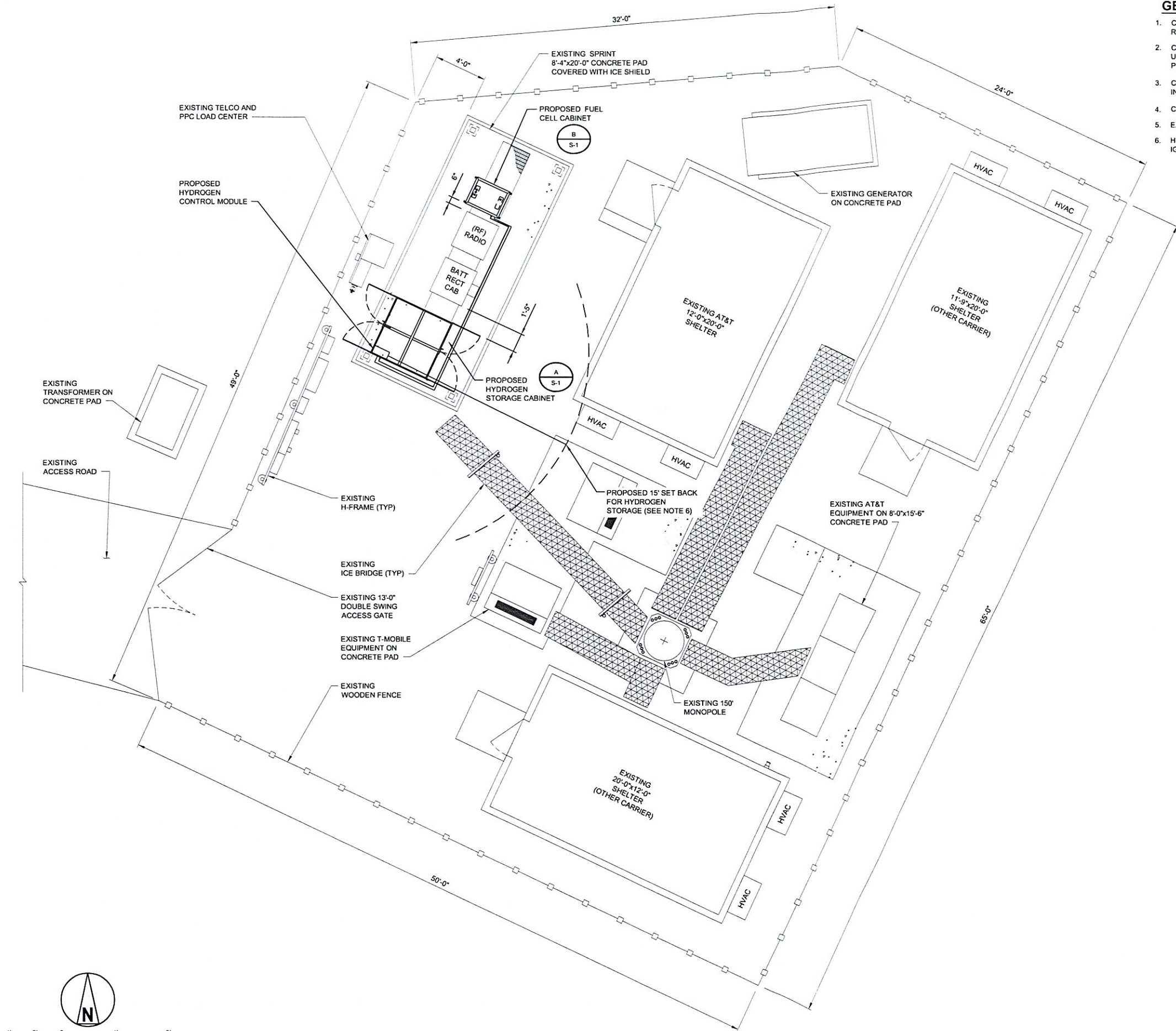


IT IS A VIOLATION OF LAW FOR ANY PERSON,
UNLESS THEY ARE ACTING UNDER THE
DIRECTION OF A LICENSED PROFESSIONAL
ENGINEER, TO ALTER THIS DOCUMENT.

CT43XC816
PRESTON AVENUE
290 PRESTON AVENUE
MIDDLETOWN, CT 06492
CO-LOCATION

SHEET TITLE
**OVERALL
SITE PLAN**

SHEET NUMBER
C-1



SITE PLAN

GENERAL NOTES:

1. CONTRACTOR SHALL GROUND ALL NEW EQUIPMENT TO THE NEAREST GROUND RING (SEE G-1).
2. CONTRACTOR SHALL ROUTE CONDUIT TO AVOID TRIP HAZARDS BY EITHER UTILIZING EXISTING CABLE TRAY, OVERHEAD ICE BRIDGE, UNDERNEATH RAISED PLATFORM, OR AROUND EDGE OF CONCRETE PAD.
3. CONTRACTOR SHALL FOLLOW ALL MANUFACTURER'S RECOMMENDATIONS FOR INSTALLATION OF ALL NEW EQUIPMENT.
4. CONTRACTOR SHALL VERIFY THE ALARM CABLES ARE OF SUFFICIENT LENGTH.
5. EXCESS CABLES SHALL BE LACED IN A NEAT AND ORGANIZED MANNER.
6. HYDROGEN STORAGE CABINET HAS A REQUIRED SET BACK OF 15' FROM IGNITION SOURCES & AIR INTAKES.



6580 SPRINT PARKWAY
OVERLAND PARK, KANSAS 66251



BLACK & VEATCH

10950 GRANDVIEW DRIVE
OVERLAND PARK, KANSAS 66210
(913) 458-2000

PROJECT NO:	168202
DRAWN BY:	AKJ
CHECKED BY:	MB

0	11/07/11	ISSUED FOR CONSTRUCTION
REV	DATE	DESCRIPTION



IT IS A VIOLATION OF LAW FOR ANY PERSON,
UNLESS THEY ARE ACTING UNDER THE
DIRECTION OF A LICENSED PROFESSIONAL
ENGINEER, TO ALTER THIS DOCUMENT.

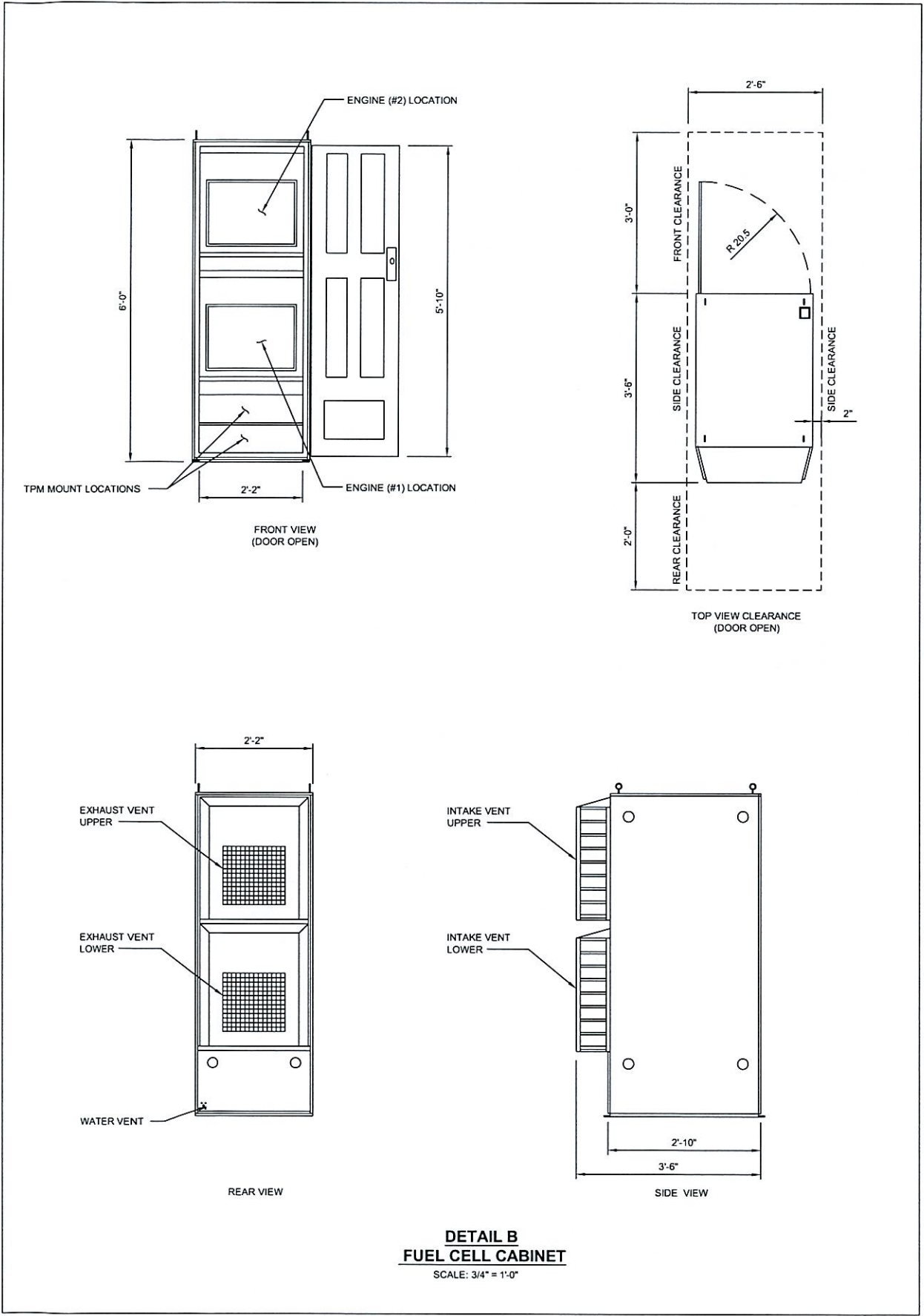
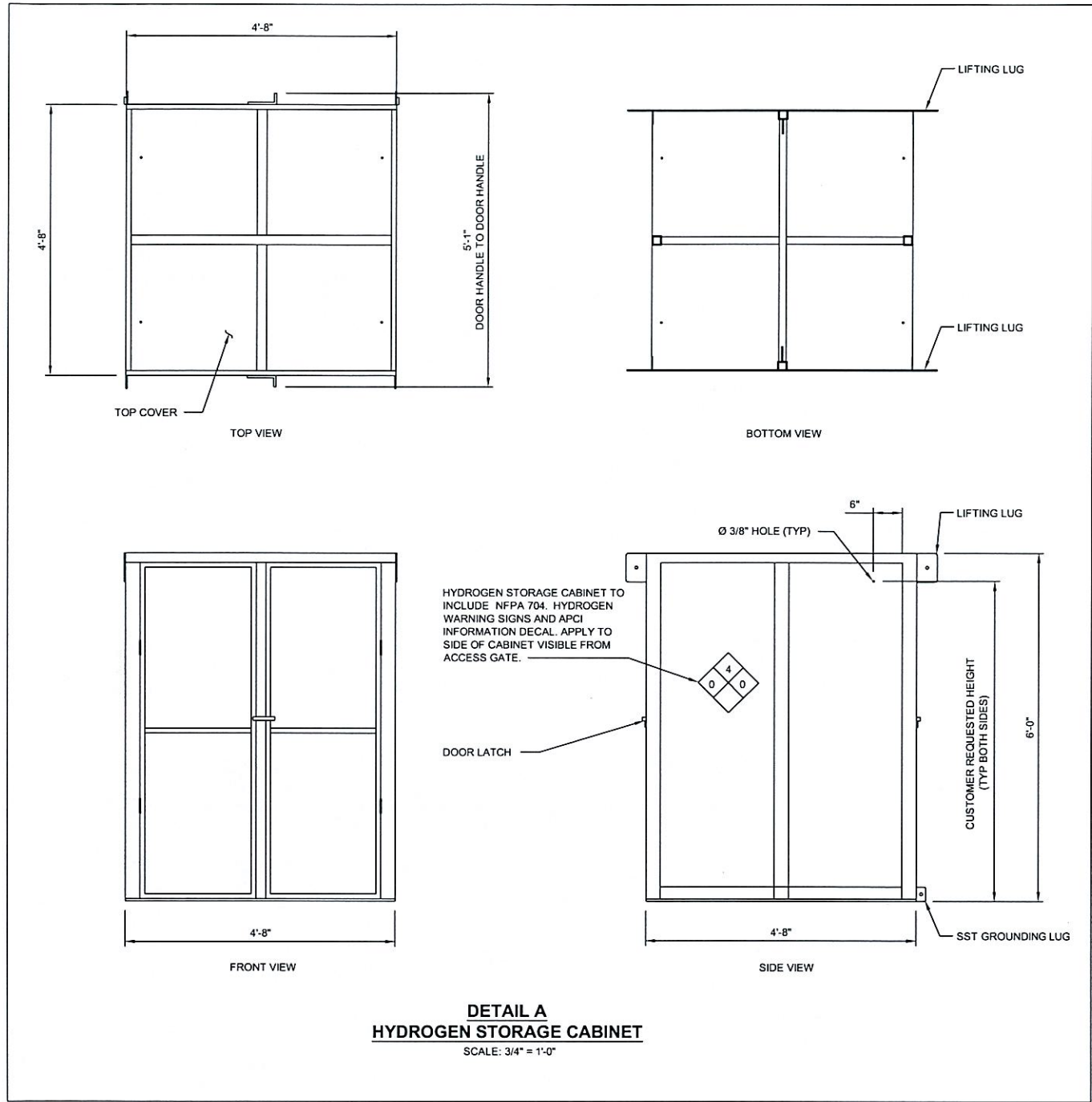
CT43XC816
PRESTON AVENUE
290 PRESTON AVENUE
MIDDLETOWN, CT 06492
CO-LOCATION

SHEET TITLE

SITE PLAN

SHEET NUMBER

C-2



Sprint

6580 SPRINT PARKWAY
OVERLAND PARK, KANSAS 66251



BLACK & VEATCH

10950 GRANDVIEW DRIVE
OVERLAND PARK, KANSAS 66210
(913) 458-2000

PROJECT NO:	168202
DRAWN BY:	AKJ
CHECKED BY:	MB

REV	DATE	DESCRIPTION
0	11/07/11	ISSUED FOR CONSTRUCTION



IT IS A VIOLATION OF LAW FOR ANY PERSON, UNLESS THEY ARE ACTING UNDER THE DIRECTION OF A LICENSED PROFESSIONAL ENGINEER, TO ALTER THIS DOCUMENT.

CT43XC816
PRESTON AVENUE
290 PRESTON AVENUE
MIDDLETOWN, CT 06492
CO-LOCATION

SHEET TITLE
**EQUIPMENT CABINET
DETAILS**

SHEET NUMBER
S-1