
CONNECTICUT

UCONNECT

Monday, August 6, 2000

Joel M. Rinebold
Executive Director
Connecticut Siting Council
10 Franklin Square
New Britain, CT 06051
(860) 827-2950 Fax

RECEIVED

AUG - 9 2000

CONNECTICUT
SITING COUNCIL

RE: Tower Consolidation and Nextel Communications

Dear Mr. Rinebold,

I am writing to confirm our conversation on Friday, August 3, 2000 in regards to the status of the tower study that the University of Connecticut is currently conducting as it relates to the request from Nextel Communications to place equipment on the WHUS tower at the University.

First, let me update you on the current status of the University's commitment to the Siting Council that we will complete a study as to the feasibility of tower consolidation at the University. My understanding through correspondence from Assistant Attorney General Paul Shapiro dated July 31, 2000 is that a contract would be signed with RCC Consulting within "a day or so". This work will include a complete survey and recommendations for all towers, antennas, frequencies in use and support infrastructure related to the feasibility of consolidating on-campus facilities onto a single tower.

Consistent with the imminent start of this detailed consulting effort, the University has self-imposed a moratorium on new tenants and applications on the towers and facilities that we control. We believe it is prudent to have a known static environment for RCC to study and also that any future tenants may benefit from the knowledge of RCC's technical conclusions. (In their bid presentation, RCC indicated the study would take 3-4 months to complete.)



Siting Council – August 6, 2000 Pg 2

The University believes the moratorium is consistent with our prior agreements with the Siting Council in regards to tower consolidation. We believe the University, Nextel and the Siting Council's interests will be best served by waiting for the results of the study prior to allowing any new tenants into an already complex environment.

I hope this information assists you with immediate concerns. I will ask Assistant Attorney General Paul Shapiro to contact you shortly after he returns from vacation on August 14th. In the meantime, please do not hesitate to call me directly at 860-486-3962.

Sincerely,

A handwritten signature in blue ink, appearing to read "Robert P. Vietzke" with a stylized flourish at the end.

Robert P. Vietzke
Manager of Video Communications

CC: Paul Shapiro, Assistant Attorney General
Paul Kobulnicky, Vice Chancellor for Information Services

SNET Cellular, Inc.
555 Long Wharf Drive
Room 751
New Haven, Connecticut 06511
Phone (203) 553-7601



Donald R. Chapman
Vice President-Operations

December 10, 1990

RECEIVED

DEC 10 1990

CONNECTICUT
SITING COUNCIL

Honorable Gloria Dibble Pond, Chairperson
Connecticut Siting Council
136 Main Street, Suite 401
New Britain, Connecticut 06051

Re: Notice pursuant to Regulations of State Agencies 16-50j-73
intent to modify an exempt telecommunications tower and
associated equipment owned by The Southern New England
Telephone Company located on the University of Connecticut
campus in Mansfield (Storrs), Connecticut.

Dear Chairperson Pond:

As requested in your letter of acknowledgement dated June 20, we are
pleased to notify the Council of completion of construction at this
facility.

Very truly yours,

Donald R. Chapman



STATE OF CONNECTICUT

CONNECTICUT SITING COUNCIL

136 Main Street, Suite 401
New Britain, Connecticut 06051
Phone: 827-7682

Gloria Dibble Pond
Chairperson

COMMISSIONERS

Energy/Telecommunications

Peter G. Boucher
Leslie Carothers

Hazardous Waste/Low-level
Radioactive Waste

Frederick G. Adams
Bernard R. Sullivan

COUNCIL MEMBERS

Harry E. Covey
Mortimer A. Gelston
Daniel P. Lynch, Jr.
Paulann H. Sheets
William H. Smith
Colin C. Tait

Joel M. Rinebold
Executive Director

Stanley J. Modzelesky
Executive Assistant

June 20, 1990

Mr. Peter J. Tyrrell, Esq.
SNET Cellular, Inc.
227 Church Street
New Haven, CT 06510

RE: The Springwich Cellular Limited Partnership Notice of Intent to Modify an Exempt Tower and Associated Equipment Owned by the Southern New England Telephone Company located on the University of Connecticut Campus in Mansfield (Storrs), Connecticut.

Dear Attorney Tyrrell:

At a meeting held on June 18, 1990, the Connecticut Siting Council acknowledged your notice of intent to modify an exempt tower site and associated equipment owned by The Southern New England Telephone Company located on the University of Connecticut Campus in Mansfield (Storrs), Connecticut, pursuant to Section 16-50j-73 of the Regulations of State Agencies (RSA).

The proposed modifications are to be implemented as specified in your notices dated May 14 and June 4, 1990. As proposed, the modifications are in compliance with the exception criteria specified in RSA 16-50j-72 as changes to an existing facility site that do not increase the tower height, extend the boundaries of the tower site, increase noise levels at the tower site boundary 6 decibels, and add radio frequency sending or receiving capability which increases the total radio frequency electromagnetic radiation power density measured at the tower site boundary to or above the standard adopted by the State Department of Environmental Protection pursuant to Section 22a-162 of the Connecticut General Statutes.

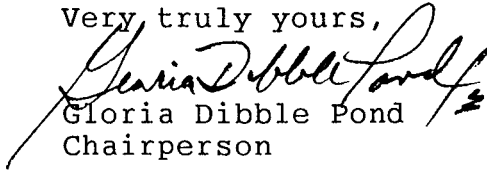
The Council is pleased to note that the shared use of an existing tower serves the Council's long-term goal of

Peter J. Tyrrell, Esq.
June 20, 1990
Page 2

protecting the public interest by avoiding proliferation
of additional tower structures.

Please notify the Council upon completion of construction.

Very truly yours,


Gloria Dibble Pond
Chairperson

GDP:JMR:bw



STATE OF CONNECTICUT

CONNECTICUT SITING COUNCIL

136 Main Street, Suite 401
New Britain, Connecticut 06051
Phone: 827-7682

June 5, 1990

TO: Gloria Dibble Pond
Chairperson
Commissioner Peter Boucher
Commissioner Leslie Carothers
Harry E. Covey
Mortimer A. Gelston
Daniel P. Lynch, Jr.
Paulann H. Sheets
William H. Smith
Colin C. Tait

FROM: Stanley J. Modzelesky, Executive Assistant

SJM

Enclosed please find material received from SNET, dated June 4, 1990. This item will be on the next agenda.

SJM/cp

Enclosure

cc: Robert A. Pulito
Mark Marcus
Brian Emerick

4497E

SNET Cellular, Inc.
555 Long Wharf Drive
Room 751
New Haven, Connecticut 06511
Phone (203) 553-7601



Donald R. Chapman
Vice President-Operations

June 4, 1990

RECEIVED

JUN - 4 1990

CONNECTICUT
SITING COUNCIL

Gloria Dibble Pond, Chairperson
Connecticut Siting Council
136 Main Street, Suite 401
New Britain, Connecticut 06051

Dear Chairperson Pond:

At the request of Council's staff, we are forwarding herewith a copy of the survey done of the existing SNET microwave tower location at the UConn campus that we propose to use for our cellular installation.

Sketched on the survey is the planned location of the required cellular equipment building and the fencing modifications required to surround this building. The construction is presently being designed by our engineering firm.

The existing tower was installed in 1967 to provide private television services from the main campus to other branch campuses. The location was agreed upon by the officials of SNET and UConn at that time.

The University of Connecticut has requested that we construct a cell site in order to provide improved cellular service to their emergency call boxes installed at various remote locations throughout the campus, and has approved this location.

Very truly yours,

A handwritten signature in blue ink that reads "Donald R. Chapman".

Southern New England Telephone
227 Church Street
New Haven, Connecticut 06510
Phone (203) 771-7381



Peter J. Tyrrell
Senior Attorney

May 14, 1990

RECEIVED

MAY 15 1990

CONNECTICUT
SITING COUNCIL

Gloria Dibble Pond, Chairperson
Connecticut Siting Council
136 Main Street Suite 401
New Britain, Ct. 06051

Dear Honorable Chairperson Pond:

Enclosed please find a Notice of Intent to Modify an Exempt Tower and Associated Equipment owned by the Southern New England Telephone Company located on the University of Connecticut Campus in Mansfield (Storrs), Connecticut by the Springwich Cellular Limited Partnership (the Partnership). Twenty (20) copies are included.

Please record my name as counsel for SNET Cellular, Inc. (General Partner of the Partnership) in the matter and in correspondence from the Council.

Thank you for your kind cooperation.

Very truly yours,

A handwritten signature in cursive script that reads "Peter J. Tyrrell".

Enclosures

cc: Honorable Martin H. Berliner, Town Manager,
Town of Mansfield

Ms. Susan J. Fisher, Director of Telecommunications
and Business Services, University of Connecticut

ORIGINAL

RECEIVED

MAY 15 1990

STATE OF CONNECTICUT
SITING COUNCIL

CONNECTICUT
SITING COUNCIL

NOTICE OF INTENT TO MODIFY AN EXEMPT TOWER
AND ASSOCIATED EQUIPMENT

Pursuant to Section 16-50i(a)(5) of the Connecticut General Statutes and pursuant to Section 16-50j-73 of the Regulations of Connecticut State Agencies, the Springwich Cellular Limited Partnership (the Partnership), a company which provides cellular radio telecommunications service in the State of Connecticut, hereby notifies the Connecticut Siting Council that it intends to modify an existing telecommunications tower. The site is located at the University of Connecticut ("UCONN") Campus, Storrs, Connecticut. The location will be leased in part from its current owner and operator, The Southern New England Telephone Company (Owner), and will be used in part as a cell site to provide cellular mobile telecommunications and message alert services in Tolland County. The proposed tower modification would contain both transmit and receive antennas. A small equipment building will also be required for which we will obtain all necessary local approvals.

DISCUSSION

The tower is located on the on the UCONN Campus, in Storrs, Connecticut. The proposed addition is needed to supply cellular service to the Campus area by the Partnership. This cell site has been designed to properly interface with the adjacent cell sites in Tolland and Glastonbury

The proposed antenna addition consists of up to eight (8) antennas. The antennas to be used will be mounted the top of the existing 80 foot self-supporting telecommunications tower. From the ground the antennas will appear smaller and be difficult to see. The existing tower has a single microwave parabolic antenna used to provide cable television service from the UCONN Campus to other branch campuses. The maximum power density of the cellular facility is set forth below. It has been calculated in milliwatts per square centimeter.

<u>Location</u>	<u>Power Density</u> ^a (proposed)
Tower Base	0.4179
Fence	0.3964
Nearest Building ^b	0.4123

This addition does not increase the total power density measured at the tower site boundary to or above 2.933 milliwatts/sq cm.

In 1984 the Connecticut Legislature adopted the safety levels of the American National Standards Institute ("ANSI") in CGS Section 22a-162. The current ANSI power density level standard (for the cellular service band) for non-ionizing radiation is 2.933 milliwatts/sqcm (See ANSI Standard C95.1-1982). In this case, the cellular power density figures are more than seven times less than the applicable standard.

a The levels shown indicated the total power density in milliwatts per sq. cm. from all cellular and message alert antennas measured simultaneously.

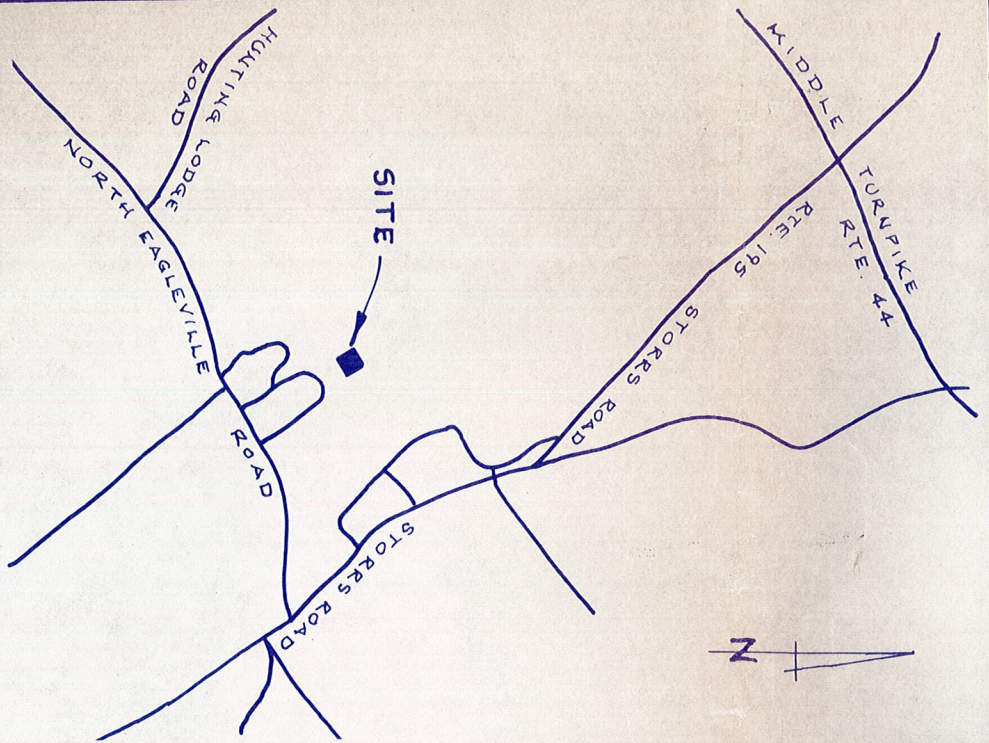
b The nearest building is the Owner's microwave equipment building.

The proposed addition does not constitute a "Modification" of an existing facility as defined in Connecticut General Statutes, Section 16-50i(d). This is because there is no change in the tower's height. There will be no increase in noise levels at the tower's boundary by six decibels or more. The total radio frequency electromagnetic radiation power density is below the State standard. This addition will not have a substantially adverse environmental effect pursuant to Connecticut General Statutes, Section 16-50J-72(b)(2). For the reasons discussed above, the Partnership requests the Council to acknowledge that the Notice of modification meets the Council's exemption criteria.

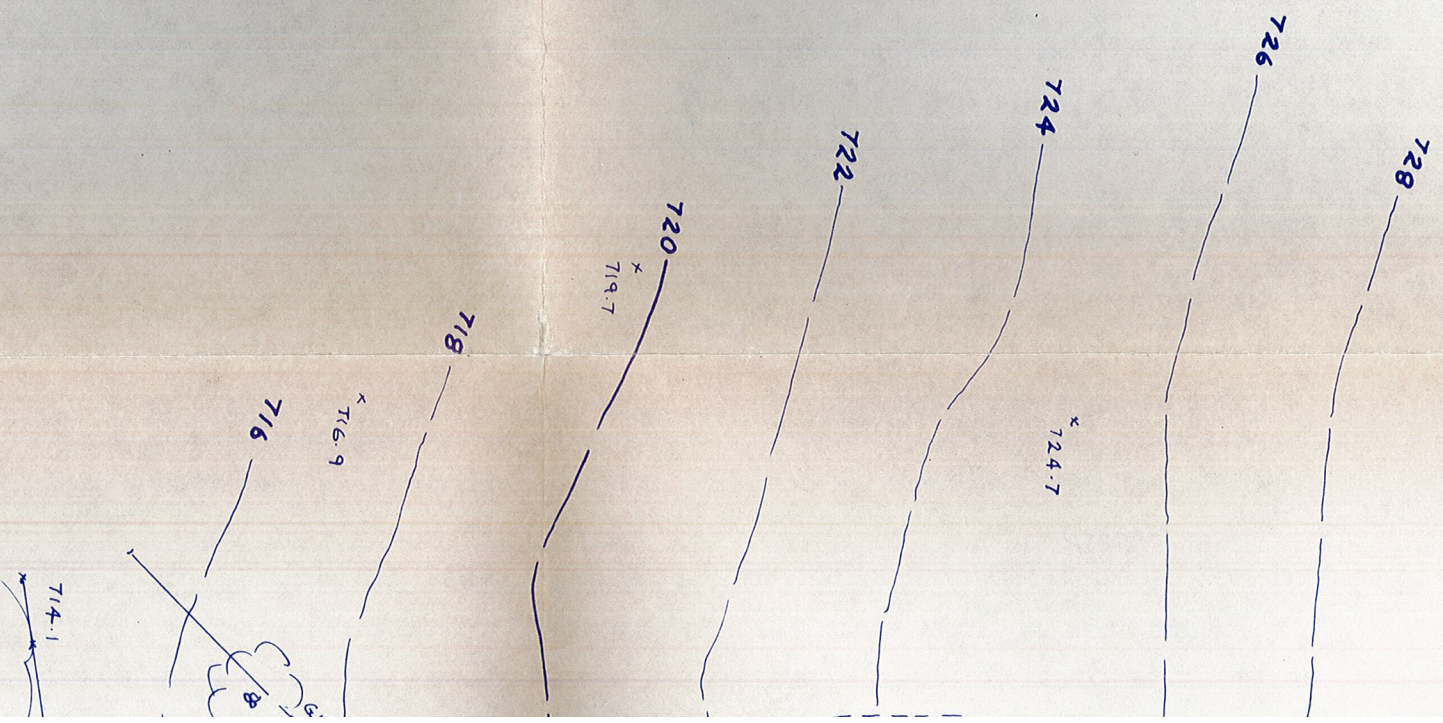
Sincerely,

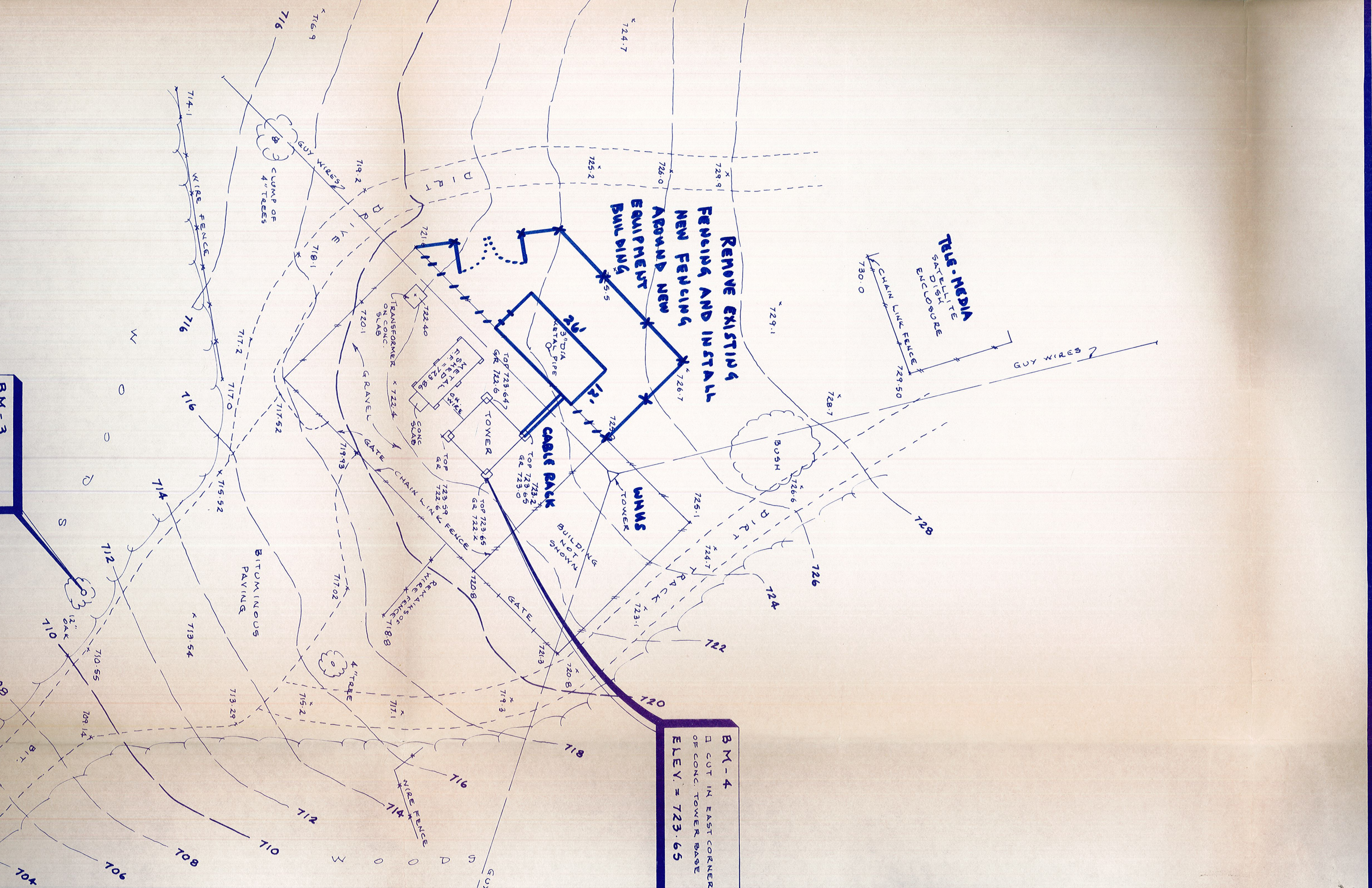
A handwritten signature in cursive script that reads "Peter J. Tyrrell". The signature is written in dark ink and is positioned above the typed name.

Peter J. Tyrrell



LOCATION MAP SCALE 1" = 2000'



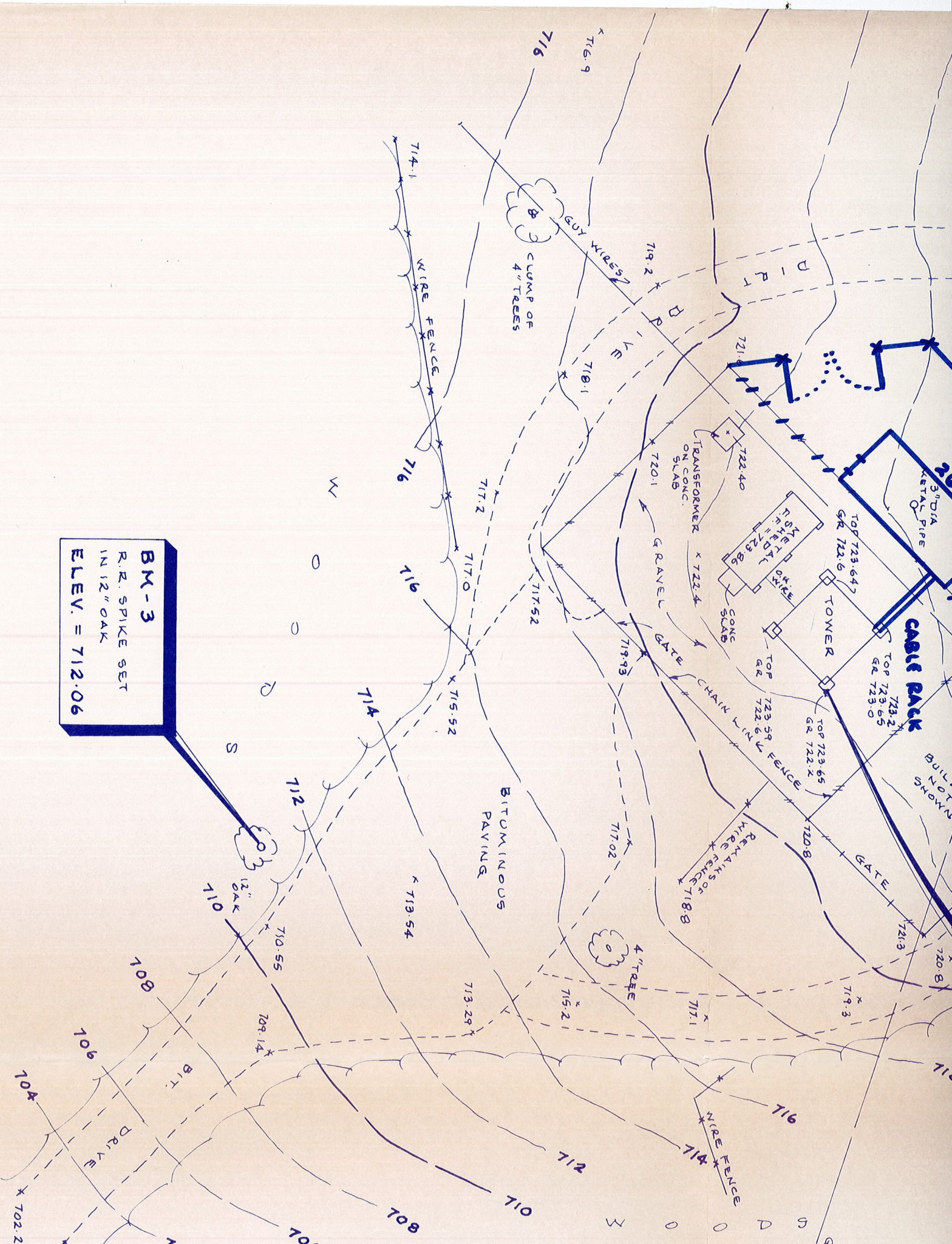


REMOVE EXISTING FENCING AND INSTALL NEW FENCING AROUND NEW EQUIPMENT BUILDING

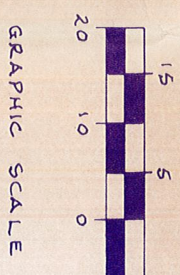
TELE-MEDIA SATELLITE ENCLOSEURE

BM - 4
 □ CUT IN EAST CORNER OF CONC. TOWER BASE
 ELEV. = 723.65

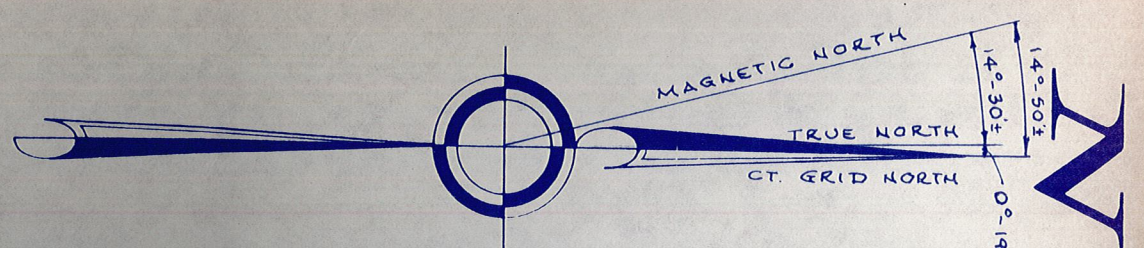
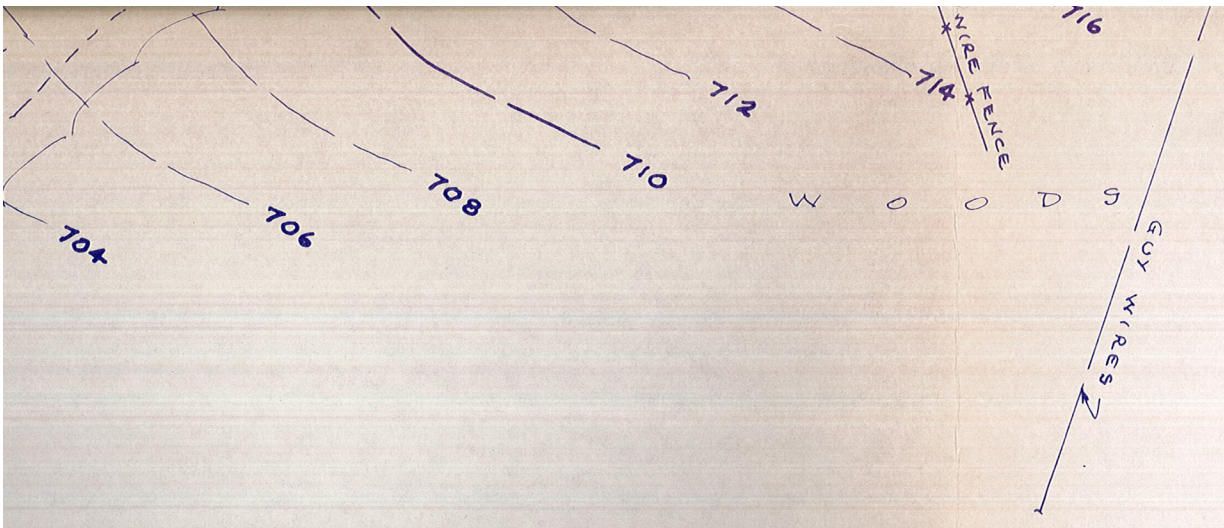
BM - 3



BM-3
R.R. SPIKE SET
IN 12" OAK
ELEV. = 712.06



4
 TIN EAST CORNER
 TOWER BASE
 V. = 723.65



NOTES:

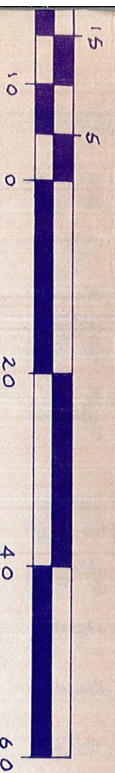
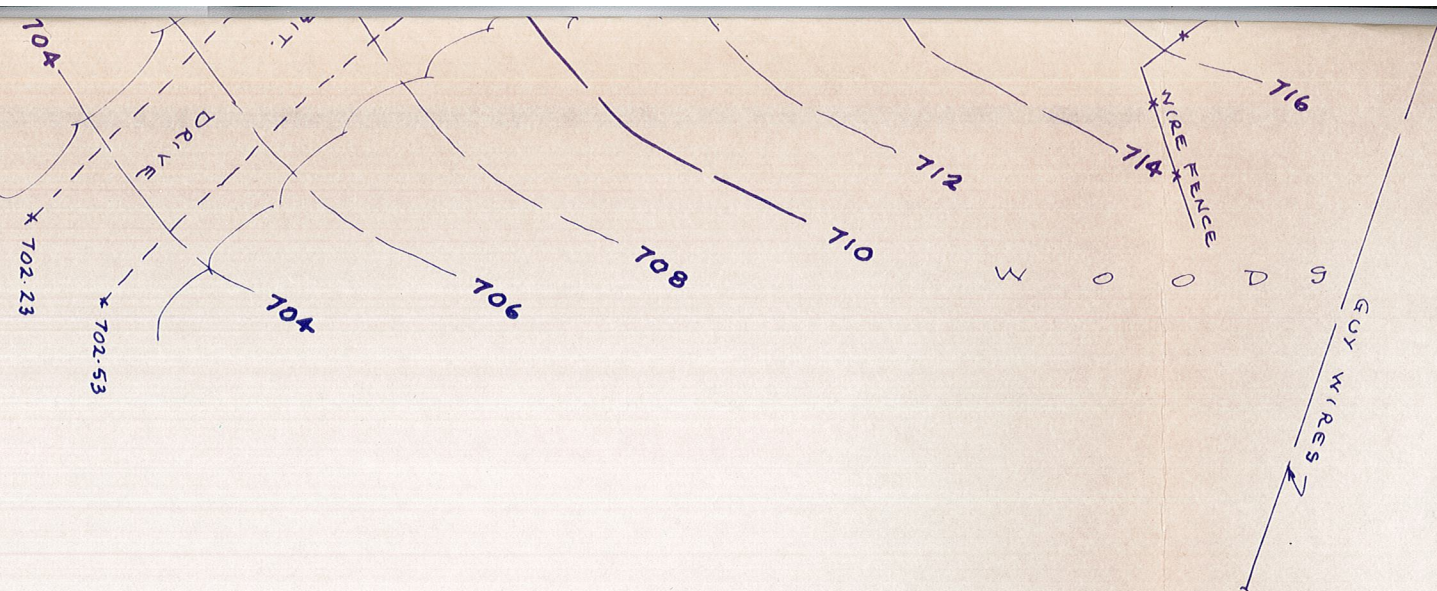
- 1) NORTH ARROW REFERS TO THE CONNECTICUT COORDINATE SYSTEM BASED UPON CGS STATIONS "STORRS" AND #34. FOLLOWING VALUES:

"STORRS"	$\overline{N357,963.48}$	#3470	$\overline{N357,673,888}$
	E733,678.88		E733,888
- 2) ELEVATIONS REFER TO THE NATIONAL GEODETIC VELOCITY DATUM 1929 BASED UPON CGS STATION BM 2984 USING A 613.83.

STATION CGS STATIONS "STORRS" AND
FOLLOWING VALUES:

"STORRS" N357,963.48 #3470 N3
E733,678.88 E7

2) ELEVATIONS REFER TO THE NATIONAL GEODETIC
1929 BASED UPON CGS STATION BM 2984 USI
613.83.



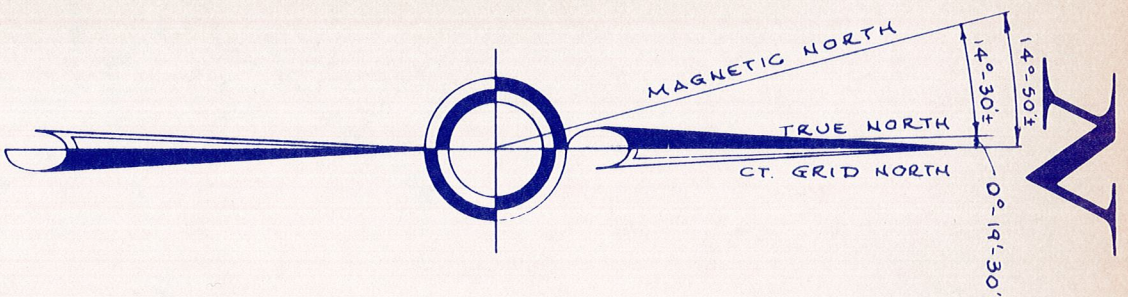
GRAPHIC SCALE

I HEREBY CERTIFY THAT THIS MAP AND SURVEY ARE SUBSTANTIALLY
CORRECT AND WERE PREPARED IN ACCORDANCE WITH THE STANDARDS
OF A CLASS A-2 SURVEY AS DEFINED IN THE CODE OF PRACTICE
FOR THE STANDARDS OF ACCURACY OF SURVEYS AND MAPS ADOPTED
DECEMBER 10, 1975 AS AMENDED BY THE CONNECTICUT ASSOCIATION
OF LAND SURVEYORS, INC.

MICHAEL G. WILMES

L.S. NO. 14206

NO CERTIFICATION IS EXPRESSED OR IMPLIED UNLESS THIS MAP BEARS
THE ORIGINAL SIGNATURE AND EMBOSSED SEAL OF THE ABOVE NAMED
LAND SURVEYOR.



RIGHT ARROW REFERS TO THE CONNECTICUT COORDINATE SYSTEM
 BASED UPON CGS STATIONS "STORRS" AND #3470 HAVING THE
 FOLLOWING VALUES:

STORRS" <u>N357,963.48</u>	#3470	<u>N357,699.04</u>
E733,678.88		E733,891.58

LEVATIONS REFER TO THE NATIONAL GEODETIC VERTICAL DATUM OF
 1929 BASED UPON CGS STATION BM 2984 USING AN ELEVATION OF
 13.83.

STORRS" N357,963.48
E733,678.88

#3470 N357,699.04
E733,891.58

ELEVATIONS REFER TO THE NATIONAL GEODETIC VERTICAL DATUM OF
1929 BASED UPON CGS STATION BM 2984 USING AN ELEVATION OF
13.83.

THIS MAP AND SURVEY ARE SUBSTANTIALLY
MADE IN ACCORDANCE WITH THE STANDARDS
AND SPECIFICATIONS AS DEFINED IN THE CODE OF PRACTICE
FOR SURVEYS AND MAPS ADOPTED
AND RECOMMENDED BY THE CONNECTICUT ASSOCIATION

L.S. NO. 14206

EMBOSS OR IMPLIED UNLESS THIS MAP BEARS
AN EMBOSSED SEAL OF THE ABOVE NAMED

Greiner					SURVEYING & MAPPING	
WALLINGFORD, CONNECTICUT						
SCALE 1" = 20' DATE MAY, 1990 JOB NO FO18842 REF. —						
FB 1318 Pg 60						
DRAWN BY	OFFICE	COMPUTED	MAP CHECK	CREW CHIEF		
KJM	KJM	KJM	—	A. F.		

T131-9

720
x
719.7

718

TOPOGRAPHIC SURVEY
PREPARED FOR
SNET CELLULAR, INC.
OFF NORTH EAGLEVILLE ROAD
STORRS, CONNECTICUT

BSTANTTALLY
STANDARDS
OF PRACTICE
S ADOPTED
ASSOCIATION

14206

MAP BEARS
BOVE NAMED

T 131-9