

May 6, 2016

Melanie A. Bachman
Acting Executive Director
Connecticut Siting Council
10 Franklin Square
New Britain, CT 06051

Re: **TS-VER-077-140911 – Cellco Partnership d/b/a Verizon Wireless
Request for an Order to Approve Tower Sharing at an Existing
Telecommunications Facility at 239 Middle Turnpike East, Manchester,
Connecticut**

Dear Ms. Bachman:

On October 2, 2014, the Siting Council approved the above-referenced tower share application of Cellco Partnership d/b/a Verizon Wireless (“Cellco”). On October 5, 2015, the Council granted a request for extension of the tower share approval until October 3, 2016.

For the last several months, Cellco has been working with the Town of Manchester Police Department (“MPD”) regarding the installation of its approved antennas and wireless facility equipment at the MPD parcel. The MPD has recently installed a new generator at the site, which, in turn, requires Cellco to relocate a portion of its antenna cable ice bridge. In addition, Cellco also intends to eliminate its shelter and install its equipment and back-up generator on a steel platform beneath a metal canopy roof.

Attached is a revised set of project plans highlighting, on plan Sheet C-2, the changes to Cellco’s installation. Cellco anticipates to commence construction of its facility on or about June 1, 2016. In accordance with the Council’s approval we will notify the Council as soon as construction activities have been completed.

Melanie A. Bachman

May 6, 2016

Page 2

Thank you for your continued cooperation. Please contact me if you have any questions or need any additional information regarding these plan revisions.

Sincerely,

A handwritten signature in blue ink, appearing to read 'Kenneth C. Baldwin', is written over a light blue horizontal line.

Kenneth C. Baldwin

KCB/kmd

Attachment

Copy to:

John Tierney

Stephen Schadler

Jay Moran, Mayor, Town of Manchester

Scott Shanley, General Manager, Town of Manchester

James White, Manchester Police Department

Cellco Partnership

d.b.a. **verizon** wireless

WIRELESS COMMUNICATIONS FACILITY

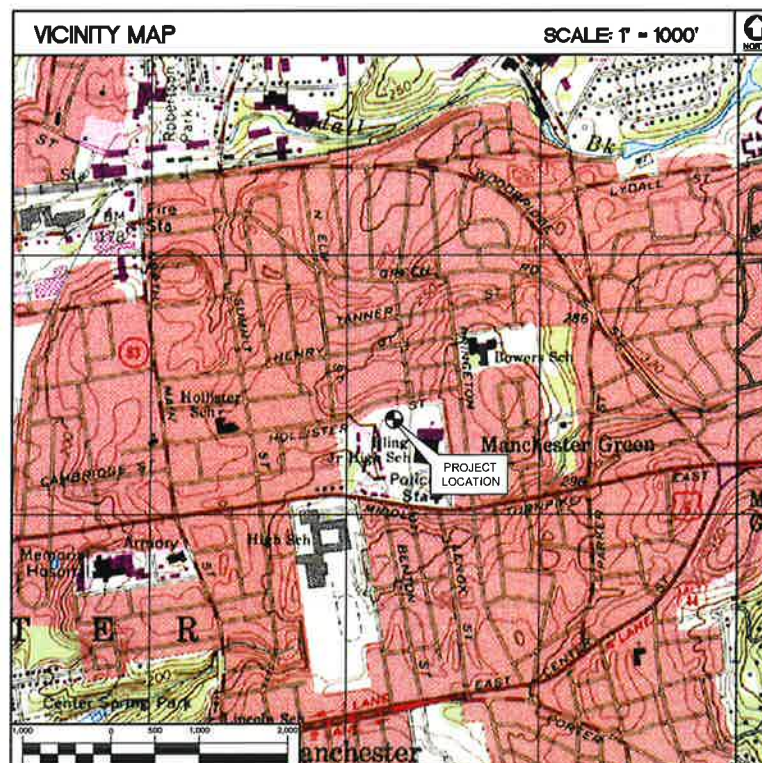
MANCHESTER GREEN

239 MIDDLE TURNPIKE EAST MANCHESTER, CT 06040

SITE DIRECTIONS	
FROM: 99 EAST RIVER DRIVE EAST HARTFORD, CONNECTICUT	TO: 239 MIDDLE TURNPIKE EAST MANCHESTER, CT 06040
1. Head northeast on E River Dr	0.9 mi
2. Merge left onto I-84 E toward CT-2 E/Norwich	3.5 mi
3. Keep left to take 1-84 toward Boston	1.4 mi
4. Take US-6 exit 60 toward Manchester	0.4 mi
5. Turn right onto Middle Tpke W. Continue to follow Middle Tpke W	0.5 mi
6. Turn right to stay on Middle Tpke W.	2.5 mi
7. Turn left (Just past Branford St.)	1.0 mi



GENERAL NOTES
1. PROPOSED ANTENNA LOCATIONS AND HEIGHTS PROVIDED BY CELCO PARTNERSHIP.

PROJECT SCOPE
1. THE PROPOSED SCOPE OF WORK GENERALLY INCLUDES THE INSTALLATION OF A NATURAL GAS FUELED EMERGENCY POWER BACKUP GENERATOR TO BE LOCATED ON A PROPOSED EQUIPMENT PLATFORM WITH ASSOCIATED WIRELESS COMMUNICATIONS EQUIPMENT.
2. REMOVAL OF PORTION OF EXISTING FENCE AND GATE. TO INSTALL A PROPOSED 8' TALL CHAINLINK FENCE WITH PRIVACY SLATS AROUND PROPOSED EQUIPMENT PLATFORM.
3. A TOTAL OF TWELVE (12) DIRECTIONAL PANEL ANTENNAS ARE PROPOSED TO BE MOUNTED ON THE EXISTING MONOPOLE TOWER AT A CENTERLINE ELEVATION OF 113' A.G.L.
4. ELECTRIC AND TELCO UTILITIES SHALL BE ROUTED UNDERGROUND TO THE PROPOSED EQUIPMENT FROM EXISTING UTILITY DEMARCS LOCATED ADJACENT TO THE EXISTING FENCED COMPOUND.
5. THE PROPOSED WIRELESS FACILITY INSTALLATION WILL BE DESIGNED IN ACCORDANCE WITH THE 2003 INTERNATIONAL BUILDING CODE AS MODIFIED BY THE 2009 CONNECTICUT SUPPLEMENT.



PROJECT SUMMARY	
SITE NAME:	MANCHESTER GREEN
SITE ADDRESS:	239 MIDDLE TURNPIKE EAST MANCHESTER, CT 06040
PROPERTY OWNER:	TOWN OF MANCHESTER 41 CENTER ST MANCHESTER, CT 06040-5096
LESSEE/TENANT:	CELLCO PARTNERSHIP d.b.a. VERIZON WIRELESS 99 EAST RIVER DRIVE EAST HARTFORD, CT 06108
VERIZON SITE ACQUISITION CONTACT:	STEVE SCHADLER CELLCO PARTNERSHIP (508) 887-0357
LEGAL/REGULATORY COUNSEL:	KENNETH C. BALDWIN, ESQ. ROBINSON & COLE LLP (860) 275-8345
TOWER COORDINATES:	LATITUDE: 41°-47'-04"N LONGITUDE: 72°-30'-42"W GROUND ELEVATION: ±305' AMSL COORDINATES & GROUND ELEVATION ARE REFERENCED FROM THE CSC DATABASE.

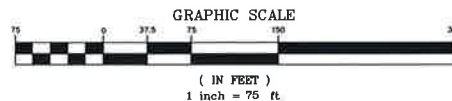
SHEET INDEX		
SHT. NO.	DESCRIPTION	REV. NO.
T-1	TITLE SHEET	1
C-1	ABUTTERS MAP	1
C-2	PARTIAL SITE PLAN, ELEVATION AND ANTENNA CONFIG.	1

PROFESSIONAL ENGINEER SEAL				
 Cellco Partnership d.b.a. verizon wireless				
 CENTEK engineering 63 North Branford Road Branford, CT 06400 (203) 488-0580 (203) 488-6587 Fax www.CentekEng.com				
Cellco Partnership d/b/a Verizon Wireless WIRELESS COMMUNICATIONS FACILITY MANCHESTER GREEN 239 MIDDLE TURNPIKE EAST MANCHESTER, CT 06040				
DATE:	04/19/16			
SCALE:	AS NOTED			
JOB NO.	15279.000			
TITLE SHEET				
<h1>T-1</h1> Sheet No. 1 of 3				
REV.	DATE	DRAWN BY	CHK'D BY	DESCRIPTION
1	04/05/16	DMD	DFC	ISSUED FOR CSC
0	04/27/16	KAWAR	DMD	ISSUED FOR CSC - CLIENT REVIEW



MUNICIPALITY NOTIFICATION LIMIT MAP

1 ABUTTERS MAP
C-1 SCALE: 1" = 75'

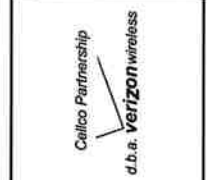


MAP REFERENCE NOTE:

PROPERTY LINES AND PROPERTY OWNERSHIP INFORMATION SHOWN HEREIN ARE REFERENCED FROM THE TOWN OF MANCHESTER ON-LINE ASSESSORS MAPPING AND ASSESSORS DATABASE.

REV.	DATE	BY	CHK'D BY	DESCRIPTION
0	04/19/16	KAM/SE	DMD	ISSUED FOR CSO - CLIENT REVIEW

PROFESSIONAL ENGINEER SEAL



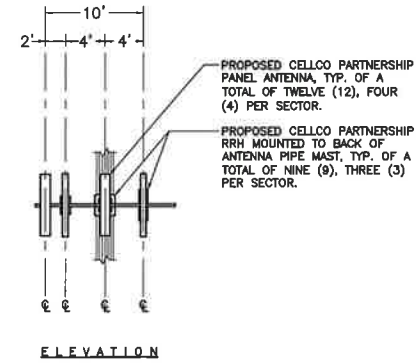
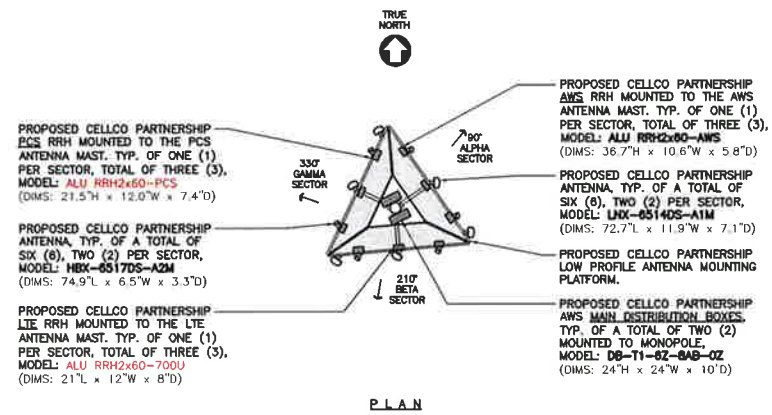
CENITEK engineering
Centitek Solutions
(203) 488-0580
(203) 488-9587 fax
63-2 North Stonia Road
Branford, CT 06405
www.CentitekEng.com

Cellco Partnership d/b/a Verizon Wireless
WIRELESS COMMUNICATIONS FACILITY
MANCHESTER GREEN
239 MIDDLE TURNPIKE EAST
MANCHESTER, CT 06040

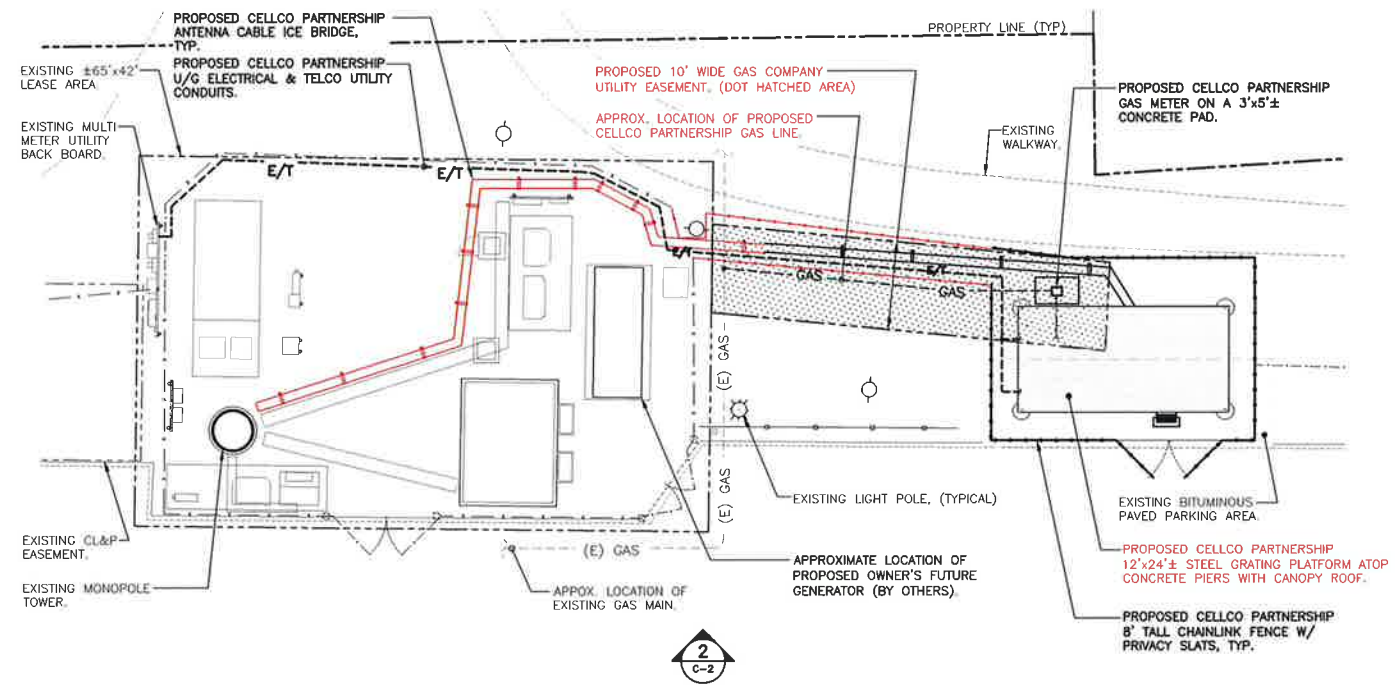
DATE: 04/19/16
SCALE: AS NOTED
JOB NO. 15279.000

ABUTTERS MAP

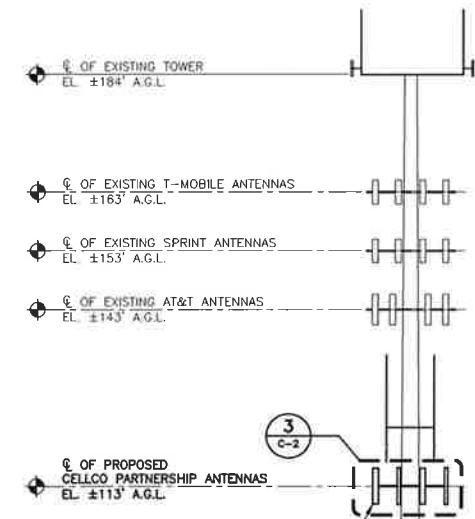
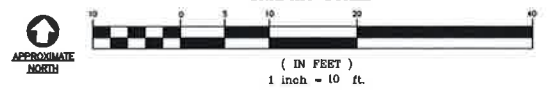
C-1
Sheet No. 2 of 3



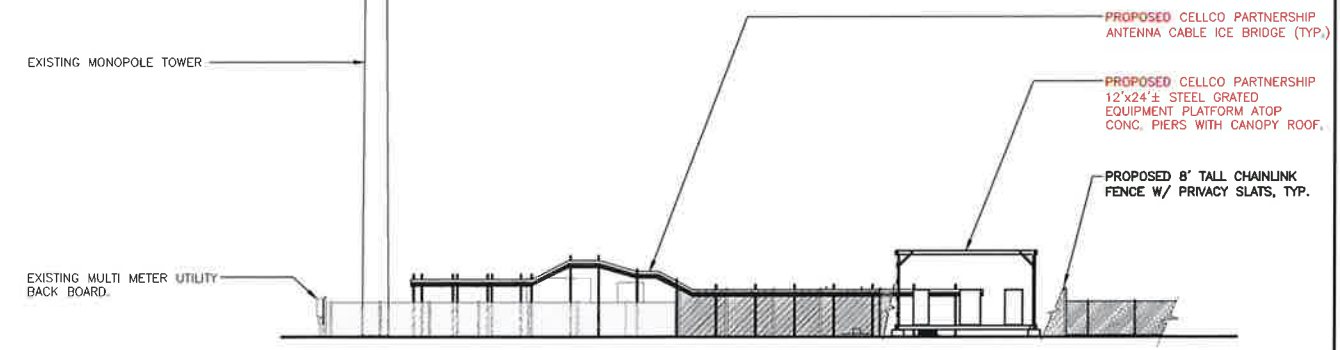
3 ANTENNA MOUNTING CONFIGURATION
C-2 NOT TO SCALE



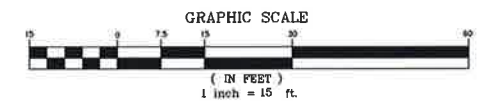
1 PARTIAL SITE PLAN
C-2 SCALE: 1" = 10'



TOWER NOTES:
1. REFER TO STRUCTURAL ANALYSIS REPORT PREPARED FOR VERIZON WIRELESS BY HUDSON DESIGN GROUP LLC DATED APRIL 19, 2016, FOR ADDITIONAL INFORMATION AND REQUIREMENTS.



2 SOUTH ELEVATION
C-2 SCALE: 1" = 15'



REV.	DATE	BY	CHKD BY	DESCRIPTION
1	05/05/16	DMD	CSC	ISSUED FOR CSC
0	04/27/16	WAB	DMD	ISSUED FOR CSC - CLIENT REVIEW

PROFESSIONAL ENGINEER SEAL

Cellico Partnership
d.b.a. Verizon Wireless

CENTEK engineering
Center on Solutions
(203) 488-0580
(203) 488-8587 Fax
632 North Branford Road
Branford, CT 06405
www.CentekEng.com

Cellico Partnership d/b/a Verizon Wireless
WIRELESS COMMUNICATIONS FACILITY
MANCHESTER GREEN
289 MIDDLE TURNPIKE EAST
MANCHESTER, CT 06040

DATE: 04/19/16
SCALE: AS NOTED
JOB NO. 15279.000

PARTIAL SITE PLAN,
ELEVATION &
ANTENNA CONFIG.

C-2
Sheet No. 3 of 3