



December 17, 2024

Melanie A. Bachman
Acting Executive Director
Connecticut Siting Council
10 Franklin Square
New Britain, CT 06051

RE: EM-VER-076-231109 - Cellco Partnership d/b/a Verizon Wireless, 8 Old Route 79, Madison, Connecticut.

Notice of Construction Complete

Dear Ms. Bachman:

The purpose of this letter is to notify the Siting Council that construction activity associated with the above-referenced facility modifications has been completed.

If you have any questions or need any additional information regarding this facility, please do not hesitate to contact me.

Sincerely,

A handwritten signature in black ink that reads "Barbara Kassabian". The signature is written in a cursive style.

Barbara Kassabian

Barbara Kassabian
c/o Cellco Partnership d/b/a Verizon Wireless
Centerline Communications, LLC
750 West Center Street, Suite 301
West Bridgewater, MA 02379
Mobile: (603) 303-8001
bkassabian@clinellc.com

750 W Center St, Suite 301
West Bridgewater, MA 02379
781-713-4725

December 12, 2024

Mr. Vincent Garofalo
Town of Madison Building Department
8 Campus Drive
Madison, CT 06443

Re: Letter of Professional Opinion

Project: Madison 2 CT (Verizon)
8 Old 79
Madison, CT 06443

Owner: American Tower

Engineer: ATC Tower Services, LLC.
3500 Regency Pkwy, Suite 100, Cary, NC 27518

Contractor: NEC Group
21 Marion Drive, Kingston, MA 02364

Centek Project No.: 24140.40

Building Permit No.: NA

Dear Mr. Garofalo,

We are providing this "Letter of Professional Opinion" with regard to the structural components at the above referenced project.

The following are the basis for substantiating compliance with construction documents prepared by A.T. Engineering Services, LLC dated 10/17/2023 Rev. 0 and Mount Analysis Report prepared by Colliers Engineering & Design dated 07/24/2024:

- Field observations of completed construction on 12/10/2024.

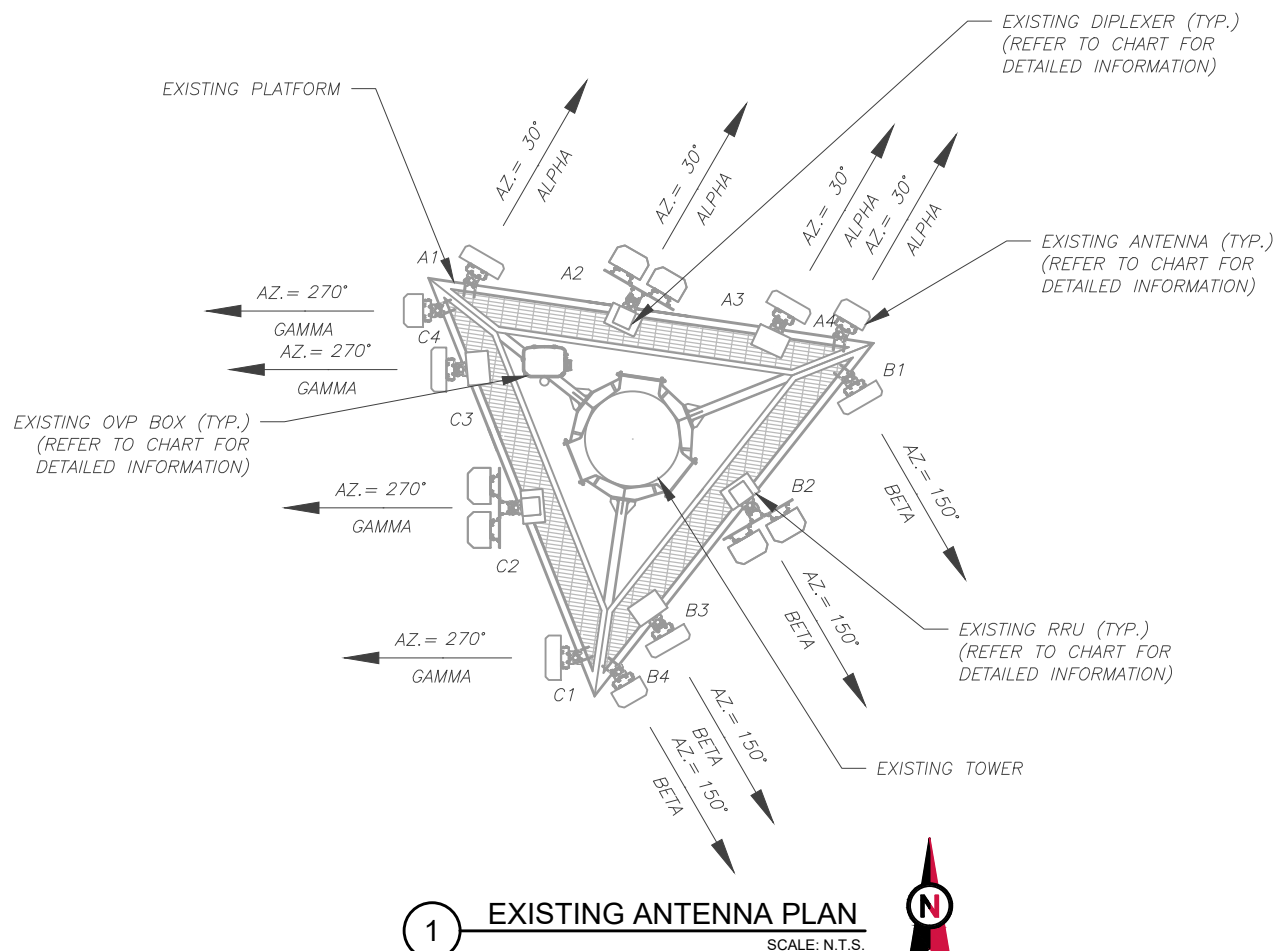
Please be aware that discrepancies have been identified between the equipment listed in the Structural Analysis Report prepared by American Tower Corporation (dated 09/19/2023) and the reports referenced above. Specifically, equipment shown in the construction documents and Mount Analysis report was not included in the structural analysis. These discrepancies have been highlighted in red on the attached pages: page 5 of the construction documents, page 3 of the Mount Analysis, and page 5 of the Structural Analysis.

The work under this Contract has been reviewed and found, to the Engineer's best knowledge, information, and belief, to be completed in general compliance with the documents prepared by the aforementioned offices.

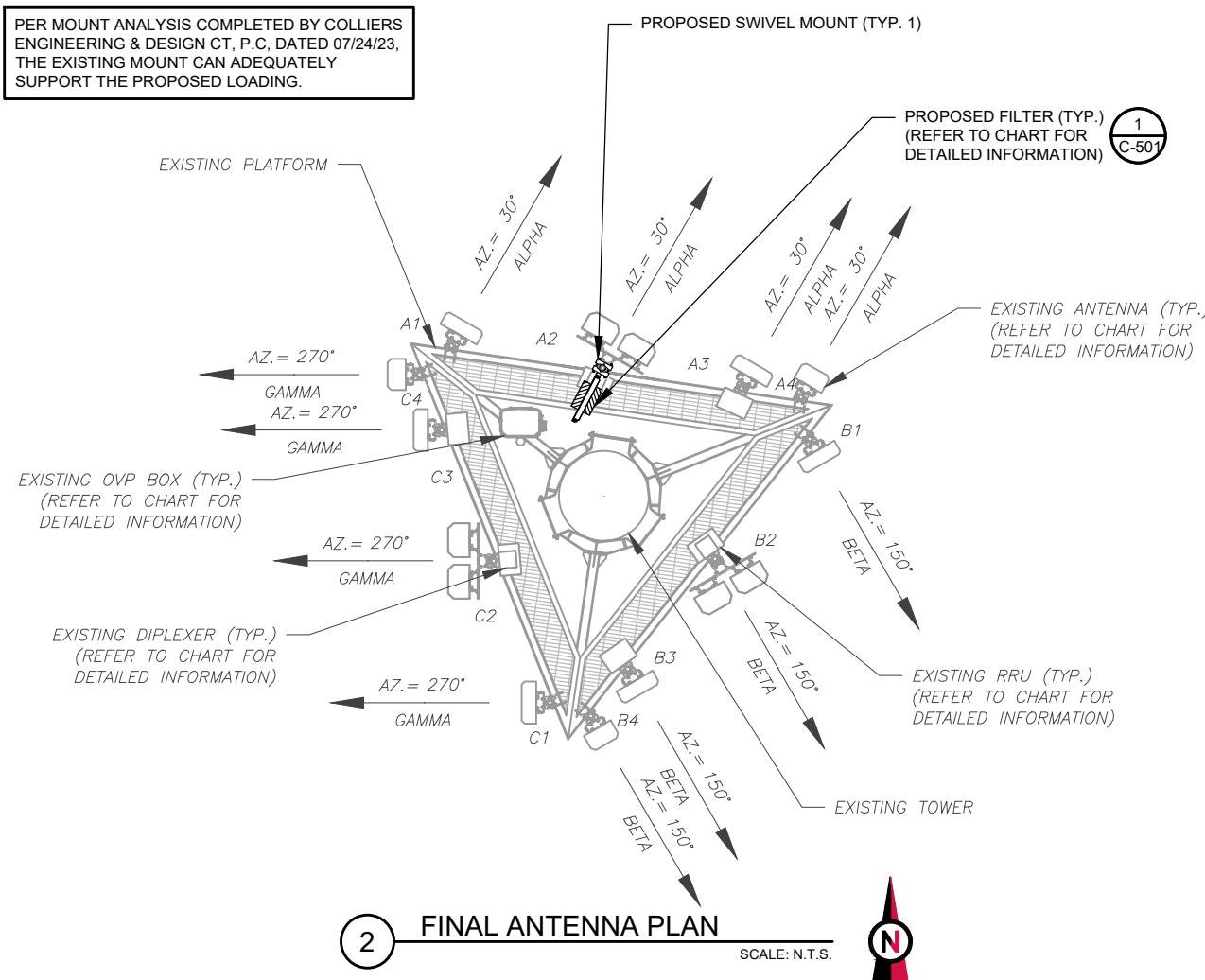
Sincerely,

Carlo F. Centore, PE
Principal





PER MOUNT ANALYSIS COMPLETED BY COLLIERS ENGINEERING & DESIGN CT, P.C. DATED 07/24/23, THE EXISTING MOUNT CAN ADEQUATELY SUPPORT THE PROPOSED LOADING.



EXISTING ANTENNA SCHEDULE								
LOCATION			ANTENNA SUMMARY				NON ANTENNA SUMMARY	
SECTOR	RAD	AZ	POS	ANTENNA	BAND	STATUS	ADDITIONAL TOWER MOUNTED EQUIPMENT	STATUS
ALPHA	140'	30°	A1	XXDWMM-12.5-65-8T-CBRS	-	RMN	-	-
			A2	(2) JAHH-65B-R3B	-	RMN	B2/B66A RRH-BR049 CBC78T-DS-43-2X	RMN RMN
			A3	MT6407-77A	-	RMN	B5/B13 RRH-BR04C	RMN
			A4	LNx-8513DS-A1M	-	RMN	-	-
BETA	140'	150°	B1	XXDWMM-12.5-65-8T-CBRS	-	RMN	-	-
			B2	(2) JAHH-65B-R3B	-	RMN	B2/B66A RRH-BR049 CBC78T-DS-43-2X	RMN RMN
			B3	MT6407-77A	-	RMN	B5/B13 RRH-BR04C	RMN
			B4	LNx-8513DS-A1M	-	RMN	-	-
GAMMA	140'	270°	C1	XXDWMM-12.5-65-8T-CBRS	-	RMN	-	-
			C2	(2) JAHH-65B-R3B	-	RMN	B2/B66A RRH-BR049 CBC78T-DS-43-2X	RMN RMN
			C3	MT6407-77A	-	RMN	B5/B13 RRH-BR04C	RMN
			C4	LNx-6514DS-A1M	-	RMN	-	-

NOTES

- CONFIRM WITH VERIZON REP FOR APPLICABLE UPDATES/REVISIONS AND MOST RECENT RFDS FOR NSN CONFIGURATION (CONFIG). GC TO CAP ALL UNUSED PORTS.
- CONFIRM SPACING OF PROPOSED EQUIP DOES NOT CAUSE TOWER CONFLICTS NOR IMPEDE TOWER CLIMBING PEGS.

STATUS ABBREVIATIONS

RMV: TO BE REMOVED
RMN: TO REMAIN
REL: TO BE RELOCATED
ADD: TO BE ADDED

CABLE LENGTHS FOR JUMPERS

JUNCTION BOX TO RRU: 15'
RRU TO ANTENNA: 10'

FINAL ANTENNA SCHEDULE								
LOCATION			ANTENNA SUMMARY				NON ANTENNA SUMMARY	
SECTOR	RAD	AZ	POS	ANTENNA	BAND	STATUS	ADDITIONAL TOWER MOUNTED EQUIPMENT	STATUS
ALPHA	140'	30°	A1	XXDWMM-12.5-65-8T-CBRS	-	RMN	-	-
			A2	(2) JAHH-65B-R3B	-	RMN	(2) KA-6030 B2/B66A RRH-BR049 CBC78T-DS-43-2X	ADD RMN RMN
			A3	MT6407-77A	-	RMN	B5/B13 RRH-BR04C	RMN
			A4	LNx-8513DS-A1M	-	RMN	-	-
BETA	140'	150°	B1	XXDWMM-12.5-65-8T-CBRS	-	RMN	-	-
			B2	(2) JAHH-65B-R3B	-	RMN	B2/B66A RRH-BR049 CBC78T-DS-43-2X	RMN RMN
			B3	MT6407-77A	-	RMN	B5/B13 RRH-BR04C	RMN
			B4	LNx-8513DS-A1M	-	RMN	-	-
GAMMA	140'	270°	C1	XXDWMM-12.5-65-8T-CBRS	-	RMN	-	-
			C2	(2) JAHH-65B-R3B	-	RMN	B2/B66A RRH-BR049 CBC78T-DS-43-2X	RMN RMN
			C3	MT6407-77A	-	RMN	B5/B13 RRH-BR04C	RMN
			C4	LNx-6514DS-A1M	-	RMN	-	-

EXISTING FIBER DISTRIBUTION/OVP BOX		EXISTING CABLING SUMMARY	
MODEL NUMBER	STATUS	CABLE QTY, SIZE, TYPE	STATUS
DB-C1-12C-24AB-0Z	RMN	(10) 1-5/8" COAX AND (2) 1-1/4" HYBRIFLEX	RMN
-	RMV	----	RMV

3 EQUIPMENT SCHEDULES

FINAL FIBER DISTRIBUTION / OVP BOX		FINAL CABLING SUMMARY	
MODEL NUMBER	STATUS	CABLE QTY, SIZE, TYPE	STATUS
DB-C1-12C-24AB-0Z	RMN	(10) 1-5/8" COAX AND (2) 1-1/4" HYBRIFLEX	RMN
-	ADD	----	ADD

AMERICAN TOWER®
A.T. ENGINEERING SERVICES LLC
3500 REGENCY PARKWAY
SUITE 100
CARY, NC 27518
PHONE: (919) 468-0112
PEC.0001553

THE USE AND PUBLICATION OF THESE DRAWINGS SHALL BE RESTRICTED TO THE ORIGINAL SITE FOR WHICH THEY ARE PREPARED. ANY USE OR DISCLOSURE OTHER THAN THAT WHICH RELATES TO AMERICAN TOWER OR THE SPECIFIED CARRIER IS STRICTLY PROHIBITED. NEITHER THE ARCHITECT NOR THE ENGINEER WILL BE PROVIDING ON-SITE CONSTRUCTION REVIEW OF THIS PROJECT. CONTRACTOR(S) MUST VERIFY ALL DIMENSIONS AND ADVISE AMERICAN TOWER OR THE SPECIFIED CARRIER OF ANY DISCREPANCIES. ANY PRIOR ISSUANCE OF THIS DRAWING IS SUPERSEDED BY THE LATEST VERSION.

REV.	DESCRIPTION	BY	DATE
0	FOR CONSTRUCTION	LLR	10/17/2023

ATC SITE NUMBER:
302540

ATC SITE NAME:
MADISON CT 6

VERIZON SITE NAME:
MADISON 2 CT

SITE ADDRESS:
8 OLD 79
MADISON, CT 06443



Digitally Signed: 2023-10-18

ATC JOB NO: 14519448_GO
CUSTOMER ID: MADISON 2 CT
CUSTOMER #: 5000124943

ANTENNA INFORMATION & SCHEDULE

SHEET NUMBER: C-401	REVISION: 0
-------------------------------	-----------------------

Final Loading Configuration:

The following equipment has been considered for the analysis of the mount:

Mount Elevation (ft)	Equipment Elevation (ft)	Quantity	Manufacturer	Model	Status
140.00	140.00	2	KAelus	KA-6030	Added
		3	Samsung	MT6407-77A	
		6	Andrew	JAHH-65B-R3B	Retained
		1	Andrew	LNx-6514DS-A1M	
		2	Andrew	LNx-8513DS-A1M	
		3	Samsung	XXDWMM-12.5-65-8T-CBRS	
		3	Commscope	CBC78T-DS-43-2X	
		1	RFS	DB-C1-12C-24AB-0Z	
		3	Samsung	B2/B66A RRH-BR049	
		3	Samsung	B5/B13 RRH-BR04C	

Any proposed antennas not currently installed should be mounted such that the centerline of the antennas does not exceed 6 inches vertically from the center of the antenna mount.

It is acceptable to install up to any three (3) of the OVP model numbers listed below as required at any location other than the mount face without affecting the structural capacity of the mount. If OVP units are installed on the mount face, a mount re-analysis may be required unless replacing an existing OVP.

Model Number	Ports	AKA
DB-B1-6C-12AB-0Z	6	OVP-6
RVZDC-6627-PF-48	12	OVP-12

Standard Conditions:

1. All engineering services are performed on the basis that the information provided to Colliers Engineering & Design CT, P.C. and used in this analysis is current and correct. The existing equipment loading has been applied at locations determined from the supplied documentation. Any deviation from the loading locations specified in this report shall be communicated to Colliers Engineering & Design CT, P.C. to verify deviation will not adversely impact the analysis.
2. Mounts are assumed to have been properly fabricated, installed and maintained in good condition, twist free and plumb in accordance with its original design and manufacturer’s specifications.

Obvious safety and structural issues/deficiencies noticed at the time of the mount mapping and reported in the Mount Mapping Report are assumed to be corrected and documented as part of the PMI process and are not considered in the mount analysis.

The mount analysis and the mount mapping are not a condition assessment of the mount. Proper maintenance and condition assessments are still required post analysis.

3. For mount analyses completed from other data sources (including new replacement mounts) and not specifically mapped in accordance with the NSTD-446 Standard, the mounts are assumed to have been properly fabricated, installed and maintained in good condition, twist free and plumb in accordance with its original design and manufacturer’s specifications.
4. All member connections are assumed to have been designed to meet or exceed the load carrying capacity of the connected member unless otherwise specified in this report.

VERIZON WIRELESS Final Loading

Elev (ft)	Qty	Equipment	Lines
145.0	1	RFS DB-C1-12C-24AB-0Z	(2) 1 1/4" Hybriflex Cable
140.0	1	Commscope LNX-6514DS-A1M	(10) 1 5/8" Coax
	2	Andrew LNX-8513DS-A1M	
	2	Kaelus KA-6030	
	3	Commscope CBC78T-DS-43-2X	
	3	Samsung B2/B66A RRH-BR049	
	3	Samsung B5/B13 RRH-BR04C	
	3	Samsung XXDWMM-12.5-65-8T-CBRS	
	6	Commscope JAHH-65B-R3B	

Other Existing/Reserved Loading 3 MT6407-77A

Elev (ft)	Qty	Equipment	Lines	Carrier
160.2	1	18' Dipole	-	OTHER
157.9	1	10' Dipole	-	OTHER
156.8	1	11' Omni	-	OTHER
149.7	12	48" x 8" Panel	-	SPRINT NEXTEL
148.0	1	Low Profile Platform	-	-
140.0	1	Low Profile Platform	-	VERIZON
138.0	1	Collar	-	AT&T MOBILITY
137.7	3	Ericsson RRUS 32 B30 (53 lbs)	-	AT&T MOBILITY
134.0	3	Ericsson Air 6449 B77D	-	AT&T MOBILITY
132.0	1	Raycap DC6-48-60-18-8F ("Squid")	(3) 0.41" (10.3mm) Fiber (2) 0.82" (20.8mm) 8 AWG 6 (4) 0.92" (23.4mm) Cable (6) 1 5/8" Coax (4) 2" conduit	AT&T MOBILITY
	2	Raycap DC9-48-60-24-8C-EV		
	3	CCI DMP65R-BU6EA-K		
	3	Ericsson RRUS 4449 B5, B12		
	3	Ericsson RRUS 4478 B14		
	3	Ericsson RRUS 8843 B2, B66A		
	3	Kathrein Scala 80010964		
	1	Platform with Handrails		
	1	Mount Reinforcement	-	-
130.0	3	Ericsson AIR 6419 B77G	-	AT&T MOBILITY
121.0	4	RFS APXVAALL24 43-U-NA20	-	T-MOBILE
120.0	4	Ericsson Air6449 B41	(8) 1 5/8" Hybriflex	T-MOBILE
	4	Ericsson Radio 4460 B25+B66		
	4	Ericsson Radio 4480 B71+B85A		
	1	Square Platform with Handrails		
110.0	1	Platform with Handrails	-	-
	1	Commscope RDIDC-9181-PF-48	(1) 1.60" (40.6mm) Hybrid	DISH WIRELESS L.L.C.
	3	Fujitsu TA08025-B604		
	3	Fujitsu TA08025-B605		
	3	JMA Wireless MX08FRO665-21		

Nov 4, 2024 at 2:18:19 PM
8 Old Rte 79
Madison CT 06443
United States



Nov 4, 2024 at 2:15:11 PM
8 Old Rte 79
Madison CT 06443
United States

