

# STATE OF CONNECTICUT

## CONNECTICUT SITING COUNCIL

Ten Franklin Square, New Britain, CT 06051

Phone: (860) 827-2935 Fax: (860) 827-2950

E-Mail: [siting.council@po.state.ct.us](mailto:siting.council@po.state.ct.us)

[www.ct.gov/csc](http://www.ct.gov/csc)

February 3, 2005

Kenneth C. Baldwin, Esq.  
Robinson & Cole LLP  
280 Trumbull Street  
Hartford, CT 06103-3597

RE: **EM-VER-074-050110** - Cellco Partnership d/b/a Verizon Wireless notice of intent to modify an existing telecommunications facility located at 1291 Bantam Road, Litchfield, Connecticut.

Dear Attorney Baldwin:

At a public meeting held on February 2, 2005, the Connecticut Siting Council (Council) acknowledged your notice to modify this existing telecommunications facility, pursuant to Section 16-50j-73 of the Regulations of Connecticut State Agencies.

The proposed modifications are to be implemented as specified here and in your notice dated January 10, 2005, including the placement of all necessary equipment and shelters within the tower compound. The modifications are in compliance with the exception criteria in Section 16-50j-72 (b) of the Regulations of Connecticut State Agencies as changes to an existing facility site that would not increase tower height, extend the boundaries of the tower site, increase noise levels at the tower site boundary by six decibels, and increase the total radio frequencies electromagnetic radiation power density measured at the tower site boundary to or above the standard adopted by the State Department of Environmental Protection pursuant to General Statutes § 22a-162. This facility has also been carefully modeled to ensure that radio frequency emissions are conservatively below State and federal standards applicable to the frequencies now used on this tower.

This decision is under the exclusive jurisdiction of the Council. Any additional change to this facility will require explicit notice to this agency pursuant to Regulations of Connecticut State Agencies Section 16-50j-73. Such notice shall include all relevant information regarding the proposed change with cumulative worst-case modeling of radio frequency exposure at the closest point of uncontrolled access to the tower base, consistent with Federal Communications Commission, Office of Engineering and Technology, Bulletin 65. Any deviation from this format may result in the Council implementing enforcement proceedings pursuant to General Statutes § 16-50u including, without limitation, imposition of expenses resulting from such failure and of civil penalties in an amount not less than one thousand dollars per day for each day of construction or operation in material violation.

Thank you for your attention and cooperation.

Very truly yours,

Pamela B. Katz, P.E.  
Chairman

PBK/laf

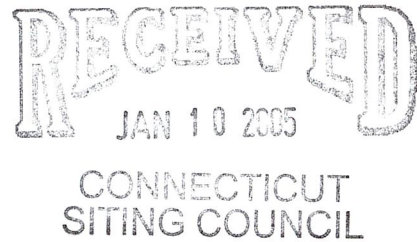
- c: The Honorable Leo Paul, Jr., First Selectman, Town of Litchfield
- Ruth Mulcahy, Land Use Director, Town of Litchfield
- James R. Riley, Chief Executive Officer, Bay Communications
- Thomas J. Regan, Esq., Brown Rudnick Berlack Israels, LLP
- Michele G. Briggs, New Cingular Wireless PCS, LLC

Trumbull Street  
Litchfield, CT 06103-3597  
Main (860) 275-8200  
Fax (860) 275-8299  
kbaldwin@rc.com  
Direct (860) 275-8345

January 10, 2005

*Via Hand Delivery*

S. Derek Phelps  
Executive Director  
Connecticut Siting Council  
10 Franklin Square  
New Britain, CT 06051



Re: **Notice of Exempt Modification**  
**1291 Bantam Road**  
**Litchfield, Connecticut**

Dear Mr. Phelps:

Cellco Partnership d/b/a Verizon Wireless (“Cellco”) intends to install antennas on the existing 150-foot monopole tower, 1291 Bantam Road in Litchfield, Connecticut. The tower is owned and operated by the Bay Communications and was approved in Council Docket No. 258. Sprint is currently located at the 150-foot level of the tower. Please accept this letter as notification pursuant to R.C.S.A. § 16-50j-73, for construction that constitutes an exempt modification pursuant to R.C.S.A. § 16-50j-72(b)(2). In accordance with R.C.S.A. § 16-50j-73, a copy of this letter is being sent to the Litchfield First Selectman, Leo Paul, Jr.

The facility consists of a 150-foot self-supporting monopole tower capable of supporting multiple carriers within a fenced site compound. Cellco proposes to install twelve (12) panel-type antennas at the 140-foot level on the tower and a 12’ x 30’ single-story equipment shelter near the base of the tower within the existing fenced site compound. (See Tab 1- Project Plans).

The planned modifications to the Litchfield facility fall squarely within those activities explicitly provided for in R.C.S.A. § 16-50j-72(b)(2).

1. The proposed modification will not increase the overall height of the existing tower. Cellco’s antennas will be mounted with their centerline at the 140-foot level on the 150-foot tower.



Law Offices

BOSTON

HARTFORD

NEW LONDON

STAMFORD

GREENWICH

NEW YORK

SARASOTA

www.rc.com

HART1-1223750-1

# ROBINSON & COLE LLP

S. Derek Phelps  
January 10, 2005  
Page 2

2. The proposed installation of twelve (12) panel-type antennas and a 12' x 30' equipment shelter will not require an extension of the fenced site compound.

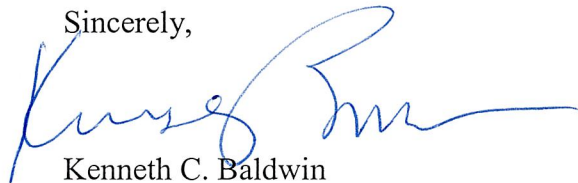
3. The proposed antenna modification will not increase the noise levels at the facility by six decibels or more.

4. The operation of the antennas will not increase radio frequency (RF) power density levels at the facility to a level at or above the Federal Communications Commission (FCC) adopted safety standard. The cumulative worst-case RF power density calculations for the existing and proposed Cellco antennas would be 1.10% of the FCC standard. A copy of the cumulative power density calculations table is attached behind Tab2.

Also attached, behind Tab 3, is an engineer's certification stating that the tower can support the existing and proposed antennas and associated equipment.

For the foregoing reasons, Cellco respectfully submits that the proposed antenna installation at the Litchfield facility tower constitutes an exempt modification under R.C.S.A. § 16-50j-72(b)(2).

Sincerely,



Kenneth C. Baldwin

#### Attachments

cc: Leo Paul, Jr., First Selectman  
Sandy M. Carter



CELLCO PARTNERSHIP

DBA



**verizon wireless**

# LITCHFIELD SOUTHWEST

1291 BANTAM ROAD  
LITCHFIELD, CONNECTICUT

### PROJECT SUMMARY

**SITE NAME:** LITCHFIELD SOUTHWEST  
**SITE ADDRESS:** 1291 BANTAM ROAD  
LITCHFIELD, CONNECTICUT  
**CONTACT PERSON:** CELLCO PARTNERSHIP DBA  
VERIZON WIRELESS  
(800) 852-8822  
**GOVERNING CODE:** CONNECTICUT STATE BUILDING  
AND LIFE SAFETY CODE  
**APPLICANT:** CELLCO PARTNERSHIP DBA  
VERIZON WIRELESS  
EAST HARTFORD, CT 06108  
**ARCHITECT:** USE CORPORATION, A.S.  
775 BROOK STREET, BLDG. 5  
ROCKY HILL, CT 06067

### LEGEND

| SYMBOL | DESCRIPTION   |
|--------|---|
|        | SECTION OR DETAIL NUMBER<br>SHEET WHERE DETAIL/SECTION OCCURS |
|        | ELEVATION NUMBER<br>SHEET WHERE ELEVATION OCCURS              |

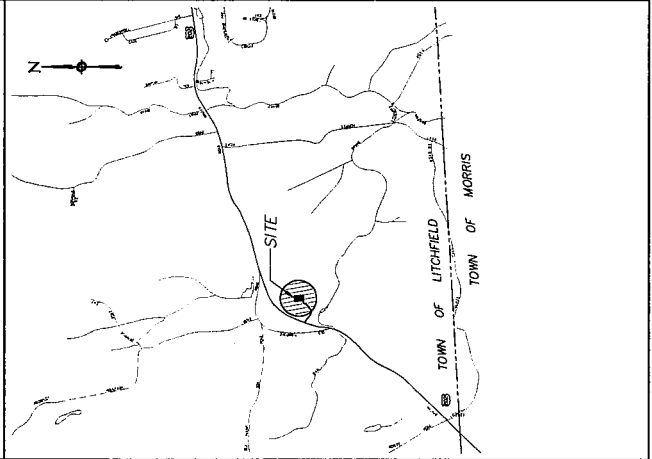
### ABBREVIATIONS

MIN. MINIMUM  
 V.C. VERIFY IN FIELD  
 O.C. ON CENTER  
 P.S.F. POUNDS/SQUARE FOOT  
 TYP. TYPICAL  
 CONC. CONCRETE  
 TOP OF WALL

### SHEET INDEX

| SH. NO. | DESCRIPTION                            |
|---------|--|
| T-1     | TITLE SHEET - GENERAL NOTES AND LEGEND |
| SP-1    | SITE PLAN AND TOWER ELEVATION          |

### VICINITY MAP



CELLCO PARTNERSHIP  
DBA  
**verizon wireless**

USE CORPORATION  
705 BROOK STREET, BLDG. 5  
ROCKY HILL, CONNECTICUT  
1-800-522-8822

AGE: 5/24

PROJECT NO.: 36929463

JOB NO.: VZ1-112

DRAWN BY: CRS

CHECKED BY:

ISSUED FOR:  
 IT-UPON SIGNING COVER REVIEW  
 01-25-05 BING GONER, TML

THE INFORMATION CONTAINED  
 IN THIS SET OF DRAWINGS  
 IS PROPRIETARY BY NATURE.  
 ANY USE OR DISCLOSURE  
 OF THIS INFORMATION WITHOUT  
 RELATES TO VERIZON WIRELESS  
 IS STRICTLY PROHIBITED.

LITCHFIELD  
SOUTHWEST  
 1291 BANTAM ROAD  
LITCHFIELD, CONNECTICUT

SCALE: AS NOTED

TITLE SHEET -  
GENERAL NOTES  
AND LEGEND

T-1

CELLCO PARTNERSHIP  
DBA  
Verizon Wireless

A/E FIRM  
**AES CORPORATION AES**  
795 BROOK STREET, BLDG 5  
ROCKY HILL, CONNECTICUT  
1-860-524-8882

A/E SEAL

PROJECT NO.: 36929463

JOB NO.: V21-172

DRAWN BY: CJS

CHECKED BY:

ISSUED FOR

11-10-01 SING CONCA. REV#

01-05-05 SING CONCA. FINAL

THE INFORMATION CONTAINED  
IN THIS SET OF DOCUMENTS  
IS THE PROPERTY OF AES CORPORATION.  
ANY REPRODUCTION OR USE  
OTHER THAN THAT WHICH  
RELATES TO VERICON WIRELESS  
IS STRICTLY PROHIBITED.

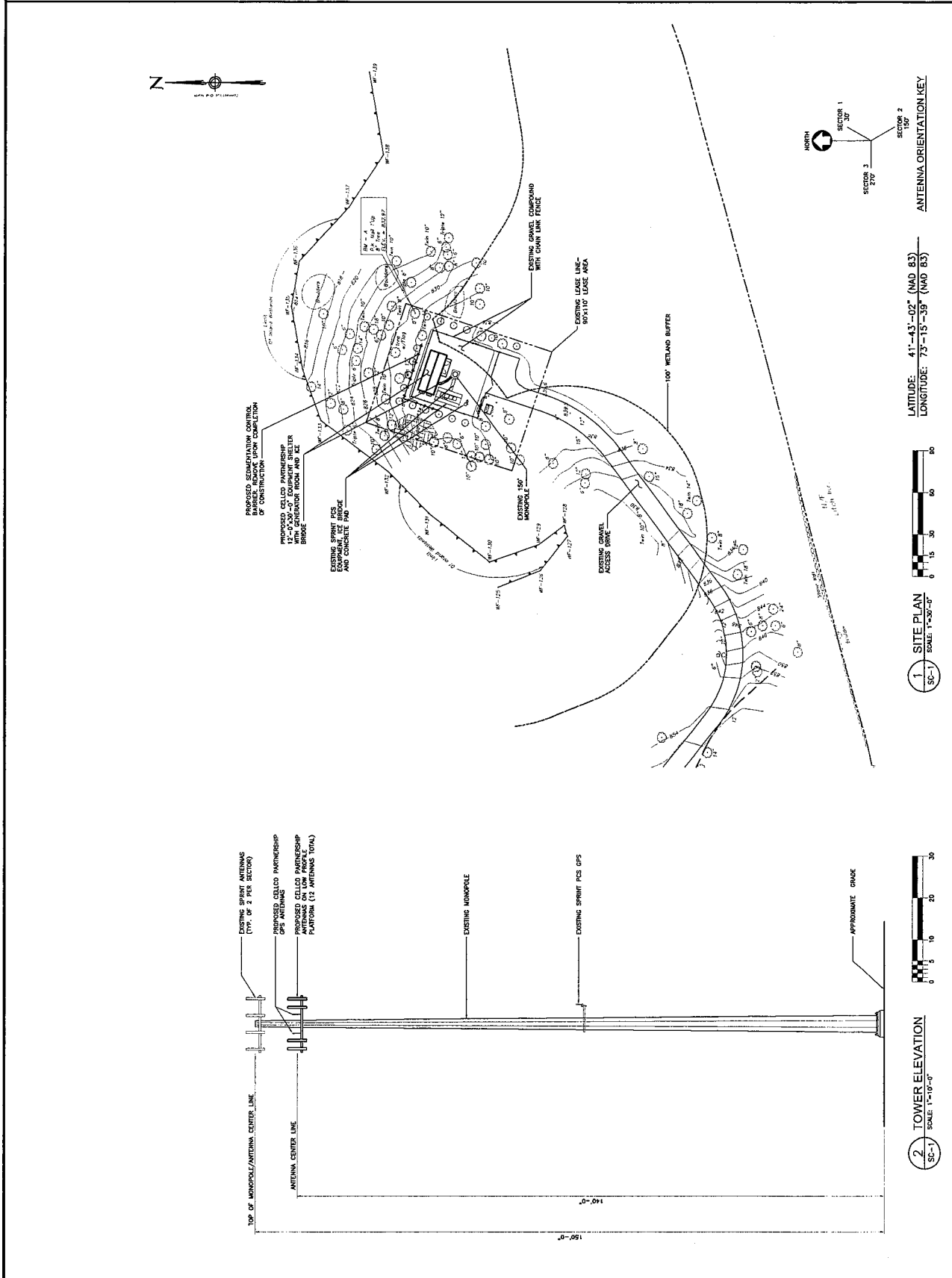
LITCHFIELD  
SOUTHWEST

1291 BANTAM ROAD  
LITCHFIELD, CONNECTICUT

SCALE: AS NOTED

SITE PLAN AND  
TOWER ELEVATION

SC-1



General Power Density

Site Name: Litchfield SW  
 Tower Height: 140 FT

| Operator  | Operating Frequency (MHz) | Number of Trans. | ERP Per Trans. (watts) | Total ERP (watts) | Distance to Target (feet) | Calculated Power Density (mW/cm <sup>2</sup> ) | Maximum Permissible Exposure (mW/cm <sup>2</sup> ) | Fraction of MPE (%) |
|---|---------------------------|------------------|------------------------|-------------------|---------------------------|--|--|---------------------|
| Verizon   | 1900                      | 3                | 200                    | 600               | 140                       | 0.0110   | 1  | 1.10%               |
| <b>Total Percentage of Maximum Permissible Exposure</b> |                           |                  |                        |                   |                           |  |  | <b>1.10%</b>        |

\*Guidelines adopted by the FCC on August 1, 1996, 47 CFR Part 1 based on NCRP Report 86, 1986 and generally on ANSI/IEEE C95.1-1992

MHz = Megahertz

mW/cm<sup>2</sup> = milliwatts per square centimeter

ERP = Effective Radiated Power



December 01, 2004

Ms. Pamela Katz, Chairman  
Connecticut Siting Council  
10 Franklin Square  
New Britain, CT 06051

**Reference: Existing Telecommunications Facility Modification  
Verizon Wireless  
1291 Bantam Road  
Litchfield, Connecticut  
VZ1 112/36929468.00000**

Dear Ms. Katz:

URS Corporation (URS) conducted a structural review of the existing 150' monopole at 1291 Bantam Road, Litchfield, Connecticut. The purpose of our review was to evaluate the effect of the proposed Verizon Wireless antenna addition on the existing monopole structure. The monopole structure design documents were prepared by Engineered Endeavors Inc., job number 12278 approved January 26, 2004. The tower was designed to support three (3) telecommunication carriers between elevation 150' and 130'. The design considered twelve (12) Decibel DB 980 antennas on a 12' low profile platform for each carrier. The tower currently supports Sprint PCS antennas mounted on a low profile platform at the 150' elevation. The proposed Verizon Wireless addition considered in this review is as follows:

| Antenna and Mount Modification   | Carrier          | Antenna Center Elevation |
|--|------------------|--------------------------|
| (12) Decibel DB950F85E-M antennas on low profile platform with (12) 1-5/8" coaxial cables inside the monopole. | Verizon Wireless | 140' A.G.L.              |

The results of this review indicate the structure to be in compliance with the loading conditions and the material and member sizes for the monopole structure and its foundation. The monopole is considered feasible with the applicable TIA/EIA-222-F wind load classification specified and proposed Verizon Wireless and existing antenna loading. The structure and its foundation are in compliance with the BOCA 1996 and Connecticut State Building Code supplement 1999 including the latest amendments.

If you should have any questions, please call.

Sincerely,

**URS Corporation AES**

  
Richard A. Sambor, P.E.  
Manager Facilities Design



RAS

cc: Mark Gauger - Verizon Wireless  
Rachel A. Mayo - Robinson & Cole LLP  
Douglas Roberts, AIA - URS  
CF/Book