



August 18, 2023

VIA ELECTRONIC AND FEDERAL EXPRESS

Melanie A. Bachman, Executive Director  
Connecticut Siting Council  
10 Franklin Square  
New Britain, CT 06051

New Cingular Wireless PCS, LLC ("AT&T")  
Notice of Exempt Modification  
Emergency Back-up Generator  
889R Colonel Ledyard Highway, Ledyard, CT 06339  
Lat.: 41.46199190; Long.: -072.02361110

Dear Ms. Bachman:

This letter and enclosures are respectfully submitted on behalf of New Cingular Wireless PCS, LLC ("AT&T"). AT&T currently maintains its wireless telecommunications facility on the existing tower located at 889R Colonel Ledyard Highway in the Town of Ledyard, Connecticut. The underlying property and tower are owned by Red Wolf Broadcasting. AT&T submits this letter and enclosures to the Connecticut Siting Council ("Council") to notify the Council of AT&T's intent to perform modifications to the existing facility that do not have substantial adverse environmental effects and thus do not require a certificate pursuant to Section 16-50k of the Connecticut General Statutes.

AT&T intends to install one (1) new Generac 30kW Diesel Generator within the existing grade-level fenced equipment compound as demonstrated on the plans enclosed as Attachment 1. AT&T's existing facility supports its FirstNet program which provides first responders with priority access to AT&T's network to ensure adequate communication capabilities in the event of emergency. AT&T's proposed generator will ensure that critical communication capability for first responders and the public are not lost in the event of a loss of power.

AT&T's proposed generator will also advance the State's goal of natural disaster and emergency preparedness. As discussed in the Council's Docket 432 Findings and Report and Docket 440 proceedings and Findings of Fact (Nos. 76- 77), in response to two significant storm events in 2011, the State formed a Two Storm Panel (the "Panel") that evaluated Connecticut's approach to planning and mitigation of impacts associated with emergencies and natural disasters. The Panel found that "wireless telecommunications service providers were not prepared to serve residential and business customers during a power outage" because certain companies had limited backup generator capacity.

# GDIT

The Panel also noted that “[t]he failure of a large portion of Connecticut’s telecommunications system during the two storms is a life safety issue.” The Panel recommended that State regulatory bodies review “telecommunications services currently in place to verify that the vendors have sufficient generator and backhaul capacity to meet the emergency needs of consumers and businesses” and that the “Connecticut Siting Council should require continuity of service plans for any cellular tower to be erected.” The planned modifications will ensure continuity of services by reinforcing AT&T’s backup power and backhaul capacity to meet the emergency needs of first responders, consumers, and businesses in the event of a power outage.

The planned modifications to the facility fall squarely within the activities explicitly provided for in R.C.S.A. § 16-50j-72(b)(2) as the planned modifications:

- Will not result in an increase in the height of the existing structure;
- Will not require the extension of the site boundary;
- Will not increase noise levels at the facility by more than six decibels or more, or to levels that exceed state or local criteria since emergency backup generators are exempt from noise regulations as “noise created as a result of, or relating to, an emergency”;
- Will not increase radio frequency emission at the facility to a level at or above the Federal Communications Commission safety standards;
- Will not cause a change or alteration in the physical or environmental characteristics of the site; and
- Will not impair the structural integrity of the facility.

This modification complies with the aforementioned approval. AT&T’s proposed modification will maintain compliance with any relevant conditions these original approvals and any other subsequent approvals. The proposed modifications will have no impact on the existing tower structure itself or the radiofrequency emissions as the proposed modifications only consist of the addition of one new generator within the grade-level equipment compound. Thus, AT&T respectfully requests a waiver from submission of information relating to the existing tower structure or the radio-frequency emissions.

Please accept this letter as notification pursuant to R.C.S.A. § 16-50j-73 for construction that constitutes an exempt modification pursuant to R.C.S.A. § 16-50j-73. In accordance with R.C.S.A.

§ 16-50j-73, a copy of this letter and enclosure are being sent to Fred Allyn, III, Town of Ledyard Mayor, Juliet Hodge, Planning Director, and Property/Tower Owner as stated above. Certification of Service is enclosed as Attachment 3.



For the foregoing reasons, AT&T respectfully submits that the proposed modification to the above referenced wireless telecommunications facility constitutes an exempt modification under R.C.S.A. § 16-50j-72(b)(2).

Very truly yours

*Catherine Conklin*

Catherine Conklin, Site Acquisition Specialist  
General Dynamics Wireless Services  
2586 Industry Lane, Suite 100  
Norristown, PA 19403  
(202) 568-0437  
[catherine.conklin@gdit.com](mailto:catherine.conklin@gdit.com)

**GENERAL DYNAMICS**  
Information Technology

CC:

Fred Allyn, III, Mayor  
Town of Ledyard  
741 Colonel Ledyard Highway  
Ledyard, CT 06339  
(860) 464-3221

Juliet Hodge, Planning Director  
Town of Ledyard  
741 Colonel Ledyard Highway  
Ledyard, CT 06339  
(860) 464-3214

Red Wolf Broadcasting  
John J. Fuller, President, GM  
758 Colonel Ledyard Highway  
Ledyard, CT 06339  
(860) 464-1065

# ATTACHMENT 1



# at&t Mobility

**SITE NAME: LEDYARD COLONEL RD**  
**FA LOCATION CODE: 10035428**

**GENERATOR PROJECT**  
**30KW GENERAC DIESEL GENERATOR**  
**200A GENERAC ATS**

**889R COLONEL LEDYARD HIGHWAY**  
**LEDYARD, CT 06339**

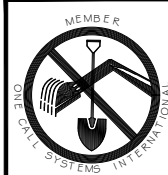


## VICINITY MAP



## SCOPE OF WORK

ADD STANDBY GENERATOR, ASSOCIATED CONCRETE PAD, AND UTILITY EQUIPMENT TO EXISTING AT&T EQUIPMENT AREA. THERE WILL BE NO CHANGE IN THE SIZE OR HEIGHT OF THE TOWER OR ANTENNAS.



TO OBTAIN LOCATION OF PARTICIPANTS' UNDERGROUND FACILITIES BEFORE YOU DIG IN CONNECTICUT

**CALL BEFORE YOU DIG**  
**811 OR 1-800-922-4455**

CONNECTICUT PUBLIC ACT 87-71 REQUIRES MIN. 2 WORKING DAYS NOTICE BEFORE YOU EXCAVATE.

## APPLICABLE BUILDING CODE & STANDARDS

ALL WORK AND MATERIALS SHALL BE PERFORMED AND INSTALLED IN ACCORDANCE WITH THE CURRENT EDITION OF THE FOLLOWING CODES AS ADOPTED BY THE GOVERNING LOCAL AUTHORITIES. NOTHING IN THESE PLANS ARE TO BE CONSTRUCTED TO PERMIT WORK NOT CONFORMING TO THESE CODES:

1. INTERNATIONAL BUILDING CODE 2021
2. NATIONAL ELECTRIC CODE 2017
3. AMERICAN CONCRETE INSTITUTE (ACI) 318, BUILDING CODE REQUIREMENTS FOR STRUCTURAL CONCRETE
4. AMERICAN INSTITUTE OF STEEL CONSTRUCTION (AISC), MANUAL OF STEEL CONSTRUCTION
5. TELECOMMUNICATIONS INDUSTRY ASSOCIATION (TIA) 222-G, STRUCTURAL STANDARDS FOR STEEL TOWER AND ANTENNA SUPPORTING STRUCTURES
6. TIA 607, COMMERCIAL BUILDING GROUNDING AND BONDING REQUIREMENTS FOR TELECOMMUNICATIONS

## AERIAL VIEW OF SITE



## PROJECT INFORMATION

### PROJECT MANAGER:

MATTHEW HIGGINS  
GENERAL DYNAMICS WIRELESS SERVICES  
101 STATION DRIVE  
WESTWOOD, MA 02090  
EMAIL: Matthew.Higgins@GDIT.com

### ENGINEER:

RAMAKER & ASSOCIATES, INC.  
855 COMMUNITY DRIVE  
SAUK CITY, WI 53583  
PH.: (608) 643-4100  
FAX: (608) 643-7999  
CONTACT: TYLER BEATTY  
EMAIL: tbeatty@ramaker.com

### APPLICANT INFORMATION:

AT&T MOBILITY  
7150 STANDARD DR  
HANOVER, MD 21076

### SITE DATA:

SITE NAME: LEDYARD COLONEL RD  
FA NUMBER: 10035428

PROPERTY OWNER:  
RED WOLF BROADCASTING  
PO BOX 357  
LEDYARD, CT 06339

ADDRESS:  
889R COLONEL LEDYARD HIGHWAY  
LEDYARD, CT 06339

COUNTY: NEW LONDON

LAT.: 41.4619919°  
LONG.: -72.0236111°

GROUND ELEVATION: 313 FT AMSL

DO NOT SCALE DRAWINGS:  
CONTRACTOR SHALL VERIFY ALL PLANS & EXISTING DIMENSIONS & CONDITIONS ON THE JOB SITE & SHALL IMMEDIATELY NOTIFY THE ENGINEER IN WRITING OF ANY DISCREPANCIES BEFORE PROCEEDING WITH THE WORK OR BE RESPONSIBLE FOR SAME.

THE INFORMATION CONTAINED IN THIS SET OF DOCUMENTS IS PROPRIETARY BY NATURE. ANY USE OR DISCLOSURE OTHER THAN THAT WHICH RELATES TO THE CLIENT IS STRICTLY PROHIBITED.

## SHEET INDEX

### GENERAL:

T-1 TITLE SHEET

### NOTES:

N-1 GENERAL NOTES

### SITE:

A-1 SITE PLAN  
A-2 SITE PLAN & EQUIPMENT LAYOUT  
S-1 FOUNDATION DETAILS

### ELECTRICAL & GROUNDING:

E-1 WIRING DETAILS  
E-2 PANEL AND PENETRATION DETAILS  
E-3 ATS, CONDUIT & GROUND ROD DETAILS  
E-4 GENERAC GENERATOR SPECIFICATIONS  
E-4.1 GENERAC GENERATOR SPECIFICATIONS  
E-4.2 GENERAC GENERATOR SPECIFICATIONS  
E-5 GENERAC ATS SPECIFICATIONS  
E-5.1 GENERAC ATS SPECIFICATIONS

## SIGNATURE BLOCK

AT&T MGR. \_\_\_\_\_ DATE \_\_\_\_\_

GENERAL DYNAMICS  
CONSTRUCTION MGR. \_\_\_\_\_ DATE \_\_\_\_\_

SITE ACQUISITION \_\_\_\_\_ DATE \_\_\_\_\_

Certification & Seal:  
I hereby certify that this plan, specification, or report was prepared by me or under my direct supervision and that I am a duly Licensed Professional Engineer under the laws of the State of Connecticut.



Signature: \_\_\_\_\_ Date: 8/17/2023

MARK	DATE	DESCRIPTION
ISSUE	FINAL	DATE ISSUED 08/17/2023

PROJECT TITLE:

**LEDYARD COLONEL RD**  
**FA ID # 10035428**

PROJECT INFORMATION:  
889R COLONEL LEDYARD HIGHWAY  
LEDYARD, CT 06339

SHEET TITLE:

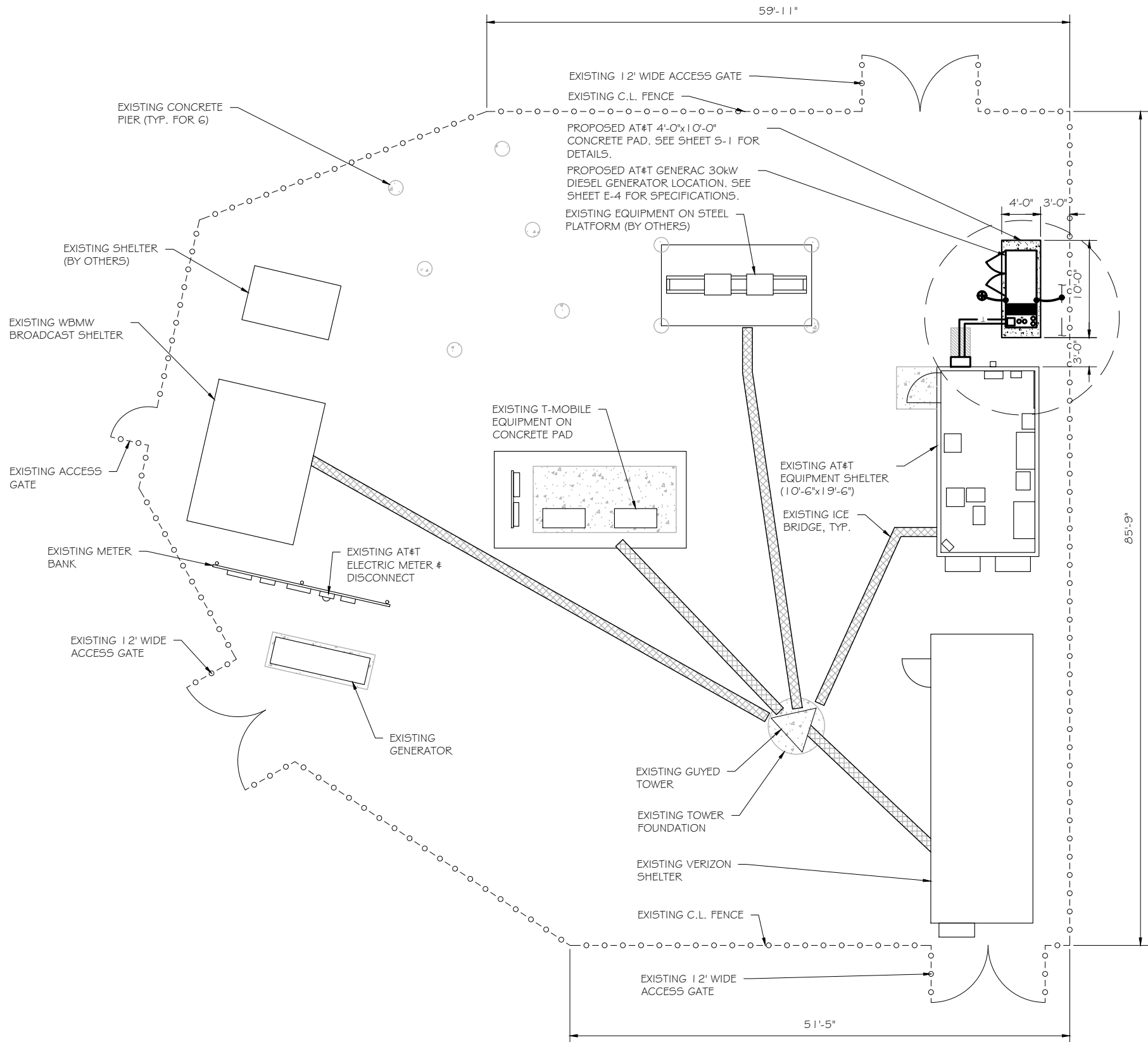
**TITLE SHEET**

SCALE: NONE

PROJECT NUMBER	57106
SHEET NUMBER	T-1







SITE PLAN  
SCALE: 1" = 12.5'

1





**RAMAKER**  
employee-owned  
(608) 643-4100 [www.ramaker.com](http://www.ramaker.com)

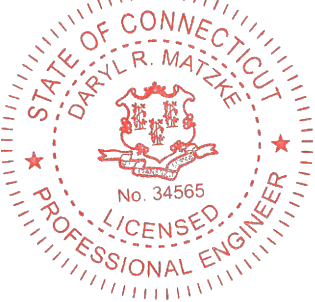
PREPARED FOR:



**at&t**  
Mobility

CONSULTANT:  
**GENERAL DYNAMICS**  
Information Technology, Inc.  
GENERAL DYNAMICS  
101 STATION DR  
WESTWOOD, MA 02090

Certification & Seal:  
I hereby certify that this plan, specification, or report was prepared by me or under my direct supervision and that I am a duly Licensed Professional Engineer under the laws of the State of Connecticut.



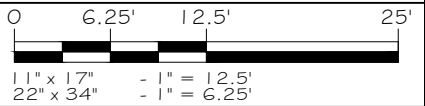
Signature:  Date: 8/17/2023


MARK	DATE	DESCRIPTION
ISSUE	FINAL	DATE ISSUED 08/17/2023

PROJECT TITLE:  
**LEDYARD COLONEL RD  
FA ID # 10035428**

PROJECT INFORMATION:  
**889R COLONEL LEDYARD HIGHWAY  
LEDYARD, CT 06339**

SHEET TITLE:  
**SITE PLAN**



PROJECT NUMBER: 57106  
SHEET NUMBER: A-1

GENERAL:

- NEW GENERAC DIESEL GENERATOR PROVIDED BY GENERAL DYNAMICS & INSTALLED BY GENERAL CONTRACTOR, SEE E-4.
- NEW 4'-0" X 10'-0" CONCRETE PAD PROVIDED & INSTALLED BY GENERAL CONTRACTOR (AS REQUIRED) SEE 5-1
- NEW GENERAC AUTOMATIC TRANSFER SWITCH PROVIDED BY GENERAL DYNAMICS & INSTALLED BY CONTRACTOR (AS REQUIRED) SEE E-3 & E-5.
- CONTRACTOR TO VERIFY ALL EXISTING UTILITIES PRIOR TO CONSTRUCTION
- CONTRACTOR SHALL RESTORE & REPAIR ANY DAMAGED AREAS CAUSED BY CONSTRUCTION TO ORIGINAL OR BETTER CONDITION

- INSTALL PULL STRING IN EACH CONDUIT
- (1) NEW 2" AND (1) NEW 1" ELECTRICAL CONDUITS WITH CONDUCTORS TO RUN FROM NEW GENERATOR TO NEW ATS. CONDUIT PROVIDED AND INSTALLED BY GENERAL CONTRACTOR. SEE E-1, E-2 & E-3.
- (1) NEW 1" ELECTRICAL CONDUIT WITH CONDUCTORS TO RUN FROM NEW GENERATOR TO AC PANEL. CONDUIT PROVIDED & INSTALLED BY GENERAL CONTRACTOR. SEE E-1, E-2 & E-3.
- (1) NEW 1" ALARM CONDUIT & CABLING PROVIDED & INSTALLED BY GENERAL CONTRACTOR. SEE E-1, E-2 & E-3.

- NEW EXOTHERMIC CONNECTION FROM EXISTING GROUND RING TO NEW MECHANICAL CONNECTION AT GENERATOR CHASSIS. GENERAL CONTRACTOR TO VERIFY LOCATION IN FIELD. LOCATE GROUND RODS NO MORE THAN 8'-0" APART.



**at&t**  
Mobility

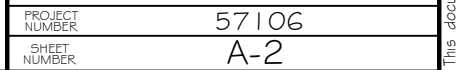
GENERAL DYNAMICS  
101 STATION DR  
WESTWOOD, MA 02090

A circular red seal for a Professional Engineer in the State of Connecticut. The outer ring contains the text "STATE OF CONNECTICUT" at the top and "PROFESSIONAL ENGINEER" at the bottom, separated by two stars. The center of the seal features the state coat of arms, with the name "DARYL R. MATZKE" arched above it and the license number "No. 34565" below it. A banner at the base of the coat of arms reads "SUSTINERE".

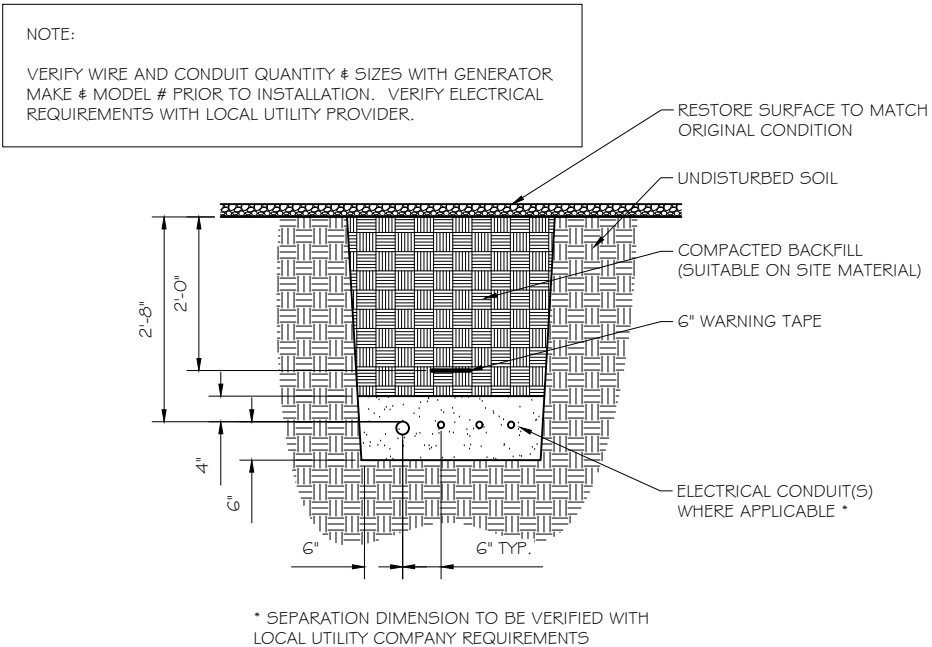

LEDYARD COLONEL RD  
FA ID # 10035428

SHEET TITLE:

SITE PLAN & EQUIPMENT LAYOUT







REF: ATT GENERATOR PACKAGE

UL REGISTRATION NUMBER: MH18459

U.L. 142 DOUBLE WALL FUEL TANK BASE SPECIFICATION

FUEL TANK BASE CONSTRUCTION:

- BE CONSTRUCTED IN ACCORDANCE WITH UNDERWRITERS LABORATORIES STANDARD UL-142. BE CONSTRUCTED IN ACCORDANCE WITH FLAMMABLE & COMBUSTIBLE LIQUIDS CODE, NFPA 30; THE STANDARD FOR INSTALLATION & USE OF STATIONARY COMBUSTIBLE ENGINE & GAS TURBINES, NFPA 37; AND THE STANDARD FOR EMERGENCY & STANDBY POWER SYSTEMS, NFPA 110.
- ANCHORS MINIMUM (4) @ 5/8" FOR GEN-SET MOUNTING

SUB BASE TANK TESTING: PRIMARY TANK & SECONDARY CONTAINMENT BASIN SECTIONS SHALL BE PRESSURIZED AT 3-5 PSI AND LEAK-CHECKED TO ENSURE INTEGRITY OF SUB BASE WELD SEAMS PER UL-142 STANDARDS

FUEL FILL: 5 GALLON SPILL CONTAINMENT WITH ALARM

- 40% REMAINING FOR ALARM
- 20% REMAINING FOR SHUT-DOWN

FACTORY PRE-SET AT 95% FULL FOR ALARM

FUEL CONTAINMENT BASIN: SUB BASE TANK SHALL INCLUDE A WELDED STEEL CONTAINMENT BASIN, SIZED AT A MINIMUM OF 110% OF THE TANK CAPACITY TO PREVENT ESCAPE OF FUEL INTO THE ENVIRONMENT IN THE EVENT OF A TANK RUPTURE. A FUEL CONTAINMENT BASIN LEAK DETECTOR SWITCH SHALL BE PROVIDED.

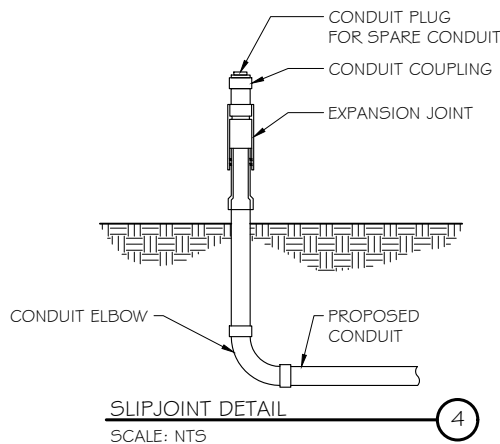
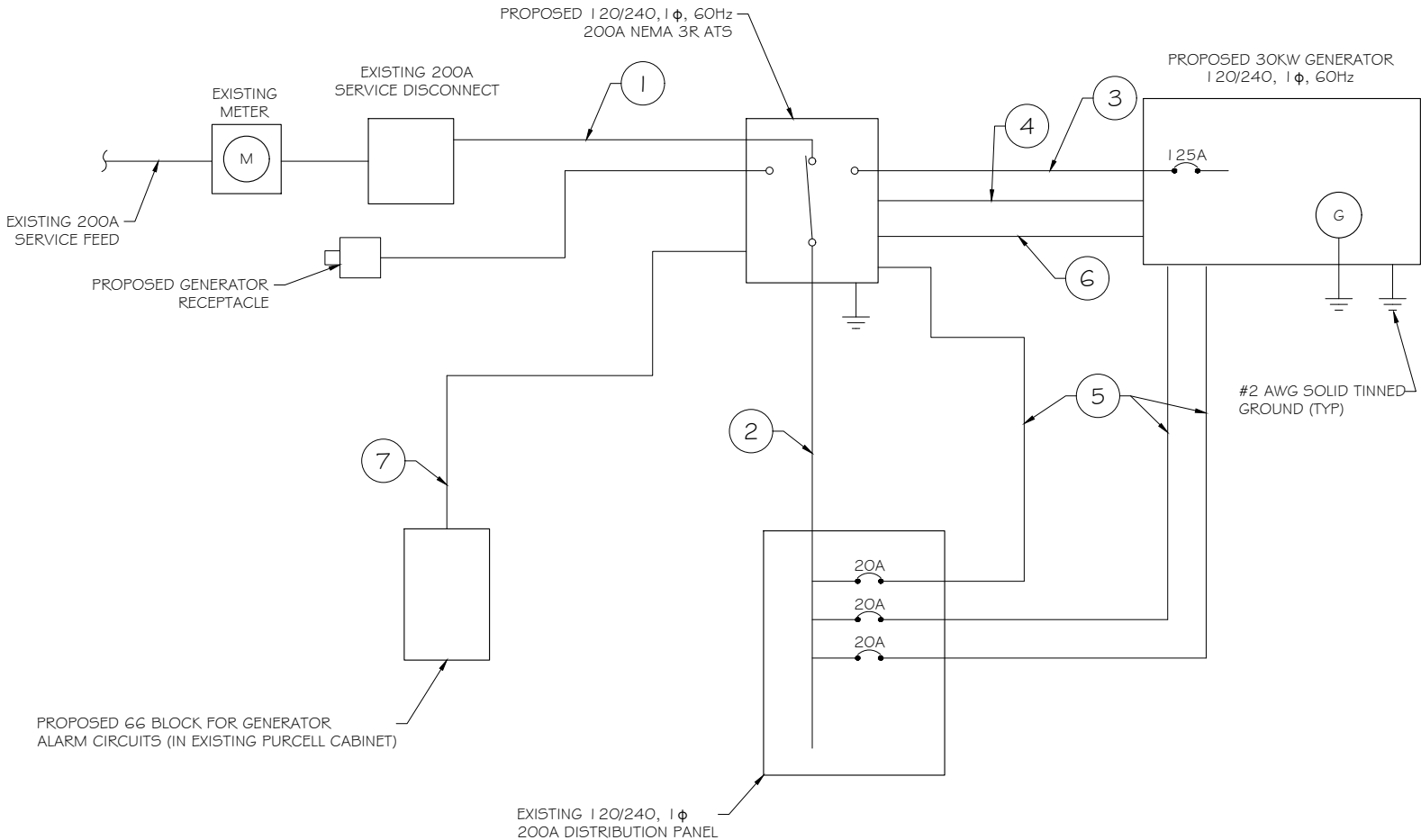


DIAGRAM CIRCUIT SCHEDULE						
NO.	FROM	TO	WIRES	GROUND	CONDUIT SIZE	FUNCTION
1	NORMAL POWER SOURCE	AUTOMATIC TRANSFER SWITCH	(3) 3/0	(1) #4	2"	NORMAL POWER FEEDER TO ATS (CUT BACK EXISTING)
2	AUTOMATIC TRANSFER SWITCH	LOAD CENTER	(3) 3/0	(1) #4	2"	POWER FEEDER FROM ATS TO PANEL
3	GENERATOR	AUTOMATIC TRANSFER SWITCH	(3) #1	(1) #6	1 - 1/2"	EMERGENCY POWER FEEDER TO ATS
4	AUTOMATIC TRANSFER SWITCH	GENERATOR	(2) #10	(1) #10	1"	START CIRCUIT
5	LOAD CENTER (DISTRIBUTION CENTER)	GENERATOR, ATS	(2) #12 (2) #12 (2) #12	(1) #12 (1) #12 (1) #12	1" 1" 1"	CIRCUIT FOR GENERATOR BLOCK HEATER & BATTERY HEATER CIRCUIT FOR BATTERY CHARGER CIRCUIT FOR ATS
6	GENERATOR	AUTOMATIC TRANSFER SWITCH	12-PAIR 24 AWG OR 2EA 6-PAIR CAT5	N/A	1"	ALARM CABLES (1) 12 PAIR 24 AWG. PROVIDE 24" OF SLACK CABLE. FINAL PUNCH DOWN IS BY AT&T TECH. LABEL ALL WIRES
7	AUTOMATIC TRANSFER SWITCH	ALARM BLOCK	12-PAIR 24 AWG OR 2EA 6-PAIR CAT5	N/A	1"	ALARM CABLES (1) 12 PAIR 24 AWG (RUN TO PURCELL CABINET & INTO ALARM BOX). PROVIDE 24" OF SLACK CABLE. FINAL PUNCH DOWN IS BY AT&T TECH. LABEL ALL WIRES

CIRCUIT DETAIL  
SCALE: NTS

ALARM WIRE IDENTIFICATION CHART	
WIRE	ALARM
BROWN BROWN / WHITE	GENERATOR RUNNING
GREEN GREEN / WHITE	CRITICAL FAULT
BLUE BLUE / WHITE	MINOR FAULT
ORANGE ORANGE / WHITE	LOW FUEL
BROWN * BROWN / WHITE *	FUEL LEAK
*CAT5 CABLE ONLY, FROM 2ND CAT5 CABLE	

ALARM WIRING IDENTIFICATION CHART  
SCALE: NTS



PROPOSED WIRING DIAGRAM  
SCALE: NTS

  
**RAMAKER**  
employee-owned  
(608) 643-4100    www.ramaker.com

PREPARED FOR:



CONSULTANT:  
**GENERAL DYNAMICS**  
Information Technology, Inc.  
  
GENERAL DYNAMICS  
101 STATION DR  
WESTWOOD, MA 02090

Certification & Seal:  
I hereby certify that this plan, specification, or report was prepared by me or under my direct supervision and that I am a duly Licensed Professional Engineer under the laws of the State of Connecticut.

  
  
Date: 8/17/2023

MARK	DATE	DESCRIPTION
ISSUE	FINAL	DATE ISSUED 08/17/2023
PHASE		
PROJECT TITLE:		

LEDYARD COLONEL RD  
FA ID # 10035428

PROJECT INFORMATION:  
889R COLONEL LEDYARD HIGHWAY  
LEDYARD, CT 06339

SHEET TITLE:  
  
WIRING DETAILS

SCALE: NONE

PROJECT NUMBER	57106
SHEET NUMBER	E-1

AC Distribution Panel - Layout Diagram									
Breaker Position	Breaker Type	On/Off	Size	Circuit Label	Breaker Position	Breaker Type	On/Off	Size	Circuit Label
1	2P	OFF	40	SPARE	2	1P	ON	20	SPARE
3					4	1P	ON	20	TELCO RECEPT.
5	1P	ON	20	INT. LIGHTS	6	1P	ON	20	RECEPT. LEFT
7	1P	ON	20	GFI	8	2P	ON	50	HVAC
9	1P	ON	20	EXT. LIGHTS	10				
11	2P	ON	30	RECTIFIER 1	12	2P	ON	30	RECTIFIER 2
13					14				
15	2P	ON	30	RECTIFIER 3	16	2P	ON	30	RECTIFIER 4
17					18				
19	2P	ON	30	RECTIFIER 5	20	2P	ON	30	RECTIFIER 6
21					22				
23	2P	OFF	30	RECTIFIER 7	24	2P	OFF	30	RECTIFIER 8
25					26				
27	2P	OFF	30	RECTIFIER 9	28	1P	ON	20	RECEPT. RIGHT
29					30	1P	ON	20	HVAC CONTROLLER
31	1P	OFF	20	SPARE	32	1P	ON	20	SMOKE DETECTOR
33	1P	OFF	20	SPARE	34	1P	ON	20	ATS
35					36	1P	ON	20	BLOCK HEATER
37					38	1P	ON	20	BATTERY CHARGER
39					40				

PROPOSED 20A BREAKERS FOR ATS, BLOCK HEATER AND BATTERY CHARGER ON NEW AT&T GENERATOR

EXISTING PANEL SCHEDULE

SCALE: NTS

NOTE:  
CONTRACTOR TO LABEL WIRES WITH P-TOUCH OR SIMILAR LABELS ONLY. ABSOLUTELY NO HANDWRITTEN LABELS.

\*CONTRACTOR TO UTILIZE NEXT AVAILABLE IN SEQUENCE SINGLE BREAKER POSITION FOR GENERATOR, BATTERY CHARGER, BATTERY HEATER AND BLOCK HEATER

NOTE:  
1. IF EXISTING CONSTRUCTION VARIES FROM THIS DETAIL, AN EQUAL 3-HR U.L. PENETRATION APPROPRIATE FOR THE EXISTING WALL TYPE SHALL BE CONSTRUCTED  
2. GC SHALL USE NON-SHRINKING CAULK TO WEATHERSEAL ALL PENETRATIONS INTO OR THRU SHELTER WALL.

Type GR  
CABLE TAP TO TOP OF GROUND ROD

Type GT  
THROUGH CABLE TO TOP OF GROUND ROD.

Type GY  
THROUGH CABLE TO SIDE OF GROUND ROD

Type HS  
HORIZONTAL CABLE TAP TO HORIZONTAL STEEL SURFACE OR PIPE. CABLE OFF SURFACE.

Type TA  
TEE OF HORIZONTAL RUN AND TAP CABLES.

Type VN  
HORIZONTAL CABLE TAP TO VERTICAL STEEL SURFACE OR THE SIDE OF HORIZONTAL PIPE

Type VS  
CABLE TAP DOWN AT 45° TO VERTICAL STEEL SURFACE OR SIDE OF HORIZONTAL OR VERTICAL PIPE.

Type VV  
THROUGH VERTICAL CABLE TO VERTICAL STEEL SURFACE OR TO THE SIDE OF EITHER HORIZONTAL OR VERTICAL PIPE

Type GR  
CABLE TAP TO TOP OF GROUND ROD

U.L. SYSTEM NO. C-AJ-1150  
CONDUIT THROUGH BEARING WALL SIMILAR TO U.L. DESIGN NO. U902  
F RATING = 3 HR  
T RATING = 0 HR

- FLOOR OR WALL ASSEMBLY : MINIMUM 4-1/2" THICK REINFORCED LIGHTWEIGHT OR NORMAL WEIGHT (100-150 PCF) CONCRETE. WALL MAY ALSO BE CONSTRUCTED OF ANY UL CLASSIFIED CONCRETE BLOCKS\*. MAX DIAMETER OF OPENING IS 4". SEE CONCRETE BLOCKS 9CATZ) CATEGORY IN THE FIRE RESISTANCE DIRECTORY FOR NAMES OF MANUFACTURERS.
- THROUGH PENETRATIONS : ONE METALLIC PIPE OR CONDUIT TO BE RIGIDLY SUPPORTED ON BOTH SIDES OF FLOOR OR WALL ASSEMBLY. THE ANNULAR SPACE SHALL BE MINIMUM 0". (POINT CONTACT) TO MAXIMUM 1-3/8". THE FOLLOWING TYPES AND SIZES OF METALLIC PIPES OR CONDUITS MAY BE USED:  
A. STEEL PIPE-NOMINAL 6" DIAMETER (OR SMALLER) SCHEDULE 40 (OR HEAVIER) STEEL PIPE.  
B. IRON PIPE-NOMINAL 6" DIAMETER (OR SMALLER) CAST OR DUCTILE IRON PIPE.  
C. CONDUIT - NOMINAL 4" DIAMETER (OR SMALLER) STEEL ELECTRICAL METALLIC TUBING OR NOMINAL 3-1/2" DIAMETER (OR SMALLER) STEEL CONDUIT.
- PACKING MATERIAL: MINIMUM 6" THICKNESS OF MIN 4.0 PCF MINERAL WOOL BATTING INSULATION FIRMLY PACKED INTO OPENING AS A PERMANENT FORM. PACKING MATERIAL TO BE RECESSED FROM TOP SURFACE OF FLOOR OR FROM BOTH SURFACES OF WALL AS REQUIRED TO ACCOMMODATE THE REQUIRED THICKNESS OF FILL MATERIAL.
- FILL, VOID, OR CAVITY MATERIAL\*: SEALANT: MINIMUM 1/4" THICKNESS OF FILL MATERIAL APPLIED WITHIN THE ANNULUS, FLUSH WITH TOP SURFACE OF FLOOR AND WITH BOTH SURFACES OF WALL. AT THE POINT CONTACT LOCATION BETWEEN PIPE AND CONCRETE, A MINIMUM 1/2" DIAMETER BEAD OF FILL MATERIAL SHALL BE APPLIED AT THE CONCRETE/PIPE INTERFACE ON THE TOP SURFACE OF FLOOR AND ON BOTH SURFACES OF WALL. W RATING APPLIES ONLY WHEN CP601S OR CP604 SEALANT IS USED.

HILTI CONSTRUCTION CHEMICALS, DIV OF HILTI INC. : CP601S, CP604, CP606, OR FS-ONE SEALANT.

\* BEARING THE UL CLASSIFICATION MARK

OUTER WALL PENETRATION DETAIL (IF APPLICABLE)

SCALE: NTS

CADWELD DETAILS

SCALE: NTS



**RAMAKER**  
employee-owned  
(608) 643-4100    www.ramaker.com

PREPARED FOR:



**at&t**  
Mobility

CONSULTANT:  
**GENERAL DYNAMICS**  
Information Technology, Inc.

GENERAL DYNAMICS  
101 STATION DR  
WESTWOOD, MA 02090

Certification & Seal:  
I hereby certify that this plan, specification, or report was prepared by me or under my direct supervision and that I am a duly Licensed Professional Engineer under the laws of the State of Connecticut.



Signature:  Date: 8/17/2023


MARK	DATE	DESCRIPTION
ISSUE	FINAL	DATE ISSUED 08/17/2023

PROJECT TITLE:  
**LEDYARD COLONEL RD**  
**FA ID # 10035428**

PROJECT INFORMATION:  
889R COLONEL LEDYARD HIGHWAY  
LEDYARD, CT 06339

SHEET TITLE:  
**PANEL AND PENETRATION**  
**DETAILS**

SCALE: NONE

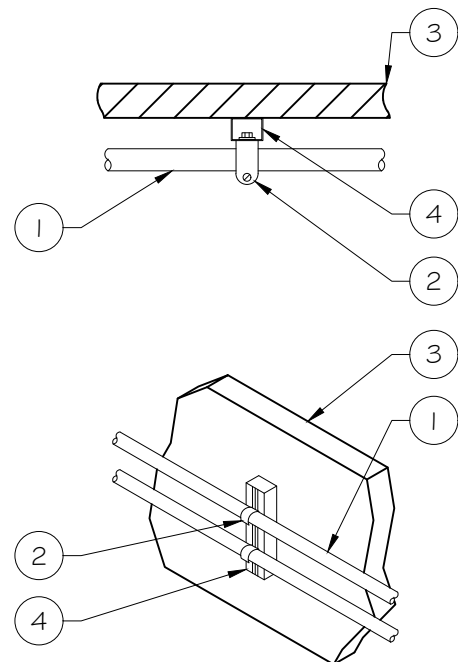
PROJECT NUMBER	57106
SHEET NUMBER	E-2



- 1 CONDUIT (TYP)
- 2 BUTTERFLY CLAMP AS REQUIRED
- 3 EXISTING WALL/CEILING
- 4 VERTICAL "UNISTRUT" P I 000 T' SERIES  
LENGTH BASED ON NUMBER OF  
CONDUIT TO BE MOUNTED

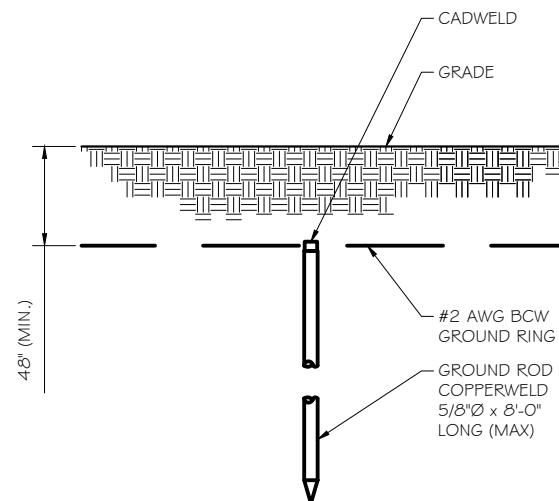
WALL CONSTRUCTION TYPE	USE
HOLLOW	3/8" DIA. TOGGLE BOLT
HOLLOW, AT STUD	3/8" DIA. LAG SCREW
CONCRETE BLOCK (HOLLOW)	3/8" DIA. HILTI HY-20 WITH SCREEN, MINIMUM EMBEDMENT 2- 1/2"
CONCRETE (SOLID)	3/8" DIA. HILTI HY-1 50 WITH SCREEN, MINIMUM EMBEDMENT 2- 1/2"
NOTE: USE GALVANIZED OR STAINLESS STEEL HARDWARE FOR WALL MOUNT & CONNECTIONS OF CHANNELS SPACE UNITS @ 5'-0" O.C. LENGTH OF RUN	

NOTE: USE GALVANIZED OR STAINLESS STEEL HARDWARE FOR WALL MOUNT & CONNECTIONS OF CHANNELS SPACE UNITS @ 5'-0" O.C. LENGTH OF RUN



## CONDUIT WALL MOUNT

SCALE: NTS



NOTE:

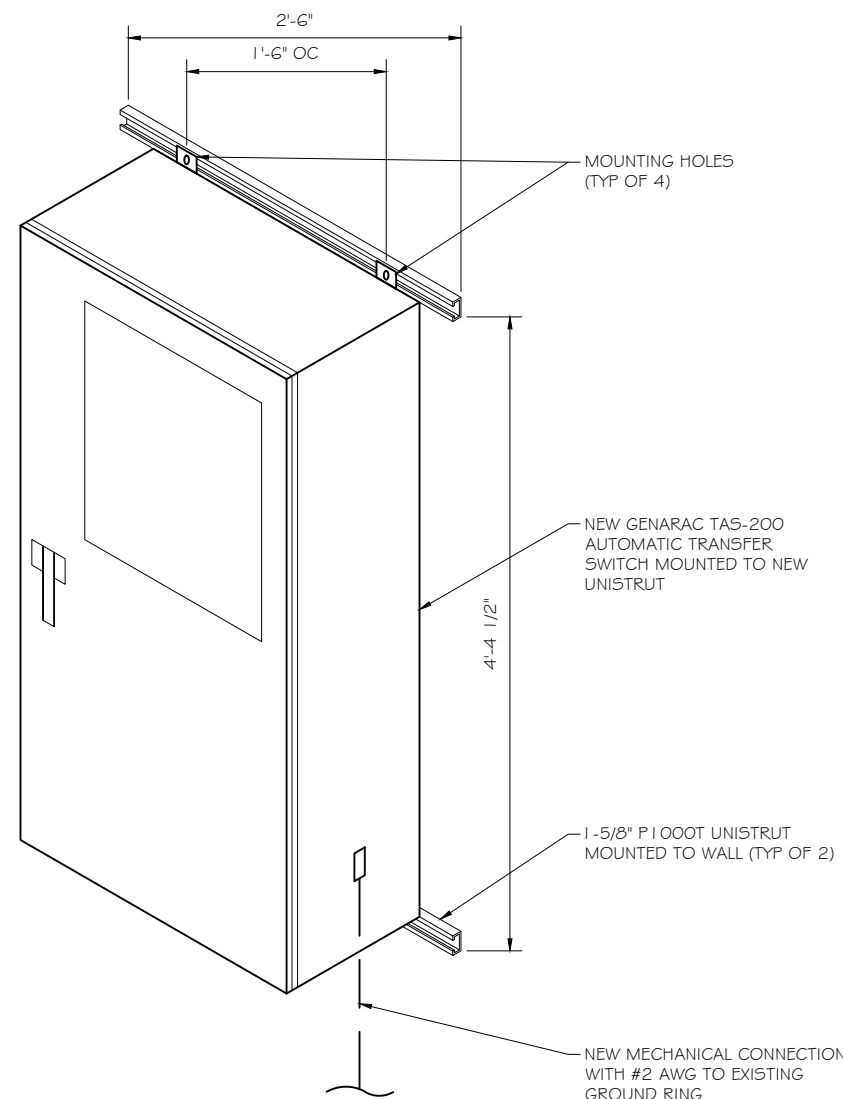
1. GROUND RODS MAY BE:
  - COPPER CLAD STEEL
  - SOLID COPPER
2. GROUND RODS SHALL HAVE A MAXIMUM SPACING TWICE THE LENGTH OF ROD
3. SEE RESISTIVITY REPORT FOR VERIFICATION AS AVAILABLE
4. A LARGER CONDUCTOR SHALL BE REQUIRED IN AREAS HIGHLY PRONE TO LIGHTNING AND/OR AREAS WITH HIGHLY ACIDIC SOIL
5. GROUND RODS INSTALLED WITHIN CLOSE PROXIMITY TO TOWER OR WHEN SOIL IS AT OR BELOW 2,000 OHM-CM, SHALL BE GALVANIZED TO PREVENT GALVANIC CORROSION OF TOWER, (SEE ANSI/TIA-EIA-222-G)
6. PROVIDE (1) GROUND LEAD TO EACH SIDE OF THE GENERATOR

GROUND ROD DETAIL  
SCALE: NTS

WALL CONSTRUCTION TYPE	USE
HOLLOW	3/8" DIA. TOGGLE BOLT
HOLLOW, AT STUD	3/8" DIA. LAG SCREW
CONCRETE BLOCK (HOLLOW)	7/16" DIA. HILTI HY-20 WITH SCREEN MINIMUM EMBEDMENT 2-1/2"
CONCRETE (SOLID)	7/16" DIA. HILTI HY-150 WITH SCREEN MINIMUM EMBEDMENT 2-1/2"

NOTE:

1. USE GALVANIZED OR STAINLESS STEEL HARDWARE FOR WALL MOUNT AND CONNECTION OF CHANNELS
2. GC SHALL USE NON-SHRINKING CAULK TO WEATHER SEAL ALL PENETRATIONS INTO OR THROUGH SHELTER WALL



GENERAC ATS MOUNTING DETAIL  
SCALE: NTS



**RAMAKER**  
employee-owned

(608) 643-4100 [www.ramaker.com](http://www.ramaker.com)

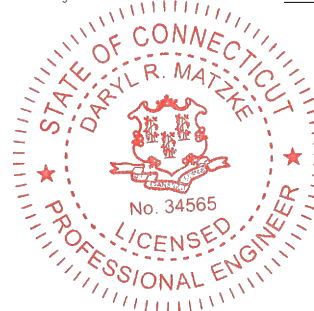
PREPARED FOR:



CONSULTANT:  
**GENERAL DYNAMICS**  
Information Technology, Inc.

GENERAL DYNAMICS  
101 STATION DR  
WESTWOOD, MA 02090

Certification & Seal:  
I hereby certify that this plan, specification, or report was prepared by me or under my direct supervision and that I am a duly licensed Professional Engineer under the laws of the State of Connecticut.



Signature: \_\_\_\_\_ Date: 8/17/2023


MARK	DATE	DESCRIPTION
ISSUE PHASE	FINAL	DATE ISSUED 08/17/2023

PROJECT TITLE

LEDYARD COLONEL RD  
FA ID # 10035428

PROJECT INFORMATION:  
889R COLONEL LEDYARD HIGHWAY  
LEDYARD, CT 06339

SHEET TITLE:

## ATS, CONDUIT & GROUND ROD DETAILS

SCALE: NONE

PROJECT NUMBER	57106
SHEET NUMBER	E-3

SD030 | 2.2L | 30 kW

INDUSTRIAL DIESEL GENERATOR SET

EPA Certified Stationary Emergency



Standby Power Rating  
30 kW, 38 kVA, 60 Hz

Prime Power Rating\*  
27 kW, 34 kVA, 60 Hz



\*EPA Certified Prime ratings are not available in the US or its Territories

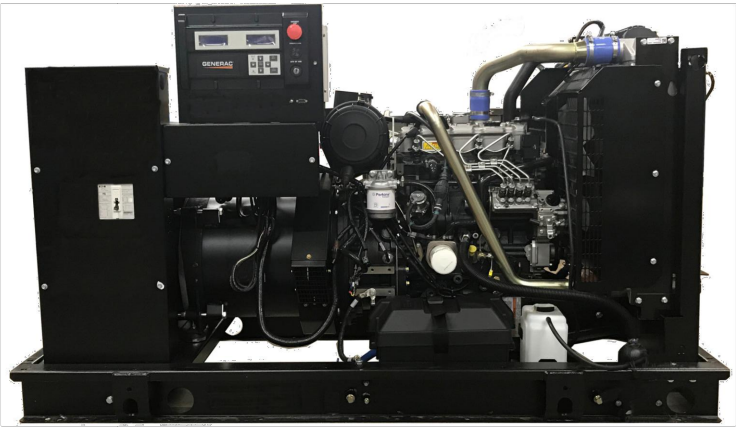


Image used for illustration purposes only

Codes and Standards

Not all codes and standards apply to all configurations. Contact factory for details.

		UL2200, UL508, UL489, UL142
		SAE J1349
		NFPA 37, 70, 99, 110
		ISO 3046, 7637, 8528, 9001
		ANSI C62.41
		NEC700, 701, 702, 708
		NEMA ICS10, MG1, 250, ICS6, AB1
		CSA C22.2
		BS5514 and DIN 6271

Powering Ahead

For over 50 years, Generac has provided innovative design and superior manufacturing.

Generac ensures superior quality by designing and manufacturing most of its generator components, including alternators, enclosures and base tanks, control systems and communications software.

Generac gensets utilize a wide variety of options, configurations and arrangements, allowing us to meet the standby power needs of practically every application.

Generac searched globally to ensure the most reliable engines power our generators. We choose only engines that have already been proven in heavy-duty industrial applications under adverse conditions.

Generac is committed to ensuring our customers' service support continues after their generator purchase.

SD030 | 2.2L | 30 kW

INDUSTRIAL DIESEL GENERATOR SET

EPA Certified Stationary Emergency



STANDARD FEATURES

ENGINE SYSTEM

- Oil Drain Extension
- Air Cleaner
- Fan Guard
- Stainless Steel Flexible Exhaust Connection
- Factory Filled Oil and Coolant
- Radiator Duct Adapter (Open Set Only)
- Critical Silencer (Enclosed Unit Only)
- Engine Coolant Heater

Fuel System

- Fuel Lockoff Solenoid
- Primary Fuel Filter

Cooling System

- Closed Coolant Recovery System
- UV/Ozone Resistant Hoses
- Factory-Installed Radiator
- Radiator Drain Extension
- 50/50 Ethylene Glycol Antifreeze

Electrical System

- Battery Charging Alternator
- Battery Cables
- Battery Tray
- Rubber-Booted Engine Electrical Connections
- Solenoid Activated Starter Motor

ALTERNATOR SYSTEM

- UL2200 GENprotect™
- Class H Insulation Material
- 2/3 Pitch
- Skewed Stator
- Brushless Excitation
- Sealed Bearing
- Rotor Dynamically Spin Balanced
- Amortisseur Winding (3-Phase Only)
- Full Load Capacity Alternator
- Protective Thermal Switch

GENERATOR SET

- Internal Genset Vibration Isolation
- Separation of Circuits - High/Low Voltage
- Separation of Circuits - Multiple Breakers
- Wrapped Exhaust Piping
- Standard Factory Testing
- 2 Year Limited Warranty (Standby Rated Units)
- 1 Year Limited Warranty (Prime Rated Units)
- Silencer Mounted in the Discharge Hood (Enclosed Unit Only)

ENCLOSURE (If Selected)

- Rust-Proof Fasteners with Nylon Washers to Protect Finish
- High Performance Sound-Absorbing Material (Sound Attenuation Enclosures)
- Gasketed Doors
- Stamped Air-Intake Louvers
- Upward Facing Discharge Hoods (Radiator and Exhaust)
- Stainless Steel Lift Off Door Hinges
- Stainless Steel Lockable Handles
- RhinoCoat™ - Textured Polyester Powder Coat Paint

FUEL TANKS (If Selected)

- UL 142/ULC S601
- Double Wall
- Normal and Emergency Vents
- Sloped Top
- Sloped Bottom
- Factory Pressure Tested
- Rupture Basin Alarm
- Fuel Level
- Check Valve In Supply and Return Lines
- RhinoCoat™ - Textured Polyester Powder Coat Paint
- Stainless Steel Hardware

CONTROL SYSTEM



Digital H Control Panel- Dual 4x20 Display

Program Functions

- Programmable Crank Limiter
- 7-Day Programmable Exerciser
- Special Applications Programmable Logic Controller
- RS-232/485 Communications
- All Phase Sensing Digital Voltage Regulator
- 2-Wire Start Capability
- Date/Time Fault History (Event Log)
- Isochronous Governor Control
- Waterproof/Sealed Connectors

- Audible Alarms and Shutdowns
- Not in Auto (Flashing Light)
- Auto/Off/Manual Switch
- E-Stop (Red Mushroom-Type)
- NFPA110 Level I and II (Programmable)
- Customizable Alarms, Warnings, and Events
- Modbus® Protocol
- Predictive Maintenance Algorithm
- Sealed Boards
- Password Parameter Adjustment Protection
- Single Point Ground
- 16 Channel Remote Trending
- 0.2 msec High Speed Remote Trending
- Alarm Information Automatically Annunciated on the Display

Full System Status Display

- Power Output (kW)
- Power Factor
- kW Hours, Total, and Last Run
- Real/Reactive/Apparent Power
- All Phase AC Voltage
- All Phase Currents

- Oil Pressure
- Coolant Temperature
- Coolant Level
- Engine Speed
- Battery Voltage
- Frequency

Alarms and Warnings

- Oil Pressure
- Coolant Temperature
- Coolant Level
- Engine Overspeed
- Battery Voltage
- Alarms and Warnings Time and Date Stamped
- Snap Shots of Key Operation Parameters During Alarms and Warnings
- Alarms and Warnings Spelled Out (No Alarm Codes)

RAMAKER

employee-owned

(608) 643-4100    www.ramaker.com

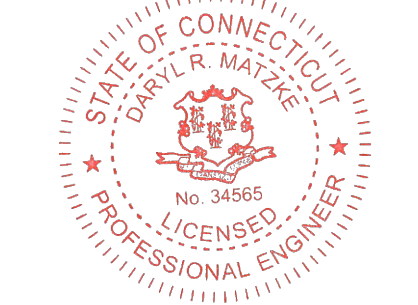
PREPARED FOR:



CONSULTANT:  
**GENERAL DYNAMICS**  
Information Technology, Inc.

GENERAL DYNAMICS  
101 STATION DR  
WESTWOOD, MA 02090

Certification & Seal:  
I hereby certify that this plan, specification, or report was prepared by me or under my direct supervision and that I am a duly Licensed Professional Engineer under the laws of the State of Connecticut.



Signature: Date: 8/17/2023


MARK	DATE	DESCRIPTION
ISSUE	FINAL	
PHASE		

PROJECT TITLE:

LEDYARD COLONEL RD  
FA ID # 10035428

PROJECT INFORMATION:  
889R COLONEL LEDYARD HIGHWAY  
LEDYARD, CT 06339

SHEET TITLE:  
GENERAC 30KW GENERATOR  
SPECIFICATIONS

SCALE: NONE

PROJECT NUMBER	57106
SHEET NUMBER	E-4



SD030 | 2.2L | 30 kW

INDUSTRIAL DIESEL GENERATOR SET

EPA Certified Stationary Emergency

CONFIGURABLE OPTIONS

ENGINE SYSTEM

- Oil Heater
- Critical Silencer (Open Set Only)
- Radiator Stone Guard
- Level 1 Fan and Belt Guards (Open Set Only)

FUEL SYSTEM

- NPT Flexible Fuel Line

ELECTRICAL SYSTEM

- 10A UL Listed Battery Charger
- Battery Warmer

ALTERNATOR SYSTEM

- Alternator Upsizing
- Anti-Condensation Heater
- Tropical Coating
- Permanent Magnet Excitation

GENERATOR SET

- Extended Factory Testing
- 8 Position Load Center
- Pad Vibration Isolation

ENGINEERED OPTIONS

ENGINE SYSTEM

- Coolant Heater Isolation Ball Valves
- Fluid Containment Pan

CONTROL SYSTEM

- Spare Inputs (x4) / Outputs (x4)
- Battery Disconnect Switch

CIRCUIT BREAKER OPTIONS

- Main Line Circuit Breaker
- 2nd Main Line Circuit Breaker
- Shunt Trip and Auxiliary Contact
- Electronic Trip Breakers

ENCLOSURE

- Weather Protected Enclosure
- Level 1 Sound Attenuation
- Level 2 Sound Attenuation
- Level 2 Sound Attenuation with Motorized Dampers
- Steel Enclosure
- Aluminum Enclosure
- Up to 200 MPH Wind Load Rating (Contact Factory for Availability)
- AC/DC Enclosure Lighting Kit
- Door Alarm Switch
- Enclosure Heater
- Damper Alarm Contacts

WARRANTY (Standby Gensets Only)

- 2 Year Extended Limited Warranty
- 5 Year Limited Warranty
- 5 Year Extended Limited Warranty
- 7 Year Extended Limited Warranty
- 10 Year Extended Limited Warranty

ALTERNATOR SYSTEM

- 3rd Breaker System

GENERATOR SET

- Special Testing

GENERAC | INDUSTRIAL POWER

CONTROL SYSTEM

- NFPA 110 Compliant 21-Light Remote Annunciator
- Remote Relay Assembly (8 or 16)
- Oil Temperature Indication and Alarm
- Remote E-Stop (Break Glass-Type, Surface Mount)
- Remote E-Stop (Red Mushroom-Type, Surface Mount)
- Remote E-Stop (Red Mushroom-Type, Flush Mount)
- 100 dB Alarm Horn
- Ground Fault Annunciation
- 120V GFCI and 240V Outlets
- Remote Communication - Modern
- 10A Engine Run Relay

FUEL TANKS (Size On Last Page)

- 8 in (203.2 mm) Fill Extension
- 13 in (330.2 mm) Fill Extension
- 19 in (482.6 mm) Fill Extension
- Overfill Protection Valve
- 5 Gallon Spill Box Return Hose
- 5 Gallon Spill Box
- Tank Risers
- Fuel Level Switch and Alarm
- 12" Vent System
- Fire Rated Stainless Steel Fuel Hose

FUEL TANKS

- UL2085 Tank
- Stainless Steel Tanks
- Special Fuel Tanks
- Vent Extensions

SD030 | 2.2L | 30 kW

INDUSTRIAL DIESEL GENERATOR SET

EPA Certified Stationary Emergency

APPLICATION AND ENGINEERING DATA

ENGINE SPECIFICATIONS

General

Make	Perkins
EPA Emissions Compliance	Stationary Emergency
EPA Emissions Reference	See Emission Data Sheet
Cylinder #	4
Type	In-Line
Displacement - in <sup>3</sup> (L)	135 (2.22)
Bore - in (mm)	3.3 (84)
Stroke - in (mm)	3.9 (100)
Compression Ratio	23.3:1
Intake Air Method	Turbocharged
Cylinder Head	Cast Iron
Piston Type	Aluminum
Crankshaft Type	Forged Steel

Engine Governing

Governor	Electronic Isochronous
Frequency Regulation (Steady State)	±0.5%

Lubrication System

Oil Pump Type	Gear
Oil Filter Type	Full-Flow
Crankcase Capacity - qt (L)	11.2 (10.6)

Cooling System

Cooling System Type	Closed Recovery
Water Pump Type	Pre-Lubed, Self Sealing
Fan Type	Pusher
Fan Speed - RPM	1,980
Fan Diameter - in (mm)	18 (457)

Fuel System

Fuel Type	Ultra Low Sulfur Diesel Fuel #2
Fuel Specifications	ASTM
Fuel Filtering (Microns)	5
Fuel Inject Pump	Distribution Injection Pump
Fuel Pump Type	Engine Driven Gear
Injector Type	Mechanical
Fuel Supply Line - in (mm)	0.31 (7.9) ID
Fuel Return Line - in (mm)	0.2 (4.8) ID

Engine Electrical System

System Voltage	12 VDC
Battery Charger Alternator	Standard
Battery Size	See Battery Index 0161970SBY
Battery Voltage	12 VDC
Ground Polarity	Negative

ALTERNATOR SPECIFICATIONS

Standard Model	K0035124Y21
Poles	4
Field Type	Revolving
Insulation Class - Rotor	H
Insulation Class - Stator	H
Total Harmonic Distortion	<5% (3-Phase)
Telephone Interference Factor (TIF)	< 50

Standard Excitation	Brushless
Bearings	Single Sealed
Coupling	Direct via Flexible Disc
Load Capacity - Standby	100%
Prototype Short Circuit Test	Yes
Voltage Regulator Type	Digital
Number of Sensed Phases	All
Regulation Accuracy (Steady State)	±0.25%

GENERAC | INDUSTRIAL POWER



RAMAKER

employee-owned

(608) 643-4100    www.ramaker.com

PREPARED FOR:



CONSULTANT:

**GENERAL DYNAMICS**

Information Technology, Inc.

GENERAL DYNAMICS

101 STATION DR

WESTWOOD, MA 02090

Certification # Seal:

I hereby certify that this plan, specification, or report was prepared by me or under my direct supervision and that I am a duly Licensed Professional Engineer under the laws of the State of Connecticut.




MARK	DATE	DESCRIPTION
ISSUE PHASE	FINAL	DATE ISSUED 08/17/2023

PROJECT TITLE:

LEDYARD COLONEL RD

FA ID # 10035428

PROJECT INFORMATION:

889R COLONEL LEDYARD HIGHWAY

LEDYARD, CT 06339

SHEET TITLE:

GENERAC 30KW GENERATOR SPECIFICATIONS

SCALE: NONE

PROJECT NUMBER	57106
SHEET NUMBER	E-4.1

SPEC SHEET

3 of 6

SPEC SHEET

4 of 6

SD030 | 2.2L | 30 kW  
INDUSTRIAL DIESEL GENERATOR SET

EPA Certified Stationary Emergency

OPERATING DATA

POWER RATINGS

Standby		
Single-Phase 120/240 VAC @1.0pf	30 kW	Amps: 125
Three-Phase 120/208 VAC @0.8pf	30 kW	Amps: 104
Three-Phase 120/240 VAC @0.8pf	30 kW	Amps: 90
Three-Phase 277/480 VAC @0.8pf	30 kW	Amps: 45
Three-Phase 346/600 VAC @0.8pf	30 kW	Amps: 36

MOTOR STARTING CAPABILITIES (skVA)

skVA vs. Voltage Dip			
277/480 VAC	30%	208/240 VAC	30%
K0035124Y21	61	K0035124Y21	46
K0040124Y21	76	K0040124Y21	58
K0050124Y21	98	K0050124Y21	75

FUEL CONSUMPTION RATES\*

Fuel Pump Lift- ft (m)	Diesel - gph (Lph)	
	Percent Load	Standby
3 (1)	25%	1.0 (3.7)
	50%	1.4 (5.2)
	75%	2.0 (7.5)
Total Fuel Pump Flow (Combustion + Return) - gph (Lph)	100%	2.8 (10.5)
	16.6 (63)	

\* Fuel supply installation must accommodate fuel consumption rates at 100% load.

COOLING

Standby		
Coolant Flow	gpm (Lpm)	14.9 (56.2)
Coolant System Capacity	gal (L)	2.5 (9.5)
Heat Rejection to Coolant	BTU/hr (kW)	128,638 (136)
Inlet Air	scfm (m³/hr)	2,800 (4,757)
Maximum Operating Ambient Temperature	°F (°C)	122 (50)
Maximum Operating Ambient Temperature (Before Derate)	See Bulletin No. 0199280SSD	
Maximum Radiator Backpressure	in H <sub>2</sub> O (kPa)	0.5 (0.12)

COMBUSTION AIR REQUIREMENTS

Standby
Flow at Rated Power scfm (m³/min)
88 (2.5)

ENGINE

Standby		
Rated Engine Speed	RPM	1,800
Horsepower at Rated kW**	hp	49
Piston Speed	ft/min (m/min)	1,181 (360)
BMEP	psi (kPa)	159 (1,096)

\*\* Refer to "Emissions Data Sheet" for maximum bHP for EPA and SCAQMD permitting purposes.

Deration – Operational characteristics consider maximum ambient conditions. Derate factors may apply under atypical site conditions. Please contact a Generac Power Systems Industrial Dealer for additional details. All performance ratings in accordance with ISO3046, BS5514, ISO8528, and DIN6271 standards. Standby - See Bulletin 0187500SSB Prime - See Bulletin 0187510SSB

EXHAUST

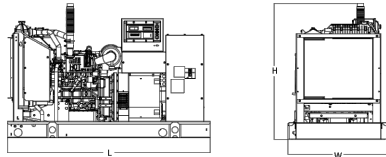
Standby		
Exhaust Flow (Rated Output)	scfm (m³/min)	296.6 (8.4)
Max. Allowable Backpressure (Post Turbocharger)	inHg (kPa)	1.5 (5.1)
Exhaust Temp (Rated Output)	°F (°C)	892 (478)

GENERAC INDUSTRIAL POWER

SD030 | 2.2L | 30 kW  
INDUSTRIAL DIESEL GENERATOR SET

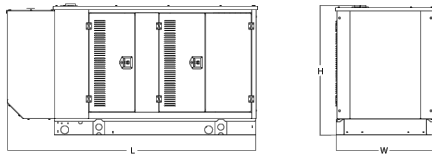
EPA Certified Stationary Emergency

DIMENSIONS AND WEIGHTS\*



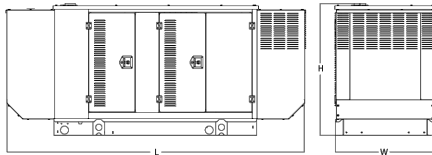
OPEN SET (Includes Exhaust Flex)

Run Time - Hours	Usable Capacity - Gal (L)	L x W x H - in (mm)	Weight - lbs (kg)	
			Steel	Aluminum
No Tank	-	76.0 (1,930) x 37.4 (950) x 44.8 (1,138)	1,641 (745)	
19	54 (204)	76.0 (1,930) x 37.4 (950) x 57.8 (1,468)	2,121 (963)	
47	132 (501)	76.0 (1,930) x 37.4 (950) x 69.8 (1,773)	2,351 (1,067)	
75	211 (799)	76.0 (1,930) x 37.4 (950) x 81.8 (2,078)	2,560 (1,162)	
107	300 (1,136)	92.9 (2,360) x 37.4 (950) x 81.8 (2,078)	2,623 (1,190)	



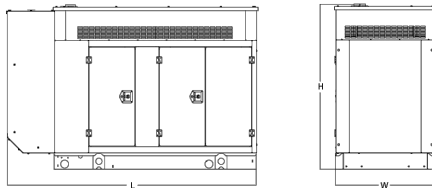
WEATHER PROTECTED ENCLOSURE

Run Time - Hours	Usable Capacity - Gal (L)	L x W x H - in (mm)	Weight - lbs (kg)	
			Enclosure Only	
			Steel	Aluminum
No Tank	-	94.8 (2,409) x 38.0 (965) x 49.5 (1,258)		
19	54 (204)	94.8 (2,409) x 38.0 (965) x 62.5 (1,588)	372 (170)	241 (110)
47	132 (501)	94.8 (2,409) x 38.0 (965) x 74.5 (1,893)		
75	211 (799)	94.8 (2,409) x 38.0 (965) x 86.5 (2,198)		
107	300 (1,136)	94.8 (2,409) x 38.0 (965) x 86.5 (2,198)		



LEVEL 1 ACOUSTIC ENCLOSURE

Run Time - Hours	Usable Capacity - Gal (L)	L x W x H - in (mm)	Weight - lbs (kg)	
			Enclosure Only	
			Steel	Aluminum
No Tank	-	112.5 (2,857) x 38.0 (965) x 49.5 (1,258)		
19	54 (204)	112.5 (2,857) x 38.0 (965) x 62.5 (1,582)	505 (230)	338 (154)
47	132 (501)	112.5 (2,857) x 38.0 (965) x 74.5 (1,893)		
75	211 (799)	112.5 (2,857) x 38.0 (965) x 86.5 (2,198)		
107	300 (1,136)	112.5 (2,857) x 38.0 (965) x 86.5 (2,198)		



LEVEL 2 ACOUSTIC ENCLOSURE

Run Time - Hours	Usable Capacity - Gal (L)	L x W x H - in (mm)	Weight - lbs (kg)	
			Enclosure Only	
			Steel	Aluminum
No Tank	-	94.8 (2,407) x 38.0 (965) x 61.1 (1,551)		
19	54 (204)	94.8 (2,407) x 38.0 (965) x 74.1 (1,881)	510 (232)	341 (155)
47	132 (501)	94.8 (2,407) x 38.0 (965) x 86.1 (2,186)		
75	211 (799)	94.8 (2,407) x 38.0 (965) x 98.1 (2,491)		
107	300 (1,136)	94.8 (2,407) x 38.0 (965) x 98.1 (2,491)		

\* All measurements are approximate and for estimation purposes only. Specification characteristics may change without notice. Please contact a Generac Power Systems Industrial Dealer for detailed installation drawings.

Generac Power Systems, Inc. | P.O. Box 8 | Waukesha, WI 53189  
P: (262) 544-4811 ©2018 Generac Power Systems, Inc. All rights reserved. All specifications are subject to change without notice.

Part No. 10000024842  
Rev. B 08/27/18

SPEC SHEET

5 of 6



RAMAKER  
employee-owned  
(608) 643-4100 www.ramaker.com

PREPARED FOR:

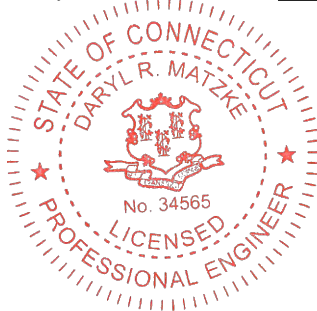


CONSULTANT:  
**GENERAL DYNAMICS**  
Information Technology, Inc.

GENERAL DYNAMICS  
101 STATION DR  
WESTWOOD, MA 02090

Certification & Seal:

I hereby certify that this plan, specification, or report was prepared by me or under my direct supervision and that I am a duly Licensed Professional Engineer under the laws of the State of Connecticut.



Signature: Date: 8/17/2023


MARK	DATE	DESCRIPTION
ISSUE	FINAL	
PHASE		
		DATE ISSUED 08/17/2023

PROJECT TITLE:

LEDYARD COLONEL RD  
FA ID # 10035428

PROJECT INFORMATION:  
889R COLONEL LEDYARD HIGHWAY  
LEDYARD, CT 06339

SHEET TITLE:

GENERAC 30KW GENERATOR  
SPECIFICATIONS

SCALE: NONE

PROJECT NUMBER	57106
SHEET NUMBER	E-4.2

SPEC SHEET

6 of 6

TTS Series  
Switches

200 Amps  
600 VAC

GENERAC®

INDUSTRIAL  
POWER

TAS200

200A Automatic Transfer Switch

TAS200  
TAS200

1 of 3 2 of 3

The Generac TAS200 Automatic Transfer Switch

- Flexibility for multiple application installations
- Multiple generator support with 3 source panel
- Designed with a 6 inch touch screen controller for improved user interface
- Camlock functionality for mobile generator sources



Image used for illustration purposes only.

Features

- STEEL CONSTRUCTION
- NEMA 3R ENCLOSURE WITH HINGED “PADLOCKING” DOORS
- STAINLESS STEEL HARDWARE
- CAMLOCK “QUICK CONNECT” CAPABILITY
- OPERATIONAL STATUS VIEW VIA 6 INCH TOUCH SCREEN
- TEST FUNCTION - FAST TEST & NORMAL TEST
- UL1008 LISTED - FOR EMERGENCY SYSTEMS

Optional Features

- EXTENDED WARRANTY
- THREE-PHASE VOLTAGE CONFIGURATIONS

Codes and Standards

Generac products are designed to the following standards:



UL1008,  
UL508,  
UL50,  
CSA C22.2 No. 178



NEC 700, 701 and 702



NEMA 250

Application and Engineering Data

Cabinet Specifications	
Dimensions	24"W x 12"D x 48"H
Weight	210 lbs.
Construction	Single Chamber with Main Door
	Steel
	UL Type / NEMA 3R Rated
	Powder Coat Finish for Corrosion Resistance
	C-UL-US Listed - Automatic Transfer Switch
	Stainless Steel Hardware
Mounting Options	3-Point Latching System with Pad-Lockable Handles
	Wall
Installed	H-frame
	Pre-wired alarm terminal strip

Electrical Specifications	
Voltage/Phase/Amps	120/240 Single-Phase, 200A 120/208 3-Phase, 200A 120/240 3-Phase, 200A
Breaker	Eaton 200 amp Utility Breaker
	Eaton 200 amp Generator Breaker
Maximum RMS Symmetrical Fault Current - Amps	25k AIC Rated
Protective Device Continuous Rating (Max) Amp	200
Input to Generator	350MCM - #6 AWG
Output to Site	350MCM - #6 AWG
Generator Annunciator Connector	Deutsch DTM04-12PA-L012
Alarm Terminal Board	Generator Run Alarm
	Generator Fail – Shutdown Alarm
	Generator Fail – Non Shutdown Alarm
	Low Fuel Alarm
	Generator Theft Alarm
	AC Utility Fail Alarm

Camlock Component		
Camlock Component	Shipped loose for multiple installation options	
Dimensions	9" W x 9.4" D x 24.25" H	
200A Camlock Generator Connection	Single-Phase: Black L1, Red L2, White-Neutral, Green-Ground	
	3-Phase: Black L1, Red L2, Blue L3, White-Neutral, Green-Ground	
	Uses 4 CH E1016 Male Connectors	
	Mating Connector – CH E1016 Female	



RAMAKER

employee-owned

(608) 643-4100 www.ramaker.com

PREPARED FOR:

CONSULTANT:  
**GENERAL DYNAMICS**  
Information Technology, Inc.  
GENERAL DYNAMICS  
101 STATION DR  
WESTWOOD, MA 02090

Certification & Seal:  
I hereby certify that this plan, specification, or report was prepared by me or under my direct supervision and that I am a duly Licensed Professional Engineer under the laws of the State of Connecticut.

8/17/2023  
Date:

MARK	DATE	DESCRIPTION
ISSUE	FINAL	DATE ISSUED 08/17/2023
PHASE		
PROJECT TITLE:		

LEDYARD COLONEL RD  
FA ID # 10035428

PROJECT INFORMATION:  
889R COLONEL LEDYARD HIGHWAY  
LEDYARD, CT 06339

SHEET TITLE:  
GENERAC ATS SPECIFICATIONS

SCALE: NONE

PROJECT NUMBER  
57106

SHEET NUMBER  
E-5

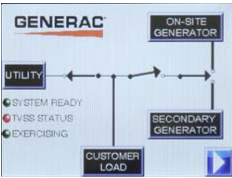


TTS Control Systems

TAS200

3 of 3

Touch Screen Interface



INDICATORS AND BUTTONS

<ul style="list-style-type: none"><li>System Ready indicator</li><li>Standby Operating indicator</li><li>Utility Available indicator</li><li>GEN/UTIL Switch Position indicator</li><li>TVSS status</li></ul>	<ul style="list-style-type: none"><li>Normal Test button</li><li>Fast Test button</li><li>Return to Normal button</li><li>Reset button</li><li>Exercising indicator</li></ul>
---	---

DETAILS SCREEN

<p><b>System Settings:</b></p> <ul style="list-style-type: none"><li>System Voltage/Phases:<ul style="list-style-type: none"><li>120/240V single phase (standard)</li><li>120/208V three phase (optional)</li><li>120/240V three phase (optional)</li></ul></li><li>Utility Fail Monitor:<ul style="list-style-type: none"><li>Under Voltage: 75-95% of nominal voltage</li><li>Over Voltage: 105%-125% of nominal voltage</li><li>Pickup (hysteresis): fixed at 5 volts</li><li>Delay time: 0-60s</li></ul></li><li>Utility Interrupt Delay: 0-60s</li><li>Return to Utility Timer: 1-30 minutes</li><li>Transfer:<ul style="list-style-type: none"><li>In-phase, or</li><li>Time-Delay-Neutral at 0.0-10.0s in 1 second increments</li></ul></li></ul>	<p><b>Exercise Settings:</b></p> <ul style="list-style-type: none"><li>Time of day</li><li>Day of week</li><li>Exercise:<ul style="list-style-type: none"><li>Exercise with/without load</li><li>Exercise once every 1, 2, or 4 weeks.</li><li>Exercise time-of-day</li><li>Exercise day of week</li><li>Exercise duration: 15-30 minutes</li></ul></li></ul>
	<p><b>Screen Settings:</b></p> <ul style="list-style-type: none"><li>Brightness &amp; Contrast button</li><li>Screen Calibration button</li><li>Startup/Clean screen</li></ul>
	<p><b>Diagnostics:</b></p> <ul style="list-style-type: none"><li>Digital I/O bits status</li><li>Voltage A/D readings</li></ul>
<p><b>Engine Settings:</b></p> <ul style="list-style-type: none"><li>Engine Warm-up timer: 0-20 minutes</li><li>Generator Load Accept:<ul style="list-style-type: none"><li>Time-Delay-Neutral at 0.0-10.0s in 1 second increments</li><li>Voltage: 85-95% of nominal</li><li>Frequency: 85-95% of nominal</li></ul></li><li>Engine Minimum Run Timer: 5-30 minutes</li><li>Engine Cooldown Timer: 0-20 minutes</li></ul>	<p><b>Mimic Diagram:</b></p> <ul style="list-style-type: none"><li>System Ready</li><li>Transfer switch position</li><li>Utility available</li><li>Standby available</li><li>Maintenance/Auto switch position</li><li>Generator source TS position</li><li>TVSS status</li></ul>



RAMAKER  
employee-owned

(608) 643-4100    www.ramaker.com

PREPARED FOR:



CONSULTANT:  
**GENERAL DYNAMICS**  
Information Technology, Inc.

GENERAL DYNAMICS  
101 STATION DR  
WESTWOOD, MA 02090

Certification & Seal:  
I hereby certify that this plan, specification, or report was prepared by me or under my direct supervision and that I am a duly Licensed Professional Engineer under the laws of the State of Connecticut.



Signature: Date: 8/17/2023


MARK	DATE	DESCRIPTION
ISSUE	FINAL	DATE ISSUED 08/17/2023

PROJECT TITLE:  
  
LEDYARD COLONEL RD  
FA ID # 10035428

PROJECT INFORMATION:  
889R COLONEL LEDYARD HIGHWAY  
LEDYARD, CT 06339

SHEET TITLE:  
  
GENERAC ATS SPECIFICATIONS

SCALE: NONE

PROJECT NUMBER	57106
SHEET NUMBER	E-5.1

# ATTACHMENT 2



# Town of Ledyard Property Summary Report

## 889A COLONEL LEDYARD HWY

<b>PARCEL ID:</b>	40-530-889-A
<b>LOCATION:</b>	889A COLONEL LEDYARD HWY
<b>OWNER NAME:</b>	RED WOLF BROADCASTING



OWNER OF RECORD
RED WOLF BROADCASTING
P O BOX 357
LEDYARD, CT 06339

<b>LIVING AREA:</b>	null	<b>ZONING:</b>	R60	<b>ACREAGE:</b>	0.00
---------------------	------	----------------	-----	-----------------	------

### SALES HISTORY

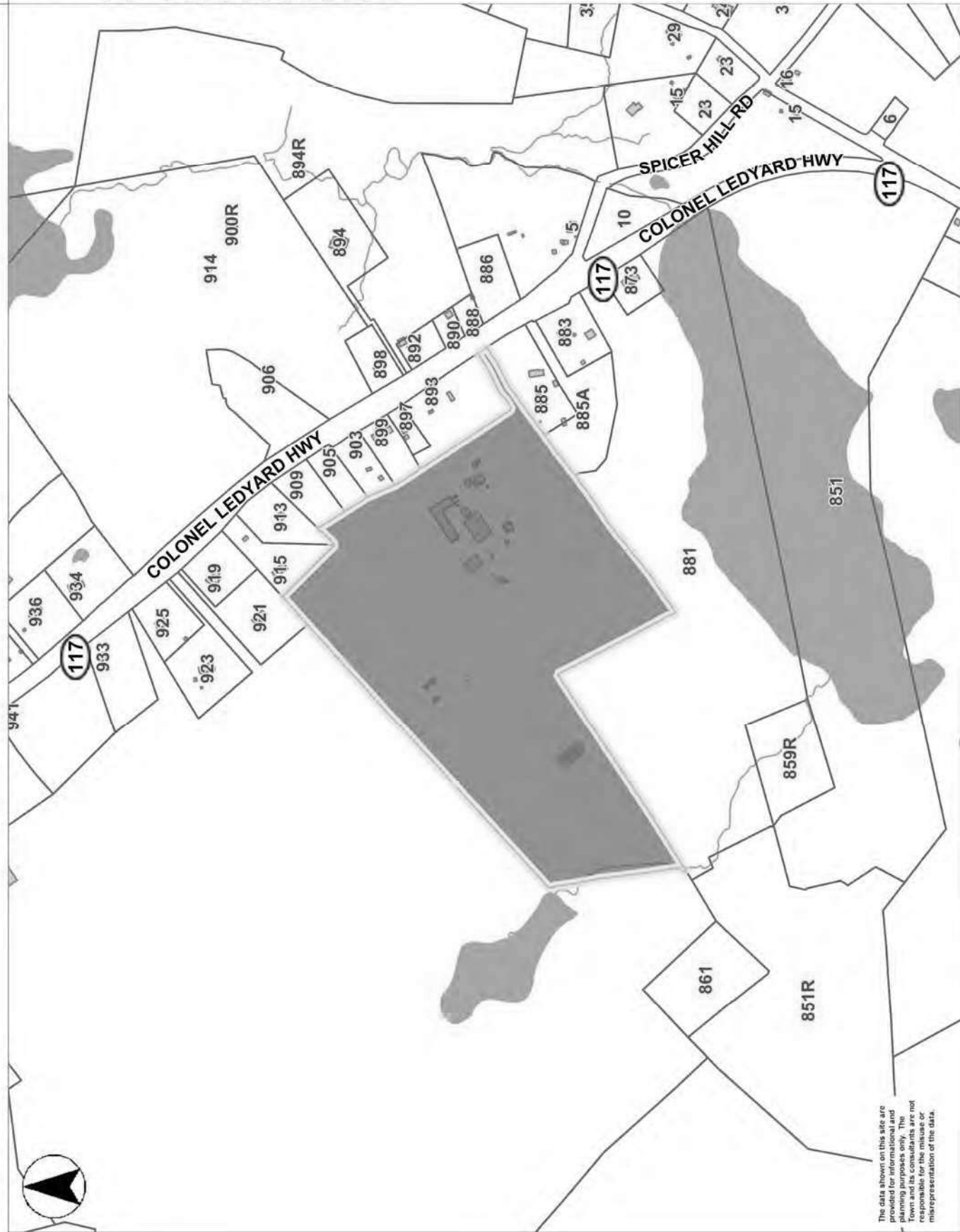
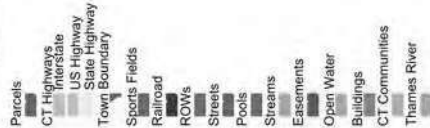
OWNER	BOOK / PAGE	SALE DATE	SALE PRICE
RED WOLF BROADCASTING			\$0.00

### CURRENT ASSESSED VALUE

<b>TOTAL:</b>	\$113,820.00	<b>IMPROVEMENTS:</b>	\$113,820.00	<b>LAND:</b>	\$0.00
---------------	--------------	----------------------	--------------	--------------	--------

### ASSESSING HISTORY

FISCAL YEAR	TOTAL VALUE	IMPROVEMENT VALUE	LAND VALUE
2018	\$113,820.00	\$113,820.00	\$0.00
2017	\$113,820.00	\$113,820.00	\$0.00
2016	\$113,820.00	\$113,820.00	\$0.00
2015	\$113,820.00	\$113,820.00	\$0.00
2014	\$113,820.00	\$113,820.00	\$0.00



Ledyard, CT MapsOnline

Printed on 07/11/2019 at 08:48 AM



PERMIT STRUCTURE

MINIMUM \$1,000 or more

50% and \$1,000 or part of  
\$1000,000 and cost State Fee

**TOWN OF LEDYARD  
PERMIT**

1. 99-338

CT23XC506

EST. COST: \$2,000

FEE: 121.80

☒ Y/N

APPL. DATE: 9/28/99

TYPE: Building

ISSUE DATE: \_\_\_\_\_

USE GROUP: \_\_\_\_\_

TYPE CONST: \_\_\_\_\_

ZONING DIST: \_\_\_\_\_

LOCATION OF JOB: 399 Rte 1 Colored Ledge Rd

OWNER: Town of Ledyard TELE. # \_\_\_\_\_

ADDRESS (IF OTHER THAN ABOVE): 741 Colored Ledge Rd

CONTRACTOR: Sprint PCS

ADDRESS: \_\_\_\_\_

TELEPHONE: \_\_\_\_\_

LICENSE NUMBER: \_\_\_\_\_

DESCRIPTION OF WORK TO BE PERFORMED: Installation of telecommunication  
equipment + antenna on existing tower owned in  
partnership by the Town of Ledyard + Rte 1 Self Broadcasting.

SIZE/LENGTH: \_\_\_\_\_

WIDTH: \_\_\_\_\_

HEIGHT: \_\_\_\_\_

BATH: \_\_\_\_\_

# BEDROOMS: \_\_\_\_\_

ATTACHED GARAGE \_\_\_\_\_

YES \_\_\_\_\_

NO \_\_\_\_\_

GARAGE UNDER \_\_\_\_\_

YES \_\_\_\_\_

NO \_\_\_\_\_

SIGNATURE OF OWNER/AGENT: [Signature] I HAVE BEEN AUTHORIZED  
BY THE OWNER TO MAKE THIS APPLICATION AS HIS AUTHORIZED AGENT.

BUILDING OFFICIAL: [Signature]

REVIEWED: [Signature] APPROVED: 9-3-99

DENIED: \_\_\_\_\_ REASON OR REASONS FOR DENIAL: \_\_\_\_\_

ZONING OFFICIAL: \_\_\_\_\_ APPROVED: \_\_\_\_\_

DENIED: \_\_\_\_\_ REASON: \_\_\_\_\_

Post-it Fax Note	7071	9-28-99	pages 1
To	Rob Stanford	Ledyard	
Co/Dept.	Sprint	Co. Building	
Phone #		Phone #	0201
Fax #	203-439-1591	Fax #	

IF PROVIDED BY THE APPLICANT FOR THE  
FAMILY AND ALL COMMERCIAL USES.

APPROVED \_\_\_\_\_ DENIED \_\_\_\_\_

APPROVED \_\_\_\_\_ DENIED \_\_\_\_\_

# ATTACHMENT 3

ORIGIN ID:GAA (301) 266-0258  
CATHERINE CONKLIN  
GENERAL DYNAMICS  
4603 KEMPER STREET

SHIP DATE: 25 JUL 23  
ACTWGT: 2.00 LB  
CAD: 105486753/NET4640

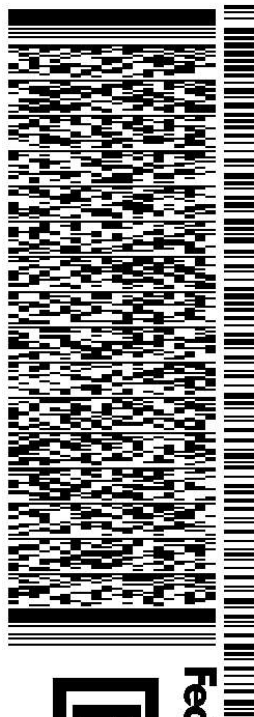
ROCKVILLE, MD 20853  
UNITED STATES US

BILL SENDER

TO **FRED ALLYN, III, MAYOR**  
**TOWN OF LEDYARD**  
**741 COLONEL LEDYARD HIGHWAY**

**LEDYARD CT 06339**

REF: (860) 464-3221  
INV/ PO: DEPT:



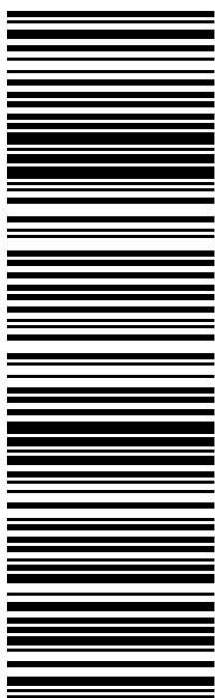
J233023071001uv

583J4I6AE4I9AE3

TRK# 7728 3801 4217  
0201

WED - 26 JUL 10:30A  
PRIORITY OVERNIGHT

**EB GONA**  
06339  
CT-US BDL



**After printing this label:**

1. Use the 'Print' button on this page to print your label to your laser or inkjet printer.
2. Fold the printed page along the horizontal line.
3. Place label in shipping pouch and affix it to your shipment so that the barcode portion of the label can be read and scanned.

**Warning:** Use only the printed original label for shipping. Using a photocopy of this label for shipping purposes is fraudulent and could result in additional billing charges, along with the cancellation of your FedEx account number.

Use of this system constitutes your agreement to the service conditions in the current FedEx Service Guide, available on [fedex.com](http://fedex.com). FedEx will not be responsible for any claim in excess of \$100 per package, whether the result of loss, damage, delay, non-delivery, misdelivery, or misinformation, unless you declare a higher value, pay an additional charge, document your actual loss and file a timely claim. Limitations found in the current FedEx Service Guide apply. Your right to recover from FedEx for any loss, including intrinsic value of the package, loss of sales, income interest, profit, attorney's fees, costs, and other forms of damage whether direct, incidental, consequential, or special is limited to the greater of \$100 or the authorized declared value. Recovery cannot exceed actual documented loss. Maximum for items of extraordinary value is \$1,000, e.g. jewelry, precious metals, negotiable instruments and other items listed in our Service Guide. Written claims must be filed within strict time limits, see current FedEx Service Guide.





August 21, 2023

Dear Customer,

The following is the proof-of-delivery for tracking number: 772838014217

---

**Delivery Information:**

---

<b>Status:</b>	Delivered	<b>Delivered To:</b>	Receptionist/Front Desk
<b>Signed for by:</b>	L.CHAPMAN	<b>Delivery Location:</b>	
<b>Service type:</b>	FedEx Priority Overnight		
<b>Special Handling:</b>	Deliver Weekday		
		<b>Delivery date:</b>	Aug 21, 2023 09:43

---

**Shipping Information:**

---

<b>Tracking number:</b>	772838014217	<b>Ship Date:</b>	Aug 18, 2023
		<b>Weight:</b>	
<b>Recipient:</b>		<b>Shipper:</b>	

Proof-of-delivery details appear below; however, no signature is available for this FedEx Express shipment because a signature was not required.

ORIGIN ID:GAA (301) 266-0258  
CATHRINE CONKLIN  
GENERAL DYNAMICS  
4603 KEMPER STREET

SHIP DATE: 25 JUL 23  
ACTWGT: 2.00 LB  
CAD: 105486753/NET4640

ROCKVILLE, MD 20853  
UNITED STATES US

BILL SENDER

TO JULIET HODGE, PLANNING DIRECTOR  
TOWN OF LEDYARD  
741 COLONEL LEDYARD HIGHWAY

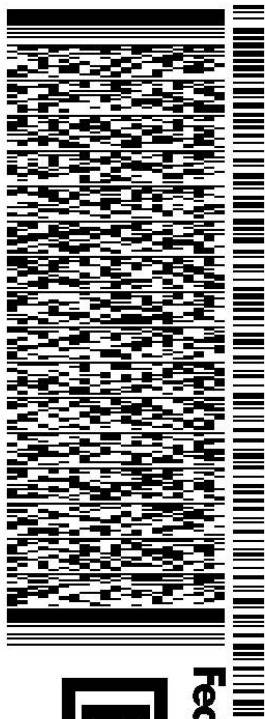
LEDYARD CT 06339

(860) 464-3214

REF:

INV/  
PO:

DEPT:

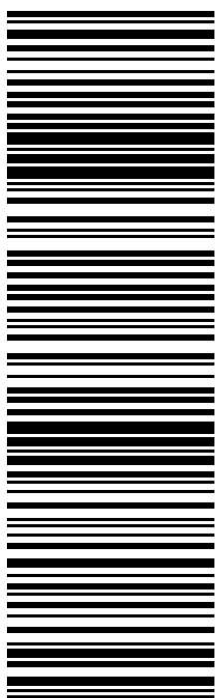


J233023071001uv

TRK# 7728 3803 2606  
0201

WED - 26 JUL 10:30A  
PRIORITY OVERNIGHT

EB GONA 06339  
CT-US BDL



583J4I6AE4I9AE3

**After printing this label:**

1. Use the 'Print' button on this page to print your label to your laser or inkjet printer.
2. Fold the printed page along the horizontal line.
3. Place label in shipping pouch and affix it to your shipment so that the barcode portion of the label can be read and scanned.

**Warning:** Use only the printed original label for shipping. Using a photocopy of this label for shipping purposes is fraudulent and could result in additional billing charges, along with the cancellation of your FedEx account number.

Use of this system constitutes your agreement to the service conditions in the current FedEx Service Guide, available on [fedex.com](http://fedex.com). FedEx will not be responsible for any claim in excess of \$100 per package, whether the result of loss, damage, delay, non-delivery, misdelivery, or misinformation, unless you declare a higher value, pay an additional charge, document your actual loss and file a timely claim. Limitations found in the current FedEx Service Guide apply. Your right to recover from FedEx for any loss, including intrinsic value of the package, loss of sales, income interest, profit, attorney's fees, costs, and other forms of damage whether direct, incidental, consequential, or special is limited to the greater of \$100 or the authorized declared value. Recovery cannot exceed actual documented loss. Maximum for items of extraordinary value is \$1,000, e.g. jewelry, precious metals, negotiable instruments and other items listed in our Service Guide. Written claims must be filed within strict time limits, see current FedEx Service Guide.



August 21, 2023

Dear Customer,

The following is the proof-of-delivery for tracking number: 772838032606

---

**Delivery Information:**

---

<b>Status:</b>	Delivered	<b>Delivered To:</b>	Receptionist/Front Desk
<b>Signed for by:</b>	L.CHAPMAN	<b>Delivery Location:</b>	
<b>Service type:</b>	FedEx Priority Overnight		
<b>Special Handling:</b>	Deliver Weekday		
		<b>Delivery date:</b>	Aug 21, 2023 09:43

---

**Shipping Information:**

---

<b>Tracking number:</b>	772838032606	<b>Ship Date:</b>	Aug 18, 2023
		<b>Weight:</b>	
<b>Recipient:</b>		<b>Shipper:</b>	

Proof-of-delivery details appear below; however, no signature is available for this FedEx Express shipment because a signature was not required.

ORIGIN ID:GAA (301) 266-0258  
CATHERINE CONKLIN  
GENERAL DYNAMICS  
4603 KEMPER STREET

SHIP DATE: 25 JUL 23  
ACTWGT: 2.00 LB  
CAD: 105486753/INET4640

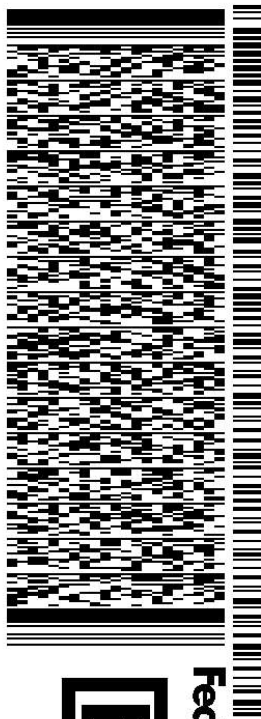
ROCKVILLE, MD 20853  
UNITED STATES US

BILL SENDER

TO **JOHN J. FULLER, PRESIDENT/GM**  
**RED WOLF BROADCASTING**  
**758 COLONEL LEDYARD HIGHWAY**

**LEDYARD CT 06339**

REF: (860) 464-1065  
INV/ PO: DEPT:



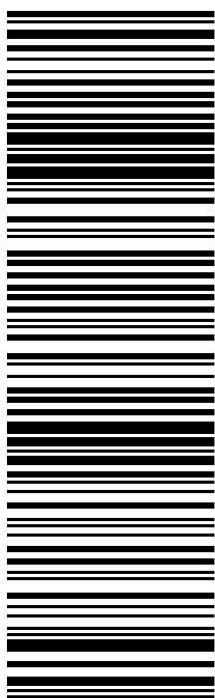
J233023071001uv

583J4I6AE4I9AE3

TRK# 7728 3804 7609  
0201

WED - 26 JUL 10:30A  
PRIORITY OVERNIGHT

**EB GONA**  
06339  
CT-US BDL



**After printing this label:**

1. Use the 'Print' button on this page to print your label to your laser or inkjet printer.
2. Fold the printed page along the horizontal line.
3. Place label in shipping pouch and affix it to your shipment so that the barcode portion of the label can be read and scanned.

**Warning:** Use only the printed original label for shipping. Using a photocopy of this label for shipping purposes is fraudulent and could result in additional billing charges, along with the cancellation of your FedEx account number.

Use of this system constitutes your agreement to the service conditions in the current FedEx Service Guide, available on [fedex.com](http://fedex.com). FedEx will not be responsible for any claim in excess of \$100 per package, whether the result of loss, damage, delay, non-delivery, misdelivery, or misinformation, unless you declare a higher value, pay an additional charge, document your actual loss and file a timely claim. Limitations found in the current FedEx Service Guide apply. Your right to recover from FedEx for any loss, including intrinsic value of the package, loss of sales, income interest, profit, attorney's fees, costs, and other forms of damage whether direct, incidental, consequential, or special is limited to the greater of \$100 or the authorized declared value. Recovery cannot exceed actual documented loss. Maximum for items of extraordinary value is \$1,000, e.g. jewelry, precious metals, negotiable instruments and other items listed in our Service Guide. Written claims must be filed within strict time limits, see current FedEx Service Guide.



August 23, 2023

Dear Customer,

The following is the proof-of-delivery for tracking number: 772838047609

---

**Delivery Information:**

---

<b>Status:</b>	Delivered	<b>Delivered To:</b>	Receptionist/Front Desk
<b>Signed for by:</b>	L.SCHLOUGH	<b>Delivery Location:</b>	
<b>Service type:</b>	FedEx Priority Overnight		
<b>Special Handling:</b>	Deliver Weekday		
		<b>Delivery date:</b>	Aug 22, 2023 12:16

---

**Shipping Information:**

---

<b>Tracking number:</b>	772838047609	<b>Ship Date:</b>	Aug 18, 2023
		<b>Weight:</b>	
<b>Recipient:</b>		<b>Shipper:</b>	

Signature image is available. In order to view image and detailed information, the shipper or payor account number of the shipment must be provided.