



December 4, 2024

Melanie A. Bachman
Acting Executive Director
Connecticut Siting Council
10 Franklin Square
New Britain, CT 06051

RE: EM-VER-064-240117 - Cellco Partnership d/b/a Verizon Wireless, 289-H Mountain Street, Hartford, Connecticut.

Notice of Construction Complete

Dear Ms. Bachman:

The purpose of this letter is to notify the Siting Council that construction activity associated with the above-referenced facility modifications has been completed.

If you have any questions or need any additional information regarding this facility, please do not hesitate to contact me.

Sincerely,

A handwritten signature in black ink that reads 'Barbara Kassabian'.

Barbara Kassabian

Barbara Kassabian
c/o Cellco Partnership d/b/a Verizon Wireless
Centerline Communications, LLC
750 West Center Street, Suite 301
West Bridgewater, MA 02379
Mobile: (603) 303-8001
bkassabian@clinellc.com

750 W Center St, Suite 301
West Bridgewater, MA 02379
781-713-4725

November 19, 2024

Mr. John Collins
City of Hartford Building Department
550 Main Street, Suite 001
Hartford, CT 06103

Re: Letter of Professional Opinion

Project: Hartford South 3 CT – (Verizon)
289 Mountain Street
Hartford, CT 06106

Owner: American Tower Corporation

Engineer: A.T. Engineering Services, LLC
1 Fenton Main, Suite 300, Cary, NC 27511

Contractor: NEC Group
21 Marion Drive, Kingston, MA 02364

Centek Project No.: 24140.31

Building Permit No.: COM-ALT-24-000082

Dear Mr. Collins,

We are providing this “Letter of Professional Opinion” with regard to the structural components at the above referenced project.

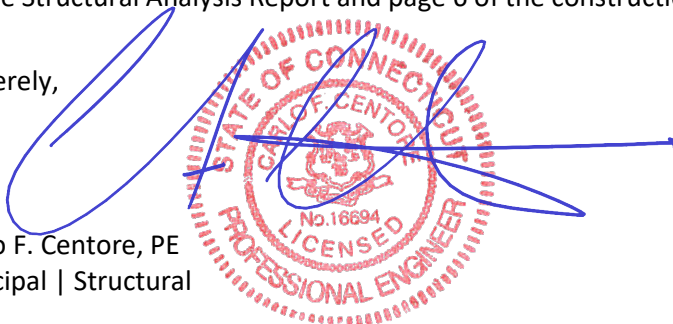
The following are the basis for substantiating compliance with New/Replacement Antenna Mount Analysis Report prepared by Colliers Engineering & Design dated 09/19/2023:

- ❑ Field observations of completed construction on 11/11/2024.

Please note that a discrepancy in the tower-mounted equipment and the tower-mounted equipment listed in the construction documents prepared by A.T. Engineering Services, LLC (dated 12/29/2023) Rev.0 and the Structural Analysis Report prepared by American Tower Corporation (dated 12/15/2023) have been identified. This inconsistency between the tower-mounted equipment and these documents is highlighted in red on the attached pages: page 5 of the Structural Analysis Report and page 6 of the construction documents.

Sincerely,

Carlo F. Centore, PE
Principal | Structural

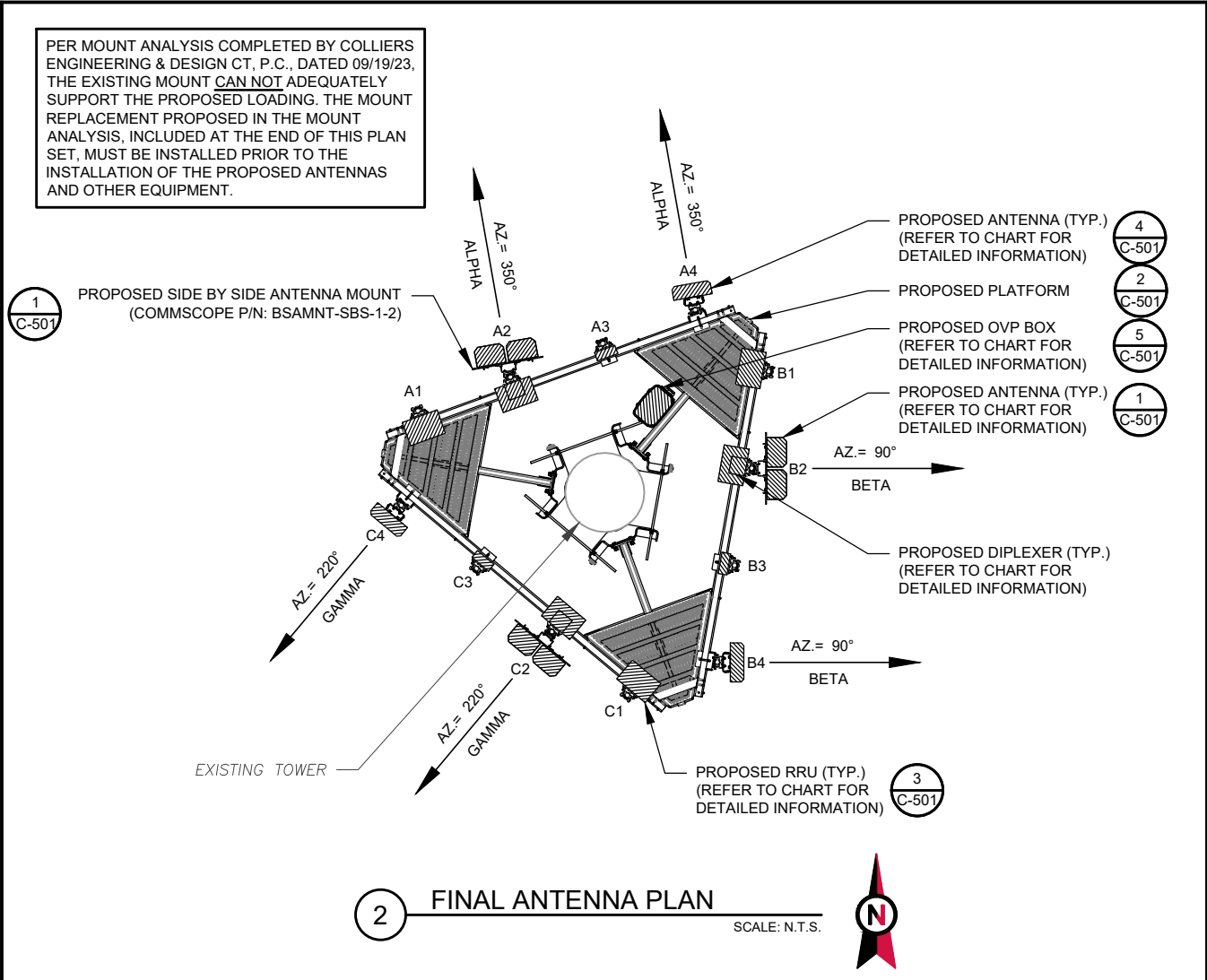
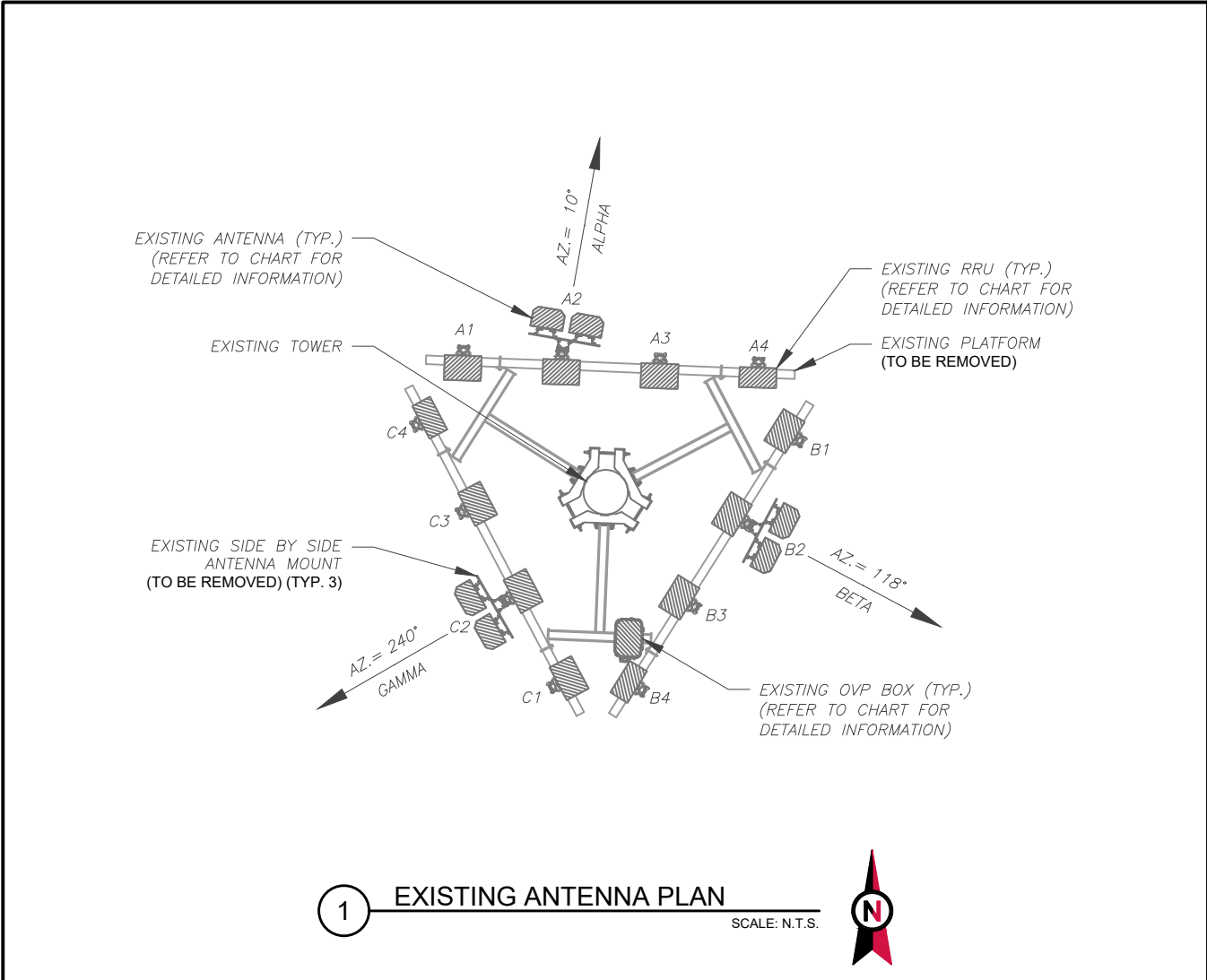


VERIZON WIRELESS Final Loading

Elev (ft)	Qty	Equipment	Lines
80.0	1	Platform with Handrails	(2) 1 5/8" Hybriflex
	1	Raycap RCMDC-6627-PF-48 RVZDC-6627-PF-48	
	3	Commscope CBC78T-DS-43-2X	
	3	Commscope NHH-65B-R2B	
	3	Commscope NHHSS-65B-R2BT4	
	3	Samsung B2/B66A RRH ORAN (RF 4439d-25A)	
	3	Samsung MT6413-77A	
	3	Samsung RF4461d-13A	
	3	Samsung RT4423-48A	

Other Existing/Reserved Loading

Elev (ft)	Qty	Equipment	Lines	Carrier
110.0	1	Clearwirre Side Arm	(2) 1/2" Coax (1) 2" conduit	CLEARWIRE CORPORATION
109.9	3	Argus LLPX310R	-	CLEARWIRE CORPORATION
109.8	2	DragonWave Horizon Compact	-	CLEARWIRE CORPORATION
109.7	1	DragonWave A-ANT-11G-2.5-C	-	CLEARWIRE CORPORATION
	1	DragonWave A-ANT-23G-1-C		
109.0	1	12" x 12" Junction Box	-	CLEARWIRE CORPORATION
107.0	3	Samsung 1.9GHz RRH	-	CLEARWIRE CORPORATION
104.0	3	Ericsson AIR 6419 B77G	-	AT&T MOBILITY
102.6	2	CCI OPA-65R-LCUU-H6	-	AT&T MOBILITY
102.0	1	CCI DMP65R-BU8DA-K	(3) 0.41" (10.3mm) Fiber (7) 0.92" (23.4mm) Cable (12) 1 5/8" Coax (3) 2" conduit	AT&T MOBILITY
	1	Quintel QD8616-7		
	1	Raycap DC9-48-60-24-8C-EV		
	1	Small Platform with Handrails		
	2	Quintel QD6616-7		
	2	CCI DMP65R-BU6DA		
	2	Quintel QD6616-7		
	2	Raycap DC6-48-60-18-8F(32.8 lbs)		
	3	Ericsson RRUS 32 B30		
	3	Ericsson RRUS 4415 B25		
	3	Ericsson RRUS 4426 B66		
	3	Ericsson RRUS 4449 B5, B12		
	3	Ericsson RRUS 4478 B14		
	3	Ericsson RRUS-11		
100.0	3	Ericsson AIR 6449 B77D/ C-Band	-	AT&T MOBILITY
90.0	1	Platform w/ Handrails	(4) 1 1/4" (1.25"- 31.8mm) Fiber	T-MOBILE
	3	Ericsson AIR32 B66Aa/B2a		
	3	Ericsson Air 3246 B66		
	3	Ericsson Air6449 B41		
	3	Ericsson RRUS 4415 B25		
	3	Ericsson Radio 4449 B71 B85A		
	3	RFS APXVAARR24_43-U-NA20		
74.7	1	Scala 840 10212	-	TOWN OF WEST HARTFORD
71.4	1	TX RX Systems 421-86A-10-18-12-N	-	TOWN OF WEST HARTFORD



EXISTING ANTENNA SCHEDULE								
LOCATION			ANTENNA SUMMARY				NON ANTENNA SUMMARY	
SECTOR	RAD	AZ	POS	ANTENNA	BAND	STATUS	ADDITIONAL TOWER MOUNTED EQUIPMENT	STATUS
ALPHA	80'	10°	A1	-	-	-	UHIE B66A RRH 4X45	RMV
			A2	(2) JAHH-65B-R3B	L700,L850,L1900, LAWS	RMV	UHBA B13 RRH 4X30	RMV
			A3	-	-	-	UHFA B25 RRH 4X30	RMV
			A4	-	-	-	AHCA AIRSCALE RRH 4T4R B5 160W	RMV
BETA	80'	118°	B1	-	-	-	UHIE B66A RRH 4X45	RMV
			B2	(2) JAHH-65B-R3B	L700,L850,L1900, LAWS	RMV	UHBA B13 RRH 4X30	RMV
			B3	-	-	-	UHFA B25 RRH 4X30	RMV
			B4	-	-	-	AHCA AIRSCALE RRH 4T4R B5 160W	RMV
GAMMA	80'	240°	C1	-	-	-	UHIE B66A RRH 4X45	RMV
			C2	(2) JAHH-65B-R3B	L700,L850,L1900, LAWS	RMV	UHBA B13 RRH 4X30	RMV
			C3	-	-	-	UHFA B25 RRH 4X30	RMV
			C4	-	-	-	AHCA AIRSCALE RRH 4T4R B5 160W	RMV

NOTES
1. CONFIRM WITH VERIZON REP FOR APPLICABLE UPDATES/REVISIONS AND MOST RECENT RFDS FOR NSN CONFIGURATION (CONFIG). GC TO CAP ALL UNUSED PORTS.
2. CONFIRM SPACING OF PROPOSED EQUIP DOES NOT CAUSE TOWER CONFLICTS NOR IMPEDE TOWER CLIMBING PEGS.
STATUS ABBREVIATIONS
RMV: TO BE REMOVED
RMN: TO REMAIN
REL: TO BE RELOCATED
ADD: TO BE ADDED
CABLE LENGTHS FOR JUMPERS
JUNCTION BOX TO RRU: 15'
RRU TO ANTENNA: 10'


FINAL ANTENNA SCHEDULE								
LOCATION			ANTENNA SUMMARY				NON ANTENNA SUMMARY	
SECTOR	RAD	AZ	POS	ANTENNA	BAND	STATUS	ADDITIONAL TOWER MOUNTED EQUIPMENT	STATUS
ALPHA	80'	350°	A1	-	-	-	RF4439D-25A	ADD
			A2	NHH-65B-R2B	L700,L850,5G 850,L1900	ADD	RF4461D-13A	ADD
			A3	NHHSS-65B-R2BT4	LAWS,LCBRS	ADD	CBC78T-DS-43-2X	ADD
			A4	-	-	-	RT4423-48A	ADD
BETA	80'	90°	B1	MT6413-77A	5G L-SUB6	ADD	-	-
			B2	-	-	-	RF4439D-25A	ADD
			B3	NHH-65B-R2B	L700,L850,5G 850,L1900	ADD	RF4461D-13A	ADD
			B4	NHHSS-65B-R2BT4	LAWS,LCBRS	ADD	CBC78T-DS-43-2X	ADD
GAMMA	80'	220°	C1	-	-	-	RT4423-48A	ADD
			C2	MT6413-77A	5G L-SUB6	ADD	-	-
			C3	-	-	-	RF4439D-25A	ADD
			C4	NHH-65B-R2B	L700,L850,5G 850,L1900	ADD	RF4461D-13A	ADD

EXISTING FIBER DISTRIBUTION / OVP BOX		EXISTING CABLING SUMMARY	
MODEL NUMBER	STATUS	CABLE QTY, SIZE, TYPE	STATUS
(1) RVZDC-6627-PF-48	RMV	(12) 1-5/8" COAX CABLES	RMV

FINAL FIBER DISTRIBUTION / OVP BOX		FINAL CABLING SUMMARY	
MODEL NUMBER	STATUS	CABLE QTY, SIZE, TYPE	STATUS
(1) RVZDC-6627-PF-48	ADD	(2) 1-5/8" HYBRIFLEX CABLES	ADD

EQUIPMENT SCHEDULES

RVZDC-6627-PF-48




AMERICAN TOWER®
A.T. ENGINEERING SERVICES LLC
1 FENTON MAIN
SUITE 300
CARY, NC 27511
PHONE: (919) 468-0112
PEC.0001553

THE USE AND PUBLICATION OF THESE DRAWINGS SHALL BE RESTRICTED TO THE ORIGINAL SITE FOR WHICH THEY ARE PREPARED. ANY USE OR DISCLOSURE OTHER THAN THAT WHICH RELATES TO AMERICAN TOWER OR THE SPECIFIED CARRIER IS STRICTLY PROHIBITED. NEITHER THE ARCHITECT NOR THE ENGINEER WILL BE PROVIDING ON-SITE CONSTRUCTION REVIEW OF THIS PROJECT. CONTRACTOR(S) MUST VERIFY ALL DIMENSIONS AND ADVISE AMERICAN TOWER OR THE SPECIFIED CARRIER OF ANY DISCREPANCIES. ANY PRIOR ISSUANCE OF THIS DRAWING IS SUPERSEDED BY THE LATEST VERSION.


REV.	DESCRIPTION	BY	DATE
0	FOR CONSTRUCTION	MNC	12/29/2023
1			
2			
3			
4			

ATC SITE NUMBER:
302481
ATC SITE NAME:
HRFR - SOUTH
VERIZON SITE NAME:
HARTFORD SO III CT
SITE ADDRESS:
289 MOUNTAIN STREET
HARTFORD, CT 06106

SEAL:



Digitally Signed: 2024-01-02



ATC JOB NO:	14568527_G0
CUSTOMER ID:	HARTFORD SO III CT
CUSTOMER #:	5000392472

ANTENNA INFORMATION & SCHEDULE

SHEET NUMBER: C-401	REVISION: 0
-------------------------------	-----------------------

Oct 8, 2024 at 3:27:54 PM
200 Newington Ave
Hartford CT 06106
United States

DC SPD TYPE 2
ENVIRONMENTAL TYPE 4X
CONTAINS NO SERVICEABLE PARTS

UL 1449

MFG DATE 06-24

H1344

CURRENT 48A
OPER TEMP -35 TO +70C
In 20 kA
OPER VOLTAGE 60 VDC
Vdcmcov 75 VDC
VPR 330V DC+ to DC-, 330V DC+ to GND, 330V DC- to GND

MODEL: RVZDC-6627-PF-48



SUITABLE FOR USE ON A CIRCUIT CAPABLE OF DELIVERING
NOT MORE THAN 25,000 DC AMPERES, 75 VOLTS MAXIMUM,
WHEN PROTECTED BY A 60 AMPERE CIRCUIT BREAKER
RATED 125 VOLTS MAXIMUM. REMOTE ALARM WIRES TO BE
CONNECTED TO CLASS 1 CIRCUITS ONLY.

SN: 1595848P

Raycap, Inc. USA 800 890-2569



This product is subject to one or more patents
Suitable for use in DC Systems Only

150-3898C

HARTFORD S3_CT
PRIMARY OVP

Oct 28, 2024 at 1:27:35 PM
200 Newington Ave
Hartford CT 06106
United States



Oct 28, 2024 at 1:29:26 PM
200 Newington Ave
Hartford CT 06106
United States



Oct 28, 2024 at 1:28:34 PM
200 Newington Ave
Hartford CT 06106
United States

