



STATE OF CONNECTICUT

CONNECTICUT SITING COUNCIL

Ten Franklin Square
New Britain, Connecticut 06051
Phone: (860) 827-2935
Fax: (860) 827-2950

November 9, 1998

Peter J. Tyrrell
Senior Counsel
Springwich Cellular Limited Partnership
500 Enterprise Drive
Rocky Hill, CT 06067-3900

Re: EM-SCLP-064-981027 - Springwich Cellular Limited Partnership notice of intent to modify an existing telecommunications facility located at 11 Mountain Road in Hartford, Connecticut.

Dear Attorney Tyrrell:

At a public meeting held on November 5, 1998, the Connecticut Siting Council (Council) acknowledged your notice to modify this existing telecommunications facility in Hartford, Connecticut, pursuant to Section 16-50j-73 of the Regulations of Connecticut State Agencies.

The proposed modifications are to be implemented as specified here and in your notice dated October 26, 1998. The modifications are in compliance with the exception criteria in Section 16-50j-72 (b) of the Regulations of Connecticut State Agencies as changes to an existing facility site that would not increase tower height, extend the boundaries of the tower site, increase noise levels at the tower site boundary by six decibels, and increase the total radio frequency electromagnetic radiation power density measured at the tower site boundary to or above the standard adopted by the State Department of Environmental Protection pursuant to General Statutes § 22a-162. This facility has been carefully modeled to ensure that radio frequency emissions are conservatively below State and federal standards applicable to the frequency now used on this tower. Any additional change to this facility will require explicit notice to this agency pursuant to Regulations of Connecticut State Agencies Section 16-50j-73. Such notice shall include all relevant information regarding the proposed change with cumulative worst-case modeling of radio frequency exposure at the closest point of uncontrolled access to the tower base, consistent with Federal Communications Commission, Office of Engineering and Technology, Bulletin No. 65. Any deviation from this format may result in the Council implementing enforcement proceedings pursuant to General Statutes § 16-50u including, without limitation, imposition of expenses resulting from such failure and of civil penalties in an amount not less than one thousand dollars per day for each day of construction or operation in material violation.

Thank you for your attention and cooperation.

Very truly yours,

Mortimer A. Gelston
Chairman

MAG/RKE/jlh

c: Honorable Michael P. Peters, Mayor, City of Hartford

Springwich Cellular Limited Partnership

500 Enterprise Drive
 Rocky Hill, Connecticut 06067-3900
 Phone: (860) 513-7755
 Fax: (860) 513-7614

Peter J. Tyrrell
General Counsel

October 26, 1998

RECEIVED

OCT 27 1998

**CONNECTICUT
 SITING COUNCIL**

Mr. Mortimer A. Gelston, Chairman
 Connecticut Siting Council
 10 Franklin Square
 New Britain, CT 06051

Re: Springwich Cellular Limited Partnership-Hartford Cell Site

Dear Chairman Gelston:

Springwich Cellular Limited Partnership ("SCLP") plans to install two antennas and related equipment for the Town of West Hartford at our Cellular site located at 11 Mountain Road, Hartford, Connecticut. Please accept this letter as notice of intent, pursuant to R.C.S.A. Section 16-50j-73, of the placement of associated equipment on an existing facility pursuant to R.C.S.A. Section 16-50j-72(b)(2). In further compliance with R.C.S.A. Section 16-50j-73, a copy of this letter is being sent to the Mayor of Hartford.

The existing tower is a 100' monopole tower located at the end of Mountain Road, Hartford, CT. SCLP plans to install two DECIBEL, Model DB809XT type antennas on the tower. SCLP also plans on installing a 8' x 12' equipment building which will contain radio transmission equipment adjacent to the existing tower for the town of West Hartford.

The addition of the Town of West Hartford's antennas and equipment to the tower site does not constitute a substantial environmental affect since such additions do not cause a significant change or alteration in the physical and environmental characteristics of the site (See attached site sketch). Rather, the planned changes to the existing tower falls squarely within those activities explicitly provided for in R.C.S.A. Section 16-50j-72(c).

First, the height of the existing tower will be unaffected. Two DECIBEL, Model DB809XT 9 dB antennas will be attached to the tower at the 60 and 75 foot levels. The center of radiation will be 60' AGL. The tower will not require any structural modification to support the proposed attachments.

Second, the proposed addition will not extend the site boundaries. The fenced area will not be increased, therefore staying within the existing leased parcel to accommodate West Hartford's proposed equipment building. The attached site sketch shows the proposed location of the equipment building in relation to the tower.

Third, the proposed addition will not increase the noise levels at the existing facility by six decibels or more.

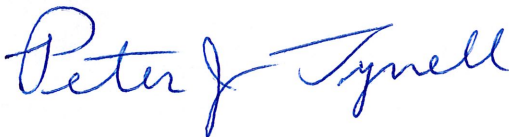
Finally, operation of the additional antennas will not increase the total radio frequency electromagnetic radiation power density, measured at the tower base, to a level at or above the ANSI standard. A "worst-case" calculation from a point at the base of the tower indicates that West Hartford's operations result in a 16.36 % of MPE and the total of the tower which includes SNET is 29.7 % MPE. (See chart below)

Company	Freq. Range (MHz)	Power / Channel (Watts)	Number of Channels	Height (CL)	ANSI/IEEE Standards (mWcm ²)	Power Density (mW/cm ²)	Percent of MPE (%)
Town of West Hartford	866.0750 to 868.8125	150	5	60'	0.5774	0.0944	16.36
SNET Cellular Inc.	800 - 894	100	19	100'	0.5867	0.0783	13.34
Total Per Cent Of MPE							29.7

For the foregoing reasons, Springwiche Cellular Limited Partnership seeks a ruling that its proposed additions to the facility comply with R.C.S.A. Sections 16-50j-72(b)(2) and therefore request a determination that the placement of the antennas and equipment on the existing non-facility tower site does not constitute a substantial environmental effect.

Thank you for your cooperation and attention to this matter.

Sincerely,



Attachments

cc Mayor of Hartford

Springwich Cellular Limited Partnership

500 Enterprise Drive
Rocky Hill, Connecticut 06067-3900
Phone: (860) 513-7755
Fax: (860) 513-7614

Peter J. Tyrrell
General Counsel

October 26, 1998

The Honorable Michael Peters
City of Hartford
550 Main Street
Hartford, Connecticut 06103

Dear Mayor Peters:

Springwich Cellular Limited Partnership (SCLP) plans to place two whip antennas for the town of West Hartford on our existing 100 foot monopole tower, located on Mountain Road in the City of Hartford. These antennas will be utilized by the town for their local and emergency communications.

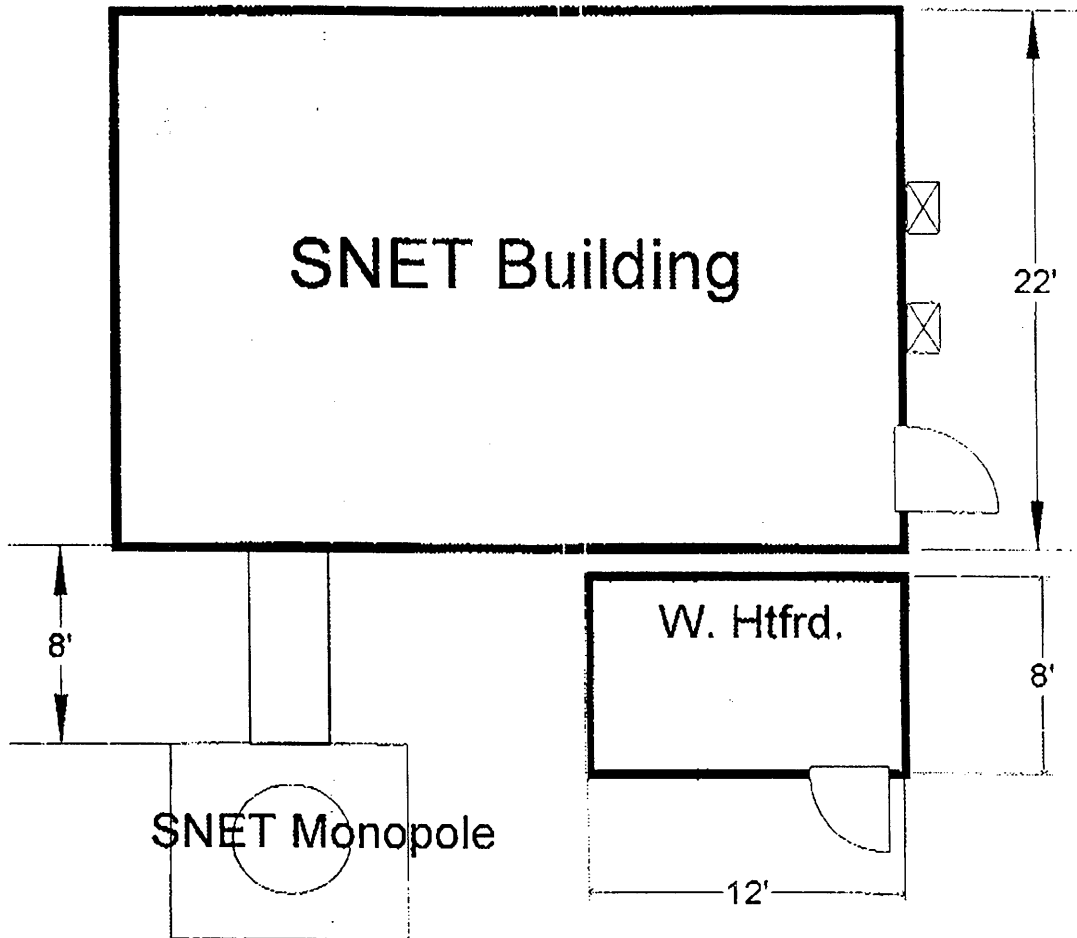
As required by Section 16-50j-73 of the Regulations of Connecticut State Agencies (R.C.S.A.), please accept this letter and the attached letter to the Connecticut Siting Council dated October 26, 1998, as notice of intent of the placement of associated equipment on an existing facility pursuant to R.C.S.A Section 16-50j-72(b)(2).

The attached letter fully describes SCLP's proposal. However, if you have any questions or require any further information on our plans or the Siting Council's procedures, please call me at (860) 513-7755 or Mr. Joel Rinebold, Executive Director, Connecticut Siting Council at (860) 827-2935.

Sincerely,

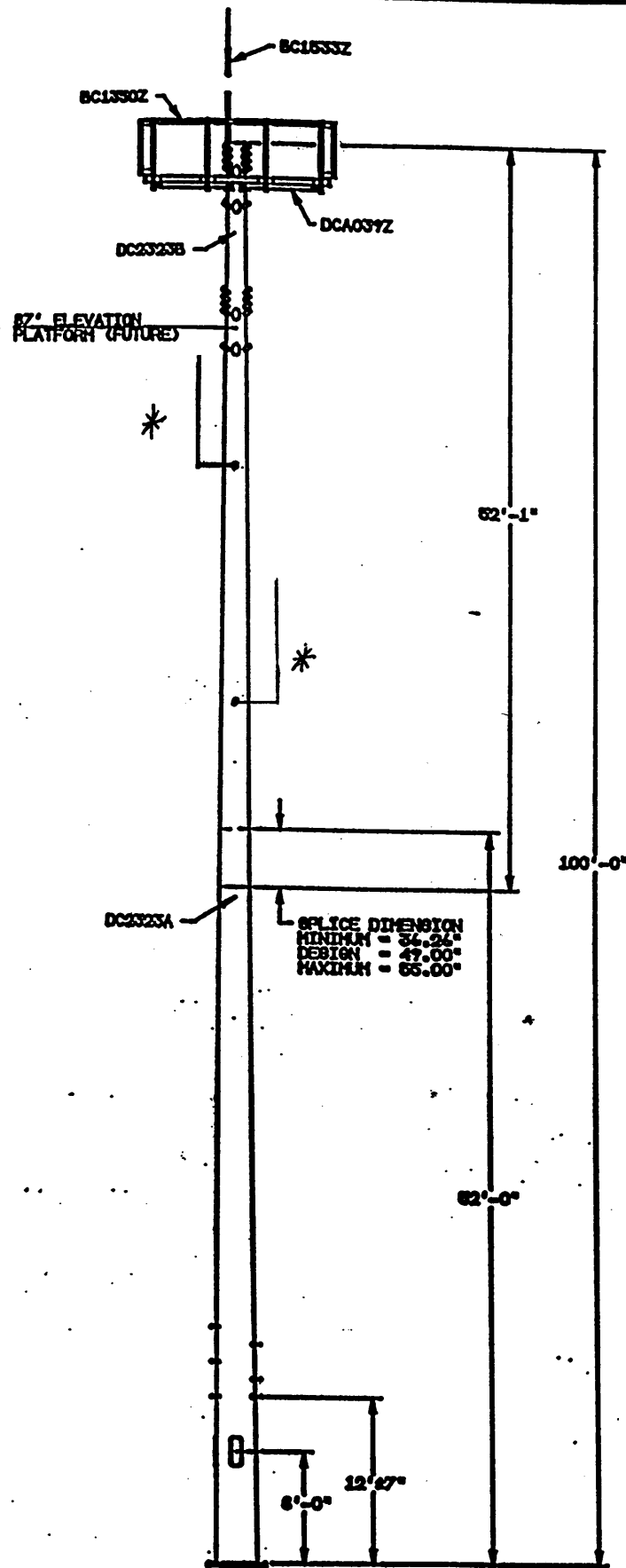


Enclosure

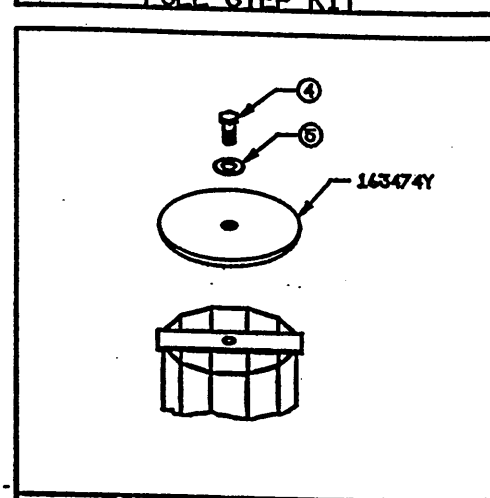
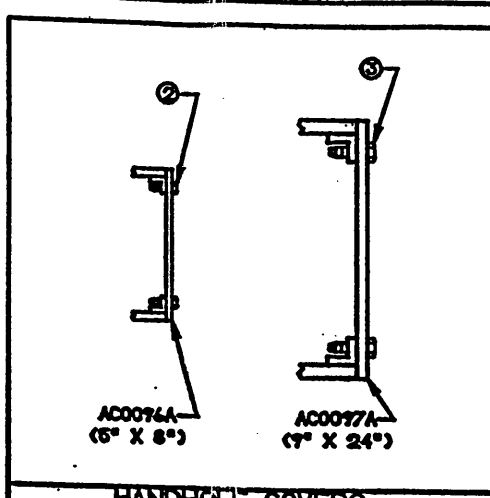
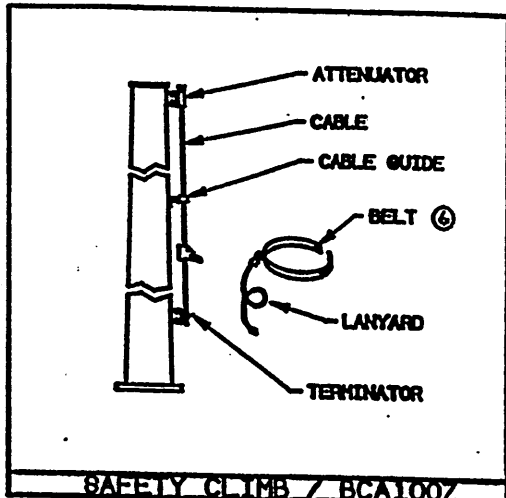
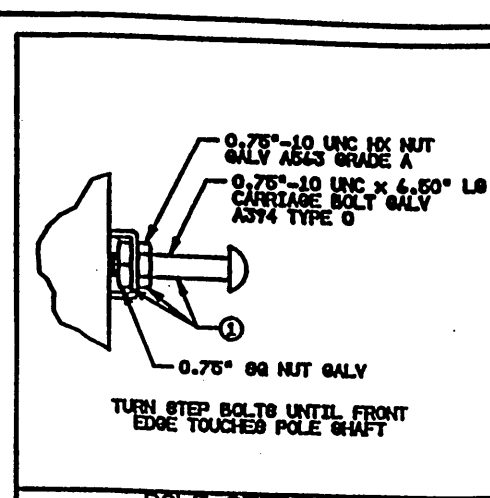
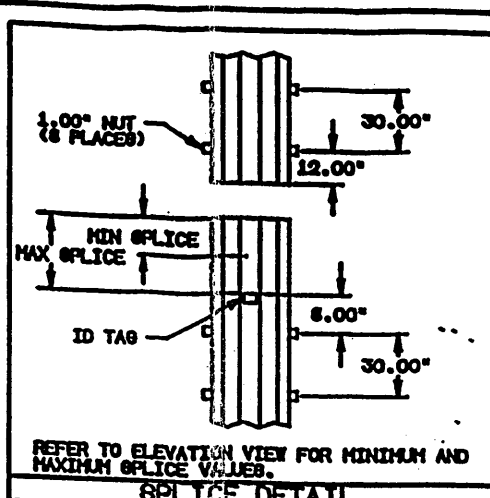
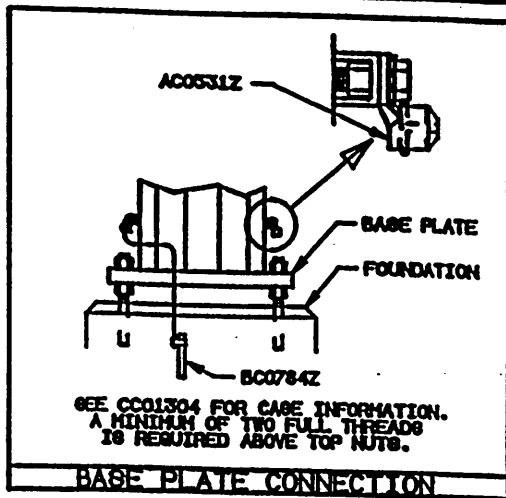


NOTE: Fence & gate are 33 feet from SNET Building

8' x 12' Equipment Shelter



ELEVATION VIEW
SEE FABRICATION DRAWINGS
FOR ADDITIONAL DETAILS



- NOTES:
- POLE SHAFT GOVERNING REACTIONS:
 MOMENT = 12,719 IN-KIPS
 SHEAR = 12,719 #
 VERTICAL = 14,476 #
 - COMPONENT IDENTIFICATION: TAG LOCATIONS ARE INDICATED BY CALLOUTS ON DRAWING. TAG MARK IN BILL OF MATERIAL SHOWS FIRST 4 DIGITS ON EACH TAG. SUBSEQUENT DIGITS WILL INDICATE SEQUENCE OF MANUFACTURER.
 - ASSEMBLY AND ERECTION GUIDELINES: SEE VALMONT COMMUNICATION POLE INSTALLATION GUIDELINE 1012.
 - SLIP JOINT JACKING FORCE:
 MINIMUM = 25,000#
 MAXIMUM = 70,000#
 - WEIGHT: WEIGHT IN TITLE BLOCK IS TOTAL STRUCTURE WEIGHT EXCLUDING ANCHORAGE.
 - FINISH: GALVANIZED PER ASTM A-123.
 - POLE DESIGN CONFORMS TO EIA/TIA-222-E FOR:
 100 MPH WIND WITH NO ICE, EXPOSURE "B"
 67 MPH WIND WITH 1/2" ICE, EXPOSURE "B".
 - DESIGN LOADINGS:
 1-CELLULAR PLATFORM MOUNTED @ 77' ELEV.
 12-ALP7212'S MOUNTED ON PLATFORM FACES.
 3-DB807'S MOUNTED ON PLATFORM CORNERS.
 1-CELLULAR PLATFORM MOUNTED @ 87' ELEV. (F)
 12-ALP7212'S MOUNTED ON PLATFORM FACES. (F)
 3-DB807'S MOUNTED ON PLATFORM CORNERS. (F)

BILL OF MATERIAL
(SHIPPING WEIGHT FOR ALL)

VALMONT PART NUMBER	DESCRIPTION	UNIT WEIGHT (LBS)	QTY PER STR
DC2 323A	SECTION ASSEMBLY	6,400	1
DC2 323B	SECTION ASSEMBLY	2,625	1
CC0 1304	CAGE ASSEMBLY	1,574	1
NOTE	PLATFORM ASSEMBLY (DCA039Z)	1,277	1
NOTE	SAFETY CLIMB ASSY (BGA100Z)	57	1
NOTE	E.I.A. GROUNDING (BC0784Z)	20	1
NOTE	RAIL KIT ASSEMBLY (BC1530Z)	412	1
NOTE	LIGHTNING ROD KIT (BC1533Z)	67	1
NOTE	GROUND LUG KIT (AC0531Z)	1	2
MISCELLANEOUS			
AC0076A	HANDHOLE COVER PLATE (6 X 8)	3	12
AC0077A	HANDHOLE COVER PLATE (7 X 24)	7	2
143474	POLE CAP COVER PLATE (15" DIA)	13	1

VALMONT PART NUMBER	DESCRIPTION				QTY PER STR
	HARDWARE SIZE (IN)	GENERAL	FROM	ASTM SPEC.	
1 2132A	BOLT	STEP KIT HDGV			74
2 124036	0.25 0.75	SCREW	S.S. 1A110		24
3 141474	0.58 1.00	SCREW	S.S. 1A110		7
4 141171	0.75 1.75	CAP BOLT	HDGV A325		1
5 142054	0.75	FLAT	HDGV A334		1
6 LABEL		SAFETYBELT			1

NOTE: NEW ANTENNA DENOTED BY
ASTERISKS AT 60 FT & 75 FT.

SHAFT INFO

SEC	LENGTH	BASE OD	TOP OD	THK	WGT
A	82'-00"	24.00"	23.84"	0.813"	8-22
B	82'-01"	24.45"	24.00"	0.890"	8-22

DUPLICATE DRAWING DISTRIBUTION: BRENNA TX

PER ASTM A325-71C, EXCLUDE SECTIONS 6.5 & 7.2

DATE: 04/19/96
 DRAWN BY: LVS
 CHECKED BY: LVS
 DATE: 04/11/96

VALMONT COMMUNICATIONS
 100' MONOPOLE



STATE OF CONNECTICUT
CONNECTICUT SITING COUNCIL

Ten Franklin Square
New Britain, Connecticut 06051
Phone: (860) 827-2935
Fax: (860) 827-2950

October 29, 1998

Honorable Michael P. Peters
Mayor
City of Hartford
Municipal Building
550 Main Street
Hartford, CT 06103

Re: EM-SCLP-064-981027 - Springwich Cellular Limited Partnership notice of intent to modify an existing telecommunications facility located at 11 Mountain Road in Hartford, Connecticut.

Dear Mayor Peters:

On October 27, 1998, the Connecticut Siting Council (Council) received a request from Springwich Cellular Limited Partnership to modify an existing telecommunications facility located at 11 Mountain Road in Hartford, Connecticut for the placement of antennas to be used by the Town of West Hartford, pursuant to Regulations of Connecticut State Agencies Section 16-50j-72.

The Council will consider this item at the next meeting scheduled for Thursday, November 5, 1998, at 1:30 p.m. in Hearing Room Three, Ten Franklin Square, New Britain, Connecticut.

Please call me or inform the Council if you have any questions or comments regarding this modification of an existing facility.

Thank you for your cooperation and consideration.

Very truly yours,

A handwritten signature in black ink, appearing to read "Joel M. Rinebold".

Joel M. Rinebold
Executive Director

JMR/jlh

Enclosure: Notice of Intent

c: Robert R. Bouvier, Mayor, Town of West Hartford