

VICINITY MAP



Know what's below.  
Call before you dig.

THIS FACILITY SHALL MEET OR  
EXCEED ALL FAA AND FCC  
REGULATORY REQUIREMENTS.



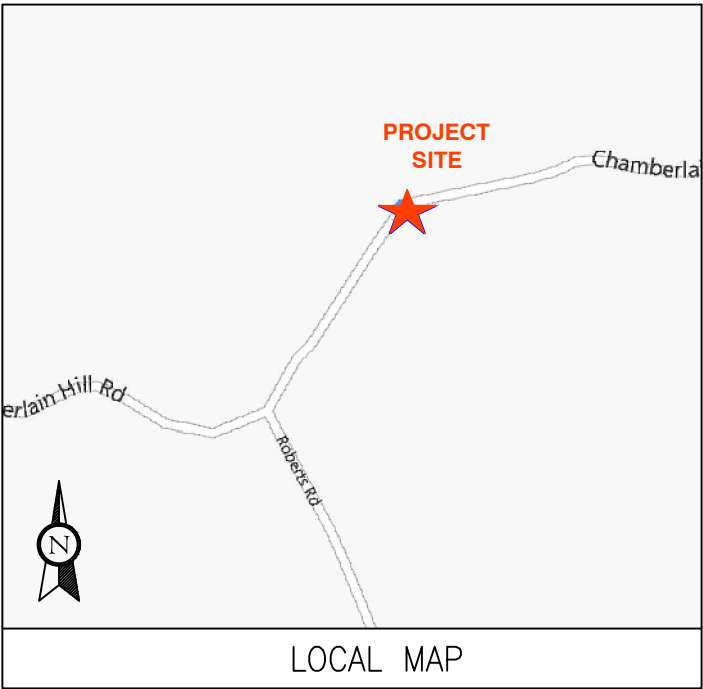
## BACKUP POWER PROJECT

### SITE IDENTIFICATION:

SITE NUMBER: 10113274

SITE NAME: HADDAM  
CHAMBERLAIN HILL ROAD

SITE ADDRESS: 285 CHAMBERLAIN HILL ROAD  
HADDAM, CT 06438



LOCAL MAP

### PROJECT DESCRIPTION:

THE PROPOSED PROJECT INCLUDES PLACING A 50 KW GENERATOR  
IN AN EXISTING CELLULAR TOWER COMPOUND.

CONTRACTOR TO VERIFY EXISTING MUX LOCATION. IF MUX LOCATION IS  
OUTSIDE OF AT&T EQUIPMENT AREA, CONTRACTOR IS TO FIELD VERIFY  
THE PRESENCE OF EMERGENCY BACK-UP SERVICE TO THE MUX. IF  
EMERGENCY BACK-UP SERVICE IS NOT PRESENT, CONTRACTOR IS TO  
ROUTE NEW SERVICE FROM AT&T EQUIPMENT AREA.

PROJECT TEAM		PROJECT SUMMARY	PROJECT NOTES	SHEET INDEX				
<div>ENGINEER</div> <div>ADVANCED ENGINEERING GROUP, P.C. 500 NORTH BROADWAY EAST PROVIDENCE, RI 02914 TEL: 401-354-2403</div> <div>CUSTOMER REPRESENTATIVE</div> <div>SABRE INDUSTRIES PEGGY POOR MARKET LEAD - AT&amp;T NE GENERATOR PROGRAM 13010 MORRIS ROAD, 6TH FLOOR, BLDG 1 ALPHARETTA, GA 30004 CELL 770-990-0137</div> <div>LANDLORD</div> <div>SBA PROPERTIES 5900 BROKEN SOUND PKWY, 2ND FLOOR BOCA RATON, FL 33487</div> <div>UTILITIES:</div> <div>POWER COMPANY:</div> <div>NORTHEAST UTILITIES (NU) P.O. BOX 270 HARTFORD, CT 06141-0270 PHONE: 1-800-286-5000</div>		<div>GEOGRAPHIC COORDINATES:</div> <div>LATITUDE: 41.495883 LONGITUDE: -72.618324</div> <div>CODE BLOCK:</div> <div>BUILDING CODE: 2009 INTERNATIONAL BUILDING CODE</div> <div>AT&amp;T OPS FOR POWER CUT OVER:</div> <div>NEED 24 HOUR NOTICE TO OPEN A TAP TICKET DIAL: 1-800-638-2822 SELECT OPTION 1, THEN, OPTION 2</div>	<div>1. THE FACILITY IS UNMANNED.</div> <div>2. A TECHNICIAN WILL VISIT THE SITE APPROXIMATELY ONCE A MONTH FOR ROUTINE INSPECTION AND MAINTENANCE.</div> <div>3. THE PROJECT WILL NOT RESULT IN ANY SIGNIFICANT LAND DISTURBANCE OR EFFECT OF STORM WATER DRAINAGE.</div> <div>4. NO SANITARY SEWER, POTABLE WATER OR TRASH DISPOSAL AS REQUIRED.</div> <div>5. HANDICAP ACCESS IS NOT REQUIRED.</div>	<div>SHT NO:</div> <div>T-1</div> <div>A-1</div> <div>A-2</div> <div>E-1</div> <div>E-2</div> <div>G-1</div>	<div>DESCRIPTION:</div> <div>TITLE SHEET, VICINITY MAP AND GENERAL INFORMATION</div> <div>COMPOUND PLAN</div> <div>CONCRETE PAD DETAILS</div> <div>WIRING DIAGRAM &amp; ATS MOUNTING DETAIL</div> <div>ELECTRICAL DETAILS</div> <div>GROUNDING DETAILS</div>	<div>REV:</div> <div>1</div> <div>1</div> <div>1</div> <div>1</div> <div>1</div> <div>1</div>	<div>DATE:</div> <div>11-26-2013</div> <div>11-26-2013</div> <div>11-19-2013</div> <div>11-26-2013</div> <div>11-26-2013</div> <div>11-26-2013</div>	<div>BY:</div> <div>CJG</div> <div>CJG</div> <div>CJG</div> <div>CJG</div> <div>CJG</div> <div>CJG</div>
		PROJECT LOCATION DIRECTIONS						
		TURN BACK ON RT-30 E / COCHITUATE RD						
		TAKE RAMP RIGHT FOR I-90 WEST TOWARD WORCESTER / SPRINGFIELD TOLL ROAD						
		AT EXIT 9, TAKE RAMP RIGHT FOR I-84 TOWARD NEW YORK CITY / HARTFORD						
		AT EXIT 57, TAKE RAMP LEFT FOR CT-15 SOUTH TOWARD CHARTER OAK BR / N.Y. CITY						
		KEEP STRAIGHT ONTO US-5 S / CT-15 S						
		AT EXIT 86, TAKE RAMP RIGHT FOR I-91 SOUTH TOWARD NEW HAVEN / N.Y. CITY						
		AT EXIT 22S, TAKE RAMP LEFT FOR CT-9 SOUTH TOWARD OLD SAYBROOK / MIDDLETOWN						
		KEEP STRAIGHT ONTO CT-9 S / CT-17 S						
		KEEP STRAIGHT ONTO CT-9 S						
		AT EXIT 11, TAKE RAMP RIGHT FOR CT-155 TOWARD DURHAM						
		TURN RIGHT ONTO CT-155 / RANDOLPH RD						
		TURN RIGHT ONTO SAYBROOK RD, AND THEN IMMEDIATELY BEAR RIGHT ONTO BARTHOLOMEW RD						
		TURN RIGHT ONTO CHAMBERLAIN HILL RD						
		ARRIVE AT 285 CHAMBERLAIN HILL RD, HIGGANUM, CT 06441						
		</						

**ADVANCED**  
ENGINEERING GROUP, P.C.  
Civil Engineering - Site Development  
Surveying - Telecommunications  
500 NORTH BROADWAY  
EAST PROVIDENCE, RI 02914  
PH: 401-354-2403 FAX:  
401-633-6354

**TRM**  
Convergent Network Solutions  
TOWER RESOURCE MANAGEMENT  
16 CHESTNUT STREET, SUITE 220  
FOXBORO, MA 02035  
WWW.TRMCOM.COM

**at&t**  
550 COCHITUATE ROAD, SUITE 13 & 14  
FRAMINGHAM, MA 01701-4681

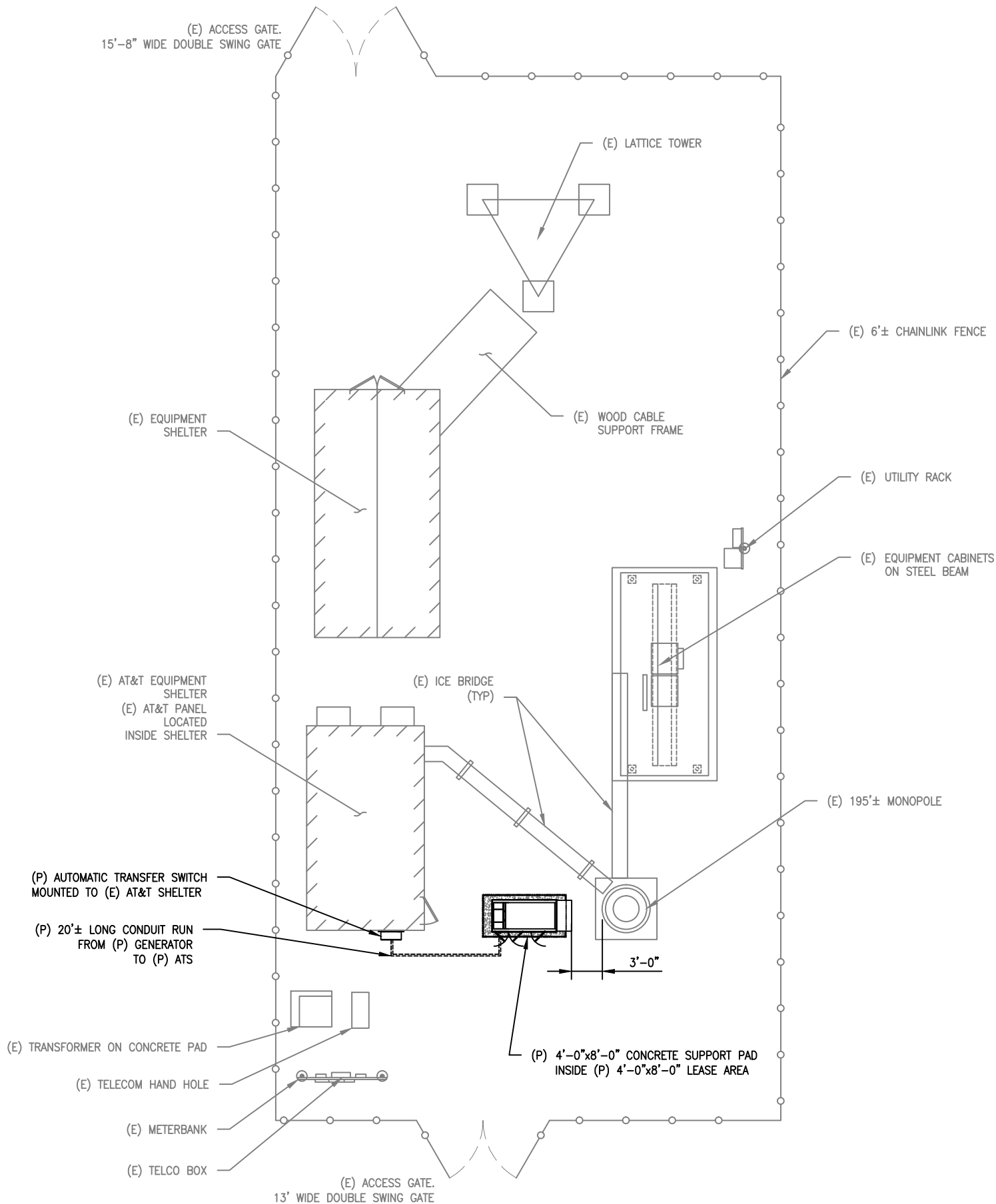
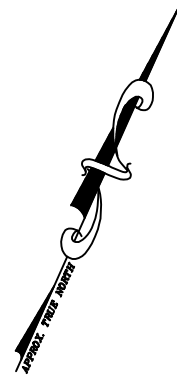
**Sabre Industries**  
13010 MORRIS ROAD, 6TH FLOOR, BLDG 1  
ALPHARETTA, GA 30004

SITE NUMBER:  
**10113274**  
  
SITE NAME:  
**HADDAM CHAMBERLAIN HILL ROAD**  
  
SITE ADDRESS:  
285 CHAMBERLAIN HILL ROAD  
HADDAM, CT 06438

THESE DRAWINGS AND/OR THE ACCOMPANYING SPECIFICATION AS INSTRUMENTS OF SERVICE ARE THE EXCLUSIVE PROPERTY OF ATC TOWER SERVICES, INC. THEIR USE AND PUBLICATION SHALL BE RESTRICTED TO THE ORIGINAL SITE FOR WHICH THEY ARE PREPARED. ANY USE OR DISCLOSURE OTHER THAN THAT WHICH RELATES TO ATC TOWER SERVICES, INC. OR THE SPECIFIED CARRIER IS STRICTLY TITLE TO THESE DOCUMENTS SHALL REMAIN THE PROHIBITED PROPERTY OF ATC TOWER SERVICES, INC. WHETHER OR NOT THE PROJECT IS EXECUTED. NEITHER THE ARCHITECT NOR THE ENGINEER WILL BE PROVIDING ON-SITE CONSTRUCTION REVIEW OF THIS CONTRACTOR(S) MUST VERIFY ALL DIMENSIONS AND ADVISE PROJECT ATC TOWER SERVICES, INC. OF ANY DISCREPANCIES. ANY PRIOR ISSUANCE OF THIS DRAWING IS SUPERSEDED BY THE LATEST VERSION ON FILE WITH ATC TOWER SERVICES, INC.

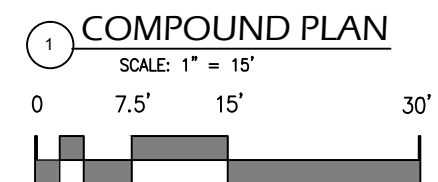
STAMP HERE:

DRAWN BY:	CJG
CHECKED BY:	SNA
DATE DRAWN:	11-26-13
JOB NO:	10113274
SHEET TITLE: TITLE SHEET, VICINITY MAP AND GENERAL INFORMATION	
SHEET NUMBER:	REV. #
T-1	1



NOTE:  
A SITE VISIT/SURVEY WAS NOT CONDUCTED BY  
ADVANCED ENGINEERING GROUP, P.C.  
SITE INFORMATION AND PLANS ARE BASED UPON  
INFORMATION PROVIDED BY CLIENT

CONTRACTOR TO VERIFY EXISTING MUX LOCATION. IF MUX LOCATION IS  
OUTSIDE OF AT&T EQUIPMENT AREA, CONTRACTOR IS TO FIELD VERIFY  
THE PRESENCE OF EMERGENCY BACK-UP SERVICE TO THE MUX. IF  
EMERGENCY BACK-UP SERVICE IS NOT PRESENT, CONTRACTOR IS TO  
ROUTE NEW SERVICE FROM AT&T EQUIPMENT AREA.



**ADVANCED**  
ENGINEERING GROUP, P.C.  
Civil Engineering - Site Development  
Surveying - Telecommunications  
500 NORTH BROADWAY  
EAST PROVIDENCE, RI 02914  
PH: 401-354-2403 FAX:  
401-633-6354

**TRM**  
Convergent Network Solutions  
TOWER RESOURCE MANAGEMENT  
16 CHESTNUT STREET, SUITE 220  
FOXBORO, MA 02035  
WWW.TRMCOM.COM

**at&t**  
550 COCHITUATE ROAD, SUITE 13 & 14  
FRAMINGHAM, MA 01701-4681

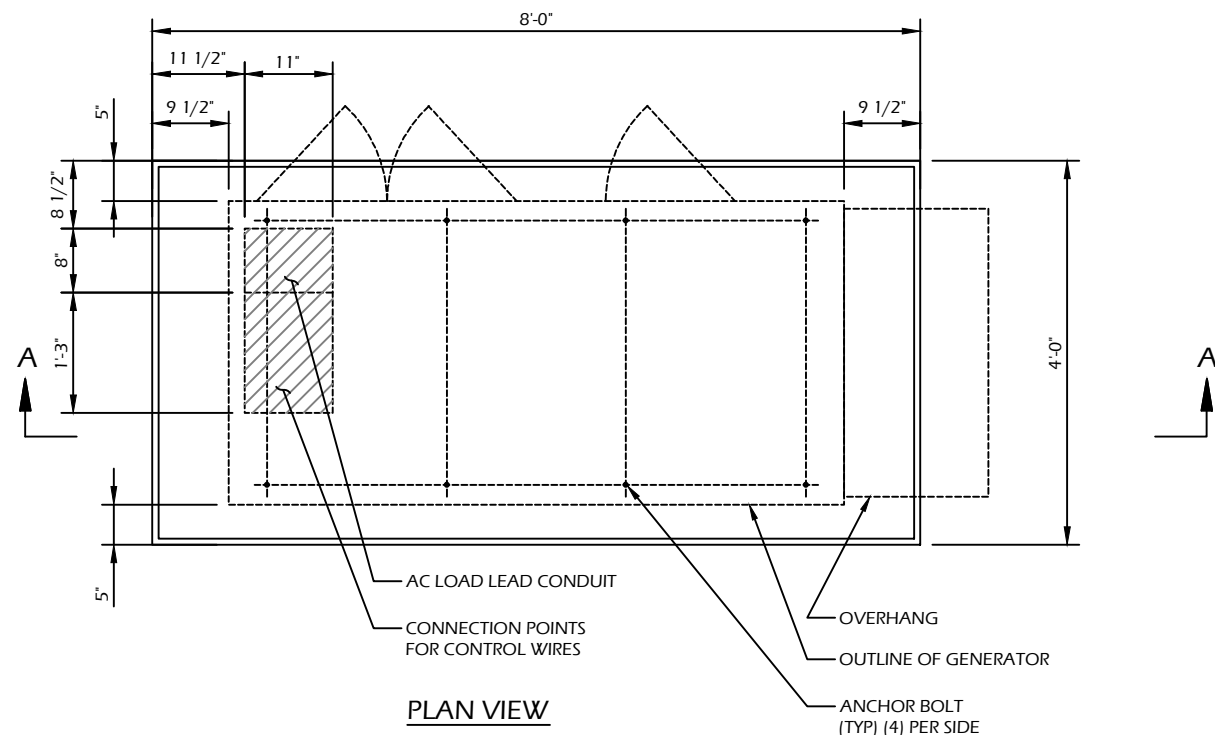
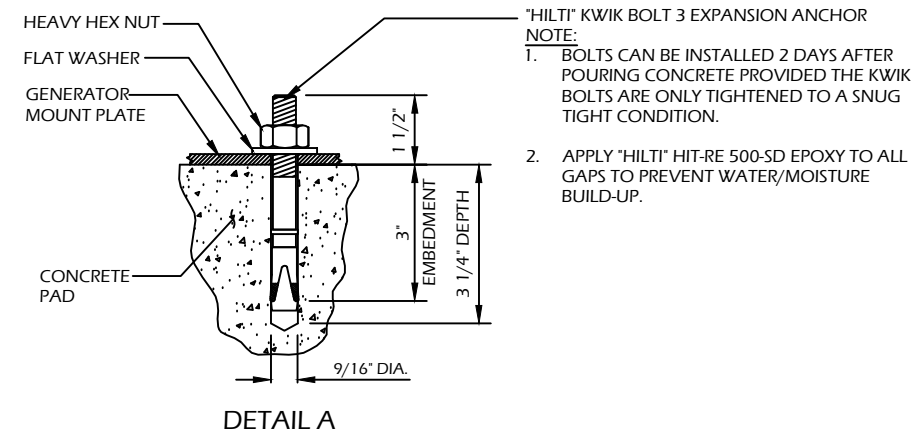
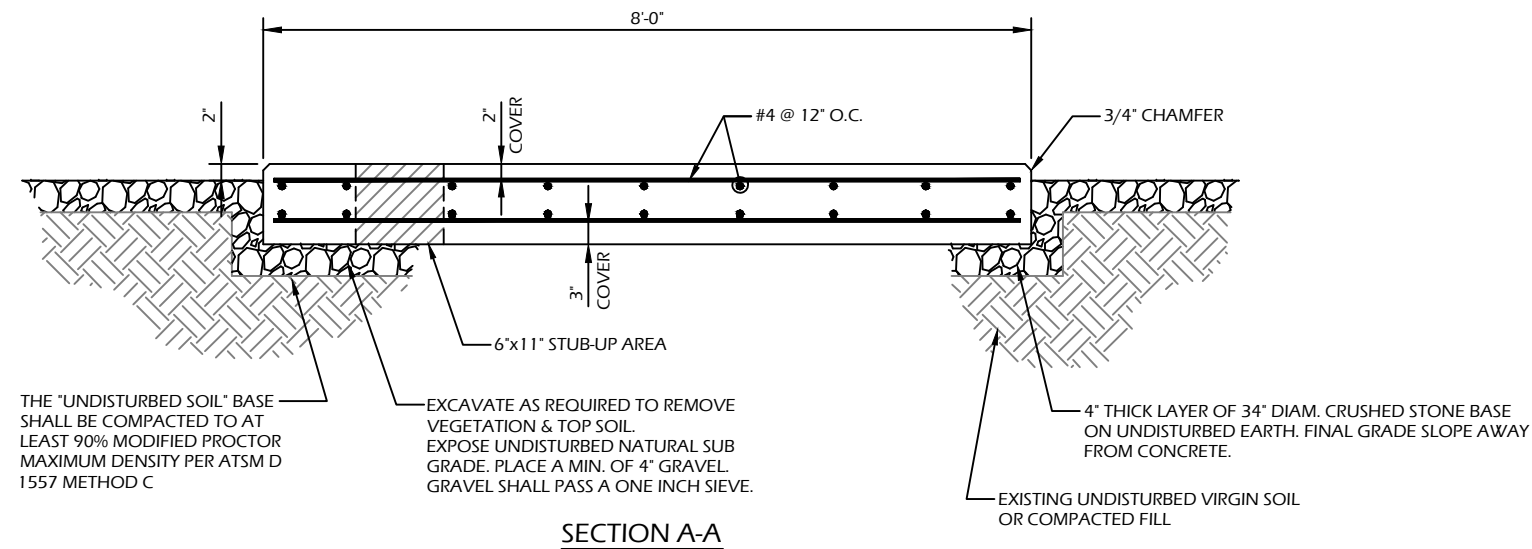
**Sabre Industries**  
13010 MORRIS ROAD, 6TH FLOOR, BLDG 1  
ALPHARETTA, GA 30004

SITE NUMBER:  
**10113274**  
SITE NAME:  
**HADDAM CHAMBERLAIN HILL  
ROAD**

SITE ADDRESS:  
285 CHAMBERLAIN HILL ROAD  
HADDAM, CT 06438

THESE DRAWINGS AND/OR THE ACCOMPANYING SPECIFICATION AS  
INSTRUMENTS OF SERVICE ARE THE EXCLUSIVE PROPERTY OF ATC  
TOWER SERVICES, INC. THEIR USE AND PUBLICATION SHALL BE  
RESTRICTED TO THE ORIGINAL SITE FOR WHICH THEY ARE PREPARED.  
ANY USE OR DISCLOSURE OTHER THAN THAT WHICH RELATES TO ATC  
TOWER SERVICES, INC. OR THE SPECIFIED CARRIER IS STRICTLY TITLE  
TO THESE DOCUMENTS SHALL REMAIN THE PROHIBITED PROPERTY OF  
ATC TOWER SERVICES, INC. WHETHER OR NOT THE PROJECT IS  
EXECUTED. NEITHER THE ARCHITECT NOR THE ENGINEER WILL BE  
PROVIDING ON-SITE CONSTRUCTION REVIEW OF THIS CONTRACTOR(S)  
MUST VERIFY ALL DIMENSIONS AND ADVISE PROJECT ATC TOWER  
SERVICES, INC. OF ANY DISCREPANCIES. ANY PRIOR ISSUANCE OF  
THIS DRAWING IS SUPERSEDED BY THE LATEST VERSION ON FILE WITH  
ATC TOWER SERVICES, INC.

STAMP HERE:	
DRAWN BY:	CJG
CHECKED BY:	SNA
DATE DRAWN:	11-26-13
JOB NO:	10113274
SHEET TITLE:	
COMPOUND PLAN	
SHEET NUMBER:	REV. #
A-1	1



#### CONCRETE PAD CONSTRUCTION NOTES

1. ALL REBAR (HORIZONTAL & VERTICAL) SHALL BE SECURELY WIRE TIED TO PREVENT DISPLACEMENT DURING POURING OF CONCRETE.
2. CONCRETE TO HAVE A MINIMUM COMPRESSIVE STRENGTH OF 4000 PSI.
3. REINFORCED CONCRETE CONSTRUCTION AND MATERIALS SHALL BE IN ACCORDANCE WITH ACI STANDARDS 318.
4. MINIMUM CONCRETE COVER OVER REBAR IS 2 1/2".
5. REINFORCING MATERIAL SHALL BE IN ACCORDANCE WITH ASTM SPECIFICATION A615-85.

#### CONCRETE PAD AND EMBEDMENT TOLERANCES

1. CONCRETE DIMENSIONS: PLUS OR MINUS 1/4".
2. REINFORCING STEEL PLACEMENT: PLUS OR MINUS 1/4" INCLUDING CONCRETE COVER.

#### NOTES

1. FOUNDATION WAS DESIGNED BY ASSUMING ALLOWABLE SOIL BEARING CAPACITY OF 1000 PSI. THE SOIL BEARING CAPACITY FOR EACH SITE MUST BE VERIFIED USING THE SITE SPECIFIC GEOTECH REPORT. IF SHALLOW GROUNDWATER ( $\leq 3$  FT.) WAS REPORTED, A FURTHER REVIEW OF THE DESIGN OR SPECIAL DESIGN MAY BE REQUIRED.
2. THE SOIL UNDERNEATH THE CONCRETE PAD MUST BE FREE OF ORGANIC MATTER OR OTHER DELETERIOUS SUBSTANCES, AND SHOULD BE COMPACTED AND LEVELED BEFORE PLACING THE FOUNDATION.
3. CONCRETE SLUMPS: 1"~3".
4. CONCRETE VOLUME: 2.4 CUBIC YARDS.

#### DESIGN

1. MAXIMUM DESIGN BASIC WIND SPEED (3-SECOND GUST): 155 MPH FOR GENERATOR MODELS SD050 AND SD080.

PRE-CAST GENERATOR PAD

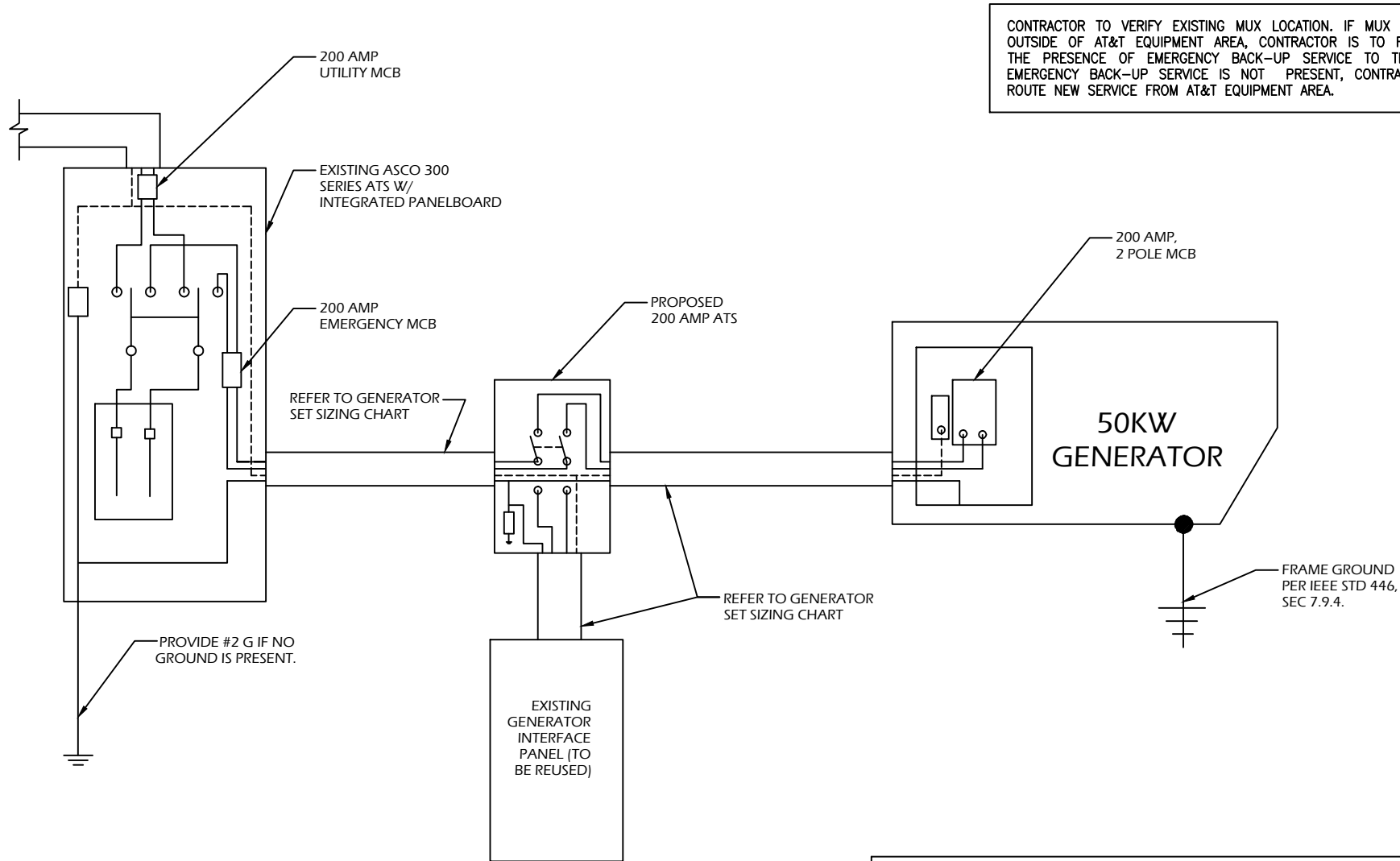
SITE NUMBER:  
**10113274**  
SITE NAME:  
**HADDAM CHAMBERLAIN HILL ROAD**

SITE ADDRESS:  
285 CHAMBERLAIN HILL ROAD  
HADDAM, CT 06438

THESE DRAWINGS AND/OR THE ACCOMPANYING SPECIFICATION AS INSTRUMENTS OF SERVICE ARE THE EXCLUSIVE PROPERTY OF ATC TOWER SERVICES, INC. THEIR USE AND PUBLICATION SHALL BE RESTRICTED TO THE ORIGINAL SITE FOR WHICH THEY ARE PREPARED. ANY USE OR DISCLOSURE OTHER THAN THAT WHICH RELATES TO ATC TOWER SERVICES, INC. OR THE SPECIFIED CARRIER IS STRICTLY TITLE TO THESE DOCUMENTS SHALL REMAIN THE PROHIBITED PROPERTY OF ATC TOWER SERVICES, INC. WHETHER OR NOT THE PROJECT IS EXECUTED. NEITHER THE ARCHITECT NOR THE ENGINEER WILL BE PROVIDING ON-SITE CONSTRUCTION REVIEW OF THIS CONTRACTOR(S) MUST VERIFY ALL DIMENSIONS AND ADVISE PROJECT ATC TOWER SERVICES, INC. OF ANY DISCREPANCIES. ANY PRIOR ISSUANCE OF THIS DRAWING IS SUPERSEDED BY THE LATEST VERSION ON FILE WITH ATC TOWER SERVICES, INC.

STAMP HERE:	
DRAWN BY:	CJG
CHECKED BY:	SNA
DATE DRAWN:	11-26-13
JOB NO:	10113274
SHEET TITLE: <b>CONCRETE PAD DETAILS</b>	
SHEET NUMBER:	REV. #
<b>A-2</b>	<b>1</b>





1 SINGLE CARRIER WIRING DIAGRAM  
SCALE: NOT TO SCALE

FEEDER SIZING CHART FOR GENERATOR					
GEN SET SIZE	VOLTS - PHASE	PRIME RATING KW - AMPS	SIZE OF INLINE BREAKER (AT GENERATOR)	MAIN BREAKER SIZE SERVING ANCHOR TENANT:	FEEDER SIZES FROM GEN SET BREAKER TO DISTRIBUTION PANEL / ATS.
50KW	120/240V - 1-PH	48KW - 200A	200A	200A 2-P C/B INTEGRAL TO GEN SET	3#3/0, 1#6G, IN 2"C

NOTES:

- SERVICE VOLTAGE FOR EACH CARRIER IS 120/240 1-PHASE, AND SERVICE SIZES ARE TYPICAL 200A PER CARRIER.
- DISTRIBUTION PANEL IS 800A, 120/240V 1-PHASE, WITH 200A C/B FOR THE LISTED CARRIER OUTPUT. PANEL HAS (3) 200A BREAKER SPACES FOR FUTURE CARRIERS.
- AUTOMATIC TRANSFER SWITCH (ATS) ARE 200A 2-POLES, 120/240V 1-PHASE WITH SOLID NEUTRAL PER CARRIER.
- ALL ELECTRICAL EQUIPMENT IS NEMA 3R RATED.
- THE GENERATOR ELECTRICAL LOADS ARE ADEQUATE FOR THE CONNECTED LOADS.
- ALL EQUIPMENT FURNISHED SHALL BE PROVIDED WITH EQUIPMENT RATED TO WITHSTAND FAULT CURRENT AVAILABLE AT PROJECT SITE.
- ALL WIRE AND PANEL BUSSING SHALL BE COPPER UNLESS ALLOWED ELSEWHERE IN THIS DOCUMENT SET, WIRE SIZES ARE BASED ON COPPER.
- A NEW SET OF PLANS WILL BE PROVIDED AND SUBMITTED FOR ADDITIONAL CARRIERS.
- ALL WORK SHALL CONFORM WITH THE CURRENT VERSION OF THE NEC AND ALL OTHER APPLICABLE CODES.
- FIRST OVER-CURRENT PROTECTION DEVICE IS INTEGRAL TO GENERATOR. FEEDER SIZES INDICATED IN TABLE ABOVE ARE DOWNSTREAM OF THE FIRST OVER-CURRENT PROTECTION DEVICE.
- INLINE BREAKER AT GENERATOR IS FACTORY INSTALLED, AND IS THE MANUFACTURER'S RECOMMENDED SIZE.

2 GENERATOR SET SIZING CHARTS

NOTES:

- ALL UNDERGROUND CABLE TO BE BURIED AT 36" MIN. SHIELD TAPED AT 12" AND STUBBED OUT OF GROUND IN SCH 40 PVC CONDUIT.
- LOW VOLTAGE CONTROL WIRE PROVIDED BY MONITORING PROVIDER IN SEPARATE 1/2" CONDUIT FROM ATS TO GENERATOR.
- BTS SITES: THE TENANT CONTRACTOR TO COMPLETE CUSTOMER ELECTRICAL CONDUIT TO CUSTOMER METER PER STANDARD COLLOCATION INSTALL.
- TENANT CONTRACTOR HAS NOTHING TO INSTALL OR COMPLETE FOR ATC SHARED GEN DURING CUSTOMER COLLOCATION ON ATC TOWER.
- ATC SHARED GEN INSTALL IS COMPLETED AFTER CUSTOMER TOWER COLLOCATION IS COMPLETE WITH LOAD ON CUSTOMER METER.
- ALL CONDUCTORS ARE SIZED FOR COPPER, BUT ALUMINUM CONDUCTORS ARE ALLOWED FOR FEEDERS PROVIDED THEY ARE UPSIZED PER NEC TABLE 310.16.
- ALL ELECTRICAL WORK SHALL BE PER THE NATIONAL ELECTRICAL CODE (NFPA 70) AND ALL APPLICABLE LOCAL CODES.
- MAINTAIN 36" CLEAR WORKSPACE IN FRONT OF METER, TRANSFER SWITCH, GENERATOR, PANELS, ETC.
- 800A PANEL HAS A COMMON NEUTRAL BUS. NEUTRALS BACK TO EACH CARRIER METER ARE SIZED ACCORDING TO THE DISTRIBUTION PANEL BRANCH BREAKER RATING. NEUTRAL IS BONDED AT THE PRIMARY SERVICE MAIN BONDING JUMPER ONLY.
- GENERATOR CONTROLS AND SENSORS SHALL HAVE GFCI SENSING CAPABILITY PER NEC 700-6(D).

**ADVANCED**  
ENGINEERING GROUP, P.C.  
Civil Engineering - Site Development  
Surveying - Telecommunications  
500 NORTH BROADWAY  
EAST PROVIDENCE, RI 02914  
PH: 401-354-2403 FAX:  
401-633-6354

**TRM**  
Convergent Network Solutions  
TOWER RESOURCE MANAGEMENT  
16 CHESTNUT STREET, SUITE 220  
FOXBORO, MA 02035  
WWW.TRMCOM.COM

**at&t**  
550 COCHITUATE ROAD, SUITE 13 & 14  
FRAMINGHAM, MA 01701-4681

**Sabre Industries**  
13010 MORRIS ROAD, 6TH FLOOR, BLDG 1  
ALPHARETTA, GA 30004

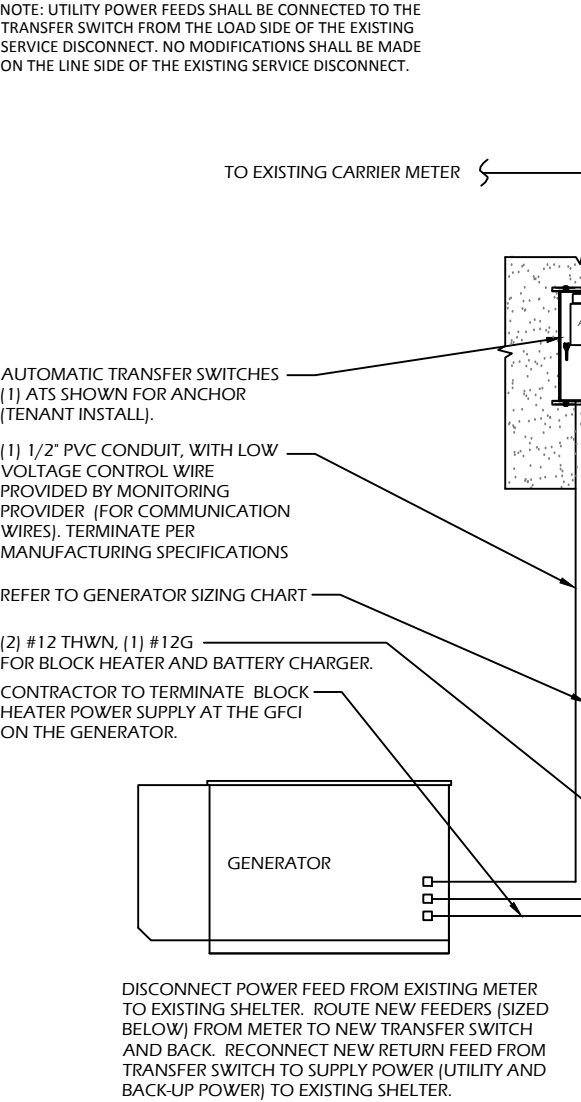
SITE NUMBER:  
**10113274**

SITE NAME:  
**HADDAM CHAMBERLAIN HILL ROAD**

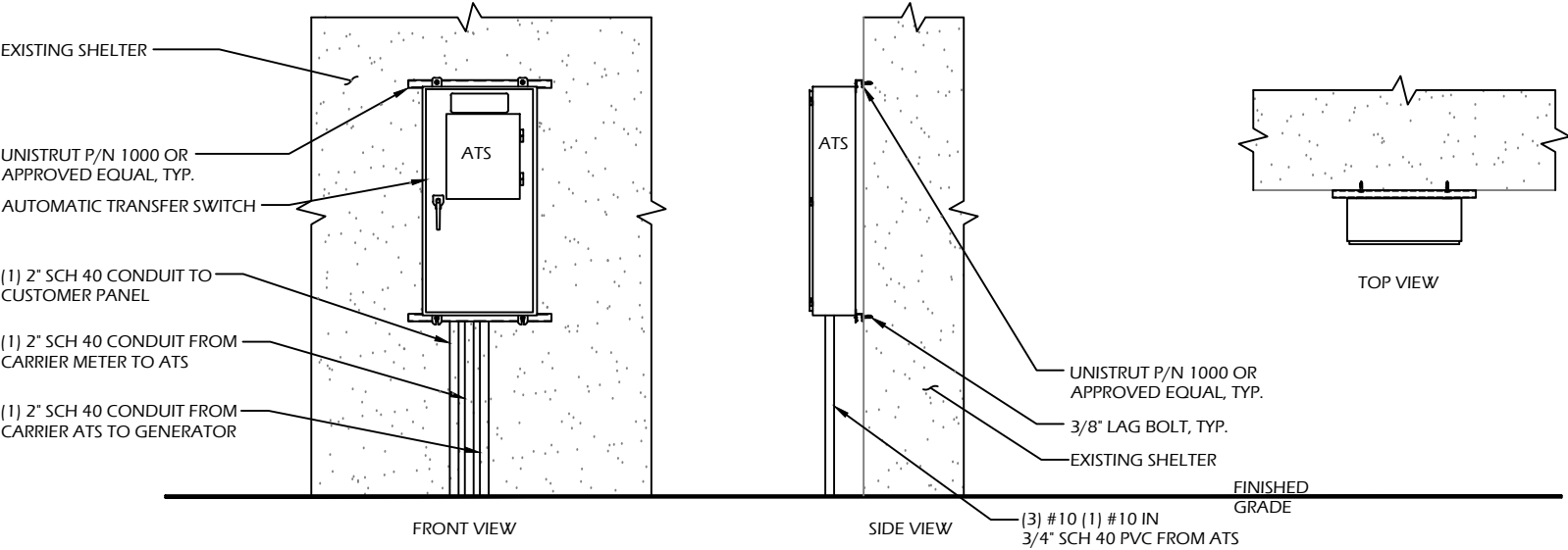
SITE ADDRESS:  
285 CHAMBERLAIN HILL ROAD  
HADDAM, CT 06438

THESE DRAWINGS AND/OR THE ACCOMPANYING SPECIFICATION AS INSTRUMENTS OF SERVICE ARE THE EXCLUSIVE PROPERTY OF ATC TOWER SERVICES, INC. THEIR USE AND PUBLICATION SHALL BE RESTRICTED TO THE ORIGINAL SITE FOR WHICH THEY ARE PREPARED. ANY USE OR DISCLOSURE OTHER THAN THAT WHICH RELATES TO ATC TOWER SERVICES, INC. OR THE SPECIFIED CARRIER IS STRICTLY TITLE TO THESE DOCUMENTS SHALL REMAIN THE PROHIBITED. PROPERTY OF ATC TOWER SERVICES, INC. WHETHER OR NOT THE PROJECT IS EXECUTED. NEITHER THE ARCHITECT NOR THE ENGINEER WILL BE PROVIDING ON-SITE CONSTRUCTION REVIEW OF THIS CONTRACTOR(S) MUST VERIFY ALL DIMENSIONS AND ADVISE PROJECT ATC TOWER SERVICES, INC. OF ANY DISCREPANCIES. ANY PRIOR ISSUANCE OF THIS DRAWING IS SUPERSEDED BY THE LATEST VERSION ON FILE WITH ATC TOWER SERVICES, INC.

STAMP HERE:	
DRAWN BY:	CJG
CHECKED BY:	SNA
DATE DRAWN:	11-26-13
JOB NO:	10113274
SHEET TITLE: WIRING DIAGRAM & H-FRAME LAYOUT	
SHEET NUMBER: E-1	REV. # 1



1 METER CONFIGURATION



2 ATS MOUNTING DETAIL  
SCALE: NOT TO SCALE

**ADVANCED**  
ENGINEERING GROUP, P.C.  
Civil Engineering - Site Development  
Surveying - Telecommunications  
500 NORTH BROADWAY  
EAST PROVIDENCE, RI 02914  
PH: 401-354-2403 FAX:  
401-633-6354

**TRM**  
Convergent Network Solutions  
TOWER RESOURCE MANAGEMENT  
16 CHESTNUT STREET, SUITE 220  
FOXBORO, MA 02035  
WWW.TRMCOM.COM

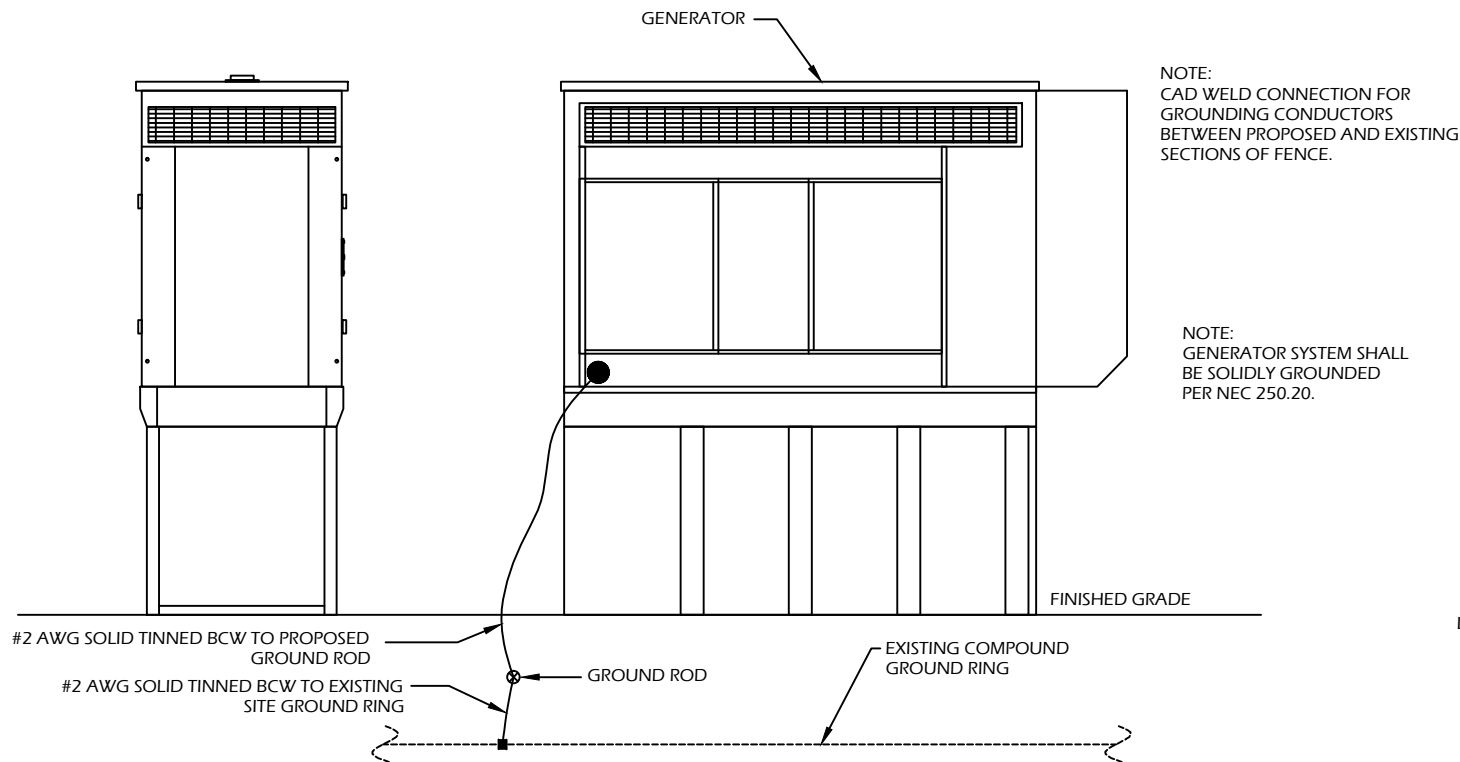
**at&t**  
550 COCHITUATE ROAD, SUITE 13 & 14  
FRAMINGHAM, MA 01701-4681

**Sabre Industries**  
13010 MORRIS ROAD, 6TH FLOOR, BLDG 1  
ALPHARETTA, GA 30004

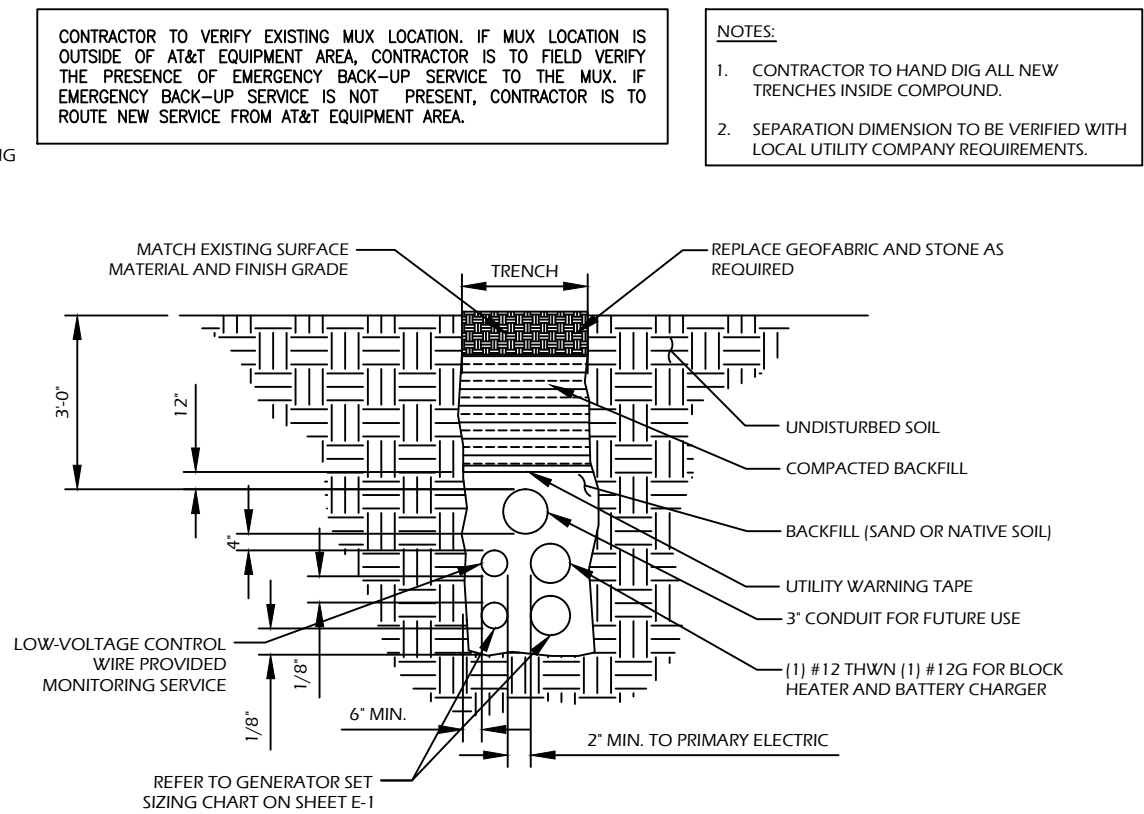
SITE NUMBER:  
**10113274**  
SITE NAME:  
**HADDAM CHAMBERLAIN HILL ROAD**  
SITE ADDRESS:  
285 CHAMBERLAIN HILL ROAD  
HADDAM, CT 06438

THESE DRAWINGS AND/OR THE ACCOMPANYING SPECIFICATION AS INSTRUMENTS OF SERVICE ARE THE EXCLUSIVE PROPERTY OF ATC TOWER SERVICES, INC. THEIR USE AND PUBLICATION SHALL BE RESTRICTED TO THE ORIGINAL SITE FOR WHICH THEY ARE PREPARED. ANY USE OR DISCLOSURE OTHER THAN THAT WHICH RELATES TO ATC TOWER SERVICES, INC. OR THE SPECIFIED CARRIER IS STRICTLY TITLE TO THESE DOCUMENTS SHALL REMAIN THE PROHIBITED. PROPERTY OF ATC TOWER SERVICES, INC. WHETHER OR NOT THE PROJECT IS EXECUTED. NEITHER THE ARCHITECT NOR THE ENGINEER WILL BE PROVIDING ON-SITE CONSTRUCTION REVIEW OF THIS CONTRACTOR(S) MUST VERIFY ALL DIMENSIONS AND ADVISE PROJECT ATC TOWER SERVICES, INC. OF ANY DISCREPANCIES. ANY PRIOR ISSUANCE OF THIS DRAWING IS SUPERSEDED BY THE LATEST VERSION ON FILE WITH ATC TOWER SERVICES, INC.

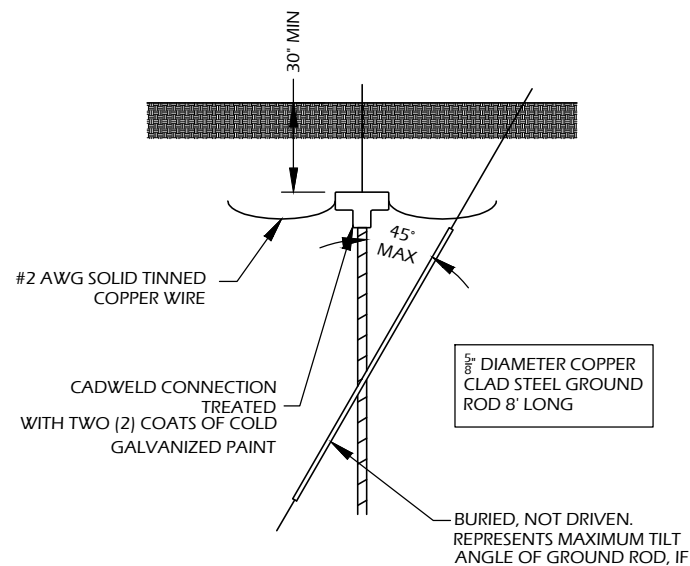
STAMP HERE:	
DRAWN BY:	CJG
CHECKED BY:	SNA
DATE DRAWN:	11-26-13
JOB NO:	10113274
SHEET TITLE: ELECTRICAL/MOUNTING DETAILS	
SHEET NUMBER: E-2	REV. # 1



1 GENERATOR ELEVATION

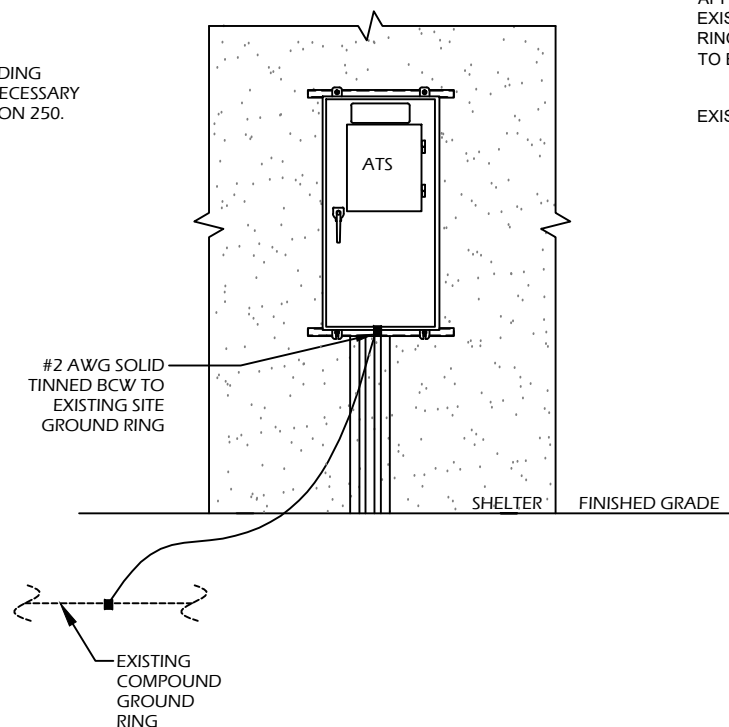


2 TRENCH DETAIL  
SCALE: NOT TO SCALE



4 GROUND ROD DETAIL

NOTE: PROVIDE BONDING JUMPERS AS NECESSARY PER NEC SECTION 250.



3 ATS ELEVATION

5 GENERATOR GROUND RING DETAIL

- NOTES:
1. ELECTRICIAN SHALL VERIFY THAT GENERATOR IS INSTALLED SO THAT ELECTRICAL BACK-FEEDS ARE NOT POSSIBLE.
  2. ELECTRICIAN SHALL VERIFY THAT GROUNDING IS INSTALLED SO THAT NO CIRCULATING CURRENTS ARE POSSIBLE BY FOLLOWING DETAIL 3 SO GROUNDING IS CONNECTED TO EXISTING TOWER GROUND FIELD.
  3. ALL LIGHTNING GROUNDING SHALL BE FREE OF KINKS AND SHALL HAVE LONG RADIUS BENDS (MINIMUM 8").
  4. ALL GROUNDING SHOULD BE INSTALLED PER CURRENT NEC, SECTION 250.
  5. USE #2 AWG SOLID TINNED COPPER WIRE TO EXISTING (2) FENCE POSTS AND CADWELD FROM GENERATOR GROUND RING

- NOTES:
- 1) GENERATOR TO BE CONNECTED TO EXISTING GROUNDING RING (MIN 1 LOCATION).
  - 2) ALL EXISTING FENCE POST/EQUIPMENT WITHIN 6' OF PROPOSED EQUIPMENT IS TO BE GROUNDED TO EXISTING GROUNDING RING. (CADWELD CONNECTIONS)
  - 3) GENERATOR SYSTEM SHALL BE SOLIDLY GROUNDED PER NEC 250.20.

**ADVANCED**  
ENGINEERING GROUP, P.C.  
Civil Engineering - Site Development  
Surveying - Telecommunications  
500 NORTH BROADWAY  
EAST PROVIDENCE, RI 02914  
PH: 401-354-2403 FAX:  
401-633-6354

**TRM**  
Convergent Network Solutions  
TOWER RESOURCE MANAGEMENT  
16 CHESTNUT STREET, SUITE 220  
FOXBORO, MA 02035  
WWW.TRMCOM.COM

**at&t**  
550 COCHITUATE ROAD, SUITE 13 & 14  
FRAMINGHAM, MA 01701-4681

**Sabre Industries**  
13010 MORRIS ROAD, 6TH FLOOR, BLDG 1  
ALPHARETTA, GA 30004

SITE NUMBER:  
**10113274**

SITE NAME:  
**HADDAM CHAMBERLAIN HILL ROAD**

SITE ADDRESS:  
285 CHAMBERLAIN HILL ROAD  
HADDAM, CT 06438

THESE DRAWINGS AND/OR THE ACCOMPANYING SPECIFICATION AS INSTRUMENTS OF SERVICE ARE THE EXCLUSIVE PROPERTY OF ATC TOWER SERVICES, INC. THEIR USE AND PUBLICATION SHALL BE RESTRICTED TO THE ORIGINAL SITE FOR WHICH THEY ARE PREPARED. ANY USE OR DISCLOSURE OTHER THAN THAT WHICH RELATES TO ATC TOWER SERVICES, INC. OR THE SPECIFIED CARRIER IS STRICTLY TITLE TO THESE DOCUMENTS SHALL REMAIN THE PROHIBITED. PROPERTY OF ATC TOWER SERVICES, INC. WHETHER OR NOT THE PROJECT IS EXECUTED. NEITHER THE ARCHITECT NOR THE ENGINEER WILL BE PROVIDING ON-SITE CONSTRUCTION REVIEW OF THIS CONTRACTOR(S) MUST VERIFY ALL DIMENSIONS AND ADVISE PROJECT. ATC TOWER SERVICES, INC. OF ANY DISCREPANCIES. ANY PRIOR ISSUANCE OF THIS DRAWING IS SUPERSEDED BY THE LATEST VERSION ON FILE WITH ATC TOWER SERVICES, INC.

STAMP HERE:	
DRAWN BY:	CJG
CHECKED BY:	SNA
DATE DRAWN:	11-26-13
JOB NO:	10113274
SHEET TITLE: GROUNDING DETAILS	
SHEET NUMBER: G-1	REV. # 1