

Date: **October 8, 2021**

Darcy Tarr  
Crown Castle  
3530 Toringdon Way, Suite 300  
Charlotte, NC 28277  
704-405-6589



Trylon  
1825 W. Walnut Hill Lane,  
Suite 302  
Irving, TX 75038  
214-930-1730

**Subject:** **Mount Replacement Analysis Report**

**Carrier Designation:** **T-Mobile Anchor**  
**Carrier Site Number:** CTNH510A  
**Carrier Site Name:** N/A

**Crown Castle Designation:** **Crown Castle BU Number:** 842864  
**Crown Castle Site Name:** GUILFORD SW  
**Crown Castle JDE Job Number:** 686820  
**Crown Castle Order Number:** 586788 Rev. 1

**Engineering Firm Designation:** **Trylon Report Designation:** 193334

**Site Data:** **201 Granite Road, Guilford, New Haven County, CT, 06437**  
**Latitude 41°17'31.14" Longitude -72°43'58.28"**

**Structure Information:** **Tower Height & Type:** **109.0 ft Monopole**  
**Mount Elevation:** **87.0 ft**  
**Mount Type:** **12.5 ft Platform**

Dear Darcy Tarr,

Trylon is pleased to submit this "**Mount Replacement Analysis Report**" to determine the structural integrity of T-Mobile's antenna mounting system with the proposed appurtenance and equipment addition on the abovementioned supporting tower structure. Analysis of the existing supporting tower structure is to be completed by others and therefore is not part of this analysis. Analysis of the antenna mounting system as a tie-off point for fall protection or rigging is not part of this document.

The purpose of the analysis is to determine acceptability of the mount stress level. Based on our analysis we have determined the mount stress level to be:

**Platform** **Sufficient\***  
**\*Sufficient upon completion of the changes listed in the 'Recommendations' section of this report.**

This analysis utilizes an ultimate 3-second gust wind speed of 130 mph as required by the 2018 Connecticut State Building Code. Applicable Standard references and design criteria are listed in Section 2 - Analysis Criteria.

Mount analysis prepared by: Jordan Everson, E.I.T.

Respectfully Submitted by:  
Cliff Abernathy, P.E.



## TABLE OF CONTENTS

### 1) INTRODUCTION

### 2) ANALYSIS CRITERIA

Table 1 - Proposed Equipment Configuration

### 3) ANALYSIS PROCEDURE

Table 2 - Documents Provided

3.1) Analysis Method

3.2) Assumptions

### 4) ANALYSIS RESULTS

Table 3 - Mount Component Stresses vs. Capacity

4.1) Recommendations

### 5) APPENDIX A

Wire Frame and Rendered Models

### 6) APPENDIX B

Software Input Calculations

### 7) APPENDIX C

Software Analysis Output

### 8) APPENDIX D

Additional Calculations

### 9) APPENDIX E

Supplemental Drawings

### 1) INTRODUCTION

This is a proposed 3 sector 12.5 ft Platform, designed by Site Pro 1.

### 2) ANALYSIS CRITERIA

<b>Building Code:</b>	2015 IBC
<b>TIA-222 Revision:</b>	TIA-222-H
<b>Risk Category:</b>	II
<b>Ultimate Wind Speed:</b>	130 mph
<b>Exposure Category:</b>	B
<b>Topographic Factor at Base:</b>	1.0
<b>Topographic Factor at Mount:</b>	1.0
<b>Ice Thickness:</b>	1.5 in
<b>Wind Speed with Ice:</b>	50 mph
<b>Seismic S<sub>s</sub>:</b>	0.176
<b>Seismic S<sub>1</sub>:</b>	0.061
<b>Live Loading Wind Speed:</b>	30 mph
<b>Man Live Load at Mid/End-Points:</b>	250 lb
<b>Man Live Load at Mount Pipes:</b>	500 lb

**Table 1 - Proposed Equipment Configuration**

Mount Centerline (ft)	Antenna Centerline (ft)	Number of Antennas	Antenna Manufacturer	Antenna Model	Mount / Modification Details
87.0	86.0	3	ERICSSON	AIR6449 B41_T-MOBILE	12.5 ft Platform [Site Pro 1 RMQP-496 w/HRK12]
		3	RFS/CELWAVE	APXVAARR24_43-U-NA20	
		3	ERICSSON	RADIO 4449 B12/B71	
		3	ERICSSON	RADIO 4460 B2/B25 B66_TMO	

### 3) ANALYSIS PROCEDURE

**Table 2 - Documents Provided**

Document	Remarks	Reference	Source
Crown Application	T-Mobile Application	586788 Rev. 0	CCI Sites
Mount Manufacturer Drawings	Site Pro 1	RMQP-496	Trylon
Mount Manufacturer Drawings	Site Pro 1	HRK12	Trylon

### 3.1) Analysis Method

RISA-3D (Version 17.0.4), a commercially available analysis software package, was used to create a three-dimensional model of the antenna mounting system and calculate member stresses for various loading cases.

A tool internally developed, using Microsoft Excel, by Tylon was used to calculate wind loading on all appurtenances, dishes, and mount members for various load cases. Selected output from the analysis is included in Appendix B.

This analysis was performed in accordance with Crown Castle's ENG-SOW-10208 *Tower Mount Analysis* (Revision B).

### 3.2) Assumptions

- 1) The antenna mounting system was properly fabricated, installed and maintained in good condition in accordance with its original design and manufacturer's specifications.
- 2) The configuration of antennas, mounts, and other appurtenances are as specified in Table 1 and the referenced drawings.
- 3) All member connections are assumed to have been designed to meet or exceed the load carrying capacity of the connected member unless otherwise specified in this report.
- 4) The analysis will be required to be revised if the existing conditions in the field differ from those shown in the above-referenced documents or assumed in this analysis. No allowance was made for any damaged, missing, or rusted members.
- 5) Prior structural modifications to the tower mounting system are assumed to be installed as shown per available data.
- 6) Steel grades have been assumed as follows, unless noted otherwise:
 

Channel, Solid Round, Angle, Plate	ASTM A36 (GR 36)
HSS (Rectangular)	ASTM A500 (GR B-46)
Pipe	ASTM A53 (GR 35)
Connection Bolts	ASTM A325

This analysis may be affected if any assumptions are not valid or have been made in error. Tylon should be notified to determine the effect on the structural integrity of the antenna mounting system.

## 4) ANALYSIS RESULTS

**Table 3 - Mount Component Stresses vs. Capacity (Platform, All Sectors)**

Notes	Component	Critical Member	Centerline (ft)	% Capacity	Pass / Fail
1, 2	Mount Pipe(s)	MP7	87.0	57.2	Pass
	Horizontal(s)	H2		13.3	Pass
	Standoff(s)	M1		31.0	Pass
	Bracing(s)	M84		27.3	Pass
	Handrail(s)	M71		37.5	Pass
	Mount Connection(s)	--		25.5	Pass

<b>Structure Rating (max from all components) =</b>	<b>57.2%</b>
---	--------------

Notes:

- 1) See additional documentation in "Appendix C - Software Analysis Output" for calculations supporting the % capacity consumed.
- 2) Rating per TIA-222-H, Section 15.5

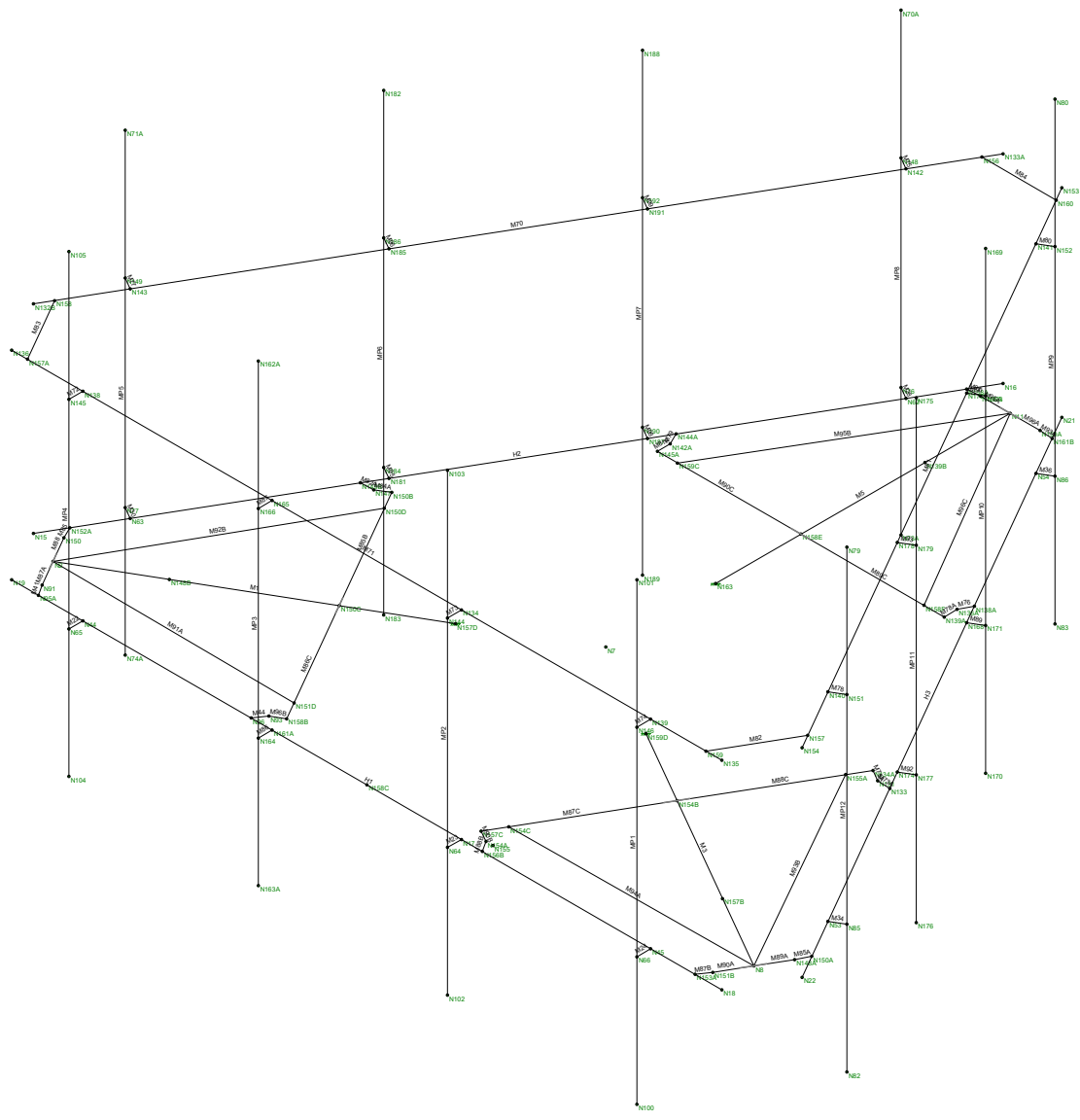
#### 4.1) Recommendations

The mount has sufficient capacity to carry the proposed loading configuration. In order for the results of the analysis to be considered valid, the proposed mount listed below must be installed.

1. Site Pro 1 RMQP-496 with Site Pro 1 HRK12 installed 42" above the horizontal.

No structural modifications are required at this time, provided that the above-listed changes are implemented.

**APPENDIX A**  
**WIRE FRAME AND RENDERED MODELS**



Trylon  
JE

842864

Wireframe  
Oct 7, 2021 at 5:03 PM  
RMQP-496\_loaded.r3d

**APPENDIX B**  
**SOFTWARE INPUT CALCULATIONS**

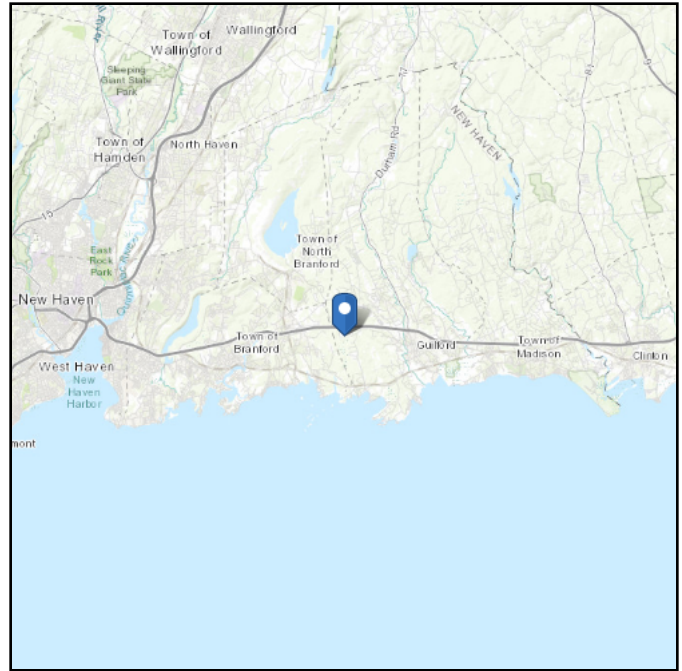


# ASCE 7 Hazards Report

**Address:**  
No Address at This  
Location

**Standard:** ASCE/SEI 7-10  
**Risk Category:** II  
**Soil Class:** D - Stiff Soil

**Elevation:** 105.75 ft (NAVD 88)  
**Latitude:** 41.291983  
**Longitude:** -72.732856

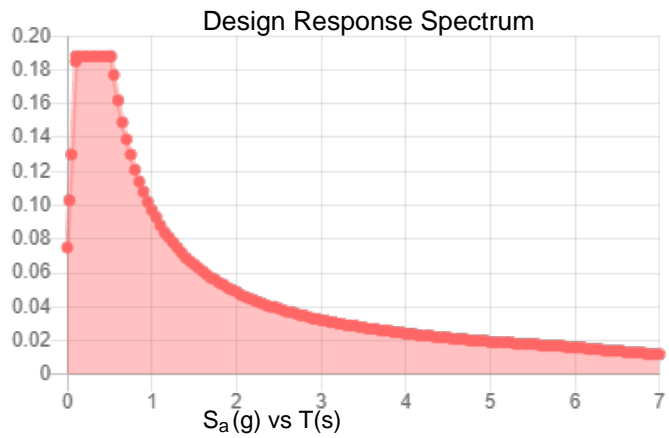
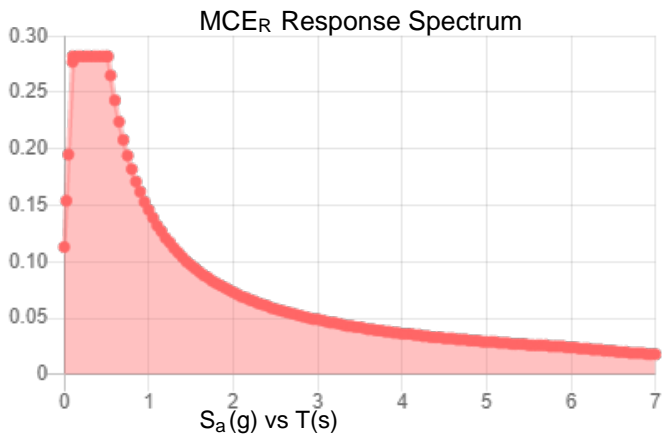


**Site Soil Class:** D - Stiff Soil

**Results:**

$S_s$ :	0.176	$S_{DS}$ :	0.188
$S_1$ :	0.061	$S_{D1}$ :	0.097
$F_a$ :	1.6	$T_L$ :	6
$F_v$ :	2.4	PGA :	0.09
$S_{MS}$ :	0.282	$PGA_M$ :	0.145
$S_{M1}$ :	0.146	$F_{PGA}$ :	1.6
		$I_e$ :	1

**Seismic Design Category** B



**Data Accessed:**

Wed Jul 28 2021

**Date Source:**

USGS Seismic Design Maps based on ASCE/SEI 7-10, incorporating Supplement 1 and errata of March 31, 2013, and ASCE/SEI 7-10 Table 1.5-2. Additional data for site-specific ground motion procedures in accordance with ASCE/SEI 7-10 Ch. 21 are available from USGS.

## Ice

---

**Results:**

Ice Thickness: 0.75 in.  
Concurrent Temperature: 15 F  
Gust Speed: 50 mph

**Data Source:** Standard ASCE/SEI 7-10, Figs. 10-2 through 10-8

**Date Accessed:** Wed Jul 28 2021

Ice thicknesses on structures in exposed locations at elevations higher than the surrounding terrain and in valleys and gorges may exceed the mapped values.

Values provided are equivalent radial ice thicknesses due to freezing rain with concurrent 3-second gust speeds, for a 50-year mean recurrence interval, and temperatures concurrent with ice thicknesses due to freezing rain. Thicknesses for ice accretions caused by other sources shall be obtained from local meteorological studies. Ice thicknesses in exposed locations at elevations higher than the surrounding terrain and in valleys and gorges may exceed the mapped values.

---

The ASCE 7 Hazard Tool is provided for your convenience, for informational purposes only, and is provided “as is” and without warranties of any kind. The location data included herein has been obtained from information developed, produced, and maintained by third party providers; or has been extrapolated from maps incorporated in the ASCE 7 standard. While ASCE has made every effort to use data obtained from reliable sources or methodologies, ASCE does not make any representations or warranties as to the accuracy, completeness, reliability, currency, or quality of any data provided herein. Any third-party links provided by this Tool should not be construed as an endorsement, affiliation, relationship, or sponsorship of such third-party content by or from ASCE.

ASCE does not intend, nor should anyone interpret, the results provided by this Tool to replace the sound judgment of a competent professional, having knowledge and experience in the appropriate field(s) of practice, nor to substitute for the standard of care required of such professionals in interpreting and applying the contents of this Tool or the ASCE 7 standard.

In using this Tool, you expressly assume all risks associated with your use. Under no circumstances shall ASCE or its officers, directors, employees, members, affiliates, or agents be liable to you or any other person for any direct, indirect, special, incidental, or consequential damages arising from or related to your use of, or reliance on, the Tool or any information obtained therein. To the fullest extent permitted by law, you agree to release and hold harmless ASCE from any and all liability of any nature arising out of or resulting from any use of data provided by the ASCE 7 Hazard Tool.



# Trylon

1825 W. Walnut Hill Lane Suite 120  
Irving, TX 75038

## TIA LOAD CALCULATOR 2.0

PROJECT DATA		
Job Code:	193334	
Carrier Site ID:	842864	
Carrier Site Name:	GUILFORD SW	

CODES AND STANDARDS		
Building Code:	2015 IBC	
Local Building Code:	2018 CSBC	
Design Standard:	TIA-222-H	

STRUCTURE DETAILS		
Mount Type:	Platform	--
Mount Elevation:	87.0	ft.
Number of Sectors:	4	--
Structure Type:	Monopole	--
Structure Height:	109.0	ft.

ANALYSIS CRITERIA		
Structure Risk Category:	II	--
Exposure Category:	B	--
Site Class:	D - Stiff Soil	--
Ground Elevation:	105.75	ft.

TOPOGRAPHIC DATA		
Topographic Category:	1.00	--
Topographic Feature:	N/A	--
Crest Point Elevation:	0.00	ft.
Base Point Elevation:	0.00	ft.
Crest to Mid-Height (L/2):	0.00	ft.
Distance from Crest (x):	0.00	ft.
Base Topo Factor ( $K_{zt}$ ):	1.00	--
Mount Topo Factor ( $K_{zt}$ ):	1.00	--

WIND PARAMETERS		
Design Wind Speed:	130	mph
Wind Escalation Factor ( $K_s$ ):	1.00	--
Velocity Coefficient ( $K_z$ ):	0.95	--
Directionality Factor ( $K_d$ ):	0.95	--
Gust Effect Factor (G <sub>h</sub> ):	1.00	--
Shielding Factor ( $K_a$ ):	0.90	--
Velocity Pressure ( $q_z$ ):	38.88	psf

ICE PARAMETERS		
Design Ice Wind Speed:	50	mph
Design Ice Thickness ( $t_i$ ):	1.50	in
Importance Factor ( $I_i$ ):	1.00	--
Ice Velocity Pressure ( $q_{iz}$ ):	38.88	psf
Mount Ice Thickness ( $t_{iz}$ ):	1.65	in

WIND STRUCTURE CALCULATIONS		
Flat Member Pressure:	69.99	psf
Round Member Pressure:	41.99	psf
Ice Wind Pressure:	7.21	psf

SEISMIC PARAMETERS		
Importance Factor ( $I_e$ ):	1.00	--
Short Period Accel. ( $S_s$ ):	0.176	g
1 Second Accel. ( $S_1$ ):	0.061	g
Short Period Des. ( $S_{DS}$ ):	0.19	g
1 Second Des. ( $S_{D1}$ ):	0.10	g
Short Period Coeff. ( $F_a$ ):	1.60	--
1 Second Coeff. ( $F_v$ ):	2.40	--
Response Coefficient ( $C_s$ ):	0.09	--
Amplification Factor ( $A_S$ ):	1.20	--

## LOAD COMBINATIONS [LRFD]

#	Description
1	1.4DL
2	1.2DL + 1WL 0 AZI
3	1.2DL + 1WL 30 AZI
4	1.2DL + 1WL 45 AZI
5	1.2DL + 1WL 60 AZI
6	1.2DL + 1WL 90 AZI
7	1.2DL + 1WL 120 AZI
8	1.2DL + 1WL 135 AZI
9	1.2DL + 1WL 150 AZI
10	1.2DL + 1WL 180 AZI
11	1.2DL + 1WL 210 AZI
12	1.2DL + 1WL 225 AZI
13	1.2DL + 1WL 240 AZI
14	1.2DL + 1WL 270 AZI
15	1.2DL + 1WL 300 AZI
16	1.2DL + 1WL 315 AZI
17	1.2DL + 1WL 330 AZI
18	0.9DL + 1WL 0 AZI
19	0.9DL + 1WL 30 AZI
20	0.9DL + 1WL 45 AZI
21	0.9DL + 1WL 60 AZI
22	0.9DL + 1WL 90 AZI
23	0.9DL + 1WL 120 AZI
24	0.9DL + 1WL 135 AZI
25	0.9DL + 1WL 150 AZI
26	0.9DL + 1WL 180 AZI
27	0.9DL + 1WL 210 AZI
28	0.9DL + 1WL 225 AZI
29	0.9DL + 1WL 240 AZI
30	0.9DL + 1WL 270 AZI
31	0.9DL + 1WL 300 AZI
32	0.9DL + 1WL 315 AZI
33	0.9DL + 1WL 330 AZI
34	1.2DL + 1DLi + 1WLi 0 AZI
35	1.2DL + 1DLi + 1WLi 30 AZI
36	1.2DL + 1DLi + 1WLi 45 AZI
37	1.2DL + 1DLi + 1WLi 60 AZI
38	1.2DL + 1DLi + 1WLi 90 AZI
39	1.2DL + 1DLi + 1WLi 120 AZI
40	1.2DL + 1DLi + 1WLi 135 AZI
41	1.2DL + 1DLi + 1WLi 150 AZI

#	Description
42	1.2DL + 1DLi + 1WLi 180 AZI
43	1.2DL + 1DLi + 1WLi 210 AZI
44	1.2DL + 1DLi + 1WLi 225 AZI
45	1.2DL + 1DLi + 1WLi 240 AZI
46	1.2DL + 1DLi + 1WLi 270 AZI
47	1.2DL + 1DLi + 1WLi 300 AZI
48	1.2DL + 1DLi + 1WLi 315 AZI
49	1.2DL + 1DLi + 1WLi 330 AZI
50	(1.2+0.2Sds) + 1.0E 0 AZI
51	(1.2+0.2Sds) + 1.0E 30 AZI
52	(1.2+0.2Sds) + 1.0E 45 AZI
53	(1.2+0.2Sds) + 1.0E 60 AZI
54	(1.2+0.2Sds) + 1.0E 90 AZI
55	(1.2+0.2Sds) + 1.0E 120 AZI
56	(1.2+0.2Sds) + 1.0E 135 AZI
57	(1.2+0.2Sds) + 1.0E 150 AZI
58	(1.2+0.2Sds) + 1.0E 180 AZI
59	(1.2+0.2Sds) + 1.0E 210 AZI
60	(1.2+0.2Sds) + 1.0E 225 AZI
61	(1.2+0.2Sds) + 1.0E 240 AZI
62	(1.2+0.2Sds) + 1.0E 270 AZI
63	(1.2+0.2Sds) + 1.0E 300 AZI
64	(1.2+0.2Sds) + 1.0E 315 AZI
65	(1.2+0.2Sds) + 1.0E 330 AZI
66	(0.9-0.2Sds) + 1.0E 0 AZI
67	(0.9-0.2Sds) + 1.0E 30 AZI
68	(0.9-0.2Sds) + 1.0E 45 AZI
69	(0.9-0.2Sds) + 1.0E 60 AZI
70	(0.9-0.2Sds) + 1.0E 90 AZI
71	(0.9-0.2Sds) + 1.0E 120 AZI
72	(0.9-0.2Sds) + 1.0E 135 AZI
73	(0.9-0.2Sds) + 1.0E 150 AZI
74	(0.9-0.2Sds) + 1.0E 180 AZI
75	(0.9-0.2Sds) + 1.0E 210 AZI
76	(0.9-0.2Sds) + 1.0E 225 AZI
77	(0.9-0.2Sds) + 1.0E 240 AZI
78	(0.9-0.2Sds) + 1.0E 270 AZI
79	(0.9-0.2Sds) + 1.0E 300 AZI
80	(0.9-0.2Sds) + 1.0E 315 AZI
81	(0.9-0.2Sds) + 1.0E 330 AZI
82-88	1.2D + 1.5 Lv1

#	Description
89	1.2D + 1.5Lm + 1.0Wm 0 AZI - MP1
90	1.2D + 1.5Lm + 1.0Wm 30 AZI - MP1
91	1.2D + 1.5Lm + 1.0Wm 45 AZI - MP1
92	1.2D + 1.5Lm + 1.0Wm 60 AZI - MP1
93	1.2D + 1.5Lm + 1.0Wm 90 AZI - MP1
94	1.2D + 1.5Lm + 1.0Wm 120 AZI - MP1
95	1.2D + 1.5Lm + 1.0Wm 135 AZI - MP1
96	1.2D + 1.5Lm + 1.0Wm 150 AZI - MP1
97	1.2D + 1.5Lm + 1.0Wm 180 AZI - MP1
98	1.2D + 1.5Lm + 1.0Wm 210 AZI - MP1
99	1.2D + 1.5Lm + 1.0Wm 225 AZI - MP1
100	1.2D + 1.5Lm + 1.0Wm 240 AZI - MP1
101	1.2D + 1.5Lm + 1.0Wm 270 AZI - MP1
102	1.2D + 1.5Lm + 1.0Wm 300 AZI - MP1
103	1.2D + 1.5Lm + 1.0Wm 315 AZI - MP1
104	1.2D + 1.5Lm + 1.0Wm 330 AZI - MP1
105	1.2D + 1.5Lm + 1.0Wm 0 AZI - MP2
106	1.2D + 1.5Lm + 1.0Wm 30 AZI - MP2
107	1.2D + 1.5Lm + 1.0Wm 45 AZI - MP2
108	1.2D + 1.5Lm + 1.0Wm 60 AZI - MP2
109	1.2D + 1.5Lm + 1.0Wm 90 AZI - MP2
110	1.2D + 1.5Lm + 1.0Wm 120 AZI - MP2
111	1.2D + 1.5Lm + 1.0Wm 135 AZI - MP2
112	1.2D + 1.5Lm + 1.0Wm 150 AZI - MP2
113	1.2D + 1.5Lm + 1.0Wm 180 AZI - MP2
114	1.2D + 1.5Lm + 1.0Wm 210 AZI - MP2
115	1.2D + 1.5Lm + 1.0Wm 225 AZI - MP2
116	1.2D + 1.5Lm + 1.0Wm 240 AZI - MP2
117	1.2D + 1.5Lm + 1.0Wm 270 AZI - MP2
118	1.2D + 1.5Lm + 1.0Wm 300 AZI - MP2
119	1.2D + 1.5Lm + 1.0Wm 315 AZI - MP2
120	1.2D + 1.5Lm + 1.0Wm 330 AZI - MP2

#	Description
121	1.2D + 1.5Lm + 1.0Wm 0 AZI - MP3
122	1.2D + 1.5Lm + 1.0Wm 30 AZI - MP3
123	1.2D + 1.5Lm + 1.0Wm 45 AZI - MP3
124	1.2D + 1.5Lm + 1.0Wm 60 AZI - MP3
125	1.2D + 1.5Lm + 1.0Wm 90 AZI - MP3
126	1.2D + 1.5Lm + 1.0Wm 120 AZI - MP3
127	1.2D + 1.5Lm + 1.0Wm 135 AZI - MP3
128	1.2D + 1.5Lm + 1.0Wm 150 AZI - MP3
129	1.2D + 1.5Lm + 1.0Wm 180 AZI - MP3
130	1.2D + 1.5Lm + 1.0Wm 210 AZI - MP3
131	1.2D + 1.5Lm + 1.0Wm 225 AZI - MP3
132	1.2D + 1.5Lm + 1.0Wm 240 AZI - MP3
133	1.2D + 1.5Lm + 1.0Wm 270 AZI - MP3
134	1.2D + 1.5Lm + 1.0Wm 300 AZI - MP3
135	1.2D + 1.5Lm + 1.0Wm 315 AZI - MP3
136	1.2D + 1.5Lm + 1.0Wm 330 AZI - MP3
137	1.2D + 1.5Lm + 1.0Wm 0 AZI - MP4
138	1.2D + 1.5Lm + 1.0Wm 30 AZI - MP4
139	1.2D + 1.5Lm + 1.0Wm 45 AZI - MP4
140	1.2D + 1.5Lm + 1.0Wm 60 AZI - MP4
141	1.2D + 1.5Lm + 1.0Wm 90 AZI - MP4
142	1.2D + 1.5Lm + 1.0Wm 120 AZI - MP4
143	1.2D + 1.5Lm + 1.0Wm 135 AZI - MP4
144	1.2D + 1.5Lm + 1.0Wm 150 AZI - MP4
145	1.2D + 1.5Lm + 1.0Wm 180 AZI - MP4
146	1.2D + 1.5Lm + 1.0Wm 210 AZI - MP4
147	1.2D + 1.5Lm + 1.0Wm 225 AZI - MP4
148	1.2D + 1.5Lm + 1.0Wm 240 AZI - MP4
149	1.2D + 1.5Lm + 1.0Wm 270 AZI - MP4
150	1.2D + 1.5Lm + 1.0Wm 300 AZI - MP4
151	1.2D + 1.5Lm + 1.0Wm 315 AZI - MP4
152	1.2D + 1.5Lm + 1.0Wm 330 AZI - MP4

\*This page shows an example of maintenance loads for (4) pipes, the number of mount pipe LCs may vary per site











**APPENDIX C**  
**SOFTWARE ANALYSIS OUTPUT**



























**APPENDIX D**  
**ADDITIONAL CALCUATIONS**

**BOLT TOOL 1.5.2**

Project Data	
Job Code:	193334
Carrier Site ID:	842864
Carrier Site Name:	GUILFORD SW

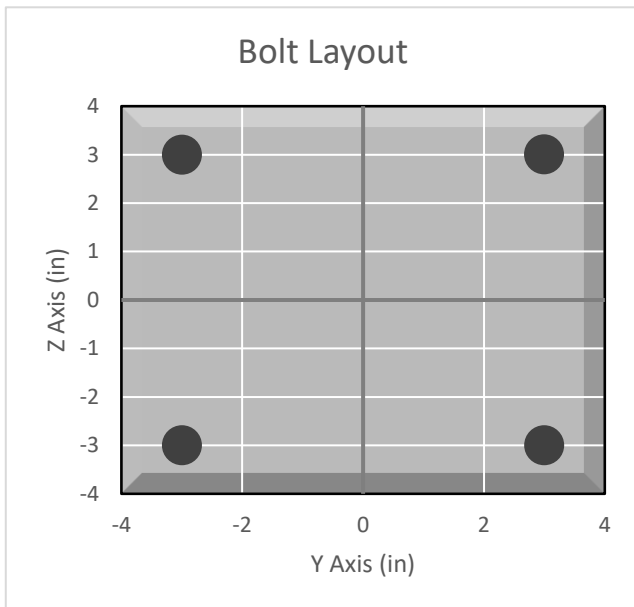
Code	
Design Standard:	TIA-222-H
Slip Check:	No
Pretension Standard:	TIA-222-H

Bolt Properties		
Connection Type:	Bolt	
Diameter:	0.625	in
Grade:	A325	--
Yield Strength (Fy):	92	ksi
Ultimate Strength (Fu):	120	ksi
Number of Bolts:	4	--
Threads Included:	Yes	--
Double Shear:	No	--
Connection Pipe Size:	-	in

Connection Description
Standoff to Collar

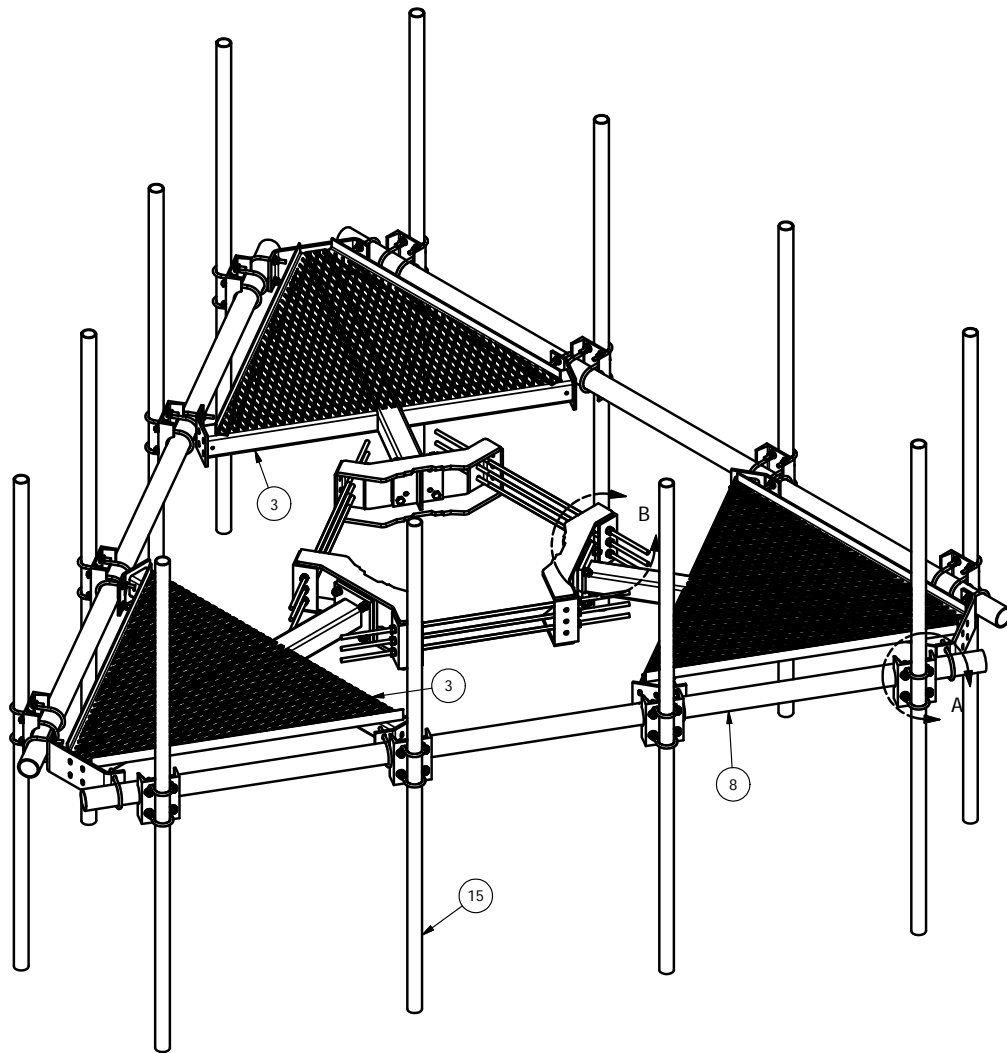
Bolt Check*		
Tensile Capacity ( $\phi T_n$ ):	20340.1	lbs
Shear Capacity ( $\phi V_n$ ):	13805.8	lbs
Tension Force ( $T_u$ ):	5439.8	lbs
Shear Force ( $V_u$ ):	391.2	lbs
Tension Usage:	25.5%	--
Shear Usage:	2.7%	--
Interaction:	25.5%	Pass
Controlling Member:	M5	--
Controlling LC:	39	--

\*Rating per TIA-222-H Section 15.5

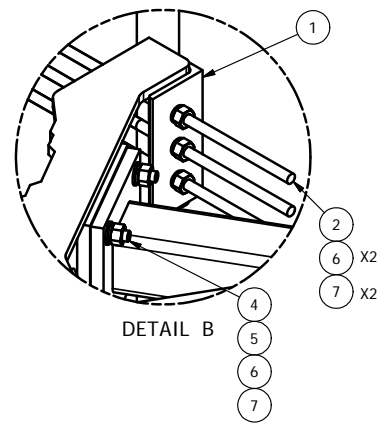
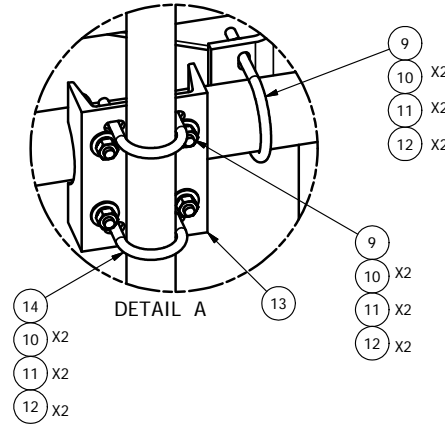




**APPENDIX E**  
**SUPPLEMENTAL DRAWINGS**



PARTS LIST						
ITEM	QTY	PART NO.	PART DESCRIPTION	LENGTH	UNIT WT.	NET WT.
1	3	X-LWRM	RING MOUNT WELDMENT		68.81	206.42
2	9	G58R-48	5/8" x 48" THREADED ROD (HDG.)		0.40	3.59
2	9	G58R-24	5/8" x 24" THREADED ROD (HDG.)		0.40	3.59
3	3	X-SV196	LOW PROFILE PLATFORM CORNER		212.10	636.31
4	12	A58234	5/8" x 2-3/4" HDG A325 HEX BOLT	2.75	0.36	4.27
5	12	A58FW	5/8" HDG A325 FLATWASHER		0.03	0.41
6	30	G58LW	5/8" HDG LOCKWASHER		0.03	0.78
7	30	A58NUT	5/8" HDG A325 HEX NUT		0.13	3.90
8	3	P3150	3-1/2" X 150" SCH 40 GALVANIZED PIPE	150.000 in	94.80	284.40
9	36	X-UB1306	1/2" X 3-5/8" X 6" X 3" U-BOLT (HDG.)		0.26	9.25
10	120	G12FW	1/2" HDG USS FLATWASHER		0.03	4.09
11	120	G12LW	1/2" HDG LOCKWASHER		0.01	1.67
12	120	G12NUT	1/2" HDG HEAVY 2H HEX NUT		0.07	8.60
13	12	X-SP219	SMALL SUPPORT CROSS PLATE	8.250 in	8.61	103.33
14	24	X-UB1212	1/2" X 2-1/2" X 4-1/2" X 2" U-BOLT (HDG.)		0.26	6.17
15	12	B	ANTENNA MOUNTING PIPE	C	D	E



2-3/8" O.D. VERTICAL MOUNTING PIPES					
ASSEMBLY NO. "A"	PART NO. "B"	LENGTH, "C"	UNIT WEIGHT, "D"	NET WEIGHT, "E"	TOTAL WEIGHT
RMQP-463	P263	63"	20.18	242.16	1591.11
RMQP-472	P272	72"	23.07	276.84	1625.79
RMQP-484	P284	84"	26.91	322.92	1671.87
RMQP-496	P296	96"	30.76	369.12	1718.07
RMQP-4126	P2126	126"	40.75	489.00	1837.95

REV	DESCRIPTION OF REVISIONS	CPD	BY	DATE
A	ADDED 10' 6" ANTENNA MOUNTING PIPES	CEK		7/9/2015
REVISION HISTORY				

**TOLERANCE NOTE**  
**TOLERANCES ON DIMENSIONS, UNLESS OTHERWISE NOTED ARE: SAWED, SHEARED AND GAS CUT EDGES (± 0.030")**  
**DRILLED AND GAS CUT HOLES (± 0.030") - NO CONING OF HOLES**  
**LASER CUT EDGES AND HOLES (± 0.010") - NO CONING OF HOLES**  
**BENDS ARE ± 1/2 DEGREE - ALL OTHER MACHINING (± 0.030")**  
**ALL OTHER ASSEMBLY (± 0.060")**

**PROPRIETARY NOTE**  
 THE DATA AND TECHNIQUES CONTAINED IN THIS DRAWING ARE PROPRIETARY INFORMATION OF VALMONT INDUSTRIES AND CONSIDERED A TRADE SECRET. ANY USE OR DISCLOSURE WITHOUT THE CONSENT OF VALMONT INDUSTRIES IS STRICTLY PROHIBITED.

**DESCRIPTION**  
 LOW PROFILE CO-LOCATION PLATFORM  
 FOR 12 ANTENNAS WITH 12' 6" FACE WIDTH  
 FOR 12" - 38" DIAMETER POLES

**DRAWN BY**  
 CEK 1/20/2012

**CPD NO.**  
 semb

**DRAWING USAGE**  
 CUSTOMER

**ENG. APPROVAL**  
 BMC

**CHECKED BY**  
 7/9/2015

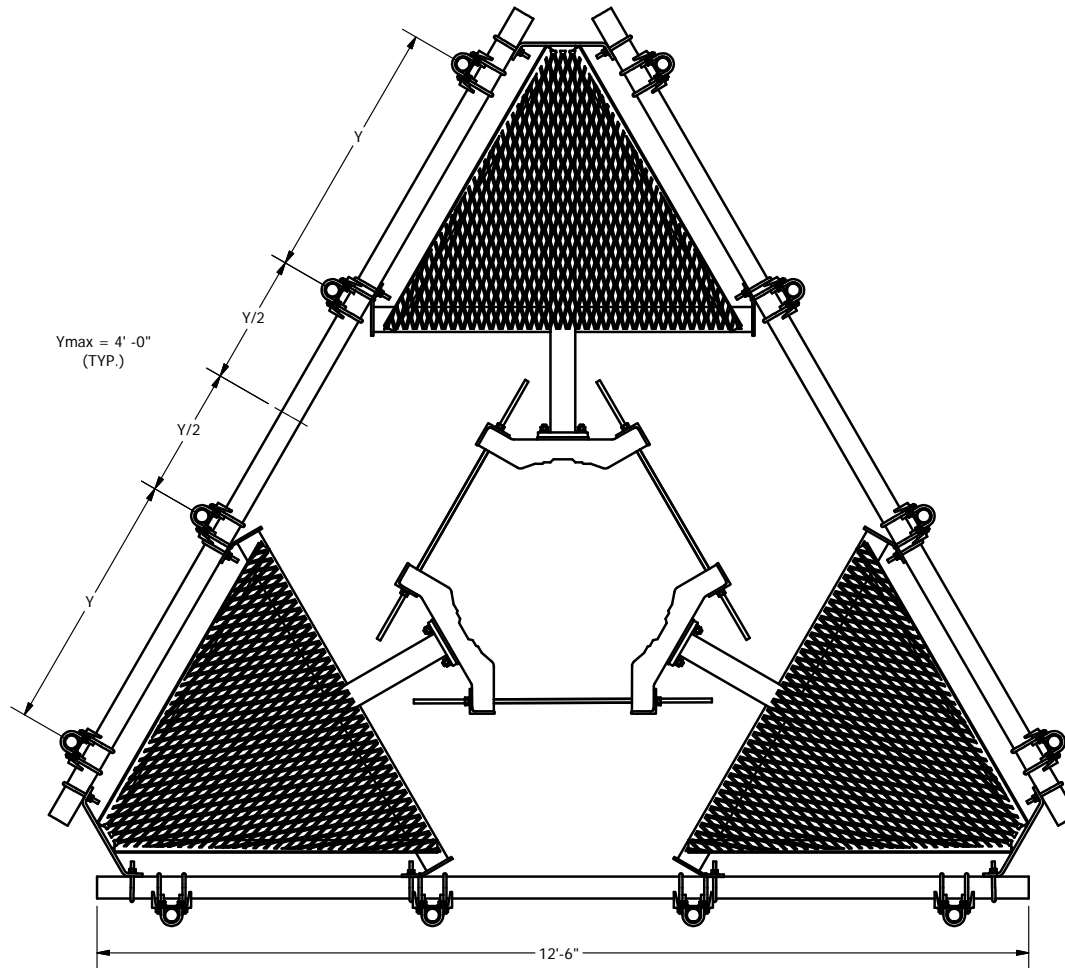
**SITE PRO 1**  
 Engineering Support Team:  
 1-888-753-7446

**Locations:**  
 New York, NY  
 Atlanta, GA  
 Los Angeles, CA  
 Plymouth, IN  
 Salem, OR  
 Dallas, TX

**PART NO.**  
 SEE ASSEMBLY NO. "A"

**DWG. NO.**  
 RMQP-4XX

**PAGE 2**



**TOLERANCE NOTE**

**TOLERANCES ON DIMENSIONS, UNLESS OTHERWISE NOTED ARE:  
 SAWED, SHEARED AND GAS CUT EDGES ( $\pm 0.030$ " )  
 DRILLED AND GAS CUT HOLES ( $\pm 0.030$ " ) - NO CONING OF HOLES  
 LASER CUT EDGES AND HOLES ( $\pm 0.010$ " ) - NO CONING OF HOLES  
 BENDS ARE  $\pm 1/2$  DEGREE - ALL OTHER MACHINING ( $\pm 0.030$ " )  
 ALL OTHER ASSEMBLY ( $\pm 0.060$ " )**

**PROPRIETARY NOTE**

**THE DATA AND TECHNIQUES CONTAINED IN THIS DRAWING ARE PROPRIETARY INFORMATION OF VALMONT INDUSTRIES AND CONSIDERED A TRADE SECRET. ANY USE OR DISCLOSURE WITHOUT THE CONSENT OF VALMONT INDUSTRIES IS STRICTLY PROHIBITED.**

**DESCRIPTION**

**LOW PROFILE CO-LOCATION PLATFORM  
 FOR 12 ANTENNAS WITH 12' 6" FACE WIDTH  
 FOR 12" - 38" DIAMETER POLES**



Engineering  
 Support Team:  
 1-888-753-7446

Locations:  
 New York, NY  
 Atlanta, GA  
 Los Angeles, CA  
 Plymouth, IN  
 Salem, OR  
 Dallas, TX

A valmont COMPANY

**DRAWN BY**

**CEK 1/20/2012**

**CPD NO.**

**semb**

**DRAWING USAGE**

**CUSTOMER**

**ENG. APPROVAL**

**CHECKED BY**

**BMC**

**7/9/2015**

**PART NO.**

**SEE ASSEMBLY NO. "A"**

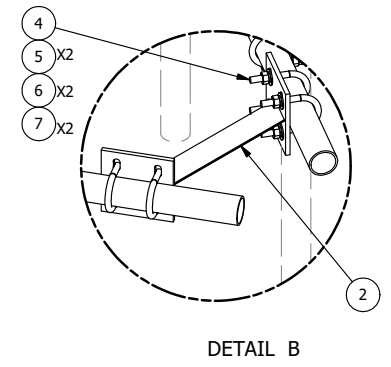
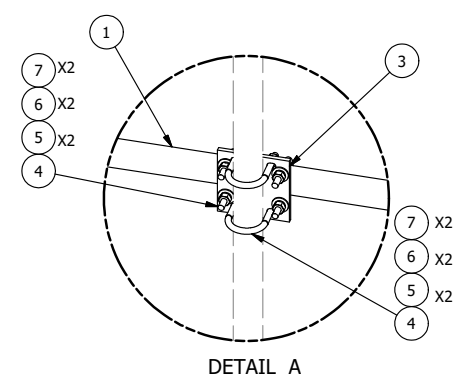
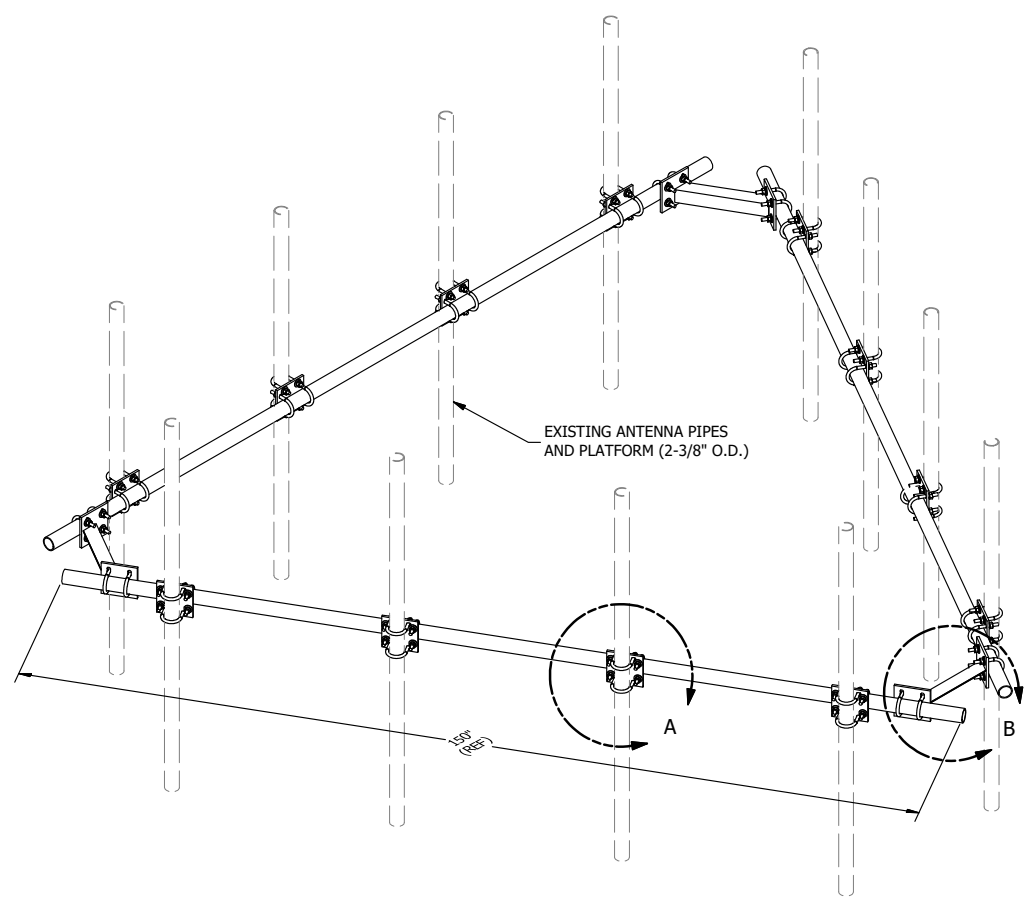
**DWG. NO.**

**RMQP-4XX**

REV	DESCRIPTION OF REVISIONS	CPD	BY	DATE
A	ADDED 10' 6" ANTENNA MOUNTING PIPES		CEK	7/9/2015

**REVISION HISTORY**

PARTS LIST						
ITEM	QTY	PART NO.	PART DESCRIPTION	LENGTH	UNIT WT.	NET WT.
1	3	P2150	2-3/8" O.D. X 150" SCH 40 GALVANIZED PIPE	150 in	45.77	137.31
2	3	X-AHCP	ANGLE HANDRAIL CORNER PLATE		12.92	38.76
3	12	SCX1	CROSSOVER PLATE 2-3/8" X 2-3/8"	6 in	3.71	44.50
4	60	X-UB1212	1/2" X 2-1/2" X 4-1/2" X 2" U-BOLT (HDG.)		0.63	37.51
5	120	G12FW	1/2" HDG USS FLATWASHER	3/32 in	0.03	4.09
6	120	G12LW	1/2" HDG LOCKWASHER	1/8 in	0.01	1.67
7	120	G12NUT	1/2" HDG HEAVY 2H HEX NUT		0.07	8.60
TOTAL WT. #						272.43



REV	DESCRIPTION OF REVISIONS	CPD	BY	DATE
A	REPLACED HCP WITH X-AHCP	CEK		7/10/2014
REVISION HISTORY				

**TOLERANCE NOTES**

**TOLERANCES ON DIMENSIONS, UNLESS OTHERWISE NOTED ARE:  
 SAWED, SHEARED AND GAS CUT EDGES ( $\pm 0.030"$ )  
 DRILLED AND GAS CUT HOLES ( $\pm 0.030"$ ) - NO CONING OF HOLES  
 LASER CUT EDGES AND HOLES ( $\pm 0.010"$ ) - NO CONING OF HOLES  
 BENDS ARE  $\pm 1/2$  DEGREE  
 ALL OTHER MACHINING ( $\pm 0.030"$ )  
 ALL OTHER ASSEMBLY ( $\pm 0.060"$ )**

PROPRIETARY NOTE:  
 THE DATA AND TECHNIQUES CONTAINED IN THIS DRAWING ARE PROPRIETARY INFORMATION OF VALMONT INDUSTRIES AND CONSIDERED A TRADE SECRET. ANY USE OR DISCLOSURE WITHOUT THE CONSENT OF VALMONT INDUSTRIES IS STRICTLY PROHIBITED.

DESCRIPTION			
<b>HANDRAIL KIT FOR 12'-6" FACE</b>			
CPD NO.	DRAWN BY	ENG. APPROVAL	
	KC8 5/30/2012		
CLASS	SUB	DRAWING USAGE	CHECKED BY
81	01	CUSTOMER	BMC 7/13/2014

<b>SITE PRO 1</b> A valmont COMPANY	Locations: New York, NY Atlanta, GA Los Angeles, CA Plymouth, IN Salem, OR Dallas, TX
	Engineering Support Team: 1-888-753-7446
PART NO.	<b>HRK12</b>
DWG. NO.	<b>HRK12</b>