

EM-VER-055-050110

280 Trumbull Street
Hartford, CT 06103-3597
Main (860) 275-8200
Fax (860) 275-8299
kbaldwin@rc.com
Direct (860) 275-8345

January 10, 2005

Via Hand Delivery

S. Derek Phelps
Executive Director
Connecticut Siting Council
10 Franklin Square
New Britain, CT 06051

Re: **Notice of Exempt Modification**
113 Brush Hill Road
Goshen, Connecticut



Dear Mr. Phelps:

Cellco Partnership d/b/a Verizon Wireless ("Cellco") intends to install antennas on the existing 195-foot monopole tower, 113 Brush Hill Road in Goshen, Connecticut. The tower is owned and operated by the Bay Communications and was approved in Council Docket No. 260. Sprint is currently located at the 195-foot level of the tower. Please accept this letter as notification pursuant to R.C.S.A. § 16-50j-73, for construction that constitutes an exempt modification pursuant to R.C.S.A. § 16-50j-72(b)(2). In accordance with R.C.S.A. § 16-50j-73, a copy of this letter is being sent to the Goshen First Selectman, James P. O'Leary.

The facility consists of a 195-foot self-supporting monopole tower capable of supporting multiple carriers within a fenced site compound. Cellco proposes to install twelve (12) panel-type antennas at the 185-foot level on the tower and a 12' x 30' single-story equipment shelter near the base of the tower within the fenced site compound. Please note that in order to accommodate the proposed equipment shelter the existing fenced compound must be expanded by approximately 15-feet along the westerly side of the compound. (See Tab 1- Project Plans). The existing lease area will not need to be expanded.

The planned modifications to the Goshen facility fall squarely within those activities explicitly provided for in R.C.S.A. § 16-50j-72(b)(2).



Law Offices

BOSTON

HARTFORD

NEW LONDON

STAMFORD

GREENWICH

NEW YORK

SARASOTA

www.rc.com

HART1-1227709-1

ROBINSON & COLE LLP

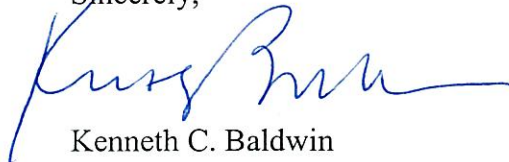
S. Derek Phelps
January 10, 2005
Page 2

1. The proposed modification will not increase the overall height of the existing tower. Cellco's antennas will be mounted with their centerline at the 185-foot level on the 195-foot tower.
2. The proposed installation of twelve (12) panel-type antennas and a 12' x 30' equipment shelter will require a minor extension of the fenced site compound. As stated previously the existing lease area will not need to be expanded.
3. The proposed antenna modification will not increase the noise levels at the facility by six decibels or more.
4. The operation of the antennas will not increase radio frequency (RF) power density levels at the facility to a level at or above the Federal Communications Commission (FCC) adopted safety standard. The cumulative worst-case RF power density calculations for the existing and proposed Cellco antennas would be 0.63% of the FCC standard. A copy of the cumulative power density calculations table is attached behind Tab2.

Also attached, behind Tab 3, is an engineer's certification stating that the tower can support the existing and proposed antennas and associated equipment.

For the foregoing reasons, Cellco respectfully submits that the proposed antenna installation at the Goshen facility tower constitutes an exempt modification under R.C.S.A. § 16-50j-72(b)(2).

Sincerely,



Kenneth C. Baldwin

Attachments

cc: James P. O'Leary, First Selectman
Sandy M. Carter



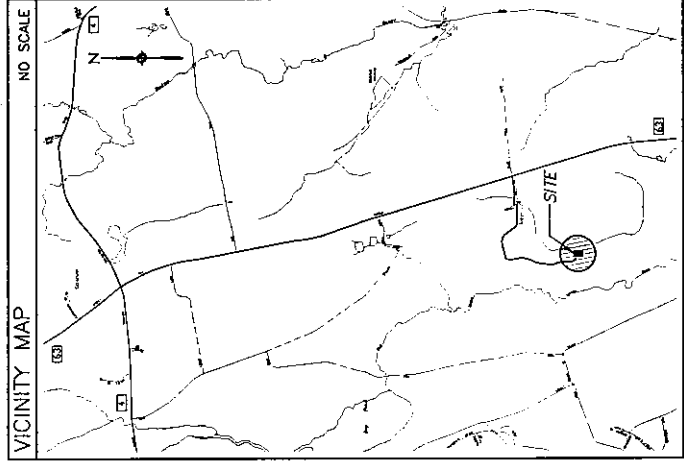
CELLCO PARTNERSHIP

DBA

verizon wireless

GOSHEN SOUTH

113 BRUSH HILL ROAD
GOSHEN, CONNECTICUT



PROJECT SUMMARY

SITE NAME: GOSHEN SOUTH
SITE ADDRESS: 113 BRUSH HILL ROAD
GOSHEN, CONNECTICUT
CONTACT PERSON: CELLCO PARTNERSHIP DBA
VERIZON WIRELESS
(800) 833-8319
GOVERNING CODE: CONNECTICUTE STATE BUILDING
AND LIFE SAFETY CODE
APPLICANT: CELLCO PARTNERSHIP DBA
VERIZON WIRELESS
19 EAST ROCK DRIVE
EAST HARTFORD, CT 06108
ARCHITECT: IHS CORPORATION A.E.S.
795 BROOK STREET, BLDG 5
ROCKY HILL, CT 06067

LEGEND

SYMBOL DESCRIPTION
SECTION OR DETAIL NUMBER
SHEET WHERE DETAIL/SECTION OCCURS
ELEVATION NUMBER
SHEET WHERE ELEVATION OCCURS

ABBREVIATIONS

ALL: ALLIANCE
V.U.T.: VERY IN FIELD
O.C.: ON CENTER
P.S.F.: POUNDS/SQUARE FOOT
TYP.: TYPICAL
CONC.: CONCRETE
TYP.: TYPE OF WALL

SHEET INDEX

SHEET NO. DESCRIPTION
T-1 TITLE SHEET - GENERAL NOTES AND LEGEND
SR-1 SITE PLAN AND TOWER ELEVATION

CELLCO PARTNERSHIP
DBA
verizon wireless

A/E FIRM
IHS CORPORATION A.E.S.
795 BROOK STREET, BLDG 5
ROCKY HILL, CONNECTICUT
1-800-329-8882

A/E SEAL

PROJECT NO.: 38928423

JOB NO.: VZ1-108

DRAWN BY: CRS

CHECKED BY:

ISSUED FOR

11-25-06 PROJECT REVIEW

01-25-07 FINAL DRAWING

THE INFORMATION CONTAINED
IN THIS SET OF DOCUMENTS
IS PROPRIETARY BY NATURE
AND USE OR DISCLOSURE
HEREOF WITHOUT THE WRITTEN
CONSENT OF VERIZON WIRELESS
IS STRICTLY PROHIBITED.

GOSHEN SOUTH
113 BRUSH HILL ROAD
GOSHEN, CONNECTICUT

SCALE: AS NOTED

TITLE SHEET-
GENERAL NOTES
AND LEGEND

T-1

CELCO PARTNERSHIP
DBA
Verizon wireless

AS PER
BNS CORPORATION LLC
795 BROOK STREET, BLDG 5
ROCKY HILL, CONNECTICUT
1-800-528-4442

AS PER
AS PER

PROJECT NO. 38P28423
JOB NO. 121-100
DRAWN BY: CWS
CHECKED BY:

ISSUED FOR:
11-01-04 BING DUCKER, INC.
01-05-06 BING DUCKER, INC.

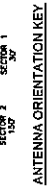
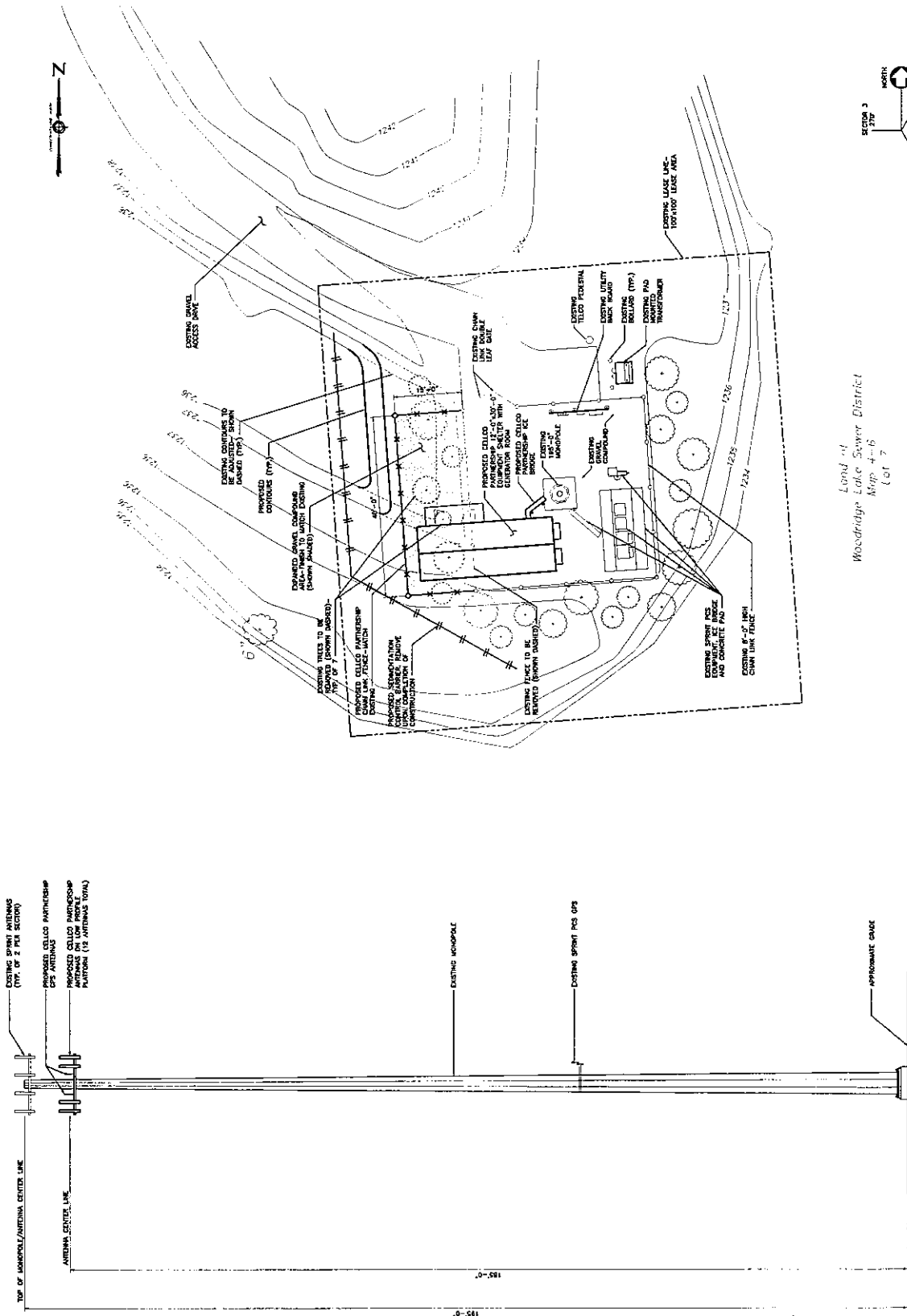
THE INFORMATION CONTAINED
HEREIN IS FOR THE USE OF THE
OWNER AND IS NOT TO BE
REPRODUCED OR TRANSMITTED
IN ANY FORM OR BY ANY
MEANS, ELECTRONIC OR
MECHANICAL, INCLUDING
PHOTOCOPYING, RECORDING,
OR BY ANY INFORMATION
SYSTEMS WITHOUT THE
WRITTEN PERMISSION OF
THE OWNER. ANY
OTHER USE OR DISCLOSURE
IS STRICTLY PROHIBITED.

GOSHEN SOUTH
113 BRUSH HILL ROAD
GOSHEN, CONNECTICUT

SCALE: AS NOTED

**SITE PLAN AND
TOWER ELEVATION**

SC-1



Latitude: 41°-47'-50" (NAD 83)
Longitude: 73°-13'-18" (NAD 83)



1 SITE PLAN
SCALE: 1"=10'-0"



2 TOWER ELEVATION
SCALE: 1"=10'-0"

General Power Density

Site Name: Goshen S
Tower Height: 185 FT

Operator	Operating Frequency (MHz)	Number of Trans.	ERP Per Trans. (watts)	Total ERP (watts)	Distance to Target (feet)	Calculated Power Density (mW/cm ²)	Maximum Permissible Exposure (mW/cm ²)	Fraction of MPE (%)
Verizon	1900	3	200	600	185	0.0063	1	0.63%
Total Percentage of Maximum Permissible Exposure								0.63%

*Guidelines adopted by the FCC on August 1, 1996, 47 CFR Part 1 based on NCRP Report 86, 1986 and generally on ANSI/IEEE C95.1-1992

MHz = Megahertz
mW/cm² = milliwatts per square centimeter
ERP = Effective Radiated Power





January 7, 2005

Ms. Pamela Katz, Chairman
Connecticut Siting Council
10 Franklin Square
New Britain, CT 06051

**Reference: Existing Telecommunications Facility Modification
Verizon Wireless
113 Brush Hill Road
Goshen, Connecticut
VZ1 108/36929428.00000**

Dear Ms. Katz:

URS Corporation (URS) conducted a structural review of the existing 195' monopole at 113 Brush Hill Road, Goshen, Connecticut. The purpose of our review was to evaluate the effect of the proposed Verizon Wireless antenna addition on the existing monopole structure. The monopole structure design documents were prepared by Engineered Endeavors Inc., job number 12782 Rev. II approved July 28, 2004. The tower was designed to support six (6) telecommunication carriers between elevation 195' and 145'. The design considered twelve (12) DAPA 48000 antennas on a 12' low profile platform for each carrier. The tower currently supports Sprint PCS antennas mounted on a low profile platform at the 195' elevation. The proposed Verizon Wireless addition considered in this review is as follows:

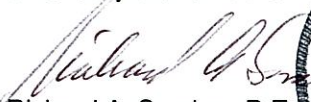
Antenna and Mount Modification	Carrier	Antenna Center Elevation
(12) Decibel DB950F85E-M antennas on low profile platform with (12) 1-5/8" coaxial cables inside the monopole.	Verizon Wireless	185' A.G.L.

The results of this review indicate the structure to be in compliance with the loading conditions and the material and member sizes for the monopole structure and its foundation. The monopole is considered feasible with the applicable TIA/EIA-222-F wind load classification specified and proposed Verizon Wireless and existing antenna loading. The structure and its foundation are in compliance with the BOCA 1996 and Connecticut State Building Code supplement 1999 including the latest amendments.

If you should have any questions, please call.

Sincerely,

URS Corporation AES


Richard A. Sambor, P.E.
Manager Facilities Design



RAS

cc: Mark Gauger - Verizon Wireless
Rachel A. Mayo - Robinson & Cole LLP
Douglas Roberts, AIA - URS
CF/Book

URS Corporation
500 Enterprise Drive, Suite 3B
Rocky Hill, CT 06067
Tel: 860.529.8882
Fax: 860.529.3991