



June 10, 2014

David Martin and
Members of the Siting Council
Connecticut Siting Council
Ten Franklin Square
New Britain, CT 06051

RE: Notice of Exempt Modification
113 Brush Hill Road
Goshen, CT 06756
Sprint Site #: NV2.5_CT33XC108
N 41° 47' 49.81"
W -73° 13' 17.87"

Dear Mr. Martin and Members of the Siting Council:

On behalf of Sprint Spectrum, SBA Communications is submitting an exempt modification application to the Connecticut Siting Council for modification of existing equipment at a tower facility located at 113 Brush Hill Road, Goshen CT.

The 113 Brush Hill Road facility consists of a 195' MONOPOLE Tower owned and operated by SBA Towers V, LLC. In order to accommodate technological changes and enhance system performance in the State of Connecticut, Sprint Spectrum plans to modify the equipment configurations at many of its existing cell sites. Please accept this letter and attachments as notification, pursuant to R.C.S.A. Section 16-50j-73, of construction which constitutes an exempt modification pursuant to R.C.S.A. Section 16-50j-72(b)(2). In compliance with R.C.S.A. Section 16-50j-73, a copy of this letter and attachments is being sent to the chief elected official of the municipality in which the affected cell site is located.

As part of Sprint's Network Vision modification project, Sprint desires to upgrade their equipment to meet the new standards of 4G technology. The new equipment will allow customers to download files and browse the internet at a high rate of speed while also allowing their phones to be compatible with the latest 4G technology.

Attached is a summary of the planned modifications, including power density calculations reflecting the change in Sprint's operations at the site along with the required fee of \$625.

The changes to the facility do not constitute modifications as defined in Connecticut General Statutes ("C.G.S.") Section 16-50i(d) because the general physical characteristics of the facility will not be



significantly changed or altered. Rather, the planned changes to the facility fall squarely within those activities explicitly provided for in R.C.S.A. Section 16-50j-72(b)(2).

1. The overall height of the structure will be unaffected.
2. The proposed changes will not extend the site boundaries. There will be no effect on the site compound other than the new equipment cabinets.
3. The proposed changes will not increase the noise level at the existing facility by six decibels or more.
4. The changes in radio frequency power density will not increase the calculated "worst case" power density for the combined operations at the site to a level at or above the applicable standard for uncontrolled environments as calculated for a mixed frequency site.

For the foregoing reasons, SBA Communications on behalf of Sprint Spectrum, respectfully submits that the proposed changes at the referenced site constitute exempt modifications under R.C.S.A. Section 16-50j-72(b)(2).

Please feel free to call me at (508) 251-0720 x 3804 with any questions you may have concerning this matter.

Thank you,

A handwritten signature in black ink, appearing to read "Kri Pelletier".

Kri Pelletier
SBA Communications Corporation
33 Boston Post Road West Suite 320
Marlborough, MA 01752
508-251-0720 x 3804 + T
508-251-1755 + F
203-446-7700 + C
kpelletier@sbsite.com



**Sprint Spectrum
Equipment Modification**

113 Brush Hill Road, Goshen CT 06756
Site number CT33XC108

Tower Owner: SBA Towers V, LLC

Equipment Configuration: MONOPOLE Tower

Current and/or approved:

- (3) RFS APXVSP18-C-A20 w/Mount Pipe
- (3) ALU 1900 MHz RRUs
- (3) ALU 800 MHz RRUs
- (3) ALU 800 MHz Filters
- (4) RFS ACU-A20-N RETs
- (3) 1-1/4" Feeds

Planned Modifications:

- (3) RFS APXVSP18-C-A20 w/Mount Pipe
- (3) ALU 1900 MHz RRUs
- (3) ALU 800 MHz RRUs
- (3) ALU 800 MHz Filters
- (4) RFS ACU-A20-N RETs
- (3) RFS APXVTM14-C-I20 w/ Mount Pipe
- (3) ALU TD-RRH8x20-25 RRUs
- (4) 1-1/4" Feeds

Structural Information:

The attached structural analysis demonstrates that the tower and foundation will have adequate structural capacity to accommodate the proposed modifications.

Power Density:

The anticipated Maximum Composite contributions from the Sprint facility are 6.841% of the allowable FCC established general public limit. The anticipated composite MPE value for this site assuming all carriers present is 25.451% of the allowable FCC established general public limit sampled at the ground level.

Site Composite MPE %	
Carrier	MPE %
Sprint	6.841%
AT&T	10.800%
Verizon Wireless	7.810%
Total Site MPE %	25.451%



June 10, 2014

Robert P. Valentine
First Selectman
Town of Goshen
Town Hall
42A North Street
Goshen, CT 06756

RE: Telecommunications Facility @ 113 Brush Hill Road, Goshen CT

Dear Mr. Valentine,

In order to accommodate technological changes and enhance system performance in the State of Connecticut, Sprint Spectrum will be changing its equipment configuration at certain cell sites.

As required by Regulations of Connecticut State Agencies (R.C.S.A.) Section 16-50j-73, the Connecticut Siting Council has been notified of the changes and will review Sprint's proposal. Please accept this letter as notification under Section 16-50j-73 of construction which constitutes an exempt modification pursuant to R.C.S.A. Section 16-50j-72(b)(2).

The accompanying letter to the Siting Council fully describes Sprint's proposal for the referenced cell site. However, if you have any questions or require any further information on our plans or the Siting Council's procedures, please call me at (508) 251-0720 x 3804.

Thank you,

A handwritten signature in black ink, appearing to read "Kri Pelletier", is positioned above the typed name.

Kri Pelletier
SBA Communications Company
33 Boston Post Road West, Suite 320
Marlborough, MA 01752
508-251-0720 x 3804 + T
508-251-1755 + F
203-446-7700 + C
kpelletier@sbsite.com



June 10, 2014

Woodridge Lake Sewer District
PO Box 258
113 Brush Hill Road
Goshen CT 06756

RE: Telecommunications Facility @ 113 Brush Hill Road, Goshen CT

To Whom It May Concern,

In order to accommodate technological changes and enhance system performance in the State of Connecticut, Sprint Spectrum will be changing its equipment configuration at certain cell sites.

As required by Regulations of Connecticut State Agencies (R.C.S.A.) Section 16-50j-73, the Connecticut Siting Council has been notified of the changes and will review Sprint's proposal. Please accept this letter as notification under Section 16-50j-73 of construction which constitutes an exempt modification pursuant to R.C.S.A. Section 16-50j-72(b)(2).

The accompanying letter to the Siting Council fully describes Sprint's proposal for the referenced cell site. However, if you have any questions or require any further information on our plans or the Siting Council's procedures, please call me at (508) 251-0720 x 3804.

Thank you,

A handwritten signature in black ink, appearing to read "Kri Pelletier", is positioned above the typed name.

Kri Pelletier
SBA Communications Company
33 Boston Post Road West, Suite 320
Marlborough, MA 01752
508-251-0720 x 3804 + T
508-251-1755 + F
203-446-7700 + C
kpelletier@sbsite.com

RADIO FREQUENCY FCC REGULATORY COMPLIANCE
MAXIMUM PERMISSIBLE EXPOSURE (MPE) ASSESSMENT

Sprint Existing Facility

Site ID: CT33XC108

Woodbridge Lake Sewer Dist.

113 Brush Hill Road
Goshen, CT 06756

May 21, 2014

EBI Project Number: 62143087

May 21, 2014

Sprint
Attn: RF Engineering Manager
1 International Boulevard, Suite 800
Mahwah, NJ 07495

Re: Radio Frequency Maximum Permissible Exposure (MPE) Assessment for Site:
CT33XC108 - Woodbridge Lake Sewer Dist.

Site Total: 25.451% - MPE % in full compliance

EBI Consulting was directed to analyze the proposed upgrades to the existing Sprint facility located at 113 Brush Hill Road, Goshen, CT, for the purpose of determining whether the radio frequency (RF) exposure levels from the proposed Sprint equipment upgrades on this property are within specified federal limits.

All information used in this report was analyzed as a percentage of current Maximum Permissible Exposure (% MPE) as listed in the FCC OET Bulletin 65 Edition 97-01 and ANSI/IEEE Std C95.1. The FCC regulates Maximum Permissible Exposure in units of microwatts per square centimeter ($\mu\text{W}/\text{cm}^2$). The number of $\mu\text{W}/\text{cm}^2$ calculated at each sample point is called the power density. The exposure limit for power density varies depending upon the frequencies being utilized. Wireless Carriers and Paging Services use different frequency bands each with different exposure limits, therefore it is necessary to report results and limits in terms of percent MPE rather than power density.

All results were compared to the FCC (Federal Communications Commission) radio frequency exposure rules, 47 CFR 1.1307(b)(1) – (b)(3), to determine compliance with the Maximum Permissible Exposure (MPE) limits for General Population/Uncontrolled environments as defined below.

General population/uncontrolled exposure limits apply to situations in which the general public may be exposed or in which persons who are exposed as a consequence of their employment may not be made fully aware of the potential for exposure or cannot exercise control over their exposure. Therefore, members of the general public would always be considered under this category when exposure is not employment related, for example, in the case of a telecommunications tower that exposes persons in a nearby residential area.

Public exposure to radio frequencies is regulated and enforced in units of microwatts per square centimeter ($\mu\text{W}/\text{cm}^2$). The general population exposure limit for the cellular band (850 MHz Band) is approximately $567 \mu\text{W}/\text{cm}^2$, and the general population exposure limit for the 1900 MHz and 2500 MHz bands is $1000 \mu\text{W}/\text{cm}^2$. Because each carrier will be using different frequency bands, and each frequency band has different exposure limits, it is necessary to report percent of MPE rather than power density.

Occupational/controlled exposure limits apply to situations in which persons are exposed as a consequence of their employment and in which those persons who are exposed have been made fully aware of the potential for exposure and can exercise control over their exposure. Occupational/controlled exposure limits also apply where exposure is of a transient nature as a result of incidental passage through a location where exposure levels may be above general population/uncontrolled limits (see below), as long as the exposed person has been made fully aware of the potential for exposure and can exercise control over his or her exposure by leaving the area or by some other appropriate means.

Additional details can be found in FCC OET 65.

CALCULATIONS

Calculations were done for the proposed upgrades to the existing Sprint Wireless antenna facility located at 113 Brush Hill Road, Goshen, CT, using the equipment information listed below. All calculations were performed per the specifications under FCC OET 65. All calculations were performed assuming the main lobe of the antenna was focused at the base of the tower to present a worst case scenario. Actual values seen from this site will be dramatically less than those shown in this report. For this report the sample point is the top of a 6 foot person standing at the base of the tower.

For all calculations, all emissions were calculated using the following assumptions:

- 1) 2 channels in the 1900 MHz Band were considered for each sector of the proposed installation.
- 2) 1 channel in the 800 MHz Band was considered for each sector of the proposed installation
- 3) 2 channels in the 2500 MHz Band were considered for each sector of the proposed installation.
- 4) All radios at the proposed installation were considered to be running at full power and were uncombined in their RF transmissions paths per carrier prescribed configuration. Per FCC OET Bulletin No. 65 - Edition 97-01 recommendations to achieve the maximum anticipated value at each sample point, all power levels emitting from the proposed antenna installation are increased by a factor of 2.56 to account for possible in-phase reflections from the surrounding environment. This is rarely the case, and if so, is never continuous.
- 5) For the following calculations the sample point was the top of a six foot person standing at the base of the tower. The maximum gain of the antenna per the antenna manufactures supplied specifications was used in this direction.

- 6) The antennas used in this modeling are the RFS APXVSPP18-C-A20 and the RFS APXVTMM-C-120. This is based on feedback from the carrier with regards to anticipated antenna selection. The RFS APXVSPP18-C-A20 has a 15.9 dBd gain value at its main lobe at 1900 MHz and 13.4 dBd at its main lobe for 850 MHz. The RFS APXVTMM-C-120 has a 15.9 dBd gain value at its main lobe at 2500 MHz. All calculations were performed assuming the main lobe of the antenna was focused at the base of the tower to present a worst case scenario.
- 7) The antenna mounting height centerline for the proposed antennas is **195 feet** above ground level (AGL).
- 8) Emissions values for additional carriers were taken from the Connecticut Siting Council active database. Values in this database are provided by the individual carriers themselves.

All calculation were done with respect to uncontrolled / general public threshold limits

Site ID	CT33XC108 - Woodbridge Lake Sewer Dist.
Site Address	113 Brush Hill Road, Goshen, CT 06756
Site Type	Monopole

Sector 1

Antenna Number	Antenna Make	Antenna Model	Radio Type	Frequency Band	Technology	Power Out Per Channel (Watts)	Number of Channels	Composite Power	Antenna Gain in direction of sample point (dBd)	Antenna Height (ft)	analysis height	Cable Size	Cable Loss (dB)	Additional Loss (dB)	ERP	Power Density Percentage
1a	RFS	APXVSP18-C-A20	RRH	1900 MHz	CDMA / LTE	20	2	40	15.9	195	189	1/2 "	0.5	3	695.12033	0.69959%
1a	RFS	APXVSP18-C-A20	RRH	850 MHz	CDMA / LTE	20	1	20	13.4	195	189	1/2 "	0.5	3	195.44744	0.34692%
1B	RFS	APXVTMM14-C-120	RRH	2500 MHz	CDMA / LTE	20	2	40	15.9	195	189	1/2 "	0.5	3	695.12033	1.23384%
Sector total Power Density Value: 2.280%																

Sector 2

Antenna Number	Antenna Make	Antenna Model	Radio Type	Frequency Band	Technology	Power Out Per Channel (Watts)	Number of Channels	Composite Power	Antenna Gain in direction of sample point (dBd)	Antenna Height (ft)	analysis height	Cable Size	Cable Loss (dB)	Additional Loss (dB)	ERP	Power Density Percentage
2a	RFS	APXVSP18-C-A20	RRH	1900 MHz	CDMA / LTE	20	2	40	15.9	195	189	1/2 "	0.5	3	695.12033	0.69959%
2a	RFS	APXVSP18-C-A20	RRH	850 MHz	CDMA / LTE	20	1	20	13.4	195	189	1/2 "	0.5	3	195.44744	0.34692%
2B	RFS	APXVTMM14-C-120	RRH	2500 MHz	CDMA / LTE	20	2	40	15.9	195	189	1/2 "	0.5	3	695.12033	1.23384%
Sector total Power Density Value: 2.280%																

Sector 3

Antenna Number	Antenna Make	Antenna Model	Radio Type	Frequency Band	Technology	Power Out Per Channel (Watts)	Number of Channels	Composite Power	Antenna Gain in direction of sample point (dBd)	Antenna Height (ft)	analysis height	Cable Size	Cable Loss (dB)	Additional Loss (dB)	ERP	Power Density Percentage
3a	RFS	APXVSP18-C-A20	RRH	1900 MHz	CDMA / LTE	20	2	40	15.9	195	189	1/2 "	0.5	3	695.12033	0.69959%
3a	RFS	APXVSP18-C-A20	RRH	850 MHz	CDMA / LTE	20	1	20	13.4	195	189	1/2 "	0.5	3	195.44744	0.34692%
3B	RFS	APXVTMM14-C-120	RRH	2500 MHz	CDMA / LTE	20	2	40	15.9	195	189	1/2 "	0.5	3	695.12033	1.23384%
Sector total Power Density Value: 2.280%																

Site Composite MPE %	
Carrier	MPE %
Sprint	6.841%
AT&T	10.800%
Verizon Wireless	7.810%
Total Site MPE %	25.451%

Summary

All calculations performed for this analysis yielded results that were well within the allowable limits for general public Maximum Permissible Exposure (MPE) to radio frequency energy.

The anticipated Maximum Composite contributions from the Sprint facility are **6.841% (2.280% from each sector)** of the allowable FCC established general public limit considering all three sectors simultaneously sampled at the ground level.

The anticipated composite MPE value for this site assuming all carriers present is **25.451%** of the allowable FCC established general public limit sampled at 6 feet above ground level. This total composite site value is based upon MPE values listed in the Connecticut Siting Council database for existing carrier emissions.

FCC guidelines state that if a site is found to be out of compliance (over allowable thresholds), that carriers over a 5% contribution to the composite value will require measures to bring the site into compliance. For this facility, the composite values calculated were well within the allowable 100% threshold standard per the federal government.



Scott Heffernan
RF Engineering Director

EBI Consulting
21 B Street
Burlington, MA 01803



**Structural Analysis for
SBA Network Services, Inc.**

195' Monopole Tower

**SBA Site Name: Goshen 3, CT
SBA Site ID: CT12210-A-01
Sprint Site ID: CT33XC108**

FDH Project Number 14633M1400

Analysis Results

Tower Components	87.1%	Sufficient
Foundation	83.7%	Sufficient

Prepared By:

Patrick Roach, EI
Project Engineer

Reviewed By:

Dennis D. Abel
Director of Tower Engineering
CT PE License No. 23247

FDH Engineering, Inc.
6521 Meridien Drive
Raleigh, NC 27616
(919) 755-1012
info@fdh-inc.com



April 22, 2014

TABLE OF CONTENTS

EXECUTIVE SUMMARY3

 Conclusions.....3

 Recommendation.....3

APPURTENANCE LISTING4

RESULTS.....5

GENERAL COMMENTS6

LIMITATIONS.....6

APPENDIX7

EXECUTIVE SUMMARY

At the request of SBA Network Services, Inc., FDH Engineering, Inc. performed a structural analysis of the monopole located in Goshen, CT to determine whether the tower is structurally adequate to support both the existing and proposed loads pursuant to the *Structural Standards for Steel Antenna Towers and Antenna Supporting Structures, TIA/EIA-222-F and the 2005 Connecticut Building Code*. Information pertaining to the existing/proposed antenna loading, current tower geometry, geotechnical data, foundation dimensions, and member sizes was obtained from:

- Engineered Endeavors Incorporated (Drawing No. GS55363) original tower design dated July 28, 2004
- Engineered Endeavors Incorporated (Project No. 12782 Rev. II) Design Calculations for a Spread Footing Foundation dated July 28, 2004
- FDH, Inc. TIA Inspection Report dated December 1, 2009
- SBA Network Services, Inc.

The *basic design wind speed* per the *TIA/EIA-222-F* standards and the 2005 Connecticut Building Code is 80 mph without ice and 28 mph with 1 - 1/4" radial ice. Ice is considered to increase in thickness with height.

Conclusions

With the existing and proposed antennas from Sprint in place at 195 ft, the tower meets the requirements of the *TIA/EIA-222-F* standards and the *2005 Connecticut Building Code* provided the **Recommendations** listed below are satisfied. Furthermore, provided the foundation was designed and constructed to support the original design reactions (see Engineered Endeavors Incorporated Project No. 12782 Rev. II), the foundation should have the necessary capacity to support both the proposed and existing loading. For a more detailed description of the analysis of the tower, see the **Results** section of this report.

Our structural analysis has been performed assuming all information provided to FDH Engineering, Inc. is accurate (i.e., the steel data, tower layout, existing antenna loading, and proposed antenna loading) and that the tower has been properly erected and maintained per the original design drawings.

Recommendation

To ensure the requirements of the *TIA/EIA-222-F* standards and the *2005 Connecticut Building Code* are met with the existing and proposed loading in place, we have the following recommendation:

1. The proposed coax should be installed inside the pole's shaft.
2. RRU/RRH Stipulation: The equipment may be installed in any arrangement as determined by the client.

APPURTENANCE LISTING

The proposed and existing antennas with their corresponding cables/coax lines are shown in **Table 1**. *If the actual layout determined in the field deviates from the layout, FDH Engineering, Inc. should be contacted to perform a revised analysis.*

Table 1 - Appurtenance Loading

Existing Loading:

Antenna Elevation (ft)	Description	Feedlines ¹	Carrier	Mount Elevation (ft)	Mount Type
195	(3) RFS APXVSP18-C-A20 w/Mount Pipe (3) ALU 1900 MHz RRUs (3) ALU 800 MHz RRUs (3) ALU 800 MHz Filters (4) RFS ACU-A20-N RETs	(3) 1-1/4"	Sprint	195.25	(1) 13' LP Platform
186.25	(4) Antel LPA-80080/6CF w/ Mount Pipe (1) Andrew FPA5250 (1) GPS	(18) 1-5/8" (2) 1/2"	Verizon	185.25	(1) 12.5' LP Platform
185	(3) Antel BXA-70063-6CF-EDIN w/Mount Pipe (3) Antel BXA-171063-12BF w/ Mount Pipe (2) Antel LPA-80063-6CF w/ Mount Pipe				
172.5	(12) Powerwave 7770.00 w/Mount Pipe (12) Powerwave LGP13519 Diplexers (12) Powerwave LGP21401 TMAs	(12) 1-5/8"	AT&T	170	(1) 12.5' LP Platform

1. All coax are installed inside the tower shaft unless otherwise noted.

Proposed Loading:

Antenna Elevation (ft)	Description	Feedlines	Carrier	Mount Elevation (ft)	Mount Type
195	(3) RFS APXVSP18-C-A20 w/Mount Pipe (3) ALU 1900 MHz RRUs (3) ALU 800 MHz RRUs (3) ALU 800 MHz Filters (4) RFS ACU-A20-N RETs (3) RFS APXVTM14-C-I20 w/ Mount Pipe (3) ALU TD-RRH8x20-25 RRUs	(3) 1-1/4" (1) 1-1/4" Power/Fiber	Sprint	195.25	(1) 13' LP Platform

RESULTS

The following yield strength of steel for individual members was used for analysis:

Table 2 - Material Strength

Member Type	Yield Strength
Tower Shaft Sections	65 ksi
Base Plate	60 ksi
Anchor Bolts	75 ksi

Table 3 displays the summary of the ratio (as a percentage) of force in the member to their capacities. Values greater than 100% indicate locations where the maximum force in the member exceeds its capacity. *Note: Capacities up to 105% are considered acceptable.* **Table 4** displays the maximum foundation reactions.

If the assumptions outlined in this report differ from actual field conditions, FDH Engineering, Inc. should be contacted to perform a revised analysis. Furthermore, as no information pertaining to the allowable twist and sway requirements for the existing or proposed appurtenances was provided, deflection and rotation were not taken into consideration when performing this analysis.

See the **Appendix** for detailed modeling information

Table 3 - Summary of Working Percentage of Structural Components

Section No.	Elevation ft	Component Type	Size	% Capacity	Pass Fail
L1	193.5 - 142.71	Pole	TP32.21x22.5x0.25	72.8	Pass
L2	142.71 - 94.16	Pole	TP40.87x30.8344x0.375	76.4	Pass
L3	94.16 - 46.66	Pole	TP49.08x39.049x0.4375	77.6	Pass
L4	46.66 - 0	Pole	TP57x46.9466x0.5	74.1	Pass
		Anchor Bolts	(24) 2.25" Φ w/ BC 66"	60.4	Pass
		Base Plate	PL 72" Φ x 2.25" Thick	87.1	Pass

Table 4 - Maximum Base Reactions

Base Reactions	Current Analysis (TIA/EIA-222-F)	Original Design (TIA/EIA-222-F)
Axial	50 k	51 k
Shear	28 k	34 k
Moment	3,952 k-ft	4,719 k-ft

GENERAL COMMENTS

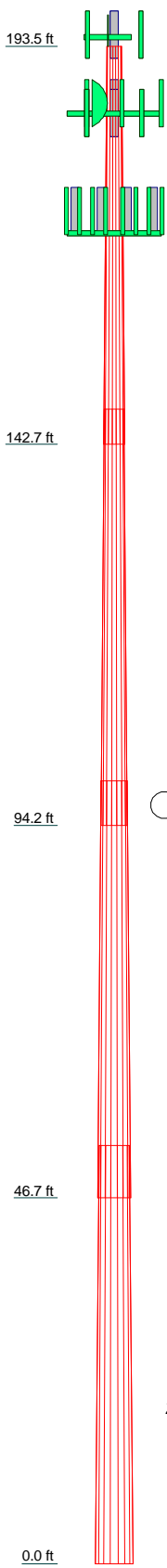
This engineering analysis is based upon the theoretical capacity of the structure. It is not a condition assessment of the tower and its foundation. It is the responsibility of SBA Network Services, Inc. to verify that the tower modeled and analyzed is the correct structure (with accurate antenna loading information) modeled. If there are substantial modifications to be made or the assumptions made in this analysis are not accurate, FDH Engineering, Inc. should be notified immediately to perform a revised analysis.

LIMITATIONS

All opinions and conclusions are considered accurate to a reasonable degree of engineering certainty based upon the evidence available at the time of this report. All opinions and conclusions are subject to revision based upon receipt of new or additional/updated information. All services are provided exercising a level of care and diligence equivalent to the standard and care of our profession. No other warranty or guarantee, expressed or implied, is offered. Our services are confidential in nature and we will not release this report to any other party without the client's consent. The use of this engineering work is limited to the express purpose for which it was commissioned and it may not be reused, copied, or distributed for any other purpose without the written consent of FDH Engineering, Inc.

APPENDIX

Section	1	2	3	4	
Length (ft)	50.79	53.13	53.17	53.33	
Number of Sides	18	18	18	18	
Thickness (in)	0.2500	0.3750	0.4375	0.5000	
Socket Length (ft)	4.58	5.67	6.67	46.9466	
Top Dia (in)	22.5000	30.8344	39.0490	57.0000	
Bot Dia (in)	32.2100	40.8700	49.0800		
Grade			A572-65		
Weight (K)	3.7	7.6	11.0	14.8	37.1



DESIGNED APPURTENANCE LOADING

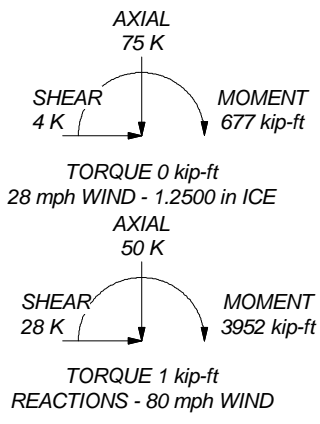
TYPE	ELEVATION	TYPE	ELEVATION
APXVSP18-C-A20 w/Mount Pipe	195.25	BXA-70063-6CF-EDIN w/Mount Pipe	185.25
APXVSP18-C-A20 w/Mount Pipe	195.25		
APXVSP18-C-A20 w/Mount Pipe	195.25	BXA-171063-12BF w/ Mount Pipe	185.25
1900 MHz RRH	195.25	BXA-171063-12BF w/ Mount Pipe	185.25
1900 MHz RRH	195.25	BXA-171063-12BF w/ Mount Pipe	185.25
1900 MHz RRH	195.25	LPA-80063-6CF w/ Mount Pipe	185.25
800 MHz RRH	195.25	LPA-80063-6CF w/ Mount Pipe	185.25
800 MHz RRH	195.25	12.5' LP Platform	185.25
800 MHz RRH	195.25	BXA-70063-6CF-EDIN w/Mount Pipe	185.25
800 MHz Filter	195.25		
800 MHz Filter	195.25	LPA-80080/6CF w/ Mount Pipe	185.25
800 MHz Filter	195.25	(2) LPA-80080/6CF w/ Mount Pipe	185.25
(2) ACU-A20-N RET	195.25	LPA-80080/6CF w/ Mount Pipe	185.25
ACU-A20-N RET	195.25	FPA5250	185.25
ACU-A20-N RET	195.25	GPS	185.25
13' LP Platform	195.25		
APXVTM14-C-I20 w/ Mount Pipe	195.25	(4) LGP21401 TMA	170
APXVTM14-C-I20 w/ Mount Pipe	195.25	(4) LGP21401 TMA	170
APXVTM14-C-I20 w/ Mount Pipe	195.25	(4) LGP21401 TMA	170
APXVTM14-C-I20 w/ Mount Pipe	195.25	12.5' LP Platform	170
TD-RRH8x20-25	195.25	(4) 7770.00 w/Mount Pipe	170
TD-RRH8x20-25	195.25	(4) 7770.00 w/Mount Pipe	170
TD-RRH8x20-25	195.25	(4) 7770.00 w/Mount Pipe	170
Lightning Rod	193.5	(4) LGP13519 Diplexer	170
BXA-70063-6CF-EDIN w/Mount Pipe	185.25	(4) LGP13519 Diplexer	170
		(4) LGP13519 Diplexer	170

MATERIAL STRENGTH

GRADE	Fy	Fu	GRADE	Fy	Fu
A572-65	65 ksi	80 ksi			

TOWER DESIGN NOTES

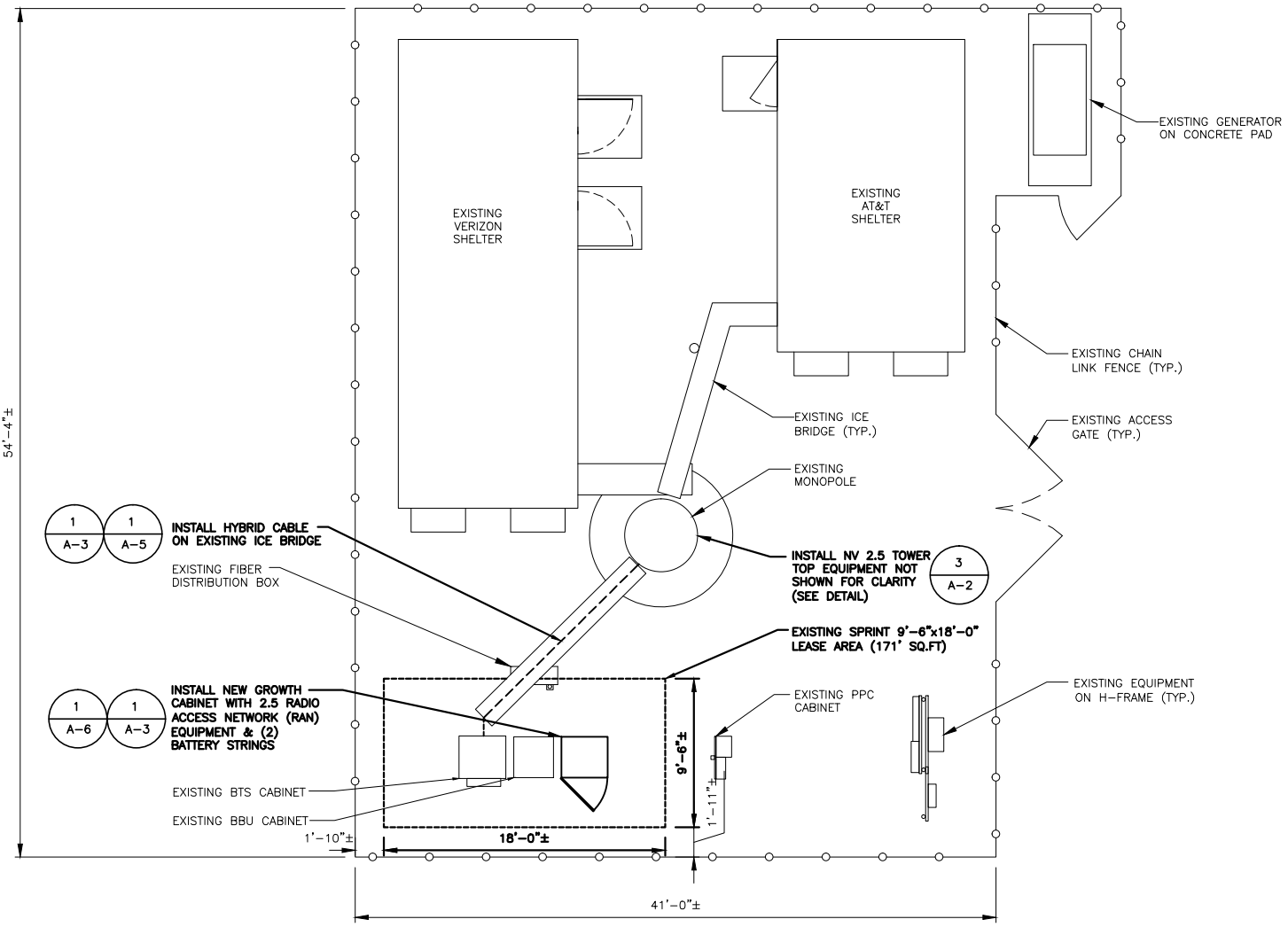
1. Tower is located in Litchfield County, Connecticut.
2. Tower designed for a 80 mph basic wind in accordance with the TIA/EIA-222-F Standard.
3. Tower is also designed for a 28 mph basic wind with 1.25 in ice. Ice is considered to increase in thickness with height.
4. Deflections are based upon a 50 mph wind.
5. TOWER RATING: 77.6%



FDH Engineering, Inc.
 6521 Meridien Drive, Suite 107
 Raleigh, North Carolina 27616
 Phone: 9197551012
 FAX: 9197551031

Job: **Goshen 3, CT12210-A-01**
 Project: **14633M1400**
 Client: SBA
 Code: TIA/EIA-222-F
 Path:
 Drawn by: PROach
 Date: 04/22/14
 App'd:
 Scale: NTS
 Dwg No. E-1

C:\Users\PROach\Desktop\CT12210-A_Goshen 3-CT14633M1400\Analysis\Wind\Goshen 3_C12210-A-01.dwg



SOURCE: SPRINT SITE AUDIT PHOTO 12-16-13

RAN EQUIPMENT PHOTO DETAIL
SCALE: N.T.S.



COMPOUND PLAN
SCALE: 3/16"=1'-0"

EXISTING BTS CABINET
EXISTING BBU CABINET
INSTALL NEW GROWTH CABINET WITH 2.5 RADIO ACCESS NETWORK (RAN) EQUIPMENT & (2) BATTERY STRINGS

1
A-6

1
A-3

Daniel P. Hamm
STATE OF CONNECTICUT
DANIEL P. HAMM
No. 24178
LICENSED PROFESSIONAL ENGINEER

CHECKED BY: KB

APPROVED BY: DPH

SUBMITTALS			
REV.	DATE	DESCRIPTION	BY
1	06/09/14	ISSUED FOR CONSTRUCTION	SF
0	05/19/14	ISSUED FOR CONSTRUCTION	SF

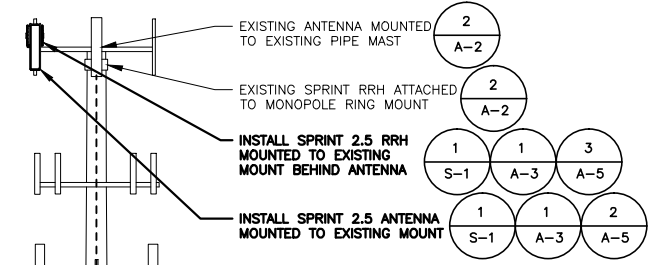
SITE NUMBER:
CT33XC108-F

SITE NAME:
WOODBIDGE LAKE
SEWER DISTRICT
SITE ADDRESS:
113 BRUSH HILL ROAD
GOSHEN, CT 06756

SHEET TITLE
COMPOUND PLAN

SHEET NUMBER
A-1

TOP OF EXISTING MONOPOLE
ELEV. 195'± (AGL)
SPRINT RAD CENTER
OF PROPOSED SPRINT ANTENNAS
ELEV. 195.0'± (AGL)
SBA RAD CENTER
OF PROPOSED SPRINT ANTENNAS
ELEV. 195.0'± (AGL)



EXISTING ANTENNAS BY OTHERS (TYP.)

SPECIAL CONSTRUCTION NOTE:
SPRINT TOWER TOP WORK IS CONTINGENT ON THE FOLLOWING:
* COMPLETION OF A GLOBAL STRUCTURAL STABILITY ANALYSIS (PROVIDED BY TOWER OWNER).
* COMPLETION OF AN ANTENNA/RRH MOUNT STRUCTURAL ASSESSMENT (PROVIDED BY A&E VENDOR).
* GC SHALL FURNISH, INSTALL AND COMPLETE ALL REQUIRED STRUCTURAL MODIFICATIONS AS INDICATED IN BEFORE-MENTIONED ANALYSIS AND ASSESSMENT.
* SBA COMMUNICATIONS CORPORATION SHALL PROVIDE WRITTEN ACCEPTANCE/APPROVAL FOR THE COMPLETION OF ALL TOWER/FOUNDATION STRUCTURAL MODIFICATIONS INCLUDING (AS NECESSARY) CONTROLLED CONSTRUCTION INSPECTIONS, SHOP-DRAWING APPROVALS, MATERIALS TEST RESULTS, AND FINAL ENGINEER'S AFFIDAVIT.

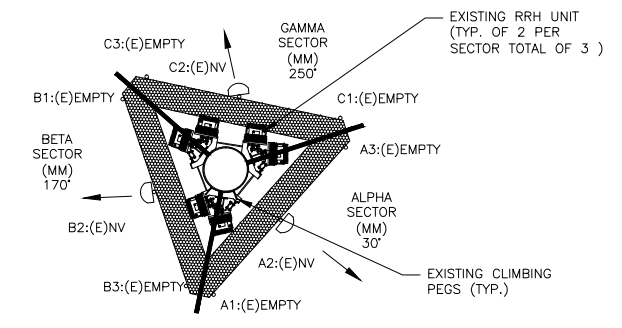
NOTE:
SPRINT RAD CENTER SHOWN IN RED TEXT BASED ON SBA-PROVIDED COLLOCATION APPLICATION, EQUIPMENT DATABASE, AND STRUCTURAL ANALYSIS. THE SBA-PROVIDED ANTENNA RAD CENTER SHALL SUPERSEDE ANY CONFLICTING INFORMATION DERIVED FROM THE SPRINT NV 2.5 RFDS.

NOTE:
EXISTING AZIMUTHS FROM SPRINT SITE AUDIT DATED 12/16/13

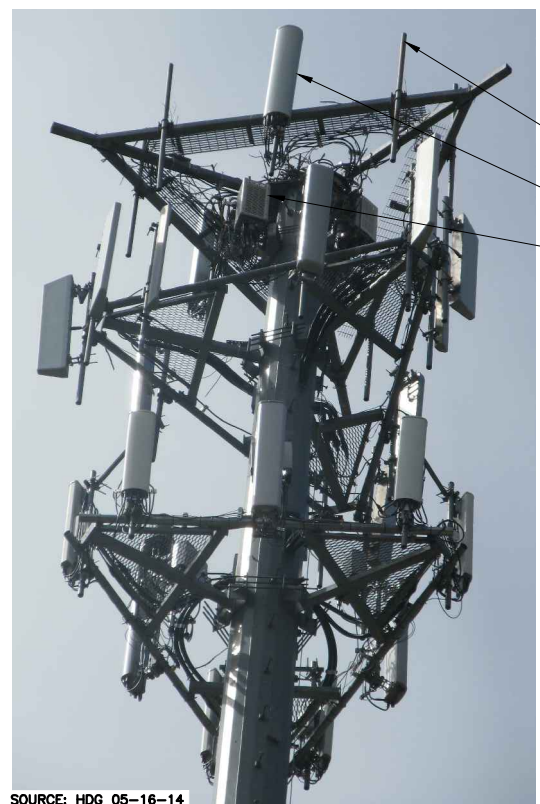
Sprint
1 INTERNATIONAL BLVD, SUITE 800
MAHWAH, NJ 07495
TEL: (800) 357-7641

SBA
SBA COMMUNICATIONS CORP.
33 BOSTON POST ROAD WEST, SUITE 320
MARLBOROUGH, MA 01752 TEL: (508) 251-0720

Hudson Design Group, Inc.
1600 OSGOOD STREET
BUILDING 20 NORTH, SUITE 3090
N. ANDOVER, MA 01845 TEL: (978) 557-5553 FAX: (978) 336-5586



EXISTING ANTENNA PLAN 2
SCALE: N.T.S. A-2

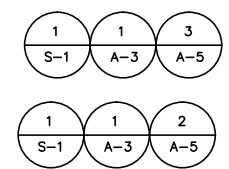
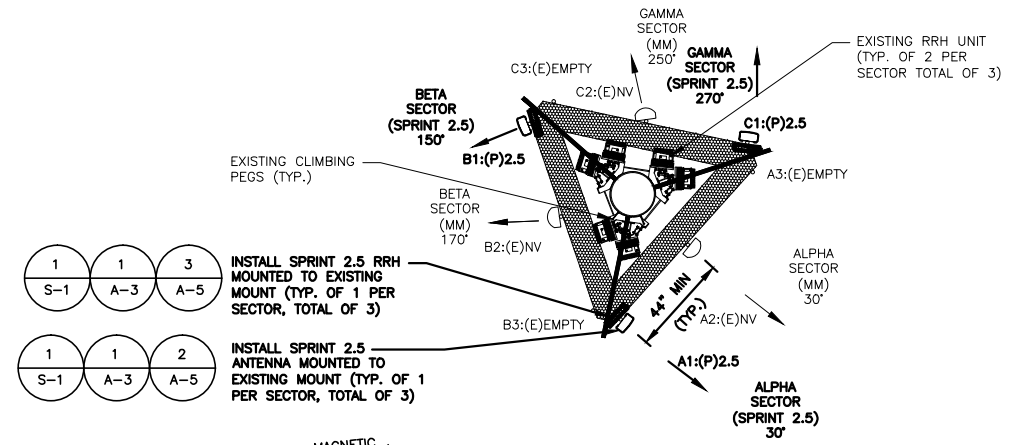


EXISTING PARTIAL ELEVATION PHOTO DETAIL
SCALE: N.T.S.

SPECIAL WORK NOTE:
JUMPERS FROM 2.5 RRH TO 2.5 ANTENNA CAN NOT EXCEED 15'. NOTIFY SPRINT CONSTRUCTION MANAGER OF ANY DISCREPANCY.

NOTES:
1) VERIFY PROPOSED AZIMUTHS WITH RF ENGINEER PRIOR TO INSTALLATION.

ANTENNA STATUS LEGEND:
EMPTY - EMPTY PIPE
(E) - EXISTING
(P) - INSTALL
NV - SPRINT ANTENNA MODEL APXVSP18-C-A20
2.5 - SPRINT ANTENNA



PROPOSED ANTENNA PLAN 3
SCALE: N.T.S. A-2

Daniel P. Hamm
STATE OF CONNECTICUT
DANIEL P. HAMM
No. 24178
LICENSED PROFESSIONAL ENGINEER

CHECKED BY: KB
APPROVED BY: DPH

SUBMITTALS

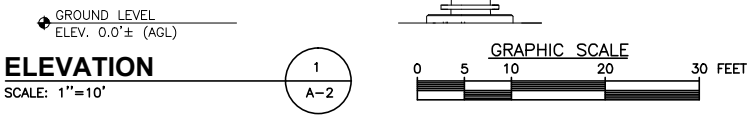
REV.	DATE	DESCRIPTION	BY
1	06/09/14	ISSUED FOR CONSTRUCTION	SF
0	05/19/14	ISSUED FOR CONSTRUCTION	SF

SITE NUMBER:
CT33XC108-F
SITE NAME:
WOODBIDGE LAKE
SEWER DISTRICT
SITE ADDRESS:
113 BRUSH HILL ROAD
GOSHEN, CT 06756

SHEET TITLE
ELEVATION AND
ANTENNA PLANS

SHEET NUMBER
A-2

NOTES:
GROUND EQUIPMENT NOT SHOWN FOR CLARITY.



1
A-2