

November 19, 2012

David Martin and
Members of the Siting Council
Connecticut Siting Council
Ten Franklin Square
New Britain, CT 06051

RE: Notice of Exempt Modification
77 Redwood Lane
Glastonbury, CT 06033
N 41° 39' 21.20"
W 72° 31' 23.71"

ORIGINAL
RECEIVED
NOV 26 2012
CONNECTICUT
SITING COUNCIL

Dear Mr. Martin and Members of the Siting Council:

On behalf of Sprint Spectrum, SBA Communications is submitting an exempt modification application to the Connecticut Siting council for modification of existing equipment at a tower facility located at 77 Redwood Lane Glastonbury, CT.

The 77 Redwood Lane facility consists of a 180' MONOPOLE Tower owned and operated by SBA Communications. In order to accommodate technological changes and enhance system performance in the State of Connecticut, Sprint Spectrum plans to modify the equipment configurations at many of its existing cell sites. Please accept this letter and attachments as notification, pursuant to R.C.S.A. Section 16-50j-73, of construction which constitutes an exempt modification pursuant to R.C.S.A. Section 16-50j-72(b)(2). In compliance with R.C.S.A. Section 16-50j-73, a copy of this letter and attachments is being sent to the chief elected official of the municipality in which the affected cell site is located.

As part of Sprint's Network Vision modification project, Sprint desires to upgrade their equipment to meet the new standards of 4G technology. The new antennas and associated equipment will allow customers to download files and browse the internet at a high rate of speed while also allowing their phones to be compatible with the latest 4G technology.

Attached is a summary of the planned modifications, including power density calculations reflecting the change in Sprint's operations at the site along with the required fee of \$625.

The changes to the facility do not constitute modifications as defined in Connecticut General Statutes ("C.G.S.") Section 16-50i(d) because the general physical characteristics of the facility will not be



significantly changed or altered. Rather, the planned changes to the facility fall squarely within those activities explicitly provided for in R.C.S.A. Section 16-50j-72(b)(2).

1. The overall height of the structure will be unaffected.
2. The proposed changes will not extend the site boundaries. There will be no effect on the site compound other than the new equipment cabinets.
3. The proposed changes will not increase the noise level at the existing facility by six decibels or more.
4. The changes in radio frequency power density will not increase the calculated "worst case" power density for the combined operations at the site to a level at or above the applicable standard for uncontrolled environments as calculated for a mixed frequency site.

For the foregoing reasons, SBA Communications on behalf of Sprint Spectrum, respectfully submits that he proposed changes at the referenced site constitute exempt modifications under R.C.S.A. Section 16-50j-72(b)(2).

Please feel free to call me at (508) 614-0389 with any questions you may have concerning this matter.

Thank you,

Rick Woods
SBA Communications Corporation
33 Boston Post Road West Suite 320
Marlborough, MA 01752
508-251-1691 x 319 + T
508-251-1755 + F
508-614-0389 + C
rwoods@sbsite.com

SBA

Sprint Spectrum
Equipment Modification

77 Redwood Lane Glastonbury, CT
Site number CT33XC546

Tower Owner: SBA Communications Corporation

Equipment Configuration: MONOPOLE Tower

Current and/or approved: Six (6) CDMA Antennas @ 157'
Six (6) lines of 1-5/8" coax
Two (2) equipment cabinets

Planned Modifications: Install One (1) Fiber Distribution Box
Install Three (3) RRHs on ground inside existing lease area
Replacing Two (2) equipment cabinets with Two (2) new equipment cabinets

Structural Information:

No Structural information is required as there will be no work performed on the tower. Ground work only.

Power Density:

The anticipated Maximum Composite contributions from the Sprint facility are 5.244% of the allowable FCC established general public limit. The anticipated composite MPE value for this site assuming all carriers present is 40.124% of the allowable FCC established general public limit sampled at the ground level.

Site Composite MPE %	
Carrier	MPE %
Sprint	5.244%
T-Mobile	2.160%
Pocket	3.15%
Verizon Wireless	12.44%
AT&T	17.13%
Total Site MPE %	40.124%



SBA



November 19, 2012

Honorable Richard Johnson
First Selectman
Town of Glastonbury
2155 Main Street
Glastonbury, CT 06033

RE: Telecommunications Facility- 77 Redwood Lane Glastonbury, CT 06033

Dear Mr. Johnson,

In order to accommodate technological changes and enhance system performance in the State of Connecticut, Sprint Spectrum will be changing its equipment configuration at certain cell sites.

As required by Regulations of Connecticut State Agencies (R.C.S.A.) Section 16-50j-73, the Connecticut Siting Council has been notified of the changes and will review Sprint's proposal. Please accept this letter as notification under Section 16-50j-73 of construction which constitutes an exempt modification pursuant to R.C.S.A. Section 16-50j-72(b)(2).

The accompanying letter to the Siting Council fully describes Sprint's proposal for the referenced cell site. However, if you have any questions or require any further information on our plans or the Siting Council's procedures, please call me at (508) 614-0389.

Thank you,

Rick Woods
SBA Communications Company
33 Boston Post Road West Suite 320
Marlborough, MA 01752
508-251-1691 x 319 + T
508-251-1755 + F
508-614-0389 + C
rwoods@sbsite.com

**RADIO FREQUENCY EMISSIONS ANALYSIS REPORT
EVALUATION OF HUMAN EXPOSURE POTENTIAL
TO NON-IONIZING EMISSIONS**

Sprint Existing Facility

Site ID: CT33XC546

**Glastonbury South SBA
77 Redwood Lane
Glastonbury, CT 06033**

October 29, 2012



EBI Consulting

environmental | engineering | due diligence

October 29, 2012

Sprint

Attn: RF Engineering Manager
1 International Boulevard, Suite 800
Mahwah, NJ 07495

Re: Emissions Values for Site: **CT33XC546 – Glastonbury South SBA**

EBI Consulting was directed to analyze the proposed upgrades to the existing Sprint facility located at 77 Redwood Lane, Glastonbury, CT, for the purpose of determining whether the emissions from the proposed Sprint equipment upgrades on this property are within specified federal limits.

All information used in this report was analyzed as a percentage of current Maximum Permissible Exposure (% MPE) as listed in the FCC OET Bulletin 65 Edition 97-01 and ANSI/IEEE Std C95.1. The FCC regulates Maximum Permissible Exposure in units of microwatts per square centimeter ($\mu\text{W}/\text{cm}^2$). The number of $\mu\text{W}/\text{cm}^2$ calculated at each sample point is called the power density. The exposure limit for power density varies depending upon the frequencies being utilized. Wireless Carriers and Paging Services use different frequency bands each with different exposure limits, therefore it is necessary to report results and limits in terms of percent MPE rather than power density.

All results were compared to the FCC (Federal Communications Commission) radio frequency exposure rules, 47 CFR 1.1307(b)(1) – (b)(3), to determine compliance with the Maximum Permissible Exposure (MPE) limits for General Population/Uncontrolled environments as defined below.

General population/uncontrolled exposure limits apply to situations in which the general public may be exposed or in which persons who are exposed as a consequence of their employment may not be made fully aware of the potential for exposure or cannot exercise control over their exposure. Therefore, members of the general public would always be considered under this category when exposure is not employment related, for example, in the case of a telecommunications tower that exposes persons in a nearby residential area.

Public exposure to radio frequencies is regulated and enforced in units of microwatts per square centimeter ($\mu\text{W}/\text{cm}^2$). The general population exposure limit for the cellular band is approximately $567 \mu\text{W}/\text{cm}^2$, and the general population exposure limit for the PCS band is $1000 \mu\text{W}/\text{cm}^2$. Because each carrier will be using different frequency bands, and each frequency band has different exposure limits, it is necessary to report percent of MPE rather than power density.



EBI Consulting

environmental | engineering | due diligence

Occupational/controlled exposure limits apply to situations in which persons are exposed as a consequence of their employment and in which those persons who are exposed have been made fully aware of the potential for exposure and can exercise control over their exposure. Occupational/controlled exposure limits also apply where exposure is of a transient nature as a result of incidental passage through a location where exposure levels may be above general population/uncontrolled limits (see below), as long as the exposed person has been made fully aware of the potential for exposure and can exercise control over his or her exposure by leaving the area or by some other appropriate means.

Additional details can be found in FCC OET 65.

CALCULATIONS

Calculations were done for the proposed upgrades to the existing Sprint Wireless antenna facility located at 77 Redwood Lane, Glastonbury, CT, using the equipment information listed below. All calculations were performed per the specifications under FCC OET 65. All calculations were performed assuming the main lobe of the antenna was focused at the base of the tower to present a worst case scenario. Actual values seen from this site will be dramatically less than those shown in this report. For this report the sample point is the top of a 6 foot person standing at the base of the tower.

For all calculations, all emissions were calculated using the following assumptions:

- 1) 2 CDMA Carriers (1900 MHz) were considered for each sector of the proposed installation.
- 2)
- 3) All radios at the proposed installation were considered to be running at full power and were uncombined in their RF transmissions paths per carrier prescribed configuration. Per FCC OET Bulletin No. 65 - Edition 97-01 recommendations to achieve the maximum anticipated value at each sample point, all power levels emitting from the proposed antenna installation are increased by a factor of 2.56 to account for possible in-phase reflections from the surrounding environment. This is rarely the case, and if so, is never continuous.
- 4) For the following calculations the sample point was the top of a six foot person standing at the base of the tower. The actual gain in this direction was used per the manufactures supplied specifications.
- 5) The antenna used in this modeling is the DB980H90E-M. This is based on feedback from the carrier with regards to anticipated antenna selection. This antenna has a 14.95 dBd gain value at its main lobe at 1900 MHz. All calculations were performed assuming the main lobe of the antenna was focused at the base of the tower to present a worst case scenario.



EBI Consulting

environmental | engineering | due diligence

- 6) The antenna mounting height centerline of the proposed antennas is **157.4 feet** above ground level (AGL)
- 7) Emissions values for additional carriers were taken from the Connecticut Siting Council active database. Values in this database are provided by the individual carriers themselves.

All calculation were done with respect to uncontrolled / general public threshold limits

<div> <div>Site ID</div> <div>CT3XCS46 - Glastonbury South 98A</div> </div> <div> <div>Site Address</div> <div>77 Redwood Lane, Glastonbury, CT, 06033</div> </div> <div> <div>Site Type</div> <div>Monopole</div> </div>											
Sector 1											
Antenna Number	Antenna Make	Antenna Model	Radio Type	Frequency Band	Technology	Power Out Per Channel (Watts)	Number of Channels	Composite Power	Antenna Gain in direction of sample point (dBi)	Antenna analysis height (ft)	Power Density Percentage
1a	Decibel	DB980H90E-M	RRH	1900 MHz	CDMA / LTE	20	2	40	14.95	157.4	1.74789%
Sector total Power Density Value: 1.748%											
Sector 2											
Antenna Number	Antenna Make	Antenna Model	Radio Type	Frequency Band	Technology	Power Out Per Channel (Watts)	Number of Channels	Composite Power	Antenna Gain in direction of sample point (dBi)	Antenna analysis height (ft)	Power Density Percentage
2a	Decibel	DB980H90E-M	RRH	1900 MHz	CDMA / LTE	20	2	40	14.95	157.4	1.74789%
Sector total Power Density Value: 1.748%											
Sector 3											
Antenna Number	Antenna Make	Antenna Model	Radio Type	Frequency Band	Technology	Power Out Per Channel (Watts)	Number of Channels	Composite Power	Antenna Gain in direction of sample point (dBi)	Antenna analysis height (ft)	Power Density Percentage
3a	Decibel	DB980H90E-M	RRH	1900 MHz	CDMA / LTE	20	2	40	14.95	157.4	1.74789%
Sector total Power Density Value: 1.748%											

Site Composite MPE %		
Carrier	Sprint	MPE %
		5.244%
T-Mobile		2.160%
Verizon Wireless		3.15%
AT&T		17.19%
Total Site MPE %		40.224%

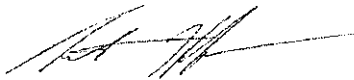
Summary

All calculations performed for this analysis yielded results that were well within the allowable limits for general public exposure to RF Emissions.

The anticipated Maximum Composite contributions from the Sprint facility are **5.244% (1.748% from each sector)** of the allowable FCC established general public limit considering all three sectors simultaneously sampled at the ground level.

The anticipated composite MPE value for this site assuming all carriers present is **40.124%** of the allowable FCC established general public limit sampled at the ground level. This is based upon values listed in the Connecticut Siting Council database for existing carrier emissions

FCC guidelines state that if a site is found to be out of compliance (over allowable thresholds), that carriers over a 5% contribution to the composite value will require measures to bring the site into compliance. For this facility, the composite values calculated were well within the allowable 100% threshold standard per the federal government



Scott Heffernan
RF Engineering Director

EBI Consulting
21 B Street
Burlington, MA 01803



SITE NUMBER:

CT33XC546

SITE NAME:

S GLASTONBURY - GLASTONBURY SOUTH - SBA

SITE ADDRESS:

**77 REDWOOD LANE
GLASTONBURY, CT**

NOTE:
OWNER AND TENANT MAY, FROM TIME TO TIME AT TENANT'S OPTION, REPLACE THIS EXHIBIT WITH AN EXHIBIT SETTING FORTH THE LEGAL DESCRIPTION OF THE SITE, OR WITH ENGINEERED OR AS-BUILT DRAWING DEPICTING THE SITE OR ILLUSTRATING STRUCTURAL MODIFICATIONS OR CONSTRUCTION PLANS OF THE SITE. ANY VISUAL OR TEXTUAL REPRESENTATION OF THE EQUIPMENT LOCATED WITHIN THE SITE CONTAINED IN THESE OTHER DOCUMENTS IS ILLUSTRATIVE ONLY, AND DOES NOT LIMIT THE RIGHTS OF SPRINT AS PROVIDED FOR IN THE AGREEMENT. THE LOCATIONS MAY BE DETERMINED BY TENANT AND/OR THE SERVICING UTILITY COMPANY IN COMPLIANCE WITH LOCAL LAWS AND REGULATIONS.



CONNECTICUT LAW REQUIRES
TWO WORKING DAYS NOTICE PRIOR TO
ANY EARTH MOVING ACTIVITIES BY
CALLING 800-922-4455 OR DIAL 811

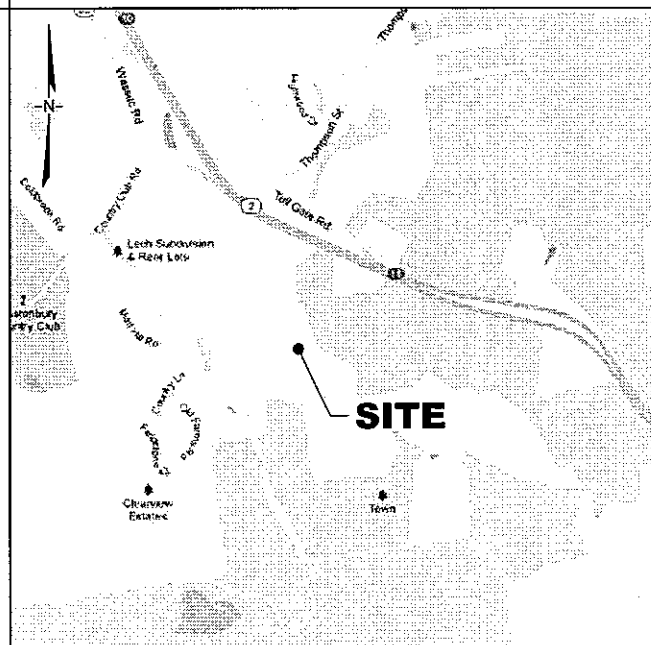
SBA SITE #: CT02216-S-02
SBA SITE NAME: GLASTONBURY

SITE INFORMATION

SITE ID NUMBER:	CT33XC546	LOCAL POWER COMPANY:	NORTHEAST UTILITIES
SITE NAME:	S GLASTONBURY - GLASTONBURY SOUTH - SBA	LOCAL TELEPHONE COMPANY:	SOUTHERN NEW ENGLAND TELEPHONE
SITE ADDRESS:	77 REDWOOD LANE GLASTONBURY, CT	APPLICANT:	SPRINT 1 INTERNATIONAL BLVD - SUITE 800 MAHWAH, NJ 07495 PHONE: (201) 684-4000
COUNTY:	HARTFORD COUNTY	APPLICANT REPRESENTATIVE:	ALCATEL-LUCENT 1 ROBBINS ROAD WESTFORD, MA 01886 PHONE: (978) 952-1600
COORDINATES(*):	N 41° 39' 21.20" W 72° 31' 23.71"	SITE ACQUISITION REPRESENTATIVE:	SBA COMMUNICATIONS CORPORATION ONE RESEARCH DRIVE, SUITE 200C WESTBOROUGH, MA 01581
GROUND ELEVATION(*):	180' AMSL	ARCHITECT/ENGINEER:	COM-EX CONSULTANTS 4 SECOND AVENUE DENVER, NJ 07834 PHONE (862) 209-4300
STRUCTURE TYPE:	MONOPOLE		
STRUCTURE HEIGHT:	180' AGL		
ANTENNA HEIGHT (RAD CENTER) (**):	SECTOR 1: ±157.4' AGL SECTOR 2: ±157.4' AGL SECTOR 3: ±157.4' AGL		
PROPERTY OWNER:	SBA PROPERTIES, INC. 5900 BROKEN SOUND PARKWAY BOCA RATON, FL 33487		
STRUCTURE OWNER:	SBA PROPERTIES, INC. 5900 BROKEN SOUND PARKWAY BOCA RATON, FL 33487		

(*) SOURCE OF COORDINATES/ELEVATION - SBA AND
SPRINT SITERRA DATABASE

VICINITY MAP (NOT TO SCALE)



CONSTRUCTION DRAWING SHEET INDEX

SHEET NUMBER:	SHEET DESCRIPTION
T-1	TITLE SHEET
GN-1	GENERAL NOTES
A-1	COMPOUND PLAN AND ELEVATION
A-2	EQUIPMENT LAYOUT
A-3	DETAILS & ANTENNA SCENARIO
A-4	RF DATA SHEET
A-5	CABINET AND ANTENNA WIRING DIAGRAM
E-1	ELECTRIC, TELCO, GROUNDING PLANS AND DETAILS
E-2	TYPICAL POWER AND GROUNDING ONE-LINE DIAGRAM

AAV DRAWING SHEET INDEX

SHEET NUMBER:	SHEET DESCRIPTION
T-1	TITLE SHEET
C-1	SITE SURVEY PHOTOS 1
C-2	SITE SURVEY PHOTOS 2
C-3	SITE PLAN
C-4	SPECIFICATIONS & DETAILS

GENERAL NOTES

- THIS IS AN UNMANNED TELECOMMUNICATIONS FACILITY AND NOT FOR HUMAN HABITATION:
 - HANDICAP ACCESS REQUIREMENTS ARE NOT REQUIRED
 - FACILITY HAS NO PLUMBING OR REFRIGERANTS
 - THIS FACILITY SHALL MEET OR EXCEED ALL FAA AND FCC REGULATOR REQUIREMENTS
- CONTRACTOR SHALL VERIFY ALL PLANS AND EXISTING DIMENSIONS AND CONDITIONS ON THE JOB SITE AND SHALL IMMEDIATELY NOTIFY THE PROJECT OWNER'S REPRESENTATIVE IN WRITING OF DISCREPANCIES BEFORE PROCEEDING WITH THE WORK OR BE RESPONSIBLE FOR SAME.
- DEVELOPMENT AND USE OF THE SITE WILL CONFORM TO ALL APPLICABLE CODES AND ORDINANCES.
BUILDING CODE: 2003 IBC; 2003 IRC (STATE BUILDING CODE, 2005 CT SUPPLEMENT)
ELECTRICAL CODE: 2005 NEC (NFPA-70)

SCOPE OF WORK

- SPRINT PROPOSES TO MODIFY THIS EXISTING WIRELESS COMMUNICATIONS FACILITY AS FOLLOWS:
- ONE (1) EXISTING CDMA OUTDOOR EQUIPMENT CABINET TO BE REPLACED WITH ONE (1) MULTIMODAL EQUIPMENT CABINET WITHIN THE EXISTING SPRINT LEASE AREA.
 - ONE (1) EXISTING POWERHOUSE CABINET TO BE REPLACED WITH ONE (1) BATTERY CABINET.
 - ONE (1) PROPOSED FIBER DISTRIBUTION BOX (FIBER DISTRIBUTION BOX) INSTALLED ON PROPOSED H-FRAME WITHIN EXISTING SPRINT LEASE AREA.
 - THREE (3) PROPOSED RRHS INSTALLED ON PROPOSED H-FRAME WITHIN EXISTING SPRINT LEASE AREA.
 - SIX (6) EXISTING ANTENNAS AND COAXIAL CABLE TO REMAIN, NO CHANGES EXCEPT FOR BOTTOM JUMPERS.
 - EXISTING LOCAL EXCHANGE CARRIER LANDLINE BACKHAUL FACILITIES TO BE REPLACED WITH PROPOSED ALTERNATIVE ACCESS VENDOR (AAV) FIBER OPTIC FACILITIES INCLUDING PROPOSED OVERHEAD/UNDERGROUND CONDUITS AND NETWORK INTERFACE DEVICE.

APPROVALS

THE FOLLOWING PARTIES HEREBY APPROVE AND ACCEPT THESE DOCUMENTS AND AUTHORIZE THE CONTRACTOR TO PROCEED WITH THE CONSTRUCTION DESCRIBED HEREIN. ALL DOCUMENTS ARE SUBJECT TO REVIEW BY THE LOCAL BUILDING DEPARTMENT AND MAY IMPOSE CHANGES OR MODIFICATIONS.

CONSTRUCTION:	DATE
LEASING/ SITE ACQUISITION	DATE
R.F. ENGINEER	DATE
LANDLORD/ PROPERTY OWNER	DATE

Sprint
VISION
1 INTERNATIONAL BLVD, SUITE 800
MAHWAH, NJ 07495
PHONE: (201) 684-4000 FAX (201) 684-4223

Alcatel-Lucent
1 ROBBINS ROAD
WESTFORD, MA 01886
OFFICE: (978) 692-1153

SBA
SBA COMMUNICATION CORP.
5900 BROKEN SOUND PARKWAY
BOCA RATON, FL 33487
TEL: (561) 226-9523
FAX: (561) 226-3572

COM-EX
Consultants
4 SECOND AVENUE
SUITE 204
DENVER, NJ 07834
PHONE: 862.209.4300
FAX: 862.209.4301

INFORMATION ON THIS SET OF DRAWINGS IS
NOT FOR OFFICIAL USE UNLESS
ACCOMPANIED BY THE STAMPED SEAL &
SIGNATURE OF A PROFESSIONAL ENGINEER



NICHOLAS D. BARILE
PROFESSIONAL ENGINEER CT LIC No. 28643

SCHEDULE OF REVISIONS

REV. NO.	DATE	DESCRIPTION OF CHANGES
1	10/05/12	REVISED PER CLIENT COMMENTS
2	09/18/12	CONSTRUCTION REVIEW

DRAWN BY: PEC
CHECKED BY: NB
SCALE: AS NOTED
JOB NO: 12037-SBA

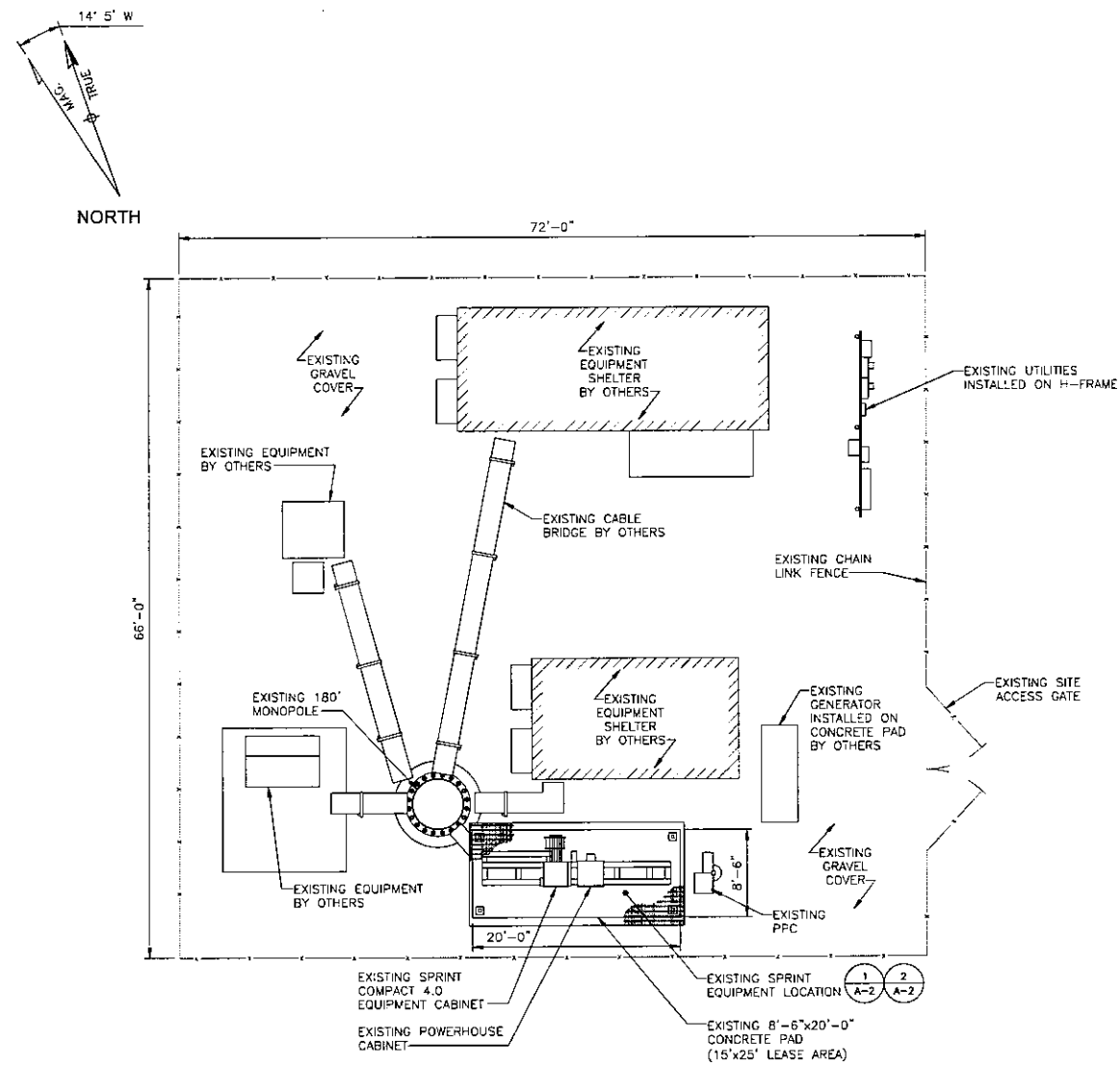
CT33XC546
S, GLASTONBURY - GLASTONBURY SOUTH - SBA
77 REDWOOD LANE
GLASTONBURY, CT
HARTFORD COUNTY

DRAWING TITLE:

TITLE SHEET

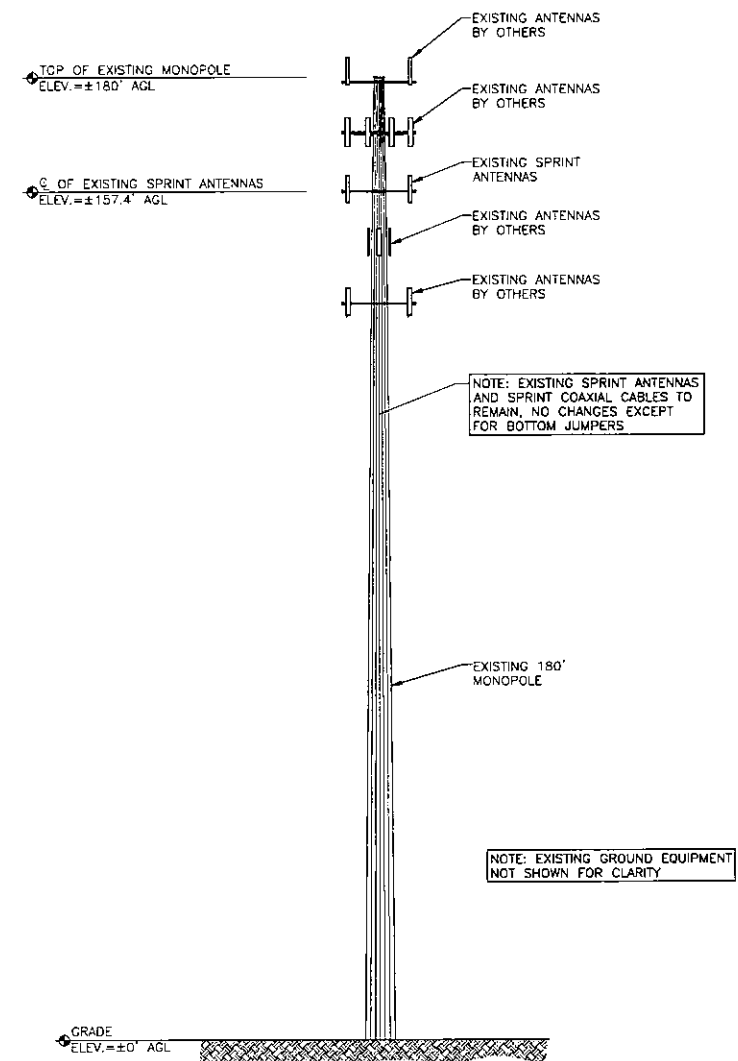
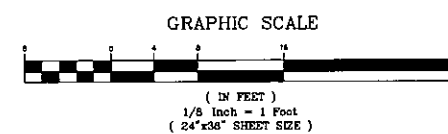
DRAWING SHEET: 1 OF 9

T-1



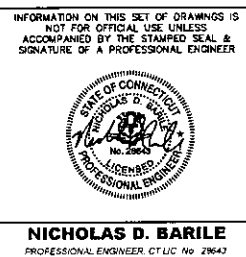
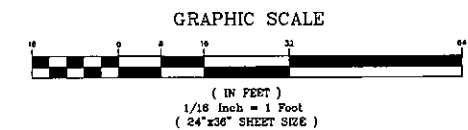
1
A-1

EXISTING COMPOUND PLAN
SCALE: 1/8"=1'



2
A-1

EXISTING TOWER ELEVATION
SCALE: 1/16"=1'



SCHEDULE OF REVISIONS		
8		
8		
7		
6		
5		
4		
3		
2	10/05/12	REVISED PER CLIENT COMMENTS
1	09/18/12	CONSTRUCTION REVIEW
REV. NO.	DATE	DESCRIPTION OF CHANGES
DRAWN BY:		PEC
CHECKED BY:		NB
SCALE:		AS NOTED
JOB NO:		12037-SBA

CT33XC546
S. GLASTONBURY - GLASTONBURY SOUTH -SBA
77 REDWOOD LANE
GLASTONBURY, CT
HARTFORD COUNTY

DRAWING TITLE:

**COMPOUND PLAN
& ELEVATION**

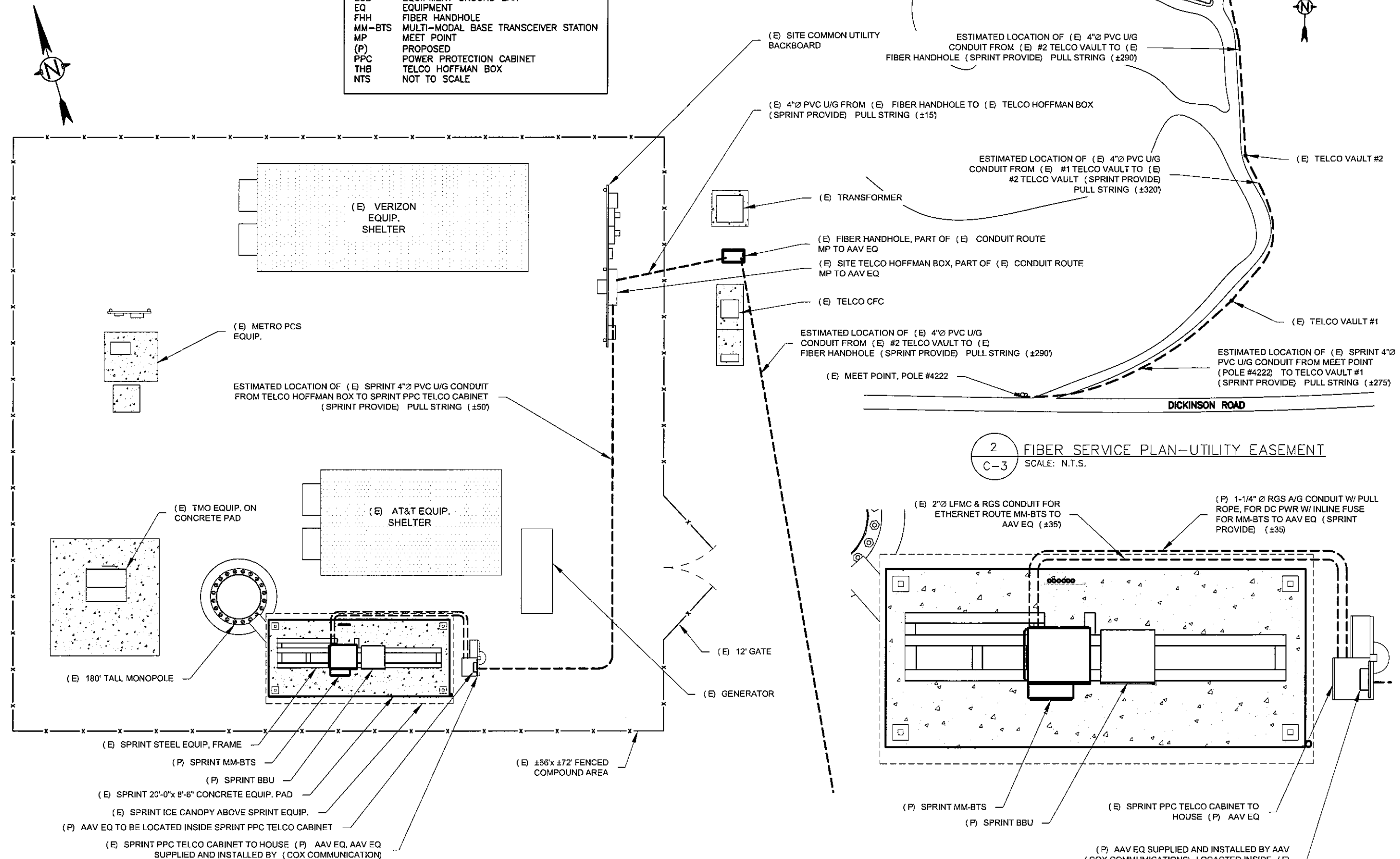
DRAWING SHEET: 3 OF 9

A-1

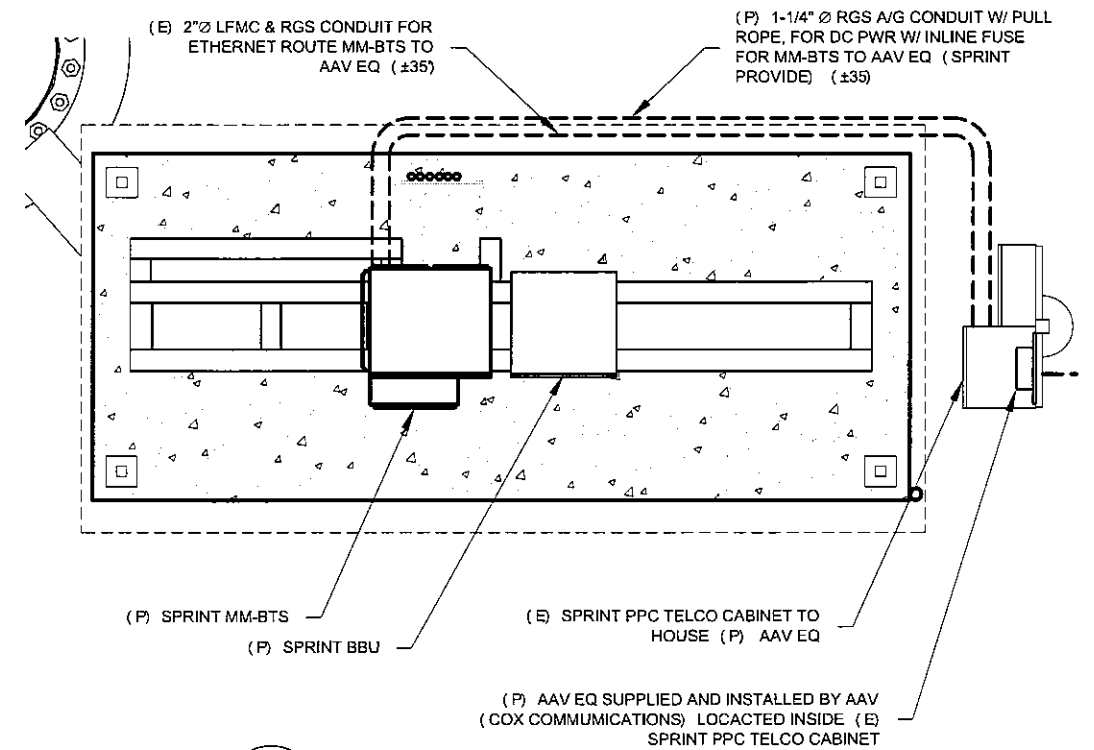
NOTE:
AAV (COX COMMUNICATION) TO SUPPLY AND INSTALL
MULTI-MODAL FIBER CABLE THROUGH CONDUIT ROUTE
MP TO SPRINT PPC TELCO CABINET

ABBREVIATIONS

AAV	ALTERNATE ACCESS VENDER
AGL	ABOVE GROUND LEVEL
BBU	BATTERY BACKUP UNIT
(E)	EXISTING
EGB	EQUIPMENT GROUND BAR
EQ	EQUIPMENT
FHH	FIBER HANDHOLE
MM-BTS	MULTI-MODAL BASE TRANSCEIVER STATION
MP	MEET POINT
(P)	PROPOSED
PPC	POWER PROTECTION CABINET
THB	TELCO HOFFMAN BOX
NTS	NOT TO SCALE



2 FIBER SERVICE PLAN-UTILITY EASEMENT
C-3 SCALE: N.T.S.



3 FIBER SERVICE PLAN-EQUIPMENT SPACE
C-3 SCALE: N.T.S.

1 FIBER SERVICE PLAN
C-3 SCALE: 3/32"=1'-0"

4 0 4 8 12 FT
SCALE 3/32"=1'-0"

COM-EX
Consultants
4 SECOND AVENUE
SUITE 204
DENVER, CO 80202
PHONE: 303.733.4300
FAX: 303.733.4301
NEW JERSEY STATE BOARD OF PROFESSIONAL ENGINEERS
CERTIFICATE OF AUTHORIZATION # 000000000

Sprint
Together with Nextel.
1 INTERNATIONAL BLVD, SUITE 900
MAHWAH, NJ 07495
PHONE: (201) 684-4000 FAX: (201) 684-4223

SBA
SBA COMMUNICATIONS CORP.
ONE RESEARCH DRIVE, SUITE 200C
WESTBOROUGH, MA 01581
TEL: (508) 366-5535
FAX: (508) 366-5507

Alcatel-Lucent
1 ROBINS ROAD
WESTFORD, MA 01886
TEL: (978) 952-1600

SCHEDULE OF REVISIONS

REV NO.	DATE	DESCRIPTION OF CHANGES
5		
4		
3		
2		
1		
0	09/17/12	INITIAL SUBMISSION

DRAWN BY: ELP
CHECKED BY: JCP
SCALE: AS NOTED
JOB NO: 12037-SBA

Documents prepared by Com-Ex Consultants, including this document, are to be used only for the specific project and specific use for which they were intended. Any extension of use to any other projects, by owner or by any other party, without the expressed written consent of Com-Ex Consultants, is done unlawfully and at the users own risk. If used in a way other than that specifically intended, user will hold Com-Ex Consultants, harmless from all claims and losses.

CT33XC546

175 DICKINSON ROAD
GLASTONBURY, CT 06073

DRAWING TITLE:

SITE PLAN

DRAWING SHEET: 1 OF 4

C-3