



STATE OF CONNECTICUT

CONNECTICUT SITING COUNCIL

136 Main Street, Suite 401
New Britain, Connecticut 06051
Phone: 827-7682

January 7, 1992

Peter J. Tyrrell, Esq.
Senior Attorney
Springwich Cellular Limited Partnership
555 Long Wharf Drive, Room 750
New Haven, CT 06506

RE: Springwich Cellular Limited Partnership notice of intent to modify and existing telecommunications tower and associated equipment located on Scott Road in East Lyme, Connecticut.

Dear Attorney Tyrrell:

At a meeting held January 6, 1992, the Connecticut Siting Council acknowledged your notice of an exempt modification for an existing tower site on Scott Road in East Lyme, Connecticut.

As proposed in your notices dated December 17, 1991 and December 24, 1991, the modification is in compliance with the exception criteria specified in Regulations of State Agencies 16-50j-72 for changes to an existing facility site that would not increase the tower height, extend the boundary of the tower site, increase noise levels at the tower site boundary by 6 decibels, and add radio frequency transmitting capability which increases the total power density measured at the tower site boundary to or above the standard adopted by the State Department of Environmental Protection pursuant to Section 22a-162 of the Connecticut General Statutes.

The Council is pleased to note that the shared use of existing towers meets the Council's long-time goal and the public interest to avoid proliferation of additional tower structures.

Very truly yours,

A handwritten signature in cursive script, reading "Mortimer A. Gelston" followed by a stylized flourish.

Mortimer A. Gelston
Chairman

MAG/RKE/cp

5766E



STATE OF CONNECTICUT

CONNECTICUT SITING COUNCIL

136 Main Street, Suite 401
New Britain, Connecticut 06051
Phone: 827-7682

December 26, 1991

TO: Mortimer A. Gelston
Chairman
Commissioner Clifton A. Leonhardt
Commissioner Timothy R.E. Keeney
Harry E. Covey
Daniel P. Lynch, Jr.
Gloria Dibble Pond
Paulann H. Sheets
William H. Smith
Colin C. Tait

FROM: Stanley J. Modzelesky, Executive Assistant *SJM*

RE: **Springwich Cellular Limited Partnership notice of intent to modify an existing telecommunications tower and associated equipment located on Scott Road in East Lyme, Connecticut.**

Springwich Cellular Limited Partnership notice of intent to modify an existing telecommunications tower and associated equipment located on Nell's Rock Road in Shelton, Connecticut.

Enclosed please find copies of addendums to Springwich Cellular Limited Partnership notice of intent to modify exempt towers and associated equipment which will be on the next agenda.

SJM/bd

Enclosure

cc: Commissioner Richard Patterson
Brian Emerick

4620E

Springwich Cellular Limited Partnership
555 Long Wharf Drive, Room 750
New Haven, Connecticut 06511
Phone (203) 553-7600

SPRINGWICH CELLULAR LIMITED PARTNERSHIP

December 24, 1991

Mortimer A. Gelston, Chairman
Connecticut Siting Council
136 Main Street, Suite 401
New Britain, Connecticut 06051

RECEIVED

DEC 26 1991

CONNECTICUT
SITING COUNCIL

Dear Honorable Chairman Gelston:

The following information is provided as an addendum to the Notice of Intent to Modify an Exempt Tower and Associated Equipment for facilities operated by the Springwich Cellular Limited Partnership (SCLP) in East Lyme.

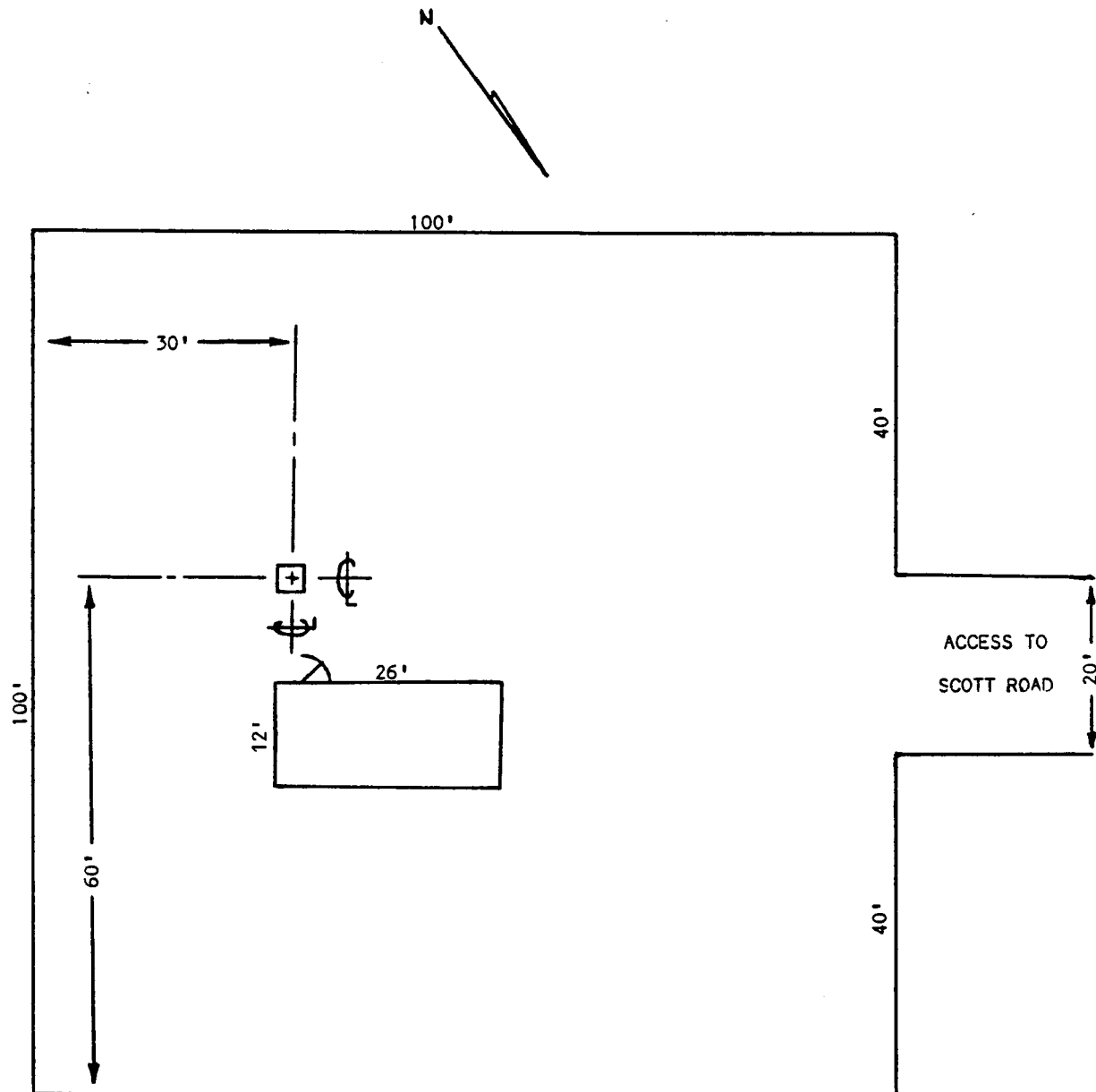
As originally granted on Docket No. 67, the 167 foot (overall height above ground level) tower is located on Scott Road, rear. The proposed six (6) foot antenna will be attached at the 153 foot level so as not to extend the overall height of the structure. Also, the associated transmitting equipment will be placed in the existing equipment building (see attached site plan) so as not to extend the site boundary.

Thank you for your cooperation.

Sincerely,

Peter J. Tynell

Attachment



Springwich Cellular Limited Partnership
555 Long Wharf Drive, Room 750
New Haven, Connecticut 06511
Phone (203) 553-7600

SPRINGWICH CELLULAR LIMITED PARTNERSHIP

December 17, 1991

Mortimer A. Gelston, Chairperson
Connecticut Siting Council
136 Main Street Suite 401
New Britain, Connecticut 06051

RECEIVED

DEC 18 1991

CONNECTICUT
SITING COUNCIL

Dear Honorable Chairman Gelston:

Enclosed please find a Notice of Intent to Modify an Exempt Tower and Associated Equipment for facilities operated by the Springwich Limited Cellular Partnership (SCLP). SNET Paging, Inc. (SPI), an affiliate of SNET Cellular, Inc., general partner of SCLP, proposes to add an antenna to this site to be used in providing its paging service.

Attached is a page detailing the required information. As is shown in the attachment, the proposed addition meets all the necessary criteria established in the Regulations of Connecticut State Agencies, Section 16-50j-72(b)(2) and is thus an exempt facility pursuant to Section 16-50j-73.

Please record me as counsel for both SCLP and SPI in this matter and in all correspondence from the Council.

Thank you for your cooperation.

Sincerely,

Peter J. Tyrell

cc: Honorable David L. Cini, First Selectman, Town of East Lyme,
P.O. Box 519, Niantic, Connecticut 06357

East Lyme, Connecticut

Pursuant to Section 16-50i(a)(5) of the Connecticut General Statutes and Section 16-50j-72(b)(2), as amended, of the Regulations of Connecticut State Agencies, Springwich Limited Cellular Partnership hereby notifies the Connecticut Siting Council that it intends to modify an existing telecommunications facility by the addition of a paging service antenna. The site is located on Scott Road, East Lyme, Connecticut.

DISCUSSION

The proposed additional antenna will not increase the overall height of the existing tower.

The power density in the cellular and paging frequency bands is set forth below. The level shown indicates the total power density in milliwatts per square centimeter.

<u>SERVICE</u>	<u>LOCATION</u>	<u>DISTANCE</u>	<u>EXISTING</u>	<u>INCREASE IN</u>	<u>TOTAL</u>	<u>ANSI/STATE</u>	<u>PERCENT OF</u>
	<u>HEIGHT</u>	<u>TO ANTENNA</u>					
	<u>AMSL FT.</u>	<u>CENTERLINE</u>	<u>POWER DENSITY</u>	<u>POWER DENSITY</u>	<u>POWER DENSITY</u>	<u>STANDARD</u>	<u>ANSI/STATE</u>
		<u>FEET</u>	<u>mW/cm²</u>	<u>mW/cm²</u>	<u>mW/cm²</u>	<u>mW/cm²</u>	<u>STANDARD</u>
SCLP	353	159	0.1002	0.0	0.1002	2.933	3.42
Paging	353	156	0.0	0.02271	0.02271	3.103	0.73

The current Connecticut (and ANSI) power density level standard for non-ionizing radiation in the 931 MHz frequency band is 3.103 milliwatts/cm². The level demonstrated in this case is well below the standard levels.

The proposed addition does not constitute a "modification" of an existing facility as defined in Connecticut General Statutes, Section 16-50i(d). This is because there is no change in the tower's height. There is no extension of the boundaries of the tower site. There will be no increase in noise levels at the tower's boundary by six decibels or more, and the total radio frequency electromagnetic radiation is not at or above the standard set forth in Section 22(a)-162 of the Connecticut General Statutes. This addition will not have a substantially adverse environmental effect.

For the reasons discussed above, Springwich Cellular Limited Partnership requests the Council to acknowledge that the Notice of Modification meets the Council's exemption criteria.