



# STATE OF CONNECTICUT

## CONNECTICUT SITING COUNCIL

Ten Franklin Square, New Britain, CT 06051

Phone: (860) 827-2935 Fax: (860) 827-2950

E-Mail: [siting.council@po.state.ct.us](mailto:siting.council@po.state.ct.us)

Web Site: [www.ct.gov/csc](http://www.ct.gov/csc)

August 16, 2004

Kenneth C. Baldwin, Esq.  
Robinson & Cole LLP  
280 Trumbull Street  
Hartford, CT 06103-3597

RE: **EM-VER-033-040729** - Cellco Partnership d/b/a Verizon Wireless notice of intent to install a temporary cellular telephone site to be located at 667 Main Street, Cromwell, Connecticut.

Dear Attorney Baldwin:

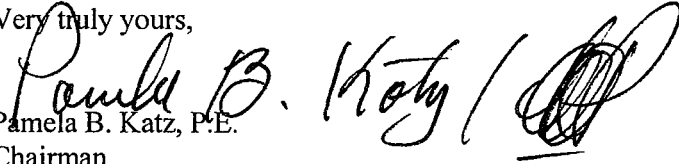
At a public meeting held on August 12, 2004, the Connecticut Siting Council (Council) acknowledged your notice to construct a temporary telecommunications facility, pursuant to Section 16-50j-73 of the Regulations of Connecticut State Agencies.

The proposed facility is to be developed as specified here and in your notice dated July 29, 2004. The facility is in compliance with the exception criteria in Section 16-50j-72 (d) of the Regulations of Connecticut State Agencies for temporary cellular service for events of statewide significance. This temporary facility has also been carefully modeled to ensure that radio frequency emissions are conservatively below State and federal standards applicable to the frequencies now used on this tower.

This decision is under the exclusive jurisdiction of the Council. Any additional change to this temporary facility will require explicit notice to this agency pursuant to Regulations of Connecticut State Agencies Section 16-50j-73. Such notice shall include all relevant information regarding the proposed change with cumulative worst-case modeling of radio frequency exposure at the closest point of uncontrolled access to the tower base, consistent with Federal Communications Commission, Office of Engineering and Technology, Bulletin 65. Any deviation from this format may result in the Council implementing enforcement proceedings pursuant to General Statutes § 16-50u including, without limitation, imposition of expenses resulting from such failure and of civil penalties in an amount not less than one thousand dollars per day for each day of construction or operation in material violation.

Thank you for your attention and cooperation.

Very truly yours,

  
Pamela B. Katz, P.E.  
Chairman

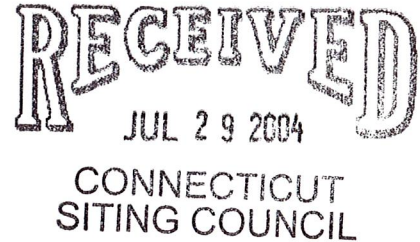
PBK/MP

c: Honorable Stanley A. Terry, Jr., First Selectman, Town of Cromwell  
Frederic Curtin, Zoning Enforcement Officer, Town of Cromwell  
Lael Libera, Cromwell Concrete Products, Inc.

Hartford, CT 06103-3597  
Main (860) 275-8200  
Fax (860) 275-8299  
kbaldwin@rc.com  
Direct (860) 275-8345

July 29, 2004

*Via Hand Delivery*



S. Derek Phelps  
Executive Director  
Connecticut Siting Council  
10 Franklin Square  
New Britain, CT 06051

Re: **Notice of Exempt Modification**  
**Buick Championship – Temporary Telecommunications Facility**  
**Cromwell, Connecticut**

Dear Mr. Phelps:

Cellco Partnership d/b/a Verizon Wireless (“Cellco”) plans to install a temporary cellular telecommunications facility for use during the Buick Championship (formerly the Greater Hartford Open) on private property located at 667 Main Street in Cromwell. This parcel is approximately .30 miles west of the River Highlands Golf Club. Please accept this letter as notification pursuant to R.C.S.A. Section 16-50j-73, for construction that constitutes an exempt modification pursuant to R.C.S.A. Section 16-50j-72(d)(2). In accordance with R.C.S.A. Section 16-50j-73, a copy of this letter is being sent to the Cromwell First Selectman, Stanley A. Terry, Jr.



*Law Offices*

BOSTON

HARTFORD

NEW LONDON

STAMFORD

GREENWICH

NEW YORK

SARASOTA

*www.rc.com*

The proposed temporary telecommunications facility will consist of a vehicle-mounted radio equipment shelter and antenna mast, commonly referred to as a “cell on wheels” or “COW” (see attachment). Cellco’s COW is approximately 31 feet in length, by 8 feet wide, by 13 feet high. The overall height of the antenna mast will be approximately 60 feet above ground level. The centerline of antennas attached to the mast will be approximately 57 feet above ground level.

The proposed temporary telecommunications facility satisfies the criteria set forth in R.C.S.A. Section 16-50j-72(d)(2) as a facility that will provide temporary cellular telephone service for an event of State-wide significance. This facility will provide temporary additional system capacity to accommodate increased communications needs

HART1-1195734-1

# ROBINSON & COLE<sup>LLP</sup>

S. Derek Phelps

July 29, 2004

Page 2

associated with the Buick Championship. The temporary facility will be placed in a designated area on property owned by Cromwell Concrete Products, Inc. located at 667 Main Street in Cromwell. The COW will begin service on or about August 18, 2004, to be available during tournament setup and will be removed approximately one week after conclusion of the event. In years past, Cellco's COW at this event was located in a designated area in the southern portion of the golf course grounds. This location is no longer available for Cellco's use.

The operation of the antennas on the COW will not result in a total radio frequency (RF) power density level at or above the Federal Communications Commission (FCC) adopted safety standard. The "worst-case" calculation for a point on the ground, adjacent to the COW, using parameters of 6 channels and 200 watts per channel, indicates that a Cellco temporary facility will result in power density levels of approximately  $0.1328 \text{ mW/cm}^2$  or 23.4% of the FCC standard.

For the foregoing reasons, Cellco respectfully submits that the proposed temporary installation for the Buick Championship constitutes an exempt modification under R.C.S.A. Section 16-50j-72(d)(2).

Sincerely,



Kenneth C. Baldwin

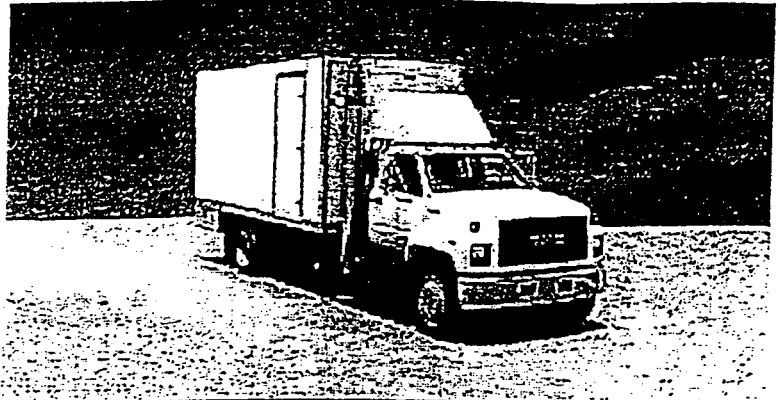
KCB/kmd

cc: Stanley A. Terry, Jr., Cromwell First Selectman  
Sandy M. Carter



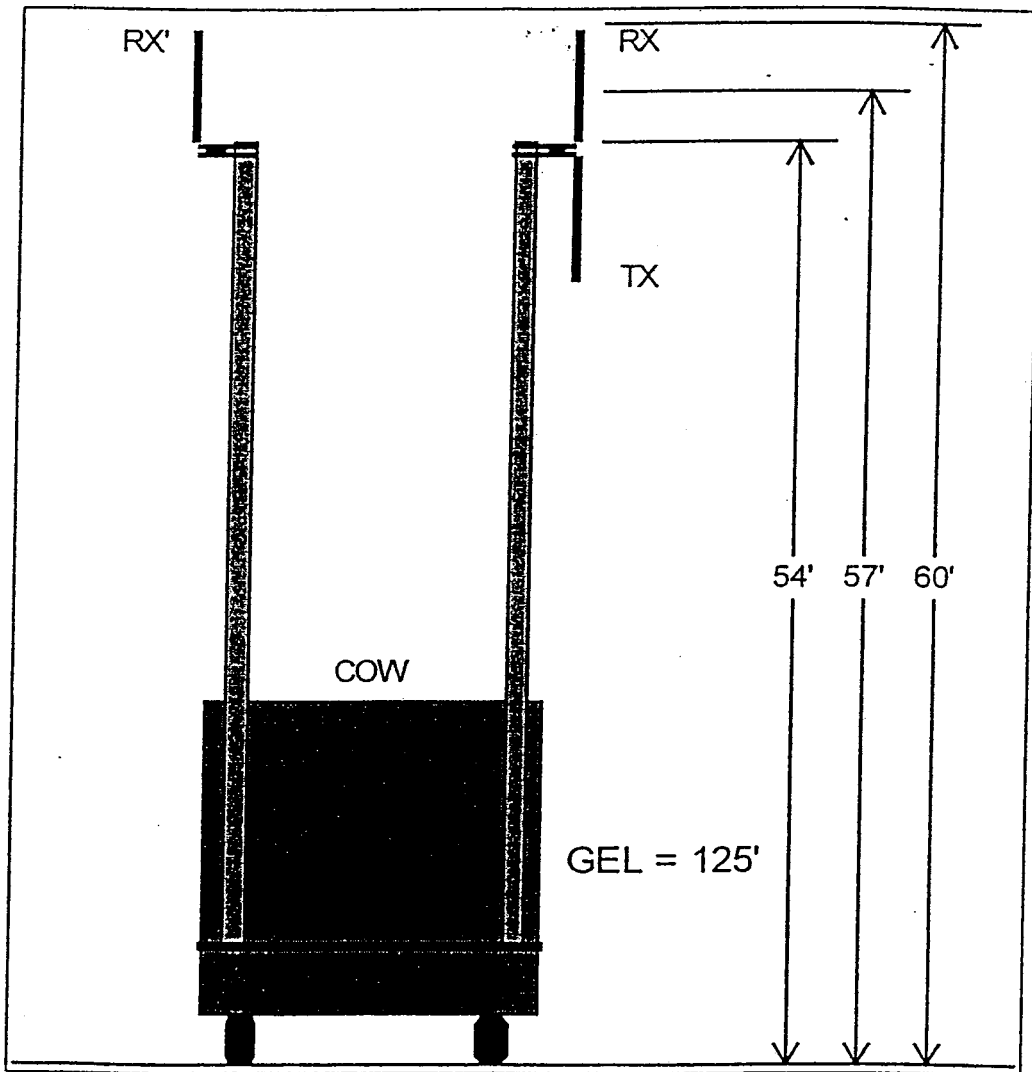
- ① POTS
- ① ZCOA Service

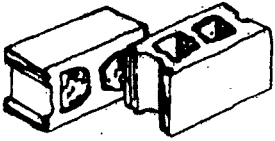
## TruckCOW



*COW's reduce site development costs by testing a site location before any construction begins. The following chart outlines the product characteristics for our TruckCOW. Contact FWT for available custom options.*

Moved By	Under its own power, 200 Hp Caterpillar diesel, 6-speed manual transmission
Support Structure	Production cab/chassis with custom designed support for pneumatic masts and combination work/storage platform over cab
Vehicle Ratings	Truck (25,950 lbs. GVWR). Does not require commercial driver's license
Approximate Weight	19,000 to 21,000 lbs *
Capacities/Payload	Payload 5,000 - 7,000 lbs *
Overall Exterior Size	30' Wide x 31' Long x 13'0" High
Setup Space Required	compound 15' x 35' 12' Wide (with stairs) x 31' Long
Shelter	All aluminum construction, studs, walls, rafters, and roof
Interior Size	One room - 7'4" x 17'2" x 8'; Two room - 7'4" x 13'6" x 8'; Generator/Utility Room - 7'4" x 3'
Insulation	Rigid foam, R-16 walls, R-16 ceiling
Flooring	Vinyl tile over plywood and steel frame
Wayside Entry	Six (6) 1.5" I.D. pvc sleeves to equipment room from mast
Door	3' x 7' insulated aluminum with J-point padlockable stainless steel hardware Optional 6' wide by 7' tall roll-up door on rear
Electrical	100 amp single phase
HVAC	Single 2-ton (24,000 Btu/h) units with thermostat mounted behind cab
Tower Height / Design	Two (2) design configurations available: • Two (2) telescoping 60' locking ring pneumatic masts with one compressor and two control valves, mounted behind cab with optional pan & tilt positioner for one mast • One (1) 60' and one (1) 30' telescoping locking ring pneumatic masts with one compressor and two control valves
Tower Design Windload	30' and 60' pneumatic masts 49 MPH per EIA-222
Tower / Loading Options	Pneumatic masts are for light duty loading (200 lbs and 14 square foot wind sail area) 3 omni whips DB810 or equal
Air Intake Power	Generator 7.5 to 20 KW diesel
Options	Truck: Automatic Transmission, 4-Wheel Drive
Weight varies with options and many more available	Miscellaneous: Cable Ladder, Telco Board, High/Low Temperature Alarm, Smoke Alarm, Door Alarm, Surge Electrical Upgrades, Manual Transfer Switch, Exterior Lights, Generators, Automatic Transfer Switch, Fire Aluminum Storage Boxes Mast: 100', 133' Pan & Tilt Controller





# *Cromwell Concrete Products, Inc.*

---

667 MAIN ST. • P.O. BOX 99 • CROMWELL, CT 06416  
(860) 529-3417 • (860) 635-5146  
FAX (860) 635-7469

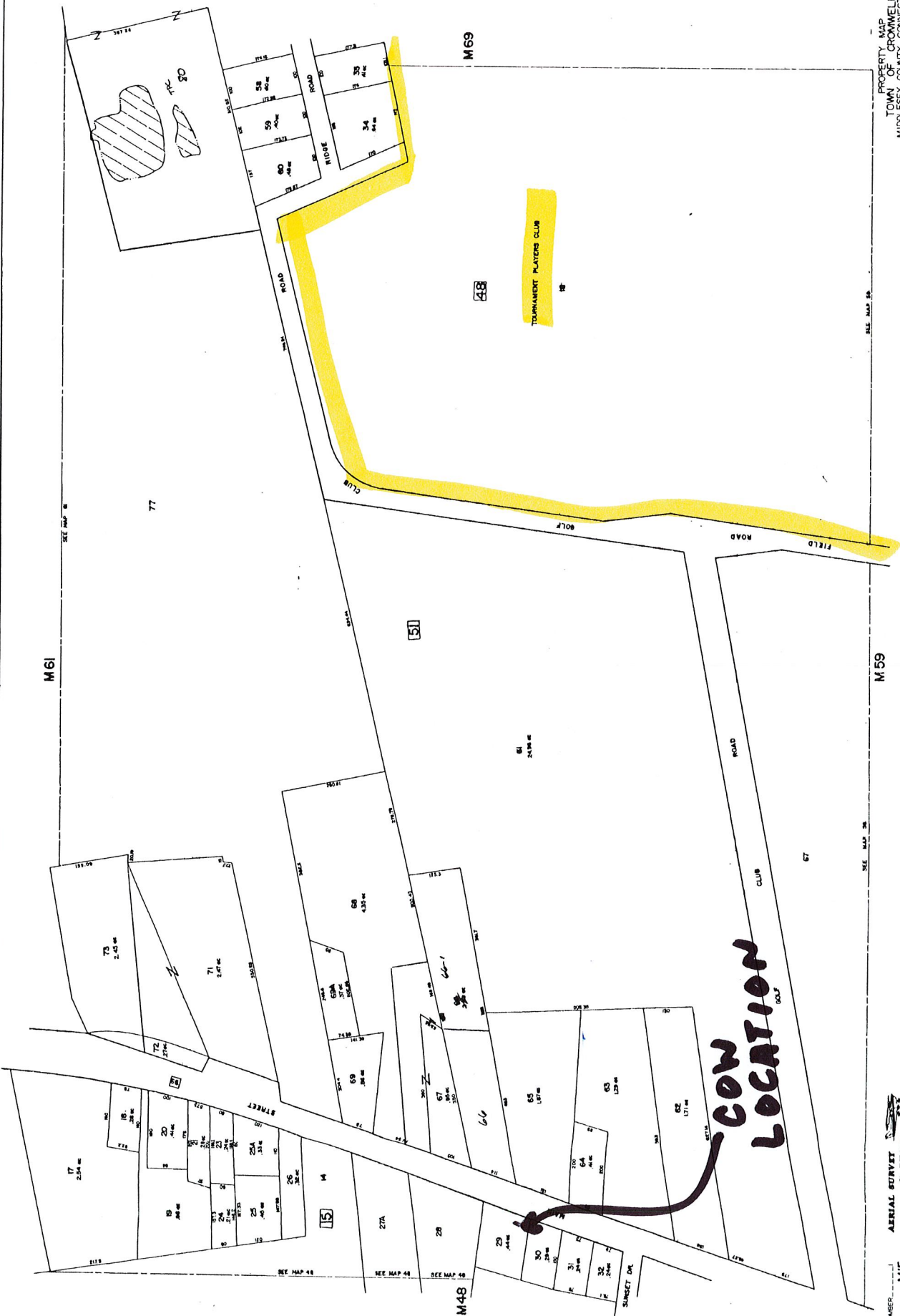
July 27, 2004  
Alex Tyurin  
Verizon Wireless  
99 East River Drive  
East Hartford, CT 06108

Dear Alex,

Let this letter serve as authorization for Verizon Wireless to occupy an 8'x20' parking space and erect a temporary cell tower at 667 Main Street, Cromwell, CT 06416 (a/k/a Cromwell Concrete Products, Inc.) during the period from Aug 18<sup>th</sup> to Aug 30<sup>th</sup>. I also certify that I agreed to the compensation in the amount of [REDACTED] from Verizon Wireless to occupy mentioned premises during that time.

Regards,

Lael Libera  
Owner



PROPERTY MAP  
TOWN OF CROMWELL  
MIDDLESEX COUNTY, CONNECTICUT

AERIAL SURVEY  
& PHOTO, 1987  
PL. 102 (11) - 1/8" = 100' (1:8000), 11" x 17"

DATE OF PHOTOGRAPHY 4-10-83

PARCEL NUMBER: M15  
ADJACENT MAP: M15  
BLOCK NUMBER: 3

**COW  
LOCATION  
ONLY**

TOURNAMENT PLAYERS CLUB

M69

48

51

M59

M48

M61

77

SEE MAP 18

SEE MAP 18

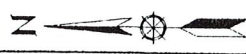
SEE MAP 28

SEE MAP 18

SEE MAP 48

SEE MAP 58

SUNSET DR



FINA VILLA 02/23/04  
067/Mini Support  
Cromwell 8/5/04

