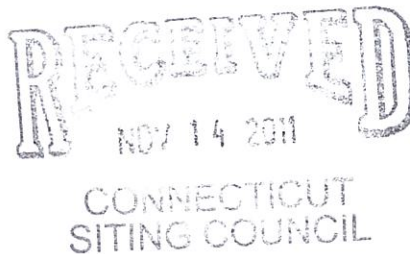


November 3, 2011

Chairman Robert Stein
Connecticut Siting Council
10 Franklin Square
New Britain, CT 06051



SUBJECT: Sprint Spectrum L.P.'s Notice of Intent to Make an Exempt Modification to an Existing Facility at 96 Powder Mill Road, Canton, CT 06019 (Site # CT33XC023)

Dear Chairman Stein:

Pursuant to R.C.S.A. Sections 16-50j-73 and 16-50j-72(b), Sprint Spectrum L.P. (Sprint) hereby gives notice to the Connecticut Siting Council (Council) and the Town of Canton of its intent to make an exempt modification to an existing telecommunications facility located at 96 Powder Mill Road, Canton, Connecticut.

Sprint plans to install a hydrogen fuel cell at its 96 Powder Mill Road facility to provide emergency backup power in the event of an electric outage. This planned installation does not constitute a modification subject to the Council's review as it falls within those activities provided for in R.C.S.A. Section 16-50j-72(b)(2). Specifically, this installation will not change the height of the existing tower, will not extend the boundaries of the existing compound, will not increase noise levels at the site by six decibels or more, and will not increase the total radio frequency electromagnetic radiation power density at the site to levels above applicable standards.

PROPOSED INSTALLATION

Sprint plans to install a 5 kW Alteryg hydrogen fuel cell generator within the existing fenced equipment compound. The fuel cell will be inside a cabinet measuring 3'6" x 2'2" x 6'0". There will also be a hydrogen cylinder storage cabinet with overall dimensions of 4'8" x 4'8" x 6'0".

Please contact me at 703.533.1006 or Hulshart@earthlink.net should you have any questions about this planned modification.

Sincerely,

A handwritten signature in blue ink, appearing to read "Mark Hulshart", with a long horizontal line extending to the right.

Mark Hulshart
Principal

cc: First Selectman Richard Barlow, Town of Canton
Properties One, LLC (property owner)

Specifications



Allergy Freedom Power™ 5 kW System installed in an FPS Power Cabinet		FPS-524-240	FPS-524-240-400	FPS-548-240	FPS-548-240-405
Physical	Dimensions (w x d x h)	26" x 42" x 72" [66 cm x 107 cm x 183 cm]			
	Weight	515 lb [234 kg]	706 lb [320 kg]	515 lb [234 kg]	706 lb [320 kg]
	Number of FPS Engines	1			
	Number of TPMs	0	1	0	1
Performance	Rated power	5 kW			
	Rated current	210 A		105 A	
	Operating voltage (nominal) ¹	24 VDC		48 VDC	
	Operating voltage (range) ¹	21 to 29 VDC		42 to 58 VDC	
	Standing Input Current (nominal)	1.92 A @ 24 VDC		0.96 A @ 48 VDC	
	Operation	Ambient temperature ²	- 4 °F to 104 °F [- 20 °C to +40 °C]		
Relative humidity, noncondensing		5 to 100%			
Location		Outdoor only			
Auxiliary AC in ²		120 V, 60 Hz, 10 A, single phase			
Storage	Ambient temperature	+ 40 °F to +113 °F [+4 °C to +45 °C]			
	Relative humidity, noncondensing	5 to 100%			
Fuel	Gaseous hydrogen purity	Hydrogen (H ₂) 99.95% certified Industrial Grade			
	Supply pressure range	40 to 150 PSIG [2.8 to 10.5 kg/cm ²]			
	Typical operating pressure	100 PSIG [7.03 kg/cm ²]			
	Consumption	300 g/hour @ 5 kW			
Monitoring / Control	Standard	Ethernet, USB, Serial, 4 Dry Contacts			
	Optional	Wireless Telemetry			
	Rectifier Supply Voltage	n/a	27.0 ± 0.6 VDC	n/a	54.0 ± 0.6 VDC

¹Polarity is determined by customer requirements and ground connections.

²For operation below +10 °C, the FPS must be connected to the grid and supplied with AC power until a grid failure, at which time the heat generated by the FPS will be sufficient to maintain operation of the FPS at temperatures between -20 °C and +10 °C.

Sprint



SITE NAME: CANTON/SBA

SITE NUMBER: CT33XC023

SITE ADDRESS: 96 POWDER MILL RD.
CANTON, CT 06019

SITE TYPE: EXISTING 151' MONOPOLE

Sprint

6580 SPRINT PARKWAY
OVERLAND PARK, KANSAS 66251

BLACK & VEATCH

10950 GRANDVIEW DRIVE
OVERLAND PARK, KANSAS 66210
(913) 458-2000

PROJECT NO: 168202

DRAWN BY: ASK

CHECKED BY: MB

SITE INFORMATION	AREA MAP	APPLICABLE CODES	DRAWING INDEX																						
<p><u>SITE ADDRESS:</u> 96 POWDER MILL RD CANTON, CT 06019</p> <p><u>PROPERTY OWNER:</u> SBA COMMUNICATIONS CORP. 5900 BROKEN SOUND PARKWAY NW BOCA RATON, FL 33487 800-487-SITE</p> <p>KENNETH HEIDORN 860-913-9761</p> <p><u>EQUIPMENT TYPE:</u> ALTERGY 5KW FUEL CELL</p> <p><u>EQUIPMENT SUPPLIER:</u> ALTERGY 140 BLUE RAVINE ROAD FOLSOM, CA 95630</p> <p>JERRY MEYERS 913-461-3674 jerry.meyers@altergy.com</p> <p><u>POWER COMPANY:</u> CONNECTICUT LIGHT AND POWER 860-947-2000 OR 800-286-2000</p> <p><u>TELCO COMPANY:</u> VERIZON</p> <p><u>COUNTY:</u> CANTON</p> <p><u>LATITUDE (NAD83):</u> 41° 50' 5.3262" N 41.834813</p> <p><u>LONGITUDE (NAD83):</u> -72° 55' 55.851" N -72.932181</p> <p><u>CONTACT ENGINEER:</u> BRYAN HANSEN WORK: 913-458-7343 E-MAIL: hansenbj@bv.com</p>		<p>ALL WORK SHALL COMPLY WITH THE FOLLOWING APPLICABLE CODES:</p> <p>2003 INTERNATIONAL BUILDING CODE 2005 WITH STATE OF CONNECTICUT AMENDMENTS</p> <p>2003 INTERNATIONAL MECHANICAL CODE 2005 WITH STATE OF CONNECTICUT AMENDMENTS</p> <p>2003 INTERNATIONAL PLUMBING CODE 2005 WITH STATE OF CONNECTICUT AMENDMENTS</p> <p>2005 NEC NATIONAL ELECTRICAL CODE 2005 WITH STATE OF CONNECTICUT AMENDMENTS</p> <p>IN THE EVENT OF CONFLICT, THE MOST RESTRICTIVE CODE SHALL PREVAIL</p>	<table><tbody><tr><td>T-1</td><td>TITLE SHEET & PROJECT DATA</td></tr><tr><td>C-1</td><td>OVERALL SITE PLAN</td></tr><tr><td>C-2</td><td>SITE PLAN</td></tr><tr><td>S-1</td><td>EQUIPMENT CABINET DETAILS</td></tr><tr><td>S-2</td><td>CONCRETE PAD DETAILS</td></tr><tr><td>M-1</td><td>HYDROGEN PIPING SCHEMATIC</td></tr><tr><td>E-1</td><td>ELECTRICAL ONE-LINE DIAGRAMS</td></tr><tr><td>E-2</td><td>OVERALL CONDUIT DETAILS</td></tr><tr><td>E-3</td><td>ELECTRICAL WIRING DIAGRAM</td></tr><tr><td>E-4</td><td>FUEL CELL INTERNAL WIRING DIAGRAM</td></tr><tr><td>G-1</td><td>GROUNDING PLAN AND DETAILS</td></tr></tbody></table>	T-1	TITLE SHEET & PROJECT DATA	C-1	OVERALL SITE PLAN	C-2	SITE PLAN	S-1	EQUIPMENT CABINET DETAILS	S-2	CONCRETE PAD DETAILS	M-1	HYDROGEN PIPING SCHEMATIC	E-1	ELECTRICAL ONE-LINE DIAGRAMS	E-2	OVERALL CONDUIT DETAILS	E-3	ELECTRICAL WIRING DIAGRAM	E-4	FUEL CELL INTERNAL WIRING DIAGRAM	G-1	GROUNDING PLAN AND DETAILS
T-1	TITLE SHEET & PROJECT DATA																								
C-1	OVERALL SITE PLAN																								
C-2	SITE PLAN																								
S-1	EQUIPMENT CABINET DETAILS																								
S-2	CONCRETE PAD DETAILS																								
M-1	HYDROGEN PIPING SCHEMATIC																								
E-1	ELECTRICAL ONE-LINE DIAGRAMS																								
E-2	OVERALL CONDUIT DETAILS																								
E-3	ELECTRICAL WIRING DIAGRAM																								
E-4	FUEL CELL INTERNAL WIRING DIAGRAM																								
G-1	GROUNDING PLAN AND DETAILS																								
		<p>PROJECT DESCRIPTION</p> <p>INSTALL POWER BACK UP EQUIPMENT TO EXISTING SITE WITHIN EXISTING COMPOUND. INSTALL (1) NEW FUEL CELL WITH (1) FUEL STORAGE CABINET ON CONCRETE PAD AND CONNECT TO THE SITE'S DC POWER PLANT BUS.</p>																							
		<p>APPROVALS</p> <p>THE FOLLOWING PARTIES HEREBY APPROVE AND ACCEPT THESE DOCUMENTS & AUTHORIZE THE SUBCONTRACTOR TO PROCEED WITH THE CONSTRUCTION DESCRIBED HEREIN. ALL DOCUMENTS ARE SUBJECT TO REVIEW BY THE LOCAL BUILDING DEPARTMENT & MAY IMPOSE CHANGES OR MODIFICATIONS.</p> <p>ERICSSON: _____ DATE: _____</p> <p>BLACK & VEATCH: _____ DATE: _____</p> <p>COMMENTS: _____</p>	<p>ENGINEER OF RECORD</p> <p>CHRISTOPHER ALAN KRAFFT PE # 080438</p> <p>BLACK & VEATCH CORPORATION</p>																						
		<p>DRIVING DIRECTIONS FROM NEAREST AIRPORT</p> <p>RENTSCHLER FIELD AIRPORT: DEPART ON MAIN ST HEADING NORTH-WEST FOR 0.2 MILES, TURN LEFT (WEST) ONTO WILLOW ST EXT FOR 0.1 MILE. TAKE RAMP ONTO SR-2 FOR 1.2 MILES TOWARDS CT-2/HARTFORD. AT EXIT 2W, TAKE RAMP RIGHT ONTO I-84 [US-6] FOR 0.8 MILES TOWARDS I-84/I-91. AT EXIT 50, TURN OFF ONTO RAMP FOR 0.2 MILES TOWARDS US-44/I-91 S MAIN ST. KEEP STRAIGHT ONTO US-44 [MORGAN ST] FOR 9.4 MILES TOWARDS I-84/US-44 AND KEEP STRAIGHT ONTO US-202 [US-44] FOR 5.6 MILES. BEAR RIGHT (NORTH-WEST) ONTO POWDER MILL RD FOR 131 YDS AND ARRIVE AT 96 POWDER MILL RD, CANTON, CT 06019.</p>																							

STATE OF CONNECTICUT
CHRISTOPHER ALAN KRAFFT
0027383
LICENSED PROFESSIONAL ENGINEER

IT IS A VIOLATION OF LAW FOR ANY PERSON, UNLESS THEY ARE ACTING UNDER THE DIRECTION OF A LICENSED PROFESSIONAL ENGINEER, TO ALTER THIS DOCUMENT.

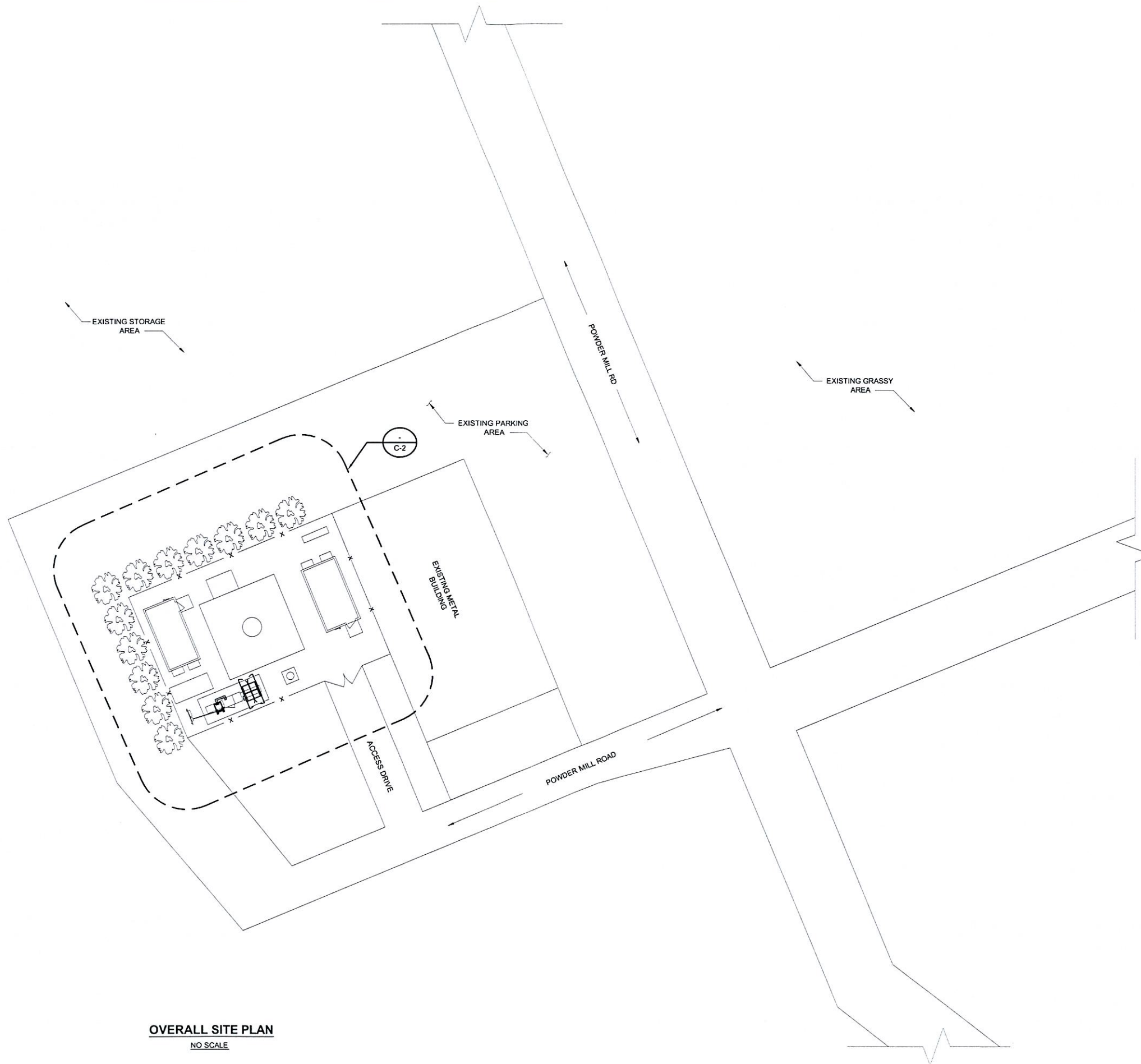
CANTON/SBA
CT33XC023
96 POWDER MILL RD
CANTON, CT 06019
CO-LOCATION

SHEET TITLE

TITLE SHEET & PROJECT DATA

SHEET NUMBER

T-1



OVERALL SITE PLAN
NO SCALE

Sprint

6580 SPRINT PARKWAY
OVERLAND PARK, KANSAS 66251

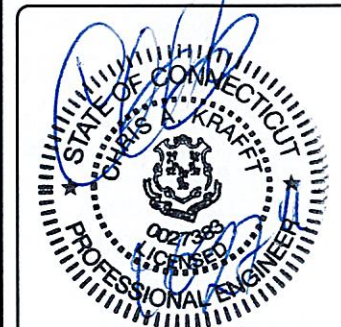


BLACK & VEATCH

10950 GRANDVIEW DRIVE
OVERLAND PARK, KANSAS 66210
(913) 458-2000

PROJECT NO: 168202
DRAWN BY: ASK
CHECKED BY: MB

0	10/26/11	ISSUED FOR CONSTRUCTION
REV	DATE	DESCRIPTION



IT IS A VIOLATION OF LAW FOR ANY PERSON,
UNLESS THEY ARE ACTING UNDER THE
DIRECTION OF A LICENSED PROFESSIONAL
ENGINEER, TO ALTER THIS DOCUMENT.

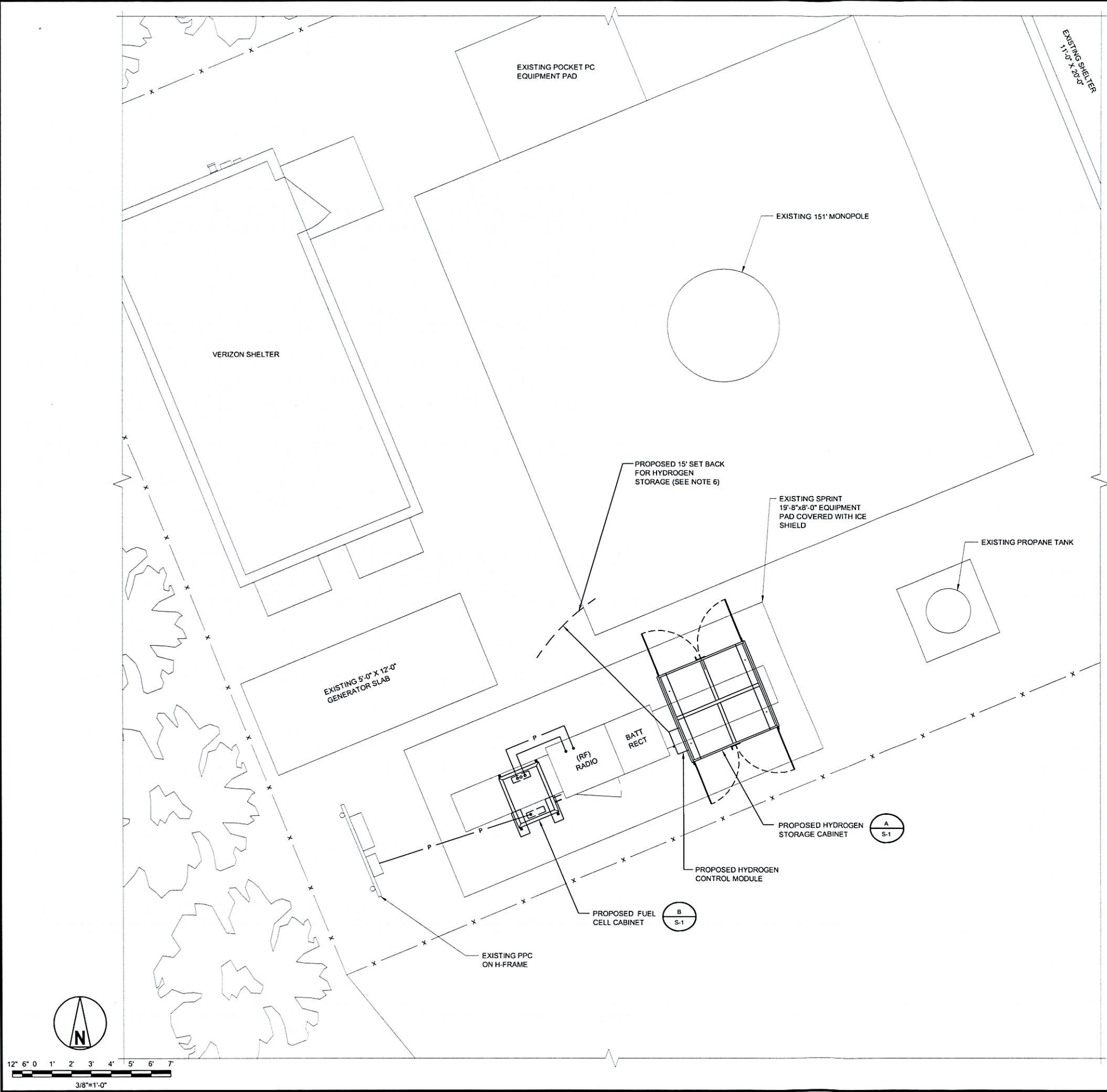
CANTON/SBA
CT33XC023
96 POWDER MILL RD.
CANTON, CT 06019
CO-LOCATION

SHEET TITLE

OVERALL
SITE PLAN

SHEET NUMBER

C-1



GENERAL NOTES:

1. CONTRACTOR SHALL GROUND ALL NEW EQUIPMENT TO THE NEAREST GROUND RING (SEE G-1).
2. CONTRACTOR SHALL ROUTE CONDUIT TO AVOID TRIP HAZARDS BY EITHER UTILIZING EXISTING CABLE TRAY, OVERHEAD ICE BRIDGE, UNDERNEATH RAISED PLATFORM, OR AROUND EDGE OF CONCRETE PAD.
3. CONTRACTOR SHALL FOLLOW ALL MANUFACTURER'S RECOMMENDATIONS FOR INSTALLATION OF ALL NEW EQUIPMENT.
4. CONTRACTOR SHALL VERIFY THE ALARM CABLES ARE OF SUFFICIENT LENGTH.
5. EXCESS CABLES SHALL BE LACED IN A NEAT AND ORGANIZED MANNER.
6. HYDROGEN STORAGE CABINET HAS A REQUIRED SET BACK OF 15' FROM IGNITION SOURCES & AIR INTAKES.



6580 SPRINT PARKWAY
OVERLAND PARK, KANSAS 66251



BLACK & VEATCH

10950 GRANDVIEW DRIVE
OVERLAND PARK, KANSAS 66210
(913) 458-2000

PROJECT NO:	168202
DRAWN BY:	ASK
CHECKED BY:	MB

0	10/26/11	ISSUED FOR CONSTRUCTION
REV	DATE	DESCRIPTION

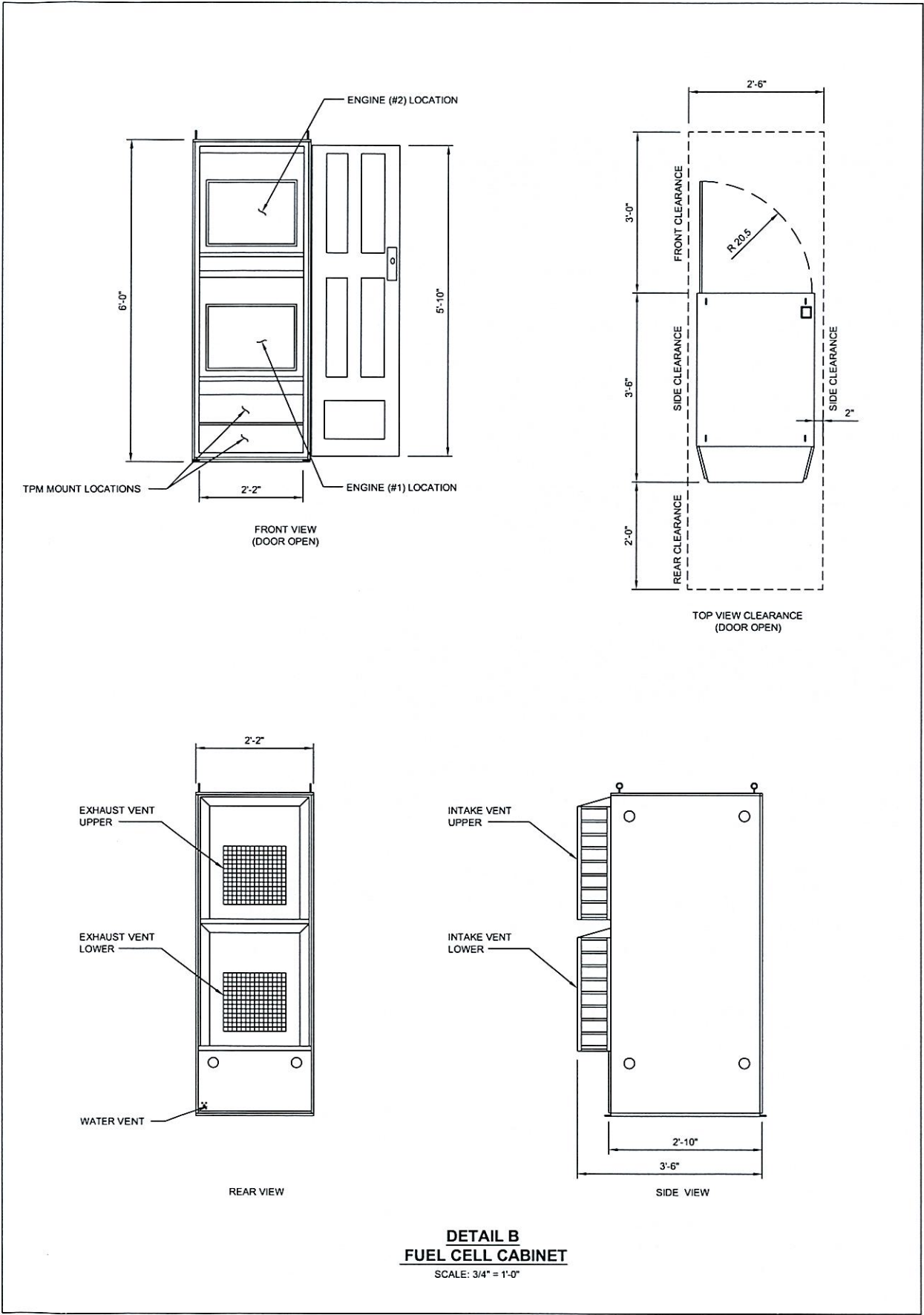
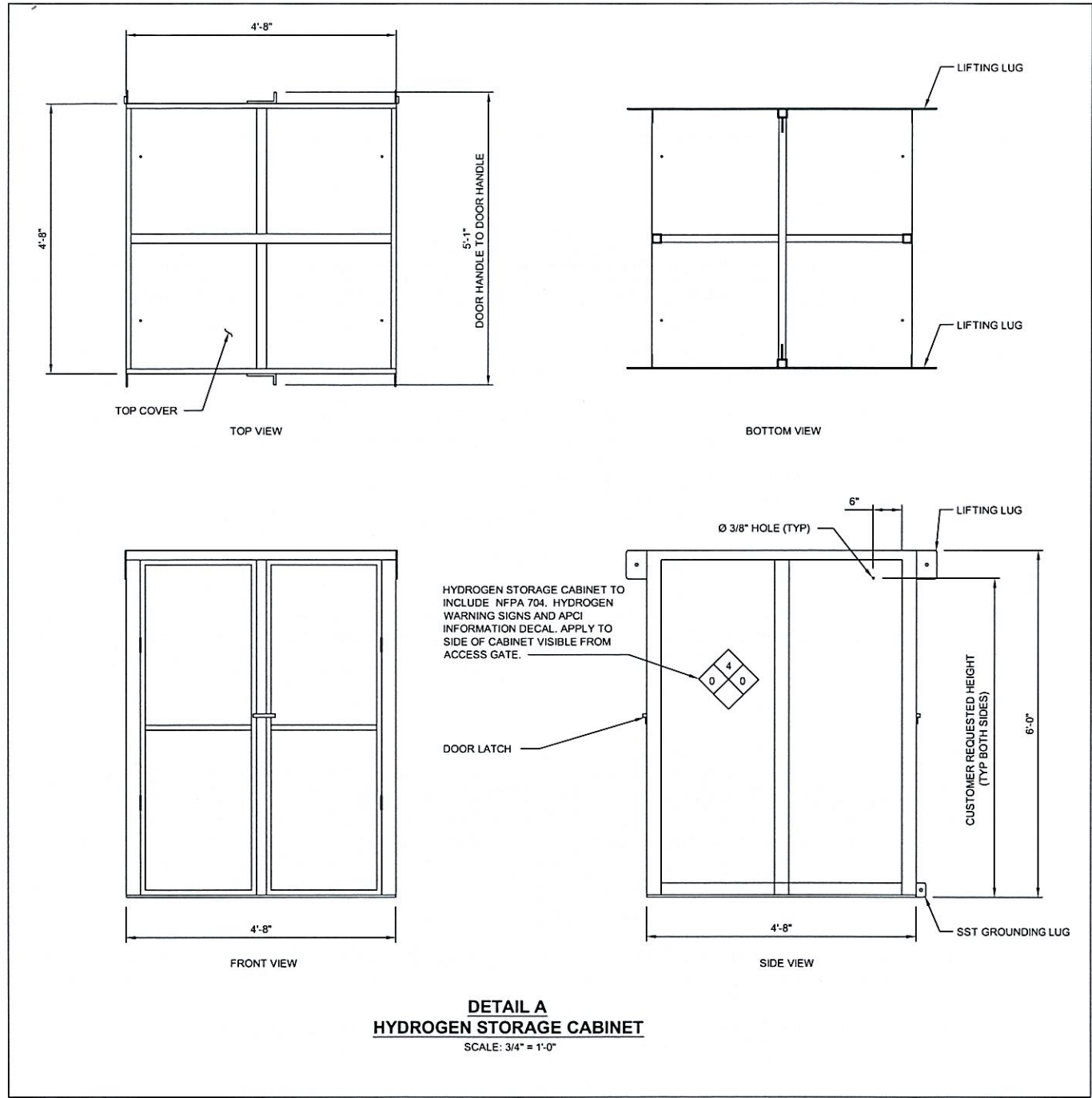


IT IS A VIOLATION OF LAW FOR ANY PERSON, UNLESS THEY ARE ACTING UNDER THE DIRECTION OF A LICENSED PROFESSIONAL ENGINEER, TO ALTER THIS DOCUMENT.

CANTON/SBA
CT33XC023
96 POWDER MILL RD.
CANTON, CT 06019
CO-LOCATION

SHEET TITLE
SITE PLAN

SHEET NUMBER
C-2



6580 SPRINT PARKWAY
OVERLAND PARK, KANSAS 66251



BLACK & VEATCH

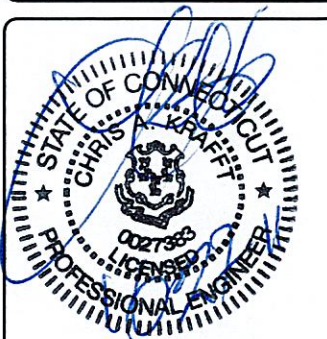
10950 GRANDVIEW DRIVE
OVERLAND PARK, KANSAS 66210
(913) 458-2000

PROJECT NO: 168202

DRAWN BY: ASK

CHECKED BY: MB

0	10/26/11	ISSUED FOR CONSTRUCTION
REV	DATE	DESCRIPTION



IT IS A VIOLATION OF LAW FOR ANY PERSON,
UNLESS THEY ARE ACTING UNDER THE
DIRECTION OF A LICENSED PROFESSIONAL
ENGINEER, TO ALTER THIS DOCUMENT.

CANTON/SBA
CT33XC023
96 POWDER MILL RD.
CANTON, CT 06019
CO-LOCATION

SHEET TITLE
**EQUIPMENT CABINET
DETAILS**

SHEET NUMBER

S-1