

# STATE OF CONNECTICUT

## CONNECTICUT SITING COUNCIL

Ten Franklin Square, New Britain, CT 06051

Phone: (860) 827-2935 Fax: (860) 827-2950

E-Mail: [siting.council@po.state.ct.us](mailto:siting.council@po.state.ct.us)

Web Site: [www.state.ct.us/csc/index.htm](http://www.state.ct.us/csc/index.htm)

May 10, 2002

Julie M. Donaldson, Esq.  
Hurwitz & Sagarin LLC  
147 North Broad Street  
P.O. Box 112  
Milford, CT 06460-0112

RE: **EM-SBA-023-020418** - SBA Towers, Inc. notice of intent to modify an existing telecommunications facility located at 540 Cherry Brook Road, Canton, Connecticut.

Dear Attorney Donaldson:

At a public meeting held on May 7, 2002, the Connecticut Siting Council (Council) acknowledged your notice to modify this existing telecommunications facility, pursuant to Section 16-50j-73 of the Regulations of Connecticut State Agencies.

The proposed modifications are to be implemented as specified here and in your notice dated April 18, 2002. The modifications are in compliance with the exception criteria in Section 16-50j-72 (b) of the Regulations of Connecticut State Agencies as changes to an existing facility site that would not increase tower height, extend the boundaries of the tower site, increase noise levels at the tower site boundary by six decibels, and increase the total radio frequencies electromagnetic radiation power density measured at the tower site boundary to or above the standard adopted by the State Department of Environmental Protection pursuant to General Statutes § 22a-162. This facility has also been carefully modeled to ensure that radio frequency emissions are conservatively below State and federal standards applicable to the frequencies now used on this tower.

This decision is under the exclusive jurisdiction of the Council. Any additional change to this facility will require explicit notice to this agency pursuant to Regulations of Connecticut State Agencies Section 16-50j-73. Such notice shall include all relevant information regarding the proposed change with cumulative worst-case modeling of radio frequency exposure at the closest point of uncontrolled access to the tower base, consistent with Federal Communications Commission, Office of Engineering and Technology, Bulletin 65. Any deviation from this format may result in the Council implementing enforcement proceedings pursuant to General Statutes § 16-50u including, without limitation, imposition of expenses resulting from such failure and of civil penalties in an amount not less than one thousand dollars per day for each day of construction or operation in material violation.

Thank you for your attention and cooperation.

Very truly yours,

Mortimer A. Gelston

Chairman

MAG/DM/laf

c: Honorable Mary B. Tomolonius, First Selectman, Town of Canton  
Frederick E. Turkington, Jr., Chief Administrative Officer, Town of Canton  
Eric Barz, Town Planner, Town of Canton  
Sandy M. Carter, Verizon Wireless



# STATE OF CONNECTICUT

## CONNECTICUT SITING COUNCIL

Ten Franklin Square, New Britain, CT 06051

Phone: (860) 827-2935 Fax: (860) 827-2950

E-Mail: [siting.council@po.state.ct.us](mailto:siting.council@po.state.ct.us)

Web Site: [www.state.ct.us/csc/index.htm](http://www.state.ct.us/csc/index.htm)

April 25, 2002

Honorable Mary B. Tomolonius  
First Selectman  
Town of Canton  
4 Market Street  
P. O. Box 168  
Collinsville, CT 06022-0168

RE: **EM-SBA-023-020418** – SBA Towers, Inc. notice of intent to modify an existing telecommunications facility located at 540 Cherry Brook Road, Canton, Connecticut.

Dear Ms. Tomolonius:

The Connecticut Siting Council (Council) received this request to modify an existing telecommunications facility, pursuant to Regulations of Connecticut State Agencies Section 16-50j-72.

The Council will consider this item at the next meeting scheduled for May 7, 2002, at 1:30 p.m. in Hearing Room One, Ten Franklin Square, New Britain, Connecticut.

Please call me or inform the Council if you have any questions or comments regarding this proposal.

Thank you for your cooperation and consideration.

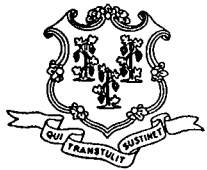
Very truly yours,

S. Derek Phelps  
Executive Director

SDP/esc

Enclosure: Notice of Intent

c: Eric Barz, Town Planner, Town of Canton  
Frederick E. Turkington, Jr., Chief Administrative Officer, Town of Canton



# STATE OF CONNECTICUT

## CONNECTICUT SITING COUNCIL

Ten Franklin Square, New Britain, CT 06051

Phone: (860) 827-2935 Fax: (860) 827-2950

E-Mail: [siting.council@po.state.ct.us](mailto:siting.council@po.state.ct.us)

Web Site: [www.state.ct.us/csc/index.htm](http://www.state.ct.us/csc/index.htm)

April 24, 2002

### *Via Facsimile*

Ms. Julie Donaldson, Esq.  
Hurwitz & Sagarin  
147 North Broad Street  
P.O. Box 112  
Milford, CT 06460-0112

RE: Notice of Exempt Modification for Existing Telecommunications Tower at 540  
Cherry Brook, Canton and 267 Norwich-Westerly Road, North Stonington  
Connecticut


Dear Atty. Donaldson:

For the North Stonington filing, please provide the latitude and longitude coordinates for the existing tower.

For the Canton filing, the structural analysis of the existing monopole states that the Town Fire Department has two whip antennas at 150 feet AGL and one yagi antenna at 90 feet AGL. However, the radio frequency report calculates all town antennas as being at 150 feet AGL. Please provide information resolving this discrepancy.

Should you have any questions on these requests, feel free to call me at the above number. Thank you for your assistance in this matter.

Sincerely,

  
David Martin  
Siting Analyst I

# HURWITZ & SAGARIN LLC

April 18, 2002

S. Derek Phelps  
Executive Director  
Connecticut Siting Council  
10 Franklin Square  
New Britain, Connecticut 06051

RECEIVED

APR 18 2002

CONNECTICUT  
SITING COUNCIL

Re: **Notice of Exempt Modification**  
**SBA Telecommunications Facility**  
**540 Cherry Brook Road**  
**Canton, Connecticut**

Dear Mr. Phelps:

SBA Towers, Inc. ("SBA") hereby requests acknowledgment that the proposed co-location of AT&T Wireless PCS, LLC d/b/a AT&T Wireless ("AT&T Wireless") on a telecommunications tower owned by SBA and located at 540 Cherry Brook Road, Canton, Connecticut ("Cherry Brook Road Facility") constitutes an exempt modification pursuant to the Public Utility Environmental Standards Act, Connecticut General Statutes Section 16-50g et. seq. ("PUESA") and Section 16-50j-72(b) of the Regulations of Connecticut State Agencies ("R.C.S.A.") adopted pursuant to PUESA. In accordance with R.C.S.A. Section 16-50j-73, a copy of this letter has been sent to Mary B. Tomolonius, First Selectwoman, Canton.

SBA and AT&T Wireless have agreed to the shared use of the Cherry Brook Road Facility, as detailed below.

## **The Cherry Brook Road Facility**

The Cherry Brook Road Facility consists of a 150 foot monopole within a site compound which is surrounded by a chain link fence. The facility can support the antenna arrays and related equipment of several carriers including Verizon which was approved by the Siting Council on March 20, 2001. (TS-VER-023-010216-1)

## **AT&T Wireless' Facility**

AT&T Wireless will install 6 panel antennas at an antenna centerline height of approximately 140 feet. A structural integrity report, attached as Exhibit A, was generated by Chazen Engineering and Land Surveying Co. P.C. and confirms that the tower is structurally capable of supporting AT&T Wireless' proposed antennas. AT&T Wireless will also install associated equipment cabinets (2 proposed, 2 future, each 76"H x 30"W x 30"D) on a concrete pad within the existing fenced compound.

## AT&T Wireless' Facility Constitutes An Exempt Modification

For the following reasons, the proposed modifications to the Cherry Brook Road Facility meet the exempt modification criteria set forth in R.C.S.A. Section 16-50j-72(b)(2):

1. As evidenced by the attached Tower Elevation Drawing (Exhibit B), the proposed modification will not increase the height of the tower as AT&T Wireless' antennas will be installed at a center line height of approximately 140 feet.
2. As evidenced by the attached Site Plan Drawing (Exhibit B), the installation of AT&T Wireless' equipment within the existing fenced compound will not require an extension of the site boundaries.
3. The proposed modifications will not increase the noise levels at the existing facility by six decibels or more.
4. As set forth in the Emissions Report prepared by C Squared Systems, LLC, attached as Exhibit C, the operation of the additional antennas will not increase the total radio frequency (RF) power density, measured at the site boundary, to a level at or above the standard adopted by the Connecticut Department of Environmental Protection as set forth in Section 22a-162 of the Connecticut General Statutes and MPE limits established by the Federal Communications Commission. The "worst-case" percentage for RF Power density for a point at the tower base is calculated to be 3.76% for AT&T Wireless' antennas. Based upon a previous filing by Verizon, the calculated "worst case" cumulative RF power density at the site is only 9.8% of the standard for general population/uncontrolled exposure.

For the foregoing reasons, SBA respectfully submits that the proposed addition of AT&T Wireless' antenna and equipment at the Cherry Brook Road Facility constitutes an exempt modification under R.C.S.A. Section 16-50j-72(b)(2)

Very truly yours,

  
Julie M. Donaldson

cc: Mary B. Tomolonius, First Selectwoman, Town of Canton  
Harold Hewett, Bechtel (CT-907-007-853)  
Mark Roberts, SBA  
Christopher Fisher Esq., Cuddy & Feder & Worby

# CHAZEN ENGINEERING & LAND SURVEYING Co., P.C.

*Dutchess County Office*  
Phone: (845) 454-3980

*New England Office*  
Phone: (781) 556-1037

*20 Gurley Avenue, Troy, New York 12182*  
*Phone: (518) 235-8050 Fax: (518) 235-8051*  
*Email: albany@chazencompanies.com*

*Orange County Office*  
Phone: (845) 567-1133

*North Country Office*  
Phone: (518) 812-0513

April 5, 2002

Mr. Randy Freschlin  
SBA Network Services, Inc.  
80 Eastern Boulevard  
Glastonbury, CT 06033

*Re: Structural Review of the Canton 2 Monopole*  
*TCC Job Number: NE030.00*  
*SBA Site No.: 4275-011*  
*AWS Site No.: CT907-007-853*

Dear Mr. Freschlin:

As requested, The Chazen Companies (TCC) has performed a structural review of the above referenced monopole located in the Town of Canton, Hartford County, Connecticut. Our review is based on information provided by SBA and design drawings by Fred A. Nudd Corporation, dated November 2000.

Based on our review, the monopole is 150 feet tall and was designed to support six (6) antenna arrays consisting of (12) DB896 Panel antennas at elevations of 150 feet, 140 feet, 130 feet, 120 feet, 110 feet, and 100 feet above ground level (AGL). Additionally, the monopole was also designed to support two (2) DB220 whip antennas at an elevation of 150 feet AGL.

Currently there are two whip antennas at 150 feet AGL and a yagi antenna at 90 feet AGL for the Town of Canton Fire Department installed on the monopole and a planned installation of twelve (12) Decibel DB844H80 panel antennas at 150 feet AGL by Verizon Wireless. AT&T Wireless proposes to install six (6) Allgon 7250 panel antennas at an elevation of 140 AGL.

The design drawings provided indicate that the monopole was designed for a basic wind speed of 80 mph and ½" radial ice with wind/ice reduction in accordance with ANSI/TIA/EIA-222-F *Structural Standards for Steel Antenna Towers and Antenna Supporting Structures*. Revision F of this standard is the newest revision,

and thus meets or exceeds the requirements of the previous revision, which is referenced in the 1996 BOCA National Building Code. The Connecticut State Building Code requires that television and radio towers be designed in accordance with Section 3108.4 of the 1996 BOCA National Building Code. Therefore TCC can conclude that the monopole design meets or exceeds the Connecticut State Building Code.

Based upon this information, TCC has determined that the existing monopole and its foundation are capable of supporting the existing, planned, and proposed antennas, provided the monopole and foundation were constructed in accordance with all applicable local, state, and federal codes.

If you have any questions, or require any additional information please do not hesitate to contact this office.

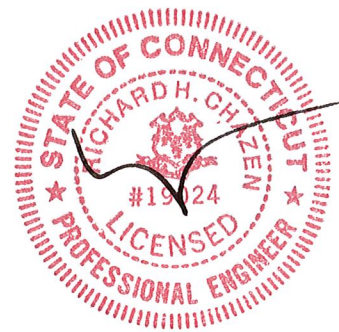
Sincerely,

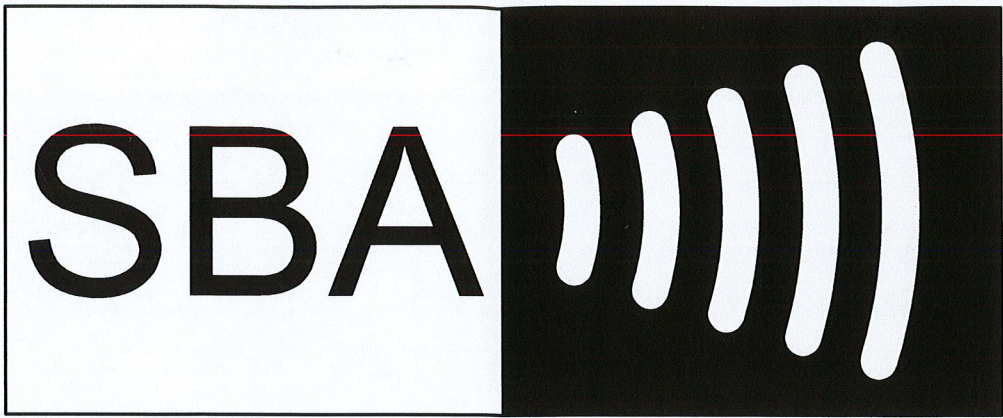


Richard Chazen, P.E.  
Principal

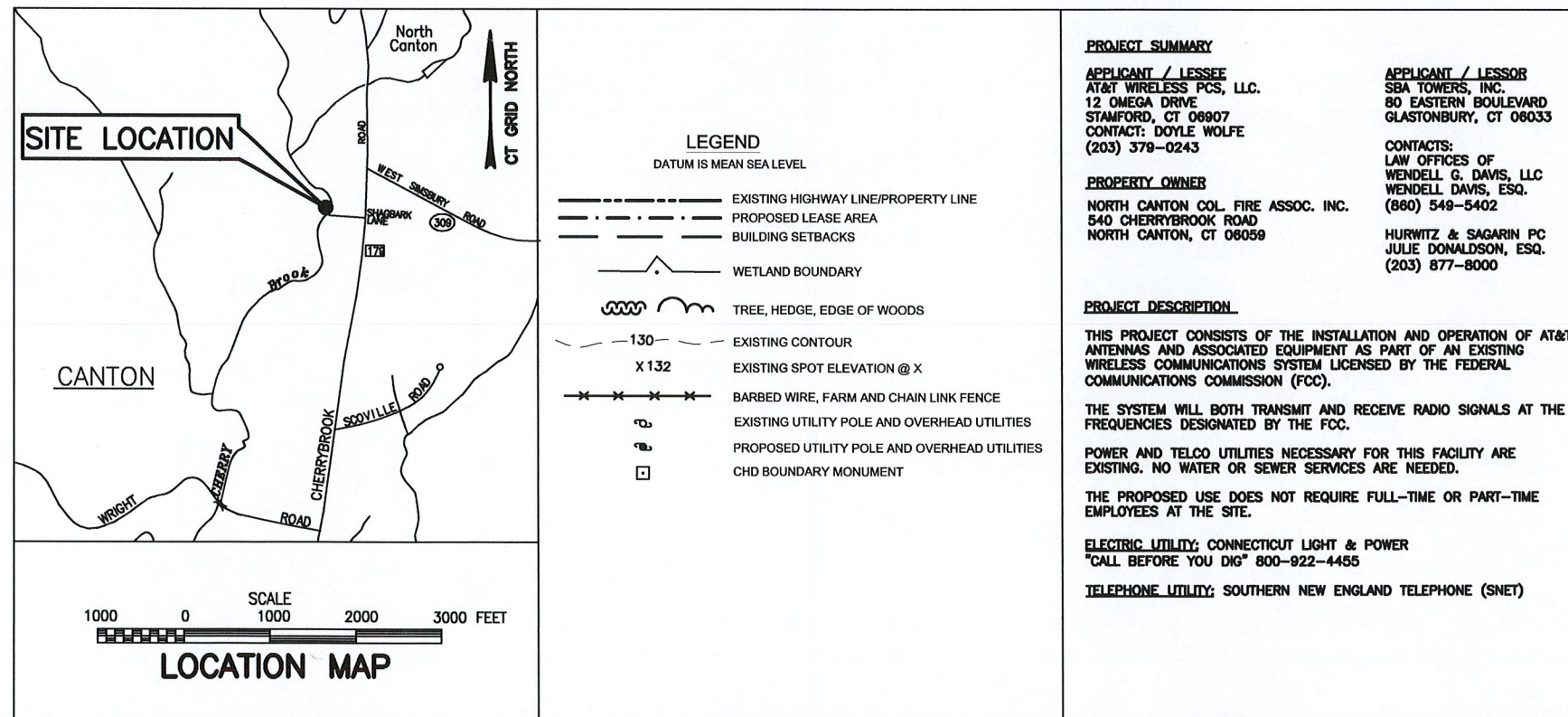
ksp/

cc: Kelly Libolt, TCC  
Kelly Phillips, TCC  
File





907-007-853 / CANTON 2 CT  
 540 CHERRY BROOK ROAD  
 CANTON, CONNECTICUT 06019



**PROJECT SUMMARY**

**APPLICANT / LESSEE**  
 AT&T WIRELESS PCS, LLC.  
 12 OMEGA DRIVE  
 STAMFORD, CT 06907  
 CONTACT: DOYLE WOLFE  
 (203) 379-0243

**APPLICANT / LESSOR**  
 SBA TOWERS, INC.  
 80 EASTERN BOULEVARD  
 GLASTONBURY, CT 06033

**CONTACTS:**  
 LAW OFFICES OF  
 WENDELL G. DAVIS, LLC  
 WENDELL DAVIS, ESQ.  
 (860) 549-5402

**HURWITZ & SAGARIN PC**  
 JULIE DONALDSON, ESQ.  
 (203) 877-8000

**PROPERTY OWNER**

NORTH CANTON COL. FIRE ASSOC. INC.  
 540 CHERRYBROOK ROAD  
 NORTH CANTON, CT 06059

**PROJECT DESCRIPTION**

THIS PROJECT CONSISTS OF THE INSTALLATION AND OPERATION OF AT&T ANTENNAS AND ASSOCIATED EQUIPMENT AS PART OF AN EXISTING WIRELESS COMMUNICATIONS SYSTEM LICENSED BY THE FEDERAL COMMUNICATIONS COMMISSION (FCC).

THE SYSTEM WILL BOTH TRANSMIT AND RECEIVE RADIO SIGNALS AT THE FREQUENCIES DESIGNATED BY THE FCC.

POWER AND TELCO UTILITIES NECESSARY FOR THIS FACILITY ARE EXISTING. NO WATER OR SEWER SERVICES ARE NEEDED.

THE PROPOSED USE DOES NOT REQUIRE FULL-TIME OR PART-TIME EMPLOYEES AT THE SITE.

**ELECTRIC UTILITY:** CONNECTICUT LIGHT & POWER  
 "CALL BEFORE YOU DIG" 800-922-4455

**TELEPHONE UTILITY:** SOUTHERN NEW ENGLAND TELEPHONE (SNET)



DRAWING INDEX	
DRAWING	TITLE
T1	COVER SHEET
Z1	LAYOUT PLAN AND ELEVATION

By: MJS  
 Xref: BORD.dwg  
 Plot: WCHRSTOPHE Layer: State:  
 I:\projects\3136\08\Shing Council\843701.dwg  
 Thu, Apr 18, 2003 - 1:17:14pm

**Goodkind & O'Dea, Inc.**  
 A Dewberry Company  
 59 Elm Street, Suite 101  
 New Haven, CT 06510  
 p. (203) 776-2277  
 f. (203) 776-2288

Engineers  
 Planners  
 Surveyors

**CANTON 2 CT**  
 540 CHERRY BROOK ROAD  
 CANTON, CONNECTICUT 06019

**SBA TOWERS, INC.**

80 EASTERN BOULEVARD  
 GLASTONBURY, CONNECTICUT  
 (860) 659-9101  
 MARK ROBERTS

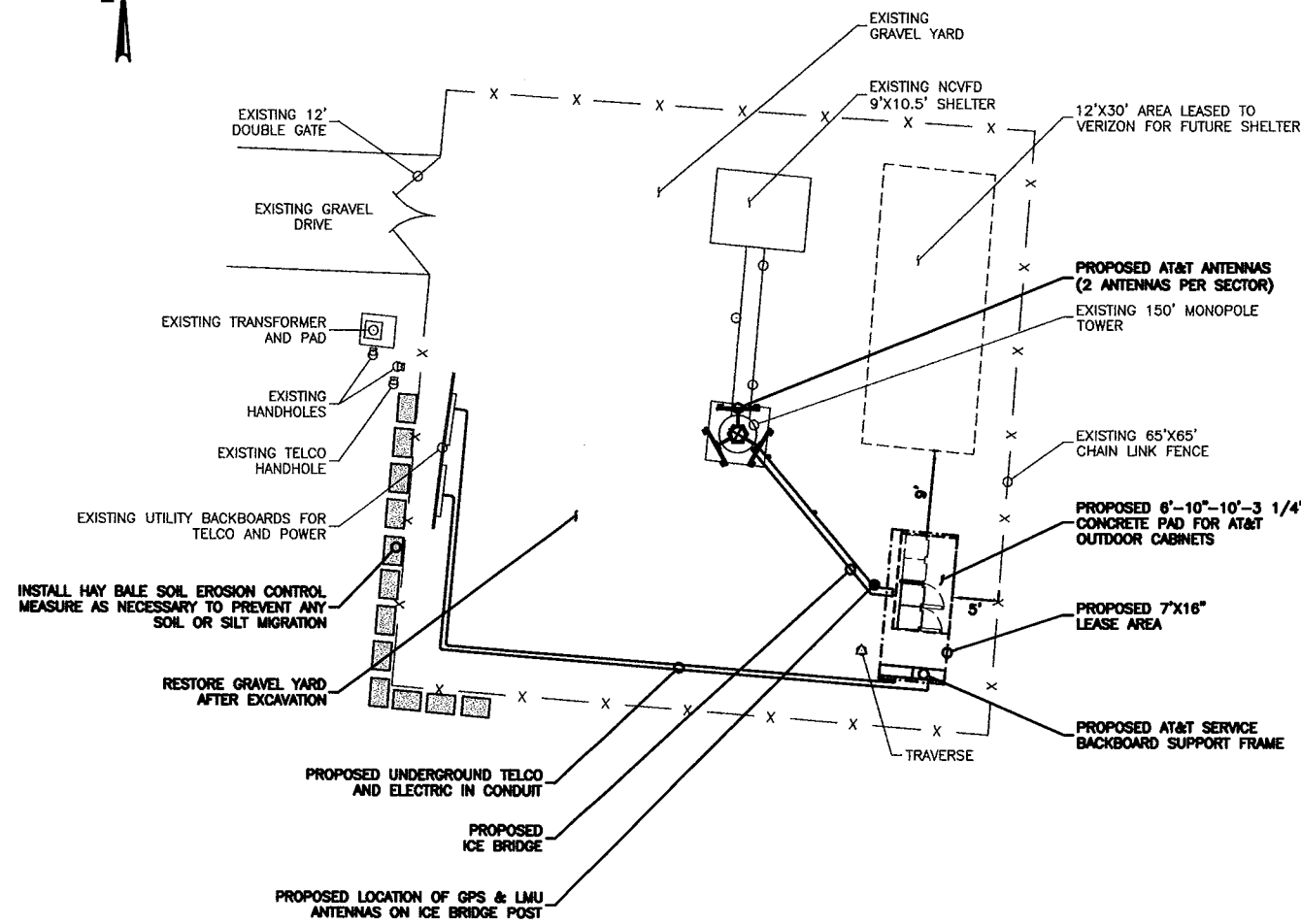
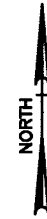
ONE TOWN CENTER RD, 3RD FL.  
 BOCA RATON, FL 33486  
 (561) 995-7670

NO.	DATE	REVISIONS	BY	CHK	APP'D
SCALE AS NOTED			DESIGNED	JSG	DRAWN
				MJS	

SITE NUMBER 907-007-853  
 CANTON 2 CT  
 COVER SHEET

DRAWING NUMBER	REV
CT-853T1	0

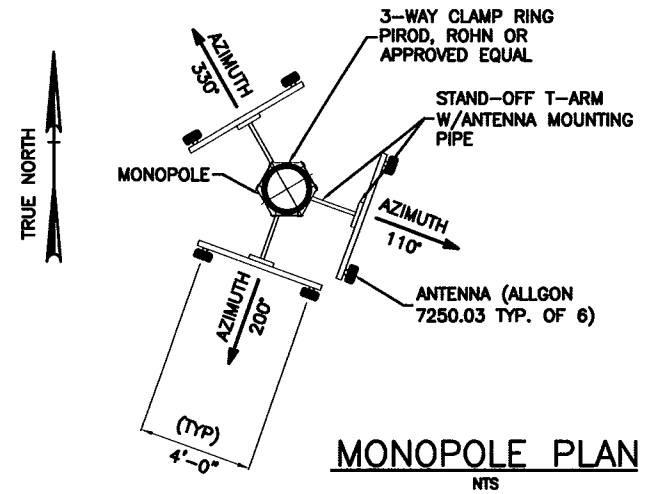




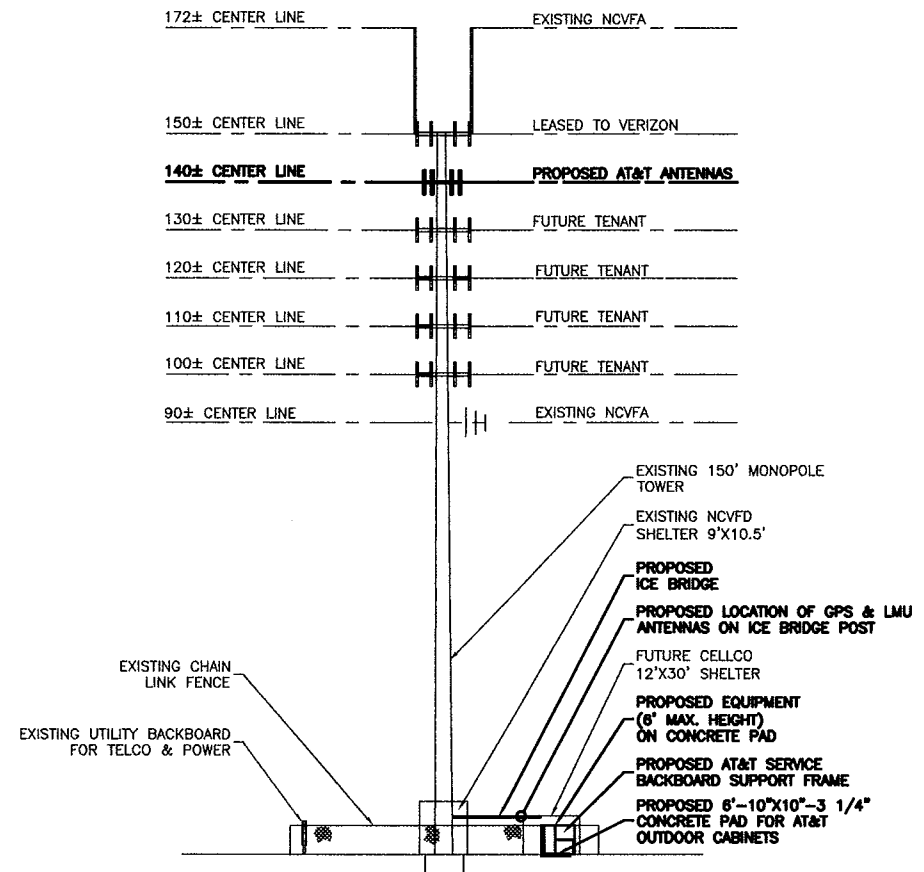
**EQUIPMENT LAYOUT PLAN**



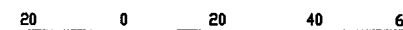
SCALE: 1"=20'



**MONOPOLE PLAN**  
NTS



**SOUTH ELEVATION**



SCALE: 1"=40'

Xref: BORD.dwg, M-BASE.dwg  
 PLOT: MCHRS01PHE  
 PLOT: MCHRS01PHE  
 I:\projects\11-19-03\Billing\_Counsel\853201.dwg  
 Title: 11-19-03.ctb

**Goodkind & O'Dea, Inc.**  
 A Dewberry Company  
 59 Elm Street, Suite 101  
 New Haven, CT 06510  
 p. (203) 776-2277  
 f. (203) 776-2288

Engineers  
 Planners  
 Surveyors

**CANTON 2 CT**  
 540 CHERRY BROOK ROAD  
 CANTON, CONNECTICUT 06019

**SBA TOWERS, INC.**

80 EASTERN BOULEVARD  
 GLASTONBURY, CONNECTICUT  
 (860) 859-9101  
 MARK ROBERTS

ONE TOWN CENTER RD., 3RD FL.  
 BOCA RATON, FL 33486  
 (561) 995-7670

△	ISSUE FOR SITING COUNCIL	WLG	JSG	FDK	
△	PRELIMINARY ISSUE FOR SITING COUNCIL	MJS	JSG	FDK	
NO.	DATE	REVISIONS	BY	CHK	APP'D
SCALE AS NOTED		DESIGNED JSG	DRAWN MJS		

**SITE NUMBER 907-007-853**  
**CANTON 2 CT**  
**LAYOUT PLAN AND ELEVATION**

DRAWING NUMBER	REV
CT-853Z1	0



C Squared Systems, LLC  
13 Forest Drive  
East Kingston, NH 03827  
Phone 603-770-3143  
Email:  
scott.pollister@csquaredsystems.com

---

## Calculated Radio Frequency Emissions

Site Number 907-008-853  
540 Cherry Brook Road, Canton, CT

---

SBA Network Services, Inc

A horizontal dotted line with a solid black arrowhead pointing to the right, positioned below the text 'SBA Network Services, Inc'.

# TABLE OF CONTENTS

1.	INTRODUCTION	3
2.	SITE DATA	3
3.	RF EXPOSURE PREDICTION METHODS	4
4.	FCC GUIDELINES FOR EVALUATING RF RADIATION EXPOSURE LIMITS	4
5.	CALCULATION RESULTS	5
6.	CONCLUSION	5
7.	STATEMENT OF CERTIFICATION	6
8.	REFERENCES	7
9.	ATTACHMENTS	
	a. TABLE 1 - LIMITS FOR MAXIMUM PERMISSIBLE EXPOSURE (MPE)	8
	b. FIGURE 1 - LIMITS FOR MPE GRAPH	9

## 1. Introduction

The purpose of this report is to investigate compliance with applicable federal, state and local EMF regulations for the 150-foot wireless telecommunications facility at 540 Cherry Brook Road in Canton, CT.

These calculations assume that the antennas are operating at 100 percent capacity, that all antenna channels are transmitting simultaneously, and that the radio transmitters are operating at full power. Obstructions (trees, buildings etc.) that would normally attenuate the signal are not taken into account. As a result, the predicted signal levels are much more conservative (higher) than the actual signal levels will be from the finished installation.

The results will be listed as a percentage of current Maximum Permissible Exposure (% MPE) limits as listed in the FCC OET Bulletin 65 Edition 97-01. Public exposure to radio frequencies is regulated and enforced in units of microwatts per square centimeter ( $\mu\text{W}/\text{cm}^2$ ). The number of  $\mu\text{W}/\text{cm}^2$  emitted is called the power density. The general population exposure limit for the cellular band is  $580 \mu\text{W}/\text{cm}^2$ , and the general population exposure limit for the PCS band is  $1000 \mu\text{W}/\text{cm}^2$ . Because each carrier will be using different frequency bands, and each frequency band has different exposure limits, it is necessary to report percent of MPE rather than power density.

## 2. Site Data

Carrier	Freq (MHz)	# of Channels per Sector	# of Sectors	Height of Antenna	Power per Channel (Watts ERP)
AT&T	1900	16	3	140'	250
Verizon	800	24	3	150'	100
Town of Canton 1	159.79650	1	1	150'	400
Town of Canton 2	37.74	1	1	150'	200
Town of Canton 3	453.6850	1	1	150'	20

### 3. RF Exposure Prediction Methods

The FCC has established the following equation to estimate the power density in the far-field region.

$$\text{Power Density} = \left( \frac{4 \times \text{EIRP}}{4 \times \pi \times R^2} \right) \times \text{Off Beam Loss}$$

Where:

*EIRP = Effective Isotropic Radiated Power*

*R = Radial distance =  $\sqrt{(H^2 + V^2)}$*

*H = Horizontal distance from antenna*

*V = Vertical distance from bottom of antenna*

*Maximum Off beam loss is limited to 10 dB to insure a conservative result*

### 4. FCC Guidelines for Evaluating RF Radiation Exposure Limits

In 1985, the FCC established rules to regulate radio frequency (RF) exposure from FCC licensed antenna facilities. In 1996, the FCC updated these rules, which were further amended in August 1997 by OET Bulletin 65 Edition 97-01. These new rules include limits for Maximum Permissible Exposure (MPE) for transmitters operating between 300 kHz and 100 GHz. The FCC MPE limits are based on exposure limits recommended by the National Council on Radiation Protection and Measurements (NCRP), the exposure limits developed by the Institute of Electrical and Electronics Engineers, Inc., (IEEE) and adopted by the American National Standards Institute (ANSI).

The attachments labeled Table 1 and Figure 1 are excerpts from OET Bulletin 65 and define the Maximum Exposure Limit. As shown in these excerpts, each frequency band has different exposure limits, requiring power density to be reported as a percent of Maximum Permissible Exposure (MPE) when dealing with carriers transmitting in different frequency bands.

## 5. Calculation Results

The calculated results indicate that radio frequency emissions expected from this installation are significantly less than the regulatory emission limits for public exposure. Specific maximum power densities and their percentage of the limits are listed below for each individual carrier.

### Previously Submitted Maximum Power Densities

Carrier	Max % Limits	Height	Submitted For	Report Date	Date Submitted
*Verizon	5.98	140'	Verizon Wireless	2/16/01	2/16/01
<b>*Updated Verizon Results</b>	<b>5.21</b>	<b>150'</b>			

\*Original submittal calculated at 140-feet, updated results reflect revised antenna centerline of 150-feet

### New Additional Carrier Maximum Power Densities

Carrier	Calculated Maximum Power Density ( $\mu\text{W}/\text{cm}^2$ )	MPE Limit ( $\mu\text{W}/\text{cm}^2$ )	Max % Limits
AT&T	37.6	1000	3.76
Town of Canton 1	1.08	200	.542
Town of Canton 2	.542	200	.271
Town of Canton 3	.05420	302	.0179

### Cumulative Percent of Maximum Permissible Exposure

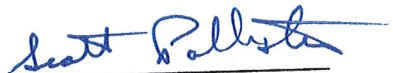
	Max % Limits
Cumulative	9.8

## 6. Conclusion

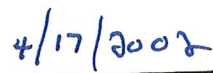
All of the calculations in this report were computed for the 150-foot wireless facility in Canton, CT. As can be seen from the above tables and attachments, the expected aggregate radio frequency emissions from the proposed installation are extremely low and well below the regulatory emission limits for general public exposure, even under very conservative assumptions. The highest aggregate percent Maximum Permissible Exposure are less than 9.8% of the FCC limits for general public as outlined in FCC OET Bulletin 65 Edition 97-01. The cumulative percent Maximum Permissible Exposure is based on the updated Verizon results and the new additional carrier results.

## 7. Statement of Certification

I certify to the best of my knowledge that the statements in this report are true and accurate. The calculations were computed in accordance with and using techniques in compliance with ANSI/IEEE Std. C95.3, ANSI/IEEE Std. C95.1 and FCC OET Bulletin 65 Edition 97-01.



Scott Pollister  
C Squared Systems



Date

# References

OET Bulletin 65 - Edition 97-01 - August 1997 Federal Communications Commission  
Office of Engineering & Technology

ANSI C95.1-1982, American National Standard Safety Levels With Respect to Human Exposure  
to  
Radio Frequency Electromagnetic Fields, 300 kHz to 100 GHz. IEEE-SA Standards Board

IEEE Std C95.3-1991 (Reaff 1997), IEEE Recommended Practice for the Measurement of Potentially  
Hazardous Electromagnetic Fields - RF and Microwave. IEEE-SA Standards Board  
10.



**Table 1. LIMITS FOR MAXIMUM PERMISSIBLE EXPOSURE (MPE)**

**(A) Limits for Occupational/Controlled Exposure**

Frequency Range (MHz)	Electric Field Strength (E) (V/m)	Magnetic Field Strength (H) (A/m)	Power Density (S) (mW/cm <sup>2</sup> )	Averaging Time  E  <sup>2</sup> ,  H  <sup>2</sup> or S (minutes)
0.3-3.0	614	1.63	(100)*	6
3.0-30	1842/f	4.89/f	(900/f <sup>2</sup> )*	6
30-300	61.4	0.163	1.0	6
300-1500	--	--	f/300	6
1500-100,000	--	--	5	6

**(B) Limits for General Population/Uncontrolled Exposure**

Frequency Range (MHz)	Electric Field Strength (E) (V/m)	Magnetic Field Strength (H) (A/m)	Power Density (S) (mW/cm <sup>2</sup> )	Averaging Time  E  <sup>2</sup> ,  H  <sup>2</sup> or S (minutes)
0.3-1.34	614	1.63	(100)*	30
1.34-30	824/f	2.19/f	(180/f <sup>2</sup> )*	30
30-300	27.5	0.073	0.2	30
300-1500	--	--	f/1500	30
1500-100,000	--	--	1.0	30

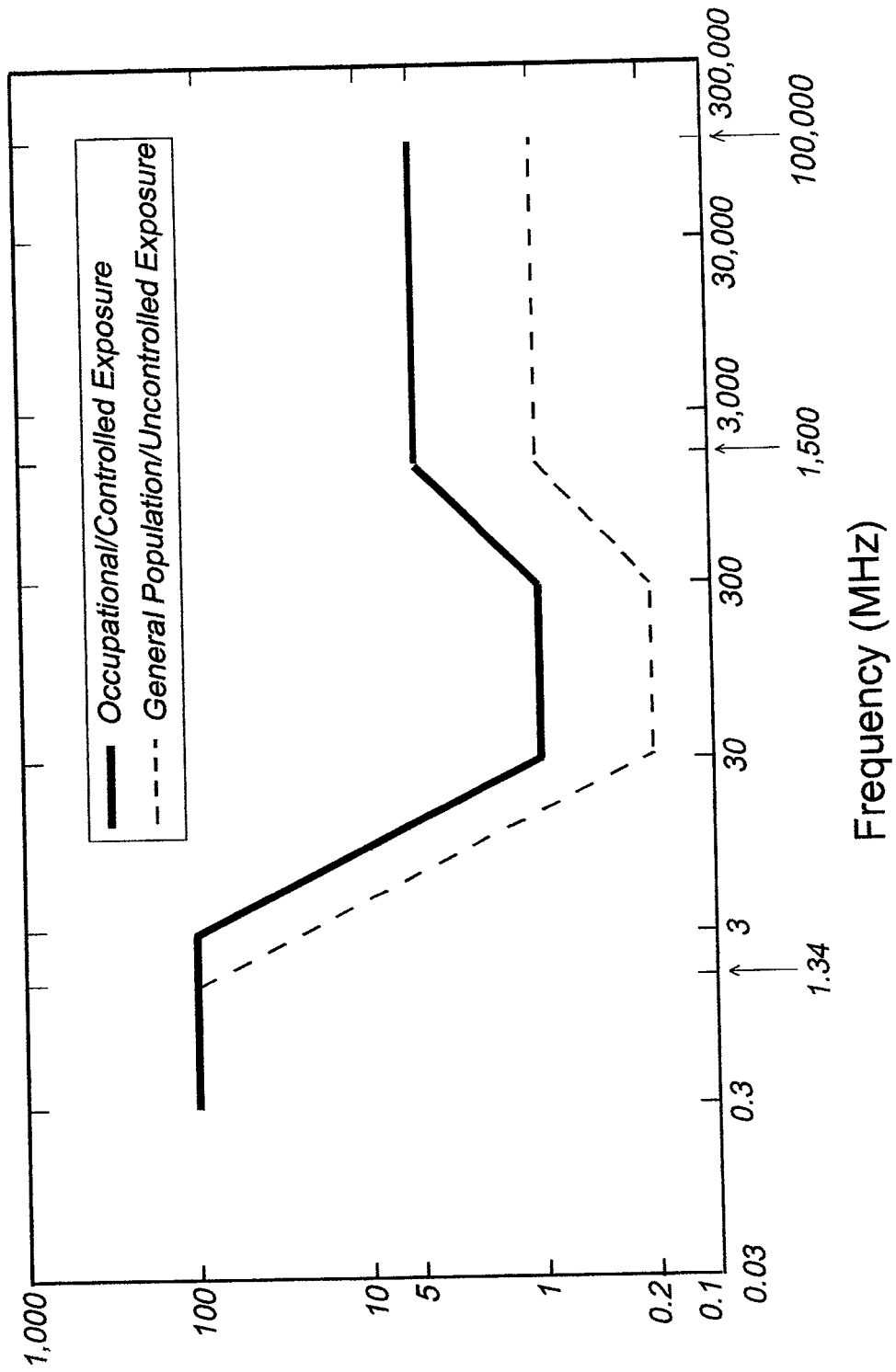
f = frequency in MHz

\*Plane-wave equivalent power density

NOTE 1: *Occupational/controlled* limits apply in situations in which persons are exposed as a consequence of their employment provided those persons are fully aware of the potential for exposure and can exercise control over their exposure. Limits for occupational/controlled exposure also apply in situations when an individual is transient through a location where occupational/controlled limits apply provided he or she is made aware of the potential for exposure.

NOTE 2: *General population/uncontrolled* exposures apply in situations in which the general public may be exposed, or in which persons that are exposed as a consequence of their employment may not be fully aware of the potential for exposure or can not exercise control over their exposure.

**Figure 1. FCC Limits for Maximum Permissible Exposure (MPE)**  
**Plane-wave Equivalent Power Density**



# HURWITZ & SAGARIN LLC

April 18, 2002

S. Derek Phelps  
Executive Director  
Connecticut Siting Council  
10 Franklin Square  
New Britain, Connecticut 06051

**Re: Notice of Exempt Modifications**

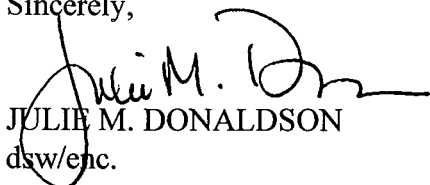
171 South Broad Street, Stonington, Connecticut  
1825 South Main Street, Middletown, Connecticut  
229 Cheshire Road, Prospect, Connecticut  
106 Willenbrock Road, Oxford, Connecticut  
540 Cherry Brook Road, Canton, Connecticut  
267 Norwich Westerly Road, North Stonington, Connecticut

Dear Mr. Phelps:

On behalf of SBA Properties, Inc. ("SBA"), I am pleased to submit the above referenced exempt modification applications. Enclosed are originals plus twenty (20) copies of each petition requesting a determination that SBA's co-location on the telecommunications facilities noted satisfies the requirements set forth in R.C.S.A. §16-50j-72(b)(2). Checks in the amount of \$500.00 each to cover filing fee for these petitions are also enclosed.

The appropriate town officials have been sent notice of these petitions by certified mail.

Sincerely,

  
JULIE M. DONALDSON  
dsw/enc.

# HURWITZ & SAGARIN LLC

April 25, 2002

David Martin  
Staff Analyst  
Connecticut Siting Council  
10 Franklin Square  
New Britain, Connecticut 06051



**Re: Notice of Exempt Modification  
SBA Telecommunications Facility  
267 Norwich Westerly Road  
North Stonington, Connecticut**

**Notice of Exempt Modification  
SBA Telecommunications Facility  
540 Cherry Brook Road  
Canton, Connecticut**

Dear Mr. Martin:

Enclosed please find the coordinate information you requested for the above referenced North Stonington telecommunications tower.

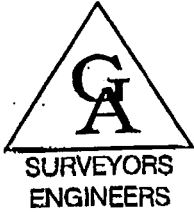
We will provide you with revised information regarding the Town equipment located on the Cherry Brook Road, Canton telecommunications tower as soon as it is available.

Please contact me if you have any questions.

Respectfully Submitted,

Julie M. Donaldson

cc: Harold Hewett, Bechtel  
Mark Roberts, SBA  
Christopher Fisher, Esq.



*Gesick & Associates, P.C.*  
PROFESSIONAL SURVEYORS & ENGINEERS

19 CEDAR ISLAND AVENUE • CLINTON, CT 06413 • (860) 669-7799 • Fax (860) 669-5833 • e-mail gesick@aol.com

December 8, 1998

Mr. Scott Thomae  
SBA, Inc.  
125 Shaw Street, Suite #116  
New London, CT 06320

RE: 267 Norwich Westerly Road (RT 2) - North Stonington, Connecticut  
SBA Site #4288/NSVFD

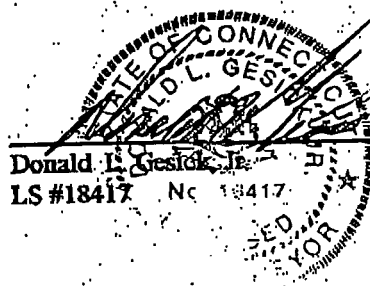
Dear Scott,

This letter is in reference to a proposed cellular site located at 267 Norwich Westerly Road (RT 2) North Stonington, Connecticut.

I hereby certify to "2-C" tolerances the following information:

NAD 27 State Plane	N 221133 E 838014
Latitude	N 41°-26'-13.08"
Longitude	W 71°-52'-55.10"
NGVD 1929	175'
Proposed AGL	150'

Latitude/Longitude/Elevations were obtained utilizing Total Stations referenced to Conn DOT Baseline Station. Latitude/Longitude are referenced to NAD27 Connecticut zone. Coordinates shown, if any, are expressed in US feet. Elevations are referenced to NGVD 1929.



*"Certified Small Business Equal Opportunity Employer"*