

November 9, 2017

Melanie A. Bachman, Esq.
Executive Director/Staff Attorney
Connecticut Siting Council
10 Franklin Square
New Britain, CT 06051

Re: **Notice of Exempt Modification – Facility Modification
14 Canton Springs Road, Canton, Connecticut**

Dear Ms. Bachman:

Cellco Partnership d/b/a Verizon Wireless (“Cellco”) currently maintains twelve (12) antennas at the 120-foot level of the existing 140-foot tower at 14 Canton Springs Road in Canton, Connecticut (the “Property”). The tower is owned by ATC Sequoia LLC (“ATC”). The Council approved Cellco’s shared use of the existing tower in 1999. Cellco now intends to modify its facility by replacing nine (9) existing remote radio heads (“RRHs”) with six (6) newer model RRHs on Cellco’s existing antenna platform. Included in Attachment 1 are specifications for the new RRHs.

Please accept this letter as notification pursuant to R.C.S.A. § 16-50j-73, for construction that constitutes an exempt modification pursuant to R.C.S.A. § 16-50j-72(b)(2). In accordance with R.C.S.A. § 16-50j-73, a copy of this letter is being sent to Leslee Hill, First Selectman of the Town of Canton; Neil S. Pade, Canton’s Director of Planning and Community Development; Canton Volunteer Fire Company Inc., the owner of the Property; and ATC, the tower owner.

The planned modifications to the facility fall squarely within those activities explicitly provided for in R.C.S.A. § 16-50j-72(b)(2).

1. The proposed modifications will not result in an increase in the height of the existing structure. Cellco’s replacement RRHs will be installed on its existing platform at the 120-foot level on the tower.

Melanie A. Bachman, Esq.
November 9, 2017
Page 2

2. The proposed modifications will not involve any change to ground-mounted equipment and, therefore, will not require the extension of the site boundary.
3. The proposed modifications will not increase noise levels at the facility by six decibels or more, or to levels that exceed state and local criteria.
4. The operation of the replacement antennas will not increase radio frequency (RF) emissions at the facility to a level at or above the Federal Communications Commission (FCC) safety standard. A cumulative General Power Density table for the modified facility is included in Attachment 2.
5. The proposed modifications will not cause a change or alteration in the physical or environmental characteristics of the site.
6. The tower and its foundation can support Cellco's proposed modifications. (*See* Structural Analysis Report included in Attachment 3).

A copy of the parcel map and owner information for the Property is included in Attachment 4. A Certificate of Mailing verifying that this filing was sent to municipal officials and the owner of the Property is included in Attachment 5.

For the foregoing reasons, Cellco respectfully submits that the proposed modifications to the above-referenced telecommunications facility constitutes an exempt modification under R.C.S.A. § 16-50j-72(b)(2).

Sincerely,



Kenneth C. Baldwin

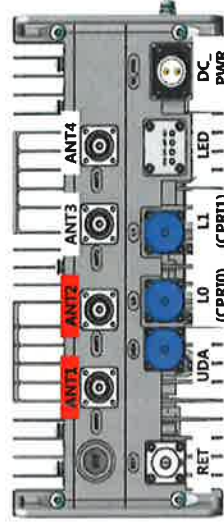
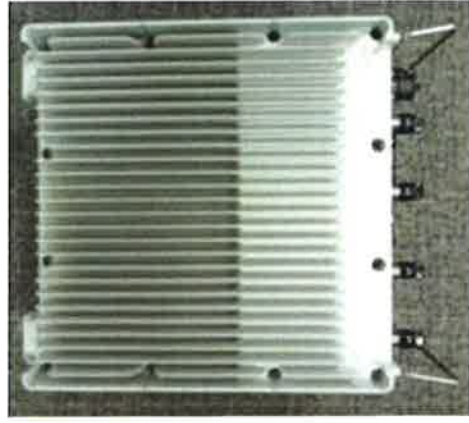
Enclosures

Copy to:

Leslee Hill, Canton First Selectman
Neil S. Pade, Canton's Director of Planning and Community Development
Canton Volunteer Fire Company Inc.
ATC
Tim Parks

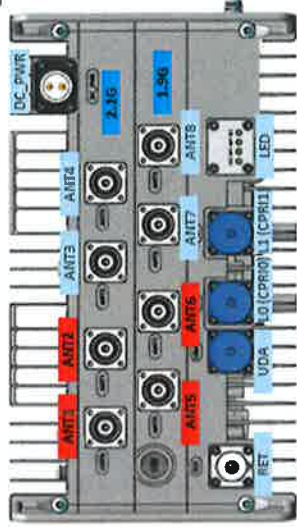
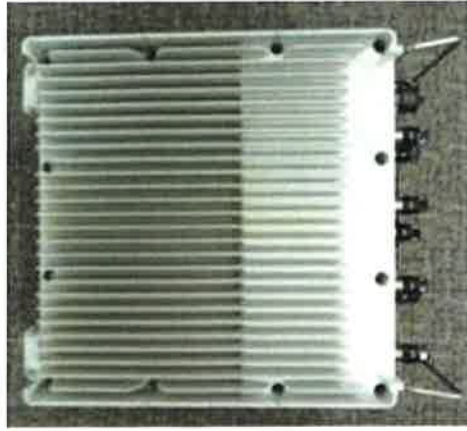
ATTACHMENT 1

700+850MHz Dual Band RRRH



Item	Specification
Band	Band13 (700MHz) Band5 (850MHz)
Frequency	DL : 746~756MHz UL : 777~787MHz
IBW	10MHz
OBW	10MHz
Carrier Bandwidth	10MHz
# of carriers	1 carrier
Total # of carriers	4C
RF Chain	4T4R, 2T4R, 2T2R (SW configurable)
RF Output Power	Total : 320W 4 x 40W or 2 x 60W
Spectrum Analyzer	TX/RX Support
Noise Figure	Less than 3.0 dB
RX Sensitivity	Typical : -105dBm @1Rx (25RBs 5MHz)
Modulation	256QAM support
Input Power	-48VDC (-38VDC to -57VDC)
Power Consumption	About 1,106Watt @ 100% RF load, typical conditions + TMA/RET
Size (WHD)	380 x 380 x 207 mm (15.0" x 15.0" x 8.1")
Volume	29.9 L
Weight	31.9 kg(70.3 lb)
(W/o Solar Shield & finger guard)	
Operating Temperature	-40°C (-40°F) ~ 55°C (131°F) (Without solar load)
Cooling	Natural convection
Unwanted Emission	3GPP 36.104 Category A, FCC 47 CFR 27.53 c), f)
CPRI Cascade	3GPP 36.104 Category A, FCC 47 CFR 22.917
Optic Interface	Not supported
RET & TMA Interface	20km, 2 ports (9.8Gbps x 2), SFP, single mode, Duplex AISG 2.2
Bias-T	2 ports (Max. 49W)
Mounting Options	Pole, wall, tower, side by side, back to back
NB-IoT	Support
PIM Cancellation	Support
# of antenna port	4
External Alarm	4

PCS+AWS Dual Band RRH



8 port Dual Band

Item	Specification
Band	Band2 (1.9GHz) Band66 (2.1GHz)
Frequency	DL : 1930~1990MHz UL : 1850~1910MHz
IBW	60MHz
OBW	20MHz
Carrier Bandwidth	5MHz, 10MHz, 15MHz, 20MHz
# of carriers	2 carriers
Total # of carriers	4 carriers
RF Chain	4T4R, 2T4R, 2T2R (SW configurable) Total : 320W (for OBW 40MHz)
RF Output Power	4 x 40W or 2 x 60W 4 x 60W or 2 x 90W
Spectrum Analyzer	TX/RX Support
Noise Figure	Less than 3.0 dB
RX Sensitivity	Typical : -105dBm @1Rx (25RBs 5MHz)
Modulation	256QAM support
Input Power	-48VDC (-38VDC to -57VDC)
Power Consumption	About 1.270 Watt @ 100% RF load, typical conditions (w/ BAS OOBExTMA/RET)
Size (WHD)	380 x 380 x 255 mm (15.0" x 15.0" x 10.0") (w/ BAS OOBEx)
Volume	36.8 L
Weight	38.3 kg(84.4lb)
(W/o Solar Shield & finger guard)	
Operating Temperature	-40°C (-40°F) ~ 55°C (131°F) (Without solar load)
Cooling	Natural convection
Unwanted Emission	3GPP 36.104 Category A [B2] : FCC 47 CFR 24.238 [B66] : FCC 47 CFR 27.53 h)
CPRI Cascade	Not supported
Optic Interface	20km, 2 ports (9.8Gbps x 2), SFP, single mode, Duplex
RET & TMA Interface	AISG 2.2
Bias-T	4 ports (2 ports per band) (Max. 49W)
Mounting Options	Pole, wall, tower, side by side, back to back
NB-IoT	Support
PIM Cancellation	Support
# of antenna port	4
External Alarm	4

ATTACHMENT 2

Site Name: Canton Tower Height: 140Ft		General	Power	Density				
CARRIER	# OF CHAN.	WATTS ERP	HEIGHT	CALC. POWER DENS	FREQ.	MAX. PERMISS. EXP.	FRACTION MPE	Total
*AT&T	2	438	127.7	850	0.0213	0.5667	0.38%	
*AT&T	1	440	127.7	1900	0.0107	1.0000	0.11%	
*AT&T	1	492	127.7	850	0.0119	0.5667	0.21%	
*AT&T	1	1094	127.7	2300	0.0266	1.0000	0.27%	
*AT&T	1	793	128	737	0.0191	0.4913	0.39%	
*AT&T	1	1734	128	1900	0.0419	1.0000	0.42%	
*AT&T	2	438	127.7	1900	0.0213	1.0000	0.21%	
*AT&T	1	440	127.7	850	0.0107	0.5667	0.19%	
*Pocket (now MetroPCS)	3	631	83	2130	0.1148	1.0000	1.15%	
*Sprint	2	693	90	1900	0.0706	1.0000	0.71%	
*Sprint	1	390	90	850	0.0199	0.5667	0.35%	
*Canton FD	1	71	140	300	0.0014	0.2000	0.07%	
*Nextel	9	100	110	851	0.0299	0.5673	0.53%	
*T-Mobile	2	1117	100	2100	0.0394	1.0000	0.39%	
*T-Mobile	2	565	100	1900	0.0394	1.0000	0.39%	
*T-Mobile	2	559	100	2100	0.0394	1.0000	0.39%	
*T-Mobile	1	703	100	700	0.0286	0.4667	0.61%	
Verizon PCS	1	5000	120	0.1248	1970	1.0000	12.48%	
Verizon Cellular	1	3050	120	0.0762	869	0.5793	13.15%	
Verizon 850 LTE	3	403	120	0.0302	869	0.5793	5.21%	
Verizon AWS	1	7400	120	0.1848	2145	1.0000	18.48%	
Verizon 700	1	2200	120	0.0549	746	0.4973	11.05%	67.13%
* Source: Siting Council								

ATTACHMENT 3



AMERICAN TOWER®
CORPORATION

Structural Analysis Report

Structure : 140 ft Monopole
ATC Site Name : Canton CT, CT
ATC Site Number : 411256
Engineering Number : OAA715611_C3_01
Proposed Carrier : Verizon
Carrier Site Name : Canton
Carrier Site Number : N/A
Site Location : 14 Canton Springs Road
Canton, CT 06019-2401
41.822900,-72.895200
County : Hartford
Date : November 2, 2017
Max Usage : 63%
Result : Pass

Prepared By:
Kingsley C. Igboanugo
Structural Engineer III

Reviewed By:



Nov 2 2017 5:26 PM **cosign**

COA: PEC.0001553



Table of Contents

Introduction	1
Supporting Documents	1
Analysis	1
Conclusion.....	1
Existing and Reserved Equipment.....	2
Equipment to be Removed.....	2
Proposed Equipment	3
Structure Usages	3
Foundations	3
Deflection, Twist, and Sway.....	3
Standard Conditions	4
Calculations	Attached



Introduction

The purpose of this report is to summarize results of a structural analysis performed on the 140 ft monopole to reflect the change in loading by Verizon.

Supporting Documents

Tower Drawings	EEl Project #4960, dated May 20, 1999
Foundation Drawing	EEl Project #4960, dated May 21, 1999
Geotechnical Report	Clarence Welti Project #Banm Tower Site, dated November 23, 1998

Analysis

The tower was analyzed using American Tower Corporation's tower analysis software. This program considers an elastic three-dimensional model and second-order effects per ANSI/TIA-222.

Basic Wind Speed:	93 mph (3-Second Gust, V_{ASD}) / 119 mph (3-Second Gust, V_{ULT})
Basic Wind Speed w/ Ice:	50 mph (3-Second Gust) w/ 1" radial ice concurrent
Code:	ANSI/TIA-222-G / 2012 IBC / 2016 Connecticut State Building Code
Structure Class:	II
Exposure Category:	B
Topographic Category:	1
Crest Height:	0 ft
Spectral Response:	$S_s = 0.18, S_1 = 0.06$
Site Class:	D - Stiff Soil

Conclusion

Based on the analysis results, the structure meets the requirements per the applicable codes listed above. The tower and foundation can support the equipment as described in this report.

If you have any questions or require additional information, please contact American Tower via email at Engineering@americantower.com. Please include the American Tower site name, site number, and engineering number in the subject line for any questions.



Existing and Reserved Equipment

Elevation ¹ (ft)		Qty	Antenna	Mount Type	Lines	Carrier
Mount	RAD					
138.0	148.0	1	18' Omni	Stand-Off	(2) 7/8" Coax	--
130.0	130.0	6	CCI DTMAPB7819VG12A	Platform w/ Handrails	(12) 7/8" Coax (3) 3" Conduit (4) 0.78" 8 AWG 6 (2) 0.39" Fiber Trunk	AT&T Mobility
		2	Raycap DC6-48-60-0-8F			
		6	Ericsson RRUS-11 (50 lbs.)			
		3	Ericsson RRUS 32 (50.8 lbs)			
		1	KMW AM-X-CD-14-65-00T-RET			
		3	Kathrein 800-10121			
		3	CSS DUO1417-8686			
		1	Andrew SBNHH-1D65A (33.5 lbs)			
		1	KMW AM-X-CD-17-65-00T-RET (96" Height)			
		1	Andrew SBNH-1D6565C (60.8 lbs)			
		2	CCI HPA-65R-BUU-H8			
120.0	120.0	2	RFS DB-T1-6Z-8AB-0Z	Platform w/ Handrails	(16) 1 5/8" Coax (2) 1 5/8" Fiber	Verizon
		4	Antel LPA-80080/4CF ____			
		2	Antel LPA-80063/4CF ____			
		3	Antel BXA-70063-6CF-EDIN-2			
		6	Commscope SBNHH-1D65B			
		1	VZW Unused Reserve: 15,989 sq in			
104.0	104.0	2	Kathrein Smart Bias Tee	Low Profile Platform	(8) 1 5/8" Coax	T-Mobile
		2	Ericsson KRY 112 489/2			
		2	RFS APXV18-209014-C			
		2	Commscope LNX-6515DS-VTM			
94.0	94.0	1	PCTEL GPS-TMG-HR-26N	Low Profile Platform	(4) 1 1/4" Hybriflex (1) 1/2" Coax	Sprint Nextel
		3	Alcatel-Lucent RRH2x50-08			
		3	Alcatel-Lucent 800MHz RRH			
		3	Alcatel-Lucent 1900MHz 4X45 RRH			
		3	Alcatel-Lucent TD-RRH8x20-25 w/ Solar Shield			
		3	RFS APXVSP18-C-A20			
		3	Commscope DT465B-2XR			
83.0	83.0	3	Kathrein 742 213	Low Profile Platform	-	Metro PCS

Equipment to be Removed

Elevation ¹ (ft)		Qty	Antenna	Mount Type	Lines	Carrier
Mount	RAD					
120.0	120.0	3	Alcatel-Lucent B13 RRH4x30-4R 700U	-	-	Verizon
		3	Alcatel-Lucent PCS B25 RRH2x60/4x30			
		3	Alcatel-Lucent B66 RRH4x45			



Proposed Equipment

Elevation ¹ (ft)		Qty	Antenna	Mount Type	Lines	Carrier
Mount	RAD					
120.0	120.0	3	Samsung 700/850MHz Dual Band RRH	Platform w/ Handrails	-	Verizon
		3	Samsung PCS/AWS Dual Band RRH			

¹Mount elevation is defined as height above bottom of steel structure to the bottom of mount, RAD elevation is defined as center of antenna above ground level (AGL).

Structure Usages

Structural Component	Controlling Usage	Pass/Fail
Anchor Bolts	44%	Pass
Shaft	47%	Pass
Base Plate	63%	Pass

Foundations

Reaction Component	Original Design Reactions	Factored Design Reactions*	Analysis Reactions	% of Design
Moment (Kips-Ft)	3,921.8	5,294.4	2,713.4	51%
Shear (Kips)	38.7	52.2	26.1	50%

* The design reactions are factored by 1.35 per ANSI/TIA-222-G, Sec. 15.5.1

The structure base reactions resulting from this analysis are acceptable when compared to those shown on the original structure drawings, therefore no modification or reinforcement of the foundation will be required.

Deflection and Sway*

Antenna Elevation (ft)	Antenna	Carrier	Deflection (ft)	Sway (Rotation) (°)
120.0	Samsung PCS/AWS Dual Band RRH	Verizon	1.118	1.078
	Samsung 700/850MHz Dual Band RRH			

*Deflection and Sway was evaluated considering a design wind speed of 60 mph (3-Second Gust) per ANSI/TIA-222-G



Standard Conditions

All engineering services are performed on the basis that the information used is current and correct. This information may consist of, but is not necessary limited, to:

- Information supplied by the client regarding the structure itself, antenna, mounts and feed line loading on the structure and its components, or other relevant information.

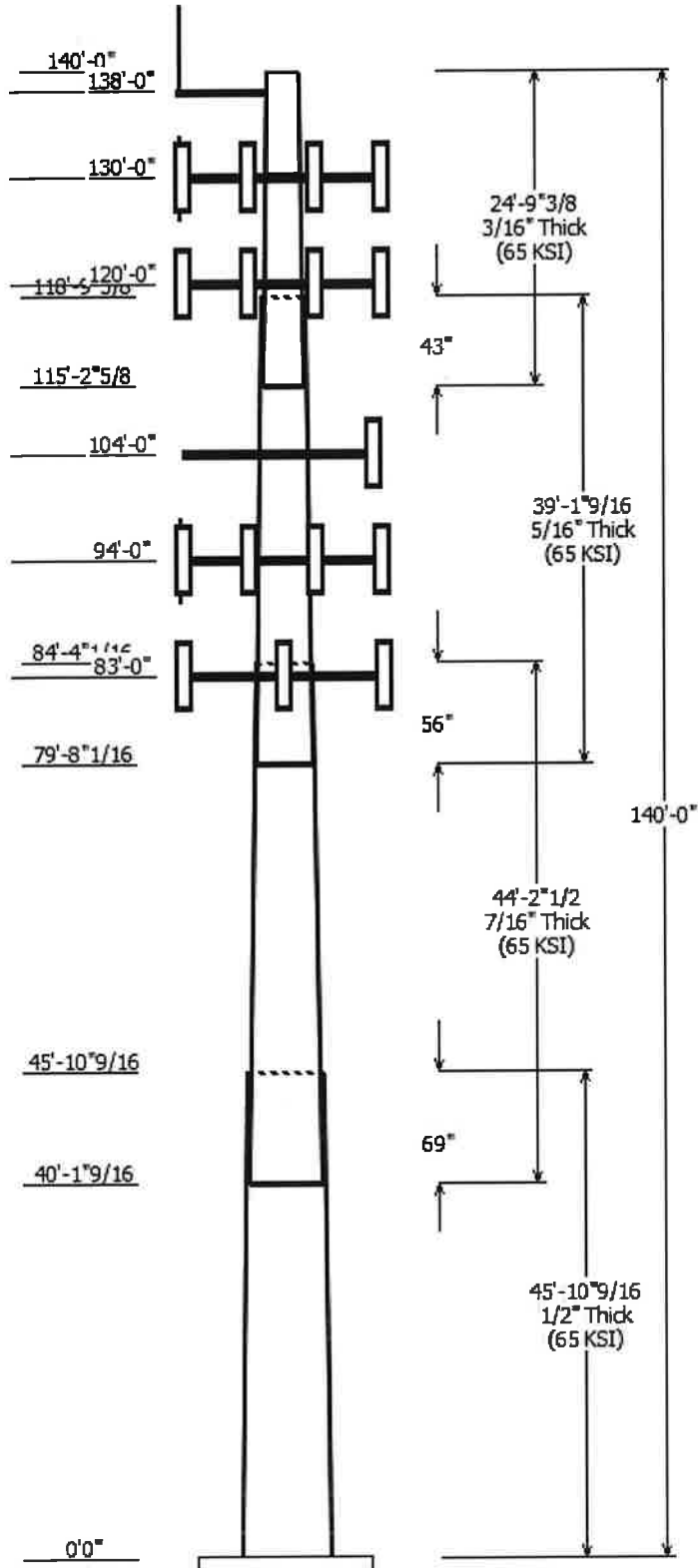
- Information from drawings in the possession of American Tower Corporation, or generated by field inspections or measurements of the structure.

It is the responsibility of the client to ensure that the information provided to A.T. Engineering Service, PLLC and used in the performance of our engineering services is correct and complete. In the absence of information to the contrary, we assume that all structures were constructed in accordance with the drawings and specifications and that their capacity has not significantly changed from the "as new" condition.

Unless explicitly agreed by both the client and American Tower Corporation, all services will be performed in accordance with the current revision of ANSI/TIA -222. The design basic wind speed will be determined based on the minimum basic wind speed as prescribed in ANSI/TIA-222. Although every effort is taken to ensure that the loading considered is adequate to meet the requirements of all applicable regulatory entities, we can provide no assurance to meet any other local and state codes or requirements. If wind and ice loads or other relevant parameters are to be different from the minimum values recommended by the codes, the client shall specify the exact requirement.

All services are performed, results obtained, and recommendations made in accordance with generally accepted engineering principles and practices. A.T. Engineering Service, PLLC is not responsible for the conclusions, opinions and recommendations made by others based on the information we supply.

© 2007 - 2017 by ATC IP LLC. All rights reserved.



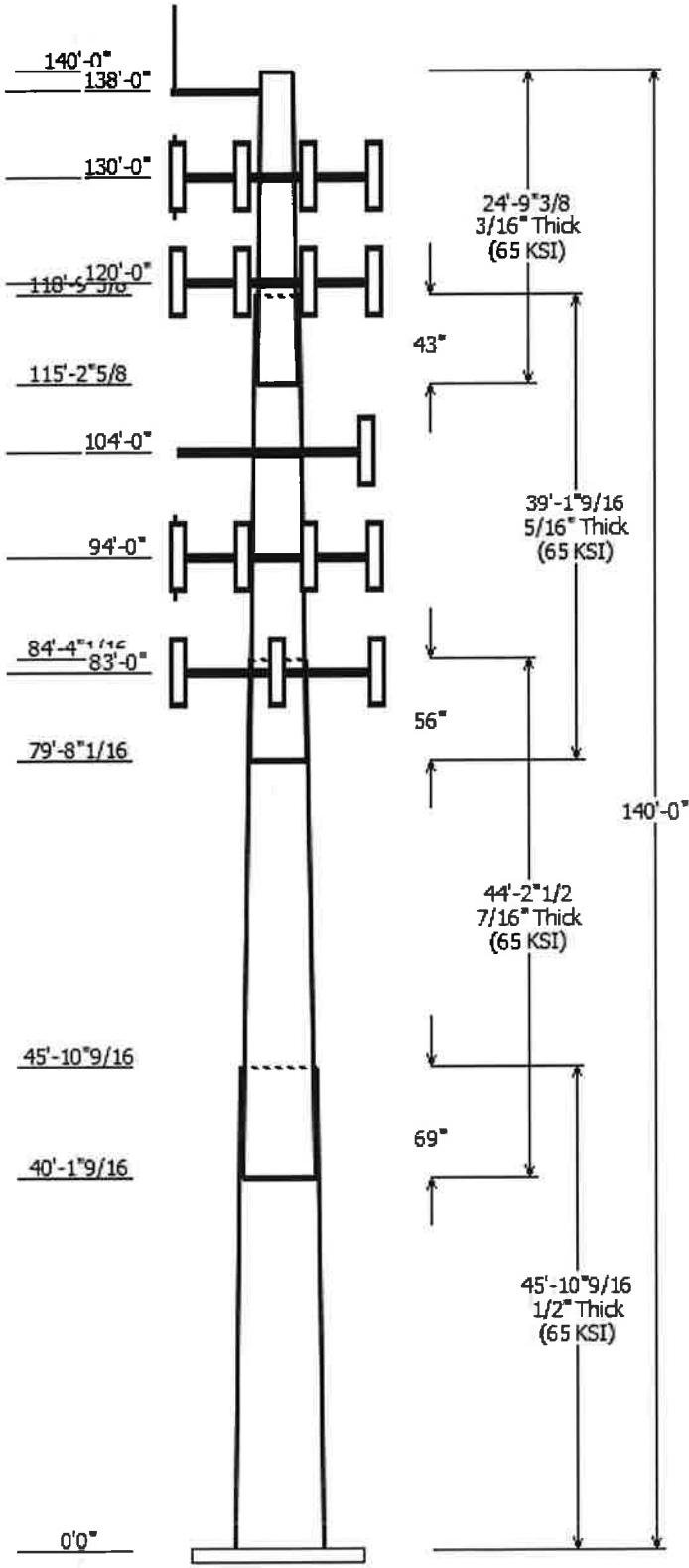
Job Information	
Pole :	411256
Code:	ANSI/TIA-222-G
Description :	140 ft Monopole
Client :	VERIZON WIRELESS
Struct Class :	II
Location :	CANTON CT, CT
Shape :	18 Sides
Exposure :	B
Height :	140.00 (ft)
Topo :	1
Base Elev (ft):	0.00
Taper:	0.249089(in/ft)

Sections Properties								
Shaft Section	Length (ft)	Diameter (in)		Thick Joint (in)	Type	Overlap Length (in)	Taper (in/ft)	Steel Grade (ksi)
		Across Top	Across Bottom					
1	45.880	39.57	51.00	0.500		0.000	0.249100	65
2	44.210	30.86	41.87	0.438	Slip Joint	69.000	0.249100	65
3	39.130	22.90	32.65	0.313	Slip Joint	56.000	0.249100	65
4	24.780	18.00	24.17	0.188	Slip Joint	43.000	0.249100	65

Discrete Appurtenance			
Attach Elev (ft)	Force Elev (ft)	Qty	Description
138.000	138.000	1	Stand-Off
138.000	148.000	1	18' Omni
130.000	130.000	1	KMW AM-X-CD-14-65-00T-RET
130.000	130.000	2	CCI HPA-65R-BUU-H8
130.000	130.000	1	KMW AM-X-CD-17-65-00T-RET
130.000	130.000	1	Andrew SBNHH-1D65A (33.5
130.000	130.000	3	Ericsson RRUS 32 (50.8 lbs)
130.000	130.000	2	Raycap DC6-48-60-0-8F
130.000	130.000	1	Flat Platform w/ Handrails
130.000	130.000	3	Kathrein Scala 800-10121
130.000	130.000	1	Andrew SBNH-1D6565C (60.8
130.000	130.000	3	CSS DUO1417-8686
130.000	130.000	6	CCI DTMAPB7819VG12A
130.000	130.000	6	Ericsson RRUS-11 (50 lbs.)
120.000	120.000	3	Samsung 700/850MHz Dual
120.000	120.000	3	Samsung PCS/AWS Dual Band
120.000	120.000	6	Commscope SBNHH-1D65B
120.000	120.000	2	RFS DB-T1-6Z-8AB-0Z
120.000	120.000	1	Flat Platform w/ Handrails
120.000	120.000	3	Amphenol Antel BXA-70063-
120.000	120.000	2	Antel LPA-80063/4CF
120.000	120.000	4	Antel LPA-80080/4CF
120.000	120.000	1	VZW Unused Reserve: 15,989
104.000	104.000	1	Flat Low Profile Platform
104.000	104.000	2	Commscope LNX-6515DS-VTM
104.000	104.000	2	RFS APXV18-209014-C
104.000	104.000	2	Ericsson KRY 112 489/2
104.000	104.000	2	Kathrein Smart Bias Tee
94.000	94.000	1	Flat Low Profile Platform
94.000	94.000	3	Commscope DT465B-2XR
94.000	94.000	3	RFS APXSPP18-C-A20
94.000	94.000	3	Alcatel-Lucent TD-RRH8x20-25
94.000	94.000	3	Alcatel-Lucent 1900 MHz 4X45
94.000	94.000	3	Alcatel-Lucent 800 MHz RRH
94.000	94.000	3	Alcatel-Lucent RRH2x50-08
94.000	94.000	1	PCTEL GPS-TMG-HR-26N
83.000	83.000	1	Flat Low Profile Platform
83.000	83.000	3	Kathrein Scala 742 213

Linear Appurtenance			
Elev (ft)	From	To	Description
			Exposed To Wind

0.000	94.000	1 1/4" Hybriflex	No
0.000	94.000	1/2" Coax	No
0.000	104.0	1 5/8" Coax	Yes
0.000	120.0	1 5/8" Coax	No
0.000	120.0	1 5/8" Fiber	No
0.000	130.0	0.39" Fiber Trunk	No
0.000	130.0	0.78" 8 AWG 6	No
0.000	130.0	3" Conduit	No
0.000	130.0	7/8" Coax	No
0.000	138.0	7/8" Coax	No

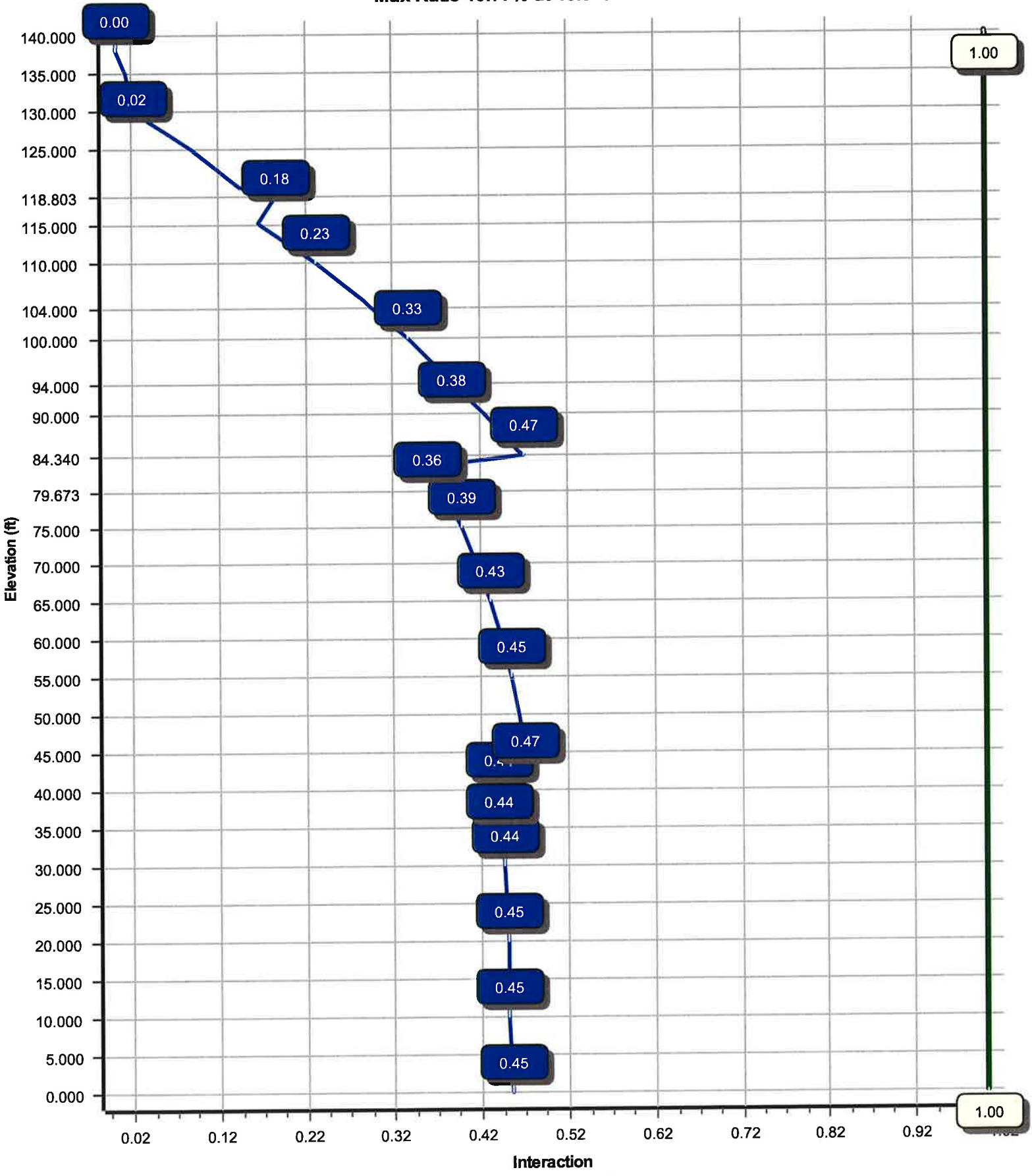


Load Cases	
1.2D + 1.6W	93 mph with No Ice
0.9D + 1.6W	93 mph with No Ice (Reduced DL)
1.2D + 1.0Di + 1.0Wi	50 mph with 1.00 in Radial Ice
(1.2 + 0.2Sds) * DL + E	Seismic Equivalent Lateral Forces Method
(1.2 + 0.2Sds) * DL + E	Seismic Equivalent Modal Analysis Method
(0.9 - 0.2Sds) * DL + E	Seismic (Reduced DL) Equivalent Lateral
(0.9 - 0.2Sds) * DL + E	Seismic (Reduced DL) Equivalent Modal
1.0D + 1.0W	Serviceability 60 mph

Reactions			
Load Case	Moment (kip-ft)	Shear (kip)	Axial (kip)
1.2D + 1.6W	2713.40	26.15	52.49
0.9D + 1.6W	2685.64	26.13	39.36
1.2D + 1.0Di + 1.0Wi	890.31	8.40	89.48
(1.2 + 0.2Sds) * DL + E ELFM	202.13	1.90	52.18
(1.2 + 0.2Sds) * DL + E EMAM	171.56	1.75	52.18
(0.9 - 0.2Sds) * DL + E ELFM	199.69	1.90	36.31
(0.9 - 0.2Sds) * DL + E EMAM	169.36	1.75	36.31
1.0D + 1.0W	701.53	6.80	43.77

Dish Deflections			
Load Case	Attach Elev (ft)	Deflection (in)	Rotation (deg)
	0.00	0.000	0.000

Load Case : 1.2D + 1.6W
Max Ratio 46.77% at 45.9 ft



Site Number: 411256

Code: ANSI/TIA-222-G

© 2007 - 2017 by ATC IP LLC. All rights reserved.

Site Name: CANTON CT, CT

Engineering Number: OAA715611_C3_01

11/2/2017 1:53:29 PM

Customer: VERIZON WIRELESS

Analysis Parameters

Location:	HARTFORD County, CT	Height (ft):	140
Code:	ANSI/TIA-222-G	Base Diameter (in):	51.00
Shape:	18 Sides	Top Diameter (in):	18.00
Pole Type:	Taper	Taper (in/ft) :	0.249
Pole Manufacturer:	EEL	Rotation (deg) :	0.00

Ice & Wind Parameters

Structure Class:	II	Design Wind Speed Without Ice:	93 mph
Exposure Category:	B	Design Wind Speed With Ice:	50 mph
Topographic Category:	1	Operational Wind Speed:	60 mph
Crest Height:	0.0 ft	Design Ice Thickness:	1.00 in

Seismic Parameters

Analysis Method:	Equivalent Modal Analysis & Equivalent Lateral Force Methods		
Site Class:	D - Stiff Soil		
Period Based on Rayleigh Method (sec):	2.05		
T _L (sec):	6	p:	1.3
S _s :	0.180	S ₁ :	0.064
F _a :	1.600	F _v :	2.400
S _{ds} :	0.192	S _{d1} :	0.102
		C _s :	0.033
		C _s Max:	0.033
		C _s Min:	0.030

Load Cases

1.2D + 1.6W	93 mph with No Ice
0.9D + 1.6W	93 mph with No Ice (Reduced DL)
1.2D + 1.0Di + 1.0Wi	50 mph with 1.00 in Radial Ice
(1.2 + 0.2S _{ds}) * DL + E ELFM	Seismic Equivalent Lateral Forces Method
(1.2 + 0.2S _{ds}) * DL + E EMAM	Seismic Equivalent Modal Analysis Method
(0.9 - 0.2S _{ds}) * DL + E ELFM	Seismic (Reduced DL) Equivalent Lateral Forces Method
(0.9 - 0.2S _{ds}) * DL + E EMAM	Seismic (Reduced DL) Equivalent Modal Analysis Method
1.0D + 1.0W	Serviceability 60 mph

Site Number: 411256

Code: ANSI/TIA-222-G

© 2007 - 2017 by ATC IP LLC. All rights reserved.

Site Name: CANTON CT, CT

Engineering Number: OAA715611_C3_01

11/2/2017 1:53:29 PM

Customer: VERIZON WIRELESS

Shaft Section Properties

Sect Info	Length (ft)	Thick (in)	Fy (ksi)	Slip			Bottom						Top							
				Joint Type	Joint Len (in)	Weight (lb)	Dia (in)	Elev (ft)	Area (in ²)	Ix (in ⁴)	W/t Ratio	D/t Ratio	Dia (in)	Elev (ft)	Area (in ²)	Ix (in ⁴)	W/t Ratio	D/t Ratio	Taper (in/ft)	
1-18	45.880	0.5000	65		0.00	11,096	51.00	0.00	80.14	25821.9	16.57	102.00	39.57	45.88	62.00	11959.3	12.54	79.14	0.249089	
2-18	44.210	0.4375	65	Slip	69.00	7,507	41.87	40.13	57.54	12486.2	15.47	95.72	30.86	84.34	42.25	4943.1	11.03	70.55	0.249089	
3-18	39.130	0.3125	65	Slip	56.00	3,628	32.65	79.67	32.08	4239.2	17.01	104.49	22.90	118.80	22.41	1445.5	11.51	73.30	0.249089	
4-18	24.780	0.1875	65	Slip	43.00	1,049	24.17	115.22	14.28	1037.8	21.32	128.93	18.00	140.00	10.60	425.1	15.52	96.01	0.249089	
Shaft Weight						23,279														

Discrete Appurtenance Properties

Attach Elev (ft)	Description	Qty	Weight (lb)	No Ice EPAa (sf)	Orientation Factor	Weight (lb)	Ice EPAa (sf)	Orientation Factor	Distance From Face (ft)	Vert Ecc (ft)
138.00	18' Omni	1	50.00	5.400	1.00	401.06	13.991	1.00	0.000	10.000
138.00	Stand-Off	1	75.00	2.500	1.00	123.41	4.229	1.00	0.000	0.000
130.00	Andrew SBNH-1D6565C (60.8	1	60.80	11.450	0.70	362.41	15.707	0.70	0.000	0.000
130.00	Andrew SBNHH-1D65A (33.5	1	33.50	5.880	0.69	310.38	8.602	0.69	0.000	0.000
130.00	CCI DTMABP7819VG12A	6	19.20	0.970	0.50	68.94	1.550	0.50	0.000	0.000
130.00	CCI HPA-65R-BUU-H8	2	68.00	12.980	0.67	478.56	16.130	0.67	0.000	0.000
130.00	CSS DUO1417-8686	3	20.30	5.790	0.70	254.17	7.166	0.70	0.000	0.000
130.00	Ericsson RRUS 32 (50.8 lbs)	3	50.80	2.690	0.50	171.55	3.665	0.50	0.000	0.000
130.00	Ericsson RRUS-11 (50 lbs.)	6	50.00	2.570	0.50	139.61	3.949	0.50	0.000	0.000
130.00	Flat Platform w/ Handrails	1	2000.00	42.400	1.00	3,868.17	69.968	1.00	0.000	0.000
130.00	Kathrein Scala 800-10121	3	44.10	5.160	0.68	194.78	7.929	0.68	0.000	0.000
130.00	KMW AM-X-CD-14-65-00T-	1	36.40	4.990	0.66	182.70	7.444	0.66	0.000	0.000
130.00	KMW AM-X-CD-17-65-00T-	1	59.50	11.310	0.68	404.01	13.503	0.68	0.000	0.000
130.00	Raycap DC6-48-60-0-8F	2	32.80	1.190	1.00	109.22	1.953	1.00	0.000	0.000
120.00	Amphenol Antel BXA-70063-	3	17.00	7.570	0.66	210.27	11.172	0.66	0.000	0.000
120.00	Antel LPA-80063/4CF	2	20.00	6.140	0.76	301.91	7.524	0.76	0.000	0.000
120.00	Antel LPA-80080/4CF	4	12.00	5.400	0.64	200.06	6.727	0.64	0.000	0.000
120.00	Commscope SBNHH-1D65B	6	50.70	8.170	0.69	331.40	9.908	0.69	0.000	0.000
120.00	Flat Platform w/ Handrails	1	2000.00	42.400	1.00	3,855.95	69.788	1.00	0.000	0.000
120.00	RFS DB-T1-6Z-8AB-0Z	2	44.00	4.800	0.67	350.07	5.962	0.67	0.000	0.000
120.00	Samsung 700/850MHz Dual	3	70.30	1.880	0.50	167.89	2.639	0.50	0.000	0.000
120.00	Samsung PCS/AWS Dual	3	84.40	1.880	0.50	191.67	2.639	0.50	0.000	0.000
120.00	VZW Unused Reserve:	1	1504.70	111.12	1.00	2,873.66	212.215	1.00	0.000	0.000
104.00	Commscope LNX-6515DS-	2	50.30	11.440	0.70	406.11	13.589	0.70	0.000	0.000
104.00	Ericsson KRY 112 489/2	2	15.40	0.650	0.50	51.37	1.029	0.50	0.000	0.000
104.00	Flat Low Profile Platform	1	1500.00	26.100	1.00	2,332.88	50.643	1.00	0.000	0.000
104.00	Kathrein Smart Bias Tee	2	3.30	0.090	0.50	14.28	0.313	0.50	0.000	0.000
104.00	RFS APXV18-209014-C	2	18.70	3.570	0.67	142.61	4.807	0.67	0.000	0.000
94.00	Alcatel-Lucent 1900 MHz	3	60.00	2.320	0.50	162.54	3.694	0.50	0.000	0.000
94.00	Alcatel-Lucent 800 MHz RRH	3	53.00	2.130	0.50	146.91	3.372	0.50	0.000	0.000
94.00	Alcatel-Lucent RRH2x50-08	3	52.90	1.700	0.50	150.02	2.417	0.50	0.000	0.000
94.00	Alcatel-Lucent TD-RRH8x20-	3	70.00	4.050	0.67	190.25	5.741	0.67	0.000	0.000
94.00	Commscope DT465B-2XR	3	58.00	9.100	0.69	363.95	10.828	0.69	0.000	0.000
94.00	Flat Low Profile Platform	1	1500.00	26.100	1.00	2,324.33	50.391	1.00	0.000	0.000
94.00	PCTEL GPS-TMG-HR-26N	1	0.60	0.090	0.50	6.76	0.319	0.50	0.000	0.000
94.00	RFS APXVSP18-C-A20	3	57.00	8.020	0.68	276.47	11.567	0.68	0.000	0.000
83.00	Flat Low Profile Platform	1	1500.00	26.100	1.00	2,314.40	50.098	1.00	0.000	0.000
83.00	Kathrein Scala 742 213	3	22.00	5.140	0.67	175.58	6.773	0.67	0.000	0.000
Totals		90	13572.30			35,076.44			Number of Loadings : 38	

Linear Appurtenance Properties

Elev From (ft)	Elev To (ft)	Qty	Description	Coax Diameter (in)	Coax Weight (lb/ft)	Projected Width Flat (in)	Exposed To Wind	Carrier
----------------	--------------	-----	-------------	--------------------	---------------------	---------------------------	-----------------	---------

Site Number: 411256

Code: ANSI/TIA-222-G

© 2007 - 2017 by ATC IP LLC. All rights reserved.

Site Name: CANTON CT, CT

Engineering Number:OAA715611_C3_01

11/2/2017 1:53:29 PM

Customer: VERIZON WIRELESS

0.00	138.00	2 7/8" Coax	1.09	0.33	N	0.00	N	Unknown
0.00	130.00	2 0.39" Fiber Trunk	0.39	0.06	N	0.00	N	AT&T Mobility
0.00	130.00	4 0.78" 8 AWG 6	0.78	0.59	N	0.00	N	AT&T Mobility
0.00	130.00	3 3" Conduit	3.50	7.58	N	0.00	N	AT&T Mobility
0.00	130.00	12 7/8" Coax	1.09	0.33	N	0.00	N	AT&T Mobility
0.00	120.00	16 1 5/8" Coax	1.98	0.82	N	0.00	N	Verizon
0.00	120.00	2 1 5/8" Fiber	1.63	1.61	N	0.00	N	Verizon
0.00	104.00	8 1 5/8" Coax	1.98	0.82	N	1.98	Y	T-Mobile
0.00	94.00	4 1 1/4" Hybriflex Cable	1.54	1.00	N	0.00	N	Sprint Nextel
0.00	94.00	1 1/2" Coax	0.63	0.15	N	0.00	N	Sprint Nextel

Site Number: 411256

Code: ANSI/TIA-222-G

© 2007 - 2017 by ATC IP LLC. All rights reserved.

Site Name: CANTON CT, CT

Engineering Number: OAA715611_C3_01

11/2/2017 1:53:29 PM

Customer: VERIZON WIRELESS

Segment Properties (Max Len : 5. ft)

Seg Top Elev (ft)	Description	Thick (in)	Flat Dia (in)	Area (in ²)	Ix (in ⁴)	W/t Ratio	D/t Ratio	F'y (ksi)	S (in ³)	Z (in ³)	Weight (lb)
0.00		0.5000	51.000	80.141	25,821.9	16.57	102.00	81.9	997.2	0.0	0.0
5.00		0.5000	49.755	78.164	23,958.2	16.14	99.51	82.4	948.4	0.0	1,346.7
10.00		0.5000	48.509	76.188	22,186.3	15.70	97.02	82.6	900.8	0.0	1,313.1
15.00		0.5000	47.264	74.211	20,504.1	15.26	94.53	82.6	854.5	0.0	1,279.4
20.00		0.5000	46.018	72.235	18,909.1	14.82	92.04	82.6	809.3	0.0	1,245.8
25.00		0.5000	44.773	70.258	17,399.0	14.38	89.55	82.6	765.4	0.0	1,212.2
30.00		0.5000	43.527	68.282	15,971.6	13.94	87.05	82.6	722.7	0.0	1,178.6
35.00		0.5000	42.282	66.305	14,624.4	13.50	84.56	82.6	681.2	0.0	1,144.9
40.00		0.5000	41.036	64.329	13,355.2	13.06	82.07	82.6	641.0	0.0	1,111.3
40.13	Bot - Section 2	0.5000	41.004	64.278	13,323.2	13.05	82.01	82.6	640.0	0.0	28.4
45.00		0.5000	39.791	62.353	12,161.7	12.62	79.58	82.6	602.0	0.0	1,988.9
45.88	Top - Section 1	0.4375	40.447	55.556	11,235.8	14.89	92.45	82.6	547.1	0.0	353.0
50.00		0.4375	39.421	54.131	10,393.2	14.48	90.10	82.6	519.3	0.0	768.9
55.00		0.4375	38.175	52.401	9,428.6	13.98	87.26	82.6	486.5	0.0	906.3
60.00		0.4375	36.930	50.672	8,525.5	13.47	84.41	82.6	454.7	0.0	876.8
65.00		0.4375	35.684	48.943	7,682.1	12.97	81.56	82.6	424.0	0.0	847.4
70.00		0.4375	34.439	47.213	6,896.2	12.47	78.72	82.6	394.4	0.0	818.0
75.00		0.4375	33.193	45.484	6,165.8	11.97	75.87	82.6	365.9	0.0	788.6
79.67	Bot - Section 3	0.4375	32.029	43.867	5,531.5	11.50	73.21	82.6	340.2	0.0	710.4
80.00		0.4375	31.948	43.754	5,488.9	11.47	73.02	82.6	338.4	0.0	84.3
83.00		0.4375	31.201	42.717	5,107.5	11.16	71.32	82.6	322.4	0.0	764.2
84.34	Top - Section 2	0.3125	31.492	30.925	3,798.3	16.36	100.77	82.2	237.6	0.0	335.5
85.00		0.3125	31.327	30.762	3,738.6	16.27	100.25	82.3	235.1	0.0	69.3
90.00		0.3125	30.082	29.527	3,306.0	15.56	96.26	82.6	216.5	0.0	512.9
94.00		0.3125	29.086	28.538	2,985.1	15.00	93.07	82.6	202.1	0.0	395.2
95.00		0.3125	28.837	28.291	2,908.2	14.86	92.28	82.6	198.6	0.0	96.7
100.0		0.3125	27.591	27.056	2,543.7	14.16	88.29	82.6	181.6	0.0	470.8
104.0		0.3125	26.595	26.068	2,275.0	13.60	85.10	82.6	168.5	0.0	361.5
105.0		0.3125	26.346	25.821	2,210.9	13.45	84.31	82.6	165.3	0.0	88.3
110.0		0.3125	25.100	24.585	1,908.5	12.75	80.32	82.6	149.8	0.0	428.8
115.0		0.3125	23.855	23.350	1,635.1	12.05	76.34	82.6	135.0	0.0	407.8
115.2	Bot - Section 4	0.3125	23.800	23.296	1,623.7	12.02	76.16	82.6	134.4	0.0	17.5
118.8	Top - Section 3	0.1875	23.282	13.744	926.2	20.48	124.17	77.3	78.4	0.0	449.5
120.0		0.1875	22.984	13.566	890.8	20.20	122.58	77.6	76.3	0.0	55.6
125.0		0.1875	21.739	12.825	752.6	19.03	115.94	79.0	68.2	0.0	224.5
130.0		0.1875	20.493	12.084	629.5	17.86	109.30	80.4	60.5	0.0	211.9
135.0		0.1875	19.248	11.343	520.6	16.69	102.66	81.8	53.3	0.0	199.3
138.0		0.1875	18.501	10.898	461.8	15.99	98.67	82.6	49.2	0.0	113.5
140.0		0.1875	18.003	10.602	425.1	15.52	96.01	82.6	46.5	0.0	73.2
23,278.9											

Site Number: 411256

Code: ANSI/TIA-222-G

© 2007 - 2017 by ATC IP LLC. All rights reserved.

Site Name: CANTON CT, CT

Engineering Number: OAA715611_C3_01

11/2/2017 1:53:29 PM

Customer: VERIZON WIRELESS

Load Case: 1.2D + 1.6W

93 mph with No Ice

23 Iterations

Gust Response Factor :1.10

Wind Importance Factor :1.00

Dead Load Factor :1.20

Wind Load Factor :1.60

Applied Segment Forces Summary

Seg Elev (ft)	Description	Shaft Forces		Discrete Forces			Linear Forces			Sum of Forces			
		Wind FX (lb)	Dead Load (lb)	Wind FX (lb)	Torsion MY (lb-ft)	Moment MZ (lb-ft)	Dead Load (lb)	Wind FX (lb)	Dead Load (lb)	Wind FX (lb)	Dead Load (lb)	Torsion MY (lb-ft)	Moment MZ (lb)
0.00		179.5	0.0					0.0	0.0	179.5	0.0	0.0	0.0
5.00		354.6	1,616.0					0.0	341.3	354.6	1,957.4	0.0	0.0
10.00		345.7	1,575.7					0.0	341.3	345.7	1,917.0	0.0	0.0
15.00		336.8	1,535.3					0.0	341.3	336.8	1,876.7	0.0	0.0
20.00		328.0	1,495.0					0.0	341.3	328.0	1,836.3	0.0	0.0
25.00		319.1	1,454.6					0.0	341.3	319.1	1,796.0	0.0	0.0
30.00		313.9	1,414.3					0.0	341.3	313.9	1,755.6	0.0	0.0
35.00		314.9	1,373.9					0.0	341.3	314.9	1,715.3	0.0	0.0
40.00		162.5	1,333.6					0.0	341.3	162.5	1,674.9	0.0	0.0
40.13	Bot - Section 2	162.6	34.1					0.0	8.9	162.6	43.0	0.0	0.0
45.00		187.1	2,386.7					0.0	332.5	187.1	2,719.1	0.0	0.0
45.88	Top - Section 1	162.8	423.6					0.0	60.1	162.8	483.7	0.0	0.0
50.00		296.5	922.6					0.0	281.3	296.5	1,203.9	0.0	0.0
55.00		323.6	1,087.5					0.0	341.3	323.6	1,428.9	0.0	0.0
60.00		321.0	1,052.2					0.0	341.3	321.0	1,393.5	0.0	0.0
65.00		317.3	1,016.9					0.0	341.3	317.3	1,358.2	0.0	0.0
70.00		312.8	981.6					0.0	341.3	312.8	1,322.9	0.0	0.0
75.00		297.7	946.3					0.0	341.3	297.7	1,287.6	0.0	0.0
79.67	Bot - Section 3	152.5	852.5					0.0	319.0	152.5	1,171.6	0.0	0.0
80.00		101.7	101.2					0.0	22.3	101.7	123.5	0.0	0.0
83.00	Appertunance(s)	132.2	917.1	1,192.1	0.0	0.0	1,879.2	0.0	204.8	1,324.3	3,001.1	0.0	0.0
84.34	Top - Section 2	60.5	402.6					0.0	91.5	60.5	494.1	0.0	0.0
85.00		168.6	83.1					0.0	45.1	168.6	128.2	0.0	0.0
90.00		264.9	615.4					0.0	341.3	264.9	956.8	0.0	0.0
94.00	Appertunance(s)	144.9	474.2	2,450.9	0.0	0.0	3,064.0	0.0	273.1	2,595.8	3,811.2	0.0	0.0
95.00		169.6	116.0					0.0	63.3	169.6	179.3	0.0	0.0
100.00		250.6	565.0					0.0	316.4	250.6	881.4	0.0	0.0
104.00	Appertunance(s)	136.6	433.8	1,603.2	0.0	0.0	2,010.5	0.0	253.2	1,739.8	2,697.5	0.0	0.0
105.00		159.1	105.9					0.0	55.4	159.1	161.4	0.0	0.0
110.00		259.5	514.6					0.0	277.1	259.5	791.6	0.0	0.0
115.00		132.8	489.3					0.0	277.1	132.8	766.4	0.0	0.0
115.22	Bot - Section 4	95.0	21.0					0.0	12.2	95.0	33.1	0.0	0.0
118.80	Top - Section 3	118.8	539.4					0.0	198.6	118.8	737.9	0.0	0.0
120.00	Appertunance(s)	148.5	66.7	8,346.1	0.0	0.0	5,400.0	0.0	66.3	8,494.6	5,533.0	0.0	0.0
125.00		233.1	269.4					0.0	179.0	233.1	448.5	0.0	0.0
130.00	Appertunance(s)	222.2	254.3	4,042.9	0.0	0.0	3,783.1	0.0	179.0	4,265.1	4,216.4	0.0	0.0
135.00		170.6	239.2					0.0	4.0	170.6	243.1	0.0	0.0
138.00	Appertunance(s)	102.6	136.2	321.3	0.0	2,209.7	150.0	0.0	2.4	423.9	288.6	0.0	0.0
140.00		40.3	87.8					0.0	0.0	40.3	87.8	0.0	0.0
Totals:										26,257.4	52,522.5	0.00	0.00

Site Number: 411256

Code: ANSI/TIA-222-G

© 2007 - 2017 by ATC IP LLC. All rights reserved.

Site Name: CANTON CT, CT

Engineering Number: OAA715611_C3_01

11/2/2017 1:53:31 PM

Customer: VERIZON WIRELESS

Load Case: 1.2D + 1.6W

93 mph with No Ice

23 Iterations

Gust Response Factor :1.10

Wind Importance Factor :1.00

Dead Load Factor :1.20

Wind Load Factor :1.60

Calculated Forces

Seg Elev (ft)	Pu FY (-) (kips)	Vu FX (-) (kips)	Tu MY (ft-kips)	Mu MZ (ft-kips)	Mu MX (ft-kips)	Resultant Moment (ft-kips)	phi Pn (kips)	phi Vn (kips)	phi Tn (ft-kips)	phi Mn (ft-kips)	Total Deflect (in)	Rotation (deg)	Ratio
0.00	-52.49	-26.15	0.00	-2,713.40	0.00	2,713.40	5,907.57	2,953.79	12,233.7	6,125.97	0.00	0.00	0.452
5.00	-50.46	-25.92	0.00	-2,582.67	0.00	2,582.67	5,798.22	2,899.11	11,708.2	5,862.84	0.08	-0.15	0.449
10.00	-48.48	-25.69	0.00	-2,453.08	0.00	2,453.08	5,660.37	2,830.18	11,137.9	5,577.27	0.31	-0.30	0.448
15.00	-46.54	-25.47	0.00	-2,324.61	0.00	2,324.61	5,513.53	2,756.76	10,564.7	5,290.20	0.70	-0.45	0.448
20.00	-44.64	-25.25	0.00	-2,197.26	0.00	2,197.26	5,366.68	2,683.34	10,006.5	5,010.72	1.26	-0.61	0.447
25.00	-42.77	-25.03	0.00	-2,071.02	0.00	2,071.02	5,219.84	2,609.92	9,463.58	4,738.82	1.98	-0.77	0.445
30.00	-40.95	-24.81	0.00	-1,945.86	0.00	1,945.86	5,073.00	2,536.50	8,935.73	4,474.51	2.87	-0.93	0.443
35.00	-39.17	-24.58	0.00	-1,821.82	0.00	1,821.82	4,926.16	2,463.08	8,423.04	4,217.78	3.93	-1.10	0.440
40.00	-37.46	-24.44	0.00	-1,698.92	0.00	1,698.92	4,779.32	2,389.66	7,925.49	3,968.63	5.17	-1.27	0.436
40.13	-37.38	-24.33	0.00	-1,695.74	0.00	1,695.74	4,775.51	2,387.75	7,912.75	3,962.26	5.21	-1.27	0.436
45.00	-34.63	-24.14	0.00	-1,577.24	0.00	1,577.24	4,632.48	2,316.24	7,443.09	3,727.08	6.60	-1.44	0.431
45.88	-34.11	-24.02	0.00	-1,555.99	0.00	1,555.99	4,127.52	2,063.76	6,764.96	3,387.51	6.87	-1.48	0.468
50.00	-32.84	-23.79	0.00	-1,457.02	0.00	1,457.02	4,021.65	2,010.83	6,420.54	3,215.04	8.21	-1.62	0.461
55.00	-31.35	-23.53	0.00	-1,338.07	0.00	1,338.07	3,893.17	1,946.58	6,014.64	3,011.79	10.01	-1.82	0.452
60.00	-29.89	-23.26	0.00	-1,220.42	0.00	1,220.42	3,764.68	1,882.34	5,621.99	2,815.17	12.01	-2.01	0.442
65.00	-28.46	-22.99	0.00	-1,104.11	0.00	1,104.11	3,636.20	1,818.10	5,242.60	2,625.19	14.22	-2.20	0.429
70.00	-27.08	-22.72	0.00	-989.14	0.00	989.14	3,507.71	1,753.86	4,876.46	2,441.85	16.63	-2.40	0.413
75.00	-25.73	-22.45	0.00	-875.55	0.00	875.55	3,379.23	1,689.61	4,523.57	2,265.15	19.25	-2.59	0.394
79.67	-24.53	-22.28	0.00	-770.64	0.00	770.64	3,259.13	1,629.57	4,205.72	2,105.99	21.87	-2.77	0.374
80.00	-24.39	-22.20	0.00	-763.36	0.00	763.36	3,250.74	1,625.37	4,183.94	2,095.08	22.06	-2.78	0.372
83.00	-21.43	-20.76	0.00	-696.76	0.00	696.76	3,173.65	1,586.82	3,986.52	1,996.22	23.84	-2.89	0.356
84.34	-20.92	-20.69	0.00	-668.94	0.00	668.94	2,286.71	1,143.35	2,923.37	1,463.86	24.66	-2.94	0.466
85.00	-20.76	-20.56	0.00	-655.29	0.00	655.29	2,277.67	1,138.84	2,896.31	1,450.31	25.07	-2.97	0.461
90.00	-19.74	-20.32	0.00	-552.48	0.00	552.48	2,193.67	1,096.84	2,676.37	1,340.17	28.30	-3.20	0.422
94.00	-16.05	-17.53	0.00	-471.23	0.00	471.23	2,120.25	1,060.13	2,499.32	1,251.52	31.06	-3.37	0.384
95.00	-15.85	-17.39	0.00	-453.69	0.00	453.69	2,101.90	1,050.95	2,456.00	1,229.83	31.77	-3.42	0.377
100.00	-14.93	-17.13	0.00	-366.74	0.00	366.74	2,010.12	1,005.06	2,245.10	1,124.22	35.46	-3.62	0.334
104.00	-12.33	-15.24	0.00	-298.22	0.00	298.22	1,936.70	968.35	2,083.19	1,043.15	38.55	-3.77	0.292
105.00	-12.15	-15.09	0.00	-282.98	0.00	282.98	1,918.35	959.17	2,043.66	1,023.35	39.35	-3.80	0.283
110.00	-11.34	-14.81	0.00	-207.52	0.00	207.52	1,826.57	913.29	1,851.70	927.22	43.42	-3.96	0.230
115.00	-10.57	-14.63	0.00	-133.48	0.00	133.48	1,734.80	867.40	1,669.20	835.84	47.64	-4.09	0.166
115.22	-10.53	-14.54	0.00	-130.26	0.00	130.26	1,730.76	865.38	1,661.38	831.93	47.82	-4.09	0.163
118.80	-9.80	-14.38	0.00	-78.15	0.00	78.15	956.25	478.12	907.22	454.29	50.92	-4.16	0.183
120.00	-4.89	-5.51	0.00	-60.94	0.00	60.94	947.93	473.97	887.63	444.47	51.97	-4.18	0.142
125.00	-4.46	-5.25	0.00	-33.41	0.00	33.41	912.05	456.02	806.99	404.09	56.38	-4.25	0.088
130.00	-0.57	-0.68	0.00	-7.17	0.00	7.17	874.32	437.16	728.52	364.80	60.85	-4.29	0.020
135.00	-0.34	-0.49	0.00	-3.78	0.00	3.78	834.76	417.38	652.50	326.73	65.35	-4.30	0.012
138.00	-0.08	-0.05	0.00	-0.09	0.00	0.09	809.68	404.84	607.85	304.38	68.05	-4.31	0.000
140.00	0.00	-0.04	0.00	0.00	0.00	0.00	787.66	393.83	575.06	287.96	69.85	-4.31	0.000

Site Number: 411256

Code: ANSI/TIA-222-G

© 2007 - 2017 by ATC IP LLC. All rights reserved.

Site Name: CANTON CT, CT

Engineering Number:OAA715611_C3_01

11/2/2017 1:53:31 PM

Customer: VERIZON WIRELESS

Load Case: 0.9D + 1.6W

93 mph with No Ice (Reduced DL)

23 Iterations

Gust Response Factor :1.10

Wind Importance Factor :1.00

Dead Load Factor :0.90

Wind Load Factor :1.60

Applied Segment Forces Summary

Seg Elev (ft)	Description	Shaft Forces		Discrete Forces			Linear Forces			Sum of Forces			
		Wind FX (lb)	Dead Load (lb)	Wind FX (lb)	Torsion MY (lb-ft)	Moment MZ (lb-ft)	Dead Load (lb)	Wind FX (lb)	Dead Load (lb)	Wind FX (lb)	Dead Load (lb)	Torsion MY (lb-ft)	Moment MZ (lb)
0.00		179.5	0.0					0.0	0.0	179.5	0.0	0.0	0.0
5.00		354.6	1,212.0					0.0	256.0	354.6	1,468.0	0.0	0.0
10.00		345.7	1,181.8					0.0	256.0	345.7	1,437.8	0.0	0.0
15.00		336.8	1,151.5					0.0	256.0	336.8	1,407.5	0.0	0.0
20.00		328.0	1,121.2					0.0	256.0	328.0	1,377.2	0.0	0.0
25.00		319.1	1,091.0					0.0	256.0	319.1	1,347.0	0.0	0.0
30.00		313.9	1,060.7					0.0	256.0	313.9	1,316.7	0.0	0.0
35.00		314.9	1,030.4					0.0	256.0	314.9	1,286.4	0.0	0.0
40.00		162.5	1,000.2					0.0	256.0	162.5	1,256.2	0.0	0.0
40.13	Bot - Section 2	162.6	25.6					0.0	6.7	162.6	32.3	0.0	0.0
45.00		187.1	1,790.0					0.0	249.3	187.1	2,039.3	0.0	0.0
45.88	Top - Section 1	162.8	317.7					0.0	45.1	162.8	362.8	0.0	0.0
50.00		296.5	692.0					0.0	210.9	296.5	902.9	0.0	0.0
55.00		323.6	815.6					0.0	256.0	323.6	1,071.6	0.0	0.0
60.00		321.0	789.2					0.0	256.0	321.0	1,045.2	0.0	0.0
65.00		317.3	762.7					0.0	256.0	317.3	1,018.7	0.0	0.0
70.00		312.8	736.2					0.0	256.0	312.8	992.2	0.0	0.0
75.00		297.7	709.7					0.0	256.0	297.7	965.7	0.0	0.0
79.67	Bot - Section 3	152.5	639.4					0.0	239.3	152.5	878.7	0.0	0.0
80.00		101.7	75.9					0.0	16.7	101.7	92.6	0.0	0.0
83.00	Appertunance(s)	132.2	687.8	1,192.1	0.0	0.0	1,409.4	0.0	153.6	1,324.3	2,250.8	0.0	0.0
84.34	Top - Section 2	60.5	301.9					0.0	68.6	60.5	370.5	0.0	0.0
85.00		168.6	62.3					0.0	33.8	168.6	96.1	0.0	0.0
90.00		264.9	461.6					0.0	256.0	264.9	717.6	0.0	0.0
94.00	Appertunance(s)	144.9	355.6	2,450.9	0.0	0.0	2,298.0	0.0	204.8	2,595.8	2,858.4	0.0	0.0
95.00		169.6	87.0					0.0	47.5	169.6	134.5	0.0	0.0
100.00		250.6	423.8					0.0	237.3	250.6	661.1	0.0	0.0
104.00	Appertunance(s)	136.6	325.4	1,603.2	0.0	0.0	1,507.9	0.0	189.9	1,739.8	2,023.1	0.0	0.0
105.00		159.1	79.5					0.0	41.6	159.1	121.0	0.0	0.0
110.00		259.5	385.9					0.0	207.8	259.5	593.7	0.0	0.0
115.00		132.8	367.0					0.0	207.8	132.8	574.8	0.0	0.0
115.22	Bot - Section 4	95.0	15.7					0.0	9.1	95.0	24.9	0.0	0.0
118.80	Top - Section 3	118.8	404.5					0.0	148.9	118.8	553.5	0.0	0.0
120.00	Appertunance(s)	148.5	50.0	8,346.1	0.0	0.0	4,050.0	0.0	49.7	8,494.6	4,149.8	0.0	0.0
125.00		233.1	202.1					0.0	134.3	233.1	336.3	0.0	0.0
130.00	Appertunance(s)	222.2	190.7	4,042.9	0.0	0.0	2,837.3	0.0	134.3	4,265.1	3,162.3	0.0	0.0
135.00		170.6	179.4					0.0	3.0	170.6	182.3	0.0	0.0
138.00	Appertunance(s)	102.6	102.2	321.3	0.0	2,209.7	112.5	0.0	1.8	423.9	216.5	0.0	0.0
140.00		40.3	65.8					0.0	0.0	40.3	65.8	0.0	0.0
Totals:										26,257.4	39,391.9	0.00	0.00

Site Number: 411256

Code: ANSI/TIA-222-G

© 2007 - 2017 by ATC IP LLC. All rights reserved.

Site Name: CANTON CT, CT

Engineering Number: OAA715611_C3_01

11/2/2017 1:53:33 PM

Customer: VERIZON WIRELESS

Load Case: 0.9D + 1.6W

93 mph with No Ice (Reduced DL)

23 Iterations

Gust Response Factor :1.10

Wind Importance Factor :1.00

Dead Load Factor :0.90

Wind Load Factor :1.60

Calculated Forces

Seg Elev (ft)	Pu FY (-) (kips)	Vu FX (-) (kips)	Tu MY (ft-kips)	Mu MZ (ft-kips)	Mu MX (ft-kips)	Resultant Moment (ft-kips)	phi Pn (kips)	phi Vn (kips)	phi Tn (ft-kips)	phi Mn (ft-kips)	Total Deflect (in)	Rotation (deg)	Ratio
0.00	-39.36	-26.13	0.00	-2,685.64	0.00	2,685.64	5,907.57	2,953.79	12,233.7	6,125.97	0.00	0.00	0.445
5.00	-37.82	-25.87	0.00	-2,555.00	0.00	2,555.00	5,798.22	2,899.11	11,708.2	5,862.84	0.08	-0.14	0.442
10.00	-36.32	-25.61	0.00	-2,425.66	0.00	2,425.66	5,660.37	2,830.18	11,137.9	5,577.27	0.31	-0.29	0.441
15.00	-34.85	-25.36	0.00	-2,297.60	0.00	2,297.60	5,513.53	2,756.76	10,564.7	5,290.20	0.70	-0.44	0.441
20.00	-33.41	-25.11	0.00	-2,170.81	0.00	2,170.81	5,366.68	2,683.34	10,006.5	5,010.72	1.24	-0.60	0.440
25.00	-31.99	-24.87	0.00	-2,045.26	0.00	2,045.26	5,219.84	2,609.92	9,463.58	4,738.82	1.96	-0.76	0.438
30.00	-30.61	-24.62	0.00	-1,920.93	0.00	1,920.93	5,073.00	2,536.50	8,935.73	4,474.51	2.84	-0.92	0.435
35.00	-29.26	-24.37	0.00	-1,797.83	0.00	1,797.83	4,926.16	2,463.08	8,423.04	4,217.78	3.89	-1.08	0.432
40.00	-27.97	-24.22	0.00	-1,676.00	0.00	1,676.00	4,779.32	2,389.66	7,925.49	3,968.63	5.11	-1.25	0.428
40.13	-27.90	-24.10	0.00	-1,672.85	0.00	1,672.85	4,775.51	2,387.75	7,912.75	3,962.26	5.15	-1.26	0.428
45.00	-25.83	-23.91	0.00	-1,555.48	0.00	1,555.48	4,632.48	2,316.24	7,443.09	3,727.08	6.52	-1.43	0.423
45.88	-25.43	-23.78	0.00	-1,534.44	0.00	1,534.44	4,127.52	2,063.76	6,764.96	3,387.51	6.79	-1.46	0.459
50.00	-24.47	-23.53	0.00	-1,436.47	0.00	1,436.47	4,021.65	2,010.83	6,420.54	3,215.04	8.11	-1.60	0.453
55.00	-23.33	-23.25	0.00	-1,318.82	0.00	1,318.82	3,893.17	1,946.58	6,014.64	3,011.79	9.89	-1.79	0.444
60.00	-22.22	-22.97	0.00	-1,202.57	0.00	1,202.57	3,764.68	1,882.34	5,621.99	2,815.17	11.87	-1.98	0.433
65.00	-21.14	-22.69	0.00	-1,087.72	0.00	1,087.72	3,636.20	1,818.10	5,242.60	2,625.19	14.05	-2.17	0.420
70.00	-20.09	-22.40	0.00	-974.28	0.00	974.28	3,507.71	1,753.86	4,876.46	2,441.85	16.43	-2.36	0.405
75.00	-19.06	-22.12	0.00	-862.27	0.00	862.27	3,379.23	1,689.61	4,523.57	2,265.15	19.01	-2.55	0.386
79.67	-18.16	-21.96	0.00	-758.88	0.00	758.88	3,259.13	1,629.57	4,205.72	2,105.99	21.60	-2.73	0.366
80.00	-18.05	-21.87	0.00	-751.71	0.00	751.71	3,250.74	1,625.37	4,183.94	2,095.08	21.78	-2.74	0.365
83.00	-15.83	-20.46	0.00	-686.09	0.00	686.09	3,173.65	1,586.82	3,986.52	1,996.22	23.54	-2.85	0.349
84.34	-15.45	-20.39	0.00	-658.67	0.00	658.67	2,286.71	1,143.35	2,923.37	1,463.86	24.35	-2.90	0.457
85.00	-15.32	-20.26	0.00	-645.21	0.00	645.21	2,277.67	1,138.84	2,896.31	1,450.31	24.75	-2.93	0.452
90.00	-14.55	-20.00	0.00	-543.93	0.00	543.93	2,193.67	1,096.84	2,676.37	1,340.17	27.94	-3.15	0.413
94.00	-11.81	-17.27	0.00	-463.91	0.00	463.91	2,120.25	1,060.13	2,499.32	1,251.52	30.66	-3.33	0.377
95.00	-11.65	-17.12	0.00	-446.64	0.00	446.64	2,101.90	1,050.95	2,456.00	1,229.83	31.36	-3.37	0.369
100.00	-10.95	-16.86	0.00	-361.04	0.00	361.04	2,010.12	1,005.06	2,245.10	1,124.22	35.00	-3.57	0.327
104.00	-9.02	-15.01	0.00	-293.59	0.00	293.59	1,936.70	968.35	2,083.19	1,043.15	38.05	-3.72	0.286
105.00	-8.89	-14.86	0.00	-278.58	0.00	278.58	1,918.35	959.17	2,043.66	1,023.35	38.83	-3.75	0.277
110.00	-8.28	-14.58	0.00	-204.27	0.00	204.27	1,826.57	913.29	1,851.70	927.22	42.85	-3.91	0.225
115.00	-7.70	-14.42	0.00	-131.36	0.00	131.36	1,734.80	867.40	1,669.20	835.84	47.01	-4.03	0.162
115.22	-7.67	-14.33	0.00	-128.19	0.00	128.19	1,730.76	865.38	1,661.38	831.93	47.19	-4.04	0.159
118.80	-7.12	-14.17	0.00	-76.85	0.00	76.85	956.25	478.12	907.22	454.29	50.25	-4.10	0.177
120.00	-3.58	-5.41	0.00	-59.89	0.00	59.89	947.93	473.97	887.63	444.47	51.28	-4.12	0.139
125.00	-3.26	-5.15	0.00	-32.85	0.00	32.85	912.05	456.02	806.99	404.09	55.63	-4.19	0.085
130.00	-0.42	-0.67	0.00	-7.09	0.00	7.09	874.32	437.16	728.52	364.80	60.04	-4.23	0.020
135.00	-0.25	-0.48	0.00	-3.75	0.00	3.75	834.76	417.38	652.50	326.73	64.47	-4.24	0.012
138.00	-0.06	-0.05	0.00	-0.09	0.00	0.09	809.68	404.84	607.85	304.38	67.13	-4.25	0.000
140.00	0.00	-0.04	0.00	0.00	0.00	0.00	787.66	393.83	575.06	287.96	68.91	-4.25	0.000

Site Number: 411256

Code: ANSI/TIA-222-G

© 2007 - 2017 by ATC IP LLC. All rights reserved.

Site Name: CANTON CT, CT

Engineering Number: OAA715611_C3_01

11/2/2017 1:53:33 PM

Customer: VERIZON WIRELESS

Load Case: 1.2D + 1.0Di + 1.0Wi

50 mph with 1.00 in Radial Ice

23 Iterations

Gust Response Factor :1.10

Ice Dead Load Factor :1.00

Wind Importance Factor :1.00

Dead Load Factor :1.20

Ice Importance Factor :1.00

Wind Load Factor :1.00

Applied Segment Forces Summary

Seg Elev (ft)	Description	Shaft Forces		Discrete Forces			Linear Forces			Sum of Forces			
		Wind FX (lb)	Dead Load (lb)	Wind FX (lb)	Torsion MY (lb-ft)	Moment MZ (lb-ft)	Dead Load (lb)	Wind FX (lb)	Dead Load (lb)	Wind FX (lb)	Dead Load (lb)	Torsion MY (lb-ft)	Moment MZ (lb)
0.00		63.5	0.0					0.0	0.0	63.5	0.0	0.0	0.0
5.00		125.9	2,112.5					0.0	464.2	125.9	2,576.7	0.0	0.0
10.00		123.6	2,118.3					0.0	478.8	123.6	2,597.1	0.0	0.0
15.00		121.0	2,093.2					0.0	486.4	121.0	2,579.6	0.0	0.0
20.00		118.3	2,058.0					0.0	491.6	118.3	2,549.6	0.0	0.0
25.00		115.5	2,017.5					0.0	495.6	115.5	2,513.2	0.0	0.0
30.00		114.1	1,973.8					0.0	499.0	114.1	2,472.7	0.0	0.0
35.00		114.9	1,927.6					0.0	501.8	114.9	2,429.4	0.0	0.0
40.00		59.4	1,879.8					0.0	504.3	59.4	2,384.1	0.0	0.0
40.13	Bot - Section 2	59.5	48.4					0.0	13.1	59.5	61.6	0.0	0.0
45.00		68.5	2,921.2					0.0	493.3	68.5	3,414.5	0.0	0.0
45.88	Top - Section 1	59.8	520.4					0.0	89.4	59.8	609.7	0.0	0.0
50.00		109.2	1,367.2					0.0	419.1	109.2	1,786.3	0.0	0.0
55.00		119.7	1,615.8					0.0	510.3	119.7	2,126.1	0.0	0.0
60.00		119.2	1,569.1					0.0	512.0	119.2	2,081.0	0.0	0.0
65.00		118.3	1,521.7					0.0	513.5	118.3	2,035.2	0.0	0.0
70.00		117.2	1,473.7					0.0	515.0	117.2	1,988.7	0.0	0.0
75.00		112.0	1,425.3					0.0	516.3	112.0	1,941.6	0.0	0.0
79.67	Bot - Section 3	57.6	1,288.5					0.0	483.7	57.6	1,772.2	0.0	0.0
80.00		38.5	132.2					0.0	33.9	38.5	166.1	0.0	0.0
83.00	Appertunance(s)	50.0	1,196.8	382.2	0.0	0.0	2,954.3	0.0	311.1	432.2	4,462.3	0.0	0.0
84.34	Top - Section 2	22.9	526.6					0.0	139.1	22.9	665.8	0.0	0.0
85.00		64.1	144.0					0.0	68.5	64.1	212.6	0.0	0.0
90.00		101.1	1,061.1					0.0	519.9	101.1	1,581.0	0.0	0.0
94.00	Appertunance(s)	55.5	821.6	700.9	0.0	0.0	6,148.5	0.0	416.7	756.4	7,386.8	0.0	0.0
95.00		65.3	202.4					0.0	99.3	65.3	301.7	0.0	0.0
100.00		96.8	981.0					0.0	497.2	96.8	1,478.2	0.0	0.0
104.00	Appertunance(s)	53.0	757.1	481.8	0.0	0.0	3,696.7	0.0	398.5	534.8	4,852.3	0.0	0.0
105.00		62.1	186.3					0.0	55.4	62.1	241.7	0.0	0.0
110.00		101.9	899.8					0.0	277.1	101.9	1,176.9	0.0	0.0
115.00		52.4	858.9					0.0	277.1	52.4	1,136.0	0.0	0.0
115.22	Bot - Section 4	37.6	37.2					0.0	12.2	37.6	49.4	0.0	0.0
118.80	Top - Section 3	47.1	799.5					0.0	198.6	47.1	998.1	0.0	0.0
120.00	Appertunance(s)	59.4	152.8	2,525.9	0.0	0.0	14,358.9	0.0	66.3	2,585.3	14,578.0	0.0	0.0
125.00		93.8	612.2					0.0	179.0	93.8	791.2	0.0	0.0
130.00	Appertunance(s)	90.4	580.7	1,084.9	0.0	0.0	9,247.6	0.0	179.0	1,175.3	10,007.3	0.0	0.0
135.00		70.1	549.0					0.0	4.0	70.1	552.9	0.0	0.0
138.00	Appertunance(s)	42.6	316.3	134.1	0.0	1,034.3	405.8	0.0	2.4	176.6	724.4	0.0	0.0
140.00		16.8	205.2					0.0	0.0	16.8	205.2	0.0	0.0
Totals:										8,428.75	89,487.0	0.00	0.00

Site Number: 411256
 Site Name: CANTON CT, CT
 Customer: VERIZON WIRELESS

Code: ANSI/TIA-222-G
 Engineering Number: OAA715611_C3_01

© 2007 - 2017 by ATC IP LLC. All rights reserved.
 11/2/2017 1:53:35 PM

Load Case: 1.2D + 1.0Di + 1.0Wi	50 mph with 1.00 in Radial Ice	23 Iterations
Gust Response Factor :1.10	Ice Dead Load Factor :1.00	Wind Importance Factor :1.00
Dead Load Factor :1.20		Ice Importance Factor :1.00
Wind Load Factor :1.00		

Calculated Forces

Seg Elev (ft)	Pu FY (-) (kips)	Vu FX (-) (kips)	Tu MY (ft-kips)	Mu MZ (ft-kips)	Mu MX (ft-kips)	Resultant Moment (ft-kips)	phi Pn (kips)	phi Vn (kips)	phi Tn (ft-kips)	phi Mn (ft-kips)	Total Deflect (in)	Rotation (deg)	Ratio
0.00	-89.48	-8.40	0.00	-890.31	0.00	890.31	5,907.57	2,953.79	12,233.7	6,125.97	0.00	0.00	0.160
5.00	-86.90	-8.35	0.00	-848.30	0.00	848.30	5,798.22	2,899.11	11,708.2	5,862.84	0.03	-0.05	0.160
10.00	-84.30	-8.30	0.00	-806.55	0.00	806.55	5,660.37	2,830.18	11,137.9	5,577.27	0.10	-0.10	0.160
15.00	-81.71	-8.24	0.00	-765.07	0.00	765.07	5,513.53	2,756.76	10,564.7	5,290.20	0.23	-0.15	0.159
20.00	-79.15	-8.19	0.00	-723.86	0.00	723.86	5,366.68	2,683.34	10,006.5	5,010.72	0.41	-0.20	0.159
25.00	-76.63	-8.14	0.00	-682.92	0.00	682.92	5,219.84	2,609.92	9,463.58	4,738.82	0.65	-0.25	0.159
30.00	-74.15	-8.08	0.00	-642.24	0.00	642.24	5,073.00	2,536.50	8,935.73	4,474.51	0.94	-0.31	0.158
35.00	-71.72	-8.02	0.00	-601.85	0.00	601.85	4,926.16	2,463.08	8,423.04	4,217.78	1.29	-0.36	0.157
40.00	-69.33	-7.98	0.00	-561.74	0.00	561.74	4,779.32	2,389.66	7,925.49	3,968.63	1.70	-0.42	0.156
40.13	-69.26	-7.96	0.00	-560.71	0.00	560.71	4,775.51	2,387.75	7,912.75	3,962.26	1.71	-0.42	0.156
45.00	-65.84	-7.90	0.00	-521.96	0.00	521.96	4,632.48	2,316.24	7,443.09	3,727.08	2.17	-0.48	0.154
45.88	-65.23	-7.87	0.00	-515.01	0.00	515.01	4,127.52	2,063.76	6,764.96	3,387.51	2.26	-0.49	0.168
50.00	-63.44	-7.80	0.00	-482.60	0.00	482.60	4,021.65	2,010.83	6,420.54	3,215.04	2.70	-0.54	0.166
55.00	-61.30	-7.73	0.00	-443.58	0.00	443.58	3,893.17	1,946.58	6,014.64	3,011.79	3.30	-0.60	0.163
60.00	-59.22	-7.66	0.00	-404.92	0.00	404.92	3,764.68	1,882.34	5,621.99	2,815.17	3.96	-0.66	0.160
65.00	-57.17	-7.58	0.00	-366.64	0.00	366.64	3,636.20	1,818.10	5,242.60	2,625.19	4.69	-0.73	0.155
70.00	-55.18	-7.50	0.00	-328.75	0.00	328.75	3,507.71	1,753.86	4,876.46	2,441.85	5.48	-0.79	0.150
75.00	-53.23	-7.41	0.00	-291.27	0.00	291.27	3,379.23	1,689.61	4,523.57	2,265.15	6.35	-0.86	0.144
79.67	-51.46	-7.36	0.00	-256.63	0.00	256.63	3,259.13	1,629.57	4,205.72	2,105.99	7.22	-0.91	0.138
80.00	-51.29	-7.33	0.00	-254.22	0.00	254.22	3,250.74	1,625.37	4,183.94	2,095.08	7.28	-0.92	0.137
83.00	-46.83	-6.85	0.00	-232.22	0.00	232.22	3,173.65	1,586.82	3,986.52	1,996.22	7.87	-0.96	0.131
84.34	-46.16	-6.83	0.00	-223.04	0.00	223.04	2,286.71	1,143.35	2,923.37	1,463.86	8.14	-0.97	0.173
85.00	-45.95	-6.79	0.00	-218.54	0.00	218.54	2,277.67	1,138.84	2,896.31	1,450.31	8.27	-0.98	0.171
90.00	-44.36	-6.72	0.00	-184.57	0.00	184.57	2,193.67	1,096.84	2,676.37	1,340.17	9.35	-1.06	0.158
94.00	-36.99	-5.84	0.00	-157.70	0.00	157.70	2,120.25	1,060.13	2,499.32	1,251.52	10.26	-1.12	0.143
95.00	-36.68	-5.80	0.00	-151.85	0.00	151.85	2,101.90	1,050.95	2,456.00	1,229.83	10.49	-1.13	0.141
100.00	-35.20	-5.71	0.00	-122.86	0.00	122.86	2,010.12	1,005.06	2,245.10	1,124.22	11.72	-1.20	0.127
104.00	-30.36	-5.09	0.00	-100.02	0.00	100.02	1,936.70	968.35	2,083.19	1,043.15	12.74	-1.25	0.112
105.00	-30.11	-5.04	0.00	-94.94	0.00	94.94	1,918.35	959.17	2,043.66	1,023.35	13.01	-1.26	0.108
110.00	-28.94	-4.93	0.00	-69.76	0.00	69.76	1,826.57	913.29	1,851.70	927.22	14.36	-1.31	0.091
115.00	-27.80	-4.86	0.00	-45.09	0.00	45.09	1,734.80	867.40	1,669.20	835.84	15.76	-1.36	0.070
115.22	-27.75	-4.83	0.00	-44.02	0.00	44.02	1,730.76	865.38	1,661.38	831.93	15.82	-1.36	0.069
118.80	-26.75	-4.77	0.00	-26.71	0.00	26.71	956.25	478.12	907.22	454.29	16.85	-1.38	0.087
120.00	-12.24	-1.83	0.00	-21.01	0.00	21.01	947.93	473.97	887.63	444.47	17.20	-1.39	0.060
125.00	-11.45	-1.72	0.00	-11.85	0.00	11.85	912.05	456.02	806.99	404.09	18.67	-1.41	0.042
130.00	-1.48	-0.30	0.00	-3.23	0.00	3.23	874.32	437.16	728.52	364.80	20.16	-1.43	0.011
135.00	-0.92	-0.22	0.00	-1.73	0.00	1.73	834.76	417.38	652.50	326.73	21.65	-1.43	0.006
138.00	-0.20	-0.02	0.00	-0.04	0.00	0.04	809.68	404.84	607.85	304.38	22.56	-1.44	0.000
140.00	0.00	-0.02	0.00	0.00	0.00	0.00	787.66	393.83	575.06	287.96	23.16	-1.44	0.000

Site Number: 411256

Code: ANSI/TIA-222-G © 2007 - 2017 by ATC IP LLC. All rights reserved.

Site Name: CANTON CT, CT

Engineering Number: OAA715611_C3_01

11/2/2017 1:53:35 PM

Customer: VERIZON WIRELESS

Load Case: 1.0D + 1.0W

Serviceability 60 mph

22 Iterations

Gust Response Factor :1.10

Wind Importance Factor :1.00

Dead Load Factor :1.00

Wind Load Factor :1.00

Applied Segment Forces Summary

Seg Elev (ft)	Description	Shaft Forces		Discrete Forces			Linear Forces			Sum of Forces			
		Wind FX (lb)	Dead Load (lb)	Wind FX (lb)	Torsion MY (lb-ft)	Moment MZ (lb-ft)	Dead Load (lb)	Wind FX (lb)	Dead Load (lb)	Wind FX (lb)	Dead Load (lb)	Torsion MY (lb-ft)	Moment MZ (lb)
0.00		46.7	0.0					0.0	0.0	46.7	0.0	0.0	0.0
5.00		92.2	1,346.7					0.0	284.4	92.2	1,631.1	0.0	0.0
10.00		89.9	1,313.1					0.0	284.4	89.9	1,597.5	0.0	0.0
15.00		87.6	1,279.4					0.0	284.4	87.6	1,563.9	0.0	0.0
20.00		85.3	1,245.8					0.0	284.4	85.3	1,530.3	0.0	0.0
25.00		83.0	1,212.2					0.0	284.4	83.0	1,496.6	0.0	0.0
30.00		81.7	1,178.6					0.0	284.4	81.7	1,463.0	0.0	0.0
35.00		81.9	1,144.9					0.0	284.4	81.9	1,429.4	0.0	0.0
40.00		42.3	1,111.3					0.0	284.4	42.3	1,395.7	0.0	0.0
40.13	Bot - Section 2	42.3	28.4					0.0	7.4	42.3	35.8	0.0	0.0
45.00		48.7	1,988.9					0.0	277.1	48.7	2,265.9	0.0	0.0
45.88	Top - Section 1	42.4	353.0					0.0	50.1	42.4	403.1	0.0	0.0
50.00		77.1	768.9					0.0	234.4	77.1	1,003.3	0.0	0.0
55.00		84.2	906.3					0.0	284.4	84.2	1,190.7	0.0	0.0
60.00		83.5	876.8					0.0	284.4	83.5	1,161.3	0.0	0.0
65.00		82.6	847.4					0.0	284.4	82.6	1,131.9	0.0	0.0
70.00		81.4	818.0					0.0	284.4	81.4	1,102.4	0.0	0.0
75.00		77.4	788.6					0.0	284.4	77.4	1,073.0	0.0	0.0
79.67	Bot - Section 3	39.7	710.4					0.0	265.9	39.7	976.3	0.0	0.0
80.00		26.5	84.3					0.0	18.6	26.5	102.9	0.0	0.0
83.00	Appertunance(s)	34.4	764.2	310.1	0.0	0.0	1,566.0	0.0	170.7	344.5	2,500.9	0.0	0.0
84.34	Top - Section 2	15.7	335.5					0.0	76.2	15.7	411.7	0.0	0.0
85.00		43.9	69.3					0.0	37.5	43.9	106.8	0.0	0.0
90.00		68.9	512.9					0.0	284.4	68.9	797.3	0.0	0.0
94.00	Appertunance(s)	37.7	395.2	637.6	0.0	0.0	2,553.3	0.0	227.6	675.3	3,176.0	0.0	0.0
95.00		44.1	96.7					0.0	52.7	44.1	149.4	0.0	0.0
100.00		65.2	470.8					0.0	263.7	65.2	734.5	0.0	0.0
104.00	Appertunance(s)	35.5	361.5	417.1	0.0	0.0	1,675.4	0.0	211.0	452.6	2,247.9	0.0	0.0
105.00		41.4	88.3					0.0	46.2	41.4	134.5	0.0	0.0
110.00		67.5	428.8					0.0	230.9	67.5	659.7	0.0	0.0
115.00		34.6	407.8					0.0	230.9	34.6	638.7	0.0	0.0
115.22	Bot - Section 4	24.7	17.5					0.0	10.2	24.7	27.6	0.0	0.0
118.80	Top - Section 3	30.9	449.5					0.0	165.5	30.9	615.0	0.0	0.0
120.00	Appertunance(s)	38.6	55.6	2,171.2	0.0	0.0	4,500.0	0.0	55.3	2,209.8	4,610.9	0.0	0.0
125.00		60.6	224.5					0.0	149.2	60.6	373.7	0.0	0.0
130.00	Appertunance(s)	57.8	211.9	1,051.7	0.0	0.0	3,152.6	0.0	149.2	1,109.6	3,513.7	0.0	0.0
135.00		44.4	199.3					0.0	3.3	44.4	202.6	0.0	0.0
138.00	Appertunance(s)	26.7	113.5	83.6	0.0	574.9	125.0	0.0	2.0	110.3	240.5	0.0	0.0
140.00		10.5	73.2					0.0	0.0	10.5	73.2	0.0	0.0
Totals:										6,830.75	43,768.7	0.00	0.00

Site Number: 411256

Code: ANSI/TIA-222-G

© 2007 - 2017 by ATC IP LLC. All rights reserved.

Site Name: CANTON CT, CT

Engineering Number: OAA715611_C3_01

11/2/2017 1:53:36 PM

Customer: VERIZON WIRELESS

Load Case: 1.0D + 1.0W

Serviceability 60 mph

22 Iterations

Gust Response Factor :1.10

Wind Importance Factor :1.00

Dead Load Factor :1.00

Wind Load Factor :1.00

Calculated Forces

Seg Elev (ft)	Pu FY (-) (kips)	Vu FX (-) (kips)	Tu MY (ft-kips)	Mu MZ (ft-kips)	Mu MX (ft-kips)	Resultant Moment (ft-kips)	phi Pn (kips)	phi Vn (kips)	phi Tn (ft-kips)	phi Mn (ft-kips)	Total Deflect (in)	Rotation (deg)	Ratio
0.00	-43.77	-6.80	0.00	-701.53	0.00	701.53	5,907.57	2,953.79	12,233.7	6,125.97	0.00	0.00	0.122
5.00	-42.13	-6.73	0.00	-667.54	0.00	667.54	5,798.22	2,899.11	11,708.2	5,862.84	0.02	-0.04	0.121
10.00	-40.53	-6.67	0.00	-633.87	0.00	633.87	5,660.37	2,830.18	11,137.9	5,577.27	0.08	-0.08	0.121
15.00	-38.96	-6.61	0.00	-600.52	0.00	600.52	5,513.53	2,756.76	10,564.7	5,290.20	0.18	-0.12	0.121
20.00	-37.43	-6.54	0.00	-567.49	0.00	567.49	5,366.68	2,683.34	10,006.5	5,010.72	0.32	-0.16	0.120
25.00	-35.92	-6.48	0.00	-534.77	0.00	534.77	5,219.84	2,609.92	9,463.58	4,738.82	0.51	-0.20	0.120
30.00	-34.46	-6.42	0.00	-502.35	0.00	502.35	5,073.00	2,536.50	8,935.73	4,474.51	0.74	-0.24	0.119
35.00	-33.02	-6.36	0.00	-470.24	0.00	470.24	4,926.16	2,463.08	8,423.04	4,217.78	1.02	-0.28	0.118
40.00	-31.63	-6.32	0.00	-438.45	0.00	438.45	4,779.32	2,389.66	7,925.49	3,968.63	1.34	-0.33	0.117
40.13	-31.59	-6.29	0.00	-437.63	0.00	437.63	4,775.51	2,387.75	7,912.75	3,962.26	1.35	-0.33	0.117
45.00	-29.32	-6.24	0.00	-406.99	0.00	406.99	4,632.48	2,316.24	7,443.09	3,727.08	1.70	-0.37	0.116
45.88	-28.91	-6.21	0.00	-401.50	0.00	401.50	4,127.52	2,063.76	6,764.96	3,387.51	1.77	-0.38	0.126
50.00	-27.91	-6.15	0.00	-375.92	0.00	375.92	4,021.65	2,010.83	6,420.54	3,215.04	2.12	-0.42	0.124
55.00	-26.71	-6.08	0.00	-345.19	0.00	345.19	3,893.17	1,946.58	6,014.64	3,011.79	2.59	-0.47	0.121
60.00	-25.55	-6.00	0.00	-314.81	0.00	314.81	3,764.68	1,882.34	5,621.99	2,815.17	3.10	-0.52	0.119
65.00	-24.41	-5.93	0.00	-284.79	0.00	284.79	3,636.20	1,818.10	5,242.60	2,625.19	3.67	-0.57	0.115
70.00	-23.30	-5.86	0.00	-255.13	0.00	255.13	3,507.71	1,753.86	4,876.46	2,441.85	4.30	-0.62	0.111
75.00	-22.23	-5.79	0.00	-225.83	0.00	225.83	3,379.23	1,689.61	4,523.57	2,265.15	4.97	-0.67	0.106
79.67	-21.25	-5.75	0.00	-198.78	0.00	198.78	3,259.13	1,629.57	4,205.72	2,105.99	5.65	-0.71	0.101
80.00	-21.14	-5.72	0.00	-196.90	0.00	196.90	3,250.74	1,625.37	4,183.94	2,095.08	5.70	-0.72	0.100
83.00	-18.64	-5.36	0.00	-179.73	0.00	179.73	3,173.65	1,586.82	3,986.52	1,996.22	6.16	-0.75	0.096
84.34	-18.23	-5.34	0.00	-172.55	0.00	172.55	2,286.71	1,143.35	2,923.37	1,463.86	6.37	-0.76	0.126
85.00	-18.12	-5.30	0.00	-169.03	0.00	169.03	2,277.67	1,138.84	2,896.31	1,450.31	6.47	-0.77	0.125
90.00	-17.32	-5.24	0.00	-142.51	0.00	142.51	2,193.67	1,096.84	2,676.37	1,340.17	7.31	-0.83	0.114
94.00	-14.15	-4.52	0.00	-121.56	0.00	121.56	2,120.25	1,060.13	2,499.32	1,251.52	8.02	-0.87	0.104
95.00	-14.00	-4.48	0.00	-117.04	0.00	117.04	2,101.90	1,050.95	2,456.00	1,229.83	8.20	-0.88	0.102
100.00	-13.27	-4.42	0.00	-94.62	0.00	94.62	2,010.12	1,005.06	2,245.10	1,124.22	9.16	-0.93	0.091
104.00	-11.02	-3.93	0.00	-76.94	0.00	76.94	1,936.70	968.35	2,083.19	1,043.15	9.96	-0.97	0.079
105.00	-10.89	-3.89	0.00	-73.01	0.00	73.01	1,918.35	959.17	2,043.66	1,023.35	10.16	-0.98	0.077
110.00	-10.23	-3.82	0.00	-53.54	0.00	53.54	1,826.57	913.29	1,851.70	927.22	11.21	-1.02	0.063
115.00	-9.59	-3.78	0.00	-34.43	0.00	34.43	1,734.80	867.40	1,669.20	835.84	12.30	-1.06	0.047
115.22	-9.56	-3.75	0.00	-33.60	0.00	33.60	1,730.76	865.38	1,661.38	831.93	12.35	-1.06	0.046
118.80	-8.95	-3.71	0.00	-20.15	0.00	20.15	956.25	478.12	907.22	454.29	13.15	-1.07	0.054
120.00	-4.38	-1.42	0.00	-15.71	0.00	15.71	947.93	473.97	887.63	444.47	13.42	-1.08	0.040
125.00	-4.00	-1.35	0.00	-8.61	0.00	8.61	912.05	456.02	806.99	404.09	14.56	-1.10	0.026
130.00	-0.51	-0.18	0.00	-1.85	0.00	1.85	874.32	437.16	728.52	364.80	15.72	-1.11	0.006
135.00	-0.31	-0.13	0.00	-0.98	0.00	0.98	834.76	417.38	652.50	326.73	16.88	-1.11	0.003
138.00	-0.07	-0.01	0.00	-0.02	0.00	0.02	809.68	404.84	607.85	304.38	17.57	-1.11	0.000
140.00	0.00	-0.01	0.00	0.00	0.00	0.00	787.66	393.83	575.06	287.96	18.04	-1.11	0.000

Site Number: 411256

Code: ANSI/TIA-222-G © 2007 - 2017 by ATC IP LLC. All rights reserved.

Site Name: CANTON CT, CT

Engineering Number: OAA715611_C3_01

11/2/2017 1:53:37 PM

Customer: VERIZON WIRELESS

Equivalent Lateral Forces Method Analysis

(Based on ASCE7-10 Chapters 11, 12, 15)

Spectral Response Acceleration for Short Period (S_s):	0.18
Spectral Response Acceleration at 1.0 Second Period (S_{d1}):	0.06
Long-Period Transition Period (T_L):	6
Importance Factor (I_E):	1.00
Site Coefficient F_a :	1.60
Site Coefficient F_v :	2.40
Response Modification Coefficient (R):	1.50
Design Spectral Response Acceleration at Short Period (S_{ds}):	0.19
Design Spectral Response Acceleration at 1.0 Second Period (S_{d1}):	0.10
Seismic Response Coefficient (C_s):	0.03
Upper Limit C_s	0.03
Lower Limit C_s	0.03
Period based on Rayleigh Method (sec):	2.05
Redundancy Factor (p):	1.30
Seismic Force Distribution Exponent (k):	1.77
Total Unfactored Dead Load:	43.77 k
Seismic Base Shear (E):	1.90 k

Load Case (1.2 + 0.2Sds) * DL + E ELFM Seismic Equivalent Lateral Forces Method

Segment	Height Above Base (ft)	Weight (lb)	W_z (lb-ft)	C_{vx}	Horizontal Force (lb)	Vertical Force (lb)
38	139.00	73	460	0.004	8	91
37	136.50	116	703	0.007	13	143
36	132.50	203	1,170	0.011	21	251
35	127.50	361	1,948	0.019	36	447
34	122.50	374	1,878	0.018	34	463
33	119.40	111	533	0.005	10	137
32	117.01	615	2,850	0.027	52	762
31	115.11	28	124	0.001	2	34
30	112.50	639	2,760	0.027	51	791
29	107.50	660	2,631	0.025	48	817
28	104.50	134	510	0.005	9	167
27	102.00	572	2,080	0.020	38	709
26	97.50	735	2,464	0.024	45	910
25	94.50	149	474	0.005	9	185
24	92.00	623	1,884	0.018	34	771
23	87.50	797	2,207	0.021	40	987
22	84.67	107	279	0.003	5	132
21	83.67	412	1,053	0.010	19	510
20	81.50	935	2,282	0.022	42	1,158
19	79.84	103	242	0.002	4	127
18	77.34	976	2,172	0.021	40	1,209
17	72.50	1,073	2,129	0.021	39	1,329
16	67.50	1,102	1,927	0.019	35	1,365

Site Number: 411256

Code: ANSI/TIA-222-G © 2007 - 2017 by ATC IP LLC. All rights reserved.

Site Name: CANTON CT, CT

Engineering Number: OAA715611_C3_01

11/2/2017 1:53:37 PM

Customer: VERIZON WIRELESS

15	62.50	1,132	1,726	0.017	32	1,402
14	57.50	1,161	1,527	0.015	28	1,438
13	52.50	1,191	1,333	0.013	24	1,475
12	47.94	1,003	956	0.009	17	1,242
11	45.44	403	349	0.003	6	499
10	42.56	2,266	1,749	0.017	32	2,806
9	40.06	36	25	0.000	0	44
8	37.50	1,396	861	0.008	16	1,728
7	32.50	1,429	684	0.007	13	1,770
6	27.50	1,463	521	0.005	10	1,812
5	22.50	1,497	373	0.004	7	1,853
4	17.50	1,530	244	0.002	4	1,895
3	12.50	1,564	138	0.001	3	1,937
2	7.50	1,598	57	0.001	1	1,978
1	2.50	1,631	8	0.000	0	2,020
Stand-Off	138.00	75	466	0.004	9	93
18' Omni	138.00	50	310	0.003	6	62
CCI DTMAPB7819VG12A	130.00	115	643	0.006	12	143
Raycap DC6-48-60-0-8	130.00	66	366	0.004	7	81
Ericsson RRUS-11 (50	130.00	300	1,675	0.016	31	372
Ericsson RRUS 32 (50	130.00	152	851	0.008	16	189
KMW AM-X-CD-14-65-00	130.00	36	203	0.002	4	45
Kathrein Scala 800-1	130.00	132	739	0.007	14	164
CSS DUO1417-8686	130.00	61	340	0.003	6	75
Andrew SBNHH-1D65A (130.00	34	187	0.002	3	41
KMW AM-X-CD-17-65-00	130.00	60	332	0.003	6	74
Andrew SBNHH-1D6565C	130.00	61	340	0.003	6	75
CCI HPA-65R-BUU-H8	130.00	136	760	0.007	14	168
Flat Platform w/ Han	130.00	2,000	11,169	0.108	204	2,477
Samsung PCS/AWS Dual	120.00	253	1,227	0.012	22	314
Samsung 700/850MHz D	120.00	211	1,022	0.010	19	261
RFS DB-T1-6Z-8AB-OZ	120.00	88	426	0.004	8	109
Antel LPA-80080/4CF	120.00	48	233	0.002	4	59
Antel LPA-80063/4CF	120.00	40	194	0.002	4	50
Amphenol Antel BXA-7	120.00	51	247	0.002	5	63
Commscope SBNHH-1D65	120.00	304	1,474	0.014	27	377
Flat Platform w/ Han	120.00	2,000	9,692	0.093	177	2,477
VZW Unused Reserve:	120.00	1,505	7,292	0.070	133	1,863
Kathrein Smart Bias	104.00	7	25	0.000	0	8
Ericsson KRY 112 489	104.00	31	116	0.001	2	38
RFS APXV18-209014-C	104.00	37	141	0.001	3	46
Commscope LNX-6515DS	104.00	101	378	0.004	7	125
Flat Low Profile Pla	104.00	1,500	5,640	0.054	103	1,858
PCTEL GPS-TMG-HR-26N	94.00	1	2	0.000	0	1
Alcatel-Lucent RRH2x	94.00	159	499	0.005	9	197
Alcatel-Lucent 800 M	94.00	159	500	0.005	9	197
Alcatel-Lucent 1900	94.00	180	566	0.005	10	223
Alcatel-Lucent TD-RR	94.00	210	660	0.006	12	260
RFS APXVSP18-C-A20	94.00	171	538	0.005	10	212
Commscope DT465B-2XR	94.00	174	547	0.005	10	215
Flat Low Profile Pla	94.00	1,500	4,715	0.045	86	1,858
Kathrein Scala 742 2	83.00	66	166	0.002	3	82
Flat Low Profile Pla	83.00	1,500	3,782	0.036	69	1,858
		43,769	103,774	1.000	1,899	54,203

Load Case (0.9 - 0.2Sds) * DL + E ELFM

Seismic (Reduced DL) Equivalent Lateral Forces Method

Segment	Height Above Base (ft)	Weight (lb)	W _z (lb-ft)	C _{vx}	Horizontal Force (lb)	Vertical Force (lb)
38	139.00	73	460	0.004	8	63

Site Number: 411256

Code: ANSI/TIA-222-G

© 2007 - 2017 by ATC IP LLC. All rights reserved.

Site Name: CANTON CT, CT

Engineering Number:OAA715611_C3_01

11/2/2017 1:53:37 PM

Customer: VERIZON WIRELESS

37	136.50	116	703	0.007	13	100
36	132.50	203	1,170	0.011	21	175
35	127.50	361	1,948	0.019	36	311
34	122.50	374	1,878	0.018	34	322
33	119.40	111	533	0.005	10	96
32	117.01	615	2,850	0.027	52	530
31	115.11	28	124	0.001	2	24
30	112.50	639	2,760	0.027	51	550
29	107.50	660	2,631	0.025	48	568
28	104.50	134	510	0.005	9	116
27	102.00	572	2,080	0.020	38	493
26	97.50	735	2,464	0.024	45	633
25	94.50	149	474	0.005	9	129
24	92.00	623	1,884	0.018	34	537
23	87.50	797	2,207	0.021	40	687
22	84.67	107	279	0.003	5	92
21	83.67	412	1,053	0.010	19	355
20	81.50	935	2,282	0.022	42	805
19	79.84	103	242	0.002	4	89
18	77.34	976	2,172	0.021	40	841
17	72.50	1,073	2,129	0.021	39	925
16	67.50	1,102	1,927	0.019	35	950
15	62.50	1,132	1,726	0.017	32	975
14	57.50	1,161	1,527	0.015	28	1,001
13	52.50	1,191	1,333	0.013	24	1,026
12	47.94	1,003	956	0.009	17	864
11	45.44	403	349	0.003	6	347
10	42.56	2,266	1,749	0.017	32	1,952
9	40.06	36	25	0.000	0	31
8	37.50	1,396	861	0.008	16	1,203
7	32.50	1,429	684	0.007	13	1,232
6	27.50	1,463	521	0.005	10	1,261
5	22.50	1,497	373	0.004	7	1,289
4	17.50	1,530	244	0.002	4	1,318
3	12.50	1,564	138	0.001	3	1,347
2	7.50	1,598	57	0.001	1	1,376
1	2.50	1,631	8	0.000	0	1,405
Stand-Off	138.00	75	466	0.004	9	65
18' Omni	138.00	50	310	0.003	6	43
CCI DTMABP7819VG12A	130.00	115	643	0.006	12	99
Raycap DC6-48-60-0-8	130.00	66	366	0.004	7	57
Ericsson RRUS-11 (50	130.00	300	1,675	0.016	31	258
Ericsson RRUS 32 (50	130.00	152	851	0.008	16	131
KMW AM-X-CD-14-65-00	130.00	36	203	0.002	4	31
Kathrein Scala 800-1	130.00	132	739	0.007	14	114
CSS DUO1417-8686	130.00	61	340	0.003	6	52
Andrew SBNHH-1D65A (130.00	34	187	0.002	3	29
KMW AM-X-CD-17-65-00	130.00	60	332	0.003	6	51
Andrew SBNH-1D6565C	130.00	61	340	0.003	6	52
CCI HPA-65R-BUU-H8	130.00	136	760	0.007	14	117
Flat Platform w/ Han	130.00	2,000	11,169	0.108	204	1,723
Samsung PCS/AWS Dual	120.00	253	1,227	0.012	22	218
Samsung 700/850MHz D	120.00	211	1,022	0.010	19	182
RFS DB-T1-6Z-8AB-OZ	120.00	88	426	0.004	8	76
Antel LPA-80080/4CF	120.00	48	233	0.002	4	41
Antel LPA-80063/4CF	120.00	40	194	0.002	4	34
Amphenol Antel BXA-7	120.00	51	247	0.002	5	44
Commscope SBNHH-1D65	120.00	304	1,474	0.014	27	262
Flat Platform w/ Han	120.00	2,000	9,692	0.093	177	1,723
VZW Unused Reserve:	120.00	1,505	7,292	0.070	133	1,296
Kathrein Smart Bias	104.00	7	25	0.000	0	6
Ericsson KRY 112 489	104.00	31	116	0.001	2	27
RFS APXV18-209014-C	104.00	37	141	0.001	3	32
Commscope LNX-6515DS	104.00	101	378	0.004	7	87

Site Number: 411256

Code: ANSI/TIA-222-G

© 2007 - 2017 by ATC IP LLC. All rights reserved.

Site Name: CANTON CT, CT

Engineering Number:OAA715611_C3_01

11/2/2017 1:53:37 PM

Customer: VERIZON WIRELESS

Flat Low Profile Pla	104.00	1,500	5,640	0.054	103	1,292
PCTEL GPS-TMG-HR-26N	94.00	1	2	0.000	0	1
Alcatel-Lucent RRH2x	94.00	159	499	0.005	9	137
Alcatel-Lucent 800 M	94.00	159	500	0.005	9	137
Alcatel-Lucent 1900	94.00	180	566	0.005	10	155
Alcatel-Lucent TD-RR	94.00	210	660	0.006	12	181
RFS APXVSP18-C-A20	94.00	171	538	0.005	10	147
Commscope DT465B-2XR	94.00	174	547	0.005	10	150
Flat Low Profile Pla	94.00	1,500	4,715	0.045	86	1,292
Kathrein Scala 742 2	83.00	66	166	0.002	3	57
Flat Low Profile Pla	83.00	1,500	3,782	0.036	69	1,292
		43,769	103,774	1.000	1,899	37,711

Site Number: 411256

Code: ANSI/TIA-222-G © 2007 - 2017 by ATC IP LLC. All rights reserved.

Site Name: CANTON CT, CT

Engineering Number: OAA715611_C3_01

11/2/2017 1:53:37 PM

Customer: VERIZON WIRELESS

Load Case (1.2 + 0.2Sds) * DL + E ELFM Seismic Equivalent Lateral Forces Method

Calculated Forces

Seg Elev (ft)	Pu FY (-) (kips)	Vu FX (-) (kips)	Tu MY (ft-kips)	Mu MZ (ft-kips)	Mu MX (ft-kips)	Resultant Moment (ft-kips)	phi Pn (kips)	phi Vn (kips)	phi Tn (ft-kips)	phi Mn (ft-kips)	Total Deflect (in)	Rotation (deg)	Ratio
0.00	-52.18	-1.90	0.00	-202.13	0.00	202.13	5,907.57	2,953.79	12,233.7	6,125.97	0.00	0.00	0.042
5.00	-50.20	-1.91	0.00	-192.61	0.00	192.61	5,798.22	2,899.11	11,708.2	5,862.84	0.01	-0.01	0.042
10.00	-48.27	-1.92	0.00	-183.05	0.00	183.05	5,660.37	2,830.18	11,137.9	5,577.27	0.02	-0.02	0.041
15.00	-46.37	-1.92	0.00	-173.45	0.00	173.45	5,513.53	2,756.76	10,564.7	5,290.20	0.05	-0.03	0.041
20.00	-44.52	-1.92	0.00	-163.84	0.00	163.84	5,366.68	2,683.34	10,006.5	5,010.72	0.09	-0.05	0.041
25.00	-42.71	-1.92	0.00	-154.22	0.00	154.22	5,219.84	2,609.92	9,463.58	4,738.82	0.15	-0.06	0.041
30.00	-40.94	-1.92	0.00	-144.61	0.00	144.61	5,073.00	2,536.50	8,935.73	4,474.51	0.21	-0.07	0.040
35.00	-39.21	-1.91	0.00	-135.03	0.00	135.03	4,926.16	2,463.08	8,423.04	4,217.78	0.29	-0.08	0.040
40.00	-39.16	-1.91	0.00	-125.50	0.00	125.50	4,779.32	2,389.66	7,925.49	3,968.63	0.39	-0.09	0.040
40.13	-36.36	-1.88	0.00	-125.25	0.00	125.25	4,775.51	2,387.75	7,912.75	3,962.26	0.39	-0.09	0.039
45.00	-35.86	-1.88	0.00	-116.11	0.00	116.11	4,632.48	2,316.24	7,443.09	3,727.08	0.49	-0.11	0.039
45.88	-34.61	-1.86	0.00	-114.46	0.00	114.46	4,127.52	2,063.76	6,764.96	3,387.51	0.51	-0.11	0.042
50.00	-33.14	-1.84	0.00	-106.80	0.00	106.80	4,021.65	2,010.83	6,420.54	3,215.04	0.61	-0.12	0.041
55.00	-31.70	-1.82	0.00	-97.60	0.00	97.60	3,893.17	1,946.58	6,014.64	3,011.79	0.74	-0.13	0.041
60.00	-30.30	-1.79	0.00	-88.52	0.00	88.52	3,764.68	1,882.34	5,621.99	2,815.17	0.89	-0.15	0.039
65.00	-28.93	-1.76	0.00	-79.58	0.00	79.58	3,636.20	1,818.10	5,242.60	2,625.19	1.06	-0.16	0.038
70.00	-27.60	-1.72	0.00	-70.80	0.00	70.80	3,507.71	1,753.86	4,876.46	2,441.85	1.23	-0.18	0.037
75.00	-26.39	-1.68	0.00	-62.20	0.00	62.20	3,379.23	1,689.61	4,523.57	2,265.15	1.43	-0.19	0.035
79.67	-26.27	-1.68	0.00	-54.34	0.00	54.34	3,259.13	1,629.57	4,205.72	2,105.99	1.62	-0.20	0.034
80.00	-25.11	-1.64	0.00	-53.79	0.00	53.79	3,250.74	1,625.37	4,183.94	2,095.08	1.63	-0.20	0.033
83.00	-22.66	-1.54	0.00	-48.88	0.00	48.88	3,173.65	1,586.82	3,986.52	1,996.22	1.76	-0.21	0.032
84.34	-22.53	-1.53	0.00	-46.81	0.00	46.81	2,286.71	1,143.35	2,923.37	1,463.86	1.82	-0.22	0.042
85.00	-21.54	-1.49	0.00	-45.80	0.00	45.80	2,277.67	1,138.84	2,896.31	1,450.31	1.85	-0.22	0.041
90.00	-20.77	-1.46	0.00	-38.33	0.00	38.33	2,193.67	1,096.84	2,676.37	1,340.17	2.09	-0.23	0.038
94.00	-17.42	-1.29	0.00	-32.49	0.00	32.49	2,120.25	1,060.13	2,499.32	1,251.52	2.29	-0.25	0.034
95.00	-16.51	-1.25	0.00	-31.20	0.00	31.20	2,101.90	1,050.95	2,456.00	1,229.83	2.34	-0.25	0.033
100.00	-15.80	-1.21	0.00	-24.96	0.00	24.96	2,010.12	1,005.06	2,245.10	1,124.22	2.61	-0.26	0.030
104.00	-13.56	-1.08	0.00	-20.12	0.00	20.12	1,936.70	968.35	2,083.19	1,043.15	2.83	-0.27	0.026
105.00	-12.75	-1.03	0.00	-19.05	0.00	19.05	1,918.35	959.17	2,043.66	1,023.35	2.89	-0.27	0.025
110.00	-11.95	-0.97	0.00	-13.92	0.00	13.92	1,826.57	913.29	1,851.70	927.22	3.18	-0.29	0.022
115.00	-11.92	-0.97	0.00	-9.06	0.00	9.06	1,734.80	867.40	1,669.20	835.84	3.49	-0.29	0.018
115.22	-11.16	-0.92	0.00	-8.85	0.00	8.85	1,730.76	865.38	1,661.38	831.93	3.50	-0.29	0.017
118.80	-11.02	-0.91	0.00	-5.56	0.00	5.56	956.25	478.12	907.22	454.29	3.72	-0.30	0.024
120.00	-4.99	-0.44	0.00	-4.48	0.00	4.48	947.93	473.97	887.63	444.47	3.80	-0.30	0.015
125.00	-4.54	-0.40	0.00	-2.28	0.00	2.28	912.05	456.02	806.99	404.09	4.12	-0.31	0.011
130.00	-0.39	-0.04	0.00	-0.26	0.00	0.26	874.32	437.16	728.52	364.80	4.44	-0.31	0.001
135.00	-0.25	-0.02	0.00	-0.07	0.00	0.07	834.76	417.38	652.50	326.73	4.76	-0.31	0.001
138.00	0.00	0.00	0.00	0.00	0.00	0.00	809.68	404.84	607.85	304.38	4.95	-0.31	0.000
140.00	0.00	0.00	0.00	0.00	0.00	0.00	787.66	393.83	575.06	287.96	5.08	-0.31	0.000

Site Number: 411256

Code: ANSI/TIA-222-G

© 2007 - 2017 by ATC IP LLC. All rights reserved.

Site Name: CANTON CT, CT

Engineering Number: OAA715611_C3_01

11/2/2017 1:53:37 PM

Customer: VERIZON WIRELESS

Load Case (0.9 - 0.2Sds) * DL + E ELFM

Seismic (Reduced DL) Equivalent Lateral Forces Method

Calculated Forces

Seg Elev (ft)	Pu FY (-) (kips)	Vu FX (-) (kips)	Tu MY (ft-kips)	Mu MZ (ft-kips)	Mu MX (ft-kips)	Resultant Moment (ft-kips)	phi Pn (kips)	phi Vn (kips)	phi Tn (ft-kips)	phi Mn (ft-kips)	Total Deflect (in)	Rotation (deg)	Ratio
0.00	-36.31	-1.90	0.00	-199.69	0.00	199.69	5,907.57	2,953.79	12,233.7	6,125.97	0.00	0.00	0.039
5.00	-34.93	-1.91	0.00	-190.18	0.00	190.18	5,798.22	2,899.11	11,708.2	5,862.84	0.01	-0.01	0.038
10.00	-33.58	-1.91	0.00	-180.64	0.00	180.64	5,660.37	2,830.18	11,137.9	5,577.27	0.02	-0.02	0.038
15.00	-32.26	-1.91	0.00	-171.09	0.00	171.09	5,513.53	2,756.76	10,564.7	5,290.20	0.05	-0.03	0.038
20.00	-30.97	-1.91	0.00	-161.52	0.00	161.52	5,366.68	2,683.34	10,006.5	5,010.72	0.09	-0.04	0.038
25.00	-29.71	-1.91	0.00	-151.97	0.00	151.97	5,219.84	2,609.92	9,463.58	4,738.82	0.15	-0.06	0.038
30.00	-28.48	-1.90	0.00	-142.43	0.00	142.43	5,073.00	2,536.50	8,935.73	4,474.51	0.21	-0.07	0.037
35.00	-27.28	-1.89	0.00	-132.94	0.00	132.94	4,926.16	2,463.08	8,423.04	4,217.78	0.29	-0.08	0.037
40.00	-27.25	-1.89	0.00	-123.50	0.00	123.50	4,779.32	2,389.66	7,925.49	3,968.63	0.38	-0.09	0.037
40.13	-25.29	-1.86	0.00	-123.25	0.00	123.25	4,775.51	2,387.75	7,912.75	3,962.26	0.38	-0.09	0.036
45.00	-24.95	-1.85	0.00	-114.21	0.00	114.21	4,632.48	2,316.24	7,443.09	3,727.08	0.48	-0.11	0.036
45.88	-24.08	-1.84	0.00	-112.58	0.00	112.58	4,127.52	2,063.76	6,764.96	3,387.51	0.50	-0.11	0.039
50.00	-23.05	-1.82	0.00	-105.01	0.00	105.01	4,021.65	2,010.83	6,420.54	3,215.04	0.60	-0.12	0.038
55.00	-22.05	-1.79	0.00	-95.93	0.00	95.93	3,893.17	1,946.58	6,014.64	3,011.79	0.73	-0.13	0.038
60.00	-21.08	-1.76	0.00	-86.97	0.00	86.97	3,764.68	1,882.34	5,621.99	2,815.17	0.88	-0.15	0.036
65.00	-20.13	-1.73	0.00	-78.16	0.00	78.16	3,636.20	1,818.10	5,242.60	2,625.19	1.04	-0.16	0.035
70.00	-19.20	-1.69	0.00	-69.51	0.00	69.51	3,507.71	1,753.86	4,876.46	2,441.85	1.22	-0.17	0.034
75.00	-18.36	-1.65	0.00	-61.05	0.00	61.05	3,379.23	1,689.61	4,523.57	2,265.15	1.41	-0.19	0.032
79.67	-18.27	-1.65	0.00	-53.32	0.00	53.32	3,259.13	1,629.57	4,205.72	2,105.99	1.60	-0.20	0.031
80.00	-17.47	-1.61	0.00	-52.78	0.00	52.78	3,250.74	1,625.37	4,183.94	2,095.08	1.61	-0.20	0.031
83.00	-15.76	-1.51	0.00	-47.96	0.00	47.96	3,173.65	1,586.82	3,986.52	1,996.22	1.74	-0.21	0.029
84.34	-15.67	-1.51	0.00	-45.93	0.00	45.93	2,286.71	1,143.35	2,923.37	1,463.86	1.80	-0.21	0.038
85.00	-14.98	-1.47	0.00	-44.94	0.00	44.94	2,277.67	1,138.84	2,896.31	1,450.31	1.83	-0.21	0.038
90.00	-14.45	-1.43	0.00	-37.60	0.00	37.60	2,193.67	1,096.84	2,676.37	1,340.17	2.06	-0.23	0.035
94.00	-12.12	-1.27	0.00	-31.87	0.00	31.87	2,120.25	1,060.13	2,499.32	1,251.52	2.26	-0.24	0.031
95.00	-11.49	-1.22	0.00	-30.60	0.00	30.60	2,101.90	1,050.95	2,456.00	1,229.83	2.31	-0.24	0.030
100.00	-10.99	-1.19	0.00	-24.48	0.00	24.48	2,010.12	1,005.06	2,245.10	1,124.22	2.57	-0.26	0.027
104.00	-9.43	-1.06	0.00	-19.73	0.00	19.73	1,936.70	968.35	2,083.19	1,043.15	2.79	-0.27	0.024
105.00	-8.87	-1.01	0.00	-18.68	0.00	18.68	1,918.35	959.17	2,043.66	1,023.35	2.85	-0.27	0.023
110.00	-8.32	-0.95	0.00	-13.65	0.00	13.65	1,826.57	913.29	1,851.70	927.22	3.14	-0.28	0.019
115.00	-8.29	-0.95	0.00	-8.88	0.00	8.88	1,734.80	867.40	1,669.20	835.84	3.43	-0.29	0.015
115.22	-7.76	-0.90	0.00	-8.67	0.00	8.67	1,730.76	865.38	1,661.38	831.93	3.45	-0.29	0.015
118.80	-7.67	-0.89	0.00	-5.46	0.00	5.46	956.25	478.12	907.22	454.29	3.67	-0.29	0.020
120.00	-3.47	-0.43	0.00	-4.40	0.00	4.40	947.93	473.97	887.63	444.47	3.74	-0.29	0.014
125.00	-3.16	-0.40	0.00	-2.23	0.00	2.23	912.05	456.02	806.99	404.09	4.05	-0.30	0.009
130.00	-0.27	-0.04	0.00	-0.25	0.00	0.25	874.32	437.16	728.52	364.80	4.37	-0.30	0.001
135.00	-0.17	-0.02	0.00	-0.07	0.00	0.07	834.76	417.38	652.50	326.73	4.68	-0.30	0.000
138.00	0.00	0.00	0.00	0.00	0.00	0.00	809.68	404.84	607.85	304.38	4.87	-0.30	0.000
140.00	0.00	0.00	0.00	0.00	0.00	0.00	787.66	393.83	575.06	287.96	5.00	-0.30	0.000

Site Number: 411256
 Site Name: CANTON CT, CT
 Customer: VERIZON WIRELESS

Code: ANSI/TIA-222-G
 Engineering Number: OAA715611_C3_01

© 2007 - 2017 by ATC IP LLC. All rights reserved.
 11/2/2017 1:53:37 PM

Equivalent Modal Forces Analysis

(Based on ASCE7-10 Chapters 11, 12 & 15 and ANSI/TIA-G, section 2.7)

Spectral Response Acceleration for Short Period (S_s):	0.18
Spectral Response Acceleration at 1.0 Second Period (S_1):	0.06
Importance Factor (I_E):	1.00
Site Coefficient F_a :	1.60
Site Coefficient F_v :	2.40
Response Modification Coefficient (R):	1.50
Design Spectral Response Acceleration at Short Period (S_{ds}):	0.19
Design Spectral Response Acceleration at 1.0 Second Period (S_{d1}):	0.10
Period Based on Rayleigh Method (sec):	2.05
Redundancy Factor (p):	1.30

Load Case (1.2 + 0.2Sds) * DL + E EMAM Seismic Equivalent Modal Analysis Method

Segment	Height Above Base (ft)	Weight (lb)	a	b	c	Saz	Horizontal Force (lb)	Vertical Force (lb)
38	139.00	73	1.863	1.841	1.090	0.351	22	91
37	136.50	116	1.797	1.523	0.972	0.310	31	143
36	132.50	203	1.693	1.096	0.804	0.249	44	251
35	127.50	361	1.568	0.682	0.627	0.182	57	447
34	122.50	374	1.447	0.379	0.482	0.124	40	463
33	119.40	111	1.375	0.238	0.406	0.092	9	137
32	117.01	615	1.320	0.150	0.354	0.071	38	762
31	115.11	28	1.278	0.091	0.317	0.055	1	34
30	112.50	639	1.220	0.025	0.270	0.036	20	791
29	107.50	660	1.114	-0.061	0.196	0.005	3	817
28	104.50	134	1.053	-0.093	0.159	-0.008	-1	167
27	102.00	572	1.003	-0.109	0.133	-0.017	-9	709
26	97.50	735	0.917	-0.121	0.094	-0.028	-18	910
25	94.50	149	0.861	-0.120	0.073	-0.031	-4	185
24	92.00	623	0.816	-0.115	0.059	-0.032	-17	771
23	87.50	797	0.738	-0.098	0.038	-0.028	-19	987
22	84.67	107	0.691	-0.084	0.028	-0.023	-2	132
21	83.67	412	0.675	-0.079	0.025	-0.021	-7	510
20	81.50	935	0.641	-0.067	0.020	-0.015	-13	1,158
19	79.84	103	0.615	-0.058	0.016	-0.011	-1	127
18	77.34	976	0.577	-0.044	0.012	-0.004	-3	1,209
17	72.50	1,073	0.507	-0.019	0.007	0.011	10	1,329
16	67.50	1,102	0.439	0.005	0.006	0.025	24	1,365
15	62.50	1,132	0.377	0.025	0.007	0.036	35	1,402
14	57.50	1,161	0.319	0.041	0.011	0.043	43	1,438
13	52.50	1,191	0.266	0.052	0.015	0.047	48	1,475
12	47.94	1,003	0.222	0.060	0.020	0.048	42	1,242
11	45.44	403	0.199	0.063	0.023	0.049	17	499
10	42.56	2,266	0.175	0.066	0.027	0.048	95	2,806
9	40.06	36	0.155	0.067	0.029	0.048	1	44
8	37.50	1,396	0.136	0.069	0.032	0.047	57	1,728
7	32.50	1,429	0.102	0.071	0.037	0.046	57	1,770
6	27.50	1,463	0.073	0.072	0.040	0.045	57	1,812
5	22.50	1,497	0.049	0.071	0.042	0.043	56	1,853

Site Number: 411256

Code: ANSI/TIA-222-G

© 2007 - 2017 by ATC IP LLC. All rights reserved.

Site Name: CANTON CT, CT

Engineering Number: OAA715611_C3_01

11/2/2017 1:53:37 PM

Customer: VERIZON WIRELESS

4	17.50	1,530	0.030	0.068	0.040	0.041	54	1,895
3	12.50	1,564	0.015	0.061	0.036	0.037	50	1,937
2	7.50	1,598	0.005	0.046	0.026	0.029	40	1,978
1	2.50	1,631	0.001	0.019	0.010	0.013	19	2,020
Stand-Off	138.00	75	1.836	1.709	1.041	0.334	22	93
18' Omni	138.00	50	1.836	1.709	1.041	0.334	14	62
CCI DTMABP7819VG12A	130.00	115	1.630	0.873	0.711	0.214	21	143
Raycap DC6-48-60-0-8	130.00	66	1.630	0.873	0.711	0.214	12	81
Ericsson RRUS-11 (50	130.00	300	1.630	0.873	0.711	0.214	56	372
Ericsson RRUS 32 (50	130.00	152	1.630	0.873	0.711	0.214	28	189
KMW AM-X-CD-14-65-00	130.00	36	1.630	0.873	0.711	0.214	7	45
Kathrein Scala 800-1	130.00	132	1.630	0.873	0.711	0.214	25	164
CSS DUO1417-8686	130.00	61	1.630	0.873	0.711	0.214	11	75
Andrew SBNHH-1D65A (130.00	34	1.630	0.873	0.711	0.214	6	41
KMW AM-X-CD-17-65-00	130.00	60	1.630	0.873	0.711	0.214	11	74
Andrew SBNH-1D6565C	130.00	61	1.630	0.873	0.711	0.214	11	75
CCI HPA-65R-BUU-H8	130.00	136	1.630	0.873	0.711	0.214	25	168
Flat Platform w/ Han	130.00	2,000	1.630	0.873	0.711	0.214	371	2,477
Samsung PCS/AWS	120.00	253	1.389	0.263	0.420	0.098	22	314
Samsung 700/850MHz D	120.00	211	1.389	0.263	0.420	0.098	18	261
RFS DB-T1-6Z-8AB-0Z	120.00	88	1.389	0.263	0.420	0.098	7	109
Antel LPA-80080/4CF	120.00	48	1.389	0.263	0.420	0.098	4	59
Antel LPA-80063/4CF	120.00	40	1.389	0.263	0.420	0.098	3	50
Amphenol Antel BXA-7	120.00	51	1.389	0.263	0.420	0.098	4	63
Commscope SBNHH-	120.00	304	1.389	0.263	0.420	0.098	26	377
Flat Platform w/ Han	120.00	2,000	1.389	0.263	0.420	0.098	170	2,477
VZW Unused Reserve:	120.00	1,505	1.389	0.263	0.420	0.098	128	1,863
Kathrein Smart Bias	104.00	7	1.043	-0.097	0.154	-0.010	0	8
Ericsson KRY 112 489	104.00	31	1.043	-0.097	0.154	-0.010	0	38
RFS APXV18-209014-C	104.00	37	1.043	-0.097	0.154	-0.010	0	46
Commscope LNX-	104.00	101	1.043	-0.097	0.154	-0.010	-1	125
Flat Low Profile Pla	104.00	1,500	1.043	-0.097	0.154	-0.010	-14	1,858
PCTEL GPS-TMG-HR-	94.00	1	0.852	-0.119	0.070	-0.032	0	1
Alcatel-Lucent RRH2x	94.00	159	0.852	-0.119	0.070	-0.032	-4	197
Alcatel-Lucent 800 M	94.00	159	0.852	-0.119	0.070	-0.032	-4	197
Alcatel-Lucent 1900	94.00	180	0.852	-0.119	0.070	-0.032	-5	223
Alcatel-Lucent TD-RR	94.00	210	0.852	-0.119	0.070	-0.032	-6	260
RFS APXVSP18-C-A20	94.00	171	0.852	-0.119	0.070	-0.032	-5	212
Commscope DT465B-	94.00	174	0.852	-0.119	0.070	-0.032	-5	215
Flat Low Profile Pla	94.00	1,500	0.852	-0.119	0.070	-0.032	-41	1,858
Kathrein Scala 742 2	83.00	66	0.664	-0.075	0.023	-0.019	-1	82
Flat Low Profile Pla	83.00	1,500	0.664	-0.075	0.023	-0.019	-25	1,858
		43,769	75.415	20.481	22.356	5.686	1,768	54,203

Load Case (0.9 - 0.2Sds) * DL + E EMAM

Seismic (Reduced DL) Equivalent Modal Analysis Method

Segment	Height Above Base (ft)	Weight (lb)	a	b	c	Saz	Horizontal Force (lb)	Vertical Force (lb)
38	139.00	73	1.863	1.841	1.090	0.351	22	63
37	136.50	116	1.797	1.523	0.972	0.310	31	100
36	132.50	203	1.693	1.096	0.804	0.249	44	175
35	127.50	361	1.568	0.682	0.627	0.182	57	311
34	122.50	374	1.447	0.379	0.482	0.124	40	322
33	119.40	111	1.375	0.238	0.406	0.092	9	96
32	117.01	615	1.320	0.150	0.354	0.071	38	530
31	115.11	28	1.278	0.091	0.317	0.055	1	24
30	112.50	639	1.220	0.025	0.270	0.036	20	550
29	107.50	660	1.114	-0.061	0.196	0.005	3	568
28	104.50	134	1.053	-0.093	0.159	-0.008	-1	116

Site Number: 411256

Code: ANSI/TIA-222-G

© 2007 - 2017 by ATC IP LLC. All rights reserved.

Site Name: CANTON CT, CT

Engineering Number: OAA715611_C3_01

11/2/2017 1:53:37 PM

Customer: VERIZON WIRELESS

27	102.00	572	1.003	-0.109	0.133	-0.017	-9	493
26	97.50	735	0.917	-0.121	0.094	-0.028	-18	633
25	94.50	149	0.861	-0.120	0.073	-0.031	-4	129
24	92.00	623	0.816	-0.115	0.059	-0.032	-17	537
23	87.50	797	0.738	-0.098	0.038	-0.028	-19	687
22	84.67	107	0.691	-0.084	0.028	-0.023	-2	92
21	83.67	412	0.675	-0.079	0.025	-0.021	-7	355
20	81.50	935	0.641	-0.067	0.020	-0.015	-13	805
19	79.84	103	0.615	-0.058	0.016	-0.011	-1	89
18	77.34	976	0.577	-0.044	0.012	-0.004	-3	841
17	72.50	1,073	0.507	-0.019	0.007	0.011	10	925
16	67.50	1,102	0.439	0.005	0.006	0.025	24	950
15	62.50	1,132	0.377	0.025	0.007	0.036	35	975
14	57.50	1,161	0.319	0.041	0.011	0.043	43	1,001
13	52.50	1,191	0.266	0.052	0.015	0.047	48	1,026
12	47.94	1,003	0.222	0.060	0.020	0.048	42	864
11	45.44	403	0.199	0.063	0.023	0.049	17	347
10	42.56	2,266	0.175	0.066	0.027	0.048	95	1,952
9	40.06	36	0.155	0.067	0.029	0.048	1	31
8	37.50	1,396	0.136	0.069	0.032	0.047	57	1,203
7	32.50	1,429	0.102	0.071	0.037	0.046	57	1,232
6	27.50	1,463	0.073	0.072	0.040	0.045	57	1,261
5	22.50	1,497	0.049	0.071	0.042	0.043	56	1,289
4	17.50	1,530	0.030	0.068	0.040	0.041	54	1,318
3	12.50	1,564	0.015	0.061	0.036	0.037	50	1,347
2	7.50	1,598	0.005	0.046	0.026	0.029	40	1,376
1	2.50	1,631	0.001	0.019	0.010	0.013	19	1,405
Stand-Off	138.00	75	1.836	1.709	1.041	0.334	22	65
18' Omni	138.00	50	1.836	1.709	1.041	0.334	14	43
CCI DTMAPBP7819VG12A	130.00	115	1.630	0.873	0.711	0.214	21	99
Raycap DC6-48-60-0-8	130.00	66	1.630	0.873	0.711	0.214	12	57
Ericsson RRUS-11 (50	130.00	300	1.630	0.873	0.711	0.214	56	258
Ericsson RRUS 32 (50	130.00	152	1.630	0.873	0.711	0.214	28	131
KMW AM-X-CD-14-65-00	130.00	36	1.630	0.873	0.711	0.214	7	31
Kathrein Scala 800-1	130.00	132	1.630	0.873	0.711	0.214	25	114
CSS DUO1417-8686	130.00	61	1.630	0.873	0.711	0.214	11	52
Andrew SBNHH-1D65A (130.00	34	1.630	0.873	0.711	0.214	6	29
KMW AM-X-CD-17-65-00	130.00	60	1.630	0.873	0.711	0.214	11	51
Andrew SBNH-1D6565C	130.00	61	1.630	0.873	0.711	0.214	11	52
CCI HPA-65R-BUU-H8	130.00	136	1.630	0.873	0.711	0.214	25	117
Flat Platform w/ Han	130.00	2,000	1.630	0.873	0.711	0.214	371	1,723
Samsung PCS/AWS	120.00	253	1.389	0.263	0.420	0.098	22	218
Samsung 700/850MHz D	120.00	211	1.389	0.263	0.420	0.098	18	182
RFS DB-T1-6Z-8AB-0Z	120.00	88	1.389	0.263	0.420	0.098	7	76
Antel LPA-80080/4CF	120.00	48	1.389	0.263	0.420	0.098	4	41
Antel LPA-80063/4CF	120.00	40	1.389	0.263	0.420	0.098	3	34
Amphenol Antel BXA-7	120.00	51	1.389	0.263	0.420	0.098	4	44
Commscope SBNHH-	120.00	304	1.389	0.263	0.420	0.098	26	262
Flat Platform w/ Han	120.00	2,000	1.389	0.263	0.420	0.098	170	1,723
VZW Unused Reserve:	120.00	1,505	1.389	0.263	0.420	0.098	128	1,296
Kathrein Smart Bias	104.00	7	1.043	-0.097	0.154	-0.010	0	6
Ericsson KRY 112 489	104.00	31	1.043	-0.097	0.154	-0.010	0	27
RFS APXV18-209014-C	104.00	37	1.043	-0.097	0.154	-0.010	0	32
Commscope LNX-	104.00	101	1.043	-0.097	0.154	-0.010	-1	87
Flat Low Profile Pla	104.00	1,500	1.043	-0.097	0.154	-0.010	-14	1,292
PCTEL GPS-TMG-HR-	94.00	1	0.852	-0.119	0.070	-0.032	0	1
Alcatel-Lucent RRH2x	94.00	159	0.852	-0.119	0.070	-0.032	-4	137
Alcatel-Lucent 800 M	94.00	159	0.852	-0.119	0.070	-0.032	-4	137
Alcatel-Lucent 1900	94.00	180	0.852	-0.119	0.070	-0.032	-5	155
Alcatel-Lucent TD-RR	94.00	210	0.852	-0.119	0.070	-0.032	-6	181
RFS APXVSP18-C-A20	94.00	171	0.852	-0.119	0.070	-0.032	-5	147
Commscope DT465B-	94.00	174	0.852	-0.119	0.070	-0.032	-5	150
Flat Low Profile Pla	94.00	1,500	0.852	-0.119	0.070	-0.032	-41	1,292
Kathrein Scala 742 2	83.00	66	0.664	-0.075	0.023	-0.019	-1	57

Site Number: 411256

Code: ANSI/TIA-222-G

© 2007 - 2017 by ATC IP LLC. All rights reserved.

Site Name: CANTON CT, CT

Engineering Number: OAA715611_C3_01

11/2/2017 1:53:37 PM

Customer: VERIZON WIRELESS

Flat Low Profile Pla	83.00	1,500	0.664	-0.075	0.023	-0.019	-25	1,292
		43,769	75.415	20.481	22.356	5.686	1,768	37,711

Site Number: 411256

Code: ANSI/TIA-222-G

© 2007 - 2017 by ATC IP LLC. All rights reserved.

Site Name: CANTON CT, CT

Engineering Number: OAA715611_C3_01

11/2/2017 1:53:37 PM

Customer: VERIZON WIRELESS

Load Case (1.2 + 0.2Sds) * DL + E EMAM Seismic Equivalent Modal Analysis Method

Calculated Forces

Seg Elev (ft)	Pu FY (-) (kips)	Vu FX (-) (kips)	Tu MY (ft-kips)	Mu MZ (ft-kips)	Mu MX (ft-kips)	Resultant Moment (ft-kips)	phi Pn (kips)	phi Vn (kips)	phi Tn (ft-kips)	phi Mn (ft-kips)	Total Deflect (in)	Rotation (deg)	Ratio
0.00	-52.18	-1.75	0.00	-171.56	0.00	171.56	5,907.57	2,953.79	12,233.7	6,125.97	0.00	0.00	0.037
5.00	-50.20	-1.72	0.00	-162.80	0.00	162.80	5,798.22	2,899.11	11,708.2	5,862.84	0.00	-0.01	0.036
10.00	-48.27	-1.68	0.00	-154.19	0.00	154.19	5,660.37	2,830.18	11,137.9	5,577.27	0.02	-0.02	0.036
15.00	-46.37	-1.63	0.00	-145.80	0.00	145.80	5,513.53	2,756.76	10,564.7	5,290.20	0.04	-0.03	0.036
20.00	-44.52	-1.58	0.00	-137.64	0.00	137.64	5,366.68	2,683.34	10,006.5	5,010.72	0.08	-0.04	0.036
25.00	-42.71	-1.53	0.00	-129.73	0.00	129.73	5,219.84	2,609.92	9,463.58	4,738.82	0.12	-0.05	0.036
30.00	-40.94	-1.48	0.00	-122.07	0.00	122.07	5,073.00	2,536.50	8,935.73	4,474.51	0.18	-0.06	0.035
35.00	-39.21	-1.43	0.00	-114.66	0.00	114.66	4,926.16	2,463.08	8,423.04	4,217.78	0.25	-0.07	0.035
40.00	-39.16	-1.43	0.00	-107.52	0.00	107.52	4,779.32	2,389.66	7,925.49	3,968.63	0.33	-0.08	0.035
40.13	-36.36	-1.34	0.00	-107.34	0.00	107.34	4,775.51	2,387.75	7,912.75	3,962.26	0.33	-0.08	0.035
45.00	-35.86	-1.32	0.00	-100.83	0.00	100.83	4,632.48	2,316.24	7,443.09	3,727.08	0.41	-0.09	0.035
45.88	-34.62	-1.28	0.00	-99.67	0.00	99.67	4,127.52	2,063.76	6,764.96	3,387.51	0.43	-0.09	0.038
50.00	-33.14	-1.24	0.00	-94.39	0.00	94.39	4,021.65	2,010.83	6,420.54	3,215.04	0.52	-0.10	0.038
55.00	-31.70	-1.20	0.00	-88.21	0.00	88.21	3,893.17	1,946.58	6,014.64	3,011.79	0.63	-0.11	0.037
60.00	-30.30	-1.17	0.00	-82.21	0.00	82.21	3,764.68	1,882.34	5,621.99	2,815.17	0.76	-0.13	0.037
65.00	-28.93	-1.15	0.00	-76.38	0.00	76.38	3,636.20	1,818.10	5,242.60	2,625.19	0.90	-0.14	0.037
70.00	-27.61	-1.14	0.00	-70.64	0.00	70.64	3,507.71	1,753.86	4,876.46	2,441.85	1.05	-0.15	0.037
75.00	-26.40	-1.15	0.00	-64.95	0.00	64.95	3,379.23	1,689.61	4,523.57	2,265.15	1.22	-0.17	0.036
79.67	-26.27	-1.15	0.00	-59.59	0.00	59.59	3,259.13	1,629.57	4,205.72	2,105.99	1.39	-0.18	0.036
80.00	-25.11	-1.16	0.00	-59.21	0.00	59.21	3,250.74	1,625.37	4,183.94	2,095.08	1.41	-0.18	0.036
83.00	-22.66	-1.19	0.00	-55.73	0.00	55.73	3,173.65	1,586.82	3,986.52	1,996.22	1.53	-0.19	0.035
84.34	-22.53	-1.19	0.00	-54.14	0.00	54.14	2,286.71	1,143.35	2,923.37	1,463.86	1.58	-0.20	0.047
85.00	-21.54	-1.21	0.00	-53.35	0.00	53.35	2,277.67	1,138.84	2,896.31	1,450.31	1.61	-0.20	0.046
90.00	-20.77	-1.23	0.00	-47.29	0.00	47.29	2,193.67	1,096.84	2,676.37	1,340.17	1.82	-0.22	0.045
94.00	-17.42	-1.30	0.00	-42.36	0.00	42.36	2,120.25	1,060.13	2,499.32	1,251.52	2.01	-0.23	0.042
95.00	-16.51	-1.31	0.00	-41.07	0.00	41.07	2,101.90	1,050.95	2,456.00	1,229.83	2.06	-0.24	0.041
100.00	-15.80	-1.32	0.00	-34.50	0.00	34.50	2,010.12	1,005.06	2,245.10	1,124.22	2.32	-0.26	0.039
104.00	-13.56	-1.33	0.00	-29.20	0.00	29.20	1,936.70	968.35	2,083.19	1,043.15	2.54	-0.27	0.035
105.00	-12.74	-1.33	0.00	-27.87	0.00	27.87	1,918.35	959.17	2,043.66	1,023.35	2.60	-0.27	0.034
110.00	-11.95	-1.31	0.00	-21.23	0.00	21.23	1,826.57	913.29	1,851.70	927.22	2.89	-0.29	0.029
115.00	-11.92	-1.31	0.00	-14.70	0.00	14.70	1,734.80	867.40	1,669.20	835.84	3.20	-0.30	0.024
115.22	-11.16	-1.27	0.00	-14.41	0.00	14.41	1,730.76	865.38	1,661.38	831.93	3.22	-0.30	0.024
118.80	-11.02	-1.26	0.00	-9.87	0.00	9.87	956.25	478.12	907.22	454.29	3.45	-0.31	0.033
120.00	-4.99	-0.80	0.00	-8.37	0.00	8.37	947.93	473.97	887.63	444.47	3.52	-0.31	0.024
125.00	-4.54	-0.74	0.00	-4.36	0.00	4.36	912.05	456.02	806.99	404.09	3.86	-0.32	0.016
130.00	-0.39	-0.09	0.00	-0.64	0.00	0.64	874.32	437.16	728.52	364.80	4.20	-0.33	0.002
135.00	-0.25	-0.06	0.00	-0.18	0.00	0.18	834.76	417.38	652.50	326.73	4.54	-0.33	0.001
138.00	0.00	0.00	0.00	0.00	0.00	0.00	809.68	404.84	607.85	304.38	4.75	-0.33	0.000
140.00	0.00	0.00	0.00	0.00	0.00	0.00	787.66	393.83	575.06	287.96	4.89	-0.33	0.000

Site Number: 411256

Code: ANSI/TIA-222-G

© 2007 - 2017 by ATC IP LLC. All rights reserved.

Site Name: CANTON CT, CT

Engineering Number: OAA715611_C3_01

11/2/2017 1:53:37 PM

Customer: VERIZON WIRELESS

Load Case (0.9 - 0.2Sds) * DL + E EMAM Seismic (Reduced DL) Equivalent Modal Analysis Method

Calculated Forces

Seg Elev (ft)	Pu FY (-) (kips)	Vu FX (-) (kips)	Tu MY (ft-kips)	Mu MZ (ft-kips)	Mu MX (ft-kips)	Resultant Moment (ft-kips)	phi Pn (kips)	phi Vn (kips)	phi Tn (ft-kips)	phi Mn (ft-kips)	Total Deflect (in)	Rotation (deg)	Ratio
0.00	-36.31	-1.75	0.00	-169.36	0.00	169.36	5,907.57	2,953.79	12,233.7	6,125.97	0.00	0.00	0.034
5.00	-34.93	-1.72	0.00	-160.60	0.00	160.60	5,798.22	2,899.11	11,708.2	5,862.84	0.00	-0.01	0.033
10.00	-33.58	-1.67	0.00	-152.01	0.00	152.01	5,660.37	2,830.18	11,137.9	5,577.27	0.02	-0.02	0.033
15.00	-32.26	-1.62	0.00	-143.65	0.00	143.65	5,513.53	2,756.76	10,564.7	5,290.20	0.04	-0.03	0.033
20.00	-30.97	-1.57	0.00	-135.53	0.00	135.53	5,366.68	2,683.34	10,006.5	5,010.72	0.08	-0.04	0.033
25.00	-29.71	-1.52	0.00	-127.67	0.00	127.67	5,219.84	2,609.92	9,463.58	4,738.82	0.12	-0.05	0.033
30.00	-28.48	-1.47	0.00	-120.08	0.00	120.08	5,073.00	2,536.50	8,935.73	4,474.51	0.18	-0.06	0.032
35.00	-27.28	-1.41	0.00	-112.74	0.00	112.74	4,926.16	2,463.08	8,423.04	4,217.78	0.24	-0.07	0.032
40.00	-27.25	-1.41	0.00	-105.68	0.00	105.68	4,779.32	2,389.66	7,925.49	3,968.63	0.32	-0.08	0.032
40.13	-25.29	-1.32	0.00	-105.50	0.00	105.50	4,775.51	2,387.75	7,912.75	3,962.26	0.32	-0.08	0.032
45.00	-24.95	-1.30	0.00	-99.08	0.00	99.08	4,632.48	2,316.24	7,443.09	3,727.08	0.41	-0.09	0.032
45.88	-24.08	-1.26	0.00	-97.93	0.00	97.93	4,127.52	2,063.76	6,764.96	3,387.51	0.43	-0.09	0.035
50.00	-23.06	-1.22	0.00	-92.73	0.00	92.73	4,021.65	2,010.83	6,420.54	3,215.04	0.51	-0.10	0.035
55.00	-22.06	-1.18	0.00	-86.64	0.00	86.64	3,893.17	1,946.58	6,014.64	3,011.79	0.62	-0.11	0.034
60.00	-21.08	-1.14	0.00	-80.76	0.00	80.76	3,764.68	1,882.34	5,621.99	2,815.17	0.75	-0.13	0.034
65.00	-20.13	-1.12	0.00	-75.03	0.00	75.03	3,636.20	1,818.10	5,242.60	2,625.19	0.88	-0.14	0.034
70.00	-19.21	-1.12	0.00	-69.42	0.00	69.42	3,507.71	1,753.86	4,876.46	2,441.85	1.04	-0.15	0.034
75.00	-18.36	-1.12	0.00	-63.84	0.00	63.84	3,379.23	1,689.61	4,523.57	2,265.15	1.20	-0.17	0.034
79.67	-18.28	-1.12	0.00	-58.60	0.00	58.60	3,259.13	1,629.57	4,205.72	2,105.99	1.37	-0.18	0.033
80.00	-17.47	-1.13	0.00	-58.24	0.00	58.24	3,250.74	1,625.37	4,183.94	2,095.08	1.39	-0.18	0.033
83.00	-15.77	-1.16	0.00	-54.83	0.00	54.83	3,173.65	1,586.82	3,986.52	1,996.22	1.50	-0.19	0.032
84.34	-15.67	-1.17	0.00	-53.27	0.00	53.27	2,286.71	1,143.35	2,923.37	1,463.86	1.55	-0.19	0.043
85.00	-14.99	-1.19	0.00	-52.50	0.00	52.50	2,277.67	1,138.84	2,896.31	1,450.31	1.58	-0.19	0.043
90.00	-14.45	-1.21	0.00	-46.57	0.00	46.57	2,193.67	1,096.84	2,676.37	1,340.17	1.80	-0.21	0.041
94.00	-12.12	-1.27	0.00	-41.74	0.00	41.74	2,120.25	1,060.13	2,499.32	1,251.52	1.98	-0.23	0.039
95.00	-11.49	-1.29	0.00	-40.47	0.00	40.47	2,101.90	1,050.95	2,456.00	1,229.83	2.03	-0.23	0.038
100.00	-10.99	-1.30	0.00	-34.01	0.00	34.01	2,010.12	1,005.06	2,245.10	1,124.22	2.28	-0.25	0.036
104.00	-9.43	-1.31	0.00	-28.80	0.00	28.80	1,936.70	968.35	2,083.19	1,043.15	2.50	-0.27	0.032
105.00	-8.86	-1.31	0.00	-27.49	0.00	27.49	1,918.35	959.17	2,043.66	1,023.35	2.56	-0.27	0.031
110.00	-8.31	-1.29	0.00	-20.95	0.00	20.95	1,826.57	913.29	1,851.70	927.22	2.85	-0.28	0.027
115.00	-8.29	-1.29	0.00	-14.51	0.00	14.51	1,734.80	867.40	1,669.20	835.84	3.15	-0.30	0.022
115.22	-7.76	-1.25	0.00	-14.23	0.00	14.23	1,730.76	865.38	1,661.38	831.93	3.17	-0.30	0.022
118.80	-7.66	-1.24	0.00	-9.76	0.00	9.76	956.25	478.12	907.22	454.29	3.39	-0.31	0.030
120.00	-3.47	-0.79	0.00	-8.28	0.00	8.28	947.93	473.97	887.63	444.47	3.47	-0.31	0.022
125.00	-3.16	-0.74	0.00	-4.31	0.00	4.31	912.05	456.02	806.99	404.09	3.80	-0.32	0.014
130.00	-0.27	-0.09	0.00	-0.63	0.00	0.63	874.32	437.16	728.52	364.80	4.13	-0.32	0.002
135.00	-0.17	-0.06	0.00	-0.18	0.00	0.18	834.76	417.38	652.50	326.73	4.47	-0.32	0.001
138.00	0.00	0.00	0.00	0.00	0.00	0.00	809.68	404.84	607.85	304.38	4.67	-0.32	0.000
140.00	0.00	0.00	0.00	0.00	0.00	0.00	787.66	393.83	575.06	287.96	4.81	-0.32	0.000

Site Number: 411256

Code: ANSI/TIA-222-G

© 2007 - 2017 by ATC IP LLC. All rights reserved.

Site Name: CANTON CT, CT

Engineering Number: OAA715611_C3_01

11/2/2017 1:53:37 PM

Customer: VERIZON WIRELESS

Analysis Summary

Load Case	Reactions						Max Usage	
	Shear FX (kips)	Shear FZ (kips)	Axial FY (kips)	Moment MX (ft-kips)	Moment MY (ft-kips)	Moment MZ (ft-kips)	Elev (ft)	Interaction Ratio
1.2D + 1.6W	26.15	0.00	52.49	0.00	0.00	2713.40	45.88	0.47
0.9D + 1.6W	26.13	0.00	39.36	0.00	0.00	2685.64	45.88	0.46
1.2D + 1.0Di + 1.0Wi	8.40	0.00	89.48	0.00	0.00	890.31	84.34	0.17
(1.2 + 0.2Sds) * DL + E ELFM	1.90	0.00	52.18	0.00	0.00	202.13	45.88	0.04
(1.2 + 0.2Sds) * DL + E EMAM	1.75	0.00	52.18	0.00	0.00	171.56	84.34	0.05
(0.9 - 0.2Sds) * DL + E ELFM	1.90	0.00	36.31	0.00	0.00	199.69	45.88	0.04
(0.9 - 0.2Sds) * DL + E EMAM	1.75	0.00	36.31	0.00	0.00	169.36	84.34	0.04
1.0D + 1.0W	6.80	0.00	43.77	0.00	0.00	701.53	84.34	0.13

Site Number: 411256

Code: ANSI/TIA-222-G

© 2007 - 2017 by ATC IP LLC. All rights reserved.

Site Name: CANTON CT, CT

Engineering Number: OAA715611_C3_01

11/2/2017 1:53:37 PM

Customer: VERIZON WIRELESS

Base Summary

Reactions

Original Design			Analysis			Moment Design %
Moment (kip-ft)	Axial (kip)	Shear (kip)	Moment (kip-ft)	Axial (kip)	Shear (kip)	
3,921.80	41.90	38.70	2,713.40	89.48	26.15	51.25

Base Plate

Yield (ksi)	Thick (in)	Width (in)	Style	Poly Sides	Clip Len (in)	Effective Len (in)	Mu (kip-in)	Phi Mn (kip-in)	Ratio
60.0	2.250	66.000	Round	0	0.00	8.093	345.81	553.13	0.63

Anchor Bolts

Bolt Circle	Num Bolts	Bolt Type	Bolt Dia (in)	Yield (ksi)	Ultimate (ksi)	Arrange	Cluster Dist (in)	Start Angle (deg)	Compression			Tension		
									Force (kip)	Allow (kip)	Ratio	Force (kip)	Allow (kip)	Ratio
60.00	20	2.25" 18J	2.25	75.00	100.00	Radial	0.00	0.0	113.01	260.00	0.44	104.06	260.00	0.41

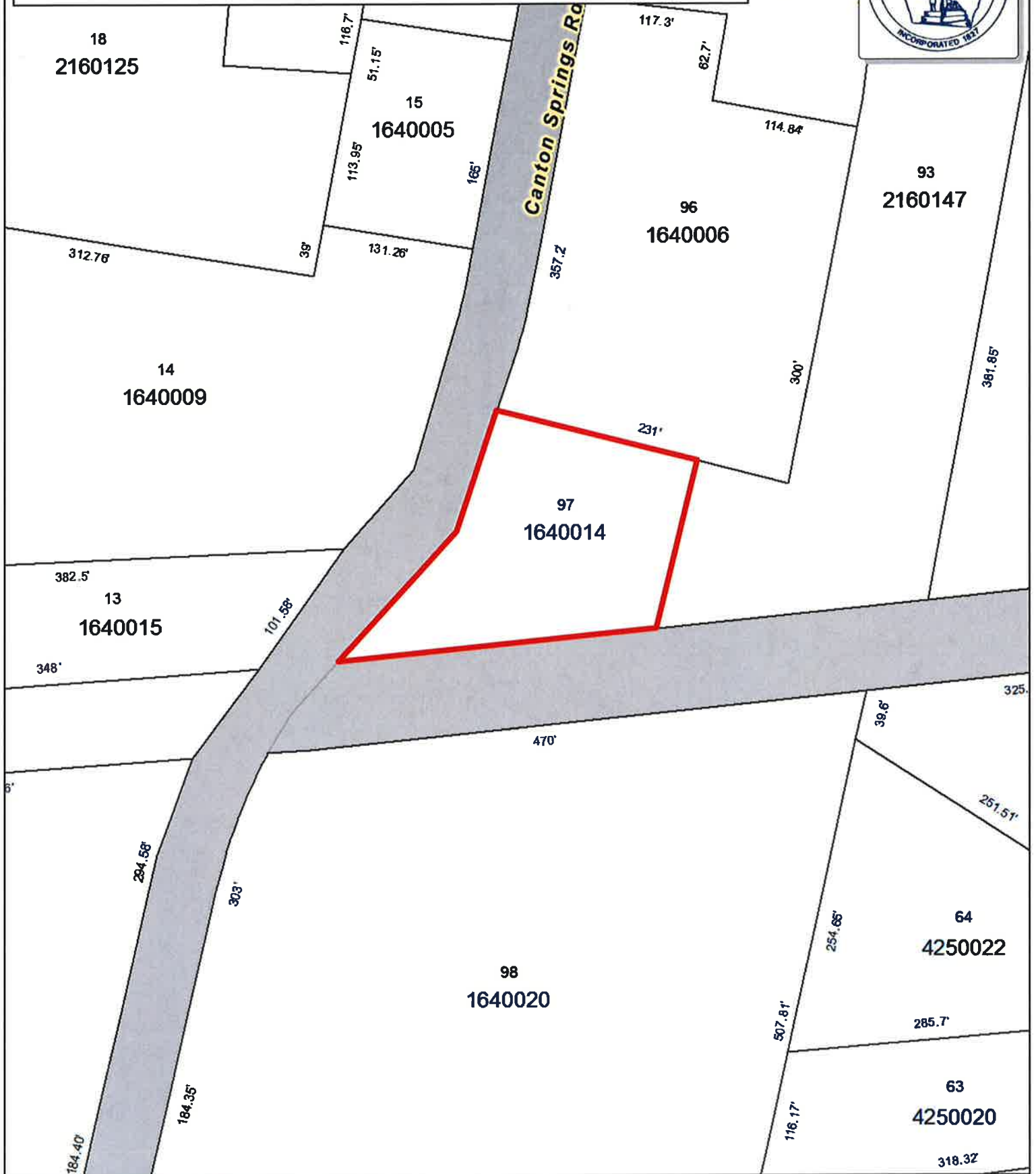
ATTACHMENT 4

Town of Canton, Connecticut - Assessment Parcel Map

Unique ID: 1640014

Address: 14 CANTON SPRINGS ROAD

94
2160145



Approximate Scale:
1 inch = 100 feet

Disclaimer:
This map is for informational purposes only.
All information is subject to verification by any user.
The Town of Canton and its mapping contractors
assume no legal responsibility for the information contained herein.

Map Produced
May 2017

--- Sublot 4850007 Parcel ID
--- Easement 89' Dimension
--- Misc

The Assessor's office is responsible for the maintenance of records on the ownership of properties. Assessments are computed at 70% of the estimated market value of real property at the time of the last revaluation which was 2013.



TOWN OF CANTON CT

Information on the Property Records for the Municipality of Canton was last updated on 11/7/2017.

Property Summary Information

[Parcel Data And Values](#)
 [Building](#) ▼
 [Sales](#)
 [Google Map](#)

Parcel Information

Location:	14 CANTON SPRINGS ROAD	Property Use:	Automotive	Primary Use:	Parking Structure
Unique ID:	1640014	Map Block Lot:	31/164/0014	Acres:	0.49
490 Acres:	0.00	Zone:	AR-1	Volume / Page:	059 /433
Developers Map / Lot:		Census:			

Value Information

	Appraised Value	70% Assessed Value
Land	36,750	25,730
Buildings	442,100	309,470

	Appraised Value	70% Assessed Value
Detached Outbuildings	0	0
Total	478,850	335,200

Owner's Information

Owner's Data

CANTON VOLUNTEER FIRE
DEPARTMENT
P.O. BOX 104
CANTON CT 06019

[Back To Search \(JavaScript:window.history.back\(1\);\)](#)

[Print View \(PrintPage.aspx?towncode=023&uniqueid=1640014\)](#)

Information Published With Permission From The Assessor

ATTACHMENT 5



Certificate of Mailing — Firm

Name and Address of Sender

Kenneth C. Baldwin, Esq.
Robinson & Cole LLP
280 Trumbull Street
Hartford, CT 06103

TOTAL NO.
of Pieces Listed by Sender

3

TOTAL NO.
of Pieces Received at Post Office™

3

Affix Stamp Here

Postmark with Date of Receipt.

neopost
11/09/2017
US POSTAGE \$002.38
ZIP 06103
041L12203360

Postmaster, per (name of receiving employee)

[Handwritten Signature]

USPS® Tracking Number
Firm-specific Identifier

Address

(Name, Street, City, State, and ZIP Code™)

Postage

Fee

Special Handling

Parcel Airlift

1.

Leslee Hill, First Selectman
Town of Canton
4 Market Street
Collinsville, CT 06022

2.

Neil S. Pede, AICP
Director of Planning and Community Development
Town of Canton
4 Market Street
Collinsville, CT 06022

3.

Canton Volunteer Fire Company Inc.
14 Canton Springs Road
Canton, CT 06019

4.

5.

6.

