

FAX

Date 10/14/99

Number of pages including cover sheet 4

TO: Steve Levine
CT. Siting Comm.

Phone 860-827-2944
Fax Phone 860-827-2950

FROM: Lisa M. Houlihan
Town of Canton
4 Market Street
Collinsville, CT 06022

Phone 860-693-7856
Fax Phone 860-693-7853

CC:

REMARKS: Urgent For your review Reply ASAP Please Comment

Hello Steve,

I hope the attached will assist you.

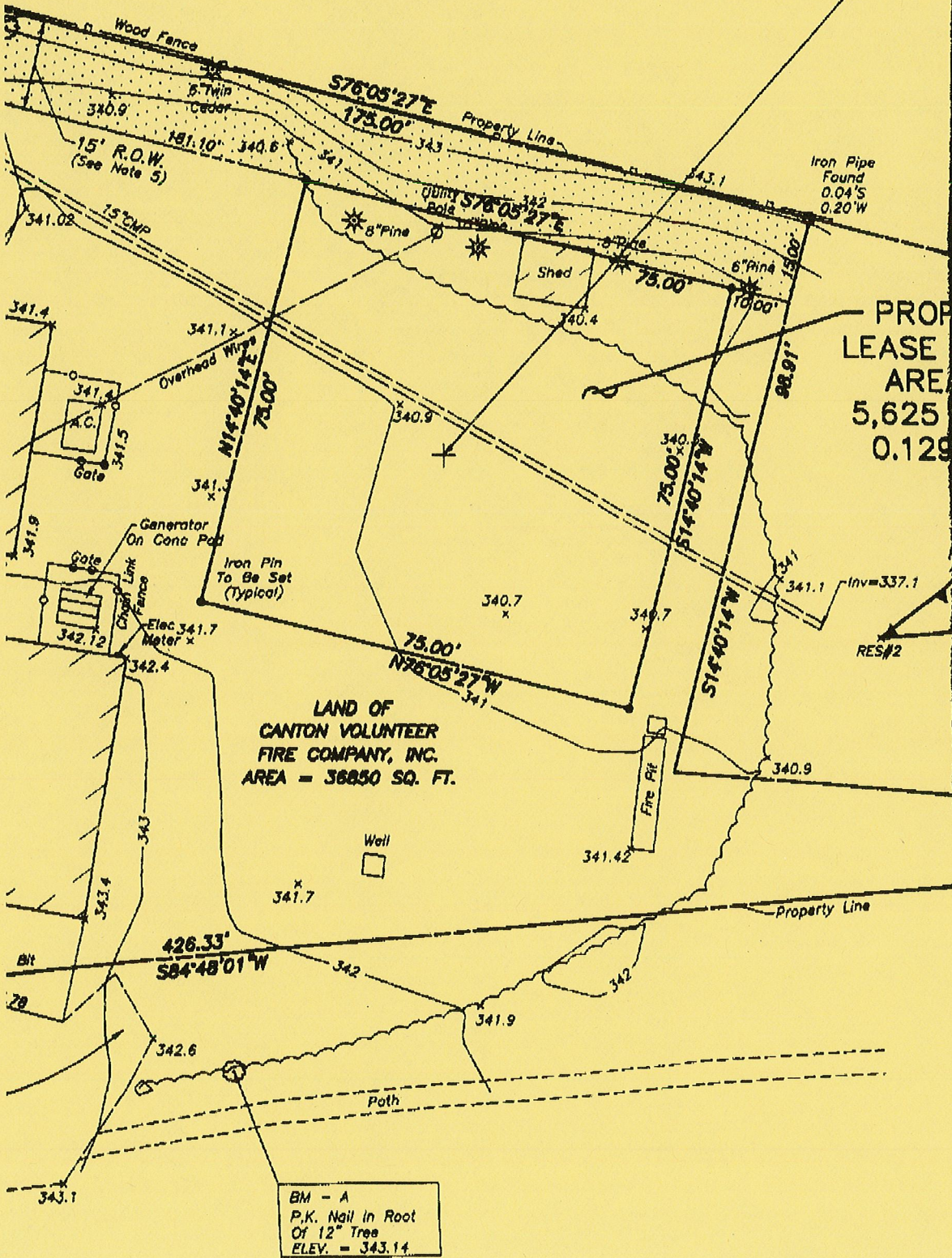
Please do not hesitate to call if you have any questions or if I may be of any further assistance.

Sincerely,

L.M.H.

PROPOSED TOWER LOCATION
 LATITUDE 41°-49'-22.0"
 LONGITUDE 72°-53'-44.2"
 NAD 1927
 ELEV = 341'
 NGVD 1929

Canton Baptist
 Burying Association, Inc.

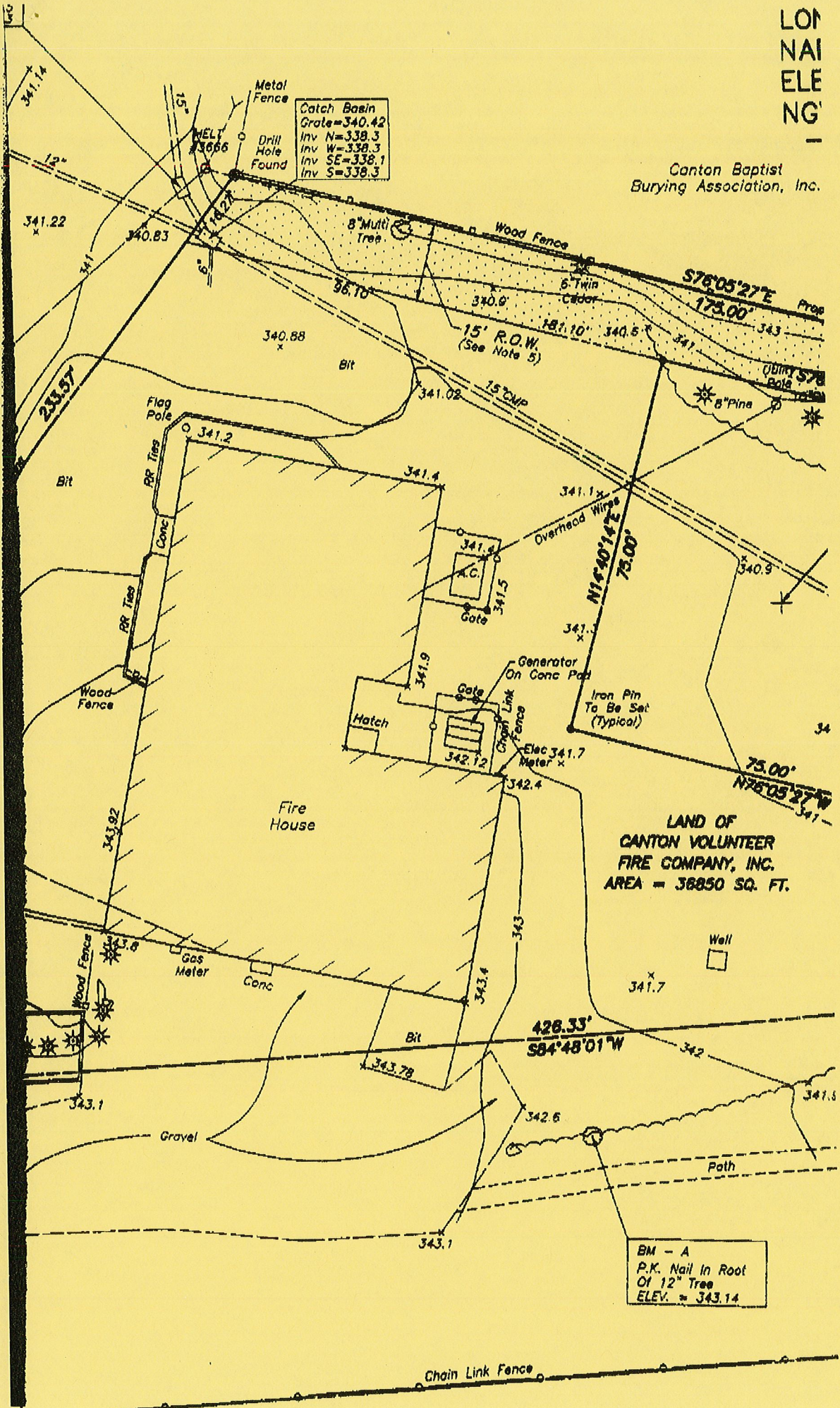


PROPOSED
 LEASE
 AREA
 5,625
 0.129

BM - A
 P.K. Nail in Root
 Of 12\" Tree
 ELEV. = 343.14

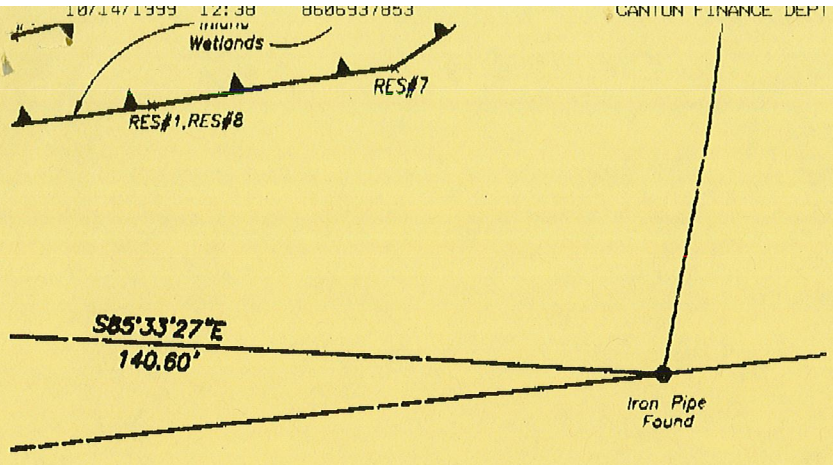
LONG
NAI
ELE
NG'

Canton Baptist
Burying Association, Inc.



LAND OF
CANTON VOLUNTEER
FIRE COMPANY, INC.
AREA = 38850 SQ. FT.

BM - A
P.K. Nail In Root
Of 12" Tree
ELEV. = 343.14



N/F
Town Of Canton

TOWN OF CANTON
ZONING COMMISSION

FILE NO. 218 APPLICATION NO. 795

RECEIVED
APPROVED
C

217.99
[Signature]
CHAIRMAN

TOWN OF CANTON, CONNECTICUT
INLAND RESOURCES AGENCY
FILE NO. 1295631
APPROVED 24.99
APPROVED DATE: 5-19-99
[Signature]
CHAIRMAN OR SECRETARY

No.	Date	Revision description
6	01-14-99	Proposed Lease Parcel Moved
5	12-01-98	Wetland Certification Added
4	11-19-98	Proposed Lease Parcel Moved
3	11-10-98	Proposed Tower Location Revised
2	10-20-98	Inland Wetlands And Tower Location Added
1	10-14-98	Proposed Lease Parcel Added

Embossed seal

URS Greiner

Surveying and Mapping by:
URS Greiner, Inc. A·E·S
500 Enterprise Drive, P.O. Box 4002
Rocky Hill, Connecticut 06067-4002
Tel. (860) 529-8882

Scale: 1" = 20'
Date: SEPTEMBER 1998

Field book # 1398-65	Crew Chief G. NEVIN	Search # 3625	Project # F30172421
Computed by S. KALINKA	Drawn by S. KALINKA	Checked by M6w	Map file # T140-57

NO. 14206
ORIGINAL
SURVEYOR.



STATE OF CONNECTICUT

CONNECTICUT SITING COUNCIL

Ten Franklin Square
New Britain, Connecticut 06051

Phone: (860) 827-2935

Fax: (860) 827-2950

October 12, 1999

Sandy M. Carter
Manager - Regulatory
Bell Atlantic Mobile
20 Alexander Drive
Wallingford, CT 06492

Peter W. van Wilgen
Director - Real Estate Operations
Springwich Cellular Limited Partnership
500 Enterprise Drive
Rocky Hill, CT 06067-3900

RE: EM-BAM/SCLP-023-990917 - Cellco Partnership d/b/a Bell Atlantic Mobile and Springwich Cellular Limited Partnership notice of intent to modify an existing telecommunications tower located at 14 Canton Springs Road in Canton, Connecticut.

Dear Ms. Carter and Mr. van Wilgen:

At a public meeting held on October 8, 1999, the Connecticut Siting Council (Council) ruled that the proposed use of this existing tower would not cause a significant change or alteration in the physical and environmental characteristics of the site, and pursuant to Section 16-50j-72 (c) would constitute a regulatory exemption.

The proposed modifications are to be implemented as specified here, in your notice dated September 17, 1999, and in additional information dated September 22, 1999. The modifications are in compliance with the exception criteria in Section 16-50j-72 (c) of the Regulations of Connecticut State Agencies as changes to an existing non-facility tower that have received all municipal zoning approvals and building permits and that would not increase tower height, extend the boundaries of the tower site, increase noise levels at the tower site boundary by six decibels or more, and increase the total radio frequency electromagnetic radiation power density measured at the tower site boundary to or above the standard adopted by the State Department of Environmental Protection pursuant to General Statutes § 22a-162. This facility has been carefully modeled to ensure that radio frequency emissions are conservatively below State and federal standards applicable to the frequency now used on this tower. Any additional change to this facility will require explicit notice to this agency pursuant to Regulations of Connecticut State Agencies Section 16-50j-73. Such notice shall include all relevant information regarding the proposed change with cumulative worst-case modeling of radio frequency exposure at the closest point of uncontrolled access to the tower base, consistent with Federal Communications Commission, Office of Engineering and Technology, Bulletin No. 65. Any deviation from this format may result in the Council implementing enforcement proceedings pursuant to General Statutes § 16-50u including, without limitation, imposition of expenses resulting from such failure and of civil penalties in an amount not less than one thousand dollars per day for each day of construction or operation in material violation.

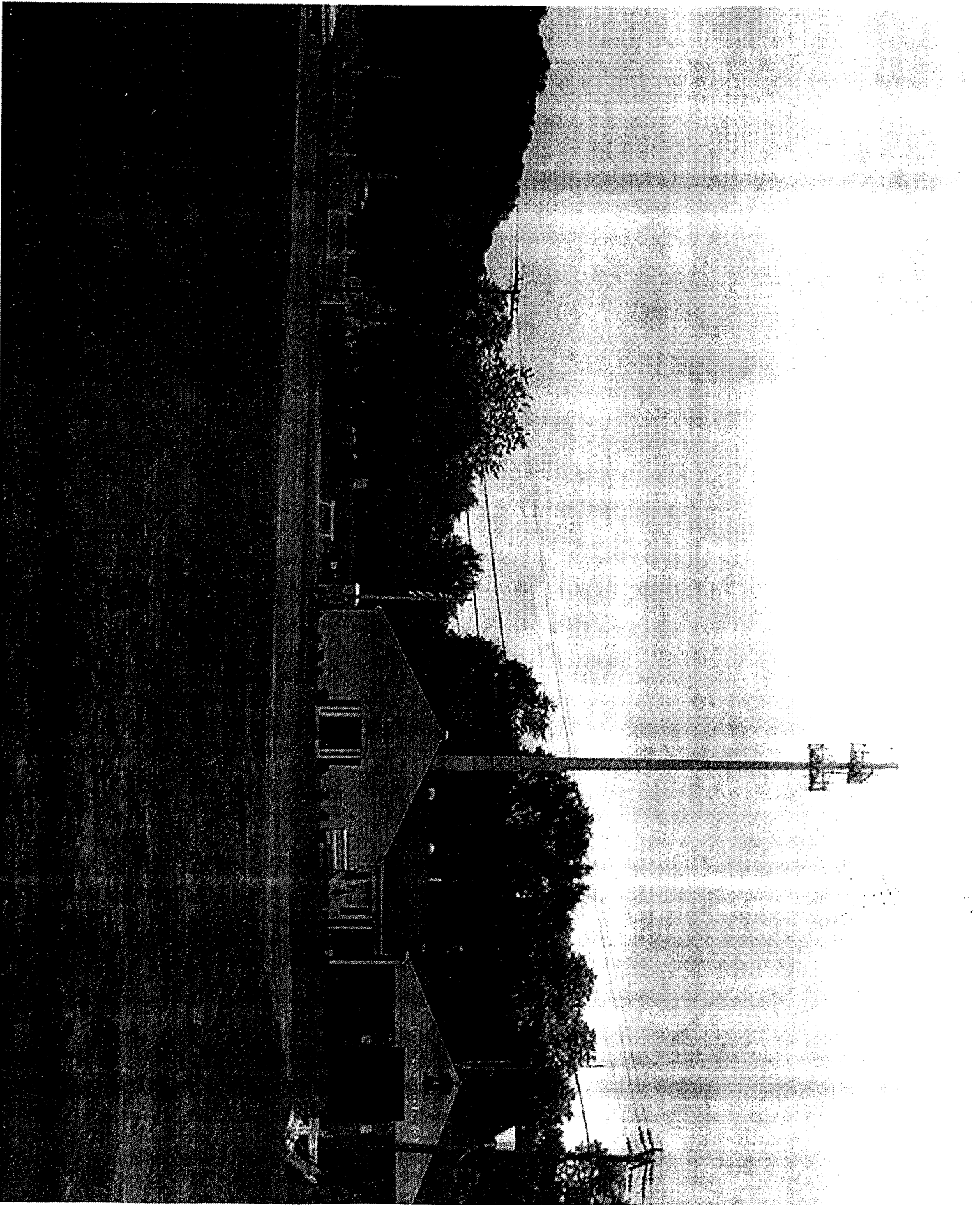
Thank you for your attention and cooperation.

Very truly yours,


Mortimer A. Gelston
Chairman

MAG/SL/sll

cc: Honorable Kathleen C. Corkum, First Selectman, Town of Canton
Eric Barz, Town Planner, Town of Canton



Canton
14 Canton Springs Rd
EM-bam/scjp-023-990917
September 28, 1999

September 22, 1999

RECEIVED

To: Mr. Steve Levine, Siting Analyst
Connecticut Siting Council

SEP 23 1999

Re: Request for Information
Canton Cell Site

**CONNECTICUT
SITING COUNCIL**

As per your phone inquiry on September 21, 1999 in reference to the filing by Springwch Cellular Limited Partnership and Bell Atlantic Mobile to co-locate on an existing tower located in Canton, Connecticut, I am submitting the following information and answers:

1. Is the tower designed for the number of carriers and will it require extra strengthening?

Answer:

The tower is designed for five carriers in addition to the Town's equipment and will not require additional strengthening. I have a copy of the structure design and I am submitting it for your information and file.

2. What are the abutting land uses to the facility?

Answer:

The property of the Volunteer Fire Company is located in Canton's B-1 (Business) Zone District. The surrounding land uses in the area include: a cemetery use to the north; vacant land zoned Special Business to the east and west and partially developed Light Industrial zoned land to the southwest. The Plan of Development's land use plan for the area surrounding the Project Site includes: commercial uses to the north and northeast; industrial uses to the south, southeast and southwest and private institution open-space reserves directly to the north (cemetery). The Fire Company property is designated a community facility use.

3. Clarify the position on the tower of the carriers and the power density calculation.

Answer:

The correct position of the carriers is shown on page 2 of the submitted site plan. The platform on which Springwch Cellular Limited Partnership will mount their antennas is at the 130' level of the tower. Bell Atlantic Mobile will mount its platform for its antennas at the 120' level of the platform. The center of radiation for SCLP is 130' and the center of radiation for BAM is 120'. These two heights were transposed in the original application and should be corrected.

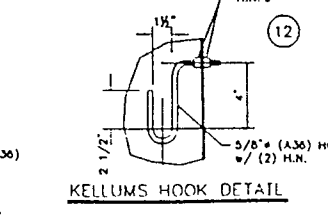
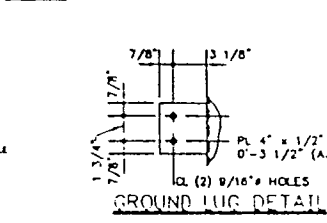
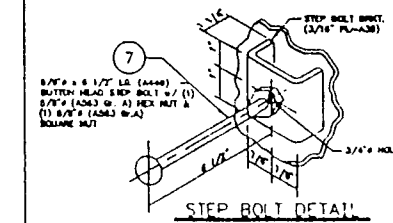
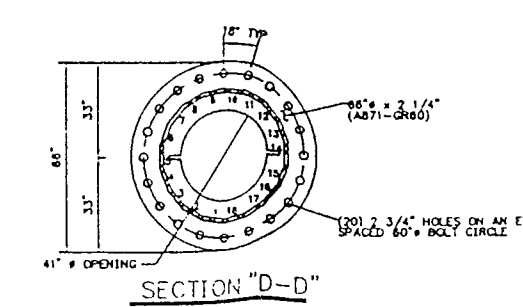
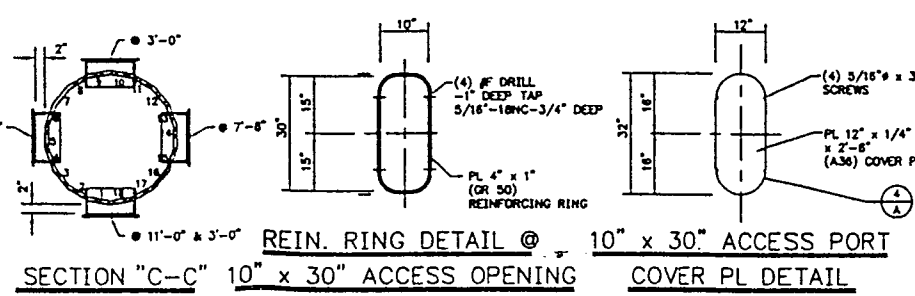
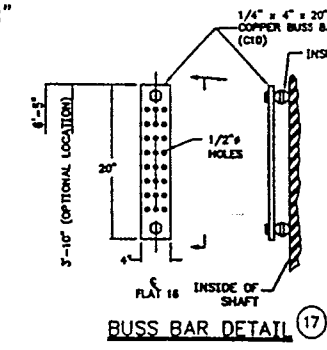
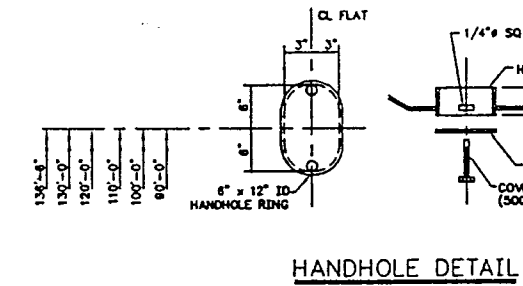
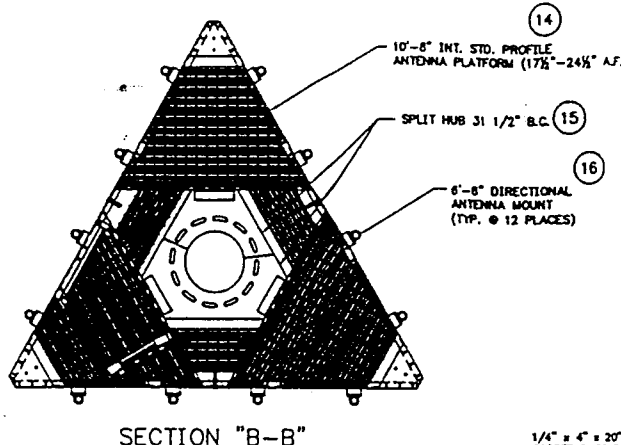
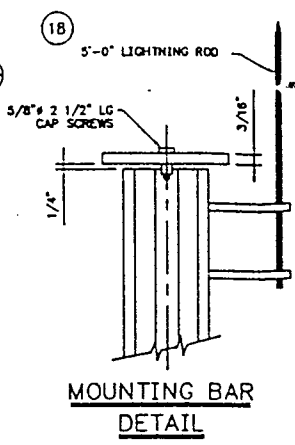
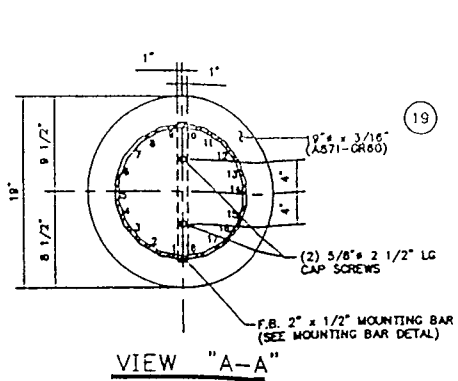
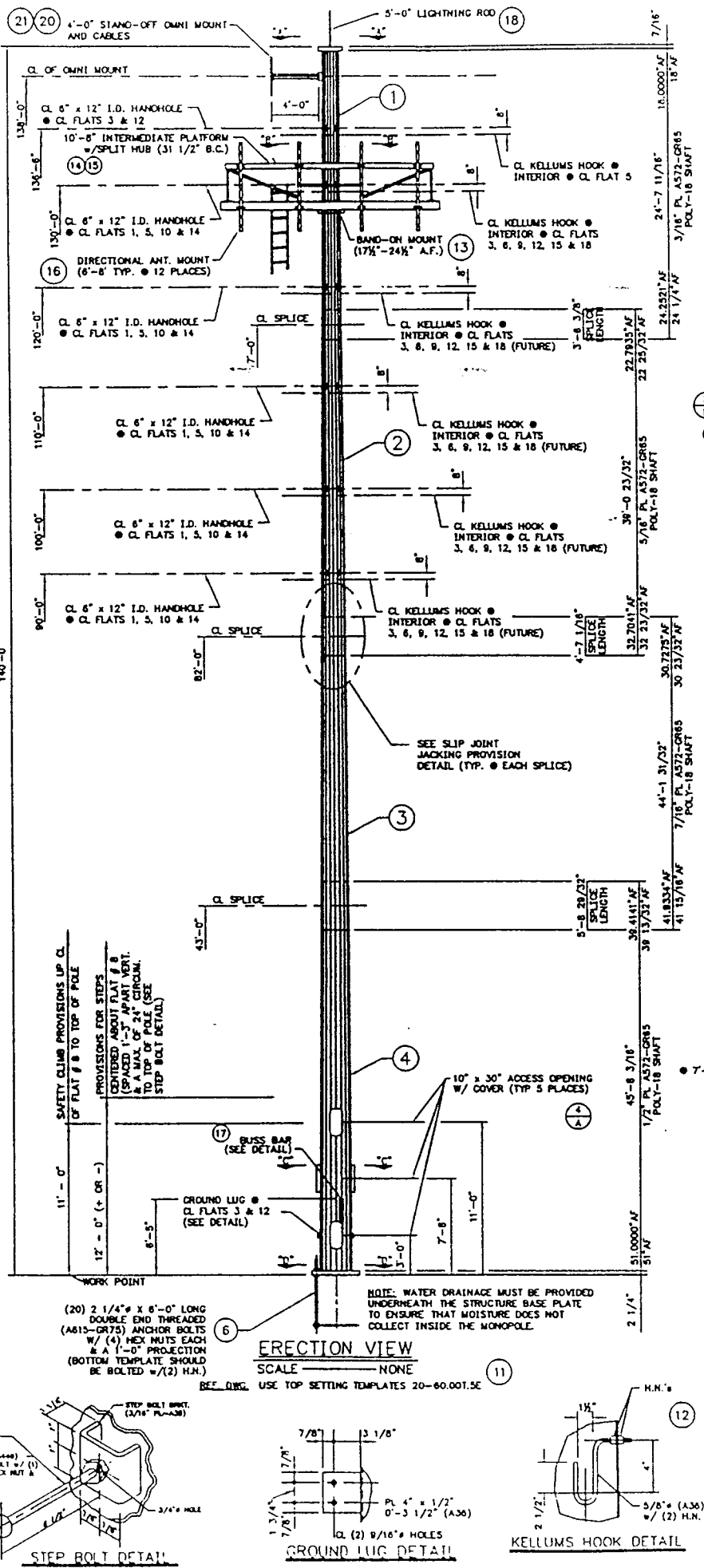
The power density calculation was done correctly placing SCLP at the 130' level of the tower and BAM at the 120' level of the tower.

Please contact me if you require further information or have any questions.

Sandy Carter
Sandy Carter, Regulatory Manager
Bell Atlantic Mobile

cc: Peter van Wilgen

**STRUCTURE & FOUNDATION
DESIGN CALCULATIONS
140' MONOPOLE
SITE: CANTON
EEI JOB #: 4960**



STATE OF CONNECTICUT
MICHAEL R. MOREL
No. 21220
LICENSED PROFESSIONAL ENGINEER

ASSEMBLY MARKING PROCEDURE
EACH INDIVIDUAL ASSEMBLY SHALL HAVE A METAL TAG WELDED TO IT WHICH WILL BE ENGRAVED WITH THE ASSEMBLY MARK NO. AS SHOWN IN THE MATERIAL BLOCK. (MINIMUM OF 5/8" HIGH LETTERS)

MATERIAL REQ'D. PER ASSEMBLY

GALV. WT.	QTY.	ITEM	MK. NO.	DESCRIPTION
--	1	(1)	--	SHAFT ASSY. (TOP SECTION)
--	1	(2)	--	SHAFT ASSY. (UP. MID. SECTION)
--	1	(3)	--	SHAFT ASSY. (LOW. MID. SECTION)
--	1	(4)	--	SHAFT ASSY. (BOTTOM SECTION)
25.00	5	(A)	C12669	12" x 32" ACCESS PORT COVER PL w/ (4) BOLT (500822) & (4) WASHERS (500234)
		(5)		HARDWARE AS FOLLOWS:
5.51	22	(A)	GS14842	8" x 12" HANDHOLE COVER PLATE w/ (2) BOLTS (500376)
	2	(B)		5/8" x 2 1/2" LG. CAP SCREW
101.46	20	(6)	AB0600E-4	2 1/4" x 6'-0" LG. (A615-GR75) ANCHOR BOLTS w/ (4) HEX NUTS (A194-GR24), EACH
1.08	--	(7)	S10006	5/8" x 8 1/2" LG. BUTT HEAD STEP BOLT w/ (1) HEX & (1) SQUARE NUT EACH
	1	(8)		STRUCTURE ASSEMBLY AND ERECTION PROCEDURES
	1	(9)	DBI-130U	130'-0" SAFETY CLIMB KIT
	1	(10)	DBI-10L	10'-0" SAFETY CLIMB KIT
	1	(11)	L2010	SAFETY CLIMB HARNESS
147.77	2	(11)	20-60.00T.5E	TOP SETTING TEMPLATE
1.50	7	(12)	GS13625	5/8" KELLUMS HOOK ASSY.
305.15	1	(13)	K10684	BAND-ON PLATFORM MOUNT (17 1/2" - 24 1/2" A.F. AND A 3 1/2" BOLT CIRCLE)
1331.79	1	(14)	K10495	10'-8" INTERMEDIATE STANDARD PLATFORM
354.27	1	(15)	K10500	SPLIT HUB FOR 10'-8" PLATFORM WITH A 3 1/2" BOLT CIRCLE
34.44	12	(16)	K10006	6'-8" DIRECTIONAL ANTENNA MOUNT
7.50	1	(17)	K10062	BUSS BAR KIT
21.00	1	(18)	K10122	5'-0" LIGHTNING ROD
--	1	(19)	--	REMOVABLE COVER PLATE
--	1	(20)	--	CABLED-ON ANTENNA MOUNT
3.00	2	(21)	CBL4960-138	3/8" x 36 3/4" LG. CABLE WIRE w/ (2) H.N., (2) F.W., (2) P.H. & (4) B.W.
	1	(22)		STRUCTURE IDENTIFICATION TAG

TOTAL GALV. STR. & ACCES. WT. ---#

TOTAL ANCHOR BOLT & TEMPLATE WT. ---#

- GENERAL NOTES
- 1) ALL WELDS SHALL BE IN ACCORDANCE WITH A.I.S.I. S.L.I.
 - 2) LONGITUDINAL SEAM WELDS IN FEMALE SECTION OF THE SLIP JOINT SHALL BE FULL PENETRATION WELDS.
 - 3) FOR PROPER SHAFT ALIGNMENT, A 2" HORIZONTAL WELD BEAD AND A MARK NUMBER ARE POSITIONED ON EACH SHAFT AT EACH SPlice. THE 2" HORIZONTAL WELD BEADS ARE ON MATCHING CORNERS. THE MARK NUMBER IS ON AN ADJACENT FLAT. THE HORIZONTAL WELD BEAD CORNERS SHALL BE ALIGNED TOP TO BOTTOM OF THE POLE. MATCH NUMBERS SHALL BE MATCHED FOR EACH SIDE.
 - 4) FIELD ASSEMBLY NUTS (1" DIA) ARE LOCATED ON OPPOSING SECTION FLATS ABOVE AND BELOW SPlices FOR JACKING SHAFTS TOGETHER.
 - 5) THE BOTTOM OF THE UPPER SECTION SHALL BE TELESCOPED IN THE FIELD TO WITHIN 12" OF THE WELD ORIENTATION MARK ON THE LOWER SECTION.
 - 6) A SLOT 1 1/2" x 4" IS REQUIRED AT THE TOP OF THE BOTTOM SECTION AND AT THE BOTTOM OF THE TOP SECTION FOR HANDLING DURING GALVANIZING.
 - 7) GAP BETWEEN TOP OF FOOTING AND BOTTOM BASE PLATE SHALL BE FILLED WITH A NON-SHROUD GROUT.
 - 8) POLES SHALL BE HOT DIP GALVANIZED AFTER FABRICATION.
 - 9) POLE TAPER = 0.2537 IN./FT.

DESIGN NOTES

DESIGNED IN ACCORDANCE WITH TIA/EIA 222-F
90 MPH BASIC WIND SPEED WITH
1/2" SIMULTANEOUS RADIAL ICE
CASE I - 90 MPH BASIC WIND SPEED
WITH 1/2" SIMULTANEOUS ICE

THIS DRAWING IS CONFIDENTIAL AND MAY NOT BE LOANED, REPRODUCED, COPIED EITHER WHOLLY OR IN PART, OR MADE PUBLIC IN ANY MANNER WITHOUT THE WRITTEN CONSENT OF ENGINEERS ENDOAVORS INC.-ALL RIGHTS OF DESIGN OR INVENTION ARE RESERVED.

SITE: CANTON HARTFORD CO., CT

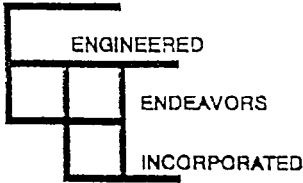
NO.	DESCRIPTION	DATE	BY	CHK.	APP.
1	STRUCTURE RE-DESIGN	5/7/88	S.S.		

ENGINEERED • 7610 Jenther Drive Mentor, Ohio 44060
ENDEAVORS • (440) 918-1101
INCORPORATED

140'-0" MONOPOLE

GS51426

FTI WILL NOT HONOR ANY BACKCHARGES WHICH HAVE NOT RECEIVED PRIOR WRITTEN AUTHORIZATION phone (440) 918-1101



ENGINEERED

ENDEAVORS

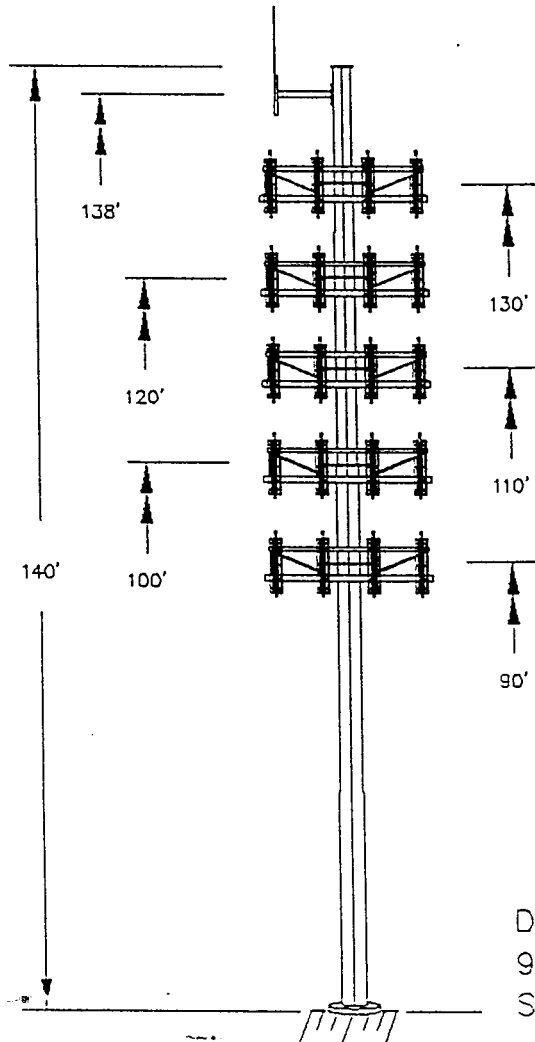
INCORPORATED

By L. PADGETT 5/13/99
 Date
 Checked 4960
 Job/Quote No.

Structure 140' MONOPOLE

SITE LOCATION - HARTFORD COUNTY, CT
 SITE NAME - CANTON

REVISION 1



ANTENNA LOADING:

- (1) OMNIDIRECTIONAL ANTENNA (5 sf)
- (1) 4' SIDE ARM MOUNT @ 138'
- (12) ALP 9212 DIRECTIONAL ANTENNAS STANDARD AMPS PLATFORM @ 130'
- (12) ALP 9212 DIRECTIONAL ANTENNAS STD AMPS PLATFORM @ 120' (FUTURE)
- (12) ALP 9212 DIRECTIONAL ANTENNAS STANDARD PLATFORM @ 110' (FUTURE)
- (12) ALP 9212 DIRECTIONAL ANTENNAS STANDARD PLATFORM @ 100' (FUTURE)
- (12) ALP 9212 DIRECTIONAL ANTENNAS STANDARD PLATFORM @ 90' (FUTURE)

DESIGN NOTES:

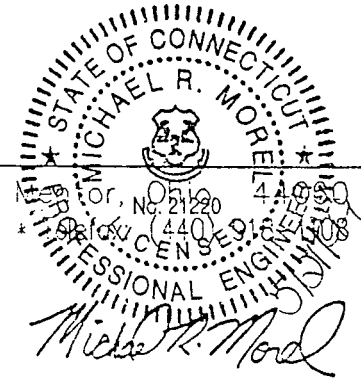
DESIGNED IN ACCORDANCE WITH TIA/EIA 222 F
 90 MPH BASIC WIND SPEED WITH 1/2"
 SIMULTANEOUS RADIAL ICE

CASE I - 90 MPH BASIC WIND SPEED WITH
 1/2" SIMULTANEOUS ICE

NOTE: IT IS THE RESPONSIBILITY
 OF THE PURCHASER TO VERIFY
 THAT THE WIND LOADS AND DESIGN
 CRITERIA SPECIFIED MEET THE REQUIREMENTS
 OF ALL LOCAL BUILDING CODES

ENGINEERED ENDEAVORS, INC.

7610 Jenther Drive * New Britain, CT 06110 440-950-5000
 Telephone: (440) 918-1101 * Office (440) 918-1108



Engineered Endeavors Inc.

7610 Jenther Drive
Mentor, Ohio 44060
Tel (440) 918-1101 Fax (440) 918-1108

Communications Structure Nonlinear Analysis and Design Program

10:56:51 05-13-1999
Revision 1.2 - 4/22/98
Engineer: L. PADGETT

Job Name 4960, REVISION 1
Structure 140' MONOPOLE
Location HARTFORD COUNTY, CT
Site CANTON

OD BOT	OD TOP	NUM. SIDES	THICK INCH	TAPER IN/FT	LENGTH FT	JOINT INCH	JOINT TYPE	YIELD KSI	WEIGHT LBS	JOINT HEIGHT
24.24	18.00	18	0.1875	0.252	24.79	43.00	SLIP	65.0	1038.	117.00
32.69	22.84	18	0.3125	0.252	39.13	56.00	SLIP	65.0	3581.	82.00
41.90	30.77	18	0.4375	0.252	44.21	69.00	SLIP	65.0	7407.	43.00
51.00	39.45	18	0.5000	0.252	45.88	0.00	BASEPL	65.0	10945.	0.00
TOTAL TUBE WEIGHT								22971.	POUNDS	
POLE SHAFT LENGTH								140.00	FEET	

E = 29600.0 KSI

UNIT WGT = 0.283 LBS/CU IN

AISC constants are used for stress reductions.

TUBE SECTIONS HAVE 18 SIDES AND ARE TREATED AS ROUND

Internal bend radius = 3 X T

Tube diameters are measured flat to flat.

Tube diameters are increased by 1.020 for wind across points.

Drag coefficients are increase by 1.300 for steps on the pole.

AISC Tube Shape Coefficient of 1.000 is applied.

ORIGINAL DATA FILE NAME H:\LAP\JOBS4\4960-140

REVISED DATA FILE NAME H:\LAP\JOBS4\4960-140

APPURTENANCES

DESCRIPTION	NUM.	ELEV.	Kz	< WITHOUT ICE >			< WITH ICE >			Ca	FACTOR
				AREA	WGT	Ca	AREA	WGT	Ca		
6' ARM (4" SQ. X 1/4	1	138.	1.505	2.00	80.	2.0000	2.50	160.	2.0000	1.00	
OMNI ANTENNA	1	148.	1.535	3.33	40.	1.8000	5.00	70.	1.8000	1.00	
ALP 9212-N	12	130.	1.480	4.33	27.	1.4000	4.78	55.	1.4000	0.75	
STD AMPS PLATFORM	1	130.	1.480	33.75	2000.	1.0000	42.20	3000.	1.0000	1.00	
ALP 9212-N	12	120.	1.446	4.33	27.	1.4000	4.78	55.	1.4000	0.75	
STD AMPS PLATFORM	1	120.	1.446	33.75	2000.	1.0000	42.20	3000.	1.0000	1.00	
ALP 9212-N	12	110.	1.411	3.90	27.	2.0000	4.24	55.	2.0000	0.75	
STD AMPS PLATFORM	1	110.	1.411	33.75	2000.	1.0000	42.20	3000.	1.0000	1.00	
ALP 9212-N	12	100.	1.373	3.90	27.	2.0000	4.24	55.	2.0000	0.75	
STD AMPS PLATFORM	1	100.	1.373	33.75	2000.	1.0000	42.20	3000.	1.0000	1.00	
ALP 9212-N	12	90.	1.332	3.90	27.	2.0000	4.24	55.	2.0000	0.75	
STD AMPS PLATFORM	1	90.	1.332	33.75	2000.	1.0000	42.20	3000.	1.0000	1.00	

LOAD CASE 1

90 MPH BASIC WIND WITH ICE

DEAD LOAD FACTOR 1.00 WIND PSF REDUCTION 1.00 RADIAL ICE 0.50 IN.

WIND VELOCITY 90 BOTTOM 20.91 PSF TOP 31.54 PSF
 MAX BASE ROTATION 0.00 DEG

APPLIED APPURTENANCE FORCES

	ELEVATION FT	WEIGHT KIPS	WIND KIPS
6' ARM (4" SQ. X 1/4")	138.00	0.160	0.264
OMNI ANTENNA	148.00	0.070	0.484
ALP 9212-N	130.00	0.660	3.123
STD AMPS PLATFORM	130.00	3.000	2.188
ALP 9212-N	120.00	0.660	3.052
STD AMPS PLATFORM	120.00	3.000	2.139
ALP 9212-N	110.00	0.660	3.773
STD AMPS PLATFORM	110.00	3.000	2.086
ALP 9212-N	100.00	0.660	3.671
STD AMPS PLATFORM	100.00	3.000	2.030
ALP 9212-N	90.00	0.660	3.562
STD AMPS PLATFORM	90.00	3.000	1.970

TUBE PROPERTIES			MEMBER FORCES			STRESSES			STRESS	TOTAL	
ELEV FT	DIAM IN	WALL IN	SHEAR K	BENDING K-FT	AXIAL K	AXIAL KSI	BEND. KSI	ALLOW KSI	RATIOS	DEFL IN	TILT DEG
140.00	18.00	0.1875	0.55	3.87	0.05	0.00	1.00	58.65	0.02	101.4	6.18
138.00	18.50	0.1875	1.07	4.91	0.34	0.03	1.21	58.38	0.02	98.8	6.18
130.00	20.52	0.1875	7.28	13.45	3.75	0.31	2.68	57.43	0.04	88.6	6.14
120.00	23.04	0.1875	7.28	85.82	3.75	0.28	13.50	56.48	0.23	76.0	5.96
117.00	23.79	0.1875	13.22	125.28	7.12	0.51	18.47	59.69	0.32	72.4	5.86
TYPE OF JOINT: SLIP JOINT											
117.00	23.29	0.3125	13.59	125.30	7.74	0.34	11.76	61.50	0.19	72.4	5.86
110.00	25.05	0.3125	20.34	219.94	11.56	0.48	17.79	60.60	0.28	64.0	5.66
100.00	27.57	0.3125	27.01	422.43	15.73	0.59	28.11	59.52	0.44	52.6	5.26
90.00	30.09	0.3125	27.01	691.47	15.73	0.54	38.53	58.62	0.61	42.2	4.72
82.00	32.10	0.3125	33.38	957.65	20.04	0.64	46.78	63.02	0.75	34.7	4.21
TYPE OF JOINT: SLIP JOINT											
82.00	31.35	0.4375	34.15	957.64	22.60	0.53	35.48	62.01	0.55	34.7	4.21
67.00	35.13	0.4375	35.00	1468.78	25.18	0.53	43.15	60.58	0.67	22.7	3.40
55.00	38.15	0.4375	35.73	1888.18	27.68	0.53	46.89	59.64	0.73	15.0	2.72
43.00	41.17	0.4375	35.73	2316.60	27.68	0.49	49.27	64.63	0.77	9.0	2.05
TYPE OF JOINT: SLIP JOINT											
43.00	40.17	0.5000	36.52	2316.61	32.94	0.53	45.54	60.57	0.70	9.0	2.05
30.00	43.45	0.5000	37.14	2791.09	35.57	0.53	46.77	59.68	0.72	4.3	1.39
20.00	45.96	0.5000	37.14	3162.36	35.57	0.50	47.26	59.08	0.74	1.9	0.91
10.00	48.48	0.5000	37.69	3539.20	38.02	0.50	47.46	58.55	0.75	0.5	0.44
0.00	51.00	0.5000	38.70	3921.77	41.93	0.53	47.45	63.15	0.76	0.0	0.00

REACTION COMPONENTS (KIPS AND FT-KIPS)					
TRANSVERSE	VERTICAL	WIND	MOMENT ABOUT	MOMENT ABOUT	MOMENT ABOUT
SHEAR	FORCE	SHEAR	TRANSVERSE	VERTICAL	WIND AXIS
0.000	41.932	-38.701	3921.773	0.000	0.000

BASE PLATE AT ELEVATION 0.00 FEET

TUBE DIAMETER 51.00 INCHES
 DESIGN MOMENT 3921.8 KIP FT
 DESIGN MOMENT IS 0. DEGREES FROM THE WIND DIRECTION
 BOLTS ARE ON THE KNUCKLES OF THE TUBE

APPLIED AXIAL FORCE 41.9 KIPS
 APPLIED SHEAR 38.70 KIPS

BOLT DATA

BOLT TYPE A615 GR75
 BOLTS ARE EVENLY SPACED
 DIAMETER 2.250 INCHES
 EFFECTIVE AREA 3.250 SQ IN
 TOTAL LENGTH (DET) 6.0 FEET
 MINIMUM EMBEDMENT 8.2 FEET
 NUMBER OF BOLTS 20
 BOLT CIRCLE DIAMETER 60.00 INCHES
 ALLOWABLE STRESS 60.0 KSI
 APPLIED AXIAL STRESS 48.9 KSI
 MAX BOLT FORCE 159.0 KIPS
 BOLT BENDING STRESS 2.8 KSI
 COMBINED BOLT STRESS 51.7 KSI
 CLEARANCE UNDER PLATE 3.25 INCHES
 BOLT WEIGHT 1692.0 POUNDS

PLATE DATA

DIAMETER OF PLATE 66.00 INCHES
 MATERIAL A871 GR60
 PROVIDED THICKNESS 2.250 INCHES
 REQUIRED THICKNESS 2.019 INCHES
 BOLT HOLE DIAMETER 2.625 INCHES
 CENTER HOLE SIZE 41.00 INCHES
 NET WEIGHT 1268.9 POUNDS
 RAW STOCK WEIGHT 2773.7 POUNDS
 SURFACE AREA 27.68 SQ FT
 ALLOWABLE STRESS 59.99 KSI
 MAX APPLIED STRESS 48.29 KSI

CONCRETE STRENGTH 3000. PSI

Base Plate - use 66.00 inch ROUND x 2.250 inch A871 GR60
 with (20) 2.250 diameter x 6.00 foot caged A615 GR75 double end
 threaded bolts w/(4) hex nuts each on a 60.00 inch bolt circle



STATE OF CONNECTICUT
CONNECTICUT SITING COUNCIL

Ten Franklin Square
New Britain, Connecticut 06051
Phone: (860) 827-2935
Fax: (860) 827-2950

September 20, 1999

Honorable Kathleen C. Corkum
First Selectman
Town of Canton
4 Market Street, P.O. Box 168
Collinsville, CT 06022

RE: EM-BAM/SCLP-023-990917 - Cellco Partnership d/b/a Bell Atlantic Mobile and Springwiche Cellular Limited Partnership notice of intent to modify an existing telecommunications facility located at 14 Canton Springs Road in Canton, Connecticut.

Dear Ms. Corkum:

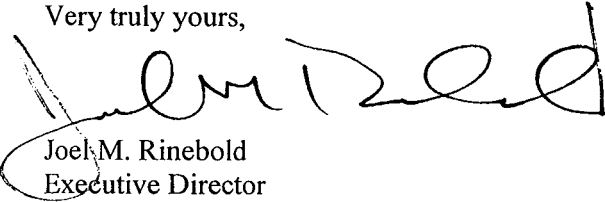
The Connecticut Siting Council (Council) received this request to modify an existing telecommunications facility, pursuant to Regulations of Connecticut State Agencies Section 16-50j-72.

The Council will consider this item at the next meeting scheduled for Friday, October 8, 1999, at 10:00 a.m. in Hearing Room One, Ten Franklin Square, New Britain, Connecticut.

Please call me or inform the Council if you have any questions or comments regarding this proposal.

Thank you for your cooperation and consideration.

Very truly yours,



Joel M. Rinebold
Executive Director

JMR/jlh

Enclosure: Notice of Intent

SPRINGWICH CELLULAR LIMITED PARTNERSHIP
500 Enterprise Drive, 3rd Floor
Rocky Hill, CT. 06067
860/513-7700

BELL ATLANTIC MOBILE
20 Alexander Drive
Wallingford, CT. 06492
203/294-8519

September 17, 1999

HAND DELIVERED

Mr. Mortimer A. Gelston, Chairman
Connecticut Siting Council
10 Franklin Square
New Britain, Connecticut 06051

RECEIVED

SEP 17 1999

**CONNECTICUT
SITING COUNCIL**

Re: Bell Atlantic Mobile and Springwich Cellular Limited Partnership – Canton Cell Site

Dear Mr. Gelston:

Cellco Partnership d/b/a Bell Atlantic Mobile ("BAM") and Springwich Cellular Limited Partnership ("SCLP") (collectively, the "Applicants") plan to install cellular antennas and related equipment at the tower facility in Canton owned by the Canton Volunteer Fire Company, Inc. Please accept this letter as notice of intent, pursuant to R.C.S.A. Section 16-50j-73, of the placement of associated equipment on an existing non-facility tower pursuant to R.C.S.A. Section 16-60j-72(c). In further compliance with R.C.S.A. Section 16-50j-73, a copy of this letter is being sent to the First Selectman of Canton.

The existing non-facility tower is a 140' steel monopole tower located at 14 Canton Springs Road, Canton, Connecticut. The Volunteer Fire Company plans to install one 20' whip antenna at the top of the tower which has been approved by the Canton Zoning Board and provides emergency service communications for the Volunteer Fire Department. As shown on the attached drawings and as further described below, BAM and SCLP each propose to install antennas on the existing tower and to locate their equipment in the multi-tenant equipment shelter approved by the Zoning Board. The Town's radio equipment and an emergency use diesel fuel generator will also be located in this shared equipment shelter. The generator will be installed following receipt of the required DEP permit.

The addition of the Applicant's antennas and equipment to the tower site does not constitute a substantial environmental affect since such additions do not cause a significant change or alteration in the physical and environmental characteristics of the site (see attached site plan). Rather, the planned changes to the existing non-facility tower falls squarely within those activities explicitly provided for in R.C.S.A. Section 16-50j-72(c).

First, the height of the existing tower will be unaffected. BAM plans to install eight antennas, Swedcom Model ALP 110-11 to be mounted, four per sector on a triangular platform to be attached to the tower. The center of radiation will be 130' AGL. SCLP plans to install twelve antennas, Swedcom Model ALP 110-11 to be mounted, four per sector on a triangular platform to be attached to the tower. The center of radiation will be 120' AGL. A G.P.S. antenna will be mounted from the tower. The tower will not require any structural modification to support the proposed attachments.

Second, the proposed addition will not extend the site boundaries. The town has approved a multi-tenant equipment shelter located at the base of the tower which will contain the radio equipment of all carriers to be co-located on the monopole (see attached site plan).

Third, the proposed addition will not increase the noise levels at the existing compound facility by six decibels or more.

Fourth, the operation of the antennas will not increase the total frequency electromagnetic radiation power density, measured at the tower base, to a level at or above the applicable ANSI standards. "Worst-case" exposure calculations for a point at the base of the tower in relation to operation of each of BAM's, SCLP's and the Town's antenna arrays are as follows:

	<u>Applicable ANSI Std.</u>	<u>Calculated "Worst-Case"</u>	<u>Percentage Of Std.</u>
BAM	0.583 mW/cm ²	0.0474 mW/cm ²	8.14%
SCLP	0.5867 mW/cm ²	0.0404 mW/cm ²	6.89%
FIRE DEPT	0.0013 mW/cm ²	0.2 mW/cm ²	0.64%

The collective "worst-case" exposure would be only 15.67% of the ANSI standards, as calculated for mixed frequency sites. Power density levels from shared use of the tower facility would thus be well below applicable ANSI standards.

Finally, the owner of the tower, Canton Volunteer Fire Company, Inc., has received the necessary municipal approvals and permits for the project for a multi-tenant monopole communications facility (see attached building/zoning permits). The Town's zoning approval included the proposed future attachment of the Applicant's antennas to the monopole and placement of related equipment in the multi-tenant equipment shelter. No further zoning approval is required. The Applicant will apply for any pertinent electrical permits.

For the foregoing reasons, the Applicant seeks a ruling that its proposed additions to the non-facility tower would not cause a significant change or alteration in the physical and environmental characteristics of the site pursuant to R.C.S.A. Section 16-50j-72(c)(1). The Applicant further submits that the changes comply with R.C.S.A. Section 16-50j-72(c), (2) through (5) and therefore request a determination that the placement of the antennas and equipment on the existing non-facility tower site does not constitute a substantial environmental effect under R.C.S.A. Section 16-50j-72(c).

Thank you for your consideration of this matter.

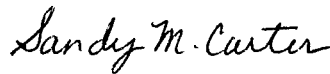
Mr. Mortimer A. Gelston
September 17, 1999
Page 3

Pursuant to Connecticut General Statutes Section 16-50v-1(a) of the Regulations of Connecticut State Agencies, the Applicant has enclosed a check in the amount of \$500.00 for the required filing fee.

Very truly yours,



Peter W. van Wilgen
Director-Real Estate Operations
Springwich Cellular Limited Partnership



Sandy M. Carter
Manager-Regulatory
Bell Atlantic Mobile

Attachments

cc: Honorable Kathleen C. Corkum, First Selectman

SPRINGWICH CELLULAR LIMITED PARTNERSHIP
500 Enterprise Drive, 3rd Floor
Rocky Hill, CT. 06067
860/513-7700

BELL ATLANTIC MOBILE
20 Alexander Drive
Wallingford, CT. 06492
203/294-8519

September 17, 1999


Honorable Kathleen C. Corkum
First Selectman
Town of Canton
Town Hall
4 Market Street
Canton, Connecticut 06022

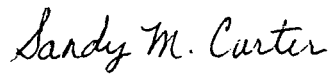
Dear Mrs. Corkum:

This letter is to inform you that Cellco Partnership d/b/a Bell Atlantic Mobile ("BAM") and Springwich Cellular Limited Partnership ("SCLP") plan to install antennas and associated equipment at the existing tower facility located at 14 Canton Springs Road, Canton, Connecticut. As required by Section 16-50j-73 of the Regulations of the Connecticut State Agencies (R.C.S.A.), please accept this letter and the attached letter to the Connecticut Siting Council as notice on intent of the placement of the associated equipment on an existing non-facility tower pursuant to R.C.S.A. Section 16-50j-72 (c).

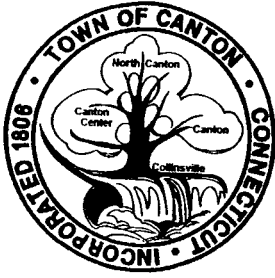
The attached letter fully sets forth the Company's proposal. However, if you have any questions or require any further information on the plans for this site or the Siting Council's procedures, please contact the undersigned at (203) 294-8519 or Mr. Joel Rinebold, Executive Director of the Connecticut Siting Council, at (860) 827-2935.

Sincerely,


Peter W. van Wilgen
Director-Real Estate Operations
Springwich Cellular Limited Partnership


Sandy M. Carter
Manager - Regulatory
Bell Atlantic Mobile

Enclosure



ZONING COMMISSION

Canton, Connecticut INC. 1806

4 Market Street, Collinsville, Connecticut 06022

February 26, 1999

Mr. Kenneth C. Baldwin
Robinson & Cole, LLP
One Commercial Plaza
280 Trumbull Street
Hartford, CT 06103-3597

1. RE: Special Exception and Site Plan Modification for Communications Tower and Facility, File #218, Apln 795; 14 Canton Springs Road; Canton Volunteer Fire Company, Inc., owner/applicant.

Dear Mr. Baldwin::

At a regular meeting held on Wednesday, February 17, 1999 at the Town Hall in Collinsville, the Canton Zoning Commission voted to approve the above-captioned request for a special exception and site plan modification in accordance with Canton Zoning Regulations §67.4.

This action of the Commission shall be effective 14 days after publication of the decision in the Hartford Courant on March 2, 1999.

RECORDING YOUR APPROVAL:

Enclosed you will find the Certificate of Action. In order to validate the certificate and make the action of the Commission effective, you must bring the original Certificate of Action to the Canton Town Clerk to be recorded on the Canton Land Records. Recording fees may be obtained by calling the Town Clerk's office at 693-7870.

Sincerely,

Eric M. Barz

Eric M. Barz, A.I.C.P.
Director of Planning and Community Development

Telephone (860) 693-7856

Fax (860) 693-7840

CERTIFICATE OF ACTION

CANTON ZONING COMMISSION

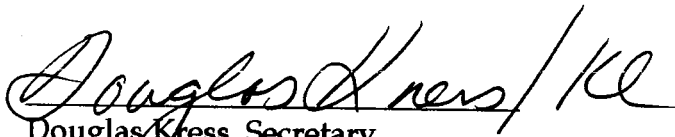
OWNER OF RECORD:	[ZONING FILE 218
<i>Canton Volunteer Fire Company, Inc.</i>	[APPLICATION 795
<i>14 Canton Springs Road</i>	[District B1
<i>Canton, CT 06019</i>	[Map 4-3 Lot 97
APPLICANT: Mr. Ralph Trumbull	[Location 14 Canton Springs Road

**APPROVAL OF SPECIAL EXCEPTION AND
SITE PLAN MODIFICATION**

As Secretary of the Canton Zoning Commission, I certify that at a regular meeting on February 17, 1999 the Zoning Commission approved your request for a special exception and site plan modification.

As approved, the Zoning Commission finds this application to be in conformance with Section 67.4 of the Canton Zoning Regulations.

Dated at Canton, Connecticut on February 26, 1999.


Douglas Kress, Secretary
CANTON ZONING COMMISSION

RECEIVED FOR RECORD AT CANTON, CT.

ON 03-01-99 AT 12:36 PM

ATTEST: SHIRLEY C. KROMPEGAL, TOWN CLERK

TOWN OF CANTON --- BUILDING DEPARTMENT
4 Market Street Collinsville, Ct. 06022
Phone (860)693-7854 Fax (860)693-7840
BUILDING PERMIT APPLICATION

2-sets plans
#12/01

PERMIT # 99-134

PROPERTY INFORMATION

LOCATION: 14 Canton Springs Road
No. Street
ZONE: _____ MAP: _____ LOT: _____ LOT SIZE: _____ Sq.Ft.
OWNER: Canton Volunteer Fire Company, Inc. PHONE # _____

OWNER'S ADDRESS: 14 Canton Springs Road, Canton, CT 8/2/99
(If Different From Above) No. Street Town State Zip

CONTRACTOR INFORMATION

NAME: McPhee Electric Ltd. LLC MARK GAUGER
COMPANY NAME: McPhee Electric Ltd. DAVID LICENSE # MCO.0090023
ADDRESS: 505 Main Street Farmington CT 06032
No. Street Town State Zip PHONE # 860-677-9797

CONSTRUCTION INFORMATION

Type Of Work Proposed: New Alteration Addition Repair Other _____ Estimated Cost \$ 193,340.00
(Specify)
TYPE OF BUILDING: One Or Two Family Dwelling Multiple Family Dwelling Business Office Retail Outlet
Industrial Restaurant Automotive Repair Garage Barn Shcd Dock Place of Assembly Other Comm. Tower
(Specify)
Structure Is To Be _____ Ft. Wide By _____ Ft. Long By _____ Ft. In Height (Must Conform With Zoning Limits)
Number of Floors _____ Total Square Footage _____ Room Count _____ No. Bedrooms _____ No. Bathrooms _____
Whirlpool Type Of Heat _____ Air Conditioning # Of Chimneys _____ # Of Fireplaces _____

AFFIDAVIT AND AGREEMENT

I hereby certify that I am the owner of the property which is the subject of this application OR the authorized agent of the property owner; I agree to call at least 24 hours in advance for the required inspections; I agree to uncover and expose any work which is covered or concealed without inspector's approval; I understand that when a permit is issued it grants no right to violate any code, ordinance, or statute, regardless of what may be shown or omitted on the approved plans and specifications and regardless of any agreement with any official.

I HAVE READ AND AGREE TO ALL OF THE ABOVE

SIGNATURE OF APPLICANT: [Signature] DATE: 7/26/99

DO NOT WRITE BELOW LINE --- OFFICE USE ONLY

CONSTRUCTION TYPE: Communication Tower USE GROUP: 4 ASSIGNED VALUE: \$240,920 TOTAL FEE: \$2,892

APPLICATION APPROVED DISAPPROVED REASON FOR DISAPPROVAL: _____

DATE: 7-28-99

[Signature]
Building Official

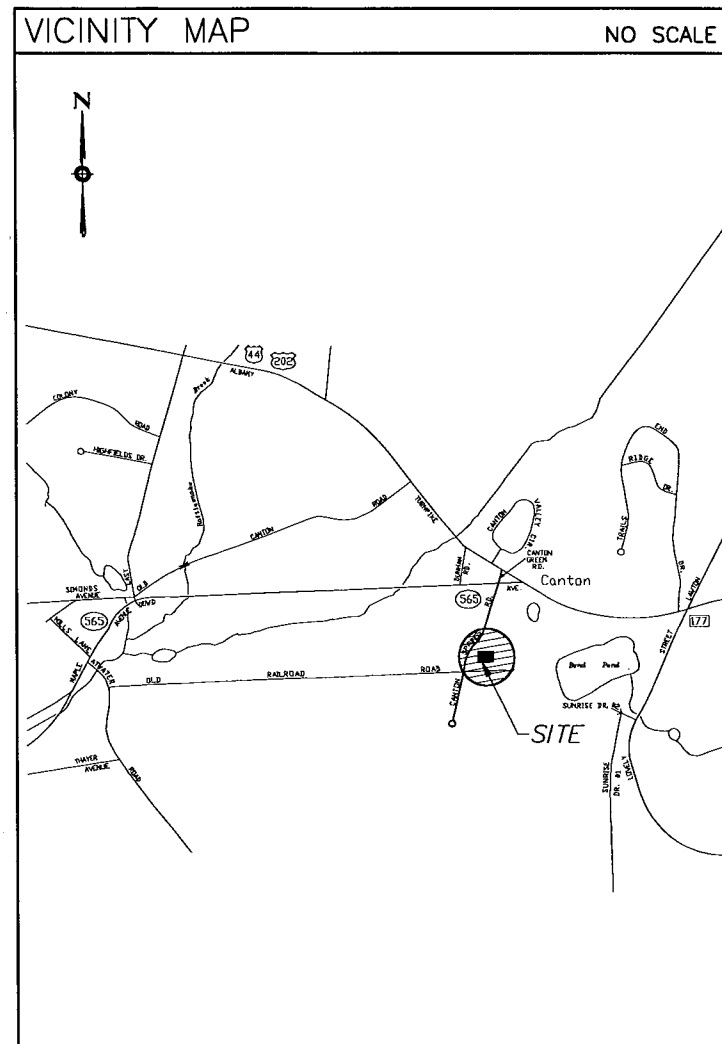
REMARKS:

SPRINGWICH CELLULAR LIMITED PARTNERSHIP



WIRELESS COMMUNICATIONS FACILITY

14 CANTON SPRINGS ROAD
CANTON, CONNECTICUT



PROJECT SUMMARY	
SITE NAME:	CANTON FIRE DEPARTMENT
SITE ADDRESS:	14 CANTON SPRINGS ROAD CANTON, CT.
CURRENT ZONING:	B-1
GOVERNING CODE:	CONNECTICUT STATE BUILDING CODE CONNECTICUT STATE FIRE SAFETY CODE
JURISDICTION:	TOWN OF CANTON
PROPERTY OWNER:	CANTON VOLUNTEER FIRE COMPANY, INC.
APPLICANT:	SPRINGWICH CELLULAR LIMITED PARTNERSHIP 500 ENTERPRISE DRIVE ROCKY HILL, CT. 06067 BELL ATLANTIC MOBILE 20 ALEXANDER DRIVE WALLINGFORD, CT. 06492
ARCHITECT:	URS GREINER WOODWARD-CLYDE, INC. A.E.S. 500 ENTERPRISE DRIVE ROCKY HILL, CT 06067
M/E/P ENGINEER:	URS GREINER WOODWARD-CLYDE, INC. A.E.S. 500 ENTERPRISE DRIVE ROCKY HILL, CT 06067
SURVEYOR:	URS GREINER WOODWARD-CLYDE, INC. A.E.S. 500 ENTERPRISE DRIVE ROCKY HILL, CT 06067

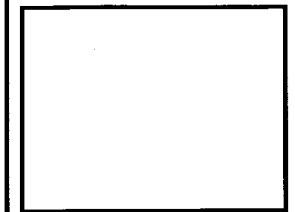
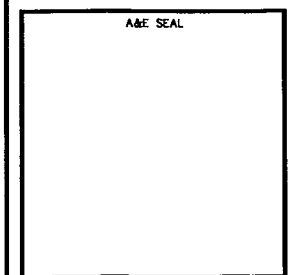
LEGEND	
SYMBOL	DESCRIPTION
	SECTION OR DETAIL NUMBER
	SHEET WHERE DETAIL/SECTION OCCURS
	ELEVATION NUMBER
	SHEET WHERE ELEVATION OCCURS

ABBREVIATIONS	
EXIST.	EXISTING
FF	FINISHED FLOOR
VIF	VERIFY IN FIELD
PTD	PAINTED

SHEET INDEX	
SHT. NO.	DESCRIPTION
T-1	TITLE SHEET
SC-1	PARTIAL SITE PLAN AND TOWER/BUILDING ELEVATION-SOUTH



A&E FIRM
URS Greiner Woodward Clyde
A-E-S
500 ENTERPRISE DRIVE
ROCKY HILL, CONNECTICUT
1-(860)-529-8882



PROJECT NO: F301727.13/F03

DRAWN BY: CRS

CHECKED BY:

ISSUED FOR	
DATE	BY
09-16-99	SITING COUNCIL

THE INFORMATION CONTAINED
IN THIS SET OF DOCUMENTS
IS PROPRIETARY BY NATURE.
ANY USE OR DISCLOSURE
OTHER THAN THAT WHICH
RELATES TO SNET AND BAM
IS STRICTLY PROHIBITED.

**CANTON FIRE
DEPARTMENT**
14 CANTON SPRINGS ROAD
CANTON, CT

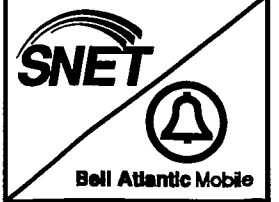
SCALE: AS NOTED

DATE: 09-16-99

DRAWING 1 OF 2

TITLE
SHEET

T-1



A&E FIRM
CRS Griner Woodward Clyde
 A-E-S
 500 ENTERPRISE DRIVE
 ROCKY HILL, CONNECTICUT
 1-(800)-529-8882

A&E SEAL

PROJECT NO: F301727.13/F03

DRAWN BY: CRS

CHECKED BY:

ISSUED FOR	
09-16-99	STING COUNCIL

THE INFORMATION CONTAINED IN THIS SET OF DOCUMENTS IS PROPRIETARY BY NATURE. ANY USE OR DISCLOSURE OTHER THAN THAT WHICH RELATES TO SNET AND BAM IS STRICTLY PROHIBITED.

CANTON FIRE DEPARTMENT
 14 CANTON SPRINGS ROAD
 CANTON, CT

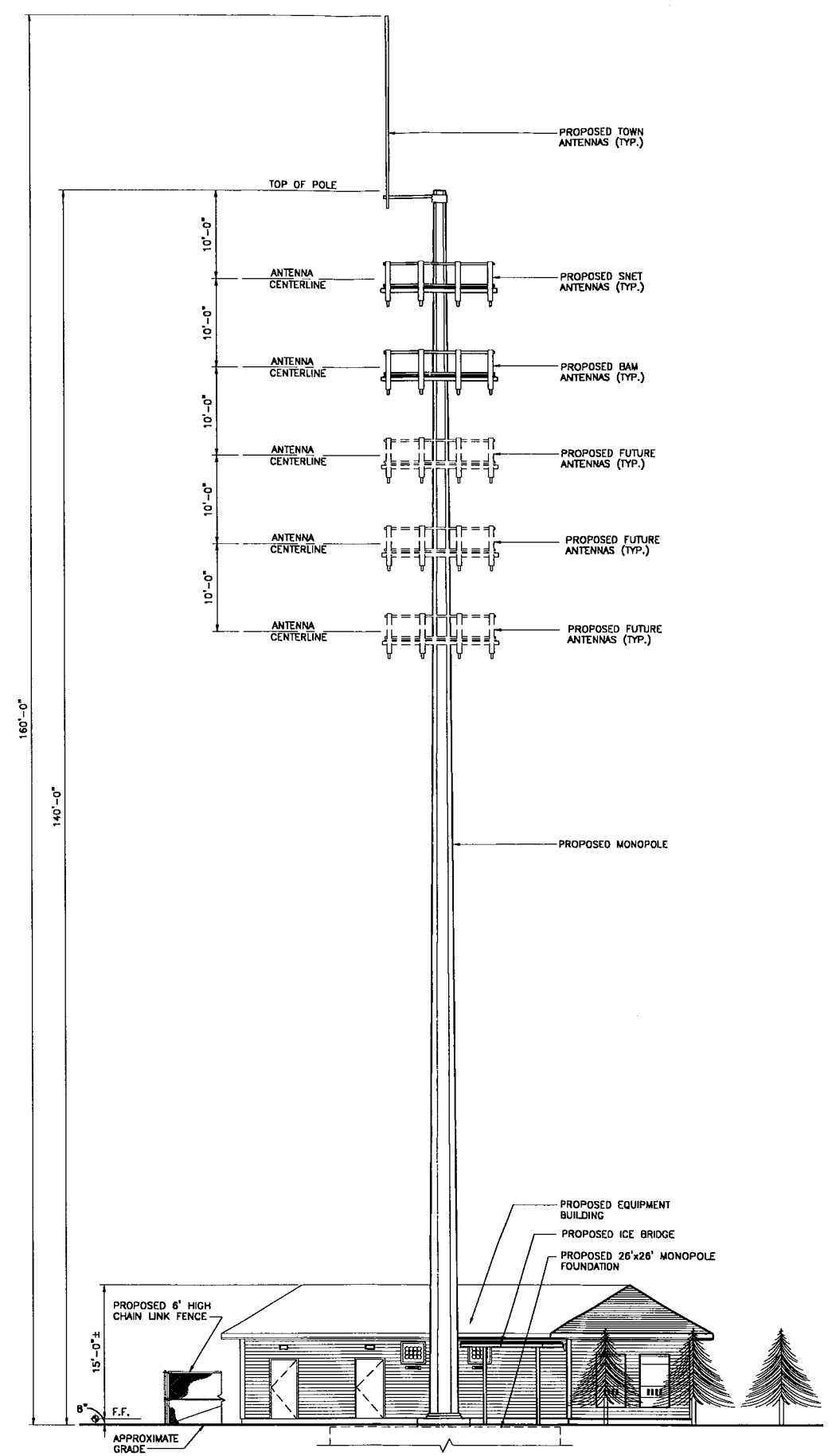
SCALE: AS NOTED

DATE: 09-16-99

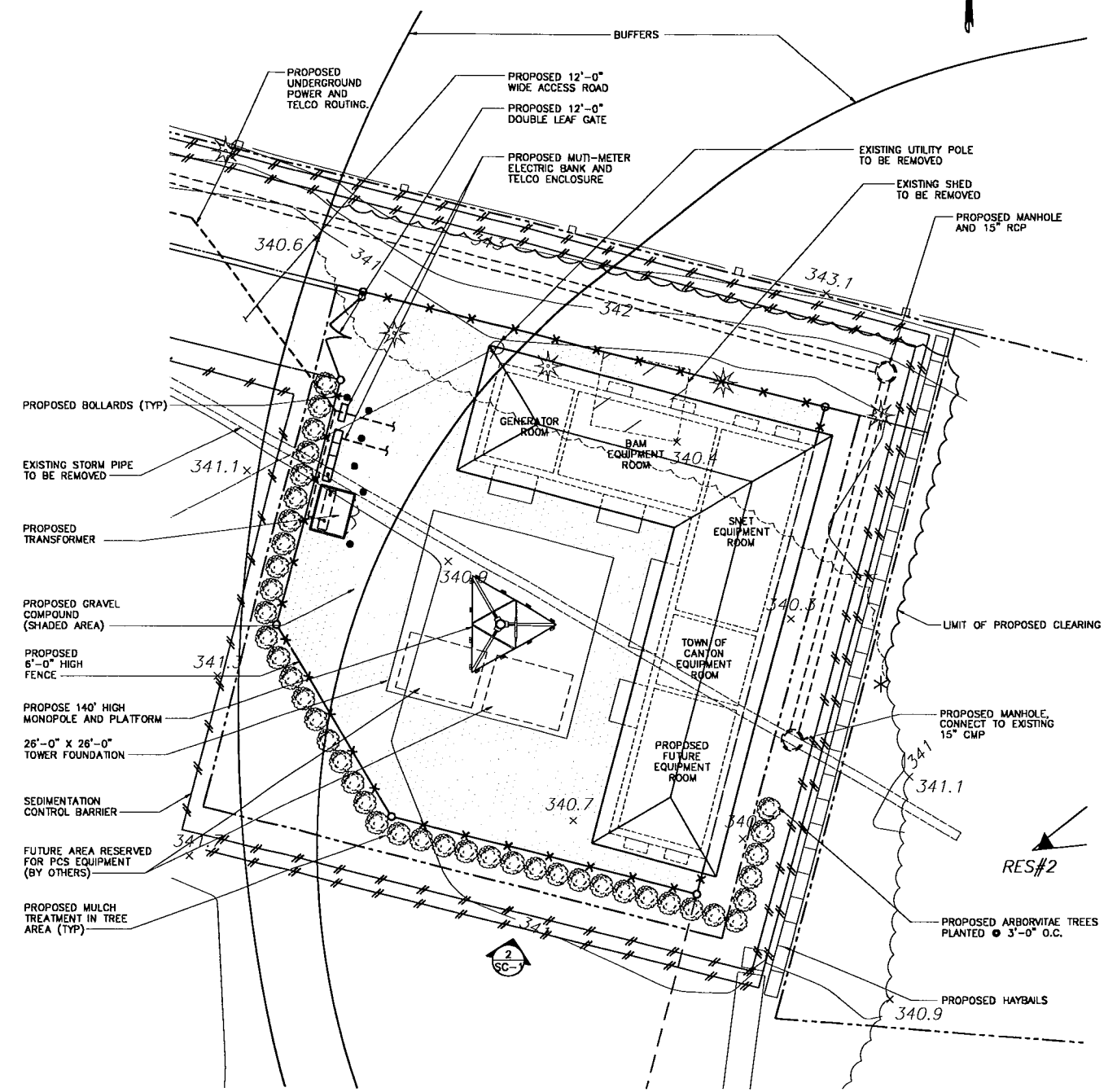
DRAWING 2 OF 2

PARTIAL SITE PLAN AND TOWER/BUILDING ELEVATION-SOUTH

SC-1



2 TOWER/BUILDING ELEVATION-SOUTH
 SCALE: 1/8" = 1'-0"



1 COMPOUND PLAN
 SCALE: 1" = 10'-0"