

What Powers You

March 29, 2024

Melanie Bachman, Esq.
Executive Director
Connecticut Siting Council
10 Franklin Square
New Britain, CT 06051

RE: Bloom Energy Corporation, **Notice of Exempt Modification Pursuant to RCSA 16-50j-57(a)** to Existing Fuel Cell Energy Facility Site at The Home Depot, 656 Reservoir Avenue, Bridgeport 06606 (“Notice of Exempt Modification”)

Dear Ms. Bachman:

This letter is to hereby notify the Connecticut Siting Council of Bloom Energy Corp.’s intent to undertake an exempt modification, in accordance with Section 16-50f-57(a) of the Regulations of Connecticut State Agencies (“RCSA”), for the necessary upgrade to Bloom’s fuel cell energy server system at **The Home Depot, located at 656 Reservoir Avenue, Bridgeport 06606**

Proposed Modification

The existing facility consists of one (1) 200kw Bloom Energy ES-5700 Energy Server, now reaching the end of its service life. Specifications for the existing equipment and new equipment to be installed are provided in Attachment 1. As-builts showing the existing facility layout is shown in Attachment 2. There will be no changes to the site footprints, layouts, or utility routing as Bloom plans to replace all components in kind.

Bloom Energy proposes the following modifications to the facility:

1. Disconnect existing servers from the natural gas source, water source, supervisory control and data acquisition, and electricity systems.
2. Remove the existing fuel cell servers.
3. Install one (1) current generation fuel cell server (Model No. ES5-1650US0301S-NASY4N-0) on existing concrete pad or skid at the site (direct replacement in kind).
4. Install new server repower components.

The proposed modification would not have a substantial adverse environmental effect or cause a significant adverse change or alteration in the physical or environmental characteristics of the facility because:



Bloom Energy Corporation
4353 North First Street, San Jose, CA 95134
408 543 1500
www.bloomenergy.com

What Powers You

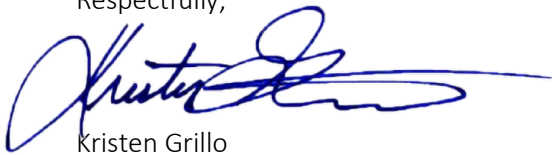
- a. The modification does not extend the boundaries of the site beyond the existing compound and will not impair the structural integrity of the facility.
- b. The modification does not increase the height of the existing associated equipment.
- c. The modification will not increase noise levels at the site boundary or to levels that exceed state and local criteria.
- d. Electric and magnetic field levels at the site will not be affected by the modifications due to low or no change in export of power from site.
- e. No endangered, threatened, or sensitive species are within the vicinity of the facility per NDDDB.
- f. The modifications would not affect any waterways or wetlands and the facility is not located in a flood zone.

Construction start is expected to begin on August 12th, 2024 and will be completed within 4-6 weeks.

Bloom will provide the Council with an original and two copies of this notice, including the required \$625 filing fee. A copy of this notice will also be provided to the City of Bridgeport Mayor and the property owners representative, Colin Holloway via electronic mail.

Please let us know if you have any questions or require additional information regarding this notification. Thank you.

Respectfully,



Kristen Grillo

Senior Permitting Specialist | East Coast Field Office

Customer Installations Group | North America

(917) 803-4511

Kristen.Grillo@bloomenergy.com

CC: Joseph P. Ganin, City of Bridgeport Mayor
Colin Holloway, The Home Depot



Bloom Energy Corporation
4353 North First Street, San Jose, CA 95134
408 543 1500
www.bloomenergy.com

Attachment 1: Bloom Energy Model Datasheets



ES-5700

Clean, Reliable, Affordable Energy



CLEAN, RELIABLE POWER ON DEMAND

Bloom Energy's ES-5700 delivers clean power that reduces emissions and energy costs. The modular architecture enables the installation to be tailored to the actual electricity demand, with a flexibility to add servers as the load increases. The ES-5700 actively communicates with Bloom Energy's network operations centers so system performance can be monitored and maintained 24 hours per day, 365 days per year.

INNOVATIVE TECHNOLOGY

Utilizing patented solid oxide fuel cell (SOFC) technology, the ES-5700 produces combustion-free power at unprecedented efficiencies, meaning it consumes less fuel and produces less CO₂ than competing technologies. Additionally, no water is needed under normal operating conditions.

ALL-ELECTRIC POWER

The ES-5700, which operates at a very high electrical efficiency, eliminates the need for complicated and costly CHP systems. Combining the standard electrical and fuel connections along with compact footprint and sleek design, the ES-5700 is the most deployable fuel cell on the market.

CONTROLLED AND PREDICTABLE COST

By providing efficient on-site power generation, the economic and environmental benefits are central to the ES-5700 value proposition. Bloom Energy customers can lock in their long term energy costs and mitigate the risk of electricity rate increases. The ES-5700 has been designed in compliance with a variety of safety standards and is backed by a comprehensive warranty.

About Bloom Energy

Bloom Energy is making clean, reliable energy affordable. Our unique on-site power generation systems utilize an innovative fuel cell technology with roots in NASA's Mars program. By leveraging breakthrough advances in materials science, Bloom Energy systems are among the most efficient energy generators, providing for significantly reduced operating costs and dramatically lower greenhouse gas emissions. Bloom Energy Servers are currently producing power for many Fortune 500 companies including Apple, Google, Walmart, AT&T, eBay, Staples, as well as notable non-profit organizations such as Caltech and Kaiser Permanente.

Headquarters:

Sunnyvale, California

For More Information:

www.bloomenergy.com

ES-5700

Technical Highlights

Outputs

Nameplate power output (net AC)	210 kW
Base load output (net AC)	200 kW
Electrical connection	480 V, 3-phase, 60 Hz

Inputs

Fuels	Natural gas, directed biogas
Input fuel pressure	15 psig
Water	None during normal operation

Efficiency

Cumulative electrical efficiency (LHV net AC)	52-60%
Heat rate (HHV)	6,295-7,264 Btu/kWh

Emissions

NO _x	< 0.01 lbs/MWh
SO _x	Negligible
CO	< 0.10 lbs/MWh
VOCs	< 0.02 lbs/MWh
CO ₂ @ stated efficiency	735-849 lbs/MWh on natural gas; carbon neutral on directed biogas

Physical Attributes and Environment

Weight	19.4 tons
Dimensions	26' 5" x 8' 7" x 6' 9"
Temperature range	-20° to 45° C
Humidity	0% - 100%
Seismic vibration	IBC site class D
Location	Outdoor
Noise	< 70 dBA @ 6 feet

Codes and Standards

Complies with Rule 21 interconnection and IEEE1547 standards
Exempt from CA Air District permitting; meets stringent CARB 2007 emissions standards
Product listed by Underwriters Laboratories Inc. (UL) to ANSI/CSA America FC 1-2004

Additional Notes

Access to a secure website to monitor system performance & environmental benefits
Remotely managed and monitored by Bloom Energy
Capable of emergency stop based on input from the site



Bloom Energy Corporation
1299 Orleans Drive
Sunnyvale CA 94089
T 408 543 1500
www.bloomenergy.com

Energy Server 5.5

Always On, Clean Energy
Using Patented Solid Oxide
Fuel Cell Technology



The Energy Server 5 provides combustion-free electric power with these benefits



Clean

Our systems produce near zero criteria pollutants (NOx, SOx, and particulate matter) and far fewer carbon emissions than legacy technologies.



Reliable

Bloom Energy Servers are designed around a modular architecture of simple repeating elements. This enables us to generate power 24 x 7 x 365 and can be configured to eliminate the need for traditional backup power equipment.



Resilient

Our system operates at very high availability due to its fault-tolerant design and use of the robust natural gas pipeline system. Bloom Energy Servers have survived extreme weather events and other incidences and have continued providing power to our customers.



Simple Installation and Maintenance

Our Energy Servers are 'plug and play' and have been designed in compliance with a variety of safety standards. Bloom Energy manages all aspects of installation, operation and maintenance of the systems.

Energy Server 5.5

Technical Highlights (E55-1650US0301S-NASY14-0)

Outputs

Nameplate power output (net AC)	165kW
Load output (net AC)	165kW
Electrical connection	480V, 3-phase, 60Hz

Inputs

Fuels	Natural gas
Input fuel pressure	12-18 psig (15 psig nominal)12-18 psig (15 psig nominal)Natural gas
Water	None during normal operation

Efficiency

Cumulative electrical efficiency (LHV net AC) ¹	65-53%
Heat rate (HHV)	5,811-7,127 Btu/kWh

Emissions²

NOx	0.0017 lbs/MWh
SOx	Negligible
CO	0.034 lbs/MWh
VOCs	0.0159 lbs/MWh
CO ₂ @ stated efficiency	679-833 lbs/MWh on natural gas; carbon neutral on directed biogas

Physical Attributes and Environment

Weight	9.9 tons
Dimensions (variable layouts)	10'9" x 8'8" x 7'0" or 21'6" x 4'4" x 6'9"
Temperature range	-20° to 45° C
Humidity	0%-100%
Seismic vibration	IBC site class D
Location	Outdoor
Noise	<70 dBA @ 6 feet

Codes and Standards

Complies with Rule 21 interconnection and IEEE1547 standards

Exempt from CA Air District permitting; meets stringent CARB 2007 emissions standards

An Energy Server is a Stationary Fuel Cell Power System. It is Listed by Underwriters Laboratories, Inc. (UL) as a 'Stationary Fuel Cell Power System' to ANSI/CSA FC1-2014 under UL Category IRGZ and UL File Number MH45102.

Additional Notes

Access to a secure website to monitor system performance & environmental benefits

Remotely managed and monitored by Bloom Energy

Capable of emergency stop based on input from the site

¹ 65% LHV efficiency verified by ASME PTC 50 Fuel Cell Power Systems Performance Test

² NOx and CO measured per CARB Method 100, VOCs measured as hexane by SCAQMD Method 25.3

About Bloom Energy

Bloom Energy's mission is to make reliable, clean energy affordable for everyone in the world. The company's product, the Bloom Energy Server, delivers highly reliable and resilient, Always On electric power that is clean and sustainable. Bloom's customers include twenty-five of the Fortune 100 companies and leaders in cloud services and data centers, healthcare, retail, financial services, utilities and many other industries.

Bloom Energy

4353 North First Street
San Jose, CA 95134

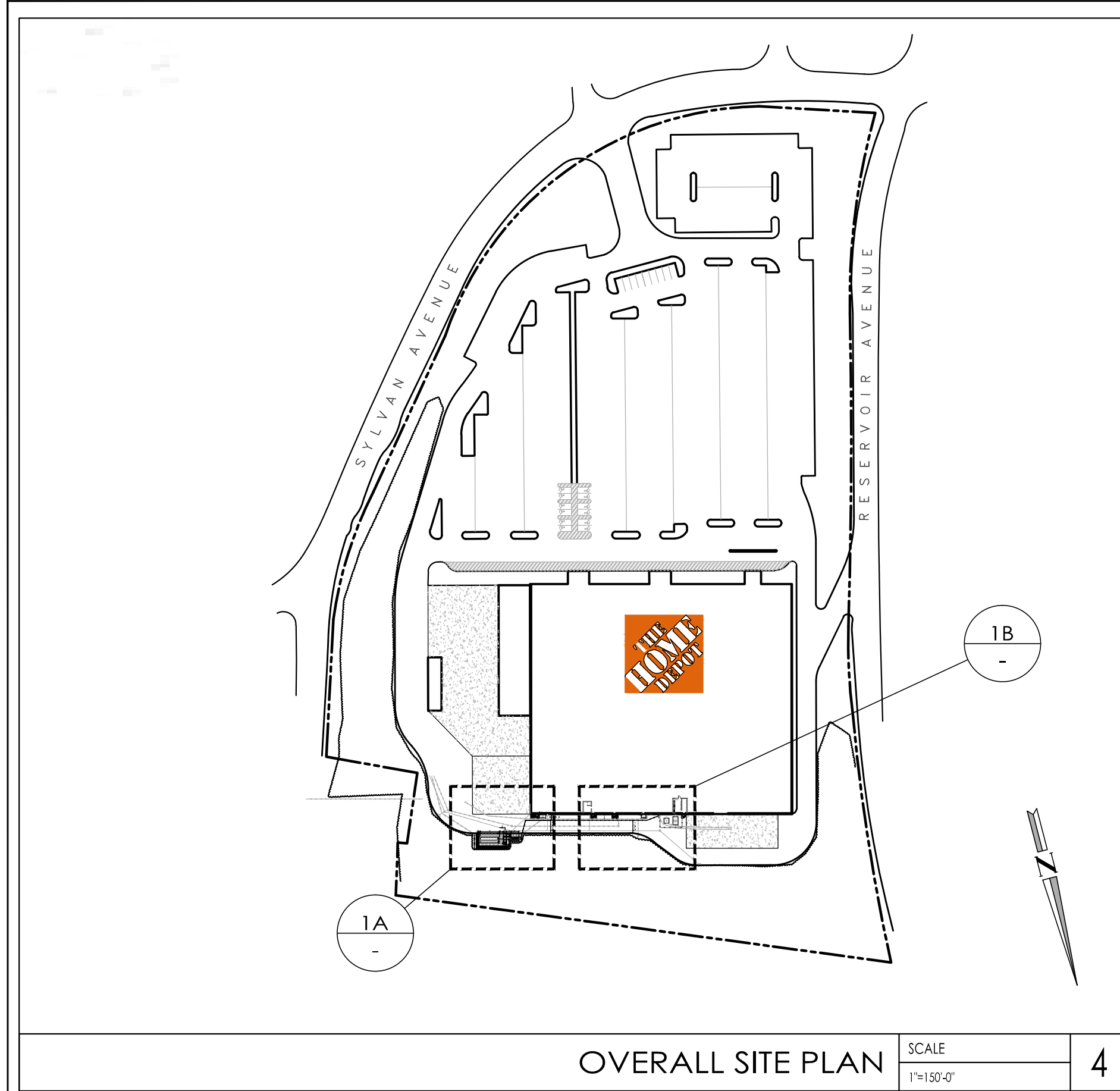
T 408 543 1500
F 408 543 1501

info@bloomenergy.com
www.bloomenergy.com

Be

© Bloom Energy Corporation 2019. All Rights Reserved
DOC-1015936 Rev B

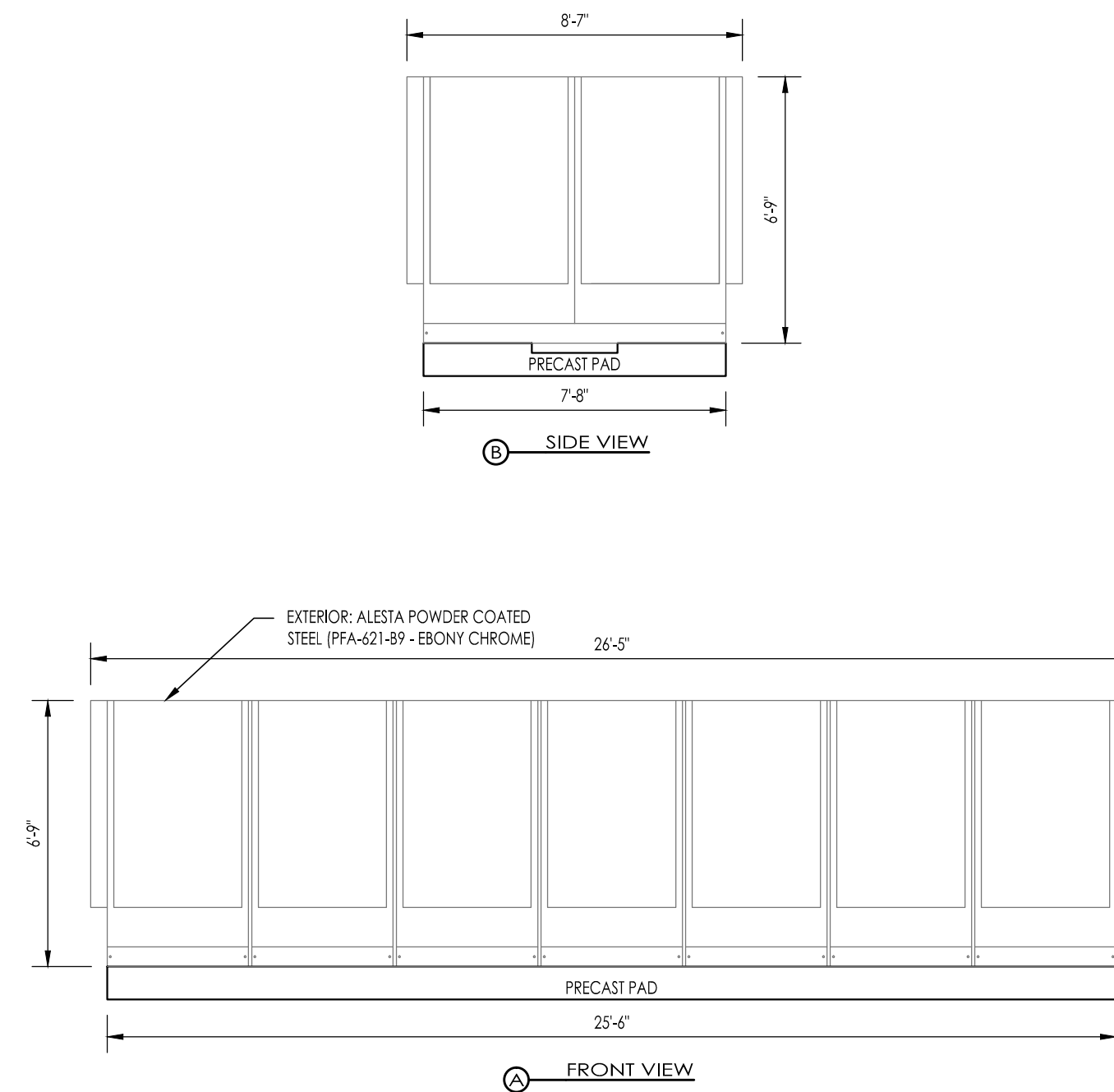
Attachment 2: As-Built Site Plan



OVERALL SITE PLAN SCALE 1"=10'-0" 4

SYSTEM			
Output Power	210 kW	Total System Weight	39,050 lbs
Voltage	480 VAC	Weight - Fuel Cell Power Module x 6	5,700 lbs
Maximum Output Current	252 Amps	Weight - Input/Output Module x 1	4,850 lbs
Frequency	60 Hz	Weight - Concrete Pad	22,160 lbs
FUEL REQUIREMENTS			
Connection	1" FNPT	Pressure	15 (+/-1) PSIG
Fuel Type	Natural Gas	Max Consumption Rate (50F, 1atm)	2MMBtu/hr
WATER REQUIREMENTS			
Connection	1/2" MNPT	Flow - Startup	< 0.8 gpm/min
Quality	Municipal Grade	Flow - Continuous	0 gpm/min
Minimum Pressure	30 PSI	Water Discharge	0 gpm/min
ELECTRICAL REQUIREMENTS			
Low Voltage		High Voltage	
Connection - ISP & DATA	RJ-45 Female	Connection - Power	3 Phase, 480VAC
Cable Type	CAT 6e	Cable Type	3 Wire + Gnd
Speed	70 Kbps/each	Cable Size - Power	400 KCMIL
Conduit Size	1"	Cable Size - Ground	1/0 AWG
Connection - Heater Type	120VAC	Conduit Size	3"
Cable Type	12/3 AWG		
Conduit Size	1"		

BLOOMENERGY ES-5700 SPECIFICATION 3



TYP. ELEV. OF BLOOMENERGY ES UNIT SCALE 3"=1'-0" 2

RESPONSIBILITY NOTES

- THE FOLLOWING EQUIPMENT SHOWN ON THESE PLANS WILL BE PROVIDED AND DELIVERED BY BLOOM ENERGY. APPLICABLE TRADES TO MOUNT AND MAKE FINAL CONNECTIONS:
 - POWER DISTRIBUTION MODULE (PDS)
 - WATER DEIONIZATION MODULE (WDM)
 - TELEMETRY SECTION (TS)
 - SIGNAGE (SEE SAFETY SIGNAGE)
 - SITE KIT (SEE SITE KIT NOTES)
- THE FOLLOWING EQUIPMENT SHOWN ON THESE PLANS WILL BE PROVIDED, DELIVERED AND MOUNTED BY BLOOM ENERGY. APPLICABLE TRADES TO MAKE FINAL CONNECTIONS:
 - CLEAN ENERGY SERVER
 - PRE-CAST ENERGY SERVER PAD

SITE KIT NOTES

- BLOOMENERGY TO PROVIDE AND DELIVER THE SITE KIT.
- ELECTRICAL AND PLUMBING CONTRACTOR TO INSTALL SITE KITS, CONSISTING OF PAD, FLOORING AND BUS BARS, ON THE PRECAST CONCRETE PAD PER MANUFACTURER SPECIFICATIONS.
- PWM DEFLECTORS ARE NOT REQUIRED ON THIS SITE.

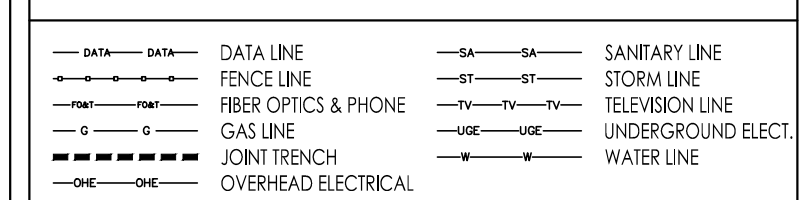
UTILITIES

GAS: SOUTHERN CONNECTICUT GAS (SCG)
ELECTRIC: UNITED ILLUMINATING COMPANY (UI)

CONDUIT & PIPE LENGTHS

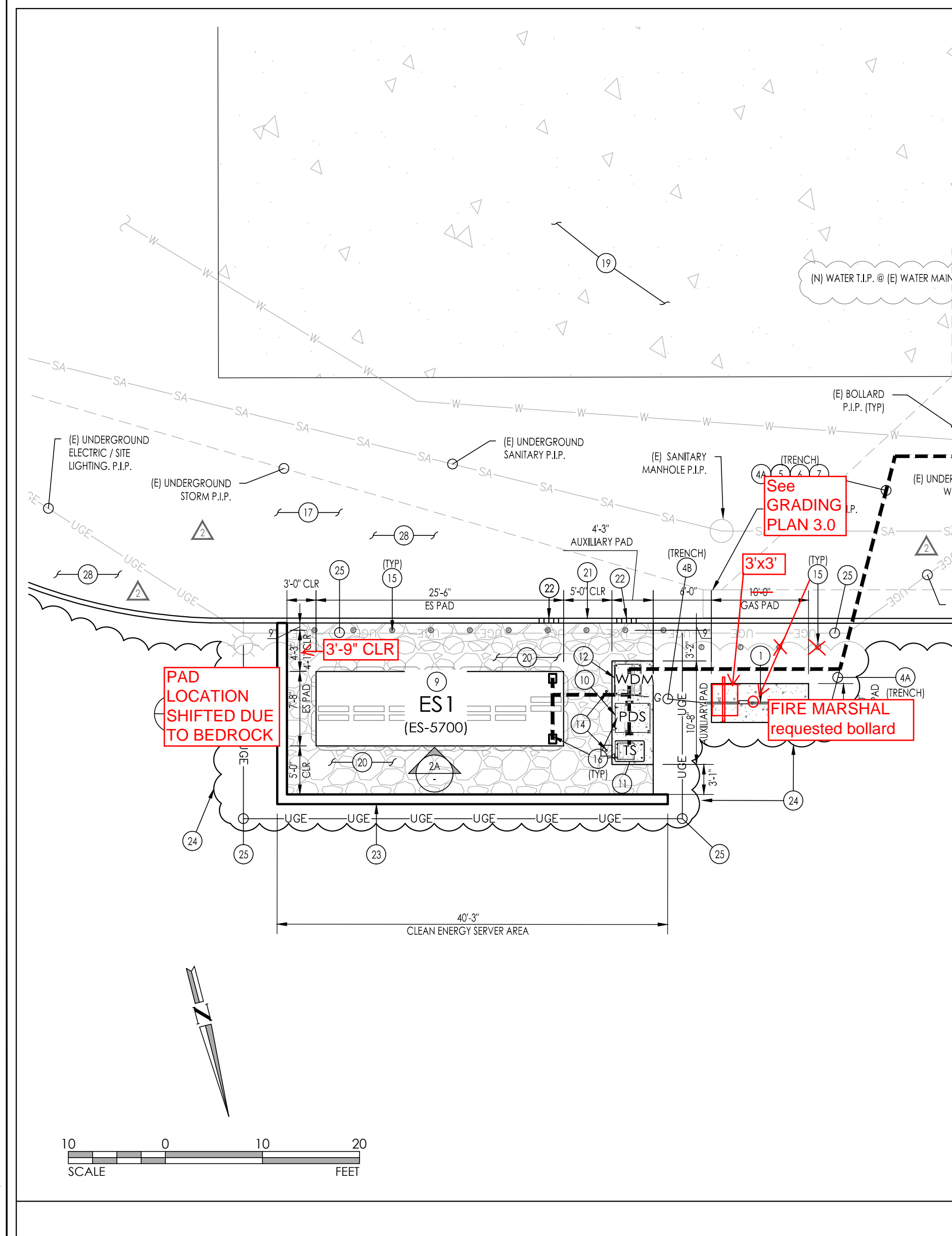
TYPE	TOTAL DISTANCE FROM TIE-IN TO ES UNIT (LINEAR)
GAS PIPE	1235'
ELECTRICAL CONDUIT	1285'
DATA CONDUIT	1105'
WATER PIPE	1145'

LEGEND OF UTILITY LINES

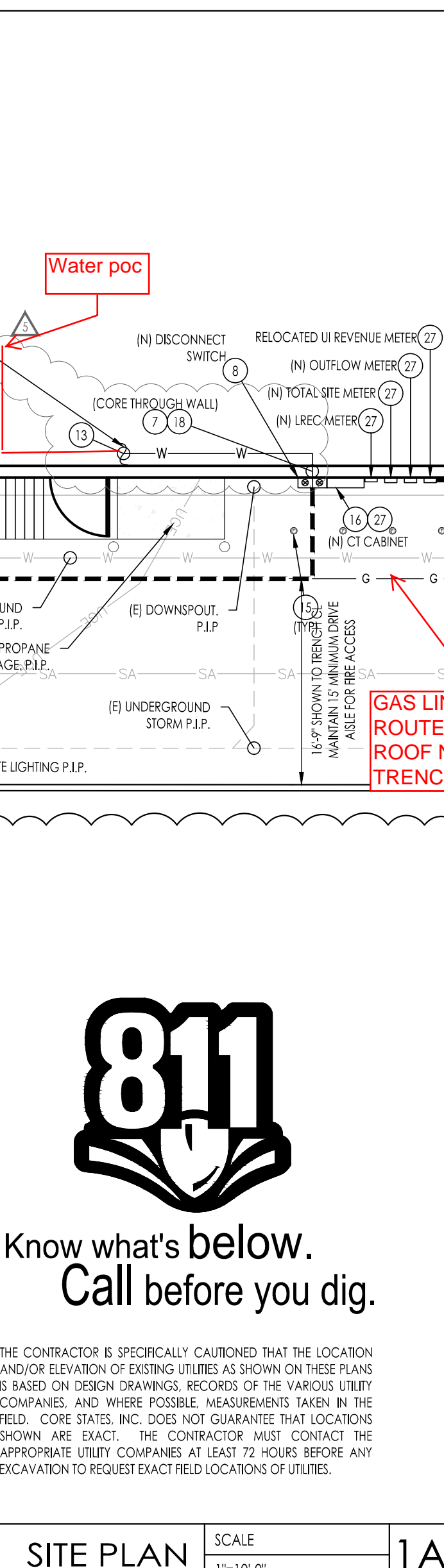


KEYNOTES

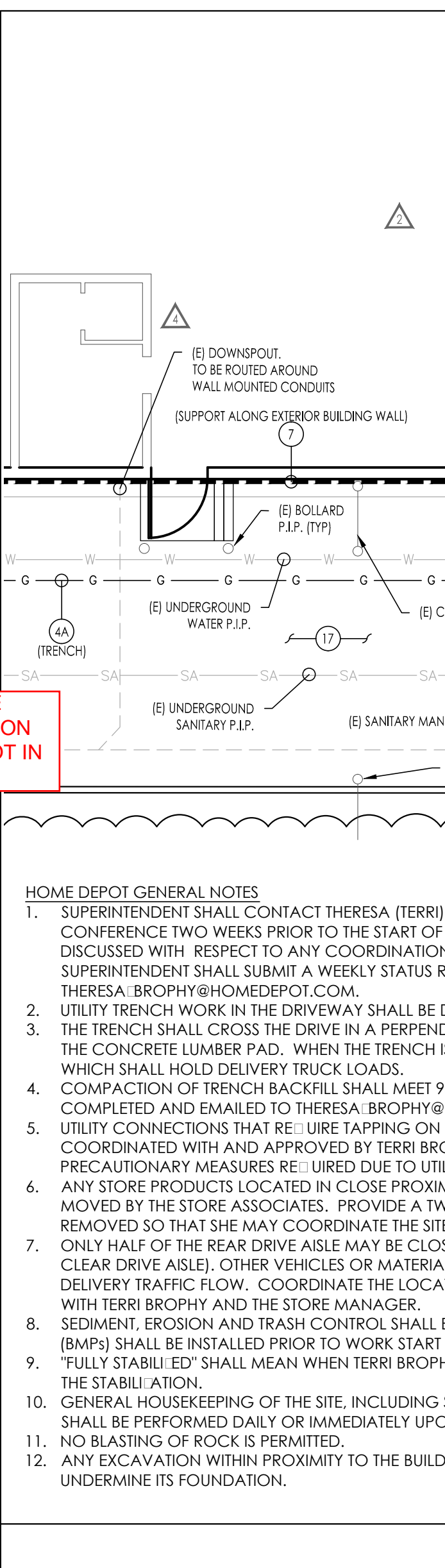
- (N) UTILITY GAS METER SET ASSEMBLY (MSA) FOR CLEAN ENERGY SERVER. COORDINATE LOCATION & INSTALLATION REQUIREMENTS WITH UTILITY COMPANY PRIOR TO INSTALLATION. MAINTAIN MINIMUM 5'-0" CLEARANCE FROM ALL EXISTING SOURCES. CONTRACTOR TO PROVIDE CAST-IN-PLACE CONCRETE PAD PER GAS ASSEMBLY PAD (DETAIL 3/0). MSA & INTERCONNECTION PER NATURAL GAS DIAGRAM (DETAIL 1/5.0). ADD IMPACT PROTECTION AS INDICATED BY UTILITY COMPANY.
- NOT USED.
- (N) GAS SERVICE TAP BY SOUTHERN CONNECTICUT GAS. EXACT LOCATION TO BE COORDINATED WITH UTILITY. REQUIREMENTS PER SOUTHERN CONNECTICUT GAS.
- (N) GAS PIPE FROM (N) GAS TAP TO TERMINATE AT (N) UTILITY MSA INSTALLED BY UTILITY COMPANY. SIZE & TRENCHING REQUIREMENTS PER UTILITY COMPANY.
- (N) GAS PIPE FROM (N) UTILITY GAS MSA TO TERMINATE AT (N) ES UNIT INSTALLED BY CONTRACTOR. DETAILS PER GRADING PLAN (SHEET 3.0). SIZE(S) PER INTERCONNECTION DIAGRAM (SHEET 5.0).
- (N) ELECTRICAL CONDUIT & WIRES FROM (N) PDS TO (N) DISCONNECT WITH FINAL TERMINATION AT (E) SWITCHBOARD. DETAILS PER GRADING PLAN (SHEET 3.0). SIZE(S) PER ONE LINE DIAGRAM (SHEET 6.1).
- (N) DATA CONDUIT & PULL STRING FROM (N) TS TO TERMINATE INSIDE BUILDING. DETAILS PER GRADING PLAN (SHEET 3.0). SIZE(S) PER ELECTRICAL DATA DETAILS (SHEET 6.2).
- (N) DATA CONDUIT & PULL STRING FROM (E) UI REVENUE METER LOCATION TO RELOCATED UI METER ON EXTERIOR BUILDING WALL. DETAILS PER GRADING PLAN (SHEET 3.0). SIZE(S) PER ELECTRICAL DATA DETAILS (SHEET 6.2).
- (N) WATER PIPE FROM BUILDING DOMESTIC WATER SYSTEM TO (N) WDM. CONNECT TO NEAREST AVAILABLE LOCATION. DETAILS PER GRADING PLAN (SHEET 3.0). SIZE(S) PER INTERCONNECTION DIAGRAM (SHEET 5.0).
- (N) DISCONNECT SWITCH & NEMA 3R ENCLOSURE. DISCONNECT SPECIFICATIONS PER ONE LINE DIAGRAM (SHEET 6.1). MOUNT TO BUILDING WALL PER MANUFACTURER SPECIFICATIONS. ENSURE LOCATION MEETS ALL REQUIRED N.E.C. CLEARANCES. PROVIDE MODEL NUMBER ON THE OUTSIDE OF THE FRONT PANEL. COMPLETE SPECIFICATION PER ELEC. SPECIFICATIONS (SHEET 8.0). SECTION 16A-2 & RELOCATE AND PARKING SIGN AS NECESSARY.
- (N) BLOOMENERGY ES-5700 ENERGY SERVER. PRE-CAST PAD & MOUNTING SPECIFICATIONS PER PRE-CAST CONCRETE PAD. PAD PLACEMENT PER GRADING PLAN (SHEET 3.0). PIPE & CONDUIT STUB-UP LOCATIONS PER PIPE PLAN & DETAILS (SHEET 4.0) & ELECTRICAL CONDUIT DETAILS (SHEET 4.3), RESPECTIVELY.
- (N) POWER DISTRIBUTION SECTION (PDS). CAST-IN-PLACE PAD AND MOUNTING SPECIFICATIONS PER GRADING PLAN (SHEET 3.0). CONDUIT STUB-UP LOCATIONS PER ELECTRICAL CONDUIT DETAILS (SHEET 4.3).
- (N) TELEMETRY SECTION (TS) WITH FACTORY WIRED CLEAN ENERGY SERVER EMERGENCY POWER-OFF SWITCH (EPO). CAST-IN-PLACE PAD AND MOUNTING SPECIFICATIONS PER GRADING PLAN (SHEET 3.0). CONDUIT STUB-UP LOCATIONS PER ELECTRICAL CONDUIT DETAILS (SHEET 4.3).
- (N) WATER DEIONIZATION MODULE (WDM). CAST-IN-PLACE PAD AND MOUNTING SPECIFICATIONS PER GRADING PLAN (SHEET 3.0). PIPE & CONDUIT STUB-UP LOCATIONS PER PIPE PLAN & DETAILS (SHEET 4.0) & ELECTRICAL CONDUIT DETAILS (SHEET 4.3), RESPECTIVELY.
- (N) WATER TAP. IF PRESSURE EXCEEDS 150 PSIG, COORDINATE WITH BLOOMENERGY. PURCHASE & INSTALL PRESSURE REGULATOR PRIOR TO WDM.
- (N) 10'-0" COPPER GROUNDING RODS 6'-0" APART WITH ERCO T414D INSPECTION WELL. SPECIFICATIONS PER ONE LINE DIAGRAM (SHEET 6.1).
- (N) GUARD POST (TPN). INSTALL GUARD POST AFTER ES UNITS HAVE BEEN INSTALLED. TYPE, SIZE AND LOCATION PER IMPACT PROTECTION PLAN (SHEET 3.2). ENSURE SLEEVES FLUSH WITH GRADE AND NO ANGLES OR HOOKS EXIST THAT IMPEDERE FORK-LIFT ACCESS.
- (N) PROVIDE SECURITY BOXES OF CONDUIT & WIRE AT ALL ELECTRICAL STUB UP LOCATIONS.
- (N) ASPHALT PAVEMENT TO REMAIN. RESTORE TRENCHES PER SHEET 3.1.
- (N) CURB TO BE REMOVED AND REPLACED WITH 1" DEPRESSIONED CONCRETE CURB. SEE DETAIL 7 ON SHEET 3.1.
- (N) CONCRETE LOADING AREA TO REMAIN.
- (N) GRAVEL SERVICE AREA PER GRADING PLAN (SHEET 3.0).
- (N) CURB TO BE REMOVED AND REPLACED WITH 1" DEPRESSIONED CONCRETE CURB. SEE DETAIL 7 ON SHEET 3.1.
- (N) CONCRETE LOADING AREA TO REMAIN.
- (N) SOUND WALL. WALL HEIGHT, MEASURED TO BOTTOM OF FUEL CELL / TOP OF PRECAST CONCRETE PAD, SHALL BE A MINIMUM OF 8'-0". REFER TO ELEVATIONS ON SHEET 3.1 AND MANUFACTURER PROVIDED DETAILS.
- (N) TREE LINE. (E) TREES TO BE TRIMMED. 10'-0" CLEARANCE TO BE MAINTAINED FROM ANY BRANCH TO THE UNIT. 15'-0" CLEARANCE TO BE MAINTAINED FROM ANY BRANCH TO THE UNIT. 6'-0" CLEARANCE TO BE MAINTAINED FROM ANY BRANCH TO THE UNIT.
- RELOCATE (E) UNDERGROUND ELECTRIC IN KIND WHERE SHOWN. PROTECT AS REQUIRED BEYOND LIMITS OF RELOCATION.
- NOT USED.
- (N) UTILITY APPROVED METERS & CT CABINET & NEMA 3R ENCLOSURES. SPECIFICATIONS PER ONE LINE DIAGRAM (SHEET 6.1). MOUNT TO BUILDING WALL & PER MANUFACTURER SPECIFICATIONS. ENSURE LOCATION MEETS ALL REQUIRED N.E.C. CLEARANCES. PROVIDE MODEL NUMBER ON THE OUTSIDE OF THE FRONT PANEL. COMPLETE SPECIFICATION PER ELECTRICAL SPECIFICATIONS (SHEET 8.0). SECTION 16A-2.6.
- HOME DEPOT FACILITY UTILIZES THESE AREAS FOR PRODUCT STORAGE. COORDINATE WITH TERRI BROPHY TO HAVE AREA CLEARED AS REQUIRED. REFER TO ALL HOME DEPOT GENERAL NOTES HEREON.



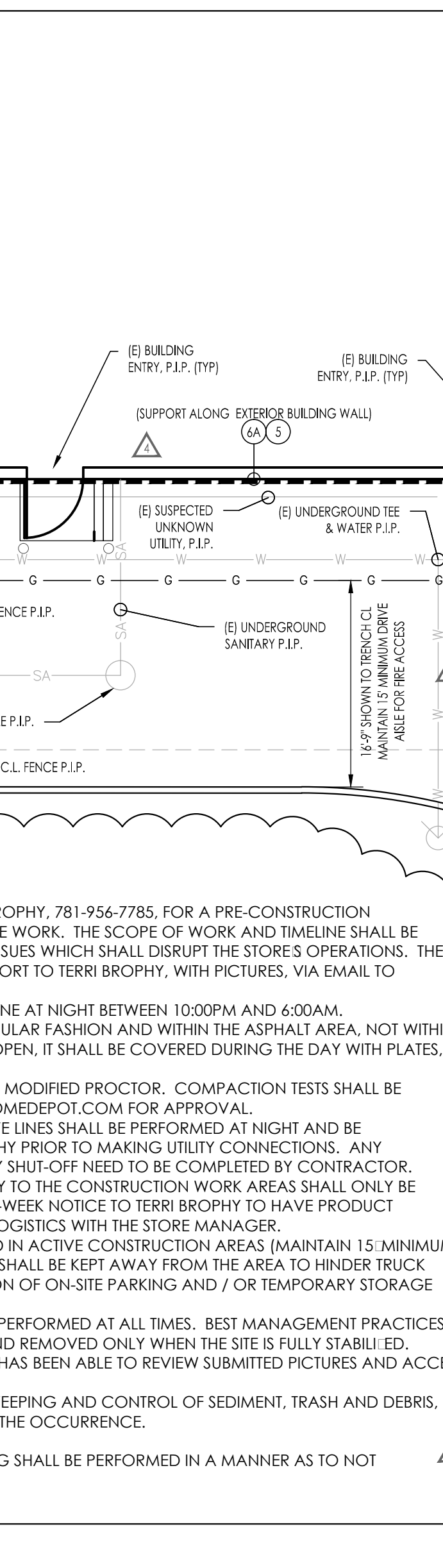
SITE PLAN SCALE 1"=10'-0" 1A



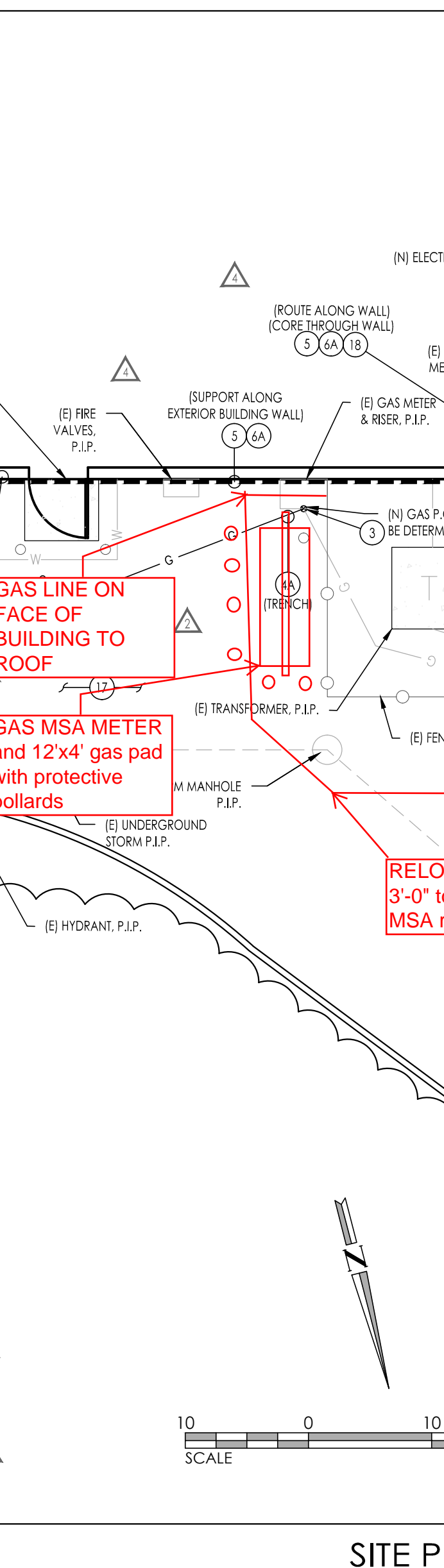
SITE PLAN SCALE 1"=10'-0" 1B



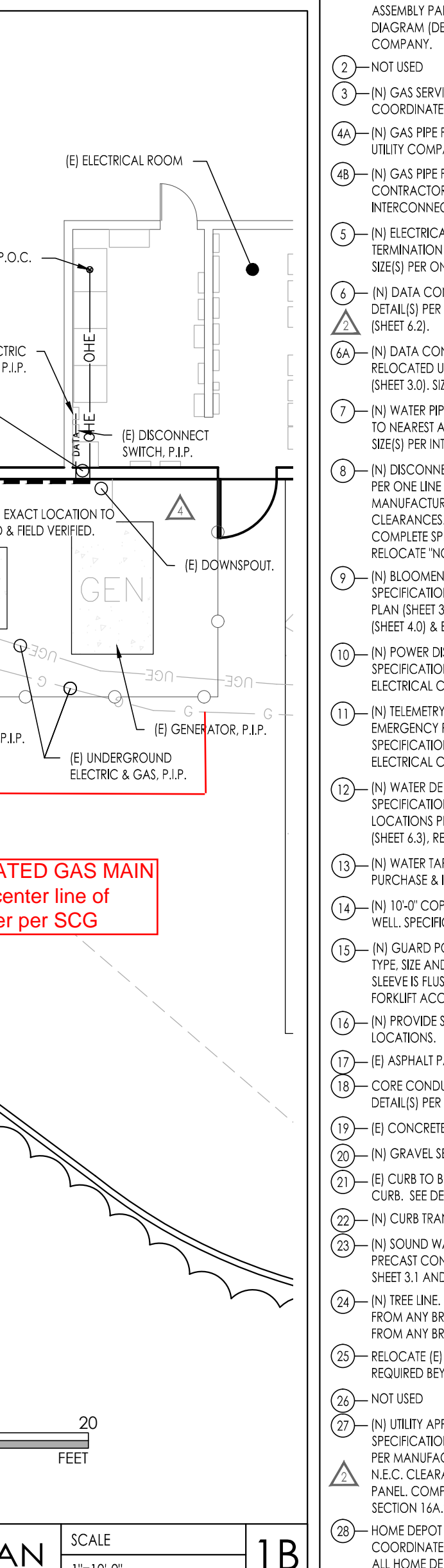
SITE PLAN SCALE 1"=10'-0" 1A



SITE PLAN SCALE 1"=10'-0" 1B



SITE PLAN SCALE 1"=10'-0" 1B



Drawing: Bloom Energy ESC-16029 Home Depot, Bridgeport, CT | Drawing: ESC-16029 - Home Depot (Bridgeport, CT) - 2.0 Site Plan (Rev. 04/18/14)
 User: BPOC/CHK
 Date: 04/18/14
 Plot Date/Time: Apr 25, 14, 14:53

THE CONTRACTOR IS SPECIFICALLY CAUTIONED THAT THE LOCATION AND/OR ELEVATION OF EXISTING UTILITIES AS SHOWN ON THESE PLANS IS BASED ON DESIGN DRAWINGS, RECORDS OF THE VARIOUS UTILITY COMPANIES, AND WHERE POSSIBLE, MEASUREMENTS TAKEN IN THE FIELD. CORE STATES, INC. DOES NOT GUARANTEE THAT LOCATIONS SHOWN ARE EXACT. THE CONTRACTOR MUST CONTACT THE APPROPRIATE UTILITY COMPANIES AT LEAST 72 HOURS BEFORE ANY EXCAVATION TO REQUEST EXACT RELOCATIONS OF UTILITIES.

- HOME DEPOT GENERAL NOTES
- SUPERINTENDENT SHALL CONTACT THERESA (TERRI) BROPHY, 781-956-7785, FOR A PRE-CONSTRUCTION CONFERENCE TWO WEEKS PRIOR TO THE START OF THE WORK. THE SCOPE OF WORK AND TIMELINE SHALL BE DISCUSSED WITH RESPECT TO ANY COORDINATION ISSUES WHICH SHALL DISRUPT THE STORE'S OPERATIONS. THE SUPERINTENDENT SHALL SUBMIT A WEEKLY STATUS REPORT TO TERRI BROPHY, WITH PICTURES, VIA EMAIL TO THERESA.BROPHY@HOMEDEPOT.COM.
 - UTILITY TRENCH WORK IN THE DRIVEWAY SHALL BE DONE AT NIGHT BETWEEN 10:00PM AND 6:00AM.
 - THE TRENCH SHALL CROSS THE DRIVE IN A PERPENDICULAR FASHION AND WITHIN THE ASPHALT AREA, NOT WITHIN THE CONCRETE LUMBER PAD. WHEN THE TRENCH IS OPEN, IT SHALL BE COVERED DURING THE DAY WITH PLATES, WHICH SHALL HOLD DELIVERY TRUCK LOADS.
 - COMPACTION OF TRENCH BACKFILL SHALL MEET 95% MODIFIED PROCTOR. COMPACTION TESTS SHALL BE COMPLETED AND EMAILED TO THERESA.BROPHY@HOMEDEPOT.COM FOR APPROVAL.
 - UTILITY CONNECTIONS THAT REQUIRE TAPPING ON LIVE LINES SHALL BE PERFORMED AT NIGHT AND BE COORDINATED WITH AND APPROVED BY TERRI BROPHY PRIOR TO MAKING UTILITY CONNECTIONS. ANY PRECAUTIONARY MEASURES REQUIRED DUE TO UTILITY SHUT-OFF NEED TO BE COMPLETED BY CONTRACTOR.
 - ANY STORE PRODUCTS LOCATED IN CLOSE PROXIMITY TO THE CONSTRUCTION WORK AREAS SHALL ONLY BE MOVED BY THE STORE ASSOCIATES. PROVIDE A TWO-WEEK NOTICE TO TERRI BROPHY TO HAVE PRODUCT REMOVED SO THAT SHE MAY COORDINATE THE SITE LOGISTICS WITH THE STORE MANAGER.
 - ONLY HALF OF THE REAR DRIVE AISLE MAY BE CLOSED IN ACTIVE CONSTRUCTION AREAS (MAINTAIN 15' MINIMUM CLEAR DRIVE AISLE). OTHER VEHICLES OR MATERIALS SHALL BE KEPT AWAY FROM THE AREA TO HINDER TRUCK DELIVERY TRAFFIC FLOW. COORDINATE THE LOCATION OF ON-SITE PARKING AND / OR TEMPORARY STORAGE WITH TERRI BROPHY AND THE STORE MANAGER.
 - SEDIMENT, EROSION AND TRASH CONTROL SHALL BE PERFORMED AT ALL TIMES. BEST MANAGEMENT PRACTICES (BMPs) SHALL BE INSTALLED PRIOR TO WORK START AND REMOVED ONLY WHEN THE SITE IS FULLY STABILIZED.
 - "FULLY STABILIZED" SHALL MEAN WHEN TERRI BROPHY HAS BEEN ABLE TO REVIEW SUBMITTED PICTURES AND ACCEPT THE STABILIZATION.
 - GENERAL HOUSEKEEPING OF THE SITE, INCLUDING SWEEPING AND CONTROL OF SEDIMENT, TRASH AND DEBRIS, SHALL BE PERFORMED DAILY OR IMMEDIATELY UPON THE OCCURRENCE.
 - NO BLASTING OF ROCK IS PERMITTED.
 - ANY EXCAVATION WITHIN PROXIMITY TO THE BUILDING SHALL BE PERFORMED IN A MANNER AS TO NOT UNDERMINE ITS FOUNDATION.

Bloomenergy
 1350 Colchester Drive, Sunnyvale CA, 94089
 Tel: 408.543.5201
 Fax: 408.543.5201
 www.bloomenergy.com
 PROPRIETARY & CONFIDENTIAL

THE HOME DEPOT #6213
 HOM0600
 NEW CONSTRUCTION OF
 CLEAN ENERGY SERVER
 792 RESERVOIR AVE.
 BRIDGEPORT, CT 06606

GORE STATES group
 28 KNOTH BIRCH ROAD
 WATERBURY, NJ 02088
 www.gorestates.com

DOCUMENTS PREPARED BY CORE STATES GROUP, INCLUDING THIS ONE, SHALL BE THE PROPERTY OF CORE STATES GROUP AND NOT TO BE REPRODUCED OR USED FOR ANY OTHER PROJECTS WITHOUT THE WRITTEN PERMISSION OF CORE STATES GROUP. IT IS DONE AS A FAVOR TO OTHER PARTY. CORE STATES GROUP IS NOT BE HELD RESPONSIBLE FOR ANY LOSS, DAMAGE, INJURY OR DEATH THAT SPECIFICALLY INTENDED, USER SHALL BE RESPONSIBLE FOR OBTAINING NECESSARY PERMITS AND LOSSES. FROM ALL CLAIMS AND DAMAGES.

ISSUE	DATE	DESCRIPTION
02	03/26/14	REVISED PER UTILITY
04	04/18/14	REVISED PER CLIENT
05	04/25/14	REVISED WATERLINE

PROJECT INFORMATION		
JOB #	BEC-16029	
DATE:	01/27/14	
DRAWN BY:	JMB	
CHECKED BY:	TM/MVM	

MODEL (1) ES-5700
 SHEET TITLE
 SHEET NUMBER
 2.0