



Dish Wireless  
9601 South Meridian  
Englewood, CO 80112

June 23, 2023

Melanie A. Bachman  
Executive Director  
Connecticut Siting Council  
10 Franklin Square  
New Britain, CT 06051

**RE: Notice of Completion – TS-DISH-015-220603/ DISH Wireless, LLC NJJER01111B  
205 Kaechele Place, Bridgeport, Connecticut.**

Dear Ms. Bachman,

The purpose of this letter is to notify you that construction activity associated with the above referenced decision was completed on 02-24-2023, pursuant to the conditions of approval as stated in the applicable Council decision letter enclosed herein. Please contact me should you have any questions.

Sincerely,

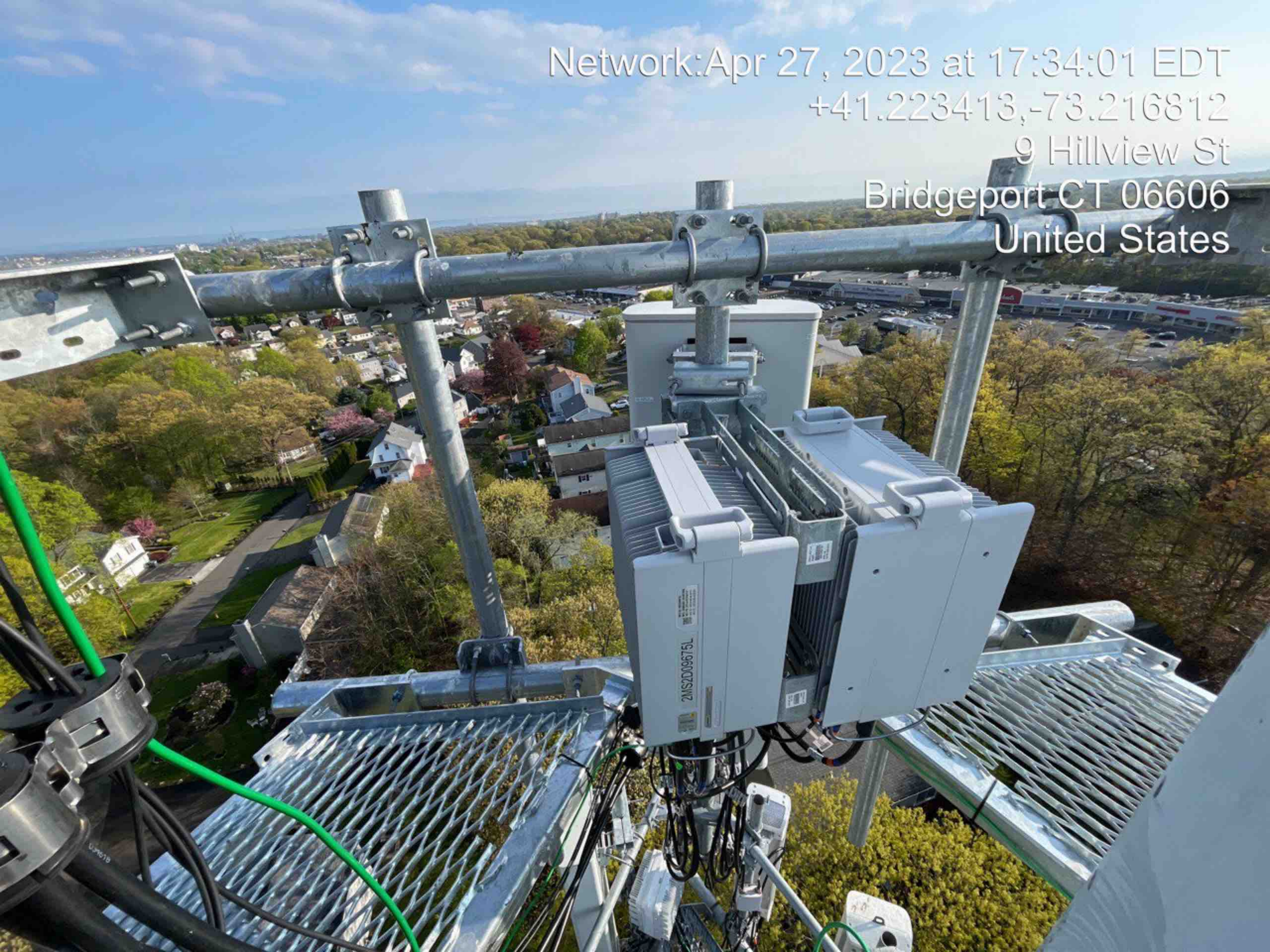
Aaron Melendez  
Construction Coordinator  
3 Adp Blvd  
Roseland, NJ 07068  
201-304-1874  
[aaron.melendez@dish.com](mailto:aaron.melendez@dish.com)

ENCL

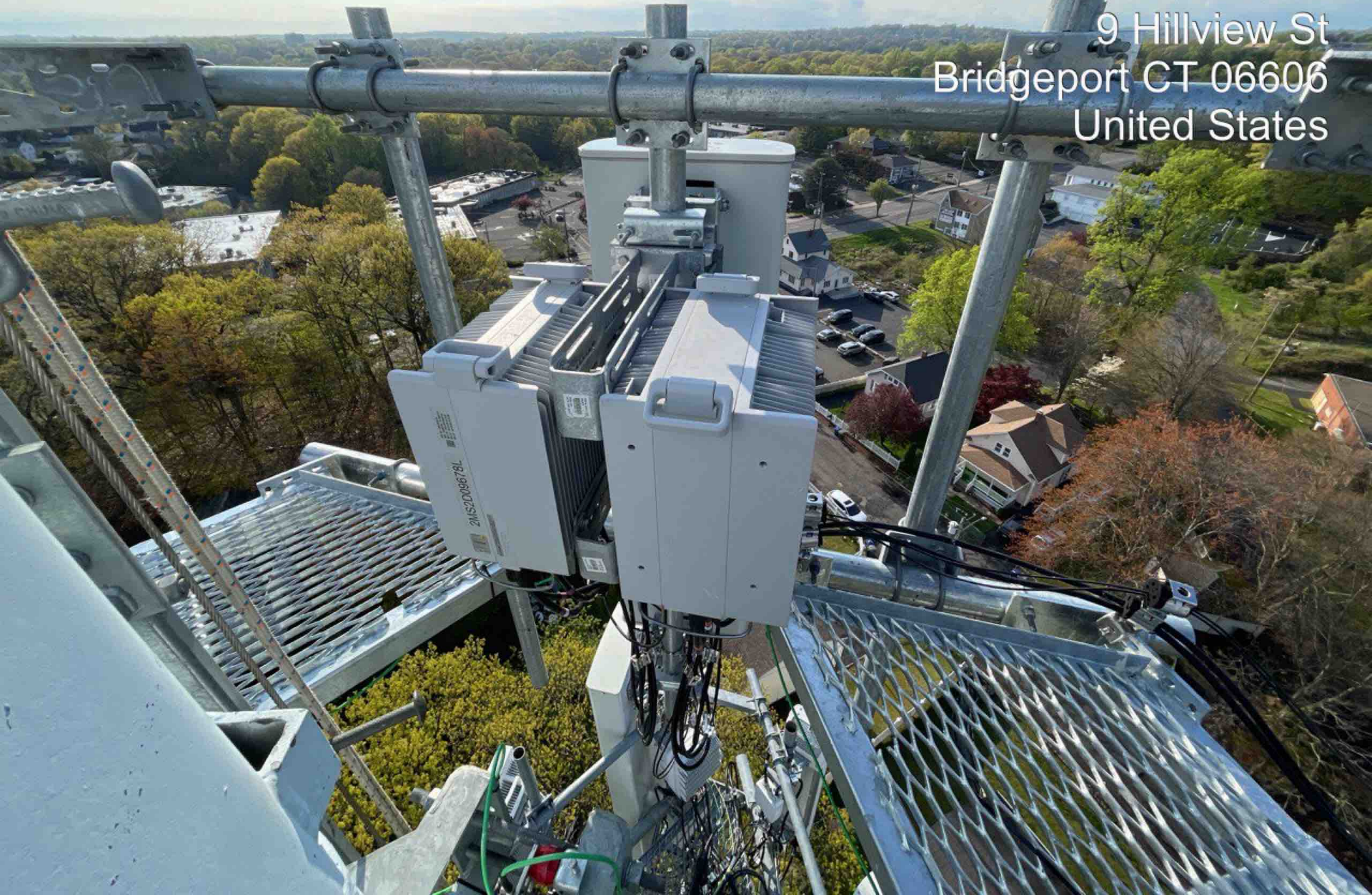
Network: Apr 27, 2023 at 17:32:34 EDT  
+41.223566,-73.217448  
43 Hillview St  
Bridgeport CT 06606  
United States



Network: Apr 27, 2023 at 17:34:01 EDT  
+41.223413,-73.216812  
9 Hillview St  
Bridgeport CT 06606  
United States



Network: Apr 27, 2023 at 17:34:57 EDT  
+41.223413,-73.216812  
9 Hillview St  
Bridgeport CT 06606  
United States





**INFORMATION**

This is an access point to an area with transmitting antennas. Obey all signs and barriers beyond this point. Call the OSHA NCC at 833-347-4632 for more information.

**NOTICE OF SAFETY PROGRAM IN EFFECT AT THIS SITE**

- 1. All personnel must wear hard hats at all times.
- 2. All personnel must wear safety glasses or eye protection at all times.
- 3. All personnel must wear safety shoes at all times.
- 4. All personnel must wear fall protection at all times.
- 5. All personnel must wear high-visibility clothing at all times.
- 6. All personnel must wear hearing protection at all times.
- 7. All personnel must wear respiratory protection at all times.
- 8. All personnel must wear gloves at all times.
- 9. All personnel must wear tool belts at all times.
- 10. All personnel must wear tool lanyards at all times.
- 11. All personnel must wear tool tags at all times.
- 12. All personnel must wear tool locks at all times.
- 13. All personnel must wear tool keys at all times.
- 14. All personnel must wear tool spacers at all times.
- 15. All personnel must wear tool washers at all times.
- 16. All personnel must wear tool nuts at all times.
- 17. All personnel must wear tool bolts at all times.
- 18. All personnel must wear tool screws at all times.
- 19. All personnel must wear tool washers at all times.
- 20. All personnel must wear tool nuts at all times.
- 21. All personnel must wear tool bolts at all times.
- 22. All personnel must wear tool screws at all times.
- 23. All personnel must wear tool washers at all times.
- 24. All personnel must wear tool nuts at all times.
- 25. All personnel must wear tool bolts at all times.
- 26. All personnel must wear tool screws at all times.
- 27. All personnel must wear tool washers at all times.
- 28. All personnel must wear tool nuts at all times.
- 29. All personnel must wear tool bolts at all times.
- 30. All personnel must wear tool screws at all times.

ingular  
EMERGENCY CALL  
888-95-5800

Proof Cam

38 Kaechele Pl, Bridgeport, CT 06606, USA  
41.2232002, -73.2167169  
Altitude : 5.25 m  
03.03.23 09:27 AM