



STATE OF CONNECTICUT

CONNECTICUT SITING COUNCIL

Ten Franklin Square, New Britain, CT 06051

Phone: (860) 827-2935 Fax: (860) 827-2950

E-Mail: siting.council@ct.gov

www.ct.gov/csc

VIA ELECTRONIC MAIL

August 8, 2019

Mark Roberts
QC Development
P.O. Box 916
Storrs, CT 06268

RE: **EM-CING-011-190729** - New Cingular Wireless PCS, LLC notice of intent to modify an existing telecommunications facility located at 1021 Blue Hills Avenue, Bloomfield, Connecticut.

Dear Mr. Roberts:

The Connecticut Siting Council (Council) is in receipt of your correspondence of August 5, 2019, submitted in response to the Council's July 30, 2019 notification of an incomplete request for exempt modification with regard to the above-referenced matter.

The submission renders the request for exempt modification complete and the Council will process the request in accordance with the Federal Communications Commission 60-day timeframe.

Thank you for your attention and cooperation.

Sincerely,

Melanie A. Bachman
Executive Director

MAB/IN/emr



Mark Roberts

From: Mark Roberts
Sent: Monday, August 5, 2019 9:21 AM
To: Robidoux, Evan
Cc: CSC-DL Siting Council
Subject: RE: Council Incomplete Letter for EM-CING-011-190724 (1021 Blue Hills Avenue, Bloomfield)
Attachments: CT1148_TOW MOD DRAWINGS.pdf
Importance: High

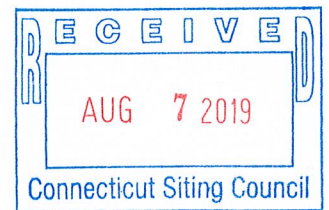
file copy

Hello – Please find attached a copy of the requested Tower Modification Design Drawing. A hard copy will follow via US Mail.

Please let me know if I can provide anything further.

Thanks

Mark Roberts
QC Development
860-670-9068



From: Robidoux, Evan <Evan.Robidoux@ct.gov>
Sent: Thursday, August 1, 2019 2:53 PM
To: Mark Roberts <mark.roberts@qcdevelopment.net>
Cc: CSC-DL Siting Council <Siting.Council@ct.gov>
Subject: Council Incomplete Letter for EM-CING-011-190724 (1021 Blue Hills Avenue, Bloomfield)

Please see the attached correspondence.

Evan Robidoux
Clerk Typist
Connecticut Siting Council
10 Franklin Square
New Britain, CT 06051

PER THE INTERNATIONAL BUILDING CODE THIS STRUCTURE IS CLASSIFIED AS:

1. CONSTRUCTION TYPE V-B (TABLE 601)
2. GROUP U OCCUPANCY (SECTION 312.1 UNOCCUPIED TOWER SITE)

MODIFICATION AND DESIGN DRAWINGS FOR AN EXISTING 125' NUDD SELF SUPPORTING TOWER

PROPOSED CARRIER: AT&T

SITE: CT01725-A-SBA / BLOOMFIELD

COORDINATES (LATITUDE: 41.82012°, LONGITUDE: -72.69651°)

CONSTRUCTION CLASS

TES HAS DETERMINED THIS AS A
CLASS IV CONSTRUCTION PROJECT
PER ANSI/ASSP A10.48

PLEASE NOTE THIS SET OF DRAWINGS IS FOR INSTALLATION AND ASSEMBLY ONLY. FABRICATION DETAIL DRAWINGS ARE NOT PROVIDED AND MUST BE COMPLETED BY THE STEEL FABRICATOR SELECTED. TES CAN PROVIDE THE FABRICATION DETAIL DRAWINGS FOR AN ADDITIONAL FEE.

SHEET	SHEET TITLE	REV
T-1	TITLE SHEET	0
BOM	BILL OF MATERIALS	0
GN-1	GENERAL NOTES	0
A-1	TOWER PROFILE	0
A-2	DIAGONAL REPLACEMENT DETAILS	0
A-3	MID-PANEL HORIZONTAL ASSEMBLY - 2 BAYS (6.625" O.D. PIPE LEG)	0
A-4	DIAGONAL END CLIP REINFORCEMENT	0

NOTE:

1. THE MODIFICATION DRAWINGS ARE BASED ON THE TES PROJECT NO. 69813, DATED 02/26/19.



Tower Engineering Solutions
1320 GREENWAY DRIVE, SUITE 600
IRVING, TX 75038
PHONE: (972) 483-0607



5900 BROKEN SOUND PARKWAY, NW
BOCA RATON, FL 33487
(800)-487-SITE

TES JOB NO:
70654

CUSTOMER SITE NO:
CT01725-A-SBA
CUSTOMER SITE NAME:
BLOOMFIELD
1021 BLUE HILLS AVENUE
BLOOMFIELD, CT 06002



6/6/19

DRAWN BY: CAH CHECKED BY: FA/AD

REV.	DESCRIPTION	BY	DATE
1	FIRST ISSUE	CAH	06/06/19
△			
△			
△			

SHEET TITLE:

TITLE SHEET

This drawing/document is the property of Tower Engineering Solutions, LLC. Information contained herein is considered confidential in nature and is to be used only for the specific site that it was intended for. Reproduction, transmission, publication or disclosure by any method is prohibited except by express written permission from Tower Engineering Solutions, LLC. Without exception, the information on this drawing/document remains the property of Tower Engineering Solutions, LLC.

SHEET NUMBER: T-1 REV #: 0

BILL OF MATERIALS

QUANTITY REQUIRED	QUANTITY PROVIDED	PART NUMBER	DESCRIPTION	LENGTH	SHEET LIST	PIECE WEIGHT	WEIGHT (lb)	NOTES
MATERIAL & HARDWARE								
12	12	D-1	L 3" X 3" X 1/4" X 17'-0" A36	---	A-2,F-1	87.50	1050.0	GALVANIZED (FINAL CUT LENGTH TO BE DETERMINED IN FIELD)
60	63	---	BOLT 5/8" X 2" A325	---	A-2,A-3	0.38	24.0	(1) HHN & LKW-EA GALVANIZED
6	7	---	BOLT 5/8" X 2 1/4" A36	---	A-2	0.40	2.8	(1) HHN & LKW-EA GALVANIZED
6	6	HBR6625W	PL 3/4" X 7" X 9 1/8" A36 WELDMENT BRACKET	---	A-3,BR-1	16.62	99.8	GALVANIZED
12	12	MH-11G	3" X 3" X 1/4" X 5'-6" A36	---	A-3,F-1	28.30	339.6	GALVANIZED (FINAL CUT LENGTH TO BE DETERMINED IN FIELD)
6	6	MH-15-300CP1	PL 3/8" X 3" X 1'-9 1/4" A36	---	A-3,MH-CP	6.90	41.4	GALVANIZED
12	13	MS02-625-6750-900	RU-BOLT 5/8" X 6 3/4" I.W. X 9" I.L. A36 OR EQUIV	---	A-3,RBC-1	2.24	29.2	(2) HHN & LKW-EA GALVANIZED
36	36	ECP-1	PL 3/8" X 2 1/2" X 1'-0" A36	---	A-4,F-1	3.30	118.8	GALVANIZED
108	114	---	BOLT 1/2" X 2" A325	---	A-4	0.22	25.1	(1) HHN & LKW-EA GALVANIZED
72	76	---	SPACER/SHIM FOR 1/2" BOLT (3/8" THICK)	---	A-4			GALVANIZED
COATING								
7	7	---	LANCO /HENRY 287 WHITE ACRYLIC ELASTOMERIC COATING AND SEALER OR EQUIV (5 GALLON)	---	A-1	---	---	PROVIDED BY CONTRACTOR
<p>Note:: Please note this set of drawings is for installation and assembly only. Fabrication Detail Drawings are not provided and must be completed by the steel fabricator selected. TES can provide the Fabrication Detail Drawings for an additional fee</p> <p>NOTE: ALL MATERIALS REQUIRED FOR FOUNDATION MODIFICATIONS THAT ARE NOT LISTED IN THE BILL OF MATERIALS WILL BE PROVIDED BY CONTRACTOR. REFERENCE MODIFICATION SHEETS.</p> <p>NOTE: ALL MATERIALS, WHICH WEREN'T LISTED IN THE BOM, ARE ASSUMED TO BE PROVIDED BY THE CONTRACTOR.</p>								
						TOTAL WEIGHT (lb) = 1730.7		PAGE 1 OF 1



Tower Engineering Solutions
 1320 GREENWAY DRIVE, SUITE 600
 IRVING, TX 75038
 PHONE: (972) 483-0607



5900 BROKEN SOUND PARKWAY, NW
 BOCA RATON, FL 33487
 (800)-487-SITE

TES JOB NO:
 70654

CUSTOMER SITE NO:
 CT01725-A-SBA

CUSTOMER SITE NAME:
 BLOOMFIELD

1021 BLUE HILLS AVENUE
 BLOOMFIELD, CT 06002

DRAWN BY: CAH | CHECKED BY: FA/AD

REV.	DESCRIPTION	BY	DATE
1	FIRST ISSUE	CAH	06/06/19

SHEET TITLE:

BILL OF MATERIALS

This drawing/document is the property of Tower Engineering Solutions, LLC. Information contained herein is considered confidential in nature and is to be used only for the specific site that it was intended for. Reproduction, transmission, publication or disclosure by any method is prohibited except by express written permission from Tower Engineering Solutions, LLC. Without exception, the information on this drawing/document remains the property of Tower Engineering Solutions, LLC.

SHEET NUMBER: **BOM** | REV #: **0**

Copyright 2019 Tower Engineering Solutions, LLC

GENERAL NOTES

1. ALL WORK SHALL COMPLY WITH THE ANSI/TIA-222-G, ANSI/ASSP A10.48/2018 CONNECTICUT STATE BUILDING CODE, AND ANY OTHER GOVERNING BUILDING CODES AND OSHA SAFETY REGULATIONS.
2. ALL WORK INDICATED ON THE DRAWINGS SHALL BE PERFORMED BY QUALIFIED CONTRACTORS EXPERIENCED IN TELECOMMUNICATIONS TOWER, POLE AND FOUNDATION CONSTRUCTION.
3. THE CONTRACTOR SHALL BE RESPONSIBLE FOR THE DESIGN AND FABRICATION OF ALL MISCELLANEOUS PARTS (SUCH AS SHIMS), TEMPORARY SUPPORTS, AND GUYINGS, ETC., PER ANSI/ASSP A10.48, TO COMPLETE THE ASSEMBLY AS SHOWN IN THE DRAWINGS.
4. CONTRACTOR SHALL PROCEED WITH THE INSTALLATION WORK CAREFULLY SO THE WORK WILL NOT DAMAGE ANY EXISTING CABLE, EQUIPMENT OR THE STRUCTURE.
5. THE USE OF GAS TORCH OR WELDER, ARE NOT ALLOWED ON ANY TOWER STRUCTURE WITHOUT THE CONSENT OF THE TOWER OWNER.
6. GENERALLY THE CONTRACTOR IS RESPONSIBLE TO CONDUCT AN ONSITE VISIT SURVEY OF THE JOB SITE AFTER AWARD, AND REPORT ANY ISSUES WITH THE SITE TO **TES** BEFORE PROCEEDING CONSTRUCTION.

FABRICATION

1. ALL STEEL SHALL MEET OR EXCEED THE MINIMUM STRENGTH AS SPECIFIED IN THE DRAWINGS. IF YIELD STRENGTH WAS NOT NOTED IN THE DRAWINGS, CONTRACTORS SHALL CONTACT TES FOR DIRECTION.
2. ALL FIELD CUT EDGES SHALL BE GROUND SMOOTH. ALL FIELD CUT AND DRILLED SURFACES SHALL BE REPAIRED WITH A MINIMUM OF TWO COATS OF ZRC GALVALITE COLD GALVANIZING COMPOUND PER ASTM A780 AND MANUFACTURER'S RECOMMENDATIONS.

WELDING

1. ALL WELDING SHALL BE PERFORMED BY AWS CERTIFIED WELDERS AND IN ACCORDANCE WITH THE LATEST EDITION OF THE AWS WELDING CODE D1.1. ALL ELECTRODES TO BE LOW HYDROGEN, MATCHING FILLER METAL, PER AWS D1.1, UNO. (E70XX UNLESS NOTED OTHERWISE).
2. PRIOR TO FIELD WELDING GALVANIZED MATERIAL, CONTRACTOR SHALL GRIND OFF GALVANIZING APPROX. 0.5" BEYOND THE PROPOSED FIELD WELD SURFACES.
3. ALL WELDS SHALL BE INSPECTED VISUALLY. A MINIMUM OF 25% OF WELDS SHALL BE INSPECTED WITH DYE PENETRANT OR MAGNETIC PARTICLE TO MEET THE ACCEPTANCE CRITERIA OF AWS D1.1. 100% OF WELDS SHALL BE INSPECTED IF DEFECTS ARE FOUND.
4. WELD INSPECTIONS SHALL BE PERFORMED BY AN AWS CERTIFIED WELD INSPECTOR.
5. AFTER INSPECTION, ALL FIELD WELDED SURFACES SHALL BE REPAIRED WITH A MINIMUM OF TWO COATS OF ZRC GALVALITE COLD GALVANIZING COMPOUND PER ASTM A780 AND MANUFACTURER'S RECOMMENDATIONS.

BOLTED ASSEMBLIES AND TIGHTENING OF CONNECTIONS

1. ALL HIGH STRENGTH BOLTS SHALL CONFORM TO THE PROVISIONS OF THE SPECIFICATIONS FOR STRUCTURAL JOINTS USING A325 OR A490 BOLTS AS APPROVED BY THE RCSC.
2. FLANGE BOLTS SHALL BE TIGHTENED BY THE AISC "TURN-OF-THE-NUT" METHOD. THE FOLLOWING TABLE SHOULD BE USED FOR THE "TURN-OF-THE-NUT" TIGHTENING.
3. SPLICE BOLTS AND ALL OTHER BOLTS IN BEARING TYPE CONNECTIONS SHALL BE TIGHTENED TO A SNUG-TIGHT CONDITION.
4. THE SNUG-TIGHT CONDITION IS DEFINED AS THE TIGHTNESS ATTAINED BY EITHER A FEW IMPACTS OF AN IMPACT WRENCH OR THE FULL EFFORT OF AN IRONWORKER WITH AN ORDINARY SPUD WRENCH TO BRING THE CONNECTED PLIES INTO FIRM CONTACT.
5. HB HOLLO-BOLT SHALL BE INSTALLED PER ICC ESR-3330 INSTRUCTIONS.

VERIFICATION AND INSPECTION

1. IF APPLICABLE, VERIFICATION INSPECTION TO BE PERFORMED SHALL BE IN ACCORDANCE TO IBC-2015 SECTION 1705 - FOR STEEL CONSTRUCTION & TABLE 1705.3 FOR CONCRETE CONSTRUCTION.

POST INSTALLED EPOXY INJECTED ANCHOR BOLTS:

1. CONCRETE MUST BE A MINIMUM OF 28 DAYS OLD.
2. FOLLOW MANUFACTURER'S REQUIREMENTS FOR CURE TIME VS. AMBIENT TEMPERATURE.
3. DRILL HOLE TO REQUIRED DIAMETER AND DEPTH. ALL WATER, DIRT, OIL, DEBRIS, GREASE OR DUST MUST BE REMOVED FROM EACH CORE HOLE. FOLLOW MANUFACTURER'S RECOMMENDATION FOR CORRECT TYPE OF CORE BIT. AVOID DAMAGING EXISTING REINFORCING STEEL OR OTHER EMBEDDED ITEMS. NOTIFY TES ENGINEERING IF VOIDS IN THE CONCRETE, REINFORCING STEEL OR OTHER EMBEDDED ITEMS ARE ENCOUNTERED. STOP CORING IMMEDIATELY IF THIS OCCURS.
4. A HOLE ROUGHENING DEVICE FROM EITHER HILTI OR ALLFASTENERS SHALL BE USED WITH ALL HOLES. FOLLOW ALL MANUFACTURER'S RECOMMENDED CORING AND INSTALLATION INSTRUCTIONS.
5. AFTER CORING AND ROUGHENING, FLUSH EACH HOLE WITH RUNNING WATER TO REMOVE ANY SLURRY OR DEBRIS. REMOVE ALL WATER FROM THE HOLE BY MECHANICAL PUMPING.
6. BRUSH EACH HOLE WITH AN APPROPRIATE SIZED NYLON BRUSH AND FLUSH WITH RUNNING WATER A SECOND TIME. REMOVE ALL WATER FROM THE HOLE.
7. AFTER THE SECOND WATER FLUSH BRUSH THE HOLE AGAIN WITH THE APPROPRIATE SIZED NYLON BRUSH.
8. BLOW EACH HOLE WITH COMPRESSED AIR TWO TIMES MINIMUM.
9. CONFIRM THAT EACH HOLE IS PROPERLY ROUGHED AND DRY.
10. NO EPOXY INJECTION SHALL TAKE PLACE IN RAINY CONDITIONS.
11. EPOXY SHOULD BE VISIBLE AT THE TOP OF THE CORE HOLE AFTER INSTALLATION.
12. CONTRACTOR TO SUPPLY ONE PHOTO OF EACH ROUGHED AND CLEANED HOLE IN CLOSEOUT PHOTO PACKAGE.

TABLE 8.2 NUT ROTATION FROM SNUG-TIGHT CONDITION FOR TURN-OF-NUT PRETENSIONING^{a,b}

BOLT LENGTH ^f	DISPOSITION OF OUTER FACE OF BOLTED PARTS		
	BOTH FACES NORMAL TO BOLT AXIS	ONE FACE NORMAL TO BOLT AXIS, OTHER SLOPED NOT MORE THAN 1:20 ^d	BOTH FACES SLOPED NOT MORE THAN 1:20 FROM NORMAL TO BOLT AXIS ^d
NOT MORE THAN 4d _b	1/3 TURN	1/2 TURN	2/3 TURN
MORE THAN 4d _b BUT NOT MORE THAN 8d _b	1/2 TURN	2/3 TURN	5/6 TURN
MORE THAN 8d _b BUT NOT MORE THAN 12d _b	2/3 TURN	5/6 TURN	1 TURN

^a NUT ROTATION IS RELATIVE TO BOLT REGARDLESS OF THE ELEMENT (NUT OR BOLT) BEING TURNED. FOR REQUIRED NUT ROTATIONS OF 1/2 TURN AND LESS, THE TOLERANCE IS PLUS OR MINUS 30 DEGREES; FOR REQUIRED NUT ROTATIONS OF 2/3 TURN AND MORE, THE TOLERANCE IS PLUS OR MINUS 45 DEGREES.

^b APPLICABLE ONLY TO JOINTS IN WHICH ALL MATERIAL WITHIN THE GRIP IS STEEL.

^c WHEN THE BOLT LENGTH EXCEEDS 12d_b, THE REQUIRED NUT ROTATION SHALL BE DETERMINED BY ACTUAL TESTING IN A SUITABLE TENSION CALIBRATOR THAT SIMULATES THE CONDITIONS OF SOLIDLY FITTING STEEL.

^d BEVELED WASHER NOT USED.

SPECIFICATION FOR STRUCTURAL JOINTS USING ASTM A325 OR A490 BOLTS, JUNE 30, 2004 RESEARCH COUNCIL ON STRUCTURAL CONNECTIONS

INSTALLATION TORQUE REQUIRED FOR HOLLO BOLTS AND AJAX BOLTS:

1. HB12 HOLLO BOLT: 59 FT-LBS
2. HB16 HOLLO BOLT: 140 FT-LBS
3. HB20 HOLLO BOLT: 221 FT-LBS
4. M20 AJAX BOLT: 280 FT-LBS.

FIELD HOT WORK PLAN NOTES:

FOLLOWING GUIDELINES SHALL BE COMPLIED WITH:

1. CONTRACTOR'S RESPONSIBILITY TO COMPLETE A HOT WORK PLAN IF AWARDED PER CUSTOMER SPECIFICATIONS GUIDELINES FOR WELDING, CUTTING & SPARK PRODUCING WORK.
2. HAVE A FIRE PLAN APPROVED BY THE CUSTOMER AND THEIR SAFETY MANAGEMENT DEPT.
3. CONTRACTOR MUST OBTAIN THE CONTACT INFO OF THE LOCAL FIRE DEPARTMENT AND THE 911 ADDRESS OF THE TOWER SITE BEFORE CONSTRUCTION.
4. CONTRACTOR SHALL MAKE SURE THAT CELL PHONE COVERAGE IS AVAILABLE IN THE TOWER SITE. IF CELL COVERAGE IS NOT AVAILABLE, AN IMMEDIATE AVAILABLE MEANS OF DIRECT COMMUNICATION WITH THE FIRE DEPARTMENT SHALL BE DETERMINED PRIOR TO CONSTRUCTION START.
5. ALL CONSTRUCTION SHALL BE PERFORMED UNDER WIND SPEED LESS THAN 10 MPH ON THE GROUND LEVEL. IF WIND SPEED INCREASE, CONTRACTOR MUST DETERMINE IF CONSTRUCTION SHALL BE DISCONTINUED.
6. FIRE SUPPRESSION EQUIPMENT MUST BE MADE AVAILABLE ON SITE AND READY TO USE.
7. CONTRACTOR SHALL ASSIGN A FIRE WATCHER TO PERFORM FIRE-FIGHTING DUTIES.
8. ALL WELDERS SHALL BE AWS OR STATE CERTIFIED. THEY MUST ALSO BE EXPERIENCED IN WELDING ON GALVANIZED MATERIALS.
9. IF IT IS POSSIBLE, ALL EXISTING COAX NEAR WELDING AREA SHALL BE TEMPORARILY MOVED AWAY FROM THE WELDING AREA BEFORE WELDING THE PLATES.
10. PLEASE REPORT ANY FIELD ISSUE TO TES @ 972-483-0607.



Tower Engineering Solutions

1320 GREENWAY DRIVE, SUITE 600
IRVING, TX 75038
PHONE: (972) 483-0607



5900 BROKEN SOUND PARKWAY, NW
BOCA RATON, FL 33487
(800)-487-SITE

TES JOB NO:
70654

CUSTOMER SITE NO:
CT01725-A-SBA
CUSTOMER SITE NAME:
BLOOMFIELD
1021 BLUE HILLS AVENUE
BLOOMFIELD, CT 06002

DRAWN BY: CAH | CHECKED BY: FA/AD

REV.	DESCRIPTION	BY	DATE
1	FIRST ISSUE	CAH	06/06/19

SHEET TITLE:

GENERAL NOTES

This drawing/document is the property of Tower Engineering Solutions, LLC. Information contained herein is considered confidential in nature and is to be used only for the specific site that it was intended for. Reproduction, transmission, publication or disclosure by any method is prohibited except by express written permission from Tower Engineering Solutions, LLC. Without exception, the information on this drawing/document remains the property of Tower Engineering Solutions, LLC.

SHEET NUMBER: | REV #:

GN-1 | 0

NOTES:

1. TEMPORARILY RELOCATE ANY EXISTING COAX ATTACHED TO THE TOWER AND ANY OTHER MEMBERS WHERE OBSTRUCTION WITH THE PROPOSED MODIFICATION MAY OCCUR.
2. TEMPORARY RELOCATION OF EXISTING EQUIPMENT AROUND THE FOUNDATION MAY BE REQUIRED DURING CONSTRUCTION.

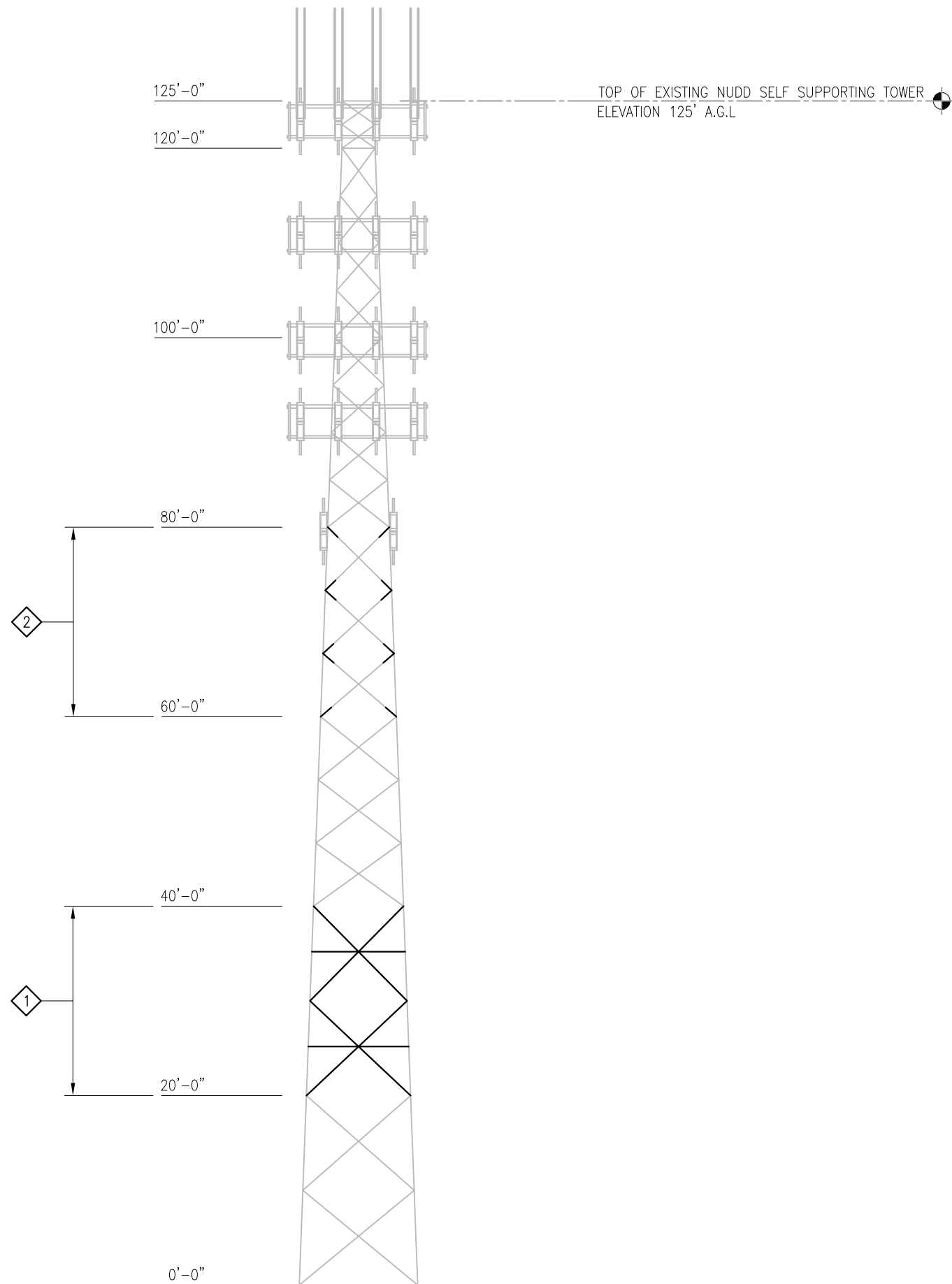
SCOPE OF WORK

- 1 A. REPLACE EXISTING L 3" X 3" X 3/16" DIAGONALS WITH NEW L 3" X 3" X 1/4" A36 DIAGONALS FROM 20' TO 40' ELEV. SEE SHEET A-2 FOR DETAILS.
 B. INSTALL NEW L 3" X 3" X 1/4" A36 MID-PANEL HORIZONTALS FROM 20' TO 40' ELEV. SEE SHEET A-3 FOR DETAILS.
- 2 INSTALL NEW PL 3/8" X 2 1/2" X 1'-0" A36 DIAGONAL END CLIPS FROM 60' TO 80' ELEV. SEE SHEET A-4 FOR DETAILS.
- 3 THE CONTRACTOR SHALL BE RESPONSIBLE FOR THE CLEAN-UP, REMOVAL AND DISPOSAL OF EXCESS MATERIALS USED AND REMOVED FROM THE STRUCTURE AT THE COMPLETION OF THE PROJECT.



FOUNDATION COATING NOTES:

1. THE COATING MATERIALS SHALL BE LANCO WHITE ACRYLIC ELASTOMERIC COATING AND SEALER, OR HYDRO ARMOR COATING.
2. THE COATING CAN BE PLACED AT LEAST (2) DAYS AFTER THE PLACEMENT OF THE CONCRETE FOR FOUNDATION REINFORCEMENT, AND MINIMUM (4) DAYS FOR NEW FOUNDATION CONSTRUCTION.
3. THE CONCRETE SURFACE SHALL BE CLEAN AND DRY PRIOR TO THE APPLICATION OF THE COATING.
4. THE COATING SHALL BE APPLIED TO ALL THE SURFACES OF THE CONCRETE ABOVE THE GROUND AND 6" BELOW THE GRADE SURFACE IF APPLICABLE.
5. MINIMUM 30 MILS COATING IS REQUIRED.



Tower Engineering Solutions

1320 GREENWAY DRIVE, SUITE 600
 IRVING, TX 75038
 PHONE: (972) 483-0607



5900 BROKEN SOUND PARKWAY, NW
 BOCA RATON, FL 33487
 (800)-487-SITE

TES JOB NO:
 70654

CUSTOMER SITE NO:
 CT01725-A-SBA

CUSTOMER SITE NAME:
 BLOOMFIELD

1021 BLUE HILLS AVENUE
 BLOOMFIELD, CT 06002

DRAWN BY: CAH | CHECKED BY: FA/AD

REV.	DESCRIPTION	BY	DATE
1	FIRST ISSUE	CAH	06/06/19

SHEET TITLE:

TOWER PROFILE

This drawing/document is the property of Tower Engineering Solutions, LLC. Information contained herein is considered confidential in nature and is to be used only for the specific site that it was intended for. Reproduction, transmission, publication or disclosure by any method is prohibited except by express written permission from Tower Engineering Solutions, LLC. Without exception, the information on this drawing/document remains the property of Tower Engineering Solutions, LLC.

SHEET NUMBER: | REV #:

A-1

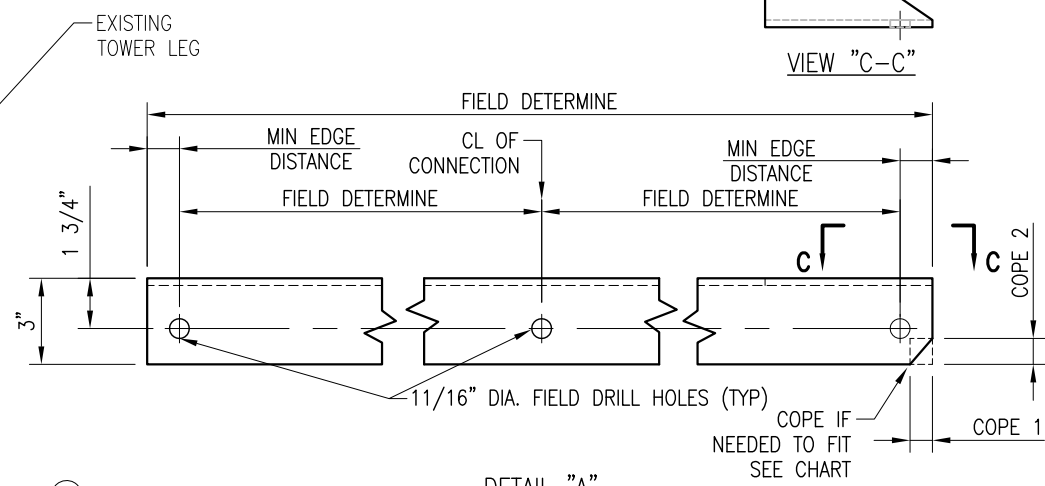
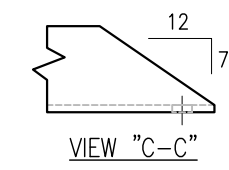
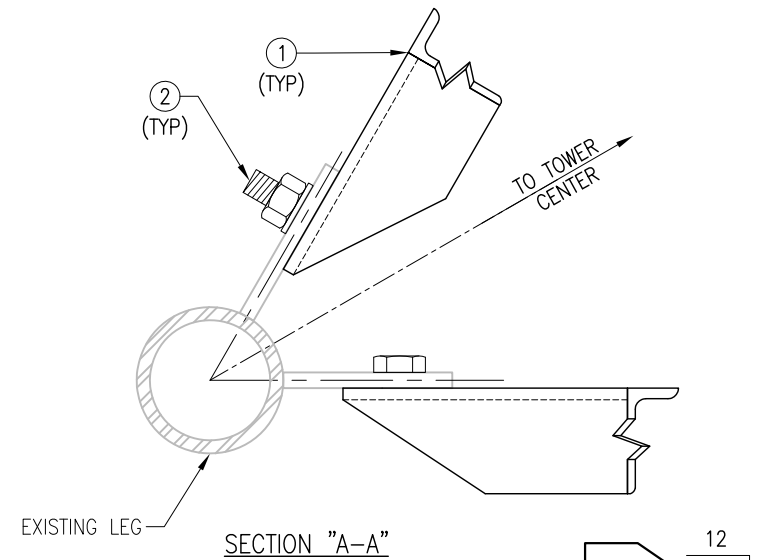
0

NOTES:

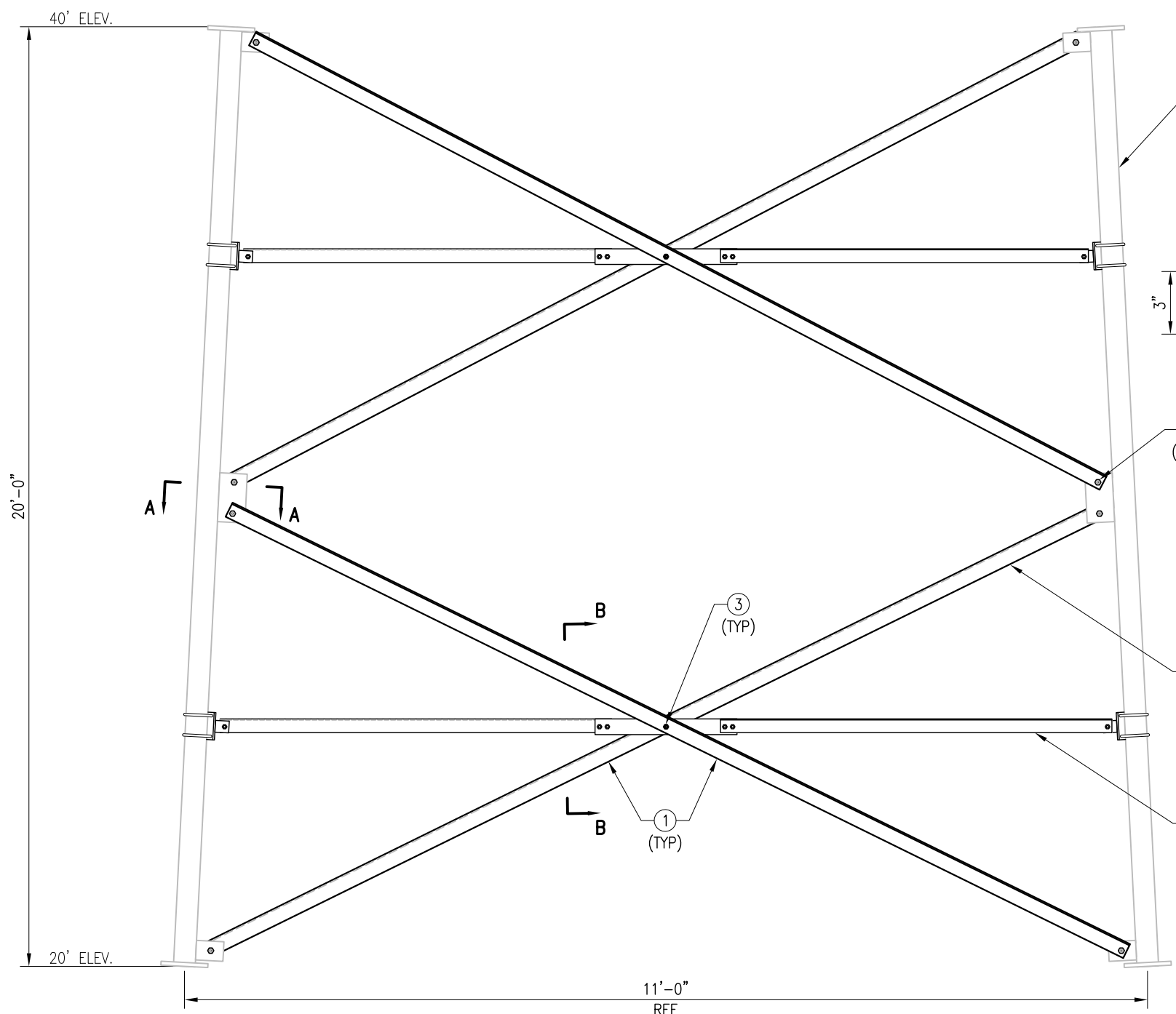
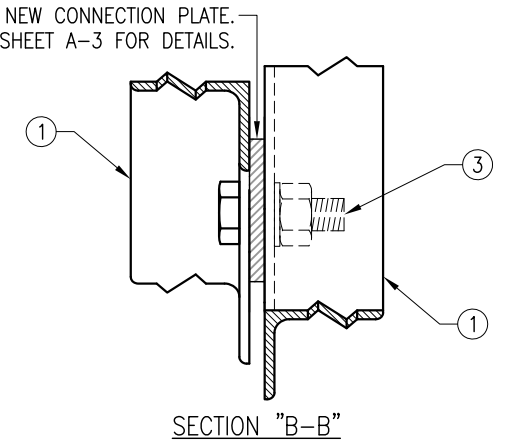
1. SEE SHEET A-1 FOR LOCATION OF REQUIRED SECTION MODIFICATIONS.
2. TEMPORARY RELOCATION OF ANY EXISTING COAX ATTACHED TO THE LEGS AND/OR ANY OTHER MEMBERS WHERE OBSTRUCTION WITH THE PROPOSED MODIFICATION MAY OCCUR.
3. WHEN FIELD CUTTING AND DRILLING ANGLES, USE SAME GAGE LINES AND EDGE DISTANCES AS INDICATED ON SHOP CUT AND DRILLED ENDS,
4. APPLY (2) COATS OF ZINC RICH GALVANIZING COMPOUND AS PER THE MANUFACTURER'S SPECIFICATIONS TO ALL FIELD CUT AND DRILLED AREAS.
5. REPLACE DIAGONAL BOLTS ONE AT A TIME.

SAFETY NOTES:

REMOVAL OF EXISTING DIAGONALS MUST BE DONE CAREFULLY WITH SAFETY IN MIND. DIAGONAL MEMBERS CAN ONLY BE REMOVED ONE AT A TIME AND IMMEDIATELY REPLACED WITH THE NEW MEMBER. NO MORE THAN ONE MEMBER SHOULD BE REMOVED AT ANY TIME. IF REQUIRED, TEMPORARY BRACING SHOULD BE INSTALLED FOR SAFETY. REPLACEMENT OF THE DIAGONALS SHALL BE PERFORMED AT A TIME WHEN THE WIND VELOCITY IS LESS THAN 10 MPH AT GROUND LEVEL AND WITH NO ICE ON THE STRUCTURE.



BOLT DIA	MIN EDGE DISTANCE	COPE LENGTH 1	COPE LENGTH 2
1/2"	7/8"	5/8"	1"
5/8"	1 1/8"	13/16"	15/16"
3/4"	1 3/8"	1"	7/8"
7/8"	1 1/2"	1 1/16"	13/16"
1"	1 3/4"	1 1/4"	3/4"



NOTE: TOWER SHOWN IS ONLY REPRESENTATIVE.

ELEVATION VIEW (20' TO 40' ELEV.)

ITEM NO.	QTY.	PART NO.	DESCRIPTIONS
1	12	D-1	L 3" X 3" X 1/4" X 17'-0" A36
2	24	---	BOLT 5/8" X 2" A325
3	6	---	BOLT 5/8" X 2 1/4" A36

Copyright 2019 Tower Engineering Solutions, LLC



Tower Engineering Solutions
 1320 GREENWAY DRIVE, SUITE 600
 IRVING, TX 75038
 PHONE: (972) 483-0607



5900 BROKEN SOUND PARKWAY, NW
 BOCA RATON, FL 33487
 (800)-487-SITE

TES JOB NO:
 70654

CUSTOMER SITE NO:
 CT01725-A-SBA
 CUSTOMER SITE NAME:
 BLOOMFIELD

1021 BLUE HILLS AVENUE
 BLOOMFIELD, CT 06002

DRAWN BY: CAH CHECKED BY: FA/AD

REV.	DESCRIPTION	BY	DATE
1	FIRST ISSUE	CAH	06/06/19

SHEET TITLE:

DIAGONAL REPLACEMENT DETAILS

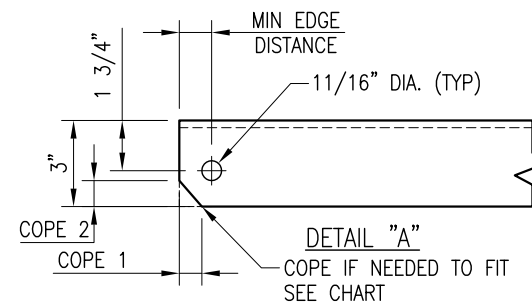
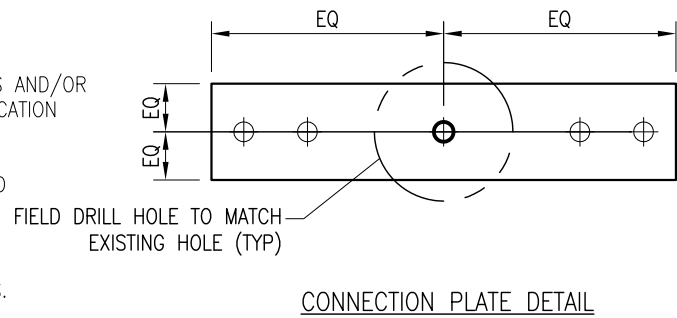
This drawing/document is the property of Tower Engineering Solutions, LLC. Information contained herein is considered confidential in nature and is to be used only for the specific site that it was intended for. Reproduction, transmission, publication or disclosure by any method is prohibited except by express written permission from Tower Engineering Solutions, LLC. Without exception, the information on this drawing/document remains the property of Tower Engineering Solutions, LLC.

SHEET NUMBER: REV #:

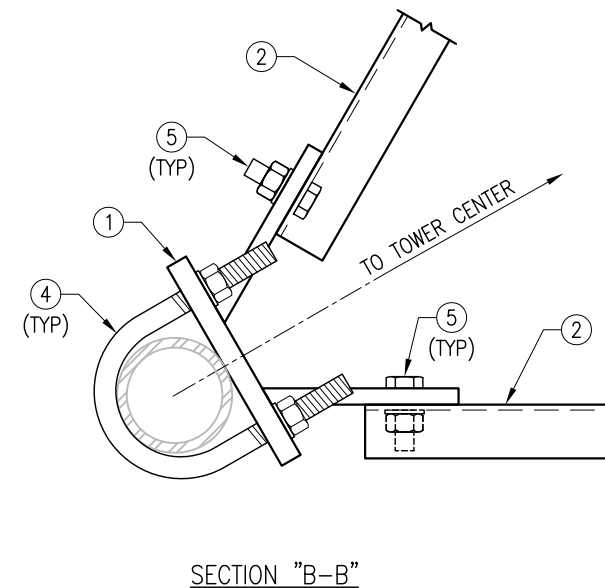
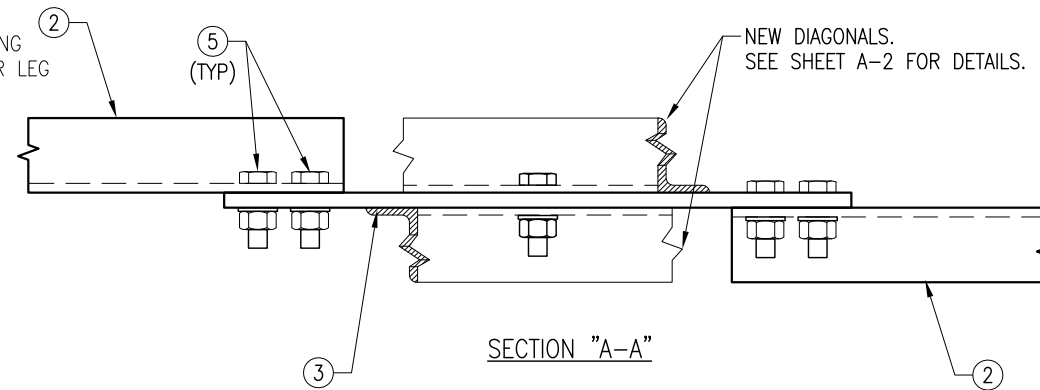
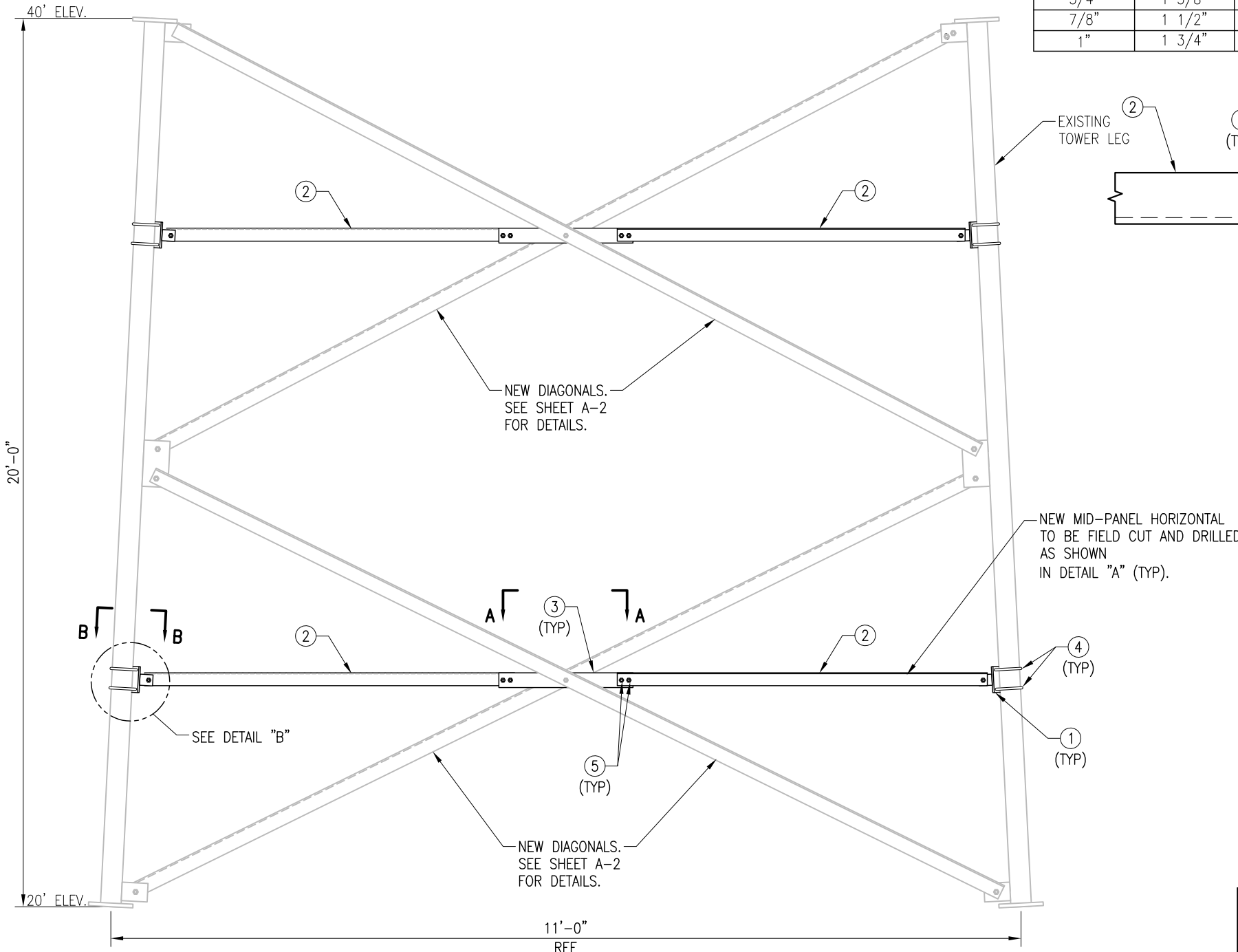
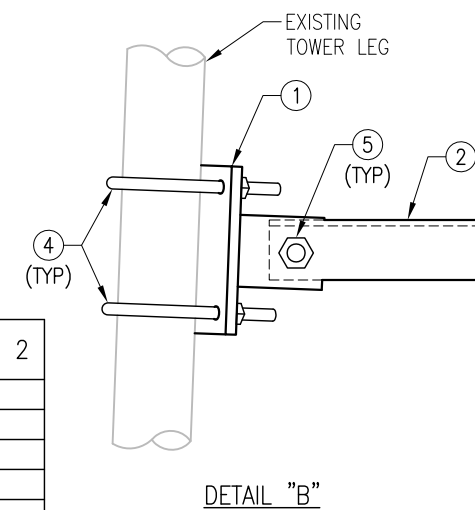
A-2 0

NOTES:

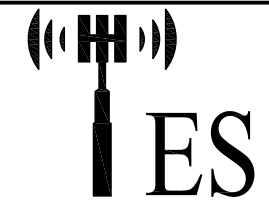
1. SEE SHEET A-1 FOR LOCATION OF REQUIRED SECTION MODIFICATIONS.
2. TEMPORARY RELOCATION OF ANY EXISTING COAX ATTACHED TO THE LEGS AND/OR ANY OTHER MEMBERS WHERE OBSTRUCTION WITH THE PROPOSED MODIFICATION MAY OCCUR.
3. WHEN FIELD CUTTING AND DRILLING ANGLES, USE SAME GAGE LINES AND EDGE DISTANCES AS INDICATED ON SHOP CUT AND DRILLED ENDS,
4. APPLY (2) COATS OF ZINC RICH GALVANIZING COMPOUND AS PER THE MANUFACTURER'S SPECIFICATIONS TO ALL FIELD CUT AND DRILLED AREAS.



BOLT DIA	MIN EDGE DISTANCE	COPE LENGTH 1	COPE LENGTH 2
1/2"	7/8"	5/8"	1"
5/8"	1 1/8"	13/16"	15/16"
3/4"	1 3/8"	1"	7/8"
7/8"	1 1/2"	1 1/16"	13/16"
1"	1 3/4"	1 1/4"	3/4"



ITEM NO.	QTY.	PART NO.	DESCRIPTIONS
1	6	HBR6625W	PL 3/4" X 7" X 9 1/8" A36 WELDMENT BRACKET
2	12	MH-11G	3" X 3" X 1/4" X 5'-6" A36
3	6	MH-15-300CP1	PL 3/8" X 3" X 1'-9 1/4" A36
4	12	MS02-625-6750-900	RU-BOLT 5/8" X 6 3/4" I.W. X 9" I.L. A36 OR EQUIV
5	36	---	BOLT 5/8" X 2" A325



Tower Engineering Solutions
1320 GREENWAY DRIVE, SUITE 600
IRVING, TX 75038
PHONE: (972) 483-0607



5900 BROKEN SOUND PARKWAY, NW
BOCA RATON, FL 33487
(800)-487-SITE

TES JOB NO:
70654
CUSTOMER SITE NO:
CT01725-A-SBA
CUSTOMER SITE NAME:
BLOOMFIELD
1021 BLUE HILLS AVENUE
BLOOMFIELD, CT 06002

DRAWN BY: CAH CHECKED BY: FA/AD

REV.	DESCRIPTION	BY	DATE
1	FIRST ISSUE	CAH	06/06/19

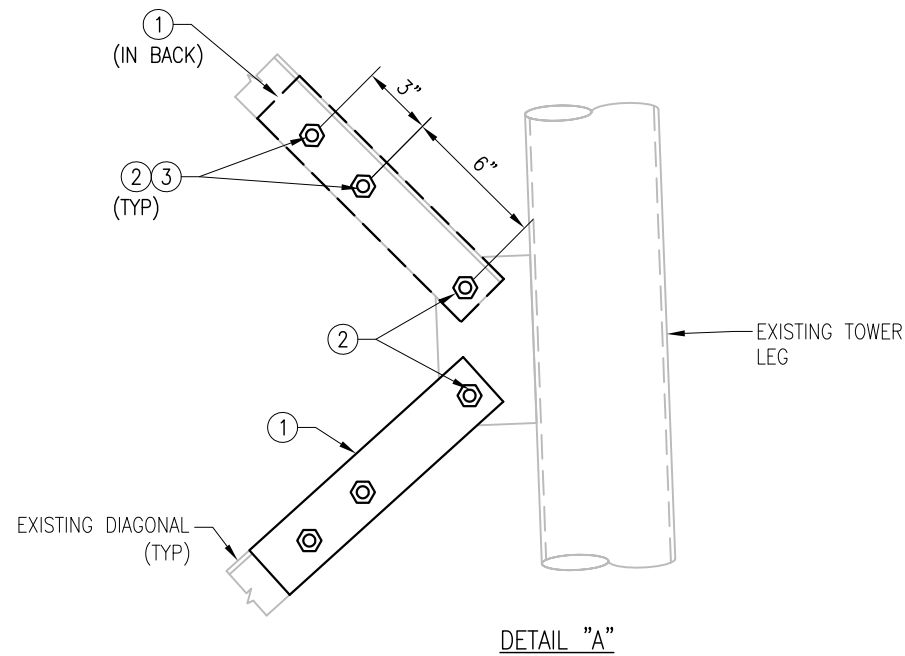
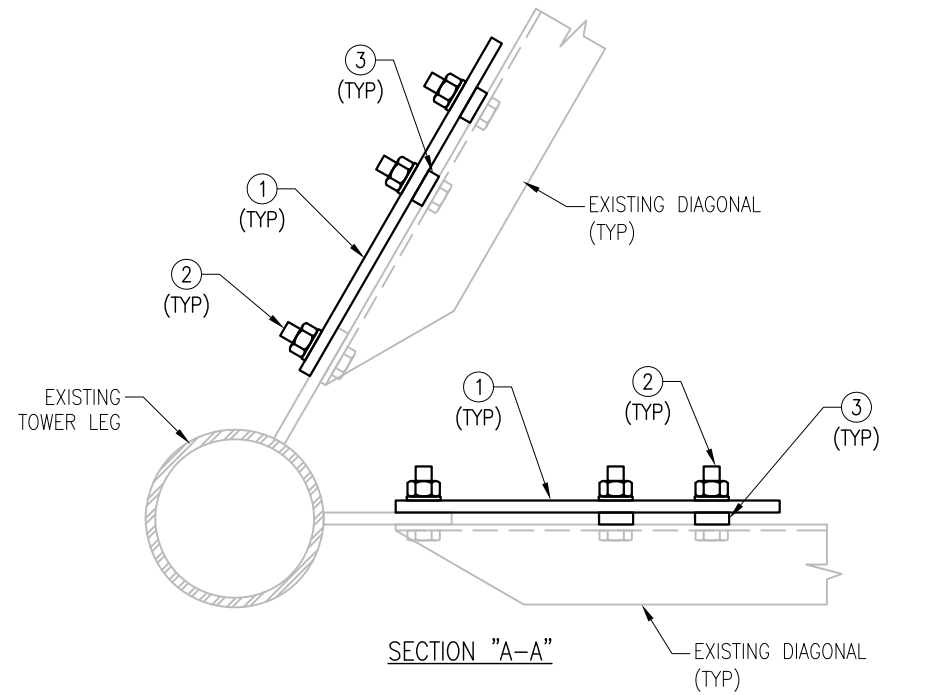
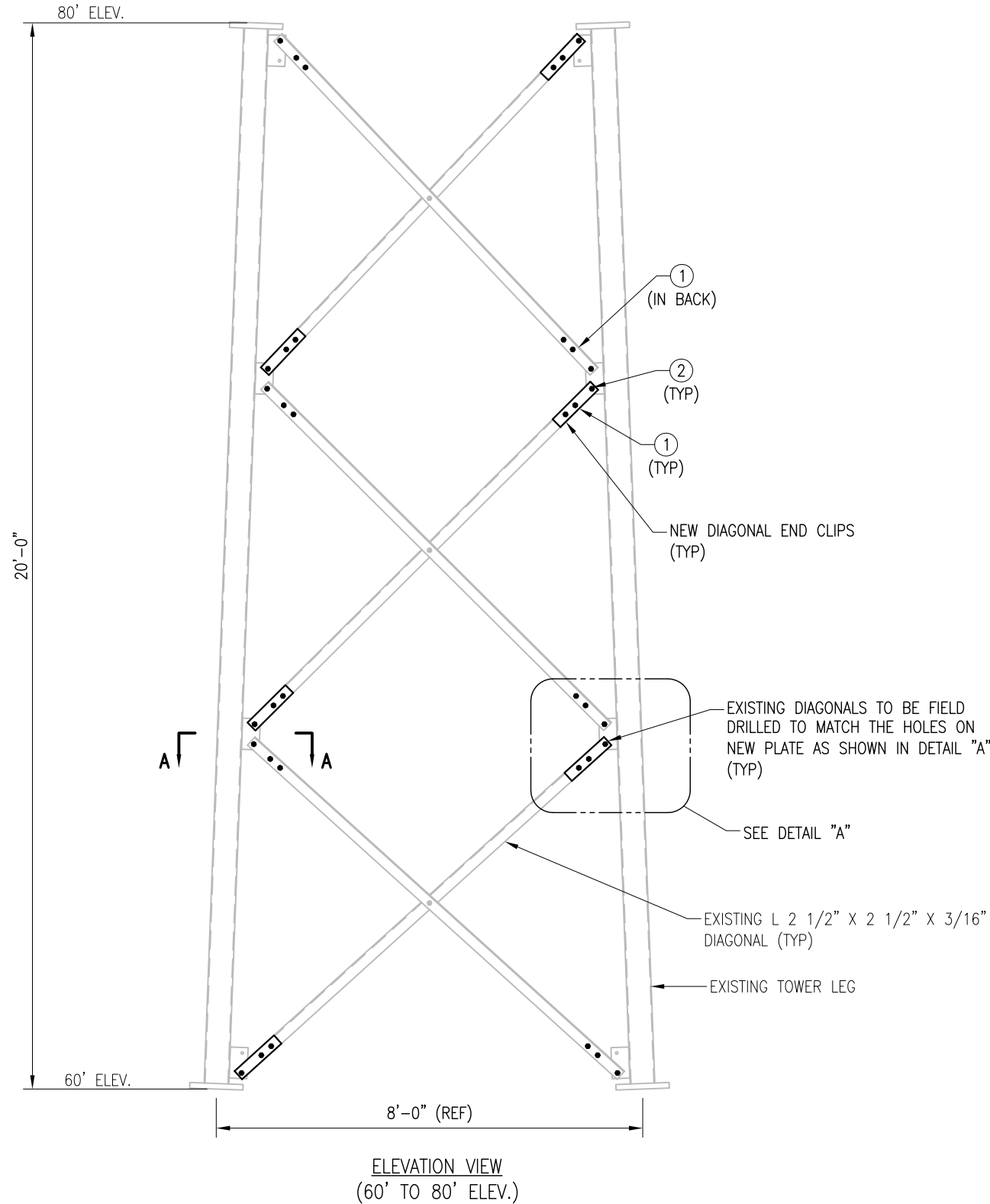
SHEET TITLE:
MID-PANEL HORIZONTAL
ASSEMBLY- 2 BAYS
(6.625" O.D. PIPE LEG)

This drawing/document is the property of Tower Engineering Solutions, LLC. Information contained herein is considered confidential in nature and is to be used only for the specific site that it was intended for. Reproduction, transmission, publication or disclosure by any method is prohibited except by express written permission from Tower Engineering Solutions, LLC. Without exception, the information on this drawing/document remains the property of Tower Engineering Solutions, LLC.

SHEET NUMBER:
A-3
REV #:
0

NOTES:

1. SEE SHEET A-1 FOR LOCATION OF REQUIRED SECTION MODIFICATIONS.
2. TEMPORARY RELOCATION OF ANY EXISTING COAX ATTACHED TO THE LEGS AND/OR ANY OTHER MEMBERS WHERE OBSTRUCTION WITH THE PROPOSED MODIFICATION MAY OCCUR.
3. WHEN FIELD CUTTING AND DRILLING ANGLES, USE SAME GAGE LINES AND EDGE DISTANCES AS INDICATED ON SHOP CUT AND DRILLED ENDS,
4. APPLY (2) COATS OF ZINC RICH GALVANIZING COMPOUND AS PER THE MANUFACTURER'S SPECIFICATIONS TO ALL FIELD CUT AND DRILLED AREAS.



ITEM NO.	QTY.	PART NO.	DESCRIPTIONS
1	36	ECP-1	PL 3/8" X 2 1/2" X 1'-0" A36
2	108	---	BOLT 1/2" X 2" A325
3	72	---	SPACER/SHIM FOR 1/2" BOLT (3/8" THICK)



Tower Engineering Solutions
 1320 GREENWAY DRIVE, SUITE 600
 IRVING, TX 75038
 PHONE: (972) 483-0607



5900 BROKEN SOUND PARKWAY, NW
 BOCA RATON, FL 33487
 (800)-487-SITE

TES JOB NO:
 70654

CUSTOMER SITE NO:
 CT01725-A-SBA
 CUSTOMER SITE NAME:
 BLOOMFIELD
 1021 BLUE HILLS AVENUE
 BLOOMFIELD, CT 06002

DRAWN BY: CAH | CHECKED BY: FA/AD

REV.	DESCRIPTION	BY	DATE
1	FIRST ISSUE	CAH	06/06/19

SHEET TITLE:

DIAGONAL END CLIP REINFORCEMENT

This drawing/document is the property of Tower Engineering Solutions, LLC. Information contained herein is considered confidential in nature and is to be used only for the specific site that it was intended for. Reproduction, transmission, publication or disclosure by any method is prohibited except by express written permission from Tower Engineering Solutions, LLC. Without exception, the information on this drawing/document remains the property of Tower Engineering Solutions, LLC.

SHEET NUMBER: | REV #:

A-4 | 0